

**Trustees' Annual Report and Statement of Accounts**

**C W Young Charitable Trust**

**For period ended 31 May 2024**

Governance Arrangements .....	3
Background .....	3
Governance Structures and Documents .....	3
Information and Administration .....	4
Trustees .....	4
Objective and Activities .....	4
Pharmacy Conference .....	5
Impact of Covid-19 pandemic .....	5
Financial Position of C W Young .....	5
Merging with C W Young Fund .....	5
Summary of Financial Position .....	6
Trustees Signatures of Approval .....	6
Independent Examiner’s Report .....	7
Financial Statements.....	9

## Governance Arrangements

Pharmacy Forum NI (the Forum) is the professional leadership body for all pharmacists registered to practice in Northern Ireland. The elected Board Members of the Forum are also the Trustees of the C W Young Charitable Award. The remit in which the Forum and Trustees operate is set out in a legal scheme of delegation between the Pharmaceutical Society NI and the Forum.

## Background

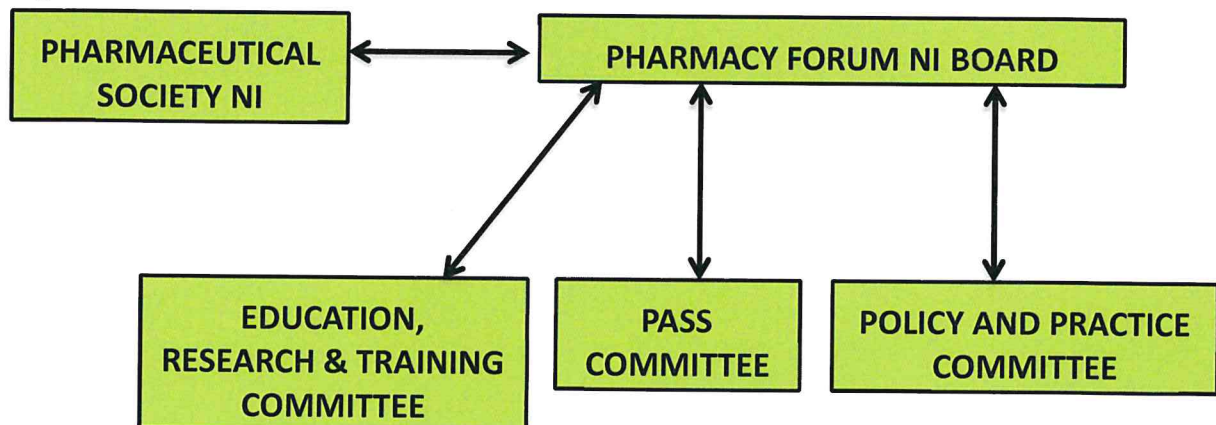
The Pharmaceutical Society NI is legislated through the 1976 Pharmacy Order (NI) and subsequent amendments in 2012 to regulate and to provide leadership for the pharmacy profession in Northern Ireland.

Pharmacy Forum NI was set up in 2011 to provide the professional leadership function enabling the Pharmaceutical Society to have a regulatory and leadership remit and yet achieve the separation of function consequent to the Government's wish to decouple professional leadership and regulation.

A legal scheme of delegation exists between the Pharmaceutical Society NI and the Pharmacy Forum NI. It outlines the remit, delegate powers and responsibilities of the Pharmacy Forum NI specifically in relation to C W Young Charitable Trust under section *Delegated Functions to the Pharmacy Forum Management Board, Item 1, Delegated functions to the PFMB, 1 (b) To promote pharmaceutical education and application of pharmaceutical knowledge.*

## Governance Structures and Documents

### Organisational Chart



- The governing document for C W Young Charitable Trust, is the Declaration of Trust.

## Information and Administration

C W Young Charitable Trust  
Society House, 73 University Street,  
Belfast  
Northern Ireland  
BT7 1HL  
NIC: 102801

## Trustees

All Trustees are elected members of the Pharmacy Forum NI Board. Please see below the list of members and their Board positions for the period ended May 31 2024:

- **Sheelin McKeagney, Chair of the Board**
- **Anne McAlister, Vice Chair of the Board**
- **Philip Boyle, Elected Member**
- **Judith Gray, Elected Member**
- **Neill Elliott, Elected Member**
- **Glynis McMurtry, Elected Member.**

All Board Members are supported with general governance training provided by an experienced external training partner. Trustees are also provided with in house Trustee Training, at which they are provided the Trust Deeds for each of the charities for which they are Trustees. This rolling programme of training is aligned with the Pharmacy Forum NI Board Election process and term of board membership. A skills audit is conducted in the year following an election to enhance the training requirements of all Board Members and Trustees alike.

## Objective and Activities

The C W Young Charitable Trust exists as an educational trust to promote and advance, by charitable means only, research and education projects that will develop pharmacy in NI by supporting the education and acquisition of knowledge and furtherance of research in NI C W Young Charitable Trust meets the public benefit requirement in two ways, as listed below:

- The advancement of the study and research of pharmacy; and
- Improved health and wellbeing of the general public.

Every year the C W Young Charitable Trust meets this purpose by awarding research grants up to a total amount of £7,500 to applicants.

The Fund is in honour of Charles William Young, Head of Department of Pharmacy in Belfast College of Technology from 1929-1960.

### **Pharmacy Research**

During the reporting period there were two successful applications made for funding.

- Dr Ahmed Abuelhana, Mrs Hayley Coates and Ms Petra Clark were the recipients of £3,750 for their project entitled, 'Cardio-Care Initiative: Innovating Pharmacy Service to Identify and Prevent Cardiovascular Diseases among High-Risk Individuals in Northern Ireland'. This primary objective of this project was to evaluate how community pharmacists can identify individuals at cardiovascular risk and implement interventions, including lifestyle advice, medication optimization, or GP referrals, to reduce risk and improve public health outcomes;
- £3,750 was awarded Bronagh White to fund their project entitled 'Student Pharmacists action on the social determinants of health.' This project aims to provide student pharmacists with the opportunity to get involved in health education interventions in the community sector delivered by Healthy Living Centres (HLCs) which are community-led health and well-being organisations throughout NI and members of the Healthy Living Centre Alliance.

### **Financial Position of C W Young Charitable Trust**

A review of the charity's financial position at the end of the year was provided in the Pharmaceutical Society NI's Annual Report 2023-24. The Annual Report was laid before the Northern Ireland Assembly under Articles 4C and 4D of the Pharmacy (Northern Ireland) Order 1976 by the Department of Health in the last quarter of 2023. As of 31 May 2024, C W Young Charitable Trust bank account total was £18,180.

### **Closure of Ronnie McMullan Trust and Merging with C W Young Charitable Trust**

In June 2021, after a process of due diligence, Trustees of the Ronnie Mullan Fund decided to close the Ronnie McMullan Charitable Trust Fund going forward, due to the fact that Governance and regulatory compliance costs were disproportionate to the cost of delivering the charitable objectives of this small charity. Any remaining funds from the charity have since been transferred as a restricted fund into C W Young Charitable Trust (on 16<sup>th</sup> January 2024), which has similar charitable purposes; the money has been ringfenced in the bank account as a restricted fund within the C W Young Charitable Trust in memorial to Ronnie McMullan. The amount of money in the Ronnie McMullan Account on 16<sup>th</sup> January 2024 was £9,114.83; this was transferred to the newly opened joint CW Young & Ronnie McMullan bank account on the same day. The current Ronnie McMullan charity account was officially closed on 16<sup>th</sup> January 2024.

### **Summary of Financial Position**

Trustees are satisfied with the accounting total of the C W Young Charitable Trust.

**Trustees' Signatures of Approval**

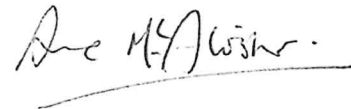
Signed and approved on behalf of the Board of Trustees for the C W Young Trust Fund Award on 28 March 2025.



Sheelin McKeagney

Chair of the Board of Trustees, Pharmacy Forum NI

Date: 28 March 2025



Anne McAllister

Vice-Chair of the Board of Trustees, Pharmacy Forum NI

Date: 28 March 2025

## **INDEPENDENT EXAMINER'S REPORT TO THE TRUSTEES OF C W YOUNG CHARITABLE TRUST**

### **Independent examiner's statement**

I report on the financial statements for the year ended 31 May 2024, which comprise the statement of financial activities (including income and expenditure account), statement of assets and the related notes.

### **Respective responsibilities of trustees and examiner**

The charity's trustees (who are also the directors of the company for the purposes of company law) are responsible for the preparation of the accounts in accordance with the requirements of the Companies Act 2006. Having satisfied myself that the charity is not subject to audit under company law, and is eligible for independent examination, it is my responsibility to:

- examine the accounts under section 65 of the Charities Act;
- to follow the procedures laid down in the general Directions given by the Charity Commission for Northern Ireland under section 65(9)(b) of the Charities Act; and
- to state whether particular matters have come to my attention.

### **Basis of independent examiner's report**

I have examined your charity accounts as required under section 65 of the Charities Act and my examination was carried out in accordance with the general Directions given by the Charity Commission for Northern Ireland under section 65(9)(b) of the Charities Act. The examination included a review of the accounting records kept by the charity and a comparison of the accounts presented with those records. It also included consideration of any unusual items or disclosures in the accounts, and seeking explanations from the trustees concerning any such matters.

My role is to state whether any material matters have come to my attention giving me cause to believe:

1. That accounting records were not kept in accordance with section 386 of the Companies Act 2006.
2. That the accounts do not accord with those accounting records.
3. That the accounts do not comply with the accounting requirements of section 396 of the Companies Act 2006 and with the methods and principles of the Charities Statement of Recommended Practice applicable to charities preparing their accounts in accordance with the Financial Reporting Standard applicable in the UK and Republic of Ireland.

4. That there is further information needed for a proper understanding of the accounts to be reached.

**Independent examiner's statement**

I have completed my examination and have no concerns in respect of the matters (1) to (4) listed above and, in connection with following the Directions of the Charity Commission for Northern Ireland, I have found no matters that require drawing to your attention.



Finegan Gibson Ltd  
Chartered Accountants & Registered Auditors  
Causeway Tower  
9 James Street South  
Belfast, BT2 8D

DATE: 28 March 2025

CW Young	NIC 107833	
----------	------------	--

## Receipts and payments accounts

For the period from	01/06/2023	To	31/05/2024	
---------------------	------------	----	------------	--

### Section A Receipts and payments

	Unrestricted funds to the nearest £	Restricted funds to the nearest £	Endowment funds to the nearest £	Total funds to the nearest £	Last year to the nearest £
<b>A1 Receipts</b>					
Donations & legacies	-	-	-	-	-
Grants	-	-	-	-	-
Fundraising activities	-	-	-	-	-
Interest on deposit account	698	-	-	698	583
Dividend on investments	4,722	-	-	4,722	5,063
Members' subscriptions	-	-	-	-	-
Charitable trading receipts	-	-	-	-	-
Rents from land & buildings	-	-	-	-	-
Other charitable receipts	-	9,115	-	9,115	-
<b>A1 Sub total (Gross income for the Annual Return)</b>	<b>5,420</b>	<b>9,115</b>	<b>-</b>	<b>14,535</b>	<b>5,646</b>
<b>A2 Asset and investment sales (see tables 1 and 2 in section 7 of the guidance).</b>					
Proceeds from sale of fixed asset	96,414	-	-	96,414	3,973
Loan repayments received	-	-	-	-	-
<b>A2 Sub total</b>	<b>96,414</b>	<b>-</b>	<b>-</b>	<b>96,414</b>	<b>3,973</b>
<b>Total receipts</b>	<b>101,834</b>	<b>9,115</b>	<b>-</b>	<b>110,949</b>	<b>9,619</b>
<b>A3 Payments</b>					
Cost of fundraising events	-	-	-	-	-
Gross trading payments	-	-	-	-	-
Investment management costs	1,690	-	-	1,690	1,740
Direct charitable activity	5,000	-	-	5,000	2,500
Grants & donations paid	-	-	-	-	-
Governance costs	670	-	-	670	1,930
Other costs	104	-	-	104	182
	-	-	-	-	-
	-	-	-	-	-
<b>A3 Sub total</b>	<b>7,464</b>	<b>-</b>	<b>-</b>	<b>7,464</b>	<b>6,352</b>
<b>A4 Asset and investment purchases (see tables 1 and 2 in section 7 of the guidance)</b>					
Purchase of investments	91,867	-	-	91,867	3,384
Loans made	-	-	-	-	-
<b>A4 Sub total</b>	<b>91,867</b>	<b>-</b>	<b>-</b>	<b>91,867</b>	<b>3,384</b>
<b>Total payments</b>	<b>99,331</b>	<b>-</b>	<b>-</b>	<b>99,331</b>	<b>9,736</b>
<b>Net of receipts/(payments)</b>	<b>2,503</b>	<b>9,115</b>	<b>-</b>	<b>11,618</b>	<b>- 117</b>
<b>A5 Transfers between funds</b>	<b>-</b>	<b>-</b>	<b>-</b>	<b>-</b>	<b>-</b>
<b>A6 Cash funds last year end</b>	<b>8,975</b>	<b>-</b>	<b>-</b>	<b>8,975</b>	<b>9,092</b>
<b>Cash funds this year end</b>	<b>11,478</b>	<b>9,115</b>	<b>-</b>	<b>20,593</b>	<b>8,975</b>

**Section B State RMcM Charitable Trust**

**NIC 102801**

Categories	Details	Unrestricted funds to nearest £	Restricted funds to nearest £	Endowment funds to nearest £	Total funds to nearest £	Last year to nearest £
<b>B1 Cash funds</b>	Current account	9,065	9,115	-	18,180	4,989
	Deposit account	2,413	-	-	2,413	3,986
		-	-	-	-	-
	<b>Total cash funds</b>	<b>11,478</b>	<b>9,115</b>	<b>-</b>	<b>20,593</b>	<b>8,975</b>
	(agree balances with receipts and payments account(s))	OK	OK	OK	OK	OK


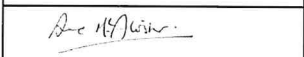
Categories	Details	Unrestricted funds to nearest £	Restricted funds to nearest £	Endowment funds to nearest £	Total funds to nearest £	Last year to nearest £
<b>B2 Other monetary assets</b>		-	-	-	-	-
		-	-	-	-	-
		-	-	-	-	-
		-	-	-	-	-
		-	-	-	-	-
				Total		

Categories	Details	Fund to which asset belongs Unrestricted	Cost (optional)	Current value (optional)	Last year
<b>B3 Investment assets</b>	Investments		-	202,173	190,089
			-	-	-
			-	-	-
			-	-	-
		Total		202,173	190,089

Categories	Details	Fund to which asset belongs	Cost (optional)	Current value (optional)	Last year
<b>B4 Assets retained for the charity's own use</b>			-	-	-
			-	-	-
			-	-	-
			-	-	-
			-	-	-
			-	-	-
			Total		

Categories	Details	Fund to which liability relates	When due (optional)	Amount due (optional)	Last year
<b>B5 Liabilities</b>				-	-
				-	-
				-	-
				-	-
			Total		

Signed by one or two trustees on behalf of all the trustees

Signature	Print Name	Date of approval
Sheelin McKeagney		28/03/2025
Anne McAllister		28/03/2025

**Additional analysis (1) RMcM Charitable Trust NIC 102801**

Analysis of receipts and payments

31/05/2024

1 Donations

	Unrestricted funds to nearest £	Restricted funds to nearest £	Expendable endowment funds to nearest £	Permanent endowment funds to nearest £	Total current period to nearest £	Total last period to nearest £
	-	-	-	-	-	-
	-	-	-	-	-	-
	-	-	-	-	-	-
<b>Total</b>	-	-	-	-	-	-
	OK	OK	OK		OK	OK

2 Grants

	Unrestricted funds to nearest £	Restricted funds to nearest £	Total current period to nearest £	Total last period to nearest £
	-	-	-	-
	-	-	-	-
	-	-	-	-
<b>Total</b>	-	-	-	-
	OK	OK	OK	OK

3 Gross receipts from other charitable activities

	Unrestricted funds to nearest £	Restricted funds to nearest £	Expendable endowment funds to nearest £	Permanent endowment funds to nearest £	Total current period to nearest £	Total last period to nearest £
	-	-	-	-	-	-
	-	-	-	-	-	-
	-	-	-	-	-	-
	-	-	-	-	-	-
	-	-	-	-	-	-
	-	-	-	-	-	-
	-	-	-	-	-	-
<b>Total</b>	-	-	-	-	-	-
	OK	Reference error	OK		Reference error	OK

*Make sure this section matches the information in Section A1 - Receipts*

4 Payments relating directly to charitable activities

	Unrestricted funds to nearest £	Restricted funds to nearest £	Expendable endowment funds to nearest £	Permanent endowment funds to nearest £	Total current period to nearest £	Total last period to nearest £
Ulster University	5,000	-	-	-	5,000	-
Queens University	-	-	-	-	-	2,500
	-	-	-	-	-	-
	-	-	-	-	-	-
	-	-	-	-	-	-
	-	-	-	-	-	-
	-	-	-	-	-	-
	-	-	-	-	-	-
<b>Total</b>	5,000	-	-	-	5,000	2,500
	OK	OK	OK		OK	OK

**Additional analysis (2) RMcM Charitable Trust NIC 102801**

**5 Breakdown of restricted funds**

	Restricted fund 1 - enter name of fund below	#	Restricted fund 2 - enter name of fund below	31/05/2024	Restricted fund 4 - enter name of fund below	Total restricted funds	Total restricted funds last period
	R McMullan		Youth Club Fund				
<b>Receipts</b>							
Transfer from Charity 102801 R McM Charitabel Trust	9,115		-	-	-	9,115	-
	-		-	-	-	-	-
	-		-	-	-	-	-
	-		-	-	-	-	-
	-		-	-	-	-	-
	-		-	-	-	-	-
	-		-	-	-	-	-
<b>Sub total</b>	<b>9,115</b>		<b>-</b>	<b>-</b>	<b>-</b>	<b>9,115</b>	<b>-</b>
						OK	
<b>Receipts from asset &amp; investment sales</b>							
Proceeds from sale of fixed assets	-		-	-	-	-	-
Proceeds from sale of investments	-		-	-	-	-	-
<b>Sub total</b>	<b>-</b>		<b>-</b>	<b>-</b>	<b>-</b>	<b>-</b>	<b>-</b>
						OK	
<b>Total receipts</b>	<b>9,115</b>		<b>-</b>	<b>-</b>	<b>-</b>	<b>9,115</b>	<b>-</b>
						OK	
<b>Payments</b>							
Expenses for fundraising activities	-		-	-	-	-	-
Gross trading payments	-		-	-	-	-	-
Investment management costs	-		-	-	-	-	-
Payments relating directly to charitable activities	-		-	-	-	-	-
Grants and donations	-		-	-	-	-	-
Governance costs:							
Audit / independent examination	-		-	-	-	-	-
Preparation of annual accounts	-		-	-	-	-	-
Legal costs	-		-	-	-	-	-
	-		-	-	-	-	-
<b>Sub total</b>	<b>-</b>		<b>-</b>	<b>-</b>	<b>-</b>	<b>-</b>	<b>-</b>
						OK	
<b>Payments relating to asset and investment movements</b>							
Purchases of fixed assets	-		-	-	-	-	-
Purchase of investments	-		-	-	-	-	-
<b>Sub total</b>	<b>-</b>		<b>-</b>	<b>-</b>	<b>-</b>	<b>-</b>	<b>-</b>
						OK	
<b>Total payments</b>	<b>-</b>		<b>-</b>	<b>-</b>	<b>-</b>	<b>-</b>	<b>-</b>
						OK	
<b>Net receipts / (payments)</b>	<b>9,115</b>		<b>-</b>	<b>-</b>	<b>-</b>	<b>9,115</b>	<b>-</b>
						OK	
<b>Transfers to / (from) funds</b>	<b>-</b>		<b>-</b>	<b>-</b>	<b>-</b>	<b>-</b>	<b>-</b>
						OK	
<b>Surplus / (deficit) for year</b>	<b>9,115</b>		<b>-</b>	<b>-</b>	<b>-</b>	<b>9,115</b>	<b>-</b>
						OK	

**Nature and purpose of funds**

Restricted funds are to be used to fund £250 towards the attendance of the Foundation Training Year Pharmacist student with the highest mark in the Common Registration Assessment at a Pharmacy Conference.