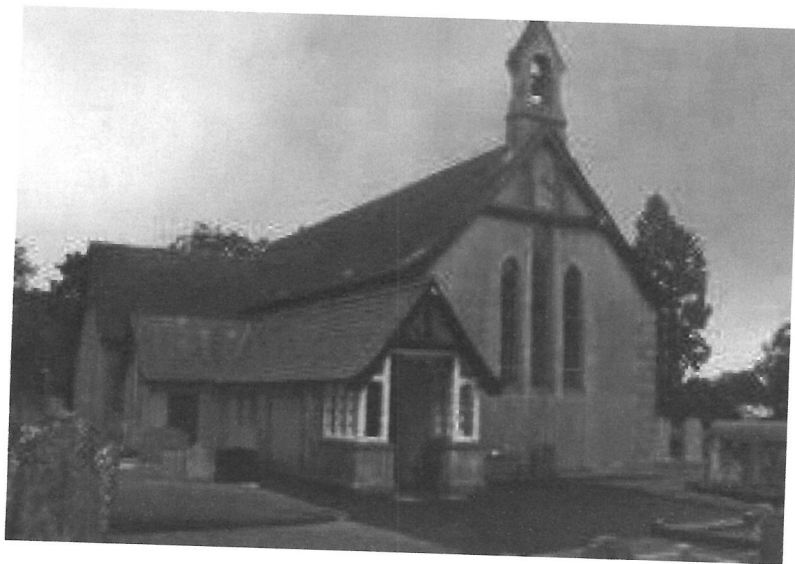


Christ Church Castledawson
Trustees' Annual Report and Statement of Receipts and Payments
and Assets and Liabilities

For the year ended 31 December 2024

Charities Number: NIC104846



Annual report and financial statements for the year ended 31 December 2024

Contents

	Pages
References and administrative details of the Charity	2
Trustees' report	3 - 6
Independent Examiner's Report to the Trustees	7
Receipts and payments account	8
Statement of assets and liabilities	9
Notes to the financial statements	10-17

Christ Church Castledawson

References and administrative details

Charity Name: Christ Church Castledawson
Charity Registration Number: NIC104846
Contact Address: 12 Station Road
Castledawson
Magherafelt
BT45 8AZ
Northern Ireland

Trustees

Rev Canon Colin Welsh
Noel Reid
Noel McCulloch
Helen McCulloch
Maureen Winn – replaced 8 April 2024
Robert Winton – appointed 8 April 2024
Samuel Kirkpatrick
Alan Campbell
Gary Borland
Joyce Campbell
Ivan Young
Isobel Kerr
Jason Stewart
Hazel Gilmour – replaced 8 April 24
Andrew Bell – appointed 8 April 24
Gillian Atkinson
Anne Reid
Noel Chambers
Andrew Branagh

Principal Office-bearers

Clergy:	Reverend Canon Colin Welsh
Honorary Treasurer:	Mr Andrew Branagh
Honorary Secretary:	Mrs Joyce Campbell
Rector's Churchwarden:	Mr Jason Stewart
People's Churchwarden:	Mrs Gillian Atkinson

Independent Auditor

David Lyttle + Co Ltd
15 Meeting Street
Magherafelt
Co Londonderry
BT45 6BN

Principal Bankers

Danske Bank
Donegall Square West
Belfast
BT1 6JS

Christ Church Castledawson

Trustees' Annual Report for the year ended 31 December 2024

The Trustees present the annual report and statements of Receipts and Payments and Assets and Liabilities for the Church for the year ended 31 December 2024

Objectives and Activities

The charitable purpose of the Church of Ireland is the advancement of the Christian religion.

The principal function of the Parish of Christ Church Castledawson is to support the advancement of the Christian religion by promoting, through their work, the whole mission of the Church; pastoral, evangelical, social and ecumenical. Being open to and engaging with society as a whole and offering support to those needing help are fundamental to the practical delivery of the benefits of Christianity.

As a result of activity in the pursuit of the advancement of the Christian religion, the Parish of Christ Church Castledawson has custody of property and of records, materials and artefacts of significance to the cultural and religious heritage and maintenance of which is undertaken by the Select Vestry of the Parish of Christ Church Castledawson.

The activities of the charity

At the heart of Christ Church Parish is a passionate desire to glorify God and demonstrate His love. This was achieved through our varied Sunday services which took place at 10am, 11:30am and occasionally (monthly) at 8:30am and 6pm.

Additional events and special services took place during Christian festival seasons such as Lent; Holy Week; Easter, Harvest, Remembrance Sunday, Advent and Christmas. This year we also ran a three night gospel mission in May.

Sunday School is a vital part of what we do as a church. Each Sunday from September- June (except the last Sunday in the month when we have an all-age service) Sunday School classes are held in our parish halls for children from age 4-16 years.

Our Sunday School offers various age groups a chance to explore God's word and enjoy fellowship in a relaxed and welcoming atmosphere. We also have a crèche facility which caters for under 4 years.

Other church groups including Women's Fellowship, mid-week Prayer Meeting and Bible Study, Bowling Club, Dance Class, Mums and Tots, and Home groups provide opportunities to enjoy fellowship with each other and be built up by one another in a practical Christian focused way.

Our Halls are also normally used to regularly facilitate, Scouts, worship band practice, ladies bible study groups, prayer meetings, and 2 local community based choirs. Occasional hall use would include funeral teas, children's birthday parties and various fundraising activities.

In addition to Sunday and other Church services such as funerals and weddings our church building is used for church choir practices.

The Rectory is used to facilitate marriage preparation classes, confirmation preparation classes, occasional vestry meetings, occasional strategy group meetings and other private pastoral consultations throughout the year.

We recognise that there are issues in our Parish for individuals that stem from sickness, bereavement, ageing, incapacity, and those receiving medical treatment, care in both hospitals and local nursing homes. We are committed to helping these people in need with empathy, sympathy, love and compassion. This is done through occasional visits, the offer of private Holy Communion and prayer. Helping those in need, in this way, is a demonstration of our faith, 'we try to do as Jesus did!'

Trustees' Annual Report for the year ended 31 December 2024 (continued)

We also actively seek to reach out into our community through a range of caring and educational programmes for young people. These projects include Sunday School, young people's group, Ambassadors Football holiday bible club. Our Church also supports a reading assistance programme (Equipping for Life) in the local school with volunteers from our parish offering 1hr per week each to help children in the school with their literacy. Our Harvest tractor run and 'Christmas Lights Tractor Run' served as a means of engaging with and blessing all age groups in the wider community.

Fund raising

This year it was felt by the trustees that a 'Parish Gift Day' should be called in support of Parish Funds, this was well supported by many of our parishioners and proved to be most successful. The purpose of our charitable fundraising is not only for our own costs, for example, our General Church Fund or Mustard Seed Fund but also for a variety of charitable needs e.g. our Pentecost barbecue (in support of Christian Aid) along with other social events aimed at supporting other charitable causes, such events served as opportunities to improve social cohesion, reduce social isolation and bring a greater sense of togetherness.

This is a tangible demonstration of our mission and outreach and awareness that, as Christians, we are called to support a range of good causes.

Activities such as concerts, birthday parties and other fund-raising events including: Car Boot Sale; Charity Golf Day; Table Quiz; Car Treasure Hunt; Autumn Tractor Run; were open to the whole of the church and also the wider community

At all times we keep in mind our Safeguarding Trust policy, Health and Safety requirements and catering regulations.

We have endeavoured to adhere to the Charity Commission for Northern Ireland's guidance on public benefit to ensure that the activities entered into during the year have helped to benefit the whole of the community and achieve the Parish's objectives.

Missions and evangelism

Another part of the vision for Christ Church Castledawson is the outreach to the local community with events such as our recently formed Community Choir which is made up of a cross section of singers from various faith based groups in the local community. This year we were able to financially support a range of missionary societies such as Church Army, Churches Ministry of Healing and the Bible Society (see financial report).

Mission also extends beyond Ireland and established relationships and donations from Christ Church help to support different missionary societies abroad such as: Christian Aid; Crosslinks; The Leprosy Mission and SAMS (see financial report).

Achievements, Performance & Public Benefit

Central to the work at all levels in the Parish is teaching God's word, to bring parishioners into a deeper relationship, knowledge and understanding of Jesus Christ as Lord and Saviour, so that they are thoroughly equipped and empowered to reach out into the community, both within and beyond the Parish boundaries.

Christ Church continues to offer a range of services over the course of the year that we hope our community find both beneficial and spiritually fulfilling. We further hope that all who enter our buildings do so feeling welcome, safe, warm and secure.

Our continuing desire is to reach out to all, seeking to transform the local community and build a Christ centred congregation which will be a witness for Jesus Christ and work for the advancement of His Kingdom. In May we ran a three night Gospel mission which was greatly supported by our parishioners and the wider community.

The direct benefit of participation in Church life includes the enjoyment of public worship and giving and receiving of pastoral ministry, improved understanding of Holy Scripture, increased application of Christian biblical morals and ethics and improved values relating to civic engagement.

Trustees' Annual Report for the year ended 31 December 2024 (continued)

The expression of the precepts of the Christian religion through engagement with the general public, both in person and (when practicable) online, and in particular with the disadvantaged, the sick, the elderly and the young is a public benefit. This can normally be measured and evidenced through pastoral visitation, increased social integration and pastoral care delivered at the point of need.

Overall, the beneficiaries of Christ Church Castledawson are the general public and the public valuation of the benefits can be evidenced through attendance at public worship, participation in Church governance and willingness to support the continuing witness of the Church through financial contributions. The wider benefit to the public is the availability of a place for worshipping in the course of Christian outreach and the facilitation of weddings, funerals, baptisms and confirmations.

Any private benefit arising out of the fulfilment of our Christian ministry or to lay staff is essential to the fulfilment for the purpose of religion. No elected Trustee receives remuneration, reward or other private benefit for carrying out their Trustee responsibility.

Also, the direct benefits flowing from the purpose of the Church includes the provision of archive records, public enjoyment of historic buildings and artefacts such as Church plate, furnishings and materials as an overall improved appreciation of a longstanding Christian heritage. This is demonstrated through on-going provision of access to records and the use made of these records in, for example, research and genealogy, through conservation efforts in respect of records, property and artefacts and the subsequent requests for access and use of our materials by the wider society. We sometimes receive requests for family information from individuals from around the world.

To mitigate risk of harm to any persons, the Trustees ensure adequate health and safety measures are in place at Christ Church. Also, child protection (Safeguarding Trust Policy), Access NI checks and training opportunities are in place for those involved in children and youth work or working with Adults at Risk.

No private benefit is received from Trustees fulfilling their responsibilities in respect of buildings, artefacts or records. In the course of conservation and to make records accessible to the public, no professional staff is engaged for the fulfilment of the purpose. The beneficiaries are solely the general public.

Financial Review

- The results for the year are set out on page 8, which the Trustees consider to be satisfactory.
- The reserves of the Parish are held for the advancement of its charitable purpose, other than restricted reserves which are held for a designated purpose – see note 15.

Going Concern

The Trustees have reviewed the budgets for the year ahead and are satisfied that there are adequate funds in place to ensure that the Parish can continue its activities and the financial statements for the year ended 31 December 2024 can be signed off as a going concern.

Structure, Governance and Management

Governing Document and Constitution of the Charity

Chapter III of the Constitution of the Church of Ireland governs Parishes and Parochial Organisations. The Select Vestry members are the Charity Trustees.

Recruitment and Appointment of Select Vestry (Trustees)

All members of the Church of Ireland who are over the age of 18 who are annual subscribers of a sum not less than £50.00 per annum and are either resident within the parish or live elsewhere but have been accustomed members of the congregation may register as members of the general vestry of the parish, allowing them to attend and vote at meetings of the general vestry and to stand for election to the Select Vestry. Meetings of the general vestry are held at least once a year. The Select Vestry is elected as part of this general vestry meeting. The Select Vestry will hold their positions for a period of one year. Select Vestry members may be re-elected annually and there is no limit on the number of terms which may be served.

Trustees' Annual Report for the year ended 31 December 2024 (continued)

Organisational Structure

The Select Vestry takes responsibility for the managing of certain activities and decision making within the parish. The Select Vestry consists of the member of the clergy serving in the parish, any curate assistant ("the curate"), the churchwardens, the glebe wardens and generally not more than twelve other members of the general vestry elected at the Easter General Vestry Meeting.

The Select Vestry is chaired by the incumbent or other member of the clergy officiating in the parish. Select Vestry members are responsible for making decisions on matters of general concern and importance to the parish including deciding how parish funds are to be applied.

The select vestry meets at times fixed by the members or by the diocesan synod. Special meetings may be convened at any time by the chairperson or the churchwardens. During the 2024 year the Select Vestry met 6 times for scheduled meetings, and most members attended on a regular basis (81% average attendance) or sent a verbal apology.

Compliance with Public Benefit

The Parish has given careful consideration to the Charity Commission for Northern Ireland's guidance on public benefit to ensure that the activities entered into during the year have helped to achieve the Parish's objectives and activities, as well as providing public benefit.

Statement of Trustees' Responsibilities

The Trustees are responsible for preparing the Trustees' Report and the statement of receipts and payments and statement of assets and liabilities in accordance with applicable law and regulations.

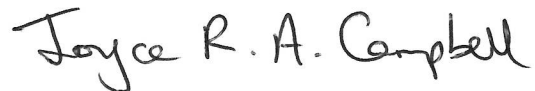
The law applicable to charities in Northern Ireland with Income of less than £250,000 requires the Trustees to prepare a statement of receipts and payments and a statement of assets and liabilities for each financial year.

The Trustees are responsible for keeping accounting records that are sufficient to show and explain the Parish's transactions and disclose with reasonable accuracy at any time the assets and liabilities of the Parish. They are also responsible for safeguarding the assets of the Parish and hence for taking reasonable steps for the prevention and detection of fraud and other irregularities.

Signed on Behalf of the Trustees



Andrew Branagh
Trustee



Joyce Campbell
Trustee

11 July 2025

Independent Examiner's Report to the Trustees of Parish of Christ Church Castledawson

I report on the accounts of the Trust for the year ended 31 December 2024, which are set out on pages 8 to 17.

Respective responsibilities of charity trustees and examiner

As the charity's Trustees, you are responsible for the preparation of the accounts in accordance with the Charities Act (Northern Ireland) 2008.

It is my responsibility to:

- examine the accounts under section 65 of the Charities Act
- follow the procedures laid down in the general directions given by the Commission under section 65(9)(b) of the Charities Act
- state whether particular matters have come to my attention.

Basis of independent examiner's report

I have examined your charity accounts as required under section 65 of the Charities Act and my examination was carried out in accordance with the general Directions given by the Charity Commission for Northern Ireland under section 65(9)(b) of the Charities Act.

My examination included a review of the accounting records kept by the charity and a comparison of the accounts presented with those records. It also included consideration of any unusual items or disclosures in the accounts and seeking explanations from you as charity Trustees concerning any such matters.

My role is to state whether any material matters have come to my attention giving me cause to believe:

1. That accounting records were not kept in accordance with section 63 of the Charities Act
2. That the accounts do not accord with those accounting records
3. That the accounts do not comply with the accounting requirements of the Charities Act
4. That there is further information needed for a proper understanding of the accounts to be reached.

Independent examiner's statement

I have completed my examination and have no concerns in respect of the matters (1) to (4) listed above and, in connection with following the Directions of the Charity Commission for Northern Ireland, I have found no matters that require drawing to your attention.



Stephen McGeagh BA Hons FCA CTA
for and on behalf of David Lyttle + Co Ltd
Chartered Accountants
Statutory Auditors

11 July 2025

15 Meeting Street
Magherafelt
Co Londonderry
BT45 6BN

Receipts and Payments Account for the year ended 31 December 2024

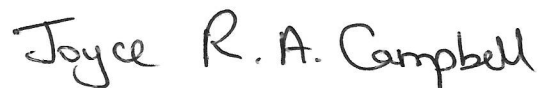
	Note	Unrestricted Funds 2024 £	Restricted Funds 2024 £	Total 2024 £	Total 2023 £
<u>Receipts</u>					
Sustentation		83,388.90	-	83,388.90	62,935.90
Plate Collection		4,949.85	-	4,949.85	4,751.24
Special Collections	2	850.00	938.00	1,788.00	3,003.55
Increase/decrease in Valuation of Investments		-	4,985.95	4,985.95	3,672.20
Bank & Deposit Interest		422.25	216.99	639.24	259.66
Investment Income	3	127.16	-	127.16	129.70
Building Maintenance Fund	4	-	1,533.25	1,533.25	1,682.50
Church Ancillary Centre Project	5	-	9,704.37	9,704.37	22,589.83
Other receipts	6	29,025.35	2,535.57	31,560.92	25,344.59
Receipts regarding Organisations	7	-	3,478.83	3,478.83	2,849.11
Revenue Grants	8	-	1,275.00	1,275.00	6,155.00
Total Receipts		118,763.51	24,667.96	143,431.47	133,373.28
<u>Payments</u>					
Diocesan Assessment		69,364.96	-	69,364.96	66,761.04
Church Running Costs	9	7,735.67	874.75	8,610.42	9,410.40
Rectory Running Costs	10	3,778.11	-	3,778.11	4,091.59
Parish Hall Running Costs	11	5,704.09	348.00	6,052.09	5,062.95
Administration Costs	12	8,567.78	3,016.01	11,583.79	15,248.78
Charitable Donations	13	2,255.00	2,583.00	4,838.00	3,043.55
Payments regarding Organisations	14	-	3,334.75	3,334.75	3,735.37
Total Payments		97,405.61	10,156.51	107,562.12	107,353.68
Excess of Receipts over Payments for the year before transfers		21,357.90	14,511.45	35,869.35	26,019.60
Capital Payments - Church Ancillary Centre		-	-	-	-
Capital Grants Received		-	-	-	-
Transfers		-	-	-	-
Excess of Receipts over Payments for the year		21,357.90	14,511.45	35,869.35	26,019.60

Signed on Behalf of the Trustees



Andrew Branagh
Trustee

11 July 2025



Joyce Campbell
Trustee

Statement of Assets and Liabilities as at 31 December 2024

	Unrestricted Funds	Restricted Funds	Endowment Funds	Total Funds	Total Funds
	2024	2024	2024	2024	2023
	£	£		£	£
Funds Reconciliation					
Bank and Cash at start of year	30,697.02	91,089.34	20,000.00	141,786.36	119,438.96
Net movement in funds	21,357.90	9,525.50	-	30,883.40	22,347.40
Bank and Cash at end of year	52,054.92	100,614.84	20,000.00	172,669.76	141,786.36
Bank & Cash Balances					
Current Accounts	41,511.55	12,031.39		53,542.94	96,442.13
Deposit Accounts	10,543.37	86,392.13	20,000.00	116,935.50	43,449.24
Cash	-	2,191.32		2,191.32	1,894.99
Total Cash Funds	52,054.92	100,614.84	20,000.00	172,669.76	141,786.36
	15				
OTHER ASSETS					
Investment Assets					
Equity Investments	-	-		-	-
Investments in RCB / CIT Unit Trusts	-	110,845.48		110,845.48	105,859.53
Other unlisted investments	-	-		-	-
Total Investment Assets	-	110,845.48		110,845.48	105,859.53
	16				
Assets retained for the Parish's own use					
Church Hall				300,000.00	300,000.00
Scout Hall				125,000.00	125,000.00
Rectory				250,000.00	250,000.00
Church Ancillary Centre				65,000.00	65,000.00
Total Assets retained for the Parish's own use				740,000.00	740,000.00

Signed on Behalf of the Trustees



Andrew Branagh
Trustee



Joyce Campbell
Trustee

11 July 2025

Notes to the financial statements for the year ended 31 December 2024

1. Accounting policies

Set out below are the principal accounting policies which have been adopted in the compilation of the Receipts and Payments Account and the Statement of Assets and Liabilities

(a) Receipts and Payments Account

All items of income and expenditure included within the Receipts and Payments Account have been accounted for on a cash receipts basis.

(b) Fund Accounting

Endowment funds are funds, the capital of which must be retained either permanently or at the Trustees' discretion; the income derived from the endowment is to be used either as restricted or unrestricted income funds depending upon the purpose for which the endowment was established in the first place.

Restricted funds comprise of revenue donations or grants for a specific parish activity intended by the donor.

Unrestricted funds are income funds which are to be spent on the parish's general purposes.

Designated funds are general income set aside by the trustees for use in the future.

(c) Statement of Assets and Liabilities

(i) Assets retained for the Parish's own use

The assets of the Parish, retained for its own use comprise: -

- Church Buildings and Graveyard
- Parish Hall
- Rectory
- Scout Hall
- Church Ancillary Centre

The Church Building and Graveyard are deemed to be Heritage assets as defined by the Charities SORP (FRS102). These Heritage assets are not included in the statement of assets and liabilities as information on the cost or valuation is not available and such information cannot be obtained at a cost commensurate with the benefit to the users of the accounts and to the parish.

The Parish Hall, Rectory and Glebe land has been recognised on values which the Select Vestry deem to represent the estimated fair value of the property at 1 January 2017. No depreciation has been provided on this building as the current estimated residual value is not less than its carrying value and the remaining useful life currently exceeds 50 years.

All other fixed assets (retained for own use) are valued at cost.

ii) Investments

Fixed asset investments comprising investment properties, investments in equities (ordinary shares) and investment in RCB/CIT Unit Trusts are initially recorded at cost and are then subsequently stated at fair value at each year end date. Investments in unquoted investments are recorded at cost and are assessed annually for impairment.

Notes to the financial statements for the year ended 31 December 2024 (continued)

2. Special collections

Donor	Unrestricted 2024 £	Restricted 2024 £	Total 2024 £	Total 2023 £
3 Day Mission	850.00	-	850.00	-
Bishops' Appeal Turkey Earthquake	-	-	-	735.00
Confirmation Service	-	-	-	125.00
Christian Aid collection (Pentecost BBQ)	-	938.00	938.00	1,113.55
"The Promise of a Saviour" concert	-	-	-	1,030.00
TOTAL	850.00	938.00	1,788.00	3,003.55

3. Investment income

Donor	Unrestricted 2024 £	Restricted 2024 £	Total 2024 £	Total 2023 £
Progressive Building Society - 3 yr bond interest rec'd	127.16	-	127.16	129.70
TOTAL	127.16	-	127.16	129.70

4. Building maintenance fund

Donor	Unrestricted 2024 £	Restricted 2024 £	Total 2024 £	Total 2023 £
Parishioners - Organ Maintenance Fund	-	140.00	140.00	409.00
Parishioners - New Car Park at Church Fund	-	140.00	140.00	513.00
Parishioners Donations	-	510.00	510.00	90.00
Donation in memory of - late William Quigley	-	-	-	250.00
In lieu of flowers - late Norman Doherty	-	500.00	500.00	-
Gift Aid recovered * - Main Building Fund	-	12.75	12.75	235.00
Gift Aid recovered * - Organ Maintenance Fund	-	102.25	102.25	86.00
Gift Aid recovered * - New Church Car Park Fund	-	128.25	128.25	99.50
TOTAL	-	1,533.25	1,533.25	1,682.50

Christ Church Castledawson

Notes to the financial statements for the year ended 31 December 2024 (continued)

5. Church Ancillary Centre Project	Unrestricted	Restricted	Total	Total
	2024	2024	2024	2023
Donor	£	£	£	£
Parishioners Donations	-	1,702.00	1,702.00	3,043.00
Other Donations	-	80.00	80.00	750.00
Donations in memory of late Jennifer Kennedy	-	1,300.00	1,300.00	-
Donations in memory of late Jenny Boyle	-	145.00	145.00	-
Donation LOL 96 & 97	-	100.00	100.00	-
Donation NIE Charities Committee	-	-	-	1,000.00
Abba Concert	-	-	-	1,020.00
Car boot sales	-	-	-	460.52
Charity football match	-	-	-	574.20
Charity Supper Dance	-	1,830.00	1,830.00	-
Church Mouse	-	3,792.50	3,792.50	2,416.90
Duck Race/Family Fun Night	-	-	-	2,984.31
Festive Lights Santa Tractor Run	-	-	-	840.50
Golf Tournament	-	-	-	5,020.00
Holy Week Community Choir event	-	-	-	121.00
Spring Craft Fair/Coffee Morning	-	-	-	798.00
Spring Tea Dance	-	-	-	1,685.00
Easy Fundraising Organisation	-	-	-	17.43
HMRC - Gift Aid recovered *	-	754.87	754.87	1,497.97
	-	9,704.37	9,704.37	22,228.83

6. Other receipts	Unrestricted	Restricted	Total	Total
	2024	2024	2024	2023
Donor	£	£	£	£
Gift Aid*	11,672.72	-	11,672.72	10,921.96
Gift aid interest	178.44	-	178.44	141.40
Donations	755.00	-	755.00	637.34
Donations - anonymous Gift Day	583.00	-	583.00	-
Donations for CMS	-	-	-	20.00
Donations - Sunday School outing	185.00	-	185.00	-
Donation - Easter morning breakfast	-	-	-	90.00
Donation - Women's Fellowship	1,500.00	-	1,500.00	1,000.00
Donations Coronation celebrations	-	-	-	1,037.08
Energy Support payments	-	-	-	1,800.00
Use of Hall	4,210.00	-	4,210.00	3,915.00
Use of Scout Hall	500.00	-	500.00	625.00
COI Gazette Subscriptions	237.50	-	237.50	225.00
CIT & RCB Distribution: Adamson Bequest	1,153.88	790.57	1,944.45	1,865.63
RCB Distribution: S Hammersley Bequest	55.90	-	55.90	51.54
RCB Distribution: TJ McCombe Bequest	742.66	-	742.66	684.64
Graveyard Fees and Headstones	300.00	-	300.00	1,100.00
Treasure hunt/BBQ	700.00	-	700.00	480.00
Baptismal Thank Yous	60.00	-	60.00	250.00
Marriage Thank Yous/Fees	650.00	-	650.00	500.00
Big Bottle in Church Porch	35.00	-	35.00	-
Golf Tournament	3,390.00	-	3,390.00	-
Festive lights Santa tractor run	676.81	-	676.81	-
Church Mouse (including premises rent)	1,424.00	-	1,424.00	-
Community Choir event	-	1,645.00	1,645.00	-
Easy fundraising	15.44	-	15.44	-
Shoe box appeal	-	100.00	100.00	-
TOTAL	29,025.35	2,535.57	31,560.92	25,344.59

* Gift Aid receipts relate to amount received in respect of donations for 2023. The amount of £14,465.43 will be claimed for 2024 donations.

Notes to the financial statements for the year ended 31 December 2024 (continued)

7. Receipts regarding Organisations

	Unrestricted 2024 £	Restricted 2024 £	Total 2024 £	Total 2023 £
Bowling Club	-	390.11	390.11	250.00
Women's Fellowship	-	1,786.72	1,786.72	1,961.11
Dance Class	-	1,040.00	1,040.00	421.00
Toddle Inn	-	262.00	262.00	217.00
TOTAL	-	3,478.83	3,478.83	2,849.11

8. Revenue grants

	Unrestricted 2024 £	Restricted 2024 £	Total 2024 £	Total 2023 £
MUDC - Santa Tractor Run 2022	-	-	-	480.00
MUDC - Santa Tractor Run 2023	-	375.00	375.00	375.00
MUDC - Santa Tractor Run 2024 (1st payment)	-	375.00	375.00	-
MUDC Small Development grant (1st payment)	-	525.00	525.00	-
National Lottery Community Grant - Coronation Garden Party	-	-	-	5,300.00
	-	1,275.00	1,275.00	6,155.00

9. Church running costs

	Unrestricted 2024 £	Restricted 2024 £	Total 2024 £	Total 2023 £
Electricity	335.05	-	335.05	364.12
Maintenance including Fire & Security charges	228.65	-	228.65	621.12
Heating Oil	734.93	-	734.93	1,052.57
Groundsman	1,250.00	-	1,250.00	1,250.00
Lawnmower repairs/parts/ fuel	-	40.00	40.00	162.70
Guest Preachers/Speakers	100.00	-	100.00	-
Organists 2022 & 2023	-	-	-	2,000.00
Organist 2024	1,000.00	-	1,000.00	-
Organ tuning	-	200.00	200.00	-
Maintenance of Building & Grounds	109.42	-	109.42	447.37
Repairs (all property)	253.46	634.75	888.21	-
Sundry Expenses	45.00	-	45.00	-
Insurance (all property)	3,679.16	-	3,679.16	3,512.52
TOTAL	7,735.67	874.75	8,610.42	9,410.40

10. Rectory running costs

	Unrestricted 2024 £	Restricted 2024 £	Total 2024 £	Total 2023 £
Rates	1,018.02	-	1,018.02	1,011.56
Electricity	1,281.16	-	1,281.16	994.37
Heating Oil	1,457.94	-	1,457.94	2,085.66
Repairs	20.99	-	20.99	-
	3,778.11	-	3,778.11	4,091.59

Notes to the financial statements for the year ended 31 December 2024 (continued)

11. Parish Hall running costs	Unrestricted 2024 £	Restricted 2024 £	Total 2024 £	Total 2023 £
Electricity	1,752.76	-	1,752.76	1,433.25
Heating Oil	1,456.35	-	1,456.35	2,595.35
Sundries	278.46	-	278.46	180.81
Water rates	381.52	-	381.52	347.31
Carpark floodlights	-	-	-	359.92
Carpark wall repairs repairs & Maintenance	1,835.00	-	1,835.00	-
	-	348.00	348.00	146.31
	5,704.09	348.00	6,052.09	5,062.95
12. Administration costs	Unrestricted 2024 £	Restricted 2024 £	Total 2024 £	Total 2023 £
Audit & Accountancy 2022	1,080.00	-	1,080.00	-
Audit & Accountancy 2023	1,200.00	-	1,200.00	-
Bank fees	251.67	46.32	297.99	265.75
Printing Postage & Stationery	1,269.20	-	1,269.20	1,256.80
COI Gazette Subscriptions	237.50	-	237.50	225.00
Donation towards missionary trip	-	-	-	100.00
Gifts	-	-	-	500.00
Christian Copyright Licensing Certificate	277.00	-	277.00	266.00
Adamson Bequest - Rector	-	1,130.27	1,130.27	389.11
Parish Pump Membership	51.99	-	51.99	49.99
Rector's Office Allowance	844.00	-	844.00	884.00
Scout Hall - heating oil	168.53	-	168.53	429.98
Scout Hall - electricity	190.76	-	190.76	124.90
Scout hall - water rates	116.43	-	116.43	110.58
Church Ancillary Centre - electricity	-	-	-	10.40
Church Ancillary Centre - Survey	-	510.00	510.00	-
Church Ancillary Centre - Venture Consultancy fees	-	1,200.00	1,200.00	-
Church Mouse - Rent	1120.00	-	1,120.00	-
Coronation Garden Party expenses	-	-	-	3,375.60
Gazebos - Coronation Garden Party expense	-	-	-	1,398.00
Tables - Coronation Garden Party expense	-	-	-	1,950.00
Golf Tournament Expenses	-	-	-	720.00
Festive lights Santa tractor run expenses 2022	-	-	-	755.00
Festive lights Santa tractor run expenses 2023	120.58	129.42	250.00	620.58
Family Fun night & Duck Race expenses	-	-	-	1,003.60
Expenses for events	-	-	-	15.40
Food for events	398.00	-	398.00	-
Defibrillator batteries	576.00	-	576.00	-
Summer Madness - minibus hire	-	-	-	145.00
Sunday School books/prizes	230.00	-	230.00	236.88
Sunday School McDonalds	73.83	-	73.83	-
Sunday School outing	342.55	-	342.55	-
First aid supplies	-	-	-	89.98
Prayer ministry training	-	-	-	36.00
Sundries	19.74	-	19.74	290.23
TOTAL	8,567.78	3,016.01	11,583.79	15,248.78

Christ Church Castledawson

Notes to the financial statements for the year ended 31 December 2024 (continued)

13. Charitable donations	Unrestricted	Restricted	Total	Total
	2024	2024	2024	2023
	£	£	£	£
British Heart Foundation	5.00	-	5.00	1,030.00
Christian Aid	-	938.00	938.00	1,113.55
Church Army	250.00	-	250.00	-
Crosslinks	250.00	-	250.00	-
Church Mission Society	250.00	-	250.00	40.00
The Bible Society	250.00	-	250.00	-
The Church Ministry of Healing	250.00	-	250.00	-
The Leprosy Mission	250.00	-	250.00	-
South American Missionary Society (SAMS)	250.00	-	250.00	-
International Justice Mission	250.00	-	250.00	-
STEP Draperstown	250.00	-	250.00	-
Bishops' Appeal Turkey Earthquake	-	-	-	735.00
Diocesan Ministry Fund	-	-	-	125.00
ALPS	-	822.50	822.50	-
Olive Branch	-	822.50	822.50	-
TOTAL	2,255.00	2,583.00	4,838.00	3,043.55

14. Payments regarding Organisations	Unrestricted	Restricted	Total	Total
	2024	2024	2024	2023
	£	£	£	£
Bowling Club	-	145.48	145.48	286.86
Women's Fellowship	-	1,942.50	1,942.50	2,894.95
Dance Class	-	1,042.00	1,042.00	419.00
Toddle Inn	-	204.77	204.77	134.56
TOTAL	-	3,334.75	3,334.75	3,735.37

Notes to the financial statements for the year ended 31 December 2024 (continued)

15. Movement in Cash Funds

	At 1 Jan 2024 £	Incoming Resources £	Outgoing Resources £	T'fers In £	T'fers Out £	At 31 Dec 2024 £
Restricted funds						
Special Collections	-	938.00	(938.00)	-	-	-
Building Maintenance Fund	-	1,022.75	(1,022.75)	-	-	-
Church Ancillary Centre Project	72,571.94	9,921.36	(1,756.32)	-	-	80,736.98
Camera / Security Fund	583.02	-	-	-	-	583.02
Organ Maintenance Fund	5,634.95	242.25	(200.00)	-	-	5,677.20
New Church Car Park Fund	4,646.67	268.25	-	-	-	4,914.92
Bowling Club	4,615.74	390.11	(145.48)	-	-	4,860.37
Women's Fellowship	1,734.16	1786.72	(1,942.50)	-	-	1,578.38
Dance Class	2.00	1,040.00	(1,042.00)	-	-	-
Toddle Inn	1,206.74	262.00	(204.77)	-	-	1,263.97
Other amounts for specific expenditure	339.70	2,535.57	(2,775.27)	-	-	100.00
MUDC 2023 Comm.Grant	(245.58)	375.00	(129.42)	-	-	-
MUDC 2024 Comm.Grant	-	375.00	-	-	-	375.00
MUDC 2024 Small Dev.Grant	-	525.00	-	-	-	525.00
	91,089.34	19,682.01	(10,156.51)	-	-	100,614.84
Endowment Funds						
Bequest	20,000.00	-	-	-	-	20,000.00
	20,000.00	-	-	-	-	20,000.00
Unrestricted funds						
General Fund	30,697.02	118,763.51	(97,405.61)	-	-	52,054.92
	30,697.02	118,763.51	(97,405.61)	-	-	52,054.92
Total funds	141,786.36	138,445.52	(107,562.12)	-	-	172,669.76

Purposes of Restricted Funds

- Special collections Fund: This is money held for specific charitable purposes
- Building Maintenance Fund: This is a fund to assist with the cost of maintaining and repair of the Parish Buildings and grounds
- Church Ancillary Centre Project: This is a fund to assist with the development of a Church Ancillary Centre.
- Camera Fund: This is a fund to assist with the cost of installing a camera system at the Church and Hall.
- Organ Maintenance Fund: This is a fund to assist with the cost of maintaining and repair of the organ.
- New Church Car Park Fund: This is a fund to assist with building a new Church Car Park.
- Bowling Club: This is a fund for the use of the Bowling Club.
- Women's Fellowship: This is a fund for the use of the Women's Fellowship.
- Dance class: This is a fund to cover dance class expenses.
- Toddle Inn: This is a fund for the use of Mums & Tots group.
- Other amounts: Restricted funds received before 31 December 2024 paid out after 31 December 2024

Purpose of Endowment Fund

- Bequest: This is a fund to be invested in perpetuity with the income used as the Trustees determine appropriate.

Christ Church Castledawson

Notes to the financial statements for the year ended 31 December 2024 (continued)

16. Investment Assets

	Representative Church Body	Church of Ireland Trustees	Total
	£		£
Opening value at 1 Jan 2024	67,037.53	38,822.00	105,859.53
Changes in valuation	1,244.64	3,741.31	4,985.95
Additions	-	-	-
Disposals	-	-	-
Closing value at 31 Dec 2024	68,282.17	42,563.31	110,845.48

17. Transactions with the Trustees

The parish paid expenses of £3,778.11 relating to the running costs of the glebe house which is occupied by the rector. No trustee received any remuneration during the year except for 1 trustee who received £1,000 as organist fee for 2024 and 1 trustee who received £1835 for repairs to Carpark wall.

A number of trustees were reimbursed for expenses totaling £862.70 during the year.

In addition, the rector was paid £1,130.27 in relation to the Adamson Bequest

The rector was also paid £884 being office expenses payment for 2024.

18. Governance Costs

Governance costs of £900 were incurred during the year 2024 of which £900 relates to fees to be paid to the independent examiner. Governance costs are included within Administration costs in the Receipts and Payments Accounts.