

ROSIE'S  
TRUST



# ANNUAL REPORT

and Financial Statements

YEAR ENDED 31 MARCH 2025

Charity Registration Number NIC102422

Generously supported by





# ROSIE'S TRUST, THE ONLY CHARITY IN NORTHERN IRELAND THAT CARES FOR PEOPLE BY CARING FOR THEIR PETS

## Contents

Message from the Chair	03
Information About Rosie's Trust	09
Who We Are and What We Do	10
Public Benefit	11
Highlights of the Year 2024 – 2025	12
Thank You To All Our Wonderful Volunteers	30
And Thank You Again To Our Most Generous Supporters	37
Financial Position and Reserves	38
Statement of Trustees' Responsibilities	38
Report of the Independent Examiner	39
Statement of Financial Activities	40
Balance Sheet	41
Notes to the Financial Statements	42

## MESSAGE FROM THE CHAIR



Rosie's Trust marked a milestone year in more ways than one during 2024-2025. Not only did we celebrate our 10th birthday, but we also achieved record financial growth enabling us to support more beneficiaries and companion pets than ever before. We also forged new partnerships, got ready to roll out new branding, and began work to transform our volunteer management processes to help secure our ongoing sustainability.

Our birthday celebrations got off to an unexpected but heartwarming start on 20 January. Danielle from The Doggie Pawtisserie made a very special dog cake especially for the occasion. Margo the whippet was so excited at the photo shoot that she could not wait for the photo to be taken before eating the 'R' out of the Rosie's Trust biscuit letters. The missing letter served only to highlight the unique character of our wonderful charity in the subsequent flurry of social media posts!

Our increasing social media following has succeeded in motivating many more wonderful people around Northern Ireland to support Rosie's Trust, either through individual donations or by fundraising on our behalf. We are indebted to each and every one of them for their support. They are the backbone of our charity and rightly take centre stage in the 'Highlights' section on pages 12 to 29.

The generous support from our core funder, the National Lottery Community Fund, enabled us to continue to help cancer patients, people receiving end of life care and elderly people with mobility issues to hold on to their companion pets at a time when they need them the most.

We are also so very grateful to the Kingsbridge Foundation, part of the Kingsbridge Healthcare Group, and the John Atcheson Foundation for their continued support this year. This additional income allowed us to employ a second Development Officer and thereby support a record number of beneficiaries across the four HSC Trust areas in which we operate.

We were delighted to enter into a new partnership with Belfast City Sightseeing. One of their buses is now sporting a large poster promoting Rosie's Trust

around central Belfast every day of the week. We are very grateful to them for the many different fundraising activities they have undertaken on our behalf.

These are, of course, just three of the many organisations who provided invaluable financial support to us during the period under review. The full list of our generous supporters – both large and small – is provided on page 37 with our huge thanks. Every donation, whatever its size, means so very much to us and can make the difference between being able to take on a new beneficiary or having to turn them away.



'Osie's' Trust's 10th anniversary cake!



Belfast City Sightseeing bus spreads the word!

# MESSAGE FROM THE CHAIR CONTINUED...

## Building relations across all sectors

I was very pleased to meet in January with Gordon Lyons MLA, Minister for Communities, to introduce him to Rosie's Trust. Mr Lyons subsequently sent our introductory PowerPoint presentation to the Minister for Health, Mike Nesbitt MLA, for his information. We are continuing our efforts to build relations in the Public Health Agency in a bid to secure funding in the future.

We are also hoping to develop further partnerships in the private sector through our membership of the NI Chamber of Commerce, which we joined this year.

Another fundraising development was taking our first steps into online sales with the introduction of a retail page with a check out facility on our website. So far, we have used it to sell Christmas cards as well as the merchandise we normally sell at events, such as bandannas, pens, and pin badges. However, we are planning to build on this over time; for example, with pet bereavement cards and other Rosie's Trust branded products.

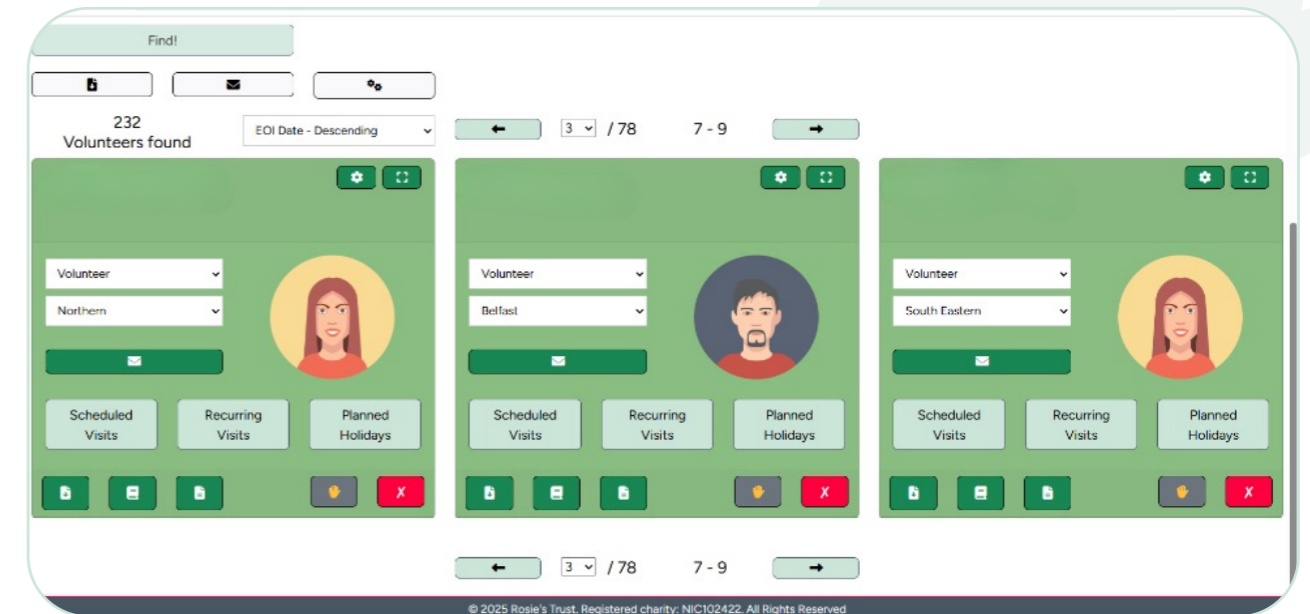
The increased income we received this year enabled us to provide services to a record number of beneficiaries. Rosie's Trust helped 79 cancer patients, people receiving end of life care and/or elderly people with mobility issues to hold on to a total of 97 companion pets. In so doing, we provided an invaluable check-in service for sick and/or elderly people living alone as well as much-needed social contact. We also liaised with social services and other agencies on our beneficiaries' behalf, as and when needed, and helped them navigate the myriad supports available.



**Rosie's Trust helped 79 cancer patients, people receiving end of life care and/or elderly people with mobility issues to hold on to a total of 97 companion pets.**

## Increasing the efficiency of our messaging and our management processes

*Excitement is mounting as our new automated volunteer management tool nears completion...*



The critical role that Rosie's Trust plays in improving the emotional and physical wellbeing of some of the most vulnerable people in our community is not always understood. Sometimes it is the charity's promotion of animal welfare that draws most attention. We were very pleased therefore to receive funds specifically to help us refine our message and highlight the dual role we play in supporting both people and their pets. We have done this by introducing a new strap line to better encapsulate our mission: **'Caring for people by caring for their pets.'** The strap line is the centrepiece of new branding that we are confident will increase our reach to new audiences and, ideally, more supporters (launch June 2025).

Another exciting development this year has been the award of funding from Ulster Garden Villages to help us build an automated volunteer management tool. This will essentially be a self-service portal for the provision of information relating to volunteers, beneficiaries and their companion pets. It will make for a much more efficient, less labour-intensive system than the processes we currently have in place. It will also be hugely beneficial for us when we achieve our long-held ambition to offer services in the more isolated rural areas of the Western Trust. The automated system is due to be completed in May 2025.

The new management processes cannot be introduced soon enough as the number of volunteers who give their time and skills to support Rosie's Trust continues to increase. During the period, we recruited and trained

81 new volunteers bringing the total to 233 active volunteers during the period. This included Wendy Hawe, who is deaf. I would like to take this opportunity to thank Molly Finlay, our Volunteer Support Officer, and Nuala Muldoon, our Fundraising Lead and experienced British Sign Language communicator, for their efforts in ensuring that all the necessary adjustments were made to accommodate Wendy's needs as a new volunteer.

**“Our charity could not operate without our volunteers.”**

We do not take our good fortune with volunteers for granted. We know that our charity could not operate without our volunteers; they go above and beyond to support our beneficiaries and their companion pets. We are indebted to so many volunteers – far more than I could list here – that we publish on pages 30 to 36 the names of each and every one of them with our enormous gratitude. We are truly blessed to have them in our Rosie's Trust family!

# MESSAGE FROM THE CHAIR CONTINUED...

## Expanding our networks

In addition to building relationships with potential funding partners, we have continued this year to engage with a wide range of organisations in the voluntary and community sector as well as the private and public sectors. Such collaborations are essential to increase our reach and impact.



## Rosie's Trust participated at an event in Stormont

calling for regulations to ensure cruelty-free breeding and a public register of legitimate breeders. The event was organised by the NI Companion Animal Welfare Group in September.

This year we significantly expanded our network to include organisations such as Belfast Central Mission, Red Cross, St Vincent de Paul, AGenda, Radius Housing, NI Hospice, Caring for Communities Safe and Well (South Eastern Trust), the Trauma and Orthopaedics Research Charity, the Loneliness Network (Northern and Southern Trust), the Rural Community Network, and the Mid and East Antrim Agewell Partnership. These connections are hugely important in terms of promoting awareness of our services and facilitating two-way referrals.



## Jayne McStay, Operations Manager with Rosie's Trust,

is pictured here (far left) with other members of the Northern Ireland Companion Animal Welfare Group, who met with Andrew Muir, MLA, Minister of Agriculture, Environment, and Rural Affairs, to encourage people to think carefully before getting a pet for Christmas. Hundreds of animals in NI end up in rescue organisations every year following the festive season.

My team was also very pleased to meet with the Office of the Commissioner for Older People, who subsequently promoted the services Rosie's Trust offers among their extensive membership.

Rosie's Trust is represented at all the HSC Trust locality meetings. Our main partners at present, apart from the social workers and care teams with whom we are in daily contact, are organisations such as Macmillan and Marie Curie who are among our principal referral agencies. We also work closely with Volunteer Now.

We are indebted to our Celebrity Ambassadors, Ibe Sesay (presenter of the Drive programme on Q Radio) and Lisa McGee (creator of 'Derry Girls') who have continued to promote our work among their followers throughout the year.



Our wonderful Celebrity Ambassadors, Lisa McGee and Ibe Sesay

## Meeting our resourcing challenges

The price of our success in raising awareness of Rosie's Trust has necessarily been increased demand for our services, which has in turn placed increased pressure on our small staff team.

Our resourcing challenge was compounded this year when two staff (out of a team of 4 full-time and 3 part-time staff) resigned to take up higher paid positions. This led us to engage an external HR consultancy to review our terms and conditions against similar organisations. We were reassured to learn that the majority of our salaries were in line with those offered elsewhere in the sector; we immediately adjusted those that were not.

We welcomed two new staff during the period to fill the vacancies created by the two resignations: Molly Finlay, Volunteer Support Officer, and Robyn McMurray, Communications and Marketing Lead. Both individuals have already proved to be huge assets to Rosie's Trust.

We continued to invest in our staff through personal and professional development. The Board was delighted this year when our Operations Manager, Jayne McStay, was awarded the ILM Level 7 Diploma in Strategic Leadership and Management, which was run by NICVA. Our Development Officer, Laura Quinn, was accepted in March onto the ILM Level 5 Diploma in Leadership and Management, and our new Communications and Marketing Lead, Robyn McMurray, started a Level 3 Management Course run by Global Horizon Skills.

An ongoing challenge we face is demonstrating how labour intensive our services are. We have made some progress in this regard, having undertaken a comprehensive review this year of our monthly reporting data. This now includes the number of hours spent dealing with calls from people who need support in areas that fall well outside the scope of Rosie's Trust. We always give these callers the time they need to explain their issues and then advise them as to where they can obtain the necessary support. The several hundred hours spent moving pets between foster carers are also now recorded.

The demand for foster care – particularly during the summer months – once again placed considerable pressure on staff as demand outstripped our supply of foster carers. As always, our volunteers – and staff – pulled out all the stops and managed to provide foster care for each and every pet requiring it. However, we are now asking all new beneficiaries to try to identify or source alternative arrangements for their pets in the event they require hospital care.

We are also hoping to free up capacity by moving to third party referrals and have developed a new, more succinct online referral form for that purpose. While the form still allows for self-referrals, we include a notice on our website advising that we particularly encourage third party referrals.

**“An ongoing challenge we face is demonstrating how labour intensive our services are.”**



Mya & Mr Buff were two of the dogs we took into foster care this year while their owner was in hospital for several months.

# MESSAGE FROM THE CHAIR CONTINUED...

## Guided by best practice governance

Following the successful introduction last year of a performance appraisal system for our staff, this year I introduced a similar process for the Board of Trustees. This has proved very effective in identifying the training and other needs of the individuals who are responsible for ensuring the efficient and effective daily operation of our charity in accordance with the requirements of the NI Charity Commission.

We were very sad to say farewell in May to Emer Rice who had served as our wonderful Treasurer for three years. Emer very kindly stayed on for several months so that she could hand over to her successor, Lesley Coey. Regrettably, Lesley had to stand down shortly thereafter due to a change in her work commitments. Fortunately, we did not have to wait too long before we welcomed Karen Steele, a long-standing volunteer with Rosie's Trust, to the role in September.

We also farewelled Jill Hawthorne and Louise Heatley as Trustees this year. I take this opportunity to thank them both so very much for the contributions they made to Rosie's Trust and for their ongoing support of the charity.

In order to ensure a good mix of skills on the Board, we sought to fill the gaps arising from these two departures by advertising for Trustees with legal experience. We were delighted to welcome Fiona Holloway-Stone, who brings extensive experience in commercial law, to the Board in March.

The Board continued to follow our annual governance schedule, including reviewing and updating our risk register and operational policies as required. We also updated our Trust Deed, written in 2015, to reflect the more complex charity we govern today. In addition, we updated our comprehensive safeguarding policy and produced an easy-to-read poster highlighting the 5 'Rs' of safeguarding. Thanks to Halifax, we were able to send two staff members to participate in a 'train the trainer' safeguarding course. They then developed a bespoke safeguarding training programme for Rosie's Trust's staff, volunteers, and Trustees.

**SAFEGUARDING**  
Have a concern? Don't ignore it, Report it!

**The 5 Rs**

- 1 RECOGNISE**  
Stay familiar with the advice Rosie's Trust provides in our safeguarding training and policy document so that you are confident you can recognise the different signs and symptoms of potential abuse, harm and neglect.
- 2 RESPOND**  
If you do have a safeguarding concern, it is essential that you respond appropriately. Do not ignore the situation. Reassure the Individual, ask what they would like to happen and let them know what action you may need to take to ensure they are safe.
- 3 REPORT**  
You must report any safeguarding concerns you have without delay. Confidentiality is vital, so only share information with those who are part of the safeguarding process; that is the designated Adult Safeguarding Officers at Rosie's Trust. Call them on 07721 204 061.
- 4 RECORD**  
This is the who, what, why, when and where of safeguarding. Take precise, comprehensive notes that detail everything about your safeguarding concern and record these on Rosie's Trust's Adult Safeguarding Report Form. You should do this as soon as you can.
- 5 REFER**  
It is usually the responsibility of the Adult Safeguarding Officers to pass on safeguarding concerns to the relevant authorities; however, in the unlikely event that you are unable to contact them, that the safeguarding risk is urgent, and you suspect somebody is under immediate or severe threat, please contact the Police directly on 999.

We are all responsible for keeping our beneficiaries, volunteers and staff colleagues safe. This is especially important as many of our beneficiaries are deemed to be 'adults at risk'. If you are worried about a beneficiary or would like to report a concern, please don't delay!

NIC 102422 Thank you for all you do

**Safeguarding Officers:**  
Jayne McStay  
Laura Quinn  
07721 204061

*Our new poster for staff and volunteers highlighting the 5 'Rs' of safeguarding.*

Halifax also provided funding to enable us to produce a range of other training videos for new volunteers. These are a fantastic addition to Rosie's Trust's resources.

I was pleased to be able to thank the Trustees and staff in person at the end of the calendar year with Christmas drinks at the Europa Hotel. I only wish I had the opportunity to meet all our volunteers and supporters so that I could thank them in person, too, for everything they do to make Rosie's Trust such a wonderful and impactful charity!

I am enormously privileged to lead a charity that is so beloved by all who know it. I look forward very much, in the year ahead, to building upon the many achievements secured in the past year and to support even more people in need to keep their companion pets by their side during difficult times.

The future is indeed Rosie, thanks to our dedicated volunteers, staff, Trustees and, of course, the National Lottery Community Fund.

*Aileen Martin*

Aileen Martin, Chair

# INFORMATION ABOUT ROSIE'S TRUST

Charity established under Trust Deed on 20 January 2015.

## Board of Trustees (at the date of approval of the accounts)

Aileen Martin, Chair
Karen Steele, Treasurer
Josephine Mallon, Secretary
Clare Jess
Fiona Holloway-Stone Appointed to the Board March 2025
Gail Lavery
Tim Leonard
Joyce Savage

## The Trustees who resigned between the commencement date of these financial statements and the approval date are listed below:

Emer Rice Resigned May 2024
Jill Hawthorne Resigned August 2024
Louise Heatley Resigned October 2024

## Staff

CEO, Dr Catriona Mac Arthur (0.4 FTE)
Operations Manager, Jayne McStay
Development Officer, Laura Quinn
Development Officer, Aisling Fitzmaurice
Volunteer Support Officer, Molly Finlay
Marketing and Communications Lead, Robyn McMurray (0.8 FTE)
Community Engagement and Fundraising Lead, Nuala Muldoon
Finance Manager, Grainne Evans (Consultant - 0.2 FTE)

## Contact details

Telephone: 0289 1641340  
Mobile: 07721 204 061  
Email: mail@rosiestrust.org  
Postal address: The Fountain Centre,  
2 Queen's Parade, Bangor BT20 3BJ

## Independent Examiner

MTS Chartered Accountants  
Lanyon Quay, 1  
Belfast  
BT1 3LG

## Bankers

Co-op Bank Ltd  
1, Balloon Street  
Manchester  
M60 4EP

Santander UK plc  
Bridle Road  
Bootle  
Merseyside  
L30 4GB

## Registration

Charity Commission for Northern Ireland  
NIC102422

## Taxation Status

As a registered charity, Rosie's Trust has claimed exemption from tax.



# WHO WE ARE AND WHAT WE DO

Rosie's Trust is unique. We are the only charity in Northern Ireland that helps those undergoing cancer treatment, receiving end of life care, and/or older people with mobility issues to keep their pets by their side in the most challenging times.

When someone is faced with a cancer diagnosis, disability or terminal illness, their whole world changes. They have so much to worry about, so much to deal with and the one thing they need - especially those living alone - is the emotional support that their companion pet provides.

They are no longer able to provide their dog or cat with the same level of care they once could and their anxiety about the welfare of their beloved companion only serves to compound their distress.

At the most stressful time of their lives, they may be forced to give up their companion pet and, in so doing, experience tremendous loss, isolation and feelings of guilt.

Some people have reported that they considered delaying or even refusing treatment because they had no one to look after their pet.

Rosie's Trust cares for our beneficiaries' companion dogs and/or cats in their homes when they are no longer able to look after them independently.

We provide fostering services when our beneficiaries need to spend a period of time in hospital or in hospice care. Subject always to our beneficiaries' wishes, we also find new homes for their pets when they are no longer able to care for them, including when they die.

Rosie's Trust also offers a pet bereavement service, providing emotional support to beneficiaries when their companion pet predeceases them.

We provide our services free of charge, 365 days of the year. We depend on donations to cover our service costs, and every penny gifted to us is carefully used.

Our services offer peace of mind for our beneficiaries as they know Rosie's Trust will support them in the care of their companion pet for as long as they need us and our resources permit.

Rosie's Trust services not only help to address loneliness and social exclusion in Northern Ireland, but also to promote animal welfare, in accordance with the Welfare of Animals Act (NI) 2011.

Our team of 200+ committed volunteers are the life force of Rosie's Trust and provide help and support in all aspects of pet care, including feeding, grooming, exercising, play and stimulation, and vet visits.

Our volunteers are our eyes and ears, ensuring when they visit that our beneficiaries are as well as can be and providing welcome social contact for many. Our volunteers work in teams, with each member making two visits a week.

An average of three volunteers is allocated to each beneficiary.

Our volunteers receive intense training before being matched to a beneficiary. This ensures they all have a sound understanding Rosie's Trust's policies and procedures to promote the health and wellbeing of our beneficiaries, their pets, and the volunteers themselves. They are also trained to signpost to partner organisations, wherever necessary.

Since our establishment in 2015, we have served 251 people and 313 pets (as at January 2025). They are located in four of the five Health and Social Care Trusts (Belfast, Northern, Southern and South Eastern).

We undertake a very thorough assessment process of each of our beneficiaries and their pets. This enables us to develop tailored action plans, which take into account and address all the risks we have identified and ensure the best match for the beneficiary with our volunteers. We also have robust safeguarding policies in place to protect our beneficiaries and our volunteers.

Social workers from the Health and Social Care Trusts refer potential beneficiaries to us as do organisations such as Macmillan Cancer Support (NI). Although we particularly encourage third party referrals, we do accept self-referrals.

Our work has been made possible thanks to core funding from the National Lottery Community Fund.



# PUBLIC BENEFIT

The Trustees of Rosie's Trust believe the purpose of the charity satisfies both elements of the public benefit requirement. Rosie's Trust provides a range of benefits to people in Northern Ireland, including:



## 1) The advancement of health or the saving of lives

We maintain the health and wellbeing of both the beneficiary and their companion animal by alleviating the stresses and anxiety felt when they are no longer able to care for their pet independently. We also provide much-needed social contact for people who live alone and regular check-in service.

## 2) The relief of those in need by reason of age, ill-health, disability, financial hardship or other disadvantage

Rosie's Trust supports cancer patients, people receiving end of life care, and elderly people with mobility issues to maintain their relationship with their companion animal. We also work with partner organisations to help beneficiaries overcome other challenges.

## 3) The advancement of animal welfare

Our work to keep people and their pets together supports our beneficiaries in ensuring the care they provide their animal meets the five welfare needs as detailed in the Welfare of Animal Act (Northern Ireland) 2011.

# HIGHLIGHTS OF THE YEAR 2024 – 2025

**“Rosie’s Trust has been a complete godsend. I would be alone in the house and completely lost without you.”**

The impact that Rosie’s Trust has on the lives of so many vulnerable people in Northern Ireland is encapsulated in the heartrending comments we receive in our annual surveys. We contact our beneficiaries every year to obtain feedback on our services so that we can continually improve these and address any issues arising.



We always ask what difference Rosie’s Trust has made to their lives as well as the impact it has had on their mental health. In 2024-2025:

**90%** of our beneficiaries reported that Rosie’s Trust had made a “big difference” to their lives. The remaining 10% said that the charity had made “quite a lot of difference” to their lives.

**95%** believed our services had reduced their stress/anxiety levels.

**82.5%** believed that Rosie’s Trust had reduced their sense of loneliness and isolation.

When asked to explain why the charity had made a big difference to their lives, many of the respondents referred to the “peace of mind” and “comfort” our services have given them; others said that our services have been “life changing” and a “godsend”. To cite just some of the many positive comments:

- “(Rosie’s Trust) has enabled me to focus on cancer surgery and treatment.”
- “The two lovely ladies that I have volunteering really take their time when they visit, and they are sometimes the only people I see in a week.”
- “I thought I was going to have to give (my dog) up, leaving me with no company in the house.”
- “Meeting volunteers and chatting with them has helped me.”
- “It makes my day to have the volunteers coming in.”
- “It is good for me to see somebody and talk to them.”
- “Rosie’s Trust are always available and there to support me, so I am not on my own.”
- “(Rosie’s Trust has) opened up our lives. I used to just go back to bed and so did the dogs.”
- “I couldn’t survive without RT.”
- “I would be lost without Rosie’s Trust.”



**“Every £1 invested in Rosie’s Trust returns £4.36 in social and economic value.”**

Source: Year 2 Social Value Report, Rose Regeneration Economic Development Agency

**Click to watch:**  
World Cancer Day 2025

## More beneficiaries and companion pets supported in 2024 – 2025

Total number of beneficiaries supported:	Total number of companion pets supported:	Total number of active volunteers:	New beneficiaries supported:	New companion pets:
<b>79</b>	<b>97</b>	<b>233</b>	<b>33</b>	<b>42</b>

## Positive impact on our volunteers too!

Our volunteers also reported that Rosie’s Trust had had a very positive impact on their lives, with one volunteer encapsulating the responses received in three short words, describing volunteering with us as a “hugely rewarding experience”. Other comments included:

- “I love what I do and the impact it has on the beneficiary and her dog. It is more than walking the dog; it is being a friend to someone who does not have a family.”
- “I love doing this. It makes me feel good. Not only do I enjoy the walks with an adorable dog, but I enjoy the chat with the beneficiary each day I am there. I feel I am also helping with the loneliness aspect for her as she looks forward to our wee chats.”
- “I love meeting new people, seeing the smile on the beneficiary’s face, knowing I’ve helped a person in need.”
- “Great for the dogs, great for the volunteers and great for the dog owners.”
- “It ticks all the boxes”.
- “I really feel like I am making a big difference to my beneficiary’s life in that they are able to keep their beloved dog without worrying about them not getting exercised.”
- “I have built up such a lovely relationship with both my human and pet beneficiary and I can tell how much of a difference Rosie’s Trust is making to both their lives.”



*Ian Brown helped our inspirational founder, Brouagh O'Neill, set up Rosie's Trust in January 2015 and has been volunteering with us ever since!*

## HIGHLIGHTS OF THE YEAR CONTINUED...

### Busiest year yet for staff and volunteers

No. of new volunteers trained:

**81**

No. of match ups (beneficiaries and volunteers):

**92**

No. of days of foster care provided:

**761**

No. of pets rehomed:

**8**

No. of referrals managed:

**117**

No. of signposting calls:

**390**

No. of hours given by canine support volunteers:

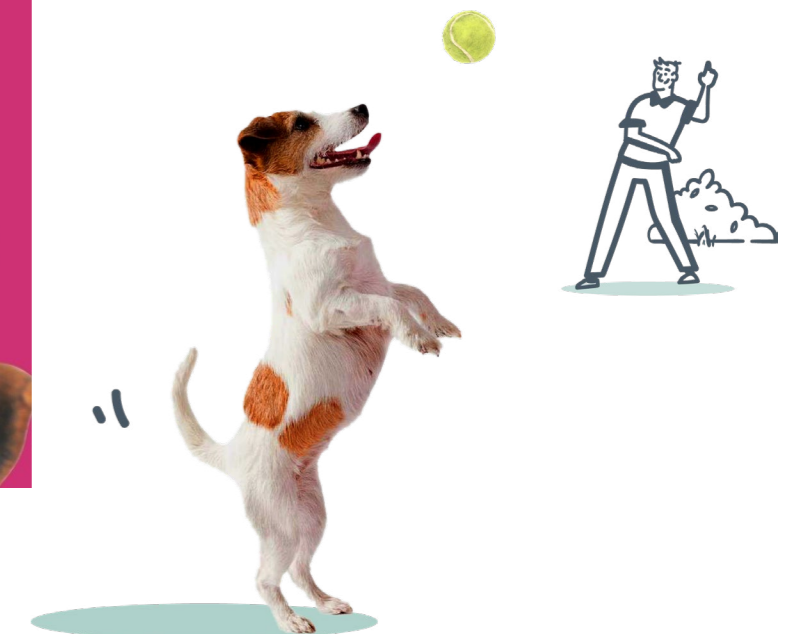
**5,957**

No. of hours given by all volunteers:

**11,760**



*Rosie's Trust is so grateful to all the volunteers across NI who respond to our calls!*



### So many fundraisers to mention this year!

We are indebted to all the wonderful people around Northern Ireland who supported our work during the year – there are simply too many of them to mention in these short pages. However, we have shouted out to them across our social media on every possible occasion! A full list is provided on page 37.

They include the indefatigable Debbie Thompson, Ladies Captain of Shandon Park Golf Club, who

chose us as her Charity of the Year. She had no end of wonderful fundraising ideas in aid of Rosie's Trust, from quiz nights to raffles and tray bakes.

As highlighted in these photos, Rosie's Trust supporters are an imaginative bunch, holding a wide range of events in aid of Rosie's Trust, from coffee mornings to dog agility competitions to marathon running!

*Our heartfelt thanks to Debbie Thompson, Ladies Captain of Shandon Park Golf Club, who undertook several fantastic fundraising events for Rosie's Trust during the year.*



# HIGHLIGHTS OF THE YEAR CONTINUED...



## Four of the amazing Rosie's Runners relay team

who took on the challenge of the Belfast City Marathon Team Relay! (L-R) Nuala Muldoon (Fundraising Lead with Rosie's Trust), David Graham, Emma Macpherson, Colin Rodgers and John MacPherson. Fionnuala Cox also ran with the team.

The team at the Clare Vet Clinic in Ballyclare generously (and energetically!) ran in the Belfast City Marathon in aid of Rosie's Trust. Watch their interview with the BBC as they geared up for the challenge:

**Click to watch:**  
Clare Vet Group take on the Belfast City Marathon for Rosie's Trust



*Some coffee!*  
The fantastic team at Belfast City Sightseeing who raised an incredible £1,000 at a coffee morning in aid of Rosie's Trust!

## Huge thanks to the staff of Harbinson Mulholland for their kind donation.

Patrick Leonard, Partner at HM Chartered Accountants, is pictured here presenting Ruth Pinkerton, Rosie's Trust volunteer, with their most generous cheque!



## Hastings Hotels kindly allowed us to hold some 20 raffles over Christmas/New Year at their Party and Tribute nights.

These were a huge success thanks, above all, to our volunteers who shook the tins on our behalf. Pictured here are Robyn McMurray (Communications and Marketing Lead with Rosie's Trust), Ann McGrady and Donna Morton.

# HIGHLIGHTS OF THE YEAR CONTINUED...



*Huge thanks to our volunteer Jonathan Hoey who held a fundraising night at Bangor Golf Club for Rosie's Trust and the MND Association in October. He went on to do a 430 mile road cycle around the Atlas Mountains in Morocco. He is pictured here at Tizi-n-Tazazert Pass – 2300 metres above sea level – definitely not for the faint hearted!*



*We had a great turnout for our first Rosie's Ramble, which we held during Volunteers' Week. Dogs took their owners 3km along the Bangor coastal path.*



*Sharon Howe, Caroline Forsythe, Linda Storey, Debbie McMurran, Rebecca Rogan, and Lorraine Nesbitt*

were just some of the many wonderful volunteers who gave their time over Christmas/ New Year to hold raffles for Rosie's Trust at the Europa and Stormont Hotels.



*And all the walkers got to enjoy the delicious Rosie's Trust cake that was made to thank all our volunteers for their endless commitment to our beneficiaries and pets!*

# HIGHLIGHTS OF THE YEAR CONTINUED...

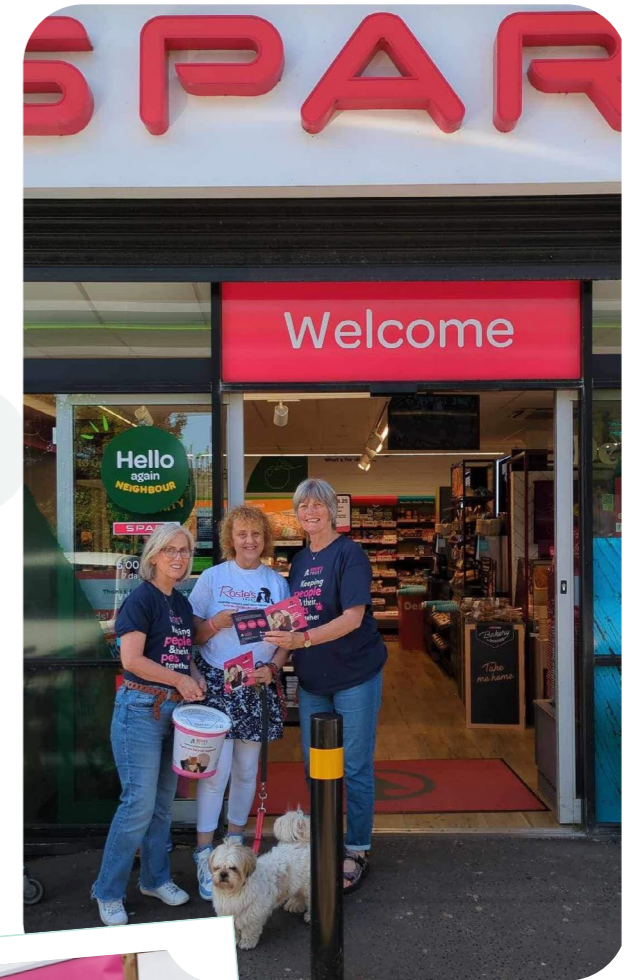


We are so grateful to all the shops that hold collection tins for us. Kimberly Newell, of County Hardware in Donaghadee, has continued to support us this year. She is pictured here with husband Thomas and fur babies Candy Cane and Tia Maria.



Attagirls! Well done to Debbie and Mel Wilkinson who walked 100k with their wee Mabel to raise funds for Rosie's Trust!

Our fabulous volunteers Clare Cowan, Gabi Kerr, Lynda Crozier and wee Harvey did a collection for Rosie's Trust at Torgrange Spar in August.



Many thanks to Barbara Wilson, Bangor Branch Manager, who presented a cheque from John Gray and Co to our Trustee Joyce Savage.

We are using these funds to develop a 'memorial wall' on our website. When a pet passes, people will be able to upload a photo and/or message of condolence and make a donation to us in lieu of a card.



Veteran volunteers Olivia Crookes (left - with Mack), Lynda and Peter Crozier (right - with Jack) were pleased to receive a cheque from Power NI's Brighter Communities Fund presented by Barry Rogan, Marketing Co-ordinator (second from left).



# HIGHLIGHTS OF THE YEAR CONTINUED...

*The true spirit of Christmas! Many thanks to the team at the Integrated Education Fund for having a collection in aid of Rosie's Trust instead of a Secret Santa!*



*A truly magical fundraising event was held at Stormont in November. 'Songs of Love and Hope' was organised by the Lindsay Chorale, who were joined by the Priests and MC Julian Simmons. Lisa McGee and Ibe Sesay also spoke at the event. Photo courtesy of Rachel Cooke Photography*



*Sealed with a ... paw print!*  
For Valentine's Day small business First Impression hosted a special 'puppy love' event and raised funds for Rosie's Trust.



*Together with other charities in Northern Ireland, Rosie's Trust took the opportunity during Will to Give Week to ask our supporters to continue their kindness by leaving a gift in their Will.*

# HIGHLIGHTS OF THE YEAR CONTINUED...

## Increasing our engagement with communities around Northern Ireland

Thanks again to our wonderful volunteers, we have been able to set up stalls at community events all around Northern Ireland and to present to community groups as and when requested.

We are indebted to our Volunteer Ambassadors who made this possible. Previously, these events were undertaken by a small team of staff who were necessarily limited in the number they could attend.

We show here just some of the many Rosie's Trust stalls that were mounted for a wide range of events across Northern Ireland, including community presentations.



*Molly Finlay, Volunteer Support Officer, at the Charity Jobs NI Careers and Volunteer Fair.*



*Volunteers Denise Davies and Lynda Crozier enjoyed some festive fun at the Dog's Trust's Christmas Fair in Ballymena.*



*Staffing the stall at the Lindsay Chorale's 'Songs of Love and Hope' were (l-r) Nicola Brown, Susan McKibbin, Anne Baker, Catriona Mac Arthur, Lorraine Nesbitt and Robyn McMurray.*



*Comber and District USA Group were one of many groups that were introduced to Rosie's Trust this year.*

Karen Marshall, the Committee Chair, is pictured here with Gabi Kerr, our Volunteer Ambassador, who takes wee Harvey with her whenever and wherever she can!



*One of the more majestic visitors to our stall at 'Barket, the Market for Pets and their People', in Antrim in January!*

# HIGHLIGHTS OF THE YEAR CONTINUED...

## Time out for our wonderful volunteers!

Given the many hours that our volunteers give not only to supporting our beneficiaries and their companion pets, but also to staffing stalls, fundraising and giving presentations to community groups,

the least we can do is buy them a cuppa! Thanks to the Halifax Foundation we were able to organise a few catch ups over the year. We show a selection of them enjoying some well-earned time out.

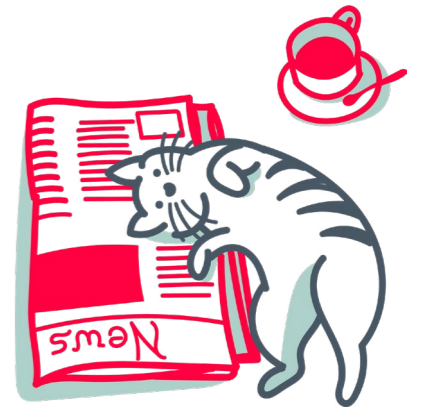


*Thanks to support from the Halifax Foundation, we were able to arrange meet ups for the volunteers in all the different regions where we work.*

Team meet-ups are an important part of the Rosie's Trust volunteer journey; they're an opportunity for volunteers to get to know the other members of their team, share experiences and provide support to each other. Pictured here are Team Amber: Russell Scott, Jane Campbell, Ruth Pinkerton and Debbie McMurrin who got together for a well-deserved cuppa!



*Team Honey get to sit down at last! (L-R) Fiona Coulter, Joan Curren, Laura Hamilton, Lynda Crozier, Beatrice Major and Rosi Armstrong.*



## Communications reaching new audiences across Northern Ireland

Our communications and messaging – through all forms of media – improved significantly during the year. We were very pleased to attract the

attention of the mainstream broadcasting and print media, a selection of which is provided here.



*Laura Quinn, our very compassionate Development Officer,*

spoke to BBC Radio Ulster's William Crawley about how we support our beneficiaries in dealing with pet bereavement.

### Click to listen:

Is the loss of a pet comparable with the death of a family member? Is it ok to grieve the passing of a pet?

# HIGHLIGHTS OF THE YEAR CONTINUED...

22 | Life

## 'We know that volunteering changes lives'

Continued from previous page

invited an isolated older person from the community to spend Christmas Day with us, so sharing Christmas just comes naturally to me and has become special, she says.

"During the first weekend in December, I got involved with Neighbours in Need, which was set up by my mum and creates over a thousand Christmas food hampers for people in Belfast.

"Then, on Christmas Day, along with my parents and the help of other volunteers, we cook dinner and serve it in the church.

"The prep starts the day before – cutting and peeling veg and decorating the hall – then I'll help serve the food with my mum.

"In our first year, there were around 15 of us and last year there was around 50. We expect even more to be involved this year.

"Christmas is a difficult time for some people for many reasons, so I decided to offer up my time to help make it more bearable. I want to be there for those who don't want to spend Christmas Day alone.

Jessica says that along with volunteering every Christmas, and throughout the year, she also likes to spend time at church.

"It underscores the true meaning of Christmas and the message of 'presence over presents', she says.

"There is a real sense of community and passion in the Mission across December and it's something I'm incredibly proud to be part of. Last Christmas, myself, a young child and three older men sat and had tea and a juice talking nonsense on Christmas Day. There we were.



bring joy and but also to try "I've found small ways, meaningful. "It's easy to bustle of Christmas others help chance to who might Denise? Now, agreeing Chris She was at other t "We often volunteer is a woman society," But w ing it be voluntee "As it voluntee we really need "Over Christmas, we think about new houses or healthy habits we'll adopt in the new year, so we're hoping that volunteering could be top of that list this year. The mental and physical benefits of volunteering are proven. "It can help you feel more active, more con-



Betty the cat particularly enjoyed reading this article about Rosie's Trust!

County Down Spectator • Thursday, December 10, 2024

13

## Saintfield choir raises money for charity at Stormont event



At the event in Stormont were Rosie's Trust's Robyn McMurray and volunteers Susan McKibbin, Nicola Brown and Anne Baker, along with ambassador Lisa McGee, host Julian Simmons and the chair of Rosie's Trust, Aileen Martin.

ambassadors of the charity trust, which is due to 10th anniversary, ensures and their pets if they are a terminal illness. raised sent directly to beneficiaries and their aged age and end-of-life days a year.

The chair of Rosie's Trust, and The Lindsay Choral member, Aileen Martin, said: "Thank you to our guests, performers and ambassadors for a truly magical evening hosted by Nick Mathison MLA in the majestic Great Hall of Parliament Buildings.

"We are so grateful for everyone's generous support of Rosie's Trust. Our charity provides a lifeline to some of the most vulnerable people in our community and our work would not be possible without this kindness and generosity.

"The festive season can be a particularly challenging time for many people, but through the music, talent and friendship of The Lindsay Choral, we hope to bring some joy at this time of year."

County Down Spectator 19 December 2024 and Down Recorder 19 December 2024

## 'Supporting people and pets is what makes us so unique'

Sophie Clarke reports on Rosie's Trust, which helps care for people's pets in their homes when they are struggling to do so due to ill health, older age or other conditions



CHARITY which provides support for pet owners struggling to care for their animals, whether through age or disability, injury or illness, will celebrate its 10th anniversary this year.

Rosie's Trust was founded in 2015 by founder Lisa McGee, a former member of the Northern Ireland Assembly, who has since been diagnosed with a terminal illness.

"I thought I was volunteering with Marie Curie and while she was there, she would sit there and talk to the people who were worried or stressed about a pet at home," explains Jayne McKeown, Rosie's Trust's operations manager.

"She was introduced to a young man called Michael, who was receiving palliative care for terminal cancer.

"She had a big black Labrador called Finn who he was really attached to, so we thought about starting walking him on her behalf.

"She always says that Finn and Michael were her best beneficiaries – which is what we call our service users."

As a result, through starting working with organisations including Marie Curie, Macmillan Cancer Support, Age NI and health and social care trusts to fund it there was a need for a service which would help support both people and their pets.

"Through it, though, it's important to also recognise that there was nothing like that for it in Northern Ireland," says Jayne.

"So, she set up Rosie's Trust, which is named after her own golden retriever, Rosie.

Since its establishment, Rosie's Trust has worked with an increasing number of individuals and their four-legged friends. The charity currently supports 53 beneficiaries and 61 pets.

"What we do is really unique," says Jayne. "We do dog walks, vet visits and grooming visits but we also offer short-term fostering if the beneficiary needs to go into hospital or receive hospice care.

"There's a lot of beneficiaries who need to go for cancer treatment but will refuse it because there's no-one to look after their pet, so it provides that extra reassurance."

The charity also provides a check-in service and works closely with social workers and healthcare services to ensure beneficiaries are receiving



## Senior volunteer proves age is just a number

By spectatormagazine - March 15, 2025



Deery Girls writer Lisa McGee is a Rosie's Trust ambassador

Irish News, 1 January 2025

## Social and digital media following continues to increase

	April 2024	March 2025	New Followers
Facebook	8,453	9,041	+588
Instagram	996	1,160	+164
X	760	736	-24 <sup>1</sup>
LinkedIn	152	250	+98
Mailing List	691	761	+70
Website	850 active users	1.4k active users	+550

1. This decrease reflects the overall fall in users of X. Rosie's Trust will be moving to Bluesky in due course.

We published two regular newsletters during the year: one specifically for our volunteers, and the other for our supporters.

## SIGN UP TO OUR NEWSLETTER

And be the first to hear all our pawsome news!



We were delighted to assist Volunteer Now in the filming of a video for their campaign to show that age is no barrier to volunteering.

We introduced them to Niamh Nixon our youngest volunteer, aged 20, and Beatrice Major, aged 80, who has been with Rosie's Trust for seven years.



# THANK YOU TO ALL OUR WONDERFUL VOLUNTEERS!



Active Volunteers – 1 April 2024 to 31 March 2025	Role 1	Role 2	Role 3	Role 4	Role 5
Adrienne Perry	Canine Support				
Aileen Martin	Trustee				
Aisling Fitzgerald	Canine Support				
Alex Elliot	Canine Support				
Alison McIlroy	Canine Support	Foster			
Allen Thurston	Canine Support				
Andy Gorringe	Canine Support				
Ann Payne	Canine Support				
Ann Quigley	Canine Support				
Anne Baker	Fundraiser	Ambassador	Canine Support		
Anne Finlay	Ambassador	Canine Support			
Anne Reid	Canine Support				
Anne Tweed	Fundraiser	Phone Support	Canine Support		
Annie Watson	Canine Support				
Antoinette Hagan	Canine Support	Foster			
Arlene McEvoy	Canine Support				
Asia Haraburda	Canine Support				
Beatrice Major	Canine Support				

Active Volunteers – 1 April 2024 to 31 March 2025	Role 1	Role 2	Role 3	Role 4	Role 5
Beatriz Garcia-Torresano	Canine Support				
Benjamin Williamson	Canine Support				
Bernie Smyth	Canine Support				
Beverly Huddleston	Foster	Canine Support			
Brigitte Bartholome	Canine Support				
Carol Noble	Canine Support				
Caroline Forsyth	Fundraiser	Ambassador	Canine Support		
Carolyn McGinnell	Canine Support				
Carolyn Tweed	Canine Support				
Catherine Kelly	Canine Support	Foster			
Catherine McConville	Foster				
Cathy McBride	Canine Support				
Cathy Wilcock	Canine Support				
Chris Idzikowska	Foster				
Chris McGarry	Canine Support				
Cilla Sherman	Phone Support	Canine Support			
Claire Guyer	Canine Support				
Claire McKeown	Canine Support				
Clare Cowan	Fundraiser	Canine Support			
Clare Jess	Trustee				
Colette Roe	Canine Support				
Courtney Rea	Canine Support				
Danielle Ingram	Canine Support				
Dawn Steveson	Canine Support				
Dean Lee	Canine Support				
Debbie Millar	Canine Support				
Deborah Frost	Canine Support				
Deborah McMurran	Canine Support				
Deidre Moody	Canine Support				
Denise Davies	Ambassador	Canine Support			
Denise Durnien	Canine Support				
Diane Dickson	Foster				
Diane Forsythe	Canine Support				
Diane Torrens	Canine Support				
Edna Wills	Canine Support	Foster			
Ellen Ferris	Canine Support				

# THANK YOU TO ALL OUR WONDERFUL VOLUNTEERS!

Active Volunteers – 1 April 2024 to 31 March 2025	Role 1	Role 2	Role 3	Role 4	Role 5
Emer Rice	Trustee				
Emily Graham	Fundraiser	Ambassador	Canine Support		
Emma Clarke	Canine Support				
Emma White	Canine Support				
Emma-Kate McClay	Canine Support				
Erin Galbraith	Canine Support				
Evie Gardner	Canine Support				
Felicia Chan	Canine Support				
Fiona Coulter	Canine Support				
Fiona Hollowaystone	Trustee				
Fiona Hutchinson	Canine Support				
Fionnuala Fearon	Canine Support				
Frances Steele	Canine Support				
Gail Spiers	Canine Support				
Garielle (Gabi) Kerr	Fundraiser	Ambassador	Phone Support		
Gary Craig	Canine Support				
Gayle Lavery	Trustee				
Geoff Aiken	Canine Support				
Geoffrey Parks	Canine Support	Foster			
Geraldine McKinley	Canine Support	Foster			
Gill Williams	Canine Support				
Gillian Mills	Canine Support				
Glenda Burns	Canine Support				
Grianne Evans	Transport	Admin			
Guy Irwin Smith	Canine Support				
Harry Morrow	Foster				
Hazel Cameron	Canine Support				
Helen Kerr	Canine Support				
Helen McLaughlin	Canine Support				
Helene Sloan	Canine Support				
Hilary Idzikowska	Foster	Dog Listener			
Hilary Neil	Canine Support				
Ian Brown	Canine Support				
Imelda McConnell	Canine Support				
Ivan Noble	Canine Support				
Jackie Morgan	Foster	Dog Listener			

Active Volunteers – 1 April 2024 to 31 March 2025	Role 1	Role 2	Role 3	Role 4	Role 5
Jane Bell	Canine Support				
Jane Campbell	Canine Support				
Janet Armstrong	Co-ordinator	Phone Support			
Janet Neil	Canine Support				
Janet White	Canine Support				
Janice McBriar	Canine Support				
Jen McVeigh	Canine Support				
Jill Aiken	Foster	Canine Support			
Jill Hawthorne	Trustee				
Jill Kerry	Foster				
Jill McLean	Transport				
Jill Truesdale	Canine Support	Foster			
Joan Curran	Canine Support				
Joanna Rea	Canine Support				
Joanne Parks	Phone Support	Ambassador	Canine Support	Foster	
Joesphine Mallon	Trustee				
John Binns	Canine Support				
John Cassells	Canine Support				
John McGarrigle	Canine Support	Admin	Foster		
Johnathan Hoey	Canine Support				
Jo-Jo McLaughlin	Canine Support				
Jonathan Twinem	Canine Support				
Joyce Savage	Trustee				
Judith McCormack	Fundraiser	Canine Support			
Judith Ragg	Canine Support				
Judith Watt	Foster	Canine Support			
Julia Heggarty	Canine Support				
June Carberry	Canine Support				
Justine McIntyre	Canine Support				
Karen Boutros	Fundraiser	Transport	Canine Support		
Karen Smyth	Canine Support				
Karen Steele	Canine Support				
Karla Gordon	Canine Support				
Kate Daly	Canine Support				
Kate McNeill	Canine Support				
Keith Scott	Canine Support				

# THANK YOU TO ALL OUR WONDERFUL VOLUNTEERS!

Active Volunteers – 1 April 2024 to 31 March 2025	Role 1	Role 2	Role 3	Role 4	Role 5
Kerrie Flack	Canine Support				
Kim Hamilton	Fundraiser	Ambassador	Canine Support		
Kimberley Newell	Canine Support				
Kirsty Davidson-O'Neill	Canine Support				
Kirsty Shields	Canine Support				
Kristina Clyde	Canine Support				
Lara Carlin	Canine Support				
Laragh O'Grady	Canine Support				
Laura Hamilton	Canine Support				
Liana Wylie	Canine Support				
Lianne Mullholland	Canine Support				
Linda Brown	Canine Support				
Linda Marks	Transport	Canine Support			
Linda McDonald	Canine Support	Foster			
Lisa Clydesdale	Canine Support				
Lisa Curtis	Canine Support				
Lisa McEaney	Canine Support				
Lisa Mehigan	Canine Support				
Liz Brown	Canine Support				
Lorraine Majury	Canine Support				
Lorraine Nesbitt	Fundraiser	Phone Support	Ambassador	Canine Support	
Louise Heatley	Trustee				
Lucia Flanagan	Canine Support				
Lyn Cummings	Canine Support				
Lynda Crozier	Fundraiser	Co-ordinator	Transport	Ambassador	Canine Support
Lynda Graham	Foster				
Lynn Magill	Canine Support				
Lynn Watson	Foster				
Lynne Hamilton	Ambassador	Canine Support			
Lynsay Wright	Canine Support				
Lynsey Grant	Canine Support	Foster			
Madhavi Pasapula	Canine Support				
Magdalena Mielcarek	Canine Support				
Maggie Kelly	Canine Support				
Maia Magee	Foster				
Malcom McKibbin	Foster				

Active Volunteers – 1 April 2024 to 31 March 2025	Role 1	Role 2	Role 3	Role 4	Role 5
Margaret Fulford	Canine Support				
Marie Caffola	Canine Support				
Mark Lamont	Canine Support				
Mark McConville	Foster				
Mary McNeilly	Ambassador				
Mary O'Hara	Canine Support				
Matthew McBride	Canine Support				
Maura Mason	Foster				
Maureen Brown	Canine Support				
Maureen McCartney	Canine Support				
Melanie Patton	Canine Support				
Michael Kelly	Canine Support				
Michael McDowell	Canine Support				
Monique Kritzinger	Canine Support				
Morris Cameron	Canine Support				
Muire Creed	Canine Support				
Muriel Gillespie	Canine Support				
Nancy Henry	Foster				
Naomi Holmans	Canine Support				
Natasha Walker	Canine Support				
Neil Baird	Canine Support				
Neil Currie	Canine Support				
Niall McInerney	Canine Support				
Niamh Nixon	Canine Support				
Nicola Brown	Fundraiser	Ambassador	Canine Support		
Noeleen Brennan	Canine Support				
Norman Totten	Canine Support				
Olivia Crookes	Fundraiser	Phone Support	Ambassador	Canine Support	
Oonagh Lynch	Canine Support				
Orla McGarry	Canine Support				
Patricia McCann	Canine Support				
Paul Hart	Foster				
Paula Sawyer	Canine Support				
Pauline Hughes	Canine Support				
Peter Crozier	Canine Support				
Rachel Coulter	Canine Support				

# THANK YOU TO ALL OUR WONDERFUL VOLUNTEERS!

Active Volunteers – 1 April 2024 to 31 March 2025	Role 1	Role 2	Role 3	Role 4	Role 5
Rachel McGuinness-Brown	Canine Support				
Rachel Miskimmin	Fundraiser	Canine Support			
Rebecca Neilson	Canine Support				
Rhiannon Jones	Canine Support				
Richard Gapper	Canine Support				
Richard Graham	Foster				
Rita Tucker	Canine Support				
Robin Stevenson	Canine Support				
Rosaleen Mullan	Canine Support				
Rosi Armstrong	Canine Support				
Russell Scott	Canine Support				
Ruth Pinkerton	Fundraiser	Co-ordinator	Phone Support	Ambassador	Canine Support
Sandra Armstrong	Canine Support				
Sandra Starr	Canine Support				
Sara Wilson	Canine Support				
Sharon Hart	Foster				
Sharon Magorrian	Canine Support				
Sharon McAleenan	Canine Support				
Simon Simpson	Canine Support				
Sophie Stephenson	Canine Support	Ambassador			
Stefanie Morrow	Transport	Foster			
Stephen Aiken	Canine Support				
Susan Mckibbin	Fundraiser	Ambassador	Canine Support		
Susan Piggot	Canine Support				
Susan Winch	Foster				
Suzanne O'Hara	Canine Support				
Suzie Ferris	Foster				
Terri Mayne	Canine Support				
Thomas Duncan	Canine Support				
Tim Leonard	Trustee				
Tracey Rylance	Canine Support				
Trina O'Callaghan	Ambassador	Canine Support			
Trish Cameron	Canine Support				
Wallace Henry	Foster				
Wayne Watson	Foster				

# AND THANK YOU AGAIN TO OUR MOST GENEROUS SUPPORTERS!

- AE Trust
- Ann Ryland / SirJules Thorn Charitable Trust
- Ardbarron Trust
- Ballyclare Primary School
- Belfast City Sightseeing
- Black Santa
- Buzz Warner
- City Vets
- Claire Vets
- County Hardware
- DWF NI
- Dundonald Women's Institute
- Enkalon
- Executive Golf and Leisure
- Glandore Dog Training Club
- Halifax Foundation
- Harbinson Mulholland
- Irish Whiskey Auctions
- John Atcheson Foundation
- John Gray and Co
- John McGrillan birthday fundraiser on Facebook
- Killyleagh Shop
- Kingsbridge Foundation, part of the Kingsbridge Healthcare Group
- Lindsay Chorale
- Macmillan Cancer Support
- Magheramourne Dancers
- McLaughlin Harvey
- MuchLoved
- NorthernTrust – Peer Support Funding
- PhotoLease
- PowerNI
- Shandon Park Golf Club
- Spar Community Cashback
- Suresh Tharma
- The National Lottery Community Fund
- Torgrange Collection
- Ulster Garden Villages



## FINANCIAL POSITION AND RESERVES

At 31st March 2025 Rosie's Trust held restricted reserves of £14,976 and unrestricted reserves of £112,738. Rosie's Trust aims to hold at least one month's running costs on reserves (approximately £55,000) to deal with any unforeseen circumstances including, but not limited to the winding up of the charity in the event of being unable to raise any further substantial funding to allow the payment of staff salaries and running costs. The Trustees and operations staff will consider on a regular basis the levels of funding that it holds and how this funding can be used to benefit the charity and the services that it provides and to best meet the needs of its beneficiaries and volunteers.

In the 2024-25 financial year the majority of core costs including salaries were covered from a grant from National Lottery Community Fund and other restricted funds to cover the costs associated with particular activities or projects. We also received a level of unrestricted funding, mainly from donations, which was directed to other costs as required.

We were very fortunate to receive a three-year grant from the National Lottery Community Fund in April 2023. This followed a five-year grant generously provided by the National Lottery Community Fund in 2018. We would like to take this opportunity to once again thank the National Lottery Community Fund for their support for making our work possible.

## STATEMENT OF TRUSTEES' RESPONSIBILITIES

The Trustees are responsible for preparing the Trustees Annual Report and the financial statements in accordance with applicable law and United Kingdom Accounting Standards (United Kingdom Generally Accepted Accounting Practice).

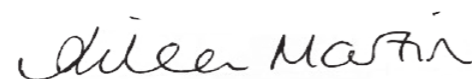
The law applicable to charities in Northern Ireland requires the trustees to prepare financial statements for each financial year which give a true and fair view of the state of affairs of the charity and of the incoming resources and application of resources of the charity for that period. In preparing these financial statements the Trustees are required to:

- select suitable accounting policies and then apply them consistently;
- observe the methods and principles in the Charities SORP;
- make judgments and estimates that are reasonable and prudent;
- state whether applicable UK Accounting Standards have been followed, subject to any material departures disclosed and explained in the financial statements;
- prepare the financial statements on the going concern basis unless it is inappropriate to presume that the company will continue in operation.

The Trustees are responsible for keeping proper accounting records that disclose with reasonable accuracy at any time the financial position of the charity and enable them to ensure that the financial statements comply with the Charities Act (Northern Ireland) 2008. They are also responsible for safeguarding the assets of the charity and hence for taking reasonable steps for the prevention and detection of fraud and other irregularities.

Each of the trustees has confirmed that there is no information of which they are aware which is relevant to the examination, but of which the examiner is unaware. They have further confirmed that they have taken appropriate steps to identify such relevant information and to establish that the examiner is aware of such information.

**By order of the Board of Trustees**



Aileen Martin (Chair)



Karen Steele (Treasurer)

3 September 2025

## INDEPENDENT EXAMINER'S REPORT TO THE CHARITY TRUSTEES OF ROSIE'S TRUST

I report to the charity trustees on my examination of the accounts of the charity for the year ended 31 March 2025, which are set out on the accounts pages.

### Respective responsibilities of charity trustees and examiner

As the charity trustees you are responsible for the preparation of the accounts in accordance with the requirements of the Charities Act (Northern Ireland) 2008.

It is my responsibility to:

- examine the accounts under section 65 of the Charities Act (Northern Ireland) 2008;
- follow the procedures laid down in the general Directions given by the Charity Commission for Northern Ireland under section 65(9)(b) of the Charities Act; and
- state whether particular matters have come to my attention.

### Basis of independent examiner's report

I have examined your charity accounts as required under section 65 of the Charities Act and my examination was carried out in accordance with the general Directions given by the Charity Commission for Northern Ireland under section 65(9)(b) of the Charities Act.

My examination included a review of the accounting records kept by the charity and a comparison of the accounts presented with those records. It also includes consideration of any unusual items or disclosures in the accounts, and seeking explanations from you as charity trustees concerning any such matters.

My role is to state whether any material matters have come to my attention giving me cause to believe:

1. That accounting records were not kept in accordance with section 63 of the Charities Act
2. That the accounts do not accord with those accounting records
3. That the accounts do not comply with the accounting requirements of the Charities Act
4. That there is further information needed for a proper understanding of the accounts to be reached.

### Independent examiner's statement

I have completed my examination and have no concerns in respect of the matters (1) to (4) listed above and, in connection with following the Directions of the Charity Commission for Northern Ireland, I have found no matters that require drawing to your attention.

Richard McClay FCA  
For and on behalf of McCreery Turkington Stockman LTD

1 Lanyon Quay  
Belfast  
BT1 3LG

17 August 2025

# STATEMENT OF FINANCIAL ACTIVITIES

	Unrestricted Funds	Restricted Funds	Year Total	Year Total
	2025	2025	2025	2024
	£	£	£	£
<b>Income from:</b>				
<i>Income from charitable activities</i>	119,190	183,683	302,873	291,184
<b>Total income</b>	119,190	183,683	302,873	291,184
<b>Expenditure on:</b>				
<i>Charitable activities</i>	(96,446)	(202,555)	(299,001)	(204,004)
<i>Raising funds</i>	(3,678)	-	(3,678)	(1,696)
<b>Total expenditure</b>	(100,124)	(202,555)	(302,679)	(205,700)
<b>Net income before transfers</b>	19,066	(18,872)	194	85,484
<b>Transfer between funds</b>	(3,432)	3,432	-	-
<b>Net incoming resources</b>	15,634	(15,440)	194	85,484
<b>Fund balances brought forward</b>	97,106	30,416	127,522	42,038
<b>Fund balances carried forward</b>	112,740	14,976	127,716	127,522

All of the above results are derived from continuing activities. All gains and losses recognised in the year are included above. The notes form an integral part of these financial statements.

# BALANCE SHEET

		2025	2024
	Notes	£	£
<b>Fixed assets</b>			
<i>Tangible assets</i>	4	15,821	21,881
<b>Current assets</b>			
<i>Debtors</i>		3,263	2,016
<i>Cash at bank and in hand</i>		174,573	139,963
		177,836	141,979
<b>Creditors: amounts falling due within one year</b>		(65,941)	(36,338)
<b>Net current assets</b>		111,895	105,641
<b>Net assets</b>		127,716	127,522
<b>Capital and reserves</b>			
<i>Unrestricted funds</i>	5	112,740	97,106
<i>Restricted funds</i>	5	14,976	30,416
<b>General funds</b>		127,716	127,522

The notes form an integral part of these financial statements.

## Signed for and on behalf of the Board of Trustees

Aileen Martin  CHAIR

Karen Steele  TREASURER

# NOTES TO THE FINANCIAL STATEMENTS

## 1. Accounting policies

### 1.1. Basis of preparation

The charity constitutes a public benefit entity as defined by FRS 102.

The accounts have been prepared in accordance with the accounting policies to the accounts and comply with the charity's governing document, the Charities Act (Northern Ireland) 2008 and "Accounting and Reporting by Charities: Statement of Recommended Practice applicable to charities preparing their accounts in accordance with the Financial Reporting Standard applicable in the UK and Republic of Ireland published in October 2019"

The financial statements are prepared on a going concern basis under the historical cost convention, modified to include certain items at fair value. The financial statements are prepared in sterling which is the functional currency of the charity.

The significant accounting policies applied in the preparation of these financial statements are set out below. These policies have been consistently applied to all years presented unless otherwise stated.

### 1.2. Tangible fixed assets and depreciation

Depreciation is provided at rates calculated to write off the cost less residual value of each asset over its expected useful life, as follows:

Straight Line	
<i>Equipment, furniture and fittings</i>	25%
<i>Van</i>	20%

### 1.3. Fund Accounting

Unrestricted income funds are general funds that are available for use at the trustees' discretion in furtherance of the objectives of the charity.

Restricted funds are those donated for use in a particular area for specific purposes, the use of which is restricted to that area or purpose.

### 1.4. Resources

#### Incoming resources

Income includes subscriptions, donations and other cash received and receivable. Donations are recognised where there is entitlement, certainty of receipt and the amount can be measured with sufficient reliability. Investment income is recognised on a receivable basis. Income was attributable to the one principal activity of the company carried on within the United Kingdom and Europe.

## 2. Employees

	Period ended	Year ended
	2025	2024
<b>Number of employees</b>		
<i>The average monthly numbers of employees during the year were:</i>		
<i>Service Delivery</i>	6	4
	2025	2024
<b>Employment costs</b>	£	£
<i>Wages and salaries</i>	208,823	131,575
<i>Social security costs</i>	6,680	6,681
<i>Other pension costs</i>	9,861	6,579
	225,364	144,835

There were no employees earning over £60,000 in the year ended 31 March 2025.

Rosie's Trust's work would not have been as extensive as it has been without the dedicated services of our volunteers, as noted in the Trustees' Report.

We are very grateful for their gift of time to the charity.

### 3. Income & Expenditure Account

	Unrestricted	Restricted	Year	Year
	2025	2025	2025	2024
	£	£	£	£
<b>Income</b>				
<i>General income, donations etc</i>	119,190	183,683	302,873	291,184
<b>Operating expenses</b>				
<i>Wages and salaries</i>	58,569	156,934	215,503	138,256
<i>Staff pension costs</i>	2,702	7,159	9,861	6,579
<i>Rent</i>	-	1,338	1,338	480
<i>Sundry fundraising costs</i>	3,678	-	3,678	1,696
<i>Direct expenditure on beneficiary support</i>	3,239	462	3,701	4,716
<i>Insurance</i>	-	2,286	2,286	2,504
<i>Adverts, postage and stationery</i>	31	1,321	1,352	674
<i>Promotional materials</i>	13,199	15,000	28,199	8,439
<i>Telephone and IT</i>	5,603	705	6,308	3,428
<i>Travelling and motor</i>	776	7,437	8,213	8,296
<i>Consultancy fees</i>	8,420	1,000	9,420	21,955
<i>Training</i>	-	2,436	2,436	180
<i>General expenses</i>	1,020	2,100	3,120	6,502
<i>Subscriptions</i>	1,204	-	1,204	471
<i>Depreciation</i>	1,683	4,377	6,060	2,024
<i>Profits/losses on assets</i>	-	-	-	500
	100,124	202,555	302,679	205,700
<b>(Deficit) / Surplus for year</b>				
<i>Normal activities</i>	19,066	18,872	194	85,484
<i>Transfer between funds</i>	(3,432)	3,432		
	15,634	15,440	194	85,484

### 4. Tangible fixed assets

	General Assets	Restricted Fund Assets	Total
	£	£	£
<b>Cost</b>			
<i>At 1 April 2024</i>	5,260	24,495	29,755
<i>Disposals</i>	-	(4,519)	(4,519)
<i>At 31 March 2025</i>	5,260	19,976	25,236
<b>Depreciation</b>			
<i>At 1 April 2024</i>	848	7,026	7,874
<i>Charge for the year</i>	1,683	4,377	6,060
<i>Disposals</i>	-	(4,519)	(4,519)
<i>At 31 March 2025</i>	2,531	6,884	9,415
<b>Net book values</b>			
<i>At 31 March 2025</i>	2,729	13,092	15,821
<i>At 31 March 2024</i>	4,412	17,469	21,881

## 5. Statement of funds

	Balance 1 April 2024	Incoming Resources	Outgoing Resources	Transfers	Balance 31 March 2025
<b>Restricted funds</b>					
<i>Sundry Grants</i>	30,416	12,363	27,803	-	14,976
<i>Dormant Accounts Fund NI</i>	-	45,204	(45,204)	-	-
<i>National Lottery Community Fund</i>	-	126,116	(129,548)	3,432	-
	30,416	183,683	(202,555)	3,432	14,976

Revenue reserves include grants that have preconditions attached. These grants are separated as shown above and relevant expenditure is allocated against them.

Any funds unspent at the end of the year are carried forward if the charity has received them outright, and they are shown as income in the year received. Any funds received that are repayable to the granting body if unspent are shown as income to the extent that expenditure has been incurred and a deferred income liability is included for the amount not yet spent.

## 6. Charity information

The organisation was formed by Trust deed. It is registered with HMRC and The Regulator for Charities in Northern Ireland as a charity. It operates within Northern Ireland and its registered address is The Fountain Centre, 2 Queens Parade, Bangor, BT20 3BJ.

The nature of the entity's operations and a description of the principal activities is included in the Trustees' report.

## 7. Accounts approval

These financial statements were approved by the Board of Trustees on 3 September 2025.



We'd love to talk to you about Rosie's Trust so please call us on **02891 641340** or visit [rosiestrust.org](https://rosiestrust.org) for more information.



Rosie's Trust is registered with the Charity Commission for Northern Ireland NIC102422.

Registered office 2 Queen's Parade, Bangor BT20 3BJ