



Annual Report

and Financial Statements
Year ended 31 March 2024

Charity Registration Number: NIC102422

Generously supported by





Northern Ireland's only charity dedicated to helping cancer patients, the terminally ill and elderly people with mobility issues to hold on to their companion pets at a time when they need them most.

Contents

Message from the Chair	03
About Rosie's Trust	07
Who We Are and What We Do	08
Public Benefit	10
Highlights of the Year 2023 - 2024	11
Thank You To All Our Wonderful Volunteers	22
Financial Position and Reserves	26
Statement of Trustees' Responsibilities	26
Report of the Independent Examiner	27
Statement of Financial Activities	28
Income and Expenditure Account	29
Balance Sheet	30
Notes to the Financial Statements	31

Message from the Chair



The financial year 2023-2024 marked a major turning point in the life of our charity. Thanks to the generosity of our many supporters, we enjoyed significant growth during the period and were able to invest in laying strong foundations for our future sustainability.

Special thanks must go to the Kingsbridge Charitable Foundation and the John Atcheson Trust for their most generous donations. We are also indebted to the many different organisations who awarded us grants during the period, including the Clothworkers Federation, Coop, Danske Bank Employees' Charity Group, Enkalon, Halifax Foundation, Jean Sainsbury Animal Welfare Fund, and the Marchig Animal Welfare Trust.

Most importantly, we extend our heartfelt thanks to the many individuals who raised funds on our behalf. They are the backbone of our charity and rightly take centre stage in the 'Highlights' section on pages 11 to 21.

The generous support from our core funder, the National Lottery Community Fund, has enabled Rosie's Trust to continue to help cancer patients, people receiving end of life care and elderly people with mobility issues to hold on to their companion pets at a time when they need them the most.

In addition to our existing beneficiaries, during the period under review we were able to support 22 new beneficiaries in the four Health and Social Care Trust areas in which we operate, bringing the total number of beneficiaries supported to 64. We also succeeded in recruiting and training 81 additional volunteers, bringing the total to 210.

Investing in our people

Through focused planning and targeted initiatives, I am confident that we have set the stage for ongoing success in the years to come. We have expanded our team of staff, adding new positions to support our evolving goals and to enhance our capabilities. This investment in talent has not only strengthened our current operations but built our capacity for continued growth.

We welcomed two new staff during the period: Aisling Fitzmaurice, a long-standing volunteer with Rosie's Trust, who joined us in April as a Development Officer for the South Eastern and Southern HSC Trust areas. We also engaged the services of another wonderful volunteer, Grainne Evans, as our finance manager for one day a week. Finally, and fortuitously, Nuala Muldoon, our part-time Community Engagement and Fundraising Lead, was able to give another day a week of her time to assume the busy load of Administrative Assistant.

The Board also decided to employ a part-time CEO for three years, as provided for in the National Lottery Community Fund grant award. Previously, we had engaged an interim CEO on a consultancy basis. Dr Catriona Mac Arthur was subsequently employed to provide strategic leadership and direction to our small team.

We also created a number of new roles to enable volunteers to build on their existing skills, competencies and interests. During the period under review, we have created four new roles: Transport Volunteer, Volunteer Administrator, Rosie's Trust Ambassador, and Fundraising Volunteer.

Message from the Chair cont'd...

Another completely new role we created this year was that of Celebrity Ambassador. We were thrilled when Ibe Sesay, an influencer with more than 10,000 followers, agreed to become our first ever Ambassador. A great dog lover, Ibe is the presenter of the Drive programme on Q Radio. His support of Rosie's Trust is helping us raise our profile, particularly among the 25- to 45-year-old age group.



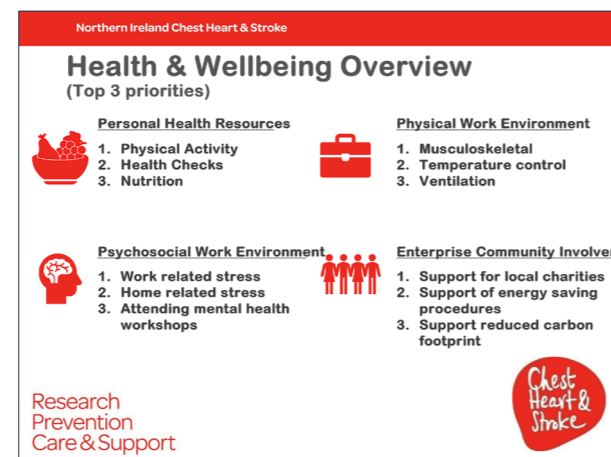
The appointment of Ibe Sesay as our new Celebrity Ambassador caught the media's imagination. He is pictured here with his Maltese poodle pup, Barnie, together with Rosie's Trust beneficiary, Janet Harris with her beloved Rilla, and Jayne McStay, Operations Manager

Our second Celebrity Ambassador to be appointed this year was Lisa McGee, who needs no introduction following the phenomenal success of her 'Derry Girls'; not to mention her many other achievements. Lisa is a great cat lover and, like Ibe, is using her platform to support our work and reach out to new audiences.

We are indebted to so many volunteers - far more than I could list here - that we provide a separate page with the names of each and every one of them with our enormous gratitude. Our charity simply could not operate without our volunteers; they go above and beyond to support some of the most vulnerable members of our community. We are truly blessed to have them in the Rosie's Trust family.



All of us on the Board of Trustees are aware of the emotional demands that working with vulnerable people can make on our staff and volunteers. We were therefore delighted to be accepted on the Chest, Heart and Stroke Association's free Work well, live well programme. This began with a survey of all volunteers and staff to identify their priority concerns (the top three across four different areas are shown in the chart below) and a tailored action plan was then developed to address these.



Best practice governance

Our volunteers do, of course, include my fellow Trustees on the Board of Rosie's Trust. There were a few comings and goings during the period, including my own appointment as Chair of the Board in June. I was about to retire from my position as Commercial Director at Hastings Hotels and was keen to find a new challenge. My love of dogs and my heartfelt desire to help all things cancer related was the motivator to apply for this fantastic role.

We bade farewell to two long-standing Trustees, Fiona Coulter and Joy McGimpsey, who stood down in May and October 2024 respectively. Both had made major contributions to the charity during their tenure, and we will be forever grateful to them for their support.

The Board of Trustees has continued to strive for best practice in governance. During the period we streamlined and developed an enhanced risk register, better aligned to our annual Operational Plan. We also updated our Trust Deed, setting fixed terms of office, numbers of Trustees, and a quorum for all meetings. These changes were needed as the Trust Deed had not been reviewed since Rosie's Trust was first established in January 2015, when it comprised just three Trustees and no staff at all!!

Another major task was the review and development of just under 100 policies and procedures covering a wide range of areas, from safeguarding to health and safety to data protection and social media.



Lisa McGee with beautiful Molly and her proud owner Paul Swan, a beneficiary of Rosie's Trust (at Lisa's left). Pictured with them are Mark Regan, CEO of Kingsbridge Healthcare Group (far left), Dr Martin Shields, Group Medical Director (right), and Aileen Martin (far right).

We developed many new policies in response to identified operational need, such as 'Eligibility criteria for the provision of Rosie's Trust services', 'Process for assisting beneficiaries in need with the payment of vet fees' and a 'Process for addressing breach of volunteer policies and procedures.'

We also updated our Covid-19 guidelines to allow volunteers to enter beneficiaries' homes and enjoy 'normal' (ie pre-pandemic) contact provided the beneficiary is not receiving cancer treatment.

The group tasked with implementing our Business Continuity Plan ran two test exercises during the year, one of which took place out-of-hours. The group's meticulous preparations ensured that both exercises - conducted among all staff, Trustees and volunteers - occurred without incident and confirmed the excellent communications set up between all involved.

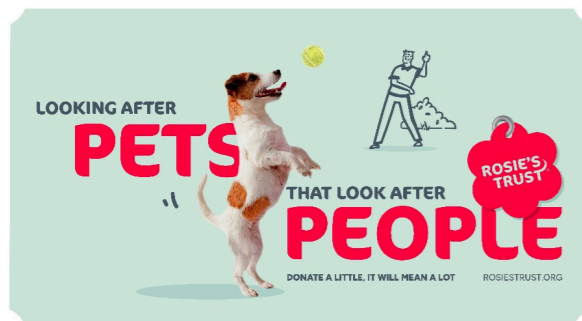
Another important development this year was the introduction of a new online referral form that will enable us to transition over time to third party referrals. We are confident that this will reduce the burden on our small team who spend significant periods of time signposting people who do not meet our eligibility criteria. The referral form still provides for self-referrals but encourages those from third parties (such as a social worker, GP or community/voluntary organisation).

Message from the Chair cont'd...

Improving understanding of our services

I have taken every opportunity throughout the year to meet with representatives of the private, public and third sectors to raise awareness of Rosie's Trust. This has included meeting one to one with the CEOs of Aware, Hospice NI, and Business in the Community. I have also attended various forums throughout the year to spread the word.

The Board and I were pleased to receive ringfenced funding to enable us to engage external support to help us better communicate the vital role Rosie's Trust plays in the community. We started work in March on a rebranding project, which will be launched to mark our 10th birthday in January 2025. The Board is confident that this investment will make a significant return, in terms of improved awareness of Rosie's Trust and increased financial support.



A taste of Rosie's Trust new branding, which is designed to engage with new audiences. It will be launched to mark our 10th anniversary in January 2025.

I am very much looking forward to working with all at Rosie's Trust to lead the charity into a period of growth and expansion in the year ahead, enabling us to keep increasing numbers of people together with their pets during difficult times. I am particularly pleased that we will be able to explore opportunities in 2024-2025 to expand our services to the North-West region, thanks to the generous support of Ulster Garden Villages. With many, many thanks to the volunteers, staff, Trustees and, of course, the National Lottery Community Fund, without whom I would be unable to look to the future of our charity with such optimism.

Aileen Martin
Chair

Information about Rosie's Trust

Charity established under Trust Deed on 20 January, 2015.

Board of Trustees (at the date of approval of the accounts)

Aileen Martin, Chair
Appointed to Board June 2023

Karen Steele, Treasurer
Appointed to Board October 2024

Josephine Mallon, Secretary

Hannah Corbett
Appointed to Board December 2024

Clare Jess
Appointed to Board February 2023

Gail Lavery
Appointed to Board February 2023

Tim Leonard

Joyce Savage

The Trustees who resigned between the commencement date of these financial statements and the approval date are listed below:

Emer Rice
Resigned May 2024

Jill Hawthorne
Resigned August 2024

Louise Heatley
Resigned October 2024

Staff

CEO, **Dr Catriona Mac Arthur** (0.4 FTE)
Operations Manager, **Jayne McStay**
Development Officer, **Laura Quinn**
Development Officer, **Aisling Fitzmaurice**
Volunteer Support Officer, **Molly Finlay**
Marketing and Communications Lead,
Robyn McMurray (0.8 FTE)
Community Engagement and Fundraising Lead,
Nuala Muldoon
Finance Manager, **Grainne Evans** (Consultant - 0.2 FTE)

Contact details

Telephone: 0289 1641340
Email: mail@rosiestrust.org
Postal address: The Fountain Centre, 2 Queen's Parade, Bangor BT20 3BJ

Independent Examiner

James Fulford & Co Ltd
Chartered Accounts
PO Box 152
Newtownards
BT 23 5GW

Bankers

Co-op Bank Ltd
1, Balloon Street
Manchester
M60 4EP

Santander UK plc
Bridle Road
Bootle
Merseyside
L30 4GB

Registration

Charity Commission for Northern Ireland NIC102422

Taxation Status

As a registered charity, Rosie's Trust has claimed exemption from tax.

Who we are and What we do



Rosie's Trust is unique. We are the only charity in Northern Ireland dedicated to helping cancer patients, the terminally ill and older people with a disability hold on to their companion pets at a time when they need them most.

When someone is faced with a cancer diagnosis, disability or terminal illness, their whole world changes. They have so much to worry about, so much to deal with and the one thing they need - especially those living alone - is the emotional support that their companion pet provides.

They are no longer able to provide their dog or cat with the same level of care they once could and their anxiety about the welfare of their beloved companion only serves to compound their distress.

At the most stressful time of their lives, they may be forced to give up their companion pet and, in so doing, experience tremendous loss, isolation and feelings of guilt.

Some people have reported that they considered delaying or even refusing treatment because they had no one to look after their pet.

Rosie's Trust cares for our beneficiaries' companion dogs and/or cats in their homes when they are no longer able to look after them independently.

We provide fostering services when our beneficiaries need to spend a period of time in hospital or in hospice care. Subject always to our beneficiaries' wishes, we also find new homes for their pets when they are no longer able to care for them, including when they die.

Rosie's Trust also offers a pet bereavement service, providing emotional support to beneficiaries when their companion pet predeceases them.

We provide our services free of charge, 365 days of the year. We depend on donations to cover our service costs, and every penny gifted to us is carefully used.

Our services offer peace of mind for our beneficiaries as they know Rosie's Trust will support them in the care of their companion pet for as long as they need us and our resources permit.

Rosie's Trust services not only help to address loneliness and social exclusion in Northern Ireland, but also to promote animal welfare, in accordance with the Welfare of Animals Act (NI) 2011.



Our team of 200+ committed volunteers are the life force of Rosie's Trust and provide help and support in all aspects of pet care, including feeding, grooming, exercising, play and stimulation, and vet visits.

Our volunteers are our eyes and ears, ensuring when they visit that our beneficiaries are as well as can be and providing welcome social contact for many. Our volunteers work in teams, with each member making two visits a week.

An average of three volunteers is allocated to each beneficiary.

Our volunteers receive intense training before being matched to a beneficiary. This ensures they all have a sound understanding of Rosie's Trust's policies and procedures to promote the health and wellbeing of our beneficiaries, their pets, and the volunteers themselves. They are also trained to signpost to partner organisations, wherever necessary.

Since our establishment in 2015, we have served 214 beneficiaries. They are located in four of the five Health and Social Care Trusts (Belfast, Northern, Southern and South Eastern).

We undertake a very thorough assessment process of each of our beneficiaries and their pets. This enables us to develop tailored action plans, which take into account and address all the risks we have identified and ensure the best match for the beneficiary with our volunteers. We also have robust safeguarding policies in place to protect our beneficiaries and our volunteers. Social workers from the Health and Social Care Trusts refer potential beneficiaries to us as do organisations such as Macmillan Cancer Support (NI). Although we particularly encourage third party referrals, we do accept self-referrals.

Our work has been made possible thanks to core funding from the National Lottery Community Fund.



Public Benefit

1) The advancement of health or the saving of lives.

We maintain the health and wellbeing of both the beneficiary and their companion animal by alleviating the stresses and anxiety felt when they are no longer able to care for their pet independently.



2) The relief of those in need by reason of age, ill-health, disability, financial hardship or other disadvantage.

Rosie's Trust works with those experiencing terminal illness, acute cancer treatment, age and disability, maintaining their relationship with their companion animal and working with partner organisations to help the beneficiary overcome other challenges.



3) The advancement of animal welfare.

Our work keeping people and their pets together supports our beneficiaries in ensuring the care they provide their animal meets the five welfare needs as detailed in the Welfare of Animal Act (Northern Ireland) 2011.



Highlights of the year

"Rosie's Trust gave me my life back."

It is hard to imagine seven more powerful words to describe the work of any charity, still less our own!

The words belong to one of Rosie's Trust beneficiaries who feared they would have to give up their companion pet when they received a terminal diagnosis. They are just seven of several hundred words of endorsement expressed by respondents to our 2023 survey. We distribute these surveys every year to obtain feedback on our services so that we can continually improve these and address any issues arising.

We always ask what difference Rosie's Trust has made to their lives as well as the impact it has had on their mental health. Ninety-six per cent of respondents said that our services had made a "big difference" to:

- ✔ Their lives.
- ✔ Their stress/anxiety levels.
- ✔ Their feeling more confident.
- ✔ Reducing loneliness and their sense of isolation.

The remaining four per cent believed Rosie's Trust had made "quite a lot of difference" to their lives.

When asked to explain why the charity had made a big difference to their lives, responses typically referred to the importance of having someone check in on them every day and the "wee chats" they enjoyed with the volunteers.

More beneficiaries and companion pets supported in 2023 -2024



Our volunteers also reported that Rosie's Trust had had a very positive impact on their lives, most frequently stating how "rewarding" they found the volunteering to be and how it had given them a "sense of purpose".

"I absolutely love knowing that by giving up just a small portion of my time each week I am making such a difference to someone's life." Rosie's Trust volunteer

Another summed up their experience with four short words:

"Awesome charity, great support."

Highlights of the year cont'd...

A busy year for staff and volunteers beyond direct beneficiary support



Too many fundraisers to mention this year!

We are indebted to all the wonderful people around Northern Ireland who supported our work during the year - there are simply too many of them to mention in these short pages. However, we have shouted out to them all in our social media on every possible occasion!

They include Georgia Gow and Neil Currie, who were undeterred by the terrible weather to take on the Belfast Half Marathon to raise funds on our behalf.

We are so grateful to the National Lottery Community Fund for awarding us a Dormant Accounts grant last year. This enabled us to employ two part-time staff, one of whom is a dedicated Community Engagement and Fundraising Lead. Nuala Muldoon deserves credit for many of the fundraising initiatives listed, even though she started only in December!



Still smiling! Huge congratulations to Georgia Gow and Neil Currie who both completed the Belfast Half Marathon in the most miserable conditions! They raised £410 and £570 respectively - fantastic result!



We were thrilled to receive this generous cheque from Jason Beddoes, Director of the Dog Field (NI). They raised £500 for Rosie's Trust with the sale of their 2024 calendar featuring all the dogs in their care.



Huge thanks to the staff of Kingsbridge Healthcare Group for choosing to support our work this year and help keep people and their pets together! Dr Martin Shields, Chair of Kingsbridge Foundation and Medical Director at Kingsbridge Healthcare Group, said: "We are delighted to provide Rosie's Trust with a £20,000 donation. Pets play such an important role in people's lives, and we sometimes find that patients might delay treatment as they worry over who will help take care of their beloved dog or cat, so it is great that the charity removes this concern for beneficiaries, not only when they are faced with this situation, but in their daily lives."



Our volunteer ambassador, Kim set herself the challenge of walking three ten-mile walks over three months and raised more than £600! She was joined by 14-year-old Ben, who needed a bit of help along the way!



Many thanks to our veteran volunteers Olivia Crookes, Lynda Crozier, Anne Tweed and Ruth Pinkerton for staffing a stall at Tesco, Springhill, just before Christmas. Huge thanks also to Tesco and customers for their generosity! The collection raised more than £600!

Highlights of the year cont'd...



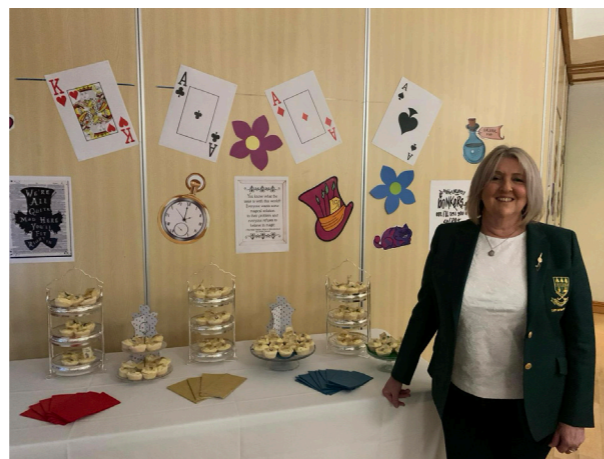
Bonanza! The Dog Agility community also raised £1,000 for Rosie's Trust this year!



Waiting for the guests to arrive! Aileen Martin kindly hosted a coffee morning at her home to raise over £2,000 for Rosie's Trust. She is pictured here with Trustees Joyce Savage, Gayle Lavery, Clare Jess and Emer Rice as well as staff Sandra McFadden, Laura Quinn and Jayne McStay. Well-known former broadcaster Julian Simmonds kindly MCed the event.



We had a bit of fun taking pics of our new 2020 Citroen Berlingo van. We were able to buy this van, which had only 35,000 miles on the clock, thanks to a generous grant from Clothworkers' Federation. They are based in London so we thought we'd include pictures of the van at iconic NI spots in our progress reports.



"I suppose I ought to eat or drink something or other; but the great question is, 'What?'"

A massive thank you to Debbie Thompson, Lady Captain at Shandon Park Golf Club, who kindly chose to support Rosie's Trust during her year of captaincy. They held their first Ladies' Night of the season with an Alice in Wonderland-themed night of a meal and a quiz. They raised more than £600 on that occasion alone!



Irish Whiskey auctions raised more than £10,000 for Rosie's Trust - we were - and remain - simply overwhelmed by their generosity!



Our volunteers did a fantastic job holding raffles at a series of Tribute Nights at Hastings Hotels over Christmas/New Year. Caroline Forsythe and Gabi Kerr cleverly managed to grab a photo with The Mowtown Sensations! Huge thanks to all the volunteers who helped out with the raffles and, of course, to Hastings Hotels for the opportunity.



Thank you!

And finally a collective shout out to our core funder, the National Lottery Community Fund, on Crossed Finger Selfie Day 14 November 2023!

Many thanks also to Denise Cranston, Head of Partnerships Practice at 2 into 3, who generously provided a free training session to some of our staff on developing corporate partnerships.

Surely and steadily increasing our presence in communities far and wide

Thanks again to our wonderful volunteers, we have been able to set up stalls at community events all around Northern Ireland and to present to community groups as and when requested.

This year we trained 10 ambassadors who have made this possible. Previously, these events were undertaken by a small team of staff who were necessarily limited in the number they could attend.

We have also been helped enormously in raising our public profile thanks to a generous donation from the John Atcheson Trust. We spent this on purchasing basic equipment, signage and promotional material to display at events. We also invested in various interactive tools, from colouring books to quizzes, as well as branded give-aways and/or purchases to attract passers-by to our stalls.

Many thanks also to the Halifax Foundation for providing the funds needed to buy branded clothing for our volunteers!

Highlights of the year cont'd...



Thanks to our fantastic Ambassadors, we have been able to hold an increasing number of awareness raising events throughout the year. Pictured here are Nicola Brown and Kim Hamilton, who gave a presentation to the Ravenhill Presbyterian Women's Group.



Across the ages: At the Positive Ageing Roadshow with Ards and North Down Borough Council...



... and the QUB Fresher's Fair! We were thrilled to be shortlisted as Queen's University Belfast's Student Union RAG Charity of the Year. Fingers crossed for next year!



One of our longest-serving volunteers, Ruth Pinkerton assumes a number of roles for Rosie's Trust, including that of Ambassador. She is pictured here at one of the many presentations she has given throughout the year, on this occasion to the staff at Kingsbridge.



Development Officer Laura Quinn with her two beautiful daughters, Eliza and Holly. They managed our stall at Cancer Focus's Woodland Walk in Springhill. Many thanks to Richard's Photography for the photo!



Our Volunteer Support Officer Sandra McFadden with her dog Pippa, together with volunteers Rachel Miskimmin, Anne Finlay and Nancy the greyhound. They hosted a stall at Pet Nose Day, Mount Stewart.

Communications reaching new audiences across Northern Ireland

Our communications and messaging – through all forms of media – improved significantly during the year. This was due in large part to the presence – for the first time – of our part-time Communications and Marketing Lead, Claire Smyth, on the team. Rosie's Trust was able to employ Claire thanks to the award of a two-year Dormant Accounts grant.

One of Claire's many initiatives was to introduce two regular newsletters; one specifically for our volunteers, and the other for our supporters.

Steady increase in social media following:

	April 2023	March 2024	Increase
Facebook	7.7k	8.5k	+800
Instagram	761	990	+229
X	746	758	+12
Linked In	71	146	+65
Mailing List	480	690	+210

Rosie's Trust stall mounted record number of times around NI



SIGN UP TO OUR NEWSLETTER

And be the first to hear all our pawsome news!

While Claire has been busy primarily with external communications, our internal communications with volunteers have taken a huge leap thanks to the tireless work of our longstanding volunteer, John McGarrigle, in developing an increasingly sophisticated user-friendly volunteer portal.

Highlights of the year cont'd...

Subscribe 12 issues for £25

Ulster Tatler

Utterly beautiful. Utterly inspiring. Utterly entertaining. Utterly informative. Utterly fun.

Utterly beautiful. Utterly inspiring. Utterly entertaining. Utterly informative. Utterly fun.

The mainstream media has been providing increased coverage of Rosie's Trust. This is, of course, another important mechanism to increase public awareness of the services we provide.

Taking every opportunity to improve interactions with our volunteers



Our Chair, Aileen Martin, was pleased to meet with some of our wonderful volunteers soon after she joined the charity.

News Letter Sign In [Subscribe](#)

News Sport Opinion What's On Submit Your Story Your World Retro Lifestyle e-Paper Farming Puzzles Advertise

It's a 'Derry' good day as Rosie's Trust secures support from Lisa McGee

By Helen McGurk

Published 6th Feb 2024, 11:30 GMT | Updated 7th Feb 2024, 09:04 GMT

IBES SESAY ANNOUNCED AS AMBASSADOR FOR ROSIE'S TRUST

Northern Ireland charity Rosie's Trust, dedicated to helping cancer patients, terminally ill and older patients with a disability stay together with their pets, has announced that Q Radio presenter Ibe Sesay has been appointed as an ambassador.



Thanks to support from the Halifax Foundation, we were able to arrange meet ups for the volunteers in all the different regions where we work. Team meet-ups are an important part of the Rosie's Trust volunteer journey; they're an opportunity for volunteers to get to know the other members of their team, share experiences and provide support to each other.

DOG SUPPORT VOLUNTEERS needed urgently!

Do you live in Newcastle?

ROSIE'S TRUST

We are so fortunate to be able to recruit volunteers close to where new beneficiaries live, wherever that may be.

Highlights of the year cont'd...



We enjoyed wonderful sunshine at our walk in Stormont to celebrate Volunteers Week

Fostering and rehoming service gets a boost from Danske Bank employees

Rosie's Trust provides foster care for the cats and dogs of our existing beneficiaries when they need hospital treatment or hospice care.

We are indebted to the Danske Bank Employees' Charity Group who made a very generous donation to help us set a fund specifically for that purpose. Their donation will directly benefit the animals in our care by providing them with essential medical care, food, comfortable shelter, and a loving environment. It will also enable us to continue our efforts in finding forever homes for these pets, ensuring they are placed with responsible and caring individuals or families.

There was unprecedented demand for foster care this year and we are so grateful to our newly-trained transport volunteers for helping us move the animals between our different volunteer foster carers.

Leveraging our impact through advocacy and networking

In addition to all the individuals and organisations that have financially supported Rosie's Trust this year, it is also important to note that we are slowly but surely increasing the number of people who lend us support in other ways. One such person is Professor Siobhan O'Neill, Northern Ireland's Mental Health Champion. We met with her in February and were blown away by her genuine enthusiasm and support of our work. This was her first introduction to the charity, yet she immediately understood the impact of our work, not only in terms of promoting mental health, but also in addressing social isolation, depression and anxiety, not to mention animal welfare.



NI's Mental Health Champion is a passionate supporter of Rosie's Trust.

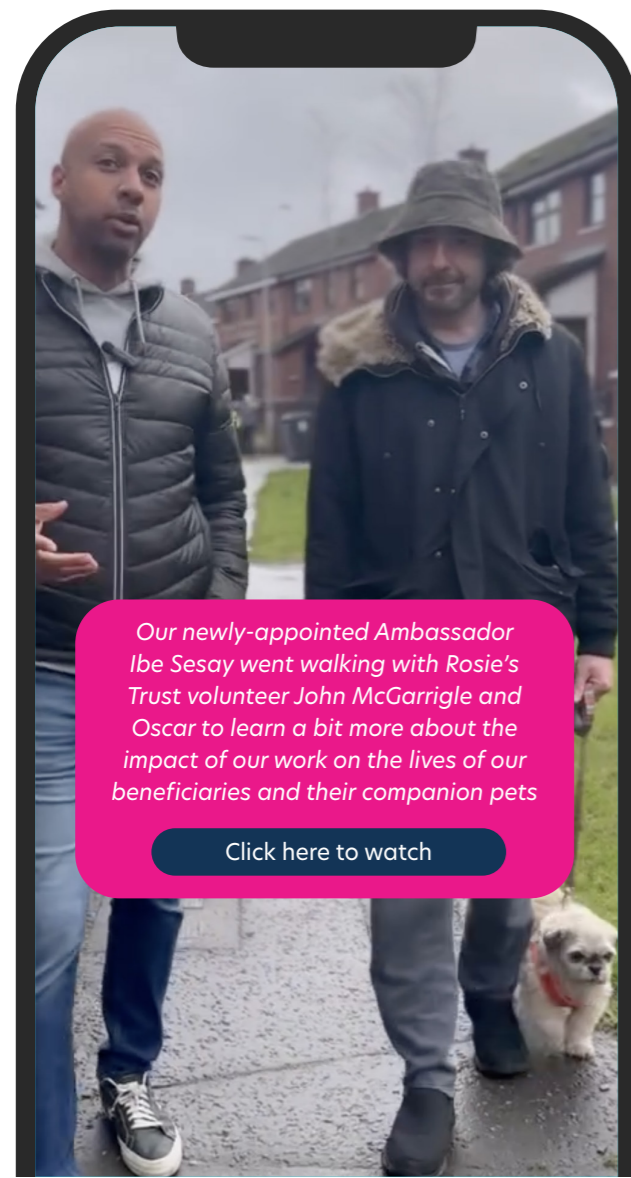
Professor O'Neill kindly volunteered the following quote for use in our funding applications and elsewhere, as appropriate:

"Rosie's Trust is a unique, life-changing charity in Northern Ireland. It provides a vital service to some of the most vulnerable members of our community. It ticks so many boxes that it cannot be placed into any one service category; it promotes mental health and wellbeing, addresses social isolation, provides a regular 'check in service', not to mention animal welfare. The profound impact of the bond that exists between an individual and their companion pet cannot be over-estimated, especially when that person lives alone and is unable to provide the care their pet needs because of cancer treatment, end of life care or age-related mobility issues".

We also joined up with other like-minded organisations to gain leverage in our advocacy work. To that end, we successfully applied this year to join the NI Companion Animal Welfare Group and the UK-wide Association of Dogs and Cats Homes.

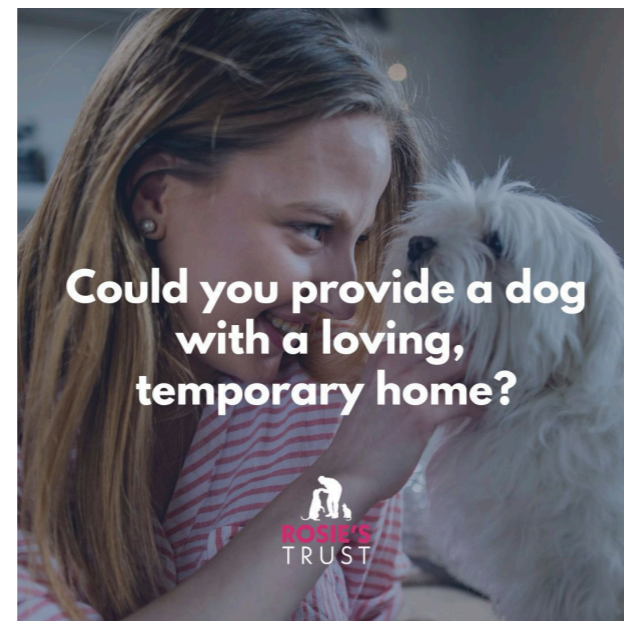
Rosie's Trust has continued to build relationships with a wide range of organisations in the voluntary and community sector as well as the private and public sectors. This is a key performance objective as we know collaborations are essential to increase our reach and impact.

Rosie's Trust is represented at all the HSC Trust locality meetings. We are also active contributors to the Area Integrated Partnerships project. Our main partners at present, apart from the social workers and care teams with whom we are in daily contact, are organisations such as Macmillan Cancer Support and Marie Curie who are among our principal referral agencies.



Our newly-appointed Ambassador Ibe Sesay went walking with Rosie's Trust volunteer John McGarrigle and Oscar to learn a bit more about the impact of our work on the lives of our beneficiaries and their companion pets

[Click here to watch](#)



There was a huge spike in demand for foster care this year, but we were able to keep up with demands thanks to our Foster Volunteers! We provide foster care for existing beneficiaries who need hospital or hospice care.

Thank you to all our wonderful volunteers!

Active Volunteers (Apr 23 - Mar 24)	Role 1	Role 2	Role 3	Role 4	Role 5	Active Volunteers (Apr 23 - Mar 24)	Role 1	Role 2	Role 3	Role 4	Role 5
Aileen Martin	Trustee					Emily Graham	Fundraiser	Ambassador			
Aisling Fitzgerald	Canine Support					Emma Clarke	Canine Support				
Aisling Fitzmaurice	Canine Support	Foster	Phone Support	Co-ordinator		Emma-Kate McClay	Canine Support				
Alex Elliot	Canine Support					Erin Galbraith	Canine Support				
Alison McIlroy	Canine Support	Foster	Foster			Evie Gardner	Canine Support				
Andy Gorringe	Canine Support					Felicia Chan	Canine Support				
Ann Payne	Canine Support					Fiona Coulter	Canine Support				
Ann Quigley	Canine Support					Fiona Hutchinson	Canine Support				
Anne Baker	Fundraiser	Ambassador	Canine Support			Fionnuala Fearon	Canine Support				
Anne Finlay	Ambassador					Frances Steele	Canine Support				
Anne Tweed	Fundraiser	Phone Support	Canine Support			Gail Spiers	Canine Support				
Antoinette Hagan	Canine Support	Foster				Gale Lavery	Trustee				
Arlene McEvoy	Canine Support					Garielle (Gabi) Kerr	Fundraiser	Ambassador			
Asia Haraburda	Canine Support					Geoffrey Parks	Canine Support	Foster			
Ava Inman	Canine Support					Geraldine McKinley	Canine Support	Foster			
Beatrice Major	Canine Support					Gill Williams	Canine Support				
Beatriz Garcia-Torresano	Canine Support					Glenda Burns	Canine Support				
Bernie Smyth	Canine Support					Grianna Evans	Transport	Admin			
Beverly Huddleston	Foster					Guy Irwin Smith	Canine Support				
Brigitte Bartholome	Canine Support					Harry Morrow	Foster				
Carol Noble	Canine Support					Hazel Cameron	Canine Support				
Caroline Forsyth	Fundraiser	Ambassador	Canine Support			Helen Kerr	Canine Support				
Carolyn McGinnell	Canine Support					Helen McLaughlin	Canine Support				
Carolyn Tweed	Canine Support					Helene Sloan	Canine Support				
Catherine Kelly	Canine Support	Foster				Hilary Idzikowska	Foster				
Catherine McConville	Foster					Hilary Neil	Canine Support				
Cathy Wilcock	Canine Support					Ian Brown	Canine Support				
Chris Idzikowska	Foster					Ilene Barrington	Canine Support				
Chris McGarry	Canine Support					Imelda McConnell	Canine Support				
Chrissie Henderson	Canine Support					Ivan Noble	Canine Support				
Cilla Sherman	Phone Support	Canine Support				Jackie Morgan	Foster	Dog Listener			
Claire Guyer	Canine Support					Jane Bell	Canine Support				
Claire Malone	Canine Support					Jane Campbell	Canine Support				
Clare Cowan	Fundraiser	Canine Support				Janet Armstrong	Co-ordinator	Phone Support			
Clare Jess	Trustee					Janet Neil	Canine Support				
Colette Roe	Canine Support					Janice McBriar	Canine Support				
Courtney Rea	Canine Support					Jennifer McDowell	Canine Support				
Danielle Ingram	Canine Support					Jill Aiken	Foster				
Dawn Steveson	Canine Support					Jill Hawthorne	Trustee				
Dean Lee	Canine Support					Jill Kerry	Foster				
Debbie Millar	Canine Support					Jill McLean	Transport				
Deborah Frost	Canine Support					Jill Truesdale	Canine Support	Foster			
Deborah McMurran	Canine Support					Joan Curran	Canine Support				
Deidre Moody	Canine Support					Joanna Rea	Canine Support				
Denise Davies	Ambassador	Canine Support				Joanne Parks	Phone Support	Ambassador	Canine Support	Foster	
Denise Durnien	Canine Support					Josephine Mallon	Trustee				
Diane Dickson	Foster					John Cassells	Canine Support				
Diane Torrens	Canine Support					John McGarrigle	Canine Support	Admin	Foster		
Edna Wills	Foster					Jo-Jo McLaughlin	Canine Support				
Elaine Wilson	Canine Support					Jonathan Twinem	Canine Support				
Ellen Ferris	Canine Support					Joy McGimpsey	Trustee				
Emer Rice	Trustee					Joyce Savage	Trustee				

Thank you to all our wonderful volunteers!

Active Volunteers (Apr 23 - Mar 24)

Active Volunteers (Apr 23 - Mar 24)	Role 1	Role 2	Role 3	Role 4	Role 5
Judith McCormack	Fundraiser	Canine Support			
Judith Ragg	Canine Support				
Judith Watt	Foster				
Justine McIntyre	Canine Support				
Karen Boutros	Fundraiser				
Karen Smyth	Canine Support				
Karen Steele	Canine Support				
Kate Daly	Canine Support	Transport			
Kate McNeill	Canine Support				
Katrina Jones	Canine Support				
Keith Scott	Canine Support				
Kim Hamilton	Fundraiser	Ambassador			
Kimberley Newell	Canine Support				
Kirsty Davidson-O'Neill	Canine Support				
Kristina Clyde	Canine Support				
Lara Carlin	Canine Support				
Laura Hamilton	Canine Support				
Liana Wylie	Canine Support				
Lianne Mullholland	Canine Support				
Linda Brown	Canine Support				
Linda Marks	Transport	Canine Support			
Linda McDonald	Canine Support	Foster			
Lisa Clydesdale	Canine Support				
Lisa Curtis	Canine Support				
Lisa Mehigan	Canine Support				
Liz Brown	Canine Support				
Lorna Crockett	Canine Support				
Lorraine Nesbitt	Fundraiser	Phone Support	Ambassador	Canine Support	
Louise Heatley	Trustee				
Lucia Flanagan	Canine Support				
Lyn Cummings	Canine Support				
Lyn Watson	Foster				
Lynda Crozier	Fundraiser	Co-ordinator	Transport	Ambassador	Canine Support
Lynda Graham	Foster				
Lynn Magill	Canine Support				
Lynne Hamilton	Ambassador	Canine Support			
Lynsey Grant	Canine Support	Foster			
Madhavi Pasapula	Canine Support				
Magdalena Mielcarek	Canine Support				
Maggie Kelly	Canine Support				
Maia Magee	Foster				
Malcolm McKibbin	Foster				
Malcom McKibbin	Foster				
Margaret Fulford	Canine Support				
Marie Caffola	Canine Support				
Mark Lamont	Canine Support				
Mark McConville	Foster				
Mary McNeilly	Ambassador				
Mary O'Hara	Canine Support				
Matthew McBride	Canine Support				
Maureen McCartney	Canine Support				
Melanie Patton	Canine Support				

Active Volunteers (Apr 23 - Mar 24)

Active Volunteers (Apr 23 - Mar 24)	Role 1	Role 2	Role 3	Role 4	Role 5
Michael Kelly	Canine Support				
Michael McDowell	Canine Support				
Morris Cameron	Canine Support				
Muire Creed	Canine Support				
Muriel Gillespie	Canine Support				
Nacy Henry	Foster				
Natasha Walker	Canine Support				
Neil Baird	Canine Support				
Neil Currie	Canine Support				
Niall McInerney	Canine Support				
Niamh McCann	Canine Support				
Niamh Nixon	Canine Support				
Nicola Brown	Fundraiser	Ambassador	Canine Support		
Noeleen Brennan	Canine Support				
Olivia Crookes	Fundraiser	Phone Support	Ambassador		
Oonagh Lynch	Canine Support				
Paul Hart	Foster				
Pauline Hughes	Canine Support				
Peter Crozier	Canine Support				
Rachel Livingston	Canine Support				
Rachel Miskimmin	Fundraiser	Canine Support			
Rebecca Neilson	Canine Support				
Rhiannon Jones	Canine Support				
Richard Gapper	Canine Support				
Rita Tucker	Canine Support				
Robin Stevenson	Canine Support				
Rosaleen Mullan	Canine Support				
Rose Templeton	Canine Support				
Russell Scott	Canine Support				
Ruth Pinkerton	Fundraiser	Co-ordinator	Phone Support	Ambassador	Canine Support
Sara Wilson	Canine Support				
Shane Rafferty	Canine Support				
Sharon Branigan	Canine Support				
Sharon Hart	Foster				
Sharon Magorrian	Canine Support				
Sharon McAleenan	Canine Support				
Shaun Pridgen	Canine Support				
Simon Simpson	Canine Support				
Sophie Stephenson	Canine Support				
Stefanie Morrow	Transport	Foster			
Stephen Aiken	Canine Support				
Susan Mckibbin	Fundraiser	Ambassador	Canine Support		
Susan Piggot	Canine Support				
Susan Winch	Foster				
Suzanne O'Hara	Canine Support				
Suzie Ferris	Foster				
Terri Mayne	Canine Support				
Thomas Duncan	Canine Support				
Tim Leonard	Trustee				
Tracey Rylance	Canine Support				
Trina O'Callaghan	Ambassador	Canine Support			
Victoria Johnston	Canine Support				
Wallace Henry	Foster				
Wayne Watson	Foster				

Financial position and reserves

At 31st March 2024 Rosie's Trust held restricted reserves of £30,416 and unrestricted reserves of £97,106. Rosie's Trust aims to hold at least three months running costs on reserves (approximately £55,000) to deal with any unforeseen circumstances including, but not limited to the winding up of the charity in the event of being unable to raise any further substantial funding to allow the payment of staff salaries and running costs. The Trustees and operations staff will consider on a regular basis the levels of funding that it holds and how this funding can be used to benefit the charity and the services that it provides and to best meet the needs of its beneficiaries and volunteers.

In the 2023-24 financial year the majority of core costs including salaries were covered from a grant from National Lottery Community Fund and other restricted funds to cover the costs associated with particular activities or projects. We also received a level of unrestricted funding, mainly from donations, which was directed to other costs as required.

We were very fortunate to receive a three-year grant from the National Lottery Community Fund in April 2023. This followed a five-year grant generously provided by the National Lottery Community Fund in 2018. We would like to take this opportunity to once again thank the National Lottery Community Fund for their support for making our work possible.

Statement of Trustees' Responsibilities

The Trustees are responsible for preparing the Annual Report and the financial statements in accordance with applicable law and regulations.

The Trustees are required to prepare financial statements for each financial year. In preparing the financial statements, the Trustees are required to:

- select suitable accounting policies and then apply them consistently;
- make judgements and estimates that are reasonable and prudent; and
- prepare the financial statements on a going concern basis unless it is inappropriate to presume that the organisation will continue in business.

The Trustees are responsible for keeping proper accounting records that disclose, with reasonable accuracy at any time, the financial position of the organisation and that enable them to ensure that the financial statements comply with the requirements of The Regulator for Charities in Northern Ireland. They are also responsible for safeguarding the assets of the organisation and hence for taking reasonable steps for the prevention and detection of fraud and other irregularities.

Statement of Trustees' Confirmations

In the case of each of the persons who are Trustees at the time when the report is approved, the following applies:

- a) so far as each Trustee is aware, there is no relevant information (information needed by the organisation's independent examiner in connection with preparing their report) of which the company's independent examiner is unaware; and
- b) each Trustee has taken all the steps that he or she ought to have taken as a Trustee in order to make himself or herself aware of any relevant information and to establish that the organisation's independent examiner is aware of that information.

BY ORDER OF THE BOARD OF TRUSTEES



Aileen Martin
Chair



Karen Steele
Treasurer

Date 24 January 2025

Independent Examiner's Report to the Charity Trustees of Rosie's Trust

We report on the accounts of the Trust for the year ended 31 March 2024, which are set out on pages 28 to 34.

Respective responsibilities of charity trustees and examiner

As the charity's trustees of the Trust you are responsible for the preparation of the accounts in accordance with the Charities Act (Northern Ireland) 2008.

It is my responsibility to:

- examine the accounts under section 65 of the Charities Act
- follow the procedures laid down in the general Directions given by the Commission under section 65(9)(b) of the Charities Act
- state whether particular matters have come to my attention.

Basis of independent examiner's report

I have examined your charity accounts as required under section 65 of the Charities Act and my examination was carried out in accordance with the general Directions given by the Charity Commission for Northern Ireland under section 65(9)(b) of the Charities Act.

My examination included a review of the accounting records kept by the charity and a comparison of the accounts presented with those records. It also included consideration of any unusual items or disclosures in the accounts, and seeking explanations from you as charity trustees concerning any such matters. My role is to state whether any material matters have come to my attention giving me cause to believe:

1. That accounting records were not kept in accordance with section 63 of the Charities Act
2. That the accounts do not accord with those accounting records
3. That the accounts do not comply with the accounting requirements of the Charities Act
4. That there is further information needed for a proper understanding of the accounts to be reached.

Independent examiner's statement

I have completed my examination and have no concerns in respect of the matters (1) to (4) listed above and, in connection with following the Directions of the Charity Commission for Northern Ireland, I have found no matters that require drawing to your attention.

Margaret Fulford B.Sc. (Econ) FCA
Independent Examiner

On behalf of
James Fulford & Co Ltd,
Chartered Accountants
PO Box 152
Newtownards
BT23 5GW

24 January 2025

STATEMENT OF FINANCIAL ACTIVITIES

	Unrestricted Funds £	Restricted Funds £	Total £	Prior Year Total £
Incoming from:				
<i>Charitable activities</i>	96,791	194,393	291,184	129,182
Total	96,791	194,393	291,184	129,182
Expenditure on:				
<i>Raising funds</i>	(1,696)	-	(1,696)	(668)
<i>Charitable activities</i>	(36,302)	(167,702)	(204,004)	(158,393)
Total	(37,998)	(167,702)	(205,700)	(159,061)
Transfer between funds	(1,919)	1,919	-	-
Net Movement in funds	56,874	28,610	85,484	(29,879)
Reconciliation of Funds				
<i>Total funds brought forward</i>	40,232	1,806	42,038	71,917
Total Funds Carried Forward	97,106	30,416	127,522	42,038

Continuing operations - The organisation commenced operations on 20th January 2015. There has been no change in operations in the current year or the previous year.

Historical cost profit and losses - The difference between the results disclosed above and the results on an unaudited historical cost basis is not material.

INCOME AND EXPENDITURE ACCOUNT

PERIOD ENDED 31 MARCH	2024 Unrestricted Funds £	2024 Restricted Funds £	2024 Total £	2023 Total £
INCOME				
General income, donations etc.	96,791	194,393	291,184	129,182
OPERATING EXPENSES				
Salaries and wages	7,811	130,445	138,256	85,346
Staff Pension Costs	353	6,226	6,579	4,126
Rent	-	480	480	480
Sundry fundraising	1,696	-	1,696	668
Direct Expenditure on Beneficiary support	3,170	1,546	4,716	6,662
Consultancy	10,055	11,900	21,955	36,400
Promotional materials	5,981	2,458	8,439	1,308
Travel and Motor Expenses	-	8,296	8,296	5,733
Training	-	180	180	-
Telephone	3,428	-	3,428	2,368
Postage, Stationery, Advertising	68	606	674	93
Insurance	1,215	1,289	2,504	2,079
General	3,402	3,100	6,502	8,604
Subscriptions	471	-	471	219
Depreciation	848	1,176	2,024	4,975
Profit on sale of fixed assets	(500)	-	(500)	-
	37,998	167,702	205,700	159,061
(DEFICIT)/SURPLUS FOR THE YEAR				
- Normal Activities	58,793	26,691	85,484	(29,879)
Transfer between funds	(1,919)	1,919	-	-
	56,874	28,610	85,484	(29,879)

BALANCE SHEET

AS AT 31 MARCH	2024		2023	
	£	£	£	£
FIXED ASSETS				
Restricted Funds Equipment		17,469		1,806
General Funds Equipment		4,412		-
		21,881		1,806
CURRENT ASSETS				
Debtors	2,016		-	
Cash at Bank and in Hand	139,963		63,060	
	141,979		63,060	
CURRENT LIABILITIES				
Creditors	(4,408)		(1,826)	
NET CURRENT ASSETS		137,571		61,234
Deferred Income		(31,930)		(21,002)
TOTAL NET ASSETS		127,522		42,038
REPRESENTED BY				
Revenue reserves		127,522		42,038

SIGNED FOR AND ON BEHALF OF
THE BOARD OF TRUSTEES

Aileen Martin  TRUSTEE

Karen Steele  TRUSTEE

NOTES TO THE FINANCIAL STATEMENTS

The financial statements have been prepared in accordance with the Charities SORP (FRS 102). Rosie's Trust is a registered charity and a public benefit entity. The currency used for the reporting of these financial accounts is Sterling (GBP).

1. ACCOUNTING POLICIES

The following accounting policies have been used consistently in dealing with items which are considered material in relation to the company's financial statements.

(a) Basis of Preparation

The financial statements are prepared under the historical cost convention.

(b) Fund Accounting Policy

Unrestricted income funds are general funds that are available for use at the trustees' discretion in furtherance of the objectives of the charity.

Restricted funds are those donated for use in a particular area for specific purposes, the use of which is restricted to that area or purpose.

(c) Fixed Assets and Depreciation

Fixed assets are shown in the accounts at their purchase price (or at an equivalent amount if the assets were donated). This amount is then depreciated so that the assets are written down to their anticipated resale value over the period the company will use them. The depreciation rates and methods adopted are:

Straight Line	
Equipment, furniture and fittings	20%
Van	25%

(d) Incoming Resources

Income includes subscriptions, donations and other cash received and receivable. Donations are recognised where there is entitlement, certainty of receipt and the amount can be measured with sufficient reliability. Investment income is recognised on a receivable basis.

Income was attributable to the one principal activity of the company carried on within the United Kingdom and Europe.

(e) Finance Leases

If assets are leased and the terms of the agreement are almost equivalent to an outright purchase, a fixed asset and an equivalent liability are created.

The fixed asset is then depreciated using the rates and method shown in note (b) above.

The interest element of the lease is charged as an expense over the primary period of the lease, based on the capital outstanding.

2. TRUSTEES' EMOLUMENTS

All board members give their services on a voluntary basis, and no remuneration is paid to them.

3. PARTICULARS OF EMPLOYEES

Rosie's Trust receives the services of many people, including volunteers (both members and non-members) and employees.

The analysis by function of the average number of people employed by the organisation during the year (excluding trustees) was:

	2024	2023
Service Delivery	4	3

Their remuneration was:

	2024	2023
	£	£
Wages and salaries	131,575	82,523
Employer Pension Contributions	6,579	4,126
Social Security costs	6,681	2,823
	144,835	89,472

Rosie's Trust's work would not have been as extensive as it has been without the dedicated services of our volunteers, as noted in the Trustees' Report.

We are very grateful for their gift of time to the charity.

4. FIXED ASSETS

	General Fund	Restricted Fund	Total
	Assets	Assets	
VALUATION/COST	£	£	£
At 31 March 2023	7,000	7,656	14,656
Additions	5,260	16,839	22,099
Disposals	(7,000)	-	(7,000)
At 31 March 2024	5,260	24,495	29,755
DEPRECIATION			
At 31 March 2023	7,000	5,850	12,850
Charge for the year	848	1,176	2,024
Disposals	(7,000)	-	(7,000)
At 31 March 2024	848	7,026	7,874
NET BOOK VALUE			
At 31 March 2024	4,412	17,469	21,881

5. REVENUE RESERVES

The analysis of restricted funds is given below.

	Sundry Grant £	Dormant Accounts Fund NI £	National Lottery Community Fund £	Total £
Reserves brought forward	1,806	-	-	1,806
Received in the year	34,600	50,000	120,721	205,321
Deferred income b/fwd	-	21,002	-	21,002
	36,406	71,002	120,721	228,129
Less: Expenditure				
Income and Expenditure	(4,814)	(39,072)	(122,640)	(166,526)
Transfer between funds	-	-	1,919	1,919
Fixed assets depreciation	(1,176)	-	-	(1,176)
Deferred income c/fwd	-	(31,930)	-	(31,930)
Reserves carried forward	30,416	-	-	30,416

Revenue reserves include grants that have preconditions attached. These grants are separated as shown above and relevant expenditure is allocated against them.

Any funds unspent at the end of the year are carried forward if the charity has received them outright, and they are shown as income in the year received. Any funds received that are repayable to the granting body if unspent are shown as income to the extent that expenditure has been incurred and a deferred income liability is included for the amount not yet spent.

6. ORGANISATION INFORMATION

The organisation was formed by Trust deed. It is registered with HMRC and The Regulator for Charities in Northern Ireland as a charity. It operates within Northern Ireland and its registered address is The Fountain Centre, 2 Queens Parade, Bangor, BT20 3BJ.

The nature of the entity's operations and a description of the principal activities is included in the Trustees' report.

7. APPROVAL OF FINANCIAL STATEMENTS

These financial statements were approved by the Board of Trustees on 24 January 2025



We'd love to talk to you about Rosie's Trust so please call us on **02891 641340** or visit **rosiestrust.org** for more information.



Rosie's Trust is registered with the Charity Commission for Northern Ireland NIC102422. Registered office 2 Queen's Parade, Bangor BT20 3BJ