



Kids in Control
(KIC)

Report & Financial
Statements

Year ending 31st
March 2023

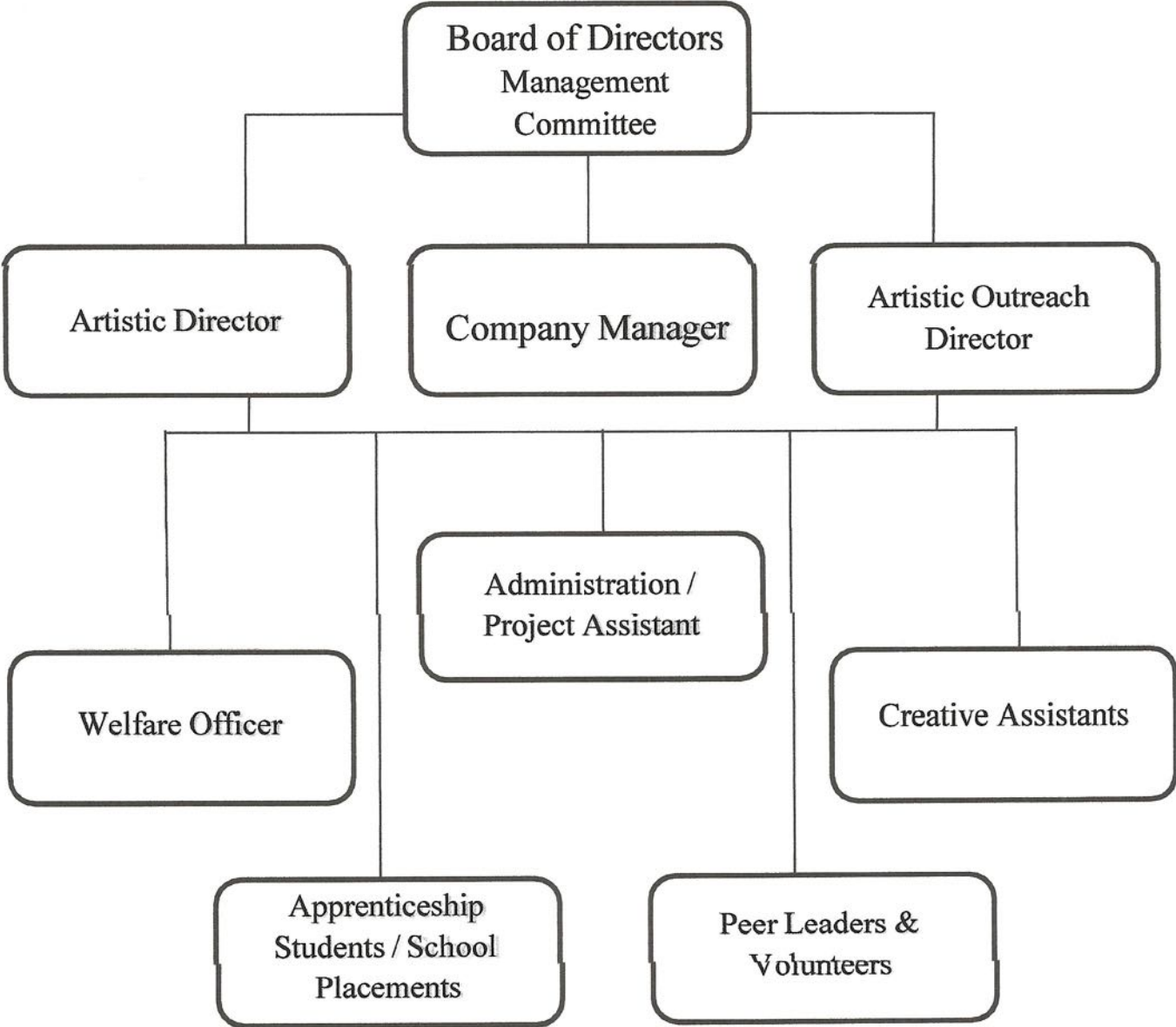
Company Address: Beat Carnival Centre, 11-47 Boyd Street, Belfast, BT13 2GU

Website: www.kidsincontrol.co.uk

Company Number: NI032412

Charity Number: 100337

ADMINISTRATION



BOARD STRUCTURE

KIC has a voluntary Board of members (made up of representatives from the education, disability, voluntary, and business sectors), which is serviced by the Company Manager. The Board meets 6/8 times a year. Its remit is to oversee all company activity, providing guidance, good governance, safeguarding the vision and ensuring the company develops as a model of best practice. In addition, Board members participate in sub-committees to support specific areas such as finance and marketing or to drive policy or change in areas such as Safeguarding.

The KIC Committee receives Board and Governance Training through Arts & Business. Members will continue to receive training opportunities in a variety of areas from business to social media.

We have a strong and diverse Board and over the next 3 years we plan to increase and strengthen Board membership and sub-committees further.

Board Members 2022 - 2023:

Frances Macklin (Director/Chair), Mary Mullan (Director), Lorraine Frew (Director) David Bell (Treasurer), Joanne Atkinson (Secretary), Andrew Potter, Nicholas Moore, Robert Will

Key skills – Board members:

Financial Management. Business skills. Administration. Secretarial. Social Welfare. Disability. Arts education. Formal education. Risk Management. Marketing. Event Management. Fundraising and Sponsorship development. Data Analysis. Public Speaking. Problem Solving. Team Leadership. Stakeholder Management. Data Visualization. Creative Writing. Mental Health. Innovation & Entrepreneurship. Inclusion. ICT. Engineering. Councillor.

Frances Macklin – KIC Director/Chair/Management Committee

Frances has worked in the cultural sector in Northern Ireland since 1991. After finishing university, she became involved in coordinating a broad range of events including the Celtic Film and Television Festival, Cinemagic, Foyle Film Festival, and the Bafta Production Awards. She programmed and managed Cinemagic International Film Festival for Young People for 3 years before becoming Festival Director and then Director of Operations. Frances moved to London in 2002 and formed Rubyblue, a cultural consultancy; her major client was the Paul Hamlyn Foundation who contracted us to design and deliver 'What's the Big Idea', a £3 million funding initiative for Northern Ireland. I am currently working in a consultancy capacity to help establish a new company based in Northern Ireland called Culture Trust.

Mary Mullan – KIC Director

Mary is also the senior Welfare Officer with KIC. Founding member and Management Committee member of Brook Children Together, supporting special needs young people in the Twinbrook area. Community activist in Twinbrook. Chair for the Colin Health For All management committee and on the Management Committee for St Lukes Childcare Committee in Twinbrook.

Mother of learning and physically disabled young man.

Lorraine Frew – KIC Director/Management Committee

Parent representative. Foster mum of 2 young adults with complex needs who benefited from participation in the project for several years. Lorraine brings a wealth of experience and knowledge of the community, disability, social care sector to the project.

David Bell - KIC TREASURER/Management Committee

Elected BCC Councilor 2014-19; BDC Transformation Committee; BCC Licensing Committee, Lyric Theatre Education Advisory Committee, SA&SG Management Committee, KIC Creative Assistant.

BSc Mechanical & Manufacturing Engineering (Queens) including Math, Further Math, Math and Computing, Production Management, Innovation and Entrepreneurship.

PGCE in mathematics with special educational needs and inclusion ICT.

Teacher, Head of Year

Joanne Atkinson – KIC SECRETARY/Management Committee

Over 24 years' experience in the secretarial field, from typing of documents to diary management, from organising events to attending and taking part in events and the usual general office duties, telephone, filing, photocopying, petty cash, working with spreadsheets etc. Qualifications are based around the secretarial field: RSA 1, 2 and 3 in both typing and word processing (some parts with distinction), RSA II Business Administration, GCSE English and Geography Grade C, Higher Level Accounts Grade D, also RSA Pitman Shorthand. Joanne has recently completed the following training courses: Person Centered Thinking Training, Positive & Productive Meeting Training, Child Protection, Understanding Learning Disability, Autism Awareness, Child Protection, Safe Guarding Children and Vulnerable Adults, Emergency First Aid, Moving & Handling, Being Effective Training, Time Management Training, Lotus Notes Training, Excel Training, Word Refresher Training, ITrent Workshop - Introduction to the L&D Module, Incident Management Policy Workshop, Health & Safety for Office Based Staff, Social Media Training, Infection Control, Top Tips When Using IBM Notes, Word, Excel and

Andrew Potter – Management Committee

Marketing, PR and Fundraising Manager Positive Futures, formerly Senior Marketing Manager BT, and Business Engagement Manager Culture Company 2011 – 2014. Andrew brings a wealth of skills and experience in Marketing, PR, Fundraising and business.

Nicholas Moore – Management Committee

Nicholas participated in KIC over many years as a young person. Nicholas is developing as an artist/musician and his input from personal experience is invaluable. Nicholas works full time in a supported workplace.

Rob Will– Management Committee

A&BNI Board Bank. Robert is a Business Analyst in the Operate Change Managed Services team at PwC, analysing client's business data to better understand the problems they face now, to identify ways of addressing these problems and improve into the future. Before joining PwC he completed a

PhD in medicine at the University of Cambridge, researching the evolution of bacterial infectious diseases, and has championed widening participation and mental health support in higher education institutions. Expertise: Data Analysis Public Speaking Problem Solving Team Leadership Independent Working Stakeholder Management Data Visualisation Creative Writing.

CORE STAFF

Company Manager	Grainne Woods
Artistic Director	David Calvert
Outreach Director (part time)	Jade Quinn

PART TIME OFFICE STAFF

Project Administrator	Rebecca Boyd
-----------------------	--------------

PART TIME WORKSHOP STAFF

Welfare Support Officers	Melissa Seawright Linda Laverty
--------------------------	------------------------------------

Creative Assistants	Megan Wilson Jamie McLaughlin Rhiannon Morgan Nigel Lockhart
---------------------	---

Key Volunteers	James Morgan Nicholas Moore Buddy Walker Joseph Fitzpatrick
----------------	---

INCLUSION:

Two KIC Board members have a disability. Two are Carers to adults with disabilities. One office staff member has a disability. One Creative Team members has a disability. 4 Female & 4 Male Board Members and range in ages from 26 to 75

In setting out our objectives and planning our programme of activities the KIC Board/trustees have given careful consideration to the Charity Commission NI's guidance of public benefit to ensure that our activities have helped to achieve the charity's purposes and provide a benefit to the beneficiaries.

Nicholas Moore
KIC Director

Nicholas Moore

L. Frew
Lorraine Frew
KIC Director

29/1/24

OUR PURPOSES AND ACTIVITIES

The purposes of the charity are:

To promote the benefit of the inhabitants of Northern Ireland without distinction of age, sex, race or political, religious or other opinions by advancing public education particularly but not exclusively by the provision of training in drama and performance skills.

HOW WE MEET PUBLIC BENEFIT:

The direct benefits which flow from our purpose include:

- The improved welfare of marginalized children, youth and adults through skills development, developing confidence and self-esteem, social skills, team working, decision-making skills, empathy, interests and ambition, self-awareness and social networks.
- The advancement of education through the delivery of programmes which compliment yet are additional to other service providers.
- Developing an equal society through highlighting the benefits and achievements of participants and developing empathy and understanding for marginalized members of society.
- Accessing personal development opportunities to marginalized individuals and communities, developing the confidence and skill to join mainstream activities.
- Reducing isolation of vulnerable members of society through the design of flexible programmes that meet real need and have lasting benefits.
- Enabling the personal development of participants to enhance their social skills and employability and developing employment opportunities.
- Encouraging enjoyment and achievement and supporting participants to maintain or improve their mental health, fitness and well-being.
- KIC is contributing to the development of social cohesion and a healthy civil society for all.
- KIC bring new energies into communities, energies that activate individual potential and discoveries in a fun, disciplined, liberated, safe space in which young people can be authentically themselves and communicate this in a celebratory manner.

WHO IS THE BENEFIT FOR

KIC's beneficiaries are:

- Children, young people, and adults with disabilities.

- Children and young people from designated areas of deprivation for example from interface areas, isolated and/or marginalized TSN communities.
- In order to enhance service provision in our target areas KIC provides training and mentoring to youth and community workers as well as leadership programmes for older youth – developing skills within community settings.

THIS IS EVIDENCED BY:

- KIC operates a policy of continual monitoring and evaluation – this is critical in developing our services and ensuring a high social return on investment.
- The benefits that come from our work are clearly evidenced through feedback from our user groups and external assessors.
- The benefits are also displayed through public performance and feedback is also gathered from our audiences.
- KIC produces a number of case studies each year. These are developed from 360-degree feedback involving participant, facilitators, guardians, teachers, social workers, and other professionals involved in the care of the individual.

WHAT WE DO:

KIC designs and delivers all its services with the following core values:

- Respect for people of all backgrounds and ability.
- Integration at the core of programming.
- Committed to learner led flexible programming.
- Focused on long-term benefits and impact for individuals/communities.

KIC is available to people who want to use physical theatre to change the community for the better. We provide high quality and high impact creative learning provision in some of Northern Ireland's most isolated and marginalised communities that fall under NI's policy for Targeting Social Need and young people who are classified under Section 75 of the NI act.

KIC implements creative programs in partnership with a variety of partners including community and voluntary groups, youth groups and schools.

Our participants have very diverse needs and require sensitive and high levels of support; therefore, we work closely with their guardians; carers, social workers, parents, foster parents, youth leaders, support workers and community police where needed.

2022 – 2023 PROGRAMME DETAILS:

Programmes from April to September 2022:

Outreach Projects:

- **North Belfast John Paul II Youth Theatre, Ardoyne**
8 workshops, 33 participants,
- **Divis Youth Club, Frank Gillen Centre, Divis**
7 workshops, 25 participants, 2 film/podcasts, 78 views
- **Newhill Youth Club, Upper Springfield Development Trust**
1 workshop, 16 participants
- **Falls Community Council, Belfast**
4 workshops, 27 participants

Schools Inclusion Programme:

- **Glenveagh Special School, South Belfast**
7 workshops, 6 participants, 1 film, 216 views
- **All Saints College, Andersontown Road, West Belfast**
4 workshops, 12 participants, 1 short film, 1684 views
- **Belfast Model School for Boys, North Belfast**
6 workshops, 35 participants

Core In-House Projects:

- **All Doors Open – disabled young adults transitioning from school (ages18-26)**
19 workshops, 12 participants, 2 films/podcasts, 411 views
- **Physical Graffiti – disabled, neurodiverse teenagers (ages 12-18)**
21 workshops, 16 participants
- **Staff training – inclusion and safeguarding**
8 workshops, 7 participants
- **Pivot – teenagers of all abilities from marginalised communities (ages14-18)**
9 workshops, 23 participants
- **HEdNI – Home Educated all ability teens (ages12-18)**
9 workshops, 13 participants, 1 performance, 20 audience

Partnerships/Collaborations

- **Blue Chevy – KIC's adult ensemble company for deaf/disabled/neurodiverse. Partnership with University of Atypical**
14 workshops, 8 participants, 1 podcast, 225 views
- **Brain Injury Matters – for adults with brain injuries**
17 workshops, 30 participants, 1 performance, 20 audience
- **National Theatre Connections – delivering for young adults for Lyric Theatre Belfast**
2 workshops, 20 participants

Programmes from October 2022 – March 2023

Outreach:

- **North Belfast John Paul II Youth Theatre, Ardoyne**

- 6 workshops, 8 participants, 3 short film/SM, audience 2217
- **Divis Youth Club, Frank Gillen Centre, Divis**
19 workshops, 16 participants, 4 performances, audience. 310
- **Newhill Youth Club – Upper Springfield Development Trust**
1 workshop, 15 participants

Schools Inclusion Programme:

- **Ashfield Girls School, East Belfast**
14 workshops, 29 participants
- **All Saints School, West Belfast**
14 workshops, 38 participants
- **Boys Model, North Belfast**
8 workshops, 70 participants

Core In-House Projects:

- **All Doors Open - disabled young adults transitioning from school (ages18-26)**
24 workshops, 11 participants, 4 performances, 240 audience
1 x Christmas party
- ***Physical Graffiti– disabled, neurodiverse teenagers (ages 12-18)**
24 workshops, 23 participants, 3 performances, 210 audience
1 x Christmas party

Partnerships & Collaborations:

- **Blue Chevy - KIC's adult ensemble company for deaf/disabled/neurodiverse. Partnership with University of Atypical**
6 workshops, 8 participants, 4. Performances, 75 audience
- **KIC/Lyric Theatre, Belfast - All Ability Youth Programme (ages12-18)**
23 workshops, 17 participants, 3 performances, 210 audience
- **Lyric Drama Studio – supporting professional development**
3 workshops, 14 participants, 1 film, 307 audience
- **Lyric Theatre School**
2 workshops, 12 participants
- **Queens University, Institute for Legal Studies (details below)**
6 workshops, 2 participants, 1 event, 50 audience
- **Beat Carnival – St Patricks Day Parade (details below)**
6 workshops, 8 participants, 1 event, 40,000 audience

Full Year Performance:

- Workshops: **306**
- Participants: **597**
- Performances/Events/Broadcasts: **34**
- Audience numbers: **47,136**

Highlights:

***All Doors Open:** a new creative learning programme for youth with learning/physical disabilities/neurodiverse disproportionately impacted by pandemic conditions. For

participants reaching young adulthood without access to activities supporting critical transition period from school to independence.

See Case Study

Producing their own performance work and performing in public, for the Bounce22 Deaf/Disabled Arts Festival, leading the Belfast Parade for St Patricks Day Carnival #voicesofbelfast, and on the Lyric Theatre stage for the KIC showcase events, brought a lot of joy while increasing participants confidence and confirming their achievements. Participants achievements were celebrated by diverse audiences and the group had standing ovations for **Bounce Deaf/Disabled and Neurodiverse Arts Festival 2022** and **Lyric Theatre KIC Spring Showcase** performances.

'The launch ended with a brilliant performance piece by Kids in Control; whose movement took in everything from Freddy Krueger to Queen's, We Will Rock You - very silly and very funny. A great way to kick off the festival's tenth year'.

Neurodiverse Review for All Doors Open Bounce23 Deaf/disabled Arts Festival, Belfast

***Queens University – Institute of Legal Studies**

KIC trained/delivered disabled actors for Queens University Institute of Legal Studies – for mock trials. To provide **training and experience for barristers in cross examination of people with disabilities who are victims of sexual crime** (shockingly 90% of sexual crime victims have a disability). This has recently been tested in England, but never been done before in NI before and is ground-breaking work. The mock trial was attended by the **Bar Association and Judges** who feel this is important developmental work. Feedback was excellent.

***All Saints School**

KIC worked with students to devise a short film **CARE DON'T SHARE #LivesNotLikes** A short film highlighting the dangers of inappropriate use of phones and social media. **Their film won the WBPB Translink Belfast Transport Hub Community Award.**

Project Report for Physical Graffiti

Beneficiaries:

The young people who participated in this 2022/23 programme were aged 12 to 18 years and faced a variety of disadvantages including:

- Learning disabilities
- ASD
- ADHD
- Down Syndrome
- Williams Syndrome
- Epilepsy
- Diabetes
- Visual Impairment
- Mobility issues
- Claustrophobia
- Developmental Co-ordination Disorder
- Osgood Schlatter Disease
- Global Learning delay

Monitoring of IMPACT

KIC used a variety of methods to measure and collect evidence:

- Photographic and film evidence to create a visual record of sessions and activities, including interviews with staff, participants, and parents of participants. The interviews accurately capture comments on the programme which we use for quotes and feedback for reporting. These records are also used for archive purposes.
- Workshop report forms are completed every session by the Welfare Officer noting staff observations of changes in the young people week-to-week. This includes how well participants interact with their peers and other staff, how they engage in workshops and participants' body language when they enter and leave the workshop sessions. At the end of the year, these reports give us a fuller insight into the journey participants have taken – where they may have struggled in the beginning and where they are flourishing now.
- Self-reported questionnaires are completed at key points throughout the year to gather evidence on how the young people feel in the moment. The questionnaires contain emojis to engage participants and help them describe how they feel.
- KIC uses 360-degree feedback from parents, guardians, teachers, and key social workers for a fuller understanding of the difference made in young people's lives. These conversations and quotes from other adults' participants see regularly, informs us of the changes outside the workshop and how the work we do at KIC trickles into their school and home lives.
- The Artistic Director and Welfare Officer monitor the progress of participants in each workshop session and, during weekly team meetings will ensure that we keep track of individuals' progress.
- Records of attendance are normally used as quantitative data for evidence of the consistency and enthusiasm that young people are showing for workshop sessions. However, from the frequent changes in Covid circumstances and the fear of sickness in our more vulnerable participants, regular attendance has been down in the past year.

The majority of our evidence for our three differences is collected through participant, parental and staff feedback. For 'reduced social isolation' we directly ask the young people if they have made new friends. We also noted staff observations on peer engagement and collect evidence from parents on interactions outside of workshops. For 'greater self-efficacy' we gather notes on participants' contribution of their own ideas to workshop sessions and their general confidence changes week-to-week. Evidence for 'increased happiness' is mostly taken from staff observations on body language as well as anecdotal evidence from parents.

PURPOSE & OUTCOMES:

The physical Graffiti Programme aimed to **Reduce Social Isolation**, develop **Self Efficacy**, and increase **Happiness**

Reduce Social Isolation

This programme aimed to support and encourage participants social engagement with their peers increasing emotional well-being and reducing isolation.

KIC has been a lifeline for participants in increasing social engagement and reducing isolation. Through regular workshops, it provided a safe space for children to come together, forging connections that have proven to be crucial for some participants. It has created a close-knit community where friendships thrive, extending beyond the workshop sessions, where many have formed lasting friendships, connecting through social media. Social time is now an integral part of the participants' KIC experience with attendees arriving early to connect.

For ChildA, who is home-schooled, these sessions have offered a vital opportunity to interact with peers outside his immediate household. Amidst the upheaval of moving houses during the year, the stability, consistency, and familiarity of the group have remained constants in his life, reducing potential stress. One significant outcome has been the friendship that has blossomed between ChildA and ChildB. Their bond was further strengthened during evenings at the Lyric Theatre, where they shared key scenes and supported each other backstage. This friendship exemplifies the power of KIC in fostering connections.

ChildC, an emerging peer leader, plays a pivotal role in creating a sense of belonging within the group. She understands the importance of helping new members integrate and actively builds friendships within the group. Her role is crucial in initiating interactions and ensuring that all participants remain engaged and involved in activities. Her personal growth within KIC is particularly noteworthy as, despite struggles at school, where she had no established friendship circle, she has thrived within the group, becoming a real team player and leader.

Quotes from parents and guardians:

- "My daughter for a long time has been very introverted and didn't like to leave her bedroom. Since joining KIC her social skills have skyrocketed, and she looks forward to her KIC sessions and meeting up with her new friends."
- "My child has become less anxious in social settings after the pandemic thanks to KIC. KIC provided her with a safe space to explore social interaction and engagement on her own."
- "He enjoys going to the workshops to meet up with his friends. KIC has taught him so much and he has made so many friends through the workshops."
- "My son has made friends within the group, showing consideration and appreciation for his peers. He feels accepted at KIC workshops. Having been rejected his entire childhood due to his disabilities, this acceptance is extremely important to his wellbeing."
- "My daughter wouldn't miss KIC. It is an oasis in a social desert."
- "KIC is a space of inclusion and where my daughter made friends and felt safe."

When participants were asked their 'favourite thing about KIC', many mentioned the team, "meeting new people", "making friends". 100% of members agree that their KIC team is important to them and 100% felt they have strengthened friendship/connections. When asked to describe their team 100% of the members used only positive words, many describing 'family' or words of admiration.

Greater Self-efficacy

This programme aimed to encourage enjoyment, motivation and confirm achievement enabling participants to achieve their personal best, raise their expectations and those others may have of them. Increasing confidence in their own abilities will encourage them

to take more control over their own lives and be confident in decision-making.

Through ongoing positive feedback, creative team support, and the joy expressed by audience members during live shows, KIC continues to foster self-efficacy and personal growth among its participants. It encourages them to set higher expectations for themselves, believe in their abilities, and make strides towards their personal best.

ChildF's journey within KIC is one of personal growth. She excelled in developing the story of "Lila," showcasing her creative storytelling talents and collaborative skills. She brought the story to life and demonstrated her natural affinity for strong roles. Her contributions created a sense of belonging within the group. This newfound self-assurance enables her to engage fully and make significant contributions during workshops. Her story serves as an inspiration to others, illustrating the potential for personal growth within KIC.

ChildG radiates a more positive body language, thanks to ongoing positive feedback from the creative team. This affirmation has helped him realise his capabilities, empowering him to explore his physicality and translate it into his on-stage character at the Lyric Theatre. His parents no longer need to accompany him into KIC, highlighting his increased independence and self-assurance.

ChildH's progress is evident as she now actively participates independently, a remarkable feat considering her initial challenges with anxiety. KIC has provided a supportive environment where she can thrive.

ChildI's development, despite profound learning disabilities and Downs Syndrome, showcases her newfound confidence and comfort within the group. She has become a confident team member and embraces physicality as a natural part of her participation.

Quotes from parents and guardians:

- "My child has gained self-confidence in her capabilities and interactions with others. Communication of her art, process and creative space have grown and positive responses from peers and teachers have helped improve how she sees herself."
- "My son gives his all the at the workshops, is made to feel he is the star, and he loves it. Through the years at KIC I see him becoming more independent and having so much pride in himself. He is more open and is confident that he can achieve any instruction that is given to him and will always give his best self. He has also become so much more independent, going into the workshops and to performances with so much confidence and he wants to do a lot more things by himself."
- My son has a sense of accomplishment and pride in himself. He now knows that he is capable of acting. For him, being on stage and managing his own behaviours and tics is a level of independence that he has never been capable of doing. If I'm unable to drive him to sessions, he can now independently ride in a taxi confidently!"
- My daughter is now able to plan and carry out the simple tasks independently."

100% of participants agree that they are more able to express themselves, 88% agree they are more able to make decisions about their own lives and 88% agree they are more independent.

|

Increased happiness

Many young people entering KIC arrive unhappy and anxious with low self-esteem. They often have had poor experiences of joining groups and programmes. KIC ensures that our workshop space is welcoming, safe, and enjoyable at all times and everyone feels a part of the group.

Many young people arrive at KIC with feelings of unhappiness, anxiety, and low self-esteem, often due to poor previous experiences in group settings. Through the support of staff and peers, engaging activities, recognition of individual and group achievements, and successful performances, KIC has created an environment where happiness thrives, and participants find a profound sense of belonging and accomplishment.

ChildJ has played a pivotal role in creating a welcoming atmosphere within the group. She has emerged as a natural leader, setting an example for others on how to engage in activities and derive enjoyment from them. Her feedback on new activities and desire to build on them have added a layer of excitement and enthusiasm to the group. Her inherently happy disposition has been instrumental in helping new members integrate into the group and her genuine interest in the lives of others has contributed to a sense of happiness and belonging.

KIC encourages participants to express their interests and ideas freely, emphasising the value of their input. This empowerment injects a great deal of energy into the group, enhancing their overall enjoyment, fulfilment, and happiness. Sessions incorporate warm-up games and ChildK has excelled in these challenges, becoming an essential member of winning teams. His ability to grasp tactics and support fellow team members has boosted his confidence and contributed to his happiness.

KIC provides numerous opportunities for participants to showcase their work, enabling feedback loops among peers and the creative team. This exchange of feedback adds to the group's happiness as they respond to one another's achievements, both individual and collective. The sense of recognition and appreciation enhances their overall sense of happiness.

The pinnacle of happiness comes from the achievement of successful live performances. The happiness radiating from the performers is palpable, and the sense of accomplishment is shared not only by group members but also by their families and friends, who beam with delight and pride.

Quotes from parents, guardians, and participants:

- "My son absolutely loves KIC. It's so important to him. It helps him see that there is a life and future for him."
- "My son absolutely LOVES being part of KIC! It is super important to him. It is the ONLY place he feels accepted. He does not like to miss a Saturday."
- "My child absolutely loves KIC. She looks forward to every workshop."
- "My child loves attending KIC."
- "He is so happy and it's amazing as a parent to watch my son grow."
- "I love KIC it has helped me deal with a lot of things in my life that I had stopped doing and I have made lots of new friends and met people that I might not have met before."
- "KIC workshops help me reduce my stress because it makes me happier"
- "I love KIC". It makes me happy."

100% of participants agree:

- they enjoy KIC workshops
- they feel good after KIC workshops
- want to continue with workshops.

OTHER IMPACTS:

- Teamwork skills have increased and they work really well as a group, supporting each other, sharing ideas, and listening and enjoying the ideas of others.
- Disabled group members take initiative to help look out for their peers - attentive to each other's needs. In particular one participant with mobility issues is now supported by her peers to move around the workshop space and in developing her role in performance. This growing empathy and understanding of the needs of others has been a joy to watch and ensures everyone feels valued within the group. Everyone has learnt to recognise and value small achievements which can be huge for the participant.
- Leadership skills have increased for some participants, and we are aware that this is enhancing other areas of their lives where some had previously felt isolated and detached.
- Articulation and communication skills have increased, we see this within workshops but also in the social times around workshops. One participant doesn't communicate verbally but her physical presence has really grown, and she now will make her way into the center of the group during social times, her body language shows her engagement, and this is acknowledged by others who feel her presence, participation and enjoyment.
- Physical/Motor skills have increased and individuals have a real willingness to push themselves to achieve participation levels some previously felt were not possible.

WIDER CHANGES:

KIC's connection with parents is stronger than ever - and their support of the project is fantastic. They all took turns to support the group backstage at the Lyric Theatre and really enjoyed the excitement of their young people performing, and the camaraderie. It was great to see them feeling part of the event and feeling real pride in the achievements of their young people. Other groups performed at the Lyric too and meeting and interacting with diverse new young people was very exciting for all involved.

- For many guardians of participants KIC provides a few hours for them to relax, confident their young people are safe and happy. Some parents go together for coffee and real friendships seem to be developing that are supportive and understanding of the challenges they share as parents of vulnerable children - they've made their own connections, and this has reduced isolation for them too.
- previously many guardians of young people coming through Physical Graffiti and who were approaching adulthood were concerned by the lack of services post KIC, and that they would lose the confidence, skills and friendships they had formed. KIC has been able to establish an on-going program for 18+ called All Doors Open. This has developed as a direct result of BBCCIN securing KIC core youth programs over the years and has reduced anxiety of parents and participants that they would lose connections to creative projects that enhance their lives.

Physical Graffiti: CASE STUDIES

ChildL, who has Down Syndrome and mobility issues, has made remarkable strides in her participation and enjoyment within the dynamic ensemble of KIC. Her growth is evident in her expanded range of physical expression during ensemble activities. She now conveys a wide array of emotions through facial expressions within physical theatre narratives. ChildL derives great joy from the social aspects of group meetings, although she rarely communicates verbally. She comfortably observes others and actively engages in group discussions during workshops. Notably, she now enters the workshop room independently, demonstrating growing confidence and independence. Her commitment to attending KIC is evident as she insists on confirming her attendance weekly via her parents on the parent WhatsApp group. They have shared deeply moving testimonials, emphasising how KIC has provided her with a sense of belonging and creative challenge within a supportive peer group. ChildL's journey, from being non-verbal with complex needs to becoming fully engaged in her unique way, underscores the nurturing and accepting environment fostered by KIC. Her increased participation and willingness to accept support from her peers reflect the trust and sense of value she has discovered within the group.

ChildM - "KIC has helped my child to gain the confidence to speak out more and now she is willing to voice her own opinions. Since joining, she is a totally different girl, has gained a lot of confidence that is helping her to achieve things outside of KIC (in school she is now Head Girl and doesn't think twice about getting up in front of the school to speak or greet visitors when they arrive). We can leave her off and she knows that she is ok staying on her own. In the beginning I had to stay at sessions with her, but she now wants to do things on her own. She loves being part of KIC and loves the people, the new friends that she makes. KIC has taught her new ways and means of doing things and it's lovely to see her use these new skills in life away from the group. KIC is very important to her and gets very frustrated when she has to miss some sessions due to sickness. She cares a lot about the leaders and other participants.

ChildN - "My son has come on so much with his communication, through KIC he now feels comfortable to voice his opinions and get involved in conversations. KIC helped him show his abilities and forget his disabilities. Through his involvement he knows he can do anything. KIC is great for his independence. He can meet a group of friends without parents and thrive. My son loves every minute of KIC, he feels so comfortable and enjoys his time with all the group, taking part in pieces of work they have put together. He has shown a great appreciation for the workshops and his attendance has developed the skills he needs. He loves taking part in most activities and nothing will get in his way."

RESERVES POLICY adopted 24/1/22

The Kids in Control Board of Directors have resolved to establish reserves for future needs.

Kids in Control company is limited by guarantee, and it has no share capital. As a charitable organisation as well as a limited company Kids in Control must meet the requirements of expending funds in line with charitable objectives, as well as maintaining a solvent company that can meet unforeseen circumstances. To this end and as part of the planned strategic development planning, Kids in Control has a reserves policy that outlines the rationale for holding reserves.

Kids in Control will aim to accrue and maintain at least 3 months of operational overheads and programming costs to allow it to deal with a gap in funding, loss of funding or other major shocks. Although Kids in Control may not be in a position to maintain this level of free reserves at a particular point in time, it should strive to achieve a reserve that equates to this level.

At the time of adopting this policy Kids in Control does not have the level of unrestricted reserves identified as required and is planning to implement the reserves policy throughout the 2023 – 2024 financial year to actively address this situation.

Copy on request.

CONFIDENTIAL



Parental Questionnaire
All Doors Open Project

All Doors Open was funded by George Best Belfast City Airport Community Fund.

Kids In Control is core funded by Arts Council of Northern Ireland & Belfast City Council. It is a requirement of all funders that KIC monitors the impact that the project has for participants in order for us to capture the benefits as well as learn and improve what we do.

Guardian/parent name: [REDACTED]

Participants Name: [REDACTED]

Participants Age: _____19_____

Does participant have a disability?

Please explain:

[REDACTED] HAS SPINA BIFIDA AND HYDROCEPHALUS _____

Participants Postcode: [REDACTED]

How long has your young person been involved with KIC? 2 YEARS

Looking back over the last year, how much progress have they made in the following areas.

Can you give us an example from the participant's everyday life as to how KIC workshops have helped with their progress?

Communication Skills				
1 No Progress	2 A little progress	3 Some progress	4 A lot of progress	5 Significant progress
KIC this year has gained ██████ the confidence to speak out more through giving her a speaking part in the Spring Showcase and she is willing to voice her own opinions				

Social Skills / Ability				
1 No Progress	2 A little progress	3 Some progress	4 A lot of progress	5 Significant progress
██████ for a long time has been very introvert and didn't like to leave her bedroom since joining KIC her social skills have sky rocketed and she looks forward to her KIC sessions and meeting up with her new friends.				

Confidence Level				
1 No Progress	2 A little progress	3 Some progress	4 A lot of progress	5 Significant progress
Since joining KIC as mentioned before ██████ is a totally different girl she has gained a lot of confidence that is helping her to achieve things outside of KIC too ie in school she is the Head Girl and doesn't think twice about getting up in front of the school to speak or greet visitors when they arrive				

Self Esteem				
1 No Progress	2 A little progress	3 Some progress	4 A lot of progress	5 Significant progress
██████ self esteem has changed a lot but there is still a lot more that needs to be done I feel there is a lot more in ██████ that KIC are gradually bringing out in her.				

Physical Ability				
1 No Progress	2 A little progress	3 Some progress	4 A lot of progress	5 Significant progress
<p>Due to [REDACTED]'s disability there are some restrictions on [REDACTED]'s ability but KIC have taught her new ways of doing things ie instead of looking at the floor for markers ([REDACTED] can't see the floor due to her sitting position) KIC have taught her to use the lights on her arms as markers. In days gone by [REDACTED] would have thrown in the towel and gave up but KIC are showing her that there are other options and methods of doing things.</p>				

Independence				
1 No Progress	2 A little progress	3 Some progress	4 A lot of progress	5 Significant progress
<p>We can leave [REDACTED] off at KIC and she knows that she is ok staying on her own with at the beginning I had to stay at a few sessions with her but she is getting there now at wanting to do things on her own</p>				

Does your young person enjoy being part of KIC?
<p>[REDACTED] loves being part of KIC she loves the people and the new friends that she makes. KIC has taught her new ways and means of doing things and it is lovely to see [REDACTED] use these new skills in life away from the group in her every day life.</p>

Is KIC important to them?
<p>KIC is very important to [REDACTED] she gets very frustrated when she has to miss some sessions due to sickness or tiredness and worries about letting the team down. [REDACTED] cares a lot about the leaders and other participants</p>

Would your young person like to continue coming to our workshops?

Absolutely [REDACTED] would be devastated if KIC ended. It has helped her so much and there is still lots more things for [REDACTED] to achieve and progress in.

Has your young person shown more interest in the arts since participating in KIC projects?

[REDACTED] has always had an interest in the arts but since joining KIC she now sees that she can be part of it all too that just because she is in a wheelchair she can still get up on a stage and perform just like her idols

Please feel free to make any additional comments in the box below:
e.g. how KIC has enabled you to have time to yourself

We as a family are so grateful for the KIC team. To watch [REDACTED] progress in how she has helped us so much because for years we watched [REDACTED] decline after being bullied in school. There is still a lot inside [REDACTED] that needs to come out and shine and I don't think there is anyone better for the job than David and the team. [REDACTED] has been going for counselling twice a week for 3 years but in the 2 years [REDACTED] has been with KIC she has opened up more.

[REDACTED] is leaving school in a few months which will be very hard for leaving somewhere she has been going to since she was 3 years of age but knowing that she still has something familiar with KIC to keep continuing will help her through it.

We as a family have made new friends also with parents and even the young people in the group we have grown very fond of and attached to.

KIC are an extended branch of our family and we are very grateful and thankful for them.

THANK YOU!