

Annual Report & Financial Statements

1st April 2023 - 31st March 2024

23
24





One Day Study

2021

Room 64
HS 6 T

Contents

A letter from our Chair.....	4
Our Trustees' Report.....	6
OUR PURPOSE AND VALUES	8
WHAT WE DO	9
WHY WE FUNDRAISE.....	9
OUR YEAR IN REVIEW.....	12
<i>Our Community Hub.....</i>	<i>12</i>
<i>Our Stories.....</i>	<i>16</i>
<i>Our Impact in Numbers.....</i>	<i>19</i>
<i>Our Impact in Detail.....</i>	<i>20</i>
OUR FINANCES.....	24
THE YEAR AHEAD.....	26
<i>Our Ambitions.....</i>	<i>26</i>
<i>Our Strategic Plan.....</i>	<i>28</i>
OUR GOVERNANCE AND MANAGEMENT.....	30
STATEMENT OF TRUSTEES' RESPONSIBILITIES.....	33
Independent Auditors' Report.....	36
Financial Statements.....	40
CONSOLIDATED STATEMENT OF FINANCIAL ACTIVITIES.....	42
GROUP AND CHARITY BALANCE SHEETS.....	43
CONSOLIDATED CASH FLOW STATEMENT.....	44
STATEMENT OF ACCOUNTING POLICIES.....	45
NOTES TO THE FINANCIAL STATEMENTS.....	48

A letter from our Chair



I am pleased to introduce the annual report and accounts for Learning Disability Network London (LDN) for the year ending 31 March 2024.

At LDN a dedicated team of people led by our Chief Executive, Gabby Machell, work to ensure that people with all types of learning disabilities are safe and healthy and live good lives. We support people of all ages and, in many cases, have been supporting individuals for decades.

What does living a good life mean? We believe it means working to ensure that people with learning disabilities are valued as equal citizens, ensuring that they can make full use of their community and are able to make decisions about their lives at every

opportunity, no matter their level of disability.

We can only do this by continually developing as an organisation; ensuring we are living by the values we set ourselves. These ensure that the people we support:

- are included as a valued part of the community,
- can make decisions and choices about their lives,
- are treated with dignity and respect as valued individuals,
- can achieve their dreams and aspirations.

Established for over 60 years, in April we launched our latest three year strategic plan, setting out how we will put our values into practice. This includes the establishment of a new quality and service development department which is helping to evolve a continuous improvement process across our whole organisation.

In July we re-instated our first Feedback Festival since the pandemic. The festival is an opportunity for people we support and our staff to tell us their lived experience of being part of LDN to help us continue to shape the organisation.

Working in the community is a core part of our offer. We fundraise to enable us to go above and beyond statutory commitments, to enhance the lives of those we support, to support families in the early diagnosis for their child and to reach adults who receive little or no government funding. This year we expanded our Community Engagement and Family Services teams enabling us to do more and reach more people with learning disabilities across London.



We also continued to invest in our Community Hub. The Hub, which was established in 2022 on the Harrow Road, Westminster, increased the range of activities and workshops it provides, teaching crucial life skills and helping people with learning disabilities to play a bigger role in their community. As well as these activities, the hub helps to combat the social isolation that many of those with learning disabilities feel.

The year also saw our first "Spotlight On" evening – an event series focussing on issues that affect people with learning disabilities, amplifying the voices of the people we support. Our first event focussed on the abuse of people with learning disabilities, including in assessment and treatment units. We were thrilled that it sold out, drawing attendees from across the country and highlighting the need for personalised support within people's communities. Our second spotlight event took place in June, this time focussing on what success can look like for people with learning disabilities.

We are grateful to those who supported us in our fundraising and other community activities in 2023/24:

- 4C Group
- Ainah Leval
- Arshad Ali
- Banijay Group
- Clifford Gundle
- Co-op Local Community Fund
- Department of Business and Trade
- Dermot Quinn
- Dr Martens Grassroots Foundation
- Emma Russell

- HFMC Wealth
- James Stafford
- Lamees Ali
- Maida Vale School
- Martin Prozesky
- Michelle Cater
- Sally Perry
- Serco Foundation
- Talan
- The Paddington Partnership
- Virgin
- Vodafone

... and all of those who did not wish to be identified. And a special thanks to everyone who supported our Spotlight On and Play for Inclusion events.

Without their support our voluntary work would not have been possible.

It continues to be a difficult economic climate for charities, and we recognise how important it is for us to diversify our fundraising. This year we are working to grow our corporate partnerships, developing creative and meaningful opportunities for businesses.

Our 61st year has been a privilege to oversee. I'm proud to chair an organisation that refuses to stand still, that strives to continually improve the lives of its staff and the people it supports. I'm excited to see what the coming year brings.

Lynne Peacock

Chair of the Board



Our Trustees' Report

(incorporating the strategic report)

OUR PURPOSE AND VALUES

WHAT WE DO

WHY WE FUNDRAISE

OUR YEAR IN REVIEW

Our Community Hub

Our Stories

Our Impact in Numbers

Our Impact in Detail

OUR FINANCES

THE YEAR AHEAD

Our Ambitions

Our Strategic Plan

OUR GOVERNANCE AND MANAGEMENT

STATEMENT OF TRUSTEES' RESPONSIBILITIES



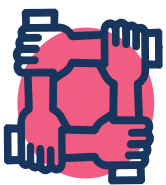




OUR PURPOSE AND VALUES

We work to ensure that people with learning disabilities are safe and healthy and live good lives; that they are valued as equal citizens, can make full use of their community and are able to make decisions about their lives at every opportunity, no matter the level of their disability.

Our values run through everything we do and help us to fulfil our purpose. Our services are delivered on the principles that the people we support:



Are **Included** as a valued part of the community.



Can make **Choices** and **Decisions** about their lives.



Are treated with **Dignity** and **Respect** as valued individuals.



Can **Achieve** their dreams and aspirations.

WHAT WE DO

Learning Disability Network London Ltd (LDN London) is a registered charity which has been providing facilities and support for people with a range of learning disabilities and their families in London since 1962. The objective of LDN London outlined in the Articles of Association is to relieve the charitable needs of people with a learning disability and their families and carers and to promote equality and diversity.

We have developed a wide range of services to meet this objective, including registered care, supported living, domiciliary care, community support, short breaks and children and family support services.

There are no restrictions to access the services we offer, although our work is for people with learning disabilities and their families within the Greater London and nearby areas. We currently operate in 5 London boroughs and have significant experience in supporting people with disabilities, including people with complex needs and profound and multiple disabilities.

We place special emphasis on promoting family relationships as this is crucial to delivering successful services. We also provide family support and other services for children.

WHY WE FUNDRAISE

We fundraise to tackle social isolation, the vulnerability of loneliness, the impact of poverty, exclusion from the workplace, homelessness, exposure to hate crimes and poor health outcomes for people with learning disabilities.

For a person with a learning disability, feelings of being disconnected from the world, lacking human contact and living with a sense of isolation can be experienced every day, every year, for a lifetime.

We fundraise to provide support and opportunities, which enable us to listen and respond through projects to tackle the inequalities people with learning disabilities face. We want to give these people the opportunities most people who do not have a learning disability take for granted: to have a home, a job, access to quality healthcare, chances to socialise and have good relationships.

The list is endless, but our ability to help is limited by the funding we receive.

As a charity we raise voluntary funds to deliver beyond statutory requirements. This enhances the lives of those we support and those who receive little or no funding or support through our contracted services. This is why our fundraised activities are focused on our Family Services and our Community Engagement

LDN London is committed to creating lasting social value by providing essential services for people with learning disabilities in London. We understand that true social value extends beyond our services and encompasses broader benefits for the local and wider community. We are committed to positive change, enriching lives, strengthening communities, and safeguarding the environment for current and future generations.

We consult with a wide range of people about what we should be doing to develop our services. We talk and listen to people with learning disabilities, their carers and family members, as well as local authorities and other partners. This ensures our services make a difference to people's lives and are what adults and children with learning disabilities want and need.

We set aims and objectives within six strategic pillars which form the foundation of our business planning process. These are continually monitored and re-evaluated through our management and committee structure and various consultation groups and events.

We know our aims and objectives cannot be achieved without resources and are committed to improving our financial performance and recruiting and retaining high quality and well supported staff.

Hubs, which are aimed at closing the gap in provision.

In our 61 years we have learnt that investing funds in additional support, beyond the statutory provision, works. We have been fortunate to receive a return on our investments which we have put straight back into community engagement and family programmes.

We have seen first-hand the success of this work, and in particular the direct impact on the lives of London's learning-disabled population. We want and we need to do more to reach the many people with learning disabilities who do not get or cannot find support – some of the capital's most vulnerable people.

LDN London has a small team, which organises fundraising events and employs a manager, who oversees grant and trust applications as well as corporate support and funding. We have a charter in which we commit to high standards when raising funds. This charter is published in full on our website.

All who are kind enough to support us can be reassured that we do not use intrusive fundraising practices and we value every penny provided to us to fulfil our ambitions for learning disabled Londoners. No complaints have been received in respect of fundraising.



Talan UK, a consultancy company working with businesses and the public sector, recently chose LDN London as its London charity of the year.

Robert Precious is a member of the team at Talan UK. He has volunteered at LDN London and ran the Brighton Marathon to raise money for our Community Engagement Hub. He talked about the team's experience so far:

"My experience of volunteering has been really positive. Everyone that's volunteered at the Hub has said that they've enjoyed it and a few people have already been back. It's important that people return so that the community members get to see similar faces and we build a relationship.

The main thing the team have got out of it is an appreciation of the difficulties that people are going through. You don't often hear about the struggles of adults with learning disabilities. It also becomes more personal when you speak to people and see what they're going through and just being around them for a few hours. It gives us that more personal appreciation of what's going on.

Talan wanted to choose a smaller charity, and to work with a different group of people to some of the other charities we help. It allows people in our company to see a different perspective.

For example, Laurence and Emma from LDN London spoke to our company about learning disabilities and autism. Our executive team said that it had been eye-opening. There are some issues that people might understand easily, like homelessness, but lots of people don't know about learning disabilities. They might not

know about the difficulties people face every day when they are living independently.

You also don't get an appreciation of how unique everyone's situation is unless you're seeing it or speaking to them. If you just hear it on the news, then you're not going to appreciate it in the same way as meeting people in person.

The Hub has also given us flexibility. The way that our company works means we don't know the people who will be available for volunteering, because the team could be on a project within a week. Without that flexibility we wouldn't be able to have the relationship we do.

Running the Brighton Marathon was a really good experience. It was quite difficult to do all the training, but it was great when I finished. I'm proud of myself now. I also did something a bit different: When requesting donations, I asked for people to give me songs for my marathon playlist. I got songs from everyone at the Hub and half of the playlist was from people from LDN London. There were 80s hits, as well as The Cheeky Girls – a big mix.

It was also good because I got to share the message. Raising awareness was probably the most useful part of it. I told people back in America and some people in a different autism charity I used to volunteer with. Having been to the Hub, I'm very happy that the money will be going towards that. I hope it keeps it going for much longer.

By getting involved at LDN London you can make a real impact in people's day to day lives in a way that you might not volunteering at other charities. It's more personal. You learn about autism and learning disabilities, but you also learn about yourself and might change your own ideas. This area is also very underappreciated, and we need more people to be aware of it and to help."



OUR YEAR IN REVIEW

Our Community Hub

This year our Community Hub team has held 225 sessions for adults who get little or no statutory support. The team create a safe and supportive place for people to learn and do the things they want to.



"I like coming to the Hub because it's not strict, you treat us like adults. Other places treat you like children and call us boys and girls."

Kim

"LDN has been a safe place for me to go to."

Sandra

“I am keeping fit with the dance sessions and the art sessions make me more confident.”

Ade



“The sessions on energy saving made me do things differently at home.”

Mary



‘LDN has been helping me on some of the down days. They talk to me. They listen.’

Steve



“The art sessions are very relaxing. I really like the dance and exercise. I never did exercise before.”

Camila



Stay Healthy

Healthy body: Inclusive sports

We've held many sessions at The Hub and in the community, so members have the chance to try lots of activities to see what they enjoy. From yoga, to boccia (which is like bowls), football and our very popular dancing sessions, there have been activities for everyone's fitness and confidence levels.



Healthy relationships: SASH sessions

People with learning disabilities have romantic relationships just like other people. Many long for a girlfriend and boyfriend, and others want to make friends. The organisation SASH have been running regular workshops at The Hub to provide information and advice, including on consent, sexual health, and developing positive relationships.

Healthy Minds

Our regular mental health sessions this year have included learning more about emotions, and how to manage your emotional wellbeing. Another highlight was celebrating autism awareness day, with a presentation from a photographer, Emily June Smith, who is autistic, where everyone learned more about autism.

Be Safe

Safe with money



Managing money can be difficult for people with learning disabilities, and they are also vulnerable to being the victims of crime. The Financial Conduct Authority have run workshops with members giving them advice about how to avoid scams and be safer with their money. Hub members have told us how valuable these sessions have been for them.

Safe in the community

Safety is a vital part of our role every day. With a visit from a community support officer members learned about being safe locally and learned tips. As well, the community team has run training for Metropolitan Police recruits on learning disabilities and neurodiversity, so people we support get the help they need.

Live Well

Supporting people to connect, to be part of the community and have their voice heard.

Being heard

We held a range of workshops with My Vote My Voice to make sure people with learning disabilities knew how to vote before the Council elections and the general election. It's vital they can participate in democracy. Hub members also talked to LDN London trustees about their experience of The Hub at the LDN Board strategy day, and gave feedback on how it could be developed.



"It was great to get feedback direct from people who use our services in this semi-formal session. With reference to our strategic pillars, we discussed how services could be improved and developed." – Jeff Mendzil, Trustee

Community: trips in time with The British Museum

The British Museum has become a second home for us recently. Curators have visited The Hub to show rare historical objects, including instruments and masks. Hub members have been on inclusive after-hours tours, including an event where helpers at the music explained difficult terms. As well, members have enjoyed trips to local inclusive classical concerts in Marylebone, and a tour of Westminster Abbey.

Connection: Men and Women's Groups

We have been pleased to begin men's and women's groups at The Hub this year. It has been a fantastic way for members to connect and feel safe learning about different topics that are more personal.



Our Stories

LDN supported Audie to follow his dream of being a rapper

Audie has a learning disability and gets support from LDN London. He is also a rapper and songwriter.

Audie has often found it hard to speak and talk with people. He has also struggled with his self-confidence.



One day LDN's support worker, Marcin, heard Audie rapping the song 'Drop it like it's hot' by Snoop Dogg. He thought it sounded brilliant. Marcin asked Audie if he would like to write his own rap song. Audie said he would.

They began to work on lyrics together. Each word took time. Together they spent two weeks writing the first line and practising it.

Eventually they wrote a whole song, which was called Big O. Audie's performing name is Big O and the song is about him and his daily life. He talks about his favourite breakfast cereal and the rappers he likes. ("If you wanna know something about Big O, my flow eats Snoop Dogg for breakfast like Cheerios.")

Audie also talks about his support team in the song: "I chase my dreams until they became real, thanks to the whole LDN support workers team. I'm always myself, please don't get me wrong... My nickname is Big O, with my golden microphone."

When they finished writing the lyrics Marcin and Audie picked the backing music. They recorded the song on a microphone that they set up in Audie's bedroom. Some of his friends at Piper House also featured in the recording.

Since then, Audie has performed his rap, including for an audience at his local Church. He was nervous, he says, but he enjoyed it.

Audie and Marcin also made a music video for his song. LDN has shared it on social media and told Audie's story. Audie has been proud that people want to listen to his music.

Writing a song has given Audie more confidence and self-belief, he says. It has also helped with his ability to communicate and express himself. When he is performing, he raps clearly and confidently.

You also notice that he has a big smile on his face. It's clear how much Audie loves making music. Audie is already working on his second single, called 'Freeway'.

Marcin and the team at LDN London helped him to believe in himself so that 'his dreams became real'. Marcin told us *"LDN is not like a company or an organisation, it is like a family – They care! LDN helps people find a purpose in life and achieve something."*

LDN supported Alex, who has autism and ADHD, after the death of his guardian



Alex is 12 years old and has autism and ADHD. His grandparents, Benjamin, and Mary, looked after him from the age of 6, because his parents were living with substance misuse and mental health problems, and this made it difficult for them to look after Alex.

When Alex's grandma died, the family was devastated. Alex missed her and found it difficult to manage his emotions and grief.

As well as coping with the death of his wife, Benjamin was also now solely responsible for looking after Alex. He struggled to cope.

There is lots to manage for the parents and guardians of children with SEND. Alex needs specific help with his autism and ADHD. Benjamin now had to organise this.

Benjamin didn't know what rights Alex had or what he could ask for. He had never spoken to people in the SEND system before. He wasn't used to using email and he found it difficult to communicate with Alex's school.

He was also struggling with money. His wife had looked after the benefits Alex got. The family didn't have much money and Alex needed essential items for school.

Benjamin came to LDN London for support.

Our family team arranged for Alex to talk to a counsellor to get the emotional support he needed.

The team helped Benjamin to manage his money and the complex financial situation. They helped him to apply for his blue badge parking certificate. They made sure Benjamin got the right support.

The team helped him feel more comfortable talking about his own needs and taking care of his own

emotional wellbeing. They also supported the whole family. They assisted his other adult grandchildren to open bank accounts and apply for college courses. This reduced the pressure on Benjamin.

LDN arranged for Alex to have a mentor at school and extra counselling. They applied and won grants to get essential equipment for Alex to use in school, including a laptop. They also made sure Alex's teachers understood what he needed, helping liaise with the school. His teachers know about his needs and provide support with his ADHD. They give him regular breaks in the classroom, and he can use fidget toys, which help with his concentration.

Alex is now better able to manage his emotions and feels more settled. He still misses his grandma, but he gets more help when he finds this hard to deal with.

The family continually say that LDN made a huge difference to their lives.



LDN London supports Dayana to learn life skills

Dayana is 45 years old and has a learning disability. She moved to London in 2006 from the Caribbean.

At first, she stayed with family and friends, but over the past few years she has needed more support. Dayana moved into supported living accommodation with LDN London in 2023.

Dayana lives in a shared flat, although she is quite independent.

Dayana first came along to a session at the Hub with a flatmate because they wanted to get out of the house. The support team had told them about the Hub, so they thought they would visit to give them something to do.

When they first attended Dayana mainly watched the activities, rather than participating.

After a while, she came to more groups on her own. Her flat mate moved away from the area, but Dayana kept coming and she now attends almost every session. She spends time chatting to the team before the others arrive, and she has made lots of friends.

Dayana told us that she really enjoys coming to the

Hub, and particularly likes the sessions where she learns something new. She has learnt a lot from the workshops about health and money. She also enjoys dance and exercise classes, but she finds the skills sessions most helpful and relevant to her life.

Learning life skills, including budgeting, helps her to manage her life better.

Dayana wants to be able to manage her money better and would like to save up. She said she learned a lot from our money management sessions with graduates from the Financial Conduct Authority and the team at LDN London.

Dayana said that she would like to do more sessions on managing her money. The team is planning more of these.

Dayana comes along to the Hub almost every day and attends church every Sunday. These are the two places in her life where she feels comfortable socialising with friends and meeting new people.

Dayana said: *"The Hub is a great place for anyone with a learning disability to come to - you really can learn new things here."*



Our Impact in Numbers

5

Boroughs



134

Children supported by Kids Can Achieve



11,180

Weekly support hours for 199 adults with learning disabilities living in our housing services



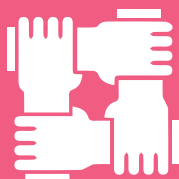
80

Adults with learning disabilities accessing our LDN Community Engagement Hub



824

Weekly outreach support hours for 54 adults with learning disabilities



3,195

Training sessions completed by staff over the last year



160

Families supported by our Family Service Team



502

Members of staff



Our Impact in Detail

Adult Housing

We operate 3 registered care homes in Westminster, with dedicated staff teams benefitting 13 adults with learning disabilities who need 24-hour support. The people who use our services are supported to ensure their individual needs, wants and wishes are met in a homely environment at the heart of their community.

We provide a range of secure tenancy supported housing accommodation services in Westminster, Camden, Islington and the Royal Borough of Kensington and Chelsea, which includes one-bedroom flats and shared living flats. The tailor-made support packages vary from 24-hour on-site support to the more traditional supported housing outreach model.

At year end, 11,180 weekly support hours were being provided to 199 people across all our adult housing services (12,220 hours to 195 people in 2023).

All supported housing and registered care tenants have an individual budget, each with a clearly identified level of support hours being provided and transparent associated costs.

Ensuring our adult housing services are fully utilised continues to be a top priority. The average void / vacancy rate across our housing services remained at 10% during 2023/24 (10% in 2022/23) with the year end void rate reducing to 8% (10% in 2022/23). There has been a total of 32 moves during the period (35 in 2022/23) in line with our housing strategy in responding flexibly to individual's housing wants and needs.

Short Breaks

We provide a Short Breaks service across 2 sites in Westminster and Kensington and Chelsea. This service provides planned and emergency building based **respite places benefitting up to 16 adults with learning disabilities at any one time, as well as up to 150 hours per week of outreach support.**

Outreach

Our LDN4U outreach teams and other supported housing hubs have continued to provide tailor-made packages of floating support to people living in the community.

At year end, 824 weekly support hours were being provided to 54 people (808 hours for 60 people in 2023) with individual packages ranging from 3 hours per week basic tenancy support to more complex and inter-agency support packages. This includes support being provided in Westminster, Camden, Islington and Kensington and Chelsea.





Community Engagement Hub

Our LDN Community Engagement Hub is a place for people with learning disabilities to learn life skills, socialise and be more included in their community. We offer advice and run workshops for people who get little or no support from other agencies. We also raise awareness and educate the wider community about learning disabilities and autism, which strengthens local connections and encourages people and organisations to be more inclusive.

We run workshops and advice sessions at the Hub on topics that are important for people's health, wellbeing, and independence. We cover subjects including how to be healthier, budgeting, personal safety, employability, digital skills, mental health awareness, sexual health and relationships, sports, voting, sustainability, as well as the occasional party and fundraising event. We also work with local organisations who run some sessions for us.

In 2023/24 the Hub was funded by our own fundraising initiatives and a grant from Westminster City Council. Our ambition is to open more community hubs in the areas in which we operate provided that we can raise the funds to operate them on a sustainable basis.

During the year 80 individuals accessed the Hub with 151 sessions / workshops taking place (50 individuals with 62 sessions / workshops in 2023).

Children and Family Services

The Family Support Service aims to develop confidence and resilience for parents and carers of children or adults with a learning disability, and supports families of all ages, from new parents navigating their child's health condition, to older carers

The service provides emotional and practical support, coaching, counselling, workshops, activities, training and portage as well as advice, information and support regarding welfare benefits, landlord disputes, health issues and risks, referrals, EHCPs and signposting to foodbanks and volunteer programmes.

During the year, the number of parents receiving one-to-one support from our Family Services Team was 101 (2023: 118). **50 families received portage** during the year (2023: 33) and **38 families received parent coaching** (2022/23: 14).

In 2023/24 we also introduced **workshops and early bird training attended by 51 parents during the year.**

Our Community Engagement Hub and Children and Family Services are funded entirely from grants, donations and our investment income. These life enhancing services are not otherwise available through statutory funding.

Kids Can Achieve Limited (KCA)

KCA aims to provide services for children and young adults with special needs and disabilities which offer the same opportunities that all children should enjoy. They work to ensure the children they support, and their families are safe, happy, and healthy.

They offer a wide range of services including one to one and community-based activities, after school and weekend clubs, school holiday schemes and family support and therapy.

LDN London is the sole member of KCA, a charity registered in England and Wales (Charity Number: 1096796).

KCA is a charitable company limited by guarantee (Company Number 4606116), incorporated on 10th December 2002 and registered as a charity on 1st April 2003. It has a trustee body which is responsible for overseeing and monitoring the key areas of activity within the organisation. The day-to-day management of the organisation is commissioned to and carried out by LDN London which is led by its Director of Services who reports to the KCA Board of Trustees. KCA operates throughout the borough of Harrow, and in neighbouring areas, and maintains an office in Harrow Weald.

The objective of KCA is to relieve the needs of children and young people with a learning disability or other additional needs and their parents and carers, by the provision of play, therapy, representation, and educational and social support. There are no restrictions to access the services offered by the charity although their work is for children and young people with learning disabilities and their families. **In 2023/24 KCA provided support to 134 children** (161 in 2022/23).

KCA operates a year-round Outreach Community Support Service delivering tailor made packages of support in the local community and schools during the day, after school, in the evenings and at weekends. Each package varies depending on the needs of the child or young person with **8,521 hours of support provided to 53 children during the year** (2023: 8,198 / 61 children). KCA also operates holiday schemes over 11 weeks of the year during Easter, summer, Christmas and half term periods. **1,454 days of holiday scheme were provided to 94 children during the year** (2023: 1,502 days / 111 children).

There is an After School Club and weekend club operating during term time for 38 weeks of the year. The main After School Club takes place 5 days per week, Monday to Friday, and the Saturday Stay and Play Group takes place at weekends. 2,857 After School Club sessions were provided to 65 children during the year (2023: 2,363 sessions / 75 children).

KCA also provides a variety of family and children's services funded by the City Bridge Trust, John Lyon's Charity and the local Clinical Commissioning Group (CCG) with **173 families receiving support during the year** (2023: 142).



CALIFORNIA
★
DREAMING

OUR FINANCES

Finances

The annual accounts show an end of year group operating surplus of £168,208. One of the significant factors driving this operating surplus was an increase in support provided by our sessional workforce which supported a £670K / 28% reduction in agency costs.

After taking account of unrealised and realised gains of £633,455 on the investments, there is an overall group surplus of £801,633. This group surplus includes £295,277 of investment income and bank interest.

Across all direct support services there has been a £1,850,228 (9.7%) increase in group income to £20,961,925 in 2023/24.

Due to fee increases and changes in support packages across multiple services, Adult Housing and Respite Services have seen a £1,687,563 (10.0%) increase in income to £18,486,549 and Community Services have seen a £97,993 (7.5%) increase in income to £1,308,249 in 2023/24.

KCA has seen a £50,984 (8.5%) increase in income to £651,118 due to increases in activity levels.

Expenditure has fluctuated in line with changes to service delivery.

Reserves

The organisation holds 3 types of reserves. Unrestricted general (£388,712), designated (£9,956,272) and restricted (£361,846). At 31st March 2024, the total group reserves are £10,706,830.

Unrestricted general reserves are held to meet day to day operating costs and the risks associated with fluctuations in income, particularly through the loss of contractual arrangements. Currently our unrestricted general reserves are £388,712. It is the aim of the Trustees to increase this fund through improved financial performance to at least 6 months of indirect costs over the coming years which currently equates to approximately £1.94M.

Designated reserves comprise fixed assets and investment funds.

The designated fixed assets reserves are held to meet the future needs of our services. At 31st March 2024, LDN London's designated fixed assets reserves are £1,666,456. The property fund represents the net book value of the buildings owned by the charity and the other fixed assets funds represent the net book value of motor vehicles, building improvements, fixtures and fittings and computers fully owned by LDN London.

The designated investment reserves are held to provide investment income. The majority of these reserves represent the realisation of a property asset originally donated by a supporter to further the organisation's charitable aims.

Income arising from these investments is applied by us to finance non-statutory funded activities which would not otherwise take place, either because funding has ceased, or because funding is not available. These activities form part of our strategic aims. Given their importance, the Trustees have allocated the capital value of those investments as a designated fund. This fund is to be held for the longer term to help support similar worthy unfunded activities in the future. At 31st March 2024, our designated investment reserves are £8,289,816 which includes the investment fund (£7,899,248) and the small grants fund (£390,568). It is the aim of the Trustees to increase the investment fund to provide an annual income of £300,000 which, based on a 3.5% return, equates to a fund with a capital value of approximately £8.6M.

The restricted reserves include the Alice Gestetner investment fund (£239,139) and other funds which have been raised to enable the delivery of non-statutory funded activities by LDN London. At 31st March 2024, our restricted reserves are £361,846. As these funds are restricted, they are not available for general purposes of the charity. Whilst the Trustees do not have a target for increasing the level of restricted funds, it is their aim to secure ongoing additional fundraised income (both restricted and unrestricted) to support the charity's activities and to spend these funds in a timely manner.

LDN London's reserves policy is informed by its:

- forecasts for levels of income in future years, taking into account the reliability of each source of income and the prospects for opening up new sources of income.
- forecasts for expenditure in future years based on planned activity.
- analysis of any future need, opportunities, contingencies or risks, the effect of which are not likely to be able to be met out of income if they arise.
- assessment, on best evidence reasonably available, of the likelihood of each of those needs arising and the potential consequences for the charity of not being able to meet them.

The level of reserves is monitored and reviewed by the Trustees at least on a quarterly basis.

LDN London's investment powers which are set out

Investments

in the Articles of Association, gives the charity the power 'to invest any money that LDN London does not immediately need in any investments, securities or properties; and to accumulate and set aside funds for special purposes or as reserves'.

LDN London's Investment Advisors are HFMC Wealth of 29 St John's Lane, London, EC1M 4NA.

At 31st March 2024, the market value of LDN London's investments was £8,528,955 compared with £7,895,500 in the previous year. There were net unrealised gains of £633,455 on the investment portfolio during the year. These monies are invested in 2 discretionary managed portfolio funds: with Cazenove Capital and Brewin Dolphin.

LDN London's investments comprised:

	(£)
Equities	5,547,687
Fixed Interest	1,999,638
Deposits	240,287
Commodities	183,969
Other	557,374
TOTAL	8,528,955

The portfolio is invested with an emphasis on a balance between income and capital growth. It is managed with a medium risk approach with a broad spread of equities that may include an element in cash and / or bonds. The dual aims over the medium to long term, is for the capital value of the invested funds to achieve a growth of CPI and for the generation of interest / dividend income at 3.5% per annum.

The income return over the year was:

Cazenove Fund	3.4%
Brewin Dolphin Main Fund	3.7%
Brewin Dolphin	3.9%
Alice Gestetner Fund	
Brewin Dolphin	3.8%
Small Grants Fund	
TOTAL	3.6%

The medium-term growth in the capital value was:

	Capital growth	CPI
Previous 5 years	10%	24%
Previous 10 years	51%	33%

The investment income of £282,518 in 2023/24 (see note 3) was used to fund the Family Services Team (£117,342), the LDN Community Engagement Hub (£83,573), a Digital Development project (£58,680), and grants provided by the Alice Gestetner Fund (£22,923).



THE YEAR AHEAD

Our Ambitions

We will continue to be a recognised leader in the provision of support for people with learning disabilities in London.

We want to continue to establish meaningful and collaborative partnerships in all the London boroughs we work in, which influences and shape future services and provides value for money.

We will only expand the Learning Disability Network where we can make a difference to the quality of people's lives.

We will establish partnerships which enable better long-term planning, investment, and value for money. We want to continue to work with commissioners and other partners, including people with learning disabilities and their families to develop high quality models of service, which are sustainable in the future.

Our services will be robust and resilient with management and support structures which are efficient and provide value for money. We will transform our systems and processes to make best use of technology and embrace digital innovation.

We will maintain secure financial foundations to provide stability across all our activities. Changes in contractual arrangements will be effectively managed with flexible and dynamic central services.

In each of the London boroughs in which we work, we will offer unparalleled, accessible support to those with learning disabilities regardless of their personal funding. Where statutory funding is not available, we will raise substantial voluntary funds to deliver on our ambition with the creation of our Community Engagement Hub initiatives.

Our Community Engagement Hubs will also collect and share information about outcomes for learning-disabled people to ensure we make the greatest impact, and we can directly influence local and national policy decisions.

We will recruit and retain exceptional staff who are well supported and work for us because we invest in them, value them and make sure that they are equipped to

do their jobs well. We will be the employer people will choose to work for.

We will ensure that the quality of our services is consistently excellent in all aspects of support, and that we are caring, ambitious, and innovative.

We will improve the health and wellbeing of the people we support to ensure better outcomes for all.

We will maximise our property assets to offer good quality accommodation with the right support, where tenants will have more choices about how they live.

We are committed to creating lasting social value. To achieve this, we:

- Optimise the well-being of the people we support and promote the sustainability of their communities.
- Think long-term and invest in long-lasting outcomes.
- Work with partners to deliver social value outcomes.
- Exercise fair employment practices and contribute to socially inclusive communities.
- Deliver social value at no additional cost to commissioning authorities.
- Measure, evaluate, and report on the social value we deliver, aiming for a year-on-year increase in outcomes.



Our Strategic Plan

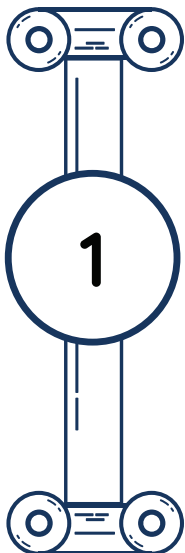
To achieve our ambitions, we have 6 strategic pillars which support our strategic plan.

These pillars are essential in guiding us towards our aspirations to be the best learning disability organisation in London. All our ambitions are underpinned by effective safeguarding as a core principle across all our activities.

Each pillar represents the themes that people we support, their families, our staff, and our partners have told us are important to them.

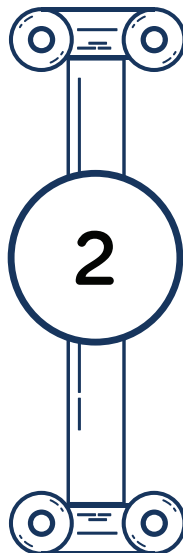
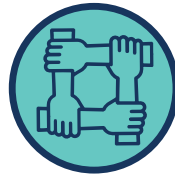
OUR STRATEGIC PILLARS ARE:

**Strong, Effective,
Resilient**



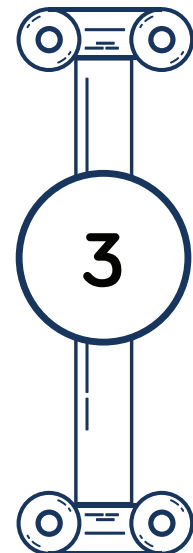
To strengthen strategic partnerships, with effective and resilient services, systems and structures.

**Community
Engagement- Ending
Isolation**



To raise funds for our Community Engagement Hubs and deliver on our charitable aims.

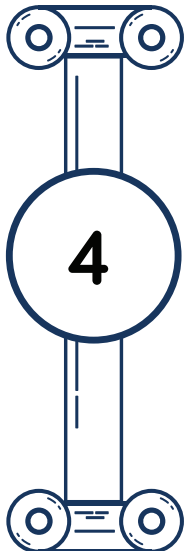
Values in Practice



To provide quality assurance and continuous improvement processes to ensure we practice our values in everything we do.

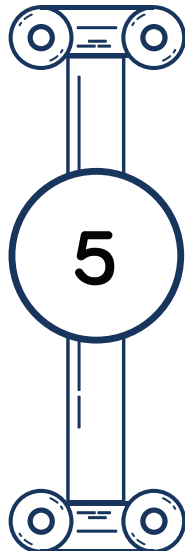


LDN People



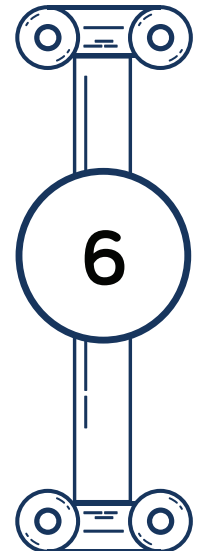
To roll out innovative recruitment, retention, and recognition initiatives and implement a learning and development reset.

Health Literate, Health Confident, Health Aware



To provide an integrated Health and Social Care model of support across our accommodation services.

Good Homes, Good Lives



To provide good-quality housing that delivers 'good homes, good lives'.

OUR GOVERNANCE AND MANAGEMENT

Structure, Governance and Management

LDN London currently has 13 Trustees who constitute the Board ("the Board"), which is responsible for the administration, management and control of the affairs and property of the Charity. The Board usually meets five times a year including a strategy meeting.

The governing document is the Articles of Association of the company and members of the Board are the Directors of the company.

The Trustees confirm they have complied with the duty in section 17 of the Charities Act 2011 which requires them to have due regard to public benefit guidance published by the Charity Commission in determining the activities undertaken by the charity.

The Board has an appropriate range of committees to which are delegated the responsibility for overseeing and monitoring the key areas of activity within the organisation and reporting to the Board. The Trustees and committee members come from a wide range of related professional and personal backgrounds. Each committee has terms of reference which outline both purpose and process. The purposes of the board and committee structure is to set the strategy of the charity, monitor the activities and performance of the organisation, provide guidance where appropriate and to ensure the organisation is meeting its objectives and working within the law.

We consult with people with learning disabilities, their families and carers. These consultations are valuable and have a direct influence on our decision-making processes.

The management team is led by the Chief Executive (Gabby Machell) who reports to the Board of Trustees. We operate within a number of London boroughs and maintain an office in West London.

LDN London is the sole member of Kids Can Achieve Ltd (KCA), a charity recognised in England and Wales (Charity Number: 1096796).

The Trustees are also members of LDN London. No Trustee received any remuneration during the year. All Trustees and Officers of LDN London are appointed in accordance with sections 11, 12 and 13 of the Articles of Association.

Trustee Indemnity Insurance forms part of the General Liability Insurance taken out by LDN London. The authorisation to take out this type of insurance is included in the Articles of Association.

The Trustees who served during the year (all of whom are Directors) are as follows, membership of sub-committees is indicated in () brackets:

- **Mr Adam Bharucha** (Finance, Audit & Risk)
- **Mr Jim Blair** - appointed on 17th January 2024
- **Ms Margaret Butler** (Fundraising and Operations & Safeguarding)
- **Mr Martin Haarmans** - Honorary Treasurer (Finance, Audit & Risk, Remuneration and Nomination)
- **Mr Ian Jackson** (Finance, Audit & Risk)
- **Dr Simon Jarrett** (Fundraising)
- **Mr David Luscombe** (Operations & Safeguarding)
- **Mr Jeff Mendzil** (Finance, Audit & Risk and Fundraising)
- **Mrs Lynne Peacock** - Chair (Finance, Audit & Risk, Remuneration and Nomination)
- **Mr Keith Rodwell** (Operations & Safeguarding) - appointed on 26th June 2023
- **Ms Lindy Shufflebotham** (Operations & Safeguarding) - appointed on 13th December 2023
- **Ms Emma Swain** - (Fundraising)
- **Mr Michael Webber** - Vice Chair (Finance, Audit & Risk, Operations & Safeguarding, Remuneration and Nomination)

Trustee Recruitment, Induction and Training

New Trustees are recruited as vacancies arise from a wide range of backgrounds with professional, lived and relevant experiences.

On appointment, each Trustee receives the Articles of Association, Risk Register, Strategic Plan, Board Minutes, the most recent set of annual accounts and management accounts, the Charity Commission's "Charity Trustee Welcome Pack" (an introduction to trusteeship, outlining their roles and responsibilities, and providing guidance and links to further information), and relevant organisational policies and procedures. New Trustees meet with the Chair and Chief Executive and undertake an induction programme including service visits.

In addition to mandatory safeguarding training, Trustees access learning and development opportunities through the Charity Commission and our legal and audit partners. An annual trustee away day is held which includes elements of training and development.

Trustees serve for a term of three years and may be appointed to serve a further two terms. Trustees may only serve more than three terms in exceptional circumstances. Trustees are nominated by members subject to approval by the Board on recommendation by the Nomination Committee. Prior to making appointments, the Trustees review their skills audit to try to attract members with the relevant experience and skills to the Board.

Risk Management

The Trustees are responsible for LDN London's risk management mitigation systems and reviewing procedures. The material financial and non-financial risks the Charity is exposed to have been identified and an action plan created to ensure any such risks are mitigated. The main areas of risk identified correlate to the pillars of our strategic plan and the associated risk appraisal action plan forms our business plan objectives. The action plan is reviewed quarterly by the Finance, Audit & Risk Committee and Board. This ensures that Trustees are fully up to date with how we are mitigating the key risks to the organisation and whether the risk position is improving or worsening.

Current significant risk areas include the:

- potential changes in contractual arrangements and associated funding
- recruitment, retention and training of staff and the level of agency staff used
- management of voids and the maintaining of high-quality accommodation
- maintaining a high level of quality services
- roll out of a range of digital transformation projects
- ongoing provision of efficient, robust, and sustainable management and central support services

Environmental Policy

We are committed to providing quality services in a manner that ensures a safe and healthy environment for all our service users and employees whilst minimising our potential impact on the wider environment. We actively promote energy conservation, recycling, and the reduction of waste in all our activities and provide training and information to our service users and employees.

Senior Management Remuneration

The Remuneration Committee meets at least annually to review salary and benefit levels of the senior management team. This review includes sector benchmarking, overall remuneration levels in the charity and the skills and experience of the senior management team.

Volunteers

In keeping with recommended practice, below is an estimate of the number of hours that people give to LDN London free of charge. Volunteers provide direct support and assistance in our services, assistance with fundraising activities and attendance and associated work with The Board, Committees and other operational activities. We have not put a value on the many hours of work that our volunteers give us, but if we were to value them at £20.00 per hour, the total would come to £29,450 (2023: £20,070).

	2024 (Hours)	2023 (Hours)
Service Support	0	96
Fundraising	126	154
Corporate	804	249
Governance	543	505
TOTAL	1,473	1,004

Conduit Funds

At 31 March 2024, LDN London held £641,687 on behalf of service users (2023: £694,554). These amounts are excluded from LDN London's Balance Sheet. Further details are provided in note 17.



STATEMENT OF TRUSTEES' RESPONSIBILITIES

The Trustees are responsible for preparing the annual report and the financial statements in accordance with applicable law and regulations.

Company law requires the Trustees to prepare financial statements for each financial year. The Trustees have elected to prepare the financial statements in accordance with United Kingdom Generally Accepted Accounting Practice (United Kingdom Accounting Standards and applicable law). The Trustees must not approve the financial statements unless they are satisfied that they give a true and fair view of the state of affairs of the charitable company and the group and of the result for that year.

In preparing these financial statements, the Trustees are required to:

- select suitable accounting policies and then apply them consistently;
- observe the methods and principles in the Charities SORP;
- make judgments and accounting estimates that are reasonable and prudent;
- state whether applicable UK accounting standards have been followed, subject to any material departures disclosed and explained in the accounts;
- prepare the financial statements on the going concern basis unless it is inappropriate to presume that the charitable company will continue in business.

The Trustees are responsible for keeping adequate accounting records which are sufficient to show and explain the charitable company's transactions and disclose with reasonable accuracy at any time the financial position of the charitable company and the group and enable them to ensure that the financial statements comply with the Companies Act 2006. They are also responsible for safeguarding the assets of the charitable company and the group and hence for taking reasonable steps for the prevention and detection of fraud and other irregularities.

The Trustees are responsible for the maintenance and integrity of the corporate and financial information included on the charity's website. Legislation in the United Kingdom governing the preparation and dissemination of the financial statements and other information included in annual reports may differ from legislation in other jurisdictions.

So far as each of the Trustees is aware at the time the report is approved:

- there is no relevant audit information of which the charitable company's auditors are unaware; and
- the Trustees have taken all reasonable steps that they ought to have taken to make themselves aware of any relevant audit information and to establish that the auditors are aware of that information.

In approving this Trustees' Report, the Board are also approving the Strategic Report included here in their capacity as company directors.

By Order of the Board on 2nd October 2024



Gabby Machell
Secretary of the Board



Independent Auditor's Report

INDEPENDENT AUDITORS' REPORT TO THE MEMBERS OF
LEARNING DISABILITY NETWORK LONDON LTD





INDEPENDENT AUDITORS' REPORT

Opinion

We have audited the financial statements of Learning Disability Network London Limited ('the charitable company') and its subsidiary ('the group') for the year ended 31 March 2024 which comprise the Consolidated Statement of Financial Activities, the Group and Charity Balance Sheets, the Consolidated Cash Flow Statement and notes to the financial statements, including significant accounting policies. The financial reporting framework that has been applied in their preparation is applicable law and United Kingdom Accounting Standards, including Financial Reporting Standard 102 The Financial Reporting Standard applicable in the UK and Republic of Ireland (United Kingdom Generally Accepted Accounting Practice).

In our opinion, the financial statements:

- give a true and fair view of the state of the group's and the charitable company's affairs as at 31 March 2024 and of the group's income and expenditure, for the year then ended;
- have been properly prepared in accordance with United Kingdom Generally Accepted Accounting Practice; and
- have been prepared in accordance with the requirements of the Companies Act 2006.

Basis for opinion

We conducted our audit in accordance with International Standards on Auditing (UK) (ISAs (UK)) and applicable law. Our responsibilities under those standards are further described in the Auditor's responsibilities for the audit of the financial statements section of our report. We are independent of the group in accordance with the ethical requirements that are relevant to our audit of the financial statements in the UK, including the FRC's Ethical Standard, and we have fulfilled our other ethical responsibilities in accordance with these requirements. We believe that the audit evidence we have obtained is sufficient and appropriate to provide a basis for our opinion.

In auditing the financial statements, we have concluded that the trustees' use of the going concern basis of accounting in the preparation of the financial statements is appropriate.

Based on the work we have performed, we have not identified any material uncertainties relating to events or conditions that, individually or collectively, may cast significant doubt on the charitable company's

or the group's ability to continue as a going concern for a period of at least twelve months from when the financial statements are authorised for issue.

Our responsibilities and the responsibilities of the trustees with respect to going concern are described in the relevant sections of this report.

Other information

The trustees are responsible for the other information contained within the annual report. The other information comprises the information included in the annual report, other than the financial statements and our auditor's report thereon. Our opinion on the financial statements does not cover the other information and, except to the extent otherwise explicitly stated in our report, we do not express any form of assurance conclusion thereon.

Our responsibility is to read the other information and, in doing so, consider whether the other information is materially inconsistent with the financial statements, or our knowledge obtained in the audit or otherwise appears to be materially misstated. If we identify such material inconsistencies or apparent material misstatements, we are required to determine whether this gives rise to a material misstatement in the financial statements themselves. If, based on the work we have performed, we conclude that there is a material misstatement of this other information, we are required to report that fact.

We have nothing to report in this regard.

Opinions on other matters prescribed by the Companies Act 2006

In our opinion based on the work undertaken in the course of our audit

- the information given in the trustees' report, which includes the directors' report and the strategic report prepared for the purposes of company law, for the financial year for which the financial statements are prepared is consistent with the financial statements; and
- the strategic report and the directors' report included within the trustees' report have been prepared in accordance with applicable legal requirements.

Matters on which we are required to report by exception In light of the knowledge and understanding of the group and charitable company and their environment obtained in the course of the audit, we have not identified material misstatements in the strategic report or the directors' report included within the trustees' report.

We have nothing to report in respect of the following matters in relation to which the Companies Act 2006 requires us to report to you if, in our opinion:

- adequate and proper accounting records have not been kept; or
- the financial statements are not in agreement with the accounting records and returns; or
- certain disclosures of trustees' remuneration specified by law are not made; or
- we have not received all the information and explanations we require for our audit.

Responsibilities of trustees for the financial statements

As explained more fully in the trustees' responsibilities statement set out on page 33 the trustees (who are also the directors of the charitable company for the purposes of company law) are responsible for the preparation of the financial statements and for being satisfied that they give a true and fair view, and for such internal control as the trustees determine is necessary to enable the preparation of financial statements that are free from material misstatement, whether due to fraud or error.

In preparing the financial statements, the trustees are responsible for assessing the charitable company's ability to continue as a going concern, disclosing, as applicable, matters related to going concern and using the going concern basis of accounting unless the trustees either intend to liquidate the charitable company or to cease operations, or have no realistic alternative but to do so.

Auditor's responsibilities for the audit of the financial statements

Our objectives are to obtain reasonable assurance about whether the financial statements as a whole are free from material misstatement, whether due to fraud or error, and to issue an auditor's report that includes our opinion. Reasonable assurance is a high level of assurance but is not a guarantee that an audit conducted in accordance with ISAs (UK) will always detect a material misstatement when it exists. Misstatements can arise from fraud or error and are considered material if, individually or in the aggregate, they could reasonably be expected to influence the economic decisions of users taken on the basis of these financial statements.

Details of the extent to which the audit was considered capable of detecting irregularities, including fraud and non-compliance with laws and regulations are set out below.

A further description of our responsibilities for the audit of the financial statements is located on the Financial Reporting Council's website at: www.frc.org.uk/auditorsresponsibilities. This description forms part of our auditor's report.

Extent to which the audit was considered capable of detecting irregularities, including fraud

Irregularities, including fraud, are instances of non-compliance with laws and regulations. We identified and assessed the risks of material misstatement of the financial statements from irregularities, whether due to fraud or error, and discussed these between our audit team members. We then designed and performed audit procedures responsive to those risks, including obtaining audit evidence sufficient and appropriate to provide a basis for our opinion.

We obtained an understanding of the legal and regulatory frameworks within which the charitable company and group operates, focusing on those laws and regulations that have a direct effect on the determination of material amounts and disclosures in the financial statements. The laws and regulations we considered in this context were the Companies Act

2006, the Charities Act 2011 together with the Charities SORP (FRS 102). We assessed the required compliance with these laws and regulations as part of our audit procedures on the related financial statement items.

In addition, we considered provisions of other laws and regulations that do not have a direct effect on the financial statements but compliance with which might be fundamental to the charitable company's and the group's ability to operate or to avoid a material penalty. We also considered the opportunities and incentives that may exist within the charitable company and the group for fraud. The laws and regulations we considered in this context for the UK operations were Care Quality Commission (CQC) standards, Ofsted framework and standards, General Data Protection Regulation (GDPR), Health and safety and employment legislation.

Auditing standards limit the required audit procedures to identify non-compliance with these laws and regulations to enquiry of the Trustees and other management and inspection of regulatory and legal correspondence, if any.

We identified the greatest risk of material impact on the financial statements from irregularities, including fraud, to be within the timing of recognition of income and the override of controls by management. Our audit procedures to respond to these risks included enquiries of management, data analytics on the posting of journals, detailed testing of income, reviewing accounting estimates for biases, reviewing regulatory correspondence with the Charity Commission, CQC and Ofsted, and reading minutes of meetings of those charged with governance.

Owing to the inherent limitations of an audit, there is an unavoidable risk that we may not have detected some material misstatements in the financial statements, even though we have properly planned and performed our audit in accordance with auditing standards. For example, the further removed non-compliance with laws and regulations (irregularities) is from the events and transactions reflected in the financial statements, the less likely the inherently limited procedures required by auditing standards would identify it. In addition, as with any audit, there remained a higher risk of non-detection of irregularities, as these may involve collusion, forgery, intentional omissions, misrepresentations, or the override of internal controls. We are not responsible for preventing non-compliance and cannot be expected to detect non-compliance with all laws and regulations.

Use of our report

This report is made solely to the charitable company's members, as a body, in accordance with Chapter 3 of Part 16 of the Companies Act 2006. Our audit work has been undertaken so that we might state to the charitable company's members those matters we are required to state to them in an auditor's report and for no other purpose. To the fullest extent permitted by law, we do not accept or assume responsibility to anyone other than the charitable company and the charitable company's members as a body, for our audit work, for this report, or for the opinions we have formed.



Julia Poulter
Senior Statutory Auditor

For and on behalf of

Crowe U.K. LLP
Statutory Auditor
London
Independent Auditors' Report

Date: 14th October 2024



Financial Statements

CONSOLIDATED STATEMENT OF FINANCIAL ACTIVITIES

GROUP AND CHARITY BALANCE SHEETS

CONSOLIDATED CASH FLOW STATEMENT

STATEMENT OF ACCOUNTING POLICIES

NOTES TO THE FINANCIAL STATEMENTS





CONSOLIDATED STATEMENT OF FINANCIAL ACTIVITIES

for the year ended 31st March 2024

(INCLUDING THE INCOME AND EXPENDITURE ACCOUNT)

	Note	Unrestrict- ed General Funds £	Unre- stricted Designated Funds £	Restricted Funds £	Total Funds 2024 £	Total Funds 2023 £
INCOME FROM						
Income from donations and legacies:						
Donations and Legacies	1	18,172	-	18,742	36,914	25,158
Fundraising	2	2,695	-	9,579	12,274	26,176
Income from charitable activities:						
Adult Housing & Respite Services		18,446,761	-	39,788	18,486,549	16,798,986
Community Services		1,360,861	-	45,380	1,406,241	1,308,248
Kids Can Achieve		-	-	651,118	651,118	600,134
Investments	3	12,759	273,777	8,741	295,277	275,458
Income from other trading activities	4	69,567	-	3,985	73,552	77,537
Total income		<u>19,910,815</u>	<u>273,777</u>	<u>777,333</u>	<u>20,961,925</u>	<u>19,111,697</u>
EXPENDITURE ON						
Expenditure on raising funds:						
Income Generation Costs *		189,878	-	16,044	205,922	190,970
Voluntary Fundraising Costs		-	-	-	-	12,032
Expenditure on charitable activities:						
Adult Housing & Respite Services		18,080,873	262,603	42,048	18,385,524	17,294,238
Community Services		1,283,052	200,813	73,890	1,557,755	1,296,851
Kids Can Achieve		-	-	644,516	644,516	593,112
Total expenditure		<u>19,553,803</u>	<u>463,416</u>	<u>776,498</u>	<u>20,793,717</u>	<u>19,387,203</u>
Net income / (expenditure) before net gains / (losses) on investments		<u>357,012</u>	<u>(189,639)</u>	<u>835</u>	<u>168,208</u>	<u>(275,506)</u>
OTHER GAINS AND LOSSES						
Net gains / (losses) on investments	9	-	620,928	12,528	633,456	(569,370)
NET INCOME / (EXPENDITURE)		<u>357,012</u>	<u>431,289</u>	<u>13,363</u>	<u>801,664</u>	<u>(844,876)</u>
Transfers between funds		<u>(57,727)</u>	<u>59,916</u>	<u>(2,189)</u>	<u>-</u>	<u>-</u>
NET MOVEMENT IN FUNDS		<u>299,285</u>	<u>491,205</u>	<u>11,174</u>	<u>801,664</u>	<u>(844,876)</u>
Fund balances brought forward at 1 April		<u>89,427</u>	<u>9,465,067</u>	<u>350,672</u>	<u>9,905,166</u>	<u>10,750,042</u>
FUND BALANCES CARRIED FORWARD AT 31 MARCH	13	<u><u>388,712</u></u>	<u><u>9,956,272</u></u>	<u><u>361,846</u></u>	<u><u>10,706,830</u></u>	<u><u>9,905,166</u></u>

There are no recognised gains or losses other than those dealt with in the Statement of Financial Activities.

All operations are continuing during the year.

The notes on pages 48 to 59 form part of these financial statements.

* Income Generation Costs relate to expenditure associated with securing income across the whole organisation.

GROUP AND CHARITY BALANCE SHEETS

for the year ended 31st March 2024

		Group 2024	LDN London 2024	Group 2023	LDN London 2023
	Note	£	£	£	£
FIXED ASSETS					
Tangible fixed assets	8	2,176,947	1,666,456	2,400,927	1,852,958
Investments	9	8,528,955	8,528,955	7,895,500	7,895,500
		<u>10,705,902</u>	<u>10,195,411</u>	10,296,427	9,748,458
CURRENT ASSETS					
Debtors	10	2,064,324	1,951,243	1,366,216	1,293,040
Cash at bank and in hand		731,012	658,476	922,871	831,765
		<u>2,795,336</u>	<u>2,609,719</u>	2,289,087	2,124,805
CREDITORS					
Amounts due within one year	11	<u>(2,590,629)</u>	<u>(2,203,056)</u>	(2,446,942)	(2,065,187)
NET CURRENT ASSETS / (LIABILITIES)		<u>204,707</u>	<u>406,663</u>	(157,855)	59,618
CREDITORS					
Amounts falling more than one year	12	(203,779)	-	(233,406)	-
NET ASSETS		<u>10,706,830</u>	<u>10,602,074</u>	9,905,166	9,808,076
FUNDS					
Restricted Funds	13	361,846	257,090	350,672	253,582
Unrestricted Designated Funds	13	9,956,272	9,956,272	9,465,067	9,465,067
Unrestricted General Funds	13	388,712	388,712	89,427	89,427
		<u>10,706,830</u>	<u>10,602,074</u>	9,905,166	9,808,376

The net income / (expenditure) of LDN London before consolidation was £793,998 - 2023: (£862,456) net income.
The financial statements on pages 42 to 59 were approved and authorised for issue by the Board on 2nd October 2024 signed on its behalf by:



Director:
Lynne Peacock



Director:
Martin Haarmans

Registered Company No 2325273

The notes on pages 48 to 59 form part of these financial statements.

CONSOLIDATED CASH FLOW STATEMENT

for the year ended 31st March 2024

	<i>Note</i>	2024	2023
		£	£
Net movement in funds		801,664	(844,876)
CASH FLOWS FROM OPERATING ACTIVITIES			
Depreciation on tangible fixed assets	8	265,375	260,804
Net (Gains) / Losses on investments		(633,455)	569,370
Investment income	3	(282,518)	(270,474)
Interest received	3	(12,758)	(4,984)
Interest paid		19,894	9,386
(Increase) / decrease in debtors		(698,108)	260,849
Increase / (decrease) in creditors		143,739	119,413
Profit on the disposal of tangible fixed assets		(5,430)	-
Net cash provided by / (used in) operating activities		(1,203,261)	944,364
CASH FLOWS FROM INVESTING ACTIVITIES			
Investment income received		282,518	270,474
Interest received		12,758	4,984
Interest paid		(19,894)	(9,386)
Loan capital received		-	-
Payments to repay loan capital		(29,680)	(214,192)
Disposal proceeds from investment securities	9	-	-
Payments to acquire investment securities	9	-	-
Movement on investment cash		-	-
Disposal proceeds from sale of tangible fixed assets	8	5,430	-
Payments to acquire tangible fixed assets	8	(41,394)	(88,320)
Net cash provided by / (used in) investing activities		209,738	(36,440)
CHANGE IN CASH AND CASH EQUIVALENTS IN THE REPORTING PERIOD		(191,859)	63,048
Cash and cash equivalents at the beginning of the reporting period		922,871	859,823
Cash and cash equivalents at the end of the reporting period		731,012	922,871

The notes on pages 48 to 59 form part of these financial statements.

STATEMENT OF ACCOUNTING POLICIES

Company Information

Learning Disability Network London Limited ('LDN London') is a Public Benefit Entity as defined by Financial Reporting Standard 102. It was incorporated as a company limited by guarantee on 6th December 1988 (Company Number: 2325273) and registered as a charity on 27th February 1989 (Charity Number: 8010 81).

The registered office of LDN London is 16A Croxley Road, London, W9 3HL.

Basis of Preparation

The financial statements are prepared under the historical cost convention as modified to include the revaluation of investments at market value, and in accordance with the Statement of Recommended Practice for Charities (SORP 2019) (Second Edition, effective 1 January 2019), applicable accounting standards (FRS 102) and the requirements of the Companies Act 2006. The accounts of LDN London consolidate Kids Can Achieve. LDN London became sole member of Kids Can Achieve in April 2016. Kids Can Achieve has been consolidated on a line-by-line basis from April 2016.

Going Concern

The Trustees have reviewed the forecasts for the 12 months following the date on which these accounts are approved and the key risks that could impact on this expected financial performance. In doing so, scenarios with a significant impact and associated mitigating actions have been considered. On this basis, the Trustees have a reasonable expectation that there are no material uncertainties regarding the charity's ability to continue as a going concern.

LDN London has a clear strategic plan and associated risk appraisal which also gives the Trustees reasonable confidence that the financial position should remain positive over the coming years. This includes actions to mitigate risks and any financial impact on LDN London. The key ambitions for the future highlighted on page 26, the budgets and cashflow forecasts and the level of investment funds also support this position.

Critical Accounting Judgements and Estimates

In the application of the charity's accounting policies, Trustees are required to make judgements, estimates and assumptions about the carrying values of assets and liabilities that are not readily apparent from other sources. The estimates and underlying assumptions are based on historical experience and other factors that are considered to be relevant, including expectations of future events that are believed to be reasonable under the circumstances. Actual results may differ from these estimates.

The estimates and underlying assumptions are reviewed on an ongoing basis. Revisions to accounting estimates are recognised in the period in which estimates are revised if the revision affects only that period, or in the period of the revision and future periods if the revision affects the current and future periods.

The charity recognises accruals in accordance with the accounting policy for creditors and provisions. Where invoices or contracts are not received, the value of the liability is estimated based on the best information available to the charity at the time.

In the view of Trustees, no assumptions concerning the future or estimation uncertainty affecting assets and liabilities at the balance sheet date are likely to result in a material adjustment to their carrying amounts in the next financial year. This includes assumptions and estimates for bad debts, the useful and economic life of assets and the valuation of investments.

Income

All income is recognised once the charity has entitlement to the resources, it is probable the resources will be received, and the monetary value of income can be measured with sufficient reliability. Income is deferred when the charity must fulfil conditions before becoming entitled or when the donor or contracting party has specified the income be expended in a future period. Grants from other agencies amounting to a contract for services are included as income as the charity earns the right to the consideration by delivery of those services.

Government grants are recognised on the performance model, when the charity has complied with any conditions attaching to the grant and the grant will be received.

Donations and Grants

Grants are included in the financial statements on an accruals basis. Donations are included at the time of receipt. Tax recoverable in respect of donations received under covenant or Gift Aid arrangements is included at the time of receipt from HMRC. Monies are only deferred where there is not yet entitlement to funds relating to specific activities.

Expenditure

All expenditure is accounted for on an accruals basis. Liabilities are recognised as resources expended as soon as there is a legal or constructive obligation committing the charity to the expenditure. Indirect support costs are apportioned to expense headings, as set out in Note 6. All other expenses, including costs of generating funds and charitable activities, are allocated to expense headings on a direct cost basis. Investment management costs relate to management fees for listed investments. Governance costs relate to the statutory costs of governing the charity.

Tangible Fixed Assets

Items costing over £1,000 are capitalised as fixed assets or else they are written off as expenditure during the year. Depreciation is provided on all tangible fixed assets, except freehold land, at rates calculated to write off each asset evenly over its expected useful life, as follows:

Freeholds Building	30 - 50 years
Building Improvements	10 years
Fixtures and Fittings	7 years
Motor Vehicles	7 years
Computer Equipment	5 years

Leasehold improvements are capitalised and depreciated over the lower of the life of the lease or of the useful economic life of the assets. All moveable furniture and fittings are written off as purchased. Assets donated to LDN London, or grants supported are included in tangible fixed assets and the corresponding amount is credited to the Statement of Financial Activities.

Investments

Investments are stated at the market value prevailing at the balance sheet date and the unrealised gain/(loss) is recognised in the Statement of Financial Activities.

Cash at Bank and in Hand

Cash at bank and cash in hand includes cash and short term highly liquid investments with a short maturity of three months or less from the date of acquisition or opening of the deposit or similar account.

Financial Instruments

The charity only has financial assets and financial liabilities of a kind that qualify as basic financial instruments. Basic financial instruments, including trade and other debtors and creditors are initially recognised at transaction value and subsequently measured at their settlement value.

Creditors and Provisions

Creditors and provisions are recognised where the charity has a present obligation resulting from a past event that will probably result in the transfer of funds to a third party and the amount due to settle the obligation can be measured or estimated reliably.

Funds

LDN London maintains three types of fund:

- Restricted - Where the purposes for which the funds may be used have been restricted by donors.
- Unrestricted Designated - Where the funds are unrestricted, but the Trustees have designated them for a specific purpose.
- Unrestricted General - Where the fund is not restricted as to use.

Pensions

Pension costs for LDN London's money purchase schemes are charged to the Statements of Financial Activities as payable. Pension contributions outstanding are accrued at year end.

Holiday Pay

Annual Holiday Pay leave and other short term employee benefits earned but not utilised in the year are accrued at year end.

Leased Assets

The annual rentals on 'operating leases' are charged to the Statements of Financial Activities on a straight-line basis over lease term.



NOTES TO THE FINANCIAL STATEMENTS

for the year ended 31st March 2024

	2024 Total	2023 Total
1. DONATIONS & LEGACIES	£	£
4C Hotel Group	2,786	-
CAF Harrow Road	-	1,000
Clifford Gundle Philanthropic Trust	-	11,000
JHB Charitable Trust	1,000	-
Legacies	1,016	3,582
Maida Vale School	7,397	-
Martin Prozesky	1,100	-
ROC Technology	-	1,000
Trustee Donations	500	-
Virgin	1,560	-
Other	10,571	3,014
Kids Can Achieve	10,984	5,562
Total Donations & Legacies	36,914	25,158
	2024 Total	2023 Total
	£	£
2. FUNDRAISING		
Band Night	667	816
Challenge Events	6,297	16,706
Christmas Campaign	-	7,140
Dragon Boat Race	1,144	-
LDN Debate	1,237	-
Museum of Brands Event	791	-
KCA	2,138	1,514
Total Income from Voluntary Fundraising	12,274	26,176
	2024 Total	2023 Total
	£	£
3. INVESTMENTS		
Investment Income (LDN London)	282,518	270,474
Bank Interest Earned (LDN London)	12,759	4,984
Bank Interest Earned (Kids Can Achieve)	-	-
Total Income from Investments	295,277	275,458
	2024 Total	2023 Total
	£	£
4. INCOME FROM OTHER TRADING ACTIVITIES		
Rental Income (LDN London)	69,567	69,567
Rental Income (Kids Can Achieve)	3,985	7,970
Total Other Income	73,552	77,537

	Staff Costs £	Depreciation £	Other £	2024 Total £	2023 Total £
5. EXPENDITURE ON					
(a) Analysis of support costs					
Raising funds					
- Income Generation Costs (LDN London)	189,878	-	-	189,878	186,482
- Income Generation Costs (Kids Can Achieve)	16,044	-	-	16,044	4,488
- Voluntary Fundraising Costs	-	-	-	-	12,032
Charitable activities					
- Adult Housing & Respite Services	14,952,175	208,072	3,225,277	18,385,524	17,294,238
- Community Services	1,291,622	19,824	246,309	1,557,755	1,296,851
- Kids Can Achieve	425,583	37,479	181,454	644,516	593,112
Total expenditure	16,875,302	265,375	3,653,040	20,793,717	19,387,203

	Direct Cost £	Indirect Cost £	2024 Total £	2023 Total £
Raising funds				
- Income Generation Costs (LDN London)	-	189,878	189,878	186,482
- Income Generation Costs (Kids Can Achieve)	-	16,044	16,044	4,488
- Voluntary Fundraising Costs	-	-	-	12,032
Charitable activities				
- Adult Housing & Respite Services	15,141,417	3,244,107	18,385,524	17,294,238
- Community Services	1,313,105	244,650	1,557,755	1,296,852
- Kids Can Achieve	457,568	186,948	644,516	593,112
Total expenditure	16,912,090	3,881,627	20,793,717	19,387,203

For full 2023 comparatives see note 24

(b) Analysis of indirect costs	2024 Total £	2023 Total £
CEO, Finance & Admin (Staff Costs)	883,345	865,076
Building & Property, HR, IT & SMT (Full Costs) and CEO, Finance & Admin (Non-Staff Costs)	2,741,694	2,587,335
Legal Fees & Audit Fees	53,596	65,144
Kids Can Achieve	202,992	170,619
Total	3,881,627	3,688,174

(c) Basis of indirect costs allocation

Activities	Basis of Allocation
CEO & Fundraising / Marketing (Staff Costs)	25% Fundraising, rest apportioned based on level of income
Finance (Staff Costs)	10% Fundraising rest apportioned based on level of income
Building & Property, HR, IT, Service Management & Training (Full Costs) and Fundraising / Marketing, CEO & Finance (Non-Staff Costs)	Apportioned based on level of income
Legal Fees & Audit Fees	Apportioned based on level of income
Kids Can Achieve	Staff Costs & Management Charges - 25% Fundraising, rest apportioned as direct cost based on level of income from charitable activities
	Non-Staff Costs, Legal Fees & Other Fees - Apportioned based on level of income from charitable activities

(d) Governance costs

Total governance costs for the year ended 31 March 2024 were £151,505 (2023: £158,946).

	2024 Total	2023 Total
LDN London	130,529	146,688
Kids Can Achieve	23,604	12,258
Total	154,133	158,946

	Group 2024	LDN London 2024	Group 2023	LDN London 2023
	£	£	£	£
6. STAFF COSTS COMPRISE				
Wages and Salaries	13,483,915	13,110,943	11,915,096	11,572,175
National Insurance	1,320,023	1,301,377	1,208,184	1,186,873
Pension & Life Assurance Costs	336,118	331,190	303,915	299,567
Redundancy & Termination Payments	28,479	28,479	-	-
Agency Staff Costs	1,706,767	1,661,686	2,376,517	2,341,267
Total Staff Costs	16,875,302	16,433,675	15,803,712	15,399,882

Group and Charity

The average weekly number of full time equivalent employees was:

	2024 Total	2023 Total
	Nos.	Nos.
Adult Housing & Respite Services	342	321
Community Services	27	27
Sessional	111	114
Other	38	40
Total LDN London	518	502
Kids Can Achieve	16	16
Total Group	534	518

The average number of employees was:

	2024	2023
	Nos.	Nos.
LDN London	469	442
Kids Can Achieve	33	31
Total Group	502	473

The number of employees receiving remuneration between the following bands was:

	2024	2023
	Nos.	Nos.
£110,000 and £120,000	1	-
£100,000 and £110,000	-	1
£90,000 and £100,000	1	-
£80,000 and £90,000	3	3
£70,000 and £80,000	-	-
£60,000 and £70,000	-	1

Pension costs in relation to these 5 employees was £50,467 (2023 - £42,913).

The aggregate cost of key management personnel in the year ended 2024 was £580,152 (2023: £514,221)

7. NET INCOME / (EXPENDITURE)

Net income / (expenditure) is stated after charging:

		2024 Total	2023 Total
		£	£
Depreciation of tangible fixed assets		265,375	260,804
Auditors remuneration	- Audit (excluding VAT)	30,100	30,750
Operating lease rentals	- Land and Buildings	149,716	144,961
	- Plant and Machinery	69,516	47,163

8a. TANGIBLE FIXED ASSETS - GROUP

	Freehold Land and Buildings	Leasehold Buildings	Motor Vehicles	Building Im- provements, Fixtures, Fittings and Computers	Total
	£	£	£	£	£
COST					
At 1 April 2023	1,795,327	946,659	85,474	1,870,534	4,697,994
Additions	-	-	-	41,394	41,394
Disposals*	-	-	(11,000)	(49,024)	(60,024)
At 31 March 2024	<u>1,795,327</u>	<u>946,659</u>	<u>74,474</u>	<u>1,862,904</u>	4,679,364
PROVISION FOR DEPRECIATION					
At 1 April 2023	581,014	390,946	73,180	1,251,926	2,297,066
Charge for the year	20,384	30,072	2,683	212,236	265,375
Depreciation on disposal *	-	-	(11,000)	(49,024)	(60,024)
At 31 March 2024	<u>601,398</u>	<u>421,018</u>	<u>64,863</u>	<u>1,415,138</u>	2,502,417
NET BOOK VALUE					
At 31 March 2023	<u>1,214,313</u>	<u>555,713</u>	<u>12,294</u>	<u>618,608</u>	2,400,928
At 31 March 2024	<u>1,193,929</u>	<u>525,641</u>	<u>9,611</u>	<u>447,766</u>	2,176,947

8b. TANGIBLE FIXED ASSETS - LDN LONDON

	Freehold Land and Buildings	Leasehold Buildings	Motor Vehicles	Building Im- provements, Fixtures, Fittings and Computers	Total
	£	£	£	£	£
COST					
At 1 April 2023	1,795,327	111,241	71,473	1,734,035	3,712,076
Additions	-	-	-	41,394	41,394
Disposals *	-	-	(11,000)	(49,024)	(60,024)
At 31 March 2024	<u>1,795,327</u>	<u>111,241</u>	<u>60,473</u>	<u>1,726,405</u>	3,693,446
PROVISION FOR DEPRECIATION					
At 1 April 2023	581,014	56,779	59,179	1,162,146	1,859,118
Charge for the year	20,384	2,225	2,683	202,604	227,896
Depreciation on Disposal *	-	-	(11,000)	(49,024)	(60,024)
At 31 March 2024	<u>601,398</u>	<u>59,004</u>	<u>50,862</u>	<u>1,315,726</u>	2,026,990
NET BOOK VALUE					
At 31 March 2023	<u>1,214,313</u>	<u>54,462</u>	<u>12,294</u>	<u>571,889</u>	1,852,958
At 31 March 2024	<u>1,193,929</u>	<u>52,237</u>	<u>9,611</u>	<u>410,679</u>	1,666,456

* Represents assets no longer in use or fully depreciated.

9. FIXED ASSET INVESTMENTS

Investments relate to the amounts which have been set aside by LDN London to fund part of the family services team, an LDN Community Engagement post and delivery costs, a Digital Development post and grants provided by the Alice Gestetner Fund. The funds are placed with discretionary investment managers.

	Group 2024	LDN London 2024	Group 2023	LDN London 2023
	£	£	£	£
Market Value at 1 April	7,895,500	7,895,500	8,464,870	8,464,870
Disposal proceeds	-	-	-	-
Additions at cost	-	-	-	-
Increase / (Decrease) in cash held in the portfolio	-	-	-	-
Unrealised & Realised Gains / (Losses)	633,455	633,455	(569,370)	(569,370)
Market Value at 31 March	<u>8,528,955</u>	<u>8,528,955</u>	<u>7,895,500</u>	<u>7,895,500</u>
Historical Cost at 31 March	<u>8,237,457</u>	<u>8,237,457</u>	<u>8,237,457</u>	<u>8,237,457</u>
Revaluation Reserve	<u>291,499</u>	<u>291,499</u>	<u>(341,957)</u>	<u>(341,957)</u>

		Group 2024	LDN London 2024	Group 2023	LDN London 2023
		£	£	£	£
Analysis of investments is as follows:					
UK	Fixed Interest	1,189,794	1,189,794	793,933	793,933
	Equities	1,018,838	1,018,838	1,103,599	1,103,599
	Cash	240,287	240,287	197,680	197,680
Overseas	Fixed Interest	809,844	809,844	932,855	932,855
	Equities	4,528,849	4,528,849	3,435,915	3,435,915
Commodities	Commodities	183,969	183,969	838,518	838,518
Other	Other	557,374	557,374	593,000	593,000
Total	Total	<u>8,528,955</u>	<u>8,528,955</u>	<u>7,895,500</u>	<u>7,895,500</u>

10. DEBTORS

	Group 2024	LDN London 2024	Group 2023	LDN London 2023
	£	£	£	£
Fees and grants receivable	1,807,894	1,701,989	1,101,444	1,034,757
Amounts owed by Group companies	-	-	-	-
Other debtors	14,339	14,339	8,206	8,207
Prepayments and accrued income	242,091	234,915	256,566	250,076
	<u>2,064,324</u>	<u>1,951,243</u>	<u>1,366,216</u>	<u>1,293,040</u>

11. CREDITORS - Amounts falling due within one year:

	Group 2024	LDN London 2024	Group 2023	LDN London 2023
	£	£	£	£
Loans	31,730	-	31,783	-
Trade creditors	610,289	584,793	859,818	838,488
Tax and Social Security	371,619	371,619	343,157	337,256
Accruals and deferred income*	1,576,992	1,246,644	1,212,184	889,443
	<u>2,590,630</u>	<u>2,203,056</u>	<u>2,446,942</u>	<u>2,065,187</u>

Accruals and deferred income includes a balance of £28,986 (2023: £26,791) that relates to deferred income. The movements on this balance can be reconciled as follows:

	Group	LDN London
	£	£
Opening Balance 1 st April 2023	26,791	7,511
less Income Recognition	(26,791)	(7,511)
add Deferred Income	28,986	4,236
Closing Balance 31 st March 2024	<u>28,986</u>	<u>4,236</u>

12. CREDITORS - Amounts falling due after more than one year:

	Group	LDN London	Group 2023	LDN London
	2024	2024	2023	2023
	£	£	£	£
Loans	<u>203,779</u>	<u>-</u>	<u>233,406</u>	<u>-</u>
Analysis of Loans				
Amount repayable within 5 years	86,950	-	103,827	-
Amount repayable after 5 years	148,559	-	161,362	-
	235,509	-	265,189	-
included in current liabilities	(31,730)	-	(31,783)	-
	<u>203,779</u>	<u>-</u>	<u>233,406</u>	<u>-</u>

Loan maturity analysis

In more than one year but not more than two years	12,153	-	30,782	-
In more than two year but not more than five years	43,067	-	41,262	-
In more than five years	148,559	-	161,362	-
	<u>203,779</u>	<u>-</u>	<u>233,406</u>	<u>-</u>

At 31st March 2024 loans totalling £235,509 have been secured by fixed and floating charges over Cedars Hall leasehold property. Interest on the loans will be charged at 3% over the Bank of England Base Rate per annum.

13. ANALYSIS OF MOVEMENT OF RESERVES

	1-Apr 2023	Income	Expenditure	Transfers Between Funds / Revaluation	Net Movement	31-Mar 2024
	£	£	£	£	£	£
Unrestricted General Funds	<u>89,427</u>	<u>19,910,815</u>	<u>(19,553,803)</u>	<u>(57,727)</u>	<u>299,284</u>	<u>388,712</u>
Unrestricted Designated Funds						
Investment Fund	7,298,650	259,595	(235,520)	576,523	600,598	7,899,248
Other Fixed Assets Fund	527,404	-	(205,287)	98,173	(107,114)	420,290
Property Fund	1,268,775	-	(22,609)	-	(22,609)	1,246,166
Small Grants Fund	370,238	14,182	-	6,147	20,330	390,568
	<u>9,465,067</u>	<u>273,777</u>	<u>(463,416)</u>	<u>680,843</u>	<u>491,205</u>	<u>9,956,272</u>
Restricted Funds						
Alice Gestetner Fund	226,611	8,741	(6,552)	10,339	12,528	239,139
LDN Hub Fund	26,970	55,292	(64,311)	-	(9,019)	17,951
Restricted Donations Fund	-	45,075	(45,075)	-	-	-
Kids Can Achieve	97,091	668,225	(660,560)	-	7,665	104,757
	<u>350,672</u>	<u>777,333</u>	<u>(776,498)</u>	<u>10,339</u>	<u>11,174</u>	<u>361,846</u>
Total Funds	<u>9,905,166</u>	<u>20,961,925</u>	<u>(20,793,717)</u>	<u>633,455</u>	<u>801,663</u>	<u>10,706,830</u>

For full 2023 comparatives see note 25

13. ANALYSIS OF MOVEMENTS OF RESERVES (continued)**Unrestricted Designated Funds**

The Investment Fund represents the designated investments held to provide funds to further the charitable aims of the LDN London. The income from this fund is spent directly on service provision.

The Other Fixed Assets Fund represents the net book value of motor vehicles, building improvements, fixtures and fittings and computers owned in full by LDN London, held in designated funds. This fund will be expended at the end of the depreciation periods.

The Property Fund represents the net book value of two freehold and two leasehold buildings owned by LDN London, held in designated funds. This fund will be expended at the end of the depreciation period.

The Small Grants Fund represents investments held to provide grants, normally up to £400, to people with learning disabilities and their families and carers to assist with the purchase of items such as holidays, beds, bedding and other household goods. The income from this fund is spent directly on these grants.

Restricted Funds

The Alice Gestetner Fund provides grants, normally up to £400, to people with learning disabilities and their families and carers to assist with the purchase of items such as furniture, white goods, clothes and toys, and where possible to help finance a holiday. The income from this fund is spent directly on these grants.

The LDN Hub Fund represents various donations and funds raised towards the activities and sessions at the LDN Community Engagement Hub. It is expected that this fund (£17,951) will be used over the next year but it is expected that new funds will be raised for future years during 2024/25.

The Restricted Donations Fund represent a number of donations that were received where donors specified what the funds should be spent on. This fund has been fully expended but it is expected that new funds will be received during 2024/25.

The Kids Can Achieve Fund represents the total of funds held by KCA. It is expected that these funds will increase over the coming years. The funds are shown as restricted funds as the objects of KCA are narrower than those of LDN London.

Transfers Between Funds / Revaluation

Transfers and revaluations in the Unrestricted Designated Funds and Restricted Funds relate to capital expenditure and the net gains and losses on our investments.

14. ANALYSIS OF NET ASSETS BETWEEN FUNDS

	Unrestricted General Funds	Unrestricted Designated Funds	Restricted Funds	2024 Total Funds	2023 Total Funds
	£	£	£	£	£
Funds at 31 March 2024 are represented by:					
Tangible fixed assets	-	1,666,456	510,491	2,176,947	2,400,927
Investments	-	8,289,816	239,139	8,528,955	7,895,500
Net current assets / (liabilities)	388,712	-	(184,005)	204,707	(157,855)
Long term liabilities	-	-	(203,779)	(203,779)	(233,406)
Total Net Assets	388,712	9,956,272	361,846	10,706,830	9,905,166
Tangible fixed assets 2023	56,779	1,796,178	547,970		2,400,927
Investments 2023	-	7,668,889	226,611		7,895,500
Net current assets / (liabilities) 2023	32,648	-	(190,503)		(157,855)
Long term liabilities 2023	-	-	(233,406)		(233,406)
Total Net Assets 2023	89,427	9,465,067	350,672		9,905,166

15. CONDUIT FUNDS

LDN London act as appointee for a number of people who use our services and as part of that role we have opened individual bank accounts in which we hold funds on their behalf. At 31st March 2024 we had 40 separate accounts holding a total of £641,687 of funds which are not included in the balance sheet of the LDN London.

	Group	LDN London
	£	£
Opening balance at 01/04/23	694,554	694,554
Amounts received on their behalf	517,022	517,022
Amounts expended on their behalf	(569,889)	(569,889)
Closing balance at 31/03/24	<u>641,687</u>	<u>641,687</u>

16. TAXATION

Both LDN London and Kids Can Achieve Limited's charitable activities are exempt from taxation under the Corporation Tax Act 2010.

17. PENSIONS

LDN London has a defined contribution pension scheme administered The Pension Trust. The scheme is open to new members in which up to 10% matched contributions are made, as long as they are permanent employees of LDN London. At the year end £69,907 of contributions were outstanding (2023 : £64,686).

The scheme is in deficit and LDN London has agreed to a deficit funding arrangement. The amount recognised is the net present value of the deficit reduction contributions payable under the agreement that relates to the deficit. The present value is calculated using the discount rate detailed in these disclosures.

At 31st March 2024, the pension deficit liability was £5,513 (2023 : £11,803).

Kids Can Achieve Limited has a defined contribution pension scheme administered by The Pension Trust. The scheme is open to new members in which 3% matched contributions are made, as long as they are permanent employees of the charity. At the year end £1,162 of contributions were outstanding (2023 : £1,273).

18. TRUSTEES' INTERESTS

No Trustee has received any remuneration for the year ended 2024 (2023 : Nil). Trustees received no reimbursed expenditure during the year (2023 : Nil).

19. OPERATING LEASE COMMITMENTS

Total amounts payable in respect of operating leases are as follows:

	less than 1 year	1 to 5 years	over 5 years	31-Mar 2024	31-Mar 2023
	£	£	£	£	£
Land and Buildings (LDN London)	42,159	-	-	42,159	138,004
Plant and Machinery (LDN London)	31,213	74,861	19,225	125,299	66,158
Land and Buildings (Group)	72,159	168,000	504,000	744,159	861,004
Plant and Machinery (Group)	33,265	79,306	19,225	131,796	74,707

Lease payments recognised as an expense in the year ended 31 March 2024 was £202,557 (2023: £192,193)

20. RELATED PARTIES

No management fee was charged by LDN London to Kids Can Achieve Ltd during the year (2023: Nil). There were no other related party transactions during the year (2023: Nil).

21. MEMBERSHIP

LDN London is incorporated as a company limited by a guarantee and does not have share capital.

The members of the LDN London are the serving Trustees. The members' liability is limited; each member of LDN London agrees to contribute up to £1 to the assets of LDN London in the event of it being wound up. At 31st March 2024 there were 13 members (2023: 9 members).

Kids Can Achieve Limited is incorporated as a company limited by a guarantee and does not have share capital.

The members' liability is limited; each member of Kids Can Achieve agrees to contribute up to £10 to the assets of the charity in the event of it being wound up. At 31st March 2024 there was 1 member (2023: 1 member).

22. FUNDRAISING

LDN London has a small team, which organises fundraising events, and employs a manager, who oversees grant and trust applications as well as corporate support and funding. We have a charter in which we commit to high standards of raising funds. All who are kind enough to support us can be reassured that we do not use intrusive fundraising practices and we value every penny provided to us to fulfil our ambitions for learning disabled Londoners. The full Charter is published on the website. No complaints have been received in respect of fundraising.



23. COMPARATIVE STATEMENT OF FINANCIAL ACTIVITIES AND INCOME AND EXPENDITURE ACCOUNT (2023)

	Unrestricted General Funds	Unrestricted Designated Funds	Restricted Funds	Total Funds 2023	<i>Total Funds 2024</i>
	£	£	£	£	£
INCOME FROM					
Income from donations and legacies:					
Donations and Legacies	7,547	-	17,611	25,158	36,914
Fundraising	-	-	26,176	26,176	12,274
Income from charitable activities:					
Adult Housing & Respite Services	16,795,222	-	3,764	16,798,986	18,486,549
Community Services	1,269,330	-	38,918	1,308,248	1,406,241
Kids Can Achieve	-	-	600,134	600,134	651,118
Investments	4,984	262,046	8,428	275,458	295,277
Income from other trading activities	69,567	-	7,970	77,537	73,552
Total income (2023)	<u>18,146,650</u>	<u>262,046</u>	<u>703,001</u>	<u>19,111,697</u>	<u>20,961,925</u>
<i>Total income (2024)</i>	<u>19,910,815</u>	<u>273,777</u>	<u>777,333</u>	<u>20,961,925</u>	
EXPENDITURE ON					
Expenditure on raising funds:					
Income Generation Costs	186,482	-	4,488	190,970	205,922
Voluntary Fundraising Costs	-	-	12,032	12,032	-
Expenditure on charitable activities:					
Adult Housing & Respite Services	17,038,075	249,958	6,205	17,294,238	18,385,525
Community Services	1,125,384	84,359	87,108	1,296,851	1,557,754
Kids Can Achieve	-	-	593,112	593,112	644,516
Total expenditure (2023)	<u>18,349,941</u>	<u>334,317</u>	<u>702,945</u>	<u>19,387,203</u>	<u>20,793,717</u>
<i>Total expenditure (2024)</i>	<u>19,553,803</u>	<u>463,416</u>	<u>776,498</u>	<u>20,793,717</u>	
Net (expenditure) before net gains / (losses) on investments (2023)	(203,291)	(72,271)	56	(275,506)	168,208
<i>Net (expenditure) before net gains / (losses) on investments (2024)</i>	<u>357,012</u>	<u>(189,639)</u>	<u>835</u>	<u>168,208</u>	
OTHER GAINS AND LOSSES					
Net gains / (losses) on investments	-	(551,226)	(18,144)	(569,370)	633,455
NET INCOME / (EXPENDITURE)	(203,291)	(623,497)	(18,088)	(844,876)	801,663
Transfers between funds	(292,183)	294,124	(1,941)	-	-
NET MOVEMENT IN FUNDS	<u>(495,474)</u>	<u>(329,372)</u>	<u>(20,028)</u>	<u>(844,876)</u>	<u>801,663</u>

24. COMPARATIVE ANALYSIS OF SUPPORT COSTS (2023)

	Staff Costs	Deprecia- tion	Other	2023 Total	2024 Total
	£	£	£	£	£
EXPENDITURE ON					
Analysis of support costs					
<i>Raising funds</i>					
- Income Generation Costs (LDN London)	186,482	-	-	186,482	189,878
- Income Generation Costs (Kids Can Achieve)	4,488	-	-	4,488	16,044
- Voluntary Fundraising Costs	-	-	12,032	12,032	-
<i>Charitable activities</i>					
- Adult Housing & Respite Services	14,142,763	205,370	2,946,105	17,294,238	18,385,525
- Community Services	1,070,638	17,955	208,258	1,296,851	1,557,754
- Kids Can Achieve	399,341	37,479	156,292	593,112	644,516
Total expenditure (2023)	15,803,712	260,804	3,322,687	19,387,203	20,793,717
<i>Total expenditure (2024)</i>	<i>16,875,302</i>	<i>265,375</i>	<i>3,653,040</i>	<i>20,793,717</i>	
		Direct Cost	Indirect Cost	2023 Total	2024 Total
		£	£	£	£
<i>Raising funds</i>					
- Income Generation Costs (LDN London)		-	186,482	186,482	189,878
- Income Generation Costs (Kids Can Achieve)		-	4,488	4,488	16,044
- Voluntary Fundraising Costs		12,032	-	12,032	-
<i>Charitable activities</i>					
- Adult Housing & Respite Services		14,163,029	3,131,209	17,294,238	18,385,525
- Community Services		1,096,987	199,864	1,296,851	1,557,754
- Kids Can Achieve		426,981	166,131	593,112	644,516
Total expenditure 2023		15,699,029	3,688,174	19,387,203	20,793,717
<i>Total expenditure (2024)</i>		<i>16,912,091</i>	<i>3,881,626</i>	<i>20,793,717</i>	

25. COMPARATIVE ANALYSIS OF MOVEMENT OF RESERVES (2023)

	1-Apr 2022 £	Income £	Expenditure £	Transfers Between Funds /Re- valuation £	Net Movement £	31-Mar 2023 £	31-Mar 2024 £
Unrestricted General Funds	288,612	18,146,650	(18,349,941)	4,106	(199,185)	89,427	388,712
Unrestricted Designated Funds							
Investment Fund	7,819,886	248,172	(110,991)	(658,417)	(521,236)	7,298,650	7,899,248
Other Fixed Assets Fund	577,874	-	(200,717)	150,247	(50,470)	527,404	420,290
Property Fund	1,291,384	-	(22,609)	-	(22,609)	1,268,775	1,246,166
Small Grants Fund	400,229	13,874	-	(43,865)	(29,991)	370,238	390,568
	<u>10,089,373</u>	<u>262,046</u>	<u>(334,317)</u>	<u>(552,035)</u>	<u>(624,306)</u>	<u>9,465,067</u>	<u>9,956,272</u>
Restricted Funds							
Alice Gestetner Fund	244,755	8,428	(5,131)	(21,441)	(18,144)	226,611	239,139
LDN Hub Fund	33,438	72,695	(79,162)	-	(6,467)	26,971	17,951
Rainbows Fund	14,354	-	(14,354)	-	(14,354)	-	-
Restricted Donations Fund	-	6,698	(6,698)	-	-	-	-
Kids Can Achieve	79,510	615,180	(597,600)	-	17,580	97,091	104,756
	<u>372,057</u>	<u>703,001</u>	<u>(702,945)</u>	<u>(21,441)</u>	<u>(21,385)</u>	<u>350,672</u>	<u>361,846</u>
Total Funds 2023	<u>10,750,042</u>	<u>19,111,697</u>	<u>(19,387,203)</u>	<u>(569,370)</u>	<u>(844,876)</u>	<u>9,905,166</u>	<u>10,706,830</u>
<i>Total Funds 2024</i>	<i>9,905,166</i>	<i>20,961,925</i>	<i>(20,793,717)</i>	<i>633,456</i>	<i>801,664</i>	<i>10,706,830</i>	

26. SUBSIDIARY CHARITY

LDN London is sole member of Kids Can Achieve Limited (Charity Number: 1096796, Company Number: 4606116). Kids Can Achieve is a charitable company registered in England and Wales.

It's financial performance and balance sheet is summarised as follows:

	2024 £	2023 £
Income / (Expenditure):		
Income	668,225	615,180
Expenditure	(660,560)	(597,600)
Net income (expenditure)	7,665	17,580
Net assets consist of:		
Fixed assets	510,491	547,970
Current assets	185,617	164,282
Current liabilities	(387,573)	(381,755)
Long term liabilities	(203,779)	(233,406)
Total net assets	104,756	97,091
Reserves:		
Unrestricted General Funds	119,723	96,008
Unrestricted Designated Funds	(17,318)	(6,417)
Restricted Funds	2,351	7,500
Total Funds	104,756	97,091



Learning Disability Network London

16a Croxley Road
W9 3HL
London

020 8968 7376
hello@ldnlondon.org

Charity number: 801081

www.ldnlondon.org