

CHARITY COMMISSION  
FIRST CONTACT

19 SEP 2024

ACCOUNTS  
RECEIVED

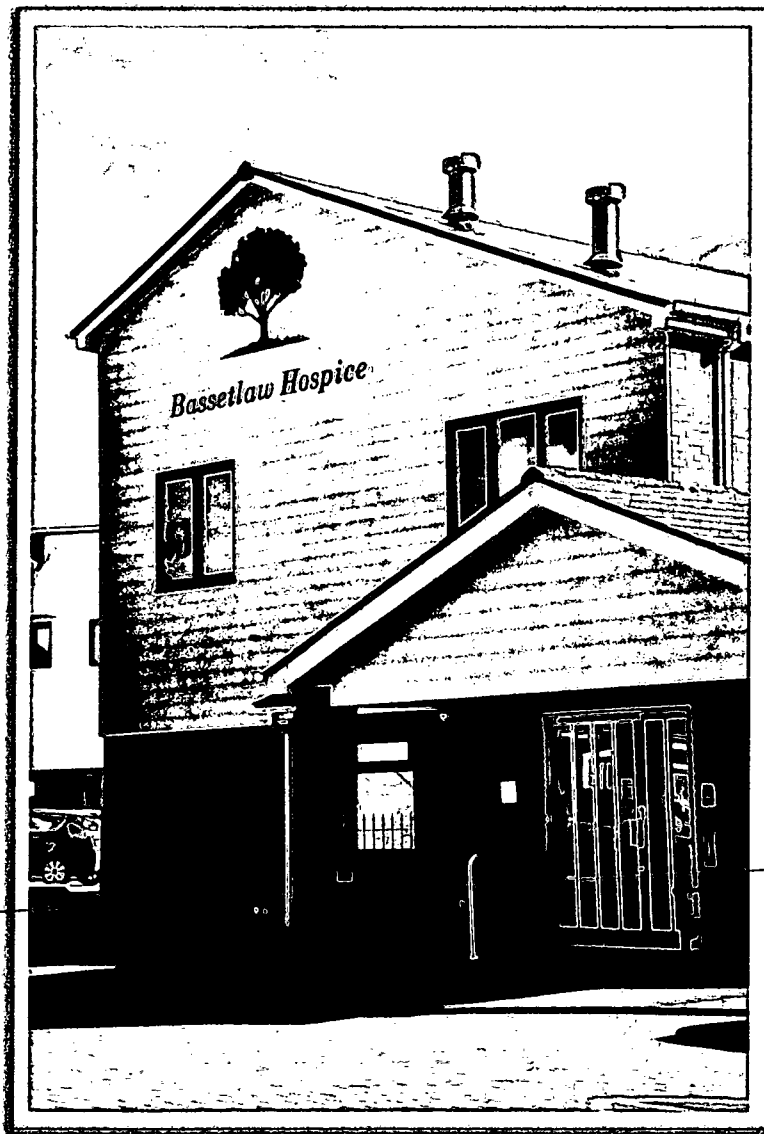


**Bassetlaw Hospice**

Working within the community to provide Hospice Care

**TRUSTEE REPORT AND FINANCIAL STATEMENTS**

**FOR THE YEAR ENDED 31<sup>ST</sup> MARCH 2024**



Registered Charity Number: 701876

**BASSETLAW HOSPICE OF THE GOOD SHEPHERD**  
REPORT OF THE TRUSTEES  
FOR THE YEAR ENDING 31<sup>ST</sup> MARCH 2024  
REGISTERED CHARITY NUMBER 701876

**CONTENTS**

	<b>Page</b>
<b>A Message from the Chairman</b>	<b>1</b>
<b>Report of the Trustees</b>	
Objectives and activities for the public benefit	2
A review of our achievements and performance	3-6
Volunteers	6-7
Fundraising	7
Financial summary	8-9
Risk management	9-10
Structure, Governance & Management	10-12
<b>Report of the Independent Auditors</b>	<b>13-15</b>
<b>Statement of Financial Activities</b>	<b>16</b>
<b>Statement of Financial Position</b>	<b>17</b>
<b>Statement of Cash Flows</b>	<b>18</b>
<b>Notes forming part of the Financial Statements</b>	<b>19-30</b>
The following pages do not form part of the statutory accounts:	
<b>Analysis of Statement of Financial Activities</b>	<b>31-33</b>

**BASSETLAW HOSPICE OF THE GOOD SHEPHERD**  
REPORT OF THE TRUSTEES  
FOR THE YEAR ENDING 31<sup>ST</sup> MARCH 2024  
REGISTERED CHARITY NUMBER 701876

**A MESSAGE FROM THE CHAIRMAN**



This year has seen things return to a more even keel following the transition from Covid effects last year. Support and wellbeing is virtually fully functional. Inpatients continue to be cared for as normal thanks to our dedicated team.

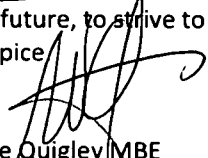
2024 was a milestone for the Hospice and we celebrate our 30th birthday. We were able to have an official opening of the newly developed facilities and building delayed by Covid. We are extremely grateful to Sir John Peace for officiating in what was one of his last duties before retiring from his role as Lord Lieutenant of Nottinghamshire.

New fundraising initiatives have been organised including the Ingleborough Challenge and Snowdon which raised £5,000 from 14 participants that climbed Snowdon and raised the much-needed funds to support our work. A Grand Prize Draw has been organised and the Draw will take place in September.

We celebrated our volunteers during National Volunteers Week by offering them complementary treatments, coffee and cake, served by the Charity Operations Manager. Our therapist volunteered her time to help us thank our valuable volunteers.

We have had several meetings with the ICB and others to discuss and formulate how the service develops and goes forward in the future.

I would as ever like to thank our board of trustees, charity staff, ~~nursing and hospice staff and not forgetting our volunteers for their continued~~ hard work and commitment. We will continue now and, in the future, to strive to provide the highest level of care that has always been at the heart of Bassetlaw Hospice.

  
Mike Quigley MBE  
Chairman of Trustees

**BASSETLAW HOSPICE OF THE GOOD SHEPHERD**  
REPORT OF THE TRUSTEES  
FOR THE YEAR ENDING 31<sup>ST</sup> MARCH 2024  
REGISTERED CHARITY NUMBER 701876

The Trustees present their annual report together with the financial statements of the charity for the year ended 31<sup>st</sup> March 2024. The financial statements have been prepared in accordance with the accounting policies set out in note 1 to the accounts and comply with the charity's trust deed, The Charities Act 2011, accounting and reporting by Charities: Statement of Recommended Practice applicable to charities preparing their accounts in accordance with the Financial Reporting Standard applicable in the UK and the Republic of Ireland (FRS 102) (effective 1<sup>st</sup> January 2019)

**Objectives and activities for the public benefit**

**Objectives**

The objectives of the charity are to raise funds to provide hospice care to the residents of Worksop, Retford and the surrounding area which is known as Bassetlaw. Situated in the county of Nottinghamshire and to work with other healthcare providers in the development and provision of palliative care.



**Beneficiaries and public benefit**

The activities undertaken by the charity provide a benefit to all the people of Bassetlaw who have a need of palliative care, subject to limitations imposed by the number of places available. The charity's activities are not considered to cause any adverse effects to any members of the public. Any personal benefits gained by persons other than those receiving the care is considered to be incidental to the work of the charity.

**Charity Commission**

The Trustees consider these objectives continue to provide public benefit for the local community by ensuring the availability of this care. They have referred to the Charity Commission's general guidance of public benefit when reviewing the aims and objectives and in planning the Charity's future activities.

**Charitable activities**

Under Licence, approved by the Charity Commission, the nursing and medical costs of the service are funded directly by Nottinghamshire Healthcare NHS Foundation Trust ("Service Provider"). The charity is responsible for all additional patient services including complimentary therapy, hairdressing, diversional therapy and patient transport. The maintenance, replacement and repair of the building, gardens and fixtures and fittings, the insurance and running costs are all funded by the charity. The charity also funds a number of other services both clinical and non-clinical, to support the hospice and the services we provide.



**BASSETLAW HOSPICE OF THE GOOD SHEPHERD**  
REPORT OF THE TRUSTEES  
FOR THE YEAR ENDING 31<sup>ST</sup> MARCH 2024  
REGISTERED CHARITY NUMBER 701876

**A review of our achievements and performance**

**In Patient Unit – IPU**

The unit is led by Advanced Nurse Practitioners with an experienced team of qualified nursing and care staff, supported by a Palliative Care Consultant, Occupational Therapist, Physiotherapist and Accredited Counsellor. The team provide individualised care and support for patients to help manage symptoms for patients with a life limiting illness. There is also care for those at the end of life with calm dignified care and support for relatives and carers during this time.

The individual bedrooms have en-suite facilities and direct access to the private and tranquil gardens, having this available aided us greatly with visiting, as access to rooms have been via the private entrances to bedrooms, enabling us to minimise the footfall through the hospice as and when needed. Each room has air conditioning, a fully adjustable bed, smart TV and telephone.



All patient rooms are smart functioning, enabling patients to use the smart TVs to run Netflix, YouTube and all other available functions. We have Amazon Alexa's in every bedroom, improving patient independence by allowing patients to play music, listen to stories, tell the time and even turn the lights on/off and change the colour to suit their mood. Promoting patient independence is a vital part of a patients journey within the hospice and it is an element that we all embrace.

This year the charity has finished replacing all the old furniture in the communal rooms, enabling us to open the rooms to patients and their families as well as the staff. It is in the communal room where our newly designed Jolly Trolley lives, this is a trolley full of diversional therapies that are available to patients.

**The Support and Wellbeing Centre**

The Support and Wellbeing team, work with people who are living in our community and are experiencing long term and life limiting conditions. They offer nursing support, occupational therapy, counselling, and complimentary therapy to support the physical, psychological, social, and spiritual wellbeing of the patients. The team compliment and work closely with other healthcare professionals involved in the care of the patient to ensure that the care is proactive and seamless.

The Support and Wellbeing Centre is here to help patients feel better, stay well and to achieve their own personal goals through supporting patients to be as independent as possible, manage symptoms and support the patient to identify and achieve goals despite the challenges they may be facing. The team also provides support to relatives and carers through couples counselling, bereavement support and carer support groups.

The board continues to work with the service provider to develop new ways to enhance the provision of palliative care in Bassetlaw. This year we have been developing our legacy projects, these capture special memories for families to treasure. We have a lot of different activities available including, hand castings, voice recordable bears, memory-boxes and we now have our oral histories, thanks to a wonderful volunteer called Colin. This wonderful piece of work captures patients' life stories, their legacy to be passed on to their family. An example can be found on the Bassetlaw Hospice YouTube channel.



**BASSETLAW HOSPICE OF THE GOOD SHEPHERD**  
REPORT OF THE TRUSTEES  
FOR THE YEAR ENDING 31<sup>ST</sup> MARCH 2024  
REGISTERED CHARITY NUMBER 701876

**Update from Hospice Team Leader – Adele Barker**

It is a pleasure to offer up an update from my perspective once again for this year's annual report. As always, there has been some positive changes and some challenges.

Firstly I would like to mention the staff who work tirelessly to keep the service running to CQC standards – Safe, effective, caring, responsive, and well led. They do this despite huge gaps in all areas of staffing and minimal resources. In the past year, we have had a freeze on vacancies, a block on ordering a lot of resources including stationary and are generally in a worrying position within the trust. It is credit to the whole team that this has not transferred into the care that we give, or the service we run.

We continue to strengthen the bonds with JEH staff who have been instrumental in filling our staffing gaps and helping to keep the service running safely.

We have successfully recruited to all vacancies we have been able to put out with many applications – this is a real positive that Bassetlaw Hospice is a sought after area to work. We regularly boast about our services and that we work collaboratively with the charity/ trustees and are well supported by the charity.

We have run some very successful community events and are making headway in busting the stigma of the hospice, this important and exciting work continues in many ways, collaboratively between myself and Bonney.

We continue to run with an excellent reporting culture and learn well from incidents, risks, compliments, and complaints. We have established and developed safety huddles, between shift checks, made alterations to drug stock, worked with pharmacy to improve pharmacy services along with many important changes to ensure we are developing and addressing risks and needs.

The therapy team have faced challenges with gaps and long term sickness but the assistant practitioner (AP) has been vital in keeping therapy running in the absence of the physio (PT) and Occupational therapist (OT). She has been a positive addition to the team, and we look forward to seeing her grow professionally and expand the services along with our PT.

I could not write an annual report without mentioning the kitchen and domestic staff along with the wider teams who continue to provide an amazing service and are integral to the patient journey.

We have a lot of proud moments this year but to name a couple:

- Our first legacy video and links to other patients who are interested in joining in
- Visit from penguins to help a patient tick off items on her bucket list.
- Spa night for one of our patients
- Multiple movie/ family nights for our patients and their families to enjoy each others company in different ways.
- Community event – easter egg hunt, introduced community into the hospice.
- Therapy networking event – aligning services in Bassetlaw to improve patient journey.
- Offering the SWC to the pulmonary rehab team so that their patients can step foot into the hospice – this has led to referrals but more importantly, patients feeling more comfortable entering the building.
- Liaising with chaplaincy to increase the resources and support into Bassetlaw Hospice.
- Trial of a cuddle beds, recliner chairs and eco mist system.

**BASSETLAW HOSPICE OF THE GOOD SHEPHERD**  
REPORT OF THE TRUSTEES  
FOR THE YEAR ENDING 31<sup>ST</sup> MARCH 2024  
REGISTERED CHARITY NUMBER 701876

Last years "Going forward our aspirations" and the Responses are:

- Get suitable furniture throughout – E.g., visitors' chairs, furniture for the relatives' room, communal rooms. *All areas have lovely furniture in keeping with the décor and complies with fire and IPC safety.*
- Get some artwork around the building to make it more cheerful. *We display the patients' artwork on rotation, have added a cheerful staff board with pictures and Bonney continues to work with community teams to get some art for the rest of the hospice. We have had some art work donated that is awaiting its perfect home.*
- Build on our community events at the hospice to bust the stigma and increase engagement. *We have run some wonderful events but these are unfortunately paused due to staffing. Once staffing improves, these will restart.*
- Offer more palliative care tailored training, ensuring our staff feel invested in. *We have invested in a game to break the ice for other teams coming to us for basic palliative care training. Unfortunately, staffing issues have severely impacted on this aspiration.*
- Continue to deliver excellent patient care. Celebrate the positive feedback more and learn from any negative feedback. *We now log our compliments on our Ulysses system so that positive feedback is also fed into the governance systems.*

#### **Our place in the community**

Now in our 30<sup>th</sup> year, our objectives as a charity remains the same, to raise funds for the provision of hospice care for the people of Bassetlaw. We continue to work closely with local healthcare providers including MacMillan, GP Surgeries, Hospitals and Care Homes in the development of a palliative care service to meet the needs of the patients and their loved ones at what is always a very difficult time in their lives.

This year we officially re-opened the hospice, this was delayed due to Covid however we felt it well suited as we entered our 30<sup>th</sup> year.

Going into the next financial year, there will be celebrations to mark the success of providing specialist palliative care to the community of Bassetlaw for a remarkable 30 years.

#### **Building for the future**

This year we have been working on our legacy projects which have been really meaningful for patients and their families. This is a way to digitally capture a patient's life story on video with interactive illustrations highlighting a person's family tree or places where they used to live. Colin is also able to use his skills to bring old photographs back to life and incorporate them into the videos. We are very proud of this opportunity that we can offer our families.



~~We are taking part in the National Hospice UK legacy campaign.~~ The campaign will be launched in 2025. This is to raise awareness of the importance and impact of being left a gift in a will and how legacies help secure the future of the hospice.

This year we have been able to continue the development of the charity's website. We are very pleased with the outcome and the feedback that we have received. The site is attractive, user friendly and interactive, allowing users to navigate between pages. The website hosts online forms, allowing users to sign up as volunteers, join as Friends of the Hospice and get involved in fundraising. This year we have introduced a Support and Wellbeing online referral page which allows patients and families to refer into the service directly. This is to make access to the hospice even easier for the community of Bassetlaw.

**BASSETLAW HOSPICE OF THE GOOD SHEPHERD**  
REPORT OF THE TRUSTEES  
FOR THE YEAR ENDING 31<sup>ST</sup> MARCH 2024  
REGISTERED CHARITY NUMBER 701876

**Volunteers**

We are incredibly fortunate to have a wonderful team of volunteers whose commitment and hard work is invaluable to the charity, volunteers enhance the services that the charity provides and this year during lockdown we have been able to review the roles of our volunteers.

There are a variety of roles at the hospice, these include:

**Support and Wellbeing Centre**

Befriending patients  
Serving drinks and meals  
Assisting with arts, crafts and therapies  
Leading on interactive activities

**Kitchen**

Assisting the catering team  
Serving meals  
General kitchen duties



**Drivers**

Drivers collect and return home patients attending Support and Wellbeing Centre  
Volunteers must have a four door car with full comprehensive insurance  
A mileage allowance is paid.

**Meet and Greet - Face of the Hospice**

Volunteers welcome and assist patients and visitors to the Hospice.  
Show patients to the Support and Wellbeing Centre  
Show visitors to the IPU  
Support our Ward Clerk and Charity Operations Manager

**Digital Marketing**

Support the development of our social media platforms  
Blog writing  
Website improvements  
Increase brand awareness  
promotion of virtual fundraising  
Newsletter development

**Gardening**

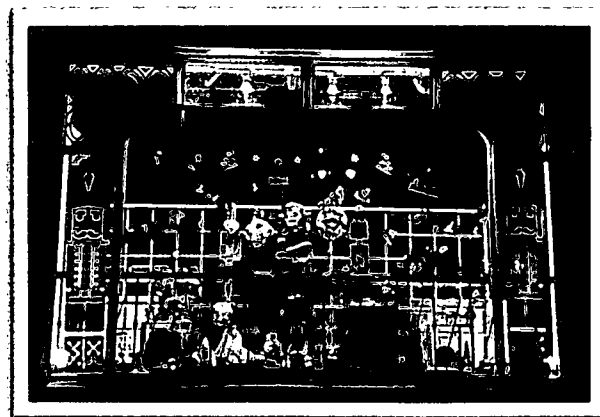
Volunteers assist the gardening team with weeding, planting, and general garden maintenance.

**Retail Opportunities**

Receiving, sorting and preparing stock for sale  
Displaying and selling donated stock  
Serving customers  
Serving in the Hospice Tea Bar located in Retford Hospital

**Fundraising Opportunities**

Selling raffle tickets  
Baking cakes to sell at fundraising events  
Helping with supermarket collections or bag packing  
Staffing a stall at an event  
Serving refreshments  
Assisting at our organised events



**BASSETLAW HOSPICE OF THE GOOD SHEPHERD**  
REPORT OF THE TRUSTEES  
FOR THE YEAR ENDING 31<sup>ST</sup> MARCH 2024  
REGISTERED CHARITY NUMBER 701876

Our events in the community, which are often at weekends or in the evenings have previously proven popular with people who are employed but want to give something back to the community. Many of our volunteers provides crafts, bake cakes and support the charity with donations and contributions: they are all part of the hospice team and as a board we thank them immensely. The time given by volunteers, if calculated in terms of salary, would amount to thousands of pounds and without their help and support it would not be possible to maintain the high standards of care or generate the income required.

As a charity we are continuing to run recruitment drives for volunteers and we are impressed with the outcome so far.

**Fundraising**

The local community have always been ready to support not only the events that our team organise but also to arrange their own unique ways to raise funds for the hospice and this year is no exception to that.

Debbie, our Community Fundraiser is always on hand to help provide support and guidance to individuals, businesses, clubs and organisations who generously use their own contacts to raise funds for the charity.

The Fundraising subcommittee, consisting of trustees, staff, nursing staff and members of the public who meet at least 4 times a year to plan, develop and review in-house and community fundraising events. The charity's aim is not only to provide income but to engage with our supporters and ensure the profile of the hospice continues to remain as an active and important element within Bassetlaw and the community it serves.

The highlights this year include: Ingleborough high and low challenge. We also continue with our Afternoon Tea Party, which took place in the museum gardens with 65 attendees, Tie a yellow ribbon event at Bamby Moor, Ladies Lunch, Easter Fayre, Christmas Fayre and our Christmas star ribbon, which was linked with the grief awareness week. This year we had quiz night with pie and peas at the hospice which was very popular. In line with it being our 30<sup>th</sup> Birthday, we are holding a Grand Prize Draw this year, it will be drawn in September 2024. We have been donated some wonderful prizes to help us raise as much income as possible.



**Retail**

This year the shops continued to undergo a lot of changes, including the continuation of Gift Aid. As a policy we only sell items donated by the local community. The volunteers have embraced the opportunity to be open and we are always grateful for the quality donations that we receive and would like to take this opportunity to say thank you to our hard-working volunteers and to the community for their ongoing support.

The Tea Bar at Retford Hospital has really started to bloom again, we have even used this resource to launch a tuck box in the Hospice which is very popular with staff and visitors.



**BASSETLAW HOSPICE OF THE GOOD SHEPHERD**  
REPORT OF THE TRUSTEES  
FOR THE YEAR ENDING 31<sup>ST</sup> MARCH 2024  
REGISTERED CHARITY NUMBER 701876

### **Financial Summary**

The charity has to report a loss for the year of £83,077 before investment gains/(losses). This compares to a surplus in the previous year of £53,495. The loss is after taking into account legacies and donations of £191,831 compared to £272,211 for the previous year. Legacies are a very important source of income for the charity and the trustees are forever grateful to those families that leave a bequest at, what can often be, a very difficult time for all concerned. The charity has joined a Hospice UK programme for improving legacies.

The total value of available unrestricted funds, including investments, at the end of the financial year is £6,731,598 compared to £6,529,659 at the previous financial year end. The cash position, included in total funds, is £183,631 (2022: £247,726)

The charity continues to delegate the management of its investment portfolio to professional independent fund managers Rathbones, who manage the charity's investment portfolio within predetermined parameters of asset class and risk. Financial markets are not immune from the effects of global events and recent years have seen significant movement in fund values and returns. As a result this year Rathbones departed from its formula of 80+% in equities to take advantage of gilts and other fixed interest bonds with this element of the portfolio reaching 35+% at times. As a consequence there was a £201,939 positive movement in net funds compared to a reduction of £301,458 for the previous year

The combined income from the shops in Retford and Worksop at £87,066 was similar to last year and slightly below budget. Both shops are fully staffed thanks to a wonderful number of volunteers. It is these volunteers across all areas of the charity that make working in and running the charity so rewarding.

As ever our principal funding source remains the people of Bassetlaw whose generosity allows us to continue to develop and deliver a high level of hospice service. The trustees and staff will continue to monitor closely the trading results and balance sheet and continue to operate a strong system of budgetary control with set authority levels and as a result all costs strictly controlled.

The cost of raising funds for the charity was similar to last year allowing for inflation. Charitable activities were down on the previous year by £42,613 mainly due to funding of non medical NHS costs. It is worth mentioning here that a fully detailed glossary of accounts are reviewed by the trustees on a monthly basis.

### **Events after the end of the reporting period**

The newly formed Integrated Care Board for Nottinghamshire has undertaken a detailed review of Palliative Care and End of Life Pathway. This has included how to manage the cost of £500,000 to meet the shortfall in the cost of providing the care the Notts Area Health can afford and the level of service the ICB can fund.

Bassetlaw Hospice is not alone in feeling this squeeze and there is an alliance of Mid Notts Hospice Charities that are investigating ways this can be managed without dramatically affecting the service offered by Bassetlaw Hospice and other similar hospice charities.

This Alliance sits as a board and Bonney Baggaley is the Hospice Board member. At the beginning of this year the Hospice elected to join the Alliance and its focus is "fast tracking" the combined hospice spare bed capacity to meet the requirements of Nottinghamshire NHS.

### **Going concern**

The Trustees have considered the financial position of the charity and in consideration of the information available to them are satisfied that the charity is a going concern for the foreseeable future and in any case for at least 12 months from the date of this report.

**BASSETLAW HOSPICE OF THE GOOD SHEPHERD**  
REPORT OF THE TRUSTEES  
FOR THE YEAR ENDING 31<sup>ST</sup> MARCH 2024  
REGISTERED CHARITY NUMBER 701876

**Investment policy**

The trustees have placed voluntary restrictions on the investments which can, with the agreement of the board be changed at any time.

Considering the current economic climate, the board are satisfied with the current performance of the portfolio. The board receives an annual presentation from Rathbones to discuss the strategy and consider the external factors affecting the performance of the portfolio.

**Reserves policy**

The reserves policy is reviewed annually, and it is the policy of the charity to:

- Strike a balance between financial prudence and investment in facilitating quality services
- Maintain unrestricted funds which are available for general use and equate to approximately two years hospice operating expenditure
- Hold sufficient reserves to cover the work impact of a negative event. This is currently set at £1.0m
- To hold appropriate designated reserves for strategic and capital projects as determined on an annual basis
- Where required hold restricted funds in accordance with specific restrictions either by the wishes of the donor or by the donor or by the nature of the appeal.
- To hold, at all times, liquid assets to provide operational working capital and to ensure cash balances never fall below £250,000

**Risk management**

The trustees have a duty to identify and review the risks to which the charity is exposed and to ensure appropriate controls are in place to provide reasonable assurance against fraud and error.

They actively review the major risks which are classified as constitutional, financial, operational and external which the charity faces on a regular basis and which may impact on the service the charity aims to provide.

**Constitutional** - The trustees believe that procedures are in place to cover any risk which may arise regarding constitutional or governance matters.

**Financial** - The trustees consider the variability of returns and the fluctuations of valuation on the investment portfolio to constitute a financial risk and recent volatility in world stock markets has demonstrated that risk. The trustees consider the portfolio to be a long-term investment and the income is not a large portion of total income. The trustees consider that the charity could continue with no investment income from this portfolio therefore the risk is acceptable.

The trustees consider that the reserves of the charity are sufficient to cover approximately two year's operating costs. This does not include the stock market investments, which are excluded as they are prone to fluctuation as stated above.

**Operational** - The trustees recognise the responsibility the charity has to ensure the building, fixtures, fittings, and maintenance ancillary services provided are to a high standard compatible with those required by the Bassetlaw Health Partnership.

The trustees will ensure the ongoing development of clear operating procedures for the running of the charity in order to mitigate any significant risks.

**BASSETLAW HOSPICE OF THE GOOD SHEPHERD**  
REPORT OF THE TRUSTEES  
FOR THE YEAR ENDING 31<sup>ST</sup> MARCH 2024  
REGISTERED CHARITY NUMBER 701876

**External** - All fundraising activities are insured by external parties, who require full risk assessments specific to each activity or event.  
A formal review of all other risks is ongoing to ensure the charity can take action to minimise such risks.

### **Structure, Governance & Management**

#### **Governing document**

The charity is constituted under a trust deed dated 28th July 1989 which, with the approval of the Charity Commission, was superseded by a scheme dated 30th June 2004 and is an unincorporated company. The area to benefit under the deed is the district surrounding Retford and Worksop, known as Bassetlaw. The Fund created under the deed is for all donations, subscriptions and bequests which are to be used to provide premises, fixtures, fittings and equipment to maintain a hospice for the benefit and treatment of pain and suffering amongst the terminally ill residents of the area, catering for both their physical and spiritual welfare.

Copies of the deed are available from Bassetlaw Hospice, Cedar House, North Road, Retford, DN22 7XF.

#### **Recruitment and training of new trustees**

The trustees are elected to serve for two years on the Executive Committee, which meets every two months. Every year half the trustees are nominated for re-election.

#### **Induction and training of new trustees**

The charity follows the Charity Commission's recommendations with regard to trustees' induction. All new trustees are provided with a Help the Hospices Trustee Induction Pack along with a copy of the most recent full accounts and the Charity Commissions publication CC3 The Essential Trustee - What you need to know, what you need to do and given details where Charity Commission literature can be found. New trustees are encouraged to spend time at the hospice working with staff and volunteers to fully understand the nature of the care provided.

#### **Organisational structure**

The hospice is situated in Retford. The charity also maintains a shop and fundraising office (known as the Appeal Office) at 4 Jubilee Courtyard, Retford and a shop at Worksop.

The day-to-day running of the charity and fund-raising activities are managed by a salaried Charity Operations Manager. Six part time paid members of staff are employed in fundraising, administration, maintenance and gardening.

#### **Key management personnel remuneration**

The trustees consider the board of trustees and the Charity Operations Manager as comprising the key management personnel of the charity in charge of directing and controlling the charity and running and operating the charity on a day-to-day basis. All trustees give of their time freely and no trustee remuneration or trustee expenses were paid in the year.

Trustees are required to disclose all relevant interests and register them with the Charity Operations Manager and in accordance with policy withdraw from decisions where a conflict of interest arises.

The pay of the Charity Operations Manager is reviewed by the trustees on a regular basis. In view of the size and nature of the charity the trustees set the level of pay for the Charity Operations Manager with reference to similar positions within the health service and other local charities of a similar size.

**BASSETLAW HOSPICE OF THE GOOD SHEPHERD**  
REPORT OF THE TRUSTEES  
FOR THE YEAR ENDING 31<sup>ST</sup> MARCH 2024  
REGISTERED CHARITY NUMBER 701876

**Reference and administrative details:**

Registered Charity number: 701876

Principal address: Cedar House, North Road, Retford, DN22 7XF

Auditors: Hawsons  
5 Sidings Court, White Rose Way, Doncaster, DN4 5NU

Solicitors: Gareth Day  
Jones and Company, Cannon Square, Retford, DN22 6PB

Bankers: Lloyds Bank, High Street, Lincoln, LN5 7AP  
CAF Bank Limited, 25 Kings Hill Avenue, Kings Hill, West Malling, Kent,  
ME19 4JQ  
Virgin Money, Jubilee House, Gosforth, Newcastle upon Tyne,  
NE3 4PL

Investment managers: Rathbone Investment Management  
Port of Liverpool Building, Pier Head, Liverpool, L3 1NW

Trustees:	Position:
M W Quigley MBE	Chairman
D T Cashmore	Vice Chairman
R Ashmore	Treasurer
M Childs	Secretary
R Robinson	
B Spencer	
P Jefferson	
A Tromans	
D Bastow	
D Craggs	

Charity Operations Manager: B Baggaley

**BASSETLAW HOSPICE OF THE GOOD SHEPHERD**  
REPORT OF THE TRUSTEES  
FOR THE YEAR ENDING 31<sup>ST</sup> MARCH 2024  
REGISTERED CHARITY NUMBER 701876

**Statement of Trustees' Responsibilities**

The charity trustees are responsible for preparing a trustees' annual report and financial statements in accordance with applicable law and United Kingdom Accounting Standards (United Kingdom Generally Accepted Accounting Practice).

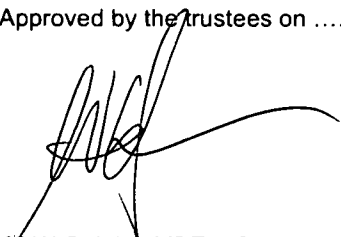
The law applicable to charities in England and Wales requires the charity trustees to prepare financial statements for each financial year which give a true and fair view of the state of the affairs of the charity and of the incoming resources and application of resources, of the charity for that period. In preparing the financial statements, the trustees are required to:

- select suitable accounting policies and then apply them consistently;
- observe the methods and principles in the Charities SORP 2019 (FRS102);
- make judgements and estimates that are reasonable and prudent;
- state whether applicable UK accounting standards have been followed, subject to any material departures disclosed and explained in the financial statements;
- prepare the financial statements on the going concern basis unless it is inappropriate to assume that the company will continue on that basis.

The trustees are responsible for keeping proper accounting records that disclose with reasonable accuracy, at any time, the financial position of the charity and to enable them to ensure that the financial statements comply with the Charities Act 2011, the Charity (Account and Reports) Regulations 2008 and the provisions of the Trust Deed. They are also responsible for safeguarding the assets of the charity and hence for taking reasonable steps for the prevention and detection of fraud and other irregularities.

The trustees are responsible for the maintenance and integrity of the charity and financial information included on the charity's website. Legislation in the United Kingdom governing the preparation and dissemination of financial statements may differ from the legislation in other jurisdictions.

Approved by the trustees on 16 AUGUST 2024 and signed on its behalf by:



M W Quigley MBE – Chair of Trustees

**BASSETLAW HOSPICE OF THE GOOD SHEPHERD**  
REPORT OF THE TRUSTEES  
FOR THE YEAR ENDING 31<sup>ST</sup> MARCH 2024  
REGISTERED CHARITY NUMBER 701876

## **Independent Auditor's Report to the Trustees of Bassetlaw Hospice of the Good Shepherd**

### **Opinion**

We have audited the financial statements of Bassetlaw Hospice of the Good Shepherd (the 'charity') for the year ended 31 March 2024, which comprise the Statement of Financial Activities (incorporating the Income and Expenditure Account), the Statement of Financial Position, the Statement of Cash Flows, and the Notes forming part of the Financial Statements, including significant accounting policies. The financial reporting framework that has been applied in their preparation is applicable law and United Kingdom Accounting Standards, including Financial Reporting Standard 102 'The Financial Reporting Standard applicable in the UK and Republic of Ireland' (United Kingdom Generally Accepted Accounting Practice).

In our opinion, the financial statements:

- give a true and fair view of the state of the charity's affairs as at 31 March 2024 and of incoming resources and application of resources, for the year than ended.
- have been properly prepared in accordance with United Kingdom Generally Accepted Accounting Practice; and
- have been prepared in accordance with the requirements of the Charities Act 2011.

### **Basis for opinion**

We conducted our audit in accordance with International Standards on Auditing (UK) (ISAs (UK)) and applicable law. Our responsibilities under those standards are further described in the Auditor's responsibilities for the audit of the financial statements section of our report. We are independent of the charity in accordance with the ethical requirements that are relevant to our audit of the financial statements in the UK, including the FRC's Ethical Standard, and we have fulfilled our other ethical responsibilities in accordance with these requirements. We believe that the audit evidence we have obtained is sufficient and appropriate to provide a basis for our opinion.

### **Conclusions relating to going concern**

In auditing the financial statements, we have concluded that the charity's use of the going concern basis of accounting in the preparation of the financial statements is appropriate.

Based on the work we have performed, we have not identified any material uncertainties relating to events or conditions that, individually or collectively, may cast significant doubt on the charity's ability to continue as a going concern for a period of at least twelve months from when the financial statements are authorised for issue.

Our responsibilities and the responsibilities of the charity trustees with respect to going concern are described in the relevant sections of this report.

### **Other information**

The other information comprises the information included in the annual report, other than the financial statements and our auditor's report thereon. The trustees are responsible for the other information contained within the annual report. Our opinion on the financial statements does not cover the other information and, except to the extent otherwise explicitly stated in our report, we do not express any form of assurance conclusion thereon.

Our responsibility is to read the other information and, in doing so, consider whether the other information is materially inconsistent with the financial statements or our knowledge obtained in the course of the audit, or otherwise appears to be materially misstated. If we identify such material inconsistencies or apparent material misstatements, we are required to determine whether this gives rise to a material misstatement in the financial statements themselves. If, based on the work we have performed, we conclude that there is a material misstatement of this other information, we are required to report that fact.

We have nothing to report in this regard.

## **Independent Auditor's Report to the Trustees of Bassetlaw Hospice of the Good Shepherd (continued)**

### **Matters on which we are required to report by exception**

We have nothing to report in respect of the following matters in relation to which the Charities (Accounts and Reports) Regulations 2008 requires us to report to you if, in our opinion:

- the information given in the trustees' report is inconsistent in any material respect with the financial statements; or
- sufficient accounting records have not been kept; or
- the financial statements are not in agreement with the accounting records; or
- we have not received all the information and explanations we require for our audit.

### **Responsibilities of trustees**

As explained more fully in the Statement of Trustees' Responsibilities set out on page 12, the trustees are responsible for the preparation of the financial statements and for being satisfied that they give a true and fair view, and for such internal control as the trustees determine is necessary to enable the preparation of financial statements that are free from material misstatement, whether due to fraud or error.

In preparing the financial statements, the trustees are responsible for assessing the charity's ability to continue as a going concern, disclosing, as applicable, matters related to going concern and using the going concern basis of accounting unless the trustees either intend to liquidate the charity or to cease operations, or have no realistic alternative but to do so.

### **Auditor's responsibilities for the audit of the financial statements**

We have been appointed as auditor under section 144 of the Charities Act 2011 and report in accordance with the Act and relevant regulations made of having effect thereunder.

Our objectives are to obtain reasonable assurance about whether the financial statements as a whole are free from material misstatement, whether due to fraud or error, and to issue an auditor's report that includes our opinion. Reasonable assurance is a high level of assurance but is not a guarantee that an audit conducted in accordance with ISAs (UK) will always detect a material misstatement when it exists. Misstatements can arise from fraud or error and are considered material if, individually or in the aggregate, they could reasonably be expected to influence the economic decisions of users taken on the basis of these financial statements.

Irregularities, including fraud, are instances of non-compliance with laws and regulations. We design procedures in line with our responsibilities, outlined above, to detect material misstatements in respect of irregularities, including fraud. The extent to which our procedures are capable of detecting irregularities, including fraud is detailed below:

The charity is subject to laws and regulations that directly and indirectly affect the financial statements. Based on our understanding of the company and the environment it operates within, we determined that the laws and regulations which were most significant included FRS 102, Charities Act 2011 and Health and Safety regulations. We considered the extent to which non-compliance with these laws and regulations might have a material effect on the financial statements, including how fraud might occur. We evaluated management's incentives and opportunities for fraudulent manipulation of the financial statements (including the risk of override of controls), and determined that the principal risks were related to the posting

## Independent Auditor's Report to the Trustees of Bassetlaw Hospice of the Good Shepherd (continued)

of inappropriate journal entries to improve the charity's result for the period, and management bias in key accounting estimates.

Audit procedures performed by the engagement team included:

- Discussions with management and those responsible for legal compliance procedures within the charity to obtain an understanding of the legal and regulatory framework applicable to the charity and how the charity complies with that framework, including consideration of known or suspected instances of non-compliance with laws and regulations and fraud;
- Reviewing minutes of trustee meetings;
- Identifying and assessing the design effectiveness of controls that management has in place to prevent and detect fraud and non-compliance with laws and regulations;
- Challenging assumptions and judgements made by management in their significant accounting estimates, in relation to the valuation of stock.
- Identifying and testing journal entries, in particular any journal entries posted with unusual account combinations or posted by senior management.

There are inherent limitations in the audit procedures described above and the more removed non-compliance with laws and regulations is from the events and transactions reflected in the financial statements, the less likely we are to become aware of it. Also, the risk of not detecting a material misstatement due to fraud is higher than the risk of not detecting one resulting from error, as fraud may involve deliberate concealment by, for example, forgery or intentional misrepresentations, or through collusion.

A further description of our responsibilities is available on the Financial Reporting Council's website at: <https://www.frc.org.uk/auditors/audit-assurance/auditor-s-responsibilities-for-the-audit-of-the-fi/description-of-the-auditor%E2%80%99s-responsibilities-for>. This description forms part of our auditor's report.

### Use of our report

This report is made solely to the charity's trustees, as a body, in accordance with Part 4 of the Charities (Accounts and Reports) Regulations 2008. Our audit work has been undertaken so that we might state to the charity's trustees those matters we are required to state in an auditor's report and for no other purpose. To the fullest extent permitted by law, we do not accept or assume responsibility to anyone other than the charity and the charity's trustees as a body, for our audit work, for this report, or for the opinions we have formed.



For and on behalf of Hawsons Chartered Accountants, Statutory Auditor

5 Sidings Court  
White Rose Way  
Doncaster  
South Yorkshire  
DN4 5NU

Date: 21 August 2024

Hawsons Chartered Accountants is eligible for appointment as auditor of the charity by virtue of its eligibility for appointment as auditor for a company under section 1212 of the Companies Act 2006.

**BASSETLAW HOSPICE OF THE GOOD SHEPHERD**  
**STATEMENT OF FINANCIAL ACTIVITIES (INCORPORATING THE INCOME AND EXPENDITURE ACCOUNT)**  
**FOR THE YEAR ENDING 31<sup>ST</sup> MARCH 2024**

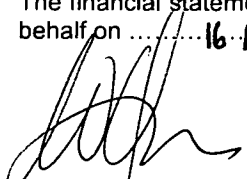
	Notes	Unrestricted Funds £	Restricted Funds £	Total Funds 2024 £	Total Funds 2023 £
<b>Incoming resources from charitable activities:</b>					
Donations and legacies	2	191,831	-	191,831	272,211
Charitable activities	3	3,595	-	3,595	2,861
Other trading activities	4	109,325	-	109,325	104,383
Investment income	5	126,070	-	126,070	219,102
		<hr/>	<hr/>	<hr/>	<hr/>
<b>Total income</b>		<b>430,821</b>	<b>-</b>	<b>430,821</b>	<b>598,557</b>
		<hr/>	<hr/>	<hr/>	<hr/>
<b>Expenditure</b>					
<b>Cost of raising funds</b>					
Charity shops	6(i)	91,073	-	91,073	86,187
Costs of generating voluntary income	6(ii)	87,075	-	87,075	80,881
Investment management	6(iii)	19,017	-	19,017	18,648
		<hr/>	<hr/>	<hr/>	<hr/>
		197,165	-	197,165	185,716
Charitable activities	7	316,733	-	316,733	359,346
		<hr/>	<hr/>	<hr/>	<hr/>
<b>Total expenditure</b>		<b>513,898</b>	<b>-</b>	<b>513,898</b>	<b>545,062</b>
		<hr/>	<hr/>	<hr/>	<hr/>
<b>Net (loss)/gain before gains/(losses) on investments</b>		<b>(83,077)</b>	<b>-</b>	<b>(83,077)</b>	<b>53,495</b>
		<hr/>	<hr/>	<hr/>	<hr/>
<b>Net gain/(loss) on investment assets</b>		<b>285,016</b>	<b>-</b>	<b>285,016</b>	<b>(354,953)</b>
		<hr/>	<hr/>	<hr/>	<hr/>
Net movement in funds		201,939	-	201,939	(301,458)
		<hr/>	<hr/>	<hr/>	<hr/>
Total funds brought forward		6,529,659	-	6,529,659	6,831,117
		<hr/>	<hr/>	<hr/>	<hr/>
<b>Total funds carried forward</b>		<b>6,731,598</b>	<b>-</b>	<b>6,731,598</b>	<b>6,529,659</b>
		<hr/>	<hr/>	<hr/>	<hr/>

The statement of financial activities includes all gains and losses recognised in the year. All incoming resources and reserves expended derive from continuing activities. The notes on pages 19 to 30 form part of these financial statements.

**BASSETLAW HOSPICE OF THE GOOD SHEPHERD**  
**STATEMENT OF FINANCIAL POSITION**  
**AS AT 31<sup>ST</sup> MARCH 2024**

		<b>2024</b>		<b>2023</b>	
	<b>Notes</b>	<b>£</b>	<b>£</b>	<b>£</b>	<b>£</b>
<b>Fixed Assets</b>					
Tangible assets	12	1,459,105		1,554,570	
Investments	13	5,086,423		4,697,334	
<b>Current Assets</b>					
Stocks	14	283		283	
Debtors	15	22,066		37,989	
Cash at bank and in hand	16	183,631		247,726	
		205,980		285,998	
<b>Creditors:</b> amounts falling due within one year	17	(19,910)		(8,243)	
		186,070		277,755	
<b>Net Current Assets</b>		186,070		277,755	
<b>Net Assets</b>		6,731,598		6,529,659	
<b>Funds</b>					
Unrestricted funds		6,731,598		6,529,659	
<b>Total charity funds</b>		6,731,598		6,529,659	

The financial statements were approved and authorised for issue by the Trustees and were signed on its behalf on ..... 16 August 2024

  
M W Quigley MBE  
Chair of Trustees

**BASSETLAW HOSPICE OF THE GOOD SHEPHERD**  
**STATEMENT OF CASHFLOWS**  
**FOR THE YEAR ENDING 31<sup>ST</sup> MARCH 2024**

	Notes	2024 £	2023 £
<b>Cash flow from operating activities</b>			
<b>Net cash provided by operating activities</b>	21	(86,092)	(59,568)
<b>Cash flows from investing activities:</b>			
Dividends, interest and income from investments		126,070	219,102
Purchase of property, plant and equipment		-	(28,941)
Proceeds from sale of investments		893,482	330,067
Purchase of investments		(1,108,310)	(544,120)
<b>Net cash (used in) investing activities</b>		<u>(88,758)</u>	<u>(23,892)</u>
<b>Change in cash and cash equivalents in the year</b>		(174,850)	(83,460)
<b>Cash and cash equivalents at the beginning of the year</b>		452,531	535,991
<b>Cash and cash equivalents at the end of the year</b>	22	<u>277,681</u>	<u>452,531</u>

**BASSETLAW HOSPICE OF THE GOOD SHEPHERD**  
NOTES FORMING PART OF THE FINANCIAL STATEMENTS  
FOR THE YEAR ENDING 31<sup>ST</sup> MARCH 2024

1.

**i. GENERAL INFORMATION**

The charity is an unincorporated organisation and a registered charity. The registered address is Cedar House, North Road, Retford, DN22 7XF.

**ii. STATEMENT OF COMPLIANCE**

The financial statements have been prepared in accordance with Accounting and Reporting by Charities: Statement of Recommended Practice applicable to charities preparing their accounts in accordance with the Financial Reporting Standard applicable in the UK and Republic of Ireland (FRS 102) (effective 1 January 2019) - (Charities SORP (FRS 102), the Financial Reporting Standard applicable in the UK and Republic of Ireland (FRS 102).

**iii. ACCOUNTING POLICIES**

The principal accounting policies adopted, judgements and key sources of estimation uncertainty in the financial statements are as follows:

**a. Basis of preparation**

Bassetlaw Hospice of the Good Shepherd meets the definition of a public benefit entity under FRS 102.

The assets and liabilities are initially recognised at historical cost or transaction value unless otherwise stated in the relevant accounting policy note.

The financial statements are prepared in sterling, which is the functional currency of the charity.

**b. Going concern**

The trustees consider that there are no material uncertainties about the charity's ability to continue as a going concern.

**c. Judgements and key sources of estimation uncertainty**

The preparation of the financial statements requires management to make judgements, estimates and assumptions that affect the amounts reported. These estimates and judgements are continually reviewed and are based on experience and other factors, including expectations of future events that are believed to be reasonable under the circumstances. The nature of estimation means that the outcomes could differ from those estimates.

The most significant area of estimation uncertainty for the charity is in relation to the useful economic life of the fixed assets.

**d. Fund accounting**

Unrestricted funds are available for use at the discretion of the trustees in furtherance of the general objectives of the charity.

Designated funds are unrestricted funds earmarked by the board of trustees for particular purposes.

~~Restricted funds are subject to restrictions on their expenditure imposed by the donor or through the terms of an appeal. Currently the charity does not have any restricted funds.~~

**BASSETLAW HOSPICE OF THE GOOD SHEPHERD**  
NOTES FORMING PART OF THE FINANCIAL STATEMENTS  
FOR THE YEAR ENDING 31<sup>ST</sup> MARCH 2024

**e. Incoming resources**

All incoming resources are included in the Statement of Financial Activities when the charity is entitled to the income and the amount can be quantified with reasonable accuracy. The following specific policies are applied to particular categories of income:

- Voluntary income is received by way of grants, donations and gifts and is included in full in the Statement of Financial Activities when receivable. Grants, where entitlement is not conditional on the delivery of a specific performance by the charity, are recognised when the charity becomes unconditionally entitled to the grant.
- Donated services and facilities are included at the value to the charity where this can be quantified. The value of services provided by volunteers has not been included in these accounts.
- Investment income is included when receivable.
- Incoming resources from grants, where related to performance and specific deliverables, are accounted for as the charity earns the right to consideration by its performance.
- Legacy income is recognised when it is probable that it will be received.

**f. Resources expended**

Expenditure is recognised on an accruals basis as a liability is incurred. Expenditure includes any VAT where it cannot be fully recovered, and is reported as part of the expenditure to which it relates:

- Costs of generating funds comprise the costs associated with attracting voluntary income.
- Charitable expenditure comprises those costs incurred by the charity in the delivery of its activities and services for its beneficiaries. It includes both costs that can be allocated directly to such activities and those costs of an indirect nature necessary to support them.
- Governance costs include those costs associated with meeting the constitutional and statutory requirements of the charity and include the professional fees and costs linked to the strategic management of the charity.
- All costs are allocated between the expenditure categories of the Statement of Financial Activities on a basis designed to reflect the use of the resource. Costs relating to a particular activity are allocated directly, others are apportioned on an appropriate basis e.g. floor areas, per capita or estimated usage.

**g. Tangible fixed assets**

Tangible fixed assets are stated at cost less depreciation.

Depreciation is provided at rates calculated to write off the cost or valuation of fixed assets, less their estimated residual value, over their expected useful lives on the following bases:

Building	4% straight line basis
Medical equipment	25% reducing balance basis
Hospice furniture fixtures & fittings	25% reducing balance basis
Office & shop equipment	25% reducing balance basis

**BASSETLAW HOSPICE OF THE GOOD SHEPHERD**  
NOTES FORMING PART OF THE FINANCIAL STATEMENTS  
FOR THE YEAR ENDING 31<sup>ST</sup> MARCH 2024

**h. Fixed asset investments**

Investments are initially recognised at their transaction value and subsequently measured at their market values at the Statement of Financial Position date using the closing quoted market price. The Statement of Financial Activities includes the net gains and losses arising on revaluation and disposals throughout the year.

**i. Realised gains and losses**

All gains and losses are taken to the Statement of Financial Activities as they arise. Realised gains and losses on investments are calculated as the difference between sales proceeds and their opening carrying value or their purchase value if acquired subsequent to the first day of the financial year.

Unrealised gains and losses are calculated as the difference between the fair value at the year end and their carrying value. Realised and unrealised investment gains and losses are combined in the Statement of Financial Activities.

**j. Pensions**

The charity operated a defined contribution pension scheme and the pension charge represents the amounts payable by the charity to the fund during the year.

**k. Hire purchase and leasing commitments**

Rentals payable under operating leases are charged to the Statement of Financial Activities on a straight-line basis over the period of the lease.

**l. Stocks**

Stocks are valued at the lower of cost and net realisable value, after making due allowance for obsolete and slow-moving items.

**m. Government grants**

Government grants are recognised at the fair value of the asset received or receivable. Grants are not recognised until there is reasonable assurance that the company will comply with the conditions attaching to them and the grants will be received. Government grants are recognised using the performance model.

Under the performance model, where the grant does not impose specified future performance-related conditions on the recipient, it is recognised in income when the grant proceeds are received or receivable. Where the grant does impose specified future performance-related conditions on the recipient, it is recognised in income only when the performance-related conditions have been met. Where grants received are prior to satisfying the revenue recognition criteria, they are recognised as a liability.

**BASSETLAW HOSPICE OF THE GOOD SHEPHERD**  
**NOTES FORMING PART OF THE FINANCIAL STATEMENTS**  
**FOR THE YEAR ENDING 31<sup>ST</sup> MARCH 2024**

**2. Donations & legacies**

	<b>2024</b>	<b>2023</b>
	<b>£</b>	<b>£</b>
Donations	138,294	113,689
Gift aid	1,606	2,948
Legacies	36,624	140,201
Subscriptions	13,750	13,097
Collections	1,557	2,276
	<b>191,831</b>	<b>272,211</b>

All of the legacies received included above are unrestricted.

**3. Charitable activities**

	<b>2024</b>	<b>2023</b>
	<b>£</b>	<b>£</b>
Hospice tea/coffee	3,595	2,861
	<b>3,595</b>	<b>2,861</b>

**4. Other trading activities**

	<b>2024</b>	<b>2023</b>
	<b>£</b>	<b>£</b>
Shop income	87,066	87,313
Fundraising events	18,739	14,360
eBay sales	1,653	1,786
Rose garden income	1,867	924
	<b>109,325</b>	<b>104,383</b>

**5. Investment Income**

	<b>2024</b>	<b>2023</b>
	<b>£</b>	<b>£</b>
Solar Panel income	2,980	2,670
Dividends - equities	90,501	113,318
Interest on cash deposits	27,247	13,874
Other income	5,342	89,240
	<b>126,070</b>	<b>219,102</b>

**BASSETLAW HOSPICE OF THE GOOD SHEPHERD**  
NOTES FORMING PART OF THE FINANCIAL STATEMENTS  
FOR THE YEAR ENDING 31<sup>ST</sup> MARCH 2024

**6. Cost of raising funds**

	<b>2024</b>	2023
	£	£
<b>i. Charity Shops</b>		
Opening stock	283	283
Purchases	579	986
Closing stock	(283)	(283)
Staff cost	32,773	30,813
Other operating leases	31,323	30,178
Rates and water	1,307	1,928
Insurance	3,656	3,153
Light and heat	5,377	3,220
Professional fees	2,950	2,759
Shop repairs	8,349	7,237
Advertising & marketing	2,548	2,737
Stationery	28	1,364
Sundry costs	564	306
Telephone & broadband	1,619	1,506
	<hr/>	<hr/>
	91,073	86,187
	<hr/>	<hr/>
<b>ii. Costs of generating voluntary income</b>		
Staff costs	56,919	53,743
Other operating leases	6,088	5,750
Rates and water	871	1,285
Insurance	3,656	3,152
Light and heat	2,305	1,380
Event costs	5,592	4,025
Advertising	2,548	2,737
Professional fees	2,950	2,754
Charity expenses	774	594
Sundry expenses	743	213
Stationery & office expenses	2,587	2,002
Telephone & broadband	1,619	2,322
Repairs & maintenance	319	315
Bank charges	104	609
	<hr/>	<hr/>
	87,075	80,881
	<hr/>	<hr/>
<b>iii. Investment management</b>		
Portfolio management	19,017	18,648
	<hr/>	<hr/>
	19,017	18,648
	<hr/>	<hr/>

**BASSETLAW HOSPICE OF THE GOOD SHEPHERD**  
NOTES FORMING PART OF THE FINANCIAL STATEMENTS  
FOR THE YEAR ENDING 31<sup>ST</sup> MARCH 2024

**7. Charitable activities costs**

Staff costs	36,554	34,367
External services	20,779	19,639
Rates & water	6,867	7,084
Facilities contracts	10,158	9,225
Insurance	3,656	3,152
Light & heat	21,160	18,628
Postage, stationery & telephone	2,955	2,255
Sundries	4,446	4,334
Repairs & renewals	5,585	2,037
Garden maintenance	702	979
Equipment & supplies	4,079	2,486
Repairs to equipment	12,702	8,549
Travel	6,052	3,223
Non-medical NHS costs	80,015	138,788
Depreciation	95,465	99,361
Support costs	3,010	2,501
Advertising & marketing	2,548	2,738
	316,733	359,346
	316,733	359,346

**8. Staff costs**

	<b>2024</b>	<b>2023</b>
	<b>£</b>	<b>£</b>
External services	20,779	19,639
Salaries and wages	118,817	111,678
Social security costs	3,191	2,785
Staff pensions	4,041	4,460
	146,828	138,563
	146,828	138,563

The average number of employees analysed by function was:

	<b>2024</b>	<b>2023</b>
Direct charitable	4	4
Cost of raising funds	3	3
	7	7
	7	7

No employee earned remuneration of more than £60,000 (2023: £60,000).

**BASSETLAW HOSPICE OF THE GOOD SHEPHERD**  
NOTES FORMING PART OF THE FINANCIAL STATEMENTS  
FOR THE YEAR ENDING 31<sup>ST</sup> MARCH 2024

**9. Trustee Remuneration & Related Party Transactions**

No trustee or related party received any remuneration in either the current year or previous period.

No trustee or other related person to the charity had any personal interest in any contract or transaction entered into by the charity during the year.

During the year the remuneration paid to the charity operation's manager was £44,616. (2023: £49,956).

**10. Net income**

Net income for the year is stated after charging;

	<b>2024</b>	2023
	£	£
Depreciation	95,465	99,361
Auditors' remuneration – audit services	4,900	4,860
- for accountancy services	2,300	1,295
Payroll management services	1,650	1,617
Operating lease rentals	37,411	35,928

**11. Taxation**

As a charity, Bassetlaw Hospice of the Good Shepherd is exempt from tax on income and gains falling within Section 505 of the Taxes Act 1998 or Section 256 of the Chargeable Gains Act 1992 to the extent that these are applied to its charitable objects.

**BASSETLAW HOSPICE OF THE GOOD SHEPHERD**  
NOTES FORMING PART OF THE FINANCIAL STATEMENTS  
FOR THE YEAR ENDING 31<sup>ST</sup> MARCH 2024

**12. Fixed assets**

	<b>Building</b>	<b>Medical equipment</b>	<b>Hospice fixtures &amp; fittings</b>	<b>Office &amp; shop equipment</b>	<b>Total</b>
	<b>£</b>	<b>£</b>	<b>£</b>	<b>£</b>	<b>£</b>
<b>COST</b>					
As at 1 April 2023	2,333,909	115,947	152,822	24,333	2,627,011
Additions	-	-	-	-	-
<b>At 31 March 2024</b>	<b>2,333,909</b>	<b>115,947</b>	<b>152,822</b>	<b>24,333</b>	<b>2,627,011</b>
<b>DEPRECIATION</b>					
As at 1 April 2023	850,781	96,060	106,596	19,004	1,072,441
Charge for the year	77,605	4,972	11,556	1,332	95,465
<b>At 31 March 2024</b>	<b>928,386</b>	<b>101,032</b>	<b>118,152</b>	<b>20,336</b>	<b>1,167,906</b>
<b>NET BOOK VALUE</b>					
<b>At 31 March 2024</b>	<b>1,405,523</b>	<b>14,915</b>	<b>34,670</b>	<b>3,997</b>	<b>1,459,105</b>
At 31 March 2023	1,483,128	19,887	46,226	5,329	1,554,570

**BASSETLAW HOSPICE OF THE GOOD SHEPHERD**  
**NOTES FORMING PART OF THE FINANCIAL STATEMENTS**  
**FOR THE YEAR ENDING 31<sup>ST</sup> MARCH 2024**

**13. Fixed asset Investments**

Movement in fixed asset investments

	<b>2024</b>	<b>2023</b>
	<b>£</b>	<b>£</b>
Market value brought forward 1 April 2023	4,492,529	4,633,429
Additions to investments at cost	1,108,310	544,120
Disposal of investments	(893,482)	(330,067)
Gain on disposal of investments	74,724	45,490
Net gain/(loss) on revaluation of investments	210,292	(400,443)
	4,992,373	4,492,529
Market value carried forward at 31 March 2024	4,992,373	4,492,529
Cash deposits held within the investment portfolio	94,050	204,805
	5,086,423	4,697,334

Investments at market value  
 Comprised:

Equities	4,992,373	4,492,529
Cash deposits held within the investment portfolio	94,050	204,805
	5,086,423	4,697,334

All investments are carried at their market value. Investments in equities and fixed interest securities are all traded in quoted public markets. Investment sales and purchases are recognised at the date of the trade at cost (that is their transaction value).

**14. Stock**

	<b>2024</b>	<b>2023</b>
	<b>£</b>	<b>£</b>
Stocks of merchandise for resale	283	283
	283	283

**15. Debtors**

	<b>2024</b>	<b>2023</b>
	<b>£</b>	<b>£</b>
Legacies receivable	2,200	7,098
Prepayments	8,425	8,543
VAT	11,436	22,343
Other debtors	5	5
	22,066	37,989

**BASSETLAW HOSPICE OF THE GOOD SHEPHERD**  
**NOTES FORMING PART OF THE FINANCIAL STATEMENTS**  
**FOR THE YEAR ENDING 31<sup>ST</sup> MARCH 2024**

**16. Cash at bank and in hand**

	<b>2024</b>	<b>2023</b>
	<b>£</b>	<b>£</b>
Charity petty cash		
Maintenance petty cash	109	263
Events petty cash	4,206	1,157
Shop cash register	27	27
Bank account trustees	1,342	1,095
Bank account maintenance	4,956	7,168
Bank account charity	4,319	7,131
Main investment account	152,290	214,383
Virgin money account	10,460	10,460
PayPal	5,922	5,922
CAF Bank	-	120
	183,631	247,726

**17. Creditors:** amounts falling due within one year

	<b>2024</b>	<b>2023</b>
	<b>£</b>	<b>£</b>
Trade creditor	11,538	-
Taxation & social security	2,045	1,656
Accruals	5,662	5,827
Pension liability	665	760
	19,910	8,243

**18. Operating Lease Commitments**

	<b>2024</b>	<b>2023</b>
	<b>£</b>	<b>£</b>
Total lease commitments	91,731	115,661
	91,731	115,661

The following operating lease payments are committed to be paid:

The lease commitments disclosed above, relate to Retford shop premises leased by charity in order to generate funds.

**BASSETLAW HOSPICE OF THE GOOD SHEPHERD**  
NOTES FORMING PART OF THE FINANCIAL STATEMENTS  
FOR THE YEAR ENDING 31<sup>ST</sup> MARCH 2024

**19. Movement in Funds**

	At 1 April 2023	Income	Expenditure	Gains	At 31 March 2024
Unrestricted Funds:	£	£	£	£	£
General Fund	6,529,659	430,821	(513,898)	285,016	6,731,598
Total funds	<u>6,529,659</u>	<u>430,821</u>	<u>(513,898)</u>	<u>285,016</u>	<u>6,731,598</u>

**20. APB Ethical Standard- provisions available for small entities**

In common with many other organisations of our size and nature we use our auditors to prepare and submit returns to the tax authorities and assist with the preparation of our financial statements. Charges for these services are: Payroll processing £1,650, Accountancy services £2,300, Auditing £4,900, Total £8,850.

**21. Reconciliation of net income/(expenditure) to net cash flow from operating activities**

	2024 £	2023 £
Net surplus/(deficit) for the year	201,939	(301,458)
<b>Adjustments for:</b>		
Depreciation charges	95,465	99,361
(Gains)/ loss on investments	(285,016)	354,953
Dividends, interest and income from investments	(126,070)	(219,102)
(Increase) in stocks	-	-
Decrease in debtors	15,923	5,885
Increase in creditors	11,667	793
	<u>(86,092)</u>	<u>(59,568)</u>

**22. Analysis of cash and cash equivalents**

	2024 £	2023 £
Cash at bank and in hand	183,631	247,726
Cash held in investment portfolio	94,050	204,805
	<u>277,681</u>	<u>452,531</u>

**BASSETLAW HOSPICE OF THE GOOD SHEPHERD**  
NOTES FORMING PART OF THE FINANCIAL STATEMENTS  
FOR THE YEAR ENDING 31<sup>ST</sup> MARCH 2024

**23. Related party transactions**

The charity did not have any Related Party Transactions during the year ended 31 March 2024 (2023 – none).

**24. Post balance sheet events**

Subsequent to the year end the market value of the investments held in note 13 have risen from £5,086,423 as at 31 March 2024 to £5,094,797 as at 30 June 2024. This is a non-adjusting event and no further adjustment or disclosure is required.

**25. Going concern**

After due consideration of all relevant factors, the trustees have a reasonable expectation that the charity has adequate resources to continue in operational existence for the foreseeable future. Accordingly, they continue to adopt the going concern basis in preparing the financial statements.

**BASSETLAW HOSPICE OF THE GOOD SHEPHERD**  
NOTES FORMING PART OF THE FINANCIAL STATEMENTS  
FOR THE YEAR ENDING 31<sup>ST</sup> MARCH 2024

**Analysis of Statement of Financial Activities for the Year ended 31 March 2024**

**Income**

	<b>2024</b>	<b>2023</b>
	£	£
<b>Donations &amp; legacies</b>		
Donations	138,294	113,689
Gift aid	1,606	2,948
Legacies	36,624	140,201
Subscriptions	13,750	13,097
Collections	1,557	2,276
	<b>191,831</b>	<b>272,211</b>
<b>Charitable activities</b>		
Hospice tea/coffee	3,595	2,861
	<b>3,595</b>	<b>2,861</b>
<b>Other trading activities</b>		
Shop income	87,066	87,313
Fundraising events	18,739	14,360
eBay sales	1,653	1,786
Rose garden income	1,867	924
	<b>109,325</b>	<b>104,383</b>
<b>Investment income</b>		
Solar panel income	2,980	2,670
Dividends – equities	90,501	113,318
Interest on cash deposits	27,247	13,874
Other income	5,342	89,240
	<b>126,070</b>	<b>219,102</b>
<b>Total Income for the year</b>	<b>430,821</b>	<b>598,557</b>

**BASSETLAW HOSPICE OF THE GOOD SHEPHERD**  
NOTES FORMING PART OF THE FINANCIAL STATEMENTS  
FOR THE YEAR ENDING 31<sup>ST</sup> MARCH 2024

**Analysis of Statement of Financial Activities for the Year ended 31 March 2024**

**Expenditure**

	<b>2024</b>	<b>2023</b>
	<b>£</b>	<b>£</b>
<b>Cost of fundraising</b>		
<b>Charity shops</b>		
Opening stock	283	283
Purchases	579	986
Closing stock	(283)	(283)
Staff costs	32,773	30,813
Other operating leases	31,323	30,178
Rates & water	1,307	1,928
Insurance	3,656	3,153
Light & heat	5,377	3,220
Shop repairs	8,349	7,237
Professional fees	2,950	2,759
Advertising & marketing	2,548	2,737
Stationery	28	1,364
Sundry costs	564	306
Telephone & broadband	1,619	1,506
	<b>91,073</b>	<b>86,187</b>
<b>Cost of generating voluntary income</b>		
Staff costs	56,919	53,743
Other operating costs	6,088	5,750
Rates & water	871	1,285
Insurance	3,656	3,152
Light & heat	2,305	1,380
Event costs	5,592	4,025
Advertising	2,548	2,737
Professional fees	2,950	2,754
Charity expenses	774	594
Sundry expenses	743	213
Stationery & office expenses	2,587	2,002
Telephone & broadband	1,619	2,322
Repairs & maintenance	319	315
Bank charges	104	609
	<b>87,075</b>	<b>80,881</b>
<b>Investment management</b>		
Portfolio management	<b>19,017</b>	<b>18,648</b>
	<b>197,165</b>	<b>185,716</b>
<b>Total costs of fundraising</b>	<b>197,165</b>	<b>185,716</b>

**BASSETLAW HOSPICE OF THE GOOD SHEPHERD**  
**NOTES FORMING PART OF THE FINANCIAL STATEMENTS**  
**FOR THE YEAR ENDING 31<sup>ST</sup> MARCH 2024**

**Analysis of Statement of Financial Activities for the Year ended 31 March 2024**

	<b>2024</b>	<b>2023</b>
	<b>£</b>	<b>£</b>
<b>Charitable activities</b>		
Staff costs	36,554	34,367
External services	20,779	19,639
Rates & water	6,867	7,084
Facilities contracts	10,158	9,225
Insurance	3,656	3,152
Light & heat	21,160	18,628
Postage, stationery & telephone	2,955	2,255
Sundries	4,446	4,334
Repairs & renewals	5,585	2,037
Garden maintenance	702	979
Equipment & supplies	4,079	2,486
Repairs to equipment	12,702	8,549
Travel	6,052	3,223
Non-medical NHS costs	80,015	138,788
Depreciation	95,465	99,361
Support costs	3,010	2,501
Advertising & marketing	2,548	2,738
	<b>316,733</b>	<b>359,346</b>
<b>Total expenditure for the year</b>	<b>513,898</b>	<b>545,062</b>
<b>Net (loss)/income before other gains</b>	<b>(83,077)</b>	<b>53,495</b>
Net gain/(loss) on revaluation of investments	210,292	(400,443)
Gain on disposal of investments	74,724	45,490
<b>Net income/(expenditure) for the year</b>	<b>201,939</b>	<b>(301,458)</b>