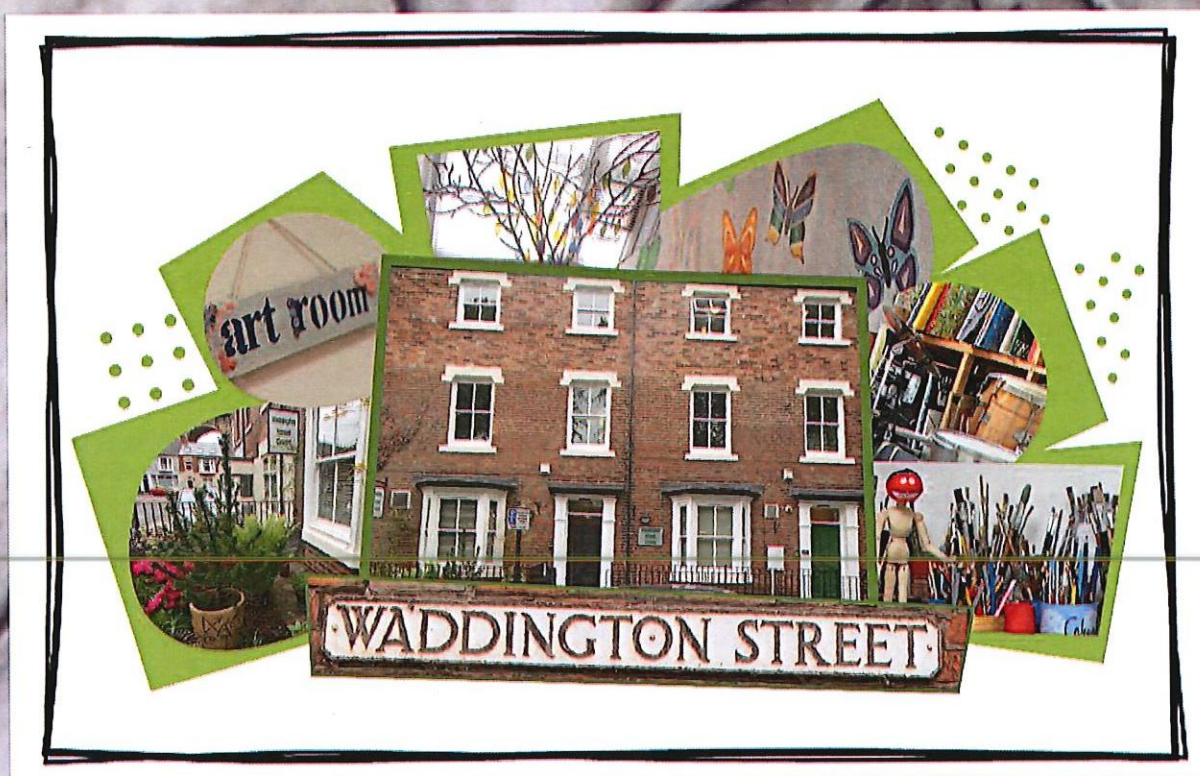


# WADDINGTON STREET CENTRE



## Annual Report 2021/2022

Charity Registration – 701514  
Company Registration - 2330506

### **A bit about us.....**

Waddington Street Centre is a small, independent mental health resource centre with forty years of experience, offering a wide range of services to the local community.

Our activities and services aim to support individual personal development and reduce social isolation and exclusion. Everything we offer is designed to suit a range of interests and needs. We are passionate about mental health and helping people to get back on track.

We believe that people who struggle with their mental health should have a safe, supportive and interesting place to recover. Waddington Street is a community of like-minded people who support one another to have the best possible lives.



**Waddy Member CJ with their art work commissioned for our 40th Anniversary.**

## Reflections on the Last Year.

Although our year began in another national lockdown we were not deterred. We reverted to home working until April 2021; whilst not our preferred means of operation we knew it could be done and would keep our members going until we could reopen once more.

In April we reopened to our members. Thanks must go to our friends and neighbours at the United Reformed Church for sharing their beautiful building with us. Access to the Church meant that we were able to keep people safe. Social groups were able to meet daily in this space whilst our Resource Centre building was used specifically for our New College Durham courses. A huge thank you must also go to Volunteers, Waddy Helpers, Tutors and Staff. In the age-old tradition of WSC we pulled together as a team to provide the best possible support we could to our members.

Alongside keeping our members safe and well during Covid we also worked on two other exciting projects.

Firstly, 2021 marked our 40<sup>th</sup> Anniversary as a community-based mental health charity. Our charitable aims and mission had never felt more important than over the Pandemic. As we love any opportunity to celebrate and share our work, we couldn't wait to get started with our Anniversary preparations. We wanted to raise funds for something that would really benefit our members. We have a long history of getting people out and about. Trips, holidays and transporting members to community sports venues have all been essential aspects of our support services. Our old bus was coming to the end of its life span so we decided to raise money to buy a new one. Alongside the hard work and generosity of people within the WSC community and the wider local community we also had help from our Corporate sponsors, Millburngate Project and Lumiere.

The prospect of raising £40,000 did seem daunting at first. The reality was that we had a lot of fun on the way. Many scones were baked and eaten! Our pre-loved sale was a huge success and we all enjoyed playing shop for the day. We even managed to get Mary Foy, M.P - to pick up a few bargains. Staff, volunteers and members did a Triathlon event at Seaham. We had to burn off the calories from the scones somehow. In short, by working together and having hope, we achieved our target amount and were able to purchase our new Bus in January 2022.



Perhaps the best part of our anniversary celebrations though was our actual anniversary gathering in November. This is the first time we'd been able to come together en masse for nearly two years. It felt important and wonderful to do so. There were excellent member presentations and performances throughout the day. It truly is days like these that remind us why we do the work we do. There is nothing more rewarding than seeing people enjoying themselves whilst doing something they love.

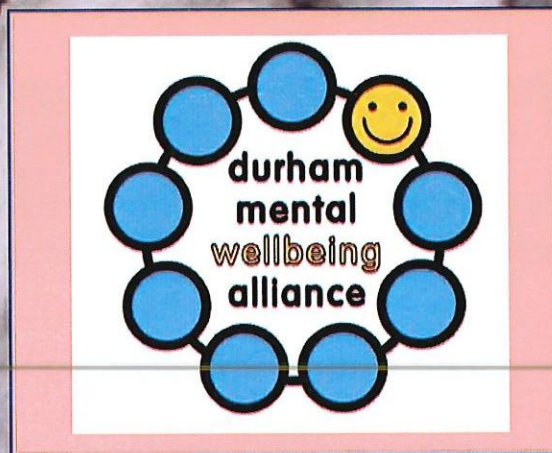


Our other major focus in the past year has been the Durham Mental Wellbeing Alliance (DMWA). In January 2021 Durham County Council re-tendered 21 of their mental health and wellbeing services and decided to commission a new collaborative approach to providing a range of support services including prevention, early identification and recovery support for people experiencing mental health issues in County Durham. This approach aims to get partners to pool together their skills, knowledge and resources for the greater benefit of service users. So, in January we began working with colleagues from other voluntary sector mental health service providers and began to put together a tender submission. In September we received the news that we'd been successful and for the following 6 months we worked together to mobilise our Alliance. Whilst each organisation will retain their individual identities, ethos and values it is hoped that by working together we will be able to provide more streamlined services, offer easier referral systems to our service users and help those struggling to get the right support they need when they need it.

From an organisational perspective the Alliance partnership also brings longer term financial security given the 7 – 10-year contract. This will enable us to forward plan and hopefully give security to our users. We'll all benefit from this consistency, given the turbulence of the past two years.

We have also made the decision to move away from providing supported accommodation services. As the DMWA seeks to reduce duplication of services we felt that our partnership with housing providers, Homegroup and Richmond Fellowship, gave us the opportunity to restructure our activities. As we move away from supported accommodation we intend to develop a new service that focuses on supporting the physical health of those with mental health needs.

Waddington Street Centre will also proudly take the lead on Co-Production and User Involvement. Having user voice to inform and be an integral part of the DMWA has been important throughout the whole process. They even designed our new logo and chose our name.



Members of the Alliance are: Waddington Street Centre, Home Group, St Margaret's Centre, If U Care Share, Richmond Fellowship, Creative Support, Mental Health Matters.

We will also be sub-contracting to the following organisations; Hub of Wishes, Cruse Bereavement Support, Aspire, Welfare Rights, Pact House and Relate.

The Alliance will ultimately offer people greater choice in the services they receive to support them along their recovery journey.

## **Our Formal Charity Objectives, Values and Activities**

***Our objectives, as set out in the company's Memorandum of Association, are;***

- i. Establishing and promoting any charitable purpose in order to support people with mental health needs***
- ii. This will be undertaken primarily through the provision and management of a resource centre and support for independent living***
- iii. The charity's beneficiaries are principally people living in County Durham***

## **Our values embrace:**

- A person-centred approach. Everyone is important to us: those who work for us and use our services; people in the local community; supporters and carers.
- Respecting individuality and diversity. We value difference and want everyone to be treated with personal dignity and respect, free from discrimination or harassment. We believe everyone has a positive contribution to make.
- Quality driven, open, honest, transparent and accountable. We aim for high standards in all we do. We aim to be efficient and effective.
- Positive about partnerships. We invest in genuine partnership working, striving to create new alliances and new opportunities to help us achieve our aims.

### **To ensure public benefit:**

All our charitable activities focus on providing effective support and meaningful opportunities to adults living in the community who have mental health needs and are undertaken to further our charitable purposes for the public benefit.

**To ensure alignment with statutory requirements and recommendations:  
The Centre seeks at all times to engage with mental health guidance and strategies, both national and local. At this time there are seven strategies/reports that have particular significance and give direction to the Centre's strategic aims:**

- No Health without Mental Health - HM Government - February 2011
- Five Year Forward View for Mental Health: One Year On - NHS - February 2017
- County Durham Public Mental Health Report - All the lonely people: social isolation and loneliness in County Durham - December 2014
- County Durham Joint Health and Wellbeing Strategy 2016/2019
- County Durham Joint Strategic Needs Assessment Key Messages 2016
- Self-Harm and Suicide Audit 2012/14 County Durham - Durham County Council - July 2017
- County Durham Mental Health and Wellbeing Strategic Plan 2018/2021

### **Status**

The organisation is a charitable company limited by guarantee, incorporated on 21<sup>st</sup> December 1988 and registered as a Charity on 16 May 1989.

The company was established under a Memorandum of Association which established the objects and powers of the charitable company and is governed under its Articles of Association.

**Company Registration Number**  
**Charity Registration Number**

**2330506**  
**701514**

## The Board of Directors

The directors of the charity are its trustees for the purpose of charity law and are collectively referred to as the Board. As set out in the Articles of Association the directors retire by rotation every three years and are eligible for re-election at the Annual General Meeting.

### Company Directors / Trustees as at the 2021 AGM:

Louise Toms	Elected 26/11/21	Retires 2024
Fred Robinson (Chair)	Elected 26/11/21	Retires 2024
Jeff Dean (Treasurer)	Elected 29/11/19	Retires 2022
Bob Kelly	Elected 29/11/19	Retires 2022
David Rushton (Deputy Chair)	Elected 27/11/20	Retires 2022
David Shipman	Elected 27/11/20	Retires 2022
David Blazey (Secretary)	Elected 27/11/20	Retires 2023
Kay Parker	Elected 27/11/20	Retires 2023
Daniel Rippon	Elected 27/11/20	Retires 2023
Jennifer Lamb	Elected 26/11/21	Retires 2024

### Registered Office and Operation Address

3 Waddington Street, Durham City, DH1 4BG.

### Auditors

Ribchesters, Chartered Accountants, Finchale House, Belmont Business Park, Durham.  
DH1 1TW

### Bankers

Lloyds Bank, 19 Market Place, Durham. DH1 3AN

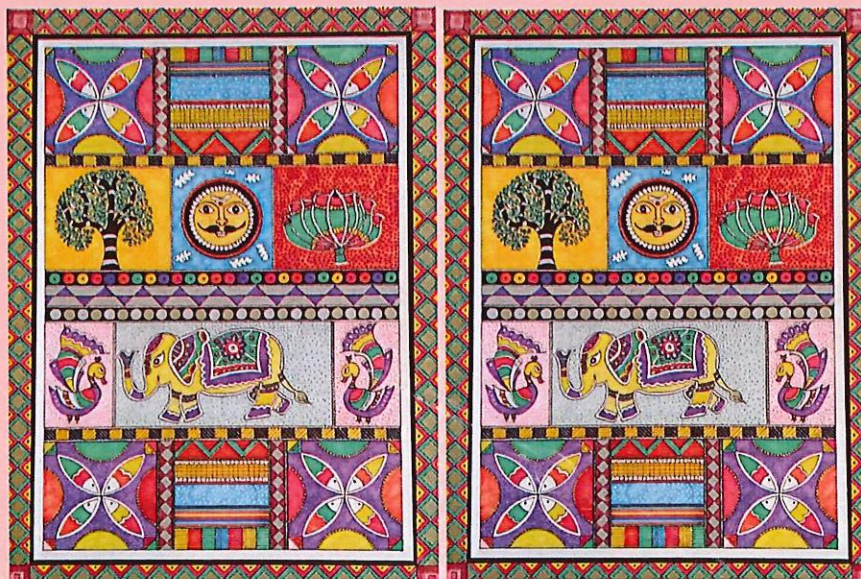


## Structure, Governance and Management of the Charity

The organisation's governing documents are the Memorandum of Association and the Articles of Association dated 28<sup>th</sup> November 2011.

Waddington Street Centre (WSC) is governed by a Board of Directors/Trustees which is responsible for managing the business of the Company. The Board meets approximately every six weeks and receives regular reports from the Centre's Management team, the Treasurer and WSC Members. The Board also has three sub-committees which meet when required and report to the Board. These are: the Finance Sub Committee, the Personnel (Employment) sub-committee and the Health & Safety sub-committee. Other working groups are set up by the Board as required.

WSC seeks to have a Board which combines complementary skills and experiences and which has strong member representation. Consequently, individuals may be asked to consider serving as Directors/Trustees because they offer particular skills or experience, come from partner organisations, or are able to offer the perspective of service users (or 'members', as we call them). WSC encourages and supports members to become formally involved in helping to run the Centre. We do this through focus groups and formal helping roles including: reviewing procedures, buddies and peer support groups. People with lived experience have much to share and contribute. In September 2019, we launched our Waddy Helper initiative – a formalised helping role for WSC members. Our Valued Views Group, made up of our members, meet before each Board meeting. Their thoughts and views are then fed into the Board. Keeping member needs and views at the forefront of decisions is important to our Trustees.



## **Risk Review, Financial Review and Reserve Policy**

### **Risk Review**

The Board of Directors has conducted an annual review of the major risks to which the charity is exposed and systems have been established to mitigate those risks. The current risk management strategy and risk register were agreed by the Board at their meeting on 8<sup>th</sup> August 2022. The Trustees recognise that any major risks to which the charity is exposed need to be reviewed and systems put in place to mitigate those risks. To that end Waddington Street Centre Limited is continually monitoring and managing its risk, reviewing the corporate risk register and ensuring action plans are in place to manage its key risks.

### **Financial Review**

The financial results for the charity are detailed in the annexed Statement of Financial Activities and Balance Sheet, together with the related notes.

In summary, we made a surplus of £38,328 during 2021-2022 (compared to a surplus of £18,990 during 2020-2021). This year's surplus was due in the main to two post-dated grant awards received late in the financial year. The NHS Community Connector grant for £24,138 and the Durham Area Action Partnership (DAAP) Mental Health and Digital Inclusion grant for £10,000 will be utilised in the 2022-2023 tax year.

This leaves a truer reflection of a £4,190 surplus for 2021-22, a good achievement in the main down to a successful 40<sup>th</sup> Anniversary fundraising campaign in which the centre and its supporters raised £48,108 to go towards our new minibus and, to help fund services provided by Waddington Street Centre to its members.

It is expected that future years funding will be under increased pressure. From April 2022 the centre's primary funding stream is through the new Durham Mental Wellbeing Alliance of which the centre is one of the seven main service providers. The Alliance funding is guaranteed for 7 years (with a possible 3 years funding thereafter). However, this funding which is in line with previous years Durham County Council service level agreements comes with no inflationary uplift throughout the 7 years and an Alliance management cost top slice. This Alliance funding will need to be supplemented to enable Waddington Street to continue to provide the same level of service provision to its members. In line with the new business development plan 2023-2026 this matter will be addressed by trustees and management over the next 6/9 months.

## **Reserves Policy**

Waddington Street Centre provides support to people with significant mental health issues.

Hence, many of our members are vulnerable, and are very reliant upon our services. Therefore, we are very mindful to ensure we can support them for a period of time so that there is opportunity to try to ensure that the future support required by each individual member is in place before they are discharged from our support services. In short, a transition period would be required.

During the next financial year, we are entering a cautious transitional period having joined the Alliance in April 2022. We will be constantly reviewing and reporting internally and externally on our finances during this period. With this in mind we need to hold more reserves than previously held to ensure we have sufficient to cover the services our members need and have become to rely on. Also due to the significant downturn in the economy we need to also consider that we are at risk of seeing a substantial reduction in our donation income from our ongoing fundraising activities. We continue to work positively to deal with those potential funding impacts.

For this reason, the board has established a policy whereby free reserves (unrestricted current assets less unrestricted current liabilities) should ideally be at least equal to unrestricted expenditure during the last 12 months.

From the 2021-2022 accounts free reserves currently stand at £356,866. Also, from the 2021-2022 accounts unrestricted expenditure during the last 12 months was £276,925.

The board has decided and approved that included in our reserves policy for the next year and maintained for subsequent years we need to keep aside £10,000 for building maintenance, the building being the charity's most valuable fixed asset but also due to its time since full renovation in 1997 also an increasing liability and, £6,000 a year starting this year for the next 10 years in order to update the centre's mini bus, a valuable resource to the centre, its members and activities.

As such, the board is meeting the requirements of its Reserves Policy.

## **Investment Policy**

Although no investments are currently held, the charity has the power to make any investment which the Board sees fit.

WSC Finance Sub Committee  
August 2022

## Relationships

WSC has extensive relationships with other organisations both in the statutory and voluntary sectors. Relationships and networks include:

- Durham County Council Adult and Health Services. The largest share of WSC's revenue funding comes through long-standing SLA (Service Level Agreement) arrangements with the County Council.
- New College Durham. This Grade 1 OFSTED - rated Further Education College strongly supports the work of the Centre and provides a wide range of educational courses and activities for members.
- Durham County Council Adults and Health Service – Housing. WSC is a provider of housing support services and 'floating support' under the former Supporting People regime. The Centre is also a partner organisation in the Lanchester Road Hospital Discharge Service.
- Housing provision - WSC has relationships with the Master and Brethren of the Hospital of God at Greatham (a Charity), St Margaret's Church - Durham and Davison Holdings Limited. All enabling the provision of supported tenancies.
- NHS Trusts. Regular contacts with health professionals, notably with the Lanchester Road Hospital (Tees, Esk and Wear Valleys NHS Trust).
- Durham County Council Public Health. We receive funding to operate Men's and Women's Crees. A mostly peer support driven model which seeks to reduce social isolation and suicide rates.
- Durham University Community Outreach and Engagement. Work with the University's outreach programme enhances venue and training possibilities for Centre services particularly around physical health activities including the use of football and gym facilities.
- Partners in the Durham Mental Wellbeing Alliance.
- Partners with the Durham and Darlington County Wide Forum – A Service User led group.

In addition to the above, Waddington Street Centre, through its networks and partnerships, sits on the:

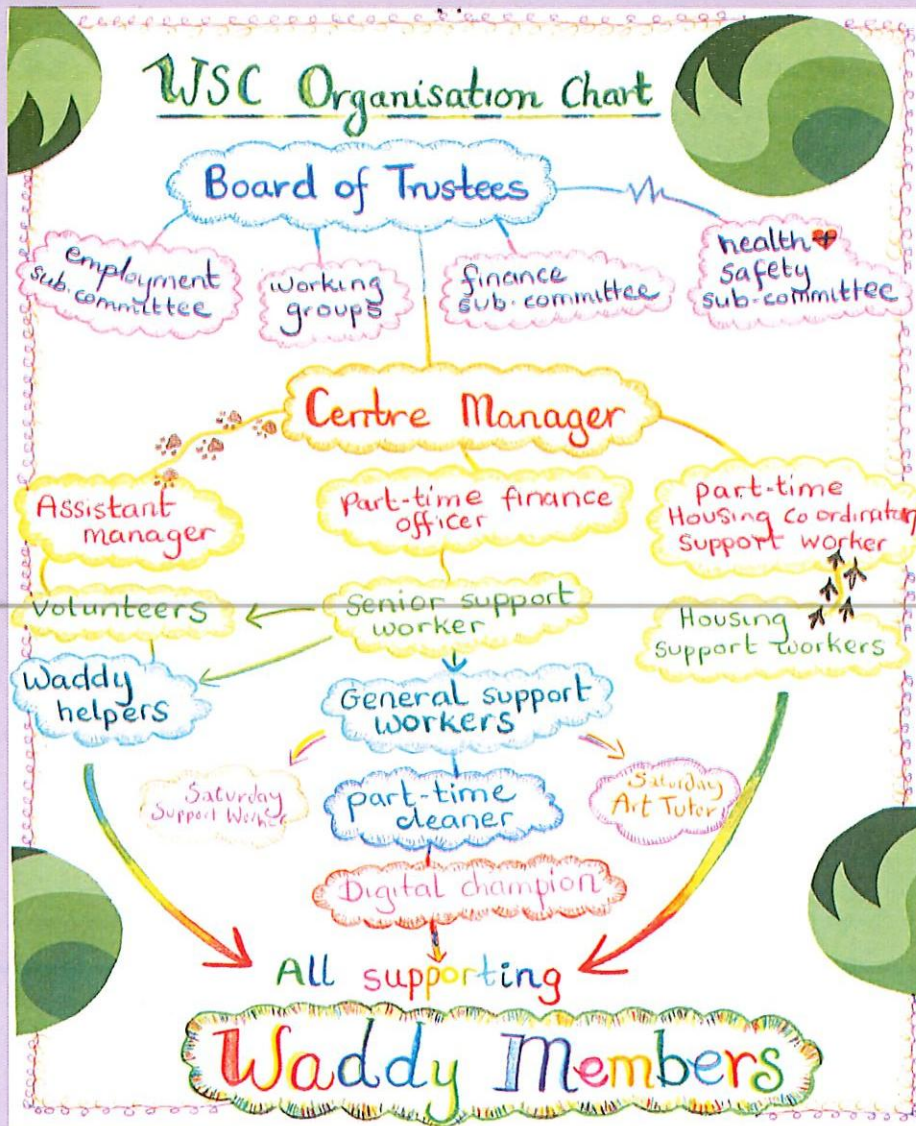
- County Durham Mental Health Strategic Partnership Board
- County Durham Mental Health Provider & Stakeholder Forum
- Mental Health Anti Stigma and Discrimination Group – 'Stamp it Out.'
- Partners in the Durham Mental Wellbeing Alliance.

WSC has relationships with many other organisations. It is a member of umbrella and infrastructure organisations in the voluntary sector, and has close connections and receives generous support from several charitable trusts. The Centre liaises with Durham Community Action and provides volunteering opportunities.

Member's Art Work.



# Waddington Street Centre Limited - Organisational Chart 2021/22



## Staffing

WSC currently has 13 paid staff members.

- Ali Lee – Centre Manager
- Claire McGrother – Finance Officer
- Craig Rundle – Saturday Art Tutor & YASC Support Worker
- Fergus Grant – Support Worker / Housing Support Worker
- Helen Fox – Support Worker
- Helen Ogilvie – Support Worker
- Katie Robson- Housing Support Worker ( left October 2021)
- Paula Cresswell – Senior Support Worker
- Peter Graham-Smith – Administration Officer
- Sam Mason – Housing Co-ordinator
- Sandie Greenwood – Digital Champion
- Steve Wakefield – Assistant Manager

The Centre also has up to 15 voluntary workers helping to provide services and support, including volunteering inputs from Board members. We also have members who take on formalised helping roles. These 'Waddy Helpers' have worked hard over the last year to support peers and assist with fundraising activities for our 40th anniversary. Their support is invaluable and appreciated by our community. Well done everyone!



Waddy Helper

## What our members say.....

There's always a warm welcome and smiling faces at the Centre

Thanks for everything Waddy, don't know what I'd do without you.

Love getting out on trips again. The farm was amazing!

Its Great to have the courses running again. They really help you take your mind off things when everything feels tough.

Fantastic staff, always willing to go the extra mile. It's a relief to know people are there for you.

Thanks for doing the Memorial Day. It meant a lot to know that people are remembered.

Click your heels 3 times and say....  
"There's no place like Waddy"

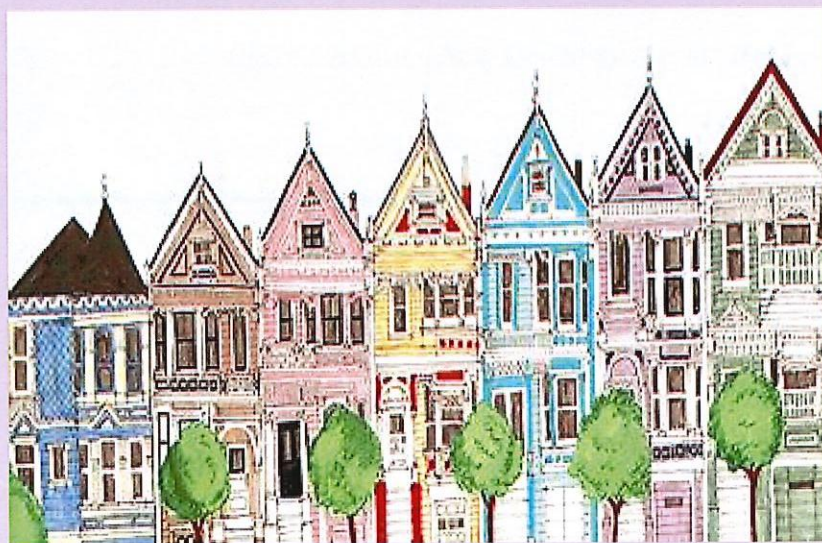
## Housing Support

WSC provides supported tenancies in association with the Hospital of God at Greatham charity, St Margaret's Church in Durham and Davison Holdings. Housing support workers are funded through the former Supporting People scheme commissioned by Durham County Council. At any one time we have 10 tenants and 4 floating support places. There is a two-way relationship between homelessness and mental health. Our aim is to provide a safe, supportive environment where people can develop the skills to move onto and maintain their own tenancy. Having a safe and stable home is the foundation to getting back on track and leading a healthier and happier life,

Our housing team also provides a discharge service to patients leaving Lanchester Road Hospital. Supporting people at this crucial time provides much needed comfort to people at their most vulnerable and hugely reduces the risk of readmission.

Tenants can also benefit from accessing our resource centre and all of the services it provides

From April 2022 we will be stepping away from supported accommodation provision due to our involvement in the Durham Mental Wellbeing Alliance. We have focused on ensuring that our tenants are fully supported to find new properties and to adjust the changes. It is the end of an era for us but we are excited to embrace the change and try new things.



## Numbers of people supported in the last year.



26 Participants per week – Men's Cree



29 Participants per week – Women's Cree



97 Participants per term - New College Durham Courses



69 Participants in the last year – Waddy Feel Good Service



97 Participants per week – Daily Social Sessions



22 Participants per week – Saturday Support Group.



20 people were supported across Housing, Floating Support and Lanchester Rd Hospital Discharge services.

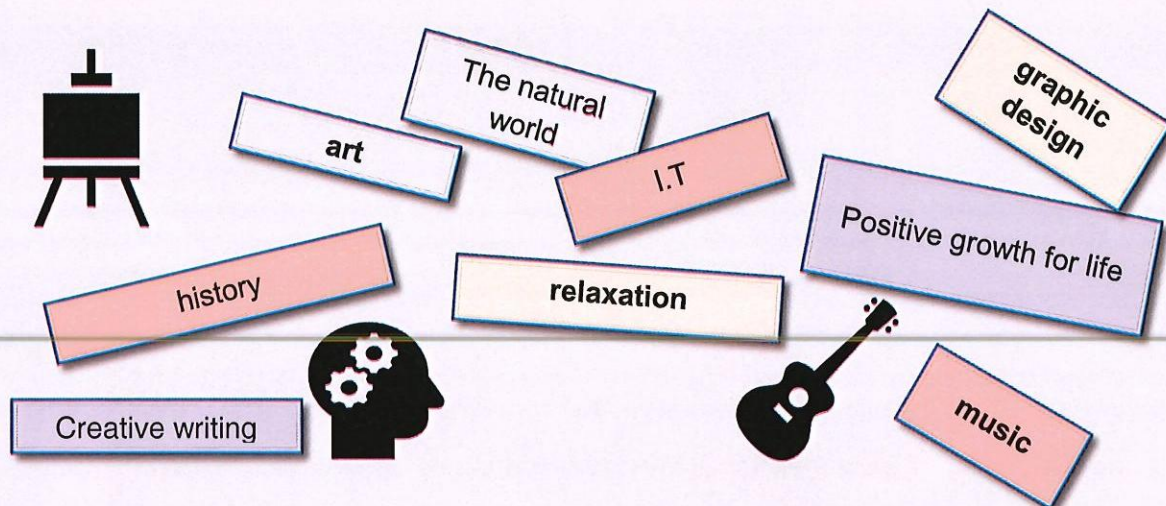


16 people were supported by the Young Adult Support Café (YASC)

## Learning based activities

Our courses and the opportunities they bring for personal development are paramount. It has been wonderful to have them up and running again. It is easy to misplace your confidence and former interests when you are ill. Our courses give people the opportunity to try new things in a supportive and non-pressured environment. Our learners are able to discover and develop skills and knowledge which promotes better wellbeing and self-esteem. They take on new identities as artists, writers and musicians. Our Centre is packed to the rafters with highly creative and talented folks. Our job is just to help them find and recognise their true abilities.

Thank you to New College Durham and their tutors. We are proud to be part of such a positive partnership which brings so much benefit to our members.

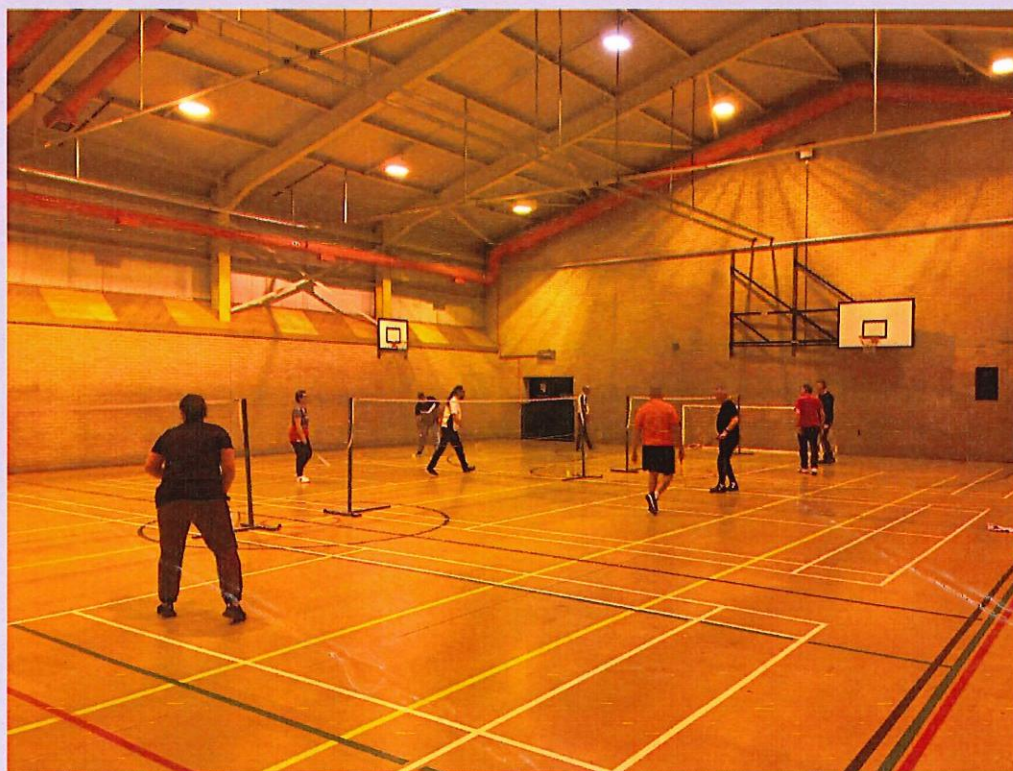


## Waddy Feel Good Service (WFGS)

Through Durham County Council Adults and Health funding the WFGS provides a number of activities for people attending the centre and users of partner organisations. Research has shown that people with mental health problems are less likely to engage in physical activity unless it is provided in an environment where people can be supported and permitted to participate at their own level. For some this is very basic and this level is regularly missed by other opportunities provided within local communities.

It has therefore been wonderful to resume our wellbeing activities since September 2021. Now, more than ever, people need to get back to regular exercise after two years of decreased activity. Getting to community sports facilities has never been easier now that we have our beautiful new bus.

During Covid Restrictions, the most common question we were asked was: "When's Football back on?"



### **Successes and achievements in 2021/2022**

- **Celebrating our 40<sup>th</sup> Anniversary.**
- **Becoming part of the Durham Mental Wellbeing Alliance.**
- **Raising £40,000 and buying a new minibus.**
- **Holding our first Memorial Day in November 2021.**
- **Started to take new referrals again since August 2021.**
- **Returning to more usual operations, post Covid restrictions.**
- **Taking part in research into mental health and poverty.**
- **Having our first 'Waddy's Got Talent' event.**
- **Two visits from Mary Kelly, MP.**
- **Making Lanterns for the Lumiere festival.**
- **Continuing to support our members through Covid.**

### **Aspirations for 2022/23**

- **Maintaining good financial health.**
- **Supporting our tenants to comfortably move on from our housing provision.**
- **Recruitment and training of new volunteers.**
- **Developing stronger Co-production activities for WSC and Alliance Service Users.**
- **Resuming our café service.**

## **Other Groups and Centre Activities**

### **Young Adult Support Café (YASC) 16 -21.**

Between January – September 2021 YASC met weekly over Zoom. Whilst it could be assumed that young adults are tech confident it was obvious that Zoom couldn't compete with the benefits of meeting in person. We were thrilled to bring the live group back in early September and it was wonderful to have that youthful energy about the building again. Our off-shoot peer support group aimed at young adults aged 21-25 did however continue to their support for one another via Zoom. This proved particularly helpful for a couple of group members who were in hospital.

We continue to enjoy a strong working relationship with our partners, Investing in Children. We are proud to support our young adults and hope to attract future funding so that this important work can be continued.

### **Men's and Women's Crees.**

Our Crees allow us to provide gender-specific groups outside of our day time operations. These informal, Co-produced groups are aimed to create safe, social spaces where peers can offer support to one another, form new friendships and choose the activities they enjoy. Since resuming these live groups in August 2021, we've been on trips, played bingo, exercised our lungs with karaoke, created beautiful crafts and explored wellbeing activities which promote better physical and mental health. Pizza eating has also been involved along the way. Despite our breaks due to Covid these groups have been as popular as ever and are a real testament to the importance of providing people with the opportunity to have a good time.

### **Saturday Support.**

Probably one of our most popular and important sessions. Historically people told us repeatedly that support over weekends was often a major gap in services. We have been proud to offer Saturday support for the past few years. Due to Covid and staff capacity we did have to take a break in the early part of 2021. The group was very much missed by those who relied upon its friendly and laid-back ambience. Now that the group is operating once more it is clear that this session is much beloved and hugely essential.

**What we do and how it impacts is always best described by our members.**

### Waddington Street Centre

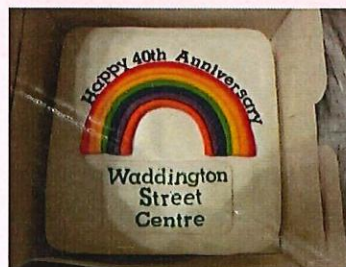
First crossed the threshold of this place in 2003,  
And found some reassurance – such a godsend unto me.  
Had spent five awkward months whilst on a psychiatric ward,  
But thankfully the Centre struck a very happy chord.  
Felt a little shy at first and didn't really chat,  
But soon I came out of my shell to speak of this and that.  
Such as what I had gone through, plus how life became a chore,  
Had never met so many souls who understood before.  
Yet medication issues meant some harsh and bitter times,  
I even quit my writing class, no longer writing rhymes.  
The years passed pretty slowly and yet every now and then,  
Was lucky to find progress through expression with my pen.  
My care coordinator spoke one day, suggesting something clear,  
A sensible return to an environment so dear.  
Met new friends Gary, Gail and Ian along with many more,  
And good friend Alex Birch whom I had met some years before.  
Supporting one another and in harsh times seek to laugh,  
And sound advice available from all the splendid staff.  
Bless our lovely building and our moments spent here too,  
Hellos and smiles are wonderful from every one of you.  
The therapeutic visits keep us going week to week,  
Along with our fundraising for the goal that we all seek.  
Your kind donations would be great to give a helping hand,  
We're needy of a minibus – our target, forty grand.  
Even just a pound or two would keep our mission going,  
Or anything to help – thanks for the kindness you are showing.  
Ensuring more fine episodes that members shall unfold,  
Waddington Street Centre throughout forty years so bold.

*Christopher Short*

**We can't do our important work without the help and support of so many people.....**

**Particular thanks must go to; Support Staff, Volunteers, Tutors, the Waddington Street United Reformed Church, New College Durham, Durham County Council, North East Commissioning Services, Donors and all of our Waddy friends and supporters listed below:**

- Irene Orton Monthly Donation
- Jenny S Osborn
- Edward Johnston
- Bob Kelly
- David Blazey
- Prof Alan R Townsend
- Paula & Matt Fallon
- Donation in memory of Lesley Brooks
- Joyce Walker
- Steven English
- Janet Atfield
- Fred Robinson
- David Brien
- Ronald Todd
- Jeff Dean
- Miss Thomas
- Jeff Dean
- Terence and Diana Finley
- Freeman of Durham City
- Margaret Jeeves
- Land Registry Durham Charity Committee
- Alex Birch
- Nosowskli
- Shakespeare Temperance Trust
- Mrs Howatt
- Bob Kelly Donation
- Marcus Hargis
- Poetry Sales
- DCC Minibus Appeal
- Susan Pitts
- Arthur Banister memorial Donations
- David Gelson
- David Granath
- St Oswald's
- J Goodlife
- Henry Smith Charity
- Artichoke (Lumiere)
- G Broughton
- Ruth Crofton
- New College, Durham
- Durham County Council Adults and Health Services
- Durham County Council Public Health
- Tees, Esk and Wear Valleys NHS Trust including Lanchester Road Hospital, Primrose Lodge and County Durham Recovery College
- North of England Commissioning Support Unit
- Kevan Jones MP
- Mary Foy MP
- County Durham Community Foundation
- Investing in Children
- Durham County Carers Support
- Breathing Space
- Countywide Service User and Carer Forum
- Durham University Student Community Action
- Waddington Street United Reformed Church
- St Margaret's Centre
- RT Projects
- Aspire Learning Support and Wellbeing Home Group
- St Margaret's Parochial Church Council
- Job Centre Plus
- Mental Health North East
- Davison Holdings
- County Durham Health Watch
- Shakespeare Temperance Trust
- Millburngate Partnership/Tolent
- Stamp it Out



**REPORT OF THE TRUSTEES  
FOR THE YEAR ENDED 31 MARCH 2022**

The trustees who are also directors of the charity for the purposes of the Companies Act 2006, present their report with the financial statements of the charity for the year ended 31 March 2022. The trustees have adopted the provisions of Accounting and Reporting by Charities: Statement of Recommended Practice applicable to charities preparing their accounts in accordance with the Financial Reporting Standard applicable in the UK and Republic of Ireland (FRS 102) (effective 1 January 2019).

**STRUCTURE, GOVERNANCE AND MANAGEMENT**

**Governing document**

The charity is controlled by its governing document, a deed of trust, and constitutes a limited company, limited by guarantee, as defined by the Companies Act 2006.

**REFERENCE AND ADMINISTRATIVE DETAILS**

**Registered Company number**

02330506 (England and Wales)

**Registered Charity number**

701514

**Registered office**

3 Waddington Street  
Durham City  
DH1 4BG

**Trustees**

J F F Robinson (Chair)  
J Dean (Treasurer)  
D W Rushton (Deputy Chair)  
W R Kelly  
K Parker  
D Rippon  
L Toms  
D Shipman  
D Blazey  
J Lamb  
J Dodson (appointed 8/8/2022)

**Company Secretary**

D Blazey

**Independent Examiner**

David Holloway BA(hons) FCA DChA  
ICAEW  
Ribchesters  
Chartered Accountants  
Finchale House  
Belmont Business Park  
Durham  
DH1 1TW

Approved by order of the board of trustees on 26 September 2022 and signed on its behalf by:



3/10/22

D Blazey - Trustee

**INDEPENDENT EXAMINER'S REPORT TO THE TRUSTEES OF  
WADDINGTON STREET CENTRE LTD (REGISTERED NUMBER: 02330506)**

**Independent examiner's report to the trustees of Waddington Street Centre Ltd ('the Company')**

I report to the charity trustees on my examination of the accounts of the Company for the year ended 31 March 2022.

**Responsibilities and basis of report**

As the charity's trustees of the Company (and also its directors for the purposes of company law) you are responsible for the preparation of the accounts in accordance with the requirements of the Companies Act 2006 ('the 2006 Act').

Having satisfied myself that the accounts of the Company are not required to be audited under Part 16 of the 2006 Act and are eligible for independent examination, I report in respect of my examination of your charity's accounts as carried out under section 145 of the Charities Act 2011 ('the 2011 Act'). In carrying out my examination I have followed the Directions given by the Charity Commission under section 145(5) (b) of the 2011 Act.

**Independent examiner's statement**

Since your charity's gross income exceeded £250,000 your examiner must be a member of a listed body. I can confirm that I am qualified to undertake the examination because I am a registered member of ICAEW which is one of the listed bodies.

I have completed my examination. I confirm that no matters have come to my attention in connection with the examination giving me cause to believe:

1. accounting records were not kept in respect of the Company as required by section 386 of the 2006 Act; or
2. the accounts do not accord with those records; or
3. the accounts do not comply with the accounting requirements of section 396 of the 2006 Act other than any requirement that the accounts give a true and fair view which is not a matter considered as part of an independent examination; or
4. the accounts have not been prepared in accordance with the methods and principles of the Statement of Recommended Practice for accounting and reporting by charities (applicable to charities preparing their accounts in accordance with the Financial Reporting Standard applicable in the UK and Republic of Ireland (FRS 102)).

I have no concerns and have come across no other matters in connection with the examination to which attention should be drawn in this report in order to enable a proper understanding of the accounts to be reached.



David Holloway BA(hons) FCA DChA  
ICAEW  
Ribchesters  
Finchale House  
Belmont Business Park  
Durham  
DH1 1TW

26 September 2022

**WADDINGTON STREET CENTRE LTD**

**STATEMENT OF FINANCIAL ACTIVITIES  
FOR THE YEAR ENDED 31 MARCH 2022**

	Notes	Unrestricted funds £	Restricted funds £	2022 Total funds £	2021 Total funds £
<b>INCOME AND ENDOWMENTS FROM</b>					
Donations and legacies	2	48,108	-	48,108	16,445
<b>Charitable activities</b>					
Waddington Street Resource Centre		113,116	64,137	177,253	158,052
Floating Support		6,819	-	6,819	7,813
Lanchester Road Hospital Discharge Service		3,693	-	3,693	4,307
Accomodation Support		148,173	-	148,173	150,334
Waddy Feel Good Service		-	22,000	22,000	19,800
Investment income	3	<u>2,217</u>	<u>-</u>	<u>2,217</u>	<u>3,155</u>
<b>Total</b>		<u>322,126</u>	<u>86,137</u>	<u>408,263</u>	<u>359,906</u>
<b>EXPENDITURE ON</b>					
<b>Charitable activities</b>					
Waddington Street Resource Centre		145,962	69,510	215,472	180,388
Floating Support		5,628	-	5,628	7,438
Lanchester Road Hospital Discharge Service		3,632	-	3,632	4,307
Accomodation Support		121,703	-	121,703	134,545
Waddy Feel Good Service		<u>-</u>	<u>23,500</u>	<u>23,500</u>	<u>14,238</u>
<b>Total</b>		<u>276,925</u>	<u>93,010</u>	<u>369,935</u>	<u>340,916</u>
<b>NET INCOME/(EXPENDITURE)</b>		45,201	(6,873)	38,328	18,990
<b>RECONCILIATION OF FUNDS</b>					
<b>Total funds brought forward</b>		<u>353,082</u>	<u>265,591</u>	<u>618,673</u>	<u>599,683</u>
<b>TOTAL FUNDS CARRIED FORWARD</b>		<u><u>398,283</u></u>	<u><u>258,718</u></u>	<u><u>657,001</u></u>	<u><u>618,673</u></u>

The notes form part of these financial statements

BALANCE SHEET  
31 MARCH 2022

	Notes	Unrestricted funds £	Restricted funds £	2022 Total funds £	2021 Total funds £
<b>FIXED ASSETS</b>					
Tangible assets	9	41,417	201,564	242,981	229,815
<b>CURRENT ASSETS</b>					
Debtors	10	8,149	-	8,149	22,751
Cash at bank and in hand		<u>365,048</u>	<u>57,154</u>	<u>422,202</u>	<u>377,555</u>
		373,197	57,154	430,351	400,306
<b>CREDITORS</b>					
Amounts falling due within one year	11	(16,331)	-	(16,331)	(11,447)
		<u>356,866</u>	<u>57,154</u>	<u>414,020</u>	<u>388,859</u>
<b>NET CURRENT ASSETS</b>					
		398,283	258,718	657,001	618,674
<b>TOTAL ASSETS LESS CURRENT LIABILITIES</b>					
		<u>398,283</u>	<u>258,718</u>	<u>657,001</u>	<u>618,674</u>
<b>NET ASSETS</b>					
<b>FUNDS</b>	13				
Unrestricted funds				398,283	353,083
Restricted funds				<u>258,718</u>	<u>265,591</u>
<b>TOTAL FUNDS</b>				<u>657,001</u>	<u>618,674</u>

The charitable company is entitled to exemption from audit under Section 477 of the Companies Act 2006 for the year ended 31 March 2022.

The members have not required the company to obtain an audit of its financial statements for the year ended 31 March 2022 in accordance with Section 476 of the Companies Act 2006.

The trustees acknowledge their responsibilities for

- ensuring that the charitable company keeps accounting records that comply with Sections 386 and 387 of the Companies Act 2006 and
- preparing financial statements which give a true and fair view of the state of affairs of the charitable company as at the end of each financial year and of its surplus or deficit for each financial year in accordance with the requirements of Sections 394 and 395 and which otherwise comply with the requirements of the Companies Act 2006 relating to financial statements, so far as applicable to the charitable company.

These financial statements have been prepared in accordance with the provisions applicable to charitable companies subject to the small companies regime.

The financial statements were approved by the Board of Trustees and authorised for issue on 26 September 2022 and were signed on its behalf by:

 3/10/22

D Blazey - Trustee

The notes form part of these financial statements

NOTES TO THE FINANCIAL STATEMENTS  
FOR THE YEAR ENDED 31 MARCH 2022

1. ACCOUNTING POLICIES

**Basis of preparing the financial statements**

The financial statements of the charitable company, which is a public benefit entity under FRS 102, have been prepared in accordance with the Charities SORP (FRS 102) 'Accounting and Reporting by Charities: Statement of Recommended Practice applicable to charities preparing their accounts in accordance with the Financial Reporting Standard applicable in the UK and Republic of Ireland (FRS 102) (effective 1 January 2019)', Financial Reporting Standard 102 'The Financial Reporting Standard applicable in the UK and Republic of Ireland' and the Companies Act 2006. The financial statements have been prepared under the historical cost convention.

**Income**

All income is recognised in the Statement of Financial Activities once the charity has entitlement to the funds, it is probable that the income will be received and the amount can be measured reliably.

- Voluntary income is received by way of grants and donations are included in full in the Statement of Financial Activities when the charity becomes entitled. Grants, where entitlement is not conditional on the delivery of a specific performance by the charity, are recognised when the charity becomes unconditionally entitled to the grant.
- Donated services and facilities are included at the value to the charity where this can be quantified. The value of services provided by volunteers has not been included in these accounts. Assets donated are recognised in full as donations and fixed assets.
- Incoming resources from charitable trading activities are accounted for when earned.
- Grants and fees received for current year expenditure and grants for purchase of fixed assets are recognised in full in the Statement of Financial Activities in the period in which they are received, provided that the conditions for receipt have been complied with.
- Income is deferred only where the criteria for recognition as incoming resources in the Statement of Financial Activities does not exist at the balance sheet date.

**Expenditure**

Liabilities are recognised as expenditure as soon as there is a legal or constructive obligation committing the charity to that expenditure, it is probable that a transfer of economic benefits will be required in settlement and the amount of the obligation can be measured reliably. Expenditure is accounted for on an accruals basis and has been classified under headings that aggregate all cost related to the category. Where costs cannot be directly attributed to particular headings they have been allocated to activities on a basis consistent with the use of resources.

- Costs of generating funds comprise the costs associated with attracting voluntary income and the costs of trading for fundraising purposes including the charity's visitor centres and from the commercial trading activities of the company's subsidiary.
- Direct staff costs have been allocated to the activity categories within the Statement of Financial Activities according to the staff time spent. Other direct costs are allocated according to the activity. Support costs have been apportioned based on an average of all staff time spent that cannot be allocated specifically to one activity.
- Charitable expenditure comprises those costs incurred by the charity in the delivery of its activities and services for its beneficiaries. It includes both costs that can be allocated directly to such activities and those costs of an indirect nature necessary to support them.
- Governance costs include those costs associated with meeting the constitutional and statutory requirements of the charity and include the audit fees and costs linked to the strategic management of the charity.
- All costs are allocated between the expenditure categories of the SOFA on a basis designed to reflect the use of the resource. Costs relating to a particular activity are allocated directly; others are apportioned on

**Allocation and apportionment of costs**

All costs are allocated between the expenditure categories of the Statement of Financial Activities on a basis designed to reflect the use of the resource. Costs relating to a particular activity are allocated directly, others are apportioned on an appropriate basis.

**Tangible fixed assets**

Depreciation is provided at the following annual rates in order to write off each asset over its estimated useful life.

WADDINGTON STREET CENTRE LTD

NOTES TO THE FINANCIAL STATEMENTS - continued  
FOR THE YEAR ENDED 31 MARCH 2022

1. ACCOUNTING POLICIES - continued

**Tangible fixed assets**

Freehold property	- 2% on cost
Improvements to property	- 25% on cost
Plant and machinery	- 20% on cost
Fixtures and fittings	- 35% on cost
Caravan & minibus	- 12.5% on cost
Computer equipment	- 33% on cost

**Taxation**

The charity is exempt from corporation tax on its charitable activities.

**Fund accounting**

Unrestricted funds can be used in accordance with the charitable objectives at the discretion of the trustees.

Restricted funds can only be used for particular restricted purposes within the objects of the charity. Restrictions arise when specified by the donor or when funds are raised for particular restricted purposes.

Further explanation of the nature and purpose of each fund is included in the notes to the financial statements.

**Hire purchase and leasing commitments**

Rentals paid under operating leases are charged to the Statement of Financial Activities on a straight line basis over the period of the lease.

**Pension costs and other post-retirement benefits**

The charitable company operates a defined contribution pension scheme. Contributions payable to the charitable company's pension scheme are charged to the Statement of Financial Activities in the period to which they relate.

2. DONATIONS AND LEGACIES

	2022	2021
	£	£
Donations	<u>48,108</u>	<u>16,445</u>

3. INVESTMENT INCOME

	2022	2021
	£	£
Deposit account interest	<u>2,217</u>	<u>3,155</u>

WADDINGTON STREET CENTRE LTD

NOTES TO THE FINANCIAL STATEMENTS - continued  
FOR THE YEAR ENDED 31 MARCH 2022

4. INCOME FROM CHARITABLE ACTIVITIES

	Waddington Street Resource Centre £	Floating Support £	Lanchester Road Hospital Discharge Service £	
Local authority funding	95,863	6,819	3,693	
Other income	16,283	-	-	
Grants	<u>65,107</u>	<u>-</u>	<u>-</u>	
	<u>177,253</u>	<u>6,819</u>	<u>3,693</u>	
		2022	2021	
	Accommodation Support £	Waddy Feel Good Service £	Total activities £	Total activities £
Local authority funding	139,293	-	245,668	247,598
Other income	8,880	-	25,163	30,076
Grants	<u>-</u>	<u>22,000</u>	<u>87,107</u>	<u>62,632</u>
	<u>148,173</u>	<u>22,000</u>	<u>357,938</u>	<u>340,306</u>

Grants received, included in the above, are as follows:

	2022 £	2021 £
Durham County Council - 2 Cree Projects	8,000	6,000
NHS Community Connector Grant	24,138	-
Durham County Council- Waddy Feel Good Service	22,000	19,800
Investing in Children - National Lottery Community Fund - Y-ASC	10,299	10,299
Durham County Council - Infection Control Grant	6,354	9,750
NHS CCG Digital Worker Grant	-	15,685
Durham Area Action Partnership - COVID 19 Assistance fund.	-	1,098
Y-ASC 21-25 Zoom Project	5,347	-
Durham AAP Mental Health Digital Inclusion	10,000	-
United Reform Church Income from NE	<u>970</u>	<u>-</u>
	<u>87,108</u>	<u>62,632</u>

5. NET INCOME/(EXPENDITURE)

Net income/(expenditure) is stated after charging/(crediting):

	2022 £	2021 £
Depreciation - owned assets	17,504	16,092
Hire of plant and machinery	2,335	2,074
Surplus on disposal of fixed assets	<u>(2,500)</u>	<u>-</u>

**WADDINGTON STREET CENTRE LTD**

**NOTES TO THE FINANCIAL STATEMENTS - continued  
FOR THE YEAR ENDED 31 MARCH 2022**

**6. TRUSTEES' REMUNERATION AND BENEFITS**

There were no trustees' remuneration or other benefits for the year ended 31 March 2022 nor for the year ended 31 March 2021.

**Trustees' expenses**

There were no trustees' expenses paid for the year ended 31 March 2022 nor for the year ended 31 March 2021.

**7. STAFF COSTS**

	2022	2021
	£	£
Wages and salaries	182,544	173,289
Social security costs	6,452	7,280
Other pension costs	<u>5,453</u>	<u>5,453</u>
	<u>194,449</u>	<u>186,022</u>

The average monthly number of employees during the year was as follows:

	2022	2021
Charitable activities	9	9
Office	1	1
Management	<u>2</u>	<u>2</u>
	<u>12</u>	<u>12</u>

No employees received emoluments in excess of £60,000.

**8. COMPARATIVES FOR THE STATEMENT OF FINANCIAL ACTIVITIES**

	Unrestricted funds	Restricted funds	Total funds
	£	£	£
<b>INCOME AND ENDOWMENTS FROM</b>			
Donations and legacies	16,445	-	16,445
<b>Charitable activities</b>			
Waddington Street Resource Centre	115,221	42,831	158,052
Floating Support	7,813	-	7,813
Lanchester Road Hospital Discharge Service	4,307	-	4,307
Accommodation Support	150,334	-	150,334
Waddy Feel Good Service	-	19,800	19,800
Investment income	<u>3,155</u>	<u>-</u>	<u>3,155</u>
<b>Total</b>	<u>297,275</u>	<u>62,631</u>	<u>359,906</u>
<b>EXPENDITURE ON</b>			
<b>Charitable activities</b>			
Waddington Street Resource Centre	126,446	53,942	180,388
Floating Support	7,438	-	7,438
Lanchester Road Hospital Discharge Service	4,307	-	4,307
Accommodation Support	134,545	-	134,545
Waddy Feel Good Service	<u>-</u>	<u>14,238</u>	<u>14,238</u>
<b>Total</b>	272,736	68,180	340,916

**WADDINGTON STREET CENTRE LTD**

**NOTES TO THE FINANCIAL STATEMENTS - continued  
FOR THE YEAR ENDED 31 MARCH 2022**

<b>8. COMPARATIVES FOR THE STATEMENT OF FINANCIAL ACTIVITIES - continued</b>			
	Unrestricted funds £	Restricted funds £	Total funds £
	<u>          </u>	<u>          </u>	<u>          </u>
NET INCOME/(EXPENDITURE)	24,539	(5,549)	18,990
 <b>RECONCILIATION OF FUNDS</b>			
Total funds brought forward	328,543	271,140	599,683
	<u>          </u>	<u>          </u>	<u>          </u>
<b>TOTAL FUNDS CARRIED FORWARD</b>	<u>353,082</u>	<u>265,591</u>	<u>618,673</u>
 <b>9. TANGIBLE FIXED ASSETS</b>			
	Freehold property £	Improvements to property £	Plant and machinery £
<b>COST</b>			
At 1 April 2021	434,402	31,862	52,974
Additions	-	-	-
Disposals	<u>-</u>	<u>-</u>	<u>-</u>
At 31 March 2022	<u>434,402</u>	<u>31,862</u>	<u>52,974</u>
 <b>DEPRECIATION</b>			
At 1 April 2021	211,820	31,862	51,260
Charge for year	8,688	-	1,314
Eliminated on disposal	<u>-</u>	<u>-</u>	<u>-</u>
At 31 March 2022	<u>220,508</u>	<u>31,862</u>	<u>52,574</u>
 <b>NET BOOK VALUE</b>			
At 31 March 2022	<u>213,894</u>	<u>-</u>	<u>400</u>
At 31 March 2021	<u>222,582</u>	<u>-</u>	<u>1,714</u>

**WADDINGTON STREET CENTRE LTD**

**NOTES TO THE FINANCIAL STATEMENTS - continued  
FOR THE YEAR ENDED 31 MARCH 2022**

**9. TANGIBLE FIXED ASSETS - continued**

	Fixtures and fittings £	Caravan & minibus £	Computer equipment £	Totals £
<b>COST</b>				
At 1 April 2021	35,866	29,444	17,444	601,992
Additions	-	29,995	675	30,670
Disposals	<u>-</u>	<u>(29,444)</u>	<u>-</u>	<u>(29,444)</u>
At 31 March 2022	<u>35,866</u>	<u>29,995</u>	<u>18,119</u>	<u>603,218</u>
<b>DEPRECIATION</b>				
At 1 April 2021	35,866	29,444	11,925	372,177
Charge for year	-	1,875	5,627	17,504
Eliminated on disposal	<u>-</u>	<u>(29,444)</u>	<u>-</u>	<u>(29,444)</u>
At 31 March 2022	<u>35,866</u>	<u>1,875</u>	<u>17,552</u>	<u>360,237</u>
<b>NET BOOK VALUE</b>				
At 31 March 2022	<u>-</u>	<u>28,120</u>	<u>567</u>	<u>242,981</u>
At 31 March 2021	<u>-</u>	<u>-</u>	<u>5,519</u>	<u>229,815</u>

**10. DEBTORS: AMOUNTS FALLING DUE WITHIN ONE YEAR**

	2022 £	2021 £
Trade debtors	60	-
Other debtors	20	6,167
Prepayments and accrued income	<u>8,069</u>	<u>16,584</u>
	<u>8,149</u>	<u>22,751</u>

**11. CREDITORS: AMOUNTS FALLING DUE WITHIN ONE YEAR**

	2022 £	2021 £
Bank loans and overdrafts (see note 12)	4,517	-
Trade creditors	3,907	5,677
Other creditors	-	60
Accruals and deferred income	<u>7,907</u>	<u>5,710</u>
	<u>16,331</u>	<u>11,447</u>

**WADDINGTON STREET CENTRE LTD**

**NOTES TO THE FINANCIAL STATEMENTS - continued  
FOR THE YEAR ENDED 31 MARCH 2022**

**12. LOANS**

An analysis of the maturity of loans is given below:

	2022 £	2021 £
Amounts falling due within one year on demand:		
Bank overdrafts	<u>4,517</u>	<u>-</u>

**13. MOVEMENT IN FUNDS**

	At 1.4.21 £	Net movement in funds £	Transfers between funds £	At 31.3.22 £
<b>Unrestricted funds</b>				
Waddington Street Centre	169,686	17,477	88,255	275,418
St Margaret's House	67,789	12,421	-	80,210
Greatham	72,825	14,003	(86,828)	-
Floating Support	1,831	1,192	(3,023)	-
Sherburn Hill Flats	4,296	47	5,657	10,000
Lanchester Road Hospital Discharge Service	-	61	(61)	-
Durham Samaritans Society (Out of Hours)	16,655	-	-	16,655
Minibus Replacement Fund	20,000	-	(14,000)	6,000
Building Maintenance Fund	<u>-</u>	<u>-</u>	<u>10,000</u>	<u>10,000</u>
	353,082	45,201	-	398,283
<b>Restricted funds</b>				
Waddington Street Centre	235,796	(25,683)	-	210,113
Cree Project	3,452	1,166	-	4,618
YP Evening Project	875	1,326	-	2,201
Waddy Feel Good Service	7,798	(1,500)	-	6,298
DCC COVID 19 infection control grant	2,990	(2,990)	-	-
NHS CCG Digital Worker Grant	14,680	(14,680)	-	-
YP Evenings 21 - 25	-	1,350	-	1,350
NHS Community Connector Grant	-	24,138	-	24,138
Durham AAP Mental Health Digital Inclusion	<u>-</u>	<u>10,000</u>	<u>-</u>	<u>10,000</u>
	<u>265,591</u>	<u>(6,873)</u>	<u>-</u>	<u>258,718</u>
<b>TOTAL FUNDS</b>	<u>618,673</u>	<u>38,328</u>	<u>-</u>	<u>657,001</u>

**WADDINGTON STREET CENTRE LTD**

**NOTES TO THE FINANCIAL STATEMENTS - continued  
FOR THE YEAR ENDED 31 MARCH 2022**

**13. MOVEMENT IN FUNDS - continued**

Net movement in funds, included in the above are as follows:

	Incoming resources £	Resources expended £	Movement in funds £
<b>Unrestricted funds</b>			
Waddington Street Centre	163,442	(145,965)	17,477
St Margaret's House	45,007	(32,586)	12,421
Greatham	42,440	(28,437)	14,003
Floating Support	6,820	(5,628)	1,192
Sherburn Hill Flats	60,724	(60,677)	47
Lanchester Road Hospital Discharge Service	<u>3,693</u>	<u>(3,632)</u>	<u>61</u>
	322,126	(276,925)	45,201
<b>Restricted funds</b>			
Waddington Street Centre	-	(25,683)	(25,683)
Cree Project	8,000	(6,834)	1,166
YP Evening Project	10,299	(8,973)	1,326
Waddy Feel Good Service	22,000	(23,500)	(1,500)
DCC COVID 19 infection control grant	6,353	(9,343)	(2,990)
NHS CCG Digital Worker Grant	-	(14,680)	(14,680)
YP Evenings 21 - 25	5,347	(3,997)	1,350
NHS Community Connector Grant	24,138	-	24,138
Durham AAP Mental Health Digital Inclusion	<u>10,000</u>	<u>-</u>	<u>10,000</u>
	<u>86,137</u>	<u>(93,010)</u>	<u>(6,873)</u>
<b>TOTAL FUNDS</b>	<u><u>408,263</u></u>	<u><u>(369,935)</u></u>	<u><u>38,328</u></u>

WADDINGTON STREET CENTRE LTD

NOTES TO THE FINANCIAL STATEMENTS - continued  
FOR THE YEAR ENDED 31 MARCH 2022

13. MOVEMENT IN FUNDS - continued

Comparatives for movement in funds

	At 1.4.20 £	Net movement in funds £	Transfers between funds £	At 31.3.21 £
<b>Unrestricted funds</b>				
Waddington Street Centre	181,312	8,375	(20,000)	169,687
St Margaret's House	70,115	(2,326)	-	67,789
Greatham	55,350	17,475	-	72,825
Floating Support	1,455	376	-	1,831
Sherburn Hill Flats	3,656	640	-	4,296
Durham Samaritans Society (Out of Hours)	16,655	-	-	16,655
Minibus Replacement Fund	-	-	20,000	20,000
	<u>328,543</u>	<u>24,540</u>	-	<u>353,083</u>
<b>Restricted funds</b>				
Waddington Street Centre	259,017	(23,221)	-	235,796
Cree Project	1,344	2,108	-	3,452
DAAP - Peer Mentoring	2,255	(2,255)	-	-
YP Evening Project	2,327	(1,452)	-	875
Waddy Feel Good Service	2,236	5,562	-	7,798
CDDF - IT Digital Champion	3,961	(3,961)	-	-
DCC COVID 19 infection control grant	-	2,990	-	2,990
NHS CCG Digital Worker Grant	-	14,680	-	14,680
	<u>271,140</u>	<u>(5,549)</u>	-	<u>265,591</u>
<b>TOTAL FUNDS</b>	<u>599,683</u>	<u>18,991</u>	-	<u>618,674</u>

WADDINGTON STREET CENTRE LTD

NOTES TO THE FINANCIAL STATEMENTS - continued  
FOR THE YEAR ENDED 31 MARCH 2022

13. MOVEMENT IN FUNDS - continued

Comparative net movement in funds, included in the above are as follows:

	Incoming resources £	Resources expended £	Movement in funds £
<b>Unrestricted funds</b>			
Waddington Street Centre	134,821	(126,446)	8,375
St Margaret's House	42,459	(44,785)	(2,326)
Greatham	46,746	(29,271)	17,475
Floating Support	7,814	(7,438)	376
Sherburn Hill Flats	61,128	(60,488)	640
Lanchester Road Hospital Discharge Service	<u>4,307</u>	<u>(4,307)</u>	<u>-</u>
	297,275	(272,735)	24,540
<b>Restricted funds</b>			
Waddington Street Centre	-	(23,221)	(23,221)
Cree Project	5,999	(3,891)	2,108
DAAP - Peer Mentoring	1,098	(3,353)	(2,255)
YP Evening Project	10,299	(11,751)	(1,452)
Waddy Feel Good Service	19,800	(14,238)	5,562
CDDF - IT Digital Champion	-	(3,961)	(3,961)
DCC COVID 19 infection control grant	9,750	(6,760)	2,990
NHS CCG Digital Worker Grant	<u>15,685</u>	<u>(1,005)</u>	<u>14,680</u>
	<u>62,631</u>	<u>(68,180)</u>	<u>(5,549)</u>
<b>TOTAL FUNDS</b>	<u>359,906</u>	<u>(340,915)</u>	<u>18,991</u>

**WADDINGTON STREET CENTRE LTD**

**NOTES TO THE FINANCIAL STATEMENTS - continued  
FOR THE YEAR ENDED 31 MARCH 2022**

**13. MOVEMENT IN FUNDS - continued**

A current year 12 months and prior year 12 months combined position is as follows:

	At 1.4.20 £	Net movement in funds £	Transfers between funds £	At 31.3.22 £
<b>Unrestricted funds</b>				
Waddington Street Centre	181,312	25,852	68,255	275,419
St Margaret's House	70,115	10,095	-	80,210
Greatham	55,350	31,478	(86,828)	-
Floating Support	1,455	1,568	(3,023)	-
Sherburn Hill Flats	3,656	687	5,657	10,000
Lanchester Road Hospital Discharge Service	-	61	(61)	-
Durham Samaritans Society (Out of Hours)	16,655	-	-	16,655
Minibus Replacement Fund	-	-	6,000	6,000
Building Maintenance Fund	-	-	10,000	10,000
	<u>328,543</u>	<u>69,741</u>	<u>-</u>	<u>398,284</u>
<b>Restricted funds</b>				
Waddington Street Centre	259,017	(48,904)	-	210,113
Cree Project	1,344	3,274	-	4,618
DAAP - Peer Mentoring	2,255	(2,255)	-	-
YP Evening Project	2,327	(126)	-	2,201
Waddy Feel Good Service	2,236	4,062	-	6,298
CDDF - IT Digital Champion	3,961	(3,961)	-	-
YP Evenings 21 - 25	-	1,350	-	1,350
NHS Community Connector Grant	-	24,138	-	24,138
Durham AAP Mental Health Digital Inclusion	-	10,000	-	10,000
	<u>271,140</u>	<u>(12,422)</u>	<u>-</u>	<u>258,718</u>
<b>TOTAL FUNDS</b>	<u><u>599,683</u></u>	<u><u>57,319</u></u>	<u><u>-</u></u>	<u><u>657,002</u></u>

**WADDINGTON STREET CENTRE LTD**

**NOTES TO THE FINANCIAL STATEMENTS - continued  
FOR THE YEAR ENDED 31 MARCH 2022**

**13. MOVEMENT IN FUNDS - continued**

A current year 12 months and prior year 12 months combined net movement in funds, included in the above are as follows:

	Incoming resources £	Resources expended £	Movement in funds £
<b>Unrestricted funds</b>			
Waddington Street Centre	298,263	(272,411)	25,852
St Margaret's House	87,466	(77,371)	10,095
Greatham	89,186	(57,708)	31,478
Floating Support	14,634	(13,066)	1,568
Sherburn Hill Flats	121,852	(121,165)	687
Lanchester Road Hospital Discharge Service	<u>8,000</u>	<u>(7,939)</u>	<u>61</u>
	619,401	(549,660)	69,741
<b>Restricted funds</b>			
Waddington Street Centre	-	(48,904)	(48,904)
Cree Project	13,999	(10,725)	3,274
DAAP - Peer Mentoring	1,098	(3,353)	(2,255)
YP Evening Project	20,598	(20,724)	(126)
Waddy Feel Good Service	41,800	(37,738)	4,062
CDDF - IT Digital Champion	-	(3,961)	(3,961)
DCC COVID 19 infection control grant	16,103	(16,103)	-
NHS CCG Digital Worker Grant	15,685	(15,685)	-
YP Evenings 21 - 25	5,347	(3,997)	1,350
NHS Community Connector Grant	24,138	-	24,138
Durham AAP Mental Health Digital Inclusion	<u>10,000</u>	<u>-</u>	<u>10,000</u>
	<u>148,768</u>	<u>(161,190)</u>	<u>(12,422)</u>
<b>TOTAL FUNDS</b>	<u><u>768,169</u></u>	<u><u>(710,850)</u></u>	<u><u>57,319</u></u>

**Waddington Street Centre**

Included in the Waddington Street Centre restricted funds are funds which have been specifically allocated for the upkeep of the Waddington Street Centre building.

**St Margaret's House, Greatham & Floating Support**

Funds in the above categories relate to funds received to improve and maintain housing services and floating support services.

**Cree Project**

Funds are received to help fund support groups and actives for males and females.

**YP Evening Project**

The YP Evening Project fund is used to support young adults by providing a support café and an art group.

**Waddy Feel Good Service**

Grant received from Durham County Council to provide support to groups who have anxiety and depression and help those people to alleviate symptoms and prevent further deterioration by helping people to improve their physical health through a combination of diet and exercise.

**YP Evening 21 - 25**

The YP Evening 21 - 25 fund is used to provide peer support for young people between the ages of 21 and 25 via the YASC.

**WADDINGTON STREET CENTRE LTD**

**NOTES TO THE FINANCIAL STATEMENTS - continued  
FOR THE YEAR ENDED 31 MARCH 2022**

**13. MOVEMENT IN FUNDS - continued**

**Durham AAP Mental Health Digital Inclusive**

Grant received from Durham County Council to provide funding which will be used towards funding the digital champion worker.

**NHS Community Connector Grant**

The NHS Community Connector Grant will be used to fund a support worker.

**14. RELATED PARTY DISCLOSURES**

There were no related party transactions for the year ended 31 March 2022.

**WADDINGTON STREET CENTRE LTD**

**DETAILED STATEMENT OF FINANCIAL ACTIVITIES  
FOR THE YEAR ENDED 31 MARCH 2022**

	2022	2021
	£	£
<b>INCOME AND ENDOWMENTS</b>		
<b>Donations and legacies</b>		
Donations	48,108	16,445
<b>Investment income</b>		
Deposit account interest	2,217	3,155
<b>Charitable activities</b>		
Local authority funding	245,668	247,598
Other income	25,163	30,076
Grants	<u>87,107</u>	<u>62,632</u>
	<u>357,938</u>	<u>340,306</u>
<b>Total incoming resources</b>	408,263	359,906
<b>EXPENDITURE</b>		
<b>Charitable activities</b>		
Wages	182,544	173,290
Social security	6,452	7,280
Pensions	5,453	5,453
Hire of equipment	2,335	2,074
Rates	4,382	4,276
Insurance	5,276	5,039
Light, heat & water	8,592	9,427
Post, stationery & telephone	7,971	7,934
Volunteers' expenses	5,216	730
Travel expenses	4,644	798
Bank charges	20	-
Repairs & renewals	7,160	15,917
Cleaning	5,958	859
Equipment maintenance	606	-
Housing rents	49,400	49,400
40th Anniversary budget	821	-
Legal and professional	578	644
Cree Projects	12,036	9,813
IT costs	20,043	9,235
Sundry expenses	1,347	2,869
Room hire	2,720	4,500
Rented furniture	5,958	5,795
Licences and subscriptions	410	618
COVID 19 Infection control	9,343	6,760
YP 21 - 25 costs	3,300	-
Depreciation	17,056	16,092
(Surplus)/ deficit on sale of assets	<u>(2,500)</u>	<u>-</u>
	367,121	338,803

This page does not form part of the statutory financial statements

WADDINGTON STREET CENTRE LTD

DETAILED STATEMENT OF FINANCIAL ACTIVITIES  
FOR THE YEAR ENDED 31 MARCH 2022

	2022 £	2021 £
<b>Support costs</b>		
<b>Management</b>		
Management wages	-	(1)
<b>Human resources</b>		
Staff training	714	13
<b>Governance costs</b>		
Accountancy	<u>2,100</u>	<u>2,100</u>
Total resources expended	<u>369,935</u>	<u>340,915</u>
<b>Net income</b>	<u>38,328</u>	<u>18,991</u>

This page does not form part of the statutory financial statements

