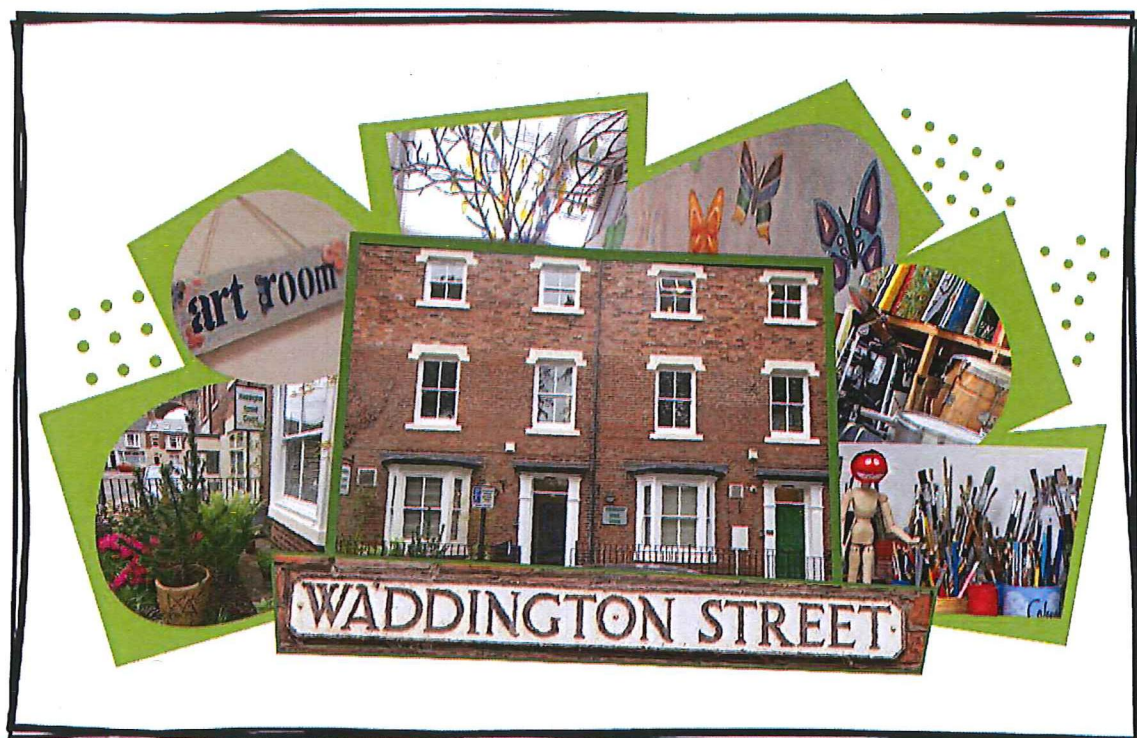


WADDINGTON STREET CENTRE



Annual Report 2020/2021

Charity Registration – 701514
Company Registration - 2330506

A bit about us.....

Waddington Street Centre is a small, independent mental health resource centre with forty years of experience, offering a wide range of services to the local community.

Our activities and services aim to support individual personal development and reduce social isolation and exclusion. Everything we offer is designed to suit a range of interests and needs. We are passionate about mental health and helping people to get back on track.

We believe that people who struggle with their mental health should have a safe, supportive and interesting place to recover. Waddington Street is a community of like-minded people who support one another to have the best possible lives.



At WSC we want you to enjoy yourself, OK?

Reflections on the Last Year – One we'll never forget.

It goes without saying that this year has largely been dominated by the global pandemic – Covid-19. On the 24th of March 2020 we sadly and reluctantly closed our doors to our members. This was a hugely upsetting time and staff and trustees were greatly concerned for members' wellbeing.

Our staff team were amazing and quickly adapted to home working – the first time most of us had ever worked this way. Being able to keep in touch with people and support members through uncertainty, anxiety and loneliness was our great pleasure. In many ways our members coped admirably and it would be fair to say that the WSC team were all very proud of their courage and fortitude.

We discovered Zoom and quickly we were able to connect with colleagues and members. It probably seems normal to most of us now to operate in this way but back in April 2020 it all felt very new. Being able to see people on screen was brilliant but what we sadly, quickly realised was that many of our members were digitally excluded because they did not have access to the internet or a digital device at home. Now a more nationally recognised problem within marginalised groups.

This has continued to be an ongoing issue for our members and after conducting a survey we found that some of the barriers included; not being able to afford a monthly internet bill, being fearful of internet scams and more generally, poor I.T skills.

On the 17th of August 2020 we proudly re-opened our Centre. We operated completely differently to pre-pandemic times and our usual 'come and go as you please' approach was replaced with people attending in support bubbles at designated times, staying 2 metres apart and covering our faces with masks (many of which were kindly made and donated by the Durham Rotary Club) Thanks must also go to the Milburngate partnership. With their help, we returned to a freshly decorated building. We wanted our members' return to feel special and valued.



By October 2020 we were able to re-establish our course provision in partnership with New College Durham. Many of our members had greatly missed the tutors and the courses. We were able to offer an extra session in relaxation and stress management as it seemed the appropriate thing to do. Christmas was a strange period. Our timetable, usually filled with parties, gatherings and general festive activities was somewhat curtailed and for many it acted as a resounding realisation of just how hard, alien and stripped back 2020 had been. Our plans to branch out a little further in 2021 with walking groups and Digital Champion one to one sessions were stopped in their tracks by the traumatic news that we were once again going back into lockdown. Staff returned to delivering support from their dining tables, sofas and spare rooms and our members continued to be brave and patient. It did seem harder this second time around. The Winter months didn't help and many commented that they felt weary and fed up. There was, however, light at the end of the tunnel and in April 2021 we returned to Waddington Street Centre and our community of likeminded people were together again. So, in short, it has been a tough and unusual year but we got through it together with mutual support, hope and resilience.

Here's what our members said:

"My anxiety has been terrible. Having someone on the end of the phone has been reassuring"

"The phone calls kept you going. Having a friendly, familiar voice made the hard days better."

"I really miss my friends at Waddy and I can't wait to see people again. The team have been really supportive."

"My support worker makes me laugh and that helps"

"I felt safe when I returned, safety measures were in place"

Our Formal Charity Objectives, Values and Activities

Our broad formal objectives, as set out in the company's Memorandum of Association, are;

- i. Establishing and promoting any charitable purpose in order to support people with mental health needs***
- ii. This will be undertaken primarily through the provision and management of a resource centre and support for independent living***
- iii. The charity's beneficiaries are principally people living in County Durham***

Our values embrace:

- A person-centred approach - Everyone is important to us: those who work for us and use our services; people in the local community; supporters and carers.
- Respecting individuality and diversity - We value difference and want everyone to be treated with personal dignity and respect, free from discrimination or harassment. We believe everyone has a positive contribution to make.
- Quality driven, open, honest, transparent and accountable - We aim for high standards in all we do. We aim to be efficient and effective.
- Positive about partnerships - We invest in genuine partnership working, striving to create new alliances and new opportunities to help us achieve our aims.

To ensure public benefit:

All our charitable activities focus on providing effective support and meaningful opportunities to adults living in the community who have mental health needs and are undertaken to further our charitable purposes for the public benefit.

**To ensure alignment with statutory requirements and recommendations:
The Centre seeks at all times to engage with mental health guidance and strategies, both national and local. At this time there are seven strategies/reports that have particular significance and give direction to the Centre's strategic aims:**

- No health without mental health - HM Government - February 2011
- Five Year Forward View for Mental Health: One Year On - NHS - February 2017
- County Durham Public Mental Health Report - All the lonely people: social isolation and loneliness in County Durham - December 2014
- County Durham Joint Health and Wellbeing Strategy 2016/2019
- County Durham Joint Strategic Needs Assessment Key Messages 2016
- Self-Harm and Suicide Audit 2012/14 County Durham - Durham County Council - July 2017
- County Durham Mental Health and Wellbeing Strategic Plan 2018/2021

Status

The organisation is a charitable company limited by guarantee, incorporated on 21st December 1988 and registered as a Charity on 16 May 1989.

The company was established under a Memorandum of Association which established the objects and powers of the charitable company and is governed under its Articles of Association.

Company Registration Number	2330506
Charity Registration Number	701514

The Board of Directors

The directors of the charity are its trustees for the purpose of charity law and are collectively referred to as the Board. As set out in the Articles of Association the directors retire by rotation every three years and are eligible for re-election at the Annual General Meeting.

Company Directors / Trustees as at the 2020 AGM:

Louise Toms	Elected 23/11/18	Retires 2021
Fred Robinson (Chair)	Elected 23/11/18	Retires 2021
Jeff Dean (Treasurer)	Elected 29/11/19	Retires 2022
Bob Kelly	Elected 29/11/19	Retires 2022
David Rushton (Deputy Chair)	Elected 27/11/20	Retires 2022
David Shipman	Elected 27/11/20	Retires 2022
David Blazey (Secretary)	Elected 27/11/20	Retires 2023
Kay Parker	Elected 27/11/20	Retires 2023
Daniel Rippon	Elected 27/11/20	Retires 2023
Jen Lamb	Elected 08/03/21	Retires 2021
Erica Jones	Resigned 1/10/20	

Registered Office and Operation Address

3 Waddington Street, Durham City, DH1 4BG.

Independent Examiners

Ribchesters, Chartered Accountants, Finchale House, Belmont Business Park, Durham.
DH1 1TW

Bankers

Lloyds Bank, 19 Market Place, Durham. DH1 3AN

Structure, Governance and Management of the Charity

The organisation's governing documents are the Memorandum of Association and the Articles of Association dated 28th November 2011.

Waddington Street Centre (WSC) is governed by a Board of Directors/Trustees which is responsible for managing the business of the Company. The Board meets approximately every six weeks and receives regular reports from the Centre's Management team, the Treasurer and WSC Members. The Board also has three sub-committees which meet when required and report to the Board. These are the Finance Sub Committee, the Personnel (Employment) sub-committee and the Health & Safety sub-committee. Other working groups are set up by the Board as required.

WSC seeks to have a Board which combines complementary skills and experiences and which has strong member representation. Consequently, individuals may be asked to consider serving as Directors/Trustees because they offer particular skills or experience, come from partner organisations, or are able to offer the perspective of service users (or 'members', as we call them.) WSC encourages and supports members to become formally involved in helping to run the Centre. We do this through focus groups and formal helping roles including; reviewing procedures, buddies and peer support groups. People with lived experience have much to share and contribute. In September 2019, we launched our Waddy Helper initiative – a formalised helping role for WSC members. Our Valued Views Group, made up of our members, meet before each Board meeting. Their thoughts and views are then fed into the Board. Keeping member needs and views at the forefront of decisions is important to our Trustees.

Risk Review

The Board of Directors has conducted an annual review of the major risks to which the charity is exposed and systems have been established to mitigate those risks. The current risk management strategy and risk register were agreed by the Board at their meeting on 23rd August 2021. The Trustees recognise that any major risks to which the charity is exposed need to be reviewed and systems put in place to mitigate those risks. To that end Waddington Street Centre Limited is continually monitoring and managing its risk, reviewing the corporate risk register and ensuring action plans are in place to manage its key risks.

Financial Review

The financial results for the charity are detailed in the annexed Statement of Financial Activities and Balance Sheet, together with the related notes.

In summary, we made a surplus of £18,990 during 2020-2021 (compared to a surplus of £58,897 during 2019-2020). The surplus was in part due to a post-dated grant award received late in the financial year but also relates to Covid 19 implications temporarily suspending our many 'in person' activities with our provision being significantly more of a telephone / virtual service for large parts of the year. This resulted in our service provision costs being lower than usual.

It is expected that public sector funding, further exacerbated by Covid 19, will continue to be under pressure and local authorities (including Durham County Council) could face cuts in their budget. This alongside the new method of working through 'Alliance Commissioning' from April 2022 will potentially place increased pressure on the centre's core income stream the full impact of which we will look to address over the coming 12 months.

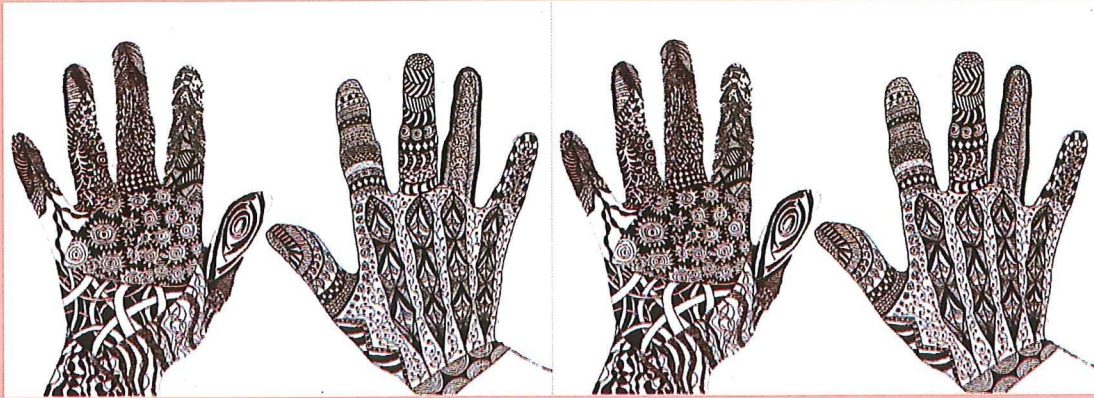
Reserves Policy

Waddington Street Centre provides support to people with significant mental health issues. Hence, many of our members are vulnerable, and are very reliant upon our services.

Therefore, we are very mindful to ensure we can support them for a period of time so that there is opportunity to try to ensure that the future support required by each individual member is in place before they are discharged from our support services. In short, a transition period would be required. For this reason, the board has established a policy whereby free reserves (unrestricted current assets less unrestricted current liabilities) should ideally be at least equal to unrestricted expenditure during the last 12 months plus designated funds and redundancy costs. From the 2020-2021 accounts free reserves currently stand at £341,928. Also, from the 2020-2021 accounts unrestricted expenditure during the last 12 months was £272,736. The board holds designated funds of £20,000 set aside for mini bus replacement at its meeting of 26th April 2021 and for staff redundancy costs of £51,600 (calculation – June 2021). As such, the board is meeting the requirements of its Reserves Policy.

Investment Policy

Although no investments are currently held, the charity has the power to make any investment which the Board sees fit.



Relationships

WSC has extensive relationships with other organisations both in the statutory and voluntary sectors. Relationships and networks include:

- Durham County Council Adult and Health Services. The largest share of WSC's revenue funding comes through long-standing SLA (Service Level Agreement) arrangements with the County Council.
- New College Durham. This Grade 1 OFSTED - rated Further Education College strongly supports the work of the Centre and provides a wide range of educational courses and activities for members.
- Durham County Council Adults and Health Service – Housing. WSC is a provider of housing support services and 'floating support' under the former Supporting People regime. The Centre is also a partner organisation in the Lanchester Road Hospital Discharge Service.
- Housing provision - WSC has relationships with the Master and Brethren of the Hospital of God at Greatham (a Charity), St Margaret's Church, Durham and Davison Holdings Limited. All enabling the provision of supported tenancies.
- NHS Trusts. Regular contacts with health professionals, notably with the Lanchester Road Hospital (Tees, Esk and Wear Valleys NHS Trust).
- Durham County Council Public Health. During 2019/20 we received funding to operate Men's and Women's Crees, a mostly peer support driven model which seeks to reduce social isolation and suicide rates.
- Durham University Community Outreach and Engagement. Work with the University's outreach programme enhances venue and training possibilities for Centre services particularly around physical health activities including the use of football and gym facilities.

In addition to the above, Waddington Street Centre, through its networks and partnerships, sits on the:

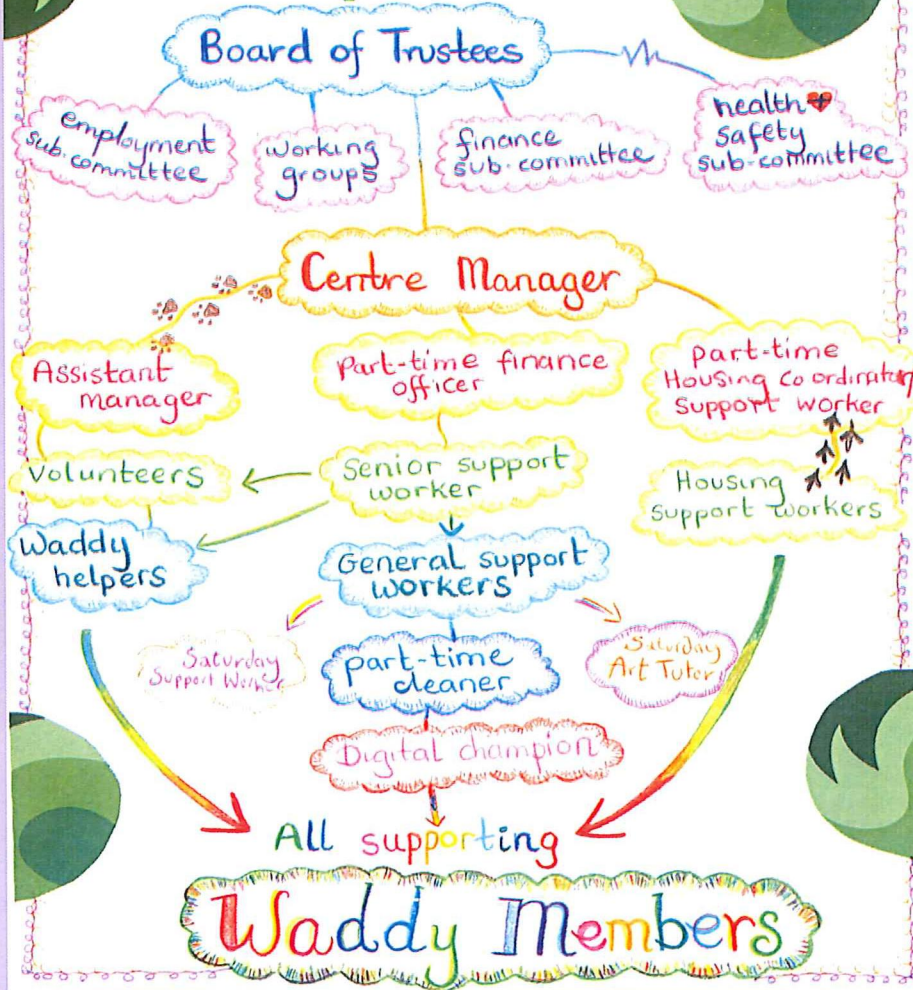
- County Durham Mental Health Strategic Partnership Board
- County Durham Mental Health Provider & Stakeholder Forum
- Mental Health Anti Stigma and Discrimination Group – Stamp it Out.

WSC has relationships with many other organisations. It is a member of umbrella and infrastructure organisations in the voluntary sector, and has close connections with and receives generous support from several charitable trusts. The Centre liaises with Durham Community Action and provides volunteering opportunities at the Centre. WSC also offers student placement opportunities for students of Social Work, Health and Social Care and Community Ministry. For several years now, we have been part of the Duke Engage Programme in partnership with Durham University UK and Duke University, Durham USA. American students are placed within WSC for four weeks to learn about mental health and the voluntary sector (due to Covid -19, this didn't happen in 2020). Training is important and we actively seek to support and inform practitioners of the future.



Member Art Work

WSC Organisation Chart



Staffing

WSC currently has 13 paid staff members.

- Ali Lee – Centre Manager
- Bea Potter - Cleaner
- Claire McGrother – Finance Officer
- Craig Rundle – Saturday Art Tutor & YASC Support Worker
- Fergus Grant – Support Worker / Housing Support Worker
- Helen Fox – Support Worker
- Helen Ogilvie – Support Worker
- Katie Robson – Housing Support Worker
- Paula Cresswell – Senior Support Worker
- Peter Graham-Smith – Administration Officer
- Sam Mason – Housing Co-ordinator
- Sandie Greenwood – Digital Champion
- Steve Wakefield – Assistant Manager

The Centre also has up to 20 volunteers helping to provide services and support, including voluntary inputs from Board members.



Staff care has been more important than ever this year. As we team we are closer than we have ever been. As key workers our staff have ensured that all of our members felt supported, valued and cared about. Keeping in touch with members was a pleasure and in many ways we have been able to spend more time getting to know people better – even those we felt we knew fairly well.

Our weekly team catch ups and Whatsapp group meant that we could keep each other up to date with work but also stay connected as people.

We would not have been able to get through this strange and challenging year if it hadn't been for our dedicated and passionate staff. Everyone played their parts expertly and everyone went the extra mile.

The staff team at WSC are passionate about people and the work we do. The care and wellbeing of our staff is an ongoing commitment. Staff mental health is important too.

Our team of volunteers have also been crucial to successful running of our live sessions – once we reopened. They have helped to make refreshments, chat with and listen to members and keep everything clean and sanitised. We are hugely grateful to everyone who has committed their time, energy and care to Waddington Street Centre.



Housing Support

WSC provides supported tenancies in association with the Hospital of God at Greatham charity, St Margaret's Church in Durham and Davison Holdings. Housing support workers are funded through the former Supporting People scheme commissioned by Durham County Council. At any one time we have ten tenants and four floating support places. There is a two-way relationship between homelessness and mental health. Our aim is to provide a safe, supportive environment where people can develop the skills to move onto and maintain their own tenancy. Having a safe and stable home is the foundation to getting back on track and leading a healthier and happier life,

Our housing team also provides a discharge service to patients leaving Lanchester Road hospital. Supporting people at this crucial time, provides much needed comfort to people at their most vulnerable and hugely reduces the risk of readmission.

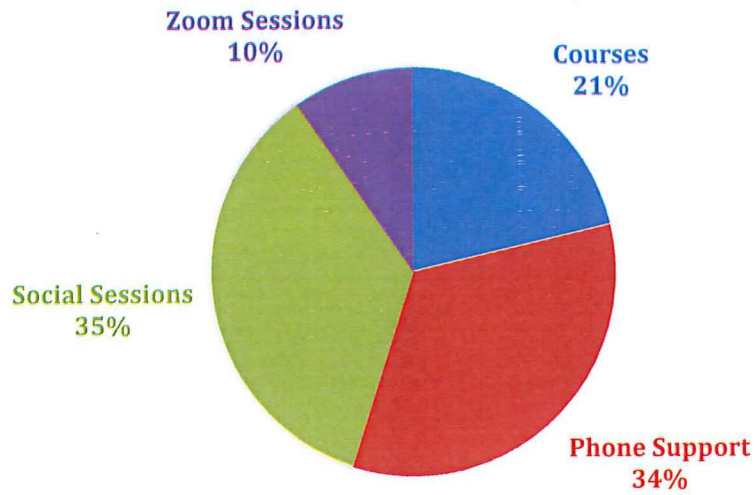
Tenants can also benefit from accessing our resource centre and all of the services it provides

This support has continued remotely during the pandemic with staff providing telephone support or socially distanced support. In the last year we supported 22 in our housing provision.

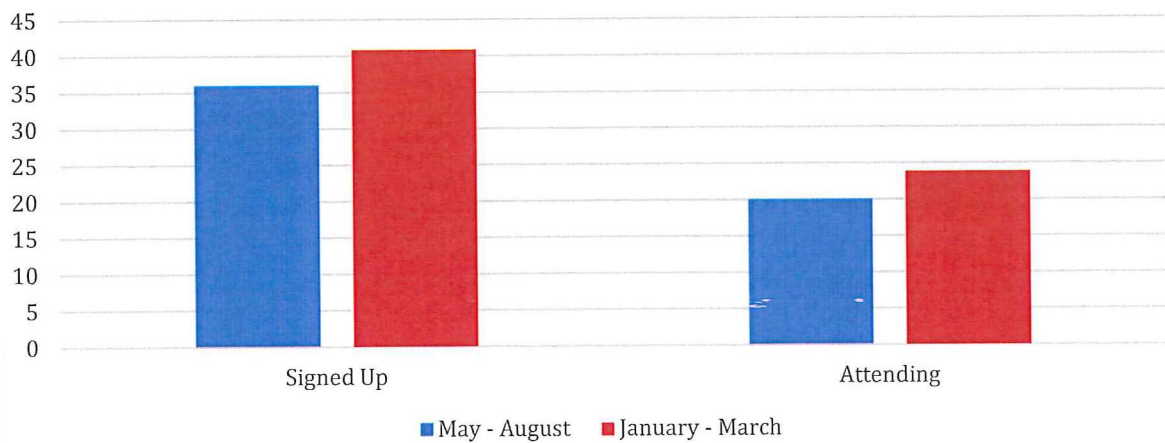


Numbers of people supported in the last year.

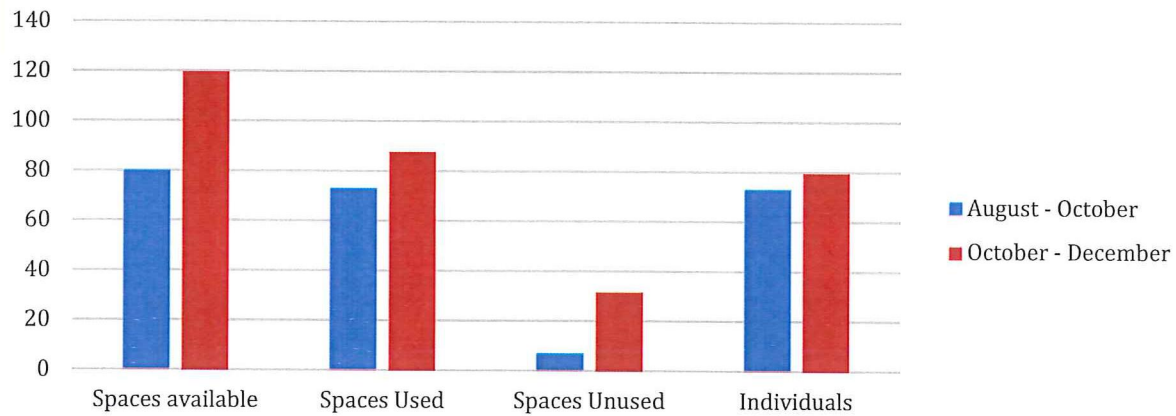
WSC SERVICES 2020/21



Zoom Sessions 2020/21



Social Sessions 2020-21



Waddington Street members have engaged in a variety of ways in this last year.



153 members accessed phone support



97 learners accessed courses



161 members accessed social sessions

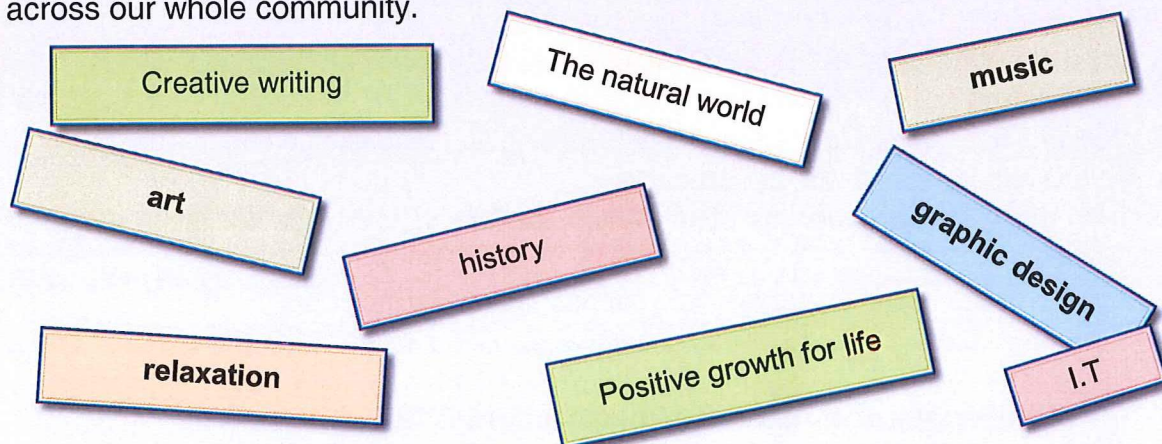


44 members accessed Zoom Drop Ins

Learning based activities

Our courses and the opportunities they bring for personal development are paramount. We were unable to operate in Summer term April 2020 - October 2020. In a survey of our members and their needs it was very apparent how missed the courses and tutors were. We were thrilled to have learners back with us in October and are grateful for all of our tutors who creatively and selflessly readapted their teaching methods to fit in with social distance and minimising cross contamination. There were inevitable challenges, especially in those sessions whereby effective instruction requires close proximity to learners.

However, we made it work and this was largely down to flexibility and willingness across our whole community.



Waddy Feel Good Service (WFGS)

Through Durham County Council Adults and Health funding the WFGS provides a number of activities for people attending the centre and users of partner organisations. Research has shown that people with mental health problems are less likely to engage in physical activity unless it is provided in an environment where people can be supported and permitted to participate at their own level. For some this is very basic, this level being missed regularly by opportunities provided within local communities.

Due to the pandemic many of these activities have been put on hold. This has been particularly frustrating as many members have become more sedentary during this period. Our hope for 2021/2022 is to rebuild these services and get members back into positive routines and engaging in physical health activities. Our first focus will be to initiate walking groups and make the most of the spring and summer weather. This is also in keeping with this year's mental health awareness week theme – Nature.

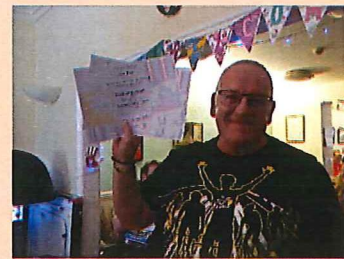
Successes and achievements in 2020/2021

- Supporting 153 members through the pandemic
- Only furloughing 2 members of staff in the first lockdown and no one in the second.
- Upgrading our telephones to provide better remote support
- Supporting our staff team and strengthening the team by offering increased mutual support and more flexible working arrangements
- Raising £19,000 in donations
- Between August – December operating a Covid safe building and no one became ill
- Linking in with other community services to meet the needs of members
- Using Zoom and Teams for the first time
- Sourced new funding for our Digital Champion role so that we can continue to tackle digital exclusion
- Recruiting 2 new members of support staff (Housing and resource centre) in August which has hugely helped with our capacity.
- Working with our neighbours, the United Reformed Church, to provide additional space for members.
- Production of two important surveys into support and digital inclusion

Challenges and Areas for Improvement in 2020/21

- Being unable to provide in person support for the early parts of each year
- Members not having access to the internet and digital devices at home
- Having to limit and restrict member access in times we were physically open
- Ensuring that funding is secure
- Voids in our supported housing due to limiting cross contamination risks for established tenants.

- Hoping to get a new minibus so that we can get people out and about once it is safe to do so.
- Re – establishing our services and being able to safely accommodate new referrals
- Being able to understand and address post Covid support needs.



Our Hopes and Focus for the Future:

- Reopening our Centre on 12th April 2021 and welcoming back our members for social groups and education-based activities.
- Re-opening our café and evening and weekend services.
- Re-introducing; Crees, our young adult support sessions, physical activities within community venues such as Maiden Castle and Meadowfield sports centre.
- Planning for and celebrating our 40th anniversary in November 2021.
- Developing a telephone support service to run alongside our 'in-person' support.
- Maintaining our core funding through Alliance Commissioning.
- Becoming part of a successful Mental health Alliance – working in partnership with providers across the County to provide good quality, post Covid, mental health services.
- Taking new referrals – we are anticipating greater need post Covid.
- Continuing to be committed to creative, innovative and person - centred support.
- Visiting other organisations to learn from and be inspired by.
- Developing more user engagement activities.
- Diversifying our Board.

Reflections of a support worker

I feel we are about relationships, the long haul, not only fixing and solutions. We are about holding people so they can be themselves and have space to feel, hurt, laugh, cry, share, learn, grow and be recognized as a whole being (maybe therefore we are a holistic service as we are open to meeting the whole person not just one part, one need or one skill they have).

WSC hears people and says that's ok, you are welcome here.

WSC is the place you come to because this is the place where you are accepted for all the things other parts of society, other friends and sometimes family don't understand or are unable to accept. WSC is a place of understanding, shared experiences, shared 'realities. This is something we all need (members, staff and wider society) and is foundational to positive mental health whatever our issues, challenges or concerns.

Acceptance reduces loneliness, another key factor in mental health. WSC is a place where people no longer feel alone. Relationships are formed, the masks drop and people have a safe space to be themselves before going back out to face the daily challenges. WSC is respite, an energizer, time out from pretending and loneliness and feeling like you don't fit in. Therefore, it is a lifesaver, it is a space that means people can keep on keeping on.

WSC has an energy unlike other spaces because it is real, it is honest, its agenda is the people (member, staff and trustees). The agenda is not the outcomes so energy is not misplaced. The outcomes are a natural and spontaneous result of the genuine and sincere input which is building positive relationships.

WSC has been challenged in the past about members becoming dependent on the centre and that people become 'comfortable' or 'stuck'. Members use other words to describe WSC, such as 'community' and 'family'.

We have been encouraged for decades now to provide 'care in the community' to relieve the pressure on the NHS, hospitals, social and health care providers. WSC does this by providing the space where people can belong. Belonging is a fundamental aspect of human nature and wellbeing. Many people belong to communities and call them their families, including churches and other faith communities, football clubs and supporter groups, working men's clubs, gyms, music venues and gigs. I don't believe these other groups are asked to move on, see progress, record outcomes, measure successes. These communities and groups are in themselves the purpose and promote wellbeing through being a part of them. Mental health is a key part of people's lives and for some (sadly) their identity. Society points to their mental health as saying you don't quite fit in here. They do fit in at WSC: this is their group, their home, what sustains them. WSC is not just about mental health, it is more holistic and is led by members' other interests, hopes and needs. The point is it does not ignore or dismiss the mental health element of life that

we all experience, some more than others. Being a part of the WSC community keeps people independent, keeps them living in their communities and keeps them out of hospital. If we don't want people institutionalized we need to provide spaces for them to be, especially when they are unwell. Mental health fluctuates for us all, some more than others. WSC is there to journey with people. For some this is a light, one-time contact, for others it is a longer term in-and-out as needed. For others still, it is the scaffolding that keeps them going and is therefore long-term. The scaffolding offered by WSC is flexible too, so can be minimal when this is required and boosted to maximum when needed. WSC does not 'stop' people 'becoming well' or hold them back but is prepared to move with the member as that member requires. It is person-centred and promotes wellbeing. WSC allows for autonomy of the member and safe self-choices which many members have had taken away from them and again been detrimental to their mental health and self-value.

There is no utopia where mental illness is cured!! Mental health is a forever thing. Mental health needs understanding. WSC offers understanding. MH needs acceptance. WSC offers acceptance. MH needs belonging and commitment. WSC offers belonging and commitment.



We can't do our important work without the help and support of so many people.....

Particular thanks must go to; Support Staff, Volunteers, Tutors, the Waddington Street United Reformed Church, New College Durham, Durham County Council, North East Commissioning Services, Donors and all of our Waddy friends and supporters listed below:

- o New College, Durham
- o Durham County Council Adults and Health Services
- o Durham County Council Public Health
- o Tees, Esk and Wear Valleys NHS Trust including Lanchester Road Hospital, Primrose Lodge and County Durham Recovery College
- o North of England Commissioning Support Unit
- o Roberta Blac
- o Kevan Jones MP
- o Mary Foy MP
- o County Durham Community Foundation
- o Swinburne and Maddison Solicitors
- o Framwellgate Moor Bridge Club
- o Durham Elvet Rotary Club
- o John Frampton.
- o B Harrison
- o M Howatt
- o Tom Robinson
- o S Moyes
- o Mr Clifford
- o Gary Broughton
- o Ms Smith
- o John Mawson
- o Ruth Crofton
- o Durham County Council Welfare Rights
- o Durham Constabulary
- o Durham Community Action
- o If U Care Share
- o The Master & Brethren of The Hospital of God at Greatham
- o The Samaritan Society
- o St Nicholas Church, Durham
- o Pioneering Care Partnership
- o St John's Church, Neville's Cross, Durham
- o Durham University Community Outreach & Engagement
- o Integrated Care System (ICS)
- o Durham AAP.
- o P&M Lovell Charitable Trust.
- o Paula Fallon-Jones
- o Nancy Vanderpuye
- o Bob Kelly
- o Evelyn Poole
- o Nigel Woollaston
- o Cameron Ward
- o David Kane
- o J S Osbourne
- o Investing in Children
- o Durham County Carers Support
- o Breathing Space
- o Countywide Service User and Carer Forum
- o Durham University Student Community Action
- o Waddington Street United Reformed Church
- o St Margaret's Centre
- o RT Projects
- o Aspire Learning Support and Wellbeing
- o Home Group
- o St Margaret's Parochial Church Council
- o Job Centre Plus
- o Mental Health North East
- o Davison Holdings
- o County Durham Health Watch
- o Shakespeare Temperance Trust
- o Millburngate Partnership
- o Lloyds Bank
- o Dave Shipman
- o Dr C L Welch
- o S Felton
- o Sam Mason and Georgina Fuller
- o St Mary's PCC
- o Durham University Lifting Club
- o J E Nichol



**REPORT OF THE TRUSTEES
FOR THE YEAR ENDED 31 MARCH 2021**

The trustees who are also directors of the charity for the purposes of the Companies Act 2006, present their report with the financial statements of the charity for the year ended 31 March 2021. The trustees have adopted the provisions of Accounting and Reporting by Charities: Statement of Recommended Practice applicable to charities preparing their accounts in accordance with the Financial Reporting Standard applicable in the UK and Republic of Ireland (FRS 102) (effective 1 January 2019).

STRUCTURE, GOVERNANCE AND MANAGEMENT

Governing document

The charity is controlled by its governing document, a deed of trust, and constitutes a limited company, limited by guarantee, as defined by the Companies Act 2006.

REFERENCE AND ADMINISTRATIVE DETAILS

Registered Company number

02330506 (England and Wales)

Registered Charity number

701514

Registered office

3 Waddington Street
Durham City
DH1 4BG

Trustees

J F F Robinson (Chair)
J Dean (Treasurer)
D W Rushton (Deputy Chair)
W R Kelly
K Parker
D Rippon
L Toms
D Shipman
D Blazey
J Lamb (appointed 8/3/2021)
E M Jones (resigned 1/10/2020)

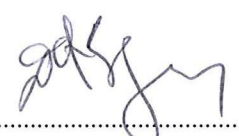
Company Secretary

D Blazey

Independent Examiner

David Holloway BA(hons) FCA DChA
ICAEW
Ribchesters
Chartered Accountants
Finchale House
Belmont Business Park
Durham
DH1 1TW

Approved by order of the board of trustees on ^{4th October 2021} and signed on its behalf by:

X 
.....
D Blazey - Trustee

**INDEPENDENT EXAMINER'S REPORT TO THE TRUSTEES OF
WADDINGTON STREET CENTRE LTD (REGISTERED NUMBER: 02330506)**

Independent examiner's report to the trustees of Waddington Street Centre Ltd ('the Company')

I report to the charity trustees on my examination of the accounts of the Company for the year ended 31 March 2021.

Responsibilities and basis of report

As the charity's trustees of the Company (and also its directors for the purposes of company law) you are responsible for the preparation of the accounts in accordance with the requirements of the Companies Act 2006 ('the 2006 Act').

Having satisfied myself that the accounts of the Company are not required to be audited under Part 16 of the 2006 Act and are eligible for independent examination, I report in respect of my examination of your charity's accounts as carried out under section 145 of the Charities Act 2011 ('the 2011 Act'). In carrying out my examination I have followed the Directions given by the Charity Commission under section 145(5) (b) of the 2011 Act.

Independent examiner's statement

Since your charity's gross income exceeded £250,000 your examiner must be a member of a listed body. I can confirm that I am qualified to undertake the examination because I am a registered member of ICAEW which is one of the listed bodies.

I have completed my examination. I confirm that no matters have come to my attention in connection with the examination giving me cause to believe:

1. accounting records were not kept in respect of the Company as required by section 386 of the 2006 Act; or
2. the accounts do not accord with those records; or
3. the accounts do not comply with the accounting requirements of section 396 of the 2006 Act other than any requirement that the accounts give a true and fair view which is not a matter considered as part of an independent examination; or
4. the accounts have not been prepared in accordance with the methods and principles of the Statement of Recommended Practice for accounting and reporting by charities (applicable to charities preparing their accounts in accordance with the Financial Reporting Standard applicable in the UK and Republic of Ireland (FRS 102)).

I have no concerns and have come across no other matters in connection with the examination to which attention should be drawn in this report in order to enable a proper understanding of the accounts to be reached.

David Holloway BA(hons) FCA DChA
ICAEW
Ribchesters
Finchale House
Belmont Business Park
Durham
DH1 1TW

Date: 4th October 2021

WADDINGTON STREET CENTRE LTD

**STATEMENT OF FINANCIAL ACTIVITIES
FOR THE YEAR ENDED 31 MARCH 2021**

	Notes	Unrestricted funds £	Restricted funds £	2021 Total funds £	2020 Total funds £
INCOME AND ENDOWMENTS FROM					
Donations and legacies	2	16,445	-	16,445	18,631
Charitable activities					
Waddington Street Resource Centre	4	115,221	42,831	158,052	221,302
Floating Support		7,813	-	7,813	7,556
Lanchester Road Hospital Discharge Service		4,307	-	4,307	4,011
Accomodation Support		150,334	-	150,334	151,161
Waddy Feel Good Service		-	19,800	19,800	19,800
Investment income	3	3,155	-	3,155	3,477
Total		<u>297,275</u>	<u>62,631</u>	<u>359,906</u>	<u>425,938</u>
EXPENDITURE ON					
Charitable activities					
Waddington Street Resource Centre		126,446	53,942	180,388	206,140
Floating Support		7,438	-	7,438	6,988
Lanchester Road Hospital Discharge Service		4,307	-	4,307	6,453
Accomodation Support		134,545	-	134,545	128,654
Waddy Feel Good Service		-	14,238	14,238	18,806
Total		<u>272,736</u>	<u>68,180</u>	<u>340,916</u>	<u>367,041</u>
NET INCOME/(EXPENDITURE)		<u>24,539</u>	<u>(5,549)</u>	<u>18,990</u>	<u>58,897</u>
RECONCILIATION OF FUNDS					
Total funds brought forward		<u>328,543</u>	<u>271,140</u>	<u>599,683</u>	<u>540,786</u>
TOTAL FUNDS CARRIED FORWARD		<u><u>353,082</u></u>	<u><u>265,591</u></u>	<u><u>618,673</u></u>	<u><u>599,683</u></u>

The notes form part of these financial statements

WADDINGTON STREET CENTRE LTD (REGISTERED NUMBER: 02330506)

**BALANCE SHEET
31 MARCH 2021**

	Notes	Unrestricted funds £	Restricted funds £	2021 Total funds £	2020 Total funds £
FIXED ASSETS					
Tangible assets	9	11,155	218,660	229,815	245,907
CURRENT ASSETS					
Debtors	10	22,751	-	22,751	51,099
Cash at bank and in hand		330,624	46,931	377,555	312,205
		<u>353,375</u>	<u>46,931</u>	<u>400,306</u>	<u>363,304</u>
CREDITORS					
Amounts falling due within one year	11	(11,447)	-	(11,447)	(9,528)
NET CURRENT ASSETS		<u>341,928</u>	<u>46,931</u>	<u>388,859</u>	<u>353,776</u>
TOTAL ASSETS LESS CURRENT LIABILITIES		<u>353,083</u>	<u>265,591</u>	<u>618,674</u>	<u>599,683</u>
NET ASSETS		<u>353,083</u>	<u>265,591</u>	<u>618,674</u>	<u>599,683</u>
FUNDS					
Unrestricted funds	12			353,083	328,543
Restricted funds				265,591	271,140
TOTAL FUNDS				<u>618,674</u>	<u>599,683</u>

The charitable company is entitled to exemption from audit under Section 477 of the Companies Act 2006 for the year ended 31 March 2021.

The members have not required the company to obtain an audit of its financial statements for the year ended 31 March 2021 in accordance with Section 476 of the Companies Act 2006.

The trustees acknowledge their responsibilities for

- (a) ensuring that the charitable company keeps accounting records that comply with Sections 386 and 387 of the Companies Act 2006 and
- (b) preparing financial statements which give a true and fair view of the state of affairs of the charitable company as at the end of each financial year and of its surplus or deficit for each financial year in accordance with the requirements of Sections 394 and 395 and which otherwise comply with the requirements of the Companies Act 2006 relating to financial statements, so far as applicable to the charitable company.

These financial statements have been prepared in accordance with the provisions applicable to charitable companies subject to the small companies regime.

The financial statements were approved by the Board of Trustees and authorised for issue on 4th October 2021 and were signed on its behalf by:


.....
D Blazey - Trustee

The notes form part of these financial statements

WADDINGTON STREET CENTRE LTD

NOTES TO THE FINANCIAL STATEMENTS FOR THE YEAR ENDED 31 MARCH 2021

1. ACCOUNTING POLICIES

Basis of preparing the financial statements

The financial statements of the charitable company, which is a public benefit entity under FRS 102, have been prepared in accordance with the Charities SORP (FRS 102) 'Accounting and Reporting by Charities: Statement of Recommended Practice applicable to charities preparing their accounts in accordance with the Financial Reporting Standard applicable in the UK and Republic of Ireland (FRS 102) (effective 1 January 2019)', Financial Reporting Standard 102 'The Financial Reporting Standard applicable in the UK and Republic of Ireland' and the Companies Act 2006. The financial statements have been prepared under the historical cost convention.

Income

All income is recognised in the Statement of Financial Activities once the charity has entitlement to the funds, it is probable that the income will be received and the amount can be measured reliably.

Expenditure

Liabilities are recognised as expenditure as soon as there is a legal or constructive obligation committing the charity to that expenditure, it is probable that a transfer of economic benefits will be required in settlement and the amount of the obligation can be measured reliably. Expenditure is accounted for on an accruals basis and has been classified under headings that aggregate all cost related to the category. Where costs cannot be directly attributed to particular headings they have been allocated to activities on a basis consistent with the use of resources.

Allocation and apportionment of costs

All costs are allocated between the expenditure categories of the Statement of Financial Activities on a basis designed to reflect the use of the resource. Costs relating to a particular activity are allocated directly, others are apportioned on an appropriate basis.

Tangible fixed assets

Depreciation is provided at the following annual rates in order to write off each asset over its estimated useful life.

Freehold property	- 2% on cost
Improvements to property	- 25% on cost
Plant and machinery	- 20% on cost
Fixtures and fittings	- 35% on cost
Caravan & minibus	- 12.5% on cost
Computer equipment	- 33% on cost

Taxation

The charity is exempt from corporation tax on its charitable activities.

Fund accounting

Unrestricted funds can be used in accordance with the charitable objectives at the discretion of the trustees.

Restricted funds can only be used for particular restricted purposes within the objects of the charity. Restrictions arise when specified by the donor or when funds are raised for particular restricted purposes.

Further explanation of the nature and purpose of each fund is included in the notes to the financial statements.

Hire purchase and leasing commitments

Rentals paid under operating leases are charged to the Statement of Financial Activities on a straight line basis over the period of the lease.

WADDINGTON STREET CENTRE LTD

**NOTES TO THE FINANCIAL STATEMENTS - continued
FOR THE YEAR ENDED 31 MARCH 2021**

2. DONATIONS AND LEGACIES

	2021	2020
	£	£
Donations	16,445	18,631
	<u>16,445</u>	<u>18,631</u>

3. INVESTMENT INCOME

	2021	2020
	£	£
Deposit account interest	3,155	3,477
	<u>3,155</u>	<u>3,477</u>

4. INCOME FROM CHARITABLE ACTIVITIES

	Waddington Street Resource Centre £	Floating Support £	Lanchester Road Hospital Discharge Service £
Local authority funding	94,024	7,813	4,307
Other income	21,196	-	-
Grants	42,832	-	-
	<u>158,052</u>	<u>7,813</u>	<u>4,307</u>
		2021	2020
	Accommodation Support £	Waddy Feel Good Service £	Total activities £
Local authority funding	141,454	-	247,598
Other income	8,880	-	30,076
Grants	-	19,800	62,632
	<u>150,334</u>	<u>19,800</u>	<u>340,306</u>
			Total activities £
			<u>403,830</u>

Grants received, included in the above, are as follows:

	2021	2020
	£	£
Durham County Council - 2 Cree Projects	6,000	6,000
Durham County Council- Waddy Feel Good Service	19,800	19,800
CDCF NHS Improvement Fund - IT Champion	-	9,018
Durham Area Action Partnership - Peer Mentoring Project	-	6,205
Henry Smith's Charity - Y-ASC	-	1,440
Durham Area Action Partnership - Defibrillator	-	1,972
National Lottery Community Fund - Lift Repairs	-	5,903
County Durham Clinical Commissioning Group Support Worker	-	27,747
Durham County Council - Section 106 IT Grant	-	26,630
Investing in Children - National Lottery Community Fund - Y-ASC	10,299	10,299
Durham County Council - Infection control grant	9,750	-
NHS CCG Digital Worker Grant	15,685	-
Durham Area Action Partnership - COVID 19 Assistance fund.	1,098	-
	<u>62,632</u>	<u>115,014</u>

WADDINGTON STREET CENTRE LTD

**NOTES TO THE FINANCIAL STATEMENTS - continued
FOR THE YEAR ENDED 31 MARCH 2021**

5. NET INCOME/(EXPENDITURE)

Net income/(expenditure) is stated after charging/(crediting):

	2021	2020
	£	£
Depreciation - owned assets	16,092	16,129
Hire of plant and machinery	2,074	1,919
Deficit on disposal of fixed assets	-	148
	<u> </u>	<u> </u>

6. TRUSTEES' REMUNERATION AND BENEFITS

There were no trustees' remuneration or other benefits for the year ended 31 March 2021 nor for the year ended 31 March 2020.

Trustees' expenses

There were no trustees' expenses paid for the year ended 31 March 2021 nor for the year ended 31 March 2020.

7. STAFF COSTS

	2021	2020
	£	£
Wages and salaries	186,022	186,111
	<u> </u>	<u> </u>
	<u>186,022</u>	<u>186,111</u>

The average monthly number of employees during the year was as follows:

	2021	2020
Charitable activities	9	10
Office	1	1
Management	2	1
	<u> </u>	<u> </u>
	<u>12</u>	<u>12</u>

No employees received emoluments in excess of £60,000.

8. COMPARATIVES FOR THE STATEMENT OF FINANCIAL ACTIVITIES

	Unrestricted funds	Restricted funds	Total funds
	£	£	£
INCOME AND ENDOWMENTS FROM			
Donations and legacies	18,631	-	18,631
Charitable activities			
Waddington Street Resource Centre	160,339	60,963	221,302
Floating Support	7,556	-	7,556
Lanchester Road Hospital Discharge Service	4,011	-	4,011
Accommodation Support	151,161	-	151,161
Waddy Feel Good Service	-	19,800	19,800
Investment income	3,477	-	3,477
	<u> </u>	<u> </u>	<u> </u>
Total	<u>345,175</u>	<u>80,763</u>	<u>425,938</u>

WADDINGTON STREET CENTRE LTD

**NOTES TO THE FINANCIAL STATEMENTS - continued
FOR THE YEAR ENDED 31 MARCH 2021**

8. COMPARATIVES FOR THE STATEMENT OF FINANCIAL ACTIVITIES - continued

	Unrestricted funds £	Restricted funds £	Total funds £
EXPENDITURE ON			
Charitable activities			
Waddington Street Resource Centre	171,066	35,074	206,140
Floating Support	6,988	-	6,988
Lanchester Road Hospital Discharge Service	6,453	-	6,453
Accommodation Support	128,654	-	128,654
Waddy Feel Good Service	-	18,806	18,806
	<hr/>	<hr/>	<hr/>
Total	313,161	53,880	367,041
	<hr/>	<hr/>	<hr/>
NET INCOME	32,014	26,883	58,897
	<hr/>	<hr/>	<hr/>
RECONCILIATION OF FUNDS			
Total funds brought forward	296,529	244,257	540,786
	<hr/>	<hr/>	<hr/>
TOTAL FUNDS CARRIED FORWARD	<u>328,543</u>	<u>271,140</u>	<u>599,683</u>

9. TANGIBLE FIXED ASSETS

	Freehold property £	Improvements to property £	Plant and machinery £
COST			
At 1 April 2020 and 31 March 2021	434,402	31,862	52,974
	<hr/>	<hr/>	<hr/>
DEPRECIATION			
At 1 April 2020	203,132	31,862	49,513
Charge for year	8,688	-	1,747
	<hr/>	<hr/>	<hr/>
At 31 March 2021	211,820	31,862	51,260
	<hr/>	<hr/>	<hr/>
NET BOOK VALUE			
At 31 March 2021	222,582	-	1,714
	<hr/>	<hr/>	<hr/>
At 31 March 2020	<u>231,270</u>	<u>-</u>	<u>3,461</u>

WADDINGTON STREET CENTRE LTD

**NOTES TO THE FINANCIAL STATEMENTS - continued
FOR THE YEAR ENDED 31 MARCH 2021**

9. TANGIBLE FIXED ASSETS - continued

	Fixtures and fittings £	Caravan & minibus £	Computer equipment £	Totals £
COST				
At 1 April 2020 and 31 March 2021	35,866	29,444	17,444	601,992
DEPRECIATION				
At 1 April 2020	35,866	29,444	6,268	356,085
Charge for year	-	-	5,657	16,092
At 31 March 2021	35,866	29,444	11,925	372,177
NET BOOK VALUE				
At 31 March 2021	-	-	5,519	229,815
At 31 March 2020	-	-	11,176	245,907

10. DEBTORS: AMOUNTS FALLING DUE WITHIN ONE YEAR

	2021 £	2020 £
Trade debtors	-	29,805
Other debtors	6,167	4,733
Prepayments and accrued income	16,584	16,561
	<u>22,751</u>	<u>51,099</u>

11. CREDITORS: AMOUNTS FALLING DUE WITHIN ONE YEAR

	2021 £	2020 £
Trade creditors	5,677	4,746
Other creditors	60	633
Accruals and deferred income	5,710	4,149
	<u>11,447</u>	<u>9,528</u>

WADDINGTON STREET CENTRE LTD

**NOTES TO THE FINANCIAL STATEMENTS - continued
FOR THE YEAR ENDED 31 MARCH 2021**

12. MOVEMENT IN FUNDS

	At 1.4.20 £	Net movement in funds £	Transfers between funds £	At 31.3.21 £
Unrestricted funds				
Waddington Street Centre	181,312	8,375	(20,000)	169,687
St Margaret's House	70,115	(2,326)	-	67,789
Greatham	55,350	17,475	-	72,825
Floating Support	1,455	376	-	1,831
Sherburn Hill Flats	3,656	640	-	4,296
Durham Samaritans Society (Out of Hours)	16,655	-	-	16,655
Minibus Replacement Fund	-	-	20,000	20,000
	<u>328,543</u>	<u>24,540</u>	<u>-</u>	<u>353,083</u>
Restricted funds				
Waddington Street Centre	259,017	(23,221)	-	235,796
Cree Project	1,344	2,108	-	3,452
DAAP - Peer Mentoring	2,255	(2,255)	-	-
YP Evening Project	2,327	(1,452)	-	875
Waddy Feel Good Service	2,236	5,562	-	7,798
CDDF - IT Digital Champion	3,961	(3,961)	-	-
DCC COVID 19 infection control grant	-	2,990	-	2,990
NHS CCG Digital Worker Grant	-	14,680	-	14,680
	<u>271,140</u>	<u>(5,549)</u>	<u>-</u>	<u>265,591</u>
TOTAL FUNDS	<u><u>599,683</u></u>	<u><u>18,991</u></u>	<u><u>-</u></u>	<u><u>618,674</u></u>

WADDINGTON STREET CENTRE LTD

**NOTES TO THE FINANCIAL STATEMENTS - continued
FOR THE YEAR ENDED 31 MARCH 2021**

12. MOVEMENT IN FUNDS - continued

Net movement in funds, included in the above are as follows:

	Incoming resources £	Resources expended £	Movement in funds £
Unrestricted funds			
Waddington Street Centre	134,821	(126,446)	8,375
St Margaret's House	42,459	(44,785)	(2,326)
Greatham	46,746	(29,271)	17,475
Floating Support	7,814	(7,438)	376
Sherburn Hill Flats	61,128	(60,488)	640
Lanchester Road Hospital Discharge Service	4,307	(4,307)	-
	<u>297,275</u>	<u>(272,735)</u>	<u>24,540</u>
Restricted funds			
Waddington Street Centre	-	(23,221)	(23,221)
Cree Project	5,999	(3,891)	2,108
DAAP - Peer Mentoring	1,098	(3,353)	(2,255)
YP Evening Project	10,299	(11,751)	(1,452)
Waddy Feel Good Service	19,800	(14,238)	5,562
CDDF - IT Digital Champion	-	(3,961)	(3,961)
DCC COVID 19 infection control grant	9,750	(6,760)	2,990
NHS CCG Digital Worker Grant	15,685	(1,005)	14,680
	<u>62,631</u>	<u>(68,180)</u>	<u>(5,549)</u>
TOTAL FUNDS	<u><u>359,906</u></u>	<u><u>(340,915)</u></u>	<u><u>18,991</u></u>

WADDINGTON STREET CENTRE LTD

**NOTES TO THE FINANCIAL STATEMENTS - continued
FOR THE YEAR ENDED 31 MARCH 2021**

12. MOVEMENT IN FUNDS - continued

Comparatives for movement in funds

	At 1.4.19 £	Net movement in funds £	At 31.3.20 £
Unrestricted funds			
Waddington Street Centre	179,346	1,966	181,312
St Margaret's House	55,866	14,249	70,115
Greatham	39,595	15,755	55,350
Floating Support	887	568	1,455
Sherburn Hill Flats	-	3,656	3,656
Durham Samaritans Society (Out of Hours)	20,835	(4,180)	16,655
	<hr/>	<hr/>	<hr/>
	296,529	32,014	328,543
Restricted funds			
Waddington Street Centre	239,958	19,059	259,017
Cree Project	624	720	1,344
DAAP - Peer Mentoring	-	2,255	2,255
YP Evening Project	2,433	(106)	2,327
Waddy Feel Good Service	1,242	994	2,236
CDDF - IT Digital Champion	-	3,961	3,961
	<hr/>	<hr/>	<hr/>
	244,257	26,883	271,140
TOTAL FUNDS	<hr/> <hr/>	<hr/> <hr/>	<hr/> <hr/>
	540,786	58,897	599,683

WADDINGTON STREET CENTRE LTD

**NOTES TO THE FINANCIAL STATEMENTS - continued
FOR THE YEAR ENDED 31 MARCH 2021**

12. MOVEMENT IN FUNDS - continued

Comparative net movement in funds, included in the above are as follows:

	Incoming resources £	Resources expended £	Movement in funds £
Unrestricted funds			
Waddington Street Centre	182,447	(180,481)	1,966
St Margaret's House	49,761	(35,512)	14,249
Greatham	49,199	(33,444)	15,755
Floating Support	7,556	(6,988)	568
Sherburn Hill Flats	52,201	(48,545)	3,656
Lanchester Road Hospital Discharge Service			
	4,011	(4,011)	-
Durham Samaritans Society (Out of Hours)	-	(4,180)	(4,180)
	<u>345,175</u>	<u>(313,161)</u>	<u>32,014</u>
Restricted funds			
Waddington Street Centre	27,747	(8,688)	19,059
Cree Project	6,000	(5,280)	720
DAAP - Peer Mentoring	6,205	(3,950)	2,255
YP Evening Project	11,993	(12,099)	(106)
Waddy Feel Good Service	19,800	(18,806)	994
CDDF - IT Digital Champion	9,018	(5,057)	3,961
	<u>80,763</u>	<u>(53,880)</u>	<u>26,883</u>
TOTAL FUNDS	<u><u>425,938</u></u>	<u><u>(367,041)</u></u>	<u><u>58,897</u></u>

WADDINGTON STREET CENTRE LTD

**NOTES TO THE FINANCIAL STATEMENTS - continued
FOR THE YEAR ENDED 31 MARCH 2021**

12. MOVEMENT IN FUNDS - continued

A current year 12 months and prior year 12 months combined position is as follows:

	At 1.4.19 £	Net movement in funds £	Transfers between funds £	At 31.3.21 £
Unrestricted funds				
Waddington Street Centre	179,346	10,341	(20,000)	169,687
St Margaret's House	55,866	11,923	-	67,789
Greatham	39,595	33,230	-	72,825
Floating Support	887	944	-	1,831
Sherburn Hill Flats	-	4,296	-	4,296
Durham Samaritans Society (Out of Hours)	20,835	(4,180)	-	16,655
Minibus Replacement Fund	-	-	20,000	20,000
	<u>296,529</u>	<u>56,554</u>	-	<u>353,083</u>
Restricted funds				
Waddington Street Centre	239,958	(4,162)	-	235,796
Cree Project	624	2,828	-	3,452
YP Evening Project	2,433	(1,558)	-	875
Waddy Feel Good Service	1,242	6,556	-	7,798
DCC COVID 19 infection control grant	-	2,990	-	2,990
NHS CCG Digital Worker Grant	-	14,680	-	14,680
	<u>244,257</u>	<u>21,334</u>	-	<u>265,591</u>
TOTAL FUNDS	<u><u>540,786</u></u>	<u><u>77,888</u></u>	-	<u><u>618,674</u></u>

WADDINGTON STREET CENTRE LTD

**NOTES TO THE FINANCIAL STATEMENTS - continued
FOR THE YEAR ENDED 31 MARCH 2021**

12. MOVEMENT IN FUNDS - continued

A current year 12 months and prior year 12 months combined net movement in funds, included in the above are as follows:

	Incoming resources £	Resources expended £	Movement in funds £
Unrestricted funds			
Waddington Street Centre	317,268	(306,927)	10,341
St Margaret's House	92,220	(80,297)	11,923
Greatham	95,945	(62,715)	33,230
Floating Support	15,370	(14,426)	944
Sherburn Hill Flats	113,329	(109,033)	4,296
Lanchester Road Hospital Discharge Service			
	8,318	(8,318)	-
Durham Samaritans Society (Out of Hours)	-	(4,180)	(4,180)
	<hr/>	<hr/>	<hr/>
	642,450	(585,896)	56,554
Restricted funds			
Waddington Street Centre	27,747	(31,909)	(4,162)
Cree Project	11,999	(9,171)	2,828
DAAP - Peer Mentoring	7,303	(7,303)	-
YP Evening Project	22,292	(23,850)	(1,558)
Waddy Feel Good Service	39,600	(33,044)	6,556
CDDF - IT Digital Champion	9,018	(9,018)	-
DCC COVID 19 infection control grant	9,750	(6,760)	2,990
NHS CCG Digital Worker Grant	15,685	(1,005)	14,680
	<hr/>	<hr/>	<hr/>
	143,394	(122,060)	21,334
	<hr/>	<hr/>	<hr/>
TOTAL FUNDS	785,844	(707,956)	77,888
	<hr/> <hr/>	<hr/> <hr/>	<hr/> <hr/>

DCC Public Health Education Funding

Durham County Council provided grant funding for education activities at Waddington Street Centre.

Waddington Street Centre

Included in the Waddington Street Centre restricted funds are funds which have been specifically allocated for the upkeep of the Waddington Street Centre building.

St Margaret's House, Greatham & Floating Support

Funds in the above categories relate to funds received to improve and maintain housing services and floating support services.

Cree Project

Funds are received to help fund support groups and actives for males and females.

Saturdays Project

The Saturday Project fund is to be used to sustain out-of-hours services.

YP Evening Project

The YP Evening Project fund is used to support young adults by providing a support café and an art group.

Waddy Feel Good Service

WADDINGTON STREET CENTRE LTD

**NOTES TO THE FINANCIAL STATEMENTS - continued
FOR THE YEAR ENDED 31 MARCH 2021**

12. MOVEMENT IN FUNDS - continued

Grant received from Durham County Council to provide support to groups who have anxiety and depression and help those people to alleviate symptoms and prevent further deterioration by helping people to improve their physical health through a combination of diet and exercise.

Minibus Replacement Fund

During 20/21 the trustees have designated £20,000 to replace the minibus which will be for the benefit of the service user.

13. RELATED PARTY DISCLOSURES

There were no related party transactions for the year ended 31 March 2021.