



# FINANCIAL STATEMENTS

Blyth Star Enterprises Limited -  
A Company Limited by Guarantee

Company Registration Number [02152943](#)  
Registered Charity Number [519443](#)

**31st MARCH 2024**

Bell Tindle Williamson LLP  
Chartered Accountants and Statutory Auditor  
The Old Post Office  
63 Saville Street  
North Shields  
Tyne & Wear  
NE30 1AY





# CONTENTS

Report of the Trustees.....	1-36
Independent Auditors' Report to the Trustees.....	37-41
Statement of Financial Activities.....	42
Statement of Financial Position.....	43
Statement of Cashflows.....	44
Notes to the Financial Statements.....	45-58

*The following pages do not form part of the financial statements:*

Detailed Analysis of Income and Expenditure.....	59-64
--	-------

“

I absolutely love it here, you can just be you, with noone judging you.

Blyth Star Service User.

# REPORT OF THE TRUSTEES

The Trustees, who are also Directors for the purposes of company law, are pleased to present their annual Directors' Report together with the financial statements of the Charity for the year ending 31st March 2024, which are also prepared to meet the requirements for a Directors' Report and financial statements for Companies Act purposes.

The financial statements comply with the Charities Act 2011, the Companies Act 2006, the Memorandum and Articles of Association and the charities Statement of Recommended Practice (applicable to charities preparing their financial statements in accordance with the Financial Reporting Standard applicable in the UK and Republic of Ireland; FRS 102) (issued in October 2019).





# CHAIRMAN'S STATEMENT

I am pleased to present the Annual Report for Blyth Star Enterprises Limited for the financial year ending 31 March 2024.

This has been a year of both great challenge and remarkable achievement, as we continue to provide crucial adult social care day and living support services to individuals with complex mental health needs and learning disabilities.

Throughout the year, we have remained committed to our core mission of enabling people to live meaningful and fulfilling lives, no matter the barriers they face. Our services have become even more vital as the societal impacts of mental health and learning disabilities continue to rise, and demand for our support has increased accordingly.

The past year, a one of resilience and progress, has seen a challenging external environment, with ongoing strains on public sector funding, increasing demand for services, and the continued recovery from the lasting effects of the COVID-19 pandemic. Despite these pressures, our dedicated staff, volunteers, and supporters have ensured that we continued to deliver high quality services to the individuals who depend on us.

Our day services and living support services have provided thousands of hours of tailored, person-centred care. All of our services are delivered as individualised care packages where we focus on helping people achieve their goals and gain greater independence. We remain proud of the work we do to promote dignity, choice, and inclusion in all aspects of the lives of those we serve.

During this year we again saw organic growth within our services through natural expansion to meet need, establishing new partnerships and strengthening existing ones to widen access to our services. We have been able to support a larger number of individuals across different communities, creating pathways to social inclusion, skill development and enhanced well-being.

Our impact is best illustrated by the personal stories of those we support. This year, more individuals than ever have transitioned to independent or supported living arrangements, completed vocational training, and achieved greater social participation all thanks to the tireless work of our team and the resilience of those we are privileged to serve.

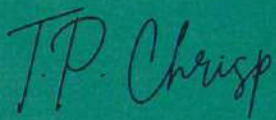
As we look to the future, we recognise the ongoing challenges posed by an evolving social care landscape. However, we also see opportunities. We are committed to innovating our service delivery model to ensure that we remain adaptable and responsive to the changing needs of the individuals and communities we support.

Our strategic priorities for the coming year include strengthening further our financial resilience through diversified income streams and prudent management, ensuring that we can continue to provide high quality services. This will also allow us to continue investing in our workforce, providing training and development to ensure our staff continue to lead with excellence, compassion and skill. As ever, we will work to enhance collaboration with the local authority, healthcare providers and community organisations to improve service integration and advocate for better social care policy.

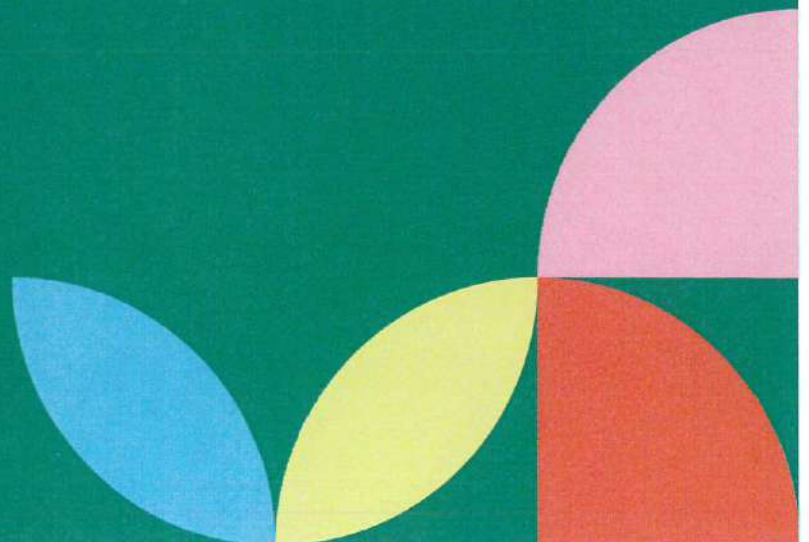
I would like to express my deep gratitude to our Trustees, whose unwavering commitment and guidance have been invaluable in navigating this year's challenges. I also extend my heartfelt thanks to our management team and staff, who work tirelessly every day to make a tangible difference in people's lives.

Finally, I would like to thank our funders, partners, and supporters. Your generosity and belief in our mission enable us to continue our vital work. Together, we will continue to champion the rights and wellbeing of individuals with mental ill health and learning disabilities.

We look to the future with hope, optimism, and a renewed sense of purpose. I am confident that with your continued support, we will build on our successes and continue to make a lasting impact in the years ahead.

A handwritten signature in black ink that reads "T.P. Crisp". The signature is written in a cursive, slightly slanted style.

Tim P. Crisp JP  
Executive Chairman





# CHIEF EXECUTIVE STATEMENT

Looking back at 2023/24, I feel extremely proud at what we have achieved and I am filled with appreciation towards our dedicated workforce who are the ones who have helped to make it all happen.

The past year has seen substantial organic growth across all of our departments and as a result, we have been able to create a number of new jobs for local people to help us meet the ever-increasing need for specialist mental health support in Northumberland. By growing our organisation in line with demand, we are enabling more adults than ever before who live with complex mental health needs and learning disabilities to stay safe and well and remain as independent as possible, while also ensuring the stability of Blyth Star as an employer.

Our team continues to work closely with our partner agencies in order to provide a cohesive and consistent quality of support, which in turn enables us to provide the right support at the right time to the right people - capitalising on people's choices and supporting them to live fulfilling, healthy and engaged lives within their communities.

As an Organisation, we have always strived to remain true to our purpose and our core values – Somewhere to Live, Somewhere to Work and Someone to Care – continue to give purpose and direction to everything we do.

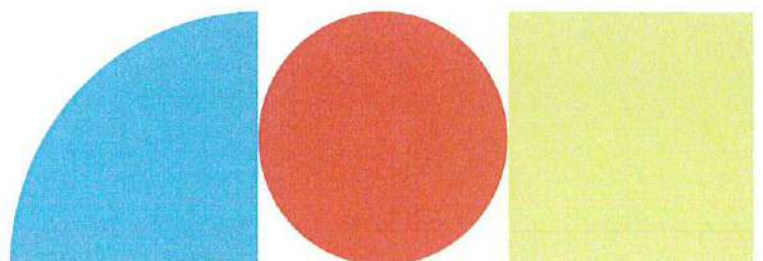
Through commentary and review, our beneficiaries and stakeholders advise us that the support Blyth Star Enterprises provides to vulnerable adults is essential to their health and wellbeing, community presence and sense of belonging. Whilst this kind of positive feedback is great to receive and serves as an affirmation that Blyth Star is indeed serving its intended purpose, it does provide added pressure to ensure the charity's continued success against the backdrop of an ever-evolving social care landscape.

With the future set firmly in our sights, we have taken huge steps in 2023/24 to make improvements to our services in a number of core areas, as well as further develop our infrastructure to help streamline our operations and sure-up Blyth Star's success into 2024/25 and beyond. Together with the expansion of our Outreach Services in both the north and south of the county, and the development and roll out of a series of bespoke training programmes endorsed by the awarding organisation, NOCN, we have seen innovation in our Day Services which offer services to the general public which have resulted in commercial successes – further strengthening our financial position and helping to provide new and exciting activities for our service users to engage with.

Finally, I would like to take this opportunity to say thank you to all of Blyth Star Enterprises employees, partners and Trustees for their continued support. It is this support and dedication which enables us to effectively deliver our key objectives and maintain our values year after year whilst supporting the people at the heart of our Charity and for this, we are incredibly grateful.

J. DIXON

Julie Dixon  
Chief Executive Officer



# OUR PURPOSES AND ACTIVITIES

The Charity's purposes are set out in the objects contained in the company's Memorandum of Association.

## ABOUT US

Blyth Star Enterprises works alongside people aged 18 and upwards with mental ill health and or learning and other disabilities to enable them to have meaningful and independent lives within their local communities.

We support people to develop and take control of their own lives using a person-centred approach focused on rehabilitation and recovery. Our services include:

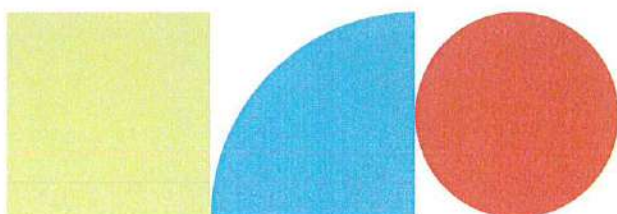
- ☀ Living Support
- ☀ Day Services
- ☀ Life Coaching
- ☀ Community Residential Rehabilitation
- ☀ Training and Employment Training
- ☀ Social and Leisure Activities

## OUR VISION

People with individual needs living the life they choose.

The organisation is based upon three fundamental principles:

Somewhere to **Live**, Somewhere to **Work**, Someone to **Care**.



## WHERE WE WORK

We are a local organisation operating primarily in the South East of Northumberland, which contains some of the most deprived areas in all of Northumberland. We are also increasingly delivering services in the North and West of the county as the demand for our services grows.

Working in partnership with people we support, their families or carers and our commissioners, being person-centred and focussing on what is important for every person is our passion. We pride ourselves on our ability to have a positive impact on people's lives. We recruit, train and support our staff to help people to maximise their independence and to have choice and control over their lives.

## OUR MISSION

**For people with mental ill health;**

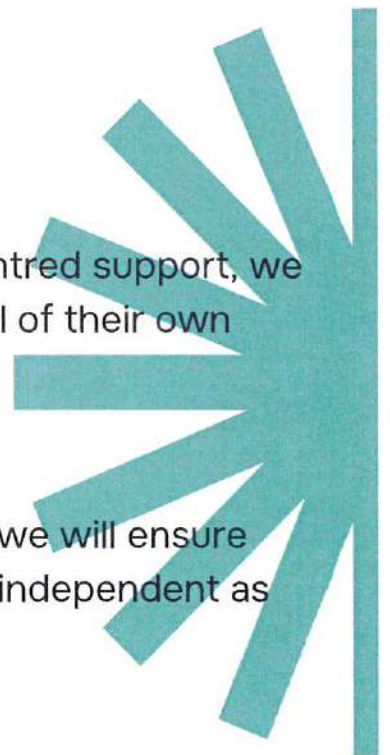
Through recovery focused, age appropriate and person centred support, we encourage people with mental ill health to take back control of their own lives as much as they can.

**For people with learning and other disabilities;**

By delivering a range of flexible care and support services, we will ensure that people living with learning and other disabilities are as independent as possible and connected with their local communities.

## OUR VALUES

- Treat people with dignity and respect
- Give people power to make choices
- Support people to be involved with their communities
- Take responsibility for our actions and act fairly
- Be honest, open and accountable
- Listen to ensure we deliver agreed plans and outcomes
- Encourage skill and expertise throughout the organisation
- Welcome and support innovation and new ideas to maximise our impact
- Promote leadership and learning



# OBJECTIVES AND ACTIVITIES

## POLICIES AND OBJECTIVES

In setting objectives and planning for activities, the Trustees have given due consideration to general guidance published by the Charity Commission relating to public benefit.

## SUMMARY OF OBJECTS AS SET OUT IN THE GOVERNING DOCUMENT

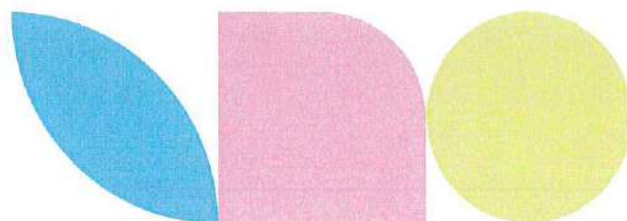
The charitable objects are:

- To work with people who experience mental ill health and or learning and other disabilities, to enable them to live and work independently within their own local community and to support them towards achieving a quality of life.
- The provision of community residential rehabilitation, living support, day services, training and employment training services.

## STRATEGIES FOR ACHIEVING OBJECTIVES

In order to achieve the objectives, the Charity provides community residential rehabilitation, living support, day services, training and employment training services, advice and support for people with mental ill health and or learning and other disabilities and their families and carers in Northumberland and other neighbouring Local Authority areas.

Blyth Star Enterprises Limited is very involved in the local community and as such, is indebted to a number of local businesses for their support and volunteers who provide their services without financial reward.





# ACHIEVEMENTS AND PERFORMANCE

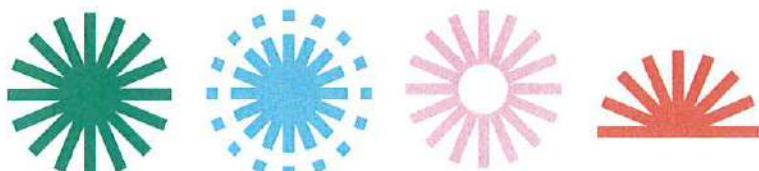
## GOING CONCERN

After making appropriate enquiries, the Trustees have a reasonable expectation that the charitable company has adequate resources to continue in operational existence for the foreseeable future. For this reason, they will continue to adopt the going concern basis in preparing the financial statements. Further details regarding the adoption of the going concern basis can be found in the Accounting Policies.

## REVIEW OF ACTIVITIES - OVERVIEW

Blyth Star Enterprises Limited has continued to maintain its primarily organic service growth and innovative modernisation across all areas of the organisation. Our actual impact remains focused on our Organisations' principles of Somewhere to Live, Somewhere to Work and Someone to Care.

The Organisations' services are delivered across two key areas: Living Support Services and Day Services.





## LIVING SUPPORT SERVICES

The 2023-2024 financial year has been very successful for Blyth Star's Living Support Services.

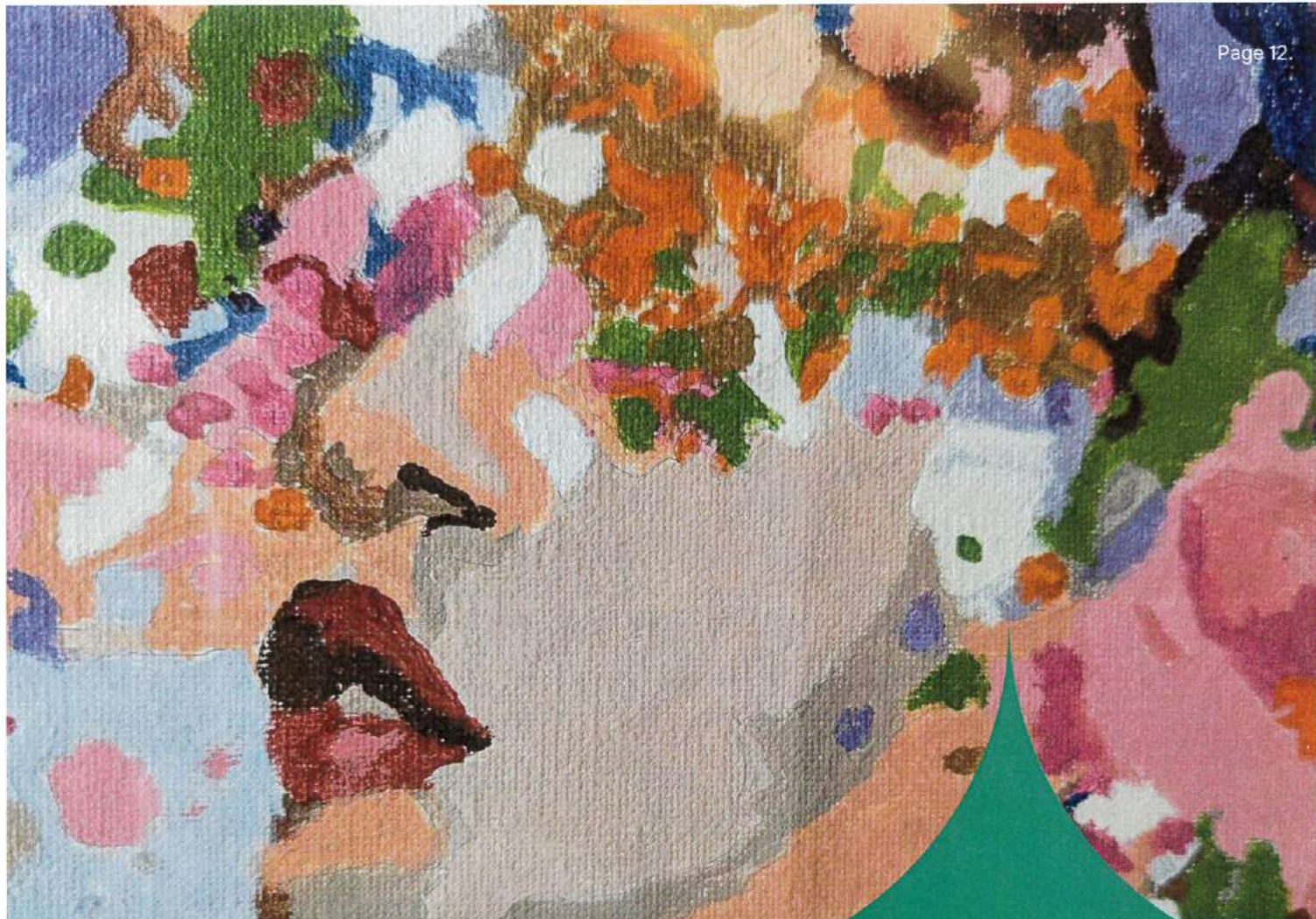
All of our independent supported living accommodation within our apartment buildings - Custom House and Bradbury's Old Chandlery, have remained occupied throughout the period; one service user even successfully moved into his own property in the community with support from Blyth Star's outreach service, but we already had a new service user commissioned and ready to move in once the flat had been refurbished.

The two bungalows that Blyth Star own and operate as part of our outreach service both have tenants who are very content and we have been exploring the possibility of acquiring more properties in the community.

Referrals to outreach remain healthy with new service users on a waiting list and care managers regularly requesting increased support for existing service users within the community. We have been able to create new jobs for both full-time and bank staff in order to keep up with the increased demand for our services which will help us to support more individuals moving forward.

One of the big capital projects that we had hoped to complete within the period was an extension to the ground floor communal area of Custom House to create a larger shared lounge space and kitchen for residents. Unfortunately, due to delays in contractors getting started with the works, this is now due for completion later in the year.





## DAY SERVICES (OVERVIEW)

While we seek to develop the potential of all individuals who attend Blyth Star's services, it is important to understand individuals' limitations too. Many of the service users that we work with are, for the most part, not able to enter competitive employment market due to the nature of their disabilities, which is why we provide sheltered work environments and seek to make these as real and as empowering as possible.

We currently have approximately 140 people using these services, of which two thirds are under the age of 40 and many of whom may require our support for the foreseeable future. This long term service therefore needs to remain relevant, interesting, challenging and sustainable.





## THE STEAMBOAT

Building on the success of the past year, where we saw exponential growth in demand for our services, the 2023-24 financial period has been another remarkable year at The Steamboat. Our referrals are increasing organically month on month and we now support 55 service users, ranging in age from 21 to 80.

With growth in demand, we have had to increase our staff headcount, taking on two additional bank staff with different skill sets to support our full and part-time members of staff. We also have two service users who, during the period, have completed their Level 1 and 2 certificates in Food Hygiene so they can support staff and fellow service users in the kitchen.



## LIVING SKILLS

While we have always offered elements of Living Skills support and training at The Steamboat, over the past year, we have taken steps towards formalising this into a modular framework of training, similar to the programmes we have in place at The Woodfuel Centre and Stakeford Nurseries.

The programme we have developed will take one year for service users to complete and contains five separate units, designed to cover all aspects of essential living – basic health and safety, healthy eating and lifestyle, time telling, basic IT and cybersecurity and culminating in a reflective, self-led art project.

The course material has been submitted to the awarding organisation, NOCN, for external endorsement and we will begin delivering the programme once this has been received. In the meantime, we have started a healthy eating regime and service users can get weighed weekly and given advice around diet and nutrition.



## DAY TRIPS

Our service users do like to get out and about and to explore new places. When the weather is nice, we go out and have walks locally to the park and the beach, but to make it easier for The Steamboat to plan trips further afield, Carol Boyd, Manager at The Steamboat learned how to drive Blyth Star's minibus in the spring. This has enabled service users to enjoy educational trips around Northumberland and to Beamish Open Air Museum.

## ARTS AND CRAFTS

Arts and crafts are very important to our service users who attend The Steamboat. From knitting to crochet and watercolour painting to textiles, many of our service users are highly creative and find the time that they spend engaging in arts and crafts very important to their sense of wellbeing. During this financial period, we started working on a big group project to create a fidget blanket – a kind of sensory aid which is used to support people with dementia. Each service user created their own sensory 'square' and the squares were then sewn together to make the blanket. The service users enjoyed this project so much, they have gone on to make two more and we intend to donate these to a local care home in due course.

Another creative project the service users at The Steamboat enjoyed engaging with was in the run up to Easter. The Woodwork Department made a series of wooden rabbit-shaped boxes which our service users thoroughly enjoyed painting and making pom pom tails for. The finished boxes were then sold at Morpeth market.





# STAKEFORD NURSERIES

The past year, from April 2023 to March 2024, has been a year of growth and development for the Stakeford Nurseries team. Our gardening and nursery services saw an expansion in both projects and customers, while internal training and team development continued to enhance our workforce capabilities. Notable achievements include the successful expansion of retail capabilities and community involvement through various events and outreach programmes.



Our nursery products remained in high demand throughout the year. In June, the EPBC planters were distributed, and community planters were refreshed and planted up, enhancing the local environment and supporting community engagement.

The organics department continues to work in line with our sustainability goals, having successfully renewed our Soil Association registration in August 2023. This renewal demonstrates our commitment to organic principles and environmentally responsible practices.

From a staff perspective, Graham Carr, Horticultural Services Manager at Stakeford Nurseries embarked on a professional development journey by starting the Level 4 Lead Practitioner in Adult Care course in April 2023 in a bid to provide a higher level of frontline support to our service users.





### GARDENING TEAM PERFORMANCE

The gardening team began the year with a near-full diary of customers, and any remaining gaps were promptly filled by new clients throughout the year. This consistency in demand is a testament to the excellent service our team provides. A notable achievement for the team was the renewal of our contract with the Port of Blyth, securing an important partnership that will continue to bolster our service portfolio.

Additionally, our Garden Maintenance Supervisor successfully completed his HGV training, which enables him to drive the MAN gardening van, increasing our operational flexibility. The gardening team also completed a private landscaping job for a local client in October. This job represents a significant milestone in our private project portfolio and paves the way for future high-quality landscaping work.

In December, the team launched a new venture into selling Christmas trees. This first-time offering was highly successful, adding a new stream of revenue for the business, with wreaths also remaining a popular seasonal product.



## FACILITIES AND INFRASTRUCTURE

Throughout the year, we invested in maintaining and expanding our facilities to meet growing demand. In response to damage caused by high winds, we had to make repairs to an existing polytunnel by replacing the roof skin.

Additionally, a new retail tunnel was erected, and further retail areas were expanded, enhancing our capacity to serve our growing customer base.

## EVENTS AND COMMUNITY ENGAGEMENT

Our commitment to community outreach was evident through our participation in multiple events during the year. In June 2023, we attended the "Future Choices" event at Kirkley Hall, in collaboration with The Woodfuel Centre and The Steamboat day services, to promote our offer to students with special educational needs and disabilities (SEND), including those with Educational Health Care Plans (EHCPs). The event provided an excellent platform to raise awareness about the opportunities we offer and to connect with potential future clients and their families. A similar event, "G-Fest," was held in August at Saint George's Park, furthering our outreach efforts to the SEND community.

In September, we hosted a successful barbeque on-site for all of our service users, fostering a sense of community and strengthening relationships with those we serve. Additionally, our annual Christmas meal was once again a huge success, bringing festive joy to everyone involved.





## TEAM DEVELOPMENT

Our team saw some exciting developments throughout this financial year. We recruited a full-time Support Worker on October 2nd, strengthening our workforce and adding fresh energy to our support team. Another key member of our staff completed their Level 3 Health and Social Care qualification, demonstrating their dedication to personal growth and to improving the care we provide to service users.

These achievements in staff development are a crucial part of our strategy to ensure that we continue to provide the highest quality services to the individuals that we support.

## KEY PROJECTS AND INITIATIVES

The start of 2024 saw an exciting development with the submission and discussion of our “Barren Land” proposal with Julie Dixon, Blyth Star’s Chief Executive Officer. This proposal outlines the vision for transforming unused land into a productive and sustainable area which will lay the foundation for future growth in both service user engagement and educational initiatives.

## LOOKING FORWARD

In February and March, our focus shifted toward preparing for the busy planting season. Seed sowings and plug plant deliveries were in full swing as we prepared for the spring season ahead.

Looking to the future, we are excited about the opportunities that lie ahead in terms of expanding our services, continuing to build strong community relationships, and enhancing our internal capabilities to better serve our service users and customers.



## THE WOODFUEL CENTRE

2023-24 has seen another busy year at The Woodfuel Centre. Our staff and service users have been busy producing lots of logs and kindling to supply to our customers over the winter months. We have seen some new faces attend both The Woodfuel Centre and our co-located Woodwork Department, with additional referrals boosting our attendance numbers.



### COMMERCIAL SUCCESSES

On top of our regular kindling supply to Pearsons of Dunns (a major supplier across Scotland) we now also make regular deliveries to two local restaurants, Porkys BBQ and Davanti Italia, who are using our air dried logs to fire their pizza ovens. The service users love being a part of the restaurant deliveries and often come away with a pizza or two!



Our Woodwork Department has also been kept busy, creating some amazing wooden play equipment for a local primary school including mud kitchens, reading dens, a role play shop front, water play balance beam, climbing frame tipis and even a full-scale wooden car!





At the beginning of the year, service users in the Woodwork Department were busy making wooden tortoise planters to sell in the retail unit at Stakeford Nurseries. The tortoises flew off the shelves and were so sought after, the department ended up making around 35 of them.

## GARDEN DEVELOPMENT

During the summer months, our service users were kept busy with some gardening activities, developing their skills while helping to transform the area of barren land at the back of the factory unit into a client garden. They involved themselves in grass cutting, garden tidy ups, flower bed planting and vegetable growing. We also took on a maintenance contract with a local primary school to cut the grass on their playing field. This has given service users an opportunity to further enhance their skills and practice using more industrial-scale gardening equipment.



## OUT AND ABOUT

We always like to have some down-time too, so we visited Seahouses for a day trip and enjoyed some wonderful fish and chips.

We also had a day out at the beach where we walked from St Mary's lighthouse all the way to Whitley Bay.

## WOODFUEL AND WOODWORK TRAINING

Throughout the period, service users have been continuing to work their way through our in-house programme of Woodfuel and Woodwork training, which is externally endorsed by the awarding organisation, NOCN.

The programme is tailored to fit in with the activities the service users do within the factory. They really enjoy this training as it is evidence of what they can achieve.





# TRAINING

We have seen some fantastic progress made by both staff and service users with various training courses and opportunities this financial year.

## STAFF SUCCESSES

3

Staff completed their Care Certificate

3

Staff completed their L3 Adult Care Worker Qualification

6

Staff completed their L2 Food Hygiene Qualification

1

Person completed their L1 Food Hygiene Qualification

1

Person completed their Working at Height Qualification

2

Staff completed their Manual Handling training

5

Staff completed their Fire Marshal training

Staff also continue to make progress with their mandatory training.



## SERVICE USER SUCCESSES

3

Service users completed their L2 Food Hygiene Qualification

2

Service users completed their L1 Food Hygiene Qualification

## NOCN ENDORSED PROGRAMMES

Our in-house training programmes endorsed by the awarding organisation, NOCN, continue to run very successfully across our day services.

During the period, we had 60 service users registered to take part in the various programmes:

19

at The Woodfuel Centre

14

in the Woodwork Department

27

at Stakeford Nurseries





# FINANCIAL REVIEW

## PRINCIPAL FUNDING SOURCES

The principal funding sources of the Charity are the provision of a community residential rehabilitation and recovery service, living support outreach services, independent supported living services, day services, training and employment training services. These services represent 94.44% (2023: 81.83%) of the Charity's total income which is an increase on the previous year due to the receipt of a significant Deed of Gift in that year.

## EXPENDITURE

Expenditure has increased compared to the previous year primarily due to the organic growth in service delivery, the effect of Living Wage pay awards made to employees and the impact the enduring cost of living crisis is having on all businesses.

## STATEMENT OF FINANCIAL POSITION

Our statement of financial position continues to grow stronger with total reserves of £2,531,674 (2023: £2,390,089) primarily unrestricted in nature.

We invested £7,470 in capital assets during the year (2023: £153,630), mainly in our freehold property and our plant and equipment. We will continue the policy of investing where necessary to modernise, remain safe and where possible, provide improved care at optimum cost.

Net current assets at the year-end were £818,915 (2023: £621,991) with the increase being attributable to the surplus achieved this year, coupled in particular, with timing effects of receipt of debtors.

## FINANCIAL AND RISK MANAGEMENT OBJECTIVES AND POLICIES

As a registered Charity, the financial objectives of Blyth Star Enterprises Limited are:

- To be financially stable at all times and to maintain sufficient reserves to achieve this.
- To be managed professionally and prudently in line with policies agreed by the Board of Trustees.
- To generate operating surpluses and to re-invest these towards the achievement of our charitable objectives.
- To control expenditure and operate efficiently.
- To monitor, control and minimise all financial and other risks.

### Financial Risk Management Policy

Internal financial controls are regularly reviewed in line with guidelines set by the Charity Commission. This is the responsibility of senior management and the Board of Trustees. The charity manages its cash resources, including sufficient working capital, so that operating needs are met without the need for regular short term borrowing, any surplus cash is invested so as to maximise interest income.

The charitable company is exposed to price risk in terms of statutory funding levels but is content that these are in line with those in the sector and budget accordingly. Credit risk is managed through regular contact with funders, liquidity and cash flow risks are managed through appropriate and carefully managed use of financial instruments with our principal bankers.

### Investment Powers and Policy

Under the Memorandum and Articles of Association the Charity has the power to invest in any way the Trustees wish.

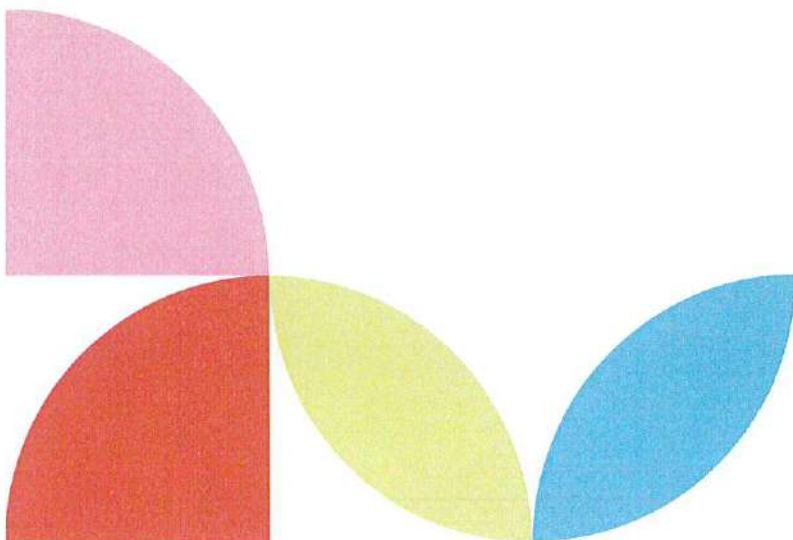
### Reserves Policy and Going Concern

The Board of Trustees of the Charity have a strategy of continuing wherever possible to build reserves through planned operating surpluses. They are aware that a prudent approach, particularly in the current climate of financial and economic uncertainty, must be maintained to ensure that sufficient reserves are available to provide resources and flexibility to achieve future plans.

Should the Charity generate financial surpluses, the current reserves policy allows for up to six months running costs to be kept as an uncommitted reserve. Any funds remaining should be committed to works and services which meet the aims of the Charity, although once committed, these do not have to be spent within one financial year but become restricted funds.

At 31st March 2024 unrestricted reserves were £2,284,897 (2023: £2,116,139) and six months running costs amounted to £1,119,819 (2023: £950,680) the Trustees are therefore pleased to report that unrestricted reserves exceed the minimum target by £1,165,078 (2023: £1,165,459).

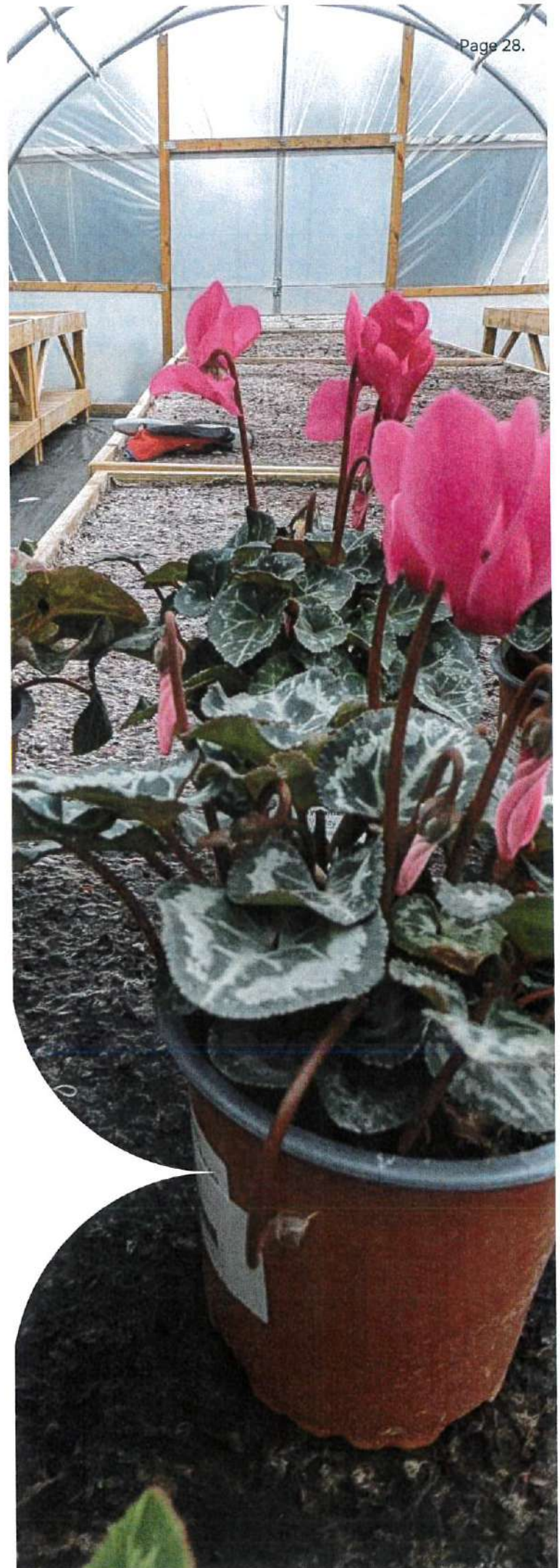
Whilst this is reassuring, ongoing and increasing uncertainty in our areas of activity suggest we continue with our prudent approach in respect of our reserve levels and on that basis, the Trustees have implemented their plan for unrestricted surpluses in this and future years to be extended to six months operating cost. The growth in reserves will be achieved through continued income generation, establishment of unrestricted income streams and sound financial management but we are mindful that we still need to invest in our current projects or any future project that arises which will be of benefit to the Charity.



## PLANS FOR FUTURE PERIODS

The Trustees and senior management team have set out a growth strategy for Blyth Star Enterprises Limited focused on the expansion and modernisation of our services. This expansion and modernisation will generate year on year surpluses that we can re-invest in our staff to improve our service delivery and provide even better support to people with mental ill health and or learning and other disabilities, their families and carers.

The Trustees are committed to continuing to invest in our Organisation through the use of our reserves and grant funding, rather than cut back on the services that we provide and the resultant impact that we can achieve for our beneficiaries.



# REFERENCE AND ADMINISTRATIVE DETAILS

<b>CHARITY NAME:</b>	Blyth Star Enterprises Limited
<b>CHARITY REGISTRATION NUMBER:</b>	519443
<b>COMPANY REGISTRATION NUMBER:</b>	02152943
<b>REGISTERED OFFICE AND OPERATIONAL ADDRESS:</b>	The Old Chandlery 30 Ridley Street Blyth Northumberland NE24 3AG
<b>BANKERS:</b>	Barclays Bank PLC 50-51 Northumbria House Manor Walks Shopping Centre Cramlington Northumberland NE23 6QP
<b>SENIOR STATUTORY AUDITOR:</b>	Emma Hartshorne-Ferguson BA FCA Bell Tindle Williamson LLP The Old Post Office 63 Saville Street North Shields Tyne and Wear NE30 1AY
<b>SOLICITORS:</b>	Carr & Co Arms Everytyne House Quay Road Blyth Northumberland NE24 2AS

# DIRECTORS AND TRUSTEES

The directors of the charitable company (the Charity) are its Trustees for the purposes of Charity law. The key management personnel who served during the year and since the year end were as follows:

## BLYTH STAR ENTERPRISES LIMITED: TRUSTEES AND DIRECTORS

Elected Trustees:

T.P. Chrisp JP (Chairman)  
S.W. Gibson (Company Secretary)  
Mrs S.M. Herron  
Mrs. L. Twedde

## BLYTH STAR ENTERPRISES LIMITED: MANAGEMENT

Chief Executive Officer:

Ms J. Dixon

Consultant:

G. Moore MBE



# STRUCTURE, GOVERNANCE AND MANAGEMENT

## NATURE OF GOVERNING DOCUMENT AND HOW THE CHARITY IS CONSTITUTED

Blyth Star Enterprises Limited was incorporated in the UK as a company limited by guarantee on 6th August 1987 and as a charity on 30th October 1987. The Company was established under a Memorandum of Association which states the objects and powers of the company and is governed under its Articles of Association dated 18th June 1987 (updated 25th September 2015).

In the event of the Company being wound up, the members are required to contribute an amount not exceeding £10.

The charitable company is managed by Trustees with expertise relevant to the management of the company. The Trustees meet quarterly to monitor performance, agree resource allocation, identify and agree solutions to problems and respond to any opportunities that arise. The Chief Executive Officer meets regularly with the Chairman of the Board of Trustees to discuss performance.

## APPOINTMENT OF TRUSTEES

The Directors of the Company are also Charity Trustees for the purpose of Charity law. Should Blyth Star Enterprises Limited wish to recruit a new Trustee there are formal procedures in place to ensure a good candidate is selected. There is no specific age group or experience required to be a Trustee, however Trustees must not have unspent convictions for offences involving deception or dishonesty and be willing and able to demonstrate that they can add to range of skills and experience present in the existing Trustees. They should also be able to demonstrate their commitment to actively participate in the governance and development of the company outside of Board meetings.

The Board of Directors will strive to recruit new Trustees from within the area of influence of the Charity, from wider professional spheres, i.e. local business community and people with experience of providing, organising or administering employer training.

In addition it will actively seek to recruit people with experience of mental ill health and learning disabilities, their families or carers.

Under the requirements of the Articles of Association, members of the Board are normally elected at the Annual General Meeting (AGM), with one third of the Board resigning at each AGM; this number being made up of those who have been appointed to the Board longest since their last appointment.

## TRUSTEE INDUCTION AND TRAINING

There is a formal induction process for all new Trustees. This includes an orientation by the Chairman and Chief Executive Officer and the provision of an information pack which explains their legal obligations under Charity and company law. The pack also contains the Charity Commission publication “The Essential Trustee” and specific guidance on public benefit and conflicts of interest and informs them of the content of the Memorandum and Articles of Association, the committee and decision-making processes, the current business plan and recent financial performance of the Charity. During the induction they meet key employees and other Trustees. Trustees are encouraged to attend appropriate external training events where these will facilitate the undertaking of their role.

## ORGANISATIONAL STRUCTURE AND HOW DECISIONS ARE MADE

The Charity has no fixed maximum of Trustees. Currently there are four Trustees who meet as a Board to discuss and decide the policies and strategy of the Charity. There is a plan to increase the number of Trustees to a minimum of 8 in the near future. Individual Trustees participate in other meetings in between Board meetings specific to their areas of interest.

The Trustees have the ultimate responsibility for establishing the strategic direction and corporate objectives of the Charity with the day-to-day running of the Charity being the responsibility of the Chairman, the Chief Executive Officer and the Day Services Operations Manager.

Committees of Trustees are formed as and when required to cover Audit and Finance, Care Quality, Health and Safety and Risk. The Chief Executive Officer is assisted by the Day Services Operations Manager and a variety of service level agreements for essential support services.

## RELATED-PARTIES AND CO-OPERATION WITH OTHER ORGANISATIONS

Blyth Star Enterprises Limited is a specialist provider of care for people with mental ill health and or learning and other disabilities. Services are commissioned by Adult Social Services departments within local councils in the North East of England primarily but not exclusively Northumberland. The Charity enjoys good relationships with a variety of other local and national partners and statutory bodies.

## PAY POLICY FOR KEY MANAGEMENT PERSONNEL

The pay of Key Management Personnel is reviewed annually and normally increased in accordance with average earnings. The Trustees benchmark against average pay levels of other charities and similar organisations within the sector and in the region. Pay levels are set using this information together with budget and forecast information, ensuring that the Charity can afford and proposed increase. The Trustees then agree any uplift to remuneration.

## PRINCIPAL RISKS AND UNCERTAINTIES

Blyth Star Enterprises Limited operates within a highly regulated environment, with the majority of its income derived from the provision of services commissioned by a small number of public funders. As such, the principal risks and uncertainties for Blyth Star Enterprises Limited are:

- Financial constraints placed on all care providers by public sector commissioners, as they in turn face financial cutbacks. This is a challenge faced throughout the care sector and is by no means unique to Blyth Star Enterprises Limited.
- Changes in legislation affecting charities and the care sector, including additional compliance requirements.
- Failure to meet the requirements of our various regulators resulting in the inability to provide services.
- Changes in legislation affecting businesses in general, such as pension auto-enrolment and changes to the National Living Wage. These lead to increases in our operating costs and again are not unique to Blyth Star Enterprises Limited.

## RISK MANAGEMENT

The Trustees understand the importance of assessing major risks to which the Charity is exposed. There are appropriate systems, controls and procedures in place to minimise and mitigate any principal risks and uncertainties.

The following major risks to which Blyth Star Enterprises Limited is exposed are regularly reviewed:

- Financial (fraud, insufficient income, exceptional costs)
- Governance (recruitment or loss of Trustees and management)
- External/political (Government policy changes, Local Authority changes)
- Quality and reputation (compliance failure, breach of law or regulations, serious incident, adverse publicity)
- Service delivery (recruitment or loss of staff, loss of contracts)
- Growth risks (failure to achieve long term objectives, availability of investment)

Blyth Star Enterprises Limited has reviewed its organisational risk management and assessment policies and procedures and uses the services of specialist Health and Safety/Risk Management advisors to help oversee this area of work, supported by the Senior Management team and Trustees.

## TRUSTEES RESPONSIBILITIES IN RELATION TO THE FINANCIAL STATEMENTS

The Charity Trustees (who are also Company Directors for the purposes of company law) are responsible for preparing a Trustees' annual report and financial statements in accordance with applicable law and United Kingdom Accounting Standards (United Kingdom Generally Accepted Accounting Practice).

Company law requires the Charity Trustees to prepare financial statements for each year which give a true and fair view of the state of affairs of the charitable company and of the incoming resources and application of resources, including the income and expenditure for that period.

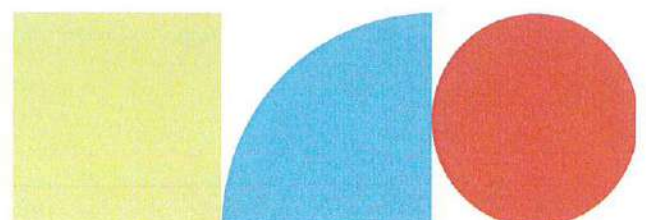
In preparing those financial statements, the Trustees are required to:

- Select suitable accounting policies and apply them consistently;
- Observe the methods and principles in the Charities SORP;
- Make sound judgments that are reasonable and prudent;
- State whether applicable UK Accounting Standards have been followed, subject to any material departures disclosed and explained in the financial statements, and;
- Prepare the financial statements on the going concern basis unless it is inappropriate to presume the charitable company will continue in business.

The Trustees have overall responsibility for ensuring that the charitable company has appropriate systems and controls, financial and otherwise. The Trustees are also responsible for keeping proper accounting records which disclose with reasonable accuracy at any time the financial position of the charitable company and enable them to ensure that the financial statements comply with the Companies Act 2006. The Trustees are also responsible for safeguarding the assets of the charitable company and hence for taking reasonable steps for the prevention and detection of fraud and other irregularities and to provide reasonable assurance that:

- Blyth Star Enterprises Limited is operating efficiently and effectively;
- All assets are safeguarded against unauthorised use or disposition and are properly applied;
- Proper records are maintained, and financial information used within Blyth Star Enterprises Limited is reliable, and;
- Blyth Star Enterprises Limited complies with relevant laws and regulations.

The Trustees are responsible for the maintenance and integrity of the corporate and financial information included on the charitable company's website. Legislation in the United Kingdom governing the preparation and dissemination of financial statements may differ from legislation in other jurisdictions.



## STATEMENT OF DISCLOSURE TO THE CHARITY'S AUDITORS

In so far as the Trustees are aware at the time of approving our Trustees' Annual Report:

- there is no relevant information, being information needed by the Charity's auditors in connection with preparing their report, of which the Charity's auditors are unaware, and;
- the Trustees, having made enquiries of fellow directors that they ought to have individually taken, have each taken all the steps that he/she is obliged to take as a director in order to make themselves aware of any relevant information and to establish that the Charity's auditors are aware of that information.

## INDEPENDENT AUDITOR

Emma Hartshorne-Ferguson BA FCA and Bell Tindle Williamson LLP are deemed to be re-appointed under Section 487(2) of the Companies Act 2006. Re-appointment will be confirmed at the next Annual General Meeting.

This report was approved by the Trustees on 18th December 2024 and signed on their behalf by:



T.P. Crisp JP  
Executive Chairman



**BLYTH STAR ENTERPRISES LIMITED**  
**(A COMPANY LIMITED BY GUARANTEE)**  
**INDEPENDENT AUDITORS REPORT TO THE TRUSTEES**  
**OF BLYTH STAR ENTERPRISES LIMITED**  
**YEAR ENDED 31ST MARCH 2024**

## **OPINION**

We have audited the financial statements of Blyth Star Enterprises Limited (the 'charitable company') for the year ended 31st March 2024 which comprise the statement of financial activities (incorporating income and expenditure account), the statement of financial position, the statement of cashflows and the related notes, including a summary of significant accounting policies. The financial reporting framework that has been applied in their preparation is applicable law and United Kingdom Accounting Standards, including FRS 102 The Financial Reporting Standard applicable in the UK and Republic of Ireland (United Kingdom Generally Accepted Accounting Practice).

In our opinion the financial statements:

- give a true and fair view of the state of the charitable company's affairs as at 31st March 2024 and of its incoming resources and application of resources for the year then ended;
- have been properly prepared in accordance with United Kingdom Generally Accepted Accounting Practice; and
- have been prepared in accordance with the requirements of the Companies Act 2006.

## **BASIS FOR OPINION**

We conducted our audit in accordance with International Standards on Auditing (UK) (ISAs (UK)) and applicable law. Our responsibilities under those standards are further described in the auditor's responsibilities for the audit of the financial statements section of our report. We are independent of the charitable company in accordance with the ethical requirements that are relevant to our audit of the financial statements in the UK, including the FRC's Ethical Standard, and we have fulfilled our other ethical responsibilities in accordance with these requirements. We believe that the audit evidence we have obtained is sufficient and appropriate to provide a basis for our opinion.

## **CONCLUSIONS RELATING TO GOING CONCERN**

In auditing the financial statements, we have concluded that the trustees' use of the going concern basis of accounting in the preparation of the financial statements is appropriate.

Based on the work we have performed, we have not identified any material uncertainties relating to events or conditions that, individually or collectively, may cast significant doubt on the charitable company's ability to continue as a going concern for a period of at least twelve months from when the financial statements are authorised for issue.

Our responsibilities and the responsibilities of the trustees with respect to going concern are described in the relevant sections of this report.

**BLYTH STAR ENTERPRISES LIMITED**  
**(A COMPANY LIMITED BY GUARANTEE)**  
**INDEPENDENT AUDITORS REPORT TO THE TRUSTEES**  
**OF BLYTH STAR ENTERPRISES LIMITED**  
**YEAR ENDED 31ST MARCH 2024**

**OTHER INFORMATION**

The other information comprises the information included in the Report of the Trustees, other than the financial statements and our auditor's report thereon. The trustees are responsible for the other information. Our opinion on the financial statements does not cover the other information and, except to the extent otherwise explicitly stated in our report, we do not express any form of assurance conclusion thereon.

In connection with our audit of the financial statements, our responsibility is to read the other information and, in doing so, consider whether the other information is materially inconsistent with the financial statements or our knowledge obtained in the audit or otherwise appears to be materially misstated. If we identify such material inconsistencies or apparent material misstatements, we are required to determine whether there is a material misstatement in the financial statements or a material misstatement of the other information. If, based on the work we have performed, we conclude that there is a material misstatement of this other information, we are required to report that fact.

We have nothing to report in this regard.

**OPINIONS ON OTHER MATTERS PRESCRIBED BY THE COMPANIES ACT 2006**

In our opinion, based on the work undertaken in the course of the audit:

- the information given in the Report of the Trustees for the financial year for which the financial statements are prepared is consistent with the financial statements; and
- the Report of the Trustees has been prepared in accordance with applicable legal requirements.

**MATTERS ON WHICH WE ARE REQUIRED TO REPORT BY EXCEPTION**

In the light of the knowledge and understanding of the charitable company and its environment obtained in the course of the audit, we have not identified material misstatements in the Report of the Trustees.

We have nothing to report in respect of the following matters in relation to which the Companies Act 2006 requires us to report to you if, in our opinion:

- adequate accounting records have not been kept, or returns adequate for our audit have not been received from branches not visited by us; or
- the financial statements are not in agreement with the accounting records and returns; or
- certain disclosures of Trustees' and key management personnel remuneration specified by law are not made; or
- we have not received all the information and explanations we require for our audit; or
- the trustees were not entitled to prepare the financial statements in accordance with the small companies regime and take advantage of the small companies' exemptions in preparing the trustees/directors' report and from the requirement to prepare a strategic report.

**BLYTH STAR ENTERPRISES LIMITED**  
**(A COMPANY LIMITED BY GUARANTEE)**  
**INDEPENDENT AUDITORS REPORT TO THE TRUSTEES**  
**OF BLYTH STAR ENTERPRISES LIMITED**  
**YEAR ENDED 31ST MARCH 2024**

### **RESPONSIBILITIES OF TRUSTEES**

As explained more fully in the trustees' responsibilities statement, the trustees are responsible for the preparation of the financial statements and for being satisfied that they give a true and fair view, and for such internal control as the trustees determine is necessary to enable the preparation of financial statements that are free from material misstatement, whether due to fraud or error.

In preparing the financial statements, the trustees are responsible for assessing the charitable company's ability to continue as a going concern, disclosing, as applicable, matters related to going concern and using the going concern basis of accounting unless the trustees either intend to liquidate the charitable company or to cease operations, or have no realistic alternative but to do so.

### **AUDITOR'S RESPONSIBILITIES FOR THE AUDIT OF THE FINANCIAL STATEMENTS**

Our objectives are to obtain reasonable assurance about whether the financial statements as a whole are free from material misstatement, whether due to fraud or error, and to issue an auditor's report that includes our opinion. Reasonable assurance is a high level of assurance, but is not a guarantee that an audit conducted in accordance with ISAs (UK) will always detect a material misstatement when it exists. Misstatements can arise from fraud or error and are considered material if, individually or in the aggregate, they could reasonably be expected to influence the economic decisions of users taken on the basis of these financial statements.

Irregularities, including fraud, are instances of non-compliance with laws and regulations. We design procedures in line with our responsibilities, outlined above, to detect material misstatements in respect of irregularities, including fraud. The extent to which our procedures are capable of detecting irregularities, including fraud is detailed below:

Our approach to identifying and assessing the risks of material misstatement in respect of irregularities, including fraud and non-compliance with laws and regulations, was as follows:

- The engagement partner ensured that the engagement team collectively had the appropriate competence, capabilities and skills to identify or recognise non-compliance with applicable laws and regulations;
- We identified the laws and regulations applicable to the charitable company through discussions with trustees and other management, and from our commercial knowledge and experience of the charitable sector;
- We focused on specific laws and regulations which we considered may have a direct material effect on the financial statements or the operations of the company, including the Companies Act 2006, taxation legislation and data protection, anti-bribery, employment, environmental, health and safety, mental health and mental capacity acts;
- We assessed the extent of compliance with the laws and regulations identified above through making enquiries of management and inspecting legal correspondence; and
- Identified laws and regulations were communicated within the audit team regularly and the team remained alert to instances of non-compliance throughout the audit.

We assessed the susceptibility of the charitable company's financial statements to material misstatement, including obtaining an understanding of how fraud might occur, by:

- Making enquiries of management as to where they considered there was susceptibility to fraud, their knowledge of actual, suspected and alleged fraud;

**BLYTH STAR ENTERPRISES LIMITED**  
**(A COMPANY LIMITED BY GUARANTEE)**  
**INDEPENDENT AUDITORS REPORT TO THE TRUSTEES**  
**OF BLYTH STAR ENTERPRISES LIMITED**  
**YEAR ENDED 31ST MARCH 2024**

**AUDITOR'S RESPONSIBILITIES FOR THE AUDIT OF THE FINANCIAL STATEMENTS** *(continued)*

- Considering the internal controls in place to mitigate risks of fraud and non-compliance with laws and regulations; and
- Understanding the design of the charitable company's remuneration policies.

To address the risk of fraud through management bias and override of controls, we:

- Performed analytical procedures to identify any unusual or unexpected relationships;
- Tested journal entries to identify unusual transactions;
- Assessed whether judgements and assumptions made in determining accounting estimates were indicative of potential bias; and
- Investigated the rationale behind significant or unusual transactions.

In response to the risk of irregularities and non-compliance with laws and regulations, we designed procedures which included, but were not limited to:

- Agreeing financial statement disclosures to underlying supporting documentation;
- Reading the minutes of meetings of those charged with governance;
- Enquiring of management as to actual and potential litigation and claims; and
- Reviewing correspondence with HMRC, relevant regulators and the charitable company's legal advisors.

There are inherent limitations in our audit procedures described above. The more removed that laws and regulations are from financial transactions, the less likely it is that we would become aware of non-compliance. Auditing standards also limit the audit procedures required to identify non-compliance with laws and regulations to enquiry of the directors and other management and the inspection of regulatory and legal correspondence, if any.

Material misstatements that arise due to fraud can be harder to detect than those that arise from error as they may involve deliberate concealment or collusion.

As part of an audit in accordance with ISAs (UK), we exercise professional judgment and maintain professional scepticism throughout the audit. We also:

- Identify and assess the risks of material misstatement of the financial statements, whether due to fraud or error, design and perform audit procedures responsive to those risks, and obtain audit evidence that is sufficient and appropriate to provide a basis for our opinion. The risk of not detecting a material misstatement resulting from fraud is higher than for one resulting from error, as fraud may involve collusion, forgery, intentional omissions, misrepresentations, or the override of internal control.
- Obtain an understanding of internal control relevant to the audit in order to design audit procedures that are appropriate in the circumstances, but not for the purpose of expressing an opinion on the effectiveness of the internal control.

**BLYTH STAR ENTERPRISES LIMITED**  
**(A COMPANY LIMITED BY GUARANTEE)**  
**INDEPENDENT AUDITORS REPORT TO THE TRUSTEES**  
**OF BLYTH STAR ENTERPRISES LIMITED**  
**YEAR ENDED 31ST MARCH 2024**

**AUDITOR'S RESPONSIBILITIES FOR THE AUDIT OF THE FINANCIAL STATEMENTS** *(continued)*

- Evaluate the appropriateness of accounting policies used and the reasonableness of accounting estimates and related disclosures made by the trustees.
- Conclude on the appropriateness of the trustees' use of the going concern basis of accounting and, based on the audit evidence obtained, whether a material uncertainty exists related to events or conditions that may cast significant doubt on the charitable company's ability to continue as a going concern. If we conclude that a material uncertainty exists, we are required to draw attention in our auditor's report to the related disclosures in the financial statements or, if such disclosures are inadequate, to modify our opinion. Our conclusions are based on the audit evidence obtained up to the date of our auditor's report. However, future events or conditions may cause the charitable company to cease to continue as a going concern.
- Evaluate the overall presentation, structure and content of the financial statements, including the disclosures, and whether the financial statements represent the underlying transactions and events in a manner that achieves fair presentation.

We communicate with those charged with governance regarding, among other matters, the planned scope and timing of the audit and significant audit findings, including any significant deficiencies in internal control that we identify during our audit.

**USE OF OUR REPORT**

This report is made solely to the charitable company's trustees, as a body, in accordance with chapter 3 of part 16 of the Companies Act 2006. Our audit work has been undertaken so that we might state to the charitable company's trustees those matters we are required to state to them in an auditor's report and for no other purpose. To the fullest extent permitted by law, we do not accept or assume responsibility to anyone other than the charitable company and the charitable company's trustees as a body, for our audit work, for this report, or for the opinions we have formed.



Emma Hartshorne-Ferguson BA FCA (Senior Statutory Auditor)

For and on behalf of  
Bell Tindle Williamson LLP  
Chartered Accountants & Statutory Auditor  
The Old Post Office  
63 Saville Street  
North Shields  
Tyne & Wear  
NE30 1AY

18th December 2024

**BLYTH STAR ENTERPRISES LIMITED**  
**(A COMPANY LIMITED BY GUARANTEE)**  
**STATEMENT OF FINANCIAL ACTIVITIES (INCORPORATING INCOME**  
**AND EXPENDITURE ACCOUNT) - YEAR ENDED 31ST MARCH 2024**

	<u>Note</u>	<u>Unrestricted Funds</u> £	<u>Restricted Funds</u> £	<u>Revaluation Reserve</u> £	<u>2024 Total</u> £	<u>2023 Total</u> £
<b>INCOME:</b>						
Donations and Legacies	3	33,366	68,600	-	101,966	447,521
Income from Other Trading Activities	4	63,223	-	-	63,223	63,654
Investment Income	5	6,696	-	-	6,696	1,254
Income from charitable activities	6	2,209,339	-	-	2,209,339	1,958,408
<b>TOTAL INCOME</b>		<u>2,312,624</u>	<u>68,600</u>	<u>-</u>	<u>2,381,224</u>	<u>2,470,837</u>
<b>EXPENDITURE:</b>						
<b>Costs of Raising Funds:</b>						
Trading Operations	7	18,483	-	-	18,483	25,435
Expenditure on Charitable Activities	8	2,128,851	69,805	-	2,198,656	1,869,925
Donations and Legacies Transfer	20	-	22,500	-	22,500	6,000
<b>TOTAL EXPENDITURE</b>		<u>2,147,334</u>	<u>92,305</u>	<u>-</u>	<u>2,239,639</u>	<u>1,901,360</u>
<b>NET INCOME AND NET MOVEMENT IN FUNDS FOR THE YEAR</b>		165,290	(23,705)	-	141,585	569,477
<b>RECONCILIATION OF FUNDS</b>						
Transfer Between Funds		3,468	(3,468)	-	-	-
Total Funds Brought Forward		2,116,139	255,841	18,109	2,390,089	1,820,612
<b>TOTAL FUNDS CARRIED FORWARD</b>		<u>2,284,897</u>	<u>228,668</u>	<u>18,109</u>	<u>2,531,674</u>	<u>2,390,089</u>

The Statement of Financial Activities includes all gains and losses in the year and therefore a statement of total recognised gains and losses has not been prepared.

All income and expenditure derives from continuing activities.

*The notes on pages 45 to 58 form part of these financial statements*

**BLYTH STAR ENTERPRISES LIMITED**  
**(A COMPANY LIMITED BY GUARANTEE)**  
**STATEMENT OF FINANCIAL POSITION AS AT 31ST MARCH 2024**

	<u>Note</u>	<u>2024</u>		<u>2023</u>	
		<u>£</u>	<u>£</u>	<u>£</u>	<u>£</u>
<b>FIXED ASSETS</b>					
Tangible Assets	12		1,712,759		1,768,098
<b>CURRENT ASSETS</b>					
Stocks	13	4,817		4,816	
Debtors	14	340,373		117,064	
Bank and Cash Balances		590,709		619,844	
		<u>935,899</u>		<u>741,724</u>	
<b>CREDITORS - AMOUNTS DUE WITHIN ONE YEAR</b>	15	<u>116,984</u>		<u>119,733</u>	
<b>NET CURRENT ASSETS</b>			818,915		621,991
<b>TOTAL ASSETS LESS CURRENT LIABILITIES</b>			<u>2,531,674</u>		<u>2,390,089</u>
Unrestricted Funds	20		2,284,897		2,116,139
Restricted Funds	20		228,668		255,841
Revaluation Reserve	20		18,109		18,109
<b>TOTAL FUNDS</b>			<u>2,531,674</u>		<u>2,390,089</u>

These financial statements have been prepared in accordance with the provisions applicable to companies subject to the small companies' regime and in accordance with FRS 102 'The Financial Reporting Standard applicable in the UK and Republic of Ireland'.

These financial statements were approved by the directors and authorised for issue on 18th December 2024 and are signed on their behalf by:



.....  
T. P. CHRISP  
Chairman

Company Registration Number 02152943

**BLYTH STAR ENTERPRISES LIMITED**  
**(A COMPANY LIMITED BY GUARANTEE)**  
**STATEMENT OF CASH FLOWS FOR THE YEAR ENDING 31ST MARCH 2024**

	<u>Note</u>	<u>2024</u> <u>£</u>	<u>2023</u> <u>£</u>
<b>Cash flows from operating activities</b>	<b>22</b>	<u>(33,569)</u>	<u>845,196</u>
<b>Cash flows from investing activities</b>			
Interest received		6,696	1,254
Purchase of tangible fixed assets		(7,470)	(153,630)
Proceeds from sale of tangible fixed assets		5,208	-
<b>Cash used in investing activities</b>		<u>4,434</u>	<u>(152,376)</u>
<b>Cash flows from financing activities</b>			
Repayment of borrowings		-	(600,516)
<b>Cash used in financing activities</b>		<u>-</u>	<u>(600,516)</u>
(Decrease) / increase in cash and cash equivalents in the year		(29,135)	92,304
Cash and cash equivalents at 31st March 2023		619,844	527,540
<b>Total cash and cash equivalents at 31st March 2024</b>		<u>590,709</u>	<u>619,844</u>

*The notes on pages 45 to 58 form part of these financial statements*

**BLYTH STAR ENTERPRISES LIMITED**  
**(A COMPANY LIMITED BY GUARANTEE)**  
**NOTES TO THE FINANCIAL STATEMENTS - YEAR ENDED 31ST MARCH 2024**

**1 ACCOUNTING POLICIES**

The principal accounting policies adopted, judgements and key sources of estimation uncertainty in the preparation of the financial statements are as follows:

**a) Basis of Preparation of Financial Statements**

The financial statements have been prepared under the historical cost convention and in accordance with Charities: Statement of Recommended Practice (applicable to charities preparing their financial statements in accordance with the Financial Reporting Standard applicable in the UK and Republic of Ireland (FRS 102)) (issued in October 2019) - (Charities SORP (FRS 102)), the Financial Reporting Standard applicable in the UK and Republic of Ireland (FRS 102) and the Companies Act 2006.

Blyth Star Enterprises Limited meets the definition of a public benefit entity under FRS 102. Assets and liabilities are initially recognised at historical cost or transaction value unless otherwise stated in the relevant accounting policy note.

The financial statements are prepared in sterling, which is the functional currency of the entity. Monetary amounts in these financial statements are rounded to the nearest £.

**b) Preparation of the Financial Statements on a Going Concern Basis**

The trustees consider that there are no material uncertainties about the Charity's ability to continue as a going concern. There are no significant judgements or key sources of estimation uncertainty that effect the financial statements.

**c) Income**

All income is recognised once the charity has entitlement to the income, it is probable that the income will be received and the amount of income receivable can be measured reliably.

The following specific policies are applied to particular categories of income:

- Donations and grants are recognised when the charity has been notified in writing of both the amount and settlement date. In the event that a donation is subject to conditions that require a level of performance before the entitled to the funds, the income is deferred until either those conditions are fully met, or the fulfilment of those conditions is wholly within the control of the charity and it is probable that those conditions will be fulfilled in the reporting period.
- Investment income is included when receivable.
- Income from trading activities is recognised as earned.
- Income from charitable activities is recognised when an invoice is raised.

**BLYTH STAR ENTERPRISES LIMITED**  
**(A COMPANY LIMITED BY GUARANTEE)**  
**NOTES TO THE FINANCIAL STATEMENTS - YEAR ENDED 31ST MARCH 2024**

**1 ACCOUNTING POLICIES** *(continued)*

**d) Fund Accounting**

Unrestricted Funds are funds which are available for use at the discretion of the trustees in furtherance of the general objectives of the Charity and which have not been designated for other purposes.

Designated Funds are funds in respect of grants received for capital purposes where the related capital asset has been purchased thereby satisfying the grant condition. The annual depreciation charge on these assets is charged to this fund. Designated funds form part of the Charity's unrestricted funds.

Restricted Funds are funds which are to be used in accordance with specific restrictions imposed by donors or which have been raised by the Charity for particular purposes. The cost of raising and administering such funds are charged against the specific fund.

**e) Expenditure**

Expenditure is recognised once there is a legal or constructive obligation to make a payment to a third party, it is probable that settlement will be required and the amount of the obligation can be measured reliably. Expenditure is classified under the following activity headings:

- Costs of raising funds comprise the costs of commercial trading included in Day activities and Woodwork, and Nursery activities.
- Charitable expenditure comprises those costs incurred by the charity in the delivery of its activities and services. It includes both costs that can be allocated directly to specific departments and those costs of an indirect nature necessary to support them.
- Governance costs include those costs associated with meeting the constitutional and statutory requirements of the charity and include audit fees and costs linked to the strategic management of the charity.

**f) Support Costs**

Support costs are those functions that assist in the work of the charity but do not directly undertake charitable activities. Support costs include office costs, finance, payroll and governance costs which support the charity's activities. These costs have been included within expenditure on charitable activities.

**g) Tangible Fixed Assets and Restricted Funds**

Blyth Star Enterprises Limited may receive grants that can only be used for expenditure on fixed assets. The directors consider that the following policies are required to satisfy their obligations under Company and Charitable Law:-

- Expenditure on the fixed asset is capitalised. The fixed asset being depreciated over its useful economic life in accordance with the company's accounting policy.
- Grants received specifically to finance the expenditure are credited to a restricted fund and are transferred to unrestricted reserves when the grant has been spent and the restriction no longer applies.

**BLYTH STAR ENTERPRISES LIMITED**  
**(A COMPANY LIMITED BY GUARANTEE)**  
**NOTES TO THE FINANCIAL STATEMENTS - YEAR ENDED 31ST MARCH 2024**

**1 ACCOUNTING POLICIES** *(continued)*

**h) Tangible Fixed Assets**

All fixed assets are initially recorded at cost, and subsequently stated at cost less any accumulated depreciation and impairment losses.

Depreciation is calculated to write off the cost of fixed assets over the expected useful lives of the assets concerned. The principal annual rates for this purpose, which are consistent with those of the previous year, are:-

	<u>%</u>	
Motor Vehicles	25	reducing balance
Plant and Equipment	20/25	reducing balance
Plant and Equipment	6.67/10	straight line
Fixtures and Fittings	25	reducing balance
Freehold Property	1	straight line

**i) Stocks**

Stocks are valued at the lower of cost and net realisable value. Provision is made, where necessary, for obsolete and slow moving items.

**j) Debtors**

Trade and other debtors are recognised at the settlement amount due after any trade discount offered. Prepayments are valued at the amount prepaid.

**k) Cash at Bank and in Hand**

Cash at bank and in hand comprises funds held in the charity bank current and deposit accounts and petty cash.

**l) Creditors and Provisions**

Creditors are recognised where the charity has a present obligation resulting from a past event that will probably result in the transfer of funds to a third party and the amount due to settle the obligation can be measured or estimated reliably. Creditors are normally recognised at their settlement amount after allowing for any trade discount received.

**m) Operating Leases**

Rentals payable under operating leases, including any lease incentives received, are charged to income on a straight line basis over the term of the relevant lease except where another more systematic basis is more representative of the time pattern in which economic benefits from the lease asset are consumed.

**BLYTH STAR ENTERPRISES LIMITED**  
**(A COMPANY LIMITED BY GUARANTEE)**  
**NOTES TO THE FINANCIAL STATEMENTS - YEAR ENDED 31ST MARCH 2024**

**1 ACCOUNTING POLICIES** *(continued)*

**n) Defined Contribution Pension Plans**

Contributions to defined contribution pension plans are recognised as an expense in the period in which the related service is provided. Prepaid contributions are recognised as an asset to the extent that the prepayment will lead to a reduction in future payments or a cash refund.

**o) Financial Instruments**

A financial asset or liability is recognised only when the entity becomes a party to the contractual provisions of the instrument.

Basic financial instruments are initially recognised at the transaction price, unless the arrangement constitutes a financing transaction, where it is recognised at the present value of the future payments discounted at a market rate of interest for a similar debt instrument. Debt instruments are subsequently measured at amortised cost.

**2 LEGAL STATUS**

Blyth Star Enterprises Limited is a private company limited by guarantee and as such has no share capital.

In the event of the charitable company being wound up, the Trustees would be required to contribute an amount not exceeding £10.

**3 DONATIONS AND LEGACIES**

	<u>Unrestricted</u>	<u>Restricted</u>	<u>2024</u> <u>Total</u>	<u>2023</u> <u>Total</u>
	<u>£</u>	<u>£</u>	<u>£</u>	<u>£</u>
<b><i>Donations:</i></b>				
Day Activities and Woodwork	301	-	301	-
Nursery	2	-	2	-
Central Services	30,063	-	30,063	50,878
Miscellaneous Projects	-	-	-	10
	<u>30,366</u>	<u>-</u>	<u>30,366</u>	<u>50,888</u>
<b><i>Grants Receivable:</i></b>	<u>3,000</u>	<u>68,600</u>	<u>71,600</u>	<u>396,633</u>
<b>TOTAL INCOME</b>	<u>33,366</u>	<u>68,600</u>	<u>101,966</u>	<u>447,521</u>

In accordance with FRS 102 and the Charities SORP (FRS 102), the economic contribution of general volunteers is not recognised in the financial statements.

**BLYTH STAR ENTERPRISES LIMITED**  
**(A COMPANY LIMITED BY GUARANTEE)**

**NOTES TO THE FINANCIAL STATEMENTS - YEAR ENDED 31ST MARCH 2024**

**3 DONATIONS AND LEGACIES (continued)**

The charity was very grateful to receive the following grants during the year:

	<u>£</u>
Jill Franklin Charitable Trust	39,600
The D'Oyly Carte Charitable Trust	3,000
Community Foundation	8,000
29 May 61 Charitable Trust	7,000
The Sylvia Waddilove Foundation	3,000
The Garfield Weston Foundation	8,000
The Mel Weir Charitable Trust	1,000
The Joseph Frazer Strong Trust	2,000
	71,600

**4 INCOME FROM OTHER TRADING ACTIVITIES**

	<u>Unrestricted</u>	<u>Restricted</u>	<u>2024</u>	<u>2023</u>
	<u>£</u>	<u>£</u>	<u>Total</u>	<u>Total</u>
			<u>£</u>	<u>£</u>
<i>Income Derived from Commercial Operations:</i>				
Day Activities and Woodwork	9,187	-	9,187	9,471
Nursery	54,036	-	54,036	54,183
	63,223	-	63,223	63,654

**5 INVESTMENT INCOME**

	<u>Unrestricted</u>	<u>Restricted</u>	<u>2024</u>	<u>2023</u>
	<u>£</u>	<u>£</u>	<u>Total</u>	<u>Total</u>
			<u>£</u>	<u>£</u>
<i>Bank Interest Received:</i>				
Central Services	6,696	-	6,696	1,254
	6,696	-	6,696	1,254

**BLYTH STAR ENTERPRISES LIMITED**  
**(A COMPANY LIMITED BY GUARANTEE)**  
**NOTES TO THE FINANCIAL STATEMENTS - YEAR ENDED 31ST MARCH 2024**

**6 INCOME FROM CHARITABLE ACTIVITIES**

	<u>Unrestricted</u>	<u>Restricted</u>	<u>2024</u> <u>Total</u>	<u>2023</u> <u>Total</u>
	<u>£</u>	<u>£</u>	<u>£</u>	<u>£</u>
<b>PROVISION OF CLIENT SERVICES</b>				
<i>Care Management:</i>				
Residential Service/Living Support	1,574,763	-	1,574,763	1,461,389
Day Activities and Woodwork	191,614	-	191,614	147,972
Nursery	178,744	-	178,744	169,060
Miscellaneous Projects	36,480	-	36,480	42,479
<i>Rents and Housing Benefit:</i>				
Residential Service/Living Support	223,689	-	223,689	135,497
	<u>2,205,290</u>	<u>-</u>	<u>2,205,290</u>	<u>1,956,397</u>
<b>OTHER CLIENT RELATED INCOME</b>				
<i>Management Charges Income:</i>				
Central Services	1,138	-	1,138	545
<i>Students:</i>				
Residential Service/Living Support	-	-	-	40
<i>Miscellaneous Income:</i>				
Day Activities and Woodwork	94	-	94	250
Nursery	-	-	-	1,155
Central Services	21	-	21	21
Miscellaneous Projects	30	-	30	-
<i>Sale of Assets</i>				
Nursery	2,766	-	2,766	-
	<u>4,049</u>	<u>-</u>	<u>4,049</u>	<u>2,011</u>
<b>TOTAL INCOME</b>	<u>2,209,339</u>	<u>-</u>	<u>2,209,339</u>	<u>1,958,408</u>

**7 COST OF RAISING FUNDS - TRADING OPERATIONS**

	<u>Unrestricted</u>	<u>Restricted</u>	<u>2024</u> <u>Total</u>	<u>2023</u> <u>Total</u>
	<u>£</u>	<u>£</u>	<u>£</u>	<u>£</u>
<i>Day Activities and Woodwork:</i>				
Opening Stock	-	-	-	6,054
Purchases	1,510	-	1,510	2,585
	<u>1,510</u>	<u>-</u>	<u>1,510</u>	<u>8,639</u>
<i>Nursery:</i>				
Opening Stock	3,916	-	3,916	3,503
Purchases	16,974	-	16,974	17,209
Closing Stock	(3,917)	-	(3,917)	(3,916)
	<u>16,973</u>	<u>-</u>	<u>16,973</u>	<u>16,796</u>
<b>TOTAL COST OF RAISING FUNDS</b>	<u>18,483</u>	<u>-</u>	<u>18,483</u>	<u>25,435</u>

**BLYTH STAR ENTERPRISES LIMITED**  
**(A COMPANY LIMITED BY GUARANTEE)**  
**NOTES TO THE FINANCIAL STATEMENTS - YEAR ENDED 31ST MARCH 2024**

**8 EXPENDITURE ON CHARITABLE ACTIVITIES**

	Residential Service		Day Activities and Woodwork		Nursery		Central Services		Lionhearts Projects		2024 Total		Residential Service	Day Activities and Woodwork	Nursery	Central Services	Lionhearts Projects	2023 Total		
	Unrestricted	Restricted	Unrestricted	Restricted	Unrestricted	Restricted	Unrestricted	Restricted	Unrestricted	Restricted	Unrestricted	Restricted								
<b>Property Costs</b>																				
Rent & Rates	33,861	-	22,817	-	1,493	-	12,813	-	-	-	-	-	25,562	22,508	1,436	12,889	-	-	62,395	
Light & Heat	6,472	-	7,171	-	2,987	-	-	-	-	-	-	-	17,352	5,358	3,180	-	-	-	25,890	
Repairs and Maintenance	33,146	-	2,565	-	20,799	-	6,662	-	163	-	163	-	28,423	3,315	10,032	4,586	597	-	46,953	
Cleaning	3,691	-	1,508	-	3,811	-	20	-	26	-	26	-	2,804	779	4,126	14	16	-	7,739	
Insurance	18,074	-	922	-	6,266	-	862	-	-	-	-	-	19,131	2,985	5,241	733	-	-	28,090	
	95,244	-	34,983	-	33,356	-	20,337	-	189	-	189	-	93,272	34,945	24,015	18,222	613	-	171,067	
<b>Client Costs</b>																				
Holidays, Outings and Celebrations	1,422	-	-	-	205	-	1,337	-	-	-	-	-	1,000	-	234	4,698	36	-	5,968	
Activity Group	-	-	11	-	-	-	-	-	-	-	11	-	22	-	52	-	5,294	-	5,368	
Consumables	-	-	-	-	-	-	-	-	-	-	-	-	-	-	-	-	91	-	91	
Food and Provisions	10,300	-	7,021	-	554	-	47	-	61	-	17,983	-	11,028	4,694	847	86	1,091	17,746	5,920	
Social Training Escort	6,117	-	-	-	-	-	-	-	1,000	-	7,117	-	5,572	-	-	-	348	-	5,920	
Wages	824,318	30,205	116,351	39,600	161,065	-	-	-	65,735	-	1,237,274	-	708,910	97,831	171,504	-	58,095	-	1,036,340	
Motor and Travel	123,043	-	130	-	15,187	-	3,167	-	16,137	-	157,664	-	124,328	1,913	16,982	1,898	12,010	-	157,131	
Protective Clothing	965,200	30,205	123,605	39,600	178,248	-	4,571	-	82,933	-	1,424,362	-	850,860	104,563	191,004	6,719	76,965	-	1,547	
<b>Management and Administration</b>																				
Wages	-	-	-	-	-	-	322,296	-	-	-	322,296	-	-	1,635	-	282,910	-	-	282,910	
Management Charge & Project Support	-	-	-	-	1,594	-	2,016	-	988	-	16,945	-	7,881	2,085	1,744	2,165	861	-	14,736	
Telephone and TV Costs	10,167	-	2,180	-	398	-	3,411	-	363	-	7,595	-	3,495	986	298	2,237	123	-	7,139	
Postage Printing and Stationery	2,481	-	942	-	216	-	6,381	-	102	-	7,892	-	700	243	333	1,979	99	-	3,354	
Advertising and Recruitment	1,067	-	126	-	2,052	-	688	-	-	-	4,983	-	1,338	666	1,248	393	134	-	3,779	
Training	1,941	-	302	-	1,245	-	570	-	-	-	2,614	-	1,664	559	1,142	301	-	-	2,002	
Subscriptions and Donations	-	-	799	-	492	-	33	-	-	-	2,162	-	1,664	17	46	342	-	-	2,069	
Health and Safety	1,430	-	207	-	-	-	91	-	-	-	131	-	54	39	206	148	-	-	447	
Sundry Expenses	40	-	-	-	-	-	13,727	-	-	-	45,927	-	15,900	105	400	6,339	-	-	22,744	
Consultancy and Professional Fees	32,200	-	-	-	-	-	-	-	-	-	16,798	-	-	-	-	15,010	-	-	15,010	
Entertaining and Conference Costs	-	-	-	-	-	-	16,798	-	-	-	10,640	-	-	-	-	6,560	-	-	6,560	
Accountancy	-	-	-	-	-	-	10,640	-	-	-	24,645	-	-	-	-	12,871	-	-	12,871	
Governance Costs	-	-	-	-	7,273	-	17,372	-	-	-	24,645	-	-	-	7,815	331,318	1,217	-	20,686	
Irrecoverable Input Vat	49,326	-	4,536	-	13,270	-	394,023	-	1,453	-	462,628	-	31,032	6,335	13,232	331,318	1,217	-	383,134	
<b>Finance Costs</b>																				
Bank Charges	-	-	-	-	553	-	1,235	-	-	-	1,788	-	-	-	627	1,625	-	-	2,252	
Bank Loan and Mortgage Interest	-	-	-	-	-	-	16,787	-	-	-	60,367	-	19,821	-	-	-	-	-	19,821	
Depreciation	23,866	-	2,064	-	17,650	-	-	-	-	-	62,934	-	16,206	1,679	21,610	23,876	-	-	63,371	
Loss on Disposal of Assets	-	-	-	-	-	-	62,934	-	-	-	448	-	169	-	-	-	-	-	169	
Authorised Push Payment Fraud	-	-	-	-	-	-	-	-	448	-	448	-	-	-	-	-	-	-	-	
Bad Debts	-	-	2,064	-	18,203	-	80,936	-	448	-	125,537	-	36,196	1,679	22,237	25,501	-	-	85,613	
<b>TOTAL CHARITABLE COSTS</b>	1,133,636	30,205	165,208	39,600	245,077	-	499,907	-	85,023	-	2,198,656	-	1,011,360	147,522	250,488	381,760	78,795	-	1,869,925	

**BLYTH STAR ENTERPRISES LIMITED**  
**(A COMPANY LIMITED BY GUARANTEE)**  
**NOTES TO THE FINANCIAL STATEMENTS - YEAR ENDED 31ST MARCH 2024**

**9 NET INCOME FOR THE YEAR**

This is stated after charging:

	<u>2024</u> <u>Total</u> £	<u>2023</u> <u>Total</u> £
Audit	10,640	6,560
Depreciation	60,367	62,921
<i>Operating lease costs:</i>		
Motor vehicles	67,885	66,981
Property	45,916	45,916
Telephone equipment	1,451	1,490

**10 ANALYSIS OF STAFF COSTS, TRUSTEE REMUNERATION AND EXPENSES AND THE COST OF KEY MANAGEMENT PERSONNEL**

	<u>Unrestricted</u> £	<u>Restricted</u> £	<u>2024</u> <u>Total</u> £	<u>2023</u> <u>Total</u> £
Residential Service	824,318	30,205	854,523	708,910
Day Activities and Woodwork	116,351	39,600	155,951	97,831
Nurseries	161,065	-	161,065	171,504
Central Services	322,296	-	322,296	282,910
Lionhearts Project	65,735	-	65,735	58,095
	<u>1,489,765</u>	<u>69,805</u>	<u>1,559,570</u>	<u>1,319,250</u>

Staff costs include: Employers National Insurance costs of £120,790 (2023: £105,131) and a defined contribution pension charge of £27,762 (2023: £21,546).

One member of staff received emoluments in excess of £60,000 (2023: 1).

T. P. Chrisp received remuneration, including pension contributions and travel expenses, of £90,523 (2023: £81,006) for his services as Finance Director/Trustee. No remuneration, directly or indirectly, was paid or payable, from the funds of the Charity to any of its other directors/trustees during the year, with the exception of one trustee who was paid £9,440 (2023: £Nil) for her services as Philanthropy and Marketing Manager.

Other than as noted above, no Charity Trustees were paid or received any other benefits from employment with the charity in the year (2023: £Nil) neither were they reimbursed expenses during the year (2023: £Nil).

The key management personnel of the Charity comprise the trustees, the chief executive, Ms J. Dixon, the finance director/chairman, T. P. Chrisp, and a consultant, G. Moore MBE. The total employee benefits of the key management personnel were £198,257 (2023: £165,018).

**11 STAFF NUMBERS**

The average number of employees during the year was as follows:

	<u>2024</u> <u>Number</u>	<u>2023</u> <u>Number</u>
Accommodation	42	39
Workshops and Day Services	15	15
Central Services	8	7
	<u>65</u>	<u>61</u>

**BLYTH STAR ENTERPRISES LIMITED**  
**(A COMPANY LIMITED BY GUARANTEE)**  
**NOTES TO THE FINANCIAL STATEMENTS - YEAR ENDED 31ST MARCH 2024**

**12 TANGIBLE FIXED ASSETS**

	<b><u>Freehold Property</u></b>	<b><u>Motor Vehicles</u></b>	<b><u>Fixtures &amp; Fittings</u></b>	<b><u>Plant &amp; Equipment</u></b>	<b><u>Total</u></b>
	<b><u>£</u></b>	<b><u>£</u></b>	<b><u>£</u></b>	<b><u>£</u></b>	<b><u>£</u></b>
<b>COST</b>					
At 1st April 2023	1,665,556	106,266	22,112	519,512	2,313,446
Additions	3,468	-	-	4,002	7,470
Disposals	-	(19,100)	(925)	(128,722)	(148,747)
At 31st March 2024	<u>1,669,024</u>	<u>87,166</u>	<u>21,187</u>	<u>394,792</u>	<u>2,172,169</u>
<b>DEPRECIATION</b>					
At 1st April 2023	84,259	70,153	15,031	375,905	545,348
Charge for year	16,656	9,028	1,833	32,850	60,367
Disposals	-	(16,658)	(925)	(128,722)	(146,305)
At 31st March 2024	<u>100,915</u>	<u>62,523</u>	<u>15,939</u>	<u>280,033</u>	<u>459,410</u>
<b>NET BOOK VALUE</b>					
At 31st March 2024	<u>1,568,109</u>	<u>24,643</u>	<u>5,248</u>	<u>114,759</u>	<u>1,712,759</u>
At 31st March 2023	<u>1,581,297</u>	<u>36,113</u>	<u>7,081</u>	<u>143,607</u>	<u>1,768,098</u>

**13 STOCKS**

	<b><u>2024</u></b>	<b><u>2023</u></b>
	<b><u>£</u></b>	<b><u>£</u></b>
Nursery	3,917	3,916
Old Chandlery	900	900
	<u>4,817</u>	<u>4,816</u>

**14 DEBTORS**

	<b><u>2024</u></b>	<b><u>2023</u></b>
	<b><u>£</u></b>	<b><u>£</u></b>
Trade Debtors	167,280	41,537
Prepayments and Accrued Income	74,706	48,496
The Woodfuel Centre CIC	98,367	27,031
Other Debtors	20	-
	<u>340,373</u>	<u>117,064</u>

**BLYTH STAR ENTERPRISES LIMITED**  
**(A COMPANY LIMITED BY GUARANTEE)**  
**NOTES TO THE FINANCIAL STATEMENTS - YEAR ENDED 31ST MARCH 2024**

**15 CREDITORS**

	<u>2024</u>	<u>2023</u>
	<u>£</u>	<u>£</u>
<b>Amounts due within one year:-</b>		
Trade Creditors	21,800	17,886
Accruals	60,117	95,899
Other Creditors	114	195
PAYE and NIC	33,933	5,384
Value Added Tax	1,020	369
	<u>116,984</u>	<u>119,733</u>

**16 COMMITMENTS UNDER OPERATING LEASES**

The total future minimum lease payments under non-cancellable operating leases are as follows:

	<u>2024</u>	<u>2023</u>
	<u>£</u>	<u>£</u>
Not later than one year	84,688	105,060
Later than 1 year and not later than 5 years	59,552	87,120
Later than 5 years	-	-
	<u>144,240</u>	<u>192,180</u>

**BLYTH STAR ENTERPRISES LIMITED**  
**(A COMPANY LIMITED BY GUARANTEE)**  
**NOTES TO THE FINANCIAL STATEMENTS - YEAR ENDED 31ST MARCH 2024**

**17 TAXATION**

As a Charity, Blyth Star Enterprises Limited is exempt from tax on income and gains falling within section 505 of the Taxes Act 1988 or section 256 of the Taxation of Chargeable Gains Act 1992 to the extent that these are applied to its charitable objects. No tax charges have arisen in the Charity.

**18 ANALYSIS OF NET ASSETS**

	<u>Unrestricted</u>	<u>Restricted</u>	<u>Total</u>
	<u>£</u>	<u>£</u>	<u>£</u>
Tangible Fixed Assets	1,712,759	-	1,712,759
Current Assets	707,211	228,688	935,899
Current Liabilities	(116,984)	-	(116,984)
	<u>2,302,986</u>	<u>228,688</u>	<u>2,531,674</u>

**ANALYSIS OF NET ASSETS - PREVIOUS YEAR**

	<u>Unrestricted</u>	<u>Restricted</u>	<u>Total</u>
	<u>£</u>	<u>£</u>	<u>£</u>
Tangible Fixed Assets	1,768,098	-	1,768,098
Current Assets	485,883	255,841	741,724
Current Liabilities	(119,733)	-	(119,733)
	<u>2,134,248</u>	<u>255,841</u>	<u>2,390,089</u>

**19 AUDITORS REMUNERATION**

		<u>2024</u>	<u>2023</u>
		<u>£</u>	<u>£</u>
Auditors Remuneration:	As Auditors	10,640	6,560
	Accountancy	14,680	13,520
	Payroll and Pension Services	2,436	2,616
		<u>27,756</u>	<u>22,696</u>

**BLYTH STAR ENTERPRISES LIMITED**  
**(A COMPANY LIMITED BY GUARANTEE)**  
**NOTES TO THE FINANCIAL STATEMENTS - YEAR ENDED 31ST MARCH 2024**

**20 STATEMENT OF FUNDS**

	<u>Balance</u> <u>1st April</u> <u>2023</u> <u>£</u>	<u>Transfers</u> <u>£</u>	<u>Income</u> <u>£</u>	<u>Expended</u> <u>£</u>	<u>Balance</u> <u>31st March</u> <u>2024</u> <u>£</u>
<b>Unrestricted Funds :</b>					
<i>General</i>	2,116,139	3,468	2,312,624	(2,147,334)	2,284,897
<b>Revaluation Reserve</b>	18,109	-	-	-	18,109
<b>Restricted Funds:</b>					
<i>Capital Grants</i>					
The Barbour Foundation	10,000	(10,000)	-	-	-
The Evan Cornish Foundation	10,000	(10,000)	-	-	-
Northumberland County Council - Community Chest Scheme	3,133	(3,133)	-	-	-
29 May 61 Charitable Trust	-	(168)	7,000	-	6,832
The Sylvia Waddilove Foundation	-	(167)	3,000	-	2,833
The D'Oyly Carte Charitable Trust	-	-	3,000	-	3,000
The Garfield Weston Foundation	-	-	8,000	-	8,000
	23,133	(23,468)	21,000	-	20,665
<b>Restricted Funds:</b>					
<i>Revenue Grants</i>					
Nationwide Building Society Community Grants	5,208	-	-	-	5,208
The Sobell Foundation	2,500	(2,500)	-	-	-
The Edward Gostling Foundation	225,000	-	-	(30,205)	194,795
Jill Franklin Charitable Trust	-	-	39,600	(39,600)	-
Community Foundation	-	-	8,000	-	8,000
	232,708	(2,500)	47,600	(69,805)	208,003
	2,390,089	(22,500)	2,381,224	(2,217,139)	2,531,674

**BLYTH STAR ENTERPRISES LIMITED**  
**(A COMPANY LIMITED BY GUARANTEE)**  
**NOTES TO THE FINANCIAL STATEMENTS - YEAR ENDED 31ST MARCH 2024**

**20 STATEMENT OF FUNDS** *(continued)*

**Capital Grants Transfer**

Grants of £20,000 brought forward from the 2023 financial year in respect of the purchase of an electric vehicle have been transferred to The Woodfuel Centre CIC, a company controlled by Blyth Star Enterprises Limited.

**Revenue Grants Transfer**

A grant of £2,500 brought forward from the 2023 financial year in respect of funding a support worker has been transferred to The Woodfuel Centre CIC, a company controlled by Blyth Star Enterprises Limited.

**Unrestricted Funds**

These are funds which the trustees are free to use in accordance with the charity's objectives.

**Revaluation Reserve**

This represents the surplus between the original cost of the Old Chandlery freehold property and the professional valuation in 2011 which was used as the property's deemed cost on transition to FRS 102.

**Restricted Funds**

These are funds given for particular purposes and projects and are summarised as follows:

***Capital Grants***

The Barbour Foundation	Monies received to acquire an electric vehicle.
The Evan Cornish Foundation	Monies received to acquire an electric vehicle.
Northumberland County Council - Community Chest Scheme	Monies received to create a building extension.
29 May 61 Charitable Trust	Monies received to create a building extension.
The Sylvia Waddilove Foundation	Monies received to create a building extension.
The D'Oyly Carte Charitable Trust	Monies received to support the Barren Land project.
The Garfield Weston Foundation	Monies received to create a building extension.

***Revenue Grants***

Nationwide Building Society Community Grants	Monies received to support employment of a tenancy manager.
The Sobell Foundation	Monies received to support employment of a support worker.
The Edward Gostling Foundation	Monies received to support Living Support services.
Jill Franklin Charitable Trust	Monies received to support employment of a support worker.
Community Foundation	Monies received to upgrade kitchen.

**Transfer Between Funds**

£3,468 of restricted reserves has been spent on capital expenditure during the year and a transfer has been made to unrestricted reserves as the restriction no longer applies.

**21 ANALYSIS OF CHANGES IN NET DEBT**

	<u>At</u> <u>1 Apr 2023</u> <u>£</u>	<u>Cashflows</u> <u>£</u>	<u>At</u> <u>31 Mar 2024</u> <u>£</u>
Cash at bank and in hand	619,844	(29,135)	590,709

**BLYTH STAR ENTERPRISES LIMITED**  
**(A COMPANY LIMITED BY GUARANTEE)**  
**NOTES TO THE FINANCIAL STATEMENTS - YEAR ENDED 31ST MARCH 2024**

**22 RECONCILIATION OF NET MOVEMENT IN FUNDS TO NET CASH FROM OPERATING ACTIVITIES**

	<u>2024</u>	<u>2023</u>
	<u>£</u>	<u>£</u>
Net Movement in Funds	141,585	569,477
Depreciation	60,367	63,371
(Profit)/Loss on Disposal of Assets	(2,766)	169
Interest Income	(6,696)	(1,254)
(Increase)/Decrease in Stock	(1)	5,641
(Increase)/Decrease in Debtors	(223,309)	183,973
(Decrease)/Increase in Creditors	(2,749)	23,819
	<u>(33,569)</u>	<u>845,196</u>

**23 DIRECTORS' TRANSACTIONS AND RELATED PARTY TRANSACTIONS**

T.P Chrisp is also a director of the Woodfuel Centre CIC.

In the year to 31st March 2024, Blyth Star Enterprises Limited received a management charge of £1,138 (2023: £545) and a donation of £30,000 (2023: £50,000) from The Woodfuel Centre CIC and paid to The Woodfuel Centre CIC a contribution of £Nil (2023: £1,635) towards overheads in respect of the Woodwork Department. Grants received of £22,500 (2023: £6,000) in respect of the purchase of an electric vehicle and employment of a support worker were transferred to The Woodfuel Centre CIC during the year.

At 31st March 2024 The Woodfuel Centre CIC owed £98,367 (2023: £27,031) to Blyth Star Enterprises Limited and this is shown in year end debtors.

Blyth Star Enterprises Limited continue to provide administrative support free of charge to The Woodfuel Centre CIC.

The directors had no material interest in any other transaction entered into by the charity during the year.

No other transactions with related parties were undertaken such as are required to be disclosed under the Financial Reporting Standard applicable in the UK and Republic of Ireland (FRS 102).

**24 ULTIMATE CONTROLLING PARTY**

In the opinion of the Trustees, there is no ultimate controlling party of the charity other than the Board itself.

**25 AUTHORISED PUSH PAYMENT FRAUD**

As reported last year, the charity was subject to a complex cyber fraud which led to seven fraudulent transfers amounting to £127,756 being taken from one of the charity's bank accounts. £64,822 was returned to the charity. Despite continued and persistent efforts from the the charity, no further monies have been recovered. The unrecovered amount of £62,934 is shown as a cost within charitable expenditure during the year.

**BLYTH STAR ENTERPRISES LIMITED**  
**(A COMPANY LIMITED BY GUARANTEE)**  
**DETAILED ANALYSIS OF INCOME AND EXPENDITURE**  
**YEAR ENDED 31ST MARCH 2024**

**SUMMARY OF INCOME AND EXPENDITURE ACCOUNTS**

	<u>Page</u>	<u>2024</u> <u>£</u>	<u>2023</u> <u>£</u>
RESIDENTIAL SERVICE/LIVING SUPPORT	60	672,026	627,972
DAY ACTIVITIES AND WOODWORK	61	36,542	36,381
NURSERY PROJECT	62	(10,625)	4,183
CENTRAL SERVICES	63	(452,291)	(318,759)
LIONHEARTS PROJECTS	64	(48,513)	(35,085)
		<u>197,139</u>	<u>314,692</u>

**RECONCILIATION OF NET MOVEMENT IN FUNDS AND INCOME**  
**AND EXPENDITURE ACCOUNTS**

	<u>2024</u> <u>£</u>	<u>2023</u> <u>£</u>
INCOME AND EXPENDITURE ACCOUNT SURPLUS FOR YEAR	197,139	314,692
REVENUE GRANTS RELEASED TO INCOME AND EXPENDITURE ACCOUN	(72,805)	(100,232)
CAPITAL GRANTS RELEASED TO INCOME AND EXPENDITURE ACCOUNT	(31,849)	(33,116)
GRANTS RECEIVED	71,600	394,133
GRANTS TRANSFERRED	(22,500)	(6,000)
NET MOVEMENT IN FUNDS IN YEAR	<u>141,585</u>	<u>569,477</u>

**BLYTH STAR ENTERPRISES LIMITED**  
**(A COMPANY LIMITED BY GUARANTEE)**  
**DETAILED ANALYSIS OF INCOME AND EXPENDITURE**  
**YEAR ENDED 31ST MARCH 2024**

**RESIDENTIAL SERVICE/LIVING SUPPORT**

	<u>2024</u>		<u>2023</u>	
	<u>£</u>	<u>£</u>	<u>£</u>	<u>£</u>
<b><u>INCOME</u></b>				
<i>Provision of Client Services:</i>				
Care Management		1,574,763		1,461,389
Housing Benefit		223,689		135,497
<i>Other Income:</i>				
Donations and Gift Aid		-		-
Grant		30,205		37,500
Release from Grant Reserve		7,210		4,906
Students		-		40
		<u>1,835,867</u>		<u>1,639,332</u>
<b><u>EXPENDITURE</u></b>				
Wages	839,618		697,649	
Staff Pension	14,905		11,261	
Recruitment Expenses	1,067		700	
Activity Group	-		22	
Celebrations	1,422		1,000	
Cleaning Materials	3,691		2,804	
Social Training Escort	6,117		5,572	
Training	1,941		1,338	
Registered Landlord Fees	29,182		15,660	
Food Provisions	10,300		11,028	
Rent and Rates	33,861		25,562	
Heat and Light	6,472		17,352	
Motor and Travel Expenses	123,043		124,328	
Printing Postage and Stationery	2,481		3,495	
Telephone	9,588		7,529	
TV Costs	579		352	
Repairs and Renewals	28,169		23,615	
Equipment Hire and Maintenance	4,977		4,808	
Insurance	18,074		19,131	
Mortgage and Loan Interest	-		19,821	
Professional Fees	3,018		240	
Health and Safety	1,430		1,664	
Depreciation	23,866		16,206	
Loss on Disposal of Assets	-		169	
Sundry Expenses	40		54	
		<u>1,163,841</u>		<u>1,011,360</u>
<b>SURPLUS FOR YEAR</b>		<u>672,026</u>		<u>627,972</u>

**BLYTH STAR ENTERPRISES LIMITED**  
**(A COMPANY LIMITED BY GUARANTEE)**  
**DETAILED ANALYSIS OF INCOME AND EXPENDITURE**  
**YEAR ENDED 31ST MARCH 2024**

**DAY ACTIVITIES AND WOODWORK**

	<u>Woodwork</u>	<u>Day</u> <u>Activities</u>	<u>Total</u>	<u>2023</u>
	<u>£</u>	<u>£</u>	<u>£</u>	<u>£</u>
<b><u>TRADING INCOME</u></b>				
Sales	-	9,187	9,187	9,471
Cost of Sales	-	1,510	1,510	8,639
Net Trading (Loss)/Profit	-	7,677	7,677	832
<b><u>OTHER INCOME</u></b>				
Grants	-	39,600	39,600	33,170
Release from Grant Reserve	-	2,064	2,064	1,679
Donations	-	301	301	-
Sundry Income	-	94	94	250
Care Management	-	191,614	191,614	147,972
	-	241,350	241,350	183,903
<b><u>EXPENDITURE</u></b>				
Wages	-	153,163	153,163	96,410
Staff Pensions	-	2,788	2,788	1,421
Recruitment Expenses	-	126	126	243
Activity Group	-	11	11	-
Cleaning Materials	-	1,508	1,508	779
Protective Clothing	-	92	92	125
Training	-	302	302	666
Food and Provisions	-	7,021	7,021	4,694
Rent and Rates	-	22,672	22,672	22,508
Room Hire	-	145	145	-
Management Charge	-	-	-	1,635
Heat and Light	-	7,171	7,171	5,358
Motor and Travel Expenses	-	130	130	1,913
Printing Postage and Stationery	-	942	942	986
Telephone and Internet	-	1,821	1,821	1,738
TV Costs	-	359	359	347
Repairs and Renewals	-	1,685	1,685	2,314
Equipment Hire and Maintenance	-	880	880	1,001
Consultancy, Legal and Professional Fees	-	-	-	105
Insurance	-	922	922	2,985
Subscriptions	-	799	799	559
Health and Safety	-	207	207	17
Sundries	-	-	-	39
Depreciation	-	2,064	2,064	1,679
	-	204,808	204,808	147,522
<b>SURPLUS FOR YEAR</b>	-	36,542	36,542	36,381

**BLYTH STAR ENTERPRISES LIMITED**  
**(A COMPANY LIMITED BY GUARANTEE)**  
**DETAILED ANALYSIS OF INCOME AND EXPENDITURE**  
**YEAR ENDED 31ST MARCH 2024**

**STAKEFORD NURSERIES PROJECT**

	<u>2024</u>		<u>2023</u>	
	£	£	£	£
<b><u>INCOME</u></b>				
Sales		54,036		54,183
<b><u>COST OF SALES</u></b>				
Opening Stock	3,916		3,503	
Purchases	16,974		17,209	
	<u>20,890</u>		<u>20,712</u>	
Closing Stock	3,917		3,916	
		<u>16,973</u>		<u>16,796</u>
		37,063		37,387
<b><u>OTHER INCOME</u></b>				
Donations and Gift Aid	2		-	
Grants	-		28,341	
Release from Grant Reserve	15,877		18,728	
Profit on Sale of Assets	2,766		-	
Sundry Income	-		1,155	
Care Management	178,744		169,060	
		<u>197,389</u>		<u>217,284</u>
		234,452		254,671
<b><u>EXPENDITURE</u></b>				
Wages	157,661		168,662	
Staff Pension	3,404		2,842	
Recruitment Expenses	96		143	
Celebrations	205		234	
Activity Group	-		52	
Cleaning Materials	3,811		4,126	
Protective Clothing	1,237		1,385	
Training	2,052		1,248	
Food Provisions	554		847	
Rent and Rates	1,493		1,436	
Heat and Light	2,987		3,180	
Motor and Travel Expenses	15,187		16,982	
Advertising and Promotions	120		190	
Printing Postage and Stationery	398		298	
Telephone	1,435		1,585	
TV Costs	159		159	
Repairs and Renewals	14,753		5,740	
Equipment Hire and Maintenance	6,046		4,292	
Consultancy, Legal and Professional Fees	-		400	
Insurance	6,266		5,241	
Subscriptions	1,245		1,142	
Bank Charges & Interest	553		627	
Health and Safety	492		46	
Sundries	-		206	
Depreciation	17,650		21,610	
Irrecoverable Input Vat	7,273		7,815	
		<u>245,077</u>		<u>250,488</u>
<b>(DEFICIT)/SURPLUS FOR YEAR</b>		<u>(10,625)</u>		<u>4,183</u>

**BLYTH STAR ENTERPRISES LIMITED**  
**(A COMPANY LIMITED BY GUARANTEE)**  
**DETAILED ANALYSIS OF INCOME AND EXPENDITURE**  
**YEAR ENDED 31ST MARCH 2024**

**CENTRAL SERVICES**

	<u>2024</u>		<u>2023</u>	
	£	£	£	£
<b><u>OTHER INCOME</u></b>				
Management Charges		1,138		545
Grants		3,000		2,500
Release from Grant Reserve		6,698		7,803
Donations and Gift Aid		30,063		50,878
Miscellaneous Income		21		21
Bank Interest Received		6,696		1,254
		<u>47,616</u>		<u>63,001</u>
<b><u>EXPENDITURE</u></b>				
Wages	316,643		277,695	
Staff Pension	5,653		5,215	
Recruitment Expenses	49		25	
Cleaning Materials	20		14	
Protective Clothing	-		37	
Celebrations	1,357		4,698	
Training	688		393	
Entertaining	-		63	
Food and Provisions	47		86	
Rent, Rates and Water	12,396		12,396	
Room Hire	417		493	
Motor and Travel Expenses	2,917		1,598	
Partnership Working	250		300	
Advertising and Promotions	6,332		1,954	
Printing Postage and Stationery	3,411		2,237	
Telephone and Internet	2,016		2,165	
Audit and Accountancy	27,438		21,570	
Consultancy, Legal and Professional Fees	13,727		6,339	
Repairs and Renewals	6,662		4,061	
Equipment Hire and Maintenance	-		525	
Insurance	862		733	
Subscriptions	570		301	
Bank Charges and Interest	1,235		1,625	
Health and Safety	33		342	
Sundry Expenses	91		148	
Depreciation	16,787		23,876	
Authorised Push Payment Fraud	62,934		-	
Irrecoverable Input Vat	17,372		12,871	
		<u>499,907</u>		<u>381,760</u>
<b>DEFICIT FOR YEAR</b>		<u>(452,291)</u>		<u>(318,759)</u>

**BLYTH STAR ENTERPRISES LIMITED**  
**(A COMPANY LIMITED BY GUARANTEE)**  
**DETAILED ANALYSIS OF INCOME AND EXPENDITURE**  
**YEAR ENDED 31ST MARCH 2024**

**LIONHEARTS PROJECTS**

	<u>2024</u>		<u>2023</u>	
	<u>£</u>	<u>£</u>	<u>£</u>	<u>£</u>
<b><u>OTHER INCOME</u></b>				
Care Management		36,480		42,479
Grants		-		1,221
Donations		-		10
Sundry Income		30		-
		<u>36,510</u>		<u>43,710</u>
<b><u>EXPENDITURE</u></b>				
Wages	64,723		57,288	
Staff Pensions	1,012		807	
Recruitment Expenses	102		99	
Consumables	-		91	
Social Training Escort	1,000		348	
Training	-		134	
Food and Provisions	61		1,091	
Celebrations	-		36	
Activity Group	-		5,294	
Cleaning Materials	26		16	
Motor and Travelling	16,137		12,010	
Postage and Stationery	363		123	
Telephone	988		861	
Repairs and Renewals	28		435	
Equipment Hire and Maintenance	135		162	
Bad Debts	448		-	
		<u>85,023</u>		<u>78,795</u>
<b>(DEFICIT) / SURPLUS FOR YEAR</b>		<u><u>(48,513)</u></u>		<u><u>(35,085)</u></u>