



Trustees' Annual Report for the period

From	Period start date			To	Period end date		
	1 st	July	2020		30 th	June	2021

Section A Reference and administration details

Charity name Macclesfield Amateur Dramatic Society

Other names charity is known by MADS

Registered charity number (if any) 512929

Charity's principal address

The Little Theatre
 Lord Street
 Macclesfield, Cheshire
Postcode SK11 6SY

Names of the charity trustees who manage the charity

	Trustee name	Office (if any)	Dates acted if not for whole year	Name of person (or body) entitled to appoint trustee (if any)
1	Cameron Chandler	Chair	-	-
2	Francesca Dykes	Vice Chair	-	-
3	Roger Slater	Treasurer	-	-
4	Richard Shute	Hon. Secretary	-	-
5				
6				
7				
8				
9				
10				
11				
12				
13				
14				
15				
16				
17				
18				
19				
20				

Names of the trustees for the charity, if any, (for example, any custodian trustees)

Name	Dates acted if not for whole year
As above	

Names and addresses of advisers (Optional information)

Type of adviser	Name	Address
Independent Examiner	Karen Woodburn	10 Tytherington Park Road, Macclesfield SK10 2E kazwoo60@gmail.com

Name of chief executive or names of senior staff members (Optional information)

N/A

Section B Structure, governance and management

Description of the charity's trusts

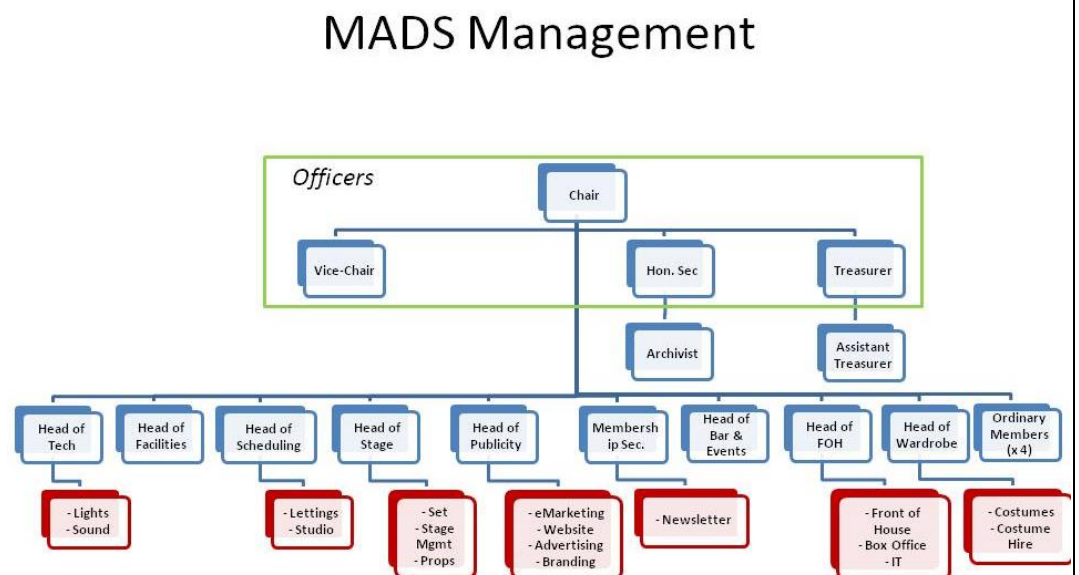
Type of governing document (eg. trust deed, constitution)	Constitution
How the charity is constituted (eg. trust, association, company)	Charitable Society
Trustee selection methods (eg. appointed by, elected by)	Elected by the members

Additional governance issues (Optional information)

You **may choose** to include additional information, where relevant, about:

- policies and procedures adopted for the induction and training of trustees;
- the charity's organisational structure and any wider network with which the charity works;
- relationship with any related parties;
- trustees' consideration of major risks and the system and procedures to manage them.

MADS structure comprises the members, and a Management Committee which consists of the charity's trustees (the Officers), the heads of the various sub-committees and four ordinary members:-



Details of how MADS is managed, how it recruits its trustees/officers are contained in the current Constitution document which is registered with the Charities Commission.

Section C Objectives and activities

Summary of the objects of the charity set out in its governing document

“The objects of the society shall be to foster, stimulate and promote the interests, knowledge, understanding and appreciation of the Arts in general and Dramatic Art in particular, among the inhabitants of the Borough of Macclesfield and surrounding areas within reasonable travelling distance therefrom.”

Summary of the main activities undertaken for the public benefit in relation to these objects (include within this section the statutory declaration that trustees have had regard to the guidance issued by the Charity Commission on public benefit)

- To put on plays and productions for the artistic and cultural benefit of the people of Macclesfield, East Cheshire, South Manchester, Derbyshire and North Staffordshire. These plays are produced and performed by MADS members and also by touring groups.
- To allow our Little Theatre to be used by other local dramatic, musical and performing arts societies and groups so enabling them to put on their productions, also for the cultural benefit of the people of Macclesfield and its environs.

The trustees declare that they have complied with their duty to have due regard to the commission's public benefit guidance when exercising any powers or duties to which the guidance is relevant.

Additional details of objectives and activities (Optional information)

You **may choose** to include further statements, where relevant, about:

- policy on grantmaking;
- policy programme related investment;
- contribution made by volunteers.

- MADS policy is not to make grants.
- Any investment that MADS makes is focused solely on furthering the Society's Objects and to ensure the upkeep and survival of its premises (a Grade II listed building).
- All MADS members are volunteers. Their contributions are summarised in Section D.

Summary of the main achievements of the charity during the year

In common with the whole of the UK, MADS has been dramatically affected by the SARS-Cov2, COVID-19 pandemic and for only the second time in its history, MADS has been closed with no productions or audience for over a year.

The following is a brief summary setting out what MADS has, despite the global situation, been able to achieve this year to carry out its charitable purposes for the public benefit.

MADS 2020-2021 Season Summary

- Membership for the year stands at 115 of which: Adults, 97; Juniors/Students, 8; and Life Members, 10. New members for 20/21 season – 4.
- Although there were no main stage or studio productions, there was a pleasing number of online play readings and thanks go to Fran Dykes for launching these, and to everyone who organised subsequent sessions, read in a part, wrote a script for inclusion, or participated in some other fashion.
- We were also able to join with Macclesfield Rugby Union Football Club to provide a highly entering scare-fest – “Priory Park Horror” - which, in addition to bringing in some much appreciated income, was tremendous fun to be involved with, and something we will hopefully be looking to repeat this year.
- The foyer is undergoing a total renovation to bring it up to date and provide a more welcoming atmosphere to the theatre.
- A compendium of poetry – “It Could Be Verse” - has been produced by our ever creative members.
- The wardrobe team got to work making scrubs for the NHS.

We now look forward, Covid-permitting, to reopening and to our 2021-2022 season with five amazing plays, commencing in September with *Deathtrap* by Ira Levin.

Section E

Financial review

Brief statement of the charity's policy on reserves

It is MADS policy to do all in its power not to let its financial balance (reserve liquidity) fall below £5000.

Details of any funds materially in deficit

N/A

Further financial review details (Optional information)

You **may choose** to include additional information, where relevant about:

- the charity's principal sources of funds (including any fundraising);
- how expenditure has supported the key objectives of the charity;
- investment policy and objectives including any ethical investment policy adopted.

Despite the pandemic, MADS continues to maintain a healthy financial situation. Points of note from this season (ending June 30th 2021) include:

1. Operating Profit

It has been an even more unusual year than last, in which there were no in-house MADS Productions. The only Production income (£1,415) came from MADS participation in the Macclesfield Rugby Club Halloween Event. Fortunately, income was sustained by the conjunction of Government Grants totalling £19,370 and lettings of the Theatre to Macclesfield College totalling £21,000. This income stream has allowed us to proceed with a planned refurbishment of the Theatre Foyer, including windows repairs and removal of the false ceiling, porch, and Box Office. The result is a more spacious Foyer with upgraded heating, lighting and electrics and a new Box Office desk. Currently incomplete, this work has cost £8,209 to the Year End and is expected to cost a further £16K in the new Season. Although there was only a minor capitalisation of costs this year (£864), the heavy capitalisation of the new Toilets last year, with accompanying straight-line depreciation, currently running at £13,147 per year, added to total overheads not much below a normal year, has resulted in an operating profit of £5,195, down from £40,298 the last year.

2. Balance Sheet

As stated above there was only a minor capitalisation this year, so Asset Costs remained substantially the same and depreciation likewise. The Current Assets consisted mainly of the Bank Balances totalling £31,956 at the Year End. There were smaller amounts relating to stock, floats and prepayments giving total Current Assets of £39,427. Current Liabilities were mainly credits (NB: Sage posts customer credits as negative amounts on the Liabilities side) owing from RBS and PPL/PRS plus accrual of July Energy Costs. The total was -£2163 giving, with no long-term liabilities, a Net Current Assets Total of £37,262 (Liquidity) and Total Assets less Total Liabilities (Net Worth) of £206,250. The Balancing Total of Reserves plus This Year's Net Profit was equal to the Net Worth, as required by double-entry accounting.

3. Other accounts

There having been no in-house plays or events, there were no play, event and let Profit and Loss Accounts and there was no Bar activity other than a small write-off of out-of-date stock. The income we received from the sale of honey from Taffy's bees was much appreciated.

4. Projected Expenditure

The monthly cash flow projection, incorporating all known income and outgoings, has now become a regular feature of financial reporting in MADS and the Projection at the Year End shows that we remain above the £5K safety limit until February next Year. This takes no account of costs or income from Plays up to that point, but it is hoped that by then we will be in receipt of Letting and Bar Income from two Pantomimes.

Section F

Other optional information


--

Section G

Declaration

The trustees declare that they have approved the trustees' report above.

Signed on behalf of the charity's trustees

Signature(s)		
Full name(s)	Richard Shute	
Position (eg Secretary, Chair, etc)	Hon. Secretary	

Date

Macclesfield Amateur Dramatic Society

Accounts

Year ended 30 June 2021

MACCLESFIELD AMATEUR DRAMATIC SOCIETY

INDEPENDENT EXAMINER'S REPORT YEAR ENDED 30 JUNE 2021

Report to the Trustees/Members of Macclesfield Amateur Dramatic Society on the accounts for the Year ended 30 June 2021, Registered Charity number 512929, set out on pages 1 to 4

I report to the trustees on my examination of the accounts for the above charity (the Trust) for the Year ended 30 June 2021.

Responsibilities and basis for the report

As the charity trustees of the Trust, you are responsible for the preparation of the accounts in accordance with the requirements of the Charities Act 2011 (The Act)

I report in respect of my examination of the Trust's accounts carried out under section 145 of the 2011 Act and in carrying out my examination, I have followed the applicable Directions given by the Charity Commission under section 145(5)(b) of the Act.

Independent Examiner's Report

I have completed my examination. I confirm that no material matters have come to my attention in connection with the examination which give me cause to believe that in, any material respect:

* accounting records were not kept in accordance with section 130 of the Act or

* the accounts do not accord with the accounting records.

I have no concerns and have come across no matters in connection with the examination to which attention should be drawn in order to enable a proper understanding of the

Signed *KL Woodburn*

Name Mrs Karen Lesley Woodburn

Dated 19-Jan-22

Address 10 Tytherington Park Road
Macclesfield
Cheshire
SK10 2EL

Macclesfield Amateur Dramatic Society

PROFIT AND LOSS ACCOUNT FINANCIAL YEAR 2020/2021

Production Income		Explanatory Notes
<u>30th June 20</u>	<u>30th June 21</u>	
147	1415	Share of Halloween Event Sales
80	30	
2877	0	
2347	0	
12494	0	
549	0	
200	0	
672	0	
471	0	
19837	1445	
Production Costs		
390	860	
940	160	Scripts for Play Selection
3959	100	Silk Dresses for Wardrobe
1729	0	
0	0	
1658	0	
304	0	
986	0	
1467	0	
16	0	
756	0	
875	0	
65	0	
34	0	

70	Studio Play Costs	0
390	Cleaning - MADS Plays	0
1084	On-line Booking Fees - Main	0
344	PRS for MADS Plays	0

15067 Total Production costs

1120

4770 Productions Profit

325

Other Income

2455	Members Subscriptions	25
43909	Grants/Donations	19638
24	Amazon Smile	56
8450	Theatre Lettings	21000
129	Bank Interest	2
0	Other Income	340
6972	Bar Profit/(Loss)	-284
78	Rent of Costumes/Props	0
90	Hire/Sale of Furniture	0
2958	Gift Aid	0
-53	Profit/Loss on Soc & Cat Events	0

Jim Lunney Sub
Government Grants (19,370), Taffy Davies Honey Sales(250), Nostrad:
Macclesfield College (4 Lets)
MADS Poetry Book Prepayments held against expected Printing Costs

65011 Total Other Income

40778

Overheads

35	Ground Rent	35
1382	Water/Wastewater	1087
5874	Insurance premiums	6680
2509	Gas	4
60	Combined Energy Charges	2350
206	Licences	518

Final Payment to Npower
Electricity and Gas Charges
Sage Licence Upgrade and Premises Licence

35	Subscriptions	35	LTG Subscription
646	Telephones	1156	Box Office VOIP Telephone and Broadband
252	Management Expenses	175	Flowers, Donations and Plaque Engraving
1427	Repairs/Maintenance	2111	Fire Extinguisher and Fire Panel and Boilers Servicing, Paint and Other
0	Repairs/Maintenance Non-recurring	8209	Foyer Refurbishment Costs
684	Cleaning	187	Cleaning Materials
0	Data Protection Fees	35	
411	Computer expenses	38	Sage Monthly Fee
146	Affiliation Fees	70	CTG Affiliation
0	Covid protection costs	71	Costs from last AGM
13061	Depreciation	13147	see Depreciation Note for full explanation
2058	Electricity	0	
217	Club Night Costs	0	
380	Training	0	
100	Donations	0	
29483	Total Overheads	35908	
35528	Non-Production Profit	4870	
40298	Net Profit	5195	

amus (18)

· Repairs

Macclesfield Amateur Dramatic Society

BALANCE SHEET FOR FINANCIAL YEAR 2020/2021

	<u>£</u>	£	Explanatory Notes
Fixed Assets			
Tangible Assets	168988		Total Net Book Value at 30.6.21 see Depreciation note for full explanation
		168988	
Current Assets			
Stock	1225		Bar Stock and Door Fobs
Debtors	6045		
Current Account	500		
Deposit Account	31456		
Petty Cash and Floats	200		Petty Cash, Box Office, FoH and Bar Floats
		39427	
Current Liabilities			
Short Term Creditors	2163		
		2163	plus Energy Costs for June accrued (276.00) minus Key Fob Deposits owed (245.00)
Current Assets less Current Liabilities:		37262	
Total Assets less Current Liabilities:		206250	
Long Term Liabilities		0	
Total Assets less Total Liabilities:		206250	The Net Worth of MADS as calculated from the Balance Sheet
Capital & Reserves			
Reserves	201055		Accumulated P&Ls over the Years
P & L Account	5195		This years profit
		206250	The Net Worth of MADS as calculated from the accumulated Profit and Loss

Macclesfield Amateur Dramatic Society

NOTES TO BALANCE SHEET FINANCIAL YEAR 2020/2021

Note	1 Fixed Assets Depreciation	Property	Equipment	Furniture & Fixtures	Total
		£	£	£	£
	Asset Cost at July 2020 b/f	86,620	29,848	100,760	217,228
	Depreciation b/f		22,088	13,869	35,957
	Net Book Value at July 2020	86,620	7,760	86,891	181,271
	Additions in 2020/21	0	864	0	864
	Asset Cost at June 2021 c/f	86,620	30,712	100,760	218,092
	Depreciation for Year 2020/21		3,071	10076	13,147 P&L Depreciation
	Total Depreciation c/f		25,159	23,945	49,104
	Net Book Value at June 2021	86,620	5,553	76,815	168,988 Tangible Assets
	Depreciation is calculated at 10% (straight Line)				
	Property is not depreciated				
Note	2 Debtors and Prepayments				
	Gift Aid 2019	650			
	Prepayments Royalties in Advance	2878			
	Prepayments Scripts	323			
	Prepayments Insurance Premiums	1371			
	Prepayments Advertising (MMM)	222			
	Prepayments Staging (MMM)	5			
	Credit to RBS Card for Bank Charges in error	30			

Credit to PPL/PRS Account for Overcharge of PRS	290
Accrual of Energy Costs for June 21	276
	6,045

Note 3 Creditors - Amounts falling due in one year

Key fob Deposit Money	245
Prepayments Season Ticket Sales	1,918
	2,163

Bar Account

2020	2021	2020	2021	
£	£	£	£	
2216 Opening Stock	1257	8770 Sales	0	
7988 Purchases*	0	7277 Card Reader Sale	0	
128 Card Reader Fees	0	1257 Closing Stock	973	
6972 Loss for year	-284			
17,304	973	17,304	973	
Profit per B/Sheet	0	Bar Profit b/f	0	0.00
				% Bar Profit

Stock written off as out of date £284

Macclesfield Amateur Dramatic Society

Accounts

Year ended 30 June 2021

MACCLESFIELD AMATEUR DRAMATIC SOCIETY

INDEPENDENT EXAMINER'S REPORT YEAR ENDED 30 JUNE 2021

Report to the Trustees/Members of Macclesfield Amateur Dramatic Society on the accounts for the Year ended 30 June 2021, Registered Charity number 512929, set out on pages 1 to 4

I report to the trustees on my examination of the accounts for the above charity (the Trust) for the Year ended 30 June 2021.

Responsibilities and basis for the report

As the charity trustees of the Trust, you are responsible for the preparation of the accounts in accordance with the requirements of the Charities Act 2011 (The Act)

I report in respect of my examination of the Trust's accounts carried out under section 145 of the 2011 Act and in carrying out my examination, I have followed the applicable Directions given by the Charity Commission under section 145(5)(b) of the Act.

Independent Examiner's Report

I have completed my examination. I confirm that no material matters have come to my attention in connection with the examination which give me cause to believe that in, any material respect:

* accounting records were not kept in accordance with section 130 of the Act or

* the accounts do not accord with the accounting records.

I have no concerns and have come across no matters in connection with the examination to which attention should be drawn in order to enable a proper understanding of the

Signed *KL Woodburn*

Name Mrs Karen Lesley Woodburn

Dated 19-Jan-22

Address 10 Tytherington Park Road
Macclesfield
Cheshire
SK10 2EL

Macclesfield Amateur Dramatic Society

PROFIT AND LOSS ACCOUNT FINANCIAL YEAR 2020/2021

<u>30th June 20</u>	Production Income	<u>30th June 21</u>	Explanatory Notes
147	Studio Plays In-house Sales	1415	Share of Halloween Event Sales
80	Gift Voucher Sales	30	
2877	Season Ticket Sales	0	
2347	Main Plays In-house Sales	0	
12494	Main Plays On-line Sales	0	
549	Box Office Card Reader Net Sales	0	
200	Sales of Program Ads	0	
672	Sales of Programmes	0	
471	Sales of Tea/Coffee	0	
19837	Total Production Income	1445	
	Production Costs		
390	Cleaning - Lettings	860	
940	Scripts	160	Scripts for Play Selection
3959	Wardrobe	100	Silk Dresses for Wardrobe
1729	Main Plays Royalties	0	
0	Studio Plays Royalties	0	
1658	Staging	0	
304	Travel	0	
986	Props	0	
1467	Printing	0	
16	Sound and Lighting	0	
756	Publicity	0	
875	Adjudications	0	
65	Conference Fees	0	
34	Photographs	0	

70	Studio Play Costs	0
390	Cleaning - MADS Plays	0
1084	On-line Booking Fees - Main	0
344	PRS for MADS Plays	0

15067 Total Production costs

1120

4770 Productions Profit

325

Other Income

2455	Members Subscriptions	25
43909	Grants/Donations	19638
24	Amazon Smile	56
8450	Theatre Lettings	21000
129	Bank Interest	2
0	Other Income	340
6972	Bar Profit/(Loss)	-284
78	Rent of Costumes/Props	0
90	Hire/Sale of Furniture	0
2958	Gift Aid	0
-53	Profit/Loss on Soc & Cat Events	0

Jim Lunney Sub
Government Grants (19,370), Taffy Davies Honey Sales(250), Nostrad:
Macclesfield College (4 Lets)
MADS Poetry Book Prepayments held against expected Printing Costs

65011 Total Other Income

40778

Overheads

35	Ground Rent	35
1382	Water/Wastewater	1087
5874	Insurance premiums	6680
2509	Gas	4
60	Combined Energy Charges	2350
206	Licences	518

Final Payment to Npower
Electricity and Gas Charges
Sage Licence Upgrade and Premises Licence

35	Subscriptions	35	LTG Subscription
646	Telephones	1156	Box Office VOIP Telephone and Broadband
252	Management Expenses	175	Flowers, Donations and Plaque Engraving
1427	Repairs/Maintenance	2111	Fire Extinguisher and Fire Panel and Boilers Servicing, Paint and Other
0	Repairs/Maintenance Non-recurring	8209	Foyer Refurbishment Costs
684	Cleaning	187	Cleaning Materials
0	Data Protection Fees	35	
411	Computer expenses	38	Sage Monthly Fee
146	Affiliation Fees	70	CTG Affiliation
0	Covid protection costs	71	Costs from last AGM
13061	Depreciation	13147	see Depreciation Note for full explanation
2058	Electricity	0	
217	Club Night Costs	0	
380	Training	0	
100	Donations	0	
29483	Total Overheads	35908	
35528	Non-Production Profit	4870	
40298	Net Profit	5195	

amus (18)

· Repairs

Macclesfield Amateur Dramatic Society

BALANCE SHEET FOR FINANCIAL YEAR 2020/2021

	<u>£</u>	£	Explanatory Notes
Fixed Assets			
Tangible Assets	168988		Total Net Book Value at 30.6.21 see Depreciation note for full explanation
		168988	
Current Assets			
Stock	1225		Bar Stock and Door Fobs
Debtors	6045		
Current Account	500		
Deposit Account	31456		
Petty Cash and Floats	200		Petty Cash, Box Office, FoH and Bar Floats
		39427	
Current Liabilities			
Short Term Creditors	2163		
		2163	plus Energy Costs for June accrued (276.00) minus Key Fob Deposits owed (245.00)
Current Assets less Current Liabilities:		37262	
Total Assets less Current Liabilities:		206250	
Long Term Liabilities		0	
Total Assets less Total Liabilities:		206250	The Net Worth of MADS as calculated from the Balance Sheet
Capital & Reserves			
Reserves	201055		Accumulated P&Ls over the Years
P & L Account	5195		This years profit
		206250	The Net Worth of MADS as calculated from the accumulated Profit and Loss

Macclesfield Amateur Dramatic Society

NOTES TO BALANCE SHEET FINANCIAL YEAR 2020/2021

Note	1 Fixed Assets Depreciation	Property	Equipment	Furniture & Fixtures	Total
		£	£	£	£
	Asset Cost at July 2020 b/f	86,620	29,848	100,760	217,228
	Depreciation b/f		22,088	13,869	35,957
	Net Book Value at July 2020	86,620	7,760	86,891	181,271
	Additions in 2020/21	0	864	0	864
	Asset Cost at June 2021 c/f	86,620	30,712	100,760	218,092
	Depreciation for Year 2020/21		3,071	10076	13,147 P&L Depreciation
	Total Depreciation c/f		25,159	23,945	49,104
	Net Book Value at June 2021	86,620	5,553	76,815	168,988 Tangible Assets
	Depreciation is calculated at 10% (straight Line)				
	Property is not depreciated				
Note	2 Debtors and Prepayments				
	Gift Aid 2019	650			
	Prepayments Royalties in Advance	2878			
	Prepayments Scripts	323			
	Prepayments Insurance Premiums	1371			
	Prepayments Advertising (MMM)	222			
	Prepayments Staging (MMM)	5			
	Credit to RBS Card for Bank Charges in error	30			

Credit to PPL/PRS Account for Overcharge of PRS	290
Accrual of Energy Costs for June 21	276
	6,045

Note 3 Creditors - Amounts falling due in one year

Key fob Deposit Money	245
Prepayments Season Ticket Sales	1,918
	2,163

Bar Account

2020	2021	2020	2021	
£	£	£	£	
2216 Opening Stock	1257	8770 Sales	0	
7988 Purchases*	0	7277 Card Reader Sale	0	
128 Card Reader Fees	0	1257 Closing Stock	973	
6972 Loss for year	-284			
17,304	973	17,304	973	
Profit per B/Sheet	0	Bar Profit b/f	0	0.00
				% Bar Profit

Stock written off as out of date £284