



Warwickshire Scout Council

Trustees Report for the year ended 31st March 2023

Objectives and Activities

Our aim is to contribute to the development of young people in achieving their full physical, intellectual, social, and spiritual potentials, as individuals, as responsible citizens and as members of their local, national, and international communities. Warwickshire Scout Council carries out this purpose across the county of Warwickshire, arranged in to eight Districts and around 90 local groups and units.

Our major activities, as a County, for young people this year included the quadrennial Get In camp, Warwickshire Gang Show, Gang Show 90th anniversary event in London, the operation of our Activity Centre and organisation of several hiking events. Get In camp saw our largest ever attendance, over 3,500 young people, and was a great success. The gang shows involved over 140 young people performing to audiences totalling well over 3,000, mainly other young scouting members. Many other activities and events are delivered by our Districts and local group through the federated structures.

In addition, we continued to provide training and development to volunteer leaders throughout the County. This enabled the opening of new sections, particularly for the new Squirrels age group (6-8 year olds).

The annual census on 31st January 2023 showed youth membership had grown by 6% to 5,412 and adult volunteer membership had also grown by 11% to 1,723. The growth in volunteer leaders is encouraging as it enables new sections to develop and provide places to young people that may be on a waiting list.

Warwickshire Scouts has no paid employees, and all our charitable activities are managed and governed by volunteers. The vast majority of activities are also delivered by volunteers, but specialist providers are used to augment the offering.

Core Strategy

Warwickshire Scout Council supports the strategies of The Scout Association. "Skills for Life" is the Scout Association's 2018 – 2025 strategy where we continue to grow, become more inclusive, to be shaped by young people and to make a bigger impact in our communities. Warwickshire Scout Council adopts the strategic aims of the Scout Association, upon which we build on our local plans

Our Mission

Scouting actively engages and supports young people in their personal development, empowering them to make a positive contribution to society.

Our Values

We act with care, respect, integrity, cooperation, exploring our own and others' beliefs.

Our Goals

Growth

Inclusivity

Youth Shaped

Community Impact

To support the achievement of these Goals, we will focus on three pillars of work:

People

More, well trained, better supported, and motivated adult volunteers, and more young people from diverse backgrounds.

Perception

Scouting is understood, more visible, trusted, respected, and widely seen as playing a key role in society today.

Programme

A fun, enjoyable, high-quality programme consistently delivered and supported by simple (digital) tools.

Achievements and Performance

The delivery of a broad and interesting programme of activities has attracted new members and provided all members with personal development opportunities to grow their Skills for Life.

Overall we have continued to grow the number of members, and increased the diversity of our membership by opening new sections and provision. We continue to be an active part of our community, and shaped by young people – including having 18-25 years old as part of our management and governance team.

Future Plans

In conjunction with The Scout Association, we have embarked on a transformation programme. We want to make volunteering with Scouts more fun, so that we can attract more volunteers and our current volunteers will want stay. We have been listening to our volunteers, young people and we've identified three key areas for change:

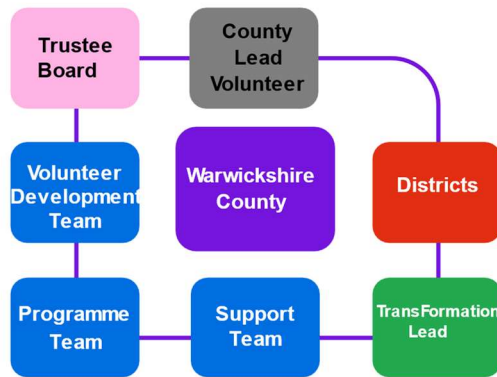
Providing a warmer welcome for everyone

Delivering a more engaging learning experience

Simplifying how we volunteer together

All of which will be supported by easy-to-use digital tools.

From April 2023, the country team will be restructured aligned to the new Transformation Programme, with the structure as follows. This change also follows the appointment of a new County Commissioner, Paul Wakeley in April 2023.

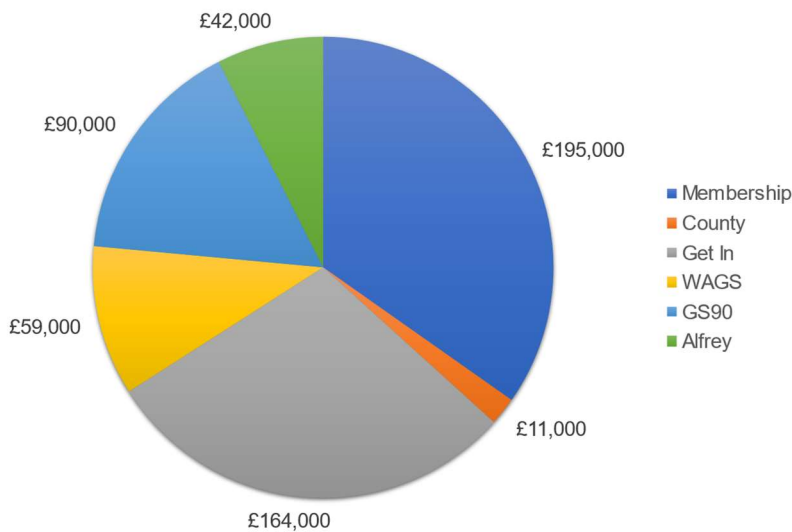


As transformation proceeds our core strategy will be reviewed with The Scout Association to continue to deliver our charitable objectives.

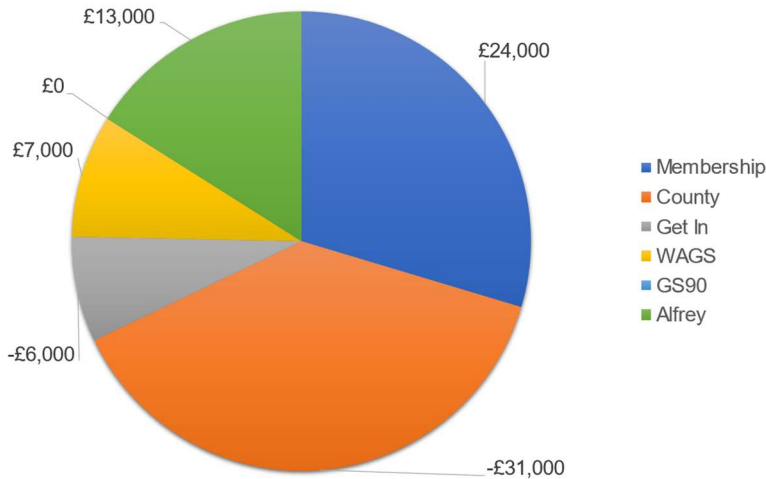
Financial Review

Activity fully returned to normal this year following the lifting of all pandemic restrictions. Income for the year increased significantly to £561.3K as our Activity Centre re-opened, adult and young leader trainer increased, the County Gang Show returned together with a 90th anniversary Gang Show in London and we were able to run our quadrennial Get In camp. Expenditure increased to £554.0K resulting in net income of £7.3K.

Gross Income 2022/23 Total £561K



Net Income 2022/23 Total £7K



Our reserves policy is to hold sufficient resources to continue the charitable activities of the County should income or fund-raising activities fall short of expectations and to enable the County to underwrite its planned programme of activities, including large scale events. The Trustee Board has reviewed the impact of recent economic, social, and financial pressures on its capability to deliver education and development opportunities to young people and has maintained the level of Designated Reserves.

The County holds the following Designated Reserves:

9 months Running Costs for events and regular activities	27,000
Potential uninsured loss on large events	22,000
County Camp Site 50% of annual Operating Revenues	25,000
County Camp Site Restoration Reserve for end of Lease	25,000
Warwickshire Gang Show 50% of annual Operating Revenues	24,000
Other specific future events	5,328
Total	128,328

The County currently holds total reserves more than this level and continues to seek to develop camp and activity centre opportunities to use the excess reserves. However, the Trustee Board considers it should also plan an annual operational deficit in its operating budget to manage the excess amount. The Trustee Board have developed budgets and strategic plans to reduce the level of excess reserves over the medium term. These plans are closely aligned to supporting the outcomes set out within the County's overall Strategic Plan.

None of the funds managed are in deficit and no assets are held by the Charity in the capacity of custodian trustee.

The County held total funds of some £463,000 at year end and has adopted a low-risk investment strategy. All funds are held in current accounts and low risk interest bearing accounts, using only FSCS protected accounts.

With the County Treasurer, the Trustees regularly monitor levels of bank balances and interest rates to ensure the County is receiving best value and income from its banking arrangements.

The risks that would significantly impact the finances of the County are primarily a reduction in the membership numbers and the poor management of large events. Management and decision making processes are in place to minimise these risks and have been operating effectively for many years.

Structure, Governance and Management

The Warwickshire Scout Council is a trust established under the rules which are common to all County Scout Councils as prescribed within the Policy, Organisation and Rules (POR) of the Scout Association. Trustees are recruited and appointed in accordance with the relevant sections of the POR. Before April 2023, the Trustee Board was known as the Executive Committee. As defined in our constitution, The Trustee Board is a team of volunteers who work together, as charity Trustees to make sure the Scouts is run safely and legally in Warwickshire. At the heart of their role is a focus on strategy, performance and assurance.

Warwickshire Scout Council is registered with the Charities Commission, number 506367.

The Trustees have in place systems and internal controls that are designed to provide reasonable reassurance against material mismanagement or loss. These include two signatories/authorisers for all payments, comprehensive insurance policies to ensure that insurable risks are covered and regular reports and risk assessments by those seeking to /or running events or activities on behalf of the Scout County.

The Trustees have had due regard to the guidance published by the Charity Commission on public benefit and are of the opinion that the Charity meets the Charity Commission public benefit criteria under both the advancement of education and the advancement of citizenship/community development. New Trustees undertake training as detailed by the Scout Association including dedicated e-learning for Trustees, and safety and safeguarding training.

The Charity has no principal office. The public address for correspondence is The Oaklands, Wainfield Lane, Gwehelog, Usk, Monmouthshire NP15 1RT.

The day-to-day operations of the charity are organised and delivered by the County Commissioner and a small team of Deputy County Commissioners. Strategic and governance matters are agreed with the Trustee Board.

Trustees

Andy Walker	Chair
Nigel Hailey	County Commissioner
Philip Revill	Treasurer
Fiona Mitchell	Secretary – Resigned September 2022
Michelle Brierley	Secretary – Appointed September 2022
Paul Wakeley	
Matt Friar	
Ruth Slaney	
Jenny Tyreman	Resigned September 2022
Katrina Collie	
Tony Guy	
Brian Friar	
David Colledge	
Paul Blackmore	
Paul Skipper	
Steven Wright	

Michael Dean

Mark Earles

Yvonne Paige-Stimson

Laurence Aston

Stephen Cross

Appointed in March 2022, Resigned in September 2022

Resigned in March 2022

Resigned in January 2023

All trustees served for the full year unless stated otherwise above.

Reference and Administrative

Banking services are provided by:-

CAF Bank, Kings Hill, West Malling
Barclays Bank, Tamworth, Staffordshire
Shawbrook Bank, Queens Court, Manchester
Lloyds Bank, Leamington Spa, Warwickshire
Virgin Money, Bothwell Street, Glasgow

External examiners are Michael Harwood & Co Chartered Accountants, Greville House, 10 Jury Street, Warwick.

Declarations

The trustees declare that they have approved the trustee's report above.

Signed on behalf of the trustees.

Signature



Full Name

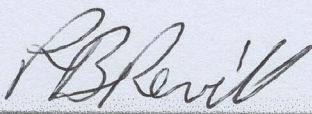
THOMAS ANDREW WALKER

Position

COUNTY CHAIR

Date

16/11/24



PHILIP BERNARD REVILL

COUNTY TREASURER

Independent Examiner's Report to the Trustees of

Warwickshire Scout Council

I report to the charity trustees on my examination of the accounts of the charity for the year ended 31st March 2023.

Responsibilities and basis of report

As the charity's trustees you are responsible for the preparation of the accounts in accordance with the requirements of the Charities Act 2011 ('the Act').

I report in respect of my examination of the charity's accounts carried out under section 145 of the Act and in carrying out my examination I have followed all the applicable Directions given by the Charity Commission under section 145(5)(b) of the Act.

Independent examiner's statement

Since the charity's gross income exceeded £250,000 your examiner must be a member of a body listed in section 145 of the Act. I confirm that I am qualified to undertake the examination because I am a member of the Institute of Chartered Accountants in England and Wales, which is one of the listed bodies.

I have completed my examination. I confirm that no material matters have come to my attention in connection with the examination giving me cause to believe that in any material respect:

1. accounting records were not kept in respect of the charity as required by section 130 of the Act; or
2. the accounts do not accord with those records; or
3. the accounts do not comply with the applicable requirements concerning the form and content of accounts set out in the Charities (Accounts and Reports) Regulations 2008 other than any requirement that the accounts give a 'true and fair view' which is not a matter considered as part of an independent examination.

I have no concerns and have come across no other matters in connection with the examination to which attention should be drawn in this report in order to enable a proper understanding of the accounts to be reached.



Mark Harwood FCA BFP FMAAT

Michael Harwood & Co
Chartered Accountants
Greville House
10 Jury Street
Warwick
CV34 4EW

Date: 19th January 2024



Warwickshire Scout Council			Charity No (if any)	506367 (England)
Annual accounts for the period				
Period start date	01/04/2022	To	Period end date	31/03/2023

Section A Statement of financial activities

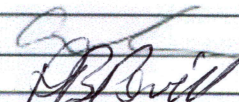
Recommended categories by activity	Guidance Notes	Unrestricted funds	Restricted income funds	Endowment funds	Total funds	Prior year funds
		£ F01	£ F02	£ F03	£ F04	£ F05
Incoming resources (Note 3)						
Income and endowments from:						
Donations and legacies	S01	14,988	-	-	14,988	7,498
Charitable activities	S02	545,438	-	-	545,438	263,792
Other trading activities	S03	-	-	-	-	-
Investments	S04	867	-	-	867	477
Separate material item of income	S05	-	-	-	-	-
Other	S06	-	-	-	-	-
Total	S07	561,294	-	-	561,294	271,767
Resources expended (Note 6)						
Expenditure on:						
Raising funds	S08	-	-	-	-	-
Charitable activities	S09	554,019	-	-	554,019	285,469
Separate material item of expense	S10	-	-	-	-	-
Other	S11	-	-	-	-	-
Total	S12	554,019	-	-	554,019	285,469
Net income/(expenditure) before investment gains/(losses)						
	S13	7,275	-	-	7,275	- 13,701
Net gains/(losses) on investments	S14	-	-	-	-	-
Net income/(expenditure)	S15	7,275	-	-	7,275	- 13,701
Extraordinary items						
	S16	-	-	-	-	-
Transfers between funds						
	S17	-	-	-	-	-
Other recognised gains/(losses):						
Gains and losses on revaluation of fixed assets for the charity's own use	S18	-	-	-	-	-
Other gains/(losses)	S19	-	-	-	-	-
Net movement in funds	S20	7,275	-	-	7,275	- 13,701
Reconciliation of funds:						
Total funds brought forward	S21	303,695	-	-	303,695	317,396
Total funds carried forward	S22	310,970	-	-	310,970	303,695

Section B

Balance sheet

		Guidance Notes	Unrestricted funds	Restricted income funds	Endowment funds	Total this year	Total last year
			£	£	£	£	£
			F01	F02	F03	F04	F05
Fixed assets							
Intangible assets	(Note 15)	B01	-	-	-	-	-
Tangible assets	(Note 14)	B02	9,255	-	-	9,255	17,624
Heritage assets	(Note 16)	B03	-	-	-	-	-
Investments	(Note 17)	B04	-	-	-	-	-
Total fixed assets		B05	9,255	-	-	9,255	17,624
Current assets							
Stocks	(Note 18)	B06	2,351	-	-	2,351	3,762
Debtors	(Note 19)	B07	192,201	-	-	192,201	80,360
Investments	(Note 17.4)	B08	-	-	-	-	-
Cash at bank and in hand	(Note 24)	B09	463,466	-	-	463,466	485,446
Total current assets		B10	658,018	-	-	658,018	569,568
Creditors: amounts falling due within one year							
	(Note 20)	B11	356,303	-	-	356,303	261,979
Net current assets/(liabilities)		B12	301,714	-	-	301,714	307,589
Total assets less current liabilities		B13	310,970	-	-	310,970	325,213
Creditors: amounts falling due after one year							
	(Note 20)	B14	-	-	-	-	21,519
Provisions for liabilities		B15	-	-	-	-	-
Total net assets or liabilities		B16	310,970	-	-	310,970	303,695
Funds of the Charity							
Endowment funds	(Note 27)	B17	-	-	-	-	-
Restricted income funds	(Note 27)	B18	-	-	-	-	-
Unrestricted funds		B19	310,970	-	-	310,970	303,695
Revaluation reserve		B20	-	-	-	-	-
Total funds		B21	310,970	-	-	310,970	303,695

Signed by one or two trustees on behalf of all the trustees

Signature	Print Name	Date of approval dd/mm/yyyy
	P. B. REVILL	16/1/24
	P. B. REVILL	16/1/24

Section C**Cash Flow Statement**

	Year to		31/03/2023		31/03/2022	
			£	£	£	£
Cash Flow from Operating Activities						
Net Cash from Operating Activities			-22,848		69,344	
Cash Flow from Investing Activities						
Purchase of Fixed Assets		0		-1,435		
Interest Received		867		477		
Net Cash from Investing Activities			867		-958	
Net Increase/(Decrease) in cash and cash equivalents			-21,981		68,386	
Cash and Cash Equivalents at start of year			485,446		417,060	
Cash and Cash Equivalents at end of year			463,466		485,446	

Reconciliation of Net Income/(Expenditure) to Net Cash from Operating Activities

Net Income/(Expenditure) for the Year		7,275		-13,701
Interest Received	-867		-477	
Depreciation	8,369		6,027	
Decrease/(Increase) in Debtors	-111,841		-69,945	
Decrease/(Increase) in Stock	1,411		-790	
(Decrease)/Increase in Creditors	72,805		148,230	
		-30,123		83,046
Net Cash from Operating Activities		-22,848		69,344

Note 1 Basis of preparation

This section should be completed by all charities.

1.1 Basis of accounting

These accounts have been prepared under the historical cost convention with items recognised at cost or transaction value unless otherwise stated in the relevant note(s) to these accounts.

The accounts have been prepared in accordance with:

- and with* the Statement of Recommended Practice: Accounting and Reporting by Charities preparing their accounts in accordance with the Financial Reporting Standard applicable in the UK and Republic of Ireland (FRS 102) issued in October 2019.
- and with* the Financial Reporting Standard applicable in the United Kingdom and Republic of Ireland (FRS 102)
- and with the Charities Act 2011.

The charity constitutes a public benefit entity as defined by FRS 102.*

* -Tick as appropriate

The accounts do not include a cash flow statement on the grounds that it is applying FRS102 Section 1A.

The financial statements are presented in sterling which is the financial currency of the charity and rounded to the nearest £1.

1.2 Going concern

If there are material uncertainties related to events or conditions that cast significant doubt on the charity's ability to continue as a going concern, please provide the following details or state "Not applicable", if appropriate:

An explanation as to those factors that support the conclusion that the charity is a going concern;	Large assets and reserves enough to cover future expenditure
Disclosure of any uncertainties that make the going concern assumption doubtful;	n/a
Where accounts are not prepared on a going concern basis, please disclose this fact together with the basis on which the trustees prepared the accounts and the reason why the charity is not regarded as a going concern.	n/a

1.3 Change of accounting policy

The accounts present a true and fair view and the accounting policies adopted are those outlined in note { }.

Yes*	<input checked="" type="checkbox"/>	* -Tick as appropriate
No*	<input checked="" type="checkbox"/>	

Please disclose:

(i) the nature of the change in accounting policy;	n/a
(ii) the reasons why applying the new accounting policy provides more reliable and more relevant information; and	n/a
(iii) the amount of the adjustment for each line affected in the current period, each prior period presented and the aggregate amount of the adjustment relating to periods before those presented, 3.44 FRS 102 SORP.	n/a

1.4 Changes to accounting estimates

No changes to accounting estimates have occurred in the reporting period (3.46 FRS 102 SORP).

Yes*	<input checked="" type="checkbox"/>	* -Tick as appropriate
No*	<input checked="" type="checkbox"/>	

Please disclose:

(i) the nature of any changes;	n/a
(ii) the effect of the change on income and expense or assets and liabilities for the current period; and	n/a
(iii) where practicable, the effect of the change in one or more future periods.	n/a

1.5 Material prior year errors

No material prior year error have been identified in the reporting period (3.47 FRS 102 SORP).

Yes*	<input checked="" type="checkbox"/>	* -Tick as appropriate
No*	<input checked="" type="checkbox"/>	

Please disclose:

(i) the nature of the prior period error;	n/a
(ii) for each prior period presented in the accounts, the amount of the correction for each account line item affected; and	n/a
(iii) the amount of the correction at the beginning of the earliest prior period presented in the accounts.	n/a

Note 2 Accounting policies

Please complete this note when first reporting under FRS2102. Section 35 of FRS102, requires 3 reconciliations to be presented, if all are applicable.

2.1 RECONCILIATION WITH PREVIOUS GENERALLY ACCEPTED ACCOUNTING PRACTICE

Please provide a description of the nature of each change in accounting policy

--

Reconciliation of funds per previous GAAP to funds determined under FRS 102

	Start of period £	End of period £
Fund balances as previously stated		
<i>Adjustments:</i>		
Fund balance as restated		

Reconciliation of net income/(net expenditure) per previous GAAP to net income/(net expenditure) under FRS 102

	End of £
Net income/(expenditure) as previously stated	
<i>Adjustments:</i>	
Previous period net income/(expenditure) as restated	

Note 2 Accounting policies

2.2 INCOME

This standard list of accounting policies has been applied by the charity except for those ticked "No" or "N/a". Where a different or additional policy has been adopted then this is detailed in the box below.

Recognition of income	<p>These are included in the Statement of Financial Activities (SoFA) when:</p> <ul style="list-style-type: none"> the charity becomes entitled to the resources; it is more likely than not that the trustees will receive the resources; and the monetary value can be measured with sufficient reliability. 	<table border="1"> <thead> <tr> <th>Yes</th> <th>No</th> <th>N/a</th> </tr> </thead> <tbody> <tr> <td><input checked="" type="checkbox"/></td> <td><input type="checkbox"/></td> <td><input type="checkbox"/></td> </tr> </tbody> </table>	Yes	No	N/a	<input checked="" type="checkbox"/>	<input type="checkbox"/>	<input type="checkbox"/>
Yes	No	N/a						
<input checked="" type="checkbox"/>	<input type="checkbox"/>	<input type="checkbox"/>						
Offsetting	<p>There has been no offsetting of assets and liabilities, or income and expenses, unless required or permitted by the FRS 102 SORP or FRS 102.</p>	<table border="1"> <thead> <tr> <th>Yes</th> <th>No</th> <th>N/a</th> </tr> </thead> <tbody> <tr> <td><input checked="" type="checkbox"/></td> <td><input type="checkbox"/></td> <td><input type="checkbox"/></td> </tr> </tbody> </table>	Yes	No	N/a	<input checked="" type="checkbox"/>	<input type="checkbox"/>	<input type="checkbox"/>
Yes	No	N/a						
<input checked="" type="checkbox"/>	<input type="checkbox"/>	<input type="checkbox"/>						
Grants and donations	<p>Grants and donations are only included in the SoFA when the general income recognition criteria are met (5.10 to 5.12 FRS102 SORP).</p>	<table border="1"> <thead> <tr> <th>Yes</th> <th>No</th> <th>N/a</th> </tr> </thead> <tbody> <tr> <td><input checked="" type="checkbox"/></td> <td><input type="checkbox"/></td> <td><input type="checkbox"/></td> </tr> </tbody> </table>	Yes	No	N/a	<input checked="" type="checkbox"/>	<input type="checkbox"/>	<input type="checkbox"/>
Yes	No	N/a						
<input checked="" type="checkbox"/>	<input type="checkbox"/>	<input type="checkbox"/>						
Legacies	<p>In the case of performance related grants, income must only be recognised to the extent that the charity has provided the specified goods or services as entitlement to the grant only occurs when the performance related conditions are met (5.16 FRS 102 SORP).</p> <p>Legacies are included in the SOFA when receipt is probable, that is, when there has been grant of probate, the executors have established that there are sufficient assets in the estate and any conditions attached to the legacy are either within the control of the charity or have been met.</p>	<table border="1"> <thead> <tr> <th>Yes</th> <th>No</th> <th>N/a</th> </tr> </thead> <tbody> <tr> <td><input type="checkbox"/></td> <td><input type="checkbox"/></td> <td><input checked="" type="checkbox"/></td> </tr> </tbody> </table>	Yes	No	N/a	<input type="checkbox"/>	<input type="checkbox"/>	<input checked="" type="checkbox"/>
Yes	No	N/a						
<input type="checkbox"/>	<input type="checkbox"/>	<input checked="" type="checkbox"/>						
Government grants	<p>The charity has received government grants in the reporting period</p>	<table border="1"> <thead> <tr> <th>Yes</th> <th>No</th> <th>N/a</th> </tr> </thead> <tbody> <tr> <td><input type="checkbox"/></td> <td><input type="checkbox"/></td> <td><input checked="" type="checkbox"/></td> </tr> </tbody> </table>	Yes	No	N/a	<input type="checkbox"/>	<input type="checkbox"/>	<input checked="" type="checkbox"/>
Yes	No	N/a						
<input type="checkbox"/>	<input type="checkbox"/>	<input checked="" type="checkbox"/>						
Tax reclaims on donations and gifts	<p>Gift Aid receivable is included in income when there is a valid declaration from the donor. Any Gift Aid amount recovered on a donation is considered to be part of that gift and is treated as an addition to the same fund as the initial donation unless the donor or the terms of the appeal have specified otherwise.</p>	<table border="1"> <thead> <tr> <th>Yes</th> <th>No</th> <th>N/a</th> </tr> </thead> <tbody> <tr> <td><input checked="" type="checkbox"/></td> <td><input type="checkbox"/></td> <td><input type="checkbox"/></td> </tr> </tbody> </table>	Yes	No	N/a	<input checked="" type="checkbox"/>	<input type="checkbox"/>	<input type="checkbox"/>
Yes	No	N/a						
<input checked="" type="checkbox"/>	<input type="checkbox"/>	<input type="checkbox"/>						
Contractual income and performance related grants	<p>This is only included in the SoFA once the charity has provided the related goods or services or met the performance related conditions.</p>	<table border="1"> <thead> <tr> <th>Yes</th> <th>No</th> <th>N/a</th> </tr> </thead> <tbody> <tr> <td><input type="checkbox"/></td> <td><input type="checkbox"/></td> <td><input checked="" type="checkbox"/></td> </tr> </tbody> </table>	Yes	No	N/a	<input type="checkbox"/>	<input type="checkbox"/>	<input checked="" type="checkbox"/>
Yes	No	N/a						
<input type="checkbox"/>	<input type="checkbox"/>	<input checked="" type="checkbox"/>						
Donated goods	<p>Donated goods are measured at fair value (the amount for which the asset could be exchanged) unless impractical to do so.</p>	<table border="1"> <thead> <tr> <th>Yes</th> <th>No</th> <th>N/a</th> </tr> </thead> <tbody> <tr> <td><input checked="" type="checkbox"/></td> <td><input type="checkbox"/></td> <td><input type="checkbox"/></td> </tr> </tbody> </table>	Yes	No	N/a	<input checked="" type="checkbox"/>	<input type="checkbox"/>	<input type="checkbox"/>
Yes	No	N/a						
<input checked="" type="checkbox"/>	<input type="checkbox"/>	<input type="checkbox"/>						
	<p>The cost of any stock of goods donated for distribution to beneficiaries is deemed to be the fair value of those gifts at the time of their receipt and they are recognised on receipt. In the reporting period in which the stocks are distributed, they are recognised as an expense at the carrying amount of the stocks at distribution.</p>	<table border="1"> <thead> <tr> <th>Yes</th> <th>No</th> <th>N/a</th> </tr> </thead> <tbody> <tr> <td><input type="checkbox"/></td> <td><input type="checkbox"/></td> <td><input checked="" type="checkbox"/></td> </tr> </tbody> </table>	Yes	No	N/a	<input type="checkbox"/>	<input type="checkbox"/>	<input checked="" type="checkbox"/>
Yes	No	N/a						
<input type="checkbox"/>	<input type="checkbox"/>	<input checked="" type="checkbox"/>						
	<p>Donated goods for resale are measured at fair value on initial recognition, which is the expected proceeds from sale less the expected costs of sale, and recognised in 'Income from other trading activities' with the corresponding stock recognised in the balance sheet. On its sale the value of stock is charged against 'Income from other trading activities' and the proceeds from sale are also recognised as 'Income from other trading activities'.</p>	<table border="1"> <thead> <tr> <th>Yes</th> <th>No</th> <th>N/a</th> </tr> </thead> <tbody> <tr> <td><input type="checkbox"/></td> <td><input type="checkbox"/></td> <td><input checked="" type="checkbox"/></td> </tr> </tbody> </table>	Yes	No	N/a	<input type="checkbox"/>	<input type="checkbox"/>	<input checked="" type="checkbox"/>
Yes	No	N/a						
<input type="checkbox"/>	<input type="checkbox"/>	<input checked="" type="checkbox"/>						
	<p>Goods donated for on-going use by the charity are recognised as tangible fixed assets and included in the SoFA as incoming resources when receivable.</p>	<table border="1"> <thead> <tr> <th>Yes</th> <th>No</th> <th>N/a</th> </tr> </thead> <tbody> <tr> <td><input type="checkbox"/></td> <td><input type="checkbox"/></td> <td><input checked="" type="checkbox"/></td> </tr> </tbody> </table>	Yes	No	N/a	<input type="checkbox"/>	<input type="checkbox"/>	<input checked="" type="checkbox"/>
Yes	No	N/a						
<input type="checkbox"/>	<input type="checkbox"/>	<input checked="" type="checkbox"/>						
	<p>Gifts in kind for use by the charity are included in the SoFA as income from donations when receivable.</p>	<table border="1"> <thead> <tr> <th>Yes</th> <th>No</th> <th>N/a</th> </tr> </thead> <tbody> <tr> <td><input checked="" type="checkbox"/></td> <td><input type="checkbox"/></td> <td><input type="checkbox"/></td> </tr> </tbody> </table>	Yes	No	N/a	<input checked="" type="checkbox"/>	<input type="checkbox"/>	<input type="checkbox"/>
Yes	No	N/a						
<input checked="" type="checkbox"/>	<input type="checkbox"/>	<input type="checkbox"/>						
Donated services and facilities	<p>Donated services and facilities are included in the SOFA when received at the value of the gift to the charity provided the value of the gift can be measured reliably.</p>	<table border="1"> <thead> <tr> <th>Yes</th> <th>No</th> <th>N/a</th> </tr> </thead> <tbody> <tr> <td><input type="checkbox"/></td> <td><input type="checkbox"/></td> <td><input checked="" type="checkbox"/></td> </tr> </tbody> </table>	Yes	No	N/a	<input type="checkbox"/>	<input type="checkbox"/>	<input checked="" type="checkbox"/>
Yes	No	N/a						
<input type="checkbox"/>	<input type="checkbox"/>	<input checked="" type="checkbox"/>						
	<p>Donated services and facilities that are consumed immediately are recognised as income with an equivalent amount recognised as an expense under the appropriate heading in the SOFA.</p>	<table border="1"> <thead> <tr> <th>Yes</th> <th>No</th> <th>N/a</th> </tr> </thead> <tbody> <tr> <td><input type="checkbox"/></td> <td><input type="checkbox"/></td> <td><input checked="" type="checkbox"/></td> </tr> </tbody> </table>	Yes	No	N/a	<input type="checkbox"/>	<input type="checkbox"/>	<input checked="" type="checkbox"/>
Yes	No	N/a						
<input type="checkbox"/>	<input type="checkbox"/>	<input checked="" type="checkbox"/>						
Support costs	<p>The charity has incurred expenditure on support costs.</p>	<table border="1"> <thead> <tr> <th>Yes</th> <th>No</th> <th>N/a</th> </tr> </thead> <tbody> <tr> <td><input checked="" type="checkbox"/></td> <td><input type="checkbox"/></td> <td><input type="checkbox"/></td> </tr> </tbody> </table>	Yes	No	N/a	<input checked="" type="checkbox"/>	<input type="checkbox"/>	<input type="checkbox"/>
Yes	No	N/a						
<input checked="" type="checkbox"/>	<input type="checkbox"/>	<input type="checkbox"/>						
Volunteer help	<p>The value of any voluntary help received is not included in the accounts but is described in the trustees' annual report.</p>	<table border="1"> <thead> <tr> <th>Yes</th> <th>No</th> <th>N/a</th> </tr> </thead> <tbody> <tr> <td><input checked="" type="checkbox"/></td> <td><input type="checkbox"/></td> <td><input type="checkbox"/></td> </tr> </tbody> </table>	Yes	No	N/a	<input checked="" type="checkbox"/>	<input type="checkbox"/>	<input type="checkbox"/>
Yes	No	N/a						
<input checked="" type="checkbox"/>	<input type="checkbox"/>	<input type="checkbox"/>						
Income from interest, royalties and dividends	<p>This is included in the accounts when receipt is probable and the amount receivable can be measured reliably.</p>	<table border="1"> <thead> <tr> <th>Yes</th> <th>No</th> <th>N/a</th> </tr> </thead> <tbody> <tr> <td><input checked="" type="checkbox"/></td> <td><input type="checkbox"/></td> <td><input type="checkbox"/></td> </tr> </tbody> </table>	Yes	No	N/a	<input checked="" type="checkbox"/>	<input type="checkbox"/>	<input type="checkbox"/>
Yes	No	N/a						
<input checked="" type="checkbox"/>	<input type="checkbox"/>	<input type="checkbox"/>						
Income from membership subscriptions	<p>Membership subscriptions received in the nature of a gift are recognised in Donations and Legacies.</p>	<table border="1"> <thead> <tr> <th>Yes</th> <th>No</th> <th>N/a</th> </tr> </thead> <tbody> <tr> <td><input checked="" type="checkbox"/></td> <td><input type="checkbox"/></td> <td><input type="checkbox"/></td> </tr> </tbody> </table>	Yes	No	N/a	<input checked="" type="checkbox"/>	<input type="checkbox"/>	<input type="checkbox"/>
Yes	No	N/a						
<input checked="" type="checkbox"/>	<input type="checkbox"/>	<input type="checkbox"/>						
	<p>Membership subscriptions which gives a member the right to buy services or other benefits are recognised as income earned from the provision of goods and services as income from charitable activities.</p>	<table border="1"> <thead> <tr> <th>Yes</th> <th>No</th> <th>N/a</th> </tr> </thead> <tbody> <tr> <td><input checked="" type="checkbox"/></td> <td><input type="checkbox"/></td> <td><input type="checkbox"/></td> </tr> </tbody> </table>	Yes	No	N/a	<input checked="" type="checkbox"/>	<input type="checkbox"/>	<input type="checkbox"/>
Yes	No	N/a						
<input checked="" type="checkbox"/>	<input type="checkbox"/>	<input type="checkbox"/>						

Settlement of insurance claims	Insurance claims are only included in the SoFA when the general income recognition criteria are met (5.10 to 5.12 FRS102 SORP) and are included as an item of other income in the SoFA.	Yes	No	N/a	<input type="checkbox"/>	<input type="checkbox"/>	<input checked="" type="checkbox"/>
Investment gains and losses	This includes any realised or unrealised gains or losses on the sale of investments and any gain or loss resulting from revaluing investments to market value at the end of the year.	Yes	No	N/a	<input type="checkbox"/>	<input type="checkbox"/>	<input checked="" type="checkbox"/>
2.3 EXPENDITURE AND LIABILITIES							
Liability recognition	Liabilities are recognised where it is more likely than not that there is a legal or constructive obligation committing the charity to pay out resources and the amount of the obligation can be measured with reasonable certainty.	Yes	No	N/a	<input checked="" type="checkbox"/>	<input type="checkbox"/>	<input type="checkbox"/>
Governance and support costs	Support costs have been allocated between governance costs and other support. Governance costs comprise all costs involving public accountability of the charity and its compliance with regulation and good practice.	Yes	No	N/a	<input type="checkbox"/>	<input type="checkbox"/>	<input checked="" type="checkbox"/>
	Support costs include central functions and have been allocated to activity cost categories on a basis consistent with the use of resources, eg allocating property costs by floor areas, or per capita, staff costs by the time spent and other costs by their usage.	Yes	No	N/a	<input type="checkbox"/>	<input type="checkbox"/>	<input checked="" type="checkbox"/>
Grants with performance conditions	Where the charity gives a grant with conditions for its payment being a specific level of service or output to be provided, such grants are only recognised in the SoFA once the recipient of the grant has provided the specified service or output.	Yes	No	N/a	<input type="checkbox"/>	<input type="checkbox"/>	<input checked="" type="checkbox"/>
Grants payable without performance conditions	Where there are no conditions attaching to the grant that enables the donor charity to realistically avoid the commitment, a liability for the full funding obligation must be recognised.	Yes	No	N/a	<input type="checkbox"/>	<input type="checkbox"/>	<input checked="" type="checkbox"/>
Redundancy cost	The charity made no redundancy payments during the reporting period.	Yes	No	N/a	<input checked="" type="checkbox"/>	<input type="checkbox"/>	<input type="checkbox"/>
Deferred income	No material item of deferred income has been included in the accounts.	Yes	No	N/a	<input type="checkbox"/>	<input checked="" type="checkbox"/>	<input type="checkbox"/>
Creditors	The charity has creditors which are measured at settlement amounts less any trade discounts	Yes	No	N/a	<input checked="" type="checkbox"/>	<input type="checkbox"/>	<input type="checkbox"/>
Provisions for liabilities	A liability is measured on recognition at its historical cost and then subsequently measured at the best estimate of the amount required to settle the obligation at the reporting date	Yes	No	N/a	<input checked="" type="checkbox"/>	<input type="checkbox"/>	<input type="checkbox"/>
Basic financial instruments	The charity accounts for basic financial instruments on initial recognition as per paragraph 10.7 FRS102 SORP. Subsequent measurement is as per paragraphs 11.17 to 11.19, FRS102 SORP.	Yes	No	N/a	<input type="checkbox"/>	<input type="checkbox"/>	<input checked="" type="checkbox"/>
2.4 ASSETS							
Tangible fixed assets for use by charity	These are capitalised if they can be used for more than one year, and cost at least				<input checked="" type="checkbox"/>		
	They are valued at cost.	Yes	No	N/a	<input checked="" type="checkbox"/>	<input type="checkbox"/>	<input type="checkbox"/>
	The depreciation rates and methods used are disclosed in note 9.2.						
Intangible fixed assets	The charity has intangible fixed assets, that is, non-monetary assets that do not have physical substance but are identifiable and are controlled by the charity through custody or legal rights. The amortisation rates and methods used are disclosed in note 9.5	Yes	No	N/a	<input type="checkbox"/>	<input type="checkbox"/>	<input checked="" type="checkbox"/>
	They are valued at cost.	Yes	No	N/a	<input type="checkbox"/>	<input type="checkbox"/>	<input checked="" type="checkbox"/>
Heritage assets	The charity has heritage assets, that is, non-monetary assets with historic, artistic, scientific, technological, geophysical or environmental qualities that are held and maintained principally for their contribution to knowledge and culture. The depreciation rates and methods used as disclosed in note 9.6.1.4.	Yes	No	N/a	<input type="checkbox"/>	<input type="checkbox"/>	<input checked="" type="checkbox"/>
	They are valued at cost.	Yes	No	N/a	<input type="checkbox"/>	<input type="checkbox"/>	<input checked="" type="checkbox"/>
Investments	Fixed asset investments in quoted shares, traded bonds and similar investments are valued at initially at cost and subsequently at fair value (their market value) at the year end. The same treatment is applied to unlisted investments unless fair value cannot be measured reliably in which case it is measured at cost less impairment.	Yes	No	N/a	<input type="checkbox"/>	<input type="checkbox"/>	<input checked="" type="checkbox"/>
	Investments held for resale or pending their sale and cash and cash equivalents with a maturity date of less than 1 year are treated as current asset investments	Yes	No	N/a	<input type="checkbox"/>	<input type="checkbox"/>	<input checked="" type="checkbox"/>
Stocks and work in progress	Stocks held for sale as part of non-charitable trade are measured at the lower or cost or net realisable value.	Yes	No	N/a	<input checked="" type="checkbox"/>	<input type="checkbox"/>	<input type="checkbox"/>
	Goods or services provided as part of a charitable activity are measured at net realisable value based on the service potential provided by items of stock.	Yes	No	N/a	<input checked="" type="checkbox"/>	<input type="checkbox"/>	<input type="checkbox"/>
	Work in progress is valued at cost less any foreseeable loss that is likely to occur on the contract.	Yes	No	N/a	<input type="checkbox"/>	<input type="checkbox"/>	<input checked="" type="checkbox"/>
Debtors	Debtors (including trade debtors and loans receivable) are measured on initial recognition at settlement amount after any trade discounts or amount advanced by the charity. Subsequently, they are measured at the cash or other consideration expected to be received.	Yes	No	N/a	<input checked="" type="checkbox"/>	<input type="checkbox"/>	<input type="checkbox"/>

Current asset investments The charity has investments which it holds for resale or pending their sale and cash and cash equivalents with a maturity date less than one year. These include cash on deposit and cash equivalents with a maturity date of less than one year held for investment purposes rather than to meet short term cash commitments as they fall due.

Yes	No	N/a
<input type="checkbox"/>	<input type="checkbox"/>	<input checked="" type="checkbox"/>

They are valued at fair value except where they qualify as basic financial instruments.

Yes	No	N/a
<input type="checkbox"/>	<input type="checkbox"/>	<input checked="" type="checkbox"/>

**POLICIES ADOPTED
ADDITIONAL TO OR
DIFFERENT FROM
THOSE ABOVE**

Note 3 Analysis of income

Analysis		Unrestricted funds	Restricted income funds	Endowment funds	Total funds £	Prior year £
Donations and legacies:	Donations and gifts	10,774	-	-	10,774	7,001
	Gift Aid	4,214	-	-	4,214	498
	Legacies	-	-	-	-	-
	General grants provided by government/other charities	-	-	-	-	-
	Membership subscriptions and sponsorships which are in substance donations	-	-	-	-	-
	Donated goods, facilities and services	-	-	-	-	-
	Other	-	-	-	-	-
Total	14,988	-	-	14,988	7,498	
Charitable activities:	County Gang Show	54,042	-	-	54,042	49,221
	Gang Show - 90th Anniversary	81,013	-	-	81,013	-
	County Activity Centre	41,133	-	-	41,133	17,489
	Get In Quadrennial Camp	163,934	-	-	163,934	-
	Other Scouting	205,316	-	-	205,316	197,082
	Total	545,438	-	-	545,438	263,792
Other trading activities:		-	-	-	-	-
		-	-	-	-	-
		-	-	-	-	-
	Other	-	-	-	-	-
Total	-	-	-	-	-	
Income from investments:	Interest income	867	-	-	867	477
	Dividend income	-	-	-	-	-
	Rental and leasing income	-	-	-	-	-
	Other	-	-	-	-	-
	Total	867	-	-	867	477
Separate material item of income:		-	-	-	-	-
		-	-	-	-	-
		-	-	-	-	-
	Total	-	-	-	-	-
Other:	Conversion of endowment funds into income	-	-	-	-	-
	Gain on disposal of a tangible fixed asset held for charity's own use	-	-	-	-	-
	Gain on disposal of a programme related investment	-	-	-	-	-
	Royalties from the exploitation of intellectual property rights	-	-	-	-	-
	Other	-	-	-	-	-
	Total	-	-	-	-	-
TOTAL INCOME	561,294	-	-	561,294	271,767	

Other information:

All income in the prior year was unrestricted except for:
(please provide description and amounts)

--

Where any endowment fund is converted into income in the reporting period, please give the reason for the conversion.

--

Within the income items above the following items are material: (please disclose the nature, amount and any prior year amounts)

--

Note 4 Analysis of receipts of government grants

Description	This year £	Last year £
Government grant 1	-	-
Government grant 2	-	-
Government grant 3	-	-
Other	-	-
Total	-	-

Please provide details of any unfulfilled conditions and other contingencies attaching to grants that have been recognised in income.

Please give details of other forms of government assistance from which the charity has directly benefited.



Note 5 Donated goods, facilities and services

	This year £	Last year £
Seconded staff	-	-
Use of property	-	-
Other	-	-
	-	-

Please provide details of the accounting policy for the recognition and valuation of donated goods, facilities and services.

Please provide details of any unfulfilled conditions and other contingencies attaching to resources from donated goods and services not recognised in income.

Please give details of other forms of other donated goods and services not recognised in the accounts, eg contribution of unpaid volunteers.

Note 6

Analysis of expenditure

		Unrestricted funds	Restricted income funds	Endowment funds	Total funds £	Prior year £
	Analysis					
Expenditure on raising funds:	Incurring seeking donations	-	-	-	-	-
	Incurring seeking legacies	-	-	-	-	-
	Incurring seeking grants					
	Operating membership schemes and social lotteries					
	Staging fundraising events					
	Fundraising agents					
	Operating charity shops					
	Operating a trading company undertaking non-charitable trading activity					
	Advertising, marketing, direct mail and publicity	-	-	-	-	-
	Start up costs incurred in generating new source of future income	-	-	-	-	-
	Database development costs	-	-	-	-	-
	Other trading activities					
	Investment management costs:	-	-	-	-	-
	Portfolio management costs	-	-	-	-	-
	Cost of obtaining investment advice	-	-	-	-	-
	Investment administration costs	-	-	-	-	-
	Intellectual property licencing costs	-	-	-	-	-
Rent collection, property repairs and maintenance charges	-	-	-	-	-	
	-	-	-	-	-	
Total expenditure on raising funds	-	-	-	-	-	
Expenditure on charitable activities	County Gang Show	51,687	-	-	51,687	52,370
	Gang Show - 90th Anniversary	90,227	-	-	90,227	-
	County Activity Centre	29,144	-	-	29,144	30,281
	Get In Quadrennial Camp	169,968	-	-	169,968	-
	Other Scouting	212,992	-	-	212,992	202,818
	Total expenditure on charitable activities	554,019	-	-	554,019	285,469
Separate material item of expense		-	-	-	-	-
		-	-	-	-	-
		-	-	-	-	-
	Total	-	-	-	-	-
Other		-	-	-	-	-
		-	-	-	-	-
		-	-	-	-	-
		-	-	-	-	-
	Total other expenditure	-	-	-	-	-
TOTAL EXPENDITURE	554,019	-	-	554,019	285,469	

Other information:

Analysis of expenditure on charitable activities

Activity or programme	Activities undertaken directly	Grant funding of activities	Support Costs	Total this year	Total prior year
	£	£	£	£	£
Activity 1					
Activity 2					
Other					
Total					

Prior year expenditure on charitable activities can be analysed as follows:

Within the expenditure items above the following items are material: (please disclose the nature, amount and any prior year amounts)

Section C **Notes to the accounts** **(cont)**

Note 7 **Extraordinary items**

Please explain the nature of each extraordinary item occurring in the period.

	Description	This year £	Last year £
Extraordinary item 1		-	-
Extraordinary item 2		-	-
Extraordinary item 3		-	-
Extraordinary item 4		-	-
Total extraordinary items		-	-

Section C**Notes to the accounts****Note 9 Support Costs**

Please complete this note if the charity has analysed its expenses using activity categories and has support costs.

Support cost (examples)	Raising funds	Activity 1	Activity 2	Activity 3	Grand total	Basis of allocation (Describe method)
	£	£	£	£	£	
Governance	-	-		-	-	
	-	-		-	-	
	-	-		-	-	
	-	-		-	-	
Other	-	-		-	-	
Total	-	-		-	-	

Please provide details of the accounting policy adopted for the apportionment of costs between activities and any estimation techniques used to calculate their apportionment.

Section C**Notes to the accounts****Note 10** Details of certain items of expenditure**10.1 Fees for examination of the accounts**

Please provide details of the amount paid for any statutory external scrutiny of accounts and other services provided by your independent examiner. If nothing was paid please enter '0' in the appropriate box(es).

Independent examiner's fees**Assurance services other than audit or independent examination****Tax advisory fees****Other fees (for example: financial advice, consultancy, accountancy services) paid to the independent examiner**

This year £	Last year £
1,620	1,740

Note 11 **Paid employees**

Please complete this note if the charity has any employees.

11.1 Staff Costs

	This year £	Last year £
Salaries and wages	-	-
Social security costs	-	-
Pension costs (defined contribution scheme)		
Other employee benefits	-	-
Total staff costs	-	-

Please provide details of expenditure on staff working for the charity whose contracts are with and are paid by a related party

--

Please give details of the number of employees whose total employee benefits (excluding employer pension costs) fell within each band of £10,000 from £60,000 upwards. If there are no such transactions, please enter 'true' in the box provided.

No employees received employee benefits (excluding employer pension costs) for the reporting period of more than £60,000

--

Band	Number of employees
£60,000 to £69,999	
£70,000 to £79,999	
£80,000 to £89,999	
£90,000 to £99,999	
£100,000 to £109,999	

Please provide the total amount paid to key management personnel (includes trustees and senior management) for their services to the charity

--

11.2 Average head count in the year

The parts of the charity in which the employees work

	This year Number	Last year Number
Fundraising	-	-
Charitable Activities	-	-
Governance	-	-
Other	-	-
Total	-	-

11.3 Ex-gratia payments to employees and others (excluding trustees)

Please complete if an ex-gratia payment is made.

Please explain the nature of the payment

Please state the legal authority or reason for making the payment

Please state the amount of the payment (or value of any waiver of a right to an asset)

11.4 Redundancy payments

Please complete if any redundancy or termination payment is made in the period.

Total amount of payment

The nature of the payment (cash, asset etc.)

The extent of redundancy funding at the balance sheet date

Please state the accounting policy for any redundancy or termination payments

Note 12 Defined contribution pension scheme or defined benefit scheme accounted for as a defined contribution scheme.

12.1 Please complete this note if a defined contribution pension scheme is operated.

Amount of contributions recognised in the SOFA as an expense

Please explain the basis for allocating the liability and expense of defined contribution pension scheme between activities and between restricted and unrestricted funds.

12.2 Please complete this section where the charity participates in a defined benefit pension plan but is unable to ascertain its share of the underlying assets and liabilities.

Please confirm that although the scheme is accounted for as a defined contribution plan, it is a defined benefit plan.

Please provide such information as is available about the plan's surplus or deficit and the implications, if any, for the reporting charity

12.3 Please complete this section where the charity participates in a multi-employer defined benefit pension plan that is accounted for as a defined contribution plan.

Describe the extent to which the charity can be liable to the plan for other entities' obligations under the terms and conditions of the multi-employer plan

Note 13 Grantmaking

Please complete this note if the charity made any grants or donations which in aggregate form a material part of the charitable activities undertaken.

13.1 Analysis of grants paid (included in cost of charitable activities)

Analysis	Grants to institutions	Grants to individuals	Support costs	Total
Activity or project 1			£	£
Activity or project 2			-	-
Activity or project 3			-	-
Activity or project 4			-	-
Total	-	-	-	-

Please enter "Nil" if the charity does not identify and/or allocate support costs.

13.2 Grants made to institutions

My charity has made grants to particular institutions that are material in the context of its grantmaking. Details of the institution supported, purpose of the grant and total paid to each institution is available on the charity's web site.

Yes	Please provide details of charity's URL.
No	Provide details below

Names of institution	Purpose	Total amount of grants paid £
		-
		-
		-
		-
		-
		-
		-
		-
		-
		-
		-
Total grants to institutions in reporting period		-
Other unanalysed grants		-
TOTAL GRANTS PAID		-

Note 14 Tangible fixed assets

Please complete this note if the charity has any tangible fixed assets

14.1 Cost or valuation

	Freehold land & buildings	Other land & buildings	Plant, machinery and motor vehicles	Fixtures, fittings and equipment Alfrey/WSC	Fixtures, fittings and equipment WAGS	Fixtures, fittings and equipment WAGS	Total
	£	£	£	£			£
At the beginning of the year	-	-	21,726	7,058	6,912	25,714	61,410
Additions	-	-	-	-			-
Revaluations	-	-	-	-			-
Disposals	-	-	-	-			-
Transfers *	-	-	-	-			-
At end of the year	-	-	21,726	7,058	6,912	25,714	61,410

14.2 Depreciation and impairments

**Basis	SL or RB	SL or RB	SL	SL	RB	RB	SL or RB	Straight Line ("SL") or Reducing Balance ("RB")
** Rate			Monthly based on Assessed Asset Life	Monthly based on Assessed Asset Life	20%	20%		
At beginning of the year	-	-	12,104	2,507	6,708	22,467	43,786	
Disposals	-	-	-	-			-	
Depreciation	-	-	4,212	706	204	3,248	8,369	
Impairment	-	-	-	-			-	
Transfers*	-	-	-	-			-	
At end of the year	-	-	16,316	3,213	6,912	25,714	52,155	

14.3 Net book value

Net book value at the beginning of the year	-	-	9,622	4,551	204	3,248	17,624
Net book value at the end of the year	-	-	5,410	3,845	-	-	9,255

14.4 Impairment

Please provide a description of the events and circumstances that led to the recognition or reversal of an impairment loss.

--

14.5 Revaluation

If an accounting policy of revaluation is adopted, please provide:

the effective date of the revaluation

the name of independent valuer, if applicable

the methods applied and significant assumptions

the carrying amount that would have been recognised had the assets been carried under the cost model.

14.6 Other disclosures

(i) Please state the amount of borrowing costs, if any, capitalised in the construction of tangible fixed assets and the capitalisation rate used.

(ii) Please provide the amount of contractual commitments for the acquisition of tangible fixed assets.

(iii) Details of the existence and carrying amounts of property, plant and equipment to which the charity has restricted title or that are pledged as security for liabilities.

* The "transfers" row is for movements between fixed asset categories.

** Please indicate the method of depreciation by deleting the method not applicable (SL = straight line; RB = reducing balance).

Section C

Notes to the accounts

Note 15 Intangible assets

Please complete this note if the charity has any intangible assets

15.1 Cost or valuation

	Research & development	Patents and trademarks	Other	Total
	£	£	£	£
At beginning of the year	-	-	-	-
Additions	-	-	-	-
Disposals	-	-	-	-
Revaluations	-	-	-	-
Transfers *	-	-	-	-
At end of the year	-	-	-	-

15.2 Amortisation and impairments

**Basis	SL or RB	SL or RB	SL or RB	SL or RB	Straight Line ("SL") or Reducing Balance ("RB")
** Rate					

At beginning of the year	-	-	-	-
Disposals	-	-	-	-
Amortisation	-	-	-	-
Impairment	-	-	-	-
Transfers*	-	-	-	-
At end of year	-	-	-	-

15.3 Net book value

Nat book value at the beginning of the year	-	-	-	-
Net book value at the end of the year	-	-	-	-

15.4 Accounting policy

Please disclose the accounting policy for intangible fixed assets including:

*Reasons for choosing
amortisation rates*

*Policies for the recognition of any
capital development*

15.5 Impairment

*Please provide a description of the events and
circumstances that led to the recognition or
reversal of an impairment loss.*

--

15.6 Revaluation

If an accounting policy of revaluation is adopted, please provide:

the effective date of the revaluation

the name of independent valuer, if applicable

the methods applied

*the carrying amount that would have been
recognised had the assets been carried under
the cost model.*

15.7 Other disclosures

(i) If your intangible asset was acquired by way of grant, provide value on initial recognition and carrying amount of the asset.

(ii) Details of the carrying amounts of any intangible assets to which the charity has restricted title or that are pledged as security for liabilities.

(iii) Please provide the amount of contractual commitments for the acquisition of intangible assets.

(iv) State the amount of research and development expenditure recognised as expenditure in the year.

(vi) Please detail the headings in the SOFA in which a charge for amortisation of intangible assets is included.

(vii) For any material intangible assets, please provide a description, its carrying amount and any remaining amortisation period.

* The "transfers" row is for movements between fixed asset categories.

** Please indicate the method of depreciation by deleting the method not applicable (SL = straight line; RB = reducing balance). Also please indicate the rate of depreciation: for straight line, what is the anticipated life of the asset (in years); for reducing balance, what is the percentage annual

Note 16 **Heritage assets**

Please complete this note if the charity has heritage assets

16.1 General disclosures for all charities holding heritage assets

<p>(i) Explain the nature and scale of heritage assets held.</p>	
<p>(ii) Explain the policy for the acquisition, preservation, management and disposal of heritage assets.</p>	

16.2 Cost or valuation

	Heritage asset 1 £	Heritage asset 2 £	Heritage asset 3 £	Heritage asset 4 £	Total £
At beginning of the year	-	-	-	-	-
Additions	-	-	-	-	-
Disposals	-	-	-	-	-
Revaluations	-	-	-	-	-
Transfers *	-	-	-	-	-
At end of the year	-	-	-	-	-

16.3 Depreciation and impairments

**Basis						Straight Line ("SL") or Reducing Balance
** Rate						

At beginning of the year	-	-	-	-	-
Disposals	-	-	-	-	-
Depreciation	-	-	-	-	-
Impairment	-	-	-	-	-
Transfers*	-	-	-	-	-
At end of year	-	-	-	-	-

16.4 Net book value

Nat book value at the beginning of the year	-	-	-	-	-
Net book value at the end of the year	-	-	-	-	-

16.5 Impairment

Please provide a description of the events and circumstances that led to the recognition or reversal of an impairment loss.

16.6 Revaluation

If an accounting policy of revaluation is adopted, please provide:

the effective date of the revaluation

the name of independent valuer, if applicable

qualifications of independent valuer

the methods applied and significant assumptions

any significant limitations on the valuation

16.7 Analysis of heritage assets by class or group distinguishing those at cost and those at valuation

	At valuation Group A	At cost Group B	Total
	£	£	£
Carrying amount at the beginning of the period	-	-	-
Additions	-	-	-
Disposals	-	-	-
Depreciation/impairment	-	-	-
Revaluation	-	-	-
Carrying amount at the end of period	-	-	-

16.8 Heritage assets (where heritage assets are not recognised on the balance sheet)

(i) Explain the reason why heritage assets have not been recognised on the balance sheet.	
(ii) Describe the significance and nature of heritage assets.	
(iii) Disclose information that is helpful in assessing the value of heritage assets.	
(iv) Explain the reason why it is not practicable to obtain a valuation of heritage assets.	

16.9 Five year summary of heritage assets transactions

	2015	2014	2013	2012	2011
	£	£	£	£	£
Purchases					
Group A	-	-	-	-	-
Group B	-	-	-	-	-
Group C	-				
Other	-				
Donations					
Group A	-	-	-	-	-
Group B	-	-	-	-	-
Group C	-	-	-	-	-
Other	-	-	-	-	-
Total additions	-	-	-	-	-
Charge for impairment					
Group A	-	-	-	-	-
Group B	-	-	-	-	-
Group C	-	-	-	-	-
Other	-	-	-	-	-
Total charge for impairment	-	-	-	-	-
Disposals					
Group A - carrying amount	-	-	-	-	-
Group B - carrying amount	-	-	-	-	-
Group C	-	-	-	-	-
Other	-	-	-	-	-
Total disposals	-	-	-	-	-

Section C **Notes to the accounts** **(cont)**

Note 17 **Investment assets**

Please complete this note if the charity has any investment assets.

17.1 Fixed assets investments (please provide for each class of investment)

	Cash & cash equivalents	Listed investments	Investment properties	Social investments	Other	Total
Carrying (fair) value at beginning of period	-	-	-	-	-	-
Add: additions to investments during period*	-	-	-	-	-	-
Less: disposals at carrying value	-	-	-	-	-	-
Less: impairments	-	-	-	-	-	-
Add: Reversal of impairments	-	-	-	-	-	-
Add/(deduct): transfer in/(out) in the period	-	-	-	-	-	-
Add/(deduct): net gain/(loss) on revaluation	-	-	-	-	-	-
Carrying (fair) value at end of year	-	-	-	-	-	-

*Please specify additions resulting from acquisitions through business combinations, if any.

--

Please note that Fair Value in this context is the amount for which an asset could be exchanged between knowledgeable and willing parties in an arm's length transaction. For traded securities, the fair value is the value of the security quoted on the London Stock Exchange Daily Official List or equivalent. For other assets where there is no market price on a traded market, it is the trustees' or valuers' best estimate of fair value.

17.2 Please provide a breakdown of investments shown above agreeing with the balance sheet row B04 differentiating between those held at fair value and those held at cost less impairment.

Analysis of investments

	Fair value at year end	Cost less impairment
	£	£
Cash or cash equivalents	-	-
Listed investments	-	-
Investment properties	-	-
Social investments	-	-
Other investments	-	-
Total	-	-
Grand total (Fair value at year end+Cost less impairment)		

17.3 If your charity holds investment properties, please complete the following note:

- (i) Explain the methods and significant assumptions in determining the fair value of investment property held by the charity
- (ii) Name or independent valuer, if applicable, and relevant qualifications
- (iii) Provide details of any restrictions on the ability to realise investment property or on the remittance of income or disposal proceeds
- (iv) Explain any contractual obligations for the purchase, construction or development of investment property or for repairs, maintenance or enhancements

17.4 Please provide a breakdown of current asset investments, if applicable, agreeing with the balance sheet.

Analysis of current asset investments

	This year	Last year
	£	£
Cash or cash equivalents	-	-
Listed investments	-	-
Investment properties	-	-
Social investments	-	-
Other investments	-	-
Total	-	-

17.5 Guarantees

Please provide details and amount of any guarantee made to or on behalf of a third party

Name of the entity or entities benefitting from those guarantees

Please explain how the guarantee furthers the charity's aims

17.6 Concessionary loans

Amount of concessionary loans made (*Multiple loans made may be disclosed in aggregate provided that such aggregation does not obscure significant information*).

Description	This year £	Last year £
Total		

Amount of concessionary loans received (*Multiple loans received may be disclosed in aggregate provided that such aggregation does not obscure significant information*).

Description	This year £	Last year £
Total		

Terms and conditions eg interest rate, security provided

Value of any concessionary loans which have been committed but not taken up at the reporting date

Amounts payable within 1 year

Amounts payable after more than 1 year

Amounts receivable within 1 year

Amounts receivable after more than 1 year

17.7 Additional information

Please provide information about the significance of investments to the charity's financial position or performance eg. terms and conditions of loans or the use of hedging to manage financial risk.

For all investments measured at fair value, the basis for determining the value, including any assumptions applied when using a valuation technique.

Where a charity has provided financial assets as a form of security, the carrying amount of the financial asset pledged as security and the terms and conditions relating to its pledge.

Note 18 Stocks

Please complete this note if the charity holds any stock items

18.1 Please state the carrying amount of stock and work in progress analysed between activities.

	Stock		Donated goods		Work in progress
	For distribution	For resale	For distribution	For resale	
	£	£	£	£	
Charitable activities:					
<i>Opening</i>	-	3,762	-	-	-
<i>Added in period</i>	-	1,207	-	-	-
<i>Expensed in period</i>	-	2,618	-	-	-
<i>Impaired</i>	-	-	-	-	-
<i>Closing</i>	-	2,351	-	-	-
Other trading activities:					
<i>Opening</i>	-	-	-	-	-
<i>Added in period</i>	-	-	-	-	-
<i>Expensed in period</i>	-	-	-	-	-
<i>Impaired</i>	-	-	-	-	-
<i>Closing</i>	-	-	-	-	-
Other:					
<i>Opening</i>	-	-	-	-	-
<i>Added in period</i>	-	-	-	-	-
<i>Expensed in period</i>	-	-	-	-	-
<i>Impaired</i>	-	-	-	-	-
<i>Closing</i>	-	-	-	-	-
Total this year	-	-	-	-	-
Total previous year	-	-	-	-	-

18.2 Please specify the carrying amount of any stocks pledged as security for liabilities

--

Note 19 Debtors and prepayments

Please complete this note if the charity has any debtors or prepayments.

19.1 Analysis of debtors

Trade debtors

Prepayments and accrued income

Other debtors

Total

This year	Last year
£	£
900.0	-
191,301	80,360
-	-
192,201	80,360

Please complete 19.2 where a material debtor is recoverable more than a year after the reporting date.

19.2 Analysis of debtors recoverable in more than 1 year (included in debtors above)

Trade debtors

Prepayments and accrued income

Other debtors

Total

This year	Last year
£	£
-	-
-	24,593
-	-
-	-
-	24,593

Note 20 Creditors and accruals

Please complete this note if the charity has any creditors or accruals.

20.1 Analysis of creditors

	Amounts falling due within one year		Amounts falling due after more than one year	
	This year £	Last year £	This year £	Last year £
Accruals for grants payable	-	-	-	-
Bank loans and overdrafts	-	-	-	-
Trade creditors	-	-	-	-
Payments received on account for contracts or performance-related grants	-	-	-	-
Accruals and deferred income	349,814	252,939	-	21,519
Taxation and social security	-	-	-	-
Other creditors	6,489	9,040	-	-
Total	356,303	261,979	-	21,519

20.2 Deferred income

Please complete this note if the charity has deferred income.

Please explain the reasons why income is deferred.

Advance payments have been received for events that will take place in future years

Movement in deferred income account

	This year £	Last year £
Balance at the start of the reporting period	247,800	108,363
Amounts added in current period	299,158	244,753
Amounts released to income from previous periods	- 226,281	- 105,317
Balance at the end of the reporting period	320,677	247,800

Note 21 Provisions for liabilities and charges

Please complete this note if you have included in charity expenditure any provisions. A provision is made when the charity has a liability of uncertain timing or amount.

21.1 Please provide:

- a brief description of any obligations on the balance sheet and the expected amount and timing of resulting payments;
- an indication of the uncertainties about the amount or timing of those outflows; and
- the amount of any expected reimbursement, stating the amount of any asset that has been recognised for that expected reimbursement.

21.2 Movements in recognised provisions and funding commitment during the period

Balance at the start of the reporting period
 Amounts added in current period
 Amounts charged against the provision in the current period
 Unused amounts reversed during the period
 Balance at the end of the reporting period

This year £	Last year £
-	-
-	-
-	-
-	-
-	-

21.3 For any funding commitment that is not recognised as a liability or provision, provide details of commitment made, the time frame of that commitment, any performance-related conditions and details of how the commitment will be funded (with contracts for capital expenditure separately identified).

--

21.4 Where unrestricted funds have been designated to a fund commitment, please disclose the nature of any amounts designated and the likely timing of that expenditure.

--

Note 22 Other disclosures for debtors, creditors and other basic financial instruments

22.1 Please provide information about the significance of financial instruments (eg. debtors, creditors, investments etc) to the charity's financial position or performance, for example, the terms and conditions of loans or the use of hedging to manage financial risk.

--

22.2 If the charity has provided financial assets as a form of security, the carrying amount of the financial assets pledged as security and the terms and conditions related to its pledge should be given here.

--

Note 23 Contingent liabilities and contingent assets**23.1 Contingent liabilities**

Where the charity has contingent liabilities, please complete the following section unless the possibility of their existence is remote.

Description of item including its legal nature. Please describe any security provided in connection to the liability.	Estimate of financial effect

23.2 Contingent assets

Where the charity has contingent assets, please complete the following section when their existence is probable

Description of item	Estimate of financial effect

23.4 Other disclosures for contingent assets and/or liabilities

Please provide the following information where practicable:

Explain any uncertainties relating to the amount or timing of settlement; and the possibility of any reimbursement

Where it is not practical to make one or more of these disclosures, please state this fact

Section C**Notes to the accounts****(cont)****Note 24 Cash at bank and in hand**

Short term cash investments (less than 3 months maturity date)
Short term deposits
Cash at bank and on hand
Other
Total

This year £	Last year £
-	-
-	-
463,433	485,446
463,433	485,446

Note 25 Fair value of assets and liabilities

25.1 Please provide details of the charity's exposure to credit risk (the risk of incurring a loss due to a debtor not paying what is owed) , liquidity risk (the risk of not being able to meet short term financial demands) and market risk (the risk that the value of an investment will fall due to changes in the market) arising from financial instruments to which the charity is exposed at the end of the reporting period and explain how the charity manages those risks.

--

25.2 Please give details of the amount of change in the fair value of basic financial instruments (debtors, creditors, investments (see section 11, FRS 102 SORP)) measured at fair value through the SoFA that is attributable to changes in credit risk.

--

Note 26 **Events after the end of the reporting period**

Please complete this note events (not requiring adjustment to the accounts) have occurred after the end of the reporting period but before the accounts are authorised which relate to conditions that arose after the end of the reporting period.

Please provide details of the nature of the event

Provide an estimate of the financial effect of the event or a statement that such an estimate cannot be made

Section C **Notes to the accounts** **(cont)**

Note 27 **Charity funds**

27.1 Details of material funds held and movements during the CURRENT reporting period

Please give details of the movements of material individual funds in the reporting period together with a balancing figure for 'Other funds'. The 'Total funds' figure below should reconcile to 'Total funds' in the balance sheet.

** Key: PE - permanent endowment funds; EE - expendible endowment funds; R - restricted income funds, including special trusts, of the charity; and U - unrestricted funds*

Fund names	Type PE, EE R or UR *	Purpose and Restrictions	Fund balances brought forward £	Income £	Expenditure £	Transfers £	Gains and losses £	Fund balances carried forward £
Designated Reserve - Operations	UR	Unrestricted - Working capital support for operational activities	101,438	1,890	-	-	-	103,328
Designated Reserve - Restoration	UR	Unrestricted - Site restoration potential liability on cessation of property lease	25,000	-	-	-	-	25,000
General Reserve	UR	Unrestricted - accumulated fund for future investment	177,256	559,404	- 554,019	-	-	182,641
			-	-	-	-	-	-
			-	-	-	-	-	-
			-	-	-	-	-	-
			-	-	-	-	-	-
			-	-	-	-	-	-
			-	-	-	-	-	-
Other funds	N/a	N/a	-	-	-	-	-	-
		Total Funds	303,695	561,294	- 554,019	-	-	310,970

Section C **Notes to the accounts** **(cont)**

Note 27 **Charity funds (cont)**

27.2 Details of material funds held and movements during the PREVIOUS reporting period

Please give details of the movements of material individual funds in the reporting period together with a balancing figure for 'Other funds'. The 'Total funds' figure below should reconcile to 'Total funds' in the balance sheet.

* Key: PE - permanent endowment funds; EE - expendible endowment funds; R - restricted income funds, including special trusts, of the charity; and U - unrestricted funds

Fund names	Type PE, EE R or UR *	Purpose and Restrictions	Fund balances brought forward £	Income £	Expenditure £	Transfers £	Gains and losses £	Fund balances carried forward £
Designated Reserve - Operations	UR	Unrestricted - Working capital support for operational activities	101,063	1,375	- 1,000	-	-	101,438
Designated Reserve - Restoration	UR	Unrestricted - Site restoration potential liability on cessation of property lease	25,000	-	-	-	-	25,000
General Reserve	UR	Unrestricted - accumulated fund for future investment	191,333	270,392	- 284,469	-	-	177,256
			-	-	-	-	-	-
			-	-	-	-	-	-
			-	-	-	-	-	-
			-	-	-	-	-	-
			-	-	-	-	-	-
			-	-	-	-	-	-
Other funds	N/a	N/a	-	-	-	-	-	-
		Total Funds	317,396	271,767	- 285,469	-	-	303,695

Section C	Notes to the accounts	(cont)
------------------	------------------------------	---------------

Note 27 **Charity funds (cont)**

27.3 Transfers between funds

	Reason for transfer and where endowment is converted to income, legal power for its conversion	Amount
Between unrestricted and restricted funds		
Between endowment and restricted funds		
Between endowment and unrestricted funds		

27.4 Designated funds

Planned use	Purpose of the designation	Amount
Designated Reserve - Operations	Provision of sufficient cash resources to enable funding of day to day operations and event activities	103,328
Designated Reserve - Restoration	The lease for Alfrey Activity Centre includes a restoration clause on cessation of use. This fund has been created to cover the potential restoration costs if the lease was ended.	25,000

Note 28 Transactions with trustees and related parties

If the charity has any transactions with related parties (other than the trustee expenses explained in guidance notes) details of such transactions should be provided in this note. If there are no transactions to report, please enter "True" in the box or "False" if there are transactions to report.

28.1 Trustee remuneration and benefits

None of the trustees have been paid any remuneration or received any other benefits from an employment with their charity or a related entity (True or False)

TRUE

In the period the charity has paid trustees remuneration and benefits. Please give the amount of, and legal authority for, any remuneration or other benefits paid to a trustee by the charity or any institution or company connected with it.

Name of trustee	Legal authority (eg order, governing document)	Amounts paid or benefit value				
		This year				Last year
		Remuneration	Pension contribution	Redundancy (including loss of office)/ex gratia	Other	TOTAL
		£	£		£	£

Please give details of why remuneration or other employment benefits were paid.

Where an ex gratia payment has been made to a trustee, provide an explanation of the nature of the payment.

28.2 Trustees' expenses

If the charity has paid trustees expenses for fulfilling their duties, details of such transactions should be provided in this note. If there are no transactions to report, please enter "True" in the box below. If there are transactions to report, please enter "False".

No trustee expenses have been incurred (True or False)

TRUE

Type of expenses reimbursed	This year	Last year
	£	£
Travel		
Subsistence		
Accommodation		
Other (please specify):		
TOTAL		

Please provide the number of trustees reimbursed for expenses or who had expenses paid by the charity

28.3 Transaction(s) with related parties

Please give details of any transaction undertaken by (or on behalf of) the charity in which a related party has a material interest, including where funds have been held as agent for related parties. If there are no such transactions, please enter 'true' in the box provided.

There have been no related party transactions in the reporting period (True or False)

TRUE

Name of the trustee or related party	Relationship to charity	Description of the transaction(s)	Amount	Balance at period end	Provision for bad debts at period end	Amounts written off during reporting period
			£	£	£	£

In relation to the transactions above, please provide the terms and conditions, including any security and the nature of any payment (consideration) to be provided in settlement.

--

For any related party, please provide details of any guarantees given or received.

--

Note 29**Additional Disclosures**

The following are significant matters which are not covered in other notes and need to be included to provide a proper understanding of the accounts. If there is insufficient room here, please add a separate sheet.