

Annual 2023/24 **Report**

Contents

- 3 Welcome** ▶
- 4 About Us** ▶
 - Our Charity values ▶
 - Our Patrons ▶
 - What we do ▶
 - Meet our Trustees ▶
- 15 2023/24 in Review** ▶
- 18 Highlights** ▶
 - NCCHT ▶
 - Snowflakes ▶
 - Team highlights ▶
 - Awards ▶
- 24 Funded Project Highlights** ▶
 - Helipad ▶
 - Specialist equipment ▶
 - Art+ ▶
 - Research ▶
- 32 Financial Review** ▶
 - At a glance ▶
 - How do we manage our funds? ▶
 - Report of the management committee ▶
 - Independent auditors report ▶
- 48 Statement of Financial Activities** ▶
 - Balance sheet ▶
 - Cash flow ▶
 - Notes to the Financial Statements ▶



Click the ▶ to jump ahead

Welcome

As we reflect on the past year, we are filled with gratitude and pride for what we have achieved together as a community. 2023/24 has been a year of remarkable achievements, resilience, and unwavering commitment to our mission of helping to change lives at Sheffield Children's.

We are thrilled to have had continued support from community and corporate fundraisers, who have helped us reach significant milestones. Together, we raised over £1.2million with our corporate supporters, which is a testament to the strong partnerships we've developed with businesses that share our dedication to helping ensure that Sheffield Children's is able to provide the best possible care for children all over Yorkshire, the UK and beyond. Additionally, almost £1million was raised by our community supporters, showing the power of grassroots engagement and the profound impact of collective action.

Our Children's Champions program has experienced considerable growth, with income increasing substantially over the past year. This program, which empowers individuals to become advocates for children's health and well-being, has become a cornerstone of our efforts to contribute to the vision of Sheffield Children's, ensuring that children and young people will always receive outstanding care, in excellent facilities. The passion and dedication from our Children's Champions has been instrumental in driving positive change, and we have been inspired by the impact they have made.

To each and every one of our supporters, we extend our heartfelt gratitude for your generosity and belief in our cause.

However, it's important to also acknowledge the challenges we, and other charities, faced this year; particularly with Trusts and Grants applications. As the landscape of charitable giving continues to evolve, so too do the complexities of navigating funding opportunities. Despite encountering obstacles along the way, we remain steadfast in our commitment to innovation, adaptability, and the pursuit of excellence in all that we do.

In line with this commitment, we were delighted to announce the Charity's latest capital appeal in 2023, as it pledged to invest in innovation and raise £2million towards the cost of the new National Centre for Child Health Technology (NCCHT). The £22million centre will be a place to develop world-leading research, and build new technologies to solve the biggest challenges in children's healthcare. The Charity is well underway with fundraising, and is proud to be a key partner in such an exciting new initiative for Sheffield Children's

As we embark on the journey ahead, we are filled with optimism and enthusiasm. Our collective efforts have already yielded remarkable results, and we have no doubt that, with continued dedication, collaboration, and innovation, we can achieve even greater heights in the next year and beyond. We have ambitious plans to grow the Charity's profile and its income, as we head towards exciting milestones, and continue to deliver significant transformational projects.

As always, we would like to thank all associated with The Children's Hospital Charity, from our staff and donors, to our volunteers, for their continued support – we really couldn't do it without you.



John Armstrong
Chief Executive Officer
The Children's Hospital Charity



Jonathan McMahon
Chair
The Children's Hospital Charity

About Us

Sheffield Children's NHS Foundation Trust is at the heart of everything we do at the Charity. We come together as one team, delivering over and above the NHS provision and ultimately enhancing the experience for patients and families visiting the Trust.



Sheffield Children's is a leader in children's health and shapes future paediatric care globally. Professionally, many colleagues are amongst the best in their fields, being recognised nationally and internationally.

One of only three specialist standalone children's Trusts in the UK, the other two being Alder Hey and Great Ormond Street, children and young people travel from all over the country and the world to Sheffield Children's.

Sheffield Children's is unique in the breadth of its expertise, supporting children and young people in many different ways. Several UK-wide and international centres are at Sheffield Children's, providing highly specialised healthcare, making it a leader in children's health.

This includes neurosurgery and intensive care, through to supporting with the management of long-term conditions like cystic fibrosis or sleep difficulties. Sheffield Children's also provides community and mental health care as well as acute and specialist services for children from 0-16 years old.

Here at The Children's Hospital Charity, we change children's lives every day by supporting groundbreaking medical treatment and creating a comfortable, engaging environment. Donations, fundraising, and sponsorship help to create a healthier future for children and young people who visit.



Our Charity Values

A

Accountability

We are transparent, with the money raised and the projects we fund going above and beyond to help create a healthier future for children and young people.

We are accountable to our environment, aiming to achieve sustainability together.

C

Compassion

We are led by kindness, empathy, and understanding. We support and go above and beyond for our donors, caring and listening to their needs.

**E**

Excellence

We strive to be dynamic and creative in our work, winning awards for our innovation, enhancing the patient and family experience. With excellence we can have an impact on those we support, going above and beyond the NHS provision and supporting Sheffield Children's be a leader in paediatric care.

I

Inclusivity

We promote diversity and are committed to inclusivity. We strive to ensure all colleagues, supporters and individuals feel valued, respected and appreciated.

**T**

Together

We come together as one team with colleagues, patients, families and donors. We are passionate about Sheffield Children's, a cause we care deeply about.

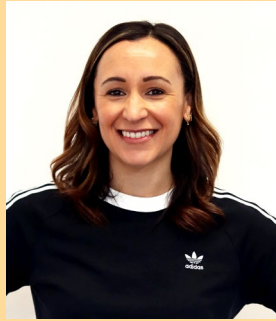
Our Patrons



Lucy Beaumont



Jon Richardson



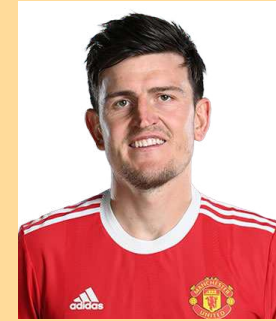
Dame Jessica Ennis-Hill



Dan Walker



Esme Morgan



Harry Maguire



James Toseland



Nick Matthew OBE



Joe Root MBE



Dominic Calvert-Lewin



Bombette Martin



Richard Hawley



Pete McKee



Matt Fitzpatrick

What We Do

We help facilitate Sheffield Children's NHS Foundation Trust to be innovative, dynamic and ambitious.

Our Mission

Our mission is to enhance Sheffield Children's, giving children and young people the best chance of a healthier future.

We connect supporters to Sheffield Children's, funding enhancements above the NHS provision and help make Sheffield Children's a brilliant place to work and visit. The money we raise funds innovative projects, ground-breaking research which shapes future paediatric care, specialist medical equipment, new facilities and creates an engaging environment built with children in mind.



Our charitable objectives

The objectives of the Charity are for the public benefit, the relief of sickness and in particular:

- to enhance the services, facilities and environment of Sheffield Children's and its reputation as a centre of excellence for the care, prevention and cure of illnesses affecting children;
- to further any charitable purpose(s) relating to the general, or any specific, purposes of Sheffield Children's or the health service;
- to promote, protect, preserve and advance all or any aspects of the health of the public; and
- to advance and promote knowledge and education in medicine including engagement in and supporting medical research (and the dissemination of the useful results), provided that such support is not of a kind that would ordinarily be given by the statutory authorities.



For the public benefit

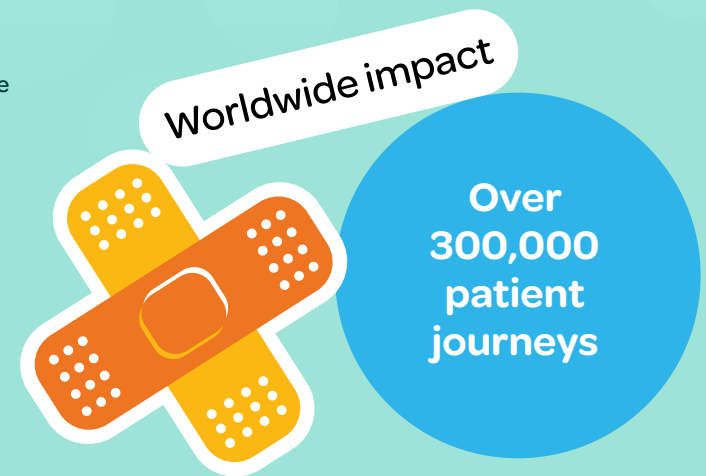
Our Trustees confirm that they have complied with the duty in the Charities Act 2011 to have due regard for the Charity Commission's general guidance on public benefit.

In setting our objectives and planning our activities our Trustees have again given careful consideration to the Charity Commission's general guidance on public benefit.

Each year, over 300,000 patient journeys are made to Sheffield Children's NHS Foundation Trust from all over the world. Charity funding is available for every discipline within the hospital trust. As a result, public benefit sits broadly across all patients, their families and the local communities that they come from.

In addition, charity funding of medical research is invested into strategic projects that are most likely to lead to further nationally funded research. Research findings from Sheffield Children's are published in peer medical journals. This has the result of widely disseminating research findings across the research community, resulting in worldwide impact and public benefit.

We have cared for over 61,000 patients in our Emergency Department; over 222,000 through Outpatients on all sites and undertaken over 25,000 operations and procedures.



Meet our Trustees

The Children's Hospital Charity's Trustees help oversee its long-term strategy, as well as contributing to and supporting the management of the Charity, ensuring it delivers significant income to **improve children and young people's lives.**



Jonathan McMahon (Chair of The Children's Hospital Charity, appointed 31st July 2023)

Jonathan is an experienced executive and non-executive director, having held senior positions in UK and EU financial institutions. He was also previously a Trustee of National Star, a charity supporting young people with disabilities. He was born in Sheffield and lives in the city with his family.

Jonathan leads the Charity's Board as it continues to raise vital funds to help provide specialist treatment, life-saving equipment, new facilities, a comfortable environment, and pioneering research, which changes paediatric care for thousands of children from across the world.



Ruth Brown

Ruth is Chief Executive of Sheffield Children's NHS Foundation Trust, which specialises in providing integrated care for children and young people with an increasing focus on health inequalities. She is also a Trustee of Voluntary Action Sheffield and The Children's Hospital Charity.

Ruth has spent her entire career in the NHS working in regional and local organisations in both provider and commissioning roles. As CEO for Sheffield Children's NHS Foundation Trust she leads an organisation of more than 4,000 colleagues who strive to provide a healthier future for children and young people through both physical and mental healthcare and community services.

She believes deeply in the power of partnerships and collaboration and is currently the lead CEO for the South Yorkshire Acute Federation and South Yorkshire Children & Young People's Alliance, as well as the Co-Chair of the National Children's Hospital Alliance.



Mark Rooker

Mark is Head of Operations for Online Learning at Sheffield Hallam University. His role involves launching and developing a variety of online learning courses to national and global audiences. Mark has worked in various commercial, consultancy, sales and marketing roles throughout his career, for a number of charities and world-leading organisations.

Mark's involvement with The Children's Hospital Charity began in 2003, when he supported a fundraising campaign through his employer. In 2012, he became a volunteer for the Charity, and in 2019 he was elected as a Public Governor at Sheffield Children's NHS Foundation Trust.



John Warner

John qualified with BHP Chartered Accountants in 1980, before becoming a partner in 1987. John later became joint managing partner in 2009, and sole managing partner from 2011-2019. During this time BHP grew to be the largest independent firm in Yorkshire.

John retired from BHP in January 2023 and now focuses on a number of non-executive and advisory roles, incorporating strategic business and succession planning.

As well as his role at this charity, John is a Trustee at Sheffield City Trust, a charity responsible for Sheffield's leisure and entertainment facilities, and a Director of Finance Yorkshire, a £65million gap fund for growth and loan finance.



Professor David Barnett

David was a Consultant Clinical Scientist and Professor of Diagnostic Haematology, having worked in the NHS for 42 years before retiring in 2018. He worked within the Haemato-Oncology Diagnostic Service at the Department of Haematology at Royal Hallamshire Hospital, which serves 2,000,000 people. He was also, during his time within the NHS, Director of the United Kingdom National External Quality Assessment Scheme for Leucocyte Immunophenotyping (UK NEQAS LI) that provides External Quality Control (EQA) to over 4,000 international clinical laboratories; he has published and lectured extensively in this area.

David is currently the Director of EQA International Ltd, working closely with the NHS to provide quality assessments to international clinical laboratories.



Professor Amaka Offiah

Amaka is Professor in Paediatric Musculoskeletal Imaging, and Consultant Paediatric Radiologist at the University of Sheffield and Sheffield Children's. Professor Offiah has published over 150 peer-reviewed articles, book chapters and books, and given over 250 invited national and international lectures.

Professor Offiah is the co-chair of the University of Sheffield's Race Equality Charter application Executive Committee, and Director of Wellbeing, Equality, Diversity and Inclusion for the Faculty of Medicine, Dentistry and Health. She is the first female, and first person from an ethnic minority background, to be a Managing Editor of the international journal Paediatric Radiology.



Rachel White

Joining Henry Boot PLC in 2001 as a Graduate Trainee, Rachel has gained various external qualifications whilst working her way up to the roles of Group HR Manager in 2010, Head of HR in 2015 and HR Director in 2022. Rachel is directly involved in supporting The Children's Hospital Charity through her employer.



Sarah Jones (resigned 31st December 2023)

Sarah was appointed as Chair of the Board of Directors at Sheffield Children's in September 2016, after holding a non-executive director role on the Board from August 2008.

She also Chairs the Council of Governors, the Board Nominations and Remuneration Committee, and the Trust's Organ Donation Committee.

Outside of the Trust Sarah is Chair of Realise, a national apprenticeship provider, and she also Chairs the South Yorkshire Mental Health, Learning Disabilities & Autism Provider Collaborative.



Paul Firth (Chair of The Children's Hospital Charity, resigned 31st July 2023)

Paul has more than 35 years of experience as a commercial lawyer, and has advised many large institutions, companies and local authorities on developments and general commercial matters.

Paul is currently Head of Legal at Curvalux Inc., having been a senior figure at DLA Piper and, more latterly, Irwin Mitchell over many years.

Paul stood down from his role as Chair of The Children's Hospital Charity in 2023, after 25 years. During his term, he has overseen the Charity raise a staggering £50million, and the subsequent successful completion of numerous fundraising appeals and projects, including the transformation of four world-class wards, as well as a new Safeguarding Support Unit, and a new Haematology and Oncology ward.

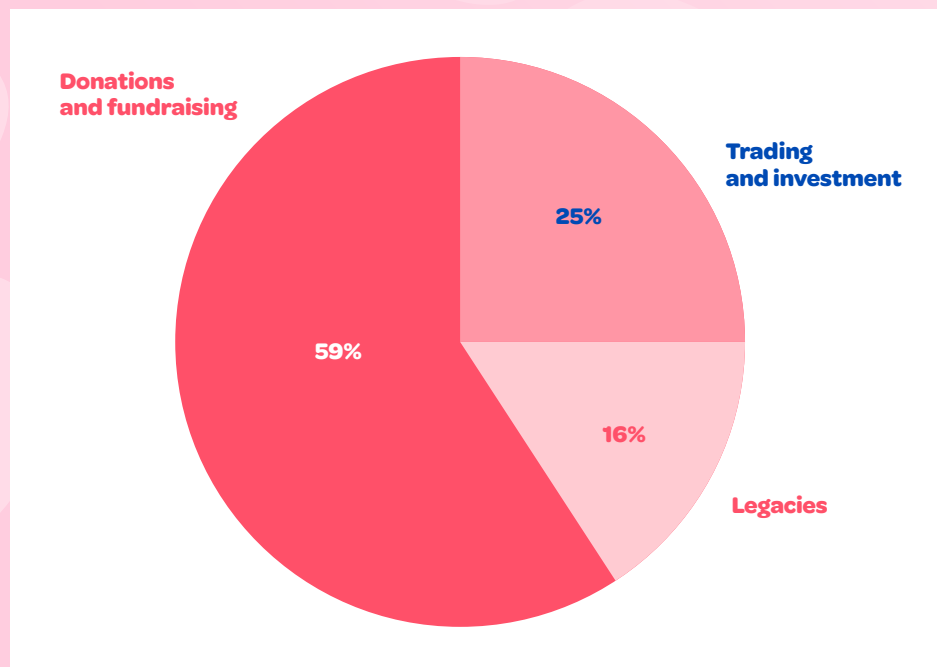
2023/24 in Review

Our highlights, achievements and activities



Facts and Figures

Despite the challenges brought about as a result of the cost-of-living crisis, the Charity continued to benefit from outstanding support and raised over £4 million to help enable Sheffield Children's to remain at the forefront of paediatric care.



Donations and fundraising

We are so grateful to the incredible companies, groups and individuals who have supported us this year. This includes via:

- Snowflakes across Sheffield Children's and South Yorkshire
- Pyjama Day
- Sponsored runs, walks, and head shaves
- Corporate fundraising and Charity of the Year events
- Donations from Trusts, Foundations and our group of philanthropists, The Children's Champions.

Trading

This includes money raised from merchandise (bought at the hospital site, online or at till points) and at charity fundraising events.

Legacies

Gifts arising from Wills form a significant part of the Charity's income profile, and are an important investment in the future of the health of the children served by the Trust. This includes residuary gifts (where we receive a share of the estate) as well as pecuniary gifts (gifts of specific amounts). Gifts left in wills ranged from £250 to £165k in 2023/24.

NCCHT



In early 2023 we announced how delighted we are to be a key partner and funder of an exciting new project at Sheffield Olympic Legacy Park - the **National Centre for Child Health Technology (NCCHT)** – which will be run by Sheffield Children’s NHS Foundation Trust.



What is the NCCHT?

The NCCHT will be a place to develop world-leading research and build new technologies to solve the biggest challenges in children's healthcare. It will bring together children, clinicians, inventors and engineers under the same roof, with state-of-the-art facilities for manufacturing, digital development and the opportunity to deliver Sheffield Children's clinical care.

What will happen there?

Robotics, virtual reality and artificial intelligence are changing our lives. At NCCHT, these will be used to change how we care for children. The Centre will be a place to create, test and put into practice these and other child health technologies.

NCCHT will have a virtual reality suite, creative space to develop ways to care for people remotely and the opportunity to test new prototypes.

It will be a space to connect young people, families, academics, engineers, industry, creators and healthcare professionals under one roof, to solve the big problems in healthcare.

Who will benefit?

The vision at Sheffield Children's is for local children and their families to benefit from the latest improvements in healthcare. As part of the Olympic Legacy Park, NCCHT will drive employment and develop the skills of our local communities here in Sheffield. There will be world-class healthcare facilities on site, so some patients at Sheffield Children's will receive their healthcare there.

The NCCHT will be more than a building. It will bring together a community of innovators across the world, working and collaborating virtually, as well as being physically based on our site.

The technologies that we develop will benefit children today and in the future, across the world.

How much do we need to raise?

The Children's Hospital Charity has launched an appeal to raise £2m to contribute towards the cost of the £22m cost of the centre.



Snowflakes 2023



Hundreds of sparkling snowflakes were lit up for Sheffield Children's across nine locations around South Yorkshire and Derbyshire, raising a project record of over £376,000 - the highest amount since the campaign first began.

Initially starting with just eight decorations in 2004 on the Western Bank site at Sheffield Children's, we now have over 460 snowflakes across nine different Trust and external sites, with plans to expand even further in 2024/25.

Raised	£376,762	Snowflakes available	506	Snowflakes sponsored	349
		Snowflakes with tags on	471	Snowflakes gifted	122

Amount raised per site

Sheffield Children's Hospital	£310,831.25	Chesterfield	£2,809.00
City Hall	£21,620.80	Alhambra	£1,952.93
Ryegate	£2,350.00	Brinsworth	£600.00
Becton	£4,350.00	Extra (Switch on, Match Funding, Donations)	£6,537.81
St John's	£8,050.00		
Crystal Peaks	£7,270.00		

Fundraising events within the community

Fundraising events within the community have seen real successes over the last year, generating donations of almost £1million thanks to the generosity and dedication of supporters.

This year has seen an increase in the number of people taking on active challenges for the Charity, with over £133k raised from adrenaline-fuelled activities such as runs, abseils and sky dives. The Charity's work with community groups and associations has also raised over £178k, signalling a positive upturn following a difficult few years during the cost of living crisis.

Corporate fundraising

The Charity's work with corporate and special groups has raised over £1.2million through various initiatives, including some fantastic special events, workplace fundraising, donations, and the management of support from Patrons and Ambassadors.

This year also saw the launch of the Bright Young Dream campaign, spearheaded by Patrons Dame Jessica Ennis-Hill, Dan Walker, Jon Richardson and Lucy Beaumont. The campaign is focussed on raising funds and awareness around children's mental health

The Charity Hub and trading

Our trading arm raised £101k by selling merchandise on and offline, as well as at events and third-party organisations.

This included a combination of corporate contributions and a range of branded items such as hoodies, mugs and stationery, which also provided patients in the hospital with sensory, colourful cheer for their visits. We also launched a successful partnership with local chocolatiers, Bullion, who helped create a collection of bespoke chocolate snowflakes to complement our Snowflakes campaign.



Major donors

We are incredibly grateful to our supporters who donate significant and generous gifts.

Whether this be through our Children's Champions programme, via attendance at one of our many special events, or via fundraising on one of our bespoke committees. Our major donors remain a unique group of individuals, companies and private family trusts, all sharing the same passion – to help patients and their families at Sheffield Children's.

Trust and Grants

Whilst gifts have decreased in this income stream across the charity sector as a whole, monies from grant making organisations have continued to make a significant difference to patient care.

Key successes include a £100k gift towards Sheffield Children's Hospital's B-Floor garden development, over £60k towards medical equipment and patient workshops, and the first installment of a £50k pledge towards research. We remain grateful to all those organisations who have continued to support us over the past 12 months, enabling Sheffield Children's to remain at the forefront of paediatric care.

Legacies

16% of the income raised during 2023/24 was raised thanks to legacy donations, totalling more than £630k. 154 wills were created with the Charity's partnership with Irwin Mitchell Solicitors, raising £4.5k



Awards

Charity of the Year

The Yorkshire Children of Courage Awards 2023

Outstanding Achievement

(for supporter Layton Cawthorne)

The Yorkshire Children of Courage Awards 2023

Special Recognition Award

(for ambassador Alex Gardner)

Charity Today Awards 2023



Facilities

Helipad



In Summer 2024, children who need emergency medical care will benefit from a new £6m helipad on the roof of Sheffield Children's Hospital thanks to the generosity of the public, charities and local businesses supporting The Children's Hospital Charity.

Fundraising for a helipad began in 2018 as part of the wider Build it Better capital appeal, which ambitiously seeks to deliver a number of projects to build a better future for everyone who visits the Trust. In 2023, the Charity secured the final funding needed to reach the £6million target for the helipad project. This sum was achieved through the Charity's tireless work with grant making bodies, patients, families, colleagues, corporate partners and fundraisers. We are so grateful to all supporters and donors, including the BNA Charitable Trust and Westfield Health, who donated £50,000 and £95,000 respectively. A huge contribution to the appeal also came via a generous donation from HELP Appeal, which totalled a staggering £2,812,500!

The helipad is a vital Charity funded project, and will crucially reduce delays for patients who need urgent critical care from across South Yorkshire, Derbyshire and Lincolnshire, as well as offering privacy and dignity.

Sheffield Children's is one of only five dedicated Major Trauma Centres in England, and is open 24 hours a day, seven days a week. Air ambulances currently have to land in Weston Park, where trauma patients are then stretchered across a busy road under a police escort before entering the Emergency Department.

The helipad on the roof will also mean patients can land and be transferred any time, and in any weather.

Building work is almost complete, and the new helipad should be operational by Winter 2024.

It will allow Sheffield Children's to become far more accessible as a regional centre. Air ambulances will be able to land directly onto the hospital, meaning patients will have quicker and easier access to the urgent care they need. The new helipad means we can get critically ill or injured patients to the right place, with the right team and provide vital early care and management. 24

Specialist Equipment

In 2023/24 the Charity granted funding of over **£270k** for medical equipment at Sheffield Children's, including:

Lung Function Testing Box - **£56,328**

The Respiratory Physiology Service needed funds for new lung function equipment, in order to effectively diagnose, monitor and manage respiratory conditions in patients.

As one of few paediatric respiratory function testing centres in the UK, the new equipment allows the service to maintain and enhance its reputation for delivering the highest quality testing.

2x Sentec digital monitors - **£15,000**

These special monitors measure how well lungs get oxygen in and carbon dioxide out.

Embrace, our specialist transport service, use these on each incubator in their ambulances as a non-invasive way of monitoring the breathing of babies who are being transferred.

2 x portable ultrasounds for ED and PICCU - **£71,905**

These have been funded by Clay Shoot 2023.

The Sonosite Ultrasound PX model has increased functionality to the existing version used. The PX model can be used on tiny premature babies, and can also be used to check any paediatric heart.

Most staff are trained to use the Sonosite ultrasounds, so they will enable staff to manage situations much more efficiently, which in turn will increase patient safety, especially in urgent and trauma cases.

Ryegate Hi-Lo Bed - **£6,692**

A brand new specialist bed has been provided for children with complex neuro-disabilities, multiple physical and learning disabilities, and life-limiting conditions.

The bed is two metres tall and is enclosed to give children a calming and safe environment. It has an adjustable height to make it easier to access for staff when preparing the bed and when caring for patients.

In 2024/25 the Charity will be funding:



Laser pen - £7,750

The Charity will fund a second laser pen for our Haematology and Oncology Ward to provide treatment of oral mucositis for children under chemotherapy and radiotherapy.

Oral mucositis is one of the most common, debilitating complications of cancer treatments that can cause pain, inability to eat and increased risk of infection. Having an additional laser pen will enable us to treat more patients and offer continuous care.

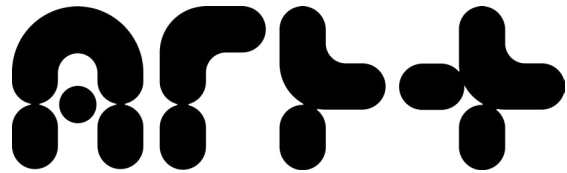
Specialist MR1 ventilator - £33,500

The MRI suite requires special equipment to look after children safely while under anaesthesia.

This additional piece of equipment enables expert care of smaller and sicker babies whilst they are ventilated.



Art+



Art+ is our Charity-funded arts programme, which makes the clinical more comfortable by transforming our hospital's walls and spaces with bright art and creative design, helping children recover in an environment tailored to them.

The programme also provides workshops for youngsters as a distraction aid before an operation or appointment, or to break up long stays on the wards.



This year Art+ engaged over 1,640 patients, family members and staff in a variety of creative activities to improve wellbeing, and bring smiles to the wards. This included a six-week workshop programme on the Neonatal Surgical Unit (NSU) with Concerteenies, who deliver specialist, quality live music for babies and their caregivers.



Significant investment has been made in the development of key spaces, with Art+ spending over £115k on the full refurbishment of 12 staff rooms, across five different sites at Sheffield Children's, as well as the transformation of the Emergency Room at CAMHS ED. Improvements have also been made to Sheffield Children's Clinical Research Facility. Focussing on the patient journey from arrival to departure, including reception, corridors, multiple treatment rooms and the playroom, Art+ worked with local designer, Jon Cannon, to give particular attention to the differing sensory needs of children attending the Facility, installing bespoke murals and furniture to create a gentle and welcoming environment.

Art+ also worked in partnership with Hybrid 3 and Becton School on a special edition of their 'Story Bombs' project. With support from the Hybrid 3 team, a fantastically diverse group of young people wrote, recorded and soundtracked their own podcast. The sessions were designed to be as inclusive as possible, with all patients able to contribute musically, and communicate their ideas using visual tools and support from school staff.

Colleague wellbeing continues to be a priority, with 2023 seeing the return of the popular Art+ festive wreath making sessions for colleagues at Sheffield Children's. These were attended by more staff than ever before and received overwhelmingly positive feedback from participants.



Research

In 2023/24 the Charity supported research roles & projects, from developing new medicines to pioneering health technologies, research is fundamental in ensuring that we provide the best treatment possible for patients in our care.

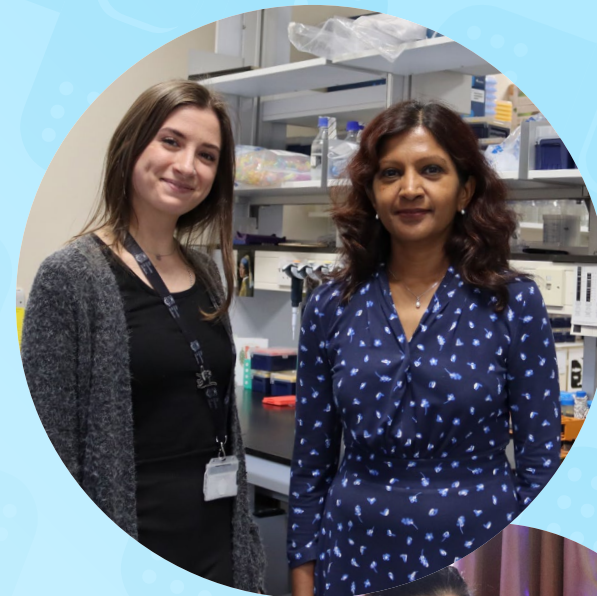
Through research studies, children and young people can access the latest treatments and technology, to provide the most up to date care for our patients. Sheffield Children's has established itself as an international leader in the field, having been successful in developing cutting edge therapies across a wide range of specialist areas.

Our Clinical Research Facility is home to pioneering paediatric trials across a wide portfolio of clinical specialities, such as Sheffield Dermatology Research, which is one of the leading centres, internationally, for clinical trials. An integrated service for atopic dermatitis has been developed to help manage the most complex patients by combining treatment, allergy and immunology, and psychiatry.

Research Fellow in Sleep Medicine and Narcolepsy

£16,000

This Charity-funded role will support an exciting new project with Cambridge University, which aims to provide the most comprehensive clinical description of childhood narcolepsy to date, and investigate causative factors, with the goal of finding new treatment strategies.



Gene Therapy study into a rare type of brittle bone disease known as Cole-Carpenter Syndrome

£63,075

Cole-Carpenter syndrome was first identified in two infants with multiple bone deformities in 1987. Thanks to changes in gene screening in 2015 the two patients were reported to have changes in one of their genes, showing that this was the cause of the syndrome.

This research aimed to understand and find new treatments for Cole-Carpenter syndrome by creating an animal model. Sheffield Children's has expertise in clinical genetics and bone diseases, so these were brought together to develop a new zebrafish model. The model allowed the research team to investigate new drugs that improve bone development. The initial study has allowed the team to apply for further funding with other research bodies, so these results can eventually be fed back into clinical care and improve the quality of life for patients suffering from these bone conditions.



A pilot study into ventilation for children with bronchitis using an MRI

£42,144

Protracted bacterial bronchitis (PBB) is an infection in the lungs causing children to have a wet cough for more than four weeks. PBB is also known to start before, and cause other, lung diseases, and to affect children's quality of life.

It is difficult to know if a child has PBB. It is normal to have to perform a bronchoscopy (looking in the lungs with a camera) and a type of lung scan called a CT to diagnose PBB. CT stands for Computed Tomography and is a medical imagery technique used to obtain detailed internal images. These tests involve children being put to sleep under general anaesthetic, or exposed to radiation, and so are not performed often. It is difficult to treat the condition and antibiotics are given for many weeks to help children get better. The only way to know if a child is better is when their parents report their cough has improved which is often unreliable.

In this study, children breathed in a gas called xenon, and the research team took pictures of children's lungs using a type of scan called MRI instead. This is a safe alternative, which eliminated the need for general anaesthetic, and meant children were not exposed to radiation. If there was phlegm blocking parts of the lungs, the gas was unable to get through and the team could still identify any blockage. to get through and the team could see the blockage. This type of picture has been proven the best way to measure early lung disease in children so this study aims to test if it is suitable for PBB too.

A study into the characteristics of childhood narcolepsy

£10,309

The Narcolepsy team at Sheffield Children's are leaders in their work, with children travelling from hundreds of miles to receive care with them. Narcolepsy is a lifelong neurological sleep disorder, characterised by excessive daytime sleepiness and attacks of muscle weakness triggered by emotions. Children experience fractured nighttime sleep, hallucinations, sleep paralysis and weight gain. These symptoms have a detrimental effect on mental health, quality of life, relationships, and school performance. There is a lack of research methods for improving the lives of children with narcolepsy.

The series of studies conducted at Sheffield Children's aimed to provide the most comprehensive clinical description of childhood narcolepsy to date and investigate potential causes, with the aim of finding new treatment strategies.



Is a type of fluorescent imaging safe and accurate for predicting testicular torsion?

£23,410

Testicular torsion is a time critical condition for children and young people and is difficult to diagnose.

Missing it means that a child will lose a testicle. Currently there are no good diagnostic tests, only tests that delay the child's journey to theatre, which puts them at further risk of losing the testicle. Most boys with a painful testicle get a surgical exploration to see if it is torsion and to twist and fix it. Up to 85% of children having this surgery will not have testicular torsion and will not have needed surgery at all. Charity funding has allowed researchers to test whether a new, low risk, fast investigation through specialist fluorescent imaging can be used to diagnose the problem, meaning no torsions are missed and less children have unnecessary surgery.



Financial Review

At a Glance

Our financial performance in year: the Statement of Financial Activities at a glance.

For the year 2023/24, our total income from all sources decreased by £76k when compared to 2022/23, in what has been a challenging year for fundraising due to continued pressure on the cost of living. Expenditure on the much-anticipated Helipad project crystallised in 2023/24 resulting in a higher income-cost ratio for the year.

For a number of years the Charity has been fundraising to construct a helipad at Sheffield Children's, building up enough funds for this large capital project. The works to construct the new helipad took place throughout 2023/24, and so funding was distributed to the Trust to fund this project at various points throughout this financial year. This means that expenditure on Charitable Activities is much higher than in previous years.

Income	2023/24	2022/23
Donations and Legacies	£3,021,875	£3,421,029
Other Trading Activities	£687,344	£532,991
Investments	£300,765	£131,531
Other Income	£0	£0
Total Income	£4,009,984	£4,085,551
Expenditure	2023/24	2022/23
Charitable Activities	£5,313,647	£2,018,800
Raising Funds	£1,695,345	£1,453,686
Other	£27,346	£27,342
Total Expenditure	£7,036,338	£3,499,828
	2023/24	2022/23
Net Gain / (Loss) on Investments	£133,396	(£265,161)
Total Net Income / (Expenditure) for Year	(£2,892,958)	£320,562
	2023/24	2022/23
Funds carried forward from prior year	£11,392,645	£11,072,083
Closing Funds for Year	£8,499,687	£11,392,645
<i>Build a Better Future Capital Appeal carried forward</i>	<i>£2,607,744</i>	<i>£6,817,724</i>
<i>Other funds carried forward</i>	<i>£5,891,943</i>	<i>£4,574,921</i>

How much income did we raise?

The Children's Hospital Charity can only continue to support the leading work of Sheffield Children's NHS FT for as long as we generate the level of funds required.

Most of our income is sourced from the efforts of the general public, made possible by our hard working and dedicated fundraising team.

Donations and legacies

Our largest source of income is the generosity of public and local companies keen to support the local community and invest in the future of one of the regions greatest assets. In detail:

Corporate donations and gifts from the public (£1,944k) (2022/23: £1,697k) - the charity is extremely grateful to the companies, groups and individuals that have donated in 2023/24 and who have given their time, money and effort to push their fundraising to the maximum. Thousands of donations were received this year, via a multitude of channels such as Just Giving, Facebook and personal cheques, ranging from pennies to many thousands of pounds.

Major gifts (£243k) (2022/23: £164k) - The charity is indebted to our philanthropic supporters, (including Children Champions) who form a unique group of individuals, companies and private family trusts all sharing in one passion, to help our patients and their families at Sheffield Children's NHS FT.

Trusts (£203k) (2022/23: £978k) - We are extremely grateful to all the Trust and Grant Making organisations who generously donated during 2023-24. Our income was lower than prior years due to the completion of the Helipad Appeal, which culminated in a gift of £563k.

Legacies (£631k) (2022/23: £582k)- gifts arising from wills form a significant part of the charities income profile and are an important investment in the future of the health of the children served by the Trust.

Other trading activities

Charity organised events raised £493k (2022/23: £329k). The sale of merchandise & giftware on the hospital site, online or at till points, and royalties raised £195k (2022/23: £204k).

Investments

Prudent management of funds not immediately required by the Trust and held in an investment portfolio (managed by Investec Plc.) has generated interest, dividend and disposal income of £54k in year (2022/23: £118k). Fund management reports a gain on investments of £133k (2022/23: £265k loss).

Investments are secured in a low-medium risk portfolio. The charity is committed to maintaining a broad investment portfolio to generate long term income and capital growth.

Current account interest £25k (2022/23: £14k). Treasury Call Account £222k (2022/23: £0).

What are our costs?

Charitable Activities

These are costs related to allowing the charity to meet its objectives. These include direct costs and grants of charitable expenditure, as well as indirect costs associated with charitable expenditure such as salaries.

Medical research (£201k) (2022/23: £95k) - we have committed to 4 research projects plus AWRC funding & continued PhD support.

Department / Ward funds (£248k) (2022/23: £159k) - funds supplied to individual wards and departments have been utilised to provide crucial support groups for patients and parents, essential staff training and new equipment (medical and non-medical) that would otherwise not have been able to have been purchased without the support of our charity.

Restricted funds £149k (2022/23: £83k) were used to fund equipment (medical and non-medical), support staff, patient wellbeing & bespoke Art+ workshops as per the donors' wishes.

Annual projects (£153k) (2022/23: £149k) - projects include the Art+ scheme (inclusive of salaries and workshops), Christmas gift giving for wards and departments and additional resources to enable Play Specialists to enhance the hospital experience for patients and their loved ones.

Capital expenditure (£4,495k) (2022/23: £1,505k) - Helipad building works.

Raising Funds

Costs relating to the running of activities designed to raise funds for the Sheffield Children's NHS FT including salaries for staff not performing charitable activities, training, IT costs, travel and expenses for volunteers and professional fees for the charity such as insurance and accountants.

Costs are allocated to the costs of raising donations and charitable activities on the basis of staff time. Raising funds includes trading expenditure, such as purchasing charity merchandise.

Our financial health: the Balance Sheet at a glance

The assets and liabilities of our charity as at 31st March 2024 are stated below:

	2023/24	2022/23
Fixed Assets	£6,759,421	£6,631,278
Net Current Assets	£1,740,266	£5,074,976
Non Current Liabilities	£0	(£313,609)
Total Net Assets	£8,499,687	£11,392,645

Unrestricted Undesignated Income Funds	£3,123,280	£2,183,272
Unrestricted Designated Income Funds	£4,669,344	£6,786,334
Restricted Income Funds	£661,779	£2,337,444
Profit Retained in Subsidiary	£45,284	£85,595
Total funds	£8,499,687	£11,392,645

Fixed assets

Predominantly comprise of investments held in a low-risk portfolio, managed by Investec Wealth and Investment Limited, an intangible asset relating to our ThankQ Customer Relationship Management software, and IT server forming a tangible asset, and Marlborough House office space (purchased in 2019/20).

Net current assets

Represent cash held on deposit plus other assets of the charity reasonably expected to be turned into cash, such as trading stock and debts due to be recovered, less any outstanding liabilities and expenses chargeable in year.

Unrestricted undesignated income funds

Such funds available to be spent at the discretion of the Charity and its Trustees with non-binding preferences of donors.

Unrestricted designated income funds

Consist of 86 separate funds, which have been set up to channel the specific intentions of gifts received towards wards, departments and projects. Through designation of these funds, we ensure that the gifts are spent in those specific areas of the Trust.

Restricted income funds

Represent money which we can only use for specified purposes, as per the donor's wishes

Profit retained in subsidiary

This relates to retained profits from the Theo Bear trading subsidiary.

How do we manage our funds?

How do we manage our funds?

Reserves Policy

Reserves describe that part of our charity's funds which are freely available and exclude restricted funds, endowments and any part of unrestricted funds not readily available for spending such as fixed assets.

Trustees have established a reserves policy in order to:

- honour our commitments and deliver our business plan
- establish and provide long term support to Sheffield Children's NHS FT
- protect the continuity of our work in the event of a shortfall in income
- provide the funds needed to replace assets of the charity

The charity aims to hold undesignated reserves sufficient to cover six months operational costs with an aspiration to hold more where there is no impact on immediate funding requirements. On this basis the estimated requirement for six months' operational expenditure, including wages and core running costs, equates to circa £450k. Designated funds for specific projects could potentially be redirected if the need arose.

Available reserves are calculated as the part of our charity's unrestricted funds freely available after accounting for designated funds earmarked for specific projects. At the year end, Trustees have maintained somewhat higher general unrestricted, undesignated reserves in the knowledge that the funding requirement for the Build a Better Future appeal is a significant commitment and specific funding requirements are being agreed with the Trust. Funding will be designated when project costs are known and required.

Reserves at the end of the reporting period are calculated as follows:

	2023/24	2022/23
Total Unrestricted Funds of	£7,837,908	£9,055,201
Less: Designated Funds of	£4,669,344	£6,786,334
Less: Fixed Assets of	£497,188	£526,344
Total Reserves	£2,671,376	£1,742,523

Grant Making Policy

Funded projects are decided upon by the Trustees of the charity in line with our objectives. Projects we fund must support and enhance the work of the Trust and not undermine the provision of the NHS. Grants are made in accordance with charity law, our constitution and the wishes and directions of donors. In making grants, we endeavour to reflect the wishes of patients and staff by directing funds towards areas most in need.

General funds (undesignated) – these funds are received by the charity with no particular preference expressed by donors. Grants can be targeted on projects in areas of the hospital that do not have available designated funds to assist them.

Designated funds – are established for a particular part of the hospital or activity nominated for support. Hospital staff are encouraged to identify how they may best utilise the funds available, these funds can be spent at any time.

Designated research funds – these are funds which are designated for specified research projects. Applications are invited once per year. Grants are normally awarded for between twelve months and three years.

Risk Management

Our Trustees have assessed the major risks to which the charity is exposed, in particular those related to the operations and finances of the Trust and are satisfied that systems are in place to mitigate our exposure to the major risks.

A key risk for the charity is the current economic climate and the uncertainty surrounding global events, such as conflict overseas and the rising cost of living. These risks are mitigated through regular review of the investment portfolio with investment managers to ensure the level of risk within the investments held is minimised and ethical considerations are met. With this in mind, Trustees have a risk-averse approach to investments, maintaining a low risk portfolio. Future financial performance and position is likely to be determined by the state of the economy, both in terms of the success and stability of the investments held, as well as the level to which donors feel as though they are able to support our charity. While steps can be taken to manage the risk, the risk still remains and could make achievement of our objectives challenging in both the short to medium term.

Report of The Management Committee 2023/24

The Management Committee present their annual report together with the consolidated financial statements of the Charity and its subsidiary for the year ending 31 March 2024 which are also prepared for Companies Act purposes.

The financial statements comply with the Charities Act 2011, the Companies Act 2016, the Memorandum and Articles of Association, and Accounting and Reporting by Charities: Statement of Recommended Practice applicable to charities preparing their accounts in accordance with the Financial Reporting Standard applicable in the UK and Republic of Ireland (FRS 102).

The Directors of the charitable company are its Trustees for the purposes of charity law. The Trustees who have served during the year and since the year end are detailed in the Reference and administrative details opposite.

Since the Charity qualifies as small under section 383, the strategic report required of medium and large companies under the Companies Act 2006 (Strategic Report and Director's Report) Regulations 2013 is not required.

Management Committee Trustees

Jonathan McMahon (Chair) (appointed 31st July 2023)

Professor David Barnett

Ruth Brown

Professor Cynthia Offiah

Mark Rooker

John Warner

Rachel White

Paul Firth (Chair) (resigned 31st July 2023)

Sarah Jones (resigned 31st December 2023)

Charity Registration Number: 505002

Company Number: 01224751 (England and Wales)

Registered Office and Address of Principal Office:

The Children's Hospital Charity, Sheffield Children's Hospital, Western Bank, Sheffield, S10 2TH

Company Secretary: John Armstrong (also Chief Executive Officer)

Auditors: Hawsons Chartered Accountants, Pegasus House, 463A Glossop Road, Sheffield, S10 2QD

Bankers: Lloyds TSB Bank plc, Church Street, Sheffield, PO Box 1000, BX1 1LT

Investment Management: Investec, Beech House, 61 Napier Street, Sheffield, S11 8HA

Our Fundraising Practices

The Children’s Hospital Charity aim for the highest standards in all fundraising activities undertaken. Our dedicated team of fundraisers organise fundraising events and co-ordinate the activities of our supporters across the hospital and in the wider community both regionally and beyond. During the year, the Charity has not used a professional fundraiser or commercial participator to carry out any of its fundraising activities.

We are registered with the Fundraising Regulator and are committed to complying with its Fundraising Promise for their donors and the public. The Charity have agreed to ensure their fundraising is legal, open, honest and respectful and that the Fundraising Regulator badge is displayed on fundraising material to show the commitment to good practice.

Our team will do all they can to ensure that their fundraisers, volunteers and any third parties comply with all fundraising regulations and this promise to their supporters. The Charity does not carry out telephone or door to door fundraising, ensuring that activities are not unreasonably intrusive or persistent. During the year there have been no failures to comply with the standards.

The Children’s Hospital Charity is registered with the Fundraising Preference Service (FPS) and donors can update their fundraising mailing preferences through this scheme at any time. We monitor donations made to our charity using our CRM donor management system.

During the year we received no formal complaints as a result of our fundraising activities. We do, however, know that there may be times when we don’t meet our own high standards. If this does happen, we want to know about it, deal with it and hopefully stop it from happening again. We take complaints very seriously and we are always grateful to hear from people who are willing to take the time to help us be even better. Details of our complaints procedure is available on The Children’s Hospital Charity website.

The Children’s Hospital Charity do not accept donations if they know or have good reason to believe that a donor lacks capacity to make a decision to donate, or is in vulnerable circumstances and therefore unable to make an informed decision. Under 18s cannot independently fundraise for the Charity without an adult.

Our Structure, Governance and Management

The Children's Hospital Charity is a registered charity, number 505002, and a company limited by guarantee. It is governed by its Memorandum & Articles of Association (dated 1975 and subsequently in 2017).

The members of the Management Committee, as defined in the memorandum and articles, act as the Directors of the company and, as the organisation is a registered charity, act also as its charitable trustees. The members of the company are responsible for the election of the Management Committee.

Members of the Management Committee are elected for a four year period and can be eligible for re-election at the third AGM. Newly appointed members are instructed in their duties by the Chair of the Charity and the Charity Director issues a Trustee Pack that informs them of their legal responsibilities and the expectations from the Charity in their role as Trustee.

Members of the Management Committee at the date of approval of this report are listed on page 41. Each member has an equal voting right.

No Trustee received any remuneration from the Charity in the financial year 2023/24.

Organisational Structure

The Children's Hospital Charity is currently administered by a board of 8 unpaid Trustees which is made up of representatives from the hospital and the wider community. The Chief Executive Officer reports directly to The Board of Trustees and manages the day-to-day business of the Charity along with 35 employees (25 full-time, 10 part-time) and several regular volunteers.

Trustees are elected or co-opted by the Board for terms of up to 4 years (renewable) in accordance with the updated Articles of Association dated June 2016 (subsequently updated in 2017)

Key management personnel as described throughout are the members of the senior management team who control the day-to-day operation of the Charity. The pay for the Chief Executive Officer is agreed by the Charity Trustees and the pay and conditions for the rest of the key management personnel is set by the Chief Executive Officer, with overall budget agreed with Trustees. The pay and conditions of key management personnel are benchmarked against similar positions in the sector.

Responsibilities of Our Management Committee

The Management Committee (who are also directors of The Children's Hospital Charity for the purposes of company law and trustees for the purposes of charity law) are responsible for preparing the Management Committees' Annual Report (including the Strategic Report) and the financial statements in accordance with applicable law and United Kingdom Accounting Standards (United Kingdom Generally Accepted Accounting Practice).

Company law requires the Management Committee to prepare financial statements for each financial year, which give a true and fair view of the state of affairs of the charitable company and of the incoming resources and application of resources, including the income and expenditure, of the charitable company for that period. In preparing these financial statements, the Management Committee are required to:

- select suitable accounting policies and then apply them consistently;
- observe the methods and principles in the Charities SORP 2019 (FRS102);
- make judgements and estimates that are reasonable and prudent;
- state whether applicable UK Accounting Standards have been followed, subject to any material departures disclosed and explained in the financial statements;
- prepare the financial statements on the going concern basis unless it is inappropriate to presume that the charitable company will continue in operation.

The Management Committee are responsible for keeping adequate accounting records that disclose with reasonable accuracy at any time the financial position of the charitable company and enable them to ensure that the financial statements comply with the Companies Act 2006. They are also responsible for safeguarding the assets of the charitable company and hence for taking reasonable steps for the prevention and detection of fraud and other irregularities.

In so far as the Management Committee are aware:

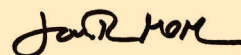
- there is no relevant audit information of which the charitable company's auditor is unaware; and
- the Management Committee have taken all steps that they ought to have taken to make themselves aware of any relevant audit information and to establish that the auditor is aware of that information.

The Trustees are responsible for the maintenance and integrity of the corporate and financial information included on the charitable company's website. Legislation in the United Kingdom governing the preparation and dissemination of financial statements may differ from legislation in other jurisdictions.

Auditors

Hawsons have indicated that they are willing to be reappointed at the forthcoming Annual General Meeting. We approve Trustees' Annual Report in our capacity as company directors.

On behalf of the Management Committee



Jonathan McMahon
Chairman

Independent Auditors' Report to the Trustees of The Children's Hospital Charity Ltd

Opinion

We have audited the financial statements of The Children's Hospital Charity ('the group and parent charitable company') for the year ended 31 March 2024 which comprise the Consolidated Statement of Financial Activities, the Statement of Financial Activities, the Group and Parent Charitable Company Balance Sheets, Consolidated Statement of cash flows, notes to the financial statements and significant accounting policies. The financial reporting framework that has been applied in their preparation is applicable law and United Kingdom Accounting Standards, including FRS 102 'The Financial Reporting Standard applicable in the UK and Republic of Ireland' (United Kingdom Generally Accepted Accounting Practice).

In our opinion, the financial statements:

- give a true and fair view of the state of the group and parent charitable company's affairs as at 31 March 2024 and of its incoming resources and application of resources for the year then ended;
- have been properly prepared in accordance with United Kingdom Generally Accepted Accounting Practice; and
- have been prepared in accordance with the requirements of the Charities Act 2011.

Basis for opinion

We conducted our audit in accordance with International Standards on Auditing (UK) (ISAs (UK)) and applicable law. Our responsibilities under those standards are further described in the Auditor's responsibilities for the audit of the financial statements section of our report. We are independent of the group and parent charitable company in accordance with the ethical requirements that are relevant to our audit of the financial statements in the UK, including the FRC's Ethical Standard, and we have fulfilled our other

ethical responsibilities in accordance with these requirements. We believe that the audit evidence we have obtained is sufficient and appropriate to provide a basis for our opinion.

Conclusions relating to going concern

In auditing the financial statements, we have concluded that the trustees' use of the going concern basis of accounting in the preparation of the financial statements is appropriate.

Based on the work we have performed, we have not identified any material uncertainties relating to events or conditions that, individually or collectively, may cast significant doubt on the group and parent charitable company's ability to continue as a going concern for a period of at least 12 months from when the financial statements are authorised for issue.

Our responsibilities and the responsibilities of the trustees with respect to going concern are described in the relevant sections of this report.

Other information

The other information comprises the information included in the annual report, including the trustees' report, other than the financial statements and our auditor's report thereon. The trustees are responsible for the other information contained within the annual report. Our opinion on the financial statements does not cover the other information and, except to the extent otherwise explicitly stated in our report, we do not express any form of assurance conclusion thereon.

Our responsibility is to read the other information and, in doing so, consider whether the other information is materially inconsistent with the financial statements or our knowledge obtained in the course of the audit, or otherwise appears to be materially misstated. If we identify such material inconsistencies or apparent material misstatements, we are required to determine (Cont.)

whether this gives rise to a material misstatement in the financial statements themselves. If, based on the work we have performed, we conclude that there is a material misstatement of this other information, we are required to report that fact.

We have nothing to report in this regard.

Matters on which we are required to report by exception

In the light of the knowledge and understanding of the group and parent charitable company and its environment obtained in the course of the audit, we have not identified material misstatements in the trustees' report.

We have nothing to report in respect of the following matters in relation to which the Charities (Accounts and Reports) Regulations 2008 require us to report to you if, in our opinion:

- the information given in the trustees' report is inconsistent in any material respect with the financial statements; or
- sufficient accounting records have not been kept; or
- the financial statements are not in agreement with the accounting records; or
- we have not received all the information and explanations we require for our audit.

Responsibilities of trustees

As explained more fully in the trustees' responsibilities statement set out on page 44, the trustees are responsible for the preparation of the financial statements and for being satisfied that they give a true and fair view, and for such internal control as the trustees

determine is necessary to enable the preparation of financial statements that are free from material misstatement, whether due to fraud or error.

In preparing the financial statements, the trustees are responsible for assessing the group's and parent charitable company's ability to continue as a going concern, disclosing, as applicable, matters related to going concern and using the going concern basis of accounting unless the trustees either intend to liquidate the group and parent charitable company or to cease operations, or have no realistic alternative but to do so.

Auditor's responsibilities for the audit of the financial statements

We have been appointed as auditor under section 144 of the Charities Act 2011 and report in accordance with the Act and relevant regulations made or having effect thereunder. Our objectives are to obtain reasonable assurance about whether the financial statements as a whole are free from material misstatement, whether due to fraud or error, and to issue an auditor's report that includes our opinion. Reasonable assurance is a high level of assurance, but is not a guarantee that an audit conducted in accordance with ISAs (UK) will always detect a material misstatement when it exists.

Misstatements can arise from fraud or error and are considered material if, individually or in the aggregate, they could reasonably be expected to influence the economic decisions of users taken on the basis of these financial statements.

Irregularities, including fraud, are instances of non-compliance with laws and regulations. We design procedures in line with our responsibilities, outlined above, to detect material misstatements in respect of irregularities, including fraud. The extent to which our procedures are capable of detecting irregularities, including fraud is detailed below:

(Cont.)

The group and parent charitable company is subject to laws and regulations that directly and indirectly affect the financial statements. Based on our understanding of the group and parent charitable company and the environment it operates within, we determined that the laws and regulations which were most significant included FRS 102 and the Charities Act 2011. We considered the extent to which non-compliance with these laws and regulations might have a material effect on the financial statements, including how fraud might occur.

We evaluated management's incentives and opportunities for fraudulent manipulation of the financial statements (including the risk of override of controls), and determined that the principal risks were related to the posting of inappropriate journal entries to improve the group and parent charitable company's result for the period, and management bias in key accounting estimates.

Audit procedures performed by the engagement team included:

- Discussions with management and those responsible for legal compliance procedures within the group and parent charitable company to obtain an understanding of the legal and regulatory framework applicable to the group and parent charitable company and how the group and parent charitable company complies with that framework, including consideration of known or suspected instances of non-compliance with laws and regulations and fraud;
- Reviewing minutes of Trustee meetings;
- Identifying and assessing the design effectiveness of controls that management has in place to prevent and detect fraud and non-compliance with laws and regulations;
- Challenging assumptions and judgements made by management in their significant accounting estimates.
- Identifying and testing journal entries, in particular any journal entries posted with unusual account combinations or posted by senior management.

A further description of our responsibilities for the audit of the financial statements is located on the Financial Reporting Council's website at: www.frc.org.uk/auditors/

audit-assurance/auditor-s-responsibilities-for-the-audit-of-the-fi/description-of-the-auditor-s-responsibilities-for. This description forms part of our auditor's report.

Hawsons Chartered Accountants is eligible for appointment as auditor of the group and parent charitable company by virtue of its eligibility for appointment as auditor of a company under section 1212 of the Companies Act 2006.

Use of our report

This report is made solely to the group and parent charitable company's trustees, as a body, in accordance with section 144 of the Charities Act 2011. Our audit work has been undertaken so that we might state to the trustees those matters we are required to state to them in an auditor's report and for no other purpose. To the fullest extent permitted by law, we do not accept or assume responsibility to anyone other than the group and parent charitable company's trustees as a body, for our audit work, for this report, or for the opinions we have formed.

Hawsons Chartered Accountants



Statutory Auditor

Pegasus House

463a Glossop Road

Sheffield

S10 2QD

Date: 11/11/2024

The Consolidated Statement of Financial Activities (Incorporating an Income and Expenditure Account) For the year ended 31 March 2024

Income and endowments from	Note	Unrestricted Funds £	Restricted Funds £	31 March 2024 £	31 March 2023 £
Donations and Legacies	3	2,769,739	252,136	3,021,875	3,421,029
Other trading activities	3	687,344	-	687,344	532,991
Investments	2, 3	300,765	-	300,765	131,531
Total		3,757,848	252,136	4,009,984	4,085,551
Expenditure on					
Raising Funds	2, 4, 5	1,695,345	-	1,695,345	1,453,686
Charitable activities	4	3,385,846	1,927,801	5,313,647	2,018,800
Other	4	27,346	-	27,346	27,342
Total		5,108,537	1,927,801	7,036,338	3,499,828
Net gains/(losses) on investments	11	133,396	-	133,396	(265,161)
Net (expenditure)/income		(1,217,293)	(1,675,665)	(2,892,958)	320,562
Transfers between funds		-	-	-	-
Net movement in funds		(1,217,293)	(1,675,665)	(2,892,958)	320,562
Reconciliation of funds					
Total funds brought forward	17, 18	9,055,201	2,337,444	11,392,645	11,072,083
Total funds carried forward		7,837,908	661,779	8,499,687	11,392,645

All incoming resources and resources expended derive from continuing activities.

The statement of financial activities includes all gains and losses recognised during the year.

The notes on pages 54–83 form part of these accounts.

Statement of Financial Activities (Incorporating an Income and Expenditure Account) For the year ended 31 March 2024

Income and endowments from	Note	Unrestricted Funds £	Restricted Funds £	31 March 2024 £	31 March 2023 £
Donations and Legacies	3	2,769,739	252,136	3,021,875	3,421,029
Other Trading Activities	3	492,836	-	492,836	329,477
Investments	3	376,072	-	376,072	878,770
Total Income		3,638,647	252,136	3,890,783	4,629,276
Expenditure on					
Raising Funds	4, 5	1,535,833	-	1,535,833	1,325,479
Charitable activities	4	3,385,846	1,927,801	5,313,647	2,018,800
Other	4	27,346	-	27,346	27,342
Total resources expended		4,949,025	1,927,801	6,876,826	3,371,621
Net gains/(losses) on investments	11	133,396	-	133,396	(265,161)
Net income		(1,176,982)	(1,675,665)	(2,852,647)	992,494
Transfers between funds		-	-	-	-
Net movement in funds		(1,176,982)	(1,675,665)	(2,852,647)	992,494
Reconciliation of funds					
Total funds brought forward	17, 18	8,969,606	2,337,444	11,307,050	10,314,556
Total funds carried forward		7,792,624	661,779	8,454,403	11,307,050

All incoming resources and resources expended derive from continuing activities.

The statement of financial activities includes all gains and losses recognised during the year.

The notes on pages 54–83 form part of these accounts.

Balance Sheet

	Note	The Group		The Charity	
		31 March 2024 £	31 March 2023 £	31 March 2024 £	31 March 2023 £
Fixed assets					
Intangible assets	9	49,676	62,015	49,676	62,015
Tangible assets	10	447,512	464,329	447,512	464,329
Investments	11	6,262,233	6,104,934	6,265,233	6,107,934
Total fixed assets		6,759,421	6,631,278	6,762,421	6,634,278
Current Assets					
Stocks	2, 13	35,413	48,307	-	-
Debtors	2, 12	834,371	661,616	918,618	796,809
Cash at bank and in hand		2,517,141	6,508,986	2,401,856	6,312,248
Total current assets		3,386,925	7,218,909	3,320,474	7,109,057
Liabilities					
Creditors falling due within one year	2, 14	(1,646,659)	(2,143,933)	(1,628,492)	(2,122,676)
Net current assets		1,740,266	5,074,976	1,691,982	4,986,381
Creditors falling due after one year	2, 15	-	(313,609)	-	(313,609)
Total net assets or liabilities		8,499,687	11,392,645	8,454,403	11,307,050
The funds of the Charity					
Unrestricted income funds	17	7,837,908	9,055,201	7,792,624	8,969,606
Restricted income funds	18	661,779	2,337,444	661,779	2,337,444
Total funds		8,499,687	11,392,645	8,454,403	11,307,050

The notes on pages 54–83 form part of these accounts.

For the year ending 31 March 2024 the company was entitled to exemption from audit under section 477 of the Companies Act 2006 relating to small companies. The members have not required the company to obtain an audit in accordance with section 476 of the Companies Act 2006. The directors acknowledge their responsibility for complying with the requirements of the Act with respect to accounting records and for the preparation of the accounts.

These accounts have been prepared in accordance with the provisions applicable to companies subject to the small companies regime.

As this company is a charity, it is subject to audit under the Charities Act 2011.

Approved and authorised for issue by the Management Committee on 7th October 2024 and signed on its behalf by:



Mr J McMahon, Chairman

Consolidated Cash Flow Statement as at 31 March 2024

	31 March 2024 £	31 March 2024 £	31 March 2023 £	31 March 2023 £
Cash flows from operating activities:				
Net cash provided by (used in) operating activities		(3,853,609)		441,041
Loans received	-		-	
Repayment of bank borrowings	(319,641)		(8,699)	
Interest paid	(13,275)		(13,963)	
Net cash provided by (used in) financing activities		(332,916)		(22,662)
Cash flows from investing activities:				
Payment to acquire tangible fixed assets	(14,261)		(21,293)	
Purchase of investments	(5,398,682)		(4,190,330)	
Sale of investments	5,259,510		1,605,597	
Investment cash movement	115,269		(12,994)	
Interest receivable	95,051		15,681	
Dividends receivable	137,793		99,834	
Net cash provided by (used in) investing activities		194,680		(2,503,505)
Net (decrease) in cash and cash equivalents		(3,991,845)		(2,085,126)
Cash and cash equivalents at 1 April 2022		6,508,986		8,594,112
Cash and cash equivalents at 31 March 2023		2,517,141		6,508,986
Cash and cash equivalents consists of:				
Cash at bank and in hand		2,517,141		6,508,986

Reconciliation of net income to net cash flow from operating activities

	2024 £	2023 £
Net (expenditure)/income for the reporting period (as per the statement of financial activities)	(2,892,958)	320,562
Dividends received	(137,793)	(99,834)
Interest receivable	(95,051)	(15,681)
Interest payable	13,275	13,963
(Gains)/losses on investments	(133,396)	265,161
(Increase)/decrease in stock	12,894	(15,870)
(Increase)/decrease in debtors	(172,755)	(36,975)
Increase/(decrease) in creditors	(491,242)	(29,709)
Loss on disposal	-	-
Depreciation and amortisation charge	43,417	39,424
Net cash flow from operating activities	(3,853,609)	441,041

Analysis of changes net debt

	2024 £	Cash Flows £	2023 £
Cash at bank and in hand	2,517,141	(3,991,845)	6,508,986
Borrowings			
Bank borrowings due within one year	-	6,032	(6,032)
Bank borrowings due after one year	-	313,609	(313,609)
Total net debt	2,517,141	(3,672,204)	6,189,345

Notes to the financial statements

For the year ended 31 March 2024

1. Accounting policies

Basis of Preparation

The financial statements have been prepared in accordance with Accounting and Reporting by Charities: Statement of Recommended Practice applicable to charities preparing their accounts in accordance with the Financial Reporting Standard applicable in the UK and Republic of Ireland (FRS 102) as updated through Update Bulletin 1 published on 2 February 2016, the Financial Reporting Standard applicable in the United Kingdom and Republic of Ireland (FRS 102), the Charities Act 2011, the Companies Act 2006 and UK Generally Accepted Practice.

The charity constitutes a public benefit entity as defined by FRS 102.

The financial statements are prepared on a going concern basis under the historical cost convention, modified to include listed investments at market value. The financial statements are prepared in sterling which is the functional currency of the charity.

The significant accounting policies applied in the preparation of these financial statements are set out below. These policies have been consistently applied to all years presented unless otherwise stated.

Basis of Consolidation

The consolidated statement of financial activities and balance sheet include the financial statements of the charity and its subsidiary undertaking made up to 31 March 2024. The results of the subsidiary are consolidated on a line by line basis.

Statutory Information

The Children's Hospital Charity Ltd is a charity (No. 505002) and a company limited by guarantee (No. 01224751) incorporated and domiciled in England and Wales. The registered office is at The Children's Hospital Charity, Western Bank, Sheffield, S10 2TH.

Company Status

The charity is a private company limited by guarantee. In the event of being wound up, the liability in respect of the guarantee is limited to £1 per member of the charity.

Funds

Unrestricted funds are available for use at the discretion of the Trustees in furtherance of the general objectives of the charity and which have not been designated for other purposes. Designated funds comprise unrestricted funds that have been set aside by the trustees for particular purposes. The aim and use of each designated fund is set out in the notes to the financial statements.

Restricted funds are funds which are to be used in accordance with specific restrictions imposed by donors or which have been raised by the charity for particular purposes. The cost of raising and administering such funds are charged against the specific fund. The aim and use of each restricted fund is set out in the notes to the financial statements.

Accounting policies continued.

Government Grants

Grants that relate to the financing of projects to expand the operations of the business are amortised over the expected useful economic lives of the assets or projects concerned. Grants relating to the revenue expenditure are credited to income where receivable.

Incoming resources

Incoming resources are included in the Statement of Financial Activities when the Charity has entitlement to the funds, any performance conditions have been met, the amount can be measured reliably and it is probable that income will be received.

Receipt of a legacy is recognised when it is probable that it will be received. Receipt is normally probable when:

1. there has been a grant of probate;
2. the executors have established that there are sufficient assets in the estate, after settling any liabilities, to pay the legacy; and
3. any conditions attached to the legacy are either within the control of the charity or have been met.

Going Concern

The Financial statements have been prepared on a going concern basis as the Trustees believe that, while the charity faces a significant challenge to its operating environment, no material uncertainties exist. The charity Trustees have considered the level of funds held, and the expected level of income and expenditure for the 12 months from authorisation of these financial statements to enable the charity to be able to continue as a going concern.

Donated Goods, Facilities and Services

Donated facilities and donated professional services are recognised in income at their fair value when their economic benefit is probable, it can be measured reliably, and the Charity has control over the item. Fair value is determined on the basis of the value of the gift to the Charity. For example, the amount the Charity would be willing to pay in the open market for such facilities and services. A corresponding amount is recognised in expenditure.

Sheffield Children's NHS Foundation Trust provides some office accommodation, facilities and administration support to the Charity free of charge.

Use of Volunteers

No amount is included in the financial statements for volunteer time in line with the SORP (FRS 102). Further detail is given in the Trustees' Annual Report.

A notional amount of time is donated by volunteers to assist with fundraising and administrative support. Periodically, goods (such as toys and Easter eggs) are donated to the Charity and are impractical to value.

Fundraising and Trading Activities

Income from trading activities includes income earned from fundraising events and trading activities to raise funds for the Charity. Income is received in exchange for supplying goods and services in order to raise funds and is recognised when entitlement has occurred.

Accounting policies continued.

Investment Income

Investment income is earned through holding assets for investment purposes such as shares and gilts. It includes dividends and interest. Where it is not practicable to identify investment management costs incurred within a scheme with reasonable accuracy the investment income is reported net of these costs. It is included when the amount can be measured reliably. Interest income is recognised using the effective interest method and dividend income is recognised as the Charity's right to receive payment is established.

The Trustees have considered the most appropriate policy for the investment of funds and decided to invest in a low-risk portfolio of stocks, shares and gilts. Investments are stated at market value. The Statement of Financial Activities includes the net gains and losses arising on revaluations and disposals throughout the year.

Investments are recognised initially at fair value which is normally the transaction price excluding transaction costs. Subsequently, they are measured at fair value with changes recognised in 'net gains / (losses) on investments' in the SoFA if the shares are publicly traded or their fair value can otherwise be measured reliably. Other Investments/ Investments in subsidiaries are measured at cost less impairment.

Resources Expended

All expenditure is accounted for on an accruals' basis, except for grants, which are accounted for in the period in which the Charity makes a formal commitment to give grant aid.

Resources expended are allocated to the particular activity where the cost relates directly to that activity. The cost of overall direction and overhead costs of the central function are borne by the unrestricted fund.

Tangible/Intangible fixed assets and depreciation

Tangible/intangible fixed assets are stated at cost less depreciation. Intangible assets include software and trademarks and are only recognised when it is probable that future economic benefit will flow to the Charity and where the cost of the asset can be measured reliably. Depreciation is provided at rates calculated to write off the cost less estimated residual value of each asset over its expected useful life, as follows:

Buildings - 25 years straight line

Office equipment – various rates between 20% and 33.3% straight line.

Intangible assets - 10 years straight line.

Assets are depreciated / amortised from the date at which they come into use by the Charity.

Designated funds

The Management Committee have designated certain funds for specific purposes. The movement on these funds is detailed in note 17.

Stocks

Stocks are valued at the lower of cost and net realisable value on a first in, first out basis.

Accounting policies continued.

Irrecoverable VAT

Costs are recorded gross of VAT to the extent that VAT is not recoverable by the Charity.

Pension costs

The Charity makes contributions to a defined contribution pension scheme. Contributions payable are charged to The Statement of Financial Activities in the period to which they relate.

Debtors

Debtors are measured on the basis of amount due less provision for doubtful debt. Debtors include prepayments and accrued income.

Creditors

Creditors include amounts invoiced to the organisation but not yet paid, along with accrued expenditure and unspent research grants.

Liabilities are recognised when there is a legal or constructive obligation committing the Charity to that expenditure, it is probable that settlement will be required, and the amount of obligation can be measured reliably.

Financial Instruments

Financial assets and financial liabilities which arise from contracts for the purchase or sale of non-financial items are recognised when performance occurs.

Judgements and Key Sources of Estimation Uncertainty

Estimates and judgements are continually evaluated and are based on historical experience and other factors, including expectations of future events that are believed to be reasonable under other circumstances.

Critical accounting estimates and assumptions: the Charity makes estimates and assumptions concerning the future. The resulting accounting estimates and assumptions will, by definition, seldom equal the related actual results.

2. Results of trading subsidiary

The Charity has one wholly owned trading subsidiary, Theo Bear Trading Company Limited, a company incorporated in the UK. Its results are summarised below:

	2024 £	2023 £
Turnover	191,659	203,514
Cost of sales	(156,495)	(125,838)
Gross profit	35,164	77,676
Administration expenses	(3,017)	(2,369)
Other operating income	-	-
Operating Profit/(loss)	32,147	75,307
Interest receivable	2,849	-
Retained Profit/(loss) for the year	34,996	75,307
Retained profits brought forward	85,595	757,527
Gift Aid distribution to Charity	(75,307)	(747,239)
Retained profit/(loss) carried forward	45,284	85,595
Net assets	45,284	85,595

	2024 £	2023 £
Current assets		
Stocks	35,413	48,307
Debtors	12,307	22,179
Cash in hand	115,285	196,738
Total	163,005	267,224
Creditors		
Amounts falling due within one year	(114,721)	(178,629)
Net current assets	48,284	88,595
Amounts falling due after more than one year	-	-
Total net assets or liabilities	48,284	88,595
Capital and reserves		
Called up share capital	3,000	3,000
Retained earnings	45,284	85,595
Shareholder's funds	48,284	88,595

3. Income

Donations and legacies	Unrestricted £	Restricted £	2024 £	2023 £
Donations and gifts	2,138,687	252,136	2,390,823	2,839,480
Legacies	631,052	-	631,052	581,549
Total Donations and legacies	2,769,739	252,136	3,021,875	3,421,029
Other trading activities				
Trading income	194,508	-	194,508	203,514
Fundraising and event income	492,836	-	492,836	329,477
Total Other trading activities	687,344	-	687,344	532,991
Investment income				
Dividends	137,793	-	137,793	99,834
Interest	95,051	-	95,051	15,681
Gain on disposal	(179,142)	-	(179,142)	2,397
Current Account Interest	24,788	-	24,788	13,619
Treasury Call Account Interest	222,275	-	222,275	-
Gift Aid from Theo Bear Trading Company Limited (removed on consolidation)	75,307	-	75,307	747,239
Total Investment income	376,072	-	376,072	878,770

4. Expenditure

Expenditure on raising funds	Unrestricted £	Restricted £	2024 £	2023 £
Costs of raising donations	1,407,398	-	1,407,398	1,248,565
Trading company costs	159,512	-	159,512	128,207
Event costs	128,435	-	128,435	76,915
Investment related expenditure	27,346	-	27,346	27,342
Total Expenditure on raising funds	1,722,691	-	1,722,691	1,481,029

Charitable activities	Grant Funding £	Support £	2024 £	2023 £
Designated Fund Grants	3,139,124	-	3,139,124	307,726
Restricted Fund Grants	1,927,801	-	1,927,801	1,578,143
Research: allocations	216,565	-	216,565	137,078
Research: written back	(15,365)	-	(15,365)	(42,429)
Support Costs	-	45,522	45,522	38,282
Total Charitable activities	5,268,125	45,522	5,313,647	2,018,800

For a number of years the Charity has been fundraising to construct a helipad at Sheffield Children's, building up enough funds for this large capital project. The works to construct the new helipad took place throughout 2023/24, and so funding was distributed to the Trust to fund this project at various points throughout this financial year. This means that expenditure on Charitable Activities is much higher than in previous years.

5. Resources expended

	2024 £	2023 £
Allocation of support costs		
Governance	8,717	5,818
Information Technology	9,179	6,646
Human Resources	3,955	2,724
Office Costs	16,087	16,578
Other	7,584	6,516
Total Support costs	45,522	38,282

The basis of allocation is staff time spent.

6. Remuneration of the Management Committee

None of the Management Committee members received any remuneration or were reimbursed any out of pocket expenses in the year (2022/23: £0).

	2024 £	2023 £
Governance costs		
Auditor's remuneration	15,313	12,000
Other	26,197	24,361
Total Governance costs	41,510	36,361

7. Staff costs

	2024 £	2023 £
Basic salary	947,485	735,591
Social Security costs	91,771	74,684
Pension costs	83,749	61,889
Total Staff costs	1,123,005	872,164

The average number of employees, calculated on a full-time equivalent basis, analysed by function:

	2024	2023
Cost of raising voluntary income	24	20
Charitable activities	6	4
Total	30	24

The number of employees' whose employee benefits (excluding employers pension costs) exceeded £60,000 was:

	2024	2023
In the band £60,001 - £70,000	-	-
In the band £70,001 - £80,000	1	1
Total	1	1

Total remuneration of key management personnel in the year was £400,302 (2022/23:£318,707).

Key management personnel comprises the Trustees and seven (2022/23: seven) members of the management team, which at the year end comprises the staff members listed below:

Chief Executive Officer

Head of Operations, Governance and Trading (new role from consolidation of two former roles 2022/23)

Head of Marketing

Head of Community and Events Fundraising (new role 2022/23)

Head of Strategic Partnerships (new role 2022/23)

Head of Art+ (new role 2022/23)

Head of Philanthropy, Trusts and Foundations (new role 2022/23)

8. Pensions

For all staff members the Charity operates a defined contribution pension plan.

The amount recognised as an expense in year was £83,749 (2022/23: £61,889).

9. Intangible assets

Cost	£
At 1 April 2023	123,374
Additions	-
Disposals	-
At 31 March 2024	123,374
Amortisation	
At 1 April 2023	61,359
Amortisation in year	12,339
At 31 March 2024	73,698
Net book value at 31 March 2024	49,676
Net book value at 31 March 2023	62,015

Note: Amortisation in year expensed to the Cost of Raising Donations (£9,748) and Support Costs (£2,591).

10. Tangible fixed assets

	Charity and Group Office Equipment £	Charity and Group Buildings £	Total £
Cost			
At 1 April 2023	90,598	495,343	585,941
Additions	14,261	-	14,261
At 31 March 2024	104,859	495,343	600,202
Depreciation			
At 1 April 2023	57,217	64,395	121,612
Depreciation in year	11,264	19,814	31,078
At 31 March 2024	68,481	84,209	152,690
Net book value at 31 March 2024	36,378	411,134	447,512
Net book value at 31 March 2023	33,381	430,948	464,329

Note: Total Depreciation in year expensed to the Cost of Raising Donations (£24,552) and Support Costs (£6,526).

11. Fixed asset investment

	Listed Investments £	Other Investments £	Total £
Cost or valuation			
At 1 April 2023	6,104,934	3,000	6,107,934
Additions	5,398,682	-	5,398,682
Disposals	(5,259,510)	-	(5,259,510)
Movement in cash held	(115,296)	-	(115,296)
Realised gain/(loss)	(181,859)	-	(181,859)
Unrealised gain/(loss)	315,256	-	315,256
At 31 March 2024	6,262,233	3,000	6,265,233
Carrying amount at 31 March 2024	6,262,233	3,000	6,265,233

Other investments: a 100% holding in the ordinary share capital of Theo Bear Trading Company Ltd (co. no. 02946773) registered office The Children's Hospital Charity, Western Bank, Sheffield, S10 2TH, are quoted at cost. The results of this company are included in the consolidated financial statements.

Investments at fair value (determined by reference to the quoted market value at the balance sheet date) comprises:	2024 £	2023 £
The Charity		
Shares in subsidiary undertaking	3,000	3,000
Equities/Bond Funds	-	2,148,157
Securities	5,928,239	3,557,503
Cash with investment portfolio	333,994	399,274
Total	6,265,233	6,107,934

12. Debtors

	The Group		The Charity	
	31 March 2024 £	31 March 2023 £	31 March 2024 £	31 March 2023 £
Amounts due within the year				
Trade Debtors	12,307	22,179	-	-
Prepayments and accrued income - Amounts due <1 year	822,064	639,437	822,064	639,437
Amounts owed by group undertakings	-	-	96,554	157,372
Total Debtors	834,371	661,616	918,618	796,809

13. Stock

	The Group		The Charity	
	31 March 2024 £	31 March 2023 £	31 March 2024 £	31 March 2023 £
Stock of goods for resale	35,413	48,307	-	-
Total Stock	35,413	48,307	-	-

14. Creditors: amounts falling due in less than one year

	The Group		The Charity	
	31 March 2024 £	31 March 2023 £	31 March 2024 £	31 March 2023 £
Trade Creditor	167,999	134,137	167,681	133,322
Creditors, accruals and deferred income	1,100,942	1,622,082	1,099,059	1,621,082
Tax and Social Security	34,890	37,621	18,924	18,179
Amounts committed to projects	342,828	344,061	342,828	344,061
Charity bank loan	-	6,032	-	6,032
Amounts owed to group undertakings	-	-	-	-
Total Creditors: amounts falling due in less than one year	1,646,659	2,143,933	1,628,492	2,122,676

15. Creditors: amounts falling due after more than one year

	The Group		The Charity	
	31 March 2024 £	31 March 2023 £	31 March 2024 £	31 March 2023 £
Creditors, accruals and deferred income	-	-	-	-
Charity bank loan	-	317,769	-	317,769
Total Creditors: amounts falling due after more than one year	-	317,769	-	317,769

16. Capital

The company is a company limited by guarantee not having a share capital. Accordingly, the company has no shareholders and no reconciliation of movements in shareholders' funds has been presented.

17. Unrestricted funds

	Balance				Balance
	1st April 2023	Incoming Resources	Expenditure and Grants Committed	Transfers	31st March 2024
Designated:	£	£	£	£	£
A&E	416,510	6,662	-	-	423,171
AAU	879	-	-	-	879
Action Lab	9,454	35,922	(24,619)	-	20,757
Allergy Clinic	-	491	-	-	491
Becton General	13,436	12,943	(1,607)	-	24,772
Bereavement	38,558	5,371	(461)	-	43,468
Bone Disease OI	24,072	308	-	-	24,380
Burns Unit	32,291	11,961	(9,588)	17	34,681
Cardiac Care	25	-	-	-	25
Amber Lodge -CAMHS	2,124	-	-	-	2,124
Emerald Lodge -CAMHS	3,586	-	-	-	3,586

Unrestricted funds continued.

	Balance				Balance
	1st April 2023	Incoming Resources	Expenditure and Grants Committed	Transfers	31st March 2024
Designated:	£	£	£	£	£
Ruby Lodge -CAMHS	2,341	-	(435)	-	1,906
Sapphire Lodge -CAMHS	6,017	-	-	-	6,017
Classroom and Becton School	4,589	-	(3,715)	-	874
Community CAHMS	32,222	5,993	(12,988)	-	25,227
Community Physio	2,128	-	-	-	2,128
Covid-19	90,030	1,044	(53,168)	-	37,906
CWAHMSParentLiaison	1,976	-	-	-	1,976
Cystic Fibrosis Centre	29,135	4,175	(1,698)	-	31,612
Dermatology	6,577	-	(5,787)	-	790
Diabetes	41,572	1,539	(5,470)	-	37,641
ED Patient Wellbeing	-	50,316	(25,027)	-	25,289
Embrace	90,151	17,027	(26,267)	-	80,911
Endocrine clinic	10,536	-	(262)	-	10,274
ENT	29,210	296	-	-	29,506
Eye Department	13,318	275	(158)	-	13,435
Food Therapy	8,253	-	-	-	8,253

Cont.

Unrestricted funds continued.

	Balance	Incoming Resources	Expenditure and Grants Committed	Transfers	Balance
	1st April 2023				31st March 2024
Designated:	£	£	£	£	£
Gait Lab	836	-	-	-	836
Gastroenterology	4,081	12,291	(3,222)	-	13,150
Genetics	6,245	101	-	-	6,346
Haematology & Oncology	103,573	62,470	(2,900)	-	163,143
Hearing Services	2,625	-	-	-	2,625
Late Effects	34,339	348	(1,604)	-	33,083
Leukaemia & Oncology Research	58,025	1,428	-	-	59,453
Mental Health and Wellbeing Patients and Staff	-	122,903	-	-	122,903
National Centre for Child Healthcare Technology NCCHT	-	77,915	-	-	77,915
Neonatal Surgical Equipment - MCC17/18	12,399	-	(4,800)	-	7,599
Neo-Natal Surgical Unit	23,359	9,268	(1,237)	-	31,390
Neuro Mr Zaki	7,578	-	-	-	7,578
Neurorehabilitation	2,269	-	-	-	2,269
OI Therapy	2,813	-	-	-	2,813
OPAT	2,165	-	(722)	-	1,443

Cont.

Unrestricted funds continued.

	Balance	Incoming Resources	Expenditure and Grants Committed	Transfers	Balance
	1st April 2023				31st March 2024
Designated:	£	£	£	£	£
Orthopaedics Procedures	17,024	1,040	-	-	18,064
Outpatients	10,411	-	(500)	-	9,911
Pain Management	1,052	-	-	-	1,052
Palliative Care Team	-	18,943	-	-	18,943
PCCU (was ICU & HDU)	63,310	7,583	(6,241)	-	64,652
Preoperative Care Team	-	4,412	(440)	-	3,972
Radiology	3,004	457	-	-	3,461
Renal	5,023	359	-	-	5,382
Rheumatology	23,630	2,019	(1,231)	-	24,418
RMTL	1,501	116	-	-	1,617
Ryegate Bike	392	69	-	-	461
Ryegate Centre	37,489	12,576	(10,056)	-	40,009
Ryegate Epilepsy	5,298	186	-	-	5,484
Ryegate Helena's Specialist Nurses	7,103	69	-	-	7,172
Ryegate House	3,951	3,617	(325)	-	7,243
Ryegate Therapy Block	8,785	336	(2,092)	-	7,029

Cont.

Unrestricted funds continued.

	Balance				Balance
	1st April 2023	Incoming Resources	Expenditure and Grants Committed	Transfers	31st March 2024
Designated:	£	£	£	£	£
Safeguarding Support Unit	12,083	1,403	(1,573)	-	11,913
Sophie's Fund	1,167	-	(1,150)	(17)	-
Sleep	80,715	10,612	(20,898)	-	70,429
Spinal Unit	12,292	376	(6,792)	-	5,876
Theatre Admissions Unit	538	72	-	-	610
Theatres	547	12,057	(103)	-	12,501
Transition Team & Youth Forum	712	-	-	-	712
Urology	698	124	(260)	-	562
Ward 1 (formerly S1)	20,077	1,393	(6,570)	-	14,900
Ward 2 (formerly S3)	27,360	-	-	-	27,360
Ward 3 (formerly M2)	2,892	1,043	(212)	-	3,723
Ward 4 (formerly M1)	520	-	-	-	520
Ward 5 (formerly S2 - Neurosciences)	187,398	38,354	(4,024)	-	221,728
Sub-total	1,704,269	558,262	(248,202)	-	2,014,329

Cont.

Unrestricted funds continued.

	Balance				Balance
	1st April 2023	Incoming Resources	Expenditure and Grants Committed	Transfers	31st March 2024
Designated:	£	£	£	£	£
Active Challenge	141,713	13,893	-	-	155,606
Active Challenge - Therapy Rooms Artfelt Project	20,000	-	-	-	20,000
Art+	-	19,971	(145,852)	125,881	-
Art+ Workshops (Queen Bees)	-	16,385	(198)	-	16,187
Art+ Workshops Christmas (tree collection)	-	-	-	10,000	10,000
Artfelt Rebrand	10,000	-	(9,996)	(4)	-
Artfelt Ward 4 Project	4,172	-	-	-	4,172
Building a Better Future (was Make it Better)	4,514,018	230,890	(2,564,472)	3,543	2,183,979
Christmas	-	-	(2,818)	2,818	-
EOS Scanner	10,907	-	-	-	10,907
Helipad	150,376	1,517	(151,893)	-	-
Patient Entertainment Existing Hospital	10,450	-	(3,860)	-	6,590
Play Specialists	147	1,078	(4,812)	3,587	-

Cont.

Unrestricted funds continued.

	Balance				Balance
	1st April 2023	Incoming Resources	Expenditure and Grants Committed	Transfers	31st March 2024
Designated:	£	£	£	£	£
New Build - Artfelt (Museum cabinets)	598	-	-	(598)	-
New Build - Artfelt (Phlebotomy Rooms)	2,945	-	-	(2,945)	-
X-Ray Dept. (Artfelt)	6,465	-	-	-	6,465
Research	-	196	(201,200)	201,004	-
Special Projects Grants	210,274	30,835	-	-	241,109
Total designated funds	6,786,334	873,027	(3,333,303)	343,286	4,669,344
Undesignated funds	2,183,272	2,899,016	1,615,722	(343,286)	3,123,280
Total unrestricted funds - Charity	8,969,606	3,772,043	4,949,025	-	7,792,624
Profit retained in subsidiary	85,595				45,284
Total unrestricted funds - Group	9,055,201				7,837,908

Name of designated fund	Description of designated fund
Building a Better Future (was Make it Better)	The Children's Hospital Charity's mission is to transform Sheffield Children's NHS Foundation Trust with the Build a Better Future Appeal, transforming the Cancer Ward, Emergency Department, Child Assessment Unit and build a new Helipad.
Other designated funds	Any charitable purpose relating to the service or department specified in the name of the fund.

18. Restricted funds

	Balance				Balance
	31st March 2023	Incoming Resources	Expenditure & Grants Committed	Transfers	31st March 2024
	£	£	£	£	£
Artfelt Becton Courtyard	104,502	4,229	(15,650)	-	93,081
- Art+ Workshops Art+ Anywhere	-	2,125	-	-	2,125
- Art+ Workshops Becton Grow	-	5,078	-	-	5,078
Artfelt Workshops Co-op Community Fund	109	-	-	-	109
Artfelt Workshops National Foundation for Youth Music	7,501	286	(1,332)	-	6,455
Artfelt Workshops The Freshgate Trust Fund	670	-	(670)	-	-
Artfelt Workshops National Lottery Community Fund	4,542	-	(4,542)	-	-
Artfelt Workshops Sarah Nulty Power of Music Foundation	-	2,000	(2,000)	-	-
Artfelt Workshops St James' Place Foundation	2,500	-	(1,040)	-	1,460
Artfelt Workshops The D'Oyly Carte Charitable Trust	3,157	-	(3,157)	-	-
Artfelt Workshops Wallace & Gromit's Children's Foundation	1,930	-	-	-	1,930
- B-floor Garden	-	100,417	(420)	-	99,997
Bone Research	11,864	542	-	-	12,406

Cont.

Restricted funds continued.

	Balance				Balance
	31st March 2023	Incoming Resources	Expenditure & Grants Committed	Transfers	31st March 2024
	£	£	£	£	£
Chaplaincy	1,788	-	-	-	1,788
Child's Play Charity Gaming Equipment	-	3,832	(3,832)	-	-
Children's Brain Disorders Research	3,056	-	-	-	3,056
Community Exercise Therapist	19,548	541	(8,853)	-	11,236
Cystic Fibrosis (CFCF)	41,809	1,911	-	-	43,720
Diabetes Type 1	8,467	387	-	-	8,854
Helipad	1,491,727	37,578	(1,529,305)	-	-
Helipad BNA	50,000	928	(50,928)	-	-
Helipad Persimmons	100,000	1,856	(101,856)	-	-
Helipad Westfield Health	94,500	1,754	(96,254)	-	-
Leukaemia and Oncology Restricted	92,352	4,221	-	-	96,573
Leukaemia Research	26,878	998	(8,701)	-	19,175
Medical Equipment	92,057	62,494	(59,194)	-	95,357
Memorial Garden	-	50	-	-	50
National Centre for Child Health Technology NCCHT	21,938	1,851	-	-	23,789

Cont.

Restricted funds continued.

	Balance				Balance
	31st March 2023	Incoming Resources	Expenditure & Grants Committed	Transfers	31st March 2024
	£	£	£	£	£
Build it Better	593	-	-	-	593
Plastic Surgery	521	-	-	-	521
PLRS	52,781	5,231	(5,757)	-	52,255
Research The Tom Bowdidge Youth Cancer Foundation	-	7,279	-	-	7,279
Ryegate Centre Legacy	10,040	459	-	-	10,499
Sleep Medical Equipment	27,784	248	(26,310)	-	1,722
Speech Therapy	495	3,517	-	-	4,012
Staycation Packs	6,976	319	-	-	7,295
Toms Fund	3,838	-	-	-	3,838
Trust Projects The True Colours Trust	2,039	-	(491)	-	1,548
Trust Projects Yorkshire Childrens Hospital Fund (Sleep)	19,812	906	-	-	20,718
Uveitis Clinic	7,500	204	(3,548)	-	4,156
Ward 6 (Build it Better) restricted donations	1,878	250	-	-	2,128
Ward 6 Child's Play	882	-	-	-	882

Cont.

Restricted funds continued.

	Balance				Balance
	31st March 2023	Incoming Resources	Expenditure & Grants Committed	Transfers	31st March 2024
	£	£	£	£	£
Ward 6 IT & Electronic Equipment	3,300	-	-	-	3,300
Ward 6 Play & Distraction	10,107	449	-	-	10,556
Ward 6 Staff & Patient Support	8,003	196	(3,961)	-	4,238
	2,337,444	252,136	(1,927,801)	-	661,779

Name of restricted fund	Description of restricted fund
Artfelt Becton Courtyard	To fund Artfelt refurbishment of Becton Courtyard.
Artfelt Workshops Co-op Community Fund	To fund a series of bedside Theatre sketches & interactive games at the Becton centre.
Artfelt Workshops: National Foundation for Youth Music	To fund Artfelt Sounds, a programme of music performances and tutorials for patients across the Trust.
Artfelt Workshops: The Freshgate Trust Fund	To fund a series of circus workshops for patients.
Artfelt Workshops National Lottery Community Fund	To fund the Artfelt Anywhere Project providing virtual workshops at patients bedsides.
Artfelt Workshops St James' Place Foundation	To fund Artfelt Anywhere programme.
Artfelt Workshops The D'Oyly Carte Charitable	To fund art & music workshops at the Becton Centre.

Cont.

Restricted funds continued.

Name of restricted fund	Description of restricted fund
Artfelt Workshops:Wallace & Gromit's Children's Foundation	To fund DJing sessions for patients in conjunction with the Physiotherapy Team which explore movement and recovery.
Bone Research	Any charitable purpose relating to Bone Research.
Building a Better Future (Ward 6 restricted)	Funding towards the Cancer & Leukaemia Inpatient Ward development project.
Chaplaincy	Any charitable purpose relating to the Chaplaincy.
Children's Brain Disorders Research	To fund research into children's brain disorders, including salaries & equipment.
Community Exercise Therapist	To fund an exercise and physical activity therapist in the community team.
Cystic Fibrosis (CFCF)	Any charitable purpose relating to Cystic Fibrosis. Donation from Caring for Cystic Fibrosis.
Diabetes Type 1	Any charitable purpose relating to Diabetes Type 1.
Do it For You	A family centred activity day for children and young people who have received treatment for cancer or a bone marrow transplant at Sheffield Children's Hospital. This fund was set up specially for a ringfenced grant from Macmillan.
Helipad	To fund a new helipad as part of the Build It Better appeal.
Leukaemia Research	Any charitable purpose relating to Leukaemia Research.
Leukaemia and Oncology Restricted	For the benefit of patients undergoing bone marrow treatment.
Plastic Surgery	Any charitable purpose relating to Plastic Surgery.
PLRS	Any charitable purpose relating to the Paediatric Limb Reconstruction Service.
Ryegate Centre Legacy	Any charitable purpose relating to Ryegate Children's Centre,an assessment and treatment centre for children with a wide range of neurological and neurodisability needs.
Sleep Medical Equipment	To fund medical equipment for the Sleep Department

Cont.

Restricted funds continued.

Name of restricted fund	Description of restricted fund
Speech Therapy	A legacy donation for use by the Speech Therapy team.
Staycation Packs	Activity packs for patients on the wards.
Toms Fund	This fund was set up specifically for donations in memory of Tom Blower and is restricted for use by the Intensive Care Unit.
The True Colours Trust	Grant to make improvements to the Parent Rooms used by Ward 1 & 2 and Ward 5.
Yorkshire Childrens Hospital Fund (Sleep)	Sleep monitoring equipment for the Sleep Service Department.
Uveitis Clinic	To improve the patient experience of children with Uveitis attending the Uveitis clinic at Sheffield Children's Hospital.
Ward 6 (Build it Better)	Funding towards the Cancer & Leukaemia Inpatient Ward development project provided by various trusts.
Ward 6 Child's Play	To fund games consoles, tablets & virtual reality or related technology for use on Ward 6.
Ward 6 IT & Electronic Equipment	To fund IT & electronic equipment for patients on Ward 6.
Ward 6 Play & Distraction	To fund play & distraction items for patients on Ward 6.
Ward 6 Staff & Patient Support	To support staff development, patient experience & annual Ward 6 Remembering Day.
Ward 6 Yorkshire Building Society Charitable Foundation	To fund toys & play equipment for use on the Cancer & Leukaemia Ward.

19. Fund descriptions

Unrestricted funds

These funds are amounts which are not yet designated for a particular project by the Management Committee but also where no restriction as to how the funds can be expensed has been placed on the funds by the donor.

Designated funds

The numerous designated funds are projects or fundraising activities being run by the charity. These funds are set by the Management Committee as to what projects will be run and generally the funds are eligible to be transferred from one to another under the terms of the donations.

Restricted funds

These tend to be a result of one off large donations, regularly from legacies, where the funds are specified to only be spent on a particular type of work. The restrictions do not, usually, restrict the expenditure any further but the Management Committee keep a close watch on how these funds are spent and also what opportunities arise to spend the funds on prospective projects.

20. Analysis of group net assets between funds

	2024 Unrestricted £	2024 Restricted £	2024 Total £
Fixed assets	6,759,421	-	6,759,421
Cash and current investments	1,855,362	661,779	2,517,141
Current assets	869,784	-	869,784
Current liabilities	(1,646,659)	-	(1,646,659)
Total	7,837,908	661,779	8,499,687

	2023 Unrestricted £	2023 Restricted £	2023 Total £
Fixed assets	6,631,278	-	6,631,278
Cash and current investments	2,583,145	3,925,841	6,508,986
Current assets	709,923	-	709,923
Current liabilities	(555,536)	(1,588,397)	(2,143,933)
Non current liabilities	(313,609)	-	(313,609)
Total	9,055,201	2,337,444	11,392,645

21. Grants

The following grants have been made during the year	2024 £	2023 £
Unrestricted funds:		
Medical research projects within the Sheffield Children's NHS FT	201,200	84,395
Charity projects for which there are designated funds	3,139,124	307,726
Support costs allocated	45,522	38,282
Total Grants from unrestricted funds	3,385,846	430,403
Restricted funds:		
Medical research projects within the Sheffield Children's NHS FT	-	10,254
Grants made projects for which there are restricted funds (note 18)	1,927,801	1,578,143
Total Grants from restricted funds	1,927,801	1,588,397
Total Grants	5,313,647	2,018,800

All grants made in year to Sheffield Children's NHS Foundation Trust.

22. Related Parties

During the year, payments of £23,976 (2023: £Nil) were made towards medical research projects with the Sheffield Children's NHS FT where C.Offiah is the lead investigator.

23. Contingent assets

The charity recognises legacy income when it has received notification of the legacy and has sufficient certainty regarding the amount of the receipt. Where there is uncertainty over the amount of the legacy that will be received, income is not recognised until the estate has been finalised by its executors. The charity prudently estimates that income from such legacies will be in the region of £315,000 (2022/23: £255,000) and will recognise this income in future years.

Thank You