

Farms for City Children Limited

(A charitable company limited by guarantee)

Annual Report and Financial Statements

Year ending 31 August 2025



**FARMS FOR
CITY CHILDREN**

Registered Charity Number: 325120

Registered Company Number: 01177239 (England and Wales)

Farms for City Children Limited
Report and Financial Statements for the year ended 31 August 2025

Contents Page

Reference and Administrative Details	1
Report of the Trustees	2-17
Auditors Report	18-22
Statement of Financial Activities	23
Balance Sheet	24
Cash flow	25
Notes to the accounts	26-45

Farms for City Children Limited

Reference and administrative details

Charity number: 325120
Company number: 01177239
Registered Office: Unit 2 Huxham Barns, Huxham, Exeter, EX5 4EJ

Directors and Trustees

The Directors of the Charitable Company (Charity) are its Trustees for the purpose of charity law. The Trustees and officers serving during the year and since the year end were as follows:

Chair	Rachel Goult
Trustees	Sir Michael Morpurgo OBE Lady Morpurgo MBE Richard Ash Andrew Bailey (resigned 29 July 2025) Jonathan Bishop OBE Jayne Copley Rachel Goult Rosanna Machado Rose O'Hagan Mary Trussell Simon Whatler Alexandra Hollingshead (appointed 28 October 2024)
Secretary	Lady Morpurgo MBE
Chief Executive	Corinna Csaky
Auditors	Westcotts (SW) LLP 47 Boutport Street Barnstaple Devon EX31 1SQ
Bankers	NatWest Bank plc 59 High Street Exeter Devon EX4 3DL

Farms for City Children Limited

Report of the Trustees for the year ending 31 August 2025

The Trustees are pleased to present their Annual Trustees' Report together with the consolidated Financial Statements of the Charity and its subsidiary for the year ending 31 August 2025. The Report and Financial Statements are prepared to meet the Directors' Report and Accounts requirements for Companies Act purposes.

The Financial Statements comply with the Charities Act 2011, the Companies Act 2006, the Memorandum and Articles of Association, and Accounting and Reporting by Charities: Statement of Recommended Practice applicable to charities preparing their accounts in accordance with the Financial Reporting Standard applicable in the UK and Republic of Ireland (FRS 102) (effective 1 January 2019).

Chair's Report

We are extremely proud of what we have achieved during the course of 2024-25. Despite ever-increasing pressures on school and household budgets, a record number of children and young people have been able to experience a transformative week at one of our farms. We have extended our reach to new schools and community groups, engaging young farmers aged 8 to 19 years of age from across England and Wales.

Aside from our beneficiaries, we were delighted to welcome hundreds of people from local communities to our farms through various events, and to host a very special visit from our patron, HRH the Princess Royal, at Lower Treginnis, our farm in Pembrokeshire.

Our commitment to nature-friendly farming and sustainable operating practices has seen us develop new habitats, increase biodiversity and make practical progress in reducing our consumption and impact.

This year we bade a fond farewell to our former Chief Executive Donna Edmonds and will begin 2025-26 welcoming her successor, Corinna Csaky, who joined us in September 2025. We are excited to see how Corinna's leadership will guide us into a new era of expansion and outreach, enabling even more children and young people to benefit from the life-changing experience of being farmers for a week.

Finally, none of the incredible outcomes you'll find in this report would be possible without the passion, commitment and support of our staff, volunteers, trustees and funders. We would like to extend a heartfelt thank you to you all.



Rachel Goult,
Chair of the Board of Trustees

Farms for City Children Limited

Report of the Trustees for the year ending 31 August 2025

Our purposes and activities

Farms for City Children exists to remove the barriers that prevent children and young people from having meaningful access to the natural world. Through our food, farming, and nature-connected wellbeing offer, we strive to empower the next generation to experience the countryside's physical and mental health benefits, and to see themselves as future custodians of the land.

During an immersive five-day residential stay on one of our stunning heritage farms in Devon, Gloucestershire, and Pembrokeshire, children and young people participate in seasonal farming tasks alongside experienced farm teams and partner Farmers. Quite simply, we "grow children". During a week in wellies our beneficiaries experience a profound connection to our animals and land, develop a sense of their own social and moral responsibility to be stewards of our planet, and leave us as more curious, courageous, and compassionate young people who are able to forge and sustain committed relationships with teachers and peers.

What do children learn?

Days start early on our immersive five-day residential and, whilst the cycle of the seasons and vagaries of the weather ensure that each day is different, there is a reassuring routine and structure to life on the farm. The days comprise a combination of physical farm and cooking tasks that anchor the young person to an understanding of the field > farm > fork journey. Farm tasks include compassionately tending to the animals and their welfare, as well as sowing or harvesting produce. A better understanding of where food comes improves food choices, increases the consumption of fresh, locally produced meat, fruit, and vegetables and can help young people to develop longer term commitments to leading a healthier life.

Our focus on nature nurture is delivered through wellbeing activities to induce greater nature connectedness, including long biodiversity walks, birdwatching on the coast and the riverside, beekeeping sessions, sustainable arts and crafts, mindfulness sessions, storytelling, poetry, and astronomy. Collaborating on tasks never previously attempted develops courage, confidence, and curiosity.

Children and young people learn to be mindful, empathetic, and to notice their environment. They learn to take responsibility for themselves, each other, and work in harmony with the animals and the land. Free from digital intrusion, their analogue imaginations are liberated, and they enjoy mental health respite from the pressures of a life lived online.

Being on the farm gives each child or young person that space to just be. With reduced stress levels, increased freedom and more meaningful interactions and connections, young people return home having developed greater resilience and attained an enormous sense of pride from being a "Farmer for a Week."

Farms for City Children knows that our week empowers active citizenship in our young people. Alumni contact us to report that their relationship with nature has been sustained from their visit on the farm as a child into adulthood. We know that the impact of providing these experiences in childhood means that we will give young people the agency to deal with the climate emergency and the loss of biodiversity. We are supporting them to 'grow up greener' and contribute to a sustainable future economy.

Farms for City Children Limited

Report of the Trustees for the year ending 31 August 2025

Our purposes and activities (continued)

In the short term, we know that children and young people return happy and fulfilled, walking a little taller with knowledge, skills, and expertise that they did not have when they set off from home. They will never forget the memories they make, the relationships they cultivated, or the way that they felt about themselves as they flourished through a week of “muck and magic” at Farms for City Children.

The Impact of our offer

Increased learning and engagement

Outdoor learning experiences provide a relevance and depth to the curriculum in ways that can be difficult to achieve in the classroom.

Learning in nature through hands-on tasks provides opportunities to be adventurous and creative. It gives children and young people the chance to step out of comfort zones and challenge themselves.

Our visiting farmers build knowledge and understanding alongside developing life skills that will serve them both inside the classroom and in their wider lives.

A week on one of our farms not only grows motivation for learning once children and young people have returned to school; it provides knowledge and experiences that will be remembered for a lifetime.

This year, thanks to support from the Ernest Cook Trust, we have forged new long-term partnerships with two schools with whom we work at greater depth. With this support, we have embedded food, farming and outdoor learning as part of a whole school approach.

Improved connections and wellbeing

Our visiting young farmers are given an invaluable opportunity to decompress from daily life, disconnect from the digital world and boost their physical and emotional health.

Farm tasks boost confidence, teamwork skills and resilience, creating opportunities to achieve outside the classroom. Natural crafts, nature walks and mindfulness sessions give children and young people the space to be in the moment, as well as tools to support their own wellbeing in the future.

Through having time to share experiences together, connections are renewed and deepened, supporting improved engagement and behaviour upon returning to the classroom.

Enhanced environmental citizenship

A week at one of our farms inspires children to engage with the natural world around them and connect with where their food comes from.

They learn through caring for livestock, planting and harvesting produce and enjoying tasty, nutritious food that they have helped to grow and prepare.

Our purposes and activities (continued)

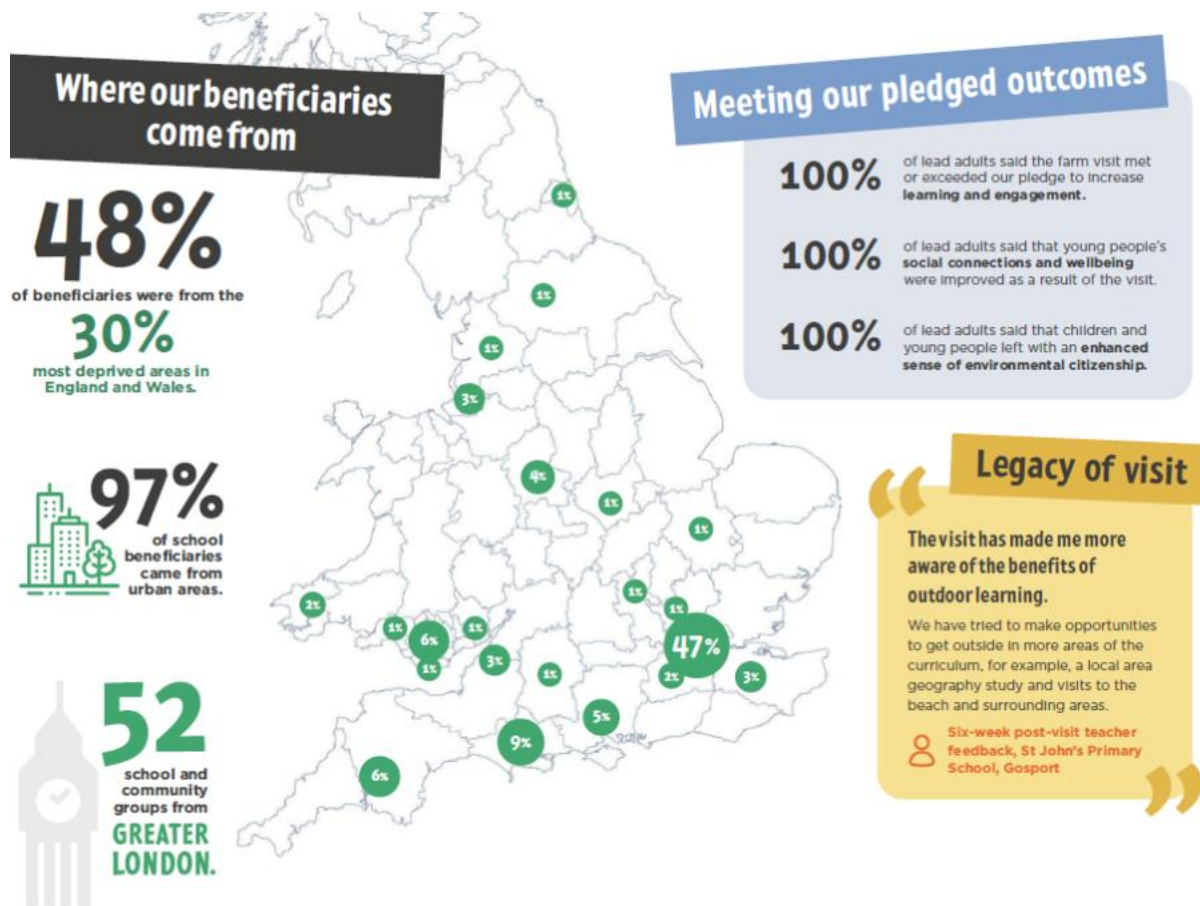
By being actively involved in nature-friendly farming practices during their time on the farm, children and young people absorb vital knowledge about environmental conservation, biodiversity and climate protection.

Children and young people leave our farms with an enhanced feeling of connection to the natural world, a greater sense of its value and a clear understanding of the role they play in caring for it.

Achievements and performance



Achievements and performance (continued)



Nethercott House

2024-25 has been a very fruitful year at Nethercott House with so many children experiencing life on a farm and some exciting new developments to our offer.

As well as residential visits for primary and secondary schools, we have welcomed back young people from NESCOL college and two new cohorts of Duke of Edinburgh participants. It has been wonderful to see young farmers of all ages thriving during their week of practical farm to fork learning and time in nature.

Support from the Countryside Stewardship Scheme has also enabled us to host day visits for younger pupils from local schools, offering them a practical and fun introduction to nature-friendly farming.

Achievements and performance (continued)

Farms for City Children Limited

Report of the Trustees for the year ending 31 August 2025

We have made operational improvements at Burrow Farm as a result of a generous grant from the Phoebe Wortley-Talbot Charitable Trust. This funding also supported the creation of a new wetland habitat and traditional orchard, boosting biodiversity and further enriching the learning experiences we offer.

The farm has provided a venue for the Woodland Trust and members of the Devon Wildlife Trust to undertake training in agroforestry and nature-friendly farming practices respectively. Our volunteers continue to provide invaluable support to the farm team, helping us produce fruit and vegetables for the house as well as preparing tasks for visiting children for the week ahead.

Once again, our annual Christmas Tree Festival Festive Feast and Open Garden events have offered a wonderful opportunity to welcome supporters and members of our local community. We have also been able to take the farm out into the local area, proudly showcasing our produce and native breed Dartmoor sheep at produce and livestock shows.

Lower Treginnis

We have enjoyed a productive and rewarding year at Lower Treginnis, hosting 42 weeks of bookings and making exciting developments to our farm and nature education offer.

Our activity programme has been enhanced by the introduction of birdwatching, with a focus on building observation and listening skills, alongside nature-connection. Local partners continued to enrich the experience of visiting children and young people, including sessions from Câr-y-Môr - the UK's first community-owned seaweed and shellfish farm, illustrator Jackie Morris and Children's Laureate for Wales, Nicola Davies.

The number of Welsh schools visiting the farm increased again this year, supported by our collaboration with the Ernest Cook Trust's outdoor learning programme and our local fundraisers, the Friends of Treginnis.

As well as our traditional school groups, we have welcomed children and young people from a diverse range of community groups and programmes. This summer saw our first Duke of Edinburgh Gold Award residential, with 17 young people making an invaluable contribution to vital farm maintenance projects.

We have begun working in partnership with the National Trust to explore ways that we can create richer habitats and boost biodiversity on our land.

Finally, this year has seen some memorable events, including a very special visit from the charity's patron, Her Royal Highness the Princess Royal. In June, we were delighted to open our gates for Open Farm Sunday for the first time in several years, giving over a hundred visitors from the surrounding community a taste of the magic of the Farms for City Children experience.

Farms for City Children Limited

Report of the Trustees for the year ending 31 August 2025

Achievements and performance (continued)

Wick Court

We are proud to report another year of growth at Wick Court, increasing our reach and enriching our programme offer to support an increasingly diverse range of beneficiaries.

We have extended a warm welcome to more children and young people from the north of England, with schools visiting us from West Yorkshire, Lancashire and Sunderland. Our youth group and secondary school offer has been developed to maximise the benefits of time on the farm for older and harder- to-engage young people.

With support from the Ernest Cook Trust's outdoor learning programme, we have also been able to deliver outreach activities at a new partner school, for those who could not attend the residential week itself.

Our work to protect and enhance our natural environment has included native hedge planting and splitting the size of grazing fields to increase biodiversity. We have developed our produce room to help us minimise garden waste alongside reducing use of plastics and moving to more environmentally friendly cleaning products in our house and kitchen.

2024-25 has been a strong year for volunteering at Wick Court, thanks to the combination of the expansion of our regular long-term volunteer team plus fourteen days of volunteer working parties from the charity's corporate partners.

Our annual Open Farm Sunday event in June was another great success, with over 450 members of the public enjoying a day on our farm achieving a record amount of fundraising income. Away from the farm, we have been actively engaging with the NFU AgriFutures Challenge Events to support improved diversity in the wider agricultural sector, with learning proving invaluable to the charity's Inclusion, Diversity, Equity and Accessibility (IDEA) work.

Farms for City Children Limited

Report of the Trustees for the year ending 31 August 2025

Fundraising

Through its fundraising Farms for City Children subsidises every visit to its farms by 54% to ensure affordability and accessibility for all children and young people regardless of their background.

The fundraising team remains stable and at its full complement of two grant fundraisers, an individual giving and legacy manager, a corporate partnerships manager, our Head of Fundraising and our Supporter and Database Administrator.

Key income streams remain as, grants from a variety of trusts and foundations, individual giving and corporate support. This last year has seen a growth in major individual gifts and in-memory donations. Whilst income in some areas has grown, we have continued to be challenged by the ever-changing grants sector, meaning that we fell £27k short of budget and that we must continue to diversify our fundraising and grow other sources of income.

Through consistency and stewardship of supporters, that we pride ourselves in, the charity successfully raised over £1.483 million for delivery and core costs, capital projects, and additional school/group financial support for visits, known internally as access funds.

Our sincere thanks go to every supporter; we are encouraged by our loyal donors and grateful for those who are new to the work of Farms for City Children. The support received in the year has helped us meet the ever-increasing need for high quality access to food, farming, and outdoor learning for today's children and young people.

As our expenditures grows with increases in staffing and running costs of the farms and our programme there comes a greater demand on our fundraising and earned income.

Trusts and Foundations

Grant support from trusts and foundations makes up two thirds of our fundraised income. Multi-year and unrestricted support play a vital role in future planning and delivery of our programme.

We are pleased to have maintained the support of numerous loyal grant funders and delighted to have welcomed new funders to the charity.

We pride ourselves on excellent stewardship and extend our gratitude to the small and medium grant makers who are integral to our programme each year alongside grant funders who have entrusted us with large and multi-year gifts which make a significant difference to our strategic planning and financial security.

We are pleased to acknowledge some of our long-standing grant funders including the Garfield Weston Foundation, the Nineveh Charitable Trust, NFU Mutual Charitable Trust, the Underwood Trust and the Ashley Family Foundation for their support of our Welsh farm. We also welcomed the Health Lottery Foundation as a new grant funder.

Most of our access funding to provide additional support for schools and groups is sourced from grant income including with thanks from the Eveson Trust and the John Horseman Trust.

Individual Giving Alongside our regular giving programme we ran two successful match funding campaigns.

Farms for City Children Limited

Report of the Trustees for the year ending 31 August 2025

Fundraising (continued)

The Big Give Christmas Challenge 2024 and The Childhood Trust Champions for Children 2025 both of which exceeded target raising more than £85,000, engaged new supporters and re-engaged lapsed donors.

We have also seen a growth in supporters fundraising in aid of the charity through a variety of means including the London Marathon and a South West Coast Path Challenge. For 2025/26 we have partnered with Ultra Challenges and Run for Charity to help grow this further in our 50th year.

Corporate

Corporate support this year has grown as planned. We have seen new partnerships develop and existing supporters continue and increase their donations. We have carefully aligned the charity with organisations of similar values and have hosted productive volunteer days with several partners on the farms. Several of our partners organised their own challenge events to raise funds including a London to Paris cycle event, abseiling and a ploughing match!

Legacy and In-memory

FfCC continued its partnership with Octopus Legacy to promote the benefits of leaving gifts in wills to the charity. Legacy pledges are of course income for the future, this source of income continues to be a key area for future growth, and we will retain our partnership with Octopus Legacy in 2025/26.

In-memory giving and fundraising saw a rise in donation value this year. The charity was a grateful recipient of significant in-memory fundraising for a very special young lady through of variety of events throughout the year.

Community

Community fundraised income is valued and appreciated by Farms for City Children. Wherever possible the charity supports events and fundraisers, in person, online, and with relevant materials. Across the three farms and beyond we have generous community groups raising funds in aid of FfCC to support the costs of farm residentials. Fundraising takes the form of concerts, fetes, talks and presentations, school fundraisers and much more.

Major Gifts

Major gift support over the year grew beyond our target, this was achieved largely by reallocating team time and prioritising work streams. This is an area we wish to continue growing by maintaining our valuable existing relationships whilst engaging with prospective new donors in our 50th year.

We are grateful to our major gift donors including an invaluable multi-year gift to our access fund.

Capital projects

The fully funded capital projects 'Burrow' at Nethercott House (£76,000) and the barn at Wick Court (£62,000) are now complete. In the year several small gifts were made towards specific projects.

Farms for City Children Limited

Report of the Trustees for the year ending 31 August 2025

Fundraising (continued)

Looking ahead

We acknowledge that the fundraising environment will continue to be challenging, particularly in the grants' sector, and that we must raise significant funds to enable even more children and young people to benefit from food, farming, and outdoor learning activities and to safeguard the charity for the future.

2026 will see the Charity reach a milestone – it's 50th year and with this comes a renewed sense of ambition and the opportunity to raise funds for the future.

The fundraising team will continue to work closely with the Charity's Chief Executive and Marketing and Communications Manager to realise the potential of all income streams, grow engagement and raise the profile of Farms for City Children.

In 2025/26 opportunities and efforts for income growth will focus on corporate and individual support and growing our major donor and legacy portfolios, whilst maintaining grant awards, community support.

Fundraising in practice

Farms for City Children is registered with the Fundraising Regulator and adheres to the standards set out in the Fundraising Code of Practice. The charity is committed to legal, open, honest, and respectful practice as detailed in its own Principles of Fundraising document and carries out relevant due diligence to record and justify decisions. We have not experienced any compliance issues.

Due to the nature of our work safeguarding is a key aspect in everything that we do, we always consider vulnerable people when undertaking fundraising to ensure they are respected and protected in all that we do. We do not share or sell donor data. We work closely with commercial partners to ensure that they operate to our expected standards. Our fundraising team is directly employed by Farms for City Children, and we do not employ third party fundraisers to operate on our behalf.

In the financial year we received no complaints relating to our fundraising activities. Any complaints received would be managed appropriately, by listening to the complainant, and responding with consideration and honesty in a timely manner as per our Complaints Policy which is available on our website.

Farms for City Children Limited

Report of the Trustees for the year ending 31 August 2025

Financial review

Farms for City Children Limited recorded a deficit of £64,208 in the year 2024-25 (2024: £43,876 surplus). This meant that total group funds at 31 August 2025 were £4,056,692 (2024: £4,120,900). Income from residential visits in the year ended 31 August 2025 was £1,050,295 (2024: £1,010,519). Whilst the number of residential weeks was higher in 2024-25 the average income was slightly lower due to funding provided by our fundraising and access funds.

In 2024-25 54% of all income was fundraised, with the main sources being grants, donations, and legacies. This external funding supports the additional costs of funding residential visits plus our support costs. The direct costs of running our farms were around £1.9m (2024: 1.5m) and so we needed to support approximately half these costs from elsewhere. Income from grants and donations amounted to £1,482,573 which was a 5.5% increase from 2024 (2024: £1,404,892). We received grants for capital purchases totalling £141,507 (2024: £148,510) enabling us to equip our farms to best support our service users.

Income from the sale of merchandise and letting out of farms amounted to £47,593 (2024: £73,755). This decrease is entirely attributable to a reduction in lettings income from 2024. This activity is operated by the wholly owned trading subsidiary, FFCC Enterprises Limited. In the year £51,798 (2024: 24,783) was gift aided from the trading subsidiary to the charity.

Investment income was £41,469 (2024: £41,123) and is as a result of £750,000 being put aside in long term and notice cash deposit accounts in the previous year.

Costs of charitable activities were £2,339,217 for the year which represents a notable increase to the prior year (2024: £2,168,663), the majority of which is attributable to staff cost increases. Costs of raising funds saw a substantial increase of 13% in 2024 to £428,541 (2024: £377,833).

Investment powers and policy

The Trustees, having regard to the liquidity requirements of running Farms for City Children Limited, have kept available funds in several interest-bearing deposit accounts and seek to achieve a rate on deposit which matches or exceeds inflation as measured by the retail prices index. There are currently no plans to invest anywhere other than in cash deposits.

Reserves policy

At 31 August 2025, total reserves were £4,056,692 (2024: £4,120,900). Of this £3,030,743 were fixed asset reserves (2024: £2,960,077). Reserves restricted in their use at 31 August 2025 amounted to £2,717,561 (2024: £2,662,790). These are split between fixed assets and income funds. Restricted income funds are largely to support future residential visits.

Farms for City Children Limited

Report of the Trustees for the year ending 31 August 2025

Financial review (continued)

Trustees reserves policy is to maintain between 3 and 6 months operating costs in free reserves. Whilst the Trustees would ideally aim to have 6 months free reserves they recognise that this is a longer-term goal. At 31 August 2025 free reserves (unrestricted reserves less unrestricted fixed assets) of the group were within this policy and stood at £761,023 (2024: £905,505) which represents 3.3 months' operating costs at the balance sheet date.

Going concern

The 3-year business plan from 2024 to 2027 was approved in April 2024 and includes a 3-year budgetary forecast which gives financial stability whilst ensuring free reserves remain in excess of 3-months at the end of the 2027. The plan sets out the key goal to ensure financial stability which remains achievable. The Trustees therefore believe it is appropriate to prepare the Financial Statements on the going concern basis.

Plans for future periods

We look ahead to 2025-26 with great excitement, not least because it will see us celebrating a major milestone for Farms for City Children; our 50th anniversary.

Since the charity was founded by Clare and Michael Morpurgo in 1976, 104,500 children and young people have experienced a life-changing week on one of our farms.

We will ensure that 2026 provides a springboard into fifty more successful years and beyond by making the most of the opportunity to raise our profile and increase our fundraising income, together with setting out an inspirational vision for our future.

Our bookings for the year ahead are already close to capacity but we remain hugely cognisant of the financial challenges faced by the schools and community groups we serve. It is more important than ever to ensure that the experience we offer remains accessible to those who need it most.

We will do this alongside continuing to protect and enhance the natural environments on our farms and ensuring we lead by example with sustainable farming and operational practices.

There is no doubt that 2025–26 will bring both celebrations and challenges, but we remain committed to working energetically and collaboratively to ensure that more children and young people than ever before are able to take home the benefits of being farmers for a week.

Farms for City Children Limited

Report of the Trustees for the year ending 31 August 2025

Structure, Governance and Management

Governing Document

Farms for City Children Limited is a registered charity (No 325120) and a company (No 01177239) limited by guarantee. The governing document of Farms for City Children Limited is its Articles of Association dated 13th July 2021. The company was incorporated on 12 July 1974 and registered as a charity on 6 November 1974. The Trustees of the Charitable Company guarantee to contribute an amount not exceeding £1 to the assets of the Charity in the event of winding up.

Appointment, induction, and training of trustees

Trustees are recruited for their expertise, experience, and skills in a variety of relevant fields. All Trustees undertake a skills audit, and any gaps in skills are proactively considered in recruiting new Trustees. Prospective Trustees are interviewed by a nominations committee made up of the Chair of the Board and two other Trustees. Their appointment is dependent on a unanimous election by the Board. New Trustees are provided with an induction pack of reading material and an induction plan to assist them in familiarising themselves with the work, value, and ethos of the Charity. Trustees are encouraged to visit all three of the farms, and to attend any relevant events alongside their attendance at quarterly meetings. Board wide training is arranged as required. Trustees serve a 3-year term and are eligible for two further 3-year terms up to a maximum of 9 years. As Founders, Sir Michael and Lady Morpurgo are not subject to a maximum term of office as Trustees. In 2025 Andrew Bailey stepped down from his Trustee position, and we thank him for his commitment to FfCC. During the year, as part of a successful recruitment campaign in 2024 we welcomed Alexandra Hollingshead to the Board in October 2024.

The Trustee Board uses the Charity Governance Code as the basis for the development of the Charity's governance structures and ongoing monitoring of its governance systems and processes. The Board of Trustees undergo regular training and professional development to ensure they remain abreast of current developments, changes in statutes and best practice.

The Trustees ensure the accuracy and timeliness of all financial reporting information through the Finance & Resources Committee, which reviews all financial information and progress on income generation and fundraising strategies. The Finance & Resources Committee, which meets on a quarterly basis, develops, and monitors the Charity's Financial Procedures and Risk Register.

In addition, it reviews operational risks in relation to employment issues as well as keeping abreast of changes in employment law and developing relevant policies. The Finance & Resources Committee also reviews the Health & Safety Policy prior to consideration and approval by the full Board.

The Board routinely meets on a quarterly basis to review the Charity's performance, consider the financial reports and reports from the Senior Leadership Team, and to decide other matters of governance and policy, as advised by the Chief Executive.

Farms for City Children Limited

Report of the Trustees for the year ending 31 August 2025

Structure, Governance and Management (continued)

There are three farms – Nethercott House, Lower Treginnis and Wick Court. We also have an office outside Exeter, Huxham Barns, which is used by our support teams. As many of our support team are now remotely based, this substantially reduced office space is on a lease which ends in 2027 with no plans to renew. Each farm is managed by the Farm School Manager with the support of a Farm Operations Manager and a team of staff who provide the sessions for the children, manage the accommodation, and care for the livestock.

Related parties and co-operation with other organisations

None of our Trustees receive remuneration or other benefit from their work as Trustees with the Charity. Related party relationships are monitored, and a Trustees' Register of Interests maintained and checked annually. Any updates to the Register of Interests or potential conflicts due to the items shown on the agenda are recorded at the start of every Board meeting.

Pay policy for senior staff

The Directors, who are the Charity's Trustees, consider themselves, the Senior Leadership Team, and the Farm School Managers to be the key management personnel in charge of directing and controlling, running, and operating the Charity on a day-to-day basis. All Directors give of their time freely and no Director received remuneration for being a Director/Trustee in the year. Details of related party transactions are disclosed in note 15 to the accounts.

The Finance & Resources Committee meet in the Spring to review all salaries, including those of the Chief Executive and Senior Leadership Team. In their decisions they are informed by the recommendations of the Chief Executive (except in the case of their own salary) and by the Charity's pay policy and scales, which are benchmarked and reviewed every three years.

Risk management

The Trustees review the objectives, services, management, and funding of the organisation as part of an ongoing planning and review process. The Finance & Resources Committee reviews the risk process, reviewing the Risk Register quarterly. There are also routes for any additional areas of concern highlighted through routine reports or arising through changes in external circumstances, new activities, or changes in the law. The risk is assessed, and any further action is identified, and parameters are agreed. The Senior Leadership Team assesses day to day risks using the Risk Register as a management tool to ensure the constant mitigation of potential risks.

The Trustees have reviewed the major risks that could impact on Farms for City Children. These are:

Farms for City Children Limited

Report of the Trustees for the year ending 31 August 2025

Risk	Mitigation
Financial: The charity relies heavily on two primary sources of income (payments from visiting school groups and charitable donations) and has a high fixed cost base which is subject to inflationary pressures.	Investment in fundraising to further develop diversity of fundraising income and diversify income streams, increasing operational weeks to 120 weeks and maximizing occupancy levels to maximize residential income and increase investment income by ensuring capital is working as effectively as possible.
Financial pressures for our beneficiaries: Parents and schools may be unable to afford a residential visit.	Offering more funding to reduce the cost of a farm visit for the children most in need.
Health and Safety: There are considerable health & safety risks associated with farming and with children working in a farm environment.	Following best practice in terms of children working on a farm, and work alongside health & safety advisers to ensure action plans are appropriate and effected.
Child protection and safeguarding: There are inherent child protection and safeguarding risks in any residential setting.	Ensure up to date safeguarding policy and procedures are working effectively. Trustees with particular specialty in safeguarding.

Trustees' responsibilities in relation to the Financial Statements

The Trustees (who are also the Directors of the Farms for City Children Limited for the purposes of company law) are responsible for preparing a Trustees' Annual Report and financial statements in accordance with applicable law and United Kingdom Accounting Standards (United Kingdom Generally Accepted Accounting Practice).

Company law requires the Trustees to prepare Financial Statements for each year that give a true and fair view of the state of affairs of the Charity and of the incoming resources and application of resources, including the income and expenditure for that period. In preparing the Financial Statements, the Trustees are required to:

- select suitable accounting policies and then apply them consistently;
- observe the methods and principles in the Charities SORP;
- make judgements and estimates that are reasonable and prudent;
- state whether applicable UK accounting standards have been followed, subject to any material departures disclosed and explained in the financial statements;
- prepare the Financial Statements on the going concern basis unless it is inappropriate to presume that Farms for City Children will continue in business.

Farms for City Children Limited

Report of the Trustees for the year ending 31 August 2025

Trustees' responsibilities in relation to the Financial Statements (continued)

The Trustees are responsible for keeping proper accounting records that disclose with reasonable accuracy at any time the financial position of Farms for City Children and to enable them to ensure that the Financial Statements comply with the Companies Act 2006. They are also responsible for safeguarding the assets of Farms for City Children and hence taking reasonable steps for the prevention and detection of fraud and other irregularities.

The Trustees are responsible for the maintenance and integrity of the corporate and financial information included on Farms for City Children's website. Legislation in the United Kingdom governing the preparation and dissemination of Financial Statements may differ from legislation in other jurisdictions.

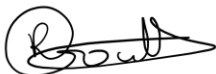
Statement as to disclosure to our auditors

In so far as the Trustees are aware at the time of approving our Trustees' Annual Report:

- there is no relevant information, being information needed by the auditor in connection with preparing their report, of which Farms for City Children's auditor is unaware, and
- the Trustees, having made enquiries of fellow Trustees and Farms for City Children's auditor that they ought to have individually taken, have each taken all steps that he/she is obliged to take as a Trustee in order to make themselves aware of any relevant audit information and to establish that the auditor is aware of that information.

Small companies provision statement

- This report has been prepared in accordance with the small companies regime under the Companies Act 2006.



By order of the Board of Trustees
Rachel Goult (Chair)

Farms for City Children Limited

Independent Auditor's report to the Members of Farms for City Children Limited for the Year Ended 31 August 2025

Opinion

We have audited the Financial Statements of Farms for City Children Limited “the charitable parent company” and its subsidiaries (the “group”) for the year ended 31 August 2025, which comprise the Consolidated Statement of Financial Activities (including the Income and Expenditure Account), the Consolidated Balance Sheet, Balance Sheet, Consolidated Cash Flow Statement and the related notes. The financial reporting framework that has been applied in their preparation is applicable law and United Kingdom Accounting Standards, including FRS 102 “The Financial Reporting Standard applicable in the UK and Republic of Ireland” (United Kingdom Generally Accepted Accounting Practice).

In our opinion, the financial statements:

- give a true and fair view of the state of the group's and parent charity's affairs as at 31 August 2025 and of its incoming resources and application of resources profit for the year then ended;
- have been properly prepared in accordance with United Kingdom Generally Accepted Accounting Practice; and
- have been prepared in accordance with the requirements of the Companies Act 2006.

Basis for opinion

We conducted our audit in accordance with International Standards on auditing (UK) (ISAs (UK)) and applicable law. Our responsibilities under those standards are further described in the Auditor's responsibilities for the audit of the financial statements section of our report. We are independent of the group in accordance with the ethical requirements that are relevant to our audit of the financial statements in the UK, including the FRC's Ethical Standard, and we have fulfilled our other ethical responsibilities in accordance with these requirements. We believe that the audit evidence we have obtained is sufficient and appropriate to provide a basis for our opinion.

Conclusions relating to going concern

In auditing the financial statements, we have concluded that the Trustees' use of the going concern basis of accounting in the preparation of the Financial Statements is appropriate.

Based on the work we have performed, we have not identified any material uncertainties relating to events or conditions that, individually or collectively, may cast significant doubt on the group's ability to continue as a going concern for a period of at least twelve months from when the original Financial Statements were authorised for issue.

Our responsibilities and the responsibilities of the Trustees with respect to going concern are described in the relevant sections of this report.

Farms for City Children Limited

Independent Auditor's report to the Members of Farms for City Children Limited for the Year Ended 31 August 2025

Other information

The other information comprises the information included in the annual report, other than the Financial Statements and our auditor's report thereon. The Trustees (who are also the Directors of the charitable company for the purposes of company law) are responsible for the other information. Our opinion on the Financial Statements does not cover the other information and, except to the extent otherwise explicitly stated in our report, we do not express any form of assurance conclusion thereon.

In connection with our audit of the Financial Statements our responsibility is to read the other information and, in doing so, consider whether the other information is materially inconsistent with the Financial Statements or our knowledge obtained in the audit or otherwise appears to be materially misstated. If we identify such material inconsistencies or apparent material misstatements, we are required to determine whether there is a material misstatement in the Financial Statements or a material misstatement of the other information. If, based on the work we have performed, we conclude that there is a material misstatement of this other information, we are required to report that fact.

We have nothing to report in this regard.

Opinions on other matter prescribed by the Companies Act 2006

In our opinion, based on the work undertaken in the course of the audit:

- the information given in the Trustees' report, which includes the Directors' report prepared for the purposes of company law, for the financial year for which the Financial Statements are prepared is consistent with the Financial Statements; and
- the Directors' report included within the Trustees' report have been prepared in accordance with applicable legal requirements.

Matters on which we are required to report by exception

In the light of the knowledge and understanding of the group and the parent charitable company and its environment obtained in the course of the audit, we have not identified material misstatements in the Directors' report included within the Trustees' report.

We have nothing to report to you in respect of the following matters in relation to which Companies Act 2006 requires us to report to you if, in our opinion:

- adequate accounting records have not been kept, or returns adequate for our audit have not been received from branches not visited by us; or
- the Financial Statements are not in agreement with the accounting records and returns; or
- certain disclosures of Trustees' remuneration specified by law are not made; or
- we have not received all the information and explanations we require for our audit.

Farms for City Children Limited

Independent Auditor's report to the Members of Farms for City Children Limited for the Year Ended 31 August 2025

Responsibilities of trustees

As explained more fully in the Trustees' Responsibilities Statement set out on page 17, the Trustees (who are also the Directors of the charitable company for the purposes of company law) are responsible for the preparation of the Financial Statements and for being satisfied that they give a true and fair view, and for such internal control as the Trustees determine is necessary to enable the preparation of Financial Statements that are free from material misstatement, whether due to fraud or error.

In preparing the Financial Statements, the Trustees are responsible for assessing the charitable company's ability to continue as a going concern, disclosing, as applicable, matters related to going concern and using the going concern basis of accounting unless the Trustees either intend to liquidate the charitable company or to cease operations, or have no realistic alternative but to do so.

Auditor's responsibilities for the audit of the Financial Statements

Our objectives are to obtain reasonable assurance about whether the Financial Statements as a whole are free from material misstatement, whether due to fraud or error, and to issue an auditor's report that includes our opinion. Reasonable assurance is a high level of assurance, but is not a guarantee that an audit conducted in accordance with ISAs (UK) will always detect a material misstatement when it exists. Misstatements can arise from fraud or error and are considered material if, individually or in the aggregate, they could reasonably be expected to influence the economic decisions of users taken on the basis of these financial statements.

The extent to which our procedures are capable of detecting irregularities, including fraud is detailed below:

- We identified areas of laws and regulations that could reasonably be expected to have a material effect on the financial statements from our general commercial and sector experience and through discussion with the trustees and other management. We communicated identified laws and regulations throughout our team, and remained alert to any indications of non-compliance throughout the audit.
- The charity is subject to laws and regulations that govern the preparation of the financial statements, including financial reporting legislation, and other companies legislation. The company is also subject to other laws and regulations where the consequences of non-compliance could have a material impact on the amounts of disclosures within the financial statements, including employment, anti-bribery, anti-money laundering and certain aspects of companies legislation.
- Owing to the inherent limitations of an audit, there is an unavoidable risk that we may not have detected some material misstatements in the financial statements, even though we have properly planned and performed our audit in accordance with auditing standards. In any audit, there remains a higher risk of non-detection of irregularities, as these may involve collusion, forgery, intentional omissions, misrepresentations, or the override of internal controls. We are not responsible for preventing non-compliance and cannot be expected to detect non-compliance with all laws and regulations.

Farms for City Children Limited

Independent Auditor's report to the Members of Farms for City Children Limited for the Year Ended 31 August 2025

As part of an audit in accordance with ISAs (UK), we exercise professional judgement and maintain professional scepticism throughout the audit. We also:

- Identify and assess the risks of material misstatement of the financial statements, whether due to fraud or error, design and perform audit procedures responsive to those risks, and obtain audit evidence that is sufficient and appropriate to provide a basis for our opinion. The risk of not detecting a material misstatement resulting from fraud is higher than for one resulting from error, as fraud may involve collusion, forgery, intentional omissions, misrepresentations, or the override of internal control.
- Obtain an understanding of internal control relevant to the audit in order to design audit procedures that are appropriate in the circumstances, but not for the purpose of expressing an opinion on the effectiveness of the group's internal control.
- Evaluate the appropriateness of accounting policies used and the reasonableness of accounting estimates and related disclosures made by the trustees.
- Conclude on the appropriateness of the trustees use of the going concern basis of accounting and, based on the audit evidence obtained, whether a material uncertainty exists related to events or conditions that may cast significant doubt on the group's or the parent charitable company's ability to continue as a going concern. If we conclude that a material uncertainty exists, we are required to draw attention in our auditor's report to the related disclosures in the financial statements or, if such disclosures are inadequate, to modify our opinion. Our conclusions are based on the audit evidence obtained up to the date of our auditor's report. However, future events or conditions may cause the group or the parent charitable company to cease to continue as a going concern.
- Evaluate the overall presentation, structure and content of the financial statements, including the disclosures, and whether the financial statements represent the underlying transactions and events in a manner that achieves fair presentation.
- We communicate with those charged with governance regarding, among other matters, the planned scope and timing of the audit and significant audit findings, including any significant deficiencies in internal control that we identify during our audit.

Use of our report

This report is made solely to the charitable parent company's members, as a body, in accordance with Chapter 3 of Part 16 of the Companies Act 2006. Our audit work has been undertaken so that we might state to the group members those matters we are required to state to them in an auditor's report and for no other purpose. To the fullest extent permitted by law, we do not accept or assume responsibility to anyone other than the charitable parent company and its members as a body for our audit work, for this report, or for the opinions we have formed.

Farms for City Children Limited

**Independent Auditor's report to the Members of Farms for City Children
Limited for the Year Ended 31 August 2025**

Catherine Williams FCA DChA

Senior Statutory Auditor

For and on behalf of

Westcotts (SW) LLP

47 Boutport Street

Barnstaple

Devon

EX31 1SQ

Date:

Farms for City Children Limited
Consolidated Statement of Financial Activities
(including consolidated Income and Expenditure Account)
for the year ending 31 August 2025

	Note	Unrestricted Funds £	Restricted Funds £	Total Funds 2025 £	Total Funds 2024 £
Income					
<i>Donations and legacies</i>					
Donations and legacies	3	788,326	142,269	930,595	939,945
<i>Income from charitable activities:</i>					
Charitable activities	4	1,122,095	551,978	1,674,073	1,523,980
<i>Income from other trading activities:</i>					
Trading operations	5	57,412		57,412	85,324
Investment income	6	41,469		41,469	41,123
Total income		2,009,302	694,247	2,703,549	2,590,372
Expenditure					
Costs of raising funds	7	428,541		428,541	377,833
<i>Expenditure on charitable activities:</i>					
Charitable activities	8	1,697,358	641,860	2,339,217	2,168,663
Total expenditure		2,125,897	641,860	2,767,757	2,546,496
Gain/(loss) on sale of fixed assets					-
Transfer between funds		(2,384)	2,384	0	-
Net (expenditure)/income and net movement in funds for the year	10	(118,979)	54,771	(64,208)	43,876
Reconciliation of funds					
Total Funds brought forward		1,458,112	2,662,788	4,120,900	4,077,024
Total funds carried forward		1,339,133	2,717,559	4,056,692	4,120,900

The statement of financial activities includes all gains and losses recognised in the year.

All income and expenditure derive from continuing activities.

The prior year Consolidated Statement of Financial Activities is provided in note 27.

The notes on pages 26 to 45 form an integral part of the Financial Statements.

Farms for City Children Limited
Consolidated Balance Sheet as at 31 August 2025

	Note	Group 2025 £	Group 2024 £	Charity 2025 £	Charity 2024 £
Fixed assets					
Tangible assets	18	3,030,744	2,960,077	3,030,744	2,960,077
Investment	11	0	-	1	1
Total Fixed Assets		3,030,744	2,960,077	3,030,745	2,960,078
Current assets					
Stock	19	52,740	47,877	41,023	38,651
Debtors	20	139,948	101,225	163,797	120,561
Cash at bank and in hand	21	1,482,991	1,578,127	1,422,769	1,496,698
Total Current Assets		1,675,678	1,727,229	1,627,589	1,655,910
Liabilities					
Creditors falling due within one year	22	(649,730)	(566,406)	(649,497)	(566,374)
Net Current assets		1,025,949	1,160,823	978,092	1,089,536
Net assets		4,056,692	4,120,900	4,008,837	4,049,614
The funds of the Group:					
23					
Unrestricted funds					
Income		761,024	905,506	713,167	834,220
Fixed assets		578,107	552,606	578,107	552,606
<i>Total</i>		<i>1,339,131</i>	<i>1,458,112</i>	<i>1,291,276</i>	<i>1,386,826</i>
Restricted funds					
Income		264,925	255,317	264,925	255,317
Fixed assets		2,452,636	2,407,471	2,452,636	2,407,471
<i>Total</i>		<i>2,717,561</i>	<i>2,662,788</i>	<i>2,717,561</i>	<i>2,662,788</i>
Total group funds		4,056,692	4,120,900	4,008,837	4,049,614

The trustees have prepared group accounts in accordance with section 398 of the Companies Act 2006 and section 138 of the Charities Act 2011. These accounts are prepared in accordance with the special provisions of Part 15 of the Companies Act relating to small companies and constitute the annual accounts required by the Companies Act 2006 and are for circulation to members of the company.

These financial statements were approved by the members of the Board authorised for issue on the 28th January 2026 and are signed on their behalf by:

Signed



Rachel Goult, Chair of Board on behalf of the Trustees

The notes on pages 26 to 45 form an integral part of the Financial Statements.

Farms for City Children Limited
Statement of Cash Flows and Consolidated Statement of Cash Flows
for year ending 31 August 2025

	Note	Group 2025 £	Group 2024 £	Charity 2025 £	Charity 2024 £
Cash generated by/(used in) operating activities	26	29,337	182,245	50,544	155,543
Cash flows (used in)/generated by investing activities					
Interest income		41,469	41,123	41,469	41,123
Repayment of investment from FFCC Enterprises Ltd			-		-
Sale of tangible fixed assets		-	1,750	-	1,750
Purchase of tangible fixed assets		(165,943)	(127,667)	(165,943)	(127,667)
Cash (used in) investing activities		(124,474)	(84,794)	(124,474)	(84,794)
Cash (used in) financing activities		-	-	-	-
Increase/(decrease) in cash and cash equivalents in the year		(95,137)	97,451	(73,929)	70,749
Cash and cash equivalents at the beginning of the year		1,578,127	1,480,676	1,496,698	1,425,949
Total cash and cash equivalents at the end of the year		1,482,990	1,578,127	1,422,769	1,496,698

The notes at pages 29 to 48 form an integral part of the Financial Statements.

Farms for City Children Limited

Notes to the accounts for the year ending 31 August 2025

1. Accounting Policies

The principal accounting policies adopted, judgements and key sources of estimation uncertainty in the preparation of the Financial Statements are as follows:

a) Basis of preparation

The Financial Statements have been prepared in accordance with Accounting and Reporting by Charities: Statement of Recommended Practice applicable to charities preparing their accounts in accordance with the Financial Reporting Standard applicable in the UK and Republic of Ireland (FRS 102) (effective 1 January 2019) - (Charities SORP (FRS 102)), the Financial Reporting Standard applicable in the UK and Republic of Ireland (FRS 102) and the Companies Act 2006.

Farms for City Children meets the definition of a public benefit entity under FRS102. Assets and liabilities are recognised at historical cost or transaction value unless otherwise stated in the relevant accounting policy note(s).

The Financial Statements are prepared in sterling, which is the functional currency of the entity.

b) Group financial statements

The financial statements consolidate the accounts of the charity Farms for City Children Ltd, company number 01177239, and its wholly owned subsidiary FFCC Enterprises Ltd, company number 03804473, on a line-by-line basis. A separate Statement of Financial Activities and Income and Expenditure account for the Charity has not been presented because the Charity has taken advantage of the exemption afforded by section 408 of the Companies Act 2006. The deficit for the Charity for the year was £40,788.

c) Reconciliation with previous Generally Accepted Accounting Practice

In preparing the accounts, the Trustees have considered whether in applying the accounting policies required by FRS 102 and the Charities SORP FRS 102 the restatement of comparative items is required.

d) Judgements and key accounting estimates

The preparation of the financial statements requires management to make judgements, estimates and assumptions that affect the amounts reported. These estimates and judgements are continually reviewed and are based on experience and other factors, including expectations of future events that are believed to be reasonable under the circumstances.

Farms for City Children Limited

Notes to the accounts for the year ending 31 August 2025

1. Accounting Policies (continued)

Significant judgements

The judgements (apart from those involving estimations) that management has made in the process of applying the entity's accounting policies and that have the most significant effect on the amounts recognised in the financial statements are as follows:

- Determination of whether there are indicators of impairment of the Charity's tangible fixed assets. Factors taken into consideration in reaching such a decision include the economic viability and expected future financial performance or charitable use of the asset.
- Determination of whether leases entered into by the Charity as lessee are operating or finance leases. These decisions depend on an assessment of whether the risks and rewards of ownership have been transferred from the lessor to the lessee on a lease-by-lease basis.
- Determination of recoverability of trade debtors. A specific provision is made against certain debts where in the opinion of the Trustees the debt is not fully recoverable.

e) Preparation of the accounts on a going concern basis

As explained in the Trustees' Annual Report, the Trustees have approved a detailed budget for 2025-26, based on the all-year round operating model with plans for investment in fundraising for future income growth. Having taken into consideration the availability of cash and the level of forecast reserves the Trustees believe it is appropriate to prepare the Financial Statements on the going concern basis.

f) Income recognition policies

Items of income are recognised and included in the accounts when all of the following criteria are met:

- the Charity has entitlement to the funds;
- any performance conditions attached to the item(s) of income have been met or are fully within the control of the Charity;
- there is sufficient certainty that receipt of the income is considered probable; and
- the amount can be measured reliably.

Income from residential visits is accounted for when a school visits one of the charity's three farms. Payments received in advance of the visit are deferred until the criteria for income recognition are met.

Other trading activities are accounted for in the accounting period to which the income relates.

Farms for City Children Limited

Notes to the accounts for the year ending 31 August 2025

1. Accounting Policies (continued)

g) Donated services and facilities

Donated services or facilities are recognised as income when the Charity has control over the item, any conditions associated with the donated item have been met, the receipt of economic benefit from the use by the Charity of the item is probable and that economic benefit can be measured reliably. On receipt, donated services and facilities are recognised on the basis of the value of the gift to the Charity which is the amount the Charity would have been willing to pay to obtain services or facilities of equivalent economic benefit on the open market; a corresponding amount is then recognised in expenditure in the period of receipt. The value of goods and services donated in kind in the year and included in donations is £nil (2024: £5,355).

h) Interest receivable

Interest on funds held on deposit is included when receivable and the amount can be measured reliably by the Charity; this is normally upon notification of the interest paid or payable by the Bank.

i) Fund accounting

Unrestricted funds are available to spend on activities that further any of the purposes of the Charity. Restricted funds are donations which the donor has specified are to be solely used for particular areas of the Charity's work or for specific projects being undertaken by the Charity.

j) Expenditure and irrecoverable VAT

Expenditure is recognised once there is a legal or constructive obligation to make a payment to a third party, it is probable that settlement will be required and the amount of the obligation can be measured reliably. Expenditure is classified under the following activity headings:

- Costs of raising funds comprise the costs of trading and their associated support costs and fundraising support costs.
- Expenditure on charitable activities includes the costs of the provision of services and activities undertaken to further the purposes of the Charity and their associated support costs.
- Farms for City Children is not registered for VAT and cannot recover VAT on any of its purchases. Irrecoverable VAT is charged as a cost against the activity for which the expenditure was incurred.

Farms for City Children Limited

Notes to the accounts for the year ending 31 August 2025

1. Accounting Policies (continued)

k) Allocation of support costs

Support costs relate to those functions that assist the Charity's work but do not directly undertake charitable activities. Support costs include back-office costs, finance, HR, payroll and governance costs which support the work of the Charity. The bases on which support costs have been allocated are set out in note 8.

l) Operating leases

The Charity classifies the lease of printing equipment as an operating lease; the title to the equipment remains with the lessor and the equipment is replaced every 5 years whilst the economic life of such equipment is normally 10 years. Rental charges are charged on a straight-line basis over the term of the lease.

The Charity leases offices at Huxham Barns, Huxham, Exeter and this is classified as an operating lease.

The Charity leases land from the National Trust at Lower Treginnis which is also classified as an operating lease.

The Charity classifies the letting of land at Nethercott House, Lower Treginnis and Wick Court under Farming Business Tenancy agreements as operating leases; the title to the land remains with the charity as lessor. All agreements currently have an end date of 31 August 2026, but either party to each lease may terminate the lease by giving 12 months' notice. The total annual rent receivable is £9,819 (2024: £9,819).

Farms for City Children Limited

Notes to the accounts for the year ending 31 August 2025

1. Accounting Policies (continued)

m) Tangible fixed assets

Depreciation is provided on all tangible fixed assets, at rates calculated to write off the cost, less estimated residual value, of each asset over its expected useful economic life, as follows:

Asset Category	Depreciation Rate
Freehold buildings and improvements	
Nethercott House	50 years
Leasehold improvements	
Lower Treginnis	60 years
Wick Court	99 years
Plant and machinery	5 to 25 years
Furniture and equipment	5 years

Freehold land is not depreciated.

Donated fixed assets are recognised at fair value which is the amount the Charity would have been willing to pay for the items on the open market.

Assets with a value below £2,000 or a life span of less than 1 year are not capitalised within the Financial Statements but expensed to the SOFA.

n) Stock

Trading stock is included at the lower of cost and net realisable value. Net realisable value is based on selling price less any future costs expected to be incurred to completion and disposal.

Animal stocks are included at deemed cost or net realisable value. Feed and resale stock is included at cost.

o) Debtors

Trade and other debtors are recognised at the settlement amount due after any trade discount offered. Prepayments are valued at the amount prepaid net of any trade discounts due.

p) Cash at bank and in hand

Cash at bank and cash in hand includes cash and short term highly liquid investments with a short maturity of three months or less from the date of acquisition or opening of the deposit or similar account.

Farms for City Children Limited

Notes to the accounts for the year ending 31 August 2025

1. Accounting Policies (continued)

q) Creditors and provisions

Creditors and provisions are recognised where the Charity has a present obligation resulting from a past event that will probably result in the transfer of funds to a third party and the amount due to settle the obligation can be measured or estimated reliably. Creditors and provisions are normally recognised at their settlement amount after allowing for any trade discounts due.

r) Financial instruments

The Charity only has financial assets and financial liabilities of a kind that qualify as basic financial instruments. Basic financial instruments are initially recognised at transaction value and subsequently measured at their settlement value with the exception of bank loans which are subsequently measured at amortised cost using the effective interest method. The financing charge to expenditure is at a constant rate calculated using the effective interest method.

s) Pensions

The Charity contributes to an auto enrolment compliant group money purchase defined contribution pension scheme operated by NEST. New and existing employees are automatically enrolled into the money purchase scheme unless they have exercised their right to opt out of scheme membership.

Employees joining the money purchase pension scheme operated by NEST contract directly with the insurance company. The Charity makes a matching contribution of 6% (2024: 6%) of salary to this pension scheme and acts as agent in collecting and paying over employee pension contributions.

2. Legal status of the Charity

Farms for City Children is a company limited by guarantee, incorporated in England & Wales, and has no share capital. In the event of the Charity being wound up, the liability in respect of the guarantee is limited to £1 per member of the Charity.

The registered office address is Unit 2, Huxham Barns, Huxham, Exeter, EX5 4EJ.

Farms for City Children Limited

Notes to the accounts for the year ending 31 August 2025

3. Income from donations and legacies

	Unrestricted Funds 2025 £	Restricted Funds 2025 £	Total Funds 2025 £	Total Funds 2024 £
Donations	772,061	142,269	914,330	923,545
Legacies	16,265	-	16,265	16,400
	788,326	142,269	930,595	939,945

Income from donations includes Gift Aid. From time to time Farms for City Children benefits from the involvement and support of volunteers. In accordance with accounting standards, the economic contribution of general volunteers is not recognised in the accounts. Included in unrestricted donations is an amount £nil (2024: £5,355) which is the economic value of goods donated in kind.

4. Income from Charitable Activities

	Unrestricted Funds 2025 £	Restricted Funds 2025 £	Total Funds 2025 £	Total Funds 2024 £
Residential visits	1,050,295		1,050,295	1,010,519
Day visits			-	-
Grants – capital		141,507	141,507	148,510
Grants – revenue		410,471	410,471	316,437
Farm produce sales	43,054		43,054	37,858
Farm livestock sales	18,821		18,821	2,838
Rural Payments Agency grants	9,925		9,925	7,818
	1,122,095	551,978	1,674,073	1,523,980

Farms for City Children Limited

Notes to the accounts for the year ending 31 August 2025

5. Income earned from trading activities

The wholly owned trading subsidiary FFCC Enterprises Ltd is incorporated in the United Kingdom (company number 03804473) and pays all of its profits to the Charity under the gift aid scheme. FFCC Enterprises income arises from short term letting of residential accommodation on the farms and the sale of gifts, books, and cards.

A summary of the trading results is shown below.

	2025	2024
	£	£
Rent received	9,819	9,819
Holiday lets	14,017	43,884
Sales of gifts, books and cards	33,576	29,871
Miscellaneous income	-	1,750
	57,412	85,324

The summary financial performance of the subsidiary alone is:

	2025	2024
	£	£
Turnover	47,593	73,755
Cost of sales & administration costs	(19,251)	(21,957)
Net profit/(loss)	28,378	51,798
Amount gift aided to the Charity	(51,798)	(24,783)
Retained in subsidiary	(23,420)	27,015

The assets and liabilities of the subsidiary were:

Current assets	71,939	90,821
Current liabilities	(24,083)	(19,539)
Total net assets	47,856	71,282

Aggregate share capital & reserves	47,856	71,282
------------------------------------	---------------	---------------

6. Investment income

All of the group's investment income arises from money held in interest bearing deposit accounts.

Farms for City Children Limited

Notes to the accounts for the year ending 31 August 2025

7. Analysis of costs of raising funds

	2025 £	2024 £
Fundraising costs	433,287	323,528
Trading costs	(4,746)	54,305
	428,541	377,833

8. Analysis of expenditure on charitable activities

	2025 £	2024 £
<i>Operation of farms</i>		
Cost of residentials	117,224	153,731
Direct costs of farms	189,430	157,417
Premises costs	212,431	232,304
Depreciation	95,277	98,760
Other costs	437,542	107,590
Staff costs	1,274,105	1,407,028
<i>Governance costs (see note 8)</i>		
Audit & accountancy	10,740	7,720
Board costs	2,468	2,760
Staff costs	-	1,355
	2,339,217	2,168,663

Of the £2,339,217 expenditure in 2024-25 (2024: £2,168,572), £1,681,493 was charged to unrestricted funds (2025: £1,510,446) and £641,860 to restricted funds (2024: £658,126).

Farms for City Children Limited

Notes to the accounts for the year ending 31 August 2025

9. Analysis of governance and support costs

Farms for City Children initially identifies the costs of its support functions. It then identifies those costs which relate to the governance function. Having identified its governance costs, the remaining support costs are apportioned between the charitable activities, the cost of raising funds and governance.

	Analysis of support and governance costs				Basis of apportionment
	General support	Governance function	Total 2025	Total 2024	
	£	£	£	£	
Salaries, wages & related costs	297,125	-	297,125	284,644	Staff time
General office costs	248,641	2,467	251,108	211,417	% of costs
Legal fees	9,439	-	9,439	1,481	% of costs
Audit fees	-	10,740	10,740	7,720	% of costs
Total	555,205	13,207	568,412	507,569	

10. Net income/(expenditure) for the year

	2025	2024
	£	£
This is stated after charging/(crediting):		
Operating leases	32,626	29,100
Depreciation	95,277	98,757
(Profit)/Loss on disposal of fixed assets	-	(1,750)
Audit & tax fees	10,740	7,720

11. Investments

The Charity owns the sole £1 share issued by FFCC Enterprises Limited (registration number 03804473) which was incorporated to operate the charity's trading activities and began trading again from 1 September 2022 following a period when it was dormant. The registered office of FFCC Enterprises Limited is the same as that of Farms for City Children shown in the Trustees' Report. The activities and results of this company are summarised in note 5. Related party transactions are excluded as they are eliminated on consolidation.

Farms for City Children Limited

Notes to the accounts for the year ending 31 August 2025

12. Analysis of staff costs, trustee remuneration and expenses, and the cost of key management personnel

	2025 £	2024 £
Salaries and wages	1,602,814	1,472,241
Social security costs	163,994	129,709
Pension costs	91,631	80,109
Other wages costs (including subcontractors & recruitment)	33,105	26,245
	1,891,544	1,708,304

One employee had employee benefits in excess of £60,000 and in band £60,000 to £70,000 (2024: 1, £70,000 to £80,000). Pension costs are allocated to activities in proportion to the related staffing costs incurred. There were no redundancy or termination costs in the year (2024: none).

The pension costs charged represent contributions payable by the Charity to schemes for the year.

The key management personnel of Farms for City Children comprise the Chief Executive, the Head of Fundraising, the Head of Operations, the Head of Finance (2024: the same roles + the three Farm School Managers). The total employee benefits (salary and pension contributions) of the key management personnel were £220,519 – 5 people (2024: £354,599 – 8 people).

The Trustees were not paid or received any other benefits from employment with Farms for City Children in the year (2024: £nil). Three trustees were reimbursed expenses to the value of £1,930 for attending meetings in the year (2024: £2,029).

13. Staff Numbers

The average monthly number of employees (including casual and part time staff) analysed by function during the year was as follows:

	2025 Number	2024 Number
Management, Fundraising & Administration	19	19
Education, domestic & agricultural	47	38
	66	57

Farms for City Children Limited

Notes to the accounts for the year ending 31 August 2025

14. Defined contribution pension scheme

The Charity operates a defined contribution pension scheme. The pension cost charge for the year represents employer contributions payable by the charity to the scheme and amounted to £91,631 (2024: £80,109).

Employee and employer contributions totalling £9,906 (2024: £20,346) were payable to the scheme at the end of the year and are included in creditors.

15. Related party transactions

Donations from Trustees amounted to £23,602 in the year (2024: £20,481).

16. Corporation Taxation

Farms for City Children is exempt from tax on income and gains falling within section 505 of the Taxes Act 1988 or section 252 of the Taxation of Chargeable Gains Act 1992 to the extent that these are applied to its charitable objects.

17. Transfer between funds

There was 1 transfer from Unrestricted Funds to Restricted Funds in the year amounting to £2,384 (2024: £3,600). This was an accounting adjustment to appropriately restrict funds related to the car park works at Nethercott House.

Farms for City Children Limited

Notes to the accounts for the year ending 31 August 2025

18. Tangible fixed assets – charity (also comprising that of the group)

	Freehold Property	Leasehold Property	Plant & Machinery	Furniture & Equipment	Total
	£	£	£	£	£
Cost:					
As at 1 September 2024	1,085,470	2,795,491	545,569	110,544	4,537,074
Additions	50,460	99,409	16,074		165,943
Disposals	-	-	-	-	-
As at 31 August 2025	1,135,930	2,894,902	561,643	110,544	4,703,020
Depreciation:					
As at 1 September 2024	219,200	862,954	385,888	108,955	1,576,977
Disposals	-	-	-	-	-
Charge for the year	17,521	36,725	39,440	1,589	95,277
As at 31 August 2025	236,720	899,681	425,330	110,544	1,672,276
Net book value					
As at 1 September 2024	866,270	1,932,537	159,681	1,589	2,960,077
As at 31 August 2025	899,210	1,995,221	136,314	-	3,030,744

19. Stock

	Group 2025	Group 2024	Charity 2025	Charity 2024
	£	£	£	£
Animals and goods for resale	37,683	35,391	25,966	26,165
Non animal stock used in operating farms	15,057	12,486	15,057	12,485
	52,740	47,877	41,023	38,650

20. Debtors

	Group 2025	Group 2024	Charity 2025	Charity 2024
	£	£	£	£
Trade debtors	58,619	57,239	58,619	57,083
Prepayments and accrued income	81,329	43,986	81,329	43,986
Intercompany		-	23,849	19,502
	139,948	101,225	163,797	120,561

Farms for City Children Limited

Notes to the accounts for the year ending 31 August 2025

21. Cash at bank and in hand

The cash figure includes £471,020 (2024: £400,047) relating to deposits and final balances received for residential visits and holiday lets invoiced in advance.

22. Creditors

	Group 2025 £	Group 2024 £	Charity 2025 £	Charity 2024 £
Trade creditors	79,687	75,590	79,454	72,557
Other creditors and accruals	55,918	42,168	55,918	42,168
Deferred income (residential visits & holiday lets to 31 August 2024)	471,020	400,047	471,020	400,047
Taxation and social security	43,105	51,601	43,105	51,601
	649,730		649,497	
	79,687	566,406	79,454	566,373

The movement on this income invoiced in advance is as follows:

	2025 £	2024 £
Deferred income at 1 September 2024	400,047	368,172
Resources deferred in the year	1,332,861	1,046,455
Amounts released in the year	(1,261,888)	(1,014,580)
Deferred Income at 31 August 2025	471,020	400,047

Deferred income comprises deposits and balances received for residential visits and holiday lets.

Farms for City Children Limited

Notes to the accounts for the year ending 31 August 2025

23. Analysis of charitable funds

Analysis of movements in unrestricted funds

a) Year ending 31 August 2025

	Balance 1 September 2024 £	Incoming resources £	Resources expended £	Transfers £	Funds 31 August 2025 £
Unrestricted fixed asset funds	552,606	25,501	-	-	578,107
Unrestricted income funds	905,506	1,983,801	(2,125,897)	(2,384)	761,024
General fund	1,458,112	2,009,302	(2,125,897)	(2,384)	1,339,133

b) Year ending 31 August 2024

	Balance 1 September 2023 £	Incoming resources £	Resources expended £	Transfers £	Funds 31 August 2024 £
Unrestricted fixed asset funds	563,855	9,072	(20,321)	-	552,606
Unrestricted income funds	889,715	1,887,440	(1,868,049)	(3,600)	905,506
General fund	1,453,570	1,896,512	(1,888,370)	(3,600)	1,458,112

Name of unrestricted fund

Description, nature and purposes of the fund

General fund

Unrestricted funds used at the discretion of the Trustees to further any of the Charity's purposes. The Trustees' policy is to maintain the general fund at an appropriate level, planning for adverse economic conditions and other potential threats, safeguarding the long-term future of the charity and providing assurance to schools, staff and supporters.

Unrestricted fixed asset funds represents the net book value of fixed assets purchased with unrestricted funds. Those purchased with restricted funds are held as restricted fixed asset funds.

Farms for City Children Limited

Notes to the accounts for the year ending 31 August 2025

23. Analysis of movements in restricted funds (continued)

a) Year Ending 31 August 2024

	Balance 1 September 2024 £	Incoming resources £	Resources expended £	Transfers	Funds 31 August 2025 £
<u>Income funds</u>					
Geographically restricted beneficiaries	200,050	477,673	482,946	-	194,777
Access Funds	31,926	40,750	53,175	-	19,501
Burrow Farm	21,528	75,960	13,623	(58,865)	25,000
Farm equipment	1,814	63,000	2,378	(61,958)	479
Other costs	-	25,168	2,384	2,384	25,168
	200,050	477,673	482,946	-	194,777
	255,318	682,551	554,506	(118,439)	264,925
<u>Fixed Assets Funds</u>					
Nethercott House	600,260	4,677	29,057	58,865	634,745
Lower Treginnis	470,856	4,916	27,752	-	448,020
Wick Court	1,336,355	2,103	30,545	61,958	1,369,872
	2,407,472	11,696	87,354	120,823	2,452,636
Total funds	2,662,788	694,247	641,860	2,384	2,717,559

Name of restricted fund	Description, nature and purposes of the fund
Geographically restricted child places	Donations received to support children from specific geographical areas of the UK or specific schools.
Access Funds	Funding received from which was allocated to support schools that would not be able to visit our farms without additional financial support.
Residential visits (all farms)	Funding received from various funders to support residential visits.
Farm equipment	Funds received to support the purchase of farm equipment including tractors.
Burrow Farm	Income received to develop part of the site at Burrow Farm, Nethercott House.
Own use Property (all farms)	The restricted capital fund balances for Nethercott House, Lower Treginnis and Wick Court include funds received for specific capital developments, and assets including land, property values and major plant.

Farms for City Children Limited

Notes to the accounts for the year ending 31 August 2025

23. Analysis of charitable funds (continued)

b) Year Ending 31 August 2024

	Balance 1 September 2023 £	Incoming resources £	Resources expended £	Transfers	Funds 31 August 2024 £
<u>Income funds</u>					
Geographically restricted beneficiaries	60,395	474,140	(334,485)	-	200,050
Access Funds	172,360	61,000	(201,434)	-	31,926
Farm equipment	23,387	78,413	(41,462)	(58,525)	1,813
Burrow Farm		78,000	-	(56,472)	21,528
Other costs		2,307	(2,307)	-	-
	256,142	693,860	(579,688)	(114,997)	255,317
<u>Fixed Assets Funds</u>					
Nethercott House	547,630	-	(22,336)	74,966	600,260
Lower Treginnis	454,960	-	(25,713)	41,609	470,856
Wick Court	1,364,722	-	(30,389)	2,022	1,336,355
	2,367,312	-	(78,438)	118,597	2,407,471
Total funds	2,623,454	693,860	(658,126)	3,600	2,662,788

24. Analysis of net assets between funds

a) Year ending 31 August 2025

	Unrestricted Funds £	Restricted Funds £	Total £
Tangible fixed assets	578,107	2,452,636	3,030,744
Current assets	1,410,753	264,925	1,675,678
Current liabilities	(649,730)		(649,730)
Total	1,339,131	2,717,561	4,056,692

Farms for City Children Limited

Notes to the accounts for the year ending 31 August 2025 (continued)

b) Year ending 31 August 2024

	Unrestricted Funds £	Restricted Funds £	Total £
Tangible fixed assets	552,605	2,407,472	2,960,077
Current assets	1,471,913	255,316	1,727,229
Current liabilities	(566,406)	-	(566,406)
Total	1,458,112	2,662,788	4,120,900

25. Commitments under operating leases

The total future minimum lease payments under non-cancellable operating leases are as follows:

	2025 £	2024 £
Not later than 1 year	19,254	19,726
Later than 1 year and not later than 5 years	30,464	35,966
Later than 5 years	87,300	60,800
	137,018	116,492

26. Reconciliation of net movement in funds to net cash flow from operating activities

	Group 2025 £	Group 2024 £	Charity 2025 £	Charity 2024 £
Net movement in funds	(64,208)	43,876	(40,788)	16,860
Add back depreciation charge	95,277	98,757	95,277	98,757
Deduct interest income shown in investing activities	(41,469)	(41,123)	(41,469)	(41,123)
Loss/(profit) on disposal of fixed assets	-	(1,750)	-	(1,750)
Decrease/(increase) in stock	(4,863)	1,947	(2,362)	1,895
(Increase)/decrease in debtors	(38,723)	51,462	(43,237)	45,274
Increase/(decrease) in creditors	83,324	29,076	83,123	35,630
Net cash used in operating activities	29,337	182,245	50,544	155,543

Farms for City Children Limited

Notes to the accounts for the year ending 31 August 2025

27. Capital Commitments

Farms for City Children has future commitments for the following projects and expects these commitments to be contracted within the next year and financed by cash reserves and grants.

	2025	2024
	£	£
Capital expenditure that has been contracted but has not been provided for in the Financial Statements	<hr/> -	<hr/> -

Farms for City Children Limited

Notes to the accounts for the year ending 31 August 2025

28. Prior Year Consolidated Statement of Financial Activities

	Unrestricted Funds £	Restricted Funds £	Total Funds 2024 £
Income			
<i>Donations and legacies</i>			
Donations and legacies	711,032	228,913	939,945
<i>Income from charitable activities:</i>			
Charitable activities	1,059,033	464,947	1,523,980
<i>Income from other trading activities:</i>			
Trading operations	85,324	-	85,324
Investment income	41,123	-	41,123
Other income			
Total income	1,896,512	693,860	2,590,372
Expenditure			
<i>Costs of raising funds:</i>			
Trading operations	377,833	-	377,833
Fundraising support costs	1,510,537	658,126	2,168,663
<i>Expenditure on charitable activities:</i>			
Charitable activities	1,888,370	658,126	2,546,496
Total expenditure	-	-	-
Gain/(loss) on sale of fixed assets	(3,600)	3,600	-
Net (expenditure)/income and net movement in funds for the year	4,542	39,334	43,876
Reconciliation of funds			
Total Funds brought forward	1,453,570	2,623,454	4,077,024
Total funds carried forward	1,458,112	2,662,788	4,120,900