

Farms for City Children Limited
(A charitable company limited by guarantee)
Report and Financial Statements
Year ending 31 August 2022



Registered Charity Number: 325120

Registered Company Number: 01177239 (England and Wales)

Farms for City Children Limited

Reference and administrative details

Charity number: 325120
Company number: 01177239
Registered Office: Unit 2 Huxham Barns, Huxham, Exeter, EX5 4EJ

Directors and Trustees

The Directors of the Charitable Company (Charity) are its Trustees for the purpose of charity law. The Trustees and officers serving during the year and since the year end were as follows:

Chair	Simon Gregory	(resigned as Chair 14 December 2022)
	Rachel Goult	(appointed as Chair 14 December 2022)
Trustees	Sir Michael Morpurgo OBE Lady Morpurgo MBE Frances Harris Justin Albert OBE Peter Pantlin Richard Ash Andrew Bailey Jonathan Bishop Donna Edmonds Rachel Goult Simon Gregory Laura Reynolds Mel Squires	(resigned 1 November 2022) (resigned 6 October 2022) (resigned 17 December 2022) (resigned 3 September 2022) (resigned 29 April 2022)
Secretary	Lady Morpurgo MBE	
Chief Executive	Vanessa Fox Donna Marie Edmonds	(resigned 3 January 2022) (appointed 17 January 2022)
Auditors	Wescotts (SW) LLP 47 Boutport Street Barnstaple Devon EX31 1SQ	
Bankers	NatWest Bank plc 59 High Street Exeter Devon EX4 3DL	

Farms for City Children Limited

Report of the Trustees for the year ending 31 August 2022

The Trustees are pleased to present their Annual Trustees' Report together with the Financial Statements of the Charity for the year ending 31 August 2022. The Report and Financial Statements are prepared to meet the Directors' Report and Accounts requirements for Companies Act purposes.

The Financial Statements comply with the Charities Act 2011, the Companies Act 2006, the Memorandum and Articles of Association, and Accounting and Reporting by Charities: Statement of Recommended Practice applicable to charities preparing their accounts in accordance with the Financial Reporting Standard applicable in the UK and Republic of Ireland (FRS 102) (effective 1 January 2019).

Chair's Report

In September 2021 we were delighted to re-open the doors of our three farms – Nethercott House, Wick Court & Lower Treginnis - to our beneficiaries after eighteen months of closure due to the Covid-19 pandemic. Over the course of the year, we welcomed 2,753 young people from 74 schools and groups from urban areas across England and Wales, all of whom, without exception, had been negatively impacted by long-periods under national lockdown.

We are proud of the transformative impact that a week of "muck and magic" at one of our farms can bring to our beneficiaries. In today's world, the therapeutic value of our offer - a week of farming, healthy food and outdoor education - is needed more than ever. An immersive week on a farm, connected to nature and animals in a rural landscape has a significant role to play in advancing good mental health and wellbeing. Combined with nutritious food and teamwork, it is a positive experience for the children that they will never forget, and one which shapes and influences their lives for the better.

We started the year with a restructured staff team and a re-energised ambition to open our farms for more weeks outside of our traditional 32-week term-time offering. This shift in strategy is driven by our determination to reach even more beneficiaries and is a direct response to the perceived level of need post-pandemic, during which schools and groups working with children and young people had been prohibited in engaging with outdoor learning activities. Our new strategy is spearheaded by our new CEO Donna Marie Edmonds, who we were delighted to welcome at the start of 2022 to replace our former CEO, Vanessa Fox.

Operating for 120 weeks a year (across 3 farms) allows us to diversify beneficiary groups beyond the standard offer of mainstream schools. This strategy allows us to be even more inclusive, working with special educational needs (SEN) centres and groups, Virtual Schools, target groups within local authorities, young carers, military families, football associations, youth clubs, with health care trusts and many more. We now also welcome Gold Award applicants to use our farms for completion of their challenges thanks to a partnership with the Duke of Edinburgh Awards Scheme. Our pilot bookings during the year were an immense success and we are very excited by the prospect of serving the needs of these diverse beneficiary groups in 2022-23 as we fully roll out the strategy.

Farms for City Children Limited

Report of the Trustees for the year ending 31 August 2022

I would like to take this opportunity to applaud the entire team at Farms for City Children for their grit, agility and resilience in emerging from the most trying period in our 46-year history, with determination, creativity and optimism. We are united in our ambition to increase our reach in society, supporting the wellbeing of children and young people for decades to come.

Sadly, I must end this year's report with a moment of reflection. It is with great sadness that we share the news of the passing of our partner farmer at Nethercott House in Devon, David Ward. Since the inception of the charity in 1976, David Ward and his family have been ardent supporters and partners to Farms for City Children. David will be missed by all who knew him, by current and historic teams at Farms for City Children and by tens of thousands of beneficiaries educated and empowered through his memorable connection to their lives.

A handwritten signature in black ink, appearing to read 'R Goult', with a long horizontal line extending to the right.

Rachel Goult,
Chair of the Board of Trustees

Farms for City Children Limited

Report of the Trustees for the year ending 31 August 2022 (*continued*)

Our purposes and activities

Farms for City Children exists to remove the barriers that prevent children and young people from having meaningful access to the natural world. Our purpose, as set out in the governing document, is to “advance the education of boys and girls from urban areas by the establishment and maintenance of suitable educational study centres in the countryside of England and Wales”. Through our farming, food and nature-connected wellbeing offer, we strive to empower the next generation to experience the physical and mental health benefits of being in the countryside and to be the custodians of our landscape for generations to come.

Activities take place at our three working farms: Nethercott House in Devon, Lower Treginnis in Pembrokeshire, and Wick Court in Gloucestershire. Our activities are supported by partner farmers, whose commitment and dedication to the charity is fundamental for our success.

In setting our objectives and planning our activities for the year, the Trustees have considered the Charity Commission’s guidance on public benefit, including the guidance ‘public benefit: running a charity (PB2)’. The Trustees have always been proactive in ensuring that our activities are to the benefit of the public and children, and consequently have considered the guidance in all our activities and fee charging.

We have a moral responsibility to offer opportunities for young people to connect purposefully with the natural world. Barriers exist for children across all demographics, but a child is far less likely to have access to a rural experience if they are a young person identified as living in poverty, come from a minority ethnic group, or have a neuro-diverse profile.

If the countryside is to be cared for and protected, we must engage those living in all areas to see that they can have a relationship with all that it has to offer. As a charity, we are determined to keep fighting for this equity of access in order to obliterate the poverty of experience that is currently defining childhood for many millions of children living in the UK.

Farms for City Children Limited

Report of the Trustees for the year ending 31 August 2022 (continued)

Our purposes and activities (continued)



Impact of our offer

The sanctuary of our farms, and the healing, therapeutic offer of working in nature and with animals is well documented. Farms for City Children is the antidote to a world in which children have an over-reliance upon screens and digital relationships, which has led to a massive increase in social isolation, unregulated behaviour and disconnection from peers and teachers.

Beneficiaries learn to be mindful and notice their environment. They learn to take responsibility for themselves, each other, and work in harmony with the animals and the land. Free from digital intrusion, their analogue imaginations are liberated, and they enjoy creative activities, storytelling sessions by the fire pit (sometimes with our founder Sir Michael Morpurgo) and inventing and playing games together, interacting in a way that only children can – with total abandon!

Farms for City Children Limited

Report of the Trustees for the year ending 31 August 2022 (continued)

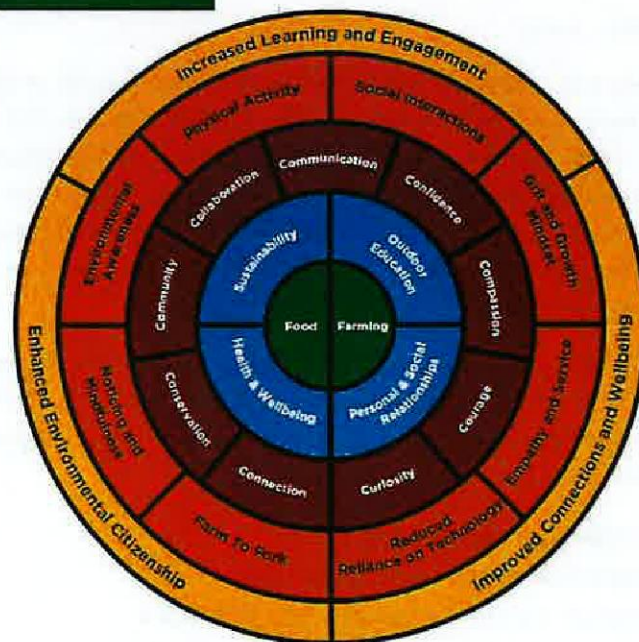
Our purposes and activities (continued)

Being on the farm gives each child or young person that space to just be. With reduced stress levels, increased freedom and more meaningful interactions and connections, beneficiaries return home with greater resilience and an enormous sense of pride as a result of being a “Farmer for a Week.”

The combined holistic offer of outdoor education activities with a strong focus on climate education and sustainability, plus the personal and social developments made through profound connections with classmates and accompanying adults, and the health and wellbeing benefits of an immersive week of physical activities, nutritious, locally produced and home-cooked food grown and prepared by the children themselves, results in a nurtured and empowered child, ready to return to school and home with new grit, growth mindset and a set of valuable transferable life skills.

Children and young people feel a momentous connection to nature, a sense of their own social and moral responsibility to be stewards of our planet, and an emerging feeling of agency in visualising a future for themselves that involves remaining in contact with the countryside and nature beyond the visit.

WHAT IS THE FARMS FOR CITY CHILDREN OFFER?



Farms for City Children Limited

Report of the Trustees for the year ending 31 August 2022 (continued)

Our purposes and activities (continued)

We know that our week empowers active citizenship in our beneficiaries. Alumni contact us to report that their relationship with nature has been sustained from their visit on the farm as a child into adulthood. We know that the impact of providing these experiences in schools means that we will give children and young people the agency to deal with the climate emergency and loss of biodiversity. We will be supporting them to 'grow up greener' and contribute to a sustainable future economy.

The impact on teachers is equally beneficial. Many teachers experience the week with the same wide-eyed wonder as their pupils, having also been denied access to the countryside in this way throughout their own lives. Teachers regularly feedback that the week stimulates bonds between the children and the adults that endure in the classroom upon return to school. They relish the opportunity to observe pupils liberated from the curriculum and the routines and rules of the school day. Others report significant changes to behaviour, emotional reactions and levels of confidence and engagement. Teachers tell us that children are more curious, courageous, and compassionate because of the week on the farm, and these character developments permeate the school and family setting when children return home.

What do children learn?

Days start early and, whilst the cycle of the seasons and vagaries of the weather ensure that each day is different, there is a reassuring routine and structure to life on the farm. A combination of physical farm tasks in tending to the animals and their welfare, maintaining the sites and checking stock is combined with sowing, harvesting, and cooking tasks that anchor the child to an understanding of the field > farm > fork journey. This improves children's food choices, increases their consumption of fresh, locally produced meat, fruit and vegetables which can help them develop longer term commitments to leading a healthier life.

A renewed focus on nature nurture is delivered through wellbeing activities to induce greater nature connectedness from long biodiversity walks, birdwatching on the coast and the riverbed, beekeeping sessions, sustainable arts and crafts and mindfulness sessions, storytelling, poetry, and astronomy. All of which enable us to fulfil our three pledges:

- To increase learning and engagement
- To improve connections and wellbeing
- To enhance a sense of environmental citizenship

Farms for City Children Limited

Report of the Trustees for the year ending 31 August 2022 (continued)

Our purposes and activities (continued)

In the short term, we know that children return happy and fulfilled, walking a little taller with knowledge, skills, and expertise that they did not have when they set off from home. They will never forget the memories they make, the relationships they cultivate or the way that they felt about themselves as they flourished through a week of “muck and magic” at Farms for City Children.

‘The most amazing thing I have experienced on the farm is feeding the animals and understanding what they eat and what their purpose is but the most amazing thing has been the tractor to Bridgetown because you get views you don’t get in England.’ Visitor to Nethercott House

‘I’ve loved all of it. It was very fun and generally enjoyed doing all jobs, even the poop and especially holding the hen but I enjoyed all the same. One of the best experiences I will ever have. Ps: the people made it even better.’ Visitor to Nethercott House

‘Many children overcame fears of wildlife and trying new foods. Child x became more focused and talkative. They became happier and their manners improved. Child y who has ASD became noticeably better at working with peers and regulating their emotions.’ Teacher

‘A rewarding and unforgettable experience that challenged our children to grow and develop in confidence and empathy with an environment that was new to them all. Thank you to the incredible staff who made us feel so welcome and cared for.’ Teacher

‘Wow! What a fantastic experience for all, much learning and understanding of the rural community and how farms work, also the understanding of how the farm grows/produces the food that is used on the events held at Nethercott House.’ Teacher

‘Getting to play with sheep was good. The food was delicious. Getting to learn how the animals live and work. I liked grooming the horses and sheep. I loved the peacefulness of the birdwatching and learning about the animals. Playing ping pong was great and I’ve practised and got better. I loved Ore.’ Visitor to Wick Court

Farms for City Children Limited

Report of the Trustees for the year ending 31 August 2022 (continued)

Achievements and performance

Our new team and our new strategy

After two very traumatic years during the Covid19 pandemic, which saw our farms close, we emerged determined in September 2021 to reopen all farms to children across the UK, with a restructured staff team and a re-energised ambition to open the sites for bookings for 40 weeks of the year. CEO Vanessa Fox stepped down at the start of 2022 and following a robust recruitment process, we were delighted to welcome Donna Marie Edmonds as our new CEO.

This shift in strategy was a direct response to the perceived level of need post-pandemic where schools and groups working with children and young people across the country had been prohibited in engaging with outdoor learning activities since early 2020. The charity believes that by operating for more weeks a year, we can invite a greater number of beneficiaries to the farms in term time and now out of school hours.

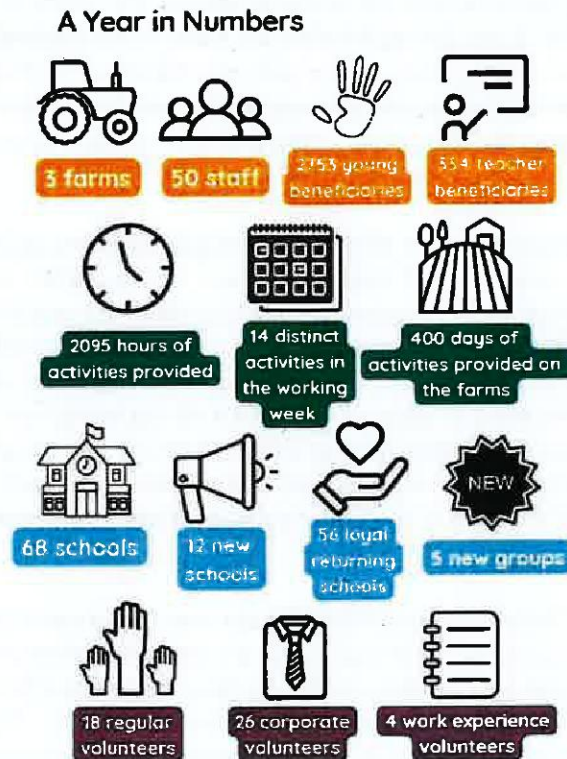
This enables us to increase its reach in society as an agency supporting the wellbeing of children and young people. Operating for 120 weeks a year (across 3 farms) allows us to diversify beneficiary groups beyond the standard offer of maintained schools. This strategy allows us to be even more inclusive, working with special educational needs (SEN) specialist centres and groups, children in the care system with Virtual Schools, target groups within local authorities, young carers, military families, football associations, youth clubs, and with health care trusts.

It also allows us to extend the age group that we can work with up to 19, and we have actively sought partnerships with community groups that can bring us an older demographic. The new strategy has inducted a partnership with the Duke of Edinburgh Award Scheme, and we now welcome Gold Award applicants to use our farms for completion of their challenges. Our pilot bookings have been an immense success and we are excited about how the charity can serve the needs of these diverse beneficiary groups in 2022-23 as we fully roll out the strategy.

Farms for City Children Limited

Report of the Trustees for the year ending 31 August 2022 (continued)

Achievements and performance (continued)



We are delighted to have been able to deliver over 2,000 hours of activities across the three farms to almost 3,000 young people and 350 teachers. Welcoming loyal schools back and adding 12 new schools to our beneficiaries, and also 5 new groups in non-term weeks demonstrates the appetite for our offer. Our volunteers continue to support our work both on site devoting regular time to the charity, and also from work experience and corporate support.

Farms for City Children Limited

Report of the Trustees for the year ending 31 August 2022 (continued)

Achievements and performance (continued)

Nethercott House

Autumn

Autumn at Nethercott House was an abundance of harvesting sessions with the children delivering volumes of produce to sell at our food stall in Hatherleigh. Apple picking, juice making, and three new cooking sessions added by our Kitchen Manager increased the field > fork understanding of where food comes from. While our volunteer Pat Brown developed the apiary to prepare Nethercott House to commence beekeeping in the Spring, biodiversity walks into Iddesleigh and night walks to learn about bats and discuss astronomy were popular with the children. Hundreds of trees were planted on the banks of the river Torridge by the children maximising a mass donation from The Woodland Trust and we launched a renewed breeding programme with our rare/at risk Large Black pigs.

Spring

With the impact of the Omicron variant threatening provision delivery again, Nethercott House forged forwards with clearing, weeding, and applying manure to the garden beds in the walled garden, developing volumes of produce in the greenhouse and polytunnels and offering tea infusion sessions to explore the wellbeing benefits of botanicals grown in the garden. Storm Eunice in February caused significant damage to infrastructure, but work continued with incubating eggs from our purebred Buff Orpingtons and hybrid Marans – to create a beautiful dark egg laying hen, multiple new litters of our Large Black pigs being born and bottle rearing orphaned lambs from neighbouring farms. A Wassail of the orchards with visiting school children was complemented by two media events with a crew filming an episode of BBC's Escape to the Country and a photo shoot from HELLO! Magazine.

Summer

In the season of births, visiting children witnessed our first caesarean birth of a calf at Bridgetown – amazing highlights! The produce harvested in the autumn was defrosted and turned into delicious recipes by the children and new produce in the gardens yielded cauliflowers, new potatoes, spring cabbage, onions, leeks, lettuces, strawberries, and other soft fruits. Surplus rhubarb was picked, cleaned, tied, tagged, and sold on the food stall in Hatherleigh by the children and jam making sessions were a hit! Produce from the garden is now sold in our shop for the children to take cuttings home and continue their growing journeys back in the city. Most exciting to report is that the children have enjoyed their first beekeeping sessions at Nethercott – a real asset in discussing the vital role these pollinators play in the entire ecological chain of being and a transferable educational experience to build on back in the school classroom.

Lower Treginnis

Autumn

Lower Treginnis re-opened in the autumn with the challenge of harvesting huge volumes of produce. The children sell the food as part of the Open Food Network in our Farm Shop, learning how to prepare, weigh, measure, and price the items and complete transactions with customers. Fantastic work experience! Building up livestock numbers again with a new breeding programme across all stock was a priority after such a long period of closure, and it was a delight to consume meat and fruit and vegetables produced on the farm – the first for a long time. Tending to a new milking goat and completing maintenance to the incubation rooms to allow more handling of chicks was enjoyed by the children in addition to the offer of working with pigs, donkeys, and poultry. Coastal walks and watching the seal pups delighted the beneficiaries as did learning about the puffins on Ramsey Island. New telescopes donated to the farm allowed for evening astronomy sessions which were a hit.

Farms for City Children Limited

Report of the Trustees for the year ending 31 August 2022 (continued)

Achievements and performance (continued)

Spring

With Omicron variants tearing through schools, particularly in Wales, causing cancellation and anxiety, the farm moved to day visits with local youth groups to ensure the offer could still be enjoyed by children even in these challenging circumstances. Sessions were taken into local Pembrokeshire schools when children could not visit – e.g. a Key Stage 1 session identifying vegetables, labelling and boxing eggs for the shop, planting sweet peas and broad beans, showed how Lower Treginnis could pivot their offer to remain operational. New groups in the form of a BTEC agriculture group visited with 14-18-year olds allowing work to be completed linked to their studies and the Marlowe's Group (children living in the care system) came for cooking sessions in the kitchen and sustainable artwork sessions on coastal walks. February brought Storm Eunice and it battered the Lower Treginnis farm. Children were involved in all kinds of repairs and a major tree planting initiative with 500 trees donated by The Woodland Trust being planted. Incubation successes enabled the farm to have point of lay birds to sell and we welcomed 3,000 new lambs born this spring for the children to witness at every visit throughout the season.

Summer

The impact of abattoirs not taking pigs for culling in our area means we had to give away some of our pigs. This provided powerful narrative for the children around food wastage and sustainability of the food production industry. The birds were liberated from "flockdown" caused by avian flu and the farms became free range again. The clearing of the polytunnel, compost barrowing and planting tomatoes and strawberries and other soft fruits for the kitchen provided some wonderful horticulture sessions and a wildflower session was a huge success with children picking and arranging the flowers. A new enrichment session was launched by our SEMH (social, emotional, and mental health) specialist in response to the growing needs of our beneficiaries to have nature nurture wellbeing activities on the farm. Finally, new groups arrived at Lower Treginnis during the summer vacation for the first time ever including "Fourteen", a group from East London Mosque and Birmingham Health Trust and Birmingham Football Club brought a group of vulnerable young people with complex needs supported by their outreach programme.

Wick Court

Autumn

Our year at Wick Court started with a complete overhaul of the garden following two years of it being unattended. With seeds from the other farms, the children started the hard work of bringing the garden back to life. New horse grooming sessions with two new ponies donated to the farm proved a hit as did the pig weighing sessions which offer opportunities to discuss the economics of pig keeping in an industry under threat. A loaned Gloucester Bull was brought in to increase rare heritage breed stock and resulted in conversations around rare breeds with the children. The children moved all the birds inside and secured new spaces to prepare for "flockdown" and the threat of avian flu. An introduction to "Wellbeing Wednesday" with sessions of birdwatching, biodiversity walks, willow weaving and mindfulness activities in nature added a new dimension to our food and farming offer.

Farms for City Children Limited

Report of the Trustees for the year ending 31 August 2022 (continued)

Achievements and performance (continued)

Spring

New seasonal tasks were on offer for the children including willow coppicing and weaving, oak planting, fire lighting, kindling collecting and wood chip path maintenance. A new polytunnel was delivered for the garden, fences were repaired, beds dug, and a new greenhouse erected to rejuvenate the garden neglected throughout the pandemic closure. Lamb halter training proved to be a hugely popular activity and the horse grooming sessions became more of a therapeutic wellbeing task in our holistic programme and less a physical “farm task” because of the impact the equine nurture has on beneficiaries. A new boar was purchased, and Wick Court successfully produced halal lamb and beef for Nethercott House and Lower Treginnis and welcomed an Imam from Gloucester Mosque, supporting the charity with further adapting the offer for Muslim beneficiaries. Insect walks to explore biodiversity, owl and bat watching sessions and the beekeeping sessions were fully opened with our volunteers Pat and Ted.

Summer

The garden flourished at Wick Court thanks to the energy of our staff and team of volunteers, and it offered a bounty of cauliflower, leeks, courgettes, tomatoes, potatoes, grapes, and berries, with enough produce for the children to set up a food stall for the local community as part of the Open Food Network. Cooking sessions continued to utilise all produce from the garden and some interesting new recipes emerged – nettle spanakopita and new salad dressings were developed by the children experimenting with flavours. Sadly, Mr Morgan, our pony passed away again prompting educational discussions around the cycle of life. Repair work is always ongoing on a heritage farm and house, and the moat, front door, leaded windows, and the pole barn damaged in Storm Eunice all received attention. Open Farm Sunday – the first open event for the charity in over 2 years – saw almost 400 visitors coming back to see our work and on 6th July we welcomed our Patron HRH Princess Royal for a visit to Wick Court. The summer season saw group bookings in the holidays coming to Wick Court for the first time.

Farms for City Children Limited

Report of the Trustees for the year ending 31 August 2022 (continued)

Achievements and performance (continued)

Fundraising

Our fundraising efforts aim to subsidise every child's visit to Farms for City Children to ensure that it is affordable. The level of support that we have received from our supporters, donors and grant makers has once again been fantastic – thank you to you all for your support no matter how large or small your contribution.

This financial year, perhaps more than ever before, we operated in a new and complex fundraising environment, complicated by cost-of-living challenges and the Russian invasion of Ukraine that have had an immediate impact on the focus of donations and support. As a result, competition for fundraised income across all forms of fundraising has become fierce with funders and donors receiving far more requests than in recent history, placing significant pressure on the funds available to the charitable sector.

We operate across several forms of fundraising, the focus areas being Trusts and Foundations, Individual Giving, Legacy, and Corporate partnerships, all of which are managed by employed fundraising staff who are developed and overseen by the Senior Leadership Team. The team worked hard during the year to deliver despite the challenging environment and we were successful in raising over £1m of income in the financial year. Towards the year end we recruited to the new post of Grants Development Manager in order to build on our work with trusts and foundations. The continued support for child subsidies, from many small to medium grant makers stewarded by our Trusts Officer, bolstered our year end results and we must thank the large numbers of smaller grant makers that underpin our programme each year. In addition, we received significant multi-year grants from the Aurora Trust (formerly the Ashden Trust) and the Corton Hill Trust and were welcomed into the Ernest Cook Trust OWL Collaboration.

Our Individual Giving programme had mixed results despite significant contributions by our founders Sir Michael and Lady Morpurgo and our Vice President Joanna Lumley, and as always, a heartfelt thank you to them for their continued support and encouragement. The Christmas Big Give campaign delivered some fantastic results but sadly these were not sustained.

Despite these lower than projected outcomes we should note that our Corporate Partnerships programme exceeded target with specific highlights in the work that we undertook with the Bank of Montreal and the toy manufacturers Britain's Farm Toys, owned by Tomy. In both cases our partners supported us with both engagement activities and donations. They reflect the types of partnerships that we hope to build in the longer term, and we would like to offer special thanks to both organisations. In addition, we would also like to highlight the thousands of Tesco customers who voted for us with their post-shopping blue tokens that delivered valuable funds.

Farms for City Children Limited

Report of the Trustees for the year ending 31 August 2022 (continued)

Achievements and performance (continued)

We were delighted to develop a three-year funding partnership with the Worshipful Company of Butchers; Farms for City Children was the recipient of generous funds raised at their charity ball. We have high hopes of this relationship in the coming years and look forward to developing a lasting programme of activities that leave a significant legacy of our work together.

In addition, our legacy programme delivered an amazing result, exceeding target by 228% and we would like to recognise those individuals that left us valuable gifts in their wills which is such an important part of our income each year.

Our events and community fundraising programme was much reduced due to the pandemic and we have an ambition to grow this in the next twelve months.

Farms for City Children is proud to be registered with the Fundraising Regulator and applies the principles in the Fundraising Code of Practice. Due to the nature of our work safeguarding is a key aspect in everything that we do, and we make sure that we consider vulnerable people when undertaking fundraising to ensure that they are considered and protected in all that we do. We do not share or sell donors data. We work closely with commercial partners to ensure that they operate to our expected standards. We do not employ third party fundraisers to operate on our behalf.

In the financial year we received no complaints relating to our fundraising activities.

Farms for City Children Limited

Report of the Trustees for the year ending 31 August 2022 (continued)

Financial review

Farms for City Children had an overall surplus of £305,694 in 2021-22 (2021: £95,298), thereby increasing total reserves to £3,823,822 (2021: £3,518,128). We re-opened the farms in September 2021 and 2021-22 was the first full year of operation post Covid-19 pandemic. The effects of the pandemic were still very much in evidence in the Autumn term; bookings were below expectations as schools and parents remained cautious about booking residential trips. Although not as high as income levels pre pandemic, we generated income of £815,671 (2021: £nil) from residential trips and £4,000 (2021: £10,030) from day trips in the year; these figures include visits from five non-school groups as part of our new strategy to widen our beneficiary reach and welcome children to the farm outside term time.

We typically raise approximately 50% of our income through grants, donations, and legacies, which subsidise the cost of a week at the farm to make it as affordable as possible for all children. Our objective is to increase this figure going forward. The fundraising landscape remains challenging; community activities and other fundraising events were slow to return to pre pandemic levels during the year. We are, however, pleased to report an increase in income from donations and legacies to £547,499 (2021: £447,691) as well as an increase in income from revenue grants to £494,412 (2021: £249,251). We are grateful to all our funders who have enabled us to re-open our doors after a very difficult 18 months.

At the start of the year, we recruited new staff teams for the three farms; staff have been recruited on full time, permanent contracts to reflect our new strategy of operating all year round. We have also strengthened our head office function with new roles in sales, marketing and fundraising to support the new strategy, bringing our head count to 48 (2021: 22).

Premises and other operating costs increased as we re-opened the farms. We have invested in sales and marketing to enable us to reach new beneficiaries and increase the number of children visiting the farms each year and this can be seen in the increase in general office costs. Following the pandemic, head office staff are continuing to work under a hybrid model (part office and part home working) and we took the opportunity to review our tenancy at Huxham Barns, returning part of the offices back to the landlord and reducing our costs for the remainder of the lease.

Last year we took the difficult decision to sell a portion of land at Wick Court; this sale was realised in January 2022 with a net gain of £535,597. The proceeds of the sale enabled the repayment of the Coronavirus Business Interruption Loan (CBIL) at the end of January 2022. Following the sale of land, the Farming Business Tenancy with the Oldbury Partnership at Wick Court came to an end, although we continue to work with Oldbury Partnership as our neighbours and partner farmers.

We have continued to invest in the restoration and maintenance of our farm buildings. Works continued in the year to refurbish the bathrooms at all three farms with funding from the Band Trust and we purchased a new greenhouse and garden tractor at Wick Court with the help of a grant from the Halpin Trust. Storm Eunice caused major damage at two of our farms and we received insurance monies for repairs and replacement of equipment. We are also grateful to all our supporters who responded to the emergency appeal for funds to replace the chicken shed blown away by the storm at Lower Treginnis.

Farms for City Children Limited

Report of the Trustees for the year ending 31 August 2022 (continued)

Financial review (continued)

Investment powers and policy

The Trustees, having regard to the liquidity requirements of running Farms for City Children, have kept available funds in an interest-bearing deposit account and seek to achieve a rate on deposit which matches or exceeds inflation as measured by the retail prices index.

Reserves policy

At 31 August 2022, the free reserves of the charity (unrestricted reserves less unrestricted fixed assets) stood at £748,167 (2021: £355,587). This represents 3 months' operating costs.

In the long term, the Trustees believe that excessive levels of free reserves (see Note 22) are unjustified. However, considering the financial challenges presented by the Covid-19 pandemic, the Trustees made a commitment to grow free reserves over a 5-year period to be equivalent to 6 months' operating costs. This will ensure the Charity can better meet the needs of its beneficiaries during periods of economic uncertainty and be resilient in the face of external shocks.

Going concern

We have now completed a full year of operation under our new year-round model. We are delighted to report an increase in schools who have booked to return in 2022-23, and we have also forged relationships with new schools and groups who will be visiting a farm for the first time, thus increasing our beneficiary reach. Many schools have also made a booking for 2023-24.

The cost-of-living crisis has adversely impacted our beneficiaries; schools are grappling with enormous energy bills and other rising costs and enrichment visits are not at the top of school agendas. We are maintaining close contact with schools to offer financial help where possible to enable the children who most need a week in wellies to visit a farm.

We produce rolling forecasts to assess the impact of the current economic situation on our finances. We have delayed some capital expenditure and scaled back some operational expenditure in order to allocate funding to increases in energy bills and other essentials. We are currently reviewing our plans for income generation.

We continue to seek new funding partners who support the diverse threads of our offer and have been successful at increasing funds to support our core work in 2022-23. We have strengthened the fundraising team, with an emphasis on grants from larger trusts and foundations, and we plan to further invest in fundraising in the coming year.

Farms for City Children Limited

Report of the Trustees for the year ending 31 August 2022 (continued)

Financial review (continued)

Over the next twelve months we expect reserves to increase slightly and have long term budgets in place to ensure that reserves increase to six month's operating costs over the next 5 years. The Trustees therefore believe it is appropriate to prepare the Financial Statements on the going concern basis.

Plans for future periods

With an ambitious new Business Plan launching to welcome even more beneficiaries and open for even more weeks of the year, Farms for City Children is committed to the next chapter in our constantly evolving story. The significant development of partnerships in the last year have allowed us to take a seat at the table of several national working parties and strategy groups around food, farming, wellbeing, and children's health initiatives, and on campaigns to secure funding in schools for outdoor learning and nature connected activities.

Ensuring that our brand is communicated effectively has resulted in an increase in media activity this year with plans to deliver more webinars, podcasts and to take an active role in keynote speaking and workshop delivery at conferences. A refreshed visual identity is on the horizon, as is an announcement about new Ambassadors and Patrons to advocate for the interest of the charity, ensuring that our staffing, governance, and patronage better reflect the diversity of our beneficiary groups. This brings with it wonderful opportunities for commercial growth on our three farms, ensuring that the assets of the farms can be utilised to serve more beneficiary groups and secure the financial future of the organisation.

Collaborations with new funders will allow the charity to be a key player in national outdoor learning strategy work and we are excited to be part of the OWL collaboration with the Ernest Cook Trust, to name just one of the exciting new initiatives launching in September 2022. Developing land at our Nethercott site in Devon, to have a more sustainable and regenerative offer with a strong focus on biodiversity and agroforestry, reveals huge potential for diversification of our offer and for more partnerships with colleagues working across climate education and sustainability.

As we continue to welcome groups supported by third sector community-based organisations, we know that 2022-23 will be the year where our reach extends far beyond relationships with schools. Measuring the impact of this work with a MRes student from Harper Adams University, funded by the Worshipful Company of Butchers, will deliver a compelling piece of evidence about the impact of our offer on children, young people, and their accompanying adults across all three farms. We will also be working with Statisticians for Society to measure the impact of our work.

Our Estates Management plan details the ongoing maintenance and investment required to keep the three farms in a good state of repair. In 2022-23 we will take back land and buildings at Burrow Farm, adjacent to Nethercott House, following the end of a longstanding tenancy arrangement. Minor works to the buildings are planned to bring these back into our own use and a sustainable land management plan will be produced. At Lower Treginnis several timber windows and doors are being replaced. At Wick Court we have several small-scale repairs to the historic fabric of the buildings planned.

Farms for City Children Limited

Report of the Trustees for the year ending 31 August 2022 (continued)

Structure, Governance and Management

Governing Document

Farms for City Children Limited, is a registered charity (No 325120) and a company (No 01177239) limited by guarantee. The governing document of Farms for City Children Limited is its Articles of Association dated 13th July 2021. The company was incorporated on 12 July 1974 and registered as a charity on 6 November 1974. The Trustees of the Charitable Company guarantee to contribute an amount not exceeding £1 to the assets of the Charity in the event of winding up.

Appointment, induction, and training of trustees

Trustees are recruited for their expertise, experience, and skills in a variety of relevant fields. All Trustees undertake a skills audit, and any gaps in skills are proactively considered in recruiting new Trustees. Prospective Trustees are interviewed by a nominations committee made up of the Chair of the Board and two other Trustees. Their appointment is dependent on a unanimous election by the Board. New Trustees are provided with an induction pack of reading material and an induction plan to assist them in familiarising themselves with the work, value, and ethos of the Charity. Trustees are encouraged to visit all three of the farms, and to attend any relevant events alongside their attendance at quarterly meetings. Board wide training is arranged as required. Trustees serve a 3-year term and are eligible for two further 3-year terms up to a maximum of 9 years. As Founders, Sir Michael and Lady Morpurgo are not subject to a maximum term of office as Trustees. Four trustees stepped down in 2022 – Mel Squires, Laura Reynolds, Peter Pantlin and Justin Albert – and we thank them for their service to the charity. We are in the process of recruiting new trustees to the board.

The Trustee Board use the Charity Governance Code as the basis for the development of the Charity's governance structures and ongoing monitoring of its governance systems and processes. The Board of Trustees undergo regular training and professional development to ensure they remain abreast of current developments, changes in statutes and best practice.

Organisation

The Trustees determine the strategic direction of the Charity and delegate responsibility for the day-to-day management and operation to the Chief Executive and Senior Leadership Team, consisting of the Head of Fundraising, Head of Operations, Head of Sales & Marketing and Head of Finance & Resources, with support from the Senior Management Team consisting of the Finance Manager, Farm School Managers and Farm Operations Managers.

The Trustees ensure the accuracy and timeliness of all financial reporting information through the Finance & Resources Committee, which reviews all financial information and progress on income generation and fundraising strategies. The Finance & Resources Committee, which meets on a quarterly basis, develops, and monitors the Charity's Financial Procedures and Risk Register. In addition, it reviews operational risks in relation to employment issues as well as keeping abreast of changes in employment law and developing relevant policies. The Finance & Resources Committee also reviews the Health & Safety Policy prior to consideration and approval by the full Board.

Farms for City Children Limited

Report of the Trustees for the year ending 31 August 2022 (continued)

Structure, Governance and Management (continued)

The Board routinely meets on a quarterly basis to review the Charity's performance, consider the financial reports and reports from the Senior Leadership Team and Senior Management Team, and to decide other matters of governance and policy, as advised by the Chief Executive.

There are four sites: three farms – Nethercott House, Lower Treginnis and Wick Court – and Head Office at Huxham Barns. The Senior Leadership Team are based at Huxham Barns near Exeter, with Head Office providing a central legal, IT, finance, and human resources function across the Charity, as well as leading on Charity-wide policy including Health & Safety, overseeing large capital projects, and providing the fundraising and marketing function. There is a hybrid working model in place for the Head Office team that meets the needs of the Charity and the employees. Each farm is managed by the Farm School Manager with the support of a Farm Operations Manager and a team of staff who provide the activities for the children, manage the accommodation and care for the livestock.

Related parties and co-operation with other organisations

None of our Trustees receive remuneration or other benefit from their work as Trustees with the Charity. Related party relationships are monitored, and a Trustees' Register of Interests maintained and checked annually. Any updates to the Register of Interests or potential conflicts due to the items shown on the agenda are recorded at the start of every Board meeting

Pay policy for senior staff

The Directors, who are the Charity's Trustees, consider themselves, the Senior Leadership Team and the Farm School Managers to be the key management personnel in charge of directing and controlling, running and operating the Charity on a day-to-day basis. All Directors give of their time freely and no Director received remuneration for being a Director/Trustee in the year. Details of related party transactions are disclosed in note 14 to the accounts.

The Finance & Resources Committee meet in the Spring to review all salaries, including those of the Chief Executive and Senior Leadership Team. In their decisions they are informed by the recommendations of the Chief Executive (except in the case of their own salary) and by the Charity's pay policy and scales, which are benchmarked and reviewed every three years.

Farms for City Children Limited

Report of the Trustees for the year ending 31 August 2022 (continued)

Structure, Governance and Management (continued)

Risk management

The Trustees review the objectives, services, management, and funding of the organisation as part of an ongoing planning and review process. The Finance & Resources Committee reviews the risk process, reviewing the Risk Register quarterly. There are also routes for any additional areas of concern highlighted through routine reports or arising through changes in external circumstances, new activities, or changes in the law. The risk is assessed, and any further action is identified, and parameters are agreed. The Senior Leadership Team assesses day to day risks using the Risk Register as a management tool to ensure the constant mitigation of potential risks.

The Trustees have reviewed the major risks that could impact on Farms for City Children. These are:

Risk	Mitigation
Financial: The charity relies heavily on two primary sources of income: payments from visiting school groups, and charitable donations.	Board focus, diversification of income including commercial lettings, increased number of operating weeks and diversification of beneficiary groups.
Cost of Living Crisis: Parents and schools may be unable to afford a residential visit.	Exploring ways of offering more Access Funds to reduce the cost of a farm visit for the children most in need.
Inflation: Utilities, food and other costs are impacted by the high inflation rate.	Board focus, regular reforecasts, and review of costs, putting on hold any non-essential expenditure.
Health and Safety: There are considerable health & safety risks associated with farming and with children working in a farm environment.	Continuing good practice in terms of children working on a farm, work with health & safety advisers NFU, who audit our practice annually, provide annual action plans and provide an on-call service.
Child protection and safeguarding: There are inherent child protection and safeguarding risks in any residential setting.	Every school group is accompanied by at least 4 members of staff from their own school who remain in loco parentis throughout the day, all staff have an up-to-date DBS check, participate in safeguarding training to the appropriate level and are regularly made aware of the Charity's child protection and safeguarding policy, including the disclosure procedure. The Safeguarding and Child Protection Policy remains under annual review and is updated as necessary.

Farms for City Children Limited

Report of the Trustees for the year ending 31 August 2022 (continued)

Trustees' responsibilities in relation to the Financial Statements

The Trustees (who are also the Directors of the Farms for City Children Limited for the purposes of company law) are responsible for preparing a Trustees' Annual Report and financial statements in accordance with applicable law and United Kingdom Accounting Standards (United Kingdom Generally Accepted Accounting Practice).

Company law requires the Trustees to prepare Financial Statements for each year that give a true and fair view of the state of affairs of the Charity and of the incoming resources and application of resources, including the income and expenditure for that period. In preparing the Financial Statements, the Trustees are required to:

- select suitable accounting policies and then apply them consistently;
- observe the methods and principles in the Charities SORP;
- make judgements and estimates that are reasonable and prudent;
- state whether applicable UK accounting standards have been followed, subject to any material departures disclosed and explained in the financial statements;
- prepare the Financial Statements on the going concern basis unless it is inappropriate to presume that Farms for City Children will continue in business.


The Trustees are responsible for keeping proper accounting records that disclose with reasonable accuracy at any time the financial position of Farms for City Children and to enable them to ensure that the Financial Statements comply with the Companies Act 2006. They are also responsible for safeguarding the assets of Farms for City Children and hence taking reasonable steps for the prevention and detection of fraud and other irregularities.

The Trustees are responsible for the maintenance and integrity of the corporate and financial information included on Farms for City Children's website. Legislation in the United Kingdom governing the preparation and dissemination of Financial Statements may differ from legislation in other jurisdictions.

Statement as to disclosure to our auditors

In so far as the Trustees are aware at the time of approving our Trustees' Annual Report:

- there is no relevant information, being information needed by the auditor in connection with preparing their report, of which Farms for City Children's auditor is unaware, and
- the Trustees, having made enquiries of fellow Trustees and Farms for City Children's auditor that they ought to have individually taken, have each taken all steps that he/she is obliged to take as a Trustee in order to make themselves aware of any relevant audit information and to establish that the auditor is aware of that information.



By order of the Board of Trustees
Rachel Goult (Chair)

2 February 2023

Farms for City Children Limited

Independent Auditor's report to the Members of Farms for City Children Limited for the Year Ended 31 August 2022

Opinion

We have audited the Financial Statements of "the charitable company", Farms for City Children Limited, for the year ended 31 August 2022, which comprise the Statement of Financial Activities (including the Income and Expenditure Account), the Balance Sheet, the Cash Flow Statement and the related notes. The financial reporting framework that has been applied in their preparation is applicable law and United Kingdom Accounting Standards, including FRS 102 "The Financial Reporting Standard applicable in the UK and Republic of Ireland" (United Kingdom Generally Accepted Accounting Practice).

In our opinion, the financial statements:

- give a true and fair view of the state of the charitable company's affairs as at 31 August 2022 and of its incoming resources and application of resources profit for the year then ended;
- have been properly prepared in accordance with United Kingdom Generally Accepted Accounting Practice; and
- have been prepared in accordance with the requirements of the Companies Act 2006.

Basis for opinion

We conducted our audit in accordance with International Standards on auditing (UK) (ISAs (UK)) and applicable law. Our responsibilities under those standards are further described in the Auditor's responsibilities for the audit of the financial statements section of our report. We are independent of the charitable company in accordance with the ethical requirements that are relevant to our audit of the financial statements in the UK, including the FRC's Ethical Standard, and we have fulfilled our other ethical responsibilities in accordance with these requirements. We believe that the audit evidence we have obtained is sufficient and appropriate to provide a basis for our opinion.

Conclusions relating to going concern

In auditing the financial statements, we have concluded that the Trustees' use of the going concern basis of accounting in the preparation of the Financial Statements is appropriate.

Based on the work we have performed, we have not identified any material uncertainties relating to events or conditions that, individually or collectively, may cast significant doubt on the Charity's ability to continue as a going concern for a period of at least twelve months from when the original Financial Statements were authorised for issue.

Our responsibilities and the responsibilities of the Trustees with respect to going concern are described in the relevant sections of this report.

Farms for City Children Limited

Independent Auditor's report to the Members of Farms for City Children Limited for the Year Ended 31 August 2022 (continued)

Other information

The other information comprises the information included in the annual report, other than the Financial Statements and our auditor's report thereon. The Trustees (who are also the Directors of the charitable company for the purposes of company law) are responsible for the other information. Our opinion on the Financial Statements does not cover the other information and, except to the extent otherwise explicitly stated in our report, we do not express any form of assurance conclusion thereon.

In connection with our audit of the Financial Statements our responsibility is to read the other information and, in doing so, consider whether the other information is materially inconsistent with the Financial Statements or our knowledge obtained in the audit or otherwise appears to be materially misstated. If we identify such material inconsistencies or apparent material misstatements, we are required to determine whether there is a material misstatement in the Financial Statements or a material misstatement of the other information. If, based on the work we have performed, we conclude that there is a material misstatement of this other information, we are required to report that fact.

We have nothing to report in this regard.

Opinions on other matter prescribed by the Companies Act 2006

In our opinion, based on the work undertaken in the course of the audit:

- the information given in the Trustees' report, which includes the Directors' report and the strategic report prepared for the purposes of company law, for the financial year for which the Financial Statements are prepared is consistent with the Financial Statements; and
- the strategic report and the Directors' report included within the Trustees' report have been prepared in accordance with applicable legal requirements.

Matters on which we are required to report by exception

In the light of the knowledge and understanding of the charitable company and its environment obtained in the course of the audit, we have not identified material misstatements in the strategic report or the Directors' report included within the Trustees' report.

We have nothing to report to you in respect of the following matters in relation to which Companies Act 2006 requires us to report to you if, in our opinion:

- adequate accounting records have not been kept, or returns adequate for our audit have not been received from branches not visited by us; or
- the Financial Statements are not in agreement with the accounting records and returns; or
- certain disclosures of Trustees' remuneration specified by law are not made; or
- we have not received all the information and explanations we require for our audit.

Farms for City Children Limited

Independent Auditor's report to the Members of Farms for City Children Limited for the Year Ended 31 August 2022 (continued)

Responsibilities of trustees

As explained more fully in the Trustees' Responsibilities Statement set out on page 17, the Trustees (who are also the Directors of the charitable company for the purposes of company law) are responsible for the preparation of the Financial Statements and for being satisfied that they give a true and fair view, and for such internal control as the Trustees determine is necessary to enable the preparation of Financial Statements that are free from material misstatement, whether due to fraud or error.

In preparing the Financial Statements, the Trustees are responsible for assessing the charitable company's ability to continue as a going concern, disclosing, as applicable, matters related to going concern and using the going concern basis of accounting unless the Trustees either intend to liquidate the charitable company or to cease operations, or have no realistic alternative but to do so.

Auditor's responsibilities for the audit of the Financial Statements

Our objectives are to obtain reasonable assurance about whether the Financial Statements as a whole are free from material misstatement, whether due to fraud or error, and to issue an auditor's report that includes our opinion. Reasonable assurance is a high level of assurance, but is not a guarantee that an audit conducted in accordance with ISAs (UK) will always detect a material misstatement when it exists. Misstatements can arise from fraud or error and are considered material if, individually or in the aggregate, they could reasonably be expected to influence the economic decisions of users taken on the basis of these financial statements.

Irregularities, including fraud, are instances of non-compliance with laws and regulations. We design procedures in line with our responsibilities, outlined above, to detect material misstatements in respect of irregularities, including fraud. The extent to which our procedures are capable of detecting irregularities, including fraud is detailed below:

As part of our audit planning we obtained an understanding of the legal and regulatory framework that is applicable to the charity and the sector in which it operates. The key laws and regulations we identified were charity legislation and regulations in relation to health and safety (RIDDOR) and data protection (GDPR).

We also considered those laws and regulations that have a direct impact on the preparation of the financial statements, primarily the Companies Act 2006.

We discussed with management how compliance with these laws and regulations is monitored and discussed policies and procedures in place. We also identified the individuals who have responsibility for ensuring that the charity complies with laws and regulations and deals with reporting any issues if they arise.

Based on this understanding we designed our audit procedures to identify non-compliance with such laws and regulations. Our procedures involved the following: -

- Enquiries of management and those charged with governance regarding their knowledge of any non-compliance with laws and regulations that could affect the financial statements;

Farms for City Children Limited

Independent Auditor's report to the Members of Farms for City Children Limited for the Year Ended 31 August 2022 (continued)

Auditor's responsibilities for the audit of the Financial Statements (continued)

- Review of any health and safety incidents which have been reported under The Reporting of Injuries, Diseases and Dangerous Occurrences Regulations 2013 ("RIDDOR") during the period;
- Review of the charitable company and group's controls in relation to GDPR, Safeguarding and Environmental Stewardship and enquiries to Senior Management as to the occurrence and outcome of any reportable breaches;
- Reviewing legal and professional costs to identify any possible non-compliance or legal costs in respect of non compliance;
- Reviewing Trustees' meeting minutes;

As part of our enquiries, we discussed with management whether there have been any known instances, allegations or suspicions of fraud.

We evaluated the risk of fraud through management override including that arising from management incentives. The key risks we identified were management bias in accounting judgements and estimates. We also evaluated the risk of fraud through misappropriation of income or misapplication of grant funding.

In response to the identified risk, as part of our audit work we:

- Confirmed on a sample basis that expenditure was properly authorised and made in accordance with the terms of the relevant fund;
- Used data analytics to test journal entries throughout the year for appropriateness;
- Reviewed estimates and judgements made in the accounts for any indication of bias and challenged assumptions used by management in making estimates.
- Reviewed financial statement disclosures and examined relevant supporting documentation to assess compliance with applicable laws and regulations.

Because of the inherent limitations of an audit, there is a risk that we will not detect all irregularities, including those leading to a material misstatement in the financial statements. This risk increases the further removed non-compliance with laws and regulations is from the events and transactions reflected in the financial statements as we are less likely to become aware of instances of non-compliance. The risk of not detecting a material misstatement due to fraud is higher than the risk of not detecting one resulting from error, as fraud may involve deliberate concealment, collusion, omission or misrepresentation.

A further description of our responsibilities for the audit of the financial statements is located on the Financial Reporting Council's website at: www.frc.org.uk/auditorsresponsibilities. This description forms part of our auditor's report.

Farms for City Children Limited

Independent Auditor's report to the Members of Farms for City Children Limited for the Year Ended 31 August 2022 *(continued)*

Use of our report

This report is made solely to the charitable company's members, as a body, in accordance with Chapter 3 of Part 16 of the Companies Act 2006. Our audit work has been undertaken so that we might state to the charitable company's members those matters we are required to state to them in an auditor's report and for no other purpose. To the fullest extent permitted by law, we do not accept or assume responsibility to anyone other than the charitable company and the charitable company's members as a body for our audit work, for this report, or for the opinions we have formed.



Catherine Williams FCA DChA

Senior Statutory Auditor

For and on behalf of

Westcotts (SW) LLP

47 Boutport Street

Barnstaple

Devon

EX31 1SQ

Date: 3rd February 2023

Farms for City Children Limited
Statement of Financial Activities
(including the Income and Expenditure Account)
for the year ending 31 August 2022

	Note	Unrestricted Funds £	Restricted Funds £	Total Funds 2022 £	Total Funds 2021 £
Income					
<i>Donations and legacies</i>					
Donations and legacies	3	446,018	101,481	547,499	447,691
<i>Income from charitable activities:</i>					
Charitable activities	4	1,090,149	267,450	1,357,599	839,870
<i>Income from other trading activities:</i>					
Trading operations	5	46,970	-	46,970	27,649
Investment income	6	1,131	-	1,131	540
Other income		3,537	-	3,537	-
Total income		1,587,805	368,931	1,956,736	1,315,750
Expenditure					
<i>Costs of raising funds:</i>					
Trading operations		24,296	-	24,296	9,605
Fundraising support costs		214,325	-	214,325	165,926
<i>Expenditure on charitable activities:</i>					
Charitable activities	7	1,601,771	346,247	1,948,018	1,044,921
Total expenditure		1,840,392	346,247	2,186,639	1,220,452
Transfers between funds		(9,464)	9,464	-	-
Gain on sale of land		535,597	-	535,597	-
Net (expenditure)/income and net movement in funds for the year	9	273,546	32,148	305,694	95,298
Reconciliation of funds					
Total Funds brought forward		989,184	2,528,944	3,518,128	3,422,830
Total funds carried forward		1,262,730	2,561,092	3,823,822	3,518,128

The statement of financial activities includes all gains and losses recognised in the year.
All income and expenditure derive from continuing activities.
The notes on pages 31 to 49 form an integral part of the Financial Statements.

Farms for City Children Limited
Balance Sheet
as at 31 August 2022

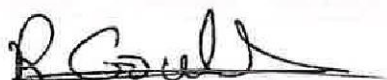
	Note	2022 £	2021 £
Fixed assets			
Tangible assets	17	2,911,128	3,011,758
Investment		6,097	6,097
		2,917,225	3,017,855
Current assets			
Stock	18	47,307	29,324
Debtors	19	194,890	338,694
Cash at bank and in hand	20	1,432,207	1,286,447
		1,674,404	1,654,465
Liabilities			
Creditors falling due within one year	21	(767,807)	(1,154,192)
Net Current assets		906,597	500,273
Net assets		3,823,822	3,518,128
The funds of the Charity:			
Unrestricted funds	22	1,262,730	989,184
Restricted funds		2,561,092	2,528,944
Total charity funds		3,823,822	3,518,128

Registered Company No: 01177239

These accounts are prepared in accordance with the special provisions of Part 15 of the Companies Act relating to small companies and constitute the annual accounts required by the Companies Act 2006 and are for circulation to members of the company.

These financial statements were approved by the members of the Board authorised for issue on the 3rd February 2023 and are signed on their behalf by:

Signed



Rachel Gault, Chair of Board on behalf of the Trustees

The notes on pages 31 to 49 form an integral part of the Financial Statements.

Farms for City Children Limited
Statement of Cash Flows
for year ending 31 August 2022

	Note	2022 £	2021 £
Cash used in operating activities	25	(84,739)	533,466
Cash flows from investing activities			
Interest income		1,131	540
Repayment of investment from FFCC Enterprises Ltd		-	82
Sale of tangible fixed assets		645,200	-
Purchase of tangible fixed assets		(94,538)	(422,111)
Cash used in investing activities		551,793	(421,489)
Cash used in financing activities			
Draw down of bank borrowings (CBIL)		(321,294)	320,000
Cash used in financing activities		(321,294)	320,000
(Decrease)/increase in cash and cash equivalents in the year		145,760	431,977
Cash and cash equivalents at the beginning of the year		1,286,447	854,470
Total cash and cash equivalents at the end of the year		1,432,207	1,286,447

The notes at pages 31 to 49 form an integral part of the Financial Statements.

Farms for City Children Limited

Notes to the accounts for the year ending 31 August 2022

1. Accounting Policies

The principal accounting policies adopted, judgements and key sources of estimation uncertainty in the preparation of the Financial Statements are as follows:

a) Basis of preparation

The Financial Statements have been prepared in accordance with Accounting and Reporting by Charities: Statement of Recommended Practice applicable to charities preparing their accounts in accordance with the Financial Reporting Standard applicable in the UK and Republic of Ireland (FRS 102) (effective 1 January 2015) - (Charities SORP (FRS 102)), the Financial Reporting Standard applicable in the UK and Republic of Ireland (FRS 102) and the Companies Act 2006.

Farms for City Children meets the definition of a public benefit entity under FRS102. Assets and liabilities are recognised at historical cost or transaction value unless otherwise stated in the relevant accounting policy note(s).

The Financial Statements are prepared in sterling, which is the functional currency of the entity.

b) Trading Subsidiary and consolidated accounts

FFCC Enterprises Ltd, the wholly owned subsidiary of the Charity, did not trade in the financial year ending 31 August 2022. Consolidated accounts have not been prepared on the basis that the subsidiary is wholly immaterial to the group.

c) Reconciliation with previous Generally Accepted Accounting Practice

In preparing the accounts, the Trustees have considered whether in applying the accounting policies required by FRS 102 and the Charities SORP FRS 102 the restatement of comparative items was required.

d) Judgements and key accounting estimates

The preparation of the financial statements requires management to make judgements, estimates and assumptions that affect the amounts reported. These estimates and judgements are continually reviewed and are based on experience and other factors, including expectations of future events that are believed to be reasonable under the circumstances.

Farms for City Children Limited

Notes to the accounts for the year ending 31 August 2022 (continued)

1. Accounting Policies (continued)

Significant judgements

The judgements (apart from those involving estimations) that management has made in the process of applying the entity's accounting policies and that have the most significant effect on the amounts recognised in the financial statements are as follows:

- Determination of whether there are indicators of impairment of the Charity's tangible fixed assets. Factors taken into consideration in reaching such a decision include the economic viability and expected future financial performance or charitable use of the asset.
- Determination of whether leases entered into by the Charity as lessee are operating or finance leases. These decisions depend on an assessment of whether the risks and rewards of ownership have been transferred from the lessor to the lessee on a lease-by-lease basis.
- Determination of recoverability of trade debtors. A specific provision is made against certain debts where in the opinion of the Trustees the debt is not fully recoverable.

Key sources of estimation uncertainty

Accounting estimates and assumptions are made concerning the future and, by their nature, will rarely equal the related actual outcome. The key assumptions and other sources of estimation uncertainty that have a significant risk of causing a material adjustment to the carrying amounts of assets and liabilities within the next financial year are as follows:

- Tangible fixed assets are depreciated over their useful lives taking into account residual values, where appropriate. Leasehold property improvements are capitalised and depreciated over the remaining years of the lease. The actual lives of the assets and residual values are assessed annually and may vary depending on a number of factors. In re-assessing asset lives, factors such as technological innovation, product life cycles and maintenance are taken into account. Residual value assessments consider issues such as future market conditions, the remaining life of the asset and projected disposal values.

e) Preparation of the accounts on a going concern basis

As explained in the Trustees' Annual Report, the Trustees have approved a detailed budget for 2022-23, based on the all-year round operating model with plans for increased income generation and fundraising. Having taken into consideration the availability of cash and the level of forecast reserves the Trustees believe it is appropriate to prepare the Financial Statements on the going concern basis.

Farms for City Children Limited

Notes to the accounts for the year ending 31 August 2022 (continued)

1. Accounting Policies (continued)

f) Income recognition policies

Items of income are recognised and included in the accounts when all of the following criteria are met:

- the Charity has entitlement to the funds;
- any performance conditions attached to the item(s) of income have been met or are fully within the control of the Charity;
- there is sufficient certainty that receipt of the income is considered probable; and
- the amount can be measured reliably.

Income from residential visits is accounted for when a school visits one of the charity's three farms. Payments received in advance of the visit are deferred until the criteria for income recognition are met.

Other trading activities are accounted for in the accounting period to which the income relates.

g) Donated services and facilities

Donated services or facilities are recognised as income when the Charity has control over the item, any conditions associated with the donated item have been met, the receipt of economic benefit from the use by the Charity of the item is probable and that economic benefit can be measured reliably. On receipt, donated services and facilities are recognised on the basis of the value of the gift to the Charity which is the amount the Charity would have been willing to pay to obtain services or facilities of equivalent economic benefit on the open market; a corresponding amount is then recognised in expenditure in the period of receipt.

h) Interest receivable

Interest on funds held on deposit is included when receivable and the amount can be measured reliably by the Charity; this is normally upon notification of the interest paid or payable by the Bank.

i) Fund accounting

Unrestricted funds are available to spend on activities that further any of the purposes of the Charity. Restricted funds are donations which the donor has specified are to be solely used for particular areas of the Charity's work or for specific projects being undertaken by the Charity.

Farms for City Children Limited

Notes to the accounts for the year ending 31 August 2022 *(continued)*

1. Accounting Policies (continued)

j) Expenditure and irrecoverable VAT

Expenditure is recognised once there is a legal or constructive obligation to make a payment to a third party, it is probable that settlement will be required and the amount of the obligation can be measured reliably. Expenditure is classified under the following activity headings:

- Costs of raising funds comprise the costs of trading and their associated support costs and fundraising support costs.
- Expenditure on charitable activities includes the costs of the provision of services and activities undertaken to further the purposes of the Charity and their associated support costs.
- Farms for City Children is not registered for VAT and cannot recover VAT on any of its purchases. Irrecoverable VAT is charged as a cost against the activity for which the expenditure was incurred.

k) Allocation of support costs

Support costs are those functions that assist the Charity's work but do not directly undertake charitable activities. Support costs include back-office costs, finance, HR, payroll and governance costs which support the work of the Charity. The bases on which support costs have been allocated are set out in note 8.

l) Operating leases

The Charity classifies the lease of printing equipment as an operating lease; the title to the equipment remains with the lessor and the equipment is replaced every 5 years whilst the economic life of such equipment is normally 10 years. Rental charges are charged on a straight-line basis over the term of the lease.

The Charity leases offices at Huxham Barns, Huxham, Exeter and this is classified as an operating lease. A new lease was agreed in the year for 8 years, ending in May 2027.

The Charity leases land from the National Trust at Lower Treginnis with a rolling notice period of 12 months which is also classified as an operating lease.

The Charity classifies the letting of land at Nethercott House, Lower Treginnis and Wick Court under Farming Business Tenancy agreements as operating leases; the title to the land remains with the lessor. The Farm Business Tenancy agreement with the Oldbury Farm Partnership at Wick Court came to an end on 14 January 2022 and the Farm Business Tenancy agreement with Mr G Ward was terminated on 6 September 2022. All other agreements currently have an end date of 31 August 2026, but either party to each lease may terminate the lease by giving 12 months' notice. The total annual rent receivable is £18,519 (2021: £21,119).

Farms for City Children Limited

Notes to the accounts for the year ending 31 August 2022 (continued)

1. Accounting Policies (continued)

m) Tangible fixed assets

Depreciation is provided on all tangible fixed assets, at rates calculated to write off the cost, less estimated residual value, of each asset over its expected useful economic life, as follows:

Asset Category	Depreciation Rate
Freehold buildings and improvements	
Nethercott House	50 years
Leasehold improvements	
Lower Treginnis	60 years
Wick Court	99 years
Plant and machinery	5 to 25 years
Furniture and equipment	5 years

Freehold land is not depreciated.

Donated fixed assets are recognised at fair value which is the amount the Charity would have been willing to pay for the items on the open market.

Assets with a value below £2,000 or a life span of less than 1 year are not capitalised within the Financial Statements but expensed to the SOFA.

n) Stock

Trading stock is included at the lower of cost and net realisable value. Net realisable value is based on selling price less any future costs expected to be incurred to completion and disposal.

Animal stocks are included at deemed cost or net realisable value. Feed and resale stock is included at cost.

o) Debtors

Trade and other debtors are recognised at the settlement amount due after any trade discount offered. Prepayments are valued at the amount prepaid net of any trade discounts due.

p) Cash at bank and in hand

Cash at bank and cash in hand includes cash and short term highly liquid investments with a short maturity of three months or less from the date of acquisition or opening of the deposit or similar account.

Farms for City Children Limited

Notes to the accounts for the year ending 31 August 2022 (continued)

1. Accounting Policies (continued)

q) Creditors and provisions

Creditors and provisions are recognised where the Charity has a present obligation resulting from a past event that will probably result in the transfer of funds to a third party and the amount due to settle the obligation can be measured or estimated reliably. Creditors and provisions are normally recognised at their settlement amount after allowing for any trade discounts due.

r) Financial instruments

The Charity only has financial assets and financial liabilities of a kind that qualify as basic financial instruments. Basic financial instruments are initially recognised at transaction value and subsequently measured at their settlement value with the exception of bank loans which are subsequently measured at amortised cost using the effective interest method. The financing charge to expenditure is at a constant rate calculated using the effective interest method.

s) Pensions

The Charity contributes to an auto enrolment compliant group money purchase defined contribution pension scheme operated by NEST. New and existing employees are automatically enrolled into the money purchase scheme unless they have exercised their right to opt out of scheme membership.

Employees joining the money purchase pension scheme operated by NEST contract directly with the insurance company. The Charity makes a matching contribution of 6% (2021: 6%) of salary to this pension scheme and acts as agent in collecting and paying over employee pension contributions.

2. Legal status of the Charity

Farms for City Children is a company limited by guarantee, incorporated in England & Wales, and has no share capital. In the event of the Charity being wound up, the liability in respect of the guarantee is limited to £1 per member of the Charity.

The registered office address is Unit 2, Huxham Barns, Huxham, Exeter, EX5 4EJ.

Farms for City Children Limited

Notes to the accounts for the year ending 31 August 2022 (continued)

3. Income from donations and legacies

	Unrestricted Funds 2022 £	Restricted Funds 2022 £	Total Funds 2022 £	Total Funds 2021 £
Donations	416,605	54,747	471,352	393,758
Profit donated by FFCC Enterprises Ltd	-	-	-	8,833
Legacies	29,413	46,734	76,147	45,100
	446,018	101,481	547,499	447,691

Income from donations includes Gift Aid. From time to time Farms for City Children benefits from the involvement and support of volunteers. In accordance with accounting standards, the economic contribution of general volunteers is not recognised in the accounts.

4. Income from Charitable Activities

	Unrestricted Funds 2022 £	Restricted Funds 2022 £	Total Funds 2022 £	Total Funds 2021 £
Residential visits	815,671	-	815,671	-
Day visits	4,000	-	4,000	10,030
Grants – Capital	-	11,000	11,000	399,340
Grants – Revenue	237,962	256,450	494,412	249,251
HMRC Coronavirus Job Retention Scheme	-	-	-	135,298
Farm produce sales	10,589	-	10,589	20,403
Farm livestock sales	5,658	-	5,658	10,229
Rural Payments Agency grants	16,269	-	16,269	15,319
	1,090,149	267,450	1,357,599	839,870

Farms for City Children Limited

Notes to the accounts for the year ending 31 August 2022 (continued)

5. Income earned from trading activities

Trading income consists of income from the hire and letting of spaces at the farms, other farm trading and the sale of gifts, books, and cards.

	2022 £	2021 £
Rent received	18,519	22,119
Sales of gifts, books and cards	26,973	4,660
Miscellaneous income	1,478	870
	46,970	27,649

6. Investment income

All of Farms for City Children's investment income arises from money held in interest bearing deposit accounts.

7. Analysis of expenditure on charitable activities

	2022 £	2021 £
<i>Operation of farms</i>		
Livestock purchases & produce costs	3,367	20,102
Staff costs	1,020,384	370,050
Premises costs	263,937	163,099
Other operating costs	153,273	93,746
Depreciation	78,878	91,682
<i>Support costs (see note 8)</i>		
Staff costs	271,515	198,444
Other costs	110,236	47,798
<i>Governance costs (see note 8)</i>		
Audit & accountancy	9,600	14,400
Board costs	2,715	7,462
Staff costs	34,113	38,138
	1,948,018	1,044,921

Of the £1,948,018 expenditure in 2021-22 (2021: £1,044,921), £1,601,771 was charged to unrestricted funds (2021: £840,613) and £346,247 to restricted funds (2021: £204,308).

Farms for City Children Limited

Notes to the accounts for the year ending 31 August 2022 (continued)

8. Analysis of governance and support costs

Farms for City Children initially identifies the costs of its support functions. It then identifies those costs which relate to the governance function. Having identified its governance costs, the remaining support costs together with the governance costs are apportioned between the key charitable activities undertaken (see note 7) in the year. Refer to the table below for the basis for apportionment and the analysis of support and governance costs.

	Analysis of support and governance costs				Basis of apportionment
	General support	Governance function	Total 2022	Total 2021	
	£	£	£	£	
Salaries, wages & related costs	271,515	34,113	305,628	236,582	Staff time
General office costs	82,239	2,715	84,954	46,077	Direct
Legal fees	27,997	-	27,997	9,183	Direct
Audit & tax fees	-	9,600	9,600	14,400	Direct
Total	381,751	46,428	428,179	306,242	

9. Net income/(expenditure) for the year

	2022	2021
	£	£
This is stated after charging:		
Operating leases – equipment	39,221	38,534
Depreciation	78,878	91,682
(Profit)/Loss on disposal of fixed assets	(528,910)	1,647
Audit & tax fees	9,600	14,400
	(401,211)	146,263

10. Investments

The Charity owns the sole £1 share issued by FFCC Enterprises Limited (registration number 03804473) which was incorporated to operate the charity's trading activities. The current investment value in FFCC Enterprises Limited is £6,097 (2021: £6,097), this represents £1 share capital and a loan of £6,096 (2021: £6,096). The net assets of the subsidiary at 31 August 2022 were £19,413 (2021: £19,447). The registered office of FFCC Enterprises Limited is the same as that of Farms for City Children shown in the Trustees' Report.

The Trustees made the decision to bring the subsidiary's activity into the main charity from 1 September 2020.

Farms for City Children Limited

Notes to the accounts for the year ending 31 August 2022 (continued)

11. Analysis of staff costs, trustee remuneration and expenses, and the cost of key management personnel

	2022	2021
	£	£
Salaries and wages	1,302,455	657,417
Social security costs	119,148	58,711
Pension costs	64,453	38,032
Other employee benefits	100	240
Other wages costs (including subcontractors & recruitment)	42,147	22,482
	1,528,303	776,882

No employees had employee benefits in excess of £60,000 (2021: 1). Pension costs are allocated to activities in proportion to the related staffing costs incurred. Redundancy and termination costs totalled £8,976 in the year (2021: £nil).

The pension costs charged represent contributions payable by the Charity to schemes for the year.

The key management personnel of Farms for City Children comprise the Chief Executive (Vanessa Fox resigned 3 January 2022, Donna Edmonds appointed 22 January 2022), the Head of Fundraising (resigned 31 August 2022), the Head of Operations, the Head of Finance & Resources, the Head of Sales & Marketing (appointed 1 May 2022) and three Farm School Managers. The total employee benefits (salary and pension contributions) of the key management personnel were £390,687 – 8 people (2020: £309,916 – 7 people).

The Trustees were not paid or received any other benefits from employment with Farms for City Children in the year (2021: £nil). 2 trustees were reimbursed expenses to the value of £315 for attending meetings in the year (2021: £nil).

12. Staff Numbers

The average monthly number of employees (including casual and part time staff) analysed by function during the year was as follows:

	2022	2021
	Number	Number
Management, Fundraising & Administration	17	14
Education, domestic & agricultural	31	8
	48	22

Farms for City Children Limited

Notes to the accounts for the year ending 31 August 2022 (continued)

13. Defined contribution pension scheme

The Charity operates a defined contribution pension scheme. The pension cost charge for the year represents employer contributions payable by the charity to the scheme and amounted to £64,453 (2021: £38,032).

Employee and employer contributions totalling £9,800 (2021: £4,991) were payable to the scheme at the end of the year and are included in creditors.

14. Related party transactions

Simon Gregory is a consultant at Foot Anstey LLP. Foot Anstey LLP supplied services in the year totalling £5,116 (2021: £316 refund). There was no outstanding balance at the end of the year (2021: £nil).

Justin Albert OBE is a Director for Wales, The National Trust. Farms for City Children paid rent for Lower Treginnis to The National Trust of £6,400 (2021 £6,400). There was no outstanding balance at the year end (2021: £nil).

Jonathan Bishop is the CEO and Executive Headteacher of Cornerstone Academy Trust. Yeo Valley Primary School, a school in the trust, attended a week's residential at Nethercott House in September 2021 at a cost of £10,724. The outstanding balance at the year end was £3,500, relating to a residential visit in 2022.

Donations from Trustees amounted to £16,961 in the year (2021: £7,175).

15. Corporation Taxation

Farms for City Children is exempt from tax on income and gains falling within section 505 of the Taxes Act 1988 or section 252 of the Taxation of Chargeable Gains Act 1992 to the extent that these are applied to its charitable objects.

Farms for City Children Limited

Notes to the accounts for the year ending 31 August 2022 (continued)

16. Transfer between funds

A transfer of £9,464 was made from Unrestricted Funds to Restricted Funds to ensure the Restricted Fixed Assets are presented correctly.

17. Tangible fixed assets

	Freehold Property	Leasehold Property	Plant & Machinery	Furniture & Equipment	Total
	£	£	£	£	£
Cost:					
As at 1 September 2021	1,107,879	2,716,727	444,319	137,923	4,406,848
Additions	14,396	45,993	34,149	-	94,538
Disposals	(109,403)	-	(8,641)	(27,231)	(145,275)
As at 31 August 2022	1,012,872	2,762,720	469,827	110,692	4,356,111
Depreciation:					
As at 1 September 2021	171,969	755,372	350,095	117,654	1,395,090
Disposals	-	-	(8,641)	(20,344)	(28,985)
Charge for the year	15,136	35,448	23,028	5,266	78,878
As at 31 August 2022	187,105	790,820	364,482	102,576	1,444,983
Net book value					
As at 1 September 2021	935,910	1,961,355	94,224	20,269	3,011,758
As at 31 August 2022	825,767	1,971,900	105,345	9,980	2,911,128

18. Stock

	2022 £	2021 £
Animals and goods for resale	28,485	21,418
Non animal stock used in operating farms	18,822	7,906
	47,307	29,324

19. Debtors

	2022 £	2021 £
Trade debtors	51,104	203,445
Prepayments and accrued income	143,786	135,249
	194,890	338,694

Farms for City Children Limited

Notes to the accounts for the year ending 31 August 2022 *(continued)*

20. Cash at bank and in hand

The cash figure includes £640,946 (2021: £685,319) relating to deposits and final balances received for residential visits in the period ending 31 August 2023.

21. Creditors: amounts falling due within one year

	2022	2021
	£	£
Trade creditors	47,379	91,919
Other creditors and accruals	50,238	35,350
Deferred income (residential visits to 31 August 2023)	640,946	685,319
NatWest Bank Loan (CBIL)	-	320,000
Taxation and social security	29,244	21,604
	767,807	1,154,192

In August 2020 the Charity agreed a Coronavirus Business Interruption Loan (CBIL) with our primary bankers, NatWest to provide cash flow during the pandemic. The loan was repaid in full in January 2022.

Deferred income comprises deposits and balances received for residential visits. The movement on this income invoiced in advance and is as follows:

	2022	2021
	£	£
Deferred income at 1 September 2021	685,319	256,363
Resources deferred in the year	357,819	428,956
Amounts released in the year	(402,192)	-
Deferred Income at 31 August 2022	640,946	685,319

Farms for City Children Limited

Notes to the accounts for the year ending 31 August 2022 (continued)

22. Analysis of charitable funds

Analysis of movements in unrestricted funds

a) Year ending 31 August 2022

	Balance 1 September 2021 £	Incoming resources £	Resources expended £	Transfers £	Funds 31 August 2022 £
General fund	989,184	2,123,402	(1,840,392)	(9,464)	1,262,730

b) Year ending 31 August 2021

	Balance 1 September 2020 £	Incoming resources £	Resources expended £	Transfers £	Funds 31 August 2021 £
General fund	1,289,719	715,609	(1,016,144)	-	989,184

Name of unrestricted fund

Description, nature and purposes of the fund

General fund

Unrestricted funds used at the discretion of the Trustees to further any of the Charity's purposes. The Trustees' policy is to maintain the general fund at an appropriate level, planning for adverse economic conditions and other potential threats, safeguarding the long-term future of the charity and providing assurance to schools, staff and supporters.

Farms for City Children Limited

Notes to the accounts for the year ending 31 August 2022 (continued)

22. Analysis of charitable funds (continued)

Analysis of movements in restricted funds

a) Year Ending 31 August 2022

	Balance 1 September 2021 £	Incoming resources £	Resources expended £	Transfers	Funds 31 August 2022 £
<u>Charity wide</u>					
Geographically restricted child places	40,523	97,992	(100,195)	-	38,320
Access Funds	44,493	146,396	(81,093)	-	109,796
Residential and day visits	6,000	64,304	(63,870)	-	6,434
Restoration of buildings	61,224	-	(627)	(50,620)	9,977
	152,240	308,693	(245,785)	(50,620)	164,527
<u>Nethercott House</u>					
Farm equipment	2,086	-	(2,086)	-	-
Residential visits at Nethercott House	-	25,000	(25,000)	-	-
All other donations < £1,000	-	1,060	(1,060)	-	-
Own Use Property	566,587	-	(14,972)	10,100	561,715
	568,673	26,060	(43,118)	10,100	561,715
<u>Lower Treginnis</u>					
Restoration of buildings	5,694	-	(1,352)	(4,342)	-
Farm equipment & garden work	-	12,028	(3,789)	(8,239)	-
All other donations < £1,000	-	1,620	(1,620)	-	-
Own use Property	447,150	-	(17,380)	42,713	472,483
	452,844	13,648	(24,141)	30,132	472,483
<u>Wick Court</u>					
Friends of Wick Court	-	237	(237)	-	-
Plant & machinery	-	11,000	(597)	(10,403)	-
Residential visits at Wick Court	-	5,000	(5,000)	-	-
Reintroducing horses at Wick Court	-	2,000	(2,000)	-	-
All other donations < £1,000	-	2,294	(2,294)	-	-
Own use Property	1,355,187	-	(23,075)	30,255	1,362,367
	1,355,187	20,531	(33,203)	19,852	1,362,367
Total	2,528,944	368,931	(346,247)	9,464	2,561,092

Farms for City Children Limited

Notes to the accounts for the year ending 31 August 2022 (continued)

22. Analysis of charitable funds (continued)

b) Year Ending 31 August 2021

	Balance 1 September 2020 £	Incoming resources £	Resources expended £	Transfers	Funds 31 August 2021 £
<u>Charity wide</u>					
Geographically restricted child places	-	40,523	-	-	40,523
Access Funds	26,993	17,500	-	-	44,493
Covid-19 emergency funding	-	101,950	(101,950)	-	-
Residential and day visits	-	14,700	(8,700)	-	6,000
Restoration of buildings	-	120,000	-	(58,776)	61,224
Governance Fund	-	1,688	(1,688)	-	-
	26,993	296,361	(112,338)	(58,776)	152,240
<u>Nethercott House</u>					
Outdoor Games	129	-	(129)	-	-
Day Visits	-	5,671	(5,671)	-	-
Farm equipment	-	2,086	-	-	2,086
All other donations < £1,000	-	1,922	(1,922)	-	-
Own Use Property	575,357	-	(14,770)	6,000	566,587
	575,486	9,679	(22,492)	6,000	568,673
<u>Lower Treginnis</u>					
Restoration of buildings	2,126	4,830	(1,262)	-	5,694
Farm equipment & garden work	5,915	1,500	(7,415)	-	-
All other donations < £1,000	-	2,443	(2,443)	-	-
Own use Property	446,903	-	(15,388)	15,635	447,150
	454,944	8,773	(26,508)	15,635	452,844
<u>Wick Court</u>					
Pond dipping	843	-	(843)	-	-
Friends of Wick Court	10,470	437	(10,907)	-	-
Roof	4,037	-	(4,037)	-	-
Restoration of buildings	-	279,340	-	(279,340)	-
Day Visits	-	5,080	(5,080)	-	-
All other donations < £1,000	-	471	(471)	-	-
Own use Property	1,060,338	-	(21,632)	316,481	1,355,187
	1,075,688	285,328	(42,970)	37,141	1,355,187
Total	2,133,111	600,141	(204,308)	-	2,528,944

Farms for City Children Limited

Notes to the accounts for the year ending 31 August 2022 (continued)

22. Analysis of charitable funds (continued)

Name of restricted fund	Description, nature and purposes of the fund
Geographically restricted child places	Donations received to support children from specific geographical areas of the UK or specific schools.
Access Funds	Funding received from various trusts & foundations which was allocated to support schools that would not be able to visit our farms without additional financial support.
Covid-19 emergency funding	Funding received from the Heritage Emergency Fund and the Charity Survival Fund (Julia and Hans Rausing Trust) to support core costs during the Covid-19 pandemic.
Residential visits (all farms)	Funding received from various trusts & foundations to support residential visits.
Day visits (all farms)	Funding and donations received to support children to visit the farm for the day during the Covid-19 pandemic.
Restoration of buildings (all farms)	Grants received to support the restoration, maintenance & improvement of the farm buildings. An amount of £9,977 is carried forward for restoration works at Wick Court.
Governance Fund	Funds received to assist with recruitment of new Trustees.
Own use Property (all farms)	The restricted capital fund balances for Nethercott House, Lower Treginnis and Wick Court include funds received for specific capital developments, and assets including land, property values and major plant.
All other donations < £1,000 (all farms)	Donations received for a specific farm; these are allocated to core running costs for each farm.
Nethercott House: Outdoor Games	Funding received from GC Gibson Charitable Fund Trust for the purchase of outdoor games for visiting children.
Nethercott House: Farm equipment	Funds received from the Co-op Community Fund to purchase log splitters for the children to use on the farm.
Lower Treginnis: Farm equipment & garden work	Donations received to fund various items of farm equipment and garden work. In 2021-22, funds received enabled the purchase of a new chicken shed and a dishwasher as well as further garden works.
Wick Court: Pond dipping	Funds received from the Halpin Trust and local businesses for the construction of a new pond dipping platform and associated equipment.
Wick Court: Friends of Wick Court	Donations received this year partly funded maintenance costs at Wick Court.
Wick Court: Roof	Grants received funded the replacement of the main house roof.
Wick Court: Plant & Machinery	Funds received from the Halpin Trust funded the purchase of a new greenhouse and garden tractor.
Wick Court: Reintroducing horses	Funds received from Lord Barnby's Trust partly funded the reintroduction of horses at Wick Court.

Farms for City Children Limited

Notes to the accounts for the year ending 31 August 2022 (continued)

23. Analysis of net assets between funds

a) Year ending 31 August 2022

	Unrestricted Funds £	Restricted Funds £	Total £
Tangible fixed assets	514,563	2,396,565	2,911,128
Investment	6,097	-	6,097
Cash at bank and in hand	1,302,680	129,527	1,432,207
Other net current assets/(liabilities)	(560,610)	35,000	(525,610)
Total	1,262,730	2,561,092	3,823,822

b) Year ending 31 August 2021

	Unrestricted Funds £	Restricted Funds £	Total £
Tangible fixed assets	633,597	2,378,161	3,011,758
Investment	6,097	-	6,097
Cash at bank and in hand	1,160,664	125,783	1,286,447
Other net current assets/(liabilities)	(811,174)	25,000	(786,174)
Total	989,184	2,528,944	3,518,128

24. Commitments under operating leases

The total future minimum lease payments under non-cancellable operating leases are as follows:

	2022 £	2021 £
Not later than 1 year	23,168	37,869
Later than 1 year and not later than 5 years	62,251	120,934
Later than 5 years	-	80,520
	85,419	239,323

Farms for City Children Limited

Notes to the accounts for the year ending 31 August 2022 (continued)

25. Reconciliation of net movement in funds to net cash flow from operating activities

	2022 £	2021 £
Net movement in funds	305,694	95,298
Add back depreciation charge	78,878	91,682
Deduct interest income shown in investing activities	(1,131)	(540)
Loss/(profit) on disposal of fixed assets	(528,910)	1,647
Decrease/(increase) in stock	(17,983)	14,514
(Increase)/decrease in debtors	143,804	(165,221)
Increase/(decrease) in creditors	(65,091)	496,086
Net cash used in operating activities	(84,739)	533,466

26. Net debt reconciliation

	Balance 1 September 2021 £	Cashflows £	Other non- cash changes £	Balance 31 August 2022 £
Cash at bank and in hand	1,286,447	145,760	-	1,432,207
Bank loan falling due within 1 year	(320,000)	321,294	(1,294)	-
	966,447	467,054	(1,294)	1,432,207

27. Capital Commitments

Farms for City Children has future commitments for the following projects and expects these commitments to be contracted within the next year and financed by cash reserves and grants.

	2022 £	2021 £
Capital expenditure that has been contracted but has not been provided for in the Financial Statements	-	66,917