

Company no. 02114442
Charity no. 297091

St. Werburghs City Farm
Report and Unaudited Financial
Statements
31 March 2025

St. Werburghs City Farm

Reference and administrative details

For the year ended 31 March 2025

Company number	02114442
Charity number	297091
Registered office and operational address	Watercress Road St. Werburghs Bristol BS2 9YJ
Trustees	Trustees, who are also directors under company law, who served during the year and up to the date of this report were as follows: Jacqueline Barker Chair Jonathan Brockwell Jess Bunyan Tesni Clare Tola Fisher resigned 7 October 2024 Clara Greenwood Keiko Higashi appointed 7 October 2024 Fiona McDonald resigned 17 March 2025, reappointed 26 July 2025 Emma Morton Lisa Pascoe Shankari Raj appointed 7 October 2024
Key staff	A Bowsher Sites Operational Manager C Briseid Marketing, Comms and Events Operational Manager J Clynewood Director (Job Share, resigned June 2024) C Datta Child & Youth Manager (Job Share) L Emerson Child & Youth Manager (Job Share, resigned February 2025) S Flint Supported Farming and Green Care Manager J Howard Coles Director B Lambert Estates and Livestock Manager A Lee Propagation Place Manager D Lindo-Jones Finance Manager (resigned November 2024) F McDonald Finance Manager (appointed March 2025) I Patrick Services Operational Manager M Robbins Fundraising Manager (appointed August 2024)
Bankers	HSBC Bank PLC Ecology Building Society 27 Gloucester Road North 7 Belton Road Filton Silsden, Keighley Bristol West Yorkshire BS7 0SQ BD20 0EE

St. Werburghs City Farm

Reference and administrative details

For the year ended 31 March 2025

Investment managers Epworth Investment Management Limited
9 Bonhill Street
London
EC2A 4PE

Insurers Hiscox Insurance
c/o Arthur J Gallagher (UK) Limited
Spectrum Building
7th Floor
55 Blythswood Street
Glasgow
G2 7AT

Independent examiners Godfrey Wilson Limited
Chartered accountants and statutory auditors
5th Floor Mariner House
62 Prince Street
Bristol
BS1 4QD

St. Werburghs City Farm

Report of the trustees

For the year ended 31 March 2025

Chair's report for annual report 2024-25

I am immensely proud to share this annual report. St Werburghs City Farm has used its resources throughout the year to provide space and support to the community. Welcoming people facing disadvantage, marginalisation and struggle – together we have created welcoming, healthy and fun spaces for the whole community to enjoy.

In these pages, you will read how our services have gone from strength to strength, and how our participants have made amazing things happen! You will hear about how our volunteers have upgraded Farm infrastructure and how our adult participants have grown produce to share and developed beautiful new wildlife areas. Young people have produced hundreds of meals at our Youth Café, cared for our animals and accessed new parts of the Farm for outdoor play. We have crossed cultural bridges, grown friendships and connections, learned new skills, and gained confidence and optimism about the future.

Many of our spaces have seen a huge amount of renewal and improvement this year, but for some of our key spaces – the time has come for change! With support from Bristol City Council, we started developing our thinking about how our spaces need to change to support our communities in the future, with a community consultation currently underway.

It has remained a challenging financial environment for charities, and the team have worked really hard to balance our books. Costs have risen across all of our activities, and fundraising has remained a challenge. It is with relief and gratitude that we share these accounts which show that we have raised enough income to cover our costs this year.

I would like to take this opportunity to thank everyone who been part of the Farm this year, and everyone who has made our work possible. Thank you to the Farm staff, volunteers, participants and young people. Thank you to all the community members and all the other people who collaborate with the Farm. Thank you to everyone that has attended an event, tapped to donate, put a few pounds in a collection tin or become a monthly donor: your support makes all this possible.

Jackie Barker, Chair of Trustees

St. Werburghs City Farm

Report of the trustees

For the year ended 31 March 2025



Structure, Governance and Management

St Werburghs City Farm was incorporated as a charity on the 23 March 1987 and amended by special resolution on the 5 October 2013.

Reference and administrative information set out on page 1 forms part of this report. The financial statements comply with current statutory requirements, the Memorandum and Articles of Association and the Statement of Recommended Practice - Accounting and Reporting by Charities (effective from January 2019).

Trustee recruitment process

The Farm periodically promotes vacancies on the Board of Trustees and advertises this on the Farm's website, through its newsletter and via other local networks. The process for applying is described as follows:

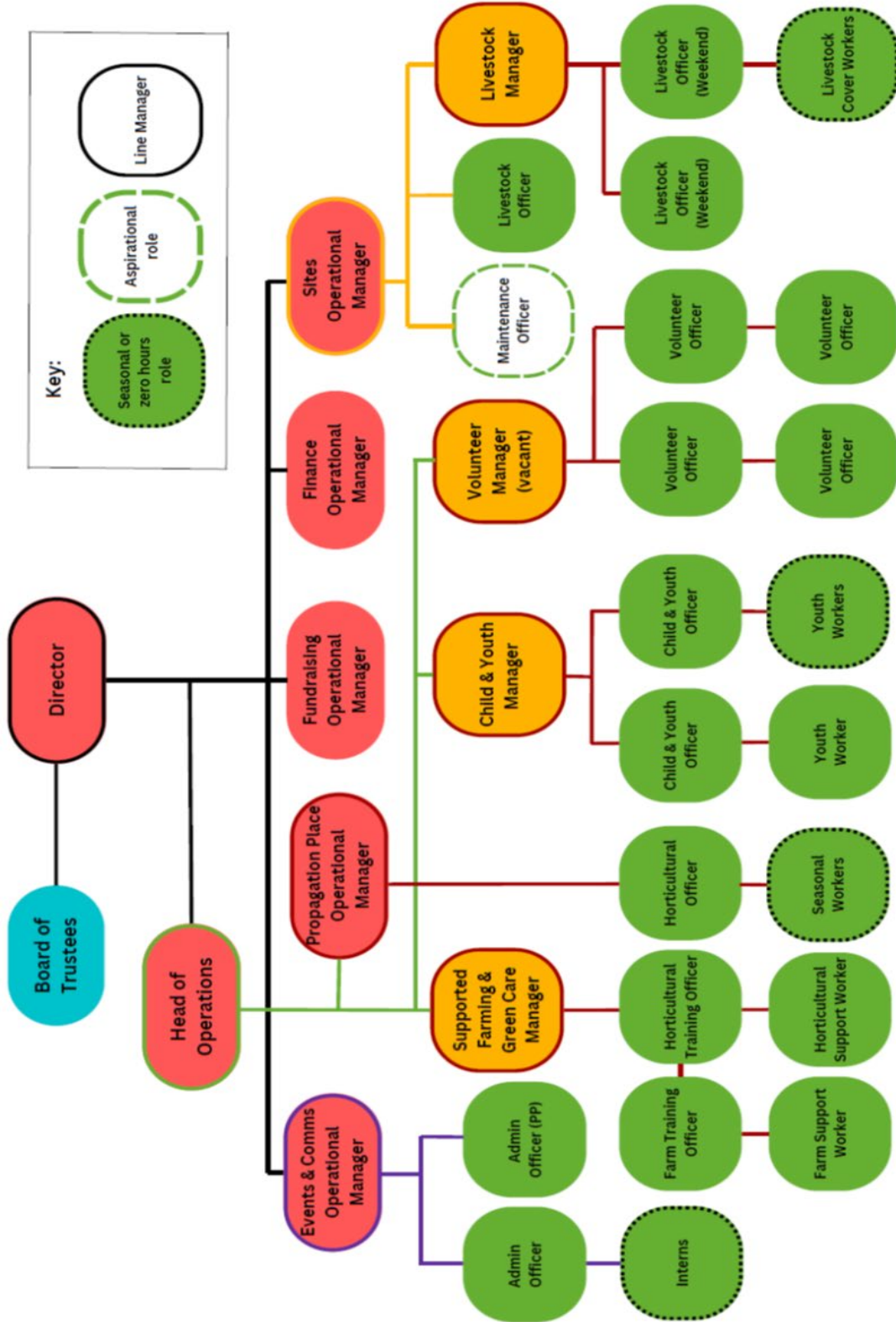
1. Get in touch to say you're interested;
2. If there's a place, send us a simple application with your contact info, a letter about why you want to join, and a CV;
3. We'll review your application and may invite you to observe meetings; and
4. If it feels right for both of us, you'll join as a trustee after a quick membership process and background check.

We welcome people from all backgrounds and experiences. If you want to help shape a stronger, supportive community, we'd love to hear from you!

St. Werburghs City Farm

Report of the trustees

For the year ended 31 March 2025



St. Werburghs City Farm

Report of the trustees

For the year ended 31 March 2025

Finance & decision-making procedure

This policy is available in full on request.

1. General points

The purpose of this decision making and financial procedure is to ensure:

- The efficient and effective delivery of services;
- That staff and trustees are aware of their responsibilities;
- The maintenance of proper and accurate accounts;
- That there are adequate systems of control to minimise the risk of irregularities;
- Give the Director/Operational Managers enough freedom to carry out the day-to-day management of the Farm without involving the Board;
- Ensure that the Board can concentrate on high-risk and strategic decisions; and
- Allow decisions to be made promptly, and outside Board meetings when necessary.

2. Decisions about finance

- (1) The Director(s) can authorise expenditure which has been anticipated in the annual budget, except if one or more of the following conditions apply:
 - The expenditure exceeds £5,000;
 - The expenditure exceeds 50% of the funding available in the budget line at the start of the financial year; and
 - The expenditure will create cash-flow problems (for instance, because the funding to support the expenditure will not be released until the money is spent).
- (2) The Director(s) can authorise expenditure which is not budgeted for, and which therefore draws on reserves, of £1,500 or less. All expenditure which draws on reserves should be reported to the Board of Trustees for information. This cannot exceed £3,000 within a four week period; and
- (3) In cases other than those above, the expenditure cannot be authorised by the Director(s) alone, but should be referred to the Trustees. If a decision is required urgently, approval may be given by the Chair or the Treasurer and one other Trustee. Such decisions should be recorded in writing, and reported to the Board of Trustees for information.

Memberships & Networks

- ASDAN
- Care Farming UK
- Social Farms & Gardens
- Voscur

St. Werburghs City Farm

Report of the trustees

For the year ended 31 March 2025

Key Partnerships

- ACH
- Bristol Beer Factory – Brewed to Give
- Bristol MIND
- Changes Bristol
- Children’s Scrapstore
- IAPT
- Imayla
- Inner City & East Bristol Locality Partnership
- NHS Bristol, North Somerset and South Gloucestershire Integrated Care Board
- St Mungos
- St Werburghs Community Centre
- The City Farm Café
- The Duke of York
- St Pauls Partners

Pay setting criteria

SWCF aims to align pay scales with National Joint Council for Local Government Services (NJC). NJC is based on a 37 hour working week, whereas SWCF works a 35 hour week, so alignment is not exact.

SWCF aims to award annual increments to all staff who have been contracted in their current role for more than 12 months. Annual increments were awarded in April 2024.

SWCF aims to award a percentage pay increase across all scales from December each year, following recommendations from NJC, however this is dependent on fundraising and projected year end. The trustees did not award a pay increase in December 2024.

Objectives & Activities

Who we are

St Werburghs City Farm is an inner-city community hub for land-based opportunities. Situated 1.5 miles from Bristol city-centre, we manage more than 18 acres of green space including a 2-acre small holding, a 1-acre community garden, a 2.5-acre conservation site and 13 acres of community allotments. We understand the importance that green space has for our collective health and wellbeing, which is why all our work is based on strengthening the connections between land, animals and people. We know that enjoyment of green space, access to local food and opportunities in the agricultural sector are not equal, and we are committed to addressing this imbalance in our work. We appreciate that everyone has skills, experience and assets to share, which is why we base our approach on co-design and delivery, with and for our community. We also recognise that inequalities exist in our community and our city, which is why we target our work at those experiencing mental ill-health, disadvantage and/or marginalisation.

We are working to create a future where communities grow, green spaces flourish, and together we thrive.

St. Werburghs City Farm

Report of the trustees

For the year ended 31 March 2025

How we achieve our aims

Using diverse urban green spaces, we offer community services that aim to:

Strengthen connections between land, animals and people by:

- Maintaining and sharing accessible green spaces;
- Exploring the therapeutic benefits of animals, plants, and green spaces; and
- Offering educational opportunities to gather skills and experiences.

Be a beacon for small-scale urban farming and community food growing by:

- Aiming for the highest standards of ethical farming practices;
- Supporting local food networks through growing seasonal plants and produce; and
- Providing practical opportunities in food growing, animal care, and conservation.

Make space to share experience and collaborate by:

- Providing inclusive access to our sites, resources, and services;
- Co-creating opportunities to share skills and experiences; and
- Working in partnerships that lift our communities up.

Nourish communities by sharing local, seasonal food together by:

- Telling the story of where food comes from;
- Bringing people together to grow, cook, and feast; and
- Celebrating communities through seasonal events and activities.

Respond to emerging environmental and social needs within our community by:

- Developing abilities that enable the Farm to adapt with our changing world;
- Welcoming challenging conversations that inspire courageous changes to the way we work; and
- Reflecting and learning as a team and sharing our experiences.

Our services, which develop depending on the needs of our community, include: supported training placements for adults with learning difficulties, alternative curriculum placements for young people struggling in mainstream education, nature connection sessions for adults experiencing mental-ill health, woodland play for children experiencing anxiety, propagation sessions in our social enterprise, and partnership sessions to increase engagement of communities underrepresented in our services, agriculture and/or outdoor engagement.

St. Werburghs City Farm

Report of the trustees

For the year ended 31 March 2025



Impact and performance

Skills & Wellbeing for Volunteers

The Skills & Wellbeing project provides opportunities for adults to be part of meaningful, important activities that benefit the community. The project is designed for people experiencing mental ill-health, marginalisation or isolation, and offers a range of weekly sessions including cooking, animal care, landscaping & conservation, gardening plus a drop-in session.

News from the year:

- The Skills & Wellbeing project directly supported 102 volunteer participants through 218 sessions. Volunteers attended an average of 8 sessions each;
- 63% of participants describe themselves as recovering from a mental health condition and 50% as having a health condition or disability;
- The project is now part funded by Inner City & East Bristol Locality Partnership, enabling the team to collaborate with a network of local green social prescribing providers and other community services supporting adults;
- During the year, lots of brilliant projects undertaken by our volunteers. They have created a new picnic area, built new animal enclosures, repaired steps, planted trees, built a shelter for a life-size model milking cow, finished the outdoor kitchen, built new planters and grown flowers, vegetables and herbs;
- The project has launched a new weekly Gardening session on Tuesdays. This session is supported by an experienced facilitator and focuses on creating a nurturing environment and sharing the benefits of being in nature and contributing to a shared garden; and
- Finance summary: The Skills & Wellbeing project has been supported by two large, multiyear grants this year which has enabled a small surplus, allowed the team to invest in its development with confidence and made a huge difference to its impact.

Words from a project participant: *'I felt very depressed and lonely before being referred to The Farm by NHS Talking Therapies. I didn't want to go out, be with people, or do anything. Since being here, I feel a sense of purpose, and I have grown in confidence. Now I've finished my sessions and my mental health is much better, I volunteer at the Farm supporting others. I love helping other people come out of their shell and seeing them benefit like I did. Especially coming from a different country, the Farm is a great place to connect with people and feel part of a joyful community.'*

St. Werburghs City Farm

Report of the trustees

For the year ended 31 March 2025



Supported Farming & Green Care

The Farm's longest standing project, Supported Farming & Green Care provide day opportunities for adults with learning disabilities who join the team to care for the animals and tend to our vegetable gardens. With up to six participants joining us each day, this project aims to be empowering, confidence-building and fun, focusing on transferable skills to help grow and maintain independence and support each individual towards their personal goals.

News from the year:

- 25 participants attended 500 half or full day sessions;
- A brand new ramp was installed which has made access to our cabin much easier for people with mobility impairments;
- The community garden paths, rails, walls and beds have had a wonderful makeover, making it easier for disabled gardeners to tend, as well as deterring birds and bugs from eating our harvest!;
- The numbers of participants who bring a support worker to sessions has increased, which can make it tricky to accommodate the larger group indoors for a social lunch together;
- The new wildlife pond next to the cabin has proved a great place for participants to go for a bit of peace and quiet and to spot wildlife. Some participants have been learning with the team about how to maintain a healthy pond;
- The group are now selling their vegetable harvests through the Farm shop with a new display fridge. The team sold bags of mixed salad throughout the winter, all of which has been grown, harvested, weighed, bagged and labelled by the participants; and
- Finance summary: This project has remained difficult to fund, with rates awarded through local tender processes only covering around 2/3 of the cost of delivery. Many trusts who have previously funded this work have refocused away from adult learning disability services, or closed, leaving a hole in our funding model for this project which we need to address next year.

St. Werburghs City Farm

Report of the trustees

For the year ended 31 March 2025

Words from a project participant: *'Spending time with the animals makes me feel like a part of a family'*



Child & Youth

The Child & Youth project provides hands-on, welcoming and unique opportunities for young people to learn, play and grow their wellbeing. The project offers a wide range of long and short term opportunities for young people who are having a difficult time or facing barriers to education or being outdoors, including: Alternative provision for young people struggling at school or with their mental health, 1-1 and small group sessions on the Farm for children with additional needs, forest school and outdoor play camps during school holidays, youth clubs for neurodiverse teenagers, farm visits and forest school for local school groups.

St. Werburghs City Farm

Report of the trustees

For the year ended 31 March 2025

News from the year:

- The Child & Youth project has worked directly with 1,255 young people this year;
- There has been challenges associated with lots of change in the staff team, but this has enabled us to consolidate key roles and appoint two new full-time roles which has strengthened the team and delivery;
- As well as maintaining our offerings, the project manager has been focusing on developing our systems for handling referrals, supporting each individual young person, and developing new systems to support learning. We are already seeing the impact in sessions which feel calmer and more structured;
- The team successfully piloted a new 'Unsocial Club' responding to the rising number of young people out of school and struggling with isolation, many of whom are neurodiverse and needing support with social interaction skills;
- The popular 'City Farmers Club' was a success and we plan to run both clubs again soon;
- It was great to develop our relationships with other organisations by running sessions together, including: Empire Fighting Chance, ACE at Docklands and the Green house; and
- Finance summary: The project has benefited from one larger multiyear grant, and lots of smaller grants this year. The project also raises income from schools, and we have seen places full across the year. The project has ended the year with a small surplus.

Words from a project participant: *'Mondays are always my favourite day because it's a Farm day!'*



Propagation Place

Propagation Place is a social enterprise and community project that grows and delivers vegetable seedlings across the UK. The project aims to provide hands-on opportunities for training in food production, whilst also earning sustainable income to support our charitable work. Propagation Place is situated on three plots within the 13 acres of allotments that the Farm manages on behalf of our local council. In a large polytunnel we have raised tens of thousands of seedlings for sale to local residents - and online nationwide.

St. Werburghs City Farm

Report of the trustees

For the year ended 31 March 2025

News from the year:

- Nearly 1,500 local and nationwide customers bought vegetable seedlings (with over 900 new customers this year). Sales were up for another consecutive year;
- We brought home approx. £7.5k from the Malvern Flower Show and a 4-Flower Award from the RHS for our garden exhibit;
- We expanded our local plug plant sales at the on-site Farm Shop;
- The Propagation Place traineeship programme was a huge success, with trainees reporting high levels of satisfaction with the syllabus, the learning experience and the confidence building! Trainees and seasonal staff went on to jobs and further education in the sector, quoting their time at Propagation Place as instrumental in this process;
- The Lead Volunteer programme has enabled more experienced volunteers to progress, helping run sessions and support new volunteers;
- The project hosted UWE Business and Marketing students who put together a comprehensive 3-year business plan for the project;
- The project made and strengthened connections with local organisations such as Empire Fighting Chance, St Werburghs Picnic in the Park, TEMWA, St Paul's Learning Centre, St Werburghs Community Centre, Malcolm X Community Centre and several local schools; and
- Finance summary: Trading income has continued to steadily rise and the project has benefited from two large grants, and one smaller one. The spring and summer growing seasons have required significant additional staffing capacity to keep up with orders, and this needs significant investment next year.

Words from a project participant: *'It's definitely been good for my mental health. Such a beautiful place to work. Even when it's miserable and cold it's still great to be outside. Peace and perspective.'*



St. Werburghs City Farm

Report of the trustees

For the year ended 31 March 2025

Space to Grow

We believe that we can have a greater impact by working with other people that are experts in their field or rooted in their community. This is why we have developed our 'Space to Grow' Partnerships Programme which offers low-cost site hire, collaborative project design and delivery, and 12-24 month residencies at the Farm. As a response to the findings of the 2020 Equity project and 2021 Advocacy project, Space to Grow enables people who need specialist support to benefit from the spaces we offer and to get to know the Farm and our services.

News from the year:

- Through Space to Grow, the Farm has partnered with 13 organisations and supported 392 participants through 224 sessions;
- This has included: ACH, Black2Nature, Brandon Trust, Changes Bristol, Imayla, Mankind, A Band Of Brothers, Journeyman, Men Against Patriarchy, Learning Partnership West, KIN, St Mungos, and more;
- Space to Grow has developed and supported exciting new projects including: community feasts for people affected by overseas conflict; Black2Nature engaging ethnic minority children in Farm life; nature-based ESOL sessions for migrants; cooking sessions for refugees living in Bristol hotels, and more;
- Working with the team at Propagation Place, the community garden hosted Bristol Mind attendees who benefitted from garden produce grown by volunteers for their weekly cooking sessions; and
- Finance summary: This project requires lighter touch staffing in order to coordinate the provision offered. The Farm has funded this activity through core costs and by aiming to make spaces available when they are not otherwise in use. Going forward, funding support to fund the activities and enable more proactive outreach would benefit the project and its impact.

Words from a project participant: *'I have not seen anything like this group in Bristol before and it is very much needed'.*



St. Werburghs City Farm

Report of the trustees

For the year ended 31 March 2025

Public benefit statement

We believe that this report overwhelmingly demonstrates the public benefit of St Werburghs City Farm. The charity continues to deliver against its organisational objectives as described earlier in this report.

The Farm understands that the needs of the communities we serve change over time, and therefore we do develop and refine our services in response to what we learn. However, we believe that our current delivery model is the best use of our resources in terms of public benefit at this time.

Achievements and performance summary

Words from a Team Challenge participant: *'We dug holes. We built fences. We did some plumbing. We even built benches. But more than anything, we took time out of our lives to be in nature, to be with people, to be part of something real.'*

Project	Beneficiaries	Secondary beneficiaries	Visitors, Customers & Event Attendees
Supported Farming & Green Care	25 participants	50 participant family members (1:2)	500 customers eating local food grown by target Beneficiaries
Propagation Place	7 Trainees 7 Placement students 8 Incredible Edible Students	16 trainee family members (1:2)	1,500 customers buying sustainably grown plug plants
Child & Youth	1,255 participants	5,020 participant family members (1:4)	
Volunteer & Wellbeing	120 participants	240 participant family members (1:2)	
Space to Grow & Community Events	441 Participants 88 Community event volunteers	13 partner organisations (estimated 5 people per organisation) resulting in 65 people.	5,960 Community event attendees
Sites & Livestock Project	51 Student Participants 624 Team Challenge Participants	102 student family members (1:2)	300 Farm Shop customers
Farm Visitors			50,000 Visitors to the Farm sites
Total	2,626 direct service beneficiaries	5,493 indirect beneficiaries	58,260 Visitors, Customers & Event Attendees

St. Werburghs City Farm

Report of the trustees

For the year ended 31 March 2025

Equity progress

The Farm has continued to track our progress towards our Equity objectives, following the launch of a programme of work in 2020 to improve equity and diversity at the Farm. As well as making progress against existing objectives, we have continued to add new ones based on discussions at meetings and during training sessions.

Key progress this year:

- All staff participated in EDI training;
- A detailed accessibility audit of our sites was carried out by consultants with lived experience and the resulting report's recommendations are informing site developments;
- EDI representative is nominated for every manager meeting and trustee meeting;
- Staff recruitment procedure has been reviewed and changes made to enable applications in different formats where role doesn't rely on written communication;
- Task group convened to take the lead on improving EDI in recruitment further; and
- Space to Grow project is now being managed as its own project and is reported on above.



Fundraising performance

- Fundraising has been relatively successful this year, but income generation remains a central challenge and threat to the future of the Farm and its services;
- The Farm created a new Fundraising Manager this year and Martha Robbins joined the team in August 2024. This has enabled a strategic focus on fundraising which has previously been intermittent due to the fundraising function sitting with the directors;
- This year has seen reviews of onsite and online donations and trialling of different communications and approaches to increase individual giving, which has shown positive results;

St. Werburghs City Farm

Report of the trustees

For the year ended 31 March 2025

- The Farm ran a successful match funding campaign for Christmas which met its target and was used as an opportunity to get to know more of our donors and better understand motivations for giving. This has proved useful in planning a spring match funding campaign;
- Although we have returned a small deficit this year, this has relied on one-off filming on location payments which are unlikely to be a reliable source of annual income to this extent;
- The Farm has benefitted from three larger multiyear grants secured in previous years, and grants of this type remain absolutely critical to the sustainability of the Farm and its services. We are hugely grateful to all the trusts and foundations who have awarded grants to the Farm for the delivery of services, the development of the charity or the improvement of our sites. We would like to extend a special thank you to those who have provided multi-year support;
- Core costs are a central challenge for fundraising and we are therefore particularly grateful to awards which are unrestricted, or which include a core cost contribution; and
- We would like to thank every person and every organisation who has enabled our work through a grant, sponsorship, through your custom or by making a donation. Your collective support has sustained the Farm throughout the year.

External challenges

The Farm is vulnerable to a wide range of externally influenced challenges, as are all organisations to a greater or lesser extent. The following challenges are recognised as particularly relevant this year and in the near future:

- Economic instability continues to impact the Farm in various ways. Our costs have risen across the board, and the ability of our participants, customers and the public sector to pay more has not kept pace, leaving a potential gap in our income generation;
- As some Farm buildings near the end of their useful life, they become more vulnerable to vandalism, break-in and extreme weather. This increases the need for the redevelopment of some of our spaces; and
- As the UK begins to experience the impacts of climate change, the way we use our sites has to change. As an example, we had had to close our Supported Farming & Green Care service on four occasions this year due to the health risks of extreme heat on our vulnerable participants. We anticipate that climate and weather events will have an increasing impact on our sites and services. This can only be partly mitigated by the redevelopment of some of our spaces.

Key priorities for 2025-26

▪ Redeveloping our spaces

The Farm's office, café and community building are in need of retrofit or replacement in order to remain fit for purpose and suitable for our communities long term. The Farm are working with local architects to develop a masterplan for the main Farm site. The masterplan will be informed by all the previous relevant studies, consultations and designs for the site and staff will play a key role in shaping the high-level strategy for the redevelopment of the Farm's key spaces. The masterplan will then guide a detailed community consultation to refine the priorities and design criteria, due to be carried out in summer 2025.

The Farm has been awarded funding to support the masterplan process and is applying for additional funding to carry out the community consultation and to commission a series of technical surveys of the buildings and grounds. Once complete, these outputs will need to inform a design.

St. Werburghs City Farm

Report of the trustees

For the year ended 31 March 2025

▪ Celebrating with our communities

The Farm are looking for ways to bring together our communities to eat and celebrate together in more inclusive ways. We have been awarded funding through the Space to Grow project to deliver a series of community feasts aimed at participants who have accessed the Farm via a Space to Grow partnership. This will culminate in a larger autumn feast which will also welcome partner organisations and their participants to share knowledge and opportunities relating to green social prescribing and other related community services.

▪ Refining our organisational systems

There is ongoing work to refine our organisational systems this year with the aim of supporting effective delivery and creating efficiencies to free up staff time. A key for this is around the monitoring of our services and tracking of our impact as an organisation, and 2025-26 will see the implementation of a new system which will bring together all of the data we routinely collect and make reporting a more streamlined process. We are also looking to explore software solutions to support our bookkeeping functions, for instance to save time processing expenses and paying invoices.

▪ Balancing our budgets

With cost rises across the board and many trusts and foundations closing, it is essential that the Farm reviews the sustainability of all of its activities this year and puts in place realistic changes where needed to secure sustainability. This must include a review of pricing for services which are funded per individual, as well as pricing for use of our sites and spaces. If particular activities are becoming difficult to fund, despite previous efforts, then the Farm must consider how it can prioritise delivering its objectives in a sustainable way, and this may need to result in some significant changes in activities. We recognise the national trend towards major donors providing an increasing share of charitable income, at the same time as monthly giving of small donations is decreasing. With this in mind, during this year the Farm will welcome donors to at least one event to thank them in person. We will also be formalising our legacy programme.

Financial review

During the year 2024-25:

- The Farm's income increased as a result of:
 - Some positive fundraising results including some diversification of fundraising channels;
 - Additional income from filming on location;
 - The majority of places being full at all times across all services;
 - Propagation Place plant sales continuing to steadily increase;
 - Farm events raising increased income; and
 - Costs being carefully managed and salaried staff providing cover where possible, rather than paying for additional hours.
- Despite having successfully covered our costs, without the windfall of a major location filming contract, the Farm would have ended the year with a deficit; and
- With this in mind, it is essential that in 2025-26 The Farm sees further increases to unrestricted income in order to ensure that free reserves can be replenished further.

Reserves

The Trustees have established a reserves policy to ensure that the Charity can continue to operate effectively and meet its obligations, even in times of financial uncertainty. The policy states that the Charity should aim to hold minimum unrestricted funds not committed or invested in tangible fixed assets (the "free reserves") equivalent to at least three months of core operating costs.

St. Werburghs City Farm

Report of the trustees

For the year ended 31 March 2025

The trustees note that since the last policy was drafted, there has been an increase in the operational running costs of the charity, and that in an ideal scenario the designated fund held would increase. However, in light of ongoing financial uncertainties, the Trustees have opted to maintain the reserves level at £107k, which continues to be held within a designated fund on the Charity's balance sheet.

The Trustees acknowledge that this leaves approximately £30k of unrestricted funds available at the 2024- 2025 financial year end. However, it is important to note that the farm is currently projecting a deficit for the 2025 - 2026 financial year. Whilst the charity is actively seeking to mitigate this through additional grant receipts and reductions in operational costs, the trustees wish to ensure a level of unrestricted funds are available for use if required.

The reasons for the forecasted deficit are:

- Grant funding has become increasingly competitive and less predictable;
- The Charity has seen a significant drop in earned income from filming and location hire; and
- Operating costs have risen, including energy, insurance, and national insurance contributions.

Designated Funds are to act as contingency only and is not part of the allocated annual budget.

With this reserves policy in place, the Trustees feel that the current activities of the Charity could continue in the event of a significant drop in funding or if unplanned expenditure had to occur to maintain the health and safety of the Farm and its visitors.

Statement of responsibilities of the trustees

The trustees (who are also directors of the charity for the purposes of company law) are responsible for preparing the trustees' report and the financial statements in accordance with applicable law and United Kingdom Accounting Standards, including Financial Reporting Standard 102: The Financial Reporting Standard applicable in the UK and Republic of Ireland (United Kingdom Generally Accepted Accounting Practice).

Company law requires the trustees to prepare financial statements for each financial year, which give a true and fair view of the state of affairs of the charity and of the income and expenditure of the charity for that period. In preparing those financial statements the trustees are required to:

- select suitable accounting policies and then apply them consistently;
- observe the methods and principles in the Charities SORP;
- make judgements and accounting estimates that are reasonable and prudent;
- state whether applicable UK accounting standards and statements of recommended practice have been followed, subject to any material departures disclosed and explained in the financial statements; and
- prepare the financial statements on the going concern basis unless it is inappropriate to presume that the charity will continue in operation.

The trustees are responsible for keeping proper accounting records which disclose with reasonable accuracy at any time the financial position of the charity and which enable them to ensure that the financial statements comply with the Companies Act 2006. The trustees are also responsible for safeguarding the assets of the charity and hence for taking reasonable steps for the prevention and detection of fraud and other irregularities.

St. Werburghs City Farm

Report of the trustees

For the year ended 31 March 2025

The trustees confirm that to the best of their knowledge there is no information relevant to the audit of which the independent examiners are unaware. The trustees also confirm that they have taken all necessary steps to ensure that they themselves are aware of all relevant examination information and that this information has been communicated to the independent examiners.

Members of the charity guarantee to contribute an amount not exceeding £1 to the assets of the charity in the event of winding up. The trustees are members of the charity but this entitles them only to voting rights. The trustees have no beneficial interest in the charity.

Independent examiners

Godfrey Wilson Limited were re-appointed as independent examiners to the charitable company during the year and have expressed their willingness to continue in that capacity.

Approved by the trustees on 6 October 2025 and signed on their behalf by

JL Barker

Jacqueline Barker
Chair

Independent examiner's report

To the trustees of

St. Werburghs City Farm

I report to the trustees on my examination of the accounts of St. Werburghs City Farm (the charitable company) for the year ended 31 March 2025, which are set out on pages 22 to 41.

Responsibilities and basis of report

As the trustees of the charitable company (and also its directors for the purposes of company law) you are responsible for the preparation of the accounts in accordance with the requirements of the Companies Act 2006 ('the 2006 Act').

Having satisfied myself that the accounts of the charitable company are not required to be audited under Part 16 of the 2006 Act and are eligible for independent examination, I report in respect of my examination of the charitable company's accounts as carried out under section 145 of the Charities Act 2011 ('the 2011 Act'). In carrying out my examination I have followed the Directions given by the Charity Commission under section 145(5) (b) of the 2011 Act.

Independent examiner's statement


Since the charitable company's gross income exceeded £250,000 your examiner must be a member of a body listed in section 145 of the 2011 Act. I confirm that I am qualified to undertake the examination because I am a member of the Institute of Chartered Accountants in England and Wales (ICAEW), which is one of the listed bodies.

Godfrey Wilson Limited also provides payroll and consultancy services to the charitable company. I confirm that as a member of the ICAEW I am subject to the FRC's Revised Ethical Standard 2016, which I have applied with respect to this engagement.

I have completed my examination. I confirm that no material matters have come to my attention in connection with the examination giving me cause to believe that in any material respect:

- (1) accounting records were not kept in respect of the charitable company as required by section 386 of the 2006 Act; or
- (2) the accounts do not accord with those records; or
- (3) the accounts do not comply with the accounting requirements of section 396 of the 2006 Act other than any requirement that the accounts give a 'true and fair view' which is not a matter considered as part of an independent examination; or
- (4) the accounts have not been prepared in accordance with the methods and principles of the Statement of Recommended Practice for accounting and reporting by charities applicable to charities preparing their accounts in accordance with the Financial Reporting Standard applicable in the UK and Republic of Ireland (FRS 102).

I have no concerns and have come across no other matters in connection with the examination to which attention should be drawn in this report in order to enable a proper understanding of the accounts to be reached.



Date: 6 October 2025

Robert Wilson FCA

Member of the ICAEW

For and on behalf of:

Godfrey Wilson Limited

Chartered accountants and statutory auditors

5th Floor Mariner House

62 Prince Street

Bristol, BS1 4QD

St. Werburghs City Farm

Statement of financial activities *(incorporating an income and expenditure account)*

For the year ended 31 March 2025

	Note	Restricted £	Unrestricted £	2025 Total £	2024 Total £
Income from:					
Donations and legacies	3	-	60,101	60,101	49,703
Charitable activities	4	317,924	201,812	519,736	423,033
Other trading activities	5	-	182,830	182,830	153,499
Investments		-	2,287	2,287	2,077
Total income		<u>317,924</u>	<u>447,030</u>	<u>764,954</u>	<u>628,312</u>
Expenditure on:					
Raising funds		-	50,076	50,076	25,239
Charitable activities		<u>315,643</u>	<u>401,265</u>	<u>716,908</u>	<u>646,857</u>
Total expenditure	7	<u>315,643</u>	<u>451,341</u>	<u>766,984</u>	<u>672,096</u>
Net income / (expenditure)	8	2,281	(4,311)	(2,030)	(43,784)
Transfers between funds		<u>252</u>	<u>(252)</u>	<u>-</u>	<u>-</u>
Net movement in funds		2,533	(4,563)	(2,030)	(43,784)
Reconciliation of funds:					
Total funds brought forward		<u>49,874</u>	<u>424,169</u>	<u>474,043</u>	<u>517,827</u>
Total funds carried forward		<u><u>52,407</u></u>	<u><u>419,606</u></u>	<u><u>472,013</u></u>	<u><u>474,043</u></u>

All of the above results are derived from continuing activities. There were no other recognised gains or losses other than those stated above. Movements in funds are disclosed in Note 17 to the accounts.

St. Werburghs City Farm

Balance sheet

As at 31 March 2025

	Note	£	2025 £	2024 £
Fixed assets				
Tangible assets	11		281,979	306,343
Current assets				
Stock	12	8,479		7,372
Debtors	13	22,805		54,997
Cash at bank and in hand		216,462		176,394
		247,746		238,763
Liabilities				
Creditors: amounts falling due within 1 year	14	(57,712)		(71,063)
Net current assets			190,034	167,700
Net assets	16		472,013	474,043
Funds	17			
Restricted funds			52,407	49,874
Unrestricted funds				
Designated funds			107,426	107,426
Capital fund			281,979	306,343
General funds			30,201	10,400
Total charity funds			472,013	474,043

The directors are satisfied that the company is entitled to exemption from the provisions of the Companies Act 2006 (the Act) relating to the audit of the financial statements for the year by virtue of section 477(2), and that no member or members have requested an audit pursuant to section 476 of the Act.

The directors acknowledge their responsibilities for:

- (i) ensuring that the Company keeps proper accounting records which comply with section 386 of the Act; and
- (ii) preparing financial statements which give a true and fair view of the state of affairs of the Company as at the end of the financial year and of its profit or loss for the financial year in accordance with the requirements of section 393, and which otherwise comply with the requirements of the Act relating to financial statements, so far as applicable to the company.

These accounts have been prepared in accordance with the special provisions applicable to companies subject to the small companies' regime.

Approved by the trustees on 6 October 2025 and signed on their behalf by

JL Barker

Jacqueline Barker, Chair of Trustees

St. Werburghs City Farm

Statement of cash flows

For the year ended 31 March 2025

	2025 £	2024 £
Net movement in funds	(2,030)	(43,784)
Adjustments for:		
Depreciation charges	24,364	24,281
Dividends, interest and rents from investments	(2,287)	(2,077)
(Increase) / decrease in stock	(1,107)	2,062
Increase in debtors	32,192	(32,383)
Increase in creditors	(13,351)	6,110
Net cash used in operating activities	37,781	(45,791)
Cash flows from investing activities:		
Dividends, interest and rents from investments	2,287	2,077
Purchase of fixed assets	-	(2,100)
Net cash provided by / (used in) investing activities	2,287	(23)
Increase / (decrease) in cash and cash equivalents in the year	40,068	(45,814)
Cash and cash equivalents at the beginning of the year	176,394	222,208
Cash and cash equivalents at the end of the year	216,462	176,394

St. Werburghs City Farm

Notes to the financial statements

For the year ended 31 March 2025

1. Accounting policies

a) Basis of preparation

St. Werburghs City Farm is a charitable company limited by guarantee registered in England and Wales. The registered office address is Watercress Road, St. Werburghs, Bristol, BS2 9YJ.

The financial statements have been prepared in accordance with Accounting and Reporting by Charities: Statement of Recommended Practice applicable to charities in preparing their accounts in accordance with the Financial Reporting Standard applicable in the UK and Republic of Ireland (FRS 102) (effective 1 January 2019) - (Charities SORP (FRS 102)), the Financial Reporting Standard applicable in the UK and Republic of Ireland (FRS 102) and the Companies Act 2006.

St. Werburghs City Farm meets the definition of a public benefit entity under FRS 102. Assets and liabilities are initially recognised at historical cost or transaction value unless otherwise stated in the relevant accounting policy notes.

b) Going concern basis of accounting

The accounts have been prepared on the assumption that the charity is able to continue as a going concern, which the trustees consider appropriate having regard to the current level of unrestricted reserves. There are no material uncertainties about the charity's ability to continue as a going concern.

c) Income

Income is recognised when the charity has entitlement to the funds, any performance conditions attached to the items of income have been met, it is probable that the income will be received and the amount can be measured reliably.

Income from the government and other grants, whether 'capital' grants or 'revenue' grants, is recognised when the charity has entitlement to the funds, any performance conditions attached to the grants have been met, it is probable that the income will be received and the amount can be measured reliably and is not deferred.

For legacies, entitlement is taken as the earlier of the date on which either: the charity is aware that probate has been granted, the estate has been finalised and notification has been made by the executors to the Trust that a distribution will be made, or when a distribution is received from the estate. Receipt of a legacy, in whole or in part, is only considered probably when the amount can be measured reliably and the charity has been notified of the executor's intention to make a distribution. Where legacies have been notified to the charity, or the charity is aware of the granting of probate, and the criteria for income recognition have been met, then the legacy is treated as a contingent asset and disclosed if material.

Income received in advance of the provision of services is deferred until criteria for income recognition are met.

d) Donated services and facilities

Donated professional services and donated facilities are recognised as income when the charity has control over the item, any conditions associated with the donated item have been met, the receipt of economic benefit from the use by the charity of the item, is probable and the economic benefit can be measured reliably. In accordance with the Charities SORP (FRS 102), general volunteer time is not recognised.

St. Werburghs City Farm

Notes to the financial statements

For the year ended 31 March 2025

1. Accounting policies (continued)

d) Donated services and facilities (continued)

On receipt, donated professional services and donated facilities are recognised on the basis of the value of the gift to the charity which is the amount the charity would have been willing to pay to obtain services or facilities of equivalent economic benefit on the open market; a corresponding amount is then recognised in expenditure in the period of receipt.

e) Interest receivable

Interest on funds held on deposit is included when receivable and the amount can be measured reliably by the charity: this is normally upon notification of the interest paid or payable by the bank.

f) Funds accounting

Unrestricted funds are available to spend on activities that further any of the purposes of the charity. Designated funds are unrestricted funds of the charity which the trustees have decided at their discretion to set aside to use for a specific purpose. Restricted funds are donations which the donor has specified are to be solely used for particularly areas of the charity's work or for specific projects being undertaken by the charity.

Restricted funds for the purpose of purchasing or constructing fixed assets are transferred to unrestricted funds if the restriction has been discharged by the purchase or construction of the asset.

g) Expenditure and irrecoverable VAT

Expenditure is recognised once there is a legal or constructive obligation to make a payment to a third party, it is probable that settlement will be required and the amount of the obligation can be measured reliably.

Irrecoverable VAT is charged as a cost against the activity for which the expenditure was incurred.

h) Allocation of support costs

Support costs are those functions that assist the work of the charity but do not directly undertake charitable activities. These costs have all been allocated to charitable activities.

i) Tangible fixed assets

Depreciation is provided at rates calculated to write down the cost of each asset to its estimated residual value over its expected useful life. The depreciation rates in use are as follows:

Farm buildings	10 years straight line
Motor vehicles	4 years straight line
Land and buildings	25 years straight line

Items of equipment are capitalised where the purchase price exceeds £500.

No depreciation is provided on freehold land.

St. Werburghs City Farm

Notes to the financial statements

For the year ended 31 March 2025

1. Accounting policies (continued)

i) Tangible fixed assets (continued)

For capital items funded by restricted grants, if the restriction was discharged by the purchase or construction of the asset, the funds are transferred to unrestricted funds.

j) Stock

Stock is included at the lower of cost or net realisable value. Donated items of stock are recognised at fair value which is the amount the charity would have been willing to pay for the items on the open market.

k) Debtors

Trade and other debtors are recognised at the settlement amount due after any trade discount offered. Prepayments are valued at the amount prepaid net of any trade discounts due.

l) Cash at bank and in hand

Cash at bank and cash in hand includes cash and short term highly liquid investments with a short maturity of three months or less from the date of acquisition or opening of the deposit or similar account.

m) Creditors

Creditors and provisions are recognised where the charity has a present obligation resulting from a past event that will probably result in the transfer of funds to a third party and the amount due to settle the obligation can be measured or estimated reliably. Creditors and provisions are normally recognised at their settlement amount after allowing for any trade discounts due.

n) Financial instruments

The trust only has financial assets and financial liabilities of a kind that qualify as basic financial instruments. Basic financial instruments are initially recognised at transaction value and subsequently measured at their settlement value with the exception of bank loans which are subsequently recognised at amortised cost using the effective interest method.

o) Pension costs

The company operates a defined contribution pension scheme for its employees. There are no further liabilities other than that already recognised in the SOFA.

p) Accounting estimates and key judgements

In the application of the charity's accounting policies, the trustees are required to make judgements, estimates and assumptions about the carrying values of assets and liabilities that are not readily apparent from other sources. The estimates and underlying assumptions are based on historical experience and other factors that are considered to be relevant. Actual results may differ from these estimates.

The estimates and underlying assumptions are reviewed on an ongoing basis. Revisions to accounting estimates are recognised in the period in which the estimate is revised if the revision affects only that period, or in the period of the revision and future periods if the revision affects both current and future periods.

St. Werburghs City Farm

Notes to the financial statements

For the year ended 31 March 2025

1. Accounting policies (continued)

p) Accounting estimates and key judgements (continued)

The key sources of estimation uncertainty that have a significant effect on the amounts recognised in the financial statements are described below.

Depreciation

As described in note 1i to the financial statements, depreciation is provided at rates calculated to write down the cost of each asset to its estimated residual value over its expected useful life.

2. Prior period comparatives

	Restricted £	Unrestricted £	2024 Total £
Income from:			
Donations and legacies	-	49,703	49,703
Charitable activities	234,368	188,665	423,033
Other trading activities	-	153,499	153,499
Investments	-	2,077	2,077
Total income	234,368	393,944	628,312
Expenditure on:			
Raising funds	-	25,239	25,239
Charitable activities	239,923	406,934	646,857
Total expenditure	239,923	432,173	672,096
Net losses on investments	-	-	-
Net expenditure and net movement in funds	(5,555)	(38,229)	(43,784)

3. Income from donations and legacies

	2025 Total £	2024 Total £
Voluntary donations	60,101	49,703

All income from donations and legacies was unrestricted in the current and prior year.

St. Werburghs City Farm

Notes to the financial statements

For the year ended 31 March 2025

4. Income from charitable activities	Restricted £	Unrestricted £	2025 Total £
Grants > £10,000:			
The Baily Thomas Charitable Fund	10,000	-	10,000
BBC Children in Need	21,000	-	21,000
Bristol City Council (Community Asset Management)	21,290	-	21,290
Garfield Weston	25,000	-	25,000
Henry Smith Foundation	66,650	-	66,650
The National Lottery Community Fund	19,998	-	19,998
Bristol, North Somerset and South Gloucestershire			
Integrated Care Board	31,067	-	31,067
Oliver Ford Foundation	10,000	-	10,000
Quartet Community Foundation	21,978	-	21,978
Sirona Care and Health	12,500	-	12,500
Swire Charitable Trust	20,000	-	20,000
West of England Combined Authority (Community Pollinator Fund)	11,774	-	11,774
Grants < £10,000	<u>46,667</u>	<u>-</u>	<u>46,667</u>
Total grant income	317,924	-	317,924
Supported training placements	-	78,988	78,988
Horticultural and farm sales	-	66,493	66,493
Workshops	-	56,331	56,331
	<u>317,924</u>	<u>201,812</u>	<u>519,736</u>
Prior year comparative			2024
	Restricted £	Unrestricted £	Total £
Grants > £10,000:			
Edward Gostling Foundation	10,000	-	10,000
Ernest Cook Trust	14,951	-	14,951
Garfield Weston	25,000	-	25,000
Henry Smith Charitable trust	32,050	-	32,050
Nisbet Trust	15,000	-	15,000
Quartet Community Foundation	12,610	-	12,610
Spielman Trust	10,000	-	10,000
Veolia Environmental Trust	10,464	-	10,464
West of England Combined Authority	17,797	-	17,797
Grants < £10,000	<u>86,496</u>	<u>7,312</u>	<u>93,808</u>
Total grant income	234,368	7,312	241,680
Supported training placements	-	75,390	75,390
Horticultural and farm sales	-	54,608	54,608
Workshops	-	51,355	51,355
	<u>234,368</u>	<u>188,665</u>	<u>423,033</u>

St. Werburghs City Farm

Notes to the financial statements

For the year ended 31 March 2025

5. Income from other trading activities

	2025 Total £	2024 Total £
Allotments	15,180	13,786
Café rent and service charge	15,220	17,220
Farm fair	36,182	28,014
Film location hire	54,975	44,464
Memberships	2,441	2,425
Shop sales	3,357	4,024
Site hire	<u>55,475</u>	<u>43,566</u>
	<u><u>182,830</u></u>	<u><u>153,499</u></u>

All income from other trading activities was unrestricted in the current and prior year.

6. Government grants

The charitable company receives government grants, defined as funding from Bristol City Council, BBC Children in Need, National Lottery, NHS and The West of England Combined Authority (WECA) to fund charitable activities. In the prior year the charitable company received government grant funding from Bristol City Council, BBC Children in Need and WECA. The total value of such grants in the period ending 31 March 2025 was £105,129 (2024: £33,388). There are no unfulfilled conditions or contingencies attaching to these grants in the current or prior period.

St. Werburghs City Farm

Notes to the financial statements

For the year ended 31 March 2025

7. Total expenditure

	Raising funds £	Charitable activities £	2025 Total £
Staff costs (note 9)	20,180	498,925	519,105
Recruitment and training	-	15,117	15,117
Summer fair	18,781	-	18,781
Events and fundraising costs	8,873	-	8,873
Advertising	2,242	-	2,242
Printing, postage and stationery	-	14,477	14,477
Equipment hire	-	1,258	1,258
Computer expenses	-	9,939	9,939
Telephone	-	5,556	5,556
Consultancy, legal and professional	-	14,480	14,480
Accountancy fees	-	5,856	5,856
Sundry expenses	-	6,686	6,686
Rent and rates	-	11,659	11,659
Heat and light	-	17,132	17,132
Insurance	-	10,020	10,020
Site development	-	13,694	13,694
Repairs and maintenance	-	31,848	31,848
Travel	-	130	130
Health and safety	-	2,187	2,187
Bad debts	-	66	66
Volunteer and trustee expenses	-	665	665
Depreciation	-	24,364	24,364
Activity and project costs	-	32,849	32,849
	50,076	716,908	766,984

Total governance costs were £2,280 (2024: £2,160).

St. Werburghs City Farm

Notes to the financial statements

For the year ended 31 March 2025

7. Total expenditure (continued)

Prior year comparative

	Raising funds	Charitable activities	2024 Total
	£	£	£
Staff costs (note 9)	-	464,906	464,906
Recruitment and training	-	3,631	3,631
Summer fair	17,219	-	17,219
Events and fundraising costs	7,052	-	7,052
Advertising	968	-	968
Printing, postage and stationery	-	13,766	13,766
Equipment hire	-	1,588	1,588
Computer expenses	-	6,931	6,931
Telephone	-	5,735	5,735
Consultancy, legal and professional	-	6,019	6,019
Accountancy fees	-	5,455	5,455
Sundry expenses	-	5,424	5,424
Rent and rates	-	11,269	11,269
Heat and light	-	19,159	19,159
Insurance	-	7,757	7,757
Site development	-	12,358	12,358
Repairs and maintenance	-	23,016	23,016
Travel	-	1,316	1,316
Health and safety	-	3,820	3,820
Bad debts	-	171	171
Volunteer and trustee expenses	-	639	639
Depreciation	-	24,281	24,281
Activity and project costs	-	29,616	29,616
	<u>25,239</u>	<u>646,857</u>	<u>672,096</u>

St. Werburghs City Farm

Notes to the financial statements

For the year ended 31 March 2025

8. Net movement in funds

This is stated after charging:

	2025	2024
	£	£
Depreciation	24,364	24,281
Trustees' remuneration	Nil	Nil
Trustees' reimbursed expenses	112	13
Independent examiners' remuneration (excluding VAT):		
▪ Independent examination	1,900	1,800
▪ Other services	2,980	2,746
	<u>2,980</u>	<u>2,746</u>

Trustee reimbursed expenses relate to travel costs for 1 trustee (2024: governance costs for 1 trustee).

9. Staff costs and numbers

Staff costs were as follows:

	2025	2024
	£	£
Salaries and wages	440,695	389,562
Social security costs	19,016	20,588
Pension costs	13,148	11,781
Freelance staff	46,246	42,975
	<u>519,105</u>	<u>464,906</u>

No employee earned more than £60,000 during the current or prior year.

The key management personnel of the charitable company comprise the Trustees and the Directors. The total employee benefits of the key management personnel were £45,710 (2024: £62,568).

	2025	2024
	No.	No.
Average head count (FTE)	<u>14</u>	<u>14</u>

10. Taxation

The charity is exempt from corporation tax as all its income is charitable and is applied for charitable purposes.

St. Werburghs City Farm

Notes to the financial statements

For the year ended 31 March 2025

11. Tangible fixed assets

	Vehicles £	Farm buildings £	Land and buildings £	Total £
Cost				
At 1 April 2024	2,100	112,351	405,022	519,473
Additions	-	-	-	-
At 31 March 2025	<u>2,100</u>	<u>112,351</u>	<u>405,022</u>	<u>519,473</u>
Depreciation				
At 1 April 2024	438	91,512	121,180	213,130
Charge for the year	<u>525</u>	<u>7,638</u>	<u>16,201</u>	<u>24,364</u>
At 31 March 2025	<u>963</u>	<u>99,150</u>	<u>137,381</u>	<u>237,494</u>
Net book value				
At 31 March 2025	<u>1,137</u>	<u>13,201</u>	<u>267,641</u>	<u>281,979</u>
At 31 March 2024	<u>1,662</u>	<u>20,839</u>	<u>283,842</u>	<u>306,343</u>

12. Stock

	2025 £	2024 £
Livestock, deadstock and feed	<u>8,479</u>	<u>7,372</u>

13. Debtors

	2025 £	2024 £
Trade debtors	17,003	29,816
Prepayments	1,616	9,541
Accrued income	3,754	14,226
Other debtors	<u>432</u>	<u>1,414</u>
	<u>22,805</u>	<u>54,997</u>

St. Werburghs City Farm

Notes to the financial statements

For the year ended 31 March 2025

14. Creditors: amounts due within 1 year

	2025 £	2024 £
Trade creditors	5,604	18,394
Accruals	15,145	9,513
Deferred income (see note 16)	27,459	32,867
Other taxation and social security	6,499	5,103
Pension control account	-	2,410
Other creditors	3,005	2,776
	<u>57,712</u>	<u>71,063</u>

15. Deferred income

	2025 £	2024 £
At 1 April 2024	32,867	28,479
Deferred during the year	27,459	32,867
Released during the year	<u>(32,867)</u>	<u>(28,479)</u>
At 31 March 2025	<u>27,459</u>	<u>32,867</u>

Deferred income relates to income taken in advance for allotments, weddings and Propagation Place.

16. Analysis of net assets between funds

	Restricted funds £	Unrestricted funds £	Total funds £
Tangible fixed assets	-	281,979	281,979
Current assets	52,495	195,251	247,746
Current liabilities	<u>(88)</u>	<u>(57,624)</u>	<u>(57,712)</u>
Net assets at 31 March 2025	<u>52,407</u>	<u>419,606</u>	<u>472,013</u>
	Restricted funds £	Unrestricted funds £	Total funds £
Prior year comparative			
Tangible fixed assets	-	306,343	306,343
Current assets	49,962	188,801	238,763
Current liabilities	<u>(88)</u>	<u>(70,975)</u>	<u>(71,063)</u>
Net assets at 31 March 2024	<u>49,874</u>	<u>424,169</u>	<u>474,043</u>

St. Werburghs City Farm

Notes to the financial statements

For the year ended 31 March 2025

17. Movements in funds

Restricted funds	At 1 April	Income	Expenditure	Transfers	At 31 March
	2024				2025
	£	£	£	£	£
Awards for All	-	19,998	(9,998)	-	10,000
B&Q SFGC Ramp	5,000	-	(5,000)	-	-
Baily Thomas	-	10,000	(10,000)	-	-
Bath Spa Internships	-	2,723	(2,723)	-	-
Children in Need	9,000	21,000	(30,000)	-	-
Co-op Local Community Fund	-	5,000	(5,000)	-	-
Community Asset Management	-	21,290	(21,290)	-	-
D Oylly Carte Company	-	6,000	(6,000)	-	-
Ernest Cook Trust	11,987	-	(11,987)	-	-
Finnis Scott	-	1,500	(194)	-	1,306
Garfield Weston	-	25,000	(25,000)	-	-
Green Match Fund	2,472	-	(2,472)	-	-
HDH Wills	-	2,000	(2,000)	-	-
Henry Smith	7,205	66,650	(73,855)	-	-
ICE	-	43,567	(23,444)	-	20,123
Medlock	-	5,000	(5,000)	-	-
Nisbet Trust	12,559	-	(12,559)	-	-
Oak Foundation	-	7,953	(7,953)	-	-
Oliver Ford Foundation	-	10,000	(10,000)	-	-
Portishead Nautical	-	2,000	-	-	2,000
Quartet - Decking	1,000	-	(1,000)	-	-
Quartet - Seasonal Celebrations	-	4,978	-	-	4,978
Quartet - Stoke Park Friends' Fund	-	3,000	(3,000)	-	-
Quartet - New Development	-	9,000	-	-	9,000
Quartet - Youth & Play Support	-	5,000	-	-	5,000
Royal Horticultural Society	-	2,000	(2,000)	-	-
Swire	-	20,000	(20,000)	-	-
Tesco Stronger Starts	-	1,125	(1,125)	-	-
Thrive	-	3,350	(3,350)	-	-
University of Bristol	(252)	-	-	252	-
University West of England	-	3,016	(3,016)	-	-
Veolia - Community Garden	903	-	(903)	-	-
WECA Community Pollinator Fund	-	11,774	(11,774)	-	-
Will Charitable Trust	-	5,000	(5,000)	-	-
Total restricted funds	49,874	317,924	(315,643)	252	52,407

St. Werburghs City Farm

Notes to the financial statements

For the year ended 31 March 2025

17. Movements in funds (continued)

Total restricted funds	<u>49,874</u>	<u>317,924</u>	<u>(315,643)</u>	<u>252</u>	<u>52,407</u>
Unrestricted funds					
<i>Designated funds:</i>					
Three month operational reserve	<u>107,426</u>	<u>-</u>	<u>-</u>	<u>-</u>	<u>107,426</u>
<i>Total designated funds</i>	107,426	-	-	-	107,426
Capital fund	306,343	-	(24,364)	-	281,979
General funds	<u>10,400</u>	<u>447,030</u>	<u>(426,977)</u>	<u>(252)</u>	<u>30,201</u>
Total unrestricted funds	<u>424,169</u>	<u>447,030</u>	<u>(451,341)</u>	<u>(252)</u>	<u>419,606</u>
Total funds	<u>474,043</u>	<u>764,954</u>	<u>(766,984)</u>	<u>-</u>	<u>472,013</u>

Purposes of restricted funds

Awards for All	Contribution towards staff, resources, and overheads costs for educational opportunities for children and young people.
B&Q SFGC Ramp	New ramp for access to our cabin, for the benefit of disabled adults accessing our Supported Farming & Green Care service.
Baily Thomas	Project costs for our Supported Farming & Green Care service.
Bath Spa Internships	Funding for intern opportunities at the Farm.
Children in Need	Project costs for our after-school child and youth provision.
Co-op Local Community Fund	Supporting horticultural traineeship programme at Propagation Place.
Community Asset Management	Contribution towards some staff training costs, and commissioning local architects to launch planning phase of a major capital redevelopment.
D Oyly Carte Company	Project costs for our Supported Farming & Green Care service.
Ernest Cook Trust	Outdoor Learning Officer staff costs.
Finnis Scott	Materials costs for horticultural project within our Skills & Wellbeing programme (formerly 'Volunteering').
Garfield Weston	Core costs to support the Farm charity and delivery of all our work.
HDH Wills	Contribution to project costs for educational opportunities for children and young people.

St. Werburghs City Farm

Notes to the financial statements

For the year ended 31 March 2025

17. Movements in funds (continued)

Purposes of restricted funds (continued)

Henry Smith	Project costs supporting our Skills & Wellbeing programme, and Propagation Place provision.
ICE	Funding for our Skills & Wellbeing programme.
Medlock	Contribution to project costs for educational opportunities for children and young people.
Nisbet Trust	Contribution to project costs for educational opportunities for children and young people.
Oliver Ford Foundation	Project costs for our Supported Farming & Green Care service.
Portishead Nautical	Contribution to project costs for learning opportunities and experiences in nature for children and young people.
Quartet - Decking	Funding to renew decking.
Quartet - Seasonal Celebrations	Funding to host a series of community feasts for locals and participants.
Quartet - Stoke Park Friends' Fund	Project costs for our Supported Farming & Green Care service.
Quartet - Youth & Play Support	Project costs for our Child & Youth provision.
Royal Horticultural Society	Supporting Propagation Place to attend the RHS Malvern Spring Festival.
Swire	Project costs for our Skills & Wellbeing and Child & Youth provision.
Tesco Stronger Starts	Project costs for our Child & Youth provision.
Thrive	LED lighting and new electric heating system.
University of Bristol	Funding to provide internship opportunities for students.
University West of England	Funding to provide internship opportunities for students.
Veolia - Community Garden	Funding to improve our community garden.
WECA Community	Funding to create a pollinator trail on site.
Will Charitable Trust	Project costs for our Supported Farming & Green Care service.

St. Werburghs City Farm

Notes to the financial statements

For the year ended 31 March 2025

17. Movements in funds (continued)

Purposes of restricted funds (continued)

Purposes of designated funds

Three month operational reserve

Designated funds comprises of ring-fenced operational reserves equivalent to at least three months 'running costs'. In the event of the Farm needing to close, these funds could cover operational costs incurred while winding up the charity, including redundancy payments, relocation of the animals and professional fees. The calculation of running costs is based on core services within the Organisational Budget, not including time-specific projects, capital investment or depreciation.

Purposes of unrestricted funds

Capital fund

The capital fund represents the net book value of assets held. The majority of assets are funded from restricted grants which are transferred to unrestricted once the restriction has been discharged. This fund includes the Boiling Wells kitchen and the Connection Centre discharged from restricted funds on construction.

St. Werburghs City Farm

Notes to the financial statements

For the year ended 31 March 2025

17. Movements in funds (continued)

Prior year comparative	At 1 April 2023 £	Income £	Expenditure £	Transfers between funds & gains / £	At 31 March 2024 £
Restricted funds					
AWT Healthier with Nature	-	4,224	(4,224)	-	-
BCC - Community	2,500	-	(2,500)	-	-
BCC - HAF	2,105	6,592	(8,697)	-	-
Bristol Community Health Trust	11,500	-	(11,500)	-	-
BYCA Holiday Activity	-	2,610	(2,610)	-	-
Charbritton Trust	-	5,000	(5,000)	-	-
CLA Charitable Trust	-	3,000	(3,000)	-	-
David Solomon's Charitable Trust	-	1,000	(1,000)	-	-
Edward Gostling Foundation	-	10,000	(10,000)	-	-
Enterprise Development Programme	(755)	8,180	(7,425)	-	-
Ernest Cook Trust	14,951	14,951	(17,915)	-	11,987
Garfield Weston	-	25,000	(25,000)	-	-
Green Match Fund	-	2,472	-	-	2,472
Henry Smith	-	32,050	(24,845)	-	7,205
Lord Barnby	-	5,000	(5,000)	-	-
Medlock	-	5,000	(5,000)	-	-
National Grid - Woodland Access for All	-	9,709	(9,709)	-	-
National Lottery Community Fund	10,000	-	(10,000)	-	-
Nineveh	-	4,000	(4,000)	-	-
Nisbet Trust	11,000	15,000	(13,441)	-	12,559
Quartet - Decking	-	1,000	-	-	1,000
Quartet - Rewild Child	3,000	-	(3,000)	-	-
Quartet Resilience	-	9,000	(9,000)	-	-
Royal Horticultural Society	292	-	(292)	-	-
Souter Charitable Trust	-	5,000	(5,000)	-	-
Spielman Trust	-	10,000	(10,000)	-	-
The Big Give	-	2,420	(2,420)	-	-
B&Q SFGC Ramp	-	5,000	-	-	5,000
Children in Need	-	9,000	-	-	9,000
University of Bristol	836	-	(1,088)	-	(252)
Veolia - Community Garden	-	10,464	(9,561)	-	903
Warburtons Community Grant	-	400	(400)	-	-
WECA Community Pollinator Fund	-	17,796	(17,796)	-	-
Will Charitable Trust	-	8,000	(8,000)	-	-
Woodroffe Benton	-	2,500	(2,500)	-	-
Total restricted funds	55,429	234,368	(239,923)	-	49,874

St. Werburghs City Farm

Notes to the financial statements

For the year ended 31 March 2025

17. Movements in funds (continued)

Total restricted funds	<u>55,429</u>	<u>234,368</u>	<u>(239,923)</u>	<u>-</u>	<u>49,874</u>
Unrestricted funds					
<i>Designated funds:</i>					
Three month operational reserve	107,426	-	-	-	107,426
<i>Total designated funds</i>	107,426	-	-	-	107,426
Capital fund	328,524	-	(24,281)	2,100	306,343
General funds	<u>26,448</u>	<u>393,944</u>	<u>(407,892)</u>	<u>(2,100)</u>	<u>10,400</u>
Total unrestricted funds	<u>462,398</u>	<u>393,944</u>	<u>(432,173)</u>	<u>-</u>	<u>424,169</u>
Total funds	<u><u>517,827</u></u>	<u><u>628,312</u></u>	<u><u>(672,096)</u></u>	<u><u>-</u></u>	<u><u>474,043</u></u>

18. Related party transactions

There were no related party transactions in the current or prior period.