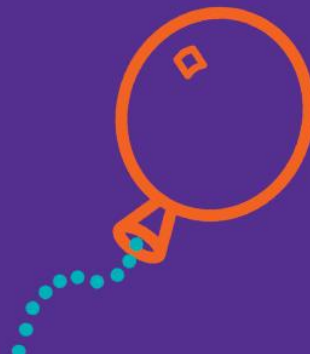




## Annual Report 2024-2025



**Because  
tomorrow  
starts today**



Home-Start Newark, YMCA, Newark & Sherwood Community and Activity Village,  
Lord Hawke Way, Newark, NG24 4FH

[www.homestartnewark.co.uk](http://www.homestartnewark.co.uk). 01636 705011

A company limited by guarantee. Registered in England and Wales company No.  
5433103. Registered Charity No. 1109551

## **Meet The Team**

### **The Trustee Committee:**

Terry O'Dea – Chair  
Karen Southern – Treasurer  
Howard Lockwood – Trustee  
Jane Geraghty – Safeguarding Trustee  
Gemma Bukel – Trustee (left)  
Ian Barber – Trustee  
Sue Smith – Trustee  
Deborah Preston  
Lucy Day

### **Staff:**

Sara Grant – Manager  
Kim Shirley – Administrator & Group Family Support Worker  
Kay Davidge – Family Support Co-Ordinator (Step Up for School)  
Claire Neal – Family Support Co-ordinator  
Emma Fish – Family Support Co-Ordinator  
Julia Sumner – Family Group Worker (left)  
Michelle Bentley – Family Group Playworker  
Sally Banton – Grants and Corporate Funding Officer

# Chair's Report

Thank you for your interest in Home Start Newark and for taking the time to read our Annual Report for 2024/25

After the excitement of celebrating our 40<sup>th</sup> Anniversary early in the year our focus for the remainder has been sustainability for future years. Our records clearly show that there is a continuing need for our services in the Newark and Ollerton areas and with Group sessions currently in Newark only. Our success relies on funding from national and local bodies and from generous private donors. We are grateful for the support we receive and can assure each one that funds are used to full advantage. However, we are not complacent as we realise the funding landscape is changing so we invest time and effort in exploring all options open to us to provide sustainability going forward

Our professional team, Volunteers and Trustees all work in partnership to support families referred to us and I would like to personally thank them all for the work they do and the time they invest in our scheme. We all do it as we see the positive effects that we achieve and, of course, the personal satisfaction that we feel when we see the short and long term benefits within the families we support. If anyone reading this feels that they would like to join us as Volunteer or Trustee please contact us and we can give you details on what we can offer. You will not be disappointed.

Terry O'Dea

Chair of Trustees

# Treasurer's Report

We would like to thank the local businesses, organisations, agencies and individuals for their generosity in providing grants and donations during 2024-25. We received core funding from Nottinghamshire County Council and Newark and Sherwood District Council, Family Group funding from Children in Need, grant funding for our Step up for School service from The Domlal Foundation and grants from HSUK Cadent, Lincs Co-op Communities Fund, Southwell Lions, Lashes Foundation, BNA Charitable Incorporated and John Lewis Group Summer Fund and these were gratefully received. In addition, we have received donations from anonymous donors and a number of donations from businesses and individuals through one off donations, regular giving, local giving through our website and easy fundraising. All of these were hugely appreciated and helped us continue to reach the families who need us.

Overall, income was £123,714, a decrease of £28,949 from the previous year and expenses increased by £1,081 to £145,669.

The Charity showed a deficit of £21,955 in 2024-25 compared to a surplus of £8,075 in the previous year. Reserves at the end of the financial year were £96,588.

Home-Start Newark acknowledges that, compared to many charities, we are fortunate to be able to rely on both government and voluntary funding. We acknowledge the ever-changing funding climate that we are working with and are continually looking for new sources of funding to secure the ongoing services we provide to families. We also acknowledge the continued support of Newark & Sherwood District Council.

Thanks go to all our funders and supporters, including volunteers, staff and families and to local businesses for their help this year.

Karen Southern  
Treasurer

## Manager's report

We had a lot to celebrate this year, starting with our 40<sup>th</sup> birthday which we celebrated in the early summer of 2024, with families, volunteers, trustees and supporters past and present joining us to enjoy sunshine, food and company. We reflected on the changes we've seen in these years and the things that have stayed the same. One thing that stayed the same is how tough it can be to be a parent, and how much difference it can make when you are offered the right kind of help. We are proud to have offered the right kind of help to all kinds of families for 40 years in our local communities.

This year we recruited 13 fantastic new Home-Visiting Volunteers to our amazing team, supporting local families with children under 5. We are continuing to evolve our Volunteer Preparation Course so that it delivers essential training in a way that is accessible and a good fit for our volunteers, whilst also reflecting the needs we see in our local areas. Our Family Support Workers Claire Neal, Emma Fish and Kay Davidge have worked hard to recruit and train our volunteers, and to coordinate the great work they are doing supporting families. We were also joined by 2 new potential Trustees, Debbie Preston and Lucy Day, who have been going through their induction and bringing some great skills and experience to our organisation, and are about to become full Trustees. Trustee Gemma Bukel stepped away due to increasing work commitments – we will miss her skills and experience in voluntary sector strategy and governance.

Our Family Group has had a change in staffing, with our previous Group Family Support Worker Julia Sumner moving on to a new opportunity – we will miss her drive and enthusiasm. This role has been ably filled by our Administrator Kim Shirley, who has been a wonderful addition to the team there. She and Michelle Bentley, our Group Children's Worker will tell you in their own words about the great developments at our Family Group later in this report.

Our Step Up For School (SUFS) service has gone from strength to strength. The way the service is funded means that our statistics for this run by the calendar year, rather than our financial year. In 2024 the engagements with our SUFS Outreach Service had almost doubled from 2023, which shows the real need for this work. SUFS also continues to be interwoven through our Home Visiting and our Family Group services and is a key part of training for all new volunteers. Kay Davidge our SUFS worker has provided an update on this vital work later on in this report.

In the summer of 2024 we took 2 coach loads of families to the Tropical Butterfly House near Worksop. It was a fun-packed day, with plenty for children of all ages to do, from a tropical hothouse full of enormous butterflies, to play parks, bird of prey shows, lots of animals and of course picnics all round! Plenty to keep the children busy. The coaches were definitely much quieter on the way home than on the way out!

Throughout autumn and winter our Volunteer Counsellor provided one to one counselling support to parents, based at the YMCA. With many waiting lists for this kind of service currently very long, it has been wonderful to provide this valuable service freely to local parents.

We ran our annual safeguarding update for volunteers and trustees, this time in partnership with staff from Newark & Sherwood District Council with a focus on safeguarding and home conditions, helping support our volunteers to identify when this might become a concern in a family home and what to do if it does.

And we celebrated in December with our annual Christmas party, held at our Family Group, with lots of activities provided by Little City Lincoln, a party tea and a very special visitor with a gift for every child.

Also in December we were delighted to be joined by our new Grants and Corporate Funding Officer Sally Banton, who has been working closely with me and our dedicated Trustees to apply for funds, increase our financial resilience and strengthen our longer term funding approach.

I want to end my report with heartfelt thanks to all of our amazing staff, who work so hard to deliver our vital services. I am so proud of our team and all we have achieved over the last year. Huge thanks as well to all of our Trustees and volunteers who give their time to our work with local families. We really could not do this without them. Thanks to all our funders and supporters for enabling us to continue to be there for families when they need us the most. And finally thank you to the families who allow us the privilege of being with them as they navigate some of their toughest times.

Sara Grant

Manager

# Annual Statistics

## Families, Children & Engagements

- We have supported **39** home visiting families
- We have supported **40** families through our Family Group
- **In total we have supported 79 families across both services**
  
- **151** children have been supported by home visiting and Family Group
- In addition, we supported a further **22** older children during our Family Group holiday sessions
- **In total we have supported 173 children across both services\***  
*\*This does not include older children within home visited families, who also benefit indirectly from the support provided to their family*
  
- We had **106** family engagements with our Step Up For School Community Outreach Service in 2024

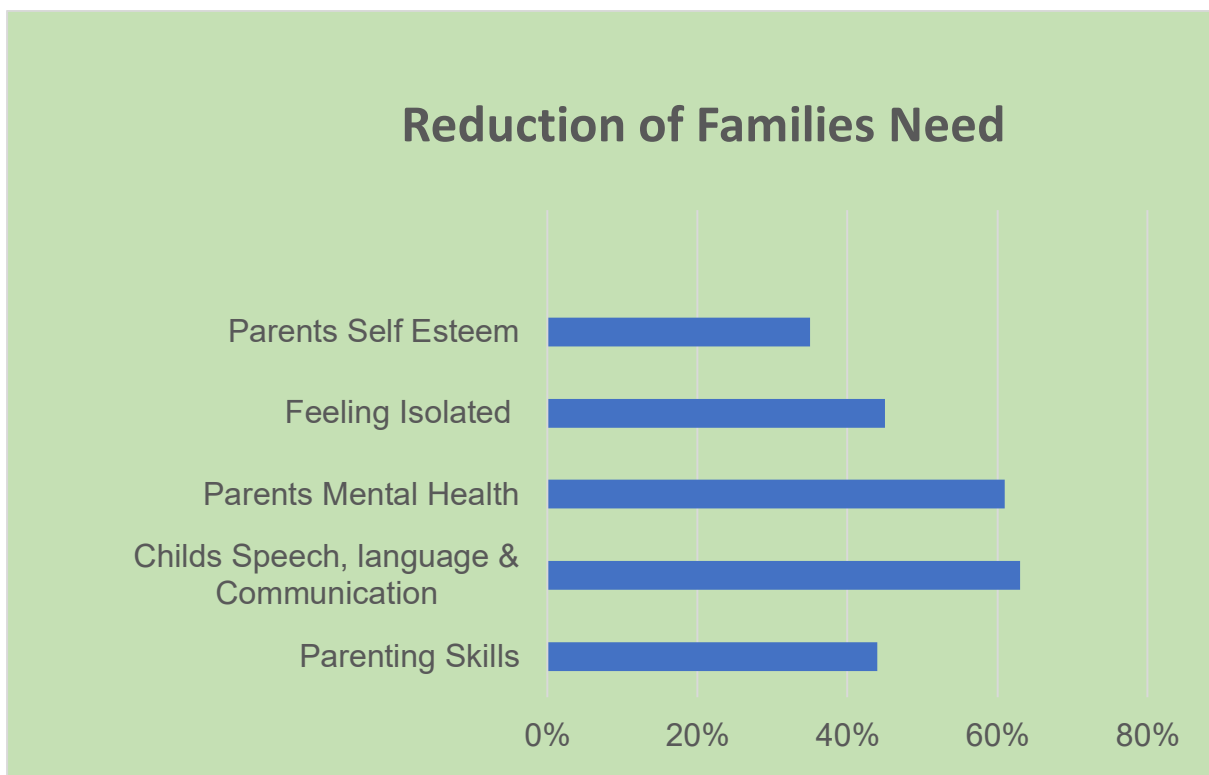
## Volunteers

- **10** volunteers have provided support at family group
- **27** volunteers have supported home visited families
- **13** new volunteers completed our Preparation course.
- **3** volunteers supported our fundraising work
- **1** qualified volunteer counsellor supported **2** families
- Our Volunteers and Trustees gave approximately **2378** hours of their time.

# The Difference We Make

At the beginning and end of home-visiting support with us (and in the middle too) we ask families to self score on their level of need in certain priority areas, including the ones listed below.

This chart demonstrates the reduction in need during the year with families starting support with us and finishing support with us. This clearly shows that the work we do enables families to make meaningful progress in the areas that matter to them.



## Feedback from families receiving support

1:1 support has been good to offload, good conversations and made me feel less isolated.

I feel more in control and feel better about myself.

I've loved having my volunteer, a great extra pair of hands. Home-Start has been amazing for our family, and we really appreciate what you've done"



My volunteer is lovely, friendly and non-judgemental. Home Start helped me get back on top of things

My volunteer helped me keep organised and I would recommend Home Start to help with wellbeing and struggles of being a single parent'

I have found the work from Home Start volunteers and those that make it possible for the coffee morning sessions to have been invaluable for the families that I have referred in over the years.  
Referrer Quote.

# Family Group Report

Our Family Group Support Worker, Julia Sumner, left to pursue other opportunities in the summer. Over the summer staff supported Michelle Bentley, Group Children's Worker, to ensure that we continued to offer sessions to our older siblings as well as our under five-year-olds during the summer holidays.

We took 2 coaches to visit The Tropical Butterfly house in August, where despite the weather, families had a lovely time walking around and seeing the animals and watching the bird display.

In October we welcomed Kim Shirley, our Administrator to work alongside Michelle to run the Family Group sessions and continue to support staff/Trustees/volunteers and families through her administration role. We are pleased to confirm that this is now a permanent role and Kim, Michelle and the volunteers continue to evolve family group with new ideas and have updated some of the toys and introduced more messy play as part of the sessions.

We celebrated Christmas with a visit from Little City who brought along lots of little shops so that children could use their imagination whilst playing. We also had a visit from Father Christmas who brought all the children a little gift.

We must thank the Salvation Army who supported our families with toys at Christmas, this meant so much to our parents and we thank them for their continued support.

Our Family Group have welcomed some new families with lots of babies now attending and had to extend the baby area to accommodate all the babies. It is lovely to see the babies develop skills with sitting/crawling and a couple of them started to walk.

We continue to celebrate Valentine's Day, Mother Day, Father's Day, Pancake Day, Easter, World Book Day.

We have had visits from the Family Hub who came along to a session every couple of months to chat to parents and sign post them to courses that they are running. We also had the Mini Museum, part of the National Civil War Museum to run 6 fun sessions to stimulate children's imagination through play. They set up different historical activities such as Egyptians and Romans.

We celebrated Children in Need with the fantastic news that we have secured funding through the larger grant application for a further 3 years from 2025. We also received funding from John Lewis to enable us to purchase some more educational toys for the older children to enjoy during the school holidays.

We continue to work closely with our Step up for School Coordinator, who runs our early development programme, to ensure that we develop activities that will benefit outcomes of learning through play; speech, language and communication

development, playing collaboratively; sharing and taking turns; fine and gross motor skill development, plus building parental engagement with children's learning.

During 2025-2026 we will continue to provide a safe space for our parents and children to attend, provide a healthy breakfast and be there for parents when they are facing challenging times. We offer a free, confidential, non-judgemental environment for families to attend. We will continue to invite older siblings into sessions during the school holidays.

Michelle Bentley, Group Children's Worker

& Kim Shirley, Administrator and Group Family Support Worker



*Red Nose Day Biscuit Decorating*



*All Set up with Little City for Christmas Fun*



*Waiting for a special visitor*



# Step up for School

This year there has been an increase in media coverage in relation to children not being school ready. A report by the Centre for Young Lives was published this year highlighting the causes of this and interventions that need to take place to support children to meet these milestones.

It reveals A 1/3 of children were not school ready across the country. Over half of children who were not school ready performed below expected in their Key Stage 1 reading assessment. Our Step up for School project has worked hard this year to help children achieve their milestones and be ready for school.

## Community Engagement

Our community engagement sessions continue to grow in size and popularity with us reaching 106 engagements over 19 site visits from parents this year, nearly doubling last years number of 65.

We have given out 168 resources, the highest category being speech, language and communication at 20% and toilet training books at 15% of interactions.

One parent said about the first words books:

***'I love getting these books, we sit together and my little girl learns them off by heart'***

(Yorke Drive Parent, 2024)

We have also started to include sensory play sessions in the community where groups do not have the space to store or resources to do it.



(pictures from Bilsthorpe Little Stars community outreach session, 2024)

## Core Support

Out of 262 home visits in 2024, 140 have including support within Step up for School to boost child development and school readiness. Motor skills was the highest at 35%, followed by speech, language and communication at 23% and social skills at

22%. Toileting however only equates to 5% which does not match the community support need. Last year speech, language and communication was the most prevalent support area for families. Since then we have increased the amount of different resources we give out or make available to parents including first word books, flashcards, story books and encouraging two way conversation.

### **Family Group**

Working closely with Family Group staff we have ensured that the children have a variety of activities to encourage their development and achieve milestones. We have enhanced the motor skills activities by providing more variety of jigsaws, and construction toys; ideas we got from our visit to Pen Green earlier in the year. The construction toys allow the children more opportunity to work together and bring on their social skills as well as develop their motor skills. Below is a sensory trolley we provided which all the children enjoy!



Family group has created a great routine for the children to attend that mimics routines in nursery and school. The children arrive, hang up their coats and play for around an hour, followed by snack time where they wash their hands and sit together at a table to eat. Afterwards they all come together on the mat for story time or song time, where parents engage with them too. Our volunteers have worked hard to bring a variety of props and ideas to story and song time to keep the children's attention and engage with the activity.

We look forward to another exciting year ahead, using the data from our engagement and reports from organisations like Kindred we can establish the needs most prevalent. We can provide parents with toileting aids, potties, toilet seats, stools; and instigate these conversations within core support to bridge the gap on understanding between schools and parents. Encourage interactive play to promote speech, outdoor activities to bring on motor skills and assist parents in establishing routines in the home.

We will continue to keep strong links with organisations such as Nottinghamshire Best Start, SLCN (Speech, Language and Communication Network), GRT (Gypsy, Romany Traveller) multi agency meetings, as well as the local Family Hubs in Ollerton and Newark to provide this support to as many families who can benefit from it.

Kay Davidge

Family Support Worker Step Up For School

# Funding Report: Laying the Foundation for Growth

## **Introduction: A Strategic Decision**

Following a period of review and in recognition of the increasingly challenging funding landscape, the Trustees of Home-Start Newark made the decision to invest in a dedicated fundraising role. This was a proactive and vital step to help secure our long-term future. In December, we were delighted to have a new part-time Grants and Corporate Funding Officer join the team, with a specific focus on diversifying our income streams and creating a more systematic approach to securing grant and corporate funding. This has been a crucial decision to help us build a strong foundation for growth.

## **Grant & Corporate Fundraising**

Over the past four months, we have developed a comprehensive grant funding pipeline document and a real-time dashboard to streamline our application process and track our progress. By the end of this period, the potential value of our grant funding pipeline stood at £200,701 from 23 potential funders, with a total of 10 grant applications submitted, worth a combined value of £48,757. These were primarily to help cover the funding shortfall for our services in the Ollerton, Boughton, and Bilsthorpe areas.

Our efforts resulted in immediate success, with two applications being secured: a £9,000 grant from Cadent and £400 in vouchers from John Lewis. Looking ahead, we will be developing a comprehensive case for support document to articulate the tangible outcomes of our work with data and compelling stories. This document is crucial for future applications. Our strategic focus for the next period is to pursue grant funding for key projects, including essential IT equipment, activities and trips, play equipment, and staff salary costs.

## **Corporate and Other Initiatives**

In addition to our grant work, we have begun to develop a corporate funding pipeline to track potential opportunities. We have also established an Amazon Wish List for supporters to donate items directly and have started to explore new opportunities, including the Big Give portal and the potential for developing our individual giving. Looking forward, our strategy includes building long-term partnerships with local businesses and community groups that align with our values and actively participating in networking events to expand our reach within the local business community.

Sally Banton

Grants and Corporate Funding Officer

# Fundraising Report

Thank you to everyone who has supported Home-Start Newark through the Newark and Sherwood Community Lottery (a third party fundraiser) Local Giving and Easyfundraising schemes and anyone who has donated in any other way.

Thank you to the friends of Newark who donate annually and enable us to claim gift aid on their very kind donation.

John Lewis/Waitrose Newark have continued to support during the year with a donation of toys at Christmas. We were also fortunate to win a grant from John Lewis to provide toys for our Family Group.

Thank you to the Salvation Army for their continued support at Christmas time with presents for our families. Our families are very grateful to receive gifts for their children and to help make their Christmas special.

Asda of Newark supported us during the year with donations of nappies. They also donated some photo frames so our Family Group children could make their mums/carers a special gift for Mother's Day.

Thank you to Natwest bank in Grantham for their continued support collecting foreign coins.

A huge thank you to our lovely quizzers, who continue to support us twice a year by attending our Quiz Night and raise money for Home Start Newark. Thank you to Yvonne who without her support we could not run the events. Thank you to the volunteers who attend to help.

Kim Shirley

Administrator and Group Family Support Worker

THANK YOU  
**Volunteers!**  
We couldn't do it without you

We would like to say a big thank you to all of our volunteers, your spirit, energy and commitment to Home-Start Newark makes a difference every day to our families. whether this is through working on the Board of Trustees, Home Visiting Volunteer, Group Volunteer or supporting us with Fundraising. Your support throughout the year is really appreciated.

If you would like to volunteer for Home Start Newark please get in contact with us via social media, call on 01636 705011, email us at [info@homestartnewark.co.uk](mailto:info@homestartnewark.co.uk), or get in touch via our contact page on our website.

**To be a Home-Start Newark Home Visiting Volunteer, you will need to:**

- Be a parent or have parenting experience
- Undergo a DBS check at enhanced level and provide two character references
- Attend our free volunteer preparation course. This is a blended course with initial on-line modules to complete at your own pace, followed by a 3 day (school-day-friendly) face to face group learning.
- Be able to visit a family at home, once a week, for around two hours, to support them
- Understand that your support for families is completely confidential
- Have a non-judgemental attitude and understand about the pressures of bringing up a family.

You might also be interested in the following volunteering opportunities, which also require you to undergo a DBS check and provide references as above:

- Helping out at our Family Group on a Tuesday and/or Thursday morning in central Newark.
- Joining our board of Trustees

# ANYONE can help us by.....

## **Using easyfundraising when shopping online.**

Make your purchases through:

[www.easyfundraising.org.uk/causes/homestartnewark](http://www.easyfundraising.org.uk/causes/homestartnewark).

*It won't cost you a penny and you can even save money by using their vouchers and discount codes. For every purchase you make Home-Start Newark will receive a donation of up to 5%!*

## **Making a donation through local giving:**

[www.localgiving.org/charity/homestartnewark](http://www.localgiving.org/charity/homestartnewark)

## **Following us on our social media:**

We are active on Facebook and Instagram – connect with us there to find out more about the vital work we do and how you can get involved

## **Join our Newark & Sherwood Lottery**

play the lottery and raise funds for Home Start Newark. Every ticket sold we will receive 50% of ticket sales.

[www.newarkandsherwoodlottery.co.uk/support/home-start-newark](http://www.newarkandsherwoodlottery.co.uk/support/home-start-newark)

**Checkout our website: [www.homestartnewark.co.uk](http://www.homestartnewark.co.uk)** For any more information please feel free to contact us on 01636 705011, or by email: [info@homestartnewark.co.uk](mailto:info@homestartnewark.co.uk), or through facebook or our website.

## AIMS

Home-Start Newark scheme is an independent voluntary organisation which works towards the increased confidence and independence of the family.

Home-Start Newark's Strategic Plan 2021-2024 identifies a range of specific and forward-thinking objectives.

The aims below provide an overview of these:

- Develop our services to meet changing demands
- Invest in our people to get great results
- Work to create a strong financial future
- Build strong relationships and raise our profile

SUPPORTED BY



**HOME-START NEWARK**

**YMCA NEWARK & SHERWOOD COMMUNITY ACTIVITY VILLAGE,  
LORD HAWKE WAY, NEWARK, NOTTINGHAMSHIRE.**

**ACCOUNTS**

**YEAR ENDED 31 MARCH 2025**

SECRETARY S.E. Grant	REGISTERED OFFICE -	YMCA Newark & Sherwood Community Activity Village, Lord Hawke Way, Newark, Nottinghamshire. NG24 4FH
COMPANY NUMBER 5433103		
CHARITY NUMBER 1109551		

**INDEX**

	<u>Page</u>
Trustees'/Directors' report	1 - 2
Independent Examiner's report	3
Profit and loss account	4
Statement of Financial Activities	5
Balance sheet	6
Notes	7 - 11

**David Pattinson, Chartered Accountants,  
233, London Road, Balderton, Newark, Nottinghamshire.**

## HOME-START NEWARK

### TRUSTEES' ANNUAL REPORT

The trustees present their report and the accounts of the company for the year ended 31 March 2025.

#### OBJECTIVES AND ACTIVITIES

The objects of the company are to increase the confidence and independence of the family by:

- a) offering support, friendship and practical assistance;
- b) visiting families in their own homes, where the dignity and identity of each adult and child can be respected and protected;
- c) reassuring parents that difficulties in bringing up children are not unusual and encouraging them to enjoy family life;
- d) developing a relationship with the family in which time can be shared and understanding can be developed: the approach is flexible to take account of different needs;
- e) encouraging parents' strengths and emotional well-being for the ultimate benefit of their children;
- f) encouraging families to widen their network of relationships and to use effectively the support and services available within the community.

#### Our aims and objectives

In order to achieve our vision and strengthen our organisation Home-Start Newark will pursue the following aims and objectives:

**Our delivery:** Continue to provide tailored support to families in a professional and efficient manner

- Ensure systems, policies and processes are maintained to provide effective operations
- Ensure effective governance and financial control is maintained
- Ensure the safeguarding of children remains at the core of all areas of work

**Our Services:** Ensure our services are as appropriate, effective and responsive as they can be within the changing social, political and pandemic situation.

- Keep our services under frequent review to ensure we are able to respond rapidly to developments relating to the global pandemic changing need and identify ways they may be refined or adapted to meet
- Continue to engage with families in a range of ways to obtain feedback regarding our services to ensure we remain responsive to changing needs.

**Our People:** Ensure we continue to have motivated and engaged volunteers and staff in place to enable delivery of our services

- Maintain a watchful eye on volunteer numbers ensuring recruitment occurs at appropriate levels to maintain sufficient numbers to deliver our home visiting service and group support facility and consider new approaches to volunteer recruitment
- Ensure that Home-Start Newark continues to be an organisation of choice for people to work and volunteer for by offering relevant ongoing training, support and development opportunities
- Ensure our equalities and diversity policy is central to all staff and volunteer recruitment, development and support plans.

**Our Finances:** Ensure that our organisation is financially secure now and in the future

- Develop and maintain a clear strategy for strengthening our financial position including accessing grants, fundraising activities and one-off funding bids in line with our ethical fundraising policy
- Continue to closely observe accounts, actively working to anticipate possible future variables in income and expenditure

**Our relationships:** Ensure we maximise our opportunities to develop strategic partnerships that will advance our vision

- Consider how relationships with key stakeholders could be developed by exploring local collaborative working or reciprocal support and signposting
- Work to improve our relationship with local businesses, networking at local events and actively engaging with them where appropriate.

**Our Profile:** Ensure we maintain a strong local and regional reputation

- Ensure our marketing and communication materials are fully updated in line with Home-Start UK expectations to ensure continued visibility and providing effective materials for publicity purposes and funding bids
- Take steps to raise our profile with local businesses
- Develop our social media presence, targeting relevant material towards differing audiences

## HOME-START NEWARK

### TRUSTEES' ANNUAL REPORT

#### ACHIEVEMENTS AND PERFORMANCE

During the year, Home-Start Newark has continued the provision of its core Home Visiting Service, Family Group Service and Step Up For School (SUFS) Service, as well as continuing to develop new plans and projects to help families in the district in line with stated objectives.

In increasingly difficult times, we are delighted to have continued to receive funding from Newark and Sherwood District Council, Nottinghamshire County Council, as well as local businesses and donors, grant funding, individual donors and supporters and fundraising activities.

We thank staff, volunteers, trustees and everyone who helps support Home-Start Newark in the challenging work it does.

Sara Grant  
Manager

#### FINANCIAL REVIEW

There was a net deficit of £21,955 for the year ended 31 March 2025. Total funds carried forward are £76,673 plus the revaluation reserve of £19,915.

It is the policy of Home-Start Newark to build and retain a reserve that would:

- a) Ensure the organisation could meet all outstanding liabilities should core funding be withdrawn at short notice.
- b) Ensure the organisation could continue operating for three months should core funding be significantly reduced. A significant reduction has been taken to mean a 50% cut. During the year in question all efforts would be made to obtain alternative funding to continue the service in the future.

#### STRUCTURE, GOVERNANCE AND MANAGEMENT

Home-Start Newark is a company limited by Guarantee, the governing document being the Memorandum and Articles of Association.

Trustees are recruited from the local area and are people of good standing within the community, with the appropriate skills to support the scheme.

#### REFERENCE AND ADMINISTRATIVE DETAILS

The directors in office in the period and up to the date of this report, who are also trustees, were as follows:

- a) J. Geraghty, H. Lockwood, T O'Dea, I.M. Barber, S. Smith and K.J. Southern served throughout the year.
- b) G. Bukel and C. Willey resigned during the year.

This report has been prepared in accordance with the special provisions relating to companies subject to the small companies regime within part 15 of the Companies Act 2006, and the Charities Statement of Recommended Practice (FRS102)(effective January 2015).

By order of the Board on 8 September 2025

Secretary

\_\_\_\_\_ SARA GRANT



**INDEPENDENT EXAMINER'S REPORT TO  
THE TRUSTEES OF HOME-START NEWARK**

I report on the accounts of Home-Start Newark, for the year ended 31 March 2025 which are set out on page 4 to 11.

**Respective responsibilities of trustees and examiner**

As the Charity's trustees you are responsible for the preparation of the accounts; you consider that the audit requirement of section 144 of the Charities Act 2011 (the Charities Act) does not apply, and that an independent examination is needed.

It is my responsibility to:

- examine the accounts under Section 145 of the Charities Act,
- to follow the procedures laid down in the general Directions given by the Charity Commission (under section 145(5)(b) of the Charities Act), and
- to state whether particular matters have come to my attention.

**Basis of independent examiner's statement**

My examination was carried out in accordance with the General Directions given by the Charity Commissioners. An examination includes a review of the accounting records kept by the Charity and a comparison of the accounts presented with those records. It also includes consideration of any unusual items or disclosures in the accounts, and seeking explanations from the trustees concerning any such matters. The procedures undertaken do not provide all the evidence that would be required in an audit, and consequently no opinion is given as to whether the accounts present a 'true and fair' view and the report is limited to those matters set out in the statement below.

**Independent examiner's statement**

In connection with my examination, no matter has come to my attention:

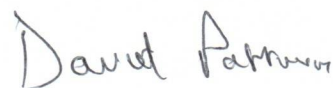
(1) which gives me reasonable cause to believe that in any material respect the requirements:

- to keep accounting records in accordance with section 130 of the Charities Act; and
- to prepare accounts which accord with the accounting records and comply with the accounting requirements of the Charities Act.

have not been met; or

(2) to which, in my opinion, attention should be drawn in order to enable a proper understanding of the accounts to be reached.

David Pattinson, Chartered Accountant  
233, London Road,  
Balderton,  
Newark,  
Nottinghamshire.  
NG24 3HA



9 September 2025

**HOME-START NEWARK**  
**PROFIT AND LOSS ACCOUNT**  
**YEAR ENDED 31 MARCH 2025**

	2025	2024
	£	£
TURNOVER	122,278	151,254
Administrative expenses	145,669	144,588
OPERATING PROFIT/(LOSS)	(23,391)	6,666
Interest receivable and similar income	1,436	1,409
PROFIT/(LOSS) ON ORDINARY ACTIVITIES BEFORE TAXATION	(21,955)	8,075
Tax on profit on ordinary activities	-	-
PROFIT/(LOSS) FOR THE FINANCIAL YEAR AFTER TAXATION	(21,955)	8,075
Retained surplus brought forward	98,628	90,553
RETAINED SURPLUS CARRIED FORWARD	76,673	98,628

The notes on pages 7 to 11 form part of these accounts

## HOME-START NEWARK

## STATEMENT OF FINANCIAL ACTIVITIES

YEAR ENDED 31 MARCH 2025

	Note	2025		Total	2024		Total
		Unrestricted funds £	Restricted funds £	funds £	Unrestricted funds £	Restricted funds £	funds £
<b>Income and endowments from:</b>							
	3						
Donations and legacies		53,111	67,226	120,337	66,539	82,423	148,962
Other trading activities		1,941	-	1,941	2,292	-	2,292
Investments		1,436	-	1,436	1,409	-	1,409
<b>Total</b>		<b>56,488</b>	<b>67,226</b>	<b>123,714</b>	<b>70,240</b>	<b>82,423</b>	<b>152,663</b>
<b>Expenditure on:</b>							
	4						
Raising funds		500	-	500	768	14	782
Charitable activities		68,064	75,210	143,274	49,877	91,970	141,847
Other		1,555	340	1,895	1,649	310	1,959
<b>Total</b>		<b>70,119</b>	<b>75,550</b>	<b>145,669</b>	<b>52,294</b>	<b>92,294</b>	<b>144,588</b>
<b>Net income/(expenditure)</b>		<b>(13,631)</b>	<b>(8,324)</b>	<b>(21,955)</b>	<b>17,946</b>	<b>(9,871)</b>	<b>8,075</b>
Transfer between funds		(5,936)	5,936	-	(10,514)	10,514	-
<b>Net movement in funds</b>		<b>(19,567)</b>	<b>(2,388)</b>	<b>(21,955)</b>	<b>7,432</b>	<b>643</b>	<b>8,075</b>
<b>Reconciliation of funds:</b>							
	9						
Total funds brought forward		92,236	6,392	98,628	84,804	5,749	90,553
<b>Total funds carried forward</b>		<b>72,669</b>	<b>4,004</b>	<b>76,673</b>	<b>92,236</b>	<b>6,392</b>	<b>98,628</b>

The notes on pages 7 to 11 form part of these accounts

## HOME-START NEWARK

## BALANCE SHEET

31 MARCH 2025

	Note	£	2025	£	2024	£
<b>Fixed assets:</b>						
Tangible assets	6			4,902		4,869
<b>Current assets:</b>						
Stock of chromebooks		2,990			8,671	
Debtors and prepayments	7	982			1,180	
Cash at bank and in hand		113,518			136,421	
Total current assets		117,490			146,272	
<b>Liabilities:</b>						
Creditors: Amounts falling due within one year	8	25,804			32,598	
Net current assets				91,686		113,674
<b>Total net assets</b>				96,588		118,543
<b>The funds of the charity:</b>	9					
Unrestricted funds				72,669		92,236
Restricted -						
HSUK Caring for Families Fund		-			363	
HSUK Emergency Fund – Capital		309			371	
National Lottery Covid Fund – Capital		392			470	
HSUK Funding Strategy		-			152	
Magic Little Grants		443			511	
NSDC Ollerton Pilot – Capital		984			1,124	
HSUK – Chromebook		209			239	
HSUK – Chromebook		269			-	
The National Lottery, Cost of Living		-			980	
Star Trust		1,291			2,051	
Feeds Baby Formula		107		4,004	131	6,392
Revaluation reserve				19,915		19,915
<b>Total charity funds</b>				96,588		118,543

The directors are satisfied that the company is entitled to exemption from audit under Section 477 of the Companies Act 2006 and that no members have requested an audit pursuant to Section 476 of the Act.

The directors acknowledge their responsibilities for:

- ensuring that the company keeps accounting records which comply with Section 386 of the Companies Act 2006; and
- preparing accounts which give a true and fair view of the state of affairs of the company as at the end of each financial year and of its profit and loss for the financial year in accordance with the requirements of Section 396 of the Companies Act 2006, and which otherwise comply with the requirements of the Act relating to accounts, so far as applicable to the company.

The accounts have been prepared in accordance with the special provisions relating to companies subject to the small companies regime within part 15 of the Companies Act 2006.

TERRY O'DEA

) Directors

KAREN SOUTHERN

Approved by the board on 8 September 2025

5433103

Company number

The notes on pages 7 to 11 form part of these accounts

## HOME-START NEWARK

## NOTES

31 MARCH 2025

**1. ACCOUNTING POLICIES****a) Basis of accounting**

The accounts have been prepared under the historical cost convention and in accordance with the Charities Statement of Recommended Practice (FRS102) (effective January 2015).

**b) Grant income and donations**

Grants are treated as income in the year to which they relate; donations are accounted for as received.

**c) Expenses**

Expenditure is accounted for as incurred.

**d) Tangible fixed assets**

Fixed assets are depreciated in equal annual instalments over their expected useful life of ten years.

**e) Pension scheme**

The company operates a defined contribution scheme and contributions are charged against profits in the period when due.

**2. STAFF COSTS**

	2025	2024
Average number of employees	7	7
	-----	-----
	£	£
Wages	100,258	97,505
Pension contributions	4,586	4,318
	-----	-----
	104,844	101,823
	-----	-----

**HOME-START NEWARK**  
**NOTES**  
**YEAR ENDED 31 MARCH 2025**

**3. INCOME AND ENDOWMENTS**

	Unrestricted funds £	2025 Restricted funds £	Total funds £	Unrestricted funds £	2024 Restricted funds £	Total funds £
(a) <u>Donations and legacies</u>						
Core funding - Notts County Council – Local						
Communities Fund	10,524	-	10,524	10,524	-	10,524
NCC Homes for Ukraine Fund	-	-	-	-	2,189	2,189
Newark and Sherwood DC	-	30,966	30,966	14,690	-	14,690
NSDC – Ollerton Pilot	-	-	-	-	14,370	14,370
Group funding- Children in Need		10,000	10,000		10,000	10,000
Other grants - Domlal Foundation – Step up for School						
Service	-	23,710	23,710	-	21,313	21,313
Boots	-	-	-	-	10,000	10,000
Star Trust	-	-	-	-	2,736	2,736
Asda	-	-	-	400	-	400
The National Lottery Community Fund	-	-	-	-	20,245	20,245
Charities Trust	-	-	-	300	-	300
Magic Little Grants	-	-	-	-	500	500
HSUK Cadent	1,800	-	1,800	-	-	-
Lincs Co-op Communities Fund	542	-	542	-	-	-
Southwell Lions	-	500	500	-	-	-
Lashes Foundation	-	500	500	-	-	-
BNA Charitable Incorporated	-	700	700	-	-	-
John Lewis Group Summer Fund	-	750	750	-	-	-
Donations						
General	38,785	-	38,785	40,147	-	40,147
Notts County Council, Councillor's						
Divisional Fund, Councillor Keith Girling	-	-	-	-	820	820
Feeds Baby Formula	-	100	100	-	250	250
Volunteer donations	71	-	71	249	-	249
Donations for families	1,280	-	1,280	-	-	-
Gift Aid tax refund on donations	109	-	109	229	-	229
	53,111	67,226	120,337	66,539	82,423	148,962
(b) <u>Other trading activities</u>						
Fund raising efforts	1,941	-	1,941	2,292	-	2,292
(c) <u>Investments</u>						
Interest	1,436	-	1,436	1,409	-	1,409
<b>Total incoming resources</b>	<b>56,488</b>	<b>67,226</b>	<b>123,714</b>	<b>70,240</b>	<b>82,423</b>	<b>152,663</b>

**HOME-START NEWARK**  
**NOTES**  
**YEAR ENDED 31 MARCH 2025**

**4. EXPENDITURE**

	Unrestricted funds £	2025 Restricted funds £	Total funds £	Unrestricted funds £	2024 Restricted funds £	Total funds £
(a) <u>Raising funds</u>						
Fundraising expenses	500	-	500	768	14	782
(b) <u>Charitable activities</u>						
Activities and trips	743	2,617	3,360	1,334	2,705	4,039
AGM and trustee expenses	-	-	-	90	-	90
Annual fee	1,854	878	2,732	1,109	1,369	2,478
Consultancy fees	133	152	285	-	855	855
Donation of Chromebooks	5,681	(299)	5,382	4,784	-	4,784
Donations to families	1,280	-	1,280	-	-	-
Hardship fund	45	-	45	-	-	-
Insurance	1,391	-	1,391	1,375	-	1,375
Miscellaneous	237	-	237	24	-	24
Play equipment and materials	455	661	1,116	-	1,018	1,018
Publicity and advertising	274	60	334	485	443	928
Refreshments	76	446	522	63	828	891
Rent and premises hire	2,983	10,458	13,441	2,833	12,741	15,574
Safety equipment	-	68	68	-	734	734
Software and IT support	2,109	427	2,536	1,521	255	1,776
Staff expenses	404	1,105	1,509	346	1,816	2,162
Staff training	27	425	452	-	-	-
Stationery and office equipment	778	20	798	576	132	708
Telephone and postage	1,422	272	1,694	899	141	1,040
Volunteer expenses	338	858	1,196	633	915	1,548
Volunteer training	31	21	52	-	-	-
Wages	47,803	57,041	104,844	33,805	68,018	101,823
	68,064	75,210	143,274	49,877	91,970	141,847
(c) <u>Other</u>						
Accountancy charges	720	-	720	840	-	840
Depreciation	767	-	767	687	-	687
Independent Examiner's fee	408	-	408	432	-	432
Amortisation of capital funds	(340)	340	-	(310)	310	-
	1,555	340	1,895	1,649	310	1,959
<b>Total expenditure</b>	<b>70,119</b>	<b>75,550</b>	<b>145,669</b>	<b>52,294</b>	<b>92,294</b>	<b>144,588</b>

## HOME-START NEWARK

## NOTES

31 MARCH 2025

**5. TAXATION**

As a Registered Charity, the company is exempt from UK Corporation Tax.

**6. TANGIBLE FIXED ASSETS**

	<u>Equipment</u> £
<u>Cost</u>	
1 April 2024	7,284
Additions	800
	-----
31 March 2025	8,084
	-----
<u>Depreciation</u>	
1 April 2024	2,415
Charged	767
	-----
31 March 2025	3,182
	-----
<u>Net book value</u>	
31 March 2025	4,902
	-----
31 March 2024	4,869
	-----

**7. DEBTORS: AMOUNTS FALLING DUE WITHIN ONE YEAR**

	2025	2024
	£	£
Trade debtors	-	137
Prepayments	873	951
Tax refund on Gift Aid donations	109	229
	-----	-----
	982	1,180
	-----	-----

**8. CREDITORS: AMOUNTS FALLING DUE WITHIN ONE YEAR**

Trade creditors	2,405	3,682
Social security and other taxes	1,715	1,398
Accruals and deferred income	21,684	27,518
	-----	-----
	25,804	32,598
	-----	-----

## HOME-START NEWARK

## NOTES

31 MARCH 2025

## 9. RESERVES

	2025	2024
	£	£
a) <u>Revaluation reserve</u>		
Balance 1 April 2024 and 31 March 2025	19,915	19,915
	-----	-----

The revaluation reserve is the value of assets less liabilities taken over from the old unincorporated charity.

b) Outline summary of fund movements

	Fund balances Brought forward	Income	Expenditure	Transfers	Gains and Losses	Fund balance Carried forward
	£	£	£	£	£	£
Unrestricted funds	92,236	56,488	(70,119)	(5,936)	-	72,669
Restricted –						
NSDC	-	30,966	(30,966)	-	-	-
Children in Need	-	10,000	(15,665)	5,665	-	-
Step up for School Service	-	23,710	(23,981)	271	-	-
HSUK Caring for Families Fund	363	-	(363)	-	-	-
HSUK Emergency Fund	371	-	(62)	-	-	309
National Lottery Covid Fund	470	-	(78)	-	-	392
HSUK Funding Strategy	152	-	(152)	-	-	-
Magic Little Grants	511	-	(68)	-	-	443
BNA Charitable Incorporated	-	700	(700)	-	-	-
NSDC Ollerton Pilot	1,124	-	(140)	-	-	984
HSUK – Chromebook	239	-	(30)	-	-	209
HSUK – Chromebook	-	-	269	-	-	269
The National Lottery, Cost of Living	980	-	(980)	-	-	-
Star Trust	2,051	-	(760)	-	-	1,291
Feeds Baby Formula	131	100	(124)	-	-	107
Southwell Lions	-	500	(500)	-	-	-
Lashes Foundation	-	500	(500)	-	-	-
John Lewis Group Summer Fund	-	750	(750)	-	-	-
Revaluation reserve	19,915	-	-	-	-	19,915
	-----	-----	-----	-----	-----	-----
	118,543	123,714	(145,669)	-	-	96,588
	-----	-----	-----	-----	-----	-----

Unrestricted funds are those available for the general purposes of the charity. The restricted funds are grants from Children in Need, Domlall Foundation, Home-Start UK/DCMS Comms, The National Lottery, Magic Little Grants, NSDC, NCC, BNA Charitable Incorporated, Star Trust, Feeds, Southwell Lions, Lashes Foundation and John Lewis, which may be spent only on the projects for which they were given.

## 10. TRUSTEES' EXPENSES, REMUNERATION AND BENEFITS

No trustee expenses have been incurred.

No trustees have been paid any remuneration or received any other benefit from an employment with Home-Start Newark.

**HOME-START NEWARK**

**YMCA NEWARK & SHERWOOD COMMUNITY ACTIVITY VILLAGE,  
LORD HAWKE WAY, NEWARK, NOTTINGHAMSHIRE.**

**ACCOUNTS**

**YEAR ENDED 31 MARCH 2025**

SECRETARY S.E. Grant	REGISTERED OFFICE -	YMCA Newark & Sherwood Community Activity Village, Lord Hawke Way, Newark, Nottinghamshire. NG24 4FH
COMPANY NUMBER 5433103		
CHARITY NUMBER 1109551		

**INDEX**

	<u>Page</u>
Trustees'/Directors' report	1 - 2
Independent Examiner's report	3
Profit and loss account	4
Statement of Financial Activities	5
Balance sheet	6
Notes	7 - 11

**David Pattinson, Chartered Accountants,  
233, London Road, Balderton, Newark, Nottinghamshire.**

## HOME-START NEWARK

### TRUSTEES' ANNUAL REPORT

The trustees present their report and the accounts of the company for the year ended 31 March 2025.

#### OBJECTIVES AND ACTIVITIES

The objects of the company are to increase the confidence and independence of the family by:

- a) offering support, friendship and practical assistance;
- b) visiting families in their own homes, where the dignity and identity of each adult and child can be respected and protected;
- c) reassuring parents that difficulties in bringing up children are not unusual and encouraging them to enjoy family life;
- d) developing a relationship with the family in which time can be shared and understanding can be developed: the approach is flexible to take account of different needs;
- e) encouraging parents' strengths and emotional well-being for the ultimate benefit of their children;
- f) encouraging families to widen their network of relationships and to use effectively the support and services available within the community.

#### Our aims and objectives

In order to achieve our vision and strengthen our organisation Home-Start Newark will pursue the following aims and objectives:

**Our delivery:** Continue to provide tailored support to families in a professional and efficient manner

- Ensure systems, policies and processes are maintained to provide effective operations
- Ensure effective governance and financial control is maintained
- Ensure the safeguarding of children remains at the core of all areas of work

**Our Services:** Ensure our services are as appropriate, effective and responsive as they can be within the changing social, political and pandemic situation.

- Keep our services under frequent review to ensure we are able to respond rapidly to developments relating to the global pandemic changing need and identify ways they may be refined or adapted to meet
- Continue to engage with families in a range of ways to obtain feedback regarding our services to ensure we remain responsive to changing needs.

**Our People:** Ensure we continue to have motivated and engaged volunteers and staff in place to enable delivery of our services

- Maintain a watchful eye on volunteer numbers ensuring recruitment occurs at appropriate levels to maintain sufficient numbers to deliver our home visiting service and group support facility and consider new approaches to volunteer recruitment
- Ensure that Home-Start Newark continues to be an organisation of choice for people to work and volunteer for by offering relevant ongoing training, support and development opportunities
- Ensure our equalities and diversity policy is central to all staff and volunteer recruitment, development and support plans.

**Our Finances:** Ensure that our organisation is financially secure now and in the future

- Develop and maintain a clear strategy for strengthening our financial position including accessing grants, fundraising activities and one-off funding bids in line with our ethical fundraising policy
- Continue to closely observe accounts, actively working to anticipate possible future variables in income and expenditure

**Our relationships:** Ensure we maximise our opportunities to develop strategic partnerships that will advance our vision

- Consider how relationships with key stakeholders could be developed by exploring local collaborative working or reciprocal support and signposting
- Work to improve our relationship with local businesses, networking at local events and actively engaging with them where appropriate.

**Our Profile:** Ensure we maintain a strong local and regional reputation

- Ensure our marketing and communication materials are fully updated in line with Home-Start UK expectations to ensure continued visibility and providing effective materials for publicity purposes and funding bids
- Take steps to raise our profile with local businesses
- Develop our social media presence, targeting relevant material towards differing audiences

## HOME-START NEWARK

### TRUSTEES' ANNUAL REPORT

#### ACHIEVEMENTS AND PERFORMANCE

During the year, Home-Start Newark has continued the provision of its core Home Visiting Service, Family Group Service and Step Up For School (SUFS) Service, as well as continuing to develop new plans and projects to help families in the district in line with stated objectives.

In increasingly difficult times, we are delighted to have continued to receive funding from Newark and Sherwood District Council, Nottinghamshire County Council, as well as local businesses and donors, grant funding, individual donors and supporters and fundraising activities.

We thank staff, volunteers, trustees and everyone who helps support Home-Start Newark in the challenging work it does.

Sara Grant  
Manager

#### FINANCIAL REVIEW

There was a net deficit of £21,955 for the year ended 31 March 2025. Total funds carried forward are £76,673 plus the revaluation reserve of £19,915.

It is the policy of Home-Start Newark to build and retain a reserve that would:

- a) Ensure the organisation could meet all outstanding liabilities should core funding be withdrawn at short notice.
- b) Ensure the organisation could continue operating for three months should core funding be significantly reduced. A significant reduction has been taken to mean a 50% cut. During the year in question all efforts would be made to obtain alternative funding to continue the service in the future.

#### STRUCTURE, GOVERNANCE AND MANAGEMENT

Home-Start Newark is a company limited by Guarantee, the governing document being the Memorandum and Articles of Association.

Trustees are recruited from the local area and are people of good standing within the community, with the appropriate skills to support the scheme.

#### REFERENCE AND ADMINISTRATIVE DETAILS

The directors in office in the period and up to the date of this report, who are also trustees, were as follows:

- a) J. Geraghty, H. Lockwood, T O'Dea, I.M. Barber, S. Smith and K.J. Southern served throughout the year.
- b) G. Bukel and C. Willey resigned during the year.

This report has been prepared in accordance with the special provisions relating to companies subject to the small companies regime within part 15 of the Companies Act 2006, and the Charities Statement of Recommended Practice (FRS102)(effective January 2015).

By order of the Board on 8 September 2025

Secretary

\_\_\_\_\_ SARA GRANT



**INDEPENDENT EXAMINER'S REPORT TO  
THE TRUSTEES OF HOME-START NEWARK**

I report on the accounts of Home-Start Newark, for the year ended 31 March 2025 which are set out on page 4 to 11.

**Respective responsibilities of trustees and examiner**

As the Charity's trustees you are responsible for the preparation of the accounts; you consider that the audit requirement of section 144 of the Charities Act 2011 (the Charities Act) does not apply, and that an independent examination is needed.

It is my responsibility to:

- examine the accounts under Section 145 of the Charities Act,
- to follow the procedures laid down in the general Directions given by the Charity Commission (under section 145(5)(b) of the Charities Act), and
- to state whether particular matters have come to my attention.

**Basis of independent examiner's statement**

My examination was carried out in accordance with the General Directions given by the Charity Commissioners. An examination includes a review of the accounting records kept by the Charity and a comparison of the accounts presented with those records. It also includes consideration of any unusual items or disclosures in the accounts, and seeking explanations from the trustees concerning any such matters. The procedures undertaken do not provide all the evidence that would be required in an audit, and consequently no opinion is given as to whether the accounts present a 'true and fair' view and the report is limited to those matters set out in the statement below.

**Independent examiner's statement**

In connection with my examination, no matter has come to my attention:

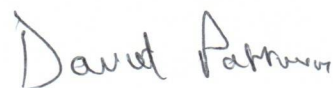
(1) which gives me reasonable cause to believe that in any material respect the requirements:

- to keep accounting records in accordance with section 130 of the Charities Act; and
- to prepare accounts which accord with the accounting records and comply with the accounting requirements of the Charities Act.

have not been met; or

(2) to which, in my opinion, attention should be drawn in order to enable a proper understanding of the accounts to be reached.

David Pattinson, Chartered Accountant  
233, London Road,  
Balderton,  
Newark,  
Nottinghamshire.  
NG24 3HA



9 September 2025

**HOME-START NEWARK**  
**PROFIT AND LOSS ACCOUNT**  
**YEAR ENDED 31 MARCH 2025**

	2025	2024
	£	£
TURNOVER	122,278	151,254
Administrative expenses	145,669	144,588
OPERATING PROFIT/(LOSS)	(23,391)	6,666
Interest receivable and similar income	1,436	1,409
PROFIT/(LOSS) ON ORDINARY ACTIVITIES BEFORE TAXATION	(21,955)	8,075
Tax on profit on ordinary activities	-	-
PROFIT/(LOSS) FOR THE FINANCIAL YEAR AFTER TAXATION	(21,955)	8,075
Retained surplus brought forward	98,628	90,553
RETAINED SURPLUS CARRIED FORWARD	76,673	98,628

The notes on pages 7 to 11 form part of these accounts

## HOME-START NEWARK

## STATEMENT OF FINANCIAL ACTIVITIES

YEAR ENDED 31 MARCH 2025

	Note	2025		Total	2024		Total
		Unrestricted funds £	Restricted funds £	funds £	Unrestricted funds £	Restricted funds £	funds £
<b>Income and endowments from:</b>							
	3						
Donations and legacies		53,111	67,226	120,337	66,539	82,423	148,962
Other trading activities		1,941	-	1,941	2,292	-	2,292
Investments		1,436	-	1,436	1,409	-	1,409
<b>Total</b>		<b>56,488</b>	<b>67,226</b>	<b>123,714</b>	<b>70,240</b>	<b>82,423</b>	<b>152,663</b>
<b>Expenditure on:</b>							
	4						
Raising funds		500	-	500	768	14	782
Charitable activities		68,064	75,210	143,274	49,877	91,970	141,847
Other		1,555	340	1,895	1,649	310	1,959
<b>Total</b>		<b>70,119</b>	<b>75,550</b>	<b>145,669</b>	<b>52,294</b>	<b>92,294</b>	<b>144,588</b>
<b>Net income/(expenditure)</b>		<b>(13,631)</b>	<b>(8,324)</b>	<b>(21,955)</b>	<b>17,946</b>	<b>(9,871)</b>	<b>8,075</b>
Transfer between funds		(5,936)	5,936	-	(10,514)	10,514	-
<b>Net movement in funds</b>		<b>(19,567)</b>	<b>(2,388)</b>	<b>(21,955)</b>	<b>7,432</b>	<b>643</b>	<b>8,075</b>
<b>Reconciliation of funds:</b>							
	9						
Total funds brought forward		92,236	6,392	98,628	84,804	5,749	90,553
<b>Total funds carried forward</b>		<b>72,669</b>	<b>4,004</b>	<b>76,673</b>	<b>92,236</b>	<b>6,392</b>	<b>98,628</b>

The notes on pages 7 to 11 form part of these accounts

## HOME-START NEWARK

## BALANCE SHEET

31 MARCH 2025

	Note	£	2025	£	2024	£
<b>Fixed assets:</b>						
Tangible assets	6			4,902		4,869
<b>Current assets:</b>						
Stock of chromebooks		2,990			8,671	
Debtors and prepayments	7	982			1,180	
Cash at bank and in hand		113,518			136,421	
Total current assets		117,490			146,272	
<b>Liabilities:</b>						
Creditors: Amounts falling due within one year	8	25,804			32,598	
Net current assets				91,686		113,674
<b>Total net assets</b>				96,588		118,543
<b>The funds of the charity:</b>	9					
Unrestricted funds				72,669		92,236
Restricted -						
HSUK Caring for Families Fund		-			363	
HSUK Emergency Fund – Capital		309			371	
National Lottery Covid Fund – Capital		392			470	
HSUK Funding Strategy		-			152	
Magic Little Grants		443			511	
NSDC Ollerton Pilot – Capital		984			1,124	
HSUK – Chromebook		209			239	
HSUK – Chromebook		269			-	
The National Lottery, Cost of Living		-			980	
Star Trust		1,291			2,051	
Feeds Baby Formula		107		4,004	131	6,392
Revaluation reserve				19,915		19,915
<b>Total charity funds</b>				96,588		118,543

The directors are satisfied that the company is entitled to exemption from audit under Section 477 of the Companies Act 2006 and that no members have requested an audit pursuant to Section 476 of the Act.

The directors acknowledge their responsibilities for:

- ensuring that the company keeps accounting records which comply with Section 386 of the Companies Act 2006; and
- preparing accounts which give a true and fair view of the state of affairs of the company as at the end of each financial year and of its profit and loss for the financial year in accordance with the requirements of Section 396 of the Companies Act 2006, and which otherwise comply with the requirements of the Act relating to accounts, so far as applicable to the company.

The accounts have been prepared in accordance with the special provisions relating to companies subject to the small companies regime within part 15 of the Companies Act 2006.

TERRY O'DEA

) Directors

KAREN SOUTHERN

Approved by the board on 8 September 2025

5433103

Company number

The notes on pages 7 to 11 form part of these accounts

## HOME-START NEWARK

## NOTES

31 MARCH 2025

**1. ACCOUNTING POLICIES****a) Basis of accounting**

The accounts have been prepared under the historical cost convention and in accordance with the Charities Statement of Recommended Practice (FRS102) (effective January 2015).

**b) Grant income and donations**

Grants are treated as income in the year to which they relate; donations are accounted for as received.

**c) Expenses**

Expenditure is accounted for as incurred.

**d) Tangible fixed assets**

Fixed assets are depreciated in equal annual instalments over their expected useful life of ten years.

**e) Pension scheme**

The company operates a defined contribution scheme and contributions are charged against profits in the period when due.

**2. STAFF COSTS**

	2025	2024
Average number of employees	7	7
	-----	-----
	£	£
Wages	100,258	97,505
Pension contributions	4,586	4,318
	-----	-----
	104,844	101,823
	-----	-----



**HOME-START NEWARK**  
**NOTES**  
**YEAR ENDED 31 MARCH 2025**

**4. EXPENDITURE**

	Unrestricted funds £	2025 Restricted funds £	Total funds £	Unrestricted funds £	2024 Restricted funds £	Total funds £
(a) <u>Raising funds</u>						
Fundraising expenses	500	-	500	768	14	782
(b) <u>Charitable activities</u>						
Activities and trips	743	2,617	3,360	1,334	2,705	4,039
AGM and trustee expenses	-	-	-	90	-	90
Annual fee	1,854	878	2,732	1,109	1,369	2,478
Consultancy fees	133	152	285	-	855	855
Donation of Chromebooks	5,681	(299)	5,382	4,784	-	4,784
Donations to families	1,280	-	1,280	-	-	-
Hardship fund	45	-	45	-	-	-
Insurance	1,391	-	1,391	1,375	-	1,375
Miscellaneous	237	-	237	24	-	24
Play equipment and materials	455	661	1,116	-	1,018	1,018
Publicity and advertising	274	60	334	485	443	928
Refreshments	76	446	522	63	828	891
Rent and premises hire	2,983	10,458	13,441	2,833	12,741	15,574
Safety equipment	-	68	68	-	734	734
Software and IT support	2,109	427	2,536	1,521	255	1,776
Staff expenses	404	1,105	1,509	346	1,816	2,162
Staff training	27	425	452	-	-	-
Stationery and office equipment	778	20	798	576	132	708
Telephone and postage	1,422	272	1,694	899	141	1,040
Volunteer expenses	338	858	1,196	633	915	1,548
Volunteer training	31	21	52	-	-	-
Wages	47,803	57,041	104,844	33,805	68,018	101,823
	68,064	75,210	143,274	49,877	91,970	141,847
(c) <u>Other</u>						
Accountancy charges	720	-	720	840	-	840
Depreciation	767	-	767	687	-	687
Independent Examiner's fee	408	-	408	432	-	432
Amortisation of capital funds	(340)	340	-	(310)	310	-
	1,555	340	1,895	1,649	310	1,959
<b>Total expenditure</b>	<b>70,119</b>	<b>75,550</b>	<b>145,669</b>	<b>52,294</b>	<b>92,294</b>	<b>144,588</b>

## HOME-START NEWARK

## NOTES

31 MARCH 2025

**5. TAXATION**

As a Registered Charity, the company is exempt from UK Corporation Tax.

**6. TANGIBLE FIXED ASSETS**

	<u>Equipment</u> £
<u>Cost</u>	
1 April 2024	7,284
Additions	800
	-----
31 March 2025	8,084
	-----
<u>Depreciation</u>	
1 April 2024	2,415
Charged	767
	-----
31 March 2025	3,182
	-----
<u>Net book value</u>	
31 March 2025	4,902
	-----
31 March 2024	4,869
	-----

**7. DEBTORS: AMOUNTS FALLING DUE WITHIN ONE YEAR**

	2025	2024
	£	£
Trade debtors	-	137
Prepayments	873	951
Tax refund on Gift Aid donations	109	229
	-----	-----
	982	1,180
	-----	-----

**8. CREDITORS: AMOUNTS FALLING DUE WITHIN ONE YEAR**

Trade creditors	2,405	3,682
Social security and other taxes	1,715	1,398
Accruals and deferred income	21,684	27,518
	-----	-----
	25,804	32,598
	-----	-----

## HOME-START NEWARK

## NOTES

31 MARCH 2025

## 9. RESERVES

	2025	2024
	£	£
a) <u>Revaluation reserve</u>		
Balance 1 April 2024 and 31 March 2025	19,915	19,915
	-----	-----

The revaluation reserve is the value of assets less liabilities taken over from the old unincorporated charity.

b) Outline summary of fund movements

	Fund balances Brought forward	Income	Expenditure	Transfers	Gains and Losses	Fund balance Carried forward
	£	£	£	£	£	£
Unrestricted funds	92,236	56,488	(70,119)	(5,936)	-	72,669
Restricted –						
NSDC	-	30,966	(30,966)	-	-	-
Children in Need	-	10,000	(15,665)	5,665	-	-
Step up for School Service	-	23,710	(23,981)	271	-	-
HSUK Caring for Families Fund	363	-	(363)	-	-	-
HSUK Emergency Fund	371	-	(62)	-	-	309
National Lottery Covid Fund	470	-	(78)	-	-	392
HSUK Funding Strategy	152	-	(152)	-	-	-
Magic Little Grants	511	-	(68)	-	-	443
BNA Charitable Incorporated	-	700	(700)	-	-	-
NSDC Ollerton Pilot	1,124	-	(140)	-	-	984
HSUK – Chromebook	239	-	(30)	-	-	209
HSUK – Chromebook	-	-	269	-	-	269
The National Lottery, Cost of Living	980	-	(980)	-	-	-
Star Trust	2,051	-	(760)	-	-	1,291
Feeds Baby Formula	131	100	(124)	-	-	107
Southwell Lions	-	500	(500)	-	-	-
Lashes Foundation	-	500	(500)	-	-	-
John Lewis Group Summer Fund	-	750	(750)	-	-	-
Revaluation reserve	19,915	-	-	-	-	19,915
	-----	-----	-----	-----	-----	-----
	118,543	123,714	(145,669)	-	-	96,588
	-----	-----	-----	-----	-----	-----

Unrestricted funds are those available for the general purposes of the charity. The restricted funds are grants from Children in Need, Domlall Foundation, Home-Start UK/DCMS Comms, The National Lottery, Magic Little Grants, NSDC, NCC, BNA Charitable Incorporated, Star Trust, Feeds, Southwell Lions, Lashes Foundation and John Lewis, which may be spent only on the projects for which they were given.

## 10. TRUSTEES' EXPENSES, REMUNERATION AND BENEFITS

No trustee expenses have been incurred.

No trustees have been paid any remuneration or received any other benefit from an employment with Home-Start Newark.