

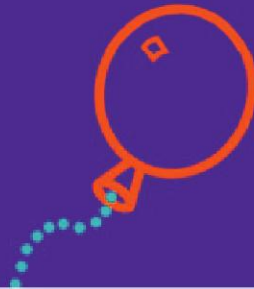
# HOME START

Newark

2022-2023  
ANNUAL REPORT



Because  
tomorrow  
starts today



Home-Start Newark, YMCA, Newark & Sherwood Community and Activity Village,  
Lord Hawke Way, Newark, NG24 4FH  
[www.homestartnewark.co.uk](http://www.homestartnewark.co.uk). 01636 705011

A company limited by guarantee. Registered in England and Wales company No. 5433103  
Registered Charity No. 1109551

## **THE TEAM**

### **The Trustee Committee:**

**Terry O'Dea** - Chair  
**Karen Southern** - Treasurer  
**Cynd Willey** - Trustee  
**Howard Lockwood** - Trustee  
**Jane Geraghty** - Trustee

**Company Secretary:** Sara Grant

### **Staff:**

**Sara Grant** - Manager  
**Kim Shirley** - Administrator/Fundraiser  
**Julia Sumner** - Group Family Support Worker  
**Michelle Bentley** - Group Children's Worker  
**Rachel Boydell** - Family Support Co-Ordinator  
**Kay Davidge** - Family Support Co-Ordinator  
**Claire Flanagan** - Family Support Co-Ordinator

## THE CHAIR OF TRUSTEES REPORT

Hello and thank you for your interest in Home-Start Newark's Annual Report for 2022-2023 I feel this has been a positive year for our scheme despite challenges faced by the whole team. Fortunately there has been stability in staff and Trustees which I believe has helped us face these challenges and as we have welcomed new appointments in both areas I feel that we are well set up to face what the future may hold.

At the centre of our work are the families that we support who may be facing difficult and varied problems. These families come from all levels of society including those recently settled in our community and our Volunteers with ongoing support from Family Support Co-ordinators continue to make a massive change to their lives. We are obviously not able to share those successes with you but at monthly Board Meetings Trustees receive updates on problem faced and the progress made with the weekly support of Volunteers and we are humbled at what is achieved.

Family Group has gone from strength to strength and remains an important part of the lives of families that attend. By developing fun play and activities which encourage socialising, the team make a major contribution to our Step Up For School programme that works so well for other families in our home visiting programme.

Our Volunteers are brilliant and we thank them for their continuing support. A major challenge that we face is attracting people prepared to give up their time to support others. We are not alone in this as it seems that there are 1.5 million less volunteers in the charity sector than before the pandemic but we feel that we can provide great training, support and a sense of personal achievement for those working with us. If you are reading this and feel that it may be something that you or someone you know would find satisfying I would encourage contacting us to find out more.

You may not be surprised that the other major challenge that we face is funding our scheme. Many of our traditional funders are facing huge demands on their resources but we have been aware of this for some time and have been successful with new opportunities. We are very fortunate to receive funding and donations from businesses and private individuals and we really appreciate this support. We will of course continue to explore for more funding streams which can support our work.

Despite the challenges that we face we are optimistic about the future. Thank you for reading this and your support for our scheme.

**Terry O'Dea**  
Chair of Trustees

## THE TREASURER'S REPORT

Thanks to the generosity of local businesses, organisations, agencies and individuals in providing donations 2022-23 was a positive year financially. We received donations from an anonymous donor, grants from Children in need, the Domlal Foundation, Newark and Sherwood District Council and Nottingham County Council and these were gratefully received. In addition, we have received a number of donations from businesses and individuals through one off donations, regular giving, local giving through our website and easy fundraising. All of these were hugely appreciated and helped us continue to reach the families who need us.

Overall, income was £135,735, an increase of £64,111 from the previous year and expenses increased by £49,695 to £131,735. These figures reflect that we have expanded our services into new geographical areas of Ollerton, Boughton and Bilsthorpe and fully reopened our services following the pandemic.

The Charity showed a surplus of £4,000 in 2022-23 compared to a deficit of £10,416 in the previous year. Reserves carried forward total £110,468.

Home-Start Newark acknowledges that, compared to many charities, we are fortunate to be able to rely on both statutory and voluntary funding. We acknowledge the ever-changing funding climate that we are working with and are continually looking for new sources of funding to secure the ongoing services we provide to families. We also acknowledge the continued support of Newark & Sherwood District Council and Nottinghamshire County Council.

Thanks go to all our funders and supporters, including volunteers, staff and families and to local businesses for their help this year.

**Karen Southern**

## MANAGER'S REPORT

This has been a year of significant growth and development for Home-Start Newark, as our community moves from a pandemic into a cost of living crisis. We expanded our Home-Visiting service into new geographical areas - Ollerton, Boughton and Bilsthorpe. We have extended our holiday support activities at our Family Group and welcomed new volunteers and Trustees to our organisation. We moved into our new home at the YMCA, receiving warm and supportive welcome. Huge thanks to NSDC, our brilliant landlord for the last 4 years – we will miss our friends there.

It's been a year of successes. In June 2022, we were delighted to receive a 'Highly Commended' award in the Social Enterprise category, at the Newark Business Awards. On the same day we were voted Newark Business Club's Charity of the Quarter. We are grateful to have received generous support from local businesses and will be developing those relationships moving forward. Many thanks to all those who attended our 'Re-launch' event at our new home of the YMCA in November.

Working with local families is at the heart of all we do. We are so proud to be able to offer our vital services in new areas at this difficult time for families. With support from NSDC and the Coalfields Regeneration Trust, we started delivering support services in Ollerton, Boughton and Bilsthorpe from July 2022, via our new Family Support Co-ordinator Claire Flanagan. Our grateful thanks go to partner agencies in the area for their welcoming support. We are delighted to have received a further year's funding from NSDC to continue this work and reach more families than ever before.

Our Home-Visiting service has been sorely needed in the community over the last 12 months. We are so lucky to have such a brilliant and dedicated office team, going above and beyond in their support of local families. We have been able to offer practical support with free laptops to families (via Home-Start UK), free safety equipment where needed and many other small and regular practical donations to ease the pressure on families. Our staff and volunteers in Newark and in our newer areas are supporting families with complex and challenging life circumstances, including worries about child development/behaviour, domestic abuse, mental health support needs, financial hardship and isolation, and more.

Our Family Group and SUFS services have worked hard to respond to these needs, and more, in our local community. I can't commend these staff highly enough. Please see their own reports for a more detailed flavour of the work they have accomplished this year.

We had our first Family Summer Trip since the pandemic – to Manor Farm Park. It was just wonderful to see all our supported families having so much fun and creating happy memories together. We also reintroduced our Christmas Party at Robin Hood Entertainment and Soft Play this year. Santa came out of covid retirement and made a welcome return.

It really has been such a positive year and I feel humbled and proud to be leading this incredible organisation of hard working and committed people. I'd like to thank all staff for their passion, enthusiasm and flexibility. And to our wonderful Trustees who have led us through some very challenging times – thank you for your time, expertise and guidance. And most of all an enormous THANK YOU to all of our wonderful, wonderful volunteers. Every year when I reflect on this report, I am blown away by what our brilliant volunteers have achieved working in step with families, and how much of themselves they give. They are the beating heart of our organisation and I thank them from the bottom of mine.

**Sara Grant**, Manager

## Family's needs at Initial visit

77% of families struggled with Mental Health



20% of families needed financial support



33% struggled with managing Children's Development



62% of families struggled with isolation.



## Families who saw an improvement with support

Understandably, we have not seen our usual outcomes for families following Home Start Support, but the statistics clearly show that families require longer term support as we continue to be dealing with the Cost-of-Living crisis. The statistics below are taken from end of support scores or the latest review scores if they are still receiving our support.

25%  
Mental  
Health



35%  
Finances



25%  
Managing Children's  
Development



35%  
Isolation



## FAMILY GROUP

During the last 12 months we have supported 26 families who attended our family group and 33 children under 5 years of age. We have also run sibling sessions every school holiday and have had a further 22 older children attend. Our family group continues to work closely with the Family Support Co-Ordinator who coordinates the SUFS programme, to ensure that we develop activities jointly that will benefit the correct outcomes of; speech, language and communication, playing collaboratively; sharing and taking turns, plus building parental engagement with their child's learning.

We have opened the Family Group service each Tuesday and Thursday throughout every school holiday for older siblings in the holiday periods since the last AGM (excluding the Christmas period), we have offered approx. 33 hours of play and fun, these are hours where all family members have been able to come together to not only provide sanctuary for stressed parents but also to provide a healthy breakfast; something which we have seen become increasingly important as the cost of living crisis has deepened, as well as our usual range of play and development opportunities for children.

From feedback gathered, overwhelmingly our families still report hugely higher levels of stress, anxiety, and mental health issues across all family's members regardless of age since 2020. Therefore, we have made it a priority to always be accessible and reduce anxiety wherever possible. To this end we have a cereal breakfast table open immediately in case children arrive at group already hungry. We also offer a warm breakfast (Ready Brek) when mornings are cold. The staff team have continued to build meaningful relationships with families to signpost additional support as required.

We have also had visitors to family group every month in 2022 and into 2023, to introduce new experiences and stimulate children's creativity, expression, and confidence, and to encourage parental participation too. From Happy Play Dough to Toddle bops, to Peaceful Possums, and Jo Jingles; all have joined in! We run themed months around well-loved stories such as the Hungry Caterpillar building; song, craft, puppetry and learning around for example, healthy eating habits. We have already celebrated Valentine's Day, Red Nose Day, Easter, Mother's Day, National Story telling Week, Chinese New Year and more in 2023! We have many more plans for 2023 running again our successful Teddys Bears picnic and a Sports Day, plus a summer trip to White Post Farm. We have continued to build relationships with BeanBlock Café and Children's Centre to further signpost our families to places where they can get both peer support and professional support,

We are now 18 months into reopening and our families continue to feel that family group is a hugely valuable resource, children are joyful to attend, parents appreciate their input is valued and acted upon and that group is proving to be a space which is non judgemental and always compassionate, empathetic, and supportive finding the correct resources to each set of unique circumstances.

**Julia Sumner**

Group Family Support Worker



Celebrating Children in Need with families.



The children decorated the Christmas Tree for the Festival at St Magdalene Church in Newark.



Staff and Volunteer's put on a panto for family group.



Teddy Bear picnic at  
Sconce Park

Music session



Summer Trip to see the  
animals.



## STEP UP FOR SCHOOL

We are coming to the end of our first full year as our new rebranded project 'Step up For School'. With our new community-based approach, as well as embedding this into our core support, we have been supporting parents with school readiness, reassurance and resources to aid child development.

As we come out of the pandemic the impact it had on child development is still apparent. We have seen that children are still affected in their development by the lack of social interaction, inability to access services and being housebound in their early years. Thus, creating a more substantial need for this service to assist parents in helping their children develop and thrive.

Social interaction as well as speech, language and communication have been key themes in discussions with parents and in the support we have provided through this service. Parents have needed reassurance and guidance to know they are not alone, and how to best support their children in these areas.

### Community Engagement

This year we extended our SUFS into a range of community venues, with information, resources and support for parents not already accessing our services. This has helped us to build good local relationships with other services and to reach more parents. This 'light touch' provides a more accessible route to our service. The venues we have taken our

information stand to are: BeanBlock Café, Newark Library, Chatham Court Community Hub, Mary Magdalene Church Toddler Group.



## **Our community engagement has achieved the following great results:**

- Engaged with a total of 27 parents one to one.
- Gave out 39 activity packs with SUFS themes, including fine motor skills and speech, language and communication.
- Gave out 12 resources on toileting.
- Gave out 21 books that help with speech, language and communication, including themes on school and bedtime, sharing and social skills.
- Provided a fine motor skills threading activity, as well as colouring and mark making.

## **Core Support**

This year our core SUFS offer has supported many of our families and given Home-Visiting Volunteers tools and ideas to use when supporting their families. We also share ideas through social media and have sent further information on developmental milestones.

Each monthly newsletter provides seasonal themed activities, books, craft ideas and outdoor play to encourage development. We have a range of resources available to our Home-Visiting Volunteers on request including reward charts, toileting aids, certificates and behaviour management.

Our Home-Visiting Volunteers are now being provided with a SUFS Goody Bag with resources and activities to use on visits.

We are working with our Family Group to ensure all SUFS outcomes are covered by providing a wide range of fun activities to promote learning and development, including: sensory activities and yoga for fine and gross motor skills; singing for speech, language and communication, and encouraging independent living skills with hand washing and mealtimes.

We are looking to expand this further by reaching out to our new area Ollerton, Boughton and Bilsthorpe.

Watch this space!

## **Kay Davidge**

Family Support Co-Ordinator, Step Up For School





Terry and Sara attended the Newark Business Awards Dinner 10th June 2022. We received a Highly commended award for Best Social Enterprise 2022.

Kay was asked to open the new Newark B&M store on the 4th June 2022.



Our Patrons Mike and Nickie Pringle held a garden party on the 21st June to celebrate and thank our lovely volunteers.





The Quiz Night was held on the 18th November.

We received a €200.00 donation from EA-RS Group Ltd.



On the 22nd November 2022 we held our launch event at the YMCA.



## FUNDRAISER'S REPORT

We would like to say thank you to our statutory funders for their continued support, Newark and Sherwood District Council, Nottinghamshire County Council, as well as ongoing support from other funders: Children in Need, Magic Little Grants, BNA Charitable Incorporated, and the Coalfields Regeneration Trust. Thanks to Newark Business Club for their generous donation to us as one of their 'Charities of the Quarter'.

George Reed Memorial Fund supported us with another kind donation again this year. This donation is so appreciated and always welcome.

John Lewis/Waitrose Newark have continued to support during the year with a donation to our Family group.

Thank you to Salvation Army for their continued support at Christmas time with presents for our families. Our families are very grateful to receive gifts for their children and to help make their Christmas special.

Asda of Newark supported us during the year with donations of nappies to enable us to keep a supply for any of our families that were struggling.

Some of our Trustees and their families took part in the Newark Half Marathon in August and raised £1054.99. Thank you for your support.

I am really pleased to confirm that our popular Quiz Night made a return in November. We received a donation from EA-RS Group Ltd for £200.00 which brought the total raised to £1161.67. Our next Quiz Night is on the 16th June 2023.

Thank you to Southwell Minster who raised £711.92 from their Christmas Day service collection.

Thank you to Natwest bank in Grantham for their continued support collecting foreign coins. They raised £117.07 in June 2022.

We raised £147.10 from our stall on the Christmas Market selling bags with a surprise gift in them.

We would like to say a big thank you to those that donated to us during the year, we really appreciate your generosity. And thanks to everyone who has supported our cause through the Newark and Sherwood Community Lottery or Easyfundraising. We are looking forward to organising more events during our new financial year.

**Kim Shirley**

Administrator/Fundraiser

## FEEDBACK FROM FAMILIES AND VOLUNTEERS

She makes my day more positive when I have spoken to her.

Support has been absolutely brilliant and life changing.

The support from you has been amazing and turned into so much more than anticipated.



My volunteer was brilliant, so understanding and easy to talk to.

I feel a lot more positive managing my mental health thanks to Home Start.

Seeing the positive impact, we have on families is one of the most rewarding things I have done.

# THANK YOU Volunteers!

We couldn't do it without you

We would like to say a big thank you to all of our volunteers, your spirit, energy and commitment to Home-Start Newark makes a difference every day to our families. whether this is through working on the Board of Trustees, Home Visiting Volunteer, Group Volunteer or supporting us with Fundraising. Your support throughout the year is really appreciated.

If you would like to volunteer for Home Start Newark please get in contact with us via social media, telephone or our contact page on our website.

To be a Home-Start Newark Home Visiting volunteer, you will need to:

- **Be a parent or have parenting experience.**
- **Complete a DBS check at enhanced level.**
- **Complete our free volunteer preparation course. This is a blended course with initial on-line modules to complete at your own pace, followed by 3-day (school-day-friendly) face to face group learning.**
- **Be able to visit a family at home, once a week, for around two hours, to support them.**
- **Understand that your support for families is completely confidential.**
- **Have a non-judgemental attitude and understand about the pressures of bringing up a family.**

We are also looking for volunteers to help out at our family group on a Tuesday and/or Thursday mornings in central Newark. Full induction provided.

## ANNUAL STATISTICS

- We have supported 48 home visiting families
- 95 children have been supported
- 26 families have attended our family group
- 33 children have attended our family group
- During our Group holiday sessions 22 older children attended group
- 8 volunteers have provided support at family group
- 29 volunteers have supported home visiting families
- 2 new volunteers completed our Preparation course.
- Our Family Support workers supported 14 families with direct support.
- Our Volunteers and Trustees completed approximately 5514 hours of support.

## ANYONE can help us by.....

- **Using easyfundraising when shopping online.**

Make your purchases through:

[www.easyfundraising.org.uk/causes/homestartnewark](http://www.easyfundraising.org.uk/causes/homestartnewark).

*It won't cost you a penny and you can even save money by using their vouchers and discount codes. For every purchase you make Home-Start Newark will receive a donation of at least 5%!*

- **Make a donation through local giving:**

[www.localgiving.org/charity/homestartnewark](http://www.localgiving.org/charity/homestartnewark)

- **Please 'follow' us on Facebook:**

[www.facebook.com/homestartnewark](http://www.facebook.com/homestartnewark). We'll be able to reach more people!

- **Please 'follow' us on Twitter:**

[www.twitter.com/homestartnewark](http://www.twitter.com/homestartnewark)

- **Please 'follow' us on Instagram:**

[www.instagram.com/@homestartnewark](http://www.instagram.com/@homestartnewark). We'll be able to reach more people!

- **Check out our website: [www.homestartnewark.co.uk](http://www.homestartnewark.co.uk)**

For any more information please feel free to phone or contact us through facebook or our website.

## Can You Support Home-Start Newark?

- Could you train on our Preparation Course to enable you to support local families who are experiencing difficulties?
- Do you love playing with children? Could you volunteer at our Family Group? Boundless energy and enthusiasm required!
- Can you become a "Friend of Home-Start Newark" and donate £25 annually on a direct debit scheme?
- Could you organise your own fundraising event on our behalf eg a coffee and cake morning....?
- Could you become a Fundraising volunteer and help organise and attend events?
- Have you got the expertise to become a Trustee or Advisor for our Scheme?
- If any of these appeal to you please enquire now

**Thank**   
**you**



## Referrers Feedback

**“The service has been fantastic, to work together to support families. We have missed Home-Start in the local area and were really happy when it came back. The support to families has been fantastic, couldn’t fault it and we would be very sad without it. Always very welcoming and responsive. From a safeguarding point of view, we worked very effectively together in support of families.”**

School in Boughton

**“Thought you might like to know that I was talking to a tenant, and she told me that since attending our event and receiving advice from you about toileting her daughter hasn’t been having accidents overnight”.**

Step up for School

**Home-Start Newark were engaged, easy to communicate with, reliable and they also built a strong relationship with the family.**

**Their help was invaluable. Home-Start Newark are an asset to have on board.**

Social Care.

**The support offered is comprehensive and really does have a lasting positive impact upon parent(s) and children within our communities.**

**They often become an extended member of the family unit due to the frequency of the support and often the disclosure of very private, personal information that at times they have been holding onto not knowing how to deal with or who could help to deal with. Which a problem shared can often be a problem solved, impacting upon the mental health of said parent(s) and possible impact their low mood or stress creates a domino effect ....**

**Invaluable in addressing those often most vulnerable and in need, sometimes even in crisis, learning life skills that create a good foundation for the future family struggles and trials that may come up.**

**Fantastic service! Professional, compassionate, supportive, non-judgmental...I could go on!**

NSDC Housing

## AIMS

Home-Start Newark scheme is an independent voluntary organisation which works towards the increased confidence and independence of the family.

Home-Start Newark's Strategic Plan 2021-2024 identifies a range of specific and forward-thinking objectives.

The aims below provide an overview of these:

- **Develop our services to meet changing demands**
- **Invest in our people to get great results**
- **Work to create a strong financial future**
- **Build strong relationships and raise our profile**



**NEWARK &  
SHERWOOD**  
*DISTRICT COUNCIL*



the coalfields  
regeneration trust



**Nottinghamshire  
County Council**

**HOME-START NEWARK**

**YMCA NEWARK & SHERWOOD COMMUNITY ACTIVITY VILLAGE,  
LORD HAWKE WAY, NEWARK, NOTTINGHAMSHIRE.**

**ACCOUNTS**

**YEAR ENDED 31 MARCH 2023**

SECRETARY S.E. Grant	REGISTERED OFFICE -	YMCA Newark & Sherwood Community Activity Village, Lord Hawke Way, Newark, Nottinghamshire. NG24 4FH
COMPANY NUMBER 5433103		
CHARITY NUMBER 1109551		

**INDEX**

	<u>Page</u>
Trustees'/Directors' report	1 - 2
Independent Examiner's report	3
Profit and loss account	4
Statement of Financial Activities	5
Balance sheet	6
Notes	7 - 11

**David Pattinson, Chartered Accountants,  
233, London Road, Balderton, Newark, Nottinghamshire.**

**HOME-START NEWARK**  
**PROFIT AND LOSS ACCOUNT**  
**YEAR ENDED 31 MARCH 2023**

	2023	2022
	£	£
TURNOVER	135,202	71,389
Administrative expenses	131,735	82,040
OPERATING PROFIT/(LOSS)	<u>3,467</u>	<u>(10,651)</u>
Interest receivable and similar income	533	235
PROFIT/(LOSS) ON ORDINARY ACTIVITIES BEFORE TAXATION	<u>4,000</u>	<u>(10,416)</u>
Tax on profit on ordinary activities	-	-
PROFIT/(LOSS) FOR THE FINANCIAL YEAR AFTER TAXATION	<u>4,000</u>	<u>(10,416)</u>
Retained surplus brought forward	86,553	96,969
RETAINED SURPLUS CARRIED FORWARD	<u>90,553</u>	<u>86,553</u>

The notes on pages 7 to 11 form part of these accounts

**HOME-START NEWARK**  
**STATEMENT OF FINANCIAL ACTIVITIES**  
**YEAR ENDED 31 MARCH 2023**

	2023	2023	Total	2022	2022	Total
	Unrestricted	Restricted	funds	Unrestricted	Restricted	funds
	funds	funds	£	funds	funds	£
	£	£	£	£	£	£
Note						
<b>Income and endowments from:</b>						
3						
Donations and legacies	66,601	66,186	132,787	47,940	23,253	71,193
Other trading activities	2,415	-	2,415	196	-	196
Investments	533	-	533	235	-	235
<b>Total</b>	<b>69,549</b>	<b>66,186</b>	<b>135,735</b>	<b>48,371</b>	<b>23,253</b>	<b>71,624</b>
<b>Expenditure on:</b>						
4						
Raising funds	399	-	399	96	-	96
Charitable activities	61,521	67,801	129,322	48,134	32,513	80,647
Other	1,704	310	2,014	1,157	140	1,297
<b>Total</b>	<b>63,624</b>	<b>68,111</b>	<b>131,735</b>	<b>49,387</b>	<b>32,653</b>	<b>82,040</b>
<b>Net income/(expenditure)</b>	<b>5,925</b>	<b>(1,925)</b>	<b>4,000</b>	<b>(1,016)</b>	<b>(9,400)</b>	<b>(10,416)</b>
Transfer between funds	(3,219)	3,219	-	-	-	-
<b>Net movement in funds</b>	<b>2,706</b>	<b>1,294</b>	<b>4,000</b>	<b>(1,016)</b>	<b>(9,400)</b>	<b>(10,416)</b>
<b>Reconciliation of funds:</b>						
9						
Total funds brought forward	82,098	4,455	86,553	83,114	13,855	96,969
<b>Total funds carried forward</b>	<b>84,804</b>	<b>5,749</b>	<b>90,553</b>	<b>82,098</b>	<b>4,455</b>	<b>86,553</b>

The notes on pages 7 to 11 form part of these accounts

## HOME-START NEWARK

## BALANCE SHEET

31 MARCH 2023

	Note	£	2023	£	£	2022	£
<b>Fixed assets:</b>	6						
Tangible assets				5,556			2,244
<b>Current assets:</b>							
Stock of chromebooks		13,455			-		
Debtors and prepayments	7	1,211			3,558		
Cash at bank and in hand		121,704			135,226		
Total current assets		136,370			138,784		
<b>Liabilities:</b>							
Creditors: Amounts falling due within one year	8	31,458			34,560		
Net current assets				104,192			104,224
<b>Total net assets</b>				110,468			106,468
<b>The funds of the charity:</b>	9						
Unrestricted funds				84,804			82,098
Restricted -							
HSUK Caring for Families Fund		363			585		
HSUK Emergency Fund – Capital		433			495		
National Lottery Covid Fund – Capital		548			626		
HSUK Funding Strategy		755			2,547		
NCC Covid Recovery Fund		-			202		
Magic Little Grants		117			-		
BNA Charitable Incorporated		1,000			-		
Nottinghamshire County Council, Councillor's Divisional Fund, Councillor Keith Girling		1,000			-		
NSDC Ollerton Pilot – Capital		1,264			-		
HSUK – Chromebook		269		5,749	-		4,455
Revaluation reserve				19,915			19,915
<b>Total charity funds</b>				110,468			106,468

The directors are satisfied that the company is entitled to exemption from audit under Section 477 of the Companies Act 2006 and that no members have requested an audit pursuant to Section 476 of the Act.

The directors acknowledge their responsibilities for:

- ensuring that the company keeps accounting records which comply with Section 386 of the Companies Act 2006; and
- preparing accounts which give a true and fair view of the state of affairs of the company as at the end of each financial year and of its profit and loss for the financial year in accordance with the requirements of Section 396 of the Companies Act 2006, and which otherwise comply with the requirements of the Act relating to accounts, so far as applicable to the company.

The accounts have been prepared in accordance with the special provisions relating to companies subject to the small companies regime within part 15 of the Companies Act 2006.

T. O'DEA

) Directors

K. SOUTHERN

Approved by the board on 8 June 2023

Company number 5433103

The notes on pages 7 to 11 form part of these accounts

## HOME-START NEWARK

## NOTES

31 MARCH 2023

**1. ACCOUNTING POLICIES****a) Basis of accounting**

The accounts have been prepared under the historical cost convention and in accordance with the Charities Statement of Recommended Practice (FRS102) (effective January 2015).

**b) Grant income and donations**

Grants are treated as income in the year to which they relate; donations are accounted for as received.

**c) Expenses**

Expenditure is accounted for as incurred.

**d) Tangible fixed assets**

Fixed assets are depreciated in equal annual instalments over their expected useful life of ten years.

**e) Pension scheme**

The company operates a defined contribution scheme and contributions are charged against profits in the period when due.

**2. STAFF COSTS**

	2023	2022
Average number of employees	7	6
	-----	-----
	£	£
Wages	90,281	62,571
Pension contributions	4,023	2,921
HMRC JRS grants	-	(300)
	-----	-----
	94,304	65,192
	-----	-----

**HOME-START NEWARK**  
**NOTES**  
**YEAR ENDED 31 MARCH 2023**

**3. INCOME AND ENDOWMENTS**

	Unrestricted funds £	2023 Restricted funds £	Total funds £	Unrestricted funds £	2022 Restricted funds £	Total funds £
(a) <u>Donations and legacies</u>						
Core funding - Notts County Council	10,524	-	10,524	12,483	-	12,483
NCC Homes for Ukraine Fund	-	219	219	-	-	-
Newark and Sherwood DC	14,690	-	14,690	9,690	-	9,690
NSDC – Ollerton Pilot	-	14,370	14,370	-	-	-
Group funding- Children in Need	-	10,500	10,500	-	-	-
Other grants - NCC Covid Recovery	-	18,682	18,682	-	1,698	1,698
Domlal Foundation – Step up for School Service	-	19,126	19,126	-	18,355	18,355
HSUK Funding Strategy	-	-	-	-	3,200	3,200
Magic Little Grants	-	500	500	-	-	-
Coalfields Regeneration Trust	-	490	490	-	-	-
Donations						
General	41,094	-	41,094	25,925	-	25,925
BNA Charitable Incorporated	-	1,000	1,000	-	-	-
Nottinghamshire County Council, Councillor's Divisional Fund, Councillor Keith Girling	-	1,000	1,000	-	-	-
HSUK – Chromebook donated	-	299	299	-	-	-
Gift Aid tax refund on donations	293	-	293	(158)	-	(158)
	66,601	66,186	132,787	47,940	23,253	71,193
(b) <u>Other trading activities</u>						
Fund raising efforts	2,415	-	2,415	196	-	196
(c) <u>Investments</u>						
Interest	533	-	533	235	-	235
Total incoming resources	69,549	66,186	135,735	48,371	23,253	71,624

**HOME-START NEWARK**  
**NOTES**  
**YEAR ENDED 31 MARCH 2023**

**4. EXPENDITURE**

	Unrestricted funds £	2023 Restricted funds £	Total funds £	Unrestricted funds £	2022 Restricted funds £	Total funds £
(a) <u>Raising funds</u>						
Fundraising expenses	399	-	399	96	-	96
(b) <u>Charitable activities</u>						
Activities and trips	734	2,579	3,313	678	442	1,120
AGM and trustee expenses	82	-	82	-	-	-
Annual fee	724	600	1,324	1,366	351	1,717
Consultancy fees	-	1,792	1,792	-	653	653
Donation of Chromebooks	2,392	-	2,392	-	-	-
Insurance	1,038	-	1,038	1,008	-	1,008
Miscellaneous	193	-	193	186	-	186
Play equipment and materials	541	709	1,250	48	1,361	1,409
Publicity and advertising	173	163	336	246	30	276
Refreshments	234	686	920	81	213	294
Rent and premises hire	4,421	10,230	14,651	-	4,677	4,677
Safety equipment	53	383	436	-	-	-
Software and IT support	1,396	225	1,621	606	1,193	1,799
Staff expenses	463	1,413	1,876	477	-	477
Staff training	144	24	168	95	-	95
Stationery and office equipment	923	87	1,010	410	4	414
Telephone and postage	976	230	1,206	53	749	802
Volunteer expenses	1,138	242	1,380	490	35	525
Volunteer training	30	-	30	3	-	3
Wages	45,866	48,438	94,304	42,387	22,805	65,192
	61,521	67,801	129,322	48,134	32,513	80,647
(c) <u>Other</u>						
Accountancy charges	660	-	660	660	-	660
Depreciation	687	-	687	301	-	301
Independent Examiner's fee	360	-	360	336	-	336
Amortisation of capital funds	(310)	310	-	(140)	140	-
Loss on fixed assets	307	-	307	-	-	-
	1,704	310	2,014	1,157	140	1,297
Total expenditure	63,624	68,111	131,735	49,387	32,653	82,040

## HOME-START NEWARK

## NOTES

31 MARCH 2023

## 5. TAXATION

As a Registered Charity, the company is exempt from UK Corporation Tax.

## 6. TANGIBLE FIXED ASSETS

	<u>Equipment</u>
	£
<u>Cost</u>	
1 April 2022	3,697
Additions	4,306
Sales	(719)
	-----
31 March 2023	7,284
	-----
<u>Depreciation</u>	
1 April 2022	1,453
Charged	687
Released	(412)
	-----
31 March 2023	1,728
	-----
<u>Net book value</u>	
31 March 2023	5,556
	-----
31 March 2022	2,244
	-----

## 7. DEBTORS: AMOUNTS FALLING DUE WITHIN ONE YEAR

	2023	2022
	£	£
Trade debtors	137	2,500
Prepayments	908	816
Tax refund on Gift Aid donations	166	242
	-----	-----
	1,211	3,558
	-----	-----

## 8. CREDITORS: AMOUNTS FALLING DUE WITHIN ONE YEAR

Trade creditors	2,538	925
Social security and other taxes	897	648
Accruals and deferred income	28,023	32,987
	-----	-----
	31,458	34,560
	-----	-----

## HOME-START NEWARK

## NOTES

31 MARCH 2023

## 9. RESERVES

	2023	2022
	£	£
a) <u>Revaluation reserve</u>		
Balance 1 April 2022 and 31 March 2023	19,915	19,915
	-----	-----

The revaluation reserve is the value of assets less liabilities taken over from the old unincorporated charity.

## Outline summary of fund movements

	Fund balances Brought forward	Income	Expenditure	Transfers	Gains and Losses	Fund balance Carried forward
	£	£	£	£	£	£
Unrestricted funds	82,098	69,549	(63,624)	(3,219)	-	84,804
Restricted –						
Children in Need	-	10,500	(11,658)	1,158	-	-
Step up for School Service	-	19,126	(19,446)	320	-	-
HSUK Caring for Families Fund	585	-	(222)	-	-	363
HSUK Emergency Fund	495	-	(62)	-	-	433
National Lottery Covid Fund	626	-	(78)	-	-	548
HSUK Funding Strategy	2,547	-	(1,792)	-	-	755
NCC Covid Recovery Fund	202	18,682	(18,884)	-	-	-
Magic Little Grants	-	500	(383)	-	-	117
BNA Charitable Incorporated	-	1,000	-	-	-	1,000
Nottinghamshire County Council, Councillor's Divisional Fund, Councillor Keith Girling	-	1,000	-	-	-	1,000
NSDC Ollerton Pilot	-	14,370	(14,847)	1,741	-	1,264
HSUK – Chromebook	-	299	(30)	-	-	269
Coalfields Regeneration Trust	-	490	(490)	-	-	-
NCC Homes for Ukraine Fund	-	219	(219)	-	-	-
Revaluation reserve	19,915	-	-	-	-	19,915
	-----	-----	-----	-----	-----	-----
	106,468	135,735	(131,735)	-	-	110,468
	-----	-----	-----	-----	-----	-----

Unrestricted funds are those available for the general purposes of the charity. The restricted funds are grants from Children in Need, Domlal Foundation, Home-Start UK/DCMS Comms, National Lottery, Magic Little Grants, Coalfield Regeneration Trust, NSDC, NCC, BNA Charitable Incorporated and Nottinghamshire County Council, Councillor's Divisional Fund, Councillor Keith Girling, which may be spent only on the projects for which they were given.

## 10. TRUSTEES' EXPENSES, REMUNERATION AND BENEFITS

No trustee expenses have been incurred.

No trustees have been paid any remuneration or received any other benefit from an employment with Home-Start Newark.

**HOME-START NEWARK**

**YMCA NEWARK & SHERWOOD COMMUNITY ACTIVITY VILLAGE,  
LORD HAWKE WAY, NEWARK, NOTTINGHAMSHIRE.**

**ACCOUNTS**

**YEAR ENDED 31 MARCH 2023**

SECRETARY S.E. Grant	REGISTERED OFFICE -	YMCA Newark & Sherwood Community Activity Village, Lord Hawke Way, Newark, Nottinghamshire. NG24 4FH
COMPANY NUMBER 5433103		
CHARITY NUMBER 1109551		

**INDEX**

	<u>Page</u>
Trustees'/Directors' report	1 - 2
Independent Examiner's report	3
Profit and loss account	4
Statement of Financial Activities	5
Balance sheet	6
Notes	7 - 11

**David Pattinson, Chartered Accountants,  
233, London Road, Balderton, Newark, Nottinghamshire.**

## HOME-START NEWARK

### TRUSTEES' ANNUAL REPORT

The trustees present their report and the accounts of the company for the year ended 31 March 2023.

#### OBJECTIVES AND ACTIVITIES

The objects of the company are to increase the confidence and independence of the family by:

- a) offering support, friendship and practical assistance;
- b) visiting families in their own homes, where the dignity and identity of each adult and child can be respected and protected;
- c) reassuring parents that difficulties in bringing up children are not unusual and encouraging them to enjoy family life;
- d) developing a relationship with the family in which time can be shared and understanding can be developed: the approach is flexible to take account of different needs;
- e) encouraging parents' strengths and emotional well-being for the ultimate benefit of their children;
- f) encouraging families to widen their network of relationships and to use effectively the support and services available within the community.

#### Our aims and objectives

In order to achieve our vision and strengthen our organisation Home-Start Newark will pursue the following aims and objectives:

**Our delivery:** Continue to provide tailored support to families in a professional and efficient manner

- Ensure systems, policies and processes are maintained to provide effective operations
- Ensure effective governance and financial control is maintained
- Ensure the safeguarding of children remains at the core of all areas of work

**Our Services:** Ensure our services are as appropriate, effective and responsive as they can be within the changing social, political and pandemic situation.

- Keep our services under frequent review to ensure we are able to respond rapidly to developments relating to the global pandemic changing need and identify ways they may be refined or adapted to meet
- Continue to engage with families in a range of ways to obtain feedback regarding our services to ensure we remain responsive to changing needs.

**Our People:** Ensure we continue to have motivated and engaged volunteers and staff in place to enable delivery of our services

- Maintain a watchful eye on volunteer numbers ensuring recruitment occurs at appropriate levels to maintain sufficient numbers to deliver our home visiting service and group support facility and consider new approaches to volunteer recruitment
- Ensure that Home-Start Newark continues to be an organisation of choice for people to work and volunteer for by offering relevant ongoing training, support and development opportunities
- Ensure our equalities and diversity policy is central to all staff and volunteer recruitment, development and support plans.

**Our Finances:** Ensure that our organisation is financially secure now and in the future

- Develop and maintain a clear strategy for strengthening our financial position including accessing grants, fundraising activities and one-off funding bids in line with our ethical fundraising policy
- Continue to closely observe accounts, actively working to anticipate possible future variables in income and expenditure

**Our relationships:** Ensure we maximise our opportunities to develop strategic partnerships that will advance our vision

- Consider how relationships with key stakeholders could be developed by exploring local collaborative working or reciprocal support and signposting
- Work to improve our relationship with local businesses, networking at local events and actively engaging with them where appropriate.

**Our Profile:** Ensure we maintain a strong local and regional reputation

- Ensure our marketing and communication materials are fully updated in line with Home-Start UK expectations to ensure continued visibility and providing effective materials for publicity purposes and funding bids

- Take steps to raise our profile with local businesses
- Develop our social media presence, targeting relevant material towards differing audiences

## ACHIEVEMENTS AND PERFORMANCE

I feel this has been a positive year for our scheme despite challenges faced by the whole team. Fortunately, there has been stability in staff and Trustees which I believe has helped us face these challenges and as we have welcomed new appointments in both areas I feel that we are well set up to face what the future may hold.

At the centre of our work are the families that we support who may be facing difficult and varied problems. These families come from all levels of society including those recently settled in our community and our Volunteers with ongoing support from Family Support Co-ordinators continue to make a massive change to their lives. We are obviously not able to share those successes with you but at monthly Board Meetings Trustees receive updates on problem faced and the progress made with the weekly support of Volunteers and we are humbled at what is achieved.

Family Group has gone from strength to strength and remains an important part of the lives of families that attend. By developing fun play and activities which encourage socialising, the team make a major contribution to our Step Up For School programme that works so well for other families in our home visiting programme.

Our Volunteers are brilliant and we thank them for their continuing support. A major challenge that we face is attracting people prepared to give up their time to support others. We are not alone in this as it seems that there are 1.5 million fewer volunteers in the charity sector than before the pandemic but we feel that we can provide great training, support and a sense of personal achievement for those working with us. If you are reading this and feel that it may be something that you or someone you know would find satisfying, I would encourage contacting us to find out more.

You may not be surprised that the other major challenge that we face is funding our scheme. Many of our traditional funders are facing huge demands on their resources but we have been aware of this for some time and have been successful with new opportunities. We are very fortunate to receive funding and donations from businesses and private individuals and we really appreciate this support. We will of course continue to explore for more funding streams which can support our work

Despite the challenges that we face we are optimistic about the future. Thank you for reading this and your support for our scheme.

## FINANCIAL REVIEW

There was a net surplus of £4,000 for the year ended 31 March 2023. Total funds carried forward are £90,553 plus the revaluation reserve of £19,915.

It is the policy of Home-Start Newark to build and retain a reserve that would:

- Ensure the organisation could meet all outstanding liabilities should core funding be withdrawn at short notice.
- Ensure the organisation could continue operating for three months should core funding be significantly reduced. A significant reduction has been taken to mean a 50% cut. During the year in question all efforts would be made to obtain alternative funding to continue the service in the future.

## STRUCTURE, GOVERNANCE AND MANAGEMENT

Home-Start Newark is a company limited by Guarantee, the governing document being the Memorandum and Articles of Association.

Trustees are recruited from the local area and are people of good standing within the community, with the appropriate skills to support the scheme.

## REFERENCE AND ADMINISTRATIVE DETAILS

The directors in office in the period and up to the date of this report, who are also trustees, were as follows:

- J. Geraghty, H. Lockwood, T O'Dea, C. Willey and K.J. Southern served throughout the year.
- J. Forrester resigned during the year.
- G. Bukel and I.M. Barber were appointed after the year-end.

This report has been prepared in accordance with the special provisions relating to companies subject to the small companies regime within part 15 of the Companies Act 2006, and the Charities Statement of Recommended Practice (FRS102)(effective January 2015).

By order of the Board on 8 June 2023

Secretary

S. GRANT



## INDEPENDENT EXAMINER'S REPORT TO THE TRUSTEES OF HOME-START NEWARK

I report on the accounts of Home-Start Newark, for the year ended 31 March 2023 which are set out on page 4 to 11.

### Respective responsibilities of trustees and examiner

As the Charity's trustees you are responsible for the preparation of the accounts; you consider that the audit requirement of section 144 of the Charities Act 2011 (the Charities Act) does not apply, and that an independent examination is needed.

It is my responsibility to:

- examine the accounts under Section 145 of the Charities Act,
- to follow the procedures laid down in the general Directions given by the Charity Commission (under section 145(5)(b) of the Charities Act), and
- to state whether particular matters have come to my attention.

### Basis of independent examiner's statement

My examination was carried out in accordance with the General Directions given by the Charity Commissioners. An examination includes a review of the accounting records kept by the Charity and a comparison of the accounts presented with those records. It also includes consideration of any unusual items or disclosures in the accounts, and seeking explanations from the trustees concerning any such matters. The procedures undertaken do not provide all the evidence that would be required in an audit, and consequently no opinion is given as to whether the accounts present a 'true and fair' view and the report is limited to those matters set out in the statement below.

### Independent examiner's statement

In connection with my examination, no matter has come to my attention:

(1) which gives me reasonable cause to believe that in any material respect the requirements:

- to keep accounting records in accordance with section 130 of the Charities Act; and
- to prepare accounts which accord with the accounting records and comply with the accounting requirements of the Charities Act.

have not been met; or

(2) to which, in my opinion, attention should be drawn in order to enable a proper understanding of the accounts to be reached.

David Pattinson, Chartered Accountant  
233, London Road,  
Balderton,  
Newark,  
Nottinghamshire.  
NG24 3HA



15 June 2023