



Registered Charity
No: 1107551


LIGHTHOUSE EDUCATIONAL SOCIETY

Annual Report 2022

Volunteering for the future

 info@lhedu.org.uk

 52 Tamworth Road Croydon CR0 1XW

 www.lhedu.org.uk

Contents

03	About Us
04	Portfolio
05	The Team
06	Secretary's Report
07-08	Services and Projects
09	Feedbacks
10	Treasurer's Report
11	Financial Statement 2022

About Us

Lighthouse Educational Society is a South London-based charity working to enable and empower young people through education. It aims to raise confidence and ability to take initiative amongst today's youth by delivering mentoring, tuition services. With help of qualified mentors, we help youngsters and adults by taking place seminars, trainings, organising different social activities.

Main objective is to help them by mentally and physically.

Lighthouse Educational Society is a people-centric organisation aiming to give responsibility to all those who are willing to volunteer. We encourage involvement from all ages. Volunteering helps to create network in community and integration within the community



info@lhedu.org.uk



Portfolio

We are a charity run by trustees and a management executive board. Charity is supported by local businesses, members and funders. We have members who pledge and donate substantial amounts every year from January to December. Members spread across the South London. Therefore we operate mainly in Croydon, Sutton, Kingston, Bexley and Medway in Kent.



Community Centres

We operate our services in the community centres. These centres consist of 3-5 classrooms, offices, a seminar room, a functional room and a kitchen. It vital point of meeting for us to function our services financially as well as effectively

What else we run?

- Educational Centres
- Play date Centres
- Fundraising Fairs
- Social Gatherings



The Team

The Board of Trustees

Our board of trustees possesses a wealth of experience in managing charitable, educational, and accounting businesses. They convene regularly throughout the year and coordinate the Annual General Meeting (AGM) every October.

Management Board

Our management board oversees the day-to-day operations, including bookkeeping, as well as the planning and design of educational activities throughout the year. Conducting weekly meetings enables us to deliver better services across all our projects, from parenting schools to homework assistance, social activities, and youth organization.

Advisory Board

The board has made the decision to establish an advisory panel comprising professionals from various fields who will contribute their expertise and guidance to enhance our strategic plans and projects on a voluntary basis.

Personnel and Volunteers

The Lighthouse Educational Society has hardworking, dedicated staff members and volunteers who support our projects to be successful in every field of education and support services. We are grateful for each and every one of them being a part of LES, and we value their work immensely.

Secretary's Report

Lighthouse Educational Society has met its governance requirements as a charity organisation to a good standard and this year is also same. We had the systems and processes in place to meet our duties and a good set of trustees and staff to meet our charitable objectives. We are continuously risk assessing the financial position and monitoring our project delivery. The proof of this is the sheer amount of praise our charity receives about our work and impact it has on people's lives.



Projects

- Community Projects
- Educational Projects
- Seminars
- Parenting Schools
- Supplementary Schools
- Educational Consultancy
- Mentoring projects



Fundraising

- Members donation
- Funding/Grants
- Fundraising events, fairs
- Donation boxes
- Educational Services
- Supplementary school
- Hall hire, office hire



Service

Annual planned services provided based on the budget made in the beginning of every year. These are mentioned under the projects. We work with professional experienced personnel who provides best possible service to the community



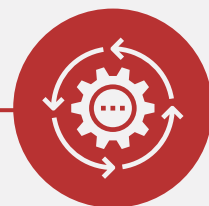
Monitoring

We have dedicated staff collecting project feedback forms and reports from project coordinators in order to make sure the services provided are effective.



Outcome

In our Annual General Meeting evaluation reports are provided and stakeholders and funders donors are informed with the outcome of the services.

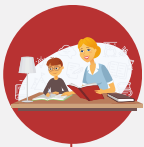


Community

Our community is in the heart of the organisation. Decision making process is smoothly carried with all members and trustees. Community satisfaction is crucial part of what we do in our community centres.

Services and Projects

Lighthouse provides following projects to communities



Supplementary Schools

We run community and supplementary schools in each branches. Qualified and experienced teachers and staff provides English, Maths and Science and Language courses for primary and secondary age children. Small classroom sizes provides best environment for children who learn to develop their literacy and numeracy skills. Across the 5 branches we have total 185 children using this services



Mentoring

Young children needs environment for engaging and socializing among youth. We have dedicated mentors and mentees who oversees mentorign projects from Homework Help, project development, universtity preparation, exam prepapration and social aspect of young people. Sport activities, camping, and scouts are organised across the year.



Community Engagement

Community is in the center of everything we do in these community centres. Families and children gather for birthday celebrations, religious get togethers, and friendly coffe mornings, community dinners are held.

We create partnerships with local charities and organisation in order to develop working in partnership and gain experience and share ideas from each other.



Parenting Schools

Seminars and talks, consultancy sessions provided through out year. Virtually and face to face parenting schools held. From how to care well being of children, healthy generation and etc.

Services and Projects

Our services user's statistics are below

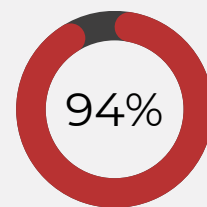
Services users

In 2021

- We had 150 children from 5-16 years olds
- 118 members actively supporting the charity
- 50+ events and activities in annually
- 20 volunteers supporting people in need

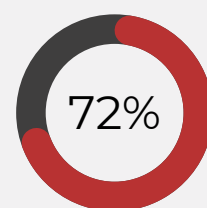
In 2022

- We have 185 children from 5-16 years olds
- 142 members actively supporting the charity
- 60+ events and activities in annually
- 24 volunteers supporting people in need



Supporters

Continue their support every other year



Disadvantages Community

Services provided to most needy members of community

Our Branches

Croydon Branch (Head Office)

52 Tamworth Road, Croydon CR0 1XW



Bexley Branch

1 Hook Lane, Welling, DA16 2DH



Medway Branch

20 Manor Road, Chatham Kent ME4 6AG





Over the past year, our organisation has provided vital educational support to students, offering English and Maths supplementary classes and successfully launching a Homework Club, an initiative suggested by parents that pairs primary and secondary age children with mentors for homework assistance.



DEADLINE
31 JULY



FREE
**SUMMER
BOOSTER**
Course
KS1-KS4



REGISTRATION
IS OPEN
NOW

SUBJECTS

→ **MATHEMATICS**

→ **ENGLISH**

4 WEEKS
PROGRAM
IN AUGUST

52
TAMWORTH RD
CROYDON
CRO 1XW

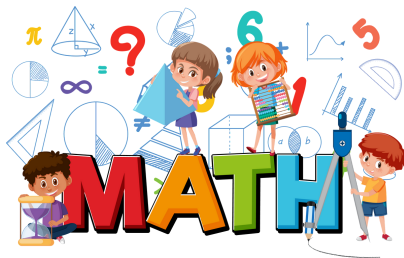
Register: info@lhedu.org.uk
07522652693



STARTS ON 5 OCTOBER

KS3-KS4

ENGLISH



52 TAMWORTH ROAD/
CROYDON /CROIXW

07391261657



The program, centered on homework help, academic skills, and motivational activities, yields numerous benefits for both our youth mentors, who gain confidence and valuable experience while reducing depressive symptoms, and our mentees, who receive care, support, positive role models, and enhanced social integration to help them achieve their goals.



Our annual report underscores the remarkable impact of our youth mentorship program, which focuses on training youth mentors to support and nurture their young mentees. This program offers benefits to both mentors and mentees, with mentors gaining confidence and experience while reducing depressive symptoms, and mentees receiving care, support, positive role models, and enhanced social integration to help them achieve their goals.



free meals every day!



Throughout the half term, our initiative provided 50 free lunch packages daily, with no eligibility checks or terms and conditions, welcoming everyone to access "kids lunch" packages. We also offered home delivery for those unable to attend, reinforcing our commitment to combating child food poverty in Croydon.

#endchildfoodpoverty

In our annual report, we are pleased to highlight our ongoing commitment to providing free English (ESOL) classes for adults on a weekly basis.

These classes offer valuable opportunities for language development and integration within our diverse community, contributing to increased language proficiency and improved communication skills for our adult learners.





JULY 2022 | 30TH JULY

WALK & FUN

ALL CHILDREN AGED BETWEEN 12-18 WELCOME



REGISTER

projects@lhedu.org.uk
07745525790

WANDLE PARK

Walk to level up and improve your physical activity skills and make new friends



In 2022, we have been awarded Sport England project which is dedicated to the Queen's Platinum Jubilee 2022 to support youth with basketball, walk and fun activities. This project was successful and highlight of why our youth is vital in building our community.

The Big Give Christmas Challenge
November 2022

Levelling up COMMUNITY PROJECT
Education, Training, Practice

Free Register

info@lhedu.org.uk
Tel: 02086801168

ENGLISH COURSE

Free for Women

An interactive English Language Course for qualifying women from Croydon

Thursdays 10.00-13.00
Fridays 10.00-13.00

ENROL NOW
Mobile: 07745525790
Email: info@lhedu.org.uk

Christmas Challenge 2022

Levelling up community project

Educating, training and qualifying disadvantaged and vulnerable community members that will appeal to the work environment and the improvement of life and society at large. We will provide literacy and numeracy sessions, health and wellbeing, digital skills, job club (CV help and job matching)

Since the pandemic disadvantaged communities have struggled with supporting their children academically which causes children to be socially aware and highly confident. Our programme will help to rebuild connections within the community. It will help to improve skills and training to enable individuals to seek employment. With the elderly community social gatherings help to connect again and improve their mental wellbeing. ESOL Language sessions will help refugees to gain basic language skills.

The Lighthouse Educational Society convenes its Annual General Meeting, bringing together representatives from all of its branches, to discuss the progress and achievements of the past year. This collaborative event serves as a platform for sharing insights, evaluating performance, and setting collective goals for the future.



Feedbacks from parents

Selcuk B

I have recently moved near Community Centre in Bexley. My son enjoys attending to session and we are grateful of the services.

Zehra B

I have 4 children whom take services from the community centre. We have great group of families to bond and engage among each other and develop community spirit. Appreciate it.

Mr Khan

I used Lighthouse for the preparation to my children's exams. They have excelled in both Literacy and Numeracy levels at their schools.

Mrs Akitoye

I have been using supplementary school services for the past 6 years now. I had 3 children at different age group and they all have graduated now and enjoyed the support they got. Thank you

A Parent

It is a community feeling here we have in the centre in Croydon. We as a from refugee background, it would be so hard to settle here in the UK without support we have given. Thank you for the team, specially Mustafa who helped me.

Student

I have a lot of fun when I come to the community centre because we play table tennis and enjoy with my friends.

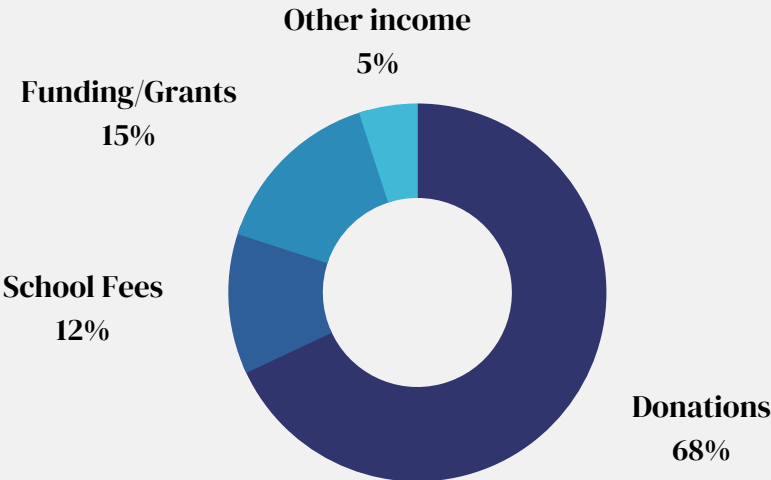
Treasurer's Report

Lighthouse raises its funds from pledge donation, fundings and fundraising activities

Last 4 years income chart



Annual typical income ratio



We have a very sustainable method of running the charity. Regular donors pledge every year and meet their targeted donation.

We have regular funders from nationally recognized bodies where we do various projects in the communities

We extend our centres to be productive, hiring as a function or office or other third sector organisation to generate further income.

Registered Charity Number
1107551

Lighthouse Educational Society

Report and Accounts

31 December 2022

Ekrem & Co
Accountants LLP

505 Lordship Lane, Dulwich, London, SE22 8JY

Telephone: 020 8693 4100

email: accountants@ekrem.co.uk

Partners: Mr H Ekrem, FFA FIPA, FAIA, FFTA; Mrs M Ekrem

Lighthouse Educational Society
Report and accounts
Contents

	Page
Trustee's report	2
Independent Examiner's Report to the members	4
Statement of financial activities	5
Balance sheet	6
Notes to the financial statements	7

**Lighthouse Educational Society
Company Information**

Trustees



Hidden with the permission from Charity Commission

Independent Examiner

Ekrem & Co Accountants LLP
Public and Financial Accountants
505 Lordship Lane
London
SE22 8JY

Registered office

52 Tamworth Road
Croydon
CR0 1XW

Lighthouse Educational Society Trustee (Chair)'s Report

The trustee (Chair) presents his report and accounts for the year ended 31 December 2022.

Principal activities

The organisation's principal activity during the year continued to be charity, Education

Reference and Administrative Details

Registered Charity Name	Lighthouse Educational Society
Registered Charity Number	1107551
Registered Office	52 Tamworth Road Croydon CR0 1XW

The Trustees

The following persons served as trustees during the year:



Hidden with the permission from Charity Commission

Responsibilities of the Trustees

The Trustees are responsible for preparing the Trustee Annual Report and the financial statements in accordance with applicable law and regulations.

Charity law requires the trustees to prepare financial statements for each financial year. Under that law the trustees have elected to prepare the financial statements in accordance with United Kingdom Generally Accepted Accounting Practice. Under that law the trustees must not approve the financial statements unless they are satisfied that they give a true and fair view of the state of affairs of the charitable organisation and the income and expenditure of the charity for that period.

In preparation these financial statements, the trustees are required to:

- * Select suitable accounting policies and then apply them consistently;
- * Observe the methods and principles in the Charities SORP;
- * Make judgements and accounting estimates that are reasonable and prudent;
- * State whether applicable UK Accounting Standards have been followed, subject to any material departures disclosed and explained in the financial statements;
- * Prepare the financial statements on the going concern basis unless it is inappropriate to presume that the charitable organisation will continue in operation.

The trustees are responsible for keeping adequate accounting records that are sufficient to show and explain the charity's transactions and disclose with reasonable accuracy at any time the financial position of the charity and enable them to ensure that the financial statements comply with the Charities Act 2006. They are also responsible for safeguarding the assets of the

Lighthouse Educational Society - Trustees' Report (2022)

Registered Charity: 1107551

Address: 52 Tamworth Road, Croydon CR0 1XW

Introduction:

Lighthouse Educational Society, a registered charity (Charity No. 1107551), is pleased to present its Trustees' Report for the year 2022, outlining the activities and achievements of the organization over the past year.

Charity's Activities:

Lighthouse Educational Society is committed to supporting the educational and social development of children, parents, and the community as a whole. Our activities include:

- **Supplementary Education for Children:** We offer supplementary education services for children in primary and secondary schools. This includes online mentoring sessions for KS1-KS2 children, literacy and numeracy support, and engaging online activity sessions. In 2022, we served a total of 74 children in the age range of 5-15 years old. An impressive 82% of the children we supported were from English as an Additional Language (EAL) backgrounds.

- **Frequency of Sessions:** Children attended our sessions once a week, and parents received reports every other week. We maintained smaller group sizes (6-8 per group) to ensure efficiency and provided individual support through termly 1-2-1 sessions.

- **Pandemic Impact:** During the pandemic, we witnessed the disproportionate impact on disadvantaged children from Black, Asian, and Minority Ethnic (BAME) backgrounds. Lighthouse Educational Society played a crucial role in bridging the educational gap during this challenging time.

- **Outdoor Activities:** We organized outdoor activities during the Easter Break and Queen Platinum Jubilee holidays, creating opportunities for children to thrive, learn, and enjoy the holiday season.

- **Motivation and Support:** To keep children motivated, we developed a methodology that awarded milestone stars and gifts. We recognized the importance of physical sessions in improving motivation among children. We also addressed the challenges faced by families who couldn't support their children at home by providing teaching assistants and volunteer TAs.

- **Positive Outcomes:** We are proud of the outcomes achieved, as parents expressed their gratitude for the significant improvements in their children's literacy and numeracy skills. Our mission to provide equal and fair education during the period of home schooling, particularly for socially disadvantaged children, has yielded positive results.

Impacts Achieved:

Our impacts for the year 2022 have been significant:

1. **Academic Success:** Disadvantaged children have made great strides in their comprehension and math subjects.
2. **Confidence Building:** Children have enhanced their confidence through improved grades.
3. **Social Integration:** The project has improved social integration among socially disadvantaged children.
4. **Parental Involvement:** Parents have gained valuable skills and shared their knowledge with the wider society.
5. **Inspiring Dreams:** Our efforts have helped children dream and aspire to achieve better things in life.

Measurement and Reporting:

We measure the success of our project based on the progress of the children admitted. Termly assessments are collected and reported to parents, along with their school reports. Online digital tools are used to monitor children's work at home, which is shared with teachers, parents, and the project.

Acknowledgements:

We would like to extend our heartfelt thanks to all the dedicated teachers, volunteers, and parents who have made our mission a success. Their hard work and commitment have contributed to the positive outcomes we have achieved.

Conclusion:

Lighthouse Educational Society remains committed to its mission of providing educational support to disadvantaged children and their parents. The year 2022 was a year of challenges, but it was also a year of significant achievements. We will continue to strive for excellence in our services, ensuring that every child has an opportunity for a brighter future.

Lighthouse Educational Society

Trustee (Chair)'s Report

charitable organisation and hence for taking reasonable steps for the prevention and detection of fraud and other irregularities.

In so far as the trustees are aware:

- * There is no relevant information of which the charity's independent examiners is unaware; and
- * the trustees have taken all steps that they ought to have taken to make themselves aware of any relevant information and to establish that the independent examiner is aware of that information.

INDEPENDENT EXAMINER

are deemed to be re-appointed under Charities Act 2011.

Registered office:

52 Tamworth Road
Croydon
CR0 1XW

Signed by order of the trustees



Trustee

Hidden with the permission from Charity Commission

Independent examiner's report on the accounts

Report to the
trustees/ members Lighthouse Educational Society
of

On accounts for
the year ended

31 December 2022

Charity no
(if any)

1107551

I report to the trustees on my examination of the accounts of the above charity ("the Trust") for the year ended 31/12/2022.

As the charity's trustees, you are responsible for the preparation of the accounts in accordance with the requirements of the Charities Act 2011 ("the Act").

Responsibilities
and basis of
report

I report in respect of my examination of the Trust's accounts carried out under section 145 of the 2011 Act and in carrying out my examination, I have followed all the applicable Directions given by the Charity Commission under section 145(5)(b) of the Act.

I have completed my examination. I confirm that no material matters have come to my attention in connection with the examination (other than that disclosed below *) which gives me cause to believe that in, any material respect:

- the accounting records were not kept in accordance with section 130 of the Charities Act; or

Independent
examiner's
statement

- the accounts did not accord with the accounting records; or
- the accounts did not comply with the applicable requirements concerning the form and content of accounts set out in the Charities (Accounts and Reports) Regulations 2008 other than any requirement that the accounts give a 'true and fair' view which is not a matter considered as part of an independent examination.

I have no concerns and have come across no other matters in connection with the examination to which attention should be drawn in this report in order to enable a proper understanding of the accounts to be reached.

Signed:

H. Ekrem

Date:

24 October 2023

Name:

Halit Ekrem

Relevant
professional
qualification(s) or
body (if any):

FFA FIPA, FAIA, FTA

Address:

Ekrem & Co Accountants LLP
505 Lordship Lane
London, SE22 8JY

Lighthouse Educational Society
Schedule to the Statement of Financial Activities
for the year ended 31 December 2022

	Unrestricted Funds	Restricted Funds	2022 £	2021 £
Grants and Donation				
Donation	500		500	17,020
Grants		353,821	353,821	310,916
Rent Receivable	-		-	-
Total Incoming Resources	500	353,821	354,321	327,936
Direct Charitable Expenditure:				
Tutorial Expenses	-	77,548	77,548	52,271
		77,548	77,548	52,271
Employee costs:				
Wages and salaries		150,558	150,558	152,548
Volunteer Expenses	24,024		24,024	21,792
Travel and subsistence	1,609		1,609	-
	25,633	150,558	176,191	174,340
Premises costs:				
Rent	16,500		16,500	17,938
Rates	5,944		5,944	3,703
Light and heat	12,118		12,118	8,164
Cleaning	1,708		1,708	451
	36,270	-	36,270	30,256
General administrative expenses:				
Telephone and fax	1,988		1,988	1,553
Stationery and printing	6,571		6,571	4,386
Subscriptions	671		671	1,299
Bank charges and interest	187		187	66
Insurance	4,677		4,677	4,244
Equipment hire	345		345	383
Repairs and maintenance	6,452		6,452	5,733
Depreciation	22,338		22,338	22,340
Sundry expenses	752		752	1,674
	43,981	-	43,981	41,678
Legal and professional costs:				
Accountancy fees	600		600	600
Other legal and professional	6,046		6,046	7,340
	6,646	-	6,646	7,940
Total Expenditure	112,530	247,875	360,405	321,270
Total Resources expended	112,530	247,875	360,405	321,270
Net incoming/(outgoing) resources before transfer	(112,030)	105,946	(6,084)	6,666
Transfers in respect of fixed assets additions				
Net movements in funds for the year	(112,030)	105,946	(6,084)	6,666
Total funds as at 1 January 2022			459,490	452,824
Total funds as at 31 December 2022 c/fwd	(112,030)	105,946	453,406	459,490

**Lighthouse Educational Society
Balance Sheet
as at 31 December 2022**

	Notes	2022 £	2021 £
Fixed assets			
Tangible assets	4	876,457	854,119
Current assets			
Debtors	5	22,041	22,041
Cash at bank and in hand		(2,291)	46,130
		<u>19,750</u>	<u>68,171</u>
Creditors: amounts falling due within one year	6	(870)	(758)
Net current assets		<u>18,880</u>	<u>67,413</u>
Total assets less current liabilities		<u>895,337</u>	<u>921,532</u>
Creditors: amounts falling due after more than one year	7	(441,931)	(462,042)
Net assets		<u>453,406</u>	<u>459,490</u>
Capital and reserves			
Total Funds Account	8	453,406	459,490
Charity's Total Fund		<u>453,406</u>	<u>459,490</u>

Hidden with the permission from Charity Commission



Trustee
Approved by the board of trustees on 24 October 2023

Lighthouse Educational Society
Notes to the Accounts
for the year ended 31 December 2022

1 Accounting policies

Basis of preparation

The accounts have been prepared under the historical cost convention and in accordance with the Financial Reporting Standard for Smaller Entities (effective April 2008).

Depreciation

Depreciation has been provided at the following rates in order to write off the assets over their estimated useful lives.

Plant and machinery 15% straight line

2 Operating profit		2022	2021
		£	£
This is stated after charging:			
Depreciation of owned fixed assets		-	22,340
		-----	-----
3 Interest payable		2022	2021
		£	£
Interest payable		19,769	14,785
		-----	-----
4 Tangible fixed assets			
	Land and buildings	Plant and machinery etc	Total
	£	£	£
Cost			
At 1 January 2022	1,055,099	86,843	1,141,942
Additions	21,102	1,236	22,338
At 31 December 2022	1,076,201	88,079	1,164,280
	-----	-----	-----
Depreciation			
At 1 January 2022	205,141	82,682	287,823
At 31 December 2022	205,141	82,682	287,823
	-----	-----	-----
Net book value			
At 31 December 2022	871,060	5,397	876,457
	-----	-----	-----
At 31 December 2021	849,958	4,161	854,119
	-----	-----	-----
5 Debtors		2022	2021
		£	£

Lighthouse Educational Society
Notes to the Accounts
for the year ended 31 December 2022

Trade debtors	22,041	22,041
	<hr/>	<hr/>
6 Creditors: amounts falling due within one year	2022	2021
	£	£
Trade creditors	600	603
Other taxes and social security costs	270	155
	<hr/>	<hr/>
	870	758
	<hr/>	<hr/>
7 Creditors: amounts falling due after one year	2022	2021
	£	£
Bank loans	441,931	462,042
	<hr/>	<hr/>
8 Total Funds Account	2022	2021
	£	£
At 1 January 2022	459,490	452,824
(Deficit)/surplus for the year	(6,084)	6,666
	<hr/>	<hr/>
At 31 December 2022	453,406	459,490
	<hr/>	<hr/>