



# Trustee Report and Financial Statements



2020 – 2021

 [info@adab.org.uk](mailto:info@adab.org.uk)

 0161 764 6749

 [www.adab.org.uk](http://www.adab.org.uk)

## CONTENTS

1. About ADAB .....	2
2. Chairs Foreword .....	3
3. Chief Officers Overview.....	4
4. Achievements.....	5
a. Children & Young People .....	5
b. Education & Training.....	5
c. Community Services.....	5
d. Information Advice & guidance.....	7
e. Social Clubs .....	7
f. Sports & Leisure.....	8
g. Health & Social Care .....	9
h. Mosses Centre .....	10
i. Music & Arts .....	10
j. BAME Infrastructure Services.....	11
5. Future Work .....	12
6. Case Studies .....	13
7. Statement of Financial Affairs .....	14
a. Legal and Administrative Information .....	14
b. Independent Examiner's Report .....	15
c. Statement of Activities.....	16
d. Balance Sheet .....	17
e. Notes to the accounts forming part of the financial statements .....	18
f. Trustees' Statement .....	22

## Our Vision

“Our vision is to transform minority communities by inspiring them and building their confidence to become thriving active citizens, with skills to be the leaders as valued citizens of Bury”



## Our Mission

“Our mission is to inspire, educate, strengthen and empower minority communities to achieve individual, social, and economic Success”



## ABOUT ADAB

ADAB is a vibrant multi-dimensional community support and development organisation, providing a wide range of life-changing services and opportunities to the local community of Bury. We assist people of all ages and from all communities to enhance and develop their quality of life by tackling social isolation; economic disadvantage through education/training; Social Care through community services; sports & leisure; Children & Young People services as well as Music & Arts.



ADAB manages the Mosses Centre providing a resource for the local community in the Bury East Ward. ADAB has been serving the community since 1997 and will be celebrating our 25<sup>th</sup> anniversary in July this year. Despite the COVID restrictions and the difficulty on obtaining ongoing grants, we continue to provide support for those in disadvantaged.

ADAB prides itself in the fact that our strength lies in our diversity, helping to meet the needs of local people and supporting their aspirations. We also aim to promote understanding between all sections of the local community, offering a setting for multicultural, interfaith and intergenerational exchange.

ADAB provides Community services and Development support to tackle discrimination and inequalities in Bury. We support minority communities (Black Asian and Minority Ethnic - BAME) with services to develop their resilience and to enhance their quality of life. To achieve this ADAB provides a wide range support, services and social initiatives including:

- **Children & Young People** – Pre-school Nursery; Youth activities & clubs
- **Education & Training** – ESOL; adult education, numeracy & literacy, Hate Crime employment skills, training and job support Equalities;; employability skills
- **Community Services** - Inclusion & Diversity; Asylum Seekers/Refugees; equality, diversity and community cohesion
- **Information, Advice & guidance** - Support, guidance and advocacy for disadvantaged communities
- **Social Clubs** – Forces Veterans Club; Red Rose Over 60's; Jazz Club; Cine club; Lunch club
- **Sports & Leisure** – Women's Keep Fit; Yoga; Boxing;
- **Health and wellbeing** – domestic violence; inequalities; isolation; loneliness; mental health; long term health conditions, independent living skills.
- **Mosses Centre** – Community centre; room hire; community hall; shared facilities
- **Music & Arts** - South Asian Instruments; Singing; Live Music; Dancing
- **BAME organisations Infrastructure Support** – Capacity Building; representation

## Chairs Foreword

It is with great pride that we present this trustees report highlighting ADAB's services, an organisation dedicated to the betterment of the local community particularly the minorities as well as new and emerging communities. ADAB's mission remains to support the development of the Black Asian and Ethnic Minority (BAME) in Bury and utilising all available opportunities to best achieve this.

In 2019 ADAB stepped in to support Bury Council and saved the bankrupt Mosses Centre from closure. Since we have invested heavily and systematically brought the community centre back into community use carrying out essential health & safety and general repairs. I am proud of the fact that all community groups that would have ceased work, had the Mosses Centre closed, are now thriving with the support of ADAB.

As the only BAME support organisation in Bury, ADAB plays a critical role in supporting the development of both the BAME community and BAME voluntary & community organisations. ADAB recognises the of changing dynamics and trends in our sector as such we are evolving by developing income generation to supplement our grant income.

ADAB is an integral part of the Bury community and we want to ensure quality in all aspects of our work, we take pride in that fact that the local community has recognised the value and impact of ADAB. To ensure that we are on target to achieve our ambitions, the Board of Trustees again this year are reviewing work strategic approach and will be launching a news revised business plan shortly. We have recommitted to being a community service which will develop and support minority and needy communities. We will develop joint projects with like-minded partners to ensure enhanced community support.

We have always been innovative and looked at developing solutions to emerging issues. I am confident that we can continue to deliver our passion for the community and maintain ADAB's position as a key provider of services to the local community.

I would like to take this opportunity to thank all our funders, Bury Council and the local community without whose support ADAB could possible not carry out its invaluable work.

Last but by no means least I really want to thank my fellow trustees, volunteers and the staff at ADAB for their commitment hard work and dedication above and beyond the call of duty. I look forward to working with you all as ADAB continues its invaluable work into the future.

Dr. Lal Khan  
Chair



## Chief Officers Overview



It is an honour and a privileged to lead an organisation like ADAB which has its roots in the local community. Since its inception in 1997 ADAB has evolved into a vibrant charity providing services, support and resources to needy communities of Bury. Our fundamental mission to serve the community remains the same all these years later, as you will see from the details in this report.

Over 1000 people use one or more our services each week, for whom we provide life-changing services and opportunities. ADAB is a wonderful example of what can be

achieved when people from diverse backgrounds come together to change society for the better.

ADAB truly has a lot to celebrate, with 15 different projects and services operating under our guidance and support. These include under 5s pre-school nursery; highly popular Armed Forces Veterans Club; wonderful Girls Boxing Clubs, Women's Keep fit; Mental Health Support; ESOL classes; there is something for virtually everybody! On behalf of staff and trustees I would like to extend a warm invitation to everyone to visit us and see our work.

Despite our glorious past we need to plan for the future, as such we are developing our business model to be more resilient for the future. We are confident that this will ensure that ADAB continues to thrive, meeting needs and helping create new opportunities for our communities.

This year will see in ADAB the 25<sup>th</sup> Anniversary we will have a series of exciting local community events starting from July 2022 to recognise the work of our fantastic projects and numerous volunteers.

The assistance and commitment of all our funders, individual donors and pro bono partners makes a real difference to what we are able to achieve. It is also much needed. To ensure that our vital work continues for years to come we have started the refurbishment of the Mosses centre and over the year we will be making improvements to all aspects of our operations adding in new equipment and projects.

On behalf of the Staff, trustees and volunteers I want to express by sincere gratitude and thanks to all our funder for their incredible support as without that we won't be able to provide such wonderful support and services.

We are truly incredibly grateful to all who are able to lend their support to St Hilda's East Community Centre. Thank you.

Tan Ahmed  
Chief Executive



## Our Work & Achievements

### 1. Children & Young People

Mosses Nursery is OFSTED approved providing preschool play, learning and childcare to children aged 2 to 5 years. Our high quality provision offers local children the best possible start in life through the opportunity to explore and learn, both indoors and outdoors. providing valuable early learning fun activities for pre-school children.

Approximately 30 children attend each half day session on a daily basis.



### 2. Education & Training

On average we have over 130 people either learning or training with us per day. This includes ESOL (English for Speakers of Other Languages) in partnership Bury Adult Learning and WEA.

In addition ADAB plays a critical roles in helping people from minority communities; those with limited English as well as Asylum Seekers and refugees with communication skills and confidence Building; job search CV preparation and assistance with living as active citizens in the UK and contributing to our economy.



This year we provided the following

- ESOL – beginners, Level 1 and Level 2
- IT / basic Computer Skills
- Employment skills
- Prep for Life in the UK test
- Driving Test Theory preparation

### 3. Community Services

Using a team of volunteers ADAB provides a wide range of community services that to support local residents and assist both Bury Council and the Bury

CCG at local level.

ADAB works with BAME women to develop skills and realise their own potential, especially those experiencing domestic violence, social exclusion or language barriers. During the last year over 300 women received support keep fit sessions; dancing; Yoga; boxing. Secondly ADAB supports women to overcome isolation and provides 1-2-1 support.

## Our Work & Achievements

### Brexit Readiness

As a result of Brexit, the EU Settlement Scheme (EUSS) was set up to enable EU citizens and their family members in the UK, to get the immigration status to continue to live in the UK. ADAB Brexit Readiness project provided information and support with these applications.

- 32 information drop in sessions held at the Mosses Centre.
- 326 families supported with online applications.
- 25 cases were referred to the CAB for additional support.
- 40 applications supported for indefinite leave to remain
- 10 applications made for British nationality.

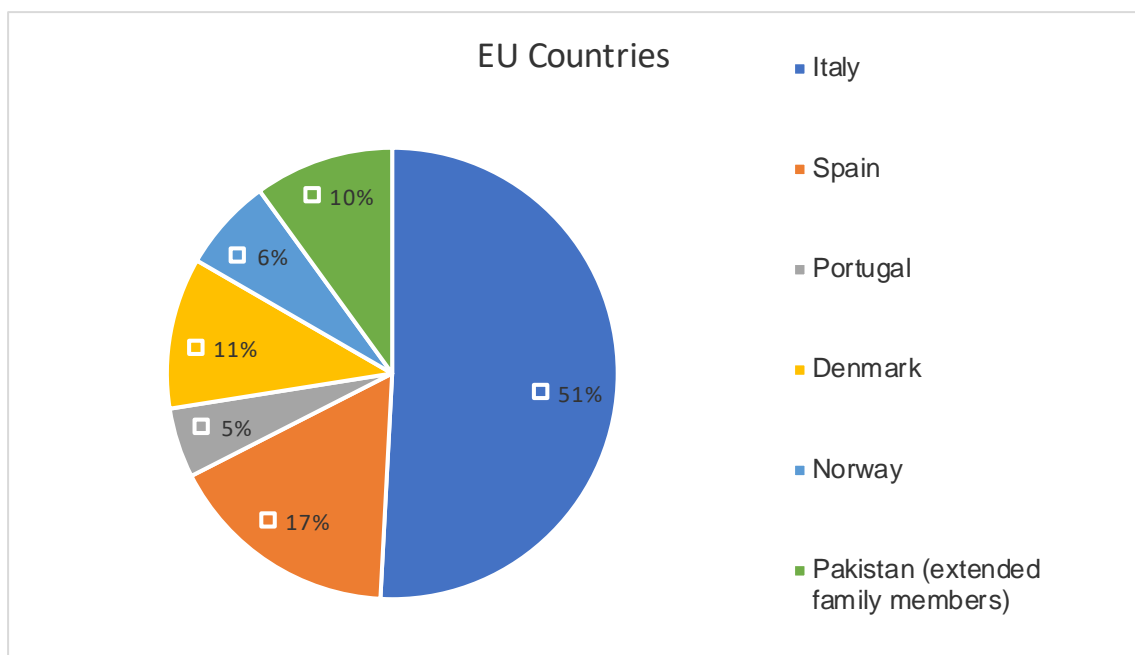
Many clients were assisted with other issues including

- registering children at schools
- GPs and dentist;
- DWP/Council benefits;
- Job-Centre employment support
- further education.



We not only signposted people to other services but actively supported some to get into ESOL classes, and various courses at Bury College.

Based on client feedback 70% of the applications we supported were successful. We believe the figure for successful applications could be higher but not everyone informed of the outcome.

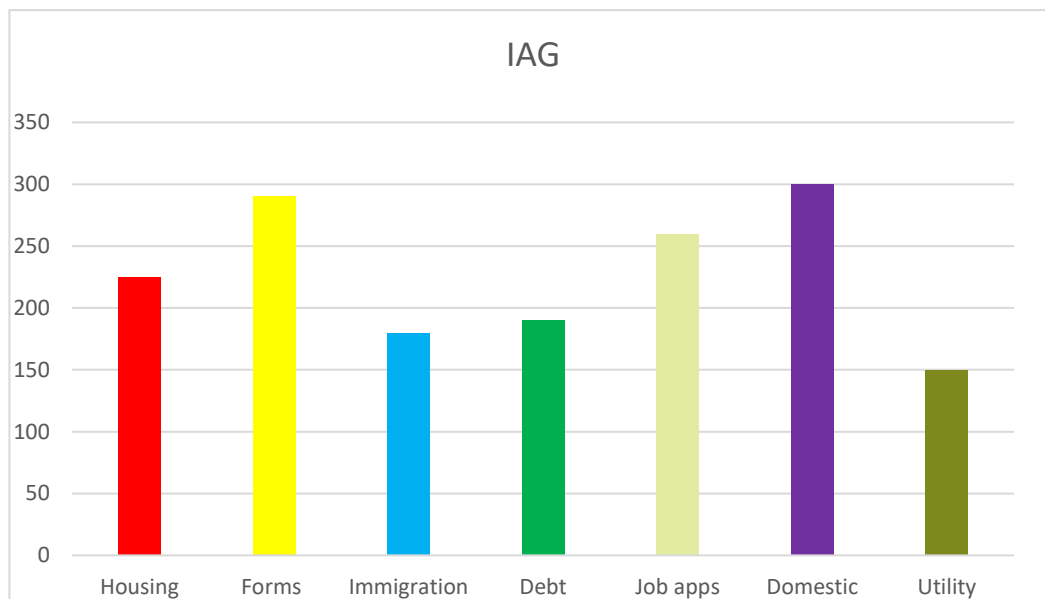


## Our Work & Achievements

### 4. Information Advice & Guidance

We work with approx. 800 people from BAME annually and support them with a range of activities that enable them to build their confidence, knowledge and skills, so they are able to access services, become healthier, become more active in the community and move into education, training or employment.

- over 1700 hours of 1-2-1 support with information, advice and guidance on a wide range of issues.
- 1100 clients with IAG support services.
- 225 with assistance on housing matters
- 290 people who speak little or no English fill in forms
- 180 guidance and signposting on Immigration and passport issues
- 190 people help with debt related advice
- 260 with jobs/CV
- 300 with Family/Domestic issues
- 150 help with Utilities



### 5. Social Clubs

## Our Work & Achievements

ADAB supports several local Community organisations with capacity building development support and a significant amount of practical help and organisational support this includes

- meeting room space
- place for their Activities
- Storage facilities
- Access to equipment
- Assistance with funding and bids
- Support for volunteers



The clubs currently being assisted and supported by ADAB are

- **Forces Veterans Club** – supporting our veterans to meet each other in a socially secure environment to help tackle loneliness isolation and help reduce the effects PTSD
- **Red Rose Overs 60's Club** – Music and social club that helps those over 60 to live independently for longer by providing a social activities and a friendship group, this included lunch club; music and other social activities
- **Jazz Club** – music club for those interest in Jazz
- **SAMA Council** – Music club for those with and interest South Asian music and signing



- **Cine Club** – For those with an interest in cinema reels and projectors nostalgia

### 6. Sports & Leisure

ADAB provides sports an leisure activities in a culturally sensitive manner which encourages and enables BAME women to participate, develop skills and realise their own potential. , especially those experiencing domestic violence, social exclusion or language barriers.

In the year over 300 women participated in keep fit; dancing; Yoga; and boxing sessions.

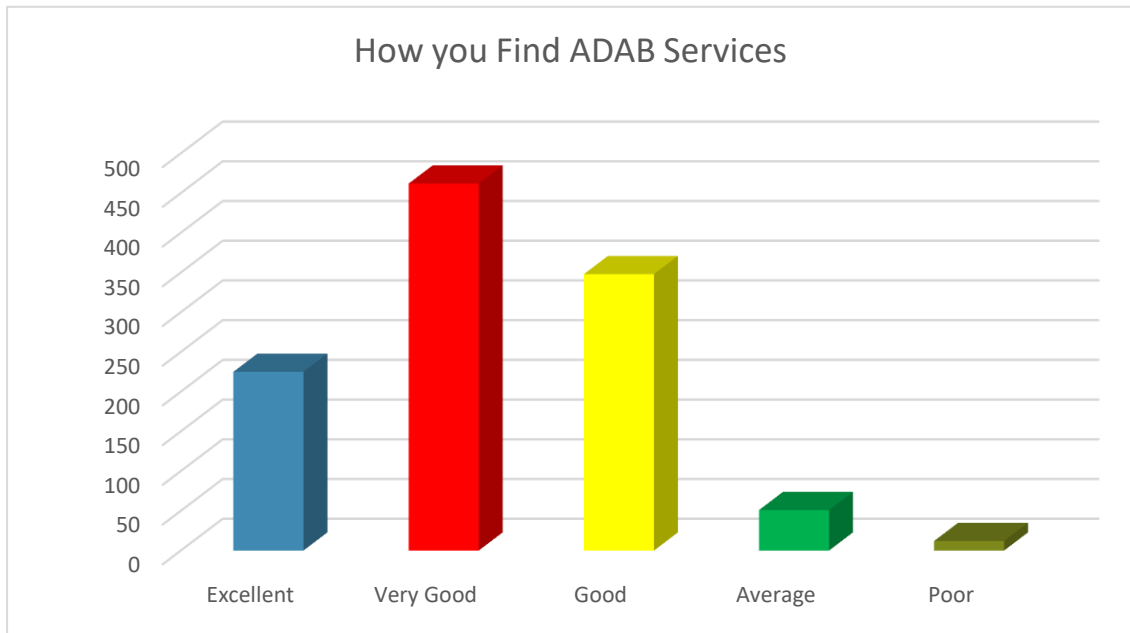
## 7. Health & Social Care

ADAB has been providing Health & Social Care services to the local BAME community in Bury over the last 8 years. ADAB provided appropriate language and culturally sensitive services, practical support, guidance and help either through individual and/or group work, building confidence to enable people to access mainstream support services for early professional help or treatment before crisis stage

- 220 women with support on Domestic Violence which included; Welfare benefits housing/accommodation;
- raise awareness of mental health and educate BAME communities, (including asylum seekers and refugees), break down barriers and change attitudes and perceptions of mental health
- Main stream Mental Health crisis support very good, the huge gap is that BAME communities are excluded from prevention and low level support. ADAB fills this huge Gap with limited resources
- BAME access to non-crisis mental health services is generally very poor, and many BAME communities do not access support due to the stigma attached to mental health as well as language and cultural challenges, lack of trust and lack of awareness of the support available.
- Asylum seekers/refugees mainly from Syria, Iran, Iraq, Afghanistan experienced war, persecution, flight, as well as isolation, loss, separation from families, compounded by adjusting to a new country, different culture, language and prejudice and discrimination.
- Our assistance
  1. **Connect** – connecting with family, friends, colleagues, new people can strengthen relationships and improve an individual’s wellbeing
  2. **Learn** – learning a new skill, language or subject, engaging in work enhances self-esteem and encourages social interaction and a more active life
  3. **Be Active** – any physical activity or movement can improve and increase an individual’s physical body & mental wellbeing; can make you feel good about yourself and be more positive.
  4. **Take Notice** – being present in the moment, appreciating what matters; being more self aware and of your environment can improve making positive life choices and increase motivation
  5. **Give** – taking part in your local community; volunteering, giving back; helping others can foster sense of happiness, satisfaction and improves self-worth



## Our Work & Achievements



### 8. Mosses Centre

ADAB supported Bury Council and took over the Mosses Centre saving it from bankruptcy and closure. The building was in a poor state and unsafe for the community to use. We systematically set about undertaking essential repairs and ensuring compliance with health & safety. This was done entirely by ADAB through community fundraising and without recourse to public grants/funding from Bury council.

We are really pleased that the centre is looking really refreshed and is in use daily by over 1000 people weekly

- 300 children attend the preschool nursery
- 200 people attend 4 separate ESOL classes
- 160 attend one or more of the social clubs
- 100 people come for IAG support
- 200 people use one or more of the community facilities
- 100 people use the COVID testing facility
- 82% of people using the Mosses Centre participants rate the services as Very Good or Excellent
- 89% said they would not have managed without support from ADAB
- 98% women said they very feel safe and welcomed at Mosses



## Future Plans and Development

- 92% of refugees said they rely on Mosses to guide them

### 9. Music & Arts

SAMA (South Asian Music and Arts) Council provides a significant amount of Music and Arts services to the local community at the Mosses centre. This includes weekly amateur singing and music lessons and practice; live music concerts.



SAMA with the help of ADAB is now looking to develop lessons in Harmonium; Key Board; Tabla, Daf and Dhol.

### 10. BAME Infrastructure Support

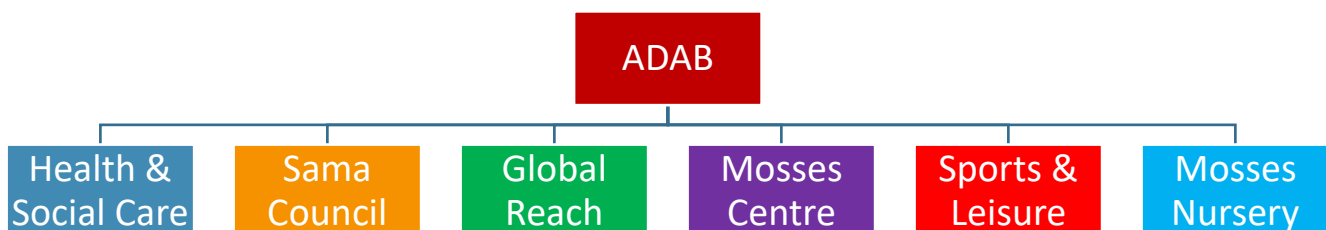
Our Global Reach programme raised funds through local business and community to fund educational development in rural Pakistan.

ADB managed and ran the Active Citizens Programme to help new and emerging communities to settle and become active local community members. 35 people participated and completed the full programme successfully

We have been very actively supporting and working with Bury Councils Community Cohesion programme Standing Together in the local community to help improve and enhance links between our various communities.

### Plans for Development

- Develop a non-crisis mental health support service



- Set up out of school home work and childcare club

## Case Studies

- Securing Advice Service’s AQS (Advice Quality Standard) accreditation at Generalist Level so that we can ensure a better quality of provision
- Explore options of a partnership with a local law firm staff to provide some outreach legal advice surgeries at the Mosses Centre on a pro bono basis. Due to Aid restrictions, this service will enable many people who have no access, to obtain legal advice.
- Further Develop and enhance the Mosses Centre and its facilities
- Develop older women’s day Care facilities
- Community Development – BAME



### Case Study 1

S has had no previous work experience or qualifications in the UK. The main barriers before starting the project were lack of confidence and the language barrier to her lack of English-speaking skills. With young children childcare was also a barrier.

S’s understanding of the English language has improved which has in turn given her greater confidence to respond to questions and be able to speak up. During the course of the project, S moved into another class which was more suited to her new level of English. She was one of the few



learners who progressed onto a new level

during the course itself. S will also continue to attend her English course at Bury College, which the STEP course was an effective supplement to.

S has quoted that her mental health has improved since joining the project because of her increase in confidence and self-esteem. The motivation she now has to join other courses and training makes her feel positive about going out of her comfort zone and experiencing new things. She is very keen to join further courses that will improve her confidence and English and is motivated to pursue further training and hopefully employment.

## Case Study 2

A wanted to pursue a career in broadcasting, however Covid was making the already challenging experience of gaining successful employment even more difficult. She came across the Princes Trust funded 'WorkWild' programme facilitated by the ADAB centre and Lancashire Wildlife Trust.

Alongside having upskilling, gaining experience and improving her CV, A was also interested in improving softer employability skills, such as pushing herself to try new things, gaining confidence and improving wellbeing and resilience. Once signed up, A whole heartedly committed to the 12-week WorkWild programme.

2 months after completing WorkWild, A successfully gained employment with a national media company, in a role she was very pleased to take. She directly thanked ADAB for giving her extra skills and confidence to secure her new position.



## One Community One Bury



Charity Registered Number: 1094722

**Asian Development Association of Bury**

**A D A B**

**Trustees' Report and Financial Statements**

**for the Year Ended 31 March 2021**

# ASIAN DEVELOPMENT ASSOCIATION OF BURY

---

## CONTENTS

	Page
Legal and Administrative Information	3
Independent Examiner's Report	4
Statement of Activities	6
Balance Sheet	7
Notes to the accounts forming part of the financial statements	8
Trustees' Statement on Financial Statements	14



## **Independent Examiner's Report to the Trustees of Asian Development Association of Bury**

I report on the accounts of the charity for the year ended 31 March 2021, which are set out on pages 6-13.

### **Respective responsibilities of trustees and examiner**

The trustees (who are also the directors of the charity for the purposes of charity law) are responsible for the preparation of the accounts. The trustees consider that an audit is not required for this year under section 144 of the Charities Act 2011 ( the 2011 Act ) and that an independent examination is needed.

Having satisfied myself that the charity is not subject to audit under Company law and is eligible for independent examination, it is my responsibility to:

examine the accounts under section 145 of the 2011 Act;

to follow the procedures laid down in the General Directions given by the Charity Commission under section 145(5)(b) of the 1993 Act;

and to state whether particular matters have come to my attention.

### **Basis of independent examiner s report**

My examination was carried out in accordance with the General Directions given by the Charity Commission. An examination includes a review of the accounting records kept by the charity and a comparison of the accounts presented with those records. It also includes consideration of any unusual items or disclosures in the accounts and seeking explanations from you as trustees

concerning any such matters. The procedures undertaken do not provide all the evidence that would be required in an audit, and consequently no opinion is given as to whether the accounts present a true and fair view, and the report is limited to those matters set out below. This report is made solely to the charity's board of trustees, as a body, in accordance with the General Directions given by the Charity Commission. My examination has been undertaken so that I might state to the charity's trustees those matters I am required to state to them in an Independent Examiner's report and for no other purpose. To the fullest extent permitted by law, I do not accept or assume responsibility to anyone other than the charity and the charity's trustees as a body, for my examination, for this report, or for the opinions I have formed.

**Independent examiner's statement**

In connection with my examination, no matter has come to my attention:

(1) which gives me reasonable cause to believe that in any material respect the requirements to keep accounting records in accordance with section 386 of the Companies Act 2006; and

(2) to prepare accounts which accord with the accounting records, comply with the accounting requirements of section 396 of the Companies Act 2006 and with the methods and principles of the Statement of Recommended Practice: Accounting and Reporting by Charities; have not been met; or

(3) to which, in my opinion, attention should be drawn in order to enable a proper understanding of the accounts to be reached.

S Ali FCCA Bsc(Hons)  
22 Regent Street  
Bury  
BL9 5AT

Dated 15/01/2022

Signed



**ASIAN DEVELOPMENT ASSOCIATION OF BURY**

**Statement of Financial Activities**

for the Year Ended 31 March 2021

		Restricted Funds 2021 £	Unrestricted Funds 2021 £	Total Funds 2021 £	Total Funds 2020 £
	Notes				
<b><u>INCOMING RESOURCES</u></b>					
<b>Incoming resources from generated Funds</b>					
Voluntary Income	5.2	281,699		281,699	144,886
Donations		-	0	0	-
Activities for generating funds	5.3	-		0	-
Investment Income	5.4	-	40,775	40,775	30,394
		281,699	40,775	322,474	175,280
Other Incoming Resources		-	-	-	-
<b>TOTAL INCOMING RESOURCES</b>		<b>281,699</b>	<b>40,775</b>	<b>322,474</b>	<b>175,280</b>
<b><u>RESOURCES EXPENDED</u></b>					
Charitable Activities	5.6	114,808	-	114,808	87,622
Support Costs		82,972	-	82,972	55,271
<b>TOTAL RESOURCES EXPENDED</b>		<b>197,780</b>	<b>-</b>	<b>197,780</b>	<b>142,893</b>
<b>NET INCOMING/ (OUTGOING) BEFORE TRANSFERS</b>		<b>83,919</b>	<b>40,775</b>	<b>124,694</b>	<b>32,387</b>
Exceptional item (gain on disposal)				0	3,467
<b>TOTAL SURPLUS</b>				<b>124,694</b>	<b>35,854</b>
<b>Gross transfers between funds</b>					
Net Movements in Funds		83,919	40,775	124,694	
<b>TOTAL FUNDS AT 1 APRIL 2020</b>					<b>779,955</b>
<b>TOTAL FUNDS AT 31 MARCH 2021</b>					<b>904,649</b>

**ASIAN DEVELOPMENT ASSOCIATION OF BURY**

---

**Balance Sheet**

As at 31 March 2021

	Notes	2021	2020
<b>FIXED ASSETS</b>			
Tangible fixed assets	5.8	367,997	369,028
<b>CURRENT ASSETS</b>			
Stocks		3,500	3,500
Debtors	5.9	56,885	55,376
Cash at bank and in hand		<u>478,737</u>	<u>354,772</u>
		539,122	413,648
<b>CREDITORS: amounts falling due within one Year</b>	5.10	2,470	2,721
<b>NET CURRENT ASSETS</b>		536,652	410,927
<b>TOTAL ASSETS LESS CURRENT LIABILITIES</b>		904,649	779,955
<b>CREDITORS: amounts falling due after more than one year</b>		-	-
<b>TOTAL ASSETS - LIABILITIES</b>		<u><u>904,649</u></u>	<u><u>779,955</u></u>
<b>NET ASSETS</b>			
<b>CHARITY FUNDS</b>			
Restricted –Fixed Asset Funds		367,997	369,028
Restricted - Designated Funds		437,127	321,783
Unrestricted - General Funds		99,525	89,144
		<u><u>904,649</u></u>	<u><u>779,955</u></u>

## **6. Notes to the Financial Statements**

### **5.1 ACCOUNTING POLICIES**

The Board of Trustees (Management Committee) submit their annual report and financial statements for Asian Development Association of Bury (the charity) for the year ended 31 March 2021

**Basis of preparation:** The financial statements have been prepared under the historic cost convention, and in accordance with the Statement of Recommended Practice: Accounting and Reporting by Charities (SORP 2005) issued in March 2005 and applicable UK Accounting Standards. Restricted funds are funds, which are to be used in accordance with specific restrictions imposed by the donor or trust deed.

**Unrestricted income funds** comprise those funds, which the trustees are free to use for any purpose in furtherance of the charitable objects. Unrestricted funds include designated funds where the trustees, at their discretion, have created a fund for a specific purpose.

**Incoming resources:** All incoming resources are recognised once the charity has entitlement to the resources, it is certain that the resources will be received and the monetary value of incoming resources can be measured with sufficient reliability.

**Resources expended:** Liabilities are recognised as resources expended as soon as there is a legal or constructive obligation committing the charity to the expenditure. All expenditure is accounted for on an accruals basis and has been classified under headings that aggregate all costs related to the category.

**Allocation of overhead and support costs:** Overhead and support costs have been allocated first between charitable activity and governance. Overhead, and support costs relating to Charitable Activities have been apportioned based on the value of individual projects.

**Charitable activities:** Costs of charitable activities include those costs which are directly related to the setting up of charitable activities such as tutoring and mentoring costs plus the costs of holding the activities and events.

## ASIAN DEVELOPMENT ASSOCIATION OF BURY

Support Costs: Support costs comprise all costs involving the public accountability of the charity and its compliance with regulation and good practice. These costs include rent and rates, premises, and administration and support costs.

Tangible fixed assets and depreciation: All assets (or similar class of assets) costing more than £500 are capitalised and valued at historic cost. Depreciation is charged on furniture and equipment, which is written off on a 25% reducing- balance basis over their estimated useful life. Similarly, computer and related equipment are written-off on a straight-line basis over their estimated useful life of three years. Land and Buildings, purchased are held at the cost are not depreciated.

The financial statements do not include a cash flow statement because the charitable charity, as a small reporting entity, is exempt from the requirement to prepare such a statement under the Financial Reporting Standard for Smaller Entities (effective January 2005).

### 5.2

#### VOLUNTERY INCOME

	Restricted Unrestricted		Total Funds 2021 £	Total Funds 2020 £
	Funds	Funds		
	£	£		
Bury MBC	-	-	-	25,400
BALC	25,584	-	25,584	7,898
British Council	6,142	-	6,142	12,558
Bury MBC - BAME	24,784	-	24,784	-
Workers Education Association	12,002	-	12,002	4,216
Good Things Foundations	-	-	-	1,250
NHS England	6,309	-	6,309	6,000
National Lottery Funding	78,992	-	78,992	50,121
Action Together	-	-	-	369
Bury VCFA	13,471	-	13,471	12,775
Brexit Fund	-	-	-	24,300
CJRS	62,230	-	62,230	-
Persona CP	11,250	-	11,250	-
Kankellychase Foundation	5,000	-	5,000	-
Unlimited Potential GM Covid	5,000	-	5,000	-
Price's Trust PT	24,946	-	24,946	-
Bury MBC C/S	5,990	-	5,990	-
<b>TOTAL</b>	<b>281,699</b>	<b>-</b>	<b>281,699</b>	<b>144,886</b>

## ASIAN DEVELOPMENT ASSOCIATION OF BURY

---

	Restricted Funds 2021 £	Unrestricted Funds 2021 £	Total Funds 2021 £	Total Funds 2020 £
<b>5.3</b>				
<b>ACTIVITIES FOR GENERATING FUNDS</b>				
Venue Hire	-	-	-	-
	-	-	-	-
<b>5.4</b>				
<b>Investment Income</b>	-	<b>59</b>	-	<b>84</b>
<b>Rental Income/Trust Income</b>	-	<b>36,716</b>	-	<b>27,310</b>
<b>SMP and PAYE NIC allowance</b>	-	<b>4,000</b>	-	<b>3,000</b>
	-	<b>40,775</b>	-	<b>30,394</b>

## ASIAN DEVELOPMENT ASSOCIATION OF BURY

---

### 5.6

#### ANALYSIS OF EXPENDITURE

	Charitable Activity £	Support Costs £	Total Costs £
Wages and salaries(staff and volunteers-notional)	95,638	31,879	127,517
Employer national insurance	-	8,945	8,945
Sessional Work/Projects and events	16,328	-	16,328
Heating and lighting	-	7,184	7,184
Telephone and Internet	-	2,380	2,380
Insurance	2,072	-	2,072
Printing stationary and postage	770	770	1,540
Water charges		5,515	5,515
Bank charges	-	177	177
Sundry expenses	-	3,943	3,943
Repairs and maintenance	-	21,148	21,148
Depreciation	-	1,031	1,031
Change in Stock		0	0
<b>TOTAL</b>	<b>114,808</b>	<b>82,972</b>	<b>197,780</b>

#### STAFF COSTS AND NUMBERS

Staff costs were as follows:

	2021 £	2020 £
Gross wages, salaries and benefits in kind	127,517	99,148
Employer's National Insurance costs	8,945	7,208
	<u>136,462</u>	<u>106,356</u>
Average Number of Employees	9	9

## ASIAN DEVELOPMENT ASSOCIATION OF BURY

---

### 5.8

### FIXED ASSETS

Cost	Land and Building	Computers, Fixtures and Fittings	TOTAL
	£	£	£
At 1 Apr 2020	364,905	51,499	416,404
Additions	-		-
Disposals		-	-
At 31 Mar 2021	<u>364,905</u>	<u>51,499</u>	<u>416,404</u>

### DEPRICIATION

Depreciation	Land and Building	Computers, Fixtures and Fittings (25%)	TOTAL
	£	£	£
At 1 Apr 2020	-	47,376	47,376
Dep'n Charge	-	1,031	1,031
Disposals	-	-	
At 31 Mar 2021	<u>-</u>	<u>48,407</u>	<u>48,407</u>

### NET BOOK VALUE

	Land and Building	Computers, Fixtures and Fittings	TOTAL
	£	£	£
At 1 Apr 2020	364,905	4,123	369,028
At 31 Mar 2021	364,905	3,092	367,997

## ASIAN DEVELOPMENT ASSOCIATION OF BURY

### 5.9

#### CURRENT ASSETS

	2021	2020
Due within one year	£	£
Stocks	3,500	3,500
Trade debtors	2,640	1,340
Other debtors	53,691	53,691
Prepayments and accrued income	554	345
	<u>60,385</u>	<u>58,876</u>

### 5.10

#### CURRENT LIABILITIES

	2021	2020
Due within one year	£	£
Trade creditors	0	0
Other creditors	0	0
Tax and National Insurance Contributions		217
Accruals & deferred income	-	2,504
	<u>2,470</u>	<u>2,721</u>
Amount falling due after more than One year	0	0

### 5.11

#### RELATED PARTIES

There are no transactions with related parties during the financial year ended 31 March 2021, except for Dr Usman Arif and Dr Lal Khan were reimbursed for the expenses incurred when acquiring goods for Adab's use for the amount of £1,919.89 and £3,698.95 respectively.

#### CORPORATION TAX

The charity is exempt from tax on income and gains falling within S505 of the Income & Corporation Taxes Act 1988 (ICTA 1988) or S256 of the Taxation of Chargeable Gains Act 1992 to the extent that these are applied to its charitable objects. No Charges have arisen in the charity.

**6. TRUSTEES' STATEMENT ON FINANCIAL STATEMENTS**

**Trustees' statements required by Section 249B (4) for the year ended 31 March 2021**

In approving these financial statements as trustees of the charity we hereby confirm:

that we acknowledge our responsibilities for:

(1) ensuring that the charity keeps accounting records which comply with Charity

(2) preparing financial statements which give a true and fair view of the state of affairs of the Charity as at the end of the financial year and of its financial statements for the year then ended in accordance with the provisions of the Charities Act relating to financial statements, so far as applicable to the Charity.

The financial statements were approved by the Board on 16th January 2021 and signed on its behalf by:

**Dr. Lal Khan**  
**Chairman Trustee**



DATED

15/01/2022