

The Froglife Trust

*Leaping forward for amphibian
and reptile conservation
Working together to save the species*



ANNUAL REPORT AND ACCOUNTS October 2023 - September 2024



TRANSFORMING LANDSCAPES

TRANSFORMING LIVES

TRANSFORMING RESEARCH

CONTENTS

ABOUT FROGLIFE.....	3
ACHIEVING OUR VISION AND MISSION.....	6
PUBLIC BENEFIT	7
HEALTH & SAFETY	7
ENVIRONMENTAL ACTIONS	8
STRUCTURE, GOVERNANCE AND MANAGEMENT	10
REMUNERATION OF KEY MANAGEMENT PERSONNEL	11
TRANSFORMING LANDSCAPES.....	12
TRANSFORMING LIVES	16
TRANSFORMING RESEARCH	24
TRANSFORMING COMMUNICATIONS	25
TRANSFORMING FROGLIFE ECOLOGICAL SERVICES (FES)	27
TRANSFORMING OUR FUTURE.....	28
RISK MANAGEMENT AND INTERNAL CONTROLS.....	30
FINANCIAL REVIEW.....	34
RESERVES POLICY	34
INVESTMENT POLICY	34
CORPORATE SPONSORS.....	34
STATEMENT OF TRUSTEES' RESPONSIBILITIES	35
ACCOUNTS	36

ABOUT FROGLIFE

The Froglife Trust (known as Froglife) is a national nature conservation charity with a specific focus on reptiles and amphibians and their habitats. Froglife's vision is a world in which reptiles and amphibian populations are flourishing as part of healthy ecosystems. Amphibians are declining globally at a faster rate than birds and mammals. These declines are being witnessed in the UK. Using the IUCN Red List methodology an assessment of extinction risk has been undertaken to establish the UK's amphibian and reptile status. The exercise revealed that 4 out of 13 species (31%) are in one of the "Threatened" categories. The assessment listed the common toad as "Near Threatened", and the adder as "Vulnerable in England and "Near Threatened" at all other scales. As reptile and amphibian species are an integral part of our ecosystem, it is essential that we work together to address these declines.

At Froglife we believe we can reverse reptile and amphibian declines by raising awareness, enhancing knowledge, restoring, and creating habitats, undertaking species condition monitoring, and surveying and encouraging as many people as possible from all sectors of society to act. To ensure that our work is sustainable we deliver an extensive volunteer programme, training volunteers across the UK in species and habitat management. We also recognise that our donors want to be reassured that the habitat sites that they are funding will remain in optimum condition for the foreseeable future, which of course also fits Froglife's objectives. To ensure this we have a commitment in our Strategy to review all habitat works undertaken by Froglife 1, 3, 5 & 10-years post completion.





Menstrie Pond monitoring - TCV

“The frog bench is a big hit within the community and at the last clean of the pond (using the donated Froglife waders) we found Palmate Newts living in our show pond, so we (Menstrie Community and TCV / EPIC) stopped everything as we were in the wrong time cycle for them.

Menstrie will be making a home for a couple of pollinator sensors.

THANK you once again from a very happy community project.”

Evidence of post project monitoring – Come Forth for Wildlife (Froglife) & TCV partnership

“I just wanted to let you know that this year I was astonished to see the thriving frog population in the pond. It was teeming with them. All various sizes. I’d like to think that as well as the wet conditions being possibly favourable that the hibernaculum may have played a bit of a role as well as it has been in place now for a while and so might be a potential hang out over the winter.”

This year we developed our Habitat Hub, an online system making it easier for surveyors visiting sites to record their data. This will help us to monitor sites, providing valuable data for future projects and research.

Our work is grass roots, applied, evidence-based conservation. The habitat works benefit countless species from aquatic invertebrates and plants, to amphibians, reptiles, birds, and mammals. Our conservation projects enhance the UK’s biodiversity.

This holistic approach to nature conservation enables us to take individuals on a wildlife journey, whilst also delivering quantifiable results for our reptile and amphibian species.

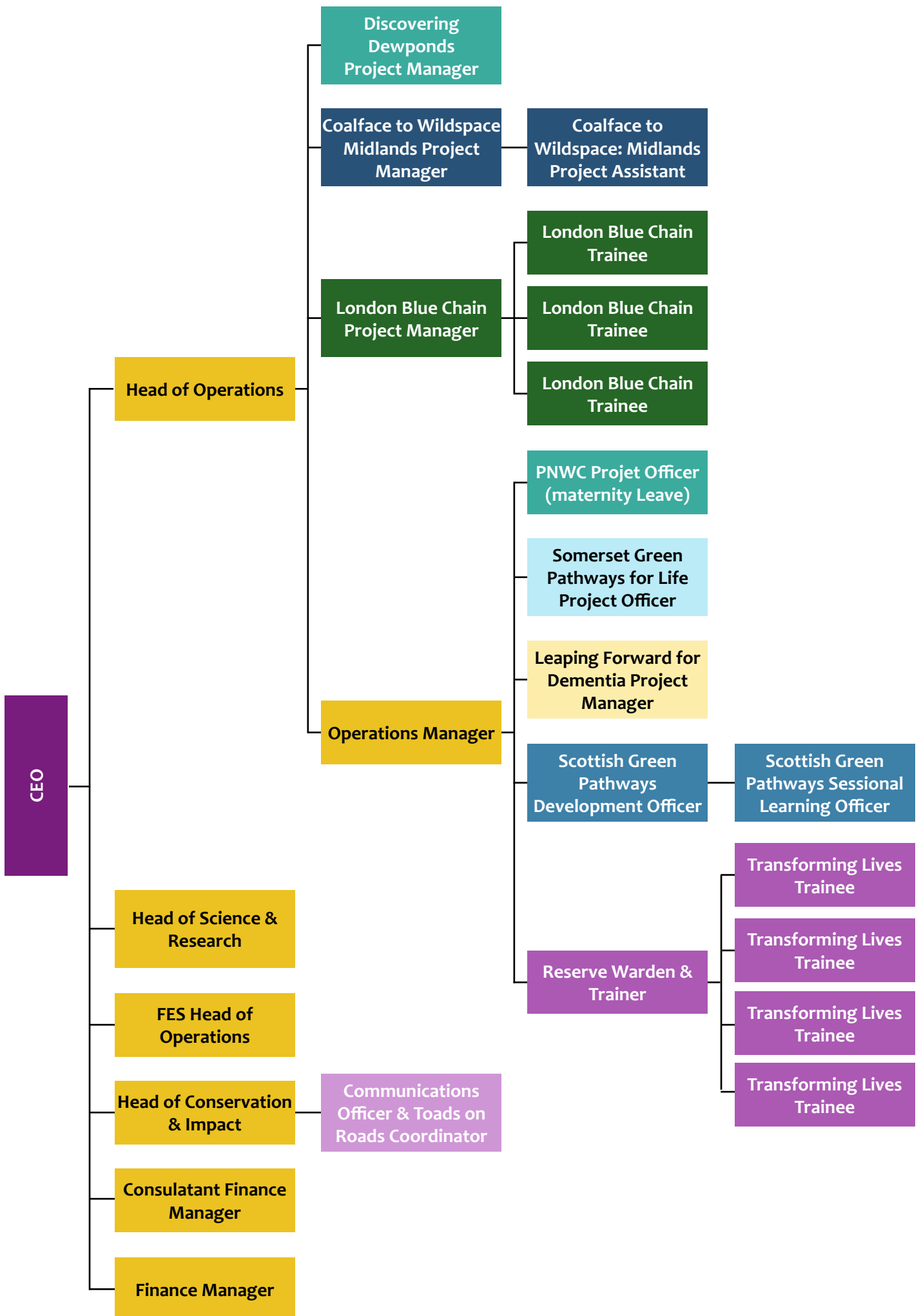
The strategic direction of Froglife is set by the board of trustees, consisting of 10 trustees, who collectively

bring a range of expertise, have ‘lived’ experiences, and go some way towards reflecting the diversity of the UK population.

During 2022 we developed our seven-year strategy covering January 2023 – December 2030. This is in line with UK individual country targets of 30% recovery by 2030 (30/30) and the Environment Act’s aim to halt biodiversity loss by 30% of land and sea by 2030 in England. In March 2024 we held a staff/trustee strategy away day where we reviewed progress against targets set in the strategy. Overall, we are well on track to deliver against the targets, however there were a couple of areas that we need to put more focus on and SMT have developed an action plan with a timetable to address these areas over the forth coming year.

The delivery of the strategy and the day-to-day management of the organisation is delegated to the (CEO) who is supported by the Senior Management Team (SMT). The SMT meet every six-eight week and organisational strategy, project delivery and financial management is reviewed at each meeting.

The Froglife Trust and its subsidiary company Froglife Ecological Services did not receive any complaints during the year regarding the charity or the subsidiary company. No complaints were received during the year about any of those that have represented either the charity or the subsidiary company .



ACHIEVING OUR VISION AND MISSION

We achieve our vision and mission through three work streams:



Our work is underpinned through our organisation values:

- Froglife works inclusively but actively engages with those not usually involved in nature conservation.
- Froglife operates to the highest standards with all stakeholders.
- Froglife will have a positive impact on the environment through its activities.

Froglife will foster an environment that encourages innovation and diligence amongst staff, trustees, and volunteers.

It is supported by:

- Our Finance Team
- Our facilities and resources
- Our communications and marketing

Froglife believes that it can only address the nature crisis by ensuring that those that engage with Froglife represent the full range of communities/demographics of the UK population. We focus particularly on communities and individuals who are currently under-served by the nature conservation sector. Our success in ensuring that under-served communities are 'welcomed' by Froglife is evidenced through our project delivery, and the many amazing outcomes and outputs delivered by these communities. There are quotes, statistics and photos throughout this Annual Review highlighting the huge contribution made by these communities towards the conservation of the UK's native reptile and amphibian species.

Our work helps:

- To alleviate stress in busy urban environments.
- To improve mental and physical well-being.
- To build community cohesion.
- To foster environmentally friendly communities.

Our work is underpinned by our volunteer force which includes volunteer groups working on nature reserves managed by Froglife, Toads on Roads patrollers, back-office volunteers and volunteers helping with project delivery. This year 788 volunteers helped us contributing a total of 3254.25 hours. Additionally, thousands of Toads on Roads volunteers rescue toads from busy roads during the migration season. We also appreciate the support that we receive from local Amphibian and Reptile Groups and The Conservation Volunteers Scotland. Their volunteers are helping us to monitor some of the sites and submit their findings to Froglife.

ENVIRONMENTAL ACTIONS

We continue to work to reduce our environmental impact across all our projects. As a national organisation, one of our main impacts is travel, and the use of heavy equipment for habitat works. We have found ways to use more environmentally friendly forms of transport, and through use of virtual channels have reduced the need to travel to meetings. Most of our staff work remotely, working predominantly from home, this reduces travel to and from offices. We are in the process of evaluating the environmental impact of using heavy machinery for habitat works to access the trade-off between the benefits of habitat restoration and creation for carbon capture as well as enhancing biodiversity, and the potential negative environmental impacts. We will assess how to address this once we have the conclusions from the evaluation.

We expect all staff to upcycle, recycle and re-use materials wherever possible, to avoid using plastic in any project materials, to use sustainably sourced wood and other materials.

We have calculated our carbon footprint for 2023-24, including scope 1, 2 and 3. We used the methodology and data sources which were developed by a paid intern funded via Bath University in 2022-23, and we have improved our methodology and detail in 2023-24. Our carbon footprint is low compared to other organisations, and it confirms that our main impacts are through embedded energy in the materials we use. We are analysing the data to prioritise the actions we need to take for the future.

We have monitored our electricity, gas, water, and paper usage since 2019. Since moving into the new office in Peterborough, which is a shared Business Hub, we have found it difficult to obtain energy usage from the building managers. We continue to try to address this through using other means.

Froglife is committed as an organisation to reach net zero by 2030. We will be joining the Fit for the Future, a networking group, supporting organisations to reach net zero.

Diversity, Equality and Inclusion

Froglife is committed to social justice, and to tackling injustice and inequality. Since 2007 Froglife has been delivering projects designed entirely to empower new audiences and those often excluded from nature conservation initiatives to take action to help conserve the UK's natural environment, particularly focusing

on reptiles, amphibians, freshwater and terrestrial habitats. We have delivered projects working with young offenders, disadvantaged and/or vulnerable children and young people, young people leaving care, young carers, LGBTQ families, ethnic minority groups, people with mental and/or physical disabilities, men as part of a MENTAL wellbeing programme and others. However, we recognise that we still have a long way to go to be a truly Diverse, Equitable, and Inclusive organisation. To address this, we have undertaken several initiatives and continue to build on these:

- We have improved our EDI data collection and now monitor EDI for staff, volunteers, Trustees, and recruitment.
- We have improved our systems for recruitment which has had a positive impact on the diversity of staff that we recruit.
- As discussed in an earlier section we have widened our board of trustees.
- CEMVO delivered Anti-Racism training to staff.
- Through our membership of Wildlife and Countryside LINK we are benefiting from the EDI working group's road map, which we are adapting to suit our needs.
- Our Operations Manager sits on Scottish Environment LINK EDI working group and presented on Froglife's EDI journey at a Scotlink Webinar in 2024.
- We altered our wording from Christmas shut-down to End of Year shut-down, to move away from any religious bias.
- We have set up a Froglife staff EDI working group with 4 staff with a diverse range of backgrounds.

Staff wellbeing

Froglife has had a long-term commitment to mental health and staff wellbeing, and has strong support systems in place through, for example, our appraisal and supervision system, and our peer mentor programme. This is formalised through our Wellbeing Strategy. This year we have maintained and extended the support provided, for example by gaining support for individual staff through the Access to Work programme. Following feedback from staff we are improving our induction system and providing more opportunities for staff to visit each other in person.



STRUCTURE, GOVERNANCE AND MANAGEMENT

Registered name: The Froglife Trust operating under the name of Froglife.

Charity Registration Number: 1093372 (England & Wales); SC014854 (Scotland).

Bankers: Barclays Bank Plc, 1 Church Street, Peterborough, PE1 1XE.

Auditors: Saffery, Chartered Accountants, Westpoint, Peterborough Business Park, Lynch Wood, Peterborough, PE2 6FZ .

The trust is a company limited by guarantee and is constituted by its trust deed. The trust has a subsidiary undertaking, Froglife Ecological Services (FES), the subsidiary offers a range of ecological services with all profits donated to the charity .

The trust has two patrons Mr Jules Howard and Ms Kate Bradbury. Together they bring a wealth of wildlife conservation, education, digital technology broadcasting and writing skills. Both contribute an enormous amount of time and energy to the work of the trust.

The trustees, who are also directors for the purpose of company law, and who served during the year were:

Ms Inez Smith (Chair)

Professor Roger Downie (Vice Chair)

Mr Frank Clark

Dr Philip Wheeler

Dr Silviu Petrovan

Mr Gordon Maclellan

Mr Xavier Mahele

Dr Charlotte Louise Regan – elected 14th December 2023

Ms Melissa Jane Solly – elected 14th December 2023

Mr Richard Yates – elected 14th December 2023

None of the trustees have any beneficial interest in the company. All the trustees are members of the company and guarantee to contribute £10 in the event of insolvency.

The Froglife Trust is governed by its Trustee Board which is responsible for setting the objectives and policies of the charity. The trustees ensure that the

charity satisfies its legal and contractual obligations. The Board of Trustees meet at a minimum quarterly.

The Board of Trustees are also responsible for the charities subsidiary company, Froglife Ecological Services (FES). FES provides a range of ecological services that are paid for by its clients. All profits are donated to the charity .

The Board of Trustees serve a term of three years, at the end of their three-year term they can be re-elected to serve another three-year term, there is no limit to the number of terms that they can serve. New trustees are elected through a recruitment process and are advertised externally with an aim to fill any skills gaps that have been identified within the existing board of trustees .

Senior Management Team (The Froglife Trust) consists of:

Chief Executive Officer – Kathy Wormald

Head of Operations – Sheila Gundry

Head of Conservation & Impact Manager – Jenny Tse-Leon (returned from maternity leave June 2024)

Head of Science & Research Manager – Dr Andrew Smart (initially maternity leave cover but remains in a new role with a contract until July 2025)

Senior Management Team (Froglife Ecological Services) consists of:

Chief Executive Officer – Kathy Wormald

Head of Operations – James McAdie



REMUNERATION OF KEY MANAGEMENT PERSONNEL

At the Board of Trustees meeting in December 2023, in recognition of inflation costs and based on the charity’s financial stability, the trustees approved a 7% pay-rise for all staff members. The pay-rise came into effect from January 2024.

Other pay reviews are conducted on a staff-by-staff basis and are increased if roles have changed, and they have moved into the next grade. The CEO’s salary is set and reviewed by the board of trustees on guidance from the chair. The last review was in November 2014 to ensure that the salary was comparable with other CEO positions within the sector and with similar levels of responsibility. The board is of the view that the salary remains comparable, and no further review is required.

Relationships with related parties and other charities and organisations with which Froglife co-operates in pursuit of its charitable objectives:

In 2023 the trustees took the decision to become a member of Wildlife and Countryside LINK, they felt that with the plethora of new government legislation at a UK wide level, it was important that Froglife was represented in discussions and inputted into central government consultations over proposed new legislations that could potentially impact on the operations of the charity. The Head of Conservation & Impact and the Head of Research & Science represents Froglife on relevant sub-groups and keep a watching brief on other groups.

In this year Froglife has reviewed 56 consultations, letters, or policy statements from Wildlife and Countryside Link (WCL) or its members and have signed up to 49 documents as a participating member.

Froglife has remained an active member of Scottish Environment LINK, and the CEO continues as a trustee of the network. We sit on various working groups contributing comments on numerous Scottish government consultations. We have continued to be supported by Scottish MSPs as Nature Champions (Martin Whitfield MSP supporting the adder; Emma Harper MSP supporting natterjack toad, ponds & small lochs; Fulton McGregor MSP supporting great crested newt; Daniel Johnson MSP supporting slow-worm and Murdo Fraser MSP support palmate newt). Our CEO is a Scottish Environment Link Trustee.

Froglife co-operates and works in partnership with a wide range of organisations and charities including those working within the nature conservation sectors and from the wider charitable sector. Froglife works closely with landowners and land managers, local and central councils, schools, colleges, universities, and corporate partners.

We have remained Evidence Champions for Conservation Evidence and sit on the Conservation Evidence working group. We are a member of Cambridge Conservation Forum representing conservation organisations worldwide.

We have remained a crucial partner in the Garden Wildlife Health Forum and have contributed actively through promoting the project, reporting amphibian disease/mortality reports through our INFO service and social media, collaborated on scientific publications, and have attended regular partnership meetings.

As part of our partnership with the South Downs National Park Trust we sit on the grants panel to award grants to South Downs National Parks reserve staff for the creation and restoration of freshwater habitats.

We sit on various fundraising, business support, woman leadership, corporate and other groups all of which help to inform our operations and raise the profile of the charity. Our Head of Operations is a Trustee of the National Association of Environmental Education and a mentor for young women in sustainability through the Catalyse Change programme.

TABLE 1: GLOBAL STATISTICS

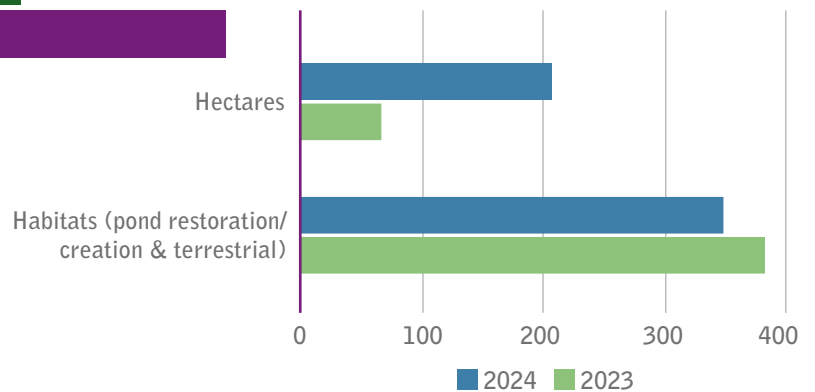
Category	2021/22	2022/23	2023/24
Habitats	222	381	110
Hectares	69	66	207
Volunteers	589	394	788
Hours	2,554	2,803	3,254
Sessions	1,000	901	892
People	78,487	65,217	64,662

TRANSFORMING LANDSCAPES

Transforming Landscapes 2023 - 2024



Transforming Landscapes: comparing 2023 & 2024



How we did delivering our key indicators

We have continued with our successful habitat creation and restoration programme, and this year we have created and restored 381 freshwater and terrestrial habitats, covering 206.562453 hectares. This compares to 222 in 2022/23 covering 66 hectares.

Hampton Nature Reserve



This year we continued to improve habitat at Hampton Nature Reserve for great crested newts, grass snakes, adders, and bearded stonewort. In the lead up to the reptile survey season the reserve team replaced 200 carpet and tin tiles. They restored 6 ponds and cut scallops for amphibian surveys in 32 ponds. This work has been undertaken by our Reserve Warden, a team of trainees and a dedicated volunteer group (total of 18 volunteers). We hosted 2 Young Rangers training sessions on the reserve in partnership with Nene Park Trust.



Boardwalks & Eye Green Nature Reserves

We have continued with the management

of Boardwalks and Eye Green Nature Reserves. This year we have undertaken a wide range of habitat improvements at both reserves. The focus this year for Boardwalks has been maintaining the three ponds created in previous years and erecting dead hedges to prevent dog disturbance. Great Crested Newts have been surveyed in some of the ponds. Path maintenance has also been an ongoing task.

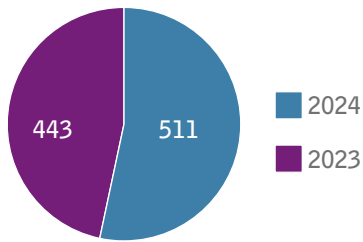
Eye Green Nature Reserve experiences a high level of anti-social behaviour which is a constant challenge for the reserve team. We are working with a local arts organisation with a presence in the area, Peterborough Presents, to raise awareness of the animals that live on the reserve and why responsible behaviour is important to retain the integrity of the reserve. The team have undertaken considerable path clearance to encourage visitors to stick to the paths and not to access wildlife areas.



Toads on Roads

The toad migration season took place in early spring. Thanks to toad managers and their patrollers 131,505 toads were rescued from road mortality and safely helped to their breeding ponds. We continued to register new patrols and this year we have had a

Number of toad patrols



record number of new patrols registered (71), now standing at 511, this represents over a 16% increase in toad patrols.

An article on toad patrols in BBC Wildlife magazine and

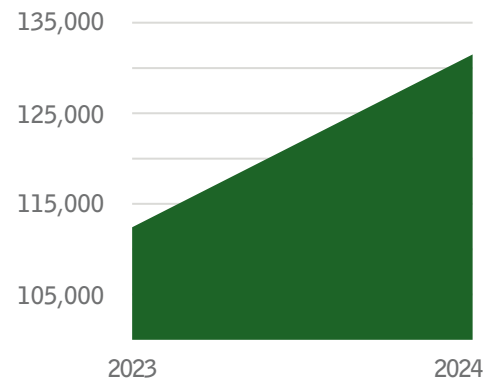
a press release about a local toad patrol generated a huge amount of press interest including, BBC TV News bulletins, BBC Radio 2, BBC Radio 4, BBC Radio 5, Sky TV, and we were quoted in 30 regional papers. Although we are very appreciative of the press coverage received, it did create a lot of additional work for our Toads on Roads Co-ordinator, who worked tirelessly on supporting the various requests that came through the INFO service and social media.

Our Discovering Dewponds project hosted its third and final TOAD Summit in Sussex. This was an in-person event, with a great turnout, several visitors to the site popped in to see what was going on and stayed for the duration of the summit providing us with an excellent opportunity to promote Toads on Roads to new, unsuspecting audiences.

We have continued to promote our new online Toads on Roads reporting portal; however, some toad patrol managers are not comfortable using an online system and we still receive paper copies, which we enter onto the portal on their behalf. This has meant that the reduction in staff time spent on paperwork has not been as great as we had initially thought.

We have entered the second year of the RS MacDonald Foundation funding, part of which is towards supporting Toads on Roads in Scotland.

Number of toads rescued



“Thanks for all the amazing work you do supporting us all, I’m so grateful to have your help and support.”

“You’ve been amazing / and we can’t thank you enough for what you do on a national level for our amphibians. It’s been such a wonderful thing to do. Our volunteers have got so much from this which have extended far more to saving toads / our number one goal of course – but making new friends, being active, enjoying dark skies and being connected with wildlife – we’re all quite emotional it’s finishing but we will all be involved and raring to go for next migration. Is there anything the volunteers could be doing over the summer?”

“I really enjoy helping and seeing wildlife and getting other people involved, who have also introduced so many new patrollers! It’s also great we have residents of Hensting Lane involved, some who have children helping so hope this can continue and who knows, they can pass it on to their friends and maybe if they have children in the future. Megan McCubbin is also interested in filming so that

would be great if she can spread the word too.”

“I just thought I’d let you and Froglife know of a very positive experience I’ve just had with East Sussex Highways. For the second time, and in time for the 2024 toad migration season, ESH have installed two permanent collapsible toad crossing signs in Hammer Lane, Cowbeech for one of our crossings at Forge Meadow (no.1014.)

Brilliant work by the local authority.”

“I learnt so much from the live videos with yourself and Andrew, you’ve pretty much made me into the Essex Wildlife Trust toad expert! This was my first ever radio interview, so you’ll have to forgive me for calling the project ‘Roads on Toads’ but I mentioned Froglife’s amazing work and asked for people to let you know about potential toad crossings in Essex. If anyone gets in touch with us about them, I will be sure to contact you.”

Toads on Roads patrollers feedback

Discovering Dewponds



The project completed all the habitat works early in the project which has provided us with excellent opportunities to monitor and survey this work. This project will complete in November 2024, and the team have spent the final year focusing on training volunteer groups in amphibian and reptile identification and survey techniques, alongside doing surveys of the dewponds restored during the project.

The training of the volunteers, particularly Sussex Amphibian & Reptile Group (ARG), will provide a dedicated and trained group of volunteers to continue with Froglife's commitment to revisit all ponds 1, 3, 5-, & 10-years post works and they will provide Froglife with the pond status data.



Transforming Lives: Trainees

Our second cohort of trainees completed their training earlier this year. We recruited the next and final group of trainees in April 2024. We are very pleased with the huge amount of habitat improvements that the second group of trainees undertook on the three reserves managed by Froglife in Peterborough, such as assisting an Ecologist with Stonewort surveying, laying 200 reptile tiles, and undertaking monitoring, creating a basking bank at a community garden, doing amphibian surveys on the reserves and undertaking pond clearance and scrub management in preparation for the training and survey season. Additionally, they did great crested newt training, and obtained the two required references alongside other courses of their preference.

Year 3 trainees started in April 2024 and have already completed reptile surveying, butterfly surveying and amphibian identification training alongside doing species surveying and attending a Great Crested Newt Obtaining a License course. They have been working on a wildflower meadow creation at Eye Green Nature Reserve and creating a Habitat Management Plan for an area of Hampton Nature Reserve and will then implement the plan.

London Blue Chain

London Blue Chain was successful with its National Lottery Heritage Fund and Natural England Species Recovery grant applications. This grant funding alongside an extremely generous donation from a Froglife supporter, means the project is fully funded, and well underway. The project will be creating a London Blue Chain along the historic London Green Chain walking route. The Blue Chain will both connect a corridor of freshwater habitats and local communities to their natural heritage. The project will create 100 blue chain ponds, including 85 community ponds, created by local people. We will create Neighbourhood Wildlife Corridors with a total of 60 other interventions.

Large scale habitat works are underway with completed works at two sites, within six weeks of completion smooth newts were recorded at both sites.

Coalface to Wildspace Midlands

We have completed the WMCA Community Green Grants funded elements of the project which included improving freshwater habitats at Reedswood Park and contributed towards the creation of 8 Neighbourhood Wildlife Corridors. Within these corridors a total of 8 new ponds have been created, alongside many other nature friendly interventions. The project has teamed up with Birmingham and Black Country Amphibian and Reptile group (ARG) to survey ponds created through the project. The project will complete in 2025. As an additional outcome from the project, FES has secured a contract to restore a pond in Walsall.



The Green Pathways Scheme (London, Somerset, Peterborough & Fenlands, Scotland)

The Green PATHways Scheme has also contributed to our Transforming Landscapes programme. This year these projects, with their project participants, have created and restored 79 habitats. These include freshwater and terrestrial improvements. This work



has been undertaken on local allotments, green spaces, parks, schools, housing association green spaces and community gardens.

Our volunteer training programme and working with other organisations such as The Conservation Volunteers (TCV) Scotland, ARG Sussex, Birmingham and Black Country ARG and ARG London is central to ensuring that our work is sustainable. This is further supported by Froglife's commitment to re-visit all sites that we have worked on 1,3,5 & 10 years post works.



The key donor for our Transforming Landscapes work is the National Lottery Heritage Fund and we are enormously grateful to lottery players for supporting this valuable work. We are also grateful to the many other donors that support this work, a total of 24 donors have contributed funds to ensure that we can deliver for biodiversity and for reptile and amphibian conservation. It goes without saying that without this support we would not be reporting on yet another very impactful year.



TRANSFORMING LIVES

How we did delivering our Key Indicators

We are reliant on the volunteers and placements that help support our work, these include those that help on sites, in the back office, help at events, write blogs and articles, analyse our data, and support our work in a hybrid of other ways. We are also reliant on the Toads on Road patrols that go out each spring evening to help save thousands of toads. A huge thank you to every volunteer. Volunteering provides us with much needed additional support which enables us to deliver more on lower budgets. This is a huge financial gain for Froglife.

This year we have worked directly with 64,662 people, delivering 892 sessions and workshops, and representing Froglife at 110 events. These are events either organised by Froglife or large-scale events organised by others. Our teams have been out and about giving presentations to a wide range of diverse community groups and have delivered two lectures with students at Bridgend College.

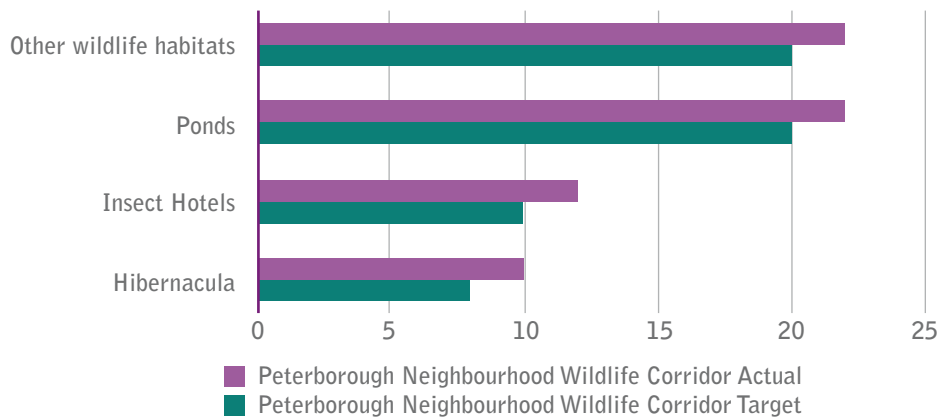
TABLE 2: TRANSFORMING LIVES	
Number of people benefiting	64,662
Sessions	892
Events	110
Scientific publications	4

Green Pathways Scheme (working with vulnerable and/or disadvantaged young people and people living with dementia, currently these projects are operating in London – Leaping Forward for Dementia; Somerset Green Pathways for Life, Peterborough, and Fenlands – Green Pathways Scheme and various regions of Scotland – Green Pathways Scheme) this year the scheme have directly engaged with 7,189 with 84.75% of those attending sessions and workshops reporting themselves as disadvantaged.

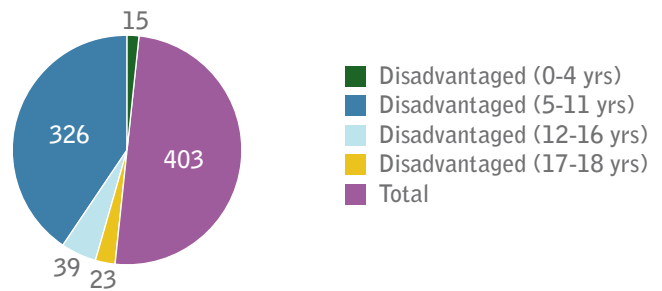
In Peterborough we worked with disadvantaged young people to create a Neighbourhood Wildlife Corridor through the city. The project has worked with 24 local organisations, delivering 171 sessions to 338 disadvantaged young people. In addition, 22 one off

events or visits has taken place, at which 501 young people attended and took part. The achievements by the young people are outstanding as highlighted in the graph below.

Peterborough Neighbourhood Wildlife Corridor



Peterborough Neighbourhood Wildlife Corridors Participant Breakdown



Scottish Green Pathways has delivered 196 sessions and have attended 13 events at a range of venues including parks, botanical gardens, and community gardens. The project has kept young people occupied and engaged over the summer holidays delivering sessions at Tayport in Fife creating a new pond, delivering one off sessions with young people at the FUSE Summer club in Shettleston and a pond creation project with SIMY at the Sculpture Studios in Glasgow. Highlights of the project for this year have included night-time torching surveys and finding 67 palmate newts and restoring a pond at Victoria Community Gardens in Dundee.

"I liked learning about Amphibians most. I told my sister frogs have a patch behind their eye, that's where their ears are."

"I found out new things every time, like a slow worm is a legless lizard."

"I have learnt lots of facts, my favourite fact is that a lizard will drop its tail if it's attacked."

"I really enjoyed learning about all the animals. Did you know? A baby frog is called a froglet."

"I know all about habitats now. We made toad abodes, bird houses and a hibernaculum."

"After Froglife I tell my friends and family what I have learnt about animals. I have more friends now because they want to know too."

"I can work in a team, remember when we worked together to build the pond. It was hard to dig but we did it together."

"I got to use tools for the first time. I was not very good at the start but now I can do it without any help."

Feedback from young people attending Green Pathways sessions.

Our Somerset Green Pathways for Life has secured a five-year grant from the National Lottery Community Fund, this grant has stabilised the future of this project which is now fully funded for the next five years. Highlights for the year include a new pond at a community garden, working in partnership with Heal at their flagship site close to Frome and participating in local networking groups including Green Social Prescribing, Frome Medical Practice and Somerset Dementia Partnership.

The London Leaping Forward for Dementia project is in discussions with the Alzheimer's Society to deliver workshops for their clients. The sessions delivered to over 55s struggling with social isolation and other physical and mental health conditions have explored wildlife gardening, amphibian life cycles, pond maintenance, bird call identification, plant identification and much more. We have worked with Homeinstead to deliver sessions for people living with dementia, sessions have covered topics on species identification and bird nesting behaviour. Across the session delivery sites the participants have been able to enjoy seeing common frogs, common toads, and smooth newts, whilst the Wild Times groups have helped with tadpole development through marginal planting, educational signs deterring disturbance and regular pond surveys.

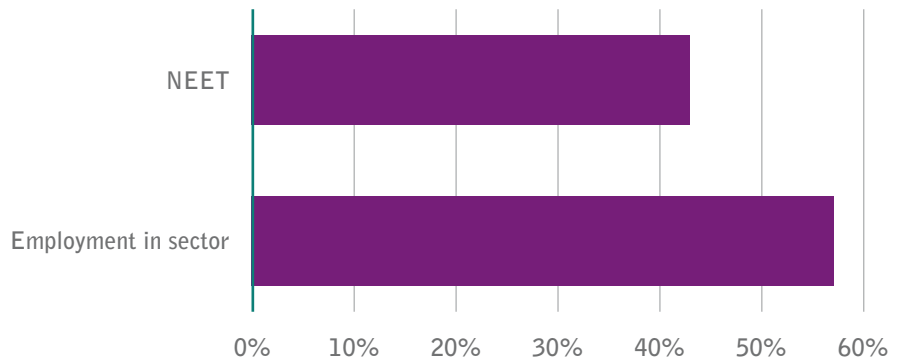


Froglife Trainees we have continued with our strategy to employ salaried trainee placements in most of our projects. This year we have had the pleasure of working with 14 highly motivated and dedicated trainees, not only have the trainees benefitted enormously through developing both habitat and public engagement skills, but Froglife has also benefited by having such a lovely cohort of trainees, some having gone on to further employment in the sector.

“I wanted to say a big thank you for the last year here at Froglife – I’ve really appreciated the support that Froglife have offered, and it’s been a joy to work for such a fantastic and friendly organisation. I just thought I would drop you an email to let you know how valuable this traineeship has been for me personally.” **Froglife Trainee**

Discovering Dewponds this project ends in November 2024. This final year has had a high level of activity delivery, particularly volunteer sessions, and surveying. In this final year the project has directly reached 3,106 people through 88 sessions/workshops and either organising or attending 9 large-scale outdoor events. The project’s second trainee successfully completed their traineeship, see case study.

Trainee Progression



Trainees



Stanmer Park Session – Case Study

Ahead of Earth Day, my daughter and I spent the weekend learning all about frogs, toads, and newts with the amazing Froglife staff member. It was really interesting and utterly charming.

Apart from being a beautiful father-daughter bonding experience, we learnt a lot about our endangered

amphibians. Following a three-hour theory session, On Sunday we dug a big hole and created a hibernaculum next to one of the dew ponds.

We finished the day by planting some important wild plants in the pond margins. Supporting in this way felt rewarding and meaningful. Thanks, Froglife and thanks to the local Ranger.



Trainee Case Study

I want to say a big thank you for the last year here at Froglife – I have really appreciated the support that Froglife has offered, and it's been a joy to work for such a fantastic and friendly organisation.

I thought I would drop you an email to let you know how valuable this training has been for me personally.

Before applying for the traineeship, I was feeling 'stuck' and didn't have a great amount of hope about my future. I was unsure which direction to go in and didn't feel that I had many options available to me. I had been through some difficult things in my personal life and with my health, which led to gaps in my employment record, and my experience felt like it was becoming less and less relevant to where I wanted to be in life. I was work two part-time jobs and throwing myself into volunteering whenever I could outside

of work, but a career in conservation never felt like it was attainable. So many organisations have such high barriers – requiring things like a degree or several years' experience or a car – which for various reasons I didn't have couldn't afford.

The traineeship has given me much-needed confidence in myself – I always knew that I was enthusiastic and capable but in a world that values professional experience above all else, and which seemed to always favour people from particular backgrounds, I was never given the opportunity to prove it. It was very demoralising to not be able to use or show those skills even though I knew I had a lot of potential. To see that potential recognised and to be given the opportunity to develop my skills and knowledge and grow both personally and professionally has been wonderful. The traineeship has been truly life-changing for me.

Transforming Lives: Trainees all the trainees recruited into these positions are people with an interest in wildlife conservation but have not had the opportunity to further their interest through study or employment. This project provides people with an opportunity to gain valuable practical habitat expertise which is transferable to other organisations within the nature conservation sector.



Transforming Lives: Trainee Feedback

What were the main things that worked well for you?

- All of it! Loved being on site a lot.
- Really enjoyed working on a reserve and developing my presentation and management skills.
- Meeting new people has increased my confidence.
- Enjoyed working with other trainees.
- I have learnt so much.
- Lovely supportive environment.

What were your main achievements while you were at Froglife?

- Learnt a lot, ran events and community days and managed volunteers.
- Became more resilient and self-confident.
- Working with other people reduced my anxiety.
- I know believe I can do the job.
- Improved planning and running events.
- Finding out I had it in me to be an outdoorsy person.

What are your views on Froglife as an organisation?
How would you describe the culture?

- Friendly and open.
- Nice place to work.
- Exceeded my expectations.
- Appreciated the opportunity, recommended Traineeship to a friend.
- The friendliest place I have ever worked.



London Blue Chain incorporates a large public engagement programme. The chain travels through Bexley, Greenwich, Lewisham, Bromley, Southwark, and Lambeth. These six boroughs have the highest ethnic diversity in London and are areas that experience some of the highest levels of deprivation in the country. The London Blue Chain will ‘link’ these communities to their local natural heritage, providing people in most need to benefit from training and learning, conservation volunteering, creative expression, and the physical and mental wellbeing impacts of nature connectedness. In total a minimum of 34,135 people will directly engage with the project, through a wide range of activities designed to appeal to all audiences.

The project had a high-profile launch in January 2024 since NLHF chose the project as the lead story for their press release. Kate Bradbury (Froglife Patron) and Xavier Mahele (Froglife Trustee) joined staff for the photocall. There was a high level of media coverage including the Daily Star, Local London papers, BBC Radio London, and lots of social media.

“We have extensive grounds that we don’t do an awful lot with now so in terms of conservation, we have the scope to do a lot. We would love to have you to visit whenever you are next able to. The session was great, and the pupils really seemed to get a lot out of it which was fantastic.” **Harris Academy Greenwich**





The ladies who came yesterday were WONDERFUL! So knowledgeable and helpful plus they were fantastic with our children too



Coalface to Wildspace Midlands funded by National Lottery Heritage Fund the project is largely a community engagement project focusing on working with local communities on creating Neighbourhood Wildlife Corridors and an extensive community engagement programme. To date the project has developed a 3D Digital Film showing the geology of the region over millennium and the evolution of amphibians and reptiles over 400 million years, screenings are currently taking place in a wide range of venues and at schools. To date 27,765 people have viewed the film. Working with local community groups we have created 8 'Speaking Wildlife Statues' with QR codes explaining their purpose and benefits to wildlife, these have been informed by 435 people attending 32 workshops and have been installed at various sites. The Lego displays have now been completed and are on tour at libraries in Walsall, culminating in a final event alongside judging at the Walsall Arboretum. The project has also completed the public engagement elements funded by WMCA, delivering 12 Amphibian Hop sessions engaging with 305 pupils and delivered 15 wildlife gardening workshops engaging with 369 individuals. An additional two wildlife corridors were completed with 2 new ponds. Two successful tree planting days were hosted, with 39 volunteers planting 800 trees. Radio West Midlands interviewed the team to promote these days.

The project has delivered 40 wildlife gardening workshops engaging 754 people exceeding the target of 600.



Balfour School, Brighton – Case Study (Letter to National Lottery Heritage Fund)

I am writing to you on behalf of the 674 children and 130 staff at Balfour Primary School. We would like to thank you very much for supporting the Discovering Dewponds 'Neighbourhood Wildlife Corridor' project. The pond that Froglife recently built for us at Balfour through the scheme has already had a massive impact on our local flora and fauna. This in turn, has had an impact on the learning and experience available to our children, our staff as well as the wider school community.

Please find below comments from some of the children and our headteacher.

"Seeing nature that we have been learning about in real life helps us understand it more" **11 year old**

"When its sunny, you can see the blue and green flies (damsels) – they look really beautiful, and it makes me smile." **6-year-old**

"The pond and the reptile area (hibernacula) are good because they are making many more homes for so many more thing, when I see it I remember." **10-year-old**

"Its so exciting to see the increase in different wildlife already, especially the newts." **11-year-old**

"Froglife have made our Nature Area even more special, that pond is so cool I have never seen newts, pond skaters and spiders that run across the water before." **9-year-old**

"To Froglife, thank you so much for transforming our nature area with your pond. Our plans for the pond would not have happened this year without the support of the Froglife team. What has blown us away, is the amount of life already teeming in the waters. We are now able to offer such a diverse experience for our children; they are learning so much and creating many lasting memories. Your team were wonderful – please come back and see us and the magic you have created." **Headteacher**

Finally, as part of our Nature School provision, I would personally like to say how impressed we have been with the Froglife team; their professionalism, their knowledge, and the way they share that knowledge with everyone involved. Thanks, Froglife.

Eco co-ordinator/ Nature School Leader.



TRANSFORMING RESEARCH

During the past year Froglife staff have contributed towards the following publications:

Gardner et al (Tse-Leon, J. and Mawby A. are co-authors) 2024. A family of process-based models to simulate landscape use by multiple taxa. *Landscape Ecology*, 39(5), pp. 1-26.

Tse-Leon, J. (2024) Protecting Britain's wildlife laws: the need for vigilance, a sage for our times *The Glasgow Naturalist* Volume 28, Part 2 (online) <https://doi.org/10.37208/tgn28220>.

Wormald, K. (2024) The Come Forth for Wildlife and Fife Living Water Projects *The Glasgow Naturalist* Volume 28, Part 2 (online) <https://doi.org/10.37208/tgn28220>.

Paper using Froglife input as part of data collection:

Foster-Collins, H., Calitri, R., Tarrant, M., Orr, N., Whear R. and Lamont, R.A., 2024 'I can still swing a spade': a qualitative exploratory study of gardening groups for living with dementia. *Ageing & Society*, pp. 1-27.

We presented online at the Zoological Society of

London Garden Wildlife Health meeting regarding amphibian and reptile disease records and mass mortality events.

Our Dragon Finder data up to 2024 has been submitted to the National Biodiversity Network (NBN), this data helps to inform our work and the conservation work being carried out by other organisations.

A series of briefings have been produced and we will continue to produce these as required. To date we have published briefings on amphibians and pollution and ponds and carbon.

In collaboration with the Beaver Trust, we have drafted a funding proposal to look at reptile and amphibian survey information at sites before and after beaver introductions.

The five-year Gartcosh Tunnel Monitoring has ended, however our Vice Chair working with a PhD student is reviewing the data to write a paper covering the five-years with conclusions.



TRANSFORMING COMMUNICATIONS

We have had some very good media coverage in the national and local press and through our social media channels.

We have ensured that our website is regularly reviewed and kept fresh with new content. Our social media following continues to climb, particularly through Froglife's use of new platforms.

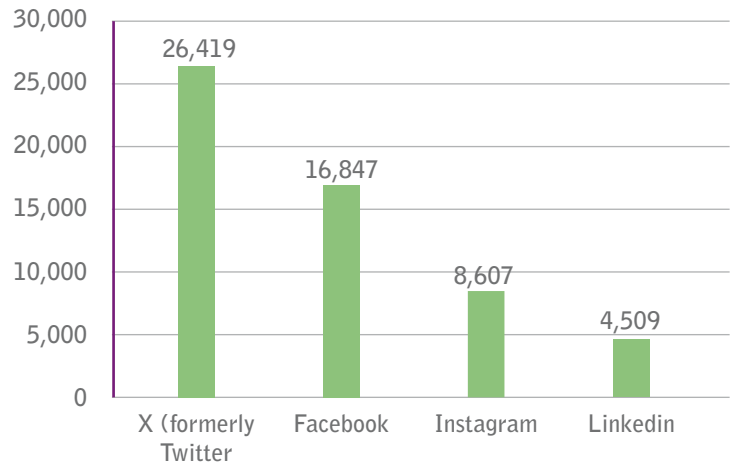
The email enquiry service has seen a fall back in enquirers; however, this is attributed to more social media enquiries.

"Thank you for such a quick and full response. I am very impressed with Froglife."

"Thank you so much! fab advice. all taken in! I think this year our frogs came to spawn a lot earlier than usual. on a hot weekend. We may turn to home-raising next year, and good news is, we have discovered a few surviving taddies! hidden in the pond mud."

We have received a lot of positive comments about our monthly e-newsletter and bi-annual newsletter,

Social Media Followers



we are very pleased that our supporters value this communication, and we continue to cover what is of interest to them.

This year Froglife staff attended the Restore Nature Now demonstration in London.

We have run several campaigns during the year including 'Stop Spawn Sales', 'Paws Against Ponds' and





‘Just Add Water.

This year we awarded Newt Year Honours again, with many people over the moon at receiving an honour:

“I’m really pleased to be given this award. I’ve got a busy year ahead of me working with and studying Kent’s great crested newts, and I hope to convince many people along the way of the value and charm of all the UK’s amphibians and reptiles.” **John Rowland**

“I’d like to thank everyone that nominated me for the Newt Years Honours, I am humbled by the recognition of my work trying to conserve the species that I am passionate about. It is reassuring to know that my dedication (and obsession) is paying off.” **Steve Allain**

Finally, we would like to acknowledge the valuable work of all our trustees, volunteers, and staff. We particularly want to thank the back-office staff, they are predominantly out of sight, but without their ongoing work dealing with administration, financial matters, human resources, and communications we would certainly not have had the enormous achievement we have enjoyed this year. The CEO

would also like to extend a huge thanks to the Senior Management Team who through their ongoing management of projects and their constant fundraising have ensured that we continue with our efforts to conserve our native reptiles, amphibians, and their habitats.

“Having read the pdf from your Vice Chair of Trustees, Prof. Downie, the emphasis on the lack of research on amphibians resonated with me and emphasises my wish to work with your organisation. I truly understand the gravity of this role and the knock-on effects it will have on the amphibians and local communities – I need a role where I will be able to contribute and make a difference.”

Job Applicant

“This is Campy Growers. We have a volunteer really interested in building a pond in October and we are looking for information and material to do so. Many volunteers seem interested, and we would like to bring an educational side of it to the activity (type of material, type of plants, location etc. ...). Is that something you could support us with?”

Follow up post Come Forth for Wildlife – Wildlife Gardening Workshop.



TRANSFORMING FROGLIFE ECOLOGICAL SERVICES (FES)



FES, through delivering paid-for ecological contracts and Great Crested Newt Obtaining a License, reptile, and habitat management courses, provides invaluable unrestricted funding for the charity. All profits made by FES are gift-aided to the charity.

FES has continued to grow its training programme and this year saw the delivery of more training courses, in more regions, training more ecologists. The feedback from these courses is very encouraging.

FES secured a sizeable contract through Natural England's District Level Licensing Scheme and became the delivery partner for Essex. Working in partnership with many landowners and managers year 1 of the scheme saw FES create 36 new ponds in Essex. We have subsequently been asked to assist with the delivery of 10 pond creations in Leicestershire. Over the next year we will be creating a further 40 ponds in Essex.

FES has also been the contractor to deliver ecological works through our projects, the largest one this year has been the London Blue Chain, where FES will by end March 2025 have delivered 10 large scale freshwater and terrestrial habitat projects. This element of the project is funded by Natural England's Species Recovery Fund.

"James is always a pleasure to work with on these projects." **Contractor**



"Many thanks for completing the many ponds on the farm, a real asset to the farm environment! I had a walk round at Bailey Hill yesterday and pleased to say

they are filling up nicely now and we look forward to watching them long term." **Unwin Estates Ltd, District Level Licensing**

 **Conner McCall** (He/Him) · 3rd+ Ecology & Environmental Biology MRes graduate ... 8h · 🌐

This week I took part in the **Froglife** 'Great Crested Newt: Working Towards a Licence' training course in York.

During this course, I took part in surveying for great crested newts via refugia and egg searching, torching and bottle trapping. This course has helped develop my skills in these survey methodologies and provided great insight into newt ecology.

I thoroughly enjoyed this course and look forward to further developing these skills as I work towards gaining a level 1 great crested newt survey licence.



Our Operations Manager for Froglife Ecological Services, James, has carried out his first great crested newt licensing course of the season.

Participants got to take part in bottle trapping, egg searching and torching at Hampton Nature Reserve and found ponds teeming with GCN!

O&H #FES





TRANSFORMING OUR FUTURE

Our 2023 – 2030 Strategy has identified the following Aims and Targets:



aim 1 Increase the availability of freshwater and terrestrial habitats for reptiles and amphibians.

target Increase total area of habitat improvements to 5,000 ha by 2025 and 10,000 ha by 2030.

aim 2 Carry out landscape scale conservation projects.

target Deliver 5 large scale landscape scale conservation projects by 2030.

aim 3 Improve connectivity between sites by creating wildlife corridors.

target Create 2 wildlife corridors between key habitats by 2030 and 20 Neighbourhood Wildlife Corridors by 2030.

aim 4 Maintain favourable status at Froglife managed reserves and project sites.

target Publish favourable evaluation report of condition monitoring at Froglife reserves and 1,3-,5-, and 10-year site assessments of project sites by 2030.



aim 1 Ensure Froglife is fully inclusive and has good representation from all backgrounds.

target Equality statistics of staff, volunteers and participants reflect those for the UK population by 2030.

aim 2 Expand Froglife’s reach particularly focusing on people who are new to conservation and from areas of multiple deprivation.

target Engage over 50,000 people annually with Froglife activities by 2030, mainly from areas of multiple deprivation across the UK.

aim 3 Progress people on their wildlife journey.

target 90% of people that take part in Froglife activities (and provide evaluation data) report they have progressed in at least one area of the Froglife curriculum.

Our plans to help us deliver the strategy:

We have reviewed year one of the strategy and although mostly on target we have put in place an action plan for a couple of targets that need additional attention. We will be annually reviewing our delivery against the strategic targets to ensure that we remain focused on delivering against our commitment.

Coalface to Wildspace Scotland we have secured a grant from NLHF to develop a new project in Scotland. It will be an eight-month development phase focusing on Ayrshire, South Lanarkshire, and the Lothians. The development phase will work up Habitat Action Plans for landscape scale habitat works creating and restoring 79 freshwater habitats alongside improving 24 terrestrial habitats. The development phase will develop plans for creating 9 NWC; creating a wildlife themed Mapestry; delivering WGW; building nature trails with Speaking Statues; a natural arts tour with

aim 1 Provide evidence for population trends for the 9 “common” UK amphibians and reptiles.

target Carry out historic data review by 2025 and increase quantity of data collected by 50% by 2030.

aim 2 Carry out applied research into the impacts of different conservation actions.

target Meet our commitment in the “routine testing of management” paper to test one intervention per year by 2025 and exceed this by 2030.

aim 3 Act as the public portal for amphibian and reptile disease mortality reports.

target Actively engage and support the national Garden Wildlife Health project.

the mapestry and lego displays; Augmented Reality; a 3D film; amphibian and reptile focused dance, sound and movement sessions with children/young people, and training Nature Guardians.

Coalface to Wildspace Yorkshire we have a pending funding application with NLHF for a development phase of a new Yorkshire project. During the development phase we will identify 60 habitats in 15 areas of high deprivation. The project will be working with Barnsley Metropolitan Borough Council, The Trust for Conservation Volunteers (TCV), Kirklees Council, Sheffield City Council, Wakefield MDC, Rotherham Council and Selby Council. Other outcomes include 5 dipping platforms, training 600 guardians, 5 NWC with 255 interventions, 100 WGW, Wildlife Parades with schools, installing 5 Speaking Wildlife Statues and hosting 10 Natural Heritage Festivals.

Cymraeg Gymdogaeth Bywyd Gwyllt Corridor - Welsh Neighbourhood Wildlife Corridors we have a pending funding application with NLHF for a NWC in the Bridgend region of Wales. The corridor will run through Bridgend working with communities to create a blue and green corridor. The project will recruit two trainees during the three-year duration of the project. It will include a range of public engagement activities including a 3D film tracing how the geological changes over millennia with the region has informed the evolution of reptile and amphibian species. We will be working with ARG Swansea to set up an ARG Bridgend group to help support the project both during and post-delivery.

Lincolnshire Living Water we are in the process of liaising with stakeholders to develop a new Living Waters project in Lincolnshire. The project will combine habitat improvements alongside public

engagement and will focus on blow-wells and best practice for ensuring that they deliver for wildlife.

Consolidating and expanding our existing projects we will continue to consolidate our Transforming Lives programme within areas that the Green Pathways Scheme and Leaping forward for Dementia are currently operating. This will ensure longevity for these projects. We will continue to expand the Green Pathways Scheme and Leaping Forward for Dementia into new areas, this will ensure that the projects are benefiting new audiences and nature areas. We will further develop our Transforming Lives Trainee programme on the nature reserves that we manage, and secure funding to continue with the programme post the current project end date of April 2024. We will continue to expand our landscape scale habitat works within areas that we have delivered in and new areas where we have identified a need.

RISK MANAGEMENT AND INTERNAL CONTROLS

The board of trustees have overall responsibility for the system of internal controls for Froglife and its subsidiary which include ensuring that there are procedures in place for the prevention and detection of fraud and other irregularities. However, such a system can only provide reasonable, but not absolute assurance against errors and fraud.

The charity operates a comprehensive annual planning and budgeting process, which is approved by the board. Performance is monitored using activity and financial targets. Reports are made to the board which compare the actual results against activity targets and against phased budgets which link to financial performance with resource and activity levels.

Internal controls are subject to scrutiny by the charity's Senior Management Team and the Finance Team which carry out a programme of cyclical reviews.

The charity has risk management policies and procedures through which risks arising from existing operations and strategic developments are identified and evaluated. Managers are required to identify and analyse the risk relevant to their scope of activity, assess them accordingly to the impact on the charity and the likelihood of occurrence; and report of the procedures which are in place, or are being developed or enhanced, to provide assurance that the risk is being monitored.



The Risk Register as at September 2022:

Risk	Level	Actions	Revised Level
Human Resources			
Loss of key staff	Low	Excellent HR processes & procedures are in place; all staff are well supported; good benefits package.	Low
Stress Management	Low	Excellent HR processes & procedures are in place; all staff are well supported; good benefits package.	Low
Mental Health & Wellbeing	Low	Monitored on an ongoing basis through line management meetings; staff reporting wellbeing issues are signposted to relevant support.	Low
Equality, Diversity & Inclusion (EDI)	Low	Ongoing monitoring & staff EDI group to advise.	Low
Long-term illness	Low	None to date	Low
Financial Management			
Unrestricted funding	Medium	Core funding always difficult - expanding core income generation.	Medium
Cashflow	Medium	Expanded operations = healthy cash flow	Low
Under-funded projects	Medium		High
Accountancy procedures	Low	Good procedures & processes in place	Low
Trustees			
Loss of Chair/Vice Chair	Low	Contingency in place.	Low
Professional Services			
Accountants, Solicitors etc	Low	Good relationships in place. Understand the organisation.	Low
Consultants	Low		Low
Contractors	Low	Seasonally adjusted.	Medium

Risk	Level	Actions	Revised Level
Reputational Damage			
Inappropriate behaviour by trustees/staff/volunteers	Low	Required behaviour clearly set-out in procedures.	Low
Carbon Footprint	Medium	Work in progress	Medium
Green Policy	Medium	Work in progress.	Medium
Sites			
HNR, Eye & Boardwalks Financial/ Reputation/Long-term	High	Financial & long-term remain a medium risk.	Medium
Reputational risk associated with not managing the reserve	High	High risk due to financial constraints/lack of adequate funding.	High
Projects		Projects covered by Project Risk Assessments	
Events		Covered by Events Risk Assessments	
Press			
Incorrect/ Misrepresentation/ incredible stories etc	Low	Difficult to manage what the press will print/say.	Medium
Social Media			
Ensure that social media posts are monitored and are accurate	Medium	Alol posts are carefully monitored	Low
Website			
Inappropriate info/ sabotage etc	Medium	Regularly reviewed.	Low
IT Security			
IT Consultant	Medium	Developed in a way that will be relatively easy for someone else to pick it up.	Low

Risk	Level	Actions	Revised Level
Data protection: Server/Cloud etc	Low	Monitored.	Low
Email: Inappropriate/incorrect/poorly phrased etc	Low	Email conduct in place.	Low
Social Media: Inappropriate/incorrect/poorly phrased etc	Low	Monitored on an ongoing basis.	Low
Social Media: hacking & cyber attacks	Medium	Monitored but difficult to stop.	Medium
Publications			
Mistakes/incorrect etc	Low	All are carefully checked.	Low
Fundraising			
Fundraising Standards & guidance	Low	Monitored and proof read.	Low
Inappropriate funding	Low		Low
Charity Commission			
Failure to report any major issues	Low	No issues to report, would report if needed to.	Low
Froglife Ecological Services (FES)			
Training courses	Medium	Well structure course in place & delivered by professional staff.	Low
Financial	Low	Healthy contract schedule.	Low

FINANCIAL REVIEW

The financial statements include the results of both The Froglife Trust and its trading subsidiary Froglife Ltd t/a Froglife Ecological Services (FES) for the 12-month period ending 30th September 2024.

Significant events that have affected the financial performance and the financial position of Froglife during the period are:

Froglife has a diverse range of income streams and enjoys the support of a wide range of grant making organisations. Most of this funding is for direct project delivery, however we are very appreciative of the unrestricted grants that we receive from the Esmeé Fairbairn Foundation and People Postcode Animal Lottery and to donors who provide Full Cost Recovery elements in their grants. Froglife is very reliant on FES to provide unrestricted funds in the form of gift-aided profits to the charity. These funds help to support the core functions of the charity.

Our largest donor has continued to be the National Lottery Heritage Fund (NLHF). This year thanks to NLHF lottery players and Natural England we have started our London Blue Chain project.

Obtaining grants from grant making foundations and trusts has remained incredibly competitive, with donors requiring a much higher level of evidence of impact and long-term sustainability of projects/ organisations. The requirements for increased supporting evidence and other documentation to be submitted with grant applications does put an enormous strain on staff capacity to meet these requirements. Likewise, donor reporting has become a lot more demanding and complex putting further strain on project and financial staff capacity.

We have witnessed a huge increase in the demands on our Human Resources capacity, this is largely around work required on Diversity, Equality, and Inclusion (DEI) and gathering the necessary data to be able to report on our DEI of staff, trustees, participants, and job vacancy applicants. We are also spending a lot more time on ensuring the mental and physical well-being of our staff.

Consolidated income for 12 months is £1,095,638. This is down on the previous year by £150,223 due to a lapse period between a project completing and setting up a new project.

NLHF grants equates to £343,665 .

RESERVES POLICY

Unrestricted reserves position is £458,171, which equates to 17 months of operational costs. Froglife's reserve policy is to hold a minimum of 12 months unrestricted funds to cover operational obligations should the trust need to be wound up. The charity also holds unrestricted funds to cover grant payments that are received in arrears from funders.

INVESTMENT POLICY

Froglife has a policy not to invest funds in the stock market or through any other forms of investment.

CORPORATE SPONSORS

Holiday Cottages
Stay in Cornwall
Big Domain
Dealsqueen
Home Grown Timber
Waterside Nursery
Puddleplants
Wildwater

STATEMENT OF TRUSTEES' RESPONSIBILITIES

The trustees (who are also directors of The Froglife Trust for the purposes of company law) are responsible for preparing the Trustees' Annual Report and financial statements in accordance with the applicable law and United Kingdom Accountancy Standards (United Kingdom Generally Accepted Accounting Practices).

Company law requires the trustees to prepare the financial statements for each financial year, which give a true and fair view of the state of affairs of the charitable company and its subsidiary and of the incoming resources and application of resources, including the income and expenditure, of the charitable company and its subsidiary for that period in preparing these financial statements, the trustees are required to:

- Select suitable accounting policies and then apply them consistently.
- Observe the methods and principles in the SORP 2019 (FRS 102).
- Make judgements and estimates that are reasonable and prudent.
- State whether UK Accounting Standards have been followed, subject to any material departure disclosed and explained in the financial statements.
- Prepare the financial statements on the going concern basis unless it is inappropriate to presume that the charitable company will continue in operation.

The trustees are responsible for keeping adequate records that disclose with reasonable accuracy at any time the financial position of the charitable company and enable them to ensure that the financial statements comply with the Companies Act 2006, the Charities and Trustees investment (Scotland) Regulations 2006 (as amended). They are also responsible for safeguarding the assets of the charitable company and hence for taking reasonable steps for the prevention and detection of fraud and other irregularities.

The trustees are responsible for the maintenance and integrity of the corporate and financial information included on the charitable company's website.

Legislation in the United Kingdom governing the preparation and dissemination of financial statements

may differ from legislation in other jurisdictions.

Disclosure of information to the auditors

In so far as the trustees are aware:

- **There is no relevant audit information of which the Trust's auditors are unaware; and**
- **The trustees have taken all steps that they ought to have taken to make themselves aware of any relevant audit information and to establish that the auditor is aware of that information.**

Auditors

A resolution proposing that Saffery Chartered Accountants be appointed as auditors of the group will be put to the Annual General Meeting.

This report has been prepared in accordance with the special provisions relating to companies subject to small companies' regime within Paragraph 15 of the Companies Act 2006.

This report has been approved by the Board on 12th December 2024 and signed on its behalf by Inez Smith (Chair).



Opinion

We have audited the financial statements of The Froglife Trust (the 'parent charitable company') and its subsidiaries (the 'group') for the year ended 30 September 2024 which comprise the consolidated and charity statements of financial activities, the consolidated and charity balance sheets, the charity and consolidated statement of cash flows and notes to the financial statements, including significant accounting policies. The financial reporting framework that has been applied in their preparation is applicable law and United Kingdom Accounting Standards, including Financial Reporting Standard 102, the Financial Reporting Standard applicable in the UK and Republic of Ireland (United Kingdom Generally Accepted Accounting Practice).

In our opinion the financial statements:

- give a true and fair view of the state of the affairs of the group and the parent charitable company as at 30 September 2024 and of the group's incoming resources and application of resources, including its income and expenditure, for the year then ended;
- have been properly prepared in accordance with United Kingdom Generally Accepted Accounting Practice; and
- have been prepared in accordance with the requirements of the Companies Act 2006, the Charities and Trustee Investment (Scotland) Act 2005 and regulations 6 and 8 of the Charities Accounts (Scotland) Regulations 2006 (as amended).

Basis of opinion

We conducted our audit in accordance with International Standards on Auditing (UK) (ISAs (UK)) and applicable law. Our responsibilities under those standards are further described in the Auditor's responsibilities for the audit of the financial statements section of our report. We are independent of the group and parent charitable company in accordance with the ethical requirements that are relevant to our audit of the financial statements in the UK, including the FRC's Ethical Standard, and we have fulfilled our other ethical responsibilities in accordance with these requirements. We believe that the audit evidence we have obtained is sufficient and appropriate to provide a basis for our opinion.

Conclusions relating to going concern

In auditing the financial statements, we have concluded that the trustees' use of the going concern basis of accounting in the preparation of the financial statements is appropriate.

Based on the work we have performed, we have not identified any material uncertainties relating to events or conditions that, individually or collectively, may cast significant doubt on the group or the parent charitable company's ability to continue as a going concern for a period of at least twelve months from when the financial statements are authorised for issue.

Our responsibilities and the responsibilities of the trustees with respect to going concern are described in the relevant sections of this report.

Other information

The other information comprises the information included in the annual report, other than the financial statements and our auditor's report thereon. The trustees are responsible for the other information. Our opinion on the financial statements does not cover the other information and, except to the extent otherwise explicitly stated in our report, we do not express any form of assurance conclusion thereon.

THE FROGLIFE TRUST

INDEPENDENT AUDITORS REPORT TO THE TRUSTEES AND MEMBERS OF THE FROGLIFE TRUST

(CONTINUED)

Other information (continued)

Our responsibility is to read the other information and, in doing so, consider whether the other information is materially inconsistent with the financial statements or our knowledge obtained in the course of the audit or otherwise appears to be materially misstated. If we identify such material inconsistencies or apparent material misstatements, we are required to determine whether this gives rise to a material misstatement in the financial statements themselves. If, based on the work we have performed, we conclude that there is a material misstatement of this other information; we are required to report that fact.

We have nothing to report in this regard.

Other matters prescribed by the Companies Act 2006

In our opinion, based on the work undertaken in the course of the audit:

- the information given in the Trustees' Annual Report which includes the Directors' Report for the financial year for which the financial statements are prepared is consistent with the financial statements; and
- the Trustees' Annual Report which includes the Directors' Report has been prepared in accordance with applicable legal requirements.

Matters on which we are required to report by exception

In the light of the knowledge and understanding of the group and parent charitable company and their environment obtained in the course of the audit, we have not identified material misstatements in the Trustees' Annual Report.

We have nothing to report in respect of the following matters where the Companies Act 2006 and the Charities Accounts (Scotland) Regulations 2006 (as amended) require us to report to you if, in our opinion:

- adequate accounting records have not been kept by the parent charitable company, or returns adequate for our audit have not been received from branches not visited by us; or
- the parent charitable company's financial statements are not in agreement with the accounting records and returns; or
- certain disclosures of trustees' remuneration specified by law are not made; or
- we have not received all the information and explanations we require for our audit; or
- the trustees were not entitled to prepare the financial statements in accordance with the small companies' regime and take advantage of the small companies' exemption in preparing the Trustees' Annual Report.

Responsibilities of trustees

As explained more fully in the Statement of Trustees' Responsibilities set out above, the trustees (who are also the directors of the parent charitable company for the purposes of company law) are responsible for the preparation of the financial statements and for being satisfied that they give a true and fair view, and for such internal control as the trustees determine is necessary to enable the preparation of the financial statements that are free from material misstatement, whether due to fraud or error.

THE FROGLIFE TRUST

INDEPENDENT AUDITORS REPORT TO THE TRUSTEES AND MEMBERS OF THE FROGLIFE TRUST

(CONTINUED)

Responsibilities of trustees (continued)

In preparing the financial statements, the trustees are responsible for assessing the group and the parent charitable company's ability to continue as a going concern, disclosing, as applicable, matters related to going concern and using the going concern basis of accounting unless the trustees either intend to liquidate the group or the parent charitable company or to cease operations, or have no realistic alternative but to do so.

Auditor's responsibilities for the audit of the financial statements

We have been appointed as auditors under the Companies Act 2006 and under the Charities and Trustee Investment (Scotland) Act 2005 and report in accordance with regulations made under those Acts.

Our objectives are to obtain reasonable assurance about whether the group and parent financial statements as a whole are free from material misstatement, whether due to fraud or error, and to issue an auditor's report that includes our opinion. Reasonable assurance is a high level of assurance, but is not a guarantee that an audit conducted in accordance with ISAs (UK) will always detect a material misstatement when it exists. Misstatements can arise from fraud or error and are considered material if, individually or in the aggregate, they could reasonably be expected to influence the economic decisions of users taken on the basis of these financial statements.

Irregularities, including fraud, are instances of non-compliance with laws and regulations. We design procedures in line with our responsibilities, outlined above, to detect material misstatements in respect of irregularities, including fraud. The specific procedures for this engagement and the extent to which these are capable of detecting irregularities, including fraud are detailed below.

Identifying and assessing risks related to irregularities:

We assessed the susceptibility of the group and parent charitable company's financial statements to material misstatement and how fraud might occur, including through discussions with the trustees, discussions within our audit team planning meeting, updating our record of internal controls and ensuring these controls operated as intended. We evaluated possible incentives and opportunities for fraudulent manipulation of the financial statements. We identified laws and regulations that are of significance in the context of the group and parent charitable company by discussions with trustees and updating our understanding of the sector in which the group and parent charitable company operate. Laws and regulations of direct significance in the context of the group and parent charitable company include The Companies Act 2006, the Charities and Trustee Investment (Scotland) Act 2005, the Charities Accounts (Scotland) Regulations 2006 (as amended) and guidance issued by the Charity Commission for England and Wales and the Office of the Scottish Charity Regulator.

Audit response to risks identified:

We considered the extent of compliance with these laws and regulations as part of our audit procedures on the related financial statement items including a review of financial statement disclosures. We reviewed the parent charitable company's records of breaches of laws and regulations, minutes of meetings and correspondence with relevant authorities to identify potential material misstatements arising. We discussed the parent charitable company's policies and procedures for compliance with laws and regulations with members of management responsible for compliance.

THE FROGLIFE TRUST

INDEPENDENT AUDITORS REPORT TO THE TRUSTEES AND MEMBERS OF THE FROGLIFE TRUST

(CONTINUED)

Auditor's responsibilities for the audit of the financial statements (continued)

During the planning meeting with the audit team, the engagement partner drew attention to the key areas which might involve non-compliance with laws and regulations or fraud. We enquired of management whether they were aware of any instances of non-compliance with laws and regulations or knowledge of any actual, suspected or alleged fraud. We addressed the risk of fraud through management override of controls by testing the appropriateness of journal entries and identifying any significant transactions that were unusual or outside the normal course of business. We assessed whether judgements made in making accounting estimates gave rise to a possible indication of management bias. At the completion stage of the audit, the engagement partner's review included ensuring that the team had approached their work with appropriate professional scepticism and thus the capacity to identify non-compliance with laws and regulations and fraud

There are inherent limitations in the audit procedures described above and the further removed non-compliance with laws and regulations is from the events and transactions reflected in the financial statements, the less likely we would become aware of it. Also, the risk of not detecting a material misstatement due to fraud is higher than the risk of not detecting one resulting from error, as fraud may involve deliberate concealment by, for example, forgery or intentional misrepresentations, or through collusion.

A further description of our responsibilities is available on the Financial Reporting Council's website at: www.frc.org.uk/auditorsresponsibilities. This description forms part of our auditor's report.

Use of our report

This report is made solely to the parent charitable company's members, as a body, in accordance with Chapter 3 of Part 16 of the Companies Act 2006, and to the parent charitable company's trustees, as a body, in accordance with Regulation 10 of the Charities Accounts (Scotland) Regulations 2006. Our audit work has been undertaken so that we might state to the parent charitable company's members and trustees those matters we are required to state to them in an auditor's report and for no other purpose. To the fullest extent permitted by law, we do not accept or assume responsibility to anyone other than the parent charitable company, the parent charitable company's members and trustees as a body, for our audit work, for this report, or for the opinions we have formed.

Saffery LLP

18 December 2024

Gareth Norris (Senior Statutory Auditor)

Date

For an on behalf of Saffery LLP

Westpoint
Peterborough Business Park
Lynch Wood
Peterborough
PE2 6FZ

Statutory Auditors

Saffery LLP is eligible to act as an auditor in terms of section 1212 of the Companies Act 2006

THE FROGLIFE TRUST
CONSOLIDATED STATEMENT OF FINANCIAL ACTIVITIES (inc Income and Expenditure Account)
FOR YEAR ENDED 30 SEPTEMBER 2024

	<i>Note</i>	Unrestricted	Restricted	Total 2024	Total 2023
		£	£	£	£
INCOME					
Donations and legacies	<i>2a</i>	30,882	998	31,880	71,400
Grants	<i>2b</i>	208,700	575,277	783,977	875,400
Charitable activities	<i>3</i>	49,522	9,035	58,557	127,025
<i>Income from other trading activities:</i>					
Other income	<i>4</i>	6,661	-	6,661	2,048
Commercial trading operation		208,401	-	208,401	166,840
Investment income	<i>5</i>	6,162	-	6,162	3,150
Total income		510,328	585,310	1,095,638	1,245,863
EXPENDITURE ON:					
Raising funds	<i>7</i>	177,121	-	177,121	138,824
Charitable activities	<i>6</i>	33,509	854,320	887,829	1,197,342
Total expenditure		210,630	854,320	1,064,950	1,336,166
Net income / (expenditure) for the year		299,698	(269,010)	30,688	(90,303)
Transfers between funds	<i>17a</i>	(228,602)	228,602	-	-
Net movement in funds		71,096	(40,408)	30,688	(90,303)
Reconciliation of funds:					
Total funds brought forward	<i>17a</i>	387,075	94,759	481,834	572,137
Total funds carried forward		458,171	54,351	512,522	481,834

The statement of financial activities includes all gains and losses recognised in the year.
All income and expenditure derive from continuing activities.
The notes on the following pages form part of these accounts.

THE FROGLIFE TRUST
CHARITY STATEMENT OF FINANCIAL ACTIVITIES (inc Income and Expenditure Account)
FOR YEAR ENDED 30 SEPTEMBER 2024

	<i>Note</i>	Unrestricted £	Restricted £	Total 2024 £	Total 2023 £
INCOME					
Donations and legacies	<i>2a</i>	30,882	998	31,880	71,400
Grants	<i>2b</i>	208,700	575,277	783,977	875,400
Charitable activities	<i>3</i>	49,522	9,035	58,557	127,025
<i>Income from other trading activities:</i>					
Other income	<i>4</i>	6,661	-	6,661	2,048
Investment income	<i>5</i>	37,442	-	37,442	31,166
Total income		333,207	585,310	918,517	1,107,039
EXPENDITURE ON:					
Charitable activities	<i>6</i>	33,509	854,320	887,829	1,197,342
Total expenditure		33,509	854,320	887,829	1,197,342
Net income / (expenditure) for the year		299,698	(269,010)	30,688	(90,303)
Transfers between funds	<i>17a</i>	(228,602)	228,602	-	-
Net movement in funds		71,096	(40,408)	30,688	(90,303)
Reconciliation of funds:					
Total funds brought forward	<i>17a</i>	370,568	94,759	465,327	555,630
Total funds carried forward		441,664	54,351	496,015	465,327

The statement of financial activities includes all gains and losses recognised in the year.
All income and expenditure derive from continuing activities.
The notes on the following pages form part of these accounts.

**THE FROGLIFE TRUST
CONSOLIDATED BALANCE SHEET
AS AT 30 SEPTEMBER 2024**

	Note	2024	2023
FIXED ASSETS			
Tangible fixed assets	11	-	-
CURRENT ASSETS			
Stocks		545	524
Debtors	14	144,138	129,187
Cash at bank and in hand		<u>424,634</u>	<u>405,515</u>
		569,317	535,226
CURRENT LIABILITIES			
Creditors: amounts due within one year	15	(56,795)	(53,392)
		<u>512,522</u>	<u>481,834</u>
NET CURRENT ASSETS			
		512,522	481,834
TOTAL ASSETS LESS CURRENT LIABILITIES			
		512,522	481,834
Creditors: amounts due after one year		-	-
TOTAL NET ASSETS			
		<u><u>512,522</u></u>	<u><u>481,834</u></u>
FUNDS OF THE CHARITY			
Restricted funds	17	54,351	94,759
Unrestricted funds	17	458,171	387,075
		<u><u>512,522</u></u>	<u><u>481,834</u></u>

The trustees have prepared group accounts in accordance with section 398 of the Companies Act 2006 and section 138 of the Charities Act 2011. These accounts are prepared in accordance with the special provisions of Part 15 of the Companies Act relating to small companies and constitute the annual accounts required by the Companies Act 2006 and are for circulation to members of the company. The notes on the following pages form part of these accounts.

The financial statements were approved by the Board of Trustees on 12/12/24 and signed on their behalf by:



**Ms Inez Smith
Chair**

Company Registration No: 04382714 (E&W)

**THE FROGLIFE TRUST
CHARITY BALANCE SHEET
AS AT 30 SEPTEMBER 2024**

	Note	2024		2023	
FIXED ASSETS					
Tangible fixed assets	11	0		0	
Investments	12	100	100	100	100
CURRENT ASSETS					
Stocks		545		524	
Debtors	14	348,825		259,183	
Cash at bank and in hand		198,252	547,622	240,439	500,146
CURRENT LIABILITIES					
Creditors: amounts due within one year	15		(51,707)		(34,919)
NET CURRENT ASSETS			495,915		465,227
TOTAL ASSETS LESS CURRENT LIABILITIES			496,015		465,327
Creditors: amounts due after one year					
TOTAL NET ASSETS			496,015		465,327
FUNDS OF THE CHARITY					
Restricted funds	17		54,351		94,759
Unrestricted funds	17		441,664		370,568
			496,015		465,327

The notes on the following pages form part of these accounts.

The financial statements were approved by the Board of Trustees on ^{12/12/24} and signed on their behalf by:



Ms Inez Smith
Chair

Company Registration No: 04382714 (E&W)

THE FROGLIFE TRUST
STATEMENT OF CASH FLOWS AND CONSOLIDATED STATEMENT OF CASH FLOWS
AS AT 30 SEPTEMBER 2024

	<i>Note</i>	2024 Group £	2024 Charity £	2023 Group £	2023 Charity £
Cash Flows From Operating Activities					
Net cash provided by / (used in) operating activities	19	12,957	(79,628)	(126,146)	(168,234)
Cash Flows from Investing Activities					
Investment interest		6,162	37,442	3,150	31,166
Change in cash and cash equivalents in the year		19,119	(42,186)	(122,996)	(137,068)
Cash and cash equivalents brought forward		405,515	240,438	528,511	377,506
Cash and cash equivalents carried forward	21	424,634	198,252	405,515	240,438

THE FROGLIFE TRUST
NOTES TO THE FINANCIAL STATEMENTS
FOR YEAR ENDED 30 SEPTEMBER 2024

1 ACCOUNTING POLICIES

The principal accounting policies adopted, judgements and key sources of estimation uncertainty in the preparation of the financial statements are as follows:

a) Basis of preparation of financial statements

The financial statements have been prepared in accordance with Accounting and Reporting by Charities: Statement of Recommended Practice applicable to charities preparing their accounts in accordance with the Financial Reporting Standard applicable in the UK and Republic of Ireland (FRS 102)(effective 1 January 2019) - (Charities SORP (FRS 102), the Financial Reporting Standard applicable in the UK and Republic of Ireland (FRS102), the Companies Act 2006, the Charities and Trustee Investment (Scotland) Act 2005 and regulation 8 of the Charities Accounts (Scotland) Regulations 2006 (as amended).

The charity meets the definition of a public benefit entity under FRS 102. Assets and liabilities are initially recognised at historical cost or transaction value unless otherwise stated in the relevant accounting policy notes.

The accounts are produced with the underlying currency being GBP.

b) Legal status of the Charity

The charity is a company limited by guarantee and has no share capital. In the event of the charity being wound up, the liability in respect of the guarantee is limited to £1 per member of the charity.

c) Going concern

At the time of approving the financial statements, the trustees have a reasonable expectation that the Trust has adequate resources to continue in operational existence for the foreseeable future. The trustees have considered the level of funds held and the expected level of income and expenditure for 12 months from authorising these financial statements. The Trust is reliant on grants to be able to carry out its objectives. Whilst these may be affected but the impact of Covid-19, the Trust has an adequate number of grant applications already in place or accepted for the coming 12months. Additionally, further grants have been accepted post year end, with more grant applications coming back online. Thus the trustees continue to adopt the going concern basis of accounting in preparing the financial statements.

d) Group financial statements

The financial statements consolidate the results of the charity and its wholly owned subsidiary Froglife Trading Ltd on a line-by-line basis.

e) Fund accounting

Unrestricted funds are available to spend on activities that further any of the purposes of the charity. Restricted funds account for situations where a donor requires their donation must be spent on a specific purpose .

The aim and use of each material restricted fund is set out in the notes to the financial statements.

f) Income

Income is recognised when the charity has entitlement to the funds, any performance conditions attached to the items of income have been met, it is probable that the income will be received and the amount can be measured reliably.

Where income has related expenditure (as with fundraising or contract income), the income and related expenditure are reported gross in the Statement of Financial Activities.

THE FROGLIFE TRUST
NOTES TO THE FINANCIAL STATEMENTS
FOR YEAR ENDED 30 SEPTEMBER 2024

1 ACCOUNTING POLICIES (CONTINUED)

f) Income (continued)

Where income has related expenditure (as with fundraising or contract income), the income and related expenditure are reported gross in the Statement of Financial Activities.

Donations, grants (including government grants) and gifts are recognised when receivable. In the event that a donation is subject to fulfilling performance conditions before the charity is entitled to the funds, the income is deferred and not recognised until it is probable that those conditions will be fulfilled in the reporting period.

Income from Gift Aid tax reclaims is recognised for any donations with relevant Gift Aid certificates recognised in income for the year. Any amounts of Gift Aid not received by the year end are accounted for in income and accrued income in debtors.

For legacies, entitlement is taken on a case by case basis as the earlier of the date on which: the charity is aware that probate has been granted, the estate has been finalised and notification has been made by the executor(s) to the charity that a distribution will be made, or when a distribution is received from the estate. Receipt of a legacy, in whole or in part, is only considered probable when the amount can be measured reliably and the charity has been notified of the executors intention to make a distribution. If the legacy is in the form of an asset other than cash or an asset listed on a recognised stock exchange, recognition is subject to the value of the asset being able to be reliably measured and title to the asset has passed to the charity. Where legacies have been notified or the charity is aware of the granting of probate, and the criteria for income have not been met, then the legacy is treated as a contingent asset and disclosed if material.

Income received in advance for a future fundraising event or for visitor fees received in advance of an event are deferred until the criteria for income recognition are met.

Interest on deposit funds held is included when receivable and the amount can be measured reliably by the charity which is normally upon notification of the interest paid or payable by the bank. Dividends are recognised once the dividend has been declared and notification has been received of the dividend due. This is normally upon notification by our investment advisor of the dividend yield of the investment portfolio. Income tax recoverable in relation to investment income is recognised at the same time the investment income is receivable.

Sponsorship from events, fundraising and events registration fees are recognised in income when the event takes place. Trading income is recognised on point of sale for both donated and purchased goods.

g) Expenditure and irrecoverable VAT

Expenditure is recognised once there is a legal or constructive obligation to make a payment to a third party, it is probable that settlement will be required and the amount of the obligation can be measured reliably. All expenditure is accounted for on an accruals basis under the following headings:

Costs of raising funds are those cost incurred in attracting voluntary income and those incurred in fundraising.

Expenditure on charitable activities includes expenditure associated with conservation of amphibians and reptiles, education and training and providing information and awareness and include both the direct costs and support costs relating to these activities.

Where costs cannot be directly attributed to particular headings, they have been allocated to activities on a basis consistent with the use of those resources.

THE FROGLIFE TRUST
NOTES TO THE FINANCIAL STATEMENTS
FOR YEAR ENDED 30 SEPTEMBER 2024

1 ACCOUNTING POLICIES (CONTINUED)

h) Volunteers

The value of the services provided by volunteers cannot be reliably estimated and therefore is not incorporated into these financial statements. Further details are provided in the Trustee's Report.

i) Fixed assets

All assets are capitalised at their historical cost when purchased.

Depreciation is provided to write off the cost less estimated residual value of all fixed assets over their expected economic useful lives as follows:

All fixed assets - 25% per annum straight line

The need for any impairment of a fixed asset write down is considered if there is concern over the carrying value of an asset and is assessed by comparing that carrying value against the value in use or realisable value of the asset when appropriate.

j) Investments

Fixed asset investments represent the equity share in Froglife Ltd, the wholly owned subsidiary company and are stated at cost in the charity balance sheet.

k) Stock

Stocks have been valued at the lower of cost and net realisable value

Net realisable value is based upon estimated selling price less further costs expected to be incurred to disposal. Provision is made for obsolete and slow moving items when appropriate.

l) Debtors

Trade and other debtors are recognised at the settlement amount due after any trade discount offered. Prepayments are valued at the amount prepaid net of any trade discounts due. Accrued income and tax recoverable is included at the best estimate of the amounts receivable at the balance sheet date.

m) Cash at bank and in hand

Cash at bank and cash in hand includes cash and short term highly liquid investments with a short maturity of three months or less from the date of acquisition or opening of the deposit or similar account.

n) Creditors

Creditors are recognised where the charity has a present obligation resulting from a past event that will probably result in the transfer of funds to a third party and the amount due to settle the obligation can be measured or estimated reliably. Creditors are normally recognised at their settlement amount after allowing for any trade discounts due.

o) Financial instruments

The Trust has elected to apply the provisions of Section 11 'Basic Financial Instruments' and Section 12 'Other Financial Instruments Issues' of FRS 102 to all of its financial instruments.

Financial assets are recognised in the Trust's Statement of Financial Position when the Trust becomes party to the contractual provisions of the instrument.

Financial assets are classified into specified categories. The classification depends on the nature and purpose of the financial assets and is determined at the time of recognition.

1 ACCOUNTING POLICIES (CONTINUED)

o) Financial instruments (continued)

Basic financial assets

Basic financial assets, which include trade and other debtors, are initially measured at transaction price including transaction costs and are subsequently carried at amortised cost using the effective interest method unless the arrangement constitutes a financing transaction, where the transaction is measured at the present value of the future receipts discounted at a market rate of interest. Other financial assets classified as fair value through the statement of financial activities are measured at fair value.

Other financial assets

Trade debtors, loans and other receivables that have fixed or determinable payments that are not quoted in an active market are classified as 'loans and receivables'. Loans and receivables are measured at amortised cost using the effective interest method, less any impairment.

Interest is recognised by applying the effective interest rate, except for short-term receivables when the recognition of interest would be immaterial. The effective interest method is a method of calculating the amortised cost of a debt instrument and of allocating the interest income over the relevant period.

The effective interest rate is the rate that exactly discounts estimated future cash receipts through the expected life of the debt instrument to the net carrying amount on initial recognition.

Impairment of financial assets

Financial assets, other than those held at fair value through the statement of financial activities, are assessed for indicators of impairment at each reporting end date.

Financial assets are impaired where there is objective evidence that, as a result of one or more events that occurred after the initial recognition of the financial asset, the estimated future cash flows have been affected. The impairment loss is recognised in the statement of financial activities.

Derecognition of financial assets

Financial assets are derecognised only when the contractual rights to the cash flows from the asset expire, or when it transfers the financial asset and substantially all the risks and rewards of ownership to another entity.

Classification of financial liabilities

Basic financial liabilities

Basic financial liabilities, including trade and other creditors, bank loans, loans from fellow group are initially recognised at transaction price unless the arrangement constitutes a financing transaction, where the debt instrument is measured at the present value of the future receipts discounted at a market rate of interest.

Trade creditors are obligations to pay for goods or services that have been acquired in the ordinary course of business from suppliers. Accounts payable are classified as 'creditors: amounts falling due within one year' if payment is due within one year or less. If not, they are presented as 'creditors: amounts falling due after more than one year'. Trade creditors are recognised initially at transaction price and subsequently measured at amortised cost using the effective interest method.

THE FROGLIFE TRUST
NOTES TO THE FINANCIAL STATEMENTS
FOR YEAR ENDED 30 SEPTEMBER 2024

1 ACCOUNTING POLICIES (CONTINUED)

o) Financial instruments (continued)

Other financial liabilities

Other financial liabilities, including debt instruments that do not meet the definition of a basic financial instrument, are measured at fair value, net of transaction costs. They are subsequently measured at amortised cost using the effective interest method.

Other financial liabilities (continued)

The effective interest method is a method of calculating the amortised cost of a financial liability and of allocating interest expense over the relevant period. The effective interest rate is the rate that exactly discounts estimated future cash payments through the expected life of the financial liability to the net carrying amount on initial recognition.

Derecognition of financial liabilities

Financial liabilities are derecognised when, and only when, the Charity's obligations are discharged, cancelled, or they expire.

p) Operating leases

Operating leases are recognised over the period of which the lease falls due.

Benefits received and receivable as an incentive to sign an operating lease are recognised on a straight line basis over the period of the lease.

q) Taxation

The company is considered to pass the test set out in Paragraph 1 Schedule 6 of the Finance Act 2010 and therefore it meets the definition of a charitable company for UK corporation tax purposes.

Accordingly, the company is potentially exempt from taxation in respect of income or capital gains received within categories covered by Chapter 3 Part 11 of the Corporation Tax Act 2010 or Section 256 of the Taxation of Chargeable Gains Act 1992, to the extent that such income or gains are applied exclusively to charitable purposes.

2a DONATIONS AND LEGACIES

	2024	2024	2023	2023
	Group	Charity	Group	Charity
Unrestricted funds:	£	£	£	£
Donations	30,882	30,882	63,326	63,326
	30,882	30,882	63,326	63,326
	2024	2024	2023	2023
	Group	Charity	Group	Charity
Restricted funds:	£	£	£	£
Donations	998	998	8,074	8,074
	998	998	8,074	8,074
	998	998	8,074	8,074

THE FROGLIFE TRUST
NOTES TO THE FINANCIAL STATEMENTS
FOR YEAR ENDED 30 SEPTEMBER 2024

2b GRANTS RECEIVED	2024	2023
Group and charity	£	£
Unrestricted funds:		
Esmee Fairbairn Foundation	100,000	110,000
Postcode Animal Lottery	50,000	50,000
Garfield Weston Trust	50,000	30,000
James Gibson Charitable Trust	3,000	10,000
Henocq Law	5,000	-
Other grants under £1,000	700	600
Total unrestricted funds	208,700	200,600
Group and charity	£	£
Restricted funds:		
National Heritage Lottery Fund	343,664	369,946
Natural England	58,435	-
City Bridge Trust	39,400	66,453
The Robertson Trust	30,800	32,200
R S Mcdonald	15,000	15,000
Masonic Charitable Trust	14,735	9,348
Cambridgeshire Community Foundation	15,952	-
Department for work & pensions	12,375	-
Simon Gibson Trust	9,133	-
Heart of England-WMCA	9,012	-
CLA Charitable Trust	5,000	-
Hugh Fraser Foundation	5,000	-
St James Place	4,767	-
Neighbourly Foundation	3,000	-
The Hospital Saturday Fund	2,000	-
Westham House	1,675	-
Wild Wet Web	1,500	-
Enjoolata Foundation	1,479	-
Coop Community Fund	1,100	-
The Edward & Dorothy Foundation	1,000	-
Hodge Foundation	-	5,000
Biffa	-	48,278
Nature Scot	-	30,613
Queens Cross Housing Association	-	4,876
West Midlands District Council	-	59,706
D'Oyly Carte Charitable Trust	-	3,000
Sussex Community Foundation	-	9,917
John Swire	-	20,000
Other grants under £1,000	250	463
Total restricted funds	575,277	674,800

THE FROGLIFE TRUST
NOTES TO THE FINANCIAL STATEMENTS
FOR YEAR ENDED 30 SEPTEMBER 2024

3 INCOME FROM CHARITABLE ACTIVITIES	2024	2023
Group and Charity	£	£
Conservation of amphibians and reptiles	21,450	21,450
Education and training	27,668	3,680
Information and awareness	404	1,759
Unrestricted funds:	<u>49,522</u>	<u>26,889</u>
Conservation of amphibians and reptiles	3,051	9,301
Education and training	865	14,375
Information and awareness	5,119	76,460
Restricted funds:	<u>9,035</u>	<u>100,136</u>
4 OTHER INCOME	2024	2023
Group and charity	£	£
Corporate sponsorship	2,046	1,963
Other income	4,615	85
	<u>6,661</u>	<u>2,048</u>

All fundraising event income in both the current and previous year relate to unrestricted funds.

5 INVESTMENT INCOME	2024	2024	2023	2023
	Group	Charity	Group	Charity
	£	£	£	£
Bank interest	6,162	3,417	3,150	2,049
Profits from trading company	-	34,025	-	29,117
	<u>6,162</u>	<u>37,442</u>	<u>3,150</u>	<u>31,166</u>

All investment income in both the current year and prior year relate to unrestricted funds.

6 EXPENDITURE	Direct	Support	2024
Expenditure on Charitable Activities - Current Year	Costs	Costs	Total
Group and Charity	£	£	£
Conservation of amphibians and reptiles	204,795	208,659	413,454
Education and training	322,955	105,935	428,890
Information and awareness	39,065	6,420	45,485
	<u>566,815</u>	<u>321,014</u>	<u>887,829</u>

Included within expenditure on charitable activities are restricted funds of £854,320 and unrestricted funds of £33,509.

THE FROGLIFE TRUST
NOTES TO THE FINANCIAL STATEMENTS
FOR YEAR ENDED 30 SEPTEMBER 2024

6 EXPENDITURE (continued)

Expenditure on Charitable Activities - Prior Year	Direct Costs	Support Costs	2023 Total
Group and Charity	£	£	£
Conservation of amphibians and reptiles	335,533	217,948	553,481
Education and training	439,496	110,651	550,147
Information and awareness	87,008	6,706	93,714
	<u>862,037</u>	<u>335,305</u>	<u>1,197,342</u>

Included within expenditure on charitable activities are restricted funds of £1,178,705 and unrestricted funds of £18,637.

7 RAISING FUNDS

Expenditure on raising funds as shown in the group statement of financial activities relates to costs incurred by the trading subsidiary which relate to unrestricted funds in both the current and prior year.

8 ANALYSIS OF SUPPORT COSTS

	Conservation	Education & Training	Information & awareness	2024 Total
	£	£	£	£
Rent and rates	9,251	4,697	285	14,233
Insurance	4,169	2,117	128	6,414
Cleaning and waste	9	5	0	14
Travel and Subsistence	7,811	3,966	240	12,017
Printing, postage and stationery	3,128	1,588	96	4,812
Computer and telephone	9,782	4,966	301	15,049
Repairs and renewals	600	305	18	923
Staff costs	155,564	78,979	4,787	239,330
Recruitment and training	405	206	12	623
Legal and professional fees	2,097	1,065	65	3,227
Depreciation	-	-	-	-
Bank charges	256	130	8	394
Miscellaneous	5,423	2,751	168	8,342
Governance - trustee expenses	368	187	11	566
Governance - audit costs	9,796	4,973	301	15,070
	<u>208,659</u>	<u>105,935</u>	<u>6,420</u>	<u>321,014</u>

THE FROGLIFE TRUST
NOTES TO THE FINANCIAL STATEMENTS
FOR YEAR ENDED 30 SEPTEMBER 2024

8 ANALYSIS OF SUPPORT COSTS (Continued)

	Conservation	Education & Training	Information & awareness	2023 Total
	£	£	£	£
Rent and rates	11,900	6,042	366	18,308
Insurance	3,104	1,576	96	4,776
Cleaning and waste	14	7	0	21
Travel and Subsistence	6,031	3,062	186	9,279
Printing, postage and stationery	2,122	1,078	65	3,265
Computer and telephone	7,210	3,661	222	11,093
Repairs and renewals	(1,279)	(649)	(39)	(1,967)
Staff costs	144,179	73,196	4,437	221,812
Recruitment and training	675	343	21	1,039
Legal and professional fees	23,116	11,736	711	35,563
Depreciation inc loss on disposal	-	-	-	-
Bank charges	145	74	4	223
Irrecoverable VAT on support costs	6,014	3,053	185	9,252
Miscellaneous	5,726	2,907	176	8,809
Governance - trustee expenses	271	138	8	417
Governance - audit costs	8,720	4,427	268	13,415
	<u>217,948</u>	<u>110,651</u>	<u>6,706</u>	<u>335,305</u>

In 2024 and 2023 support costs have been allocated in line with the aims of the project and its activity undertaken.

9 STAFF EMOLUMENTS AND TRUSTEE EXPENSES

	2024	2023
	£	£
Wages and salaries	616,062	629,920
Social security costs	53,615	56,117
Pension costs	13,195	13,027
	<u>682,872</u>	<u>699,064</u>

Pension costs were paid under the new auto-enrolment requirements to the National Employers Savings Trust.

	2024	2023
	No	No
The average number of employees during the year was:		
Commercial trading operations	1	1
Direct Charitable activities	17	18
Support services	7	6
	<u>25</u>	<u>25</u>

One employee received emoluments in excess of £60,000 (2023: one)

THE FROGLIFE TRUST
NOTES TO THE FINANCIAL STATEMENTS
FOR YEAR ENDED 30 SEPTEMBER 2024

9 STAFF EMOLUMENTS AND TRUSTEE EXPENSES (continued)

The charity considers its key management personnel to comprise of the Trustees and the senior management team as disclosed in the Trustees' Report. None of the trustees received any remuneration or benefits in kind from the charity during the year (2023: £nil). The total employee benefits of 4 key management personnel (2023: 4 key management personnel) were £162,131 (2023: £150,447).

Expenses relating to travel and subsistence for attendance at Trustee meetings was reimbursed to 4 trustees (2023: 2) during the year amounted to £567 (2023: £417).

10 NET INCOMING / (EXPENDITURE)

	2024	2023
	£	£
Net incoming /(expenditure) is stated after charging:		
Auditors' remuneration:		
for audit services	18,551	16,441
for accountancy services	2,235	940
Operating lease rentals	18,635	17,949

11 TANGIBLE FIXED ASSETS

Group and charity	Office Equipment	Computer Equipment	Total
	£	£	£
Cost or Valuation			
As at 1 October 2023	2,172	23,932	26,104
As at 30 September 2024	2,172	23,932	26,104
Depreciation			
As at 1 October 2023	2,172	23,932	26,104
Charge for the year	-	-	-
As at 30 September 2024	2,172	23,932	26,104
Net Book Value			
As at 30 September 2024	-	-	-
As at 30 September 2023	-	-	-

12 INVESTMENTS

	2024	2023
	£	£
Charity		
Equity investment in trading subsidiary	100	100
Total charity investment	100	100

13 TRADING SUBSIDIARY

The Charity owns 100 shares of £1 each in it's trading subsidiary, Froglife Ltd (Company No: 02348393) incorporated in the United Kingdom, whose principle place of business is Brightfield Business Hub, Bakewell Road, Orton Southgate, Peterborough PE2 6XU and whose main purpose is to carry out the commercial conservation contracts and surveys. These are the only shares allotted, called up and fully paid. The activities and results of this company are summarised as follows:

THE FROGLIFE TRUST
NOTES TO THE FINANCIAL STATEMENTS
FOR YEAR ENDED 30 SEPTEMBER 2024

13 TRADING SUBSIDIARY (continued)

	2024	2023
	£	£
Turnover	208,401	166,840
Costs of sales	(165,153)	(128,454)
Gross Profit	43,248	38,386
Operating expenses	(10,535)	(9,171)
Profit on ordinary activities before interest	32,713	29,215
Interest receivable	2,744	1,101
Interest payable	(1,432)	(1,199)
Net trading profit	34,025	29,117
Gift aid donated to parent charity	(34,025)	(29,117)
Profit for the year	-	-
<u>Balance Sheet:</u>		
Current assets	226,403	185,477
Liabilities	(209,796)	(168,870)
Net assets	16,607	16,607
Represented by:		
Capital	100	100
Reserves	16,507	16,507
	16,607	16,607

14 DEBTORS

	2024	2024	2023	2023
	Group	Charity	Group	Charity
	£	£	£	£
Trade debtors	2,110	2,090	2,230	2,230
Amounts owed by group undertakings	-	204,707	-	150,396
Taxation recoverable	-	-	-	-
Other debtors	750	750	750	750
Prepayments and accrued income	141,278	141,278	126,207	105,807
	144,138	348,825	129,187	259,183

15 CREDITORS: Amounts falling due within one year

	2024	2024	2023	2023
	Group	Charity	Group	Charity
	£	£	£	£
Trade creditors	23,886	23,886	26,469	11,475
Taxation and social security	13,131	12,723	11,647	11,193
Other creditors	-	-	-	-
Accruals and deferred income	19,778	15,098	15,276	12,251
	56,795	51,707	53,392	34,919

THE FROGLIFE TRUST
NOTES TO THE FINANCIAL STATEMENTS
FOR YEAR ENDED 30 SEPTEMBER 2024

16 COMMITMENTS UNDER OPERATING LEASES

At 30 September the group and charity had total commitments under non-cancellable operating leases as follows:

	2024 Land and buildings	2024 Other	2023 Land and buildings	2023 Other
Due within one year	13,314	1,080	9,714	260
Due in 2-5 years	-	270	-	325
	13,314	1,350	9,714	585

17a FUNDS -current year

Group	Brought forward 1/10/23	Income	Expenditure	Transfers	Carried forward 30/9/24
	£	£	£	£	£
<u>Unrestricted Funds</u>					
General funds	387,075	510,328	(210,629)	(228,602)	458,172
<u>Restricted Funds</u>					
Green Pathways Glasgow	8,250	57,684	(83,137)	37,435	20,232
Wildlife surveys & research tunnels	16,747	-	(26,232)	9,485	-
Somerset Green Pathways for Life	1,500	30,196	(33,149)	19,911	18,458
Leaping forward for Dementia - London	13,399	39,400	(62,236)	9,437	-
Leap Frog Schools - habitat projects	5,183	-	-	-	5,183
Discovering Dewponds - Sussex incorporating Access to Work	-	74,196	(109,763)	35,567	-
London Blue Chain-Development	-	1,267	(2,708)	1,441	-
Coalface to Wildspace - Midlands	-	84,854	(145,920)	62,279	1,213
West Midlands District Council, co funding Coalface to Wildspace - Midlands	34,680	18,145	(23,839)	(28,986)	-
Transforming Lives	-	113,870	(154,871)	42,298	1,297
Peterborough Neighbourhood Wildlife Corridors	15,000	7,867	(30,816)	15,917	7,968
London Blue Chain-Main project	-	157,831	(181,649)	23,818	-
Total Restricted Funds	94,759	585,310	(854,320)	228,602	54,351
Total Funds	481,834	1,095,638	(1,064,949)	-	512,523

Included in expenditure for restricted funds are support costs that are not covered by grant income, charitable activities and donations; thus it is necessary to transfer funds from unrestricted funds to cover these costs. A full cost record of the project is required when reporting to funders.

Charity

Funds are as the table above but included within Unrestricted General Funds brought forward and carried forward is £16,507 (2023: £16,507) which relates to Froglife Limited, the Charity's trading subsidiary.

THE FROGLIFE TRUST
NOTES TO THE FINANCIAL STATEMENTS
FOR YEAR ENDED 30 SEPTEMBER 2024

17b FUNDS -prior year	Brought forward				Carried forward
Group	1/10/22	Income	Expenditure	Transfers	30/9/23
	.	£	£	£	£
<u>Unrestricted Funds</u>					
General funds	403,562	462,853	(157,461)	(321,879)	387,075
<u>Restricted Funds</u>					
Green Pathways Glasgow	3,604	56,595	(58,703)	6,754	8,250
Wildlife surveys & research tunnels	16,747	-	-	-	16,747
Somerset Green Pathways for Life	6,853	12,968	(25,442)	7,121	1,500
Come Forth for Wildlife - Main	-	81,838	(141,970)	60,132	-
Leaping forward for Dementia - London	10,436	66,453	(63,490)	-	13,399
Leap Frog Schools - habitat projects	5,183	-	-	-	5,183
Discovering Dewponds - Sussex	3,215	129,324	(187,853)	55,314	-
Toads On Roads - Group Funds	4,600	-	(4,600)	-	-
Scottish Green Pathways for Life	3,635	-	(5,288)	1,653	-
Peterborough Green Pathways - 2022	16,719	7,479	(24,575)	377	-
Fife Living Waters	70,642	-	(101,505)	30,863	-
London Blue Chain	15,641	25,886	(53,692)	12,165	-
Eye Green - Biffa & PCC	10,236	48,278	(67,115)	8,601	-
Coalface to Wildspace - Midlands	1,064	79,430	(160,859)	80,366	-
Transforming Lives	-	87,680	(110,534)	22,854	-
Natural England Species Recovery	-	76,460	(88,907)	12,447	-
Coalface to Wildspace - Scotland	-	30,613	(42,130)	11,517	-
Peterborough Neighbourhood Wildlife Corridors	-	20,300	(16,743)	11,443	15,000
West Midlands District Council	-	59,706	(25,026)	-	34,680
Scottish Priority Ponds	-	-	(156)	156	-
Green Pathways Peterborough & Fenland Nature & Nourishment	-	-	(116)	116	-
Total Restricted Funds	168,576	783,010	(1,178,705)	321,879	94,759
Total Funds	572,137	1,245,863	(1,336,166)	-	481,834

Charity

Funds are as the table above but included within Unrestricted General Funds brought forward and carried forward is £16,507 (2022: £16,507) which relates to Froglife Limited, the Charity's trading subsidiary.

17 FUNDS NOTES

Leaping Forward for Dementia – London: through the support of a City Bridge Trust, we have continued to deliver sessions with people living with dementia on several green spaces in London.

London Blue Chain: we have started the delivery phase.

THE FROGLIFE TRUST
NOTES TO THE FINANCIAL STATEMENTS
FOR YEAR ENDED 30 SEPTEMBER 2024

17 FUNDS NOTES -continued

Peterborough, Fenlands & Scotland Green Pathways Scheme : have all continued to operate delivering outdoor nature focused session with vulnerable and/or disadvantaged children and young people.

Somerset Green Pathways for Life : delivers sessions at three venues around Frome for people living with dementia.

Discovering Dewponds - Sussex: Is in its final year of delivery and has met all the targets and has exceeded many of them.

Midlands Coalface to Wildspace : This project enters its final year. The habitat works are all completed, and it continues with its programme of public engagement.

Transforming Lives : the project has successfully trained its second cohort of trainees in Reserve Nature management and volunteer engagement. The third cohort are now in training.

Amphibian Mortality: our partnership with the Zoological Society of London, British Trust for Ornithology and RSPB has continued, with Froglife receiving reports of amphibian diseases and mortality.

Toads on Roads: we continue to co-ordinate the seasonal Toads on Roads patrols and analyse the data that they submit to us.

Reserve Management: we have continued with the management Hampton, Eye Green and Boardwalks Nature Reserves.

Research : This year entered and completed several applied research projects.

Social Media / Enquiry Service: our social media engagement continues to rise particularly as we engage in new social media platforms. We have seen a drop in email enquiries, but these are now directed through social media.

Digital: we have continued to expand our digital outputs, this year creating statues with QR codes.

Website: we continue to update and maintain our website to a very high standard.

Froglife Ltd t/a Froglife Ecological Services (FES): FES has continued to grow and explore new areas of work for private contract work.

18a ANALYSIS OF NET ASSETS BETWEEN FUNDS-current year

Group	Unrestricted	Restricted	Total 2024
	£	£	£
Tangible fixed assets	-	-	-
Current assets	488,588	80,729	569,317
Creditors: amount falling due within one year	(30,417)	(26,378)	(56,795)
Creditors: amount falling due in more than one year	-	-	-
	<u>458,171</u>	<u>54,351</u>	<u>512,522</u>
Charity	Unrestricted	Restricted	Total 2024
	£	£	£
Tangible fixed assets	100	-	100
Current assets	466,893	80,729	547,622
Creditors: amount falling due within one year	(25,329)	(26,378)	(51,707)
Creditors: amount falling due in more than one year	-	-	-
	<u>441,664</u>	<u>54,351</u>	<u>496,015</u>

THE FROGLIFE TRUST
NOTES TO THE FINANCIAL STATEMENTS
FOR YEAR ENDED 30 SEPTEMBER 2024

18b ANALYSIS OF NET ASSETS BETWEEN FUNDS-prior year

Group	Unrestricted	Restricted	Total 2023
	£	£	£
Tangible fixed assets	-	-	-
Current assets	424,681	110,545	535,226
Creditors: amount falling due within one year	(37,606)	(15,786)	(53,392)
Creditors: amount falling due ion more than one year	-	-	-
	<u>387,075</u>	<u>94,759</u>	<u>481,834</u>

Charity	Unrestricted	Restricted	Total 2023
	£	£	£
Tangible fixed assets	100	-	100
Current assets	389,601	110,545	500,146
Creditors: amount falling due within one year	(19,133)	(15,786)	(34,919)
Creditors: amount falling due ion more than one year	-	-	-
	<u>370,568</u>	<u>94,759</u>	<u>465,327</u>

19

RECONCILIATION OF NET MOVEMENT IN FUNDS TO NET CASH FLOW FROM OPERATING ACTIVITIES

	2024	2024	2023	2023
	Group	Charity	Group	Charity
	£	£	£	£
Net income / (expenditure) for the year	30,688	30,688	(90,303)	(90,303)
Adjustment for:				
Depreciation charges including loss on disposal	-	-	-	-
Interest from investments	(6,162)	(37,442)	(3,150)	(31,166)
(Increase) / Decrease in stocks	(21)	(21)	74	74
(Increase) / Decrease in debtors	(14,951)	(89,641)	(56,125)	(57,214)
(Decrease) / Increase in creditors	3,403	16,788	23,358	10,375
Net cash provided by/(used in) operating activities	<u>12,957</u>	<u>(79,628)</u>	<u>(126,146)</u>	<u>(168,234)</u>

20 ANALYSIS OF NET DEBT

Group	At 30	Cash Flow	Non Cash Flow	At 30
	September 2023			September 2024
Cash in hand	405,515	19,119	-	424,634
	<u>405,515</u>	<u>19,119</u>	<u>-</u>	<u>424,634</u>
Charity				
Cash in hand	240,438	(42,186)	-	198,252
	<u>240,438</u>	<u>(42,186)</u>	<u>-</u>	<u>198,252</u>

THE FROGLIFE TRUST
NOTES TO THE FINANCIAL STATEMENTS
FOR YEAR ENDED 30 SEPTEMBER 2024

21 ANALYSIS OF CASH AND CASH EQUIVALENTS	2024	2024	2023	2023
	Group	Charity	Group	Charity
	£	£	£	£
Cash at bank and in hand	424,634	198,252	405,515	240,438
Total cash and cash equivalents	<u>424,634</u>	<u>198,252</u>	<u>405,515</u>	<u>240,438</u>

22 RELATED PARTIES

There have been no related party transactions in the reporting period except those already addressed in note 9.

PROJECTS FOR THE END OF THE REPORT :

Leaping Forward for Dementia – London: through the support of a City Bridge Trust, we have continued to deliver sessions with people living with dementia on several green spaces in London.

London Blue Chain: we have started the delivery phase.

Peterborough, Fenlands & Scotland Green Pathways Scheme: have all continued to operate delivering outdoor nature focused session with vulnerable and/or disadvantaged children and young people.

Somerset Green Pathways for Life delivers sessions at three venues around Frome for people living with dementia.

Discovering Dewponds: Is in its final year of delivery and has met all the targets and has exceeded many of them.

Coalface to Wildspace Midlands: This project enters its final year. The habitat works are all completed, and it continues with its programme of public engagement.

Transforming Lives: Froglife Trainees: the project has successfully trained its second cohort of trainees in Reserve Nature management and volunteer engagement. The third cohort are now in training.

Amphibian Mortality: our partnership with the

Zoological Society of London, British Trust for Ornithology and RSPB has continued, with Froglife receiving reports of amphibian diseases and mortality.

Toads on Roads: we continue to co-ordinate the seasonal Toads on Roads patrols and analyse the data that they submit to us.

Reserve Management: we have continued with the management Hampton, Eye Green and Boardwalks Nature Reserves.

Research: This year entered and completed several applied research projects.

Social media/Enquiry Service: our social media engagement continues to rise particularly as we engage in new social media platforms. We have seen a drop in email enquiries, but these are now directed through social media.

Digital: we have continued to expand our digital outputs, this year creating statues with QR codes.

Website: we continue to update and maintain our website to a very high standard.

Froglife Ltd t/a Froglife Ecological Services (FES): FES has continued to grow and explore new areas of work for private contract work.



The Froglife Trust

*Leaping forward for amphibian
and reptile conservation*

Working together to save the species

