

**Ark T CENTRE
ANNUAL REPORT AND FINANCIAL STATEMENTS
FOR THE YEAR ENDED DECEMBER 2024**

CHARITY NUMBER: 1079495

**UNAUDITED FINANCIAL STATEMENTS
AND TRUSTEES ANNUAL REPORT**

**FOR THE YEAR ENDED
31 DECEMBER 2024**

CONTENTS	PAGE
General information	1
Trustees' Annual Report	2
Independent Examiner's report to the Trustees	24
Statement of Financial Activities	25
Balance Sheet	26
Notes to the financial statements	27

ARK T CENTRE

GENERAL INFORMATION

Registered charity name	Ark T Centre
Charity number	1079495
Principal & registered office address	The Venue 242b Barns Road Oxford OX4 3RQ
Trustees	Helen Morton (Chairperson) (resigned March 2024) Ivan Wise (appointed September 2023), Chairperson from March 2024) Sharon Evans (resigned Jan 2025) Dr Andrew Gant (resigned Nov 2024) Laura Jostins-Dean (resigned June 2024) Daniel Levy (Treasurer) Shakeel Marham (resigned Dec 2024) Donnia Reafat (appointed April 2024) Johanna Rice Hassan Elmi Sabriye
Accountants	SPX Oxford Ltd Peace House 19 Paradise Street Oxford OX1 1LD
Independent examiner	Caroline Webster FCA UHY Ross Brooke Suite I Windrush Court Abingdon Business Park Abingdon OX14 1SY
Bankers	CAF Bank 25 Kings Hill Avenue Kings Hill West Mailing Kent

www.Ark.T.org Instagram: @arktoxford Facebook: ArkTOxford

ARK T CENTRE

TRUSTEES' ANNUAL REPORT

FOR THE YEAR ENDED 31 DECEMBER 2024

STATEMENT FROM IVAN WISE, CHAIR OF TRUSTEES

2024 has been a year of change for Ark T. The challenges facing the charity sector remain considerable – from reduced funding opportunities to the rising cost of delivering vital services – yet Ark T has continued to respond with creativity, determination, and care.

This year brought a key moment in our leadership journey as we welcomed Catherine Flutsch as CEO in July. Catherine has quickly brought fresh perspective and energy to the role, while honouring the strong foundations laid by Tracey Schueler, who guided Ark T with skill and dedication through the post-pandemic years and into our current home at Templars Square. I would like to thank Tracey for her dedication and commitment.

I also wish to pay particular tribute to our staff and volunteers. Their ability to adapt, innovate, and stay rooted in our mission is what makes Ark T so valued in the community. I also thank our funders and partners, whose continued belief in our work enables us to keep providing spaces where people can connect, create, and belong.

The Trustees present their report together with the financial statements for the year ended 31 December 2024.

Ivan Wise

Chairperson, Ark T Centre

ARK T CENTRE

TRUSTEES' ANNUAL REPORT

FOR THE YEAR ENDED 31 DECEMBER 2024

STATEMENT FROM IVAN WISE, CHAIR OF TRUSTEES

2024 has been a year of change for Ark T. The challenges facing the charity sector remain considerable – from reduced funding opportunities to the rising cost of delivering vital services – yet Ark T has continued to respond with creativity, determination, and care.

This year brought a key moment in our leadership journey as we welcomed Catherine Flutsch as CEO in July. Catherine has quickly brought fresh perspective and energy to the role, while honouring the strong foundations laid by Tracey Schueler, who guided Ark T with skill and dedication through the post-pandemic years and into our current home at Templars Square. I would like to thank Tracey for her dedication and commitment.

I also wish to pay particular tribute to our staff and volunteers. Their ability to adapt, innovate, and stay rooted in our mission is what makes Ark T so valued in the community. I also thank our funders and partners, whose continued belief in our work enables us to keep providing spaces where people can connect, create, and belong.

The Trustees present their report together with the financial statements for the year ended 31 December 2024.

Ivan Wise

Chairperson, Ark T Centre

ARK T CENTRE

STATEMENT FROM CEO, Catherine Flutsch

2024 has been a year of profound change and transition for Ark T. I begin by sincerely thanking my predecessor, Tracey Schueler, who stepped down in July to relocate to London. Tracey led Ark T through a period of considerable challenge, leaving a deep and lasting legacy for the organisation.

I took over as CEO in July, leaving my legal career for my first role in the charity sector. I am grateful to the Trustees for the trust they have placed in me and for the privilege of leading this much-loved organisation. From the outset, my focus has been on bringing professionalism, analytical rigour, collaboration, and kindness to the role, and on listening with depth and intention to the voices of our community, our partners, and our team.

Our achievements in 2024 reflect that deep listening, alongside the exceptional commitment of Ark T's staff and volunteers, and the steadfast support of our funders. Our staff embody Ark T's values in all they do — bringing professionalism, skill, and compassion to their work. There is no Ark T without them, and society owes them a debt of gratitude. I also want to acknowledge the extraordinary contribution of our volunteers, whose generosity with their time, energy, and talents enables us to reach more people, run more activities, and create the warm, welcoming atmosphere that defines Ark T. We could not do what we do without them.

This year has been particularly difficult for charities across the UK. Many funding streams have narrowed or closed, and competition for what remains has intensified. In East Oxford, these pressures are compounded by entrenched generational poverty and stark inequalities in wealth, opportunity, and access — disparities that are especially visible in a city as divided as Oxford.

In this climate, we are profoundly grateful to the many funders who share our values and our belief in the power of creativity to transform lives, and who have shown their commitment through tangible support. Their investment is more than financial — it is an expression of trust in our mission, confidence in our team, and solidarity with the communities we serve. It is thanks to

ARK T CENTRE

their generosity that we have been able to sustain and grow our programmes, reach those most in need, and continue to provide spaces where creativity, connection, and hope can flourish.

The cost of living crisis has reduced opportunities for those without wealth to engage in arts and culture. This has been compounded by a wider international trend towards reduced empathy and shrinking commitments to humanitarian and cultural support. The rhetoric and policies of some global leaders have set a precedent that risks normalising the withdrawal of compassion at all levels of society. This pressure has real political consequences, restricting access to creative opportunities, and deepening social and economic divides. In this context, Ark T's creative spaces and programmes — which foster connection, nurture creativity and resilience, and build stronger communities — are not just valuable, they are essential.

Looking ahead, I remain hopeful. Every day, I see the transformative impact of creativity — in the confidence built, friendships formed, and sense of belonging that grows when people come together and create. Engaging with the arts fosters resilience, helping individuals and communities to face life's burdens with strength, connection, and optimism. With the dedication of our staff and volunteers, the commitment of our partners, and the generosity of our funders, I believe Ark T will not only meet the challenges ahead but emerge stronger, deepening our impact and extending our reach in 2025 and beyond.

Catherine Flutsch
CEO, Ark T Centre

ARK T CENTRE

STRUCTURE, GOVERNANCE, AND MANAGEMENT

Ark T's Structure

Ark T Centre is a registered charity (charity number 1079495) constituted as an unincorporated association and governed by its constitution. The charity operates as a public benefit entity as defined by FRS 102. Its principal charitable object is the advancement of education in the arts in the City of Oxford for the benefit of the local community.

Organisational Structure

Ark T is governed by a Board of Trustees, who are responsible for setting the charity's strategic direction, ensuring good governance, and monitoring performance. The Trustees meet regularly throughout the year and retain oversight of major decisions, budgets, and policies.

Day-to-day management is delegated to the Chief Executive Officer (CEO), who is supported by a senior leadership team covering programmes, operations, finance, and fundraising. Staff work across Ark T's venues in East Oxford to deliver creative programmes, community events, and partnership projects.

Volunteers play a vital role in extending Ark T's reach and capacity, contributing their time and skills to help run activities, support events, and create a welcoming environment for participants.

Decision-Making

The Board retains responsibility for major strategic and policy decisions, with delegated authority to the CEO for operational matters within approved budgets and policies. Designated trustee leads support specific areas such as finance, fundraising, and safeguarding, working closely with the CEO and relevant staff to ensure strong governance and oversight.

Trustee Recruitment and Induction

Trustees are recruited based on the skills, experience, and perspectives needed on the Board at any given time, ensuring a balanced mix across governance, finance, fundraising, arts,

ARK T CENTRE

community engagement, and safeguarding. Prospective trustees meet with the Chair, the CEO, and other trustees before their appointment is confirmed by a majority Board vote.

All trustees are required to provide a current DBS certificate and complete safeguarding training if not undertaken within the last two years.

Induction for new trustees includes an introduction to Ark T's governance framework, key policies and procedures, current strategic priorities, and the Charity Commission's guidance on trustee duties. Trustees also receive regular updates via e-bulletins from the Charity Commission and sector bodies to maintain awareness of relevant legal and regulatory developments.

Risk Management

The Trustees have a formal process for identifying, evaluating, and managing the major risks the charity faces, reviewed at least annually and more frequently when necessary. Key risks in 2024 included:

- The continuing cost-of-living crisis, which increases both the demand for services and pressure on income.
- The competitive and contracting funding environment.
- Safeguarding responsibilities in working with vulnerable children, young people, and adults.

Mitigation measures include diversification of income streams, robust financial controls, close monitoring of budgets and forecasts, strengthened partnership working, and rigorous safeguarding procedures.

OBJECTIVES

The charity's objective is the advancement of education in the Arts in the area of the City of Oxford and particularly in the area of Cowley, for the benefit of the local community, and in particular to provide facilities for the preparation and presentation of artistic works.

ARK T CENTRE

PUBLIC BENEFIT

The Trustees confirm that they have complied with the duty in section 4 of the Charities Act 2011 to have due regard to the public benefit guidance published by the Charity Commission in determining the activities undertaken by Ark T.

SUMMARY OF KEY ACTIVITIES, PROJECTS AND SERVICES

In 2024, Ark T provided free and low-cost creative programmes to over 9,500 engagements with people from East Oxford and beyond, including children, young people, and adults experiencing poverty, isolation, poor mental health, and other forms of disadvantage. Our work is open to all, but is particularly targeted towards those who face the greatest barriers to participation in the arts and community life.

The Art Nest and the Art Nest After School Club

The Art Nest is a therapeutic creative space at Orchard Meadow Primary School for children aged 6–11. Weekly sessions during school hours, with one after school club provide a calm and nurturing environment that helps children re-engage with learning and improve attendance. Each session blends storytelling, creative projects, and space for conversation, supporting children to explore feelings, build resilience, and develop positive connections with peers and school.

“The impact of Art Nest on our most vulnerable pupils cannot be overstated...We are immensely proud and grateful to offer this therapeutic resource, which is not only a crucial part of our school’s safeguarding and support systems but also a key contributor to the mental, emotional, and social development of our pupils. Art Nest continues to be a source of inspiration and pride for our school and community.”

Executive Principal, Orchard Meadow Primary School



The Art Nest



31

We ran 31 creative wellbeing sessions at a group called The Rookery for **parents**



212

We ran 212 **creative wellbeing sessions** for children aged 6 to 11 years old



82

We worked with 82 **children** from Orchard Meadow and Pegasus primary schools

September 2023 to July 2024

Creativity Changes Lives

Creativity Changes Lives is the name of a group of free creative wellbeing programmes and holiday provision for young people aged 6–18, offering safe, creative spaces where young people can explore identity, develop confidence, and build supportive friendships.



Case Study – Young Person: “If This Was A School, I’d Come To It”

I started coming to Ark-T in 2021 and kept coming because it was fun, creative, and helped me feel better. I was shy at first, but the staff were really kind and made me feel safe. We laughed, made art, and went on fun summer trips where everyone was kind and less judgmental than at school.

At Ark-T, we make our own plays from scratch—create the characters, name the story, set the scene. I once played a talking dog and a half-demon, half-human. We all get involved, try on costumes, and make decisions together. It’s fun and expressive—nothing like school.

Ark-T is a space where you’re free to be yourself. You don’t have to put your hand up, wear a uniform, or hide your feelings. If something’s wrong—like if your dog dies or someone upsets you—they give you time and space to deal with it. They help you feel better, not worse.

This place helped me grow in confidence, speak up for myself, and understand my emotions. You can come here feeling low and leave feeling joyful. It’s a place to heal, create, and just be you. If this was a school, I’d come to it.

ARK T CENTRE

Creativity Changes Lives - Creativity Camps

Creativity Camps are our free holiday camps for children aged 6–11 who are experiencing poverty or disadvantage. Running every school break (other than Christmas) at Ark T from 9:30am–3:30pm, the camps provide a safe and supportive environment where children can have nutritious food, play, create, and make friends while building confidence and resilience.

In 2024, we delivered 18 days of holiday provision, offering 15 free spaces per day for children receiving free school meals, plus 2 additional spaces for specialist education support.

“Fantastic provision for children.” – Oxfordshire County Council, 2024

- 80% of participants came from disadvantaged backgrounds.
- 78% of children reported feeling more confident after attending.
- 78% reported feeling more confident in their creativity
- 1,188 healthy breakfasts, snacks, and hot meals were cooked and shared.

Children attended weekly trips, gaining access to experiences they might not otherwise have.

One parent said; “My daughter was soooo happy at Ark T camp. She tried to cook all the recipes from the camp because she said she had the best food there, and one day she prepared pasta with tomato sauce for her dad for dinner. She was tired at the end of the day but full of emotions and happiness! Thank you so much for your great work.”

Creativity Camps

Our 18 days of holiday provision offer 15 free spaces per day for children who receive free school meals, 2 spaces are Specialist Education support spaces. Supported by Oxfordshire County Council, Better Mental Health, and private donors.



80%

Of the participants who attend our Creativity Camps come from disadvantaged backgrounds



78%

Of participants reported feeling more confident after attending our Creativity Camps



78%

Of participants reported feeling more confident in their creativity

2023 to 2024

Creativity Changes Lives - HerSpace Junior

HerSpace Junior is a free after-school art club for girls aged 6–11. Through playful projects, participants explore identity and wellbeing while building confidence and friendships. Feedback from parents and young people expressed greater self-confidence and stronger peer connections. 14 young people attended this group consistently over the year. One young person said *“I like that I can be myself here. It makes me feel happier about going to school.”* Another participant said; *“I didn’t know I could make something like this – it makes me proud.”*



Case Study: Creativity Changes Lives - “Ark T made me!”

Z is neurodiverse and experiences physical difficulties. They have been part of HerSpace Senior for two years, experiencing significant growth, confidence, and creative expression. When Z first joined, they found the environment challenging. In early sessions, they stayed close to a friend from school and rarely interacted with others. A structured plan for each creative activity helped Z settle in and express themselves. Over time, Z grew in confidence, moving from sitting quietly with a friend to engaging with the whole group. They now regularly lead activities, sharing their skills with enthusiasm. HerSpace Senior includes a news-sharing time where everyone is encouraged to speak. Z has used this space to discuss issues like homophobia, transphobia, and prejudice against

neurodivergent people, showing how they feel safe and empowered to use their voice.

Z’s creativity has flourished, with the group encouraging experimentation. They’ve developed a passion for crochet and sculpture, mediums through which they express deeply meaningful themes. Their creative voice is authentic and evolving.

Z values HerSpace Senior deeply, saying, “Ark T made me!” and describing the experience as “laughter therapy.” One session stands out: Z spent the time crafting miniature origami stars, turning them into beads for a necklace. After a moment of shared laughter, they smiled and said, “This is like laughter therapy!”

HerSpace Senior has become a place of belonging, joy, and self-expression—a space where creativity and community support personal transformation.

Creativity Changes Lives - HerSpace Senior

HerSpace Senior empowers young women aged 11–17 to use creativity as a tool for self-expression, leadership, and confidence. Weekly sessions provided a safe and supportive environment where participants could share experiences and develop new skills. 10 young women consistently took part across the year. Participants reported increased confidence in speaking up and stronger peer networks.

“It’s a space where we can be ourselves without judgment.”

ARK T CENTRE

Creativity Changes Lives - MySpace Online

We started the MySpace Online creative group in September 2024. It is the only provision that we are aware of created especially for young people aged 10–14 who are living with emotional based school avoidance (EBSA). Levels of EBSA are rising across the country with particularly high rates in Oxfordshire.

We provided weekly online creative sessions staffed by specialist staff. We sent each participant a beautiful box of art supplies and young people joined in with the creative activities in a low pressure environment, in their own homes, with all the necessary art supplies provided. This gave young people the opportunity to gently reengage with organised learning on their own terms.

“I like that I can join from home when school feels too hard.”

Creativity Changes Lives - Theatre Makers

Our Theatre Makers group guided young people devise plays from the ground up – inventing characters, writing scripts, and designing costumes together. The collaborative and playful process helped them to grow in confidence, resilience, and teamwork while expressing themselves creatively. One participant summed up the experience: *“If Ark T was a school, I’d come to it. You don’t have to put your hand up here, wear a uniform, or hide your feelings. They help you feel better, not worse.”*

Creativity Changes Lives - Youth Council

Our Youth Council, meeting once a week, offered young people a voice in shaping Ark T’s programmes. Participants developed leadership and advocacy skills, while influencing decisions about group activities and future projects.

The group created their own artworks to showcase in an exhibition for Artweeks, Oxfordshire’s county-wide arts festival. Their exhibition was promoted through the festival’s official publication and website, and the young people played an active role in curating and installing the display. Toward the end of 2024, we made the difficult decision to close our Youth Council due to lack of

ARK T CENTRE

funding. We are actively pursuing funding streams, and hope to reopen a new version of Youth Council in 2026.

Creativity Changes Lives - Printing the Elements

Our free Printing the Elements workshops gave young people the opportunity to experiment with printmaking techniques while exploring their own identity and creativity. Participants created original printed artworks, some of which were shared at our biannual groups art exhibitions that are open to the community to visit.



Creativity Changes Lives Groups

In 2024 we ran 5 free after school creative wellbeing groups. Including HerSpace Junior, HerSpace Senior, Theatre Makers, Youth Council, Printing the Elements and MySpace Online.

- We delivered **1278 hours** of free after school support
- We supported **73 young people**
- We ran **124 creative wellbeing sessions** after school

Community Lunches

We hosted monthly Community Lunches that brought around 40 people together each time — including families, older residents, people experiencing homelessness, and those living with dementia. More than just a free meal, these gatherings reduced isolation, built resilience, and created relationships that helped people face life's difficulties knowing they were not alone.

Each event combined a warm, shared lunch with creative activities, play sessions, and access to light-touch signposting through the attendance of representatives from our partner organisations.

ARK T CENTRE

Attendees were able to find support around benefits, debt, housing, dementia, mental health, and employment in an approachable and informal way.

A distinctive feature of the lunches was the programme of artistic workshops led by professional artists, museums, and galleries. Participants took part in craft sessions, dementia-friendly socials and games, bitesize talks, and hands-on creative wellbeing workshops. These ranged from textiles and quilting to storytelling, painting, and interactive activities inspired by local museum collections. In 2024, 99 people took part in these creative sessions, discovering new ways to express themselves, build confidence, and connect with others.

Over the year, we served 340 meals — 160 of them free on a pay-as-you-feel basis — and welcomed 87 parents and children into our Early Years Stay & Play sessions. Many participants told us how much the events lifted their spirits: *“The best thing about the event was how welcoming it was.”* Another simply said: *“It made my day.”*



435 PEOPLE ATTENDED OUR COMMUNITY LUNCHESES

“I am glad I came it has made my day”



340

Pay-as-you-feel meals served

160

Of the 340 meals served 160 Free Meals were served

27

Attended dementia support & advice services



87

Attended our Early Years play sessions

99

People attended one of our Creative Wellbeing sessions

56

Volunteers helped us

2024

ARK T CENTRE

Welcome Space

In October 2023, we opened a new community hub in Templars Square Shopping Centre, transforming an empty retail unit into a vibrant place for creativity, connection, and support. Originally called *the Hub*, it was renamed *the Welcome Space* in 2024 after our new CEO received feedback from local people, who suggested a name that better reflected warmth, safety, and inclusion.

With the help of volunteers and community partners, the once-yellow walls were brought to life, and the space quickly became a much-loved home for the local community. Open four days a week from 10am to 3pm, the Welcome Space offered a warm welcome to all — with free creative materials available every day, an early years play area with supported drop-ins, and a programme of workshops and groups.

Regular highlights included a weekly macramé drop-in, a monthly support group for families raising PDA autistic children, and a series of six community exhibitions. Each exhibition showcased local creativity, from textiles to large-scale collaborative artworks, and invited visitors to take part in free, hands-on activities.

The Welcome Space provided more than activities: it was warm in winter, cool in summer, and always clean, safe, and inclusive. This was particularly important for families and young people during school holidays, when opportunities for free creative activities in the Cowley area are limited.

In 2024, the Welcome Space was open for 900 hours and welcomed 1,437 visitors. People came not just for activities but to find friendship, respite, and a sense of belonging. As one visitor put it, *“This place is precious.”* Another shared, *“It makes me feel happy and comfortable,”* while a third summed it up simply: *“Love this place, I feel good here.”*



Exhibitions

During 2024, the Welcome Space hosted six exhibitions, each free to visit, which truly reflected local creativity and wellbeing themes. These ranged from displays of work made in our regular groups to curated shows by local artists and special projects that invited community interaction. All exhibitions encouraged visitors to respond, reflect, or even add their own creativity. They celebrated local voices, sparked conversations, and highlighted how art supports connection and wellbeing.

Some notable examples from 2024:

- Textiles Exhibition: One exhibition featured a giant, participatory loom where visitors could select fabrics and weave them into a collective piece. They were also invited to write a message, thought, or intention on their chosen fabric piece before adding it to the loom, making the work an evolving community tapestry.
- Everyday Oxford Exhibition: In collaboration with TORCH and the Museum of Oxford, we ran a creative writing and wellbeing course for adults. The participants produced an anthology of poems inspired by objects from the Museum’s collection. The associated

ARK T CENTRE

exhibition in the Welcome Space included the anthology works and an interactive segment—a creative writing loom—where visitors could respond to prompts and contribute their own threads.

Across all six exhibitions, themes touched on wellbeing, local environment, identity, and seasons, among others. Each exhibition included hands-on activities or interactive pieces so that visitors weren't just spectators but participants—writing, weaving, reflecting, or creating.

Festivals & Workshops

In 2024, Ark T shared creativity with the wider community through festivals, workshops and celebration events—low-barrier, welcoming spaces that helped people connect, relax and build confidence together.

We took creative wellbeing activities out across Oxfordshire, using art, music and hands-on making to create inclusive moments of connection. Highlights included Cowley Road Carnival, where 70 people joined our headdress-making workshop and 16 took part in the procession; Leys Festival, with around 60 participants in our creative activities; Offbeat Festival at the Old Fire Station, engaging 40 participants over two days; ROAR Festival, with a workshop for 12 people; and Science Together, where three workshops drew 45 attendees. We also welcomed over 100 visitors to our exhibition openings, celebrating community-made artwork. These events reduced isolation, sparked conversation and offered joyful entry points into creativity for all ages.

Alongside festivals, we ran a regular programme of free adult and family workshops designed to support wellbeing and strengthen community bonds. A particular strand was our creative writing workshops for adults, delivered in partnership with the University of Oxford and the Museum of Oxford. Sessions were a mix of bookable and drop-in, open to all skill levels, and focused on gentle, practical exercises that built confidence and encouraged self-expression. Work produced in workshops was shared at exhibition openings in the Welcome Space—turning personal creativity into a collective celebration, and deepening a sense of belonging.

ARK T CENTRE

Together, our festivals and workshops helped people feel less alone, reinforced local relationships and offered practical, creative ways to face life's difficulties—one conversation, one poem, one headdress, one shared moment at a time.

Venue Hire

At our venue on Barns Road, Ark T provides welcoming, flexible spaces that serve both the community and local organisations. By offering low-cost hire rates, we make it possible for grassroots groups, charities, and community members to access clean, safe, and well-maintained facilities for meetings, classes, celebrations, and events. These spaces reflect Ark T's values of creativity, inclusivity, and care—places where people can come together, build connections, and feel at home.

Venue hire also generates vital income that helps sustain Ark T's programmes. Every booking supports our wider mission: using creativity to improve wellbeing, strengthen resilience, and nurture community. In this way, our commercial activity at Barns Road is directly tied to social impact—ensuring that while our spaces are used by many, their benefit is felt even more widely across Oxford.

WHY OUR WORK MATTERS

Oxford is one of the most unequal cities in the UK, with sharp disparities in life expectancy, education, and income between its wealthiest and most disadvantaged communities. In this context, inclusive, high-quality arts education and creative community spaces are not a luxury — they are a lifeline. Without them, poverty and deprivation deepen, increasing the risks of poor mental health, disengagement from education, limited employment, and social isolation.

Arts education is central to our mission because it delivers more than creative skills — it builds confidence and resilience, fosters community, develops critical thinking, enhances communication, and encourages collaboration. These are the foundations for success in every area of life.

ARK T CENTRE

Ark T's programmes provide evidence-based, non-clinical interventions that use creativity and the arts to improve wellbeing, build confidence and resilience, and strengthen relationships — opening pathways to learning, employment, and active community participation. The benefits ripple outward: by enabling people to connect, express themselves, and grow, we reduce the need for costly crisis interventions in health, education, and social care, while strengthening community bonds. We are developing ways to measure the public money saved through our work — showing that investing in arts education is both socially transformative and economically sound.

Designed around evidence-based research

Our approach is informed by a substantial body of research demonstrating that engagement with the arts can:

- Reduce anxiety, stress, and depression while improving mood and self-esteem.
- Build resilience, giving people the skills and confidence to navigate life's challenges.
- Strengthen social connection and a sense of belonging, which are known protective factors against isolation and mental ill health.
- Enhance focus, problem-solving, and creativity — supporting learning and employability.
- Bridge divides by creating inclusive spaces where people from all backgrounds participate as equals.

We also integrate the Wellcome Trust's "Active Ingredients" for adolescent mental health into our youth programmes. This means we deliberately design activities to include:

- Quality social and cultural connection.
- Supportive adult relationships.
- Opportunities for self-expression and agency.
- Identity-safe environments.
- Play and meaningful creative activity.

These elements are embedded across our programmes for all ages, helping participants to thrive, adapt, and recover in the face of adversity.

Achievements Against Objectives: Our impact

ARK T CENTRE

The benefits of our work extend beyond individual participants to the wider community. By building stronger networks of support, fostering inclusive community spaces, and equipping people with the resilience to face life's challenges, Ark T helps to reduce demand on overstretched public services.

As the cost of living crisis continues and philanthropic funding contracts, the need for these community-led, evidence-based creative programmes has never been greater. Our work demonstrates that the arts are not an “extra” — they are a powerful and proven tool for building healthier, more connected, and more resilient communities.

FINANCIAL REVIEW

Income and Expenditure Overview

In 2024, Ark T received **£339,040** in total income and incurred **£306,870** in total expenditure, resulting in a surplus of **£32,170**.

Compared to 2023, this represents a **decrease** in income of **£12,696** and a **decrease** in expenditure of **£63,657**.

This year, we continued to diversify our income streams, with funding coming from a balanced mix of grants, venue hire, donations, and new income-generating activities. We also worked to strengthen relationships with existing funders and develop new partnerships, helping to protect our programmes from fluctuations in single income sources.

Statement of the Charity's Financial Position

As of 31 December 2024, Ark T held total funds of **£91,494**, of which **£26,959** were unrestricted and **£64,535** were restricted for specific purposes.

The charity remains committed to careful cost control and prudent financial management, ensuring that every pound is used effectively to deliver our mission.

Reserves Policy

ARK T CENTRE

Reserves are defined as unrestricted funds available to spend on any of Ark T's charitable purposes. Restricted income, grant balances, tangible fixed assets, and any investment funds are excluded from this calculation.

Reserves are held to:

- Cover unexpected spending requirements or operational costs.
- Bridge any shortfall in income from donations or grants.
- Manage any delays in receiving grant payments.
- Ensure we can fulfil all legal and contractual obligations.

Ark T's beneficiaries often face multiple disadvantages, including poverty, poor mental health, and social isolation. Many rely on our programmes for support, skills, and community connection. It is therefore essential that reserves are sufficient to maintain services if normal income were interrupted.

The Trustees have set a reserves policy of holding the equivalent of **three months** of general operating costs, including salaries. This policy and the reserve level are reviewed annually.

At the end of 2024, we held **£26,959** in unrestricted reserves, equivalent to **2.5 months** of operating costs. While this is below our target level, we are actively rebuilding reserves through increased fundraising, donor engagement, and encouraging contributions to unrestricted funds.

Principal Funding Sources and Application

In 2024, Ark T's principal funding sources were:

- **Grant funding** from trusts, foundations, and public bodies.
- **Donations** from individuals and community supporters.
- **Earned income** from venue hire, events, and workshops.

ARK T CENTRE

These funds were applied to delivering Ark T's core programmes, running our community and creative spaces, and meeting essential operational costs.

Investment Policy and Performance

Ark T does not currently hold investments. Any surplus funds are retained in a low-risk bank account to ensure security and immediate access.

Significant Financial Risks

The main financial risks in 2024 were:

- The challenging fundraising environment, with many funding streams closing or becoming more competitive.
- The ongoing cost of living crisis, which has increased demand for our services while putting pressure on our operating costs.
- Short-term grant funding cycles that make long-term planning more difficult.

We have mitigated these risks through prudent budgeting, diversifying income sources, strengthening relationships with funders, and maintaining strict cost controls.

FUTURE PLANS FOR 2025 AND BEYOND

Ark T will strengthen its roots and widen its reach — creating spaces where creativity, connection, and community can flourish for all.

In the year ahead, Ark T will focus on strengthening our foundations and amplifying our impact. We will refine our governance, direct people's talents where they have the greatest effect, and introduce new wellbeing initiatives for staff — because thriving teams create thriving communities.

We will work with an experienced fundraiser, explore new income streams, and shape our programmes with the community, ensuring they remain relevant, high-quality, and responsive to need.

ARK T CENTRE

Our reach will grow through stronger media and social media presence, bringing more high-quality arts to East Oxford and ensuring our voice is heard in decision-making spaces.

We will continue to provide community lunches enriched with creative experiences — building connection, resilience, and joy — and champion the arts as a transformative force for healthier, more connected communities.

THANK YOU

In 2024, Ark T was supported by many grant giving organisations, and individual donors, and we are deeply grateful to each of them for their belief in our mission and their investment in our work.

We would particularly like to acknowledge Garfield Weston, Mabs Mardulyn Charitable Trust, UK Youth, Wates Foundation, Oxford City Council, Oxfordshire County Council Holiday Activity Fund, The National Lottery, Children in Need, Oxfordshire Community Foundation, Oxfordshire Community and Voluntary Action and our major individual donors Rod Cooke, Tony and Judith Yarrow for their significant contributions to sustaining our programmes and core activity.

Your generosity has made it possible for us to reach those who need us most and to continue creating spaces where creativity, connection, and resilience can thrive.

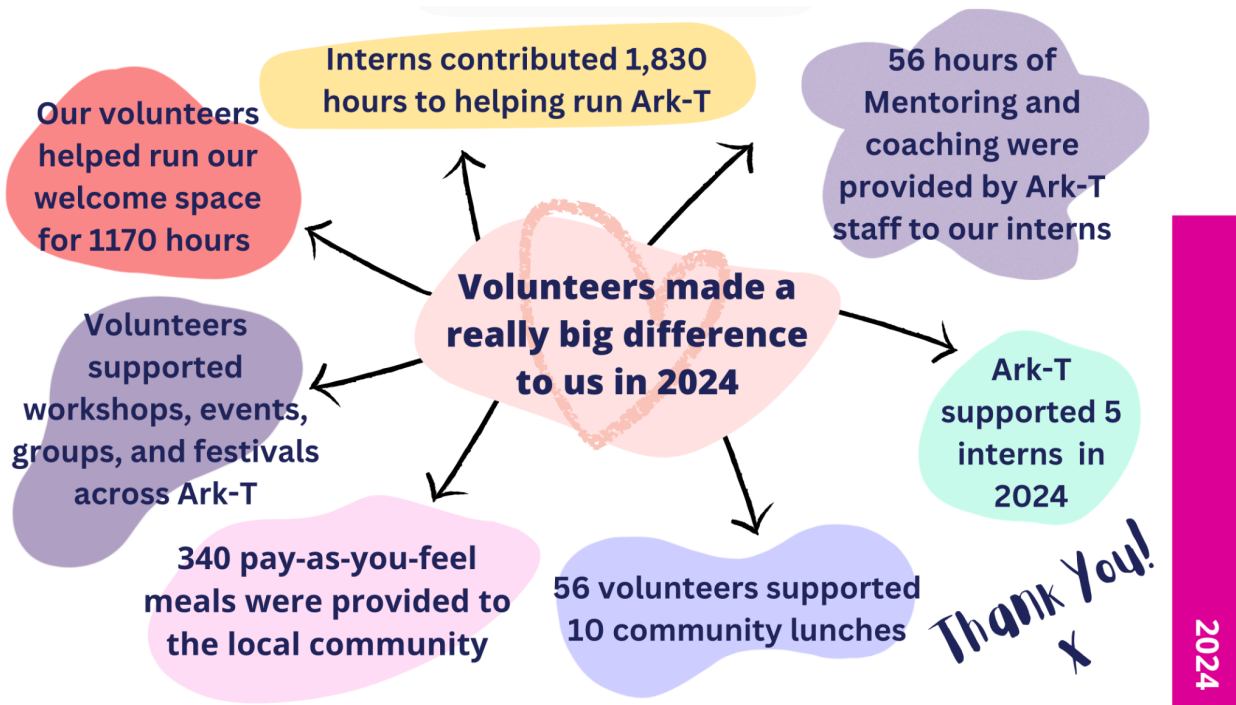
We are equally thankful to the many members of the public who have supported us with monthly and one-off donations. Every contribution — no matter the size — has a tangible impact on our work and gives us the courage to persevere in challenging times.

Our thanks also go to the community organisations, groups, and individuals who hire our spaces. Their bookings provide crucial unrestricted income while enabling a wide range of activities that improve health, wellbeing, and community connection.


Finally, we are proud to work alongside our valued delivery partners from across Oxfordshire's voluntary, cultural, education, and mental health sectors, including but not limited to *Flo's the Place in the Park*, *Waste2Taste*, *Oxford Community Action*, *No Vice Ice*, *Damascus Rose Kitchen*,

ARK T CENTRE

SOFEA, Oxford Mutual Aid, Oxford City Farm, the OX4 Early Years Alliance, Cultural Education Partnership, SAFE!, Donnington Doorstep, Orchard Meadow Primary School, Greyfriars Catholic School, Activate Learning, Modern Art Oxford, Film Oxford, GLAM, TORCH, UK Youth, and our partners on the mental health partnership including Response, Oxford Health, RAW, SOFEA, TRAX, BYHP, and Oxfordshire Youth. Together, we are building stronger communities, offering inclusive opportunities, and ensuring that creativity remains accessible to everyone, regardless of background or circumstance.



Approved by the Trustees on 15/10/28

Signed on their behalf by 

Ivan Wise

Chairperson

ARK T CENTRE

INDEPENDENT EXAMINER'S REPORT TO THE TRUSTEES OF ARK T CENTRE FOR THE YEAR ENDED 31 DECEMBER 2024

I report to the trustees on my examination of the accounts of the charity for the year ended 31 December 2024, which are set out in pages 25-36.

Responsibilities and basis of report

As the charity's trustees you are responsible for the preparation of the accounts in accordance with the requirements of the Charities Act 2011 (the Act).

I report in respect of my examination of your charity's accounts as carried out under section 145 of the Act and in carrying out my examination I have followed the Directions given by the Charity Commission under section 145 (5) (b) of the 2011 Act.

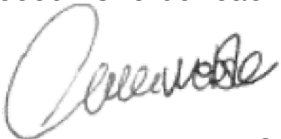
Independent examiner's statement

Since the charity's gross income exceeded £250,000 your examiner must be a member of a body listed in section 145 of the 2011 Act. I confirm that I am qualified to undertake the examination because I am a member of the institute of Chartered Accountants in England and Wales, which is one of the listed bodies.

I have completed my examination. I confirm that no matters have come to my attention in connection with the examination giving me cause to believe that in any material respect:

1. Accounting records were not kept in respect of the charity as required by section 130 of the Act; or
2. The accounts do not accord with those records; or
3. the accounts do not comply with the applicable requirements concerning the form and content of the accounts set out in the Charities (accounts and Report) Regulations 2008 other than any requirement that the accounts give a true and fair view which is not a matter considered as part of an independent examination.

I have no concerns and have come across no other matters in connection with the examination to which attention should be drawn in this report in order to enable a proper understanding of the accounts to be reached.



Caroline Webster FCA

Date.....16/10/2025.....

ARK T CENTRE

STATEMENT OF FINANCIAL ACTIVITIES FOR THE YEAR ENDED 31 DECEMBER 2024

		Unrestricted Funds £	Restricted Funds £	Total 2024 £	Unrestricted Funds £	Restricted Funds £	Total 2023 £
	Notes						
Income from:							
Donations and legacies	2	99,337	157,065	256,402	86,900	151,205	238,105
Charitable activities	3	7,446	9,963	17,409	4,828	14,316	19,144
Other trading activities	4	62,806	-	62,806	87,882	1,258	89,140
Other income		-	-	-	3,420	-	3,420
Investments		2,423	-	2,423	1,927	-	1,927
Total income		<u>172,012</u>	<u>167,028</u>	<u>339,040</u>	<u>184,957</u>	<u>166,779</u>	<u>351,736</u>
Expenditure on:							
Raising funds	5	8,774	229	9,003	6,924	520	7,444
Charitable activities	6	164,773	133,094	297,867	195,251	167,832	363,083
Total expenditure		<u>173,547</u>	<u>133,323</u>	<u>306,870</u>	<u>202,175</u>	<u>168,352</u>	<u>370,527</u>
Net income / -expenditure		- 1,535	33,705	32,170	- 17,218	- 1,573	- 18,791
Transfers between funds		2,508	- 2,508	-	- 2,738	2,738	-
Net movement in funds		<u>973</u>	<u>31,197</u>	<u>32,170</u>	<u>- 19,956</u>	<u>1,165</u>	<u>- 18,791</u>
Reconciliation of funds:							
Total funds brought forwards		25,986	33,338	59,324	45,942	32,173	78,115
Total funds carried forward		<u>26,959</u>	<u>64,535</u>	<u>91,494</u>	<u>25,986</u>	<u>33,338</u>	<u>59,324</u>

ARK T CENTRE

BALANCE SHEET FOR THE YEAR ENDED 31 DECEMBER 2024

	Note	2024		2023	
		£	£	£	£
FIXED ASSETS					
Tangible Assets	11		-		1,000
CURRENT ASSETS					
Debtors	12	20,587		12,757	
Cash at bank		79,142		83,160	
		99,729		95,917	
CREDITORS: Amounts falling due within one year	13		- 8,235		- 37,593
NET CURRENT ASSETS			91,494		58,324
NET LIABILITIES			91,494		59,324
FUNDS					
INCOME FUNDS					
Unrestricted Income funds	15		26,959		25,986
Restricted income funds			64,535		33,338
TOTAL INCOME FUNDS			91,494		59,324

The financial statements were approved by the Board of Trustees on 15/10/25
and are signed on behalf of the board by:

.....


ARK T CENTRE

NOTES TO THE ACCOUNTS FOR THE YEAR ENDED 31 DECEMBER 2024

1. Accounting Policies

The following accounting policies have been used consistently in dealing with items which are considered material in relation to the charity's accounts.

(a) Basis of Accounting

The address of the registered office is given in the charity information on page 1 of these financial statements. The nature of the charity's operations and principal activities are the advancement of education in the Arts in the area of the City of Oxford and particularly in the area of Cowley, for the benefit of the local community, and in particular to provide facilities for the preparation and presentation of artistic work.

The charity constitutes a public benefit entity as defined by FRS 102.

The financial statements have been prepared in accordance with Accounting and Reporting by Charities: Statement of Recommended Practice applicable to charities preparing their accounts in accordance with the Financial Reporting Standard applicable in the UK and Republic of Ireland (FRS 102) (effective 1 January 2019) - (Charities SORP (FRS 102)), the Financial Reporting Standard applicable in the UK and Republic of Ireland (FRS 102), the Charities Act 2011 and UK Generally Accepted Accounting Practice.

The Trustees recognise the current financial situation of Ark T is not ideal and that there are inevitable uncertainties about the charity's ability to continue as a going concern. The Trustees have met regularly and been engaged and informed throughout the period in scrutinizing and monitoring financial reports and budget forecasts to assess the impact on the activities of Ark T during the year and have agreed a number of actions to reduce costs and increase income which are already showing positive results. They are confident that the outcome of these actions will enable the charity to continue as a going concern and to rebuild the reserves over the next few years.

The financial statements have been prepared on a going-concern basis under the historical cost convention, modified to include certain items at fair value. The financial statements are presented in sterling which is the functional currency of the charity and rounded to the nearest £.

(b) Fund Accounting

Unrestricted funds are general funds that are available for use at the trustees' discretion in furtherance of the objectives of the charity.

Restricted funds are those donated for use in a particular area or for specific purposes, the use of which is restricted to that area or purpose.

(c) Income

Income from donations and grants is recognised where there is entitlement, probability of receipt and the amount can be measured with sufficient reliability.

Investment income, trading income and other income are recognised on a receivable basis.

ARK T CENTRE

NOTES TO THE ACCOUNTS (continued) FOR THE YEAR ENDED 31 DECEMBER 2024

(d) Expenditure

Expenditure is recognised on an accruals basis. Expenditure includes any Value Added Tax which is reported as part of the expenditure to which it relates.

- Expenditure on generating funds comprises costs associated with attracting income.
- Expenditure on charitable activities comprises those costs incurred by the charity in the delivery of its services. It includes both costs that can be allocated directly to such services and those costs of an indirect nature necessary to support them.

(e) Tangible fixed assets and depreciation

Tangible fixed assets are stated at cost less depreciation. Depreciation is provided at rates calculated to write off the cost of fixed assets, less their estimated residual value, over their expected useful lives on the following bases:

Improvements to Property	25% straight line
Fixtures and Fittings	25% straight line
Musical equipment	25% straight line

(f) Taxation

The charity is exempt from tax on income and gains falling within section 505 of the Taxes Act 1988 or section 252 of the Taxation of Chargeable Gains Act 1992 to the extent that these are applied to its charitable objects.

2. Donations and legacies

	Unrestricted Funds £	Restricted Funds £	Total 2024 £	Unrestricted Funds £	Restricted Funds £	Total 2023 £
Donations	12,589	20,020	32,609	41,672	60,785	102,457
Gift Aid	541	-	541	2,156	-	2,156
Grants	86,207	136,045	223,252	43,072	90,420	133,492
	99,337	157,065	256,402	86,900	151,205	238,105

3. Income from charitable activities

	Unrestricted Funds £	Restricted Funds £	Total 2024 £	Unrestricted Funds £	Restricted Funds £	Total 2023 £
Fees received	7,446	9,963	17,409	4,828	14,316	19,144
	7,446	9,963	17,409	4,828	14,316	19,144

ARK T CENTRE

NOTES TO THE ACCOUNTS (continued) FOR THE YEAR ENDED 31 DECEMBER 2024

4. Income from trading activities

	Unrestricted Funds £	Restricted Funds £	Total 2024 £	Unrestricted Funds £	Restricted Funds £	Total 2023 £
Café rental and venue hire	-	-	-	2,809	-	2,809
Rents receivable	62,806	-	62,806	85,073	1,258	86,331
	<u>62,806</u>	<u>-</u>	<u>62,806</u>	<u>87,882</u>	<u>1,258</u>	<u>89,140</u>

5. Expenditure on raising funds

	Unrestricted Funds £	Restricted Funds £	Total 2024 £	Unrestricted Funds £	Restricted Funds £	Total 2023 £
Generating funds	8,774	229	9,003	6,924	520	7,444
	<u>8,774</u>	<u>229</u>	<u>9,003</u>	<u>6,924</u>	<u>520</u>	<u>7,444</u>

6. Expenditure on charitable activities

	Unrestricted Funds £	Restricted Funds £	Total 2024 £	Unrestricted Funds £	Restricted Funds £	Total 2023 £
Staff	110,615	84,205	194,820	113,331	123,121	236,452
Premises	16,541	302	16,843	22,264	3,977	26,241
Office	9,484	915	10,399	21,776	2,222	23,998
Projects	6,045	30,339	36,384	2,973	33,089	36,062
Accountancy	14,792	-	14,792	12,693	-	12,693
Loss on disposal	-	-	-	16,452	-	16,452
Depreciation	1,000	-	1,000	1,342	-	1,342
Legal and professional	5,726	-	5,726	2,795	-	2,795
Other	570	17,333	17,903	1,625	5,423	7,048
Total charitable activities	<u>164,773</u>	<u>133,094</u>	<u>297,867</u>	<u>195,251</u>	<u>167,832</u>	<u>363,083</u>

7. Staff numbers

The average number of persons employed, analysed by activity was:

	2024	2023
Charitable activities	13	16

ARK T CENTRE

NOTES TO THE ACCOUNTS (continued) FOR THE YEAR ENDED 31 DECEMBER 2024

8. Staff costs

	2024	2023
	£	£
Wages	183,734	217,297
Social security costs	6,651	1,083
Pension costs	2,883	4,234
Training, DBS fees and other staff costs	4,068	4,068
	197,336	226,682

No employee earned £60,000 p.a. or more.

No trustee received any remuneration or expenses.

Remuneration paid to key management personnel amounted to £31,391 (2023: £35,892).

Pension costs for key management personnel amounted to £578 (2023: £864).

9. Related party transactions

There were no related party transactions in the current and prior year.

10. Tangible fixed assets

	Musical Equipment	Office and IT equipment	Total
	£		£
COST			
At 1 January 2024	1,329	4,027	5,356
Additions	-	-	-
Disposals	-	-	-
At 31 December 2024	1,329	4,027	5,356
DEPRECIATION			
At 1 January 2024	1,329	3,027	4,356
Charge for the year	-	1,000	1,000
Written back on disposals	-	-	-
At 31 December 2024	1,329	4,027	5,356
NET BOOK VALUE			
At 31 December 2024	-	-	-
At 31 December 2023	-	1,000	1,000

ARK T CENTRE

NOTES TO THE ACCOUNTS (continued) FOR THE YEAR ENDED 31 DECEMBER 2024

11. Debtors

	2024	2023
	£	£
Trade debtors	10,254	10,239
Other debtors	10,333	2,518
	<u>20,587</u>	<u>12,757</u>

12. Creditors: Amounts falling due within one year

	2024	2023
	£	£
Taxation and social security	3,193	2,930
Accruals and other creditors	2,859	4,382
Deferred income	-	20,000
Trade creditors	2,183	10,281
	<u>8,235</u>	<u>37,593</u>

ARK T CENTRE

NOTES TO THE ACCOUNTS (continued) FOR THE YEAR ENDED 31 DECEMBER 2024

13. Movements on restricted funds

	Balance at 1 January 2024	Income	Expenditure	Transfers	Balance at 31 December 2024
	£	£	£	£	£
Art Nest Donations	10,727	48,000	- 44,589	-	14,138
Arts Council	1,665	-	-	- 1,665	-
Artwork	- 265	9,425	- 9,160	-	-
OCF - Better Mental Health	-	13,268	- 3,322	-	9,946
Children In Need	4,425	9,865	- 12,791	- 1,499	-
DCMS	-	-	-	-	-
HAF	466	11,000	- 11,000	-	466
Household Support Grant (GFO)	-	1,000	- 15	-	985
Maggie Black	1,458	5,470	- 5,235	-	1,693
Martha 21	- 125	20	-	105	-
National Lottery	-	19,873	- 5,046	-	14,827
National Lottery / OX4 Food Crew	-	3,038	- 3,045	4	-
Oxford City Council	-	2,000	- 2,000	-	-
OCC Christmas Lights	-	2,000	- 2,000	-	-
Oxford City Council Culture Fund	1,441	-	-	-	1,441
Topaz	13,306	-	- 13,306	-	-
TORCH	-	1,800	- 800	-	1,000
TORCH / MOX	-	2,445	- 720	-	1,725
Science Together (University of Oxford)	-	9,621	- 9,621	-	-
University of Reading	240	3,203	- 3,990	547	-
Wates Foundation Limited	-	15,000	- 3,740	-	11,260
Well Together - OCVA/CFO	-	10,000	- 2,946	-	7,054
Total funds	33,338	167,028	- 133,323	- 2,508	64,535

ARK T CENTRE

NOTES TO THE ACCOUNTS (continued) FOR THE YEAR ENDED 31 DECEMBER 2024

Movement on restricted funds 2023

	Balance at 1 January 2023	Income	Expenditure	Transfers	Balance at 31 December 2023
	£	£	£	£	£
Art Nest Donations	5,462	59,750	- 54,485	-	10,727
Arts Council	1,668	-	- 3	-	1,665
Arts in the Element	-	890	- 961	71	-
Artswork	-	9,769	- 10,034	-	- 265
Children In Need	2,545	39,458	- 37,578	-	4,425
DCMS	3,004	-	- 3,722	718	-
HAF	823	15,843	- 16,200	-	466
Maggie Black	617	5,546	- 4,705	-	1,458
Martha 21	2,535	145	- 2,805	-	- 125
National Lottery / OX4 Food Crew	-	1,758	- 1,758	-	-
Oxford City Council Culture Fund	-	1,950	- 509	-	1,441
Oxford University Small Community Grant	1,250	-	- 1,250	-	-
Samworth	-	15,431	- 17,380	1,949	-
Topaz	14,269	-	- 963	-	13,306
TORCH	-	14,780	- 14,780	-	-
University of Reading	-	1,459	- 1,219	-	240
Total funds	32,173	166,779	- 168,352	2,738	33,338

ARK T CENTRE

NOTES TO THE ACCOUNTS (continued) FOR THE YEAR ENDED 31 DECEMBER 2024

14. Movement on unrestricted funds

	Balance at 1 January 2024	Income	Expenditure	Transfers	Balance at 31 December 2024
	£	£	£	£	£
General funds	25,986	172,012	- 173,547	2,508	26,959
	25,986	172,012	- 173,547	2,508	26,959

Movement on unrestricted funds 2023

	Balance at 1 January 2023	Income	Expenditure	Transfers	Balance at 31 December 2023
	£	£	£	£	£
General funds	29,490	184,957	- 185,723	- 2,738	25,986
Designated depreciation fund	16,452	-	- 16,452	-	-
	45,942	184,957	- 202,175	- 2,738	25,986

15. Analysis of net assets between funds

	Unrestrict ed	Restricted	Total
	£	£	£
Tangible assets	-	-	-
Current assets	15,194	84,535	99,729
Creditors within one year	11,765	- 20,000	- 8,235
Net assets	26,959	64,535	91,494

ARK T CENTRE

NOTES TO THE ACCOUNTS (continued) FOR THE YEAR ENDED 31 DECEMBER 2024

16. Art Nest Donations: Art Nest was funded by the Mabs Mardulyn Charitable Trust, Rod Cooke, Tony and Judith Yarrow.

Arts Council England: Funded materials for CCL groups.

Arts in the Elements: Funded by Oxford City Council, Cultural Education Partnership.

Artwork: Funded apprentices.

Children in Need: Funded our Creativity Changes Lives programme including term time sessions and holiday activities, aiming to increase the wellbeing, resilience and leadership skills of some of the most deprived children and young people in Oxford City.

DCMS: Funded our work with young people.

Holiday Activity Fund: Funded by Oxfordshire County Council.

Household Support Grant (GFO) : Good Food Oxfordshire provided funding for cooking supplies, enabling young people to develop practical cooking skills.

Lloyds Bank Foundation: Funded specialist consultants to work with Ark T across the areas of IT, Fundraising, Communications and coaching.

Maggie Black: Funded equipment for our young people's programmes as well as excursions to theatre and museums and installation costs for exhibitions.

Martha21: Funded work with young people.

National Lottery/OX4 Food Crew: Funded Community Hub Days.

Oxford City Council Culture Fund : Core funds Ark T as one of their Cultural Partners through the Big Ideas grant. They also funded us to be a part of their annual Christmas Lights Festival.

OCF - Better Mental Health : Oxfordshire Community Foundation funded CCL groups, camps and MySpace

Oxford University Small Community Grant: Funded our work with young people.

Samworth Foundation: CEO salary.

Science Together (University of Oxford) : The University of Oxford's Science Together Programme and the University of Oxford's Participatory Research Fund funded the Living Well Locally project.

Tony and Judith Yarrow: Funded the Summer Lights Festival and The Art Nest.

ARK T CENTRE

Topaz: Funded our work with young people.

TORCH (Oxford University): Partnered with us/funded a number of projects.

TORCH / MOX : TORCH Knowledge Exchange and Museum of Oxford funded the creative writing project

University of Reading: Funded our interns.

Wates Foundation: The Wates Foundation provided funding to support the salary of the Programmes Manager

Well Together - OCVA/CFO: Oxfordshire Community and Voluntary Action (OCVA) and Community First Oxfordshire (CFO) funded the After School Club at The Art Nest and the online group MySpace.