

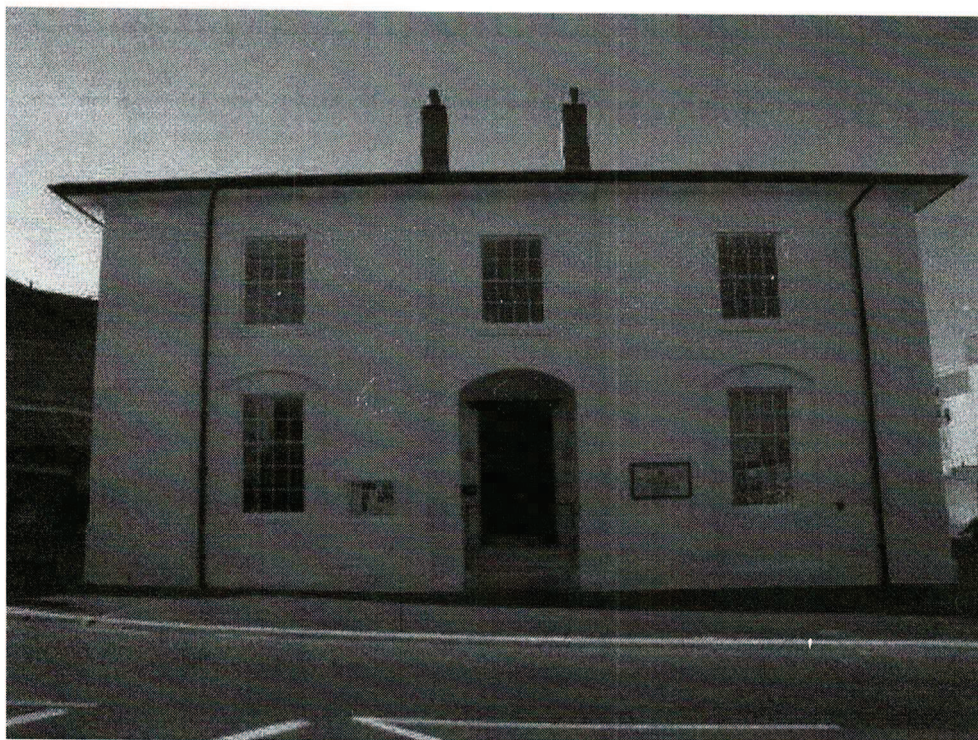
St Mary's Eltham Community Centres Association

Annual Report and Accounts 2024/25

(For the year ended 31 March 2025)

Registered Charity No. 1077280

Company Registration No. 03796671



Registered Office:

St Mary's 180 Eltham High Street, Eltham, London, SE9 1BJ

St Mary's Eltham Community Centres Association

Registered Office: 180 Eltham High Street, Eltham, London, SE9 1BJ

Contents

Trustees Report	Page 3
Public Benefit	Page 4
Governance	Page 5
Our Venues & Board of Trustees	Page 6
Risk Management	Page 7
Statement of Trustees Responsibilities	Page 8
Independent Examiners Report	Page 9
Financial Statements	Page 10 - 20

Board of Trustees' 2024/25 report

The Board is pleased to report increased revenue from both affiliated and private bookings, despite increased costs in many areas. The financial year ended with 37 Affiliated Groups and 58 regular private hire groups.

The annual open day, held in September 2024, was officially opened by the Mayor of the Royal Borough of Greenwich. The event featured a Macmillan Coffee morning which raised £188.33. Groups who attended included Eltham Royal Trefoil Guild, Eltham Knitters, The Priory Players, Progress Mutual Aid, U3A and Eltham Art Group. St Mary's hosted Saturday morning bookings at the same time which helped to create a lively welcoming atmosphere for this event.

Staffing in the Office changed to include a new Administrative Assistant and a new Deputy Centre Director. We would like to make special mention of our Finance Officer, Amanda Ball, who has been with us for 18 years, as of August 2025. During this transitional period her knowledge and dedication has been extremely beneficial to us all. We also hired a new member of staff for our Hall Assistant team in December 2024.

Board membership was enhanced by the appointment of the co-opted member, Shivani McCormack.

Enhancements to the buildings have also been undertaken; with partial clearance of the basement at St Mary's, professional cleaning of the carpeting (also at St Mary's) and the partial refurbishment of the kitchen at Progress Hall. The Association also started running free music events from January 2025 at St Mary's. These events have been well attended and will continue in the new financial year, with support from the Ward Fund.

Future Outlook for the Financial Year 2025/26

The cost of employing staff at the Association is due to increase, in part because of changes to the London Living Wage and to employer National Insurance contributions. Office infrastructure costs are also expected to increase with investment to support the digital switch over from analogue phone lines to digital technology. We forecast an increase to most, if not all, costs to the Association and, in light of this, with reluctance, the Board implemented a 5% price increase from 01 April 2025. Affiliated hire charges remain extremely low, despite the increase, and the Association remains committed to providing low cost options for local community groups.

Our Chair, Bob Treacher, due to step down at the AGM after 6 years as Chair was unanimously voted to stay in post by the Board on 28 April 2025. To facilitate this decision the Articles of Association will need to be updated by

resolution and will require at least 75% of the members to vote in favour of the change. The 2024/25 AGM will be held at 4pm on Tuesday 14 October 2025.

Public benefit

All our activities are undertaken to further our charitable purposes for the public benefit. The Board has regard to the Charity Commission's guidance on public benefit throughout the year when approving St Mary's activities.

***Our mission** is to encourage community cohesion by helping to develop groups and activities which are open to all our community; providing affordable and welcoming venues; supporting and working with other local partners in order to contribute to our **vision** for Eltham which is a community that feels connected, is culturally vibrant and inclusive.*

St Mary's works towards achieving this mission as follows:

a) building community involvement / cohesion by:

- supporting existing groups and encouraging new groups which engage local people in educational, leisure, health and social welfare activities
- hosting family events - wedding receptions, parties and life celebrations
- hiring venues to local businesses, voluntary and public sector for meetings/ training
- supporting local democracy by providing accommodation for MP and Councillor surgeries, community consultations and polling stations for elections
- providing community signposting, advice and literature

b) working with local agencies to enhance the quality of life for Eltham residents. These include the Eltham Town Centre Partnership, NHS Greenwich, Active for Health and The Federation of Greenwich Community Centres

c) managing and having responsibility for internal maintenance and decoration, furnishing and security of five buildings under Tenancy at Will Agreements with the Royal Borough of Greenwich

d) contributing to local emergency recovery services by providing our buildings as emergency centres.

St Mary's Eltham Community Centres Association

Registered Office: 180 Eltham High Street, Eltham, London, SE9 1BJ

Governance

St Mary's Eltham Community Centres Association is a registered charity and a company limited by guarantee.

Registered charity number: 1077280

Registered company number: 03796671

Registered office: St Mary's Community Centre, 180 Eltham High Street, Eltham, London SE9 1BJ

Accountants: Michael Adamson & Co., 9 Thorndon Park Close, Leigh on Sea, Essex SS9 4RH

Our bankers:

Unity Trust Bank
Four Brindleyplace
Birmingham
B1 2JB

Aldermore Bank
Apex Plaza
Forbury Road
Reading
RG1 1AX

United Trust Bank
One Ropemaker Street
London
EC2Y 9AW

Cambridge & Counties Bank Limited
Charnwood Court
5b New Walk
Leicestershire
LE1 6TE

Redwood Bank
Suite 101 The Nexus Building
Broadway
Letchworth Garden City
Hertfordshire
SG6 3TA

The purpose of St Mary's is set out in our Articles as follows:

(a) To promote for the benefit of the people of the area without distinction of sex, sexual orientation, race, age, disability or of political, religious or other opinions, by associating together those people, the local authorities, voluntary and other organisations in a common effort to advance education, citizenship, community development and social cohesion and to provide facilities for recreation, leisure and community activity with the objective of improving the conditions of life for those people.

St Mary's Eltham Community Centres Association

Registered Office: 180 Eltham High Street, Eltham, London, SE9 1BJ

(b) To establish, or secure the establishment of, community centres and to maintain and manage these whether alone or in co-operation with any local authorities or other persons or bodies in furtherance of these objectives.

Our venues

St Mary's Community Centre, 180 Eltham High Street, Eltham SE9 1BJ
Anstridge Hall, Anstridge Road, Eltham SE9 2LL
Flintmill Hall, Flintmill Crescent, Kidbrooke SE3 8LU
Lionel Road Hall, 540 Westhorpe Avenue, Eltham SE9 6DH
Progress Hall, Admiral Seymour Road, Eltham SE9 1SL

Board of Directors

Under St Mary's Articles, which govern the relationship between the Board of Directors and members, and subject to certain matters which are reserved to members who attend the Annual General Meeting (AGM), the St Mary's Board holds all the charity's powers and authorities.

Board of Directors/Trustees 2024/25

Mr Bob Treacher, Chair, Affiliated Group member
Mrs Marian McGuigan, Vice Chair, Affiliated Group member
Mrs Milena Mitova, Treasurer, Independent member
Ms Julia Gale, Independent member
Mrs Bee Twidale, Affiliated member
Mr Timothy Crossley, Affiliated Member
Ms Brenda Lobo, Affiliated Member
Mrs Shivani McCormack, Independent member

Patron: Mrs Judy Smith MBE

Risk management

The Trustees actively review the major risks which St Mary's faces on a regular basis and believe maintaining reserves at current levels, combined with an annual review of the controls over key financial systems, will provide sufficient resources in the event of adverse conditions.

The Trustees are satisfied adequate Health and Safety and Risk Management policies and procedures, Employers and Public Liability Insurance are in place.

The Trustees have also examined other operational and business risks faced by the charity and it can be confirmed there are established systems in place to mitigate any significant risk.

Independent examiners

A resolution proposing Michael Adamson and Co. to be re-appointed as independent examiners of the charity for the year 2024/25 was put to the membership at the 2023/24 Annual General Meeting and unanimously agreed.

Small company special provisions

The report of the Board of Trustees has been prepared in accordance with the Charities SORP (FRS 102) and with the Charities Act 2011.

Financial Review

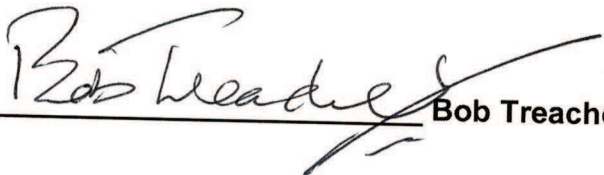
St Mary's activity for the year 2024/25 ended with a profit of £17,178. This is due in the main to unspent grant funding received from the Greenwich Neighbourhood Growth Fund for the front doors at Progress Hall.

St Mary's Reserves are detailed on p17 and stood at £375,537. at the year end. We have a Reserves Policy subject to regular review and maintain funds for the provision of sick pay, building maintenance, designated funds and for the loss of grant income and funding of projects not possible from income generated. We also make provision for a staff redundancy fund in the event of unforeseen detrimental loss of income.

The Trustees have every confidence in the reported accounts for 2024/25.

Approval

This report was approved by the Board of Trustees and signed on its behalf on ~~1 September~~ 2025.



Bob Treacher, Chair



Marian McGuigan, Vice Chair

Statement of Trustees' responsibilities

The Trustees are required by law to prepare financial statements for each year which give a true and fair view of the financial activities of St Mary's and its financial position at the end of the year.

In preparing those financial statements the Trustees are required to:

1. Select suitable accounting policies and apply them consistently;
2. Make judgements and estimates that are reasonable and prudent;
3. State whether policies adopted are in accordance with the Charities Act 2011 and with applicable accounting standards and statements of recommended practice, subject to any material departures disclosed and explained in the financial statements;
4. Prepare the financial statements on a going concern basis unless it is inappropriate to assume the charity will continue in operation.

Report of the Independent Examiners to the Members St Mary's Eltham Community Centres Association

We have examined the financial statements on pages 10 to 20 for the year ended 31 March 2025, which have been prepared under the accounting policies set out on page 14.

Respective responsibilities of the trustees and examiners

The charity's trustees are responsible for the preparation of the accounts. The charity's trustees consider that an audit is not required for this year under section 144 of the Charities Act 2011 (the Charities Act) and that an independent examination is needed.

It is our responsibility to:

- * examine the accounts under section 142 of the Charities Act;
- * to follow the procedures laid down in the general Directions given by the Charity Commission under section 145(5)(b) of the Charities Act; and
- * to state whether particular matters have come to our attention.

Basis of independent examiners' report

Our examination was carried out in accordance with the General Directions given by the Charity Commissioners. An examination includes a review of the accounting records kept by the charity and a comparison of the accounts presented with those records. It also includes consideration of any unusual items or disclosures in the accounts, and seeking explanations from you as trustees concerning any such matters.

The procedures undertaken do not provide all the evidence that would be required in an audit and consequently we do not express an audit opinion on the view given by the accounts.

Independent examiners' statement

In connection with our examination, no matter has come to our attention:

1. which gives us reasonable cause to believe that in any material respect the requirements
 - (a) to keep accounting records in accordance with section 130 of the Charities Act; and
 - (b) to prepare accounts which accord with the accounting records and to comply with the accounting requirements of the Act, have not been met; or
2. to which, in our opinion, attention should be drawn in order to enable a proper understanding of the accounts to be reached.



Michael Adamson and Co
Chartered Accountants

5 Thorndon Park Close
Leigh on Sea
Essex SS9 4RH

Date: 4/01/2025

St Mary's Eltham Community Centres Association
Statement of Financial Activities
for the year ended 31 March 2025

	Note	Unrestricted funds	Designated funds	Restricted funds	Total 2025	Total 2024
		£	£		£	£
Income and expenditure						
Incoming resources						
Income from use of facilities and catering	4	256,758	-	-	256,758	230,038
Grants and donations receivable	2	-	-	32,042	32,042	17,500
Investment income	3	12,517	-	-	12,517	12,532
Total incoming resources		<u>269,275</u>	<u>-</u>	<u>32,042</u>	<u>301,317</u>	<u>260,070</u>
Resources expended						
Cost of generating funds						
Direct charitable expenditure	5	261,206	-	22,183	283,389	251,042
Governance costs	6	750	-	-	750	750
Total expenditure		<u>261,956</u>	<u>-</u>	<u>22,183</u>	<u>284,139</u>	<u>251,792</u>
Net incoming resources for the year		<u>7,319</u>	<u>-</u>	<u>9,859</u>	<u>17,178</u>	<u>8,278</u>
Reconciliation of movement of funds						
Net incoming resources before other recognised gains - net movement in funds	7	7,319	-	9,859	17,178	8,278
Transfers		482	(469)	(13)	-	-
Total funds brought forward		155,238	189,074	14,047	358,359	350,081
Total funds carried forward		<u>163,039</u>	<u>188,605</u>	<u>23,893</u>	<u>375,537</u>	<u>358,359</u>
Allocation of assets						
Tangible assets		-	4,217	114	4,331	4,813
Current assets		174,301	184,388	23,779	382,468	362,668
Current liabilities		(11,262)	-	-	(11,262)	(9,122)
		<u>163,039</u>	<u>188,605</u>	<u>23,893</u>	<u>375,537</u>	<u>358,359</u>

The net incoming resources for the year represents the total recognised gains for the period.

None of the charity's activities were acquired or discontinued during the year.

The attached notes form part of the accounts

St Mary's Eltham Community Centres Association
Comparative Statement of financial activities
for the year ended 31 March 2024

	Note	Unrestricted funds	Designated funds	Restricted funds	Total 2024
		£	£		£
Income and expenditure					
Incoming resources					
Income from use of facilities and catering	4	230,038	-	-	230,038
Grants and donations receivable	2	-	-	17,500	17,500
Investment income	3	12,532	-	-	12,532
Total incoming resources		242,570	-	17,500	260,070
Resources expended					
Cost of generating funds					
Direct charitable expenditure	5	233,528	-	17,514	251,042
Governance costs	6	750	-	-	750
Total expenditure		234,278	-	17,514	251,792
Net incoming resources for the year		8,292	-	(14)	8,278
Statement of other recognised gains and losses					
Net incoming resources before other recognised gains - net movement in funds	7	8,292	-	(14)	8,278
Transfers		520	(520)	-	-
Total funds brought forward		146,426	189,594	14,061	350,081
Total funds carried forward		155,238	189,074	14,047	358,359
Allocation of assets					
Tangible assets		-	4,686	127	4,813
Current assets		164,360	184,388	13,920	362,668
Current liabilities		(9,122)	-	-	(9,122)
		155,238	189,074	14,047	358,359

The net incoming resources for the year represents the total recognised gains for the period.

None of the charity's activities were acquired or discontinued during the year.

The attached notes form part of the accounts

St Mary's Eltham Community Centres Association
Balance Sheet
as at 31 March 2025

	Notes	2025 £	2024 £
Fixed assets			
	9	4,331	4,813
Current assets			
Debtors	10	12,434	9,226
Cash at bank and in hand		370,034	353,442
		<u>382,468</u>	<u>362,668</u>
Creditors: amounts falling due within one year			
	11	(11,262)	(9,122)
Net current assets		<u>371,206</u>	<u>353,546</u>
Net assets		<u>375,537</u>	<u>358,359</u>
Reserves			
Accumulated fund	12	375,537	358,359
		<u>375,537</u>	<u>358,359</u>

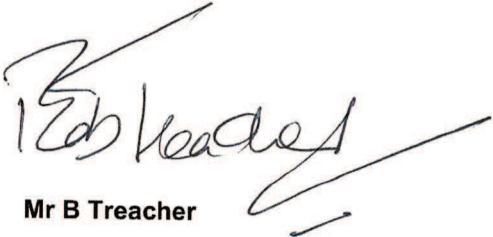
The board of trustees are satisfied that the company is entitled to exemption from the requirement to obtain an audit under section 477 of the Companies Act 2006 and that members have not required the company to obtain an audit in accordance with section 476 of the Act.

The board of trustees acknowledge their responsibilities for complying with the requirements of the Companies Act 2006 with respect to accounting records and the preparation of accounts.

The accounts have been prepared in accordance with the provisions in Part 15 of the Companies Act 2006 applicable to companies subject to the small companies regime.

Approved by the board of trustees on 1 September 2025
and signed on their behalf


Mrs M Mitova


Mr B Treacher

The attached notes form part of the accounts

St Mary's Eltham Community Centres Association
Cash Flow Statement
for the year ended 31 March 2025

	Notes	Total funds 2025 £	Total funds 2024 £
Net cash generated from operating activities	13	4,075	(3,850)
Cash flows from investing activities			
Interest received	3	12,517	12,532
Purchase of fixed assets		-	-
Change in cash and cash equivalents in the period		<u>16,592</u>	<u>8,682</u>
Cash and cash equivalents brought forward		353,442	344,760
Cash and cash equivalents carried forward		<u>370,034</u>	<u>353,442</u>
Consisting of:			
Cash at bank and in hand		<u>370,034</u>	<u>353,442</u>

The attached notes form part of the accounts

St Mary's Eltham Community Centres Association
Notes to the Accounts
for the year ended 31 March 2025

1 Accounting policies

Basis of preparation of accounts

The financial statements have been prepared under the historical cost convention, and are in accordance with the Statement of Recommended Practice: Accounting and Reporting by Charities preparing their accounts in accordance with the Financial Reporting Standard applicable in the UK and Republic of Ireland (FRS 102) effective 1 January 2019 and with the Charities Act 2011.

The charity constitutes a public benefit entity as defined by FRS 102.

Fund Accounting

- Unrestricted funds are available for use at the discretion of the trustees in furtherance of the general objectives of the charity
- Restricted funds are subjected to restrictions on their expenditure imposed by the donor
- Designated funds are unrestricted funds held in contingency

Incoming resources

Voluntary income and donations are included in incoming resources when they are receivable, except when the donors specify that they must be used in future accounting periods or donors conditions have not been fulfilled, then income is deferred. The income from fees is recorded gross.

Grants receivable

Grants receivable are recorded on the accruals basis

Resources expended

Resources expended are included in the Statement of Financial Activities on an accruals basis, inclusive of any VAT which cannot be recovered.

Expenditure which is directly attributable to specific activities have been included in these cost categories. Where costs are attributable to more than one activity, they have been apportioned across the cost categories on a basis consistent with the use of these resources.

Depreciation

Tangible fixed assets are stated at cost less depreciation.

Depreciation is provided on all fixed assets at rates calculated to write off the cost over their useful economic lives as follow:

Furniture and equipment	10% reducing balance
-------------------------	----------------------

Governance costs

Governance costs include those costs associated with meeting the constitutional and statutory requirements of the charity and include the independent examiner's fees and costs linked to the strategic management of the charity.

Value added tax

Value added tax is not recoverable by the charity, and as such is included in the relevant cost in the Statement of Financial Activities.

Pensions

The company operates a defined benefit contribution scheme operated by the Royal Borough of Greenwich. Under FRS 102, as this is a multi-employer scheme and it is not possible to identify the share of the underlying assets and liabilities belonging to the charity, the scheme is treated as a defined contribution pension scheme for the purposes of the accounts. Contributions are charged to the profit and loss account as they become payable in accordance with the rules of the scheme.

St Mary's Eltham Community Centres Association
Notes to the Accounts
for the year ended 31 March 2025

Financial instruments

Basic financial assets and liabilities are initially recognised as the amount receivable or payable including any related transaction costs and subsequently under the effective interest method. There are no non-basic financial instruments.

2 Grants receivable and donations

	<u>Restricted</u> <u>funds</u>	<u>Unrestricted</u> <u>funds</u>	<u>2025</u>	<u>2024</u>
	£	£	£	£
General (page 19)	32,042	-	32,042	17,500
	<u>32,042</u>	<u>-</u>	<u>32,042</u>	<u>17,500</u>

3 Investment income

	<u>Restricted</u> <u>funds</u>	<u>Unrestricted</u> <u>funds</u>	<u>2025</u>	<u>2024</u>
	£	£	£	£
General (page 19)	-	12,517	12,517	12,532
	<u>-</u>	<u>12,517</u>	<u>12,517</u>	<u>12,532</u>

4 Other incoming resources

	<u>Restricted</u> <u>funds</u>	<u>Unrestricted</u> <u>funds</u>	<u>2025</u>	<u>2024</u>
	£	£	£	£
General (page 19)	-	256,758	256,758	230,038
Media Resources (page 20)	-	-	-	-
	<u>-</u>	<u>256,758</u>	<u>256,758</u>	<u>230,038</u>

5 Direct charitable expenditure

	<u>Restricted</u> <u>funds</u>	<u>Unrestricted</u> <u>funds</u>	<u>2025</u>	<u>2024</u>
	£	£	£	£
General (page 19)	22,170	261,206	283,376	251,028
Media Resources (page 20)	13	-	13	14
	<u>22,183</u>	<u>261,206</u>	<u>283,389</u>	<u>251,042</u>

6 Governance costs

	<u>Restricted</u> <u>funds</u>	<u>Unrestricted</u> <u>funds</u>	<u>2025</u>	<u>2024</u>
	£	£	£	£
General (page 19)	-	750	750	750
	<u>-</u>	<u>750</u>	<u>750</u>	<u>750</u>

St Mary's Eltham Community Centres Association
Notes to the Accounts
for the year ended 31 March 2025

7 Net movement in funds for the year

	<u>2025</u>	<u>2024</u>
	£	£
The net movement is after charging:		
Depreciation of tangible fixed assets	482	534
Independent Examiner's fee	750	750

8 Staff costs

No remuneration was paid to trustees. The staff costs of the remaining staff were:

	<u>2025</u>	<u>2024</u>
	£	£
Wages and salaries	187,187	177,682
Social security costs	8,710	7,471
Pension costs	32,444	29,969
	<u>228,341</u>	<u>215,122</u>

The average weekly number of staff employed, calculated as full time equivalents during the year was as follows:

	<u>2025</u>	<u>2024</u>
	FTE	FTE
Direct charitable work	7	7
Governance	-	-
	<u>7</u>	<u>7</u>

No employee received remuneration over £60,000 in the year.

Remuneration to key management personnel in the year amounted to £48,838 (including employer pension contributions of £5,329) (2024 : £68,813 (including employer pension contributions of £9,798)).

9 Tangible fixed assets

	Furniture and equipment General £	Furniture and equipment Media Resources £	Total £
Cost			
At 1 April 2024	42,013	7,922	49,935
At 31 March 2025	<u>42,013</u>	<u>7,922</u>	<u>49,935</u>
Depreciation			
At 1 April 2024	37,327	7,795	45,122
Charge for the year	469	13	482
At 31 March 2025	<u>37,796</u>	<u>7,808</u>	<u>45,604</u>
Net book value			
At 31 March 2024	<u>4,686</u>	<u>127</u>	<u>4,813</u>
At 31 March 2025	<u>4,217</u>	<u>114</u>	<u>4,331</u>

St Mary's Eltham Community Centres Association
Notes to the Accounts
for the year ended 31 March 2025

10 Debtors

	2025 £	2024 £
Trade debtors	12,434	9,226

11 Creditors : amounts falling due within one year

	2025 £	2024 £
Trade creditors	4,357	1,675
Other taxes and social security costs	3,255	3,109
Accruals	3,650	4,338
	<u>11,262</u>	<u>9,122</u>

12 Accumulated fund

	2025 £	2024 £
At 1 April 2024	358,359	350,081
Retained surplus	17,178	8,278
At 31 March 2025	<u>375,537</u>	<u>358,359</u>

St. Mary's meets statutory obligations to hold minimum reserves to cover 3 months running costs in the event of winding down the Association.

Accumulated fund 2024/25

	Restricted	Designated	Unrestricted
Statutory reserves	-	174,388	-
Long Term Sickness Fund	-	10,000	-
Development fund	-	-	-
Fixed Assets	-	4,217	-
Media Resources	114	-	-
Friends of St Mary's	-	-	-
General Reserve - general account balance	23,779	-	163,039
	<u>23,893</u>	<u>188,605</u>	<u>163,039</u>

Accumulated fund 2023/24

	Restricted	Designated	Unrestricted
Statutory reserves	-	174,388	-
Long Term Sickness Fund	-	10,000	-
Fixed Assets	-	4,686	-
Media Resources	127	-	-
Friends of St Mary's	-	-	-
General Reserve - general account balance	13,920	-	155,238
	<u>14,047</u>	<u>189,074</u>	<u>155,238</u>

St Mary's Eltham Community Centres Association
Notes to the Accounts
for the year ended 31 March 2025

13 Reconciliation of net movements in funds to net cash flow from operating activities

	2025	2024
	£	£
Net movement in funds	17,178	8,278
Add back depreciation	482	534
Less interest received	(12,517)	(12,532)
Decrease / (increase) in debtors	(3,208)	(5,347)
Increase / (decrease) in creditors	2,140	5,217
Net cash generated from operating activities	<u>4,075</u>	<u>(3,850)</u>

St Mary's Eltham Community Centres Association
General Income and Expenditure account
for the year ended 31 March 2025

	2025	2024
	£	£
Income from use of facilities and catering		
Affiliation fees	2,170	2,170
Hire fees - affiliated	33,375	26,596
Hire fees - other	215,599	193,462
Catering income	3,795	5,286
Sundry income	1,819	2,524
	<u>256,758</u>	<u>230,038</u>
Grants		
Restricted		
Royal Borough of Greenwich	<u>32,042</u>	<u>17,500</u>
Total grants	<u>32,042</u>	<u>17,500</u>
Investment income		
Interest receivable	12,517	12,532
Media Resources (page 20)	(13)	(14)
	<u>12,504</u>	<u>12,518</u>
Total income	<u>301,304</u>	<u>260,056</u>
EXPENSES		
Direct Charitable Expenses		
Catering expenses	494	1,015
Wages and salaries	195,897	185,153
Pension costs	32,444	29,969
Staff travel	387	1,078
Water Rates	2,509	2,414
Light and heat	22,440	14,426
Cleaning	8,534	3,011
Telephone and fax	2,562	2,297
Stationery, postage and printing	5,276	1,059
Sundry expenses	948	410
Bad debts	167	-
Repairs and maintenance	8,006	5,380
Depreciation	469	520
Insurance	1,668	1,668
Payroll fees	26	583
Advertising	1,549	2,045
	<u>283,376</u>	<u>251,028</u>
Governance costs		
Independent examiners fees	<u>750</u>	<u>750</u>
	<u>750</u>	<u>750</u>
Total expenses	<u>284,126</u>	<u>251,778</u>
Surplus for year	<u>17,178</u>	<u>8,278</u>

**St Mary's Eltham Community Centres Association
Media Resources Income and Expenditure account
for the year ended 31 March 2025**

	2025 £	2024 £
Income	<u>-</u>	<u>-</u>
Direct Charitable Expenses		
Depreciation	13	14
	<u>13</u>	<u>14</u>
(Deficit) for year	<u>(13)</u>	<u>(14)</u>