

Helen Arkell



Dyslexia Charity

Annual Report and Financial Statements

For the year ended 31 August 2021

Helen Arkell Dyslexia Charity

(a company limited by guarantee)

Registered Charity No. 1064646

Registered Company No. 3432423 (England and Wales)

Formerly known as: 'The Helen Arkell Dyslexia Centre'

Contents

	Page
Report of the Trustees	2 to 26
Report of the Independent Auditors	27 to 28
Statement of Financial Activities	29 to 30
Balance Sheet	31
Cash Flow Statement	32
Notes to the Cash Flow Statement	33
Notes to the Financial Statements	34 to 44

Helen Arkell Dyslexia Charity

Report of the Trustees for the year ended 31 August 2021

Charity information and reference details

Registered Charity Number	1064646
Registered Company Number	3432423 (England and Wales)
Patron	HRH Princess Beatrice
Vice-Patron	Susan Hampshire CBE
Trustees (Directors)	Michael-John Albert BCom (Hons), CA(SA), CA – Treasurer Laura Anthony BA (Hons), ATII - appointed 25.10.21 Tom Arkell Joanna Dunbar-Webb BA (Hons), LLB, Dip Psych, MA, CIPD – appointed 26.10.21 Tim Harrison Gary Hay BA (Hons), MBA – Chair Simon Hepher MRICS Jonathan Hetherington BA (Hons), MSc (Ed), QTS Geraldine Price PhD, MA (Special Education), BA, RSA Dip. SpLD, RSA Dip. TESL, AMBDA, SpLD APC Alison Sutton – appointed 25.10.21 Pete Watson BSc (Hons)
Chief Executive	Andy Cook MA (Cantab)
Registered Office	Helen Arkell Dyslexia Charity 24, West Street Farnham Surrey GU9 7DR
Web site	www.helenarkell.org.uk
Auditors	HPCA Ltd Chartered Accountants and Statutory Auditors Station House Connaught Road Brookwood Woking Surrey GU24 0ER
Bankers	Lloyds Bank, Farnham, Surrey

Report of the Chair of the Trustees

In line with charities across the country, 2020/21 has continued to present enormous challenges for Helen Arkell. Not least because, over the year, Covid lockdowns prevented us from delivering some of our core services for significant periods. The impact of that is discussed in more detail in the Treasurer's report (page 22).

It is therefore testament to the team at Helen Arkell, as well as our amazing supporters, that we emerged from the year in good shape. 2021 marked the 50th Anniversary of the Charity, a huge landmark which we were able to celebrate in a number of ways throughout the year, including the 50th Anniversary Helen Arkell Lecture delivered by Professor Maggie Snowling from Oxford University. It felt particularly fitting at this time for us to take stock and reflect on the huge influence of Helen Arkell herself, not only in creating the Charity but also for campaigning in the world of dyslexia. We are determined to carry this hard work forward with our vision to support more people in more ways, across the country.

I cannot detail everything in this short statement but want to highlight the fact that last year we set ourselves six key targets for the year – for example around growing numbers of people we support, fundraising and taking part in a nationwide project – each of which we managed to achieve in spite of the challenging environment.

In terms of our continued activity, 1,087 people received direct 1:1 support (assessments, tuition, coaching, consultations) during the year – an increase on the previous year. Another 1,000 children received support thanks to our participation in the National Tutoring Programme alongside other organisations in the field. In the meantime, over 1,000 people attended our courses, including children, parents, teachers, teaching assistants, workplaces and members of the public.

Our future strategy is also based upon our ability to deliver more of our services across the country, to people from all walks of life regardless of their ability to pay. I am therefore delighted to say that we continued to deliver an increased number of our services from our venues in London, Oxford and the West Country, in addition to our head office in Farnham - face to face support alone reached beneficiaries across 25 counties. We also delivered an increasing number of on-line services. And finally, we gave a record 163 bursaries at a value of more than £80,000. Given the constraints on our activity, this was a remarkable achievement and provides us with a solid platform to continue to develop in the future.

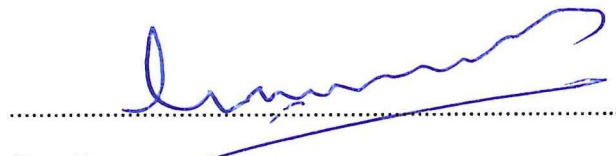
We also had significant success on the fundraising front, with £258,672 raised from donations and events, which is a record for the Charity in all its 50-year history. I would like to make special mention of The Aegis Charitable Trust for their donation of £300,000 towards three projects over the next two years. A portion of this donation is recognised within the above fundraising total, and the remainder is deferred in the balance sheet to future months when the projects will be completed. We thank all our donors and supporters in more detail throughout the pages of this report. We couldn't do it without you!

In terms of our people, a huge thank you once again goes to Andy Cook, our Chief Executive, and the whole team who worked tirelessly to keep delivering for those who so desperately need our support. We also thank our Patron, HRH Princess Beatrice, for supporting us throughout the pandemic and raising awareness of dyslexia in general. This year we are also delighted to welcome well-known actress and dyslexia advocate, Susan Hampshire CBE, as Vice-Patron of the Charity. Every member of the team has played their part in helping us to adapt and achieve such a favourable outcome.

Meanwhile, the Trustees have worked above and beyond in order to help steer the Charity through some challenging waters. Their skill and dedication has been impressive and vital, providing support and stability when it was most needed. However, the year also saw us reach out to secure some fresh skills to the Board. We received a huge amount of interest, reflecting the Charity's increasing recognition, and welcomed three new Trustees early in the following financial year. This will enable us to broaden and strengthen our leadership as we look to deliver our strategy for growth in the coming years.

Thanks above all once again must go to our amazing supporters, who have worked tirelessly throughout the year as well as contributing in generous amounts. Thank you all for helping to create such a strong platform from which Helen Arkell can grow and reach out in the future.

Finally, I make note of the fact that at time of signing these accounts, subsequent to year end, we successfully relocated our head office into Farnham town centre, to a rental property at 24, West Street. We look forward to delivering our mission from our new premises for many years to come.



Gary Hay

Chair of Trustees

25 May 2022

Report of the Trustees for year ended 31 August 2021

The Trustees who are also directors of the Charity for the purposes of the Companies Act 2006, present their report with the financial statements of the Charity for the year ended 31 August 2021. The Trustees have adopted the provisions of Accounting and Reporting by Charities: Statement of Recommended Practice applicable to charities preparing their accounts in accordance with the Financial Reporting Standard applicable in the UK and Republic of Ireland (FRS 102) (effective 1 January 2015).

Governing document

The Charity is controlled by its governing documents, comprising its Memorandum and Articles of Association, and constitutes a limited company, limited by guarantee, as defined by the Companies Act 2006.

Directors and Trustees

The Directors of a Charitable Company stand in place of the Trustees for the purposes of Charity Law, and throughout this report are collectively referred to as the Trustees. The Trustees at the date of this report and who served during the year are listed on page two.

No Trustees retired within the year.

The following trustees were appointed soon after the year-end:

Laura Anthony BA (Hons), ATII - appointed 25.10.21

Joanna Dunbar-Webb BA (Hons), LLB, Dip Psych, MA, CIPD – appointed 26.10.21

Alison Sutton – appointed 25.10.21

One fifth of the Trustees are obliged to offer their resignation at every 5th Annual General Meeting. This rule shall next apply at the AGM for the accounts to the year ending 2022.

Trustees are appointed based on having the necessary and relevant skills to offer help and guidance to the Chief Executive and staff of the Charity.

New Trustees undergo an induction programme to introduce them to the Charity, their legal obligations under charity and company law, the content of the Memorandum and Articles of Association, the Board decision-making process, the Strategic Plan and recent financial performance of the Charity. Trustees are encouraged to attend appropriate external training events where these will facilitate the undertaking of their respective roles, and to participate in events that are run by the Charity. We are satisfied that the trustee body is afforded ample training in order to fulfil its duties and responsibilities.

No Trustee has any beneficial interest in the company. All Trustees are members of the company and guarantee to contribute £1 in the event of winding up.

Each year, after due consideration, the Trustees approve a budget presented by management for income and expenditure for the coming year as well as reviewing the Charity's reserves in relation to its reserves policy. Trustees approve policies and monitor their execution through reports from management at quarterly Trustees' meetings.

The Trustees are responsible for setting the remuneration of the Chief Executive in the light of prevailing economic conditions.

About dyslexia

Dyslexia is a learning difficulty that primarily affects the skills needed for accurate and fluent reading, writing and spelling. Dyslexia can also affect 'working memory', cognitive processing and organisational skills. There are many other symptoms and no two people with dyslexia are the same. Dyslexia can range from mild to severe, and affects people regardless of intellectual ability. Dyslexia is highly hereditary, affecting 1 in 10 people in the UK.

Children and adults with unsupported dyslexia are more likely to suffer low self-esteem, low confidence, to have negative associations with education and achieve fewer qualifications, to become unemployed when leaving school, and to make negative life-choices. (People with dyslexia are twice as likely to end up in prison or young offender institutes).

Support

If correctly supported, people with dyslexia can thrive in life, particularly life after school, where their ability to see the world differently can be a positive asset. Famous, 'successful' dyslexics such as Richard Branson are good examples. The more such people speak openly about their dyslexia, the more their examples will serve to encourage others. Key dyslexic strengths are well-documented and it is becoming increasingly acknowledged that these strengths will become particularly valuable in tomorrow's workplace.

Our role

At Helen Arkell Dyslexia Charity we believe that the first step in helping people with dyslexia and other specific learning difficulties to maximise their opportunities, is to gain better self-understanding by means of specialist dyslexia assessments with personalised recommendations for appropriate ways forward. The second step is to implement these recommendations, ensuring the individual gains access to the extra help they need, either with one-off adjustments or programmes of on-going specialist support. The third step is to up-skill and educate teachers, classroom assistants, parents, employers and members of the public so that they are better able to provide support to people with dyslexia.

Outcomes for beneficiaries include:

- improved self-awareness, with better understanding of individual strengths and weaknesses
- improved self-empowerment
- improved access to practical specialist support and 'reasonable adjustments'
- improved self-confidence and mental well-being
- improved literacy and attitude to learning
- reduced frustration
- reduced anxiety
- improved life-opportunities

Currently, it is difficult for families from lower-income backgrounds to access the help they need, both because of availability of high quality service and because diagnostic assessments and specialist tuition are expensive.

At Helen Arkell Dyslexia Charity we aim to remove these barriers, helping dyslexic children and adults to thrive in today's world and prevent their talent from being wasted.

A key aim is to provide bursary-funded support to increasing numbers of beneficiaries from lower-income backgrounds. On average, a donation of £530 can provide an individual with the help they

need, to change their life for the better and find a new positive way forward that maximises their potential.

Where beneficiaries can afford to pay for the service, or feel able to make a contribution towards costs, this is accepted, as it means that restricted bursary funds can benefit more of those people who need it most.

Objects and activities

Our Objectives

The charitable objectives of the Charity, as set out in its Memorandum of Association, are:

- a) “to provide for the care, education and treatment of persons suffering from dyslexia or any other related specific learning disability”;
- b) “to further the education of the public about dyslexia and other related specific learning disabilities and to educate and train the public about the care, education and treatment of such persons”;
- c) “to carry out research into dyslexia and other related specific learning disabilities and to disseminate the useful results of such research”.

Our Vision

Our vision is of a day when people with dyslexia and other specific learning difficulties have the same opportunities as everyone else to achieve their goals.

Our Mission

Our mission is:

- i) to remove barriers to learning and life for people with dyslexia by providing expert, personal and life-changing support;
- ii) to deliver our services free of charge to people who could not otherwise afford them, wherever possible;
- iii) to cover every stage of life;
- iv) to encompass not just those with dyslexia but also teachers, parents and the wider community;
- v) to undertake research in order to advance our vision and strategy.

Our activities

We achieve our mission through the following main activities:

- i) by providing specialist consultations and assessments to children and adults to determine whether dyslexia or other related specific learning difficulties are playing a part in preventing them reaching their full potential. Advice is then provided to determine the best way forward for the individual

concerned. These life-changing sessions are conducted by Helen Arkell qualified specialist assessors and registered educational psychologists;

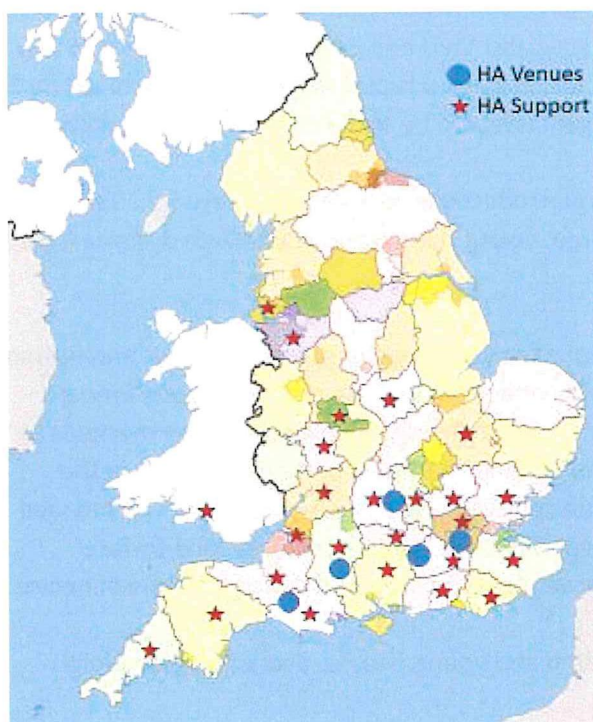
ii) by providing 1:1 coaching, tuition and skills-building to children and adults who have been identified as affected by dyslexia. These sessions are delivered by our qualified specialist staff;

iii) by providing specialist training to teachers, teaching assistants and other interested parties such that they become qualified to support children in schools and local communities. We are a registered training centre for teachers and teaching assistants wishing to specialise in the support of pupils with dyslexia and specific learning difficulties.

In addition, we:

- provide advice, help and teaching to parents whose children are/may be on the spectrum for dyslexia or other specific learning difficulties
- provide specialist dyslexia awareness training to workplaces who employ people with dyslexia
- provide specialist dyslexia awareness training to schools through in-service and other training days
- run a variety of specialist courses including touch typing courses for children with dyslexia, Saturday morning lectures and 'Supporting Learners' courses for teachers and teaching assistants; GCSE preparation courses and a variety of other courses for children, young people and adults with dyslexia, as well as for other interested parties who either work or live with someone with dyslexia.

Geographical spread



Our main operating base over recent decades has been near Farnham, close to the Surrey/Hampshire border, largely accessing people in the nearby counties.

In furtherance of our Strategic Plan, we have expanded on our Mission to access a much larger footprint. (See also Target 2, page 10).

There are now five venues at which beneficiaries may access face-to-face support, including our original base in Farnham, plus others in London, Salisbury, Oxford and most recently added this year, Yeovil.

Residents of 25 different counties accessed our face-to-face support in 2020/21.

In addition, many others accessed our online services from further afield.

Achievements and performance

Covid-19

Before reporting on the specific targets that we set ourselves at the start of the year, when the ongoing effects of Covid-19 were uncertain, it is important to emphasize that the challenges faced in the year ended 31 August 2021 were just as pronounced as in the previous year, with a further full lockdown in January/February 2021 and a partial lockdown in November 2020. Charitable activities and fundraising events were again affected, as were working arrangements. Once again, our ongoing response to the pandemic was necessarily a prime focus this year. The Chair's Report (page 3) and Treasurer's Report (page 22) outline the actions that were taken, and detail the effects upon the Charity's activities during the year.

In addition to reacting to the challenges of Covid-19, we also pushed ahead with all the targets we set ourselves last year, as far as was practically possible in the circumstances.

We now describe progress that was made this year in relation to the 'plans for the future period' that were detailed in last year's Annual Report and Financial Statements.

Our targets set last year were as follows:

Target 1: In line with our mission to remove barriers to learning and life for people with dyslexia by providing expert, personal and life-changing support, we aim to increase the numbers of people with dyslexia whom we help during the year ending August 2021, subject to Covid-19 lockdowns and restrictions.

Outcome:

Despite ongoing disruption caused by Covid-19, we directly assisted 1,087 people with dyslexia during the year (2020: 1,028) through our team of specialist staff and educational psychologists, by means of 1:1 assessments, consultations, coaching and tuition. It is pleasing to have supported more than 1,000 people, in a year when our sites were again affected by social distancing restrictions.

Even though Covid-19 lockdown restrictions were reintroduced in January and February 2021 we still managed to reach our target of helping more children, young people and adults with dyslexia than in the previous year.

During lockdowns, and also at other times throughout the year, coaching, consultations, and tuition sessions were again swapped to an online service, via video call. We also helped to push forward boundaries of knowledge and innovative best-practice by embracing newly recognised methods to undertake dyslexia assessments online. Although not suiting all clients, particularly those in the younger age groups and those with severe concentration issues, the video call system worked well for many. Once social-distancing restrictions allowed, those clients who required face-to-face services were welcomed to our Centre and regional venues with stringent safety measures in place.

86% of our beneficiaries during the year were children and young people, and 14% were adults.

Of the 1,087 people with dyslexia who came to us, we assisted a mix of boys, girls, men and women with a fairly even gender ratio of 53% females and 47% males.

Of our 1,087 beneficiaries, 767 received assessments and 320 received 1:1 tuition, coaching, skills-building and consultations. Our team of specialist tutors provided over 3,000 1:1 coaching sessions throughout the year.

Of those beneficiaries who were provided with assessments, 467 people were assessed by Helen Arkell Specialist Assessors and 300 were assessed by our team of educational psychologists.

During the year assessments were provided at the following venues:

67% at the Charity's main Frensham Centre

11% via video call

8% in situ in schools

6% at the Charity's Oxford venue

6% at the Charity's Southwark venue

1% at the Charity's Salisbury venue

1% at the Charity's Yeovil venue

Target 2: We aim to further increase our geographical reach and impact by increasing the numbers of beneficiaries who access our services via our network of regional hubs. In 2021 this will focus on increasing the capacity of existing hubs, rather than launching new hubs, and will be subject to any Covid-related lockdowns and restrictions that may continue into the new year.

Outcome:

We met this target by increasing both the numbers, and the percentage, of beneficiaries who accessed our services from other regions of the UK. The proportion of our regional clients increased to 33%, compared to 9% in the previous year, and actual numbers of regional beneficiaries increased to 253 (2020: 140). This was achieved through a combination of increasing the capacity of our existing hubs, increasing the use of video call, and opening up an additional venue, in Yeovil.

Our Oxford and London hubs continue to be based respectively at Prama House in Summertown, and John Keats Primary School in Southwark.

Our South West operations use the facilities at Sarum College, Salisbury and are now joined by the addition of our Yeovil venue, based at Nine Springs Health Centre.

With the benefit of our hub venues as well as our main Centre in Surrey, this year we succeeded in reaching a wider geographical area of the UK with face-to-face support, providing direct 1:1 dyslexia assistance to children and adults from 25 counties (see also Geographical Spread, page 8).

In addition, online consultations, tuition, coaching, skills-building and courses were delivered remotely to beneficiaries living all over the UK, and indeed overseas, using video call and webinar.

Target 3: We plan to provide bursary-funded specialist support to even more people with dyslexia from lower-income backgrounds in the year ending August 2021. Our intention is to help more than 140 people from lower-income backgrounds in this way, depending on the success of our fundraising activities and also depending on any Covid-related closures of our Centre and hubs in the coming year.

Outcome:

We are delighted to have met this target by quite some margin, as we provided bursary-funded support to 163 children and adults with dyslexia from lower-income backgrounds this year. A total of £84,495 of such support was provided to these 163 individuals (2020: £66,295 to 133 individuals).

In addition, another 102 parents of dyslexic children, from lower-income backgrounds, also benefitted from free places on bursary-assisted 'HELP Parents courses' during the year. On average, each of these bursary-assisted parents attended five in-depth workshops.

18% of beneficiaries who were assisted with 1:1 support through our bursary system were adults, typically out of work or on lower incomes and on benefits, who believed that dyslexia was preventing them from finding work or achieving the career success that they hoped for.

82% of recipients of our bursary-funded support during the year were children. In all cases, their families were already struggling to make ends meet financially, without also considering the extra requirement to source specialist support for their children, to address their suspected dyslexia. The majority of the children we supported through the bursary system were from single-parent families, typically with the parent or carer out of work, or on lower income, on a variety of benefits and in debt. We also supported a number of children who were in foster care due to a variety of complex domestic issues.

All applications to our bursary system were carefully assessed by the Bursary Review Panel before a decision was made regarding the degree of assistance that would be provided. The degree of need of each individual, and their financial circumstances, were considered on a case by case basis.

In line with our strategic plans, we aim to further increase our support of people from lower-income backgrounds in the coming years. The Covid-19 pandemic has caused significantly increased applications for our bursary-supported help, partly due to dyslexic children and adults having struggled during periods of home-schooling and working from home, away from the normal support systems, and partly because of financial difficulties resulting from furlough, pay cuts and redundancies.

We recognise that it is only because of the generosity of our donors that we are able to provide bursary-funded specialist support. We are indebted to all who made contributions to our work this year, enabling us to support our beneficiaries in this way.

Target 4: We aim to participate in provision of the government's National Tutoring Programme during 2021, in partnership with other like-minded organisations, in order to support disadvantaged children who have fallen behind with their education due to Covid-related disruptions. We aim to support over 3,000 disadvantaged pupils in this way, at a time when children with dyslexia and other specific learning difficulties are in particular need of help.

Outcome:

We succeeded in participating in the above project, in addition to all our other activities. Working in partnership with Patoss, Dyslexia Action, the British Dyslexia Association, The Dyslexia Guild and Real Group Ltd we delivered support to some 1,000 children through a network of specialist teachers.

Numbers of beneficiaries were fewer than had been hoped, due to school closures making it impossible for face to face support to be delivered in the school environment for large parts of the year. Whilst services were swapped online where possible, this did not suit all learners, particularly those with dyslexia and other specific learning difficulties, and numbers therefore fell short of our original target. Nevertheless, we are proud to have lent a hand to this national effort, at a time when so many children from disadvantaged backgrounds particularly needed extra help.

Target 5: We plan to make further progress with our Home of Our Own project, and hope to prepare and submit a full planning application for a new Centre in 2021, in partnership with the Arkell family, after conducting a consultation exercise with the local community.

Outcome:

For background, the Charity's lease of its existing buildings is due to be terminated once the Arkell family gain planning permission for redevelopment and sale of the site. Much background work has been conducted, to explore longer-term options for the future of the Charity's headquarters. Over a period of time, the Trustees have engaged in a series of discussions with the Arkell family, who currently own the buildings and surrounding land, with a view to submitting a joint planning application which would see the site reconfigured. The hope has been that, subject to the necessary planning consents, the Charity would be provided with a new, low-maintenance, high-efficiency Centre elsewhere on the site.

During the year, the lease was extended to June 2022 to provide more time for decisions to be finalised. In light of the ever-changing Covid-19 situation and its effect on building costs and availability of rented premises in general, and on the Charity's finances in particular, the Trustees made a concerted effort in 2021 to re-evaluate the relative costs and benefits of submitting a full planning application for a new Centre at this time. This involved detailed consultation with planning advisors, valuers and the Arkell family to pinpoint the exact arrangements that would be agreed, were the project to go ahead. This included finalising the precise location and size of the plot of land to be transferred to the Charity, an agreed purchase price, an exact definition of the square footage of the proposed building for which planning consent would be sought, and agreed arrangements regarding shared access to the site. Updated research was undertaken into building costs in the post-Covid, post-Brexit environment, where building-related inflation has increased at a high rate. At the same time, an audit of all viable alternative rental properties in a 20 mile radius was undertaken.

Subsequent to year end, after careful consideration, the Trustees took the decision not to pursue the purchase of land for the construction of a bespoke building for the Charity. Given the current economic and pandemic environment, financial position of the Charity and risks associated with the planning and construction process, the Trustees concluded that such a project was outside the Charity's current risk appetite. The Charity remains appreciative to the Arkell family for their support and understanding. Following the above decision, the Charity proceeded to evaluate alternative premises for rent against an approved set of criteria developed by the Trustees considering the needs of our staff, clients and stakeholders. A rental property at 24 West Street, Farnham was identified as the preferred option, which was registered as the new head office address in May 2022.

Target 6: We will continue to closely monitor income and expenditure during the coming year, at a time when considerable financial uncertainty still exists in the world at large.

Outcome:

At the time when this target was set, the main financial uncertainty in the world at large related to the ongoing impact of Covid-19. The first wave had passed but it was increasingly clear that the year would again be adversely affected, with case numbers starting to rise again, and vaccinations not yet available. Therefore, both the Finance, Audit, Investment and Risk committee and the main Board of Trustees continued to meet on a more regular basis throughout the year, to examine financial figures and updated forecasts.

A full description of the Charity's financial position can be found in the Treasurer's Report, page 22.

Additional activities in pursuit of our Mission:

In addition to meeting our plans above, as set out in last year's Annual Report and Financial Statements, we also achieved the following activities this year:

- **Providing dyslexia awareness training to 306 school representatives.** Covid-19 caused the provision of school in-services to be put on hold at times during the year. Despite this, 306 teachers, learning support assistants and parents attended a total of seven in-service days provided by our specialist staff at a variety of different schools, learning how to more effectively support pupils with dyslexia and other specific learning difficulties.
- **Providing dyslexia-related courses to 703 attendees.** A total of 703 people attended dyslexia-related courses in the year, including 46 students who undertook year-long diplomas in supporting dyslexic learners, and another 657 children, adults, teachers and teaching assistants who attended a number of other dyslexia-related short courses including Study Skills, Touch Typing, Thinking Skills workshops, Supporting Learners with Dyslexia, How to Provide Dyslexia Support By Video Call, Saturday Morning Lectures and a variety of other courses too many to mention specifically.
- **Providing the HELP Parents course to 282 people who have children with dyslexia.** 282 people attended our HELP Parents courses throughout the year, specifically designed to provide useful hints and tips to parents who have dyslexic children. As with all our courses, these were switched to online provision throughout Covid-19 restrictions. As mentioned above, 102 of these participants were specifically from lower income backgrounds and benefitted from bursary-funded support.
- **Providing dyslexia awareness training to employers and workplaces.** We continued to provide dyslexia awareness training to workplaces, as well as ad hoc support and advice when our specialist advice was required. Companies to benefit from our popular Lunch & Learn sessions included Project Centre, Harkness Kennett and Nestlé Purina.
- **Supporting the Defence, Science and Technology Laboratory (Dstl).** We were proud to provide dyslexia support to employees of Dstl again this year, with a mix of face-to-face consultations and video calls, particularly during on-going Covid-19 restrictions. This was in recognition of our reputation within the field and our mission to support adults with dyslexia as well as children and young people. We also support employees at other workplaces.

- **Saturday Morning Lectures.** We held two online Saturday Morning Lectures in the year, with guest speakers Dr Cathy Manning, and Professor Maggie Snowling from Oxford University, who delivered our 50th Anniversary Helen Arkell Lecture. We were delighted to be joined by many of our alumni as part of their continuing professional development. We are proud to top up the learning of our alumni, keeping their skills at the cutting edge of the dyslexia world. During Covid-19, all workshops and lectures were swapped to online delivery. We will recommence face-to-face Saturday Morning Lectures when Covid restrictions allow because many of our alumni attend specifically to catch up with their peers while gaining valuable CPD.
- **Raising awareness.** We were proud to play our part in raising awareness at government level by participating in the All Party Parliamentary Group on Dyslexia and Other Specific Learning Difficulties, chaired by the Right Honourable Sharon Hodgson MP, working alongside other leading organisations in the field of dyslexia. All such meetings took place online during the year.

We were also represented on the boards of the following groups, with whom we jointly raise awareness to the public and ensure standards within the field:

- the Council for the Registration of Schools Teaching Dyslexic Pupils (CReSTeD)
- the BDA Accreditation Board
- the SpLD Assessment Standards Committee (SASC)
- the SpLD Test Evaluation Committee (STEC)

In addition, we were pleased to take part in The Dyslexia Show, which was held as an online, virtual event this year.

- **Fundraising.** We completed the third full year of our new fundraising strategy, building upon the progress that was made last year. The small team comprised Hazel, part-time Fundraising & Communications Officer, supported by Jane as part-time Trusts Officer and Andy as Chief Executive. We further bolstered the team during the year, with the addition of Helen as part-time Communications/PR Assistant. We sought to further engage with Trusts & Foundations who have contributed to the Charity's work in the past as well as finding new potential supporters. This year's programme of events was again severely curtailed, with all face-to-face events again cancelled due to Covid-19.
- **Trusts & Foundations.** We are indebted to the generosity of more Trusts and Foundations than could possibly be mentioned individually. However, this year it is only right that we pay special tribute to The Aegis Charitable Trust for their £300,000 donation which is specifically to support three distinct projects over the next two years. Likewise, we make special mention of The National Lottery Community Fund, the CAF Resilience Fund and the Community Foundation for Surrey for helping us with special 'Covid-response' grants, ensuring that we could continue to fulfill our mission during the worst-affected months of the pandemic. The Kusuma Trust have also supported us brilliantly, with a donation to specifically help six schools with high Pupil Premium numbers in the following academic year. In addition, The Linbury Trust have commenced a most generous four-year commitment with us, to assist with implementation of bookings software and bursaries, and The McGreevy No 5 Charitable Settlement supported us for the second year of their amazing three-year commitment. We thank all our donors, large and small, for supporting our work this year.

- Community groups, clubs, associations and companies.** We have been very touched by the support from our local communities this year, including a wide variety of groups, clubs, associations and companies. We make special mention of the Rotary Club of Farnham for selecting us as their joint Charity of the Year, whose main event, a Great Gatsby 1920's evening, took place subsequent to the year end, in September 2021. Some community groups have chosen to support our work in Surrey while others have particularly wished to support the work provided at our regional hubs in Oxford, London, Wiltshire and the South-West. Several companies have donated to our work this year, often in response to the Lunch & Learn sessions that we have provided, to help raise awareness of dyslexia in the workplace. Whatever your particular area of interest, we are immensely grateful for your help and generosity in enabling us to fulfil our mission, reaching out to an ever-wider community of beneficiaries across the UK. We thank all of those organisations who have helped us to increase our voluntary income this year.
- Challenge events.** Our hearts go out to our five intrepid runners in the London Marathon, our nine entrants in the Royal Parks Half Marathon, and all our other challenge event supporters, who were again unable to participate in person this year due to Covid-19 restrictions. Most of these events are scheduled to take place in Autumn 2021. Many of our supporters opted to participate in a number of virtual events, including the Captain Tom 100 Challenge and our own 50th Anniversary Challenge. Graeme Gordon launched himself, literally, into his challenge of rowing 160 miles from the source of the Thames in Gloucestershire to Tower Bridge in the City in just four days. Participants in all these challenges threw themselves into fundraising with great enthusiasm, which was greatly appreciated by the Charity, and by those whom we continued to serve throughout the difficulties of Covid-19.
- Friends of Helen Arkell.** We take this opportunity to also thank all those individuals who supported our work through the Friends of Helen Arkell club this year by signing up to small regular donations. Lots of small donations can make a big difference to a charity such as ours, and we really appreciate your support. Our aim is to significantly increase the number of our Friends in the coming years. Friends are invited to all our events and gain a 'behind the scenes' viewpoint of the Charity's work and progress.
- Governance.** The frequency of Trustees' meetings was again increased during the year, at times when the pandemic was at its height. The Finance, Audit, Investment and Risk Committee also increased the frequency of meetings, together with the Property focus group, partly due to financial considerations relating to Covid-19 and partly due to detailed discussions regarding the Charity's future premises (see Target 5, page 12). All meetings were held virtually.
- Strategic Plan and ambitious aims.** Our annual Strategy Day, involving Trustees, staff and key stakeholders, reviewed the impact of Covid-19 on the Charity's activities and set out revised targets for the coming years, in furtherance of the Charity's Strategic Plan. Our aim is to double the number of beneficiaries who receive support from the Charity each year, by 2026. Other areas of focus included an annual review of the Charity's reserves policy, and detailed discussions regarding the Home of Our Own project (see Target 5, page 12).

The Helen Arkell team

- **Our volunteers.** All charities appreciate the contribution of volunteers and we are no different. Special mention of all our volunteer fundraisers who took on various virtual challenges during the year, mentioned above. Perhaps the biggest thank you should go to our dedicated unpaid Trustees, however, who give their time freely as volunteers in support of the Charity's aims, and again went above and beyond the call of duty in this second Covid-affected year.
- **Our staff.** We thank our amazing staff for their dedication, expertise, hard work and good humour, living our values of professional excellence with warmth and the personal touch. It is through our staff that we fulfill our mission each and every day. A special mention again this year, of our team's continued willingness to muck in and do whatever needed doing to safeguard the Charity during this period of Covid-19 crisis. This year again saw difficult and ever-changing circumstances, with reduced 'bubbles' and disruption to teams due to furlough.
- **Our beneficiaries.** We thank all those 1,087 people with dyslexia who have come to us for help this year. It is you who give us the inspiration to fulfill our mission, recognising every day that people with dyslexia bring exceptional qualities. We are proud to help you find out more about yourselves, and to help you forge new ways forward in life that will play to your strengths. We hope you will never look back, but if you do, we are here to help you whenever you need us. Above all, we hope you will believe in yourselves, achieve your goals and succeed on your own terms.
- **Our Vice-Patron, Susan Hampshire CBE.** We were delighted to welcome Susan Hampshire CBE into the role of Vice-Patron of the Charity during the year. Susan, Lady Kulukundis, née Hampshire, is an English actress known for her many television and film roles, including *The Forsyte Saga*, *The First Churchills*, *Vanity Fair*, *The Pallisers*, *The Grand*, *Monarch of the Glen* and others too many to mention. Dyslexic herself, and a renowned advocate for the rights and opportunities of people with dyslexia throughout her life, Susan was a good friend of our founder, the late Helen Arkell MBE, and is ideally suited to take on the role of Vice-Patron of the Charity, as we make progress with our plans.
- **Our Patron, Her Royal Highness, Princess Beatrice.** We are honoured that Princess Beatrice continues to act as our Patron. Dyslexic herself, Princess Beatrice understands our mission from a very personal perspective, and we were delighted that *Hello! Magazine* published an interview with Her Royal Highness, giving a fascinating insight into the world of dyslexia. This was picked up by several publications during the year, thereby creating increased awareness of the Charity's work.

Public benefit requirement

The Trustees are aware of the requirement to demonstrate public benefit, as set out in the Charities Act. Having due regard to the Charity Commission's guidance on public benefit, the Trustees are confident that the Charity's services meet these criteria, for all the reasons detailed above in the description of our aims, objectives and activities.

Over a thousand children, young people and adults benefitted directly from the Charity's services this year, in a 1:1 setting, whether face-to-face or by video call, and countless more people benefitted indirectly through their contact with teachers, teaching assistants and other interested parties who have received training in dyslexia awareness from our Charity.

We are committed to further increasing our reach and impact in the coming years, with a determination to open more regional hubs, increasing the number of our potential beneficiaries and particularly focusing our efforts on providing further assistance to people with dyslexia and other specific learning difficulties who are from lower-income backgrounds.

What our beneficiaries say

In a survey of this year's beneficiaries of bursary-funded support, respondents told us the following:

- 100% of respondents agreed that having a dyslexia assessment helps the person to understand themselves better, including their strengths and weaknesses.
- 96% of respondents agreed that having a dyslexia assessment helps you to access further support.
- 96% of respondents reported that the initial assessment led to improved confidence.
- 96% of respondents reported that the assessment led to reduced frustration and anxiety.
- 96% of respondents reported that the assessment led to improved literacy.
- 100% of respondents said they would recommend Helen Arkell Dyslexia Charity to a friend.

These are just a few of their comments:

"It is several months since my diagnosis and I now understand that it is possible to be very 'intelligent' yet be dyslexic. I now understand how seeing and processing things in a different way to many others is a special and valuable thing, a different thing - rather than a sign of dysfunction, or diminished intelligence."

"My son can now know that it's ok to have dyslexia and it won't stop him - it just takes him a little longer for his special brain to work."

"The assessor made my son feel so at ease. Getting the assessment has made a massive difference to my son's well-being. His school understands him so much better now and has put things in place to support him and make him feel included. Having the assessment has given him the confidence to say 'I can do it' and put in place strategies to help him do it. It's made such a difference to our lives. Thank you!"

"THANK YOU FROM THE BOTTOM OF MY HEART FOR YOUR SUPPORT AND FOR WHAT YOU ARE OFFERING TO PEOPLE LIKE ME."

And some more comments from our beneficiaries...

“The dyslexia assessment made a huge difference to my daughter who at the time was 9 years old. She is better supported at school now and not afraid to say aloud she has dyslexia. She has been surprised how many other people know about dyslexia once you start talking to people about it. She has helped other pupils in her class as well who are undiagnosed which has given her lots of self-confidence.”

“At the age of sixty one, my dyslexia diagnosis has made an enormous difference to my life on so many levels.”

“For my son it made him understand that his brain works differently from other children and that is ok and that makes him special too!”

“It might sound dramatic, and would definitely have been something I would have been very sceptical about if you had asked me before my diagnosis, but my diagnosis has allowed me to feel validated for being myself.”

“The assessment and the report was an absolute eye opener for me with regards to my daughter’s condition. It helped me put things in perspective and helped me to reach out to school to implement the tools and techniques recommended by the Helen Arkell charity. The stigma and reservation attached to the condition makes it hard for children and parents alike to come out and address it in an objective fashion. Helen Arkell removed those doubts, and helped provide guidance and recommendations to better manage the situation. My daughter is continuing to get the support from her school due to the assessment and is showing great improvement over the year since the appointment. We are grateful for your support and wish you carry on the great work to help many more children. Best wishes.”

“It was so wonderful to interact with the Helen Arkell Charity right from the beginning. As a parent, when you know your child is struggling but goes so unnoticed at school because of the sheer volume and depth of other worse issues at school, it was so reassuring to have the initial consultation and realise you are not crazy.”

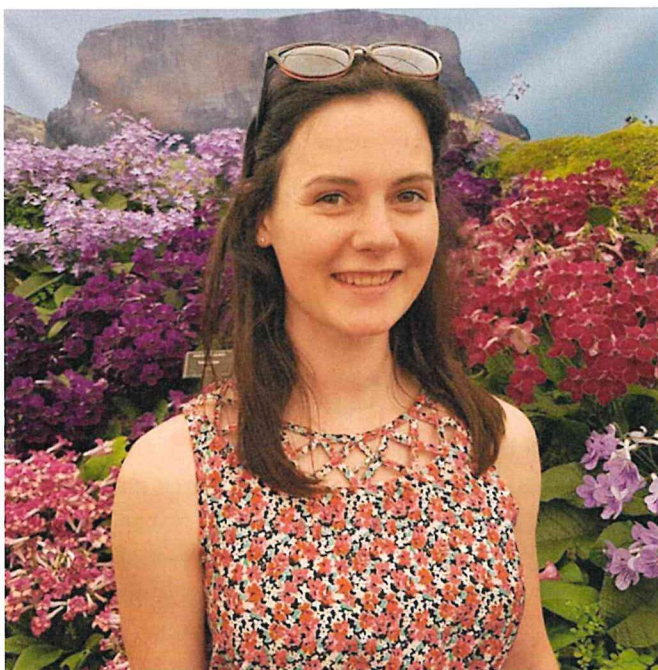
“The process of assessment was straightforward and thorough. My child found it so helpful - she started to understand herself and her issues rather than label herself as thick or stupid.”

“It might sound dramatic, and would definitely have been something I would have been very sceptical about if you had asked me before my diagnosis, but my diagnosis has allowed me to feel validated for being myself.”

Your support makes a real difference, a difference to people like Grace...

Understanding and loving my dyslexia has made me who I am today.

As a child, I was active, imaginative and asked endless questions. In the classroom however, I shied away from learning to read and write. Luckily for me, my school teachers recognised I may have been dyslexic from an early age. At just seven years old, I was first assessed at The Helen Arkell Centre with the aid of an assessment bursary.



Feeling inspired to help me in any way she could, my mum patiently and diligently sat with me learning times tables, endlessly reading books and checking all my spellings. But in seeing my struggle, she wanted to understand how she could teach me in ways that suited my neurodiversity. Again, we returned to The Helen Arkell Centre, only this time it was for her. Taking course after course, my mum studied for years to become a Level 7 OCR-accredited teacher for children with specific learning difficulties, before finally becoming a certified SENCo. All of this, while also teaching me in a creative, personalised way.

Seeing my mum's passion taught me that I could do whatever I wanted, and there would always be ways for me to get there. However, through GCSEs and AS-Levels, I never completed an exam paper in the time allocated, so why was it such a battle? Feeling that I wasn't reaching my full potential, I was re-assessed at seventeen... a full ten years after my first trip to The Helen Arkell Centre. It was then I learnt that I required 25% extra time in my exams. After this, in my A-Level exams I finally finished a paper with my head held high.

Throughout my university degree, I played to my strengths and worked on my weaknesses with a specialised tutor provided by my Disabled Students Allowance. I found out that my attention to detail, inquisitive nature and hands-on approach were ideal for a job in a laboratory. Now I am a research assistant at the University of Oxford discovering new drugs for neurodegenerative diseases. I believe my dyslexia allows me to look at research differently and gives me the creative edge needed to make important breakthroughs in science. I am proud of my dyslexia, but I know I wouldn't be where I am today without The Helen Arkell Centre and, of course, my amazing mum.

“Understanding and loving my dyslexia has made me who I am today.”

A Helen Arkell bursary can change a life...

“Helen Arkell listened to my concerns and have been with us every step of the way. Without getting a bursary for my child’s assessment I don’t know what I could have done next.”

“I really hope more people are aware of this amazing charity and wish people could donate because the bursary really does help families like mine. Thank you again so much to everyone involved at Helen Arkell - you have made such a big difference to my family and my child. From the first contact we made to the very end you have made us so welcome.”

“Oh my goodness, it was life changing for my son. We were able to understand what his strengths and weaknesses were which we then used to help the teachers teach him and a year on he is a completely different child - no crying, no anxiety, no chewing, better focus, more friends, more confident, he even put himself forward for school council. I know we would not be where we are now if we hadn’t have had the assessment and we would not have been able to afford it privately. Honestly, life changing for a child. I cannot thank you enough!”

“When the Helen Arkell Dyslexia Charity offered me a full bursary for a diagnostic assessment, I could not actually believe that this had happened! I felt and still do, very fortunate and grateful for such extraordinary support.”

“I can't thank the charity enough - their bursary made it possible for my child to try for A levels!”

“The ongoing, additional support which my diagnosis means I can access, is extremely helpful. I had never thought this could happen to me, but it has, thanks to the ‘magic gift’ of the bursary.”

“Having the assessment has been pivotal in accessing further support for my daughter who is currently at primary school. The Helen Arkell Dyslexia Charity were wonderful and instrumental in providing a full and thorough analysis and report outlining my daughter’s strengths and weaknesses to go back to the school with and insist on being placed on the SENCO register. This was in the middle of the pandemic and, having been furloughed, the bursary support I received was the difference between being able to afford the assessment to take place or for us to wait a further 18 months for the next time the school Ed Psych would re-assess. Thank you, Helen Arkell.”

“Oh my goodness, it was life changing for my son.”

Demand is high right now

We are seeing twice as many applications for bursary-funded support as normal, due to the financial difficulties caused by Covid-19. These include a whole host of children from homes where single-parents or foster-parents are struggling to make ends meet and are frequently in debt. All of these children (and adults) are having difficulties.

We understand that current circumstances are difficult for everyone, but if you are in a position to help with a donation, we would be hugely grateful for your support.

“I really hope more people are aware of this amazing charity and wish people could donate because the bursary really does help families like mine. Thank you again so much to everyone involved at Helen Arkell - you have made such a big difference to my family and my child. From the first contact we made to the very end you have made us so welcome.”

Treasurer's Report

This year the Charity reported an overall excess of income over expenditure (after transfer between funds) of £7,460, compared to a deficit of £60,001 in 2020, as reflected in the Statement of Financial Activities (SOFA). This is a satisfactory outcome as the challenging consequences of the pandemic continue to disrupt the wider economy and our daily lives. Despite these challenges the Charity and its staff have continued to adapt and our increased focus on fundraising has resulted in the receipt of the biggest single grant in our 50-year history, amounting to £300,000. We are indebted to The Aegis Charitable Trust for their generosity. Over the next two years this donation will enable the Charity to expand its fundraising activities, extend more bursary-funded help to individuals from lower-income backgrounds, and provide free specialist training to teachers from the State School sector. The income from this donation will be reflected on a time-apportion basis in accordance with the terms of the grant. Consequently £37,500 has been recognised within the 2021 financial year, with £262,500 being deferred in the balance sheet to future years. In 2021 the Charity also benefited from the deferral of the level 5 and 7 diploma training courses from the prior year resulting in additional income of £73,350 being recognised within the year. Corresponding costs of delivering the above courses were also recognised in 2021.

Income of £1,355,867 reflected a 13.6% increase over the prior year (2020: £1,193,931). This represents the highest income recorded by the Charity in its history and is aligned with the strategic direction outlined by the Trustees in the Strategic Plan. Overall costs increased by 7.5% to £1,348,407 (2020: £1,253,932). This reflects strong cost control over the period despite an increase in activity and one-off property related expenses. At year end Unrestricted Reserves reflected a modest decrease to £59,331 (2020: £62,649), which demonstrates the success of the actions taken by the Trustees and management to navigate the Charity through the consequences of the pandemic. Restricted Reserves amounted to £62,446 (2020: £51,668).

The Charity has reflected positive cash inflow from operations of £197,840 (2020: £6,114). The Charity ended the year with an increase in overall cash resources of £167,837 (2020: £91,211) after additional expenditure on a new IT system for managing bookings and the commencement of the repayment of the Coronavirus Business Interruption Loan (CBIL) taken out in the prior year. The remaining CBIL cash of £90,867 is still available for the Charity to use should the need arise in the next 5 years. The Charity ended the year with its highest ever cash reserves of £477,729.

Given the levels of cash that the Charity has on hand the Trustees, with the pro bono assistance of external investment management experts, developed and approved an investment strategy for the Charity. This is a low risk-based approach primarily focussed on improving the investment return in the form of interest on funds without exposing the Charity to unacceptable levels of risk. Investments are limited to term deposits with approved financial institutions covered by the FSCS deposit protection scheme. No one investment will exceed the £85,000 FSCS protection limit. Subsequent to year end, and after an extensive due diligence process, the Trustees approved the use of a cash management platform provided by Flagstone Investment Management. After careful review of the Charity's cashflow forecasts for the next two years the Trustees executed the investment of the cash in accordance with the approved investment strategy. The strategy and investment approach will be subject to regular review by the Trustees.

Also subsequent to the year end, in anticipation that restrictions resulting from the new Omicron coronavirus variant could continue to impact fundraising and charitable activity, the Trustees gained permission from a grant provider to de-restrict £50,000 of their restricted donation. This permission

was kindly granted, on the proviso that the funds would be re-designated in future, when reserves return to normal levels.

Since August 2021 and into Spring 2022, subsequent to year end, the charity has continued to receive voluntary donations at a strong level, including a substantial donation from The Constable Education Trust, to cover the cost of relocation to new offices, two years' rent, and provision of bursary-funded support to children from lower-income families. The Trustees are confident that the Charity has sufficient unrestricted funds to continue to successfully execute on its business plan and strategy for 2022.

Although the Charity has navigated well through the disruption in the current year, with both management and the Trustees taking appropriate actions when deemed necessary, the Trustees are focussed on building sufficient unrestricted reserves to ensure that the Charity is as financially secure as possible to deal with any further future disruption. Therefore, the Trustees are very aware that prudent fiscal management is critical in these uncertain times and consequently the Finance, Audit, Investment and Risk Committee (FAIR) has met frequently to oversee the management of the financial affairs of the Charity. FAIR has closely scrutinised the cashflow projections and budgets prepared by management and taken actions as noted in this report where necessary for the financial security of the Charity. At time of writing, it is forecast that the charity will have strengthened its reserves position by the end of the 2022 financial year.

FAIR has met jointly with the Property Focus Group throughout the year as the Charity has explored future property alternatives. Subsequent to year end, after careful consideration, the Trustees took the decision not to pursue the purchase of land for the construction of a bespoke building for the Charity. Given the current economic and pandemic environment, financial position of the Charity and risks associated with the planning and construction process, the Trustees concluded that such a project was outside the Charity's current risk appetite. The Charity remains appreciative to the Arkell family for their support and understanding. Following the above decision, the Charity proceeded to evaluate alternative premises for rent against an approved set of criteria developed by the Trustees considering the needs of our staff, clients and stakeholders. A rental property at 24 West Street, Farnham was identified as the preferred option, which was registered as the new head office address in May 2022.

The budget for the forthcoming year has been approved by FAIR and the Trustees. This budget allows for the continued expansion of the Charity, increasing its geographical reach and impact to meet the demand that exists for its services. The budget also allows for the continued development of online tools and capabilities to enable the Charity to operate remotely without compromising the quality of its services. In addition, the budget allows for one-off costs associated with moving to new premises, investment in upgrading an outdated website, and the appointment of regional Hub Coordinators to manage a growing number of dyslexia specialists. In setting the budget, the Trustees note that there remains a high degree of uncertainty relative to the expected outcome for the year ahead. In this context the CBIL loan remains available to fund the Charity in the event of an adverse outturn in the Charity's profitability in the short term. The Trustees remain committed to strengthening the Charity's reserves in the medium to long term.

Reserves policy

The Board of Trustees aims for the Charity to maintain sufficient reserves to continue operations in the event of a significant reduction in income for a period of three to six months. The Board is

mindful that this does not necessarily require reserves to cover the Charity's total expenditure for such a period. This is because were the Charity to experience a large drop in receipts, given the scalability of its activities, costs would fall in a similar manner. Likewise, the Charity is not entirely reliant on voluntary income to cover all of its costs, as some of its activities generate income.

As a result, the Board believes that the Charity's target level of reserves should be with reference to its 'fixed costs', particularly overheads and the staff costs associated with those who are engaged on full time, long term contracts.

Taking the policy into account, the target range for the Charity's reserves associated with its unrestricted activities currently is set by the Trustees at £150,000 to £200,000. The policy and target range are regularly reviewed, reflecting the Charity's size and the proportion of total income achieved by fundraising. This reserving policy was debated at length by the Trustees at the strategy away day in September and no material changes were made to the existing policy.

The Trustees seek to maintain a balance of sufficient reserves whilst also investing in growth to enable more lives to be positively affected by the Charity's work, in accordance with its objectives.

As at 31 August 2021, the balance of Unrestricted Reserves stood at £59,331 (2020: £62,649). In addition, the CBIL loan of £90,867 has increased cash resources. As previously described in the Treasurer's Report, (page 22), subsequent to the year end, agreement was received from a donor to de-restrict £50,000 of their restricted donation. This permission was kindly granted on the proviso that the funds would be re-designated in future, when reserves return to normal levels. In addition, since August 2021 and into Spring 2022 the charity has continued to receive voluntary donations at a strong level, including a substantial donation from The Constable Education Trust, to cover the cost of relocation to new offices, two years' rent, and provision of bursary-funded support to children from lower-income families. At time of writing, it is forecast that the charity will have strengthened its reserves position by the end of the 2022 financial year.

This, together with increased cash resources, positions the Charity well to pursue its regional growth strategy and objectives as outlined in the Strategic Plan. This is dependent on the future course of the pandemic and financial pressures on society due to events in Ukraine and Europe in general. The Trustees will monitor future developments closely and ensure that the Charity responds and adapts its plans accordingly, maintaining financial stability as the foundation of all decisions. Any short-term funding requirements will be met through the CBIL loan.

Risk management

FAIR meets regularly to evaluate and monitor the Charity's risk profile. In the year under review the challenges and problems created by the pandemic persisted. The focus of the Trustees continued to be on the financial stability of the Charity and this report outlines the primary actions taken to mitigate the emerging risks. The Charity continues to update the risk register as new risks emerge and to ensure that mitigating actions are taken promptly where necessary.

At the time of this report great uncertainty remains about the impact of the new emerging Omicron coronavirus variant, and with events escalating in Ukraine. The Trustees have redefined the objectives for the coming year and are continuing to monitor the Charity's financial position frequently with financial systems being updated as needed. The Charity has a strategic plan that is dynamic and a realistic budget. The Charity is well positioned for the year ahead to pursue its objectives and maintain financial stability.

Plans for the future period

We are determined to progress the growth targets as detailed in our Strategic Plan, despite ongoing disruption caused by Covid in general and the Omicron variant in particular, and have set ourselves the following targets for the year ending 31 August 2022.

Target 1: In line with our mission to remove barriers to learning and life for people with dyslexia by providing expert, personal and life-changing support, we aim to further increase the numbers of people with dyslexia whom we help, in the year ending August 2022, subject to Covid-19 lockdowns and restrictions. This will include 1:1 support by means of assessments, consultations, tuition, skills-building and coaching for children, young people and adults at any stage of their lives.

Target 2: We aim to progress Year 1 of three projects for which funding of £300,000 has specifically been provided by a generous donor in the 2021 financial year. These consist of: (i) further developing the fundraising team; (ii) providing bursary-funded support to individuals from lower-income backgrounds; (iii) providing specialist dyslexia training to teachers and teaching assistants working in the State School sector.

Target 3: We plan to provide bursary-funded specialist support to even more people with dyslexia from lower-income backgrounds next year than we supported in year ended August 2021, thanks in part to the above-mentioned donation. Our intention is to help more than 200 people from lower-income backgrounds in this way.

Target 4: We aim to support six State Schools in London, where numbers of pupils on free school meals (Pupil Premium), are higher than average. Support will take the form of our highly regarded FAST Projects (Families and Schools Together), where dyslexia training is provided to teaching staff, teaching assistants, and parents. In addition, specialist 1:1 support will be provided to selected learners who are most in need of our help. All six of these projects have been generously sponsored by The Kusuma Trust, with a donation received in the 2021 financial year.

Target 5: Having taken the decision subsequent to year end, that the Charity should not pursue the purchase of land on the existing site, for the construction of a bespoke building, a priority for the year ahead will be to source and rent premises elsewhere. The Charity will now proceed to evaluate alternative premises for rent against an approved set of criteria developed by the Trustees considering the needs of our staff, clients and stakeholders. At time of signing these accounts, this target has already been successfully achieved, with new premises identified in Farnham town centre.

Target 6: We plan to update the syllabus of our Level 7 Diploma Course in Teaching and Assessing Learners with Dyslexia/Specific Learning Difficulties during the coming year, with consideration for new-found ways of supporting dyslexic learners in the post-Covid environment. The new-look course will be launched in Spring 2022, ready to commence in September.

Target 7: We will continue to closely monitor income and expenditure during the coming year, at a time when considerable financial uncertainty still exists in the world at large, with the Covid Omicron variant very much in existence at time of writing, and events escalating in Ukraine. Any short-term funding requirements will be met through the CBIL loan. See the Treasurer's Report for details (page 22). The Finance, Audit, Investment and Risk Committee (FAIR) will continue to meet regularly throughout the year, together with the Property focus group. The Trustee board will also continue to meet more regularly than normal while Covid-19 continues to pose a threat to the smooth running of our activities.

HELEN ARKELL DYSLEXIA CHARITY

REPORT OF THE TRUSTEES
for the year ended 31 August 2021

STATEMENT OF TRUSTEES' RESPONSIBILITIES

The Trustees (who are also the directors of Helen Arkell Dyslexia Charity for the purposes of company law) are responsible for preparing the Report of the Trustees and the financial statements in accordance with applicable law and United Kingdom Accounting Standards (United Kingdom Generally Accepted Accounting Practice).

Company law requires the Trustees to prepare financial statements for each financial year which give a true and fair view of the state of affairs of the charitable company and of the incoming resources and application of resources, including the income and expenditure of the charitable company for that period. In preparing those financial statements, the Trustees are required to

- select suitable accounting policies and then apply them consistently;
- observe the methods and principles in the Charity SORP;
- make judgements and estimates that are reasonable and prudent;
- prepare the financial statements on the going concern basis unless it is inappropriate to presume that the charitable company will continue in business.

The Trustees are responsible for keeping proper accounting records which disclose with reasonable accuracy at any time the financial position of the charitable company and to enable them to ensure that the financial statements comply with the Companies Act 2006. They are also responsible for safeguarding the assets of the charitable company and hence for taking reasonable steps for the prevention and detection of fraud and other irregularities.

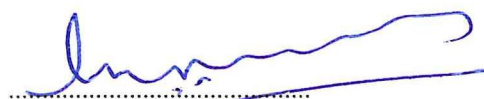
In so far as the Trustees are aware:

- there is no relevant audit information of which the charitable company's auditors are unaware; and
- the Trustees have taken all steps that they ought to have taken to make themselves aware of any relevant audit information and to establish that the auditors are aware of that information.

AUDITORS

The auditors, HPCA Ltd, will be proposed for re-appointment at the forthcoming Annual General Meeting.

Approved by order of the board of Trustees on 25 May 2021 and signed on its behalf by:



.....
Gary Hay
Chair of Trustees

REPORT OF THE INDEPENDENT AUDITORS TO THE MEMBERS OF
HELEN ARKELL DYSLEXIA CHARITY

Opinion

We have audited the financial statements of Helen Arkell Dyslexia Charity (the 'charitable company') for the year ended 31 August 2021 which comprise the Statement of Financial Activities, the Balance Sheet, the Cash Flow Statement and notes to the financial statements, including a summary of significant accounting policies. The financial reporting framework that has been applied in their preparation is applicable law and United Kingdom Accounting Standards (United Kingdom Generally Accepted Accounting Practice).

In our opinion the financial statements:

- give a true and fair view of the state of the charitable company's affairs as at 31 August 2021 and of its incoming resources and application of resources, including its income and expenditure, for the year then ended;
- have been properly prepared in accordance with United Kingdom Generally Accepted Accounting Practice; and
- have been prepared in accordance with the requirements of the Companies Act 2006.

Basis for opinion

We conducted our audit in accordance with International Standards on Auditing (UK) (ISAs (UK)) and applicable law. Our responsibilities under those standards are further described in the Auditors' responsibilities for the audit of the financial statements section of our report. We are independent of the charitable company in accordance with the ethical requirements that are relevant to our audit of the financial statements in the UK, including the FRC's Ethical Standard, and we have fulfilled our other ethical responsibilities in accordance with these requirements. We believe that the audit evidence we have obtained is sufficient and appropriate to provide a basis for our opinion.

Conclusions relating to going concern

We have nothing to report in respect of the following matters in relation to which the ISAs (UK) require us to report to you where:

- the Trustees' use of the going concern basis of accounting in the preparation of the financial statements is not appropriate; or
- the Trustees have not disclosed in the financial statements any identified material uncertainties that may cast significant doubt about the charitable company's ability to continue to adopt the going concern basis of accounting for a period of at least twelve months from the date when the financial statements are authorised for issue.

Other information

The Trustees are responsible for the other information. The other information comprises the information included in the annual report, other than the financial statements and our Report of the Independent Auditors thereon.

Our opinion on the financial statements does not cover the other information and, except to the extent otherwise explicitly stated in our report, we do not express any form of assurance conclusion thereon.

In connection with our audit of the financial statements, our responsibility is to read the other information and, in doing so, consider whether the other information is materially inconsistent with the financial statements or our knowledge obtained in the audit or otherwise appears to be materially misstated. If we identify such material inconsistencies or apparent material misstatements, we are required to determine whether there is a material misstatement in the financial statements or a material misstatement of the other information. If, based on the work we have performed, we conclude that there is a material misstatement of this other information, we are required to report that fact. We have nothing to report in this regard.

Opinions on other matters prescribed by the Companies Act 2006

In our opinion, based on the work undertaken in the course of the audit:

- the information given in the Report of the Trustees for the financial year for which the financial statements are prepared is consistent with the financial statements; and
- the Report of the Trustees has been prepared in accordance with applicable legal requirements.

Matters on which we are required to report by exception

In the light of the knowledge and understanding of the charitable company and its environment obtained in the course of the audit, we have not identified material misstatements in the Report of the Trustees.

**REPORT OF THE INDEPENDENT AUDITORS TO THE MEMBERS OF
HELEN ARKELL DYSLEXIA CHARITY**

Matters on which we are required to report by exception

We have nothing to report in respect of the following matters where the Companies Act 2006 requires us to report to you if, in our opinion:

- adequate accounting records have not been kept or returns adequate for our audit have not been received from branches not visited by us; or
- the financial statements are not in agreement with the accounting records and returns; or
- certain disclosures of Trustees' remuneration specified by law are not made; or
- we have not received all the information and explanations we require for our audit; or
- the Trustees were not entitled to take advantage of the small companies exemption from the requirement to prepare a Strategic Report or in preparing the Report of the Trustees.

Responsibilities of Trustees

As explained more fully in the Statement of Trustees' Responsibilities, the Trustees (who are also the directors of the charitable company for the purposes of company law) are responsible for the preparation of the financial statements and for being satisfied that they give a true and fair view, and for such internal control as the Trustees determine is necessary to enable the preparation of financial statements that are free from material misstatement, whether due to fraud or error.

In preparing the financial statements, the Trustees are responsible for assessing the charitable company's ability to continue as a going concern, disclosing, as applicable, matters related to going concern and using the going concern basis of accounting unless the trustees either intend to liquidate the charitable company or to cease operations, or have no realistic alternative but to do so.

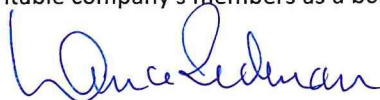
Our responsibilities for the audit of the financial statements

Our objectives are to obtain reasonable assurance about whether the financial statements as a whole are free from material misstatement, whether due to fraud or error, and to issue a Report of the Independent Auditors that includes our opinion. Reasonable assurance is a high level of assurance, but is not a guarantee that an audit conducted in accordance with ISAs (UK) will always detect a material misstatement when it exists. Misstatements can arise from fraud or error and are considered material if, individually or in the aggregate, they could reasonably be expected to influence the economic decisions of users taken on the basis of these financial statements.

A further description of our responsibilities for the audit of the financial statements is located on the Financial Reporting Council's website at www.frc.org.uk/auditorsresponsibilities. This description forms part of our Report of the Independent Auditors.

Use of our report

This report is made solely to the charitable company's members, as a body, in accordance with Chapter 3 of Part 16 of the Companies Act 2006. Our audit work has been undertaken so that we might state to the charitable company's members those matters we are required to state to them in an auditors' report and for no other purpose. To the fullest extent permitted by law, we do not accept or assume responsibility to anyone other than the charitable company and the charitable company's members as a body, for our audit work, for this report, or for the opinions we have formed.



Lance Redman (Senior Statutory Auditor)

for and on behalf of HPCA Ltd

Chartered Accountants

and Statutory Auditors

Station House

Connaught Road

Brookwood

Woking

Surrey

GU24 0ER

Date: 15 June 2022

HELEN ARKELL DYSLEXIA CHARITY

STATEMENT OF FINANCIAL ACTIVITIES
for the year ended 31 August 2021

	Notes	Unrestricted funds £	Restricted funds £	2021 Total funds £	2020 Total funds £
INCOME AND ENDOWMENTS FROM					
Donations and legacies	2	118,372	136,750	255,122	171,634
Charitable activities					
Bookshop	5	48,085	-	48,085	42,901
Tuition		130,545	-	130,545	142,712
Assessments		564,999	-	564,999	556,444
Courses		334,219	-	334,219	253,572
Other		3,120	-	3,120	2,527
Central staff		13,690	-	13,690	5,990
Shared overheads		2,510	-	2,510	501
Other trading activities	3	3,550	-	3,550	17,577
Investment income	4	27	-	27	73
Total		1,219,117	136,750	1,355,867	1,193,931
EXPENDITURE ON					
Raising funds	6	3,448	-	3,448	7,666
Charitable activities					
Bookshop	7	31,642	-	31,642	34,332
Tuition		179,651	6,265	185,916	121,410
Assessments		487,347	82,547	569,894	526,465
Courses		255,616	11,370	266,986	263,582
Other		-	-	-	459
Central staff		146,677	-	146,677	147,841
Shared overheads		143,844	-	143,844	152,177
Total		1,248,225	100,182	1,348,407	1,253,932
NET INCOME/(EXPENDITURE)		(29,108)	36,568	7,460	(60,001)
Transfers between funds	21	25,790	(25,790)	-	-

The notes form part of these financial statements

continued...

HELEN ARKELL DYSLEXIA CHARITY

STATEMENT OF FINANCIAL ACTIVITIES
for the year ended 31 August 2021

	Notes	Unrestricted funds £	Restricted funds £	2021 Total funds £	2020 Total funds £
Net movement in funds		(3,318)	10,778	7,460	(60,001)
RECONCILIATION OF FUNDS					
Total funds brought forward		62,649	51,668	114,317	174,318
TOTAL FUNDS CARRIED FORWARD		<u>59,331</u>	<u>62,446</u>	<u>121,777</u>	<u>114,317</u>

The notes form part of these financial statements

HELEN ARKELL DYSLEXIA CHARITY

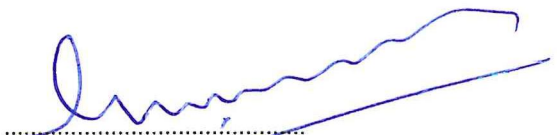
BALANCE SHEET

31 August 2021

	Notes	Unrestricted funds £	Restricted funds £	2021 Total funds £	2020 Total funds £
FIXED ASSETS					
Intangible assets	13	19,757	-	19,757	9,156
Tangible assets	14	<u>16,432</u>	<u>-</u>	<u>16,432</u>	<u>9,633</u>
		36,189	-	36,189	18,789
CURRENT ASSETS					
Stocks	15	32,228	-	32,228	30,520
Debtors	16	140,161	-	140,161	93,194
Cash at bank and in hand		<u>152,783</u>	<u>324,946</u>	<u>477,729</u>	<u>309,892</u>
		325,172	324,946	650,118	433,606
CREDITORS					
Amounts falling due within one year	17	(229,963)	(150,000)	(379,963)	(247,211)
		<u>-</u>	<u>-</u>	<u>-</u>	<u>-</u>
NET CURRENT ASSETS		<u>95,209</u>	<u>174,946</u>	<u>270,155</u>	<u>186,395</u>
TOTAL ASSETS LESS CURRENT LIABILITIES					
		131,398	174,946	306,344	205,184
CREDITORS					
Amounts falling due after more than one year	18	(72,067)	(112,500)	(184,567)	(90,867)
		<u>-</u>	<u>-</u>	<u>-</u>	<u>-</u>
NET ASSETS		<u>59,331</u>	<u>62,446</u>	<u>121,777</u>	<u>114,317</u>
FUNDS					
Unrestricted funds	21			59,331	62,649
Restricted funds				<u>62,446</u>	<u>51,668</u>
TOTAL FUNDS				<u>121,777</u>	<u>114,317</u>

These financial statements have been prepared in accordance with the provisions applicable to charitable companies subject to the small companies regime.

The financial statements were approved by the Board of Trustees on 25 May 2021 and were signed on its behalf by:


 Gary Hay
 Chair of Trustees

The notes form part of these financial statements

HELEN ARKELL DYSLEXIA CHARITY

CASH FLOW STATEMENT
for the year ended 31 August 2021

	Notes	2021 £	2020 £
Cash flows from operating activities			
Cash generated from operations	1	200,841	6,615
Interest paid		<u>(3,001)</u>	<u>(501)</u>
Net cash provided by operating activities		<u>197,840</u>	<u>6,114</u>
Cash flows from investing activities			
Purchase of intangible fixed assets		(15,800)	(2,100)
Purchase of tangible fixed assets		(11,098)	(6,876)
Interest received		<u>27</u>	<u>73</u>
Net cash used in investing activities		<u>(26,871)</u>	<u>(8,903)</u>
Cash flows from financing activities			
New loans in year		-	94,000
Loan repayments in year		<u>(3,132)</u>	<u>-</u>
Net cash (used in)/provided by financing activities		<u>(3,132)</u>	<u>94,000</u>
Change in cash and cash equivalents in the reporting period			
		167,837	91,211
Cash and cash equivalents at the beginning of the reporting period		<u>309,892</u>	<u>218,681</u>
Cash and cash equivalents at the end of the reporting period		<u>477,729</u>	<u>309,892</u>

The notes form part of these financial statements

HELEN ARKELL DYSLEXIA CHARITY

NOTES TO THE CASH FLOW STATEMENT
for the year ended 31 August 2021

1. RECONCILIATION OF NET INCOME/(EXPENDITURE) TO NET CASH FLOW FROM OPERATING ACTIVITIES

	2021	2020
	£	£
Net income/(expenditure) for the reporting period (as per the Statement of Financial Activities)	7,460	(60,001)
Adjustments for:		
Depreciation charges	9,497	15,164
Interest received	(27)	(73)
Interest paid	3,001	501
(Increase)/decrease in stocks	(1,708)	3,530
(Increase)/decrease in debtors	(46,967)	99,673
Increase/(decrease) in creditors	<u>229,585</u>	<u>(52,179)</u>
Net cash provided by operations	<u>200,841</u>	<u>6,615</u>

2. ANALYSIS OF CHANGES IN NET FUNDS

	At 1.9.20	Cash flow	At 31.8.21
	£	£	£
Net cash			
Cash at bank and in hand	<u>309,892</u>	<u>167,837</u>	<u>477,729</u>
	<u>309,892</u>	<u>167,837</u>	<u>477,729</u>
Debt			
Debts falling due within 1 year	(3,133)	(15,667)	(18,800)
Debts falling due after 1 year	<u>(90,867)</u>	<u>18,800</u>	<u>(72,067)</u>
	<u>(94,000)</u>	<u>3,133</u>	<u>(90,867)</u>
Total	<u>215,892</u>	<u>170,970</u>	<u>386,862</u>

The notes form part of these financial statements

HELEN ARKELL DYSLEXIA CHARITY

NOTES TO THE FINANCIAL STATEMENTS **for the year ended 31 August 2021**

1. ACCOUNTING POLICIES

Basis of preparing the financial statements

The financial statements of the charitable company, which is a public benefit entity under FRS 102, have been prepared in accordance with the Charities SORP (FRS 102) 'Accounting and Reporting by Charities: Statement of Recommended Practice applicable to charities preparing their accounts in accordance with the Financial Reporting Standard applicable in the UK and Republic of Ireland (FRS 102) (effective 1 January 2019)', Financial Reporting Standard 102 'The Financial Reporting Standard applicable in the UK and Republic of Ireland' and the Companies Act 2006. The financial statements have been prepared under the historical cost convention.

Income

All income is recognised in the Statement of Financial Activities once the charity has entitlement to the funds, it is probable that the income will be received and the amount can be measured reliably.

Non refundable deposits are recognised when money is received as this is the point the charity is entitled to it. Course income received in advance is deferred and is recognised evenly over the duration of the service.

The charity received a significant restricted grant to cover a period of 2 years, this income will be recognised evenly over the 24 month period.

Expenditure

Liabilities are recognised as expenditure as soon as there is a legal or constructive obligation committing the charity to that expenditure, it is probable that a transfer of economic benefits will be required in settlement and the amount of the obligation can be measured reliably. Expenditure is accounted for on an accruals basis and has been classified under headings that aggregate all cost related to the category. Where costs cannot be directly attributed to particular headings they have been allocated to activities on a basis consistent with the use of resources.

Intangible asset

Amortisation is provided at the following annual rates in order to amortise each asset over its estimated useful life. Commencement of amortisation will begin when the asset is available for its intended use.

Website	- 20% on cost
Software	- 33% on cost

Tangible fixed assets

Depreciation is provided at the following annual rates in order to write off each asset over its estimated useful life.

Improvements to property	- 25% on cost
Plant and machinery	- 25% on cost
Fixtures and fittings	- 25% on cost

Stocks

Stocks are valued at the lower of cost and net realisable value, after making due allowance for obsolete and slow moving items.

Taxation

The charity is exempt from corporation tax on its charitable activities.

Fund accounting

Unrestricted funds can be used in accordance with the charitable objectives at the discretion of the trustees. Restricted funds can only be used for particular restricted purposes within the objects of the charity. Restrictions arise when specified by the donor or when funds are raised for particular restricted purposes. Further explanation of the nature and purpose of each fund is included in the notes to the financial statements.

continued...

HELEN ARKELL DYSLEXIA CHARITY

NOTES TO THE FINANCIAL STATEMENTS - continued
for the year ended 31 August 2021

1. ACCOUNTING POLICIES - continued

Pension costs and other post-retirement benefits

The charitable company operates a defined contribution pension scheme. Contributions payable to the charitable company's pension scheme are charged to the Statement of Financial Activities in the period to which they relate.

Government grants

Grants received, including from the UK government from the Coronavirus Job Retention Scheme (CJRS), are accounted for using the accruals model. The income has been recognised as grant income in the period to which the payroll cost relates.

2. DONATIONS AND LEGACIES

	2021	2020
	£	£
Donations	255,122	166,634
Legacies	<u>-</u>	<u>5,000</u>
	<u>255,122</u>	<u>171,634</u>

3. OTHER TRADING ACTIVITIES

	2021	2020
	£	£
Fundraising events	<u>3,550</u>	<u>17,577</u>

4. INVESTMENT INCOME

	2021	2020
	£	£
Deposit account interest	<u>27</u>	<u>73</u>

5. INCOME FROM CHARITABLE ACTIVITIES

	Activity	2021	2020
		£	£
Income	Bookshop	45,482	39,171
CJRS Income	Bookshop	2,603	3,730
Income	Tuition	123,155	137,966
CJRS Income	Tuition	7,390	4,746
Income	Assessments	530,941	519,114
CJRS Income	Assessments	34,058	37,330
Income	Courses	08,983	214,471
CJRS Income	Courses	<u>25,236</u>	<u>39,101</u>
Carried forward		1,077,848	995,629

continued...

HELEN ARKELL DYSLEXIA CHARITY

NOTES TO THE FINANCIAL STATEMENTS - continued
for the year ended 31 August 2021

5. INCOME FROM CHARITABLE ACTIVITIES - continued

		2021	2020
		£	£
Brought forward		1,077,848	995,629
Income	Other	3,120	2,527
CJRS Income	Central staff	13,690	5,990
CBIL Income	Shared overheads	<u>2,510</u>	<u>501</u>
		<u>1,097,168</u>	<u>1,004,647</u>

Coronavirus Job Retention Scheme (CJRS), more commonly known as furlough scheme.

Coronavirus Business Interruption Loan (CBIL) - See note 19.

6. RAISING FUNDS

Raising donations and legacies

	2021	2020
	£	£
Fundraising	<u>3,448</u>	<u>7,666</u>

7. CHARITABLE ACTIVITIES COSTS

	Direct Costs £	Support costs (see note 8) £	Total £
Bookshop	31,642	-	31,642
Tuition	185,916	-	185,916
Assessments	569,894	-	569,894
Courses	266,986	-	266,986
Central staff	146,677	-	146,677
Shared overheads	<u>-</u>	<u>143,844</u>	<u>143,844</u>
	<u>1,201,115</u>	<u>143,844</u>	<u>1,344,959</u>

continued...

HELEN ARKELL DYSLEXIA CHARITY

NOTES TO THE FINANCIAL STATEMENTS - continued
for the year ended 31 August 2021

8. SUPPORT COSTS

	Management	Finance	Governance costs	Total
	£	£	£	£
Shared overheads	<u>135,293</u>	<u>3,001</u>	<u>5,550</u>	<u>143,844</u>

9. NET INCOME/(EXPENDITURE)

Net income/(expenditure) is stated after charging/(crediting):

	2021	2020
	£	£
Auditors' remuneration	5,550	5,500
Depreciation - owned assets	4,299	3,213
Website amortisation	<u>5,199</u>	<u>11,952</u>

10. TRUSTEES' REMUNERATION AND BENEFITS

There were no trustees' remuneration or other benefits for the year ended 31 August 2021 nor for the year ended 31 August 2020.

Trustees' expenses

There were no trustees' expenses paid for the year ended 31 August 2021 nor for the year ended 31 August 2020.

11. STAFF COSTS

	2021	2020
	£	£
Wages and salaries	671,266	641,362
Social security costs	63,021	50,570
Other pension costs	<u>12,375</u>	<u>12,134</u>
	<u>746,662</u>	<u>704,066</u>

The average monthly number of employees during the year was as follows:

	2021	2020
Charitable activities	43	46
Fundraising & Communications	3	2
Support Services	<u>2</u>	<u>2</u>
	<u>48</u>	<u>50</u>

One employee received emoluments in excess of £60,000, falling within the range £80,000 - £90,000 (£82,216). The total remuneration for key management personnel in the year was £231,959 (2020: £162,370). 10 employees were full time (2020: 11). 38 employees were part time (2020: 39). No trustees received any remuneration in the year.

continued...

HELEN ARKELL DYSLEXIA CHARITY

**NOTES TO THE FINANCIAL STATEMENTS - continued
for the year ended 31 August 2021**

12. COMPARATIVES FOR THE STATEMENT OF FINANCIAL ACTIVITIES - continued				
	Unrestricted funds	Restricted funds	Total funds	
	£	£	£	
Net movement in funds	(56,016)	(3,985)	(60,001)	
RECONCILIATION OF FUNDS				
Total funds brought forward	<u>118,665</u>	<u>55,653</u>	<u>174,318</u>	
TOTAL FUNDS CARRIED FORWARD	<u><u>62,649</u></u>	<u><u>51,668</u></u>	<u><u>114,317</u></u>	
13. INTANGIBLE FIXED ASSETS				
	Software £	Website £	Total £	
COST				
At 1 September 2020	-	59,722	59,722	
Additions	<u>15,000</u>	<u>800</u>	<u>15,800</u>	
At 31 August 2021	<u>15,000</u>	<u>60,522</u>	<u>75,522</u>	
AMORTISATION				
At 1 September 2020	-	50,566	50,566	
Charge for year	<u>-</u>	<u>5,199</u>	<u>5,199</u>	
At 31 August 2021	<u>-</u>	<u>55,765</u>	<u>55,765</u>	
NET BOOK VALUE				
At 31 August 2021	<u>15,000</u>	<u>4,757</u>	<u>19,757</u>	
At 31 August 2020	<u>-</u>	<u>9,156</u>	<u>9,156</u>	
14. TANGIBLE FIXED ASSETS				
	Improvements to property £	Plant & machinery £	Fixtures & fittings £	Total £
COST				
At 1 September 2020	80,670	83,527	15,161	179,358
Additions	<u>4,685</u>	<u>6,413</u>	<u>-</u>	<u>11,098</u>
At 31 August 2021	<u>85,355</u>	<u>89,940</u>	<u>15,161</u>	<u>190,456</u>
DEPRECIATION				
At 1 September 2020	78,556	77,825	13,344	169,725
Charge for year	<u>-</u>	<u>3,242</u>	<u>1,057</u>	<u>4,299</u>
At 31 August 2021	<u>78,556</u>	<u>81,067</u>	<u>14,401</u>	<u>174,024</u>
NET BOOK VALUE				
At 31 August 2021	<u>6,799</u>	<u>8,873</u>	<u>760</u>	<u>16,432</u>
At 31 August 2020	<u>2,114</u>	<u>5,702</u>	<u>1,817</u>	<u>9,633</u>

HELEN ARKELL DYSLEXIA CHARITY

NOTES TO THE FINANCIAL STATEMENTS - continued
for the year ended 31 August 2021

15. STOCKS		2021	2020
		£	£
	Stocks	<u>32,228</u>	<u>30,520</u>

16. DEBTORS: AMOUNTS FALLING DUE WITHIN ONE YEAR		2021	2020
		£	£
	Trade debtors	135,002	85,336
	VAT	337	-
	Prepayments and accrued income	<u>4,822</u>	<u>7,858</u>
		<u>140,161</u>	<u>93,194</u>

Within Trade debtors is £133,903 (2020: £85,246) of sales invoices which have been raised in the year but relate to services which will be provided in the following year. Accordingly this income will be recognised in the year ended 31st August 2022 and is included within deferred income at the balance sheet date.

17. CREDITORS: AMOUNTS FALLING DUE WITHIN ONE YEAR		2021	2020
		£	£
	Bank loans and overdrafts (see note 19)	18,800	3,133
	Trade creditors	6,883	4,096
	Social security and other taxes	19,283	13,976
	VAT	-	139
	Accruals and deferred income	169,385	114,355
	Accrued expenses	15,612	38,162
	Deferred income -19/20 Courses	-	73,350
	Aegis Charitable Trust 21/22 Income	<u>150,000</u>	-
		<u>379,963</u>	<u>247,211</u>

Due to COVID 19, the 19/20 courses were postponed during the summer term. Consequently £73,350 of income was deferred and was released during the 20/21 Autumn term when these courses were resumed.

18. CREDITORS: AMOUNTS FALLING DUE AFTER MORE THAN ONE YEAR		2021	2020
		£	£
	Bank loans (see note 19)	72,067	90,867
	Aegis Charitable Trust 22/23 Income	<u>112,500</u>	-
		<u>184,567</u>	<u>90,867</u>

continued...

HELEN ARKELL DYSLEXIA CHARITY

**NOTES TO THE FINANCIAL STATEMENTS - continued
for the year ended 31 August 2021**

19. LOANS

The charity has made use of the Coronavirus Business Interruption Loan Scheme (CBIL). £94,000 has been borrowed over 6 years where the interest (3.2% per annum) for the first 12 months is covered by a government grant. The associated costs and grant income have been reflected in the SOFA.

20. LEASING AGREEMENTS

Minimum lease payments under non-cancellable operating leases fall due as follows:

	2021 £	2020 £
Within one year	17,116	17,949
Between one and five years	<u>5,674</u>	<u>9,457</u>
	<u>22,790</u>	<u>27,406</u>

21. MOVEMENT IN FUNDS

	At 1.9.20 £	Net movement in funds £	Transfers between funds £	At 31.8.21 £
Unrestricted funds				
General fund	62,649	(29,108)	25,790	59,331
Restricted funds				
Downlands Educational Trust	25,790	-	(25,790)	-
Restricted Bursaries	23,733	8,364	-	32,097
FAST Projects	2,145	(2,145)	-	-
Aegis Charitable Trust	<u>-</u>	<u>30,349</u>	<u>-</u>	<u>30,349</u>
	<u>51,668</u>	<u>36,568</u>	<u>(25,790)</u>	<u>62,446</u>
TOTAL FUNDS	<u>114,317</u>	<u>7,460</u>	<u>-</u>	<u>121,777</u>

Net movement in funds, included in the above are as follows:

	Incoming resources £	Resources expended £	Movement in funds £
Unrestricted funds			
General fund	1,219,117	(1,248,225)	(29,108)
Restricted funds			
Restricted Bursaries	99,250	(90,886)	8,364
FAST Projects	-	(2,145)	(2,145)
Aegis Charitable Trust	<u>37,500</u>	<u>(7,151)</u>	<u>30,349</u>
	<u>136,750</u>	<u>(100,182)</u>	<u>36,568</u>
TOTAL FUNDS	<u>1,355,867</u>	<u>(1,348,407)</u>	<u>7,460</u>

continued...

HELEN ARKELL DYSLEXIA CHARITY

NOTES TO THE FINANCIAL STATEMENTS - continued
for the year ended 31 August 2021

21. MOVEMENT IN FUNDS - continued

Comparatives for movement in funds

	At 1.9.19 £	Net movement in funds £	Transfers between funds £	At 31.8.20 £
Unrestricted funds				
General fund	118,665	(67,962)	11,946	62,649
Restricted funds				
Downlands Educational Trust	40,478	(14,688)	-	25,790
Farnham Institute Charity	630	(630)	-	-
Restricted Bursaries	5,155	30,524	(11,946)	23,733
FAST Projects	<u>9,390</u>	<u>(7,245)</u>	<u>-</u>	<u>2,145</u>
	<u>55,653</u>	<u>7,961</u>	<u>(11,946)</u>	<u>51,668</u>
TOTAL FUNDS	<u><u>174,318</u></u>	<u><u>(60,001)</u></u>	<u><u>-</u></u>	<u><u>114,317</u></u>

Comparative net movement in funds, included in the above are as follows:

	Incoming resources £	Resources expended £	Movement in funds £
Unrestricted funds			
General fund	1,101,756	(1,169,718)	(67,962)
Restricted funds			
Downlands Educational Trust	-	(14,688)	(14,688)
Farnham Institute Charity	-	(630)	(630)
Restricted Bursaries	92,175	(61,651)	30,524
FAST Projects	<u>-</u>	<u>(7,245)</u>	<u>(7,245)</u>
	<u>92,175</u>	<u>(84,214)</u>	<u>7,961</u>
TOTAL FUNDS	<u><u>1,193,931</u></u>	<u><u>(1,253,932)</u></u>	<u><u>(60,001)</u></u>

continued...

HELEN ARKELL DYSLEXIA CHARITY

**NOTES TO THE FINANCIAL STATEMENTS - continued
for the year ended 31 August 2021**

21. MOVEMENT IN FUNDS - continued

A current year 12 months and prior year 12 months combined position is as follows:

	At 1.9.19 £	Net movement in funds £	Transfers between funds £	At 31.8.21 £
Unrestricted funds				
General fund	118,665	(97,070)	37,736	59,331
Restricted funds				
Downlands Educational Trust	40,478	(14,688)	(25,790)	-
Farnham Institute Charity	630	(630)	-	-
Restricted Bursaries	5,155	38,888	(11,946)	32,097
FAST Projects	9,390	(9,390)	-	-
Aegis Charitable Trust	-	30,349	-	30,349
	<u>55,653</u>	<u>44,529</u>	<u>(37,736)</u>	<u>62,446</u>
TOTAL FUNDS	<u>174,318</u>	<u>(52,541)</u>	<u>-</u>	<u>121,777</u>

A current year 12 months and prior year 12 months combined net movement in funds, included in the above are as follows:

	Incoming resources £	Resources expended £	Movement in funds £
Unrestricted funds			
General fund	2,320,873	(2,417,943)	(97,070)
Restricted funds			
Downlands Educational Trust	-	(14,688)	(14,688)
Farnham Institute Charity	-	(630)	(630)
Restricted Bursaries	191,425	(152,537)	38,888
FAST Projects	-	(9,390)	(9,390)
Aegis Charitable Trust	37,500	(7,151)	30,349
	<u>228,925</u>	<u>(184,396)</u>	<u>44,529</u>
TOTAL FUNDS	<u>2,549,798</u>	<u>(2,602,339)</u>	<u>(52,541)</u>

Transfers between funds

During the year £25,790 of a total restricted donation of £60,000 has been derestricted, with permission from the donor, to be added to the general fund.

continued...

HELEN ARKELL DYSLEXIA CHARITY

NOTES TO THE FINANCIAL STATEMENTS - continued for the year ended 31 August 2021

22. FUNDS

The Bursary Fund

The out-going resources represent bursaries granted during the year.

Downlands Educational Trust

This donation was provided in the 18/19 financial year. The donor specified that their donation should support i) a Families and Schools Together project (FAST) to a school in special need (£3,000 spent during the 18/19 financial year); and ii) should provide bursary-funded support to children from lower income backgrounds in certain counties of the UK (£60,000 spent during the previous and current years, of which £25,790 was derestricted by the donor in the current 20/21 financial year).

Restricted bursaries

A number of donors specified that their donations should not only be used for provision of bursary-funded support to people from lower-income backgrounds, but that such donations should also carry additional restrictions including factors such as age of beneficiary, county of residence etc. Such donations have either already been spent during the year or are ear-marked to be spent in the subsequent year. One donation of £19,000 from The Linbury Trust was partly restricted to the provision of bursary-funded support (£10,000), and partly restricted to the implementation of a new IT system for managing bookings (£9,000). This represents the first instalment of a four-year commitment.

FAST projects

A restricted donation of £22,722 was received from The Kusuma Trust towards the end of the current 20/21 financial year. This is for the purpose of supporting six schools in special need, by means of the Charity's Families and Schools Together projects (FAST). All six of such projects are scheduled to take place in the 21/22 financial year, with six schools having been selected for such support, all of whom have higher than average numbers of pupils on Pupil Premium (free school meals).

The Aegis Charitable Trust

A restricted donation of £300,000 was received from The Aegis Charitable Trust towards the end of the current 20/21 financial year. This is for the purpose of undertaking three projects over the next two years: i) expanding the Charity's fundraising team; ii) providing bursary-funded support to individuals from lower-income backgrounds; iii) providing specialist training to teachers and teaching assistants from State Schools. The income from this donation will be reflected on a time-apportion basis in accordance with the terms of the grant. Consequently £37,500 has been recognised within the 20/21 financial year, with £262,500 being deferred in the balance sheet to future years (£150,000 to 21/22; and £112,500 to 22/23).

23. POST BALANCE SHEET EVENTS

In the year ending 31st August 2022, £150,000 of deferred income from The Aegis Charitable Trust will be recognised as restricted income (see above). £50,000 has been derestricted, with the agreement of the donor, and transferred to the general fund to help with the day to day running costs of the Charity. This will be redesignated for its original purposes when the Charity's reserves return to normal levels, once the adverse financial impact of the Covid-19 pandemic has passed.

