



THE  
HEALTH TREE  
FOUNDATION



Northern Lincolnshire  
and Goole  
NHS Foundation Trust

# Inspiring change in your NHS

Annual Report  
2023/2024



# Contents

3

## Welcome

Our annual report  
2023/2024

4

## A Message

From our Chair

5

## A Message

From our Patron

6

## Our Hospitals

Goole, Scunthorpe  
& Grimsby

8

## Meet Scrubs!

Our Mascot

9

## Our Vision & Mission

10

## Highlights of the Year

22

NHS Charities  
Together & The  
Circle of Wishes

23

## Gift in Wills

Our annual report  
2023/2024

24

## Lottery

Join \* Play \* Win

25

## Financial Information

29

Reserves Policy  
& Investments

30

## Our Trustee Gives Thanks

32

Reference &  
Administrative  
Details

33

Structure,  
Governance &  
Management

34

Statement  
of Trustees'  
Responsibilities

35


## Independent Auditors Report

38

## Financial Statements



# Welcome to our Annual Report for **2023/24**



We have had an incredible year and that is thanks to you  
– our local communities, businesses and supporters.

The support we have received has been heart-warming – you have come together to support your local hospitals and community health services. We have been overwhelmed and humbled by the generosity you have all shown.

You have rallied together to support your NHS whether that be donating wonderful gifts to both staff and patients, volunteering your time to help improve your hospitals, or contributing monetary donations.

We could not have achieved what we have this year without the continuous support of our corporate supporters, volunteers, crafters, bakers, fundraisers and those who have kindly remembered us in their Will.

Thank you so much to each and every one for the continued support you provide to your local hospitals. Your help will always be remembered and will be a lasting part of your local hospital for years to come.



**Lucy Skipworth**

Charity Manager  
The Health Tree  
Foundation



**Clare Woodard**

Head of Business  
Development  
HEY Smile Foundation

# A Message from our Chair

It's hard to think that a year has passed since I last wrote a Foreword to the Health Tree Foundation Annual Report. In that time, your charity has gone from strength to strength. It's "your" charity because Health Tree Foundation exists to enhance the patient experience for everyone who is cared for by the Northern Lincolnshire and Goole NHS Foundation Trust. That person may be an in-patient, out-patient or a patient in the community. This is achieved by using donations and grant monies to provide enhancements, facilities and various items that would not normally be provided by core NHS funds. If you, as a patient, carer, family member, visitor or staff member have an idea for an improvement, then do get in touch with "your" charity and Make a Wish! The Health Tree Foundation Team will help you every step of the way.

But Wishes cannot exist without "your" generosity and I want to thank everyone who donates to the Health Tree Foundation. That may be a simple monetary gift, perhaps a thank you for great care, an organised fundraising event, a local business sponsorship or possibly a legacy. No matter how it is achieved, your valued support is vital. It is vital so that the Health Tree Foundation can enhance the new hospital Emergency Departments, can help to make more Trust aspects dementia friendly, can launch appeals such as those for the new Scunthorpe and Grimsby Community Diagnostic Centres, and make an everyday difference with the many, minor enhancements that have been introduced throughout the Trust this year.

Please take time to browse this report, see the good that is done, see the generosity and inventiveness displayed and see the genuine kindness that shines forth.

Finally, please accept my humble appreciation and thanks together with that of my fellow Trustees and the Foundation Team for everyone's support for "your" charity, the Health Tree Foundation.



**Neil Gammon**

*Independent Chair of  
Health Tree Foundation  
Trustees' Committee*

# A Message from our Patron



As I said in last year's Annual Report, it has been an absolute delight to be associated with the Health Tree Foundation as your Patron and it is hard to believe that my 3 year tenure has come to an end. Like all of you, my family and I are users of the wonderful NHS facilities that The Northern Lincolnshire and Goole NHS Foundation Trust provides. I have been very pleased to see the £65 million investment that is being made across our hospitals and community services. That has provided an opportunity for the Health Tree Foundation to enhance these new areas with some extras to improve patient experiences; items such as charging points, skylight ceiling tiles and attractive wall murals. In addition, younger patients are catered for with games and toys to keep them entertained and at ease whilst they wait to be seen. These are all items which the NHS would not fund from core monies and the fact that such purchases can be made is thanks to our army of fundraisers and those individuals and corporate or social groups who donate in so many other ways. Even during these difficult, personal financial times for many of you, the Health Tree Foundation funds are continually topped up, for which I thank every one of you, patients, families and staff members alike.

May I ask you to maintain this wonderful support as the Trust moves forward and please encourage others to join in this selfless activity. I am confident that your Trust charity will go from strength to strength with such backing. Thank you again.



**Sir Reginald  
Adrian Berkeley  
Sheffield**

*8th Baronet DL*

# The Health Tree Foundation



Goole and District Hospital



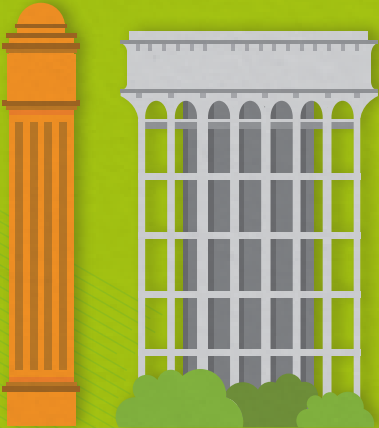
On site Urgent Treatment Centre

A centre of excellence for ophthalmology

Welcome to Goole

Small and purpose built community hospital

Specialist rehabilitation services, including for brain injuries



Diana, Princess of Wales Hospital



A dedicated children and family services building with en-suite maternity rooms

State-of-the-art diagnostic facilities

24 hour emergency department



Welcome to Grimsby

Scunthorpe General Hospital



Hyperacute stroke unit

24 hour emergency department

All the major specialties you'd expect from a district general hospital

Welcome to Scunthorpe

State-of-the-art diagnostic facilities



# Meet Scrubs!



Scrubs the Bear is the large and cuddly mascot for NHS charity The Health Tree Foundation (HTF).

Don't be alarmed if you spot Scrubs at your local hospital! He will be there to entertain youngsters on the children's wards, warm the hearts of the Trust's adult patients, and encourage the communities to raise funds for each hospital.



# About us



At the Health Tree Foundation, we will ensure that funds, however big or small, are used to make a positive difference to our community's healthcare.

With invaluable support from our local communities, the Health Tree Foundation charity works in partnership with the Northern Lincolnshire and Goole NHS Foundation Trust.

Your help means we can provide acute hospital and community services to a population of over 400,000 people across North and North East Lincolnshire and the East Riding of Yorkshire.

We hope to inspire, engage, and channel the charitable intent of your local community, helping to turn donations of time and money into making your NHS Sparkle.



## Our Vision

A community in which everyone can benefit from the best healthcare in the UK.

## Our Mission

We inspire, engage and channel the charitable intent of people, helping them to donate and make a real difference to the quality of people's health care where it really matters.

## Our Promise

Above all we will ensure that funds, however big or small, are used to the best effect to make a positive difference to our community's healthcare.



# Highlights of the year 2023/2024

From on-line fundraising events to skydiving events and everything in between. Here are some of the highlights of the year.



## Move More Launch

March

*Diana Princess of Wales Hospital, Grimsby*

The Health Tree Foundation team launched their Move More In March campaign to encourage the local community to move more and raise funds for our Little Lives Appeal, Trustwide. Keelby Primary School took part in this event and even got a visit from our mascot, Scrubs the Bear. The pupils in the school raised over £500, well done!



## New Equipment - Sara Steady for SDEC and IAAU!

*Diana Princess of Wales Hospital, Grimsby*

March

Thanks to your donations, we have been able to purchase a Sara Steady for SDEC and IAAU. Patients in our care in hospital who need support standing but do not require a hoist can benefit from a Sara Steady. This standing aid helps to make the transfer of patients much safer and is a great help to nurses. This equipment also encourages patient's independence to stand aided.



## An Amazing Gift In Kind

March

*Diana Princess of Wales Hospital, Grimsby*

The Health Tree Foundation received an amazing Gift In Kind from Mr and Mrs Bell. This incredible portrait of Princess Diana which has been created using stamps! Mr and Mrs Bell first set eyes on this beautiful piece of artwork whilst abroad on holiday and just couldn't leave it behind and brought it back to the UK. This stunning picture now proudly hangs in the main entrance of Diana Princess of Wales Hospital, Grimsby!



# Easter Deliveries

All sites

April

Over the Easter period, we received so many kind and generous gifts for all the children who are spending Easter in our hospitals. Thank you so much for all the kind donations and visits!



# Move More Launch

March

## MOVE MORE IN MARCH

- Do you fancy a challenge?
- How much can you raise?
- How many miles can you do?



Scan the QR code to donate



Round up your friends and families, put your trainers on and join us in our 'Move More in March' Walking Challenge. Raising money for our Little Lives Appeal for our hospitals.

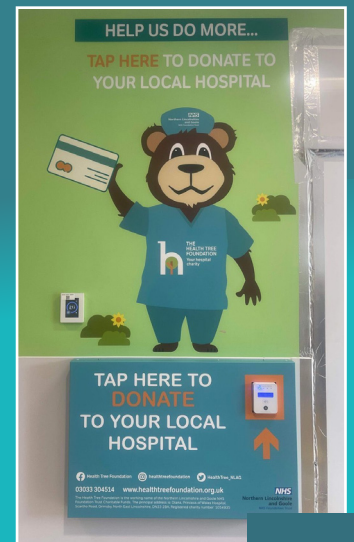
Registered charity number 1056

# Our Tap to Donate in Scunthorpe General Hospital's A&E department went live!

Scunthorpe General Hospital

May

We have made donating to The Health Tree Foundation even easier with our contactless donation points!



# Highlights of the year 2023



## It was Coronation Day!

All sites

May

The Health Tree Foundation were so happy to provide wards with a pack of decorations to help celebrate this historical day with our patients.



## A generous donation of £1,250!

May

Diana Princess of Wales Hospital, Grimsby

We would like to say a huge thank you to myenergi for their generous donation of £1,250 to the Neonatal Intensive Care Unit at Diana Princess of Wales Hospital in Grimsby. A cheque presentation was held at Blundell Park at one of the GTFC matches.



## Thank you cards!

Scunthorpe General Hospital

May

We would like to say a heart-felt thank you to the pupils from St Bedes Academy, Scunthorpe for these wonderful cards they made for all the amazing nurses in recognition of International Nurses Day at Scunthorpe General Hospital.



May

## Walking Challenge

Diana Princess of Wales Hospital, Grimsby

We would like to say a huge thank you and well done to Shaun who took part in a walking challenge to raise money to help patients recovering from Covid at Diana, Princess of Wales Hospital, Grimsby. Shaun raised over £800!



# Look how much fun was had on the Disney Ward!

Scunthorpe General Hospital

May

Spiderman and Rapunzel made a visit to the ward to sing, pull funny faces and even joined in building Lego with the children.

On behalf of the Disney Ward, we would like to say a massive thank you to Little Enchantments for helping to put a smile on little faces.



# Strandguide LTD Donation

Diana Princess of Wales Hospital, Grimsby

June

We would like to say a huge thank you to all at Strandguide LTD for their amazing efforts in raising money for the Amethyst Ward at Grimsby's Diana Princess of Wales Hospital. A cheque was presented for a fantastic £1,432.90! Your donation will make such a difference in improving patient experience on the Amethyst Ward.

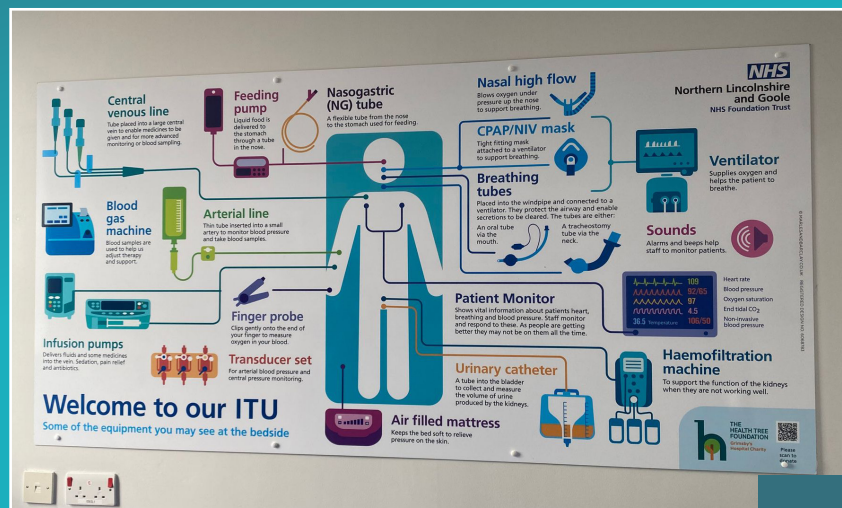


# Information Board

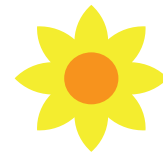
Diana Princess of Wales Hospital, Grimsby

June

We are delighted to share another brilliant wish which has been granted thanks to your generous donations. A new relatives information board in ITU. This fantastic and informative board is designed to help relatives understand the purpose of different types of equipment used, helping reduce their anxiety and making their experience with Critical Care a more positive and understandable one whilst with loved ones.



# Highlights of the year 2023



## The Mayor of Grimsby

June

*Diana Princess of Wales Hospital, Grimsby*

Councillor Ian Lindley, who works in the Theatres at Grimsby's Diana Princess of Wales Hospital, as an Operating Department Practitioner, was recently elected Mayor. He chose The Pink Rose Suite as one of his charities to raise money for, through the Health Tree Foundation. The unit is close to his heart as his wife and Mayoress, Helen Lindley, works as an Advanced Nurse Practitioner. The couple also have a special connection with the unit.

Ian said: "I met my wife during a social event to raise money for the Pink Rose Suite in 2007, so it's great I'm now able to support the unit in this way. I will be doing various events throughout the year to raise funds, such as a Mayor's Ball and charity nights. "With us both working at the hospital and Helen working on the unit, it felt like a natural choice. The staff are fantastic and I see first-hand the terrific care patients receive."



## Book donation

June

*Diana Princess of Wales Hospital, Grimsby & Scunthorpe General Hospital*

We would like to thank local author and the Northern Lincolnshire and Goole NHS Foundation Trust staff member, Debbie Webb, for her very kind donation of her collection of books which she delivered to both children's wards at Grimsby's Diana Princess of Wales Hospital and Scunthorpe General Hospital. The children will love hearing about the adventures her little dog gets up to. Thank you so much Debbie.



## Welcome Jemma!

July

We are delighted to introduce you to Jemma Qualter who joined the Health Tree Foundation Team in July.

Jemma is our new Central Admin and Fundraising Support Trustwide. Jemma has worked in the local community of Scunthorpe in her previous role and is no stranger to the world of fundraising and charity support.



## New uniforms for our volunteers

July

All sites

We are so grateful for our volunteers who give up their time to help support staff, patients and their families within the hospital. Thanks to your donations, we have been able to fund a new uniform to make it easier for patients and visitors to spot our amazing helpers. Next time you see them, be sure to give them a smile and a thank you.



## Generous Donation!

July

*Diana Princess of Wales Hospital, Grimsby*

We would like to say a big thank you to Cllr Steve Beasant for his generous donation of £220.75 for our Little Lives Appeal for Grimsby's Diana Princess of Wales Hospital.



July

## NHS Big Tea Party

All sites

This July we celebrated the NHS's 75th Birthday. Wards and departments across our Trust celebrated NHS Big Tea by hosting tea parties on their ward.



## Waiting Room Makeover

August

*Scunthorpe General Hospital*

The waiting room in the Urology Department at Scunthorpe General Hospital has had a makeover. We have changed a tired seated area into a bright, inviting space for patients to feel relaxed while waiting to be seen. This was made possible thanks to donations from the community and the staff taking part in their own fundraising endeavours.



# Highlights of the year 2023

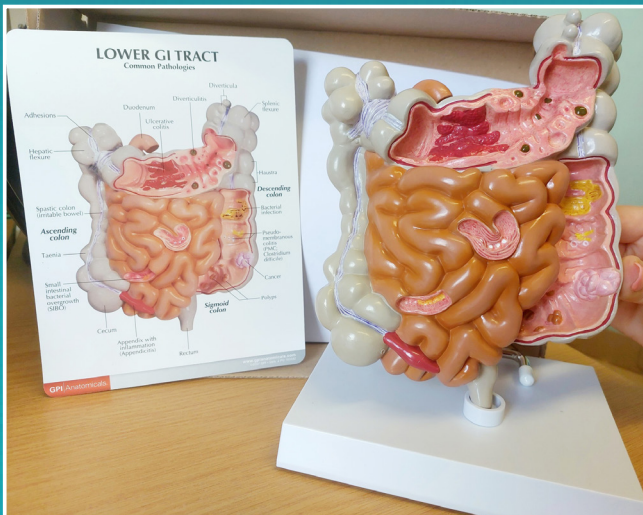


## GI Tract Model

August

Scunthorpe General Hospital

With your generous donations, we've been able to purchase a Lower GI Tract with Pathologies model for our Surgery and Critical Care Team at Scunthorpe General Hospital. This model will help educate our patients on the findings of their investigations when attending our outpatient's clinic to discuss their results.



## Colouring Books

August

All sites

We have funded our very own Scrubs Colouring books. These will be a great distraction to patients while visiting our hospitals for appointments and treatment.



## Ashby Golf Club Donation!

September

Scunthorpe General Hospital

We would like to thank Ashby Decoy Golf Club for raising an amazing £2,500 for Scunthorpe Stroke Unit, at their annual charity Golf Day!



## Skydive

August

A massive well done to our very brave fundraisers, who took part in our Skydive event!



September

## Westfield Alpacas

Scrubs met up with his new friend, Westfield Alpacas!



October

## Mount Snowdon

Scunthorpe General Hospital

A huge well done to our team of staff who climbed Yr Wyddfa (Mount Snowdon). They are raising funds for equipment to benefit patients needing surgery. Despite the dreadful weather on the day, they still managed the climb and have raised more than £1,700!!



## Tony's Charity Walk

Diana Princess of Wales Hospital, Grimsby

September

We want to say a huge well done to Tony for achieving his charity walk in Cleethorpes. Tony was supported and cheered on by such wonderful family and friends who were taking donations along the way. The Neuro Rehab Centre in Goole are truly grateful for your fundraising!



October

## The Pink Pig Farm

Scrubs visited The Pink Pig Farm in Scunthorpe!



# Highlights of the year 2023



## Mount Snowdon

October

Scunthorpe General Hospital

Thank you to Emma and Lee Clay for yet another fabulous fundraising event!

Your Halloween party was enjoyed by all and a real success! And on top of this, your decorated spooky garden also added to your fundraising total.

Thank you for your continuing to support our Neonatal Intensive Care Unit at Scunthorpe General Hospital.



## Charity Champion Award

November

Congratulations are in order for Sharon, on receiving The Health Tree Foundation Charity Champion Award at the Our Stars Event on Friday 24th November 2023.

Thank you for everything you are doing for the Children's Development Centre garden, your efforts do not go unnoticed!



## NICU Library

October

Diana Princess of Wales Hospital, Grimsby

We funded a neonatal library on the Neonatal Intensive Care Unit (NICU) at Diana, Princess of Wales Hospital, Grimsby. This will enable parents as well as siblings to read to their new baby while receiving care on the NICU. Reading supports early brain development and language skills as well as providing comfort for the baby through the sounds of familiar voices.



Thanks to your donations and continuing support we can make these wishes come true!

## Jax's Fundraising

November

*Diana Princess of Wales Hospital, Grimsby*

In November, we met up with the amazing Jax and received a fabulous donation for the Rainforest Ward at Diana, Princess of Wales Hospital in Grimsby.

Jax and his team mates, took part in a sponsored walk at midnight from Cleethorpes Pier to Grimsby Hospital. With the money raised, they managed to purchase two PlayStation 5 consoles and games as well as donating an incredible £1,000 too!

Thank you so much those of you who have supported Jax and his team mates, you're all Health Tree Heroes!

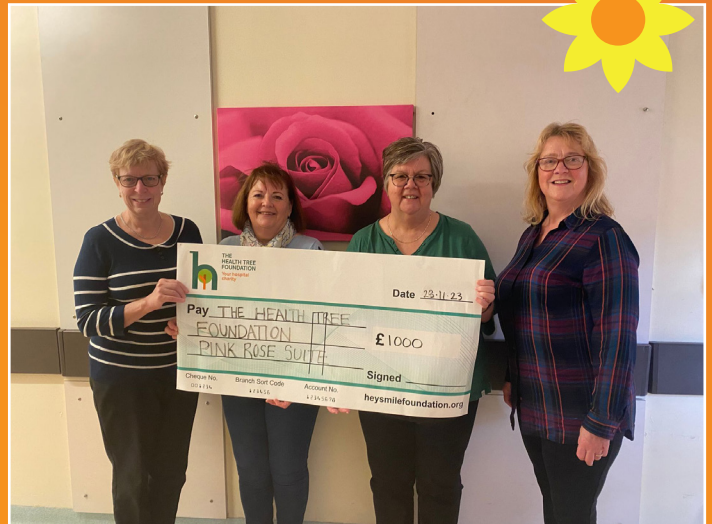


## Scunthorpe Rugby Club Donation

November

*Diana Princess of Wales Hospital, Grimsby*

A huge thank you to the ladies at Scunthorpe Rugby Club, who raised £1,000 for The Pink Rose Suite at Diana, Princess of Wales Hospital, Grimsby.



## Grimsby Cars Event

December

*Diana Princess of Wales Hospital, Grimsby*

We were absolutely blown away with the final total from Grimsby Cars Ltd summer event!

A huge £11,000 was raised for the NICU ward at Diana, Princess of Wales Hospital, Grimsby.



# Highlights of the year 2023



December

## Santa Run

*Diana Princess of Wales Hospital, Grimsby*

We hosted Keelby Santa Run, and what a great day it was!



## Christmas Gifts!

December

*All sites*

Over the Christmas period, we received so many kind and generous gifts for all the patients who spent Christmas in our hospitals. Thank you so much for all the kind donations and visits!



# Highlights of the year 2024

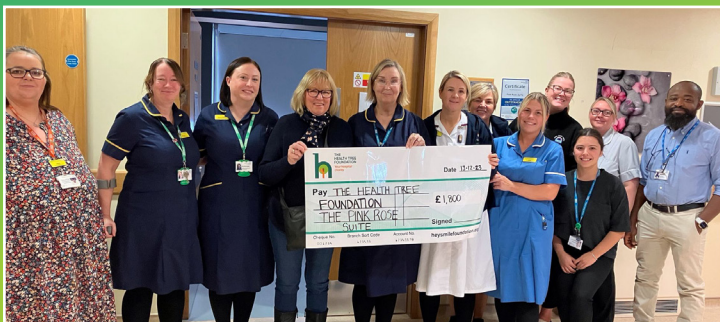


## Pauline Thompson Fundraising

January

*Diana Princess of Wales Hospital, Grimsby*

We are so pleased to announce that our amazing fundraiser, Pauline Thompson, has reached a staggering £10,000 of donations. Pauline has been fundraising for The Pink Rose Suite for several years and has now reached this fantastic figure. Well done Pauline, your continued support means so much to us!



## Crosby School

March

*Scunthorpe General Hospital*

In March, we visited Crosby School in Scunthorpe with our mascot Scrubs! The children are taking part in our 'Move More In March' campaign, raising money for our Little Lives Appeal. Each year group is walking laps around the field, which will total a fantastic 101.5km.



## Knitted Hearts

*Scunthorpe General Hospital*

We received a lovely donation of knitted hearts from Dunelm Scunthorpe's Knit and Stitch group. Thank you so much ladies - these are perfect for our Critical Care wards and end of life patients, who hold onto these in their last moments and give great comfort to their loved ones.

January

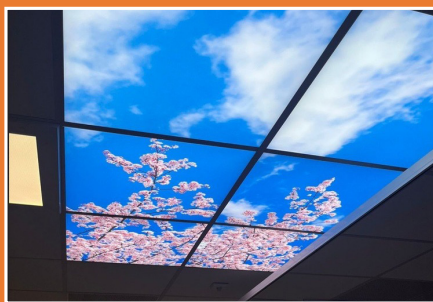


February

## New Skylights

*Diana Princess of Wales Hospital, Grimsby*

The Health Tree Foundation recently funded these beautiful skylights in the new Same Day Emergency Care building at Diana, Princess of Wales Hospital, Grimsby. These make the area feel less clinical, and provide a brighter atmosphere, helping patients to feel more relaxed while they are receiving care.



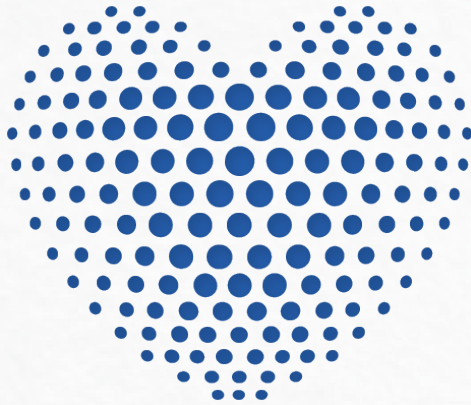
## Reborn Doll

February

*Goole and District Hospital*

Thank you to Joanne at Hey Credit Union, for the kind donation of a reborn doll, for dementia patients at Goole District Hospital. This will really make a difference to patients staying with us, thank you so much for your kindness.





# NHS CHARITIES TOGETHER

We have received Community Grants of £152,000 from NHS Charities Together in 2023/24.

The Community Grants have been awarded to charities in the local community.

The Development Grant 23/24 will be used to support Operations, Learning and Evaluation and Fund Raising allowing us to develop the Charity, improve our processes and create a new role of Digital Fundraising within our Charity.

**Thank you NHS Charities Together!**

## The Circle of Wishes

The Circle of Wishes has been open to requests from staff and patients for items which would improve patient care within our hospitals.

We received 286 different wishes throughout the 2023/24 period and invested £451,000 in granting wishes.

*Health Tree Foundation invested £451,000 on wishes in 2023/24.*



# Gift in Wills

Over the past few years, The Health Tree Foundation has benefited greatly from legacy gifts left in people's Wills.

**In 2023/24 we received £248,000 in legacy income!**

Choosing a charity to include in a Will is a very personal choice. You may have a connection with one of the hospitals we support or perhaps The Health Tree Foundation has helped you or a loved one in the past. Or you may simply wish to support your local NHS.

After providing for your loved ones, a gift to The Health Tree Foundation is another way of showing how much you care - because small or large, your gift will help to improve health and wellbeing for your family and everyone in Northern Lincolnshire and Goole.

Many of the gifts we receive are from people who want to 'give something back' to the hospitals out of gratitude for the care and support they may have received or to say thank you for the care of a loved one.

If you would like more information on how easy it is to support your local hospital charity through a gift in your Will or to learn more about the difference we have been able to make through generous donations, please contact us at **[hello@healthtreefoundation.org.uk](mailto:hello@healthtreefoundation.org.uk)**

# HTF Lottery



The Health Tree Foundation fundraising lottery has been a great success. Tickets are £1.00 each. A weekly draw with a jackpot of £1,000 and 80 prizes of £10 takes place each Friday. Raise funds for your local hospital charity via weekly draws and have the chance to win up to £10,000!

A promotional poster for the HTF Lottery. The background is green. At the top, it says "Join ★ Play ★ Win" in white. Below this is a circular photo of a group of people, including a child and a mascot, giving thumbs up. To the right of the photo are three colored circles containing prize information: a blue circle for "UP TO £10,000 ROLLOVER PRIZE", a pink circle for "80 PRIZES OF £10", and a yellow circle for "£1,000 WEEKLY JACKPOT PRIZE". At the bottom, there are logos for "Your Charity Lottery", "THE HEALTH TREE FOUNDATION Your hospital charity", "BeGambleAware.org", and an "18+" age restriction icon.

**Join ★ Play ★ Win**

**UP TO  
£10,000  
ROLLOVER  
PRIZE**

**80  
PRIZES OF  
£10**

**£1,000  
WEEKLY  
JACKPOT  
PRIZE**

**Your Charity Lottery** | **h** THE HEALTH TREE FOUNDATION Your hospital charity | **BeGambleAware.org** <sup>®</sup> **18+**

# A review of our finances, achievements & performance

## Public Benefit

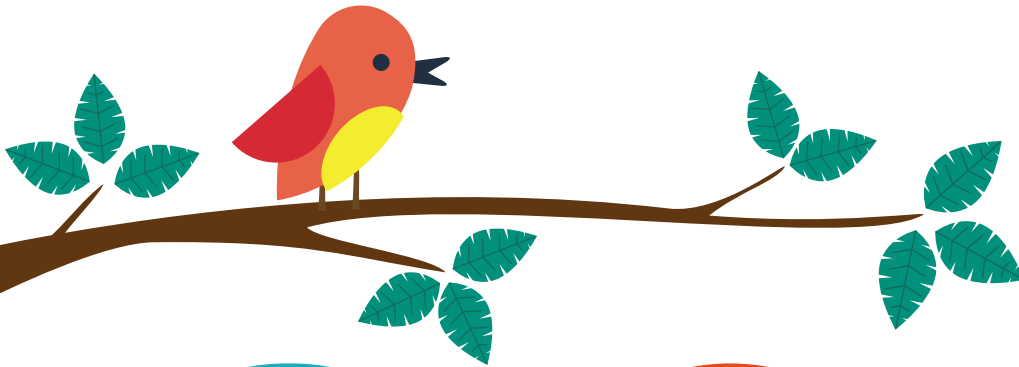
As a Charity, our main purpose is to benefit the public. Our ambition is to transform donations of time and money into making the NHS sparkle for patients throughout our local community. We couldn't do this without donations, legacies and investment, which continue to be our main sources of income. Our total assets, income and expenditure for this financial year is set out in the next few pages.

## Assets

To support The Health Tree Foundation's activities, the Charity continues to maintain a healthy cash balance and investment portfolio. The stock market continues to be volatile and changes within it have impacted the valuation of our investments, however these are reviewed on a regular basis by The Health Tree Foundation Trustees Committee to explore the potential for taking mitigating actions.

## The Public Perception Test

When considering its use of funds, a person should ask him or herself; Would someone who puts a pound in a collecting bucket be happy for it to be spent this way? Would you be proud to tell a donor about this expenditure, and the difference it is making, or would you find yourself defending a purchase which you know should really come from your core budget?



### Total Assets

2023/2024

**1,423**

(£,000)

2022/2023

**1,412**

(£,000)

### Net Assets

Increase/(Decrease)

2023/2024

**11**

(£,000)

2022/2023

**(598)**

(£,000)

### Valuation of Investments

Gain/(Loss)

2023/2024

**114**

(£,000)

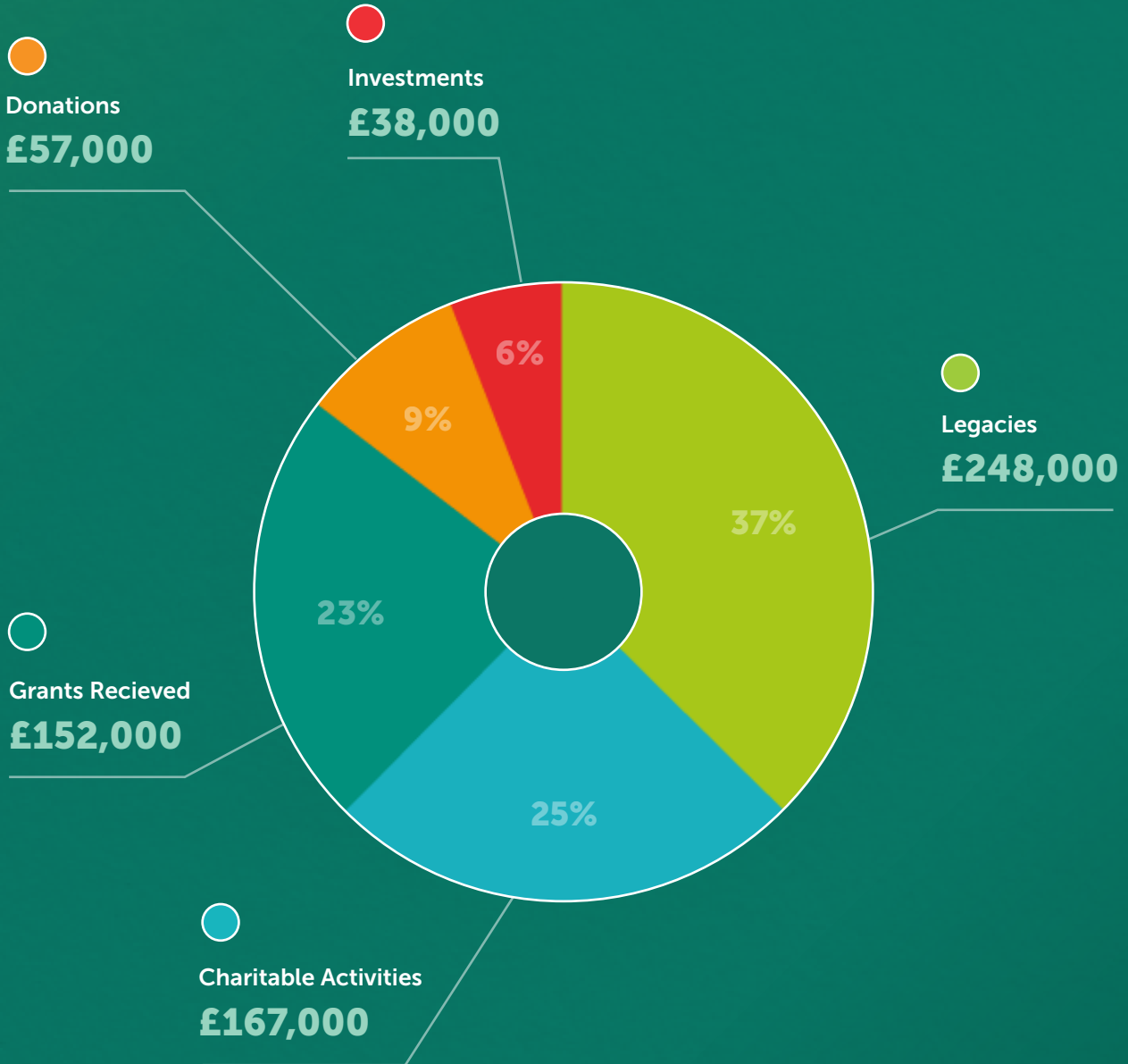
2022/2023

**(89)**

(£,000)

# Income

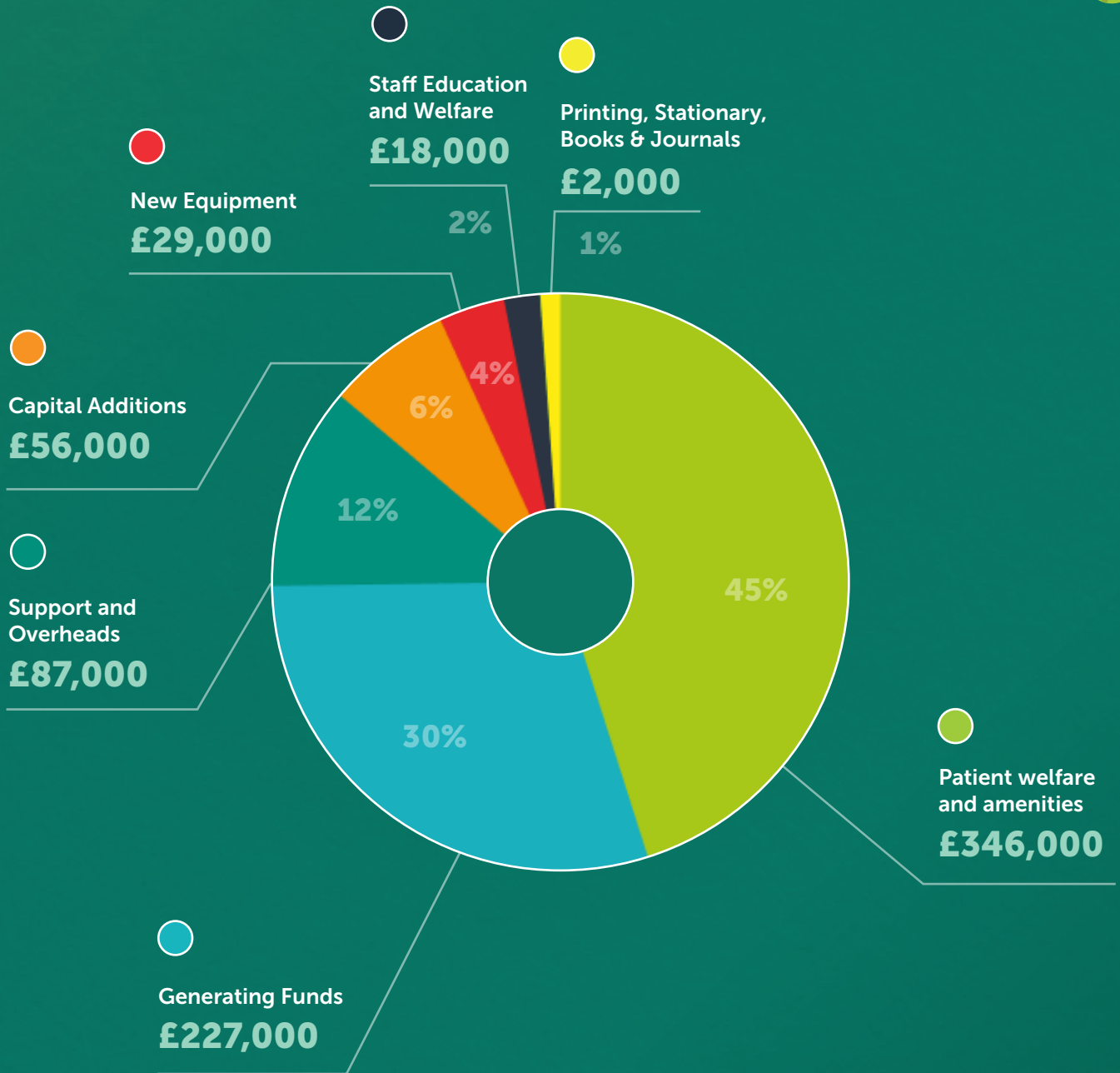
## 2023/2024



**Total Income:**  
**£662,000**

# Expenditure

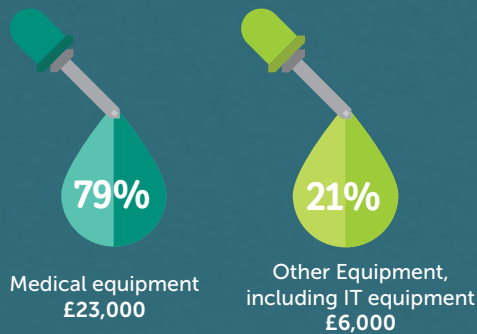
## 2023/2024



**Total Expenditure:  
£765,000**

# New Equipment

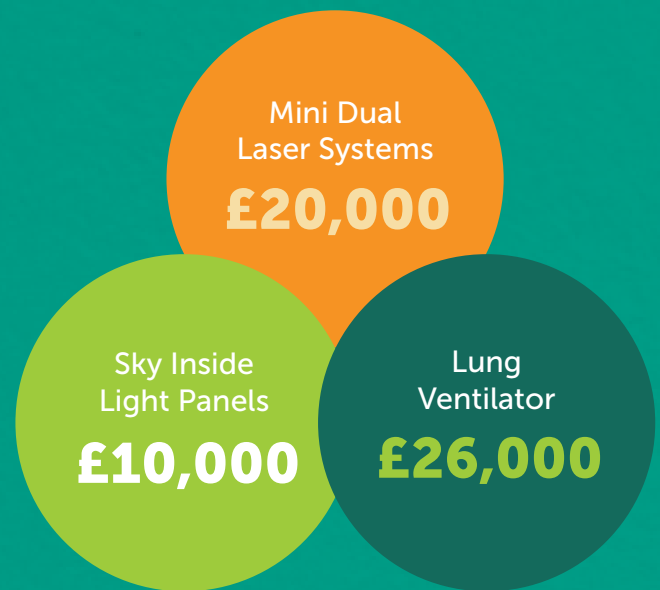
Buying new equipment represents a vital and valuable contribution to enhancing clinical and medical care across our region. Purchases range from small items costing a few pounds each, through to specialist diagnostic equipment costing several thousand pounds.



**Total: £29,000**

# Capital Additions

Capital additions reflect the money we spend on buying new assets, or improving existing ones, to further the quality of care that patients receive across our hospital sites.



**Total: £56,000**



# Staff Education and Welfare

We're committed to delivering meaningful benefits to patients and their families. To do this, we need highly-skilled staff who can ensure we realise our ambitions. Training and developing our people is key to this, as is staff welfare.

# Performance Management

The Health Tree Foundation does not have any direct employees. Fundraising and administration staff are seconded to the Charity from the Hull & East Yorkshire Smile Foundation, helping us keep costs down while providing the skills needed to make a real difference. These seconded employees manage our Charity, together with employees from the Northern Lincolnshire & Goole NHS Foundation Trust, ensuring we keep administration costs to a bare minimum.

Foundation Trust staff work closely with The Health Tree Foundation Trustees Committee (formerly known as Charitable Funds Committee) and the Equipment Group to identify priorities, assess the suitability of funding requests and make sure the money we spend makes a real difference to the communities we serve.

# Reserves Policy & Investments

## Reserves Policy Statement

The Trustees have updated the Charity's reserves policy following a review of the guidance set out by the Charity Commission, and the significant changes to Charities Statement of Recommended Practice (SORP) 2019.

The Trustees are under a legal duty to apply charitable funds in furtherance of charitable objectives within a reasonable time of receiving them. Under normal circumstances, a period of 12 months is considered reasonable; therefore the Charity would expect to hold reserves approximately equal to the running costs. This amounts to **£314,000** per year for fundraising staff costs, office costs and governance costs. The Trustees recommend that in addition to running costs, general expenditure costs for six months are maintained in reserves. Based on the 2023/2024 financial year, this would be **£226,000**. Therefore the minimum amount required to be held in reserves is **£540,000**.

The Trustees recognise that it may be necessary in the future to achieve the target level of reserves by retaining a portion of the income from investments. The Trustees consider it necessary to retain reserves over the longer term to:

- Minimise the risk should levels of donated income reduce significantly that the Charity cannot meet its obligations
- Hold sufficient reserves to ensure the Charity can cover its ongoing operational costs to process outstanding commitments.

The value of fixed asset investment goes down as well as up. Where values go down, funds need to be safeguarded from such losses through the level of reserves retained. The Trustees continue to review the balances held in all funds, in accordance with the provisions of the NHS Acts relating to charitable funds, to determine whether these are likely to be committed in the near future.

## Investments

The corporate Trustee invests its charitable funds with CCLA Investment Management Ltd in their Charities Official Investment Funds (COIF). Dividends are paid directly into the Charity's bank account. As of 31 March 2024 96% (2022/2023: 89%) of non-liquid funds were invested in COIF.

As of 31 March 2024, the market value of investments were: COIF Ethical Investment Fund **£1,297k** (2022/2023: £1,383k).

The Health Tree Foundation Trustees Committee regularly reviews the level of investments and undertakes market testing to ensure the Charity has the correct balance between risk and returns, and maintains adequate liquidity.

During 2023/2024 the investments gained **£114,000** (2022/2023: loss of £89,000). The stock market continues to be volatile and the Health Tree Foundation Trustees Committee regularly reviews performance to explore the potential for mitigating action.

The Trust's ethical investment policy prevents investment in companies directly involved in the production of tobacco products, alcohol and arms.

The remaining balance of the liquid reserves are held in commercial bank accounts, which total **£50,000** (2022/2023: £170,000).





## THE TRUSTEE GIVES THANKS

Northern Lincolnshire and Goole NHS Foundation Trust & Hull University Teaching Hospital NHS Trust is grateful to the many individuals, groups, associations, clubs and societies who have given generously of their time, money and bequests, to the Trust's Charitable Funds throughout the year.

On behalf of the staff and patients who have benefited from improved services and amenities they would like to express their thanks.


Approved on behalf of the Corporate Trustee



.....

Date: 08/08/2024

**Neil Gammon**, Chair of Northern Lincolnshire and Goole NHS Foundation Trust Charitable Funds and Other Related Charities



.....

Date: 08/08/2024

**Jonathan Lofthouse**, Group Chief Executive for Northern Lincolnshire & Goole NHS Foundation Trust and Hull University Teaching Hospital NHS Trust





# Reference and Administrative Details

The Main Charity, Northern Lincolnshire & Goole NHS Foundation Trust Charitable Funds and Other Related Charities, registered Charity Number 1054935 was entered on the Central Register of Charities on the 26th April 1996.

The Charitable Trust Funds, as at 31st March 2024 is constituted of an 'Umbrella Fund', which covers a total of 45 funds (2022/2023: 45).

The NHS Foundation Trust Board devolved responsibility for the on-going management of funds to the Health Tree Foundation Trustees' Committee (formerly Charitable Funds Committee) that administers the funds on behalf of the Corporate Trustee. The names of those people who serve as agents for the Corporate Trustee, as permitted under regulation 16 of the NHS Trusts (Membership and Procedures) Regulations 1990, is as follows as of 31st March 2024:

## Mr N Gammon

Independent Chair of the Health Tree Foundation Trustees Committee, Northern Lincolnshire & Goole NHS Foundation Trust

## Mr S Lyons

Chair, Northern Lincolnshire & Goole NHS Foundation Trust, Non-Executive Director

## Mr JM Lofthouse

Group Chief Executive, Northern Lincolnshire & Goole NHS Foundation Trust (Appointed August 2023)

## Dr P Reading

Chief Executive, Northern Lincolnshire & Goole NHS Foundation Trust (Resigned June 2023)

## Mr L Bond

Group Chief Financial Officer, Northern Lincolnshire & Goole NHS Foundation Trust

## Mr J Johal

Director of Estates & Facilities Management, Northern Lincolnshire & Goole NHS Foundation Trust (Resigned December 2023)

## Ms SP Liburd

Non-Executive Director

## Mrs E Monkhouse

Chief Nurse, Northern Lincolnshire & Goole NHS Foundation Trust (Resigned November 2023)

## Dr K Wood

Group Chief Medical Officer, Northern Lincolnshire & Goole NHS Foundation Trust

## Mr IP McConnell

Group Director Strategy and Partnership, Northern Lincolnshire & Goole NHS Foundation Trust (Appointed November 2023)

## Mr S Hall

Associate Non-Executive Director, Northern Lincolnshire & Goole NHS Foundation Trust

## Mrs L Jackson

Vice Chair & Non-Executive Director, Northern Lincolnshire & Goole NHS Foundation Trust

## Mr S Nearney

Group Chief People Officer, Northern Lincolnshire & Goole NHS Foundation Trust

## Mrs F Osborne

Associate Non-Executive Director, Northern Lincolnshire & Goole NHS Foundation Trust (Resigned December 2023)

## Mr S Parkes

Non-Executive Director, Northern Lincolnshire & Goole NHS Foundation Trust

## Mrs G Ponder

Non-Executive Director, Northern Lincolnshire & Goole NHS Foundation Trust

## Mrs K Truscott

Non-Executive Director

## Mr P Marchant

Chief Financial Accountant, Northern Lincolnshire & Goole NHS Foundation Trust



## Principle Charitable Fund Advisor to the Board

During 2023/24, the Group Chief Executive of the Northern Lincolnshire & Goole NHS Foundation Trust, under a scheme of delegated authority approved by the Corporate Trustee, has overall responsibility for the management of the Charitable Funds. Mr J Lofthouse was appointed Group Chief Executive in August 2023. Prior to this Dr Peter Reading was Chief Executive.

The arrangements for approval of charitable fund expenditure under the scheme of delegation of the Corporate Trustee are as follows:

### Delegation Limits

#### £1 - £250

Authorisation from The Health Tree Foundation Charity Manager

#### £251 - £5,000

Further authorisation from Fund Guardian

#### £5,001 - £25,000

Further authorisation from Charitable Funds Clinical Champion

#### £25,001 - £50,000

Further authorisation from Charitable Funds Committee

#### £50,001 and above

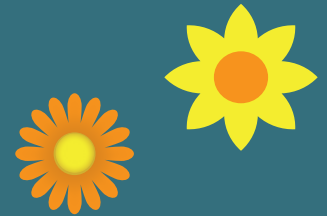
To be noted by NHS Foundation Trust Board

Mr Paul Marchant acts as the Principal Officer overseeing the day-to-day financial management and accounting for the charitable funds during the year.



The Directors do not receive remuneration or expenses from the Charity.

# Structure, Governance and Management



**The Charity was incorporated on March 19th, 1996 by a declaration of trust deed, and all funds held on trust as at the date of registration were either part of the unrestricted funds, registered restricted funds or unregistered restricted funds.**

The Corporate Trustee fulfils its legal duty by ensuring funds are spent in accordance with the objects of each fund. By designating funds, the Trustee respects the wishes of our generous donors to benefit patient care and advance the good health and welfare of patients, carers and staff. Where funds are received with specific restrictions set by the donor, the donation will be ringfenced for a specific area within the wider relevant fund – for example, Cardiology, Cancer Equipment, Ophthalmology, General Surgery, Urology, and for specific wards. The Board of Trustees manage the funds on behalf of the Corporate Trustee. The Board of Trustees consists of Executive and Non-Executive Directors. Non-Executive Directors are appointed by the Council of Governors and Executive Directors are subject to the Trust's recruitment policies.

**Acting for the Corporate Trustee, The Health Tree Foundation Trustees' Committee is responsible for the overall management of the Charitable Funds. The Committee is required to:**

- Provide support, guidance and encouragement for all its income-raising activities whilst managing and monitoring the receipt of all income.
- Control, manage and monitor the use of the fund's resources.
- Ensure best practice is followed in the conduct of all its affairs and fulfil all its legal responsibilities.
- Adhere to the Investment Policy, as approved by the Foundation Trust Board, and ensure performance is continually reviewed whilst being aware of ethical considerations.
- Keep the Trust Board fully informed on the activity, performance and risks of the charity.

The accounting records and the day-to-day administration of the funds are dealt with by the Finance Department's Charitable Funds section at Eastholme Building, Diana, Princess of Wales Hospital, Scartho Road, Grimsby, North East Lincolnshire, DN33 2BA.

The fundraising, grant-making and other administration of funds are dealt with by The Health Tree Foundation, which has staff at Diana, Princess of Wales Hospital, Scartho Road, Grimsby, North East Lincolnshire, DN33 2BA, and Scunthorpe General Hospital, Cliff Gardens, Scunthorpe, North Lincolnshire, DN15 7BH.

## Our Future Plans

The aims and objectives for the next twelve months are to continue to work to deliver on our three-year strategy. The strategy is framed around five key workstreams:

- Income generation to support a three-year Fundraising and Operations Delivery Plan.
- Internal relationships, awareness, and impact maximisation
- External communications, marketing, and community positioning
- Improved working with fund guardians
- Effective systems, processes, and governance

**In addition to the workstreams, three key priority areas have been identified for 2023/24 as follows:**

- Build a network of fundraisers and supporters
- Greater engagement with clinical teams and trust staff.
- Maximizing potential funds
- Our charitable expenditure will continue to be determined by the equipping needs of the hospital and may include the following areas of spend:
  - Purchase of Medical equipment
  - Enhancement of patient facilities
  - Staff training, conferences, and educational resources
  - Support of research projects

Based on the Accounts for the financial year the Trust Board, on behalf of the Corporate Trustee, believes that the Charity can meet all their current and future foreseeable commitments.

## Risk Management

The Corporate Trustee is responsible for managing risk issues for the Charity, which is underpinned by the internal policies and procedures of the NHS Foundation Trust, including:

- Code of Conduct
- Standing Orders
- Fraud Policy
- Standing Financial Instructions and Scheme of Delegation



# Statement of Trustees' Responsibilities



The Trustee is responsible for preparing the Trustees' Annual Report and the financial statements in accordance with applicable law and United Kingdom Accounting Standards (United Kingdom Generally Accepted Accounting Practice).

The law applicable to charities in England and Wales requires the Trustee to prepare financial statements for each financial year, which give a true and fair view of the state of affairs of the Charity and of the incoming resources and application of resources of the Charity for that period.

## In preparing these financial statements, the Trustee is required to:

- Select suitable accounting policies and then apply them consistently.
- Observe the methods and principles in the Charities SORP.
- Make judgments and estimates that are reasonable and prudent.
- State whether applicable accounting standards have been followed, subject to any material departures disclosed and explained in the financial statements.
- Prepare the financial statements on the going concern basis unless it is inappropriate to presume that the Charity will continue in business.

The Trustee is responsible for keeping proper accounting records that disclose with reasonable accuracy at any time the financial position of the Charity and enable them to ensure that the financial statements comply with the Charities Act 2011, the Charity (Accounts and Reports) Regulations 2008 and the provisions of the trust deed.

They are also responsible for safeguarding the assets of the Charity and hence for taking reasonable steps for the prevention and detection of fraud and other irregularities.

The Trustee is responsible for the maintenance and integrity of the Charity and financial information included on the Charity's website. Legislation in the United Kingdom governing the preparation and dissemination of financial statements may differ from legislation in other jurisdictions.

Northern Lincolnshire and Goole NHS Foundation Trust is grateful to the many individuals, groups, associations, clubs and societies who have given generously of their time, money and bequests, to the Trust's Charitable Funds throughout the year. On behalf of the staff and patients who have benefited from improved services and amenities they would like to express their thanks.

Approved on behalf of the Corporate Trustee

Date: 08/08/2024

**Neil Gammon**, Chair of Northern Lincolnshire and Goole NHS Foundation Trust Charitable Funds and Other Related Charities

Date: 08/08/2024

**Jonathan Lofthouse**, Group Chief Executive for Northern Lincolnshire & Goole NHS Foundation Trust and Hull University Teaching Hospital NHS Trust



# Independent Auditor's Report

## Independent auditor's report to the Trustees of Northern Lincolnshire and Goole NHS Foundation Trust Charitable Funds and Other Related Charities.

### Opinion on financial statements

We have audited the financial statements of Northern Lincolnshire and Goole NHS Foundation Trust Charitable Funds and Other Related Charities (the 'charity') for the year ended 31 March 2024 which comprise Statement of Financial Activities, the Balance Sheet, the Statement of Cash Flows, and notes to the financial statements, including a summary of significant accounting policies.

The financial reporting framework that has been applied in their preparation is applicable law and United Kingdom Accounting Standards, including FRS 102 "The Financial Reporting Standard applicable in the UK and Republic of Ireland" (United Kingdom Generally Accepted Accounting Practice).

In our opinion, the financial statements:

- Give a true and fair view of the state of the charity's affairs as at 31 March 2024 and of its income and expenditure for the year then ended;
- Have been properly prepared in accordance with United Kingdom Generally Accepted Accounting Practice; and
- Have been prepared in accordance with the requirements of the Charities Act 2011.

### Basis for opinion on financial statements

We conducted our audit in accordance with International Standards on Auditing (UK) (ISAs (UK)) and applicable law. Our responsibilities under those standards are further described in the "Auditor's responsibilities for the audit of the financial statements" section of our report. We are independent of the charity in accordance with the ethical requirements that are relevant to our audit of the financial statements in the UK, including the FRC's Ethical Standard and we have fulfilled our other ethical responsibilities in accordance with these requirements. We believe that the audit evidence we have obtained is sufficient and appropriate to provide a basis for our opinion.

### Conclusions relating to going concern

In auditing the financial statements, we have concluded that the trustees' use of the going concern basis of accounting in the preparation of the financial statements is appropriate.

Based on the work we have performed, we have not identified any material uncertainties relating to events or conditions that, individually or collectively, may cast significant doubt on the charity's ability to continue as a going concern for a period of at least twelve months from when the financial statements are authorised for issue.

Our responsibilities and the responsibilities of the trustees with respect to going concern are described in the relevant sections of this report.

### Other information

The trustees are responsible for the other information. The other information comprises the information included in the Annual Report, other than the financial statements and our auditor's report thereon. Our opinion on the financial statements does not cover the other information and, except to the extent otherwise explicitly stated in our report, we do not express any form of assurance conclusion thereon.

In connection with our audit of the financial statements, our responsibility is to read the other information and, in doing so, consider whether the other information is materially inconsistent with the financial statements or our knowledge obtained in the audit or otherwise appears to be materially misstated. If we identify such material inconsistencies or apparent material misstatements, we are required to determine whether there is a material misstatement in the financial statements or a material misstatement of the other information. If, based on the work we have performed, we conclude that there is a material misstatement of this other information, we are required to report that fact.

We have nothing to report in this regard.



# Independent Auditor's Report

## Matters on which we are required to report by exception

In light of the knowledge and understanding of the charity and its environment obtained in the course of the audit, we have not identified material misstatements in the Annual Report.

We have nothing to report in respect of the following matters in relation to which the Charities (Accounts and Reports) Regulations 2008 require us to report to you if, in our opinion:

- The information given in the financial statements is inconsistent in any material respect with the Annual Report; or
- Sufficient accounting records have not been kept; or
- The financial statements are not in agreement with the accounting records; or
- We have not received all the information and explanations we require for our audit.

## Responsibilities of Trustees

As explained more fully in the Statement of Trustees' Responsibilities set out on page 34, the Trustees are responsible for the preparation of the financial statements and for being satisfied that they give a true and fair view, and for such internal control as the trustees determine is necessary to enable the preparation of financial statements that are free from material misstatement, whether due to fraud or error.

In preparing the financial statements, the trustees are responsible for assessing the charity's ability to continue as a going concern, disclosing, as applicable, matters related to going concern and using the going concern basis of accounting unless the trustees either intend to liquidate the charity or to cease operations, or have no realistic alternative but to do so.

## Auditor's responsibilities for the audit of the financial statements

Our objectives are to obtain reasonable assurance about whether the financial statements as a whole are free from material misstatement, whether due to fraud or error, and to issue an auditor's report that includes our opinion. Reasonable assurance is a high level of assurance but is not a guarantee that an audit conducted in accordance with ISAs (UK) will always detect a material misstatement when it exists. Misstatements can arise from fraud or error and are considered material if, individually or in the aggregate, they could reasonably be expected to influence the economic decisions of users taken on the basis of the financial statements.

The extent to which our procedures are capable of detecting irregularities, including fraud is detailed below.

Irregularities, including fraud, are instances of noncompliance with laws and regulations. We design procedures in line with our responsibilities, outlined above, to detect material misstatements in respect of irregularities, including fraud. Based on our understanding of the charity and its industry, we considered that non-compliance with the following laws and regulations might have a material effect on the financial statements: employment regulation, health and safety regulation, and anti-money laundering regulation.



# Independent Auditor's Report

To help us identify instances of non-compliance with these laws and regulations, and in identifying and assessing the risks of material misstatement in respect to non-compliance, our procedures included, but were not limited to:

- Inquiring of management and, where appropriate, those charged with governance, as to whether the charity is in compliance with laws and regulations, and discussing their policies and procedures regarding compliance with laws and regulations;
- Inspecting correspondence, if any, with relevant licensing or regulatory authorities;
- Communicating identified laws and regulations to the engagement team and remaining alert to any indications of non-compliance throughout our audit; and
- Considering the risk of acts by the charity which were contrary to applicable laws and regulations, including fraud.

We also considered those laws and regulations that have a direct effect on the preparation of the financial statements, such as the Charities Act 2011.

In addition, we evaluated the trustees' and management's incentives and opportunities for fraudulent manipulation of the financial statements, including the risk of management override of controls, and determined that the principal risks related to posting manual journal entries to manipulate financial performance, management bias through judgements and assumptions in significant accounting estimates, in particular in relation to revenue recognition (which we pinpointed to the cut off assertion, use of restricted funds, and significant one-off or unusual transactions).

## **Our audit procedures in relation to fraud included but were not limited to:**

- Making enquiries of the trustees and management on whether they had knowledge of any actual, suspected or alleged fraud;
- Gaining an understanding of the internal controls established to mitigate risks related to fraud; Discussing amongst the engagement team the risks of fraud; and
- Addressing the risks of fraud through management override of controls by performing journal entry testing.

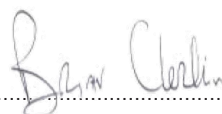
There are inherent limitations in the audit procedures performed and the further removed non-compliance with laws and regulations is from the events and transactions reflected in the financial statements, the less likely we are to become aware of it.

A further description of our responsibilities for the audit of the financial statements is located on the Financial Reporting Council's website at [www.frc.org.uk/auditorsresponsibilities](http://www.frc.org.uk/auditorsresponsibilities). This description forms part of our auditor's report.

## **Use of the audit report**

We have been appointed as auditor under section 144 of the Charities Act 2011 and report in accordance with the Act and regulations made or having effect thereunder. Our responsibility is to audit and express an opinion on the financial statements in accordance with applicable law and International Standards on Auditing (UK). Those standards require us to comply with the Financial Reporting Council's Ethical Standard. Our audit work has been undertaken so that we might state to the charity's trustees those matters we are required to state to them in an auditor's report and for no other purpose. To the fullest extent permitted by law, we do not accept or assume responsibility to anyone other than the charity and the charity's trustees as a body for our audit work, for this report, or for the opinions we have formed.

**Signed:**



Date: 12/08/2024

**Brian Clerkin**

Senior Statutory Auditor  
For and on behalf of  
Sumer Auditco NI Limited  
Registered Auditors  
4th Floor Glendinning House  
6 Murray Street  
Belfast  
BT1 6DN



# Financial Statements

## Northern Lincolnshire & Goole NHS Foundation Trust Charitable Funds and Other Related Charities 2023/24 Financial Statements.

Statement of Financial Activities for year ended 31 March 2024

	NOTES	UNRESTRICTED FUNDS £000	RESTRICTED FUNDS £000	TOTAL 2023/24 £000	TOTAL 2022/23 £000
<b>Income from:</b>					
Donation	3.1	57	0	57	59
Legacies	3.1	248	0	248	141
Grants received	3.1	152	0	152	502
Charitable activities	3.2	167	0	167	152
Investments	3.3	38	0	38	50
<b>Total Income</b>		<b>662</b>	<b>0</b>	<b>662</b>	<b>904</b>
<b>Expenditure on:</b>					
Raising funds	4.1	227	0	227	200
Charitable activities	4.2	451	0	451	1,155
Governance	4.3	87	0	87	58
<b>Total Expenditure</b>		<b>765</b>	<b>0</b>	<b>765</b>	<b>1,413</b>
<b>Net gains / (losses) on investments</b>	6.1	114	0	114	(89)
<b>Net movement in funds</b>		<b>11</b>	<b>0</b>	<b>11</b>	<b>(598)</b>
<b>Reconciliation of funds:</b>					
Total funds brought forward		1,412	0	1,412	
Net movement in funds		11	0	11	
<b>Total funds carried forward</b>	<b>9.1</b>	<b>1,423</b>	<b>0</b>	<b>1,423</b>	

The notes on pages 41 to 51 form part of these financial statements.

All results from continuing operations.

All gains and losses recognised in the year are included in the Statement of Financial Activities.

There is no material difference between the net outgoing resources on ordinary activities and the net outgoing resources for the financial year stated above and their historical cost equivalents.

# Financial Statements

## Northern Lincolnshire & Goole NHS Foundation Trust Charitable Funds and Other Related Charities 2023/24 Financial Statements.

Balance sheet for year ended 31 March 2024

	NOTES	UNRESTRICTED FUNDS £000	RESTRICTED FUNDS £000	31 MARCH 2024 TOTAL FUNDS £000	31 MARCH 2023 TOTAL FUNDS £000
<b>Fixed assets:</b>					
Investments	6.1	1,297	0	1,297	1,383
<b>Total fixed assets</b>	6.2	<b>1,297</b>	<b>0</b>	<b>1,297</b>	<b>1,383</b>
<b>Current assets</b>					
Debtors	7.1	116	0	116	48
Cash at bank and in hand	7.2	50	0	50	170
<b>Total current assets</b>	<b>7</b>	<b>166</b>	<b>0</b>	<b>166</b>	<b>218</b>
Creditors: Amounts falling due within one year	8	40	0	40	189
<b>Current assets</b>		<b>126</b>	<b>0</b>	<b>126</b>	<b>29</b>
<b>Total net assets</b>		<b>1,423</b>	<b>0</b>	<b>1,423</b>	<b>1,412</b>
<b>Net assets</b>		<b>1,423</b>	<b>0</b>	<b>1,423</b>	<b>1,412</b>
<b>The Funds of the Charity:</b>					
Restricted funds	9.2	0	0	0	0
Unrestricted funds	9.3	1,423	0	1,423	1,412
<b>Total charity funds</b>	9.1, 9.4	<b>1,423</b>	<b>0</b>	<b>1,423</b>	<b>1,412</b>

The notes on pages 38 to 51 form part of these financial statements.

The financial statements on pages 38 to 51 were approved by the Board of Trustees and signed on its behalf by.

Signed:.....*M. Gammon*.....

Date: 08/08/2024

**Mr Neil Gammon,**

Chair of Northern Lincolnshire & Goole NHS Foundation

Trust Charitable Funds and Other Related Charities

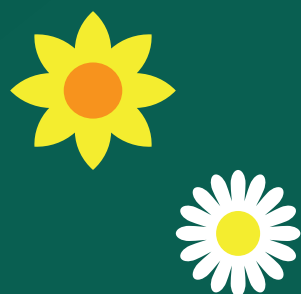
# Financial Statements



## Northern Lincolnshire & Goole NHS Foundation Trust Charitable Funds and Other Related Charities 2023/24 Financial Statements.

Statement of Cash Flows for year ended 31 March 2024

	NOTES	TOTAL 2023/24 £000	TOTAL 2022/23 £000
<b>Cash flows from operating activities</b>			
Operating (deficit) / surplus from continuing operations		(141)	(559)
<b>Operating (deficit) / surplus</b>		<b>(141)</b>	<b>(559)</b>
Non-cash income and expense:			
(Increase) / decrease in Trade and Other Receivables		(68)	(18)
(Decrease) / Increase in Trade and Other Payables		(149)	151
<b>NET CASH (USED) / GENERATED FROM OPERATIONS</b>		<b>(358)</b>	<b>(426)</b>
<b>Cash flows from investing activities</b>			
Sales of financial assets		200	300
Interest received		38	50
<b>Net cash generated from investing activities</b>		<b>238</b>	<b>350</b>
<b>(Decrease) / increase in cash and cash equivalents</b>		<b>(120)</b>	<b>(76)</b>
<b>Cash and Cash equivalents at 1 April 2023</b>		<b>170</b>	<b>246</b>
<b>Cash and Cash equivalents at 31 March 2024</b>		<b>50</b>	<b>170</b>



# Financial Statements



## Northern Lincolnshire & Goole NHS Foundation Trust Charitable Funds and Other Related Charities 2023/24 Financial Statements.

### Notes to Financial Statements

#### General Information

The Northern Lincolnshire & Goole NHS Foundation Trust Charitable Funds and Other Related Charities is charity registered with the Charity Commission for England and Wales. The working name of the Charity is the Health Tree Foundation. The Charity is incorporated in England.

#### Statement of compliance

The individual financial statements of Northern Lincolnshire and Goole NHS Foundation Trust Charitable Funds and other Related Charities have been prepared in compliance with United Kingdom Accounting Standards, including Financial Reporting Standard 102, "The Financial Reporting Standard applicable in the United Kingdom and the Republic of Ireland" ("FRS 102") and part vi of the Charities Act 2011 and the Charities (Accounts and Reports) regulations 2008.

#### 1 Accounting Policies

##### 1.1 Basis of Preparation

The financial statements have been prepared under the historic cost convention and going concern basis, with the exception of investments which are included at market value. The financial statements have been prepared in accordance with Accounting and Reporting by Charities: Statement of Recommended Practice (FRS102) issued in September 2015 and applicable UK Accounting Standards and the Charities Act 2011. The accounting policies have been applied consistently in dealing with items considered material in relation to the financial statements.

The principal accounting policies applied in the preparation of these financial statements are set out below. These policies have been consistently applied to all the years presented, unless otherwise stated. The company has adopted FRS 102 in these financial statements. The date of transition to FRS 102 was 1 April 2014. A reconciliation of the loss for the financial year ended 31 March 2015 and the total equity at 1 April 2014 and 31 March 2015 between UK GAAP as previously reported and FRS 102 is not required, as there are no changes in the reported amounts.

The Charity has taken advantage of the exemption, under FRS 102 paragraphs 11.39 to 11.48A and paragraphs 12.26 to 12.29, the requirement to disclose financial instruments, as the information is already provided in the consolidated financial statements of Northern Lincolnshire and Goole NHS Foundation Trust.

##### 1.2 Funds Structure

Restricted funds are funds which are to be used in accordance with specific restrictions imposed by the donor. Where the restriction requires the gift to be invested to produce income but the trustees have the power to spend the capital, it is classed as expendable endowment.

Unrestricted income funds comprise those funds which the Trustee is free to use for any purpose in furtherance of the charitable objects. Unrestricted funds include designated funds, where the donor has made known their non-binding wishes or where the trustees, at their discretion, have created a fund for a specific purpose.

The charity does not have any expendable endowments.

The major funds held in each of the above categories are disclosed in note 9.

##### 1.3 Incoming Resources

All incoming resources are recognised once the charity has entitlement to the resources. Provided it is probable that the resources will be received and the monetary value of incoming resources can be measured with sufficient reliability.



#### 1.4 Incoming Resources from Legacies

Legacies are accounted for as incoming resources either upon receipt or where the receipt of the legacy is probable; this will be once confirmation has been received from the representatives of the estate(s) that payment of the legacy will be made or property transferred and once all conditions attached to the legacy have been fulfilled.

A receipt is normally probable when:

- there has been grant of probate;
- the executors have established that there are sufficient assets in the estate, after settling any liabilities, to pay the legacy; and
- any conditions attached to the legacy are either within the control of the charity or have been met.

Legacies to which the charity is entitled and for which notification has been received but uncertainty over measurement remains, are disclosed, if material, as contingent income.

#### 1.5 Gifts in Kind

Assets given for distribution by the funds are included in the Statement of Financial Activities only when distributed.

In all cases the amount at which the gifts in kind are brought into account is either a reasonable estimate of their value to the funds or the amount actually realised.

#### 1.6 VAT and Tax

Irrecoverable VAT is charged against the category of resources expended for which it was incurred.

The Charity is a registered charity, and as such is entitled to certain tax exemptions on income and profits from investments, and surpluses on any trading activities carried on in furtherance of the charity's primary objectives, if these profits and surpluses are applied solely for charitable purposes.

#### 1.7 Allocation of Overhead and Support Costs

Overhead and support costs have been apportioned on an appropriate basis between all funds and are included within governance costs on the Statement of Financial Activities. The apportionment is in proportion to the quarterly aggregate balance on each of the funds or the fund incoming resources and is distributed on a quarterly basis.

#### 1.8 Charitable Activities

Costs of charitable activities comprise all costs incurred in the pursuit of the charitable objects of the Charity. These costs comprise direct costs and an apportionment of overhead and support costs.

Liabilities are recognised when an order is placed and is monitored against the fund as a commitment. Once an invoice, goods or services are received then an accrual or a payment is shown in the financial statements.

#### 1.9 Governance Costs

Governance costs comprise all costs incurred in the governance of the Charity. These costs include costs related to statutory audit together with an apportionment of overhead and support costs.

#### 1.10 Fixed Asset Investment

Investments are stated at market value as at the balance sheet date. The statement of financial activities includes the net gains and losses arising on revaluation and disposals throughout the year.

The Common Investment Fund Units are included in the balance sheet at the closing dealing price at 31st March 2024.

### 1.11 Financial Instruments

The Charity has financial assets and financial liabilities of a kind that qualify as basic financial instruments. Basic financial instruments are initially recognised at transaction value and subsequently measured at their settlement value. The investments held by the charity are classified as financial assets measured at fair value through income and expenditure.

### 1.12 Realised Gains & Losses

All gains and losses are taken to the Statement of Financial Activities as they arise. Realised gains and losses on investments are calculated as the difference between sales proceeds and opening market value (purchase date if later). Unrealised gains and losses are calculated as the difference between the market value at the year end and opening market value (or purchase date if later).

### 1.13 Pooled Investments

An official pooling scheme the **“Northern Lincolnshire and Goole NHS Foundation Trust (Expendable Funds) Common Investment Fund”** is operated for investments relating to the following funds:

- Northern Lincolnshire & Goole NHS Foundation Trust Charitable Funds
- Scunthorpe General Hospital Charity
- Goole & District Hospital Charity
- Diana Princess of Wales Hospital Charity

The Scheme was registered with the Charity Commission on 26th August 1997.

## 2 Related Party Transactions

The Northern Lincolnshire and Goole NHS Foundation Trust (NLAG) is a beneficiary of the Charity.

The Charity has provided funding to NLAG of £765k (2022/23; £1,413k) for approved expenditure made on behalf of the charity. This funding is included in the total grant making costs of £765k (2022/23; £1,413k).

The Charity has incurred administration fees of £87k (2022/23; £58k) payable to the NLAG

Amounts due to NLAG at 31st March 2024 £7k (2022/23; £96k).

### 2.1 Ultimate Parent

NLAG is the immediate and ultimate parent undertaking and controlling party. Its principal activity is the provision of Healthcare and it prepares fully consolidated statements which are available at the following website: [www.nhs.nlg](http://www.nhs.nlg)

NLAG is the Corporate Trustee of the Charity.

### 2.2 Role of volunteers

The Charity enlists the support of volunteers to achieve its objectives. The volunteers primarily assist in fundraising activities.





### 3 Analysis of Income Excluding Investment Income

#### 3.1 Incoming resources from General Funds

	UNRESTRICTED FUNDS £000	RESTRICTED FUNDS £000	2023/24 TOTAL FUNDS £000	2022/23 TOTAL FUNDS £000
Donations from individuals & organisations	57	0	57	59
Legacies	248	0	248	141
* Grants Received From NHS Charities Together	152	0	152	502
<b>Total</b>	<b>457</b>	<b>-</b>	<b>457</b>	<b>702</b>

\* Community Grants: £150,000 (2022/23: £472,000) and Development Grants Received: £Nil (2022/23: £30,000) from NHS Charities Together.

#### 3.2 Incoming resources from Charitable Activities

	UNRESTRICTED FUNDS £000	RESTRICTED FUNDS £000	2023/24 TOTAL FUNDS £000	2022/23 TOTAL FUNDS £000
Fundraising	167	0	167	152
<b>Total</b>	<b>167</b>	<b>0</b>	<b>167</b>	<b>152</b>

#### 3.3 Investment Income

	UNRESTRICTED FUNDS £000	RESTRICTED FUNDS £000	2023/24 TOTAL FUNDS £000	2022/23 TOTAL FUNDS £000
Investments in a Common Investment Fund	38	0	38	50
<b>Total</b>	<b>38</b>	<b>0</b>	<b>38</b>	<b>50</b>

All investments were held within the UK

<b>Total Income</b>	<b>662</b>	<b>-</b>	<b>662</b>	<b>904</b>
---------------------	------------	----------	------------	------------





## 4. Expenditure

### 4.1 Expenditure on Raising Funds

	UNRESTRICTED FUNDS £000	RESTRICTED FUNDS £000	2023/24 TOTAL FUNDS £000	2022/23 TOTAL FUNDS £000
Charges for seconded staff	180	0	180	159
Other fund raising expenses	47	0	47	41
<b>Total: Fund Raising Expenditure</b>	<b>227</b>	<b>0</b>	<b>227</b>	<b>200</b>

### 4.2 Total Charitable Activities

	UNRESTRICTED FUNDS £000	RESTRICTED FUNDS £000	2023/24 TOTAL FUNDS £000	2022/23 TOTAL FUNDS £000
Patients Welfare and Amenities	346	0	346	768
Medical Equipment	23	0	23	40
Other Equipment including IT	6	0	6	21
Staff Other Equipment	0	0	0	0
Equipment Supplied by partner charities	0	0	0	0
Printing, Stationery, Books and Journals	2	0	2	1
Staff Welfare & Amenities	9	0	9	71
Staff Furniture & Fittings	3	0	3	1
*Training & Education including Educational Aids	6	0	6	7
*Travel and Subsistence	0	0	0	1
Capital Equipment Purchased	56	0	56	245
<b>Total: Charitable Expenditure</b>	<b>451</b>	<b>0</b>	<b>451</b>	<b>1,155</b>

\* Grants to individuals to attend training courses amounted to £Nil (2022/23: £Nil).



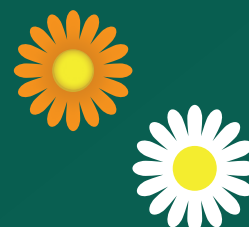
### 4.3 Governance Costs

	UNRESTRICTED FUNDS £000	RESTRICTED FUNDS £000	2023/24 TOTAL FUNDS £000	2022/23 TOTAL FUNDS £000
External Audit - audit fees	25	0	25	6
Financial Services Charges and Overheads	62	0	62	52
<b>Total</b>	<b>87</b>	<b>0</b>	<b>87</b>	<b>58</b>

Financial Services Charges and Overheads includes salary costs of £40k (2022/23: £40k) related to staff resources and £5k (2022/23 £5k) related to system charges bought in from the Northern Lincolnshire and Goole NHS Foundation Trust. The external audit fee accounted for within the financial statements includes £9k relating to the prior year. The final agreed external audit fee for 2023/24: is £13,300 (excluding VAT).

### 4.4 Total resources expended

	2023/24 £000	2022/23 £000
Grants to Northern Lincolnshire and Goole NHS Foundation Trust	765	1,413
<b>Total</b>	<b>765</b>	<b>1,413</b>



### 4.4 Employee Costs & Numbers

The Charity does not have any employees (2022/23: nil).

Charges in relation to NHS Foundation Trust staff regarding their time spent on Charitable Funds finance and administration are included within governance costs, see note 4.2.

During the year the fund raising team were seconded to Charitable Funds from the Smile Foundation.

The costs of this secondment are included within the costs of generating voluntary income. These costs are apportioned to individual funds in proportion to the income raised.

The trustee does not receive remuneration or expenses from the Charity, (2022/23: nil).

### 5 Transfers

During the year there were no transfers from unrestricted funds into restricted funds (2022/23: none).



## 6 Investments

### 6.1 Movement in Fixed Asset Investment

	UNRESTRICTED FUNDS £000	RESTRICTED FUNDS £000	2023/24 TOTAL FUNDS £000	2022/23 TOTAL FUNDS £000
Market Value at 1 April	1,383	0	<b>1,383</b>	1,772
Add: Purchases at carrying value	0	0	<b>0</b>	0
Less: Disposals at carrying value	(200)	0	<b>(200)</b>	(300)
Add: Net gain / (loss)	114	0	<b>114</b>	(89)
Reclassification	0	0	<b>0</b>	0
<b>Total: Market Value at 31 March</b>	<b>1,297</b>	<b>0</b>	<b>1,297</b>	<b>1,383</b>

### 6.2 Fixed Asset Investments:

#### Investment

	Held in UK £000	2023/24 TOTAL FUNDS £000	2022/23 TOTAL FUNDS £000
Investment Fund and Fixed Interest Fund	1,297	<b>1,297</b>	1,383
<b>Total: Market Value</b>	<b>1,297</b>	<b>1,297</b>	1,383
Investments in a Common Investment Fund		1,297	1,383
<b>Total: Market Value</b>		<b>1,297</b>	<b>1,383</b>

All investments were held within the UK

## 7 Analysis of Current Assets

### 7.1 Debtors Under 1 Year

	UNRESTRICTED FUNDS £000	RESTRICTED FUNDS £000	31 March 2024 TOTAL FUNDS £000	31 March 2023 TOTAL FUNDS £000
Trade Debtors	9	0	<b>9</b>	10
Prepayments	4	0	<b>4</b>	3
Other Debtors	103	0	<b>103</b>	35
<b>Total: Debtors &lt; 1 Year</b>	<b>116</b>	<b>0</b>	<b>116</b>	<b>48</b>



## 7.2 Cash at bank and in hand

	UNRESTRICTED FUNDS £000	RESTRICTED FUNDS £000	31 March 2024 TOTAL FUNDS £000	31 March 2023 TOTAL FUNDS £000
Cash at bank and in hand	50	0	50	170
<b>Total: Cash at bank and in hand</b>	<b>50</b>	<b>0</b>	<b>50</b>	<b>170</b>

All short term investments and deposits are held in the UK with commercial banks and the Charities Official Investment Funds (COIF)

<b>Total of Current Assets</b>	<b>166</b>	<b>0</b>	<b>166</b>	<b>218</b>
--------------------------------	------------	----------	------------	------------

## 8 Creditors: Amounts falling due within one year

	UNRESTRICTED FUNDS £000	RESTRICTED FUNDS £000	31 March 2024 TOTAL FUNDS £000	31 March 2023 TOTAL FUNDS £000
Trade Creditors	16	0	16	68
Amounts owed to group undertakings	7	0	7	96
Accruals and deferred income	17	0	17	25
<b>Total: Creditors: amounts falling due within one year</b>	<b>40</b>	<b>0</b>	<b>40</b>	<b>189</b>

Amounts owed to group undertakings represents sums owed at the year end by the Charity to Northern Lincolnshire and Goole NHS Foundation Trust, who is a related party, for costs incurred by the NHS Foundation Trust on behalf of the charity, in the furtherance of the charity's objects.

## Purchase Commitments

Orders raised at the Balance Sheet Date, for which goods have not been received amounted to £146k (2022/23: £43k).



## 9 Analysis of Charitable Funds

### 9.1 Charitable Fund Balances

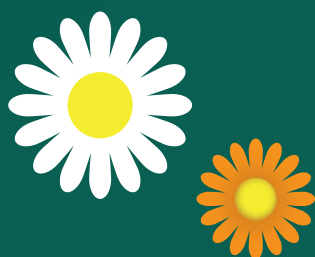
	UNRESTRICTED FUNDS £000	RESTRICTED FUNDS £000	31 March 2024 TOTAL FUNDS £000	31 March 2023 TOTAL FUNDS £000
<b>Total Charity Funds</b>	<b>1,423</b>	<b>0</b>	<b>1,423</b>	1,412

### 9.2 Unrestricted Income Funds


	Fund Balance as at 01.04.23 £000	Incoming Resources £000	Expended Resources £000	Funds Transferred £000	Gains and Losses Inv. £000	Fund Balance as at 31.3.24 £000
Unrestricted Funds	206	201	(250)	0	14	171
Unrestricted Designated Funds (See Note 9.6)	1,206	461	(515)	0	100	1,252
<b>Total General &amp; Designated Funds</b>	<b>1,412</b>	<b>662</b>	<b>(765)</b>	<b>0</b>	<b>114</b>	<b>1,423</b>

### 9.3 Total charity funds

	Fund Balance as at 01.04.23 £000	Incoming Resources £000	Expended Resources £000	Funds Transferred £000	Gains and Losses Inv. £000	Fund Balance as at 31.3.24 £000
<b>Total General &amp; Designated Funds</b>	<b>1,412</b>	<b>662</b>	<b>(765)</b>	<b>0</b>	<b>114</b>	<b>1,423</b>



## 9.4 Analysis of designated fund movements



	Fund Balance as at 01.04.23 £000	Incoming Resources £000	Expended Resources £000	Funds Transferred £000	Gains and Losses Inv. £000	Fund Balance as at 31.3.24 £000
Big Thank You Appeal - Diana Princess of Wales Hospital	7	14	(21)	0	0	0
Big Thank You Appeal - Goole District Hospital	18	140	(58)	0	9	109
Big Thank You Appeal - Scunthorpe General Hospital	227	10	(76)	0	14	175
A&E	1	18	(15)	0	0	4
Big Red Heart	78	18	(18)	0	7	85
Cancer Care - General	423	24	(107)	0	31	371
Cancer Care - Pink Rose	31	32	(31)	0	3	35
Critical Care	12	9	(8)	0	1	14
Diabetes	46	3	(13)	0	3	39
End of Life Care	7	5	(3)	0	0	9
Goldern Leaves	42	3	(8)	0	4	41
In Your Community	33	24	(21)	0	3	39
Little Lives	0	102	(61)	0	3	44
Little Lives Bereavement	11	0	(3)	0	1	9
Medical	1	12	(4)	0	0	9
Research & Diagnostics	32	2	(3)	0	2	33
Rheumatology	48	1	(5)	0	4	48
Stroke	20	5	(5)	0	2	22
Surgery	169	39	(55)	0	13	166
<b>Total General &amp; Designated Funds</b>	<b>1,206</b>	<b>461</b>	<b>(515)</b>	<b>0</b>	<b>100</b>	<b>1,252</b>

The Trustees set an opening or closing balance of £100,000 or above as the threshold for the separate reporting of material designated funds.

In the interests of accountability and transparency a complete breakdown of all such funds is available of request.

The objects of all these funds is for the welfare and benefit of staff and patients in the relevant wards and clinical areas.

## 10 Reconciliation of net income/(expenditure) to net cash flow from operating activities



	TOTAL 2023/24 £000	TOTAL 2022/23 £000
Net income/(expenditure) for the reporting period (as per the statement of financial activities)	11	(598)
(Gains)/Losses on investments	(114)	89
Dividends and interest from investments	(38)	(50)
(Increase)/decrease in debtors	(68)	(18)
Increase/(decrease) in creditors	(149)	151
<b>Net cash used in operating activities</b>	<b>(358)</b>	<b>(426)</b>

# A big THANK YOU!

“

The Health Tree Team have provided just what our department needed to give patients the privacy they require while in our waiting area and the outside of the hospital now looks much better.

Many thanks to Lauren Henry and all involved in making such a big positive change for our department.

The wish was to improve the comfort of the patients while sitting for long periods in the counselling room after receiving a cancer diagnosis.

Many senior patients require furniture that is easy to sit in and rise from, the furniture needs to be the right seat height, the contemporary furniture offers this and therefore comfort.

The material and colour bring a softness, enhancing the aesthetics of the counselling room.

”

# Contact

**Email:** [hello@healthtreefoundation.org.uk](mailto:hello@healthtreefoundation.org.uk)

**Telephone:** 03033 304514

**Website:** [www.healthtreefoundation.org.uk](http://www.healthtreefoundation.org.uk)



## Goole:

The Health Tree Foundation  
Goole & District Hospital,  
Woodland Avenue, Goole,  
DN14 6RX

## Scunthorpe:

The Health Tree Foundation  
Scunthorpe General Hospital,  
Cliff Gardens, Scunthorpe,  
DN15 7BH



## Grimsby:

The Health Tree Foundation  
Diana, Princess of Wales  
Hospital, Scartho Road,  
Grimsby, DN33 2BA



The Health Tree Foundation  
is the working name of the Northern  
Lincolnshire and Goole NHS Foundation Charitable  
Funds. The principal address is: Diana, Princess of  
Wales Hospital, Scartho Road, Grimsby, North East  
Lincolnshire, DN33 2BA

*Registered charity number: 1054935*