

Annual Report 2020-21

New Ark Play Association

Registered charity number: 1026751

New Ark Play



Adventure Playground,
City Farm & Eco Centre

**A safe, caring, adventurous environment
for everyone developing skills for life**



Parent and Toddler Group • Eco Garden

Preschool Playgroup from age 2 years 9 months

Holiday and After School Club • Play Support Service

City Farm offering Birthday Parties, Group Visits,

Volunteering Opportunities, Adult Social Mornings

Animal Care Courses & Animal Care Student Placements



Managers, Staff & Committee

Management Committee

Jo Curphey (Chair)
Rob Brown (Treasurer)
Lisa Sachse
Claudia Butler
Ruth Scotten
Steve Milford

Playground

Sam Brown (Manager)
Laura Bellamy
Denise Jinks
Abigail Curphey (Relief)
Lauren Mitchell (Relief)

Administration

Sally-Anne Miller-Molson

Cleaning

Laura Bellamy
Sophie Portlock

Playgroup

Denise Jinks
Jen Faunt
Nikki Miller
Jayne Davey
Chloe Charnley
Emma Greenwood
Lauren Shiels
Nicole Davis

Play Support Service

Sam Brown (Manager)
Laura Bellamy
Jen Faunt

Farm

Carolyn Bellamy (Manager)
James Wallace



Welcome to New Ark Play!

We are an independent charity, registered with Ofsted, officially called **New Ark Play Association**. We provide stimulating play opportunities for children of all ages and our facilities include a traditional Adventure Playground, Eco Centre and City Farm.



We have a **talented and dedicated team** who take pride in delivering the highest standards of care to our children. Our Management Committee which oversees the running of New Ark is made up of a group of **committed local volunteers**, who each bring unique skills and experience to benefit New Ark. We also appreciate the dedication of the volunteers who support our fundraising activities, and help with a variety of essential tasks around the site - especially on our farm. **We are extremely thankful for everyone who contributes their time and expertise to helping to make New Ark a special place.**



We continue to strive to keep charges as low as possible to try to ensure that lack of money does not prevent anyone from enjoying our facilities, and **we are continually seeking ways to add value to our local community.**

COVID-19 has had a significant impact on our ability to deliver our usual services and fund raising activities, and as a result we have lost a lot of income in the past year (In addition to the loss of the last of our Local Authority funding). **We are so proud of the way that our team and our children have coped with the challenges**, and hugely appreciative of everyone who has supported us; including our **dedicated farm volunteers** who gave so much of their time and money to care for our animals. A **special note of thanks** goes out to one of our parents, **Jason Lovett**, who embarked on a gruelling personal challenge in order to raise much needed funds for our sensory space, to **Peterborough Lions Leisure CIC**, who heard about Jason's challenge and generously donated an amazing array of sensory equipment. I'd also like to express our **sincere gratitude** to the **Directors at Princebuild** who replaced New Ark's dilapidated heating system free of charge, to ensure we could keep the children warm last winter.

You are all heroes!

I hope you enjoy reading our Annual report.

Jo Curphey, Committee Chair



New Ark Opening Times

Toddler Group : Wednesday 13:00 - 15:00 (Term Time)

Our parent and toddler group are weekly sessions for children aged 0-4 years, giving them the time to explore our Eco Centre and City Farm with their family.

Preschool Playgroup : Monday to Friday 09:00 - 12:00 12:30 - 15:00 (Term Time)

Our children attending New Ark Playgroup learn through play using the Adventure Playground, City Farm and Eco Centre. Pre-school children use the Eco Centre as part of their full days in preparation for going to school. In the summer term we offer Eco sessions for children due to start pre-school in the September.

Play Support Service : 09:00 - 15:00 (Term Time)

In our Play Support Service we offer specialist support for individuals and small groups with social, emotional and behavioural difficulties. With our support, children can be helped with the transition back into a school setting.

Adventure Playground : 15:45 - 17:45 (Term Time) 08:30 - 17:30 (School Holidays)

During term time our After School Club is all about adventure play with activities such as digging, building, ball games, swinging and climbing; and other activities based around a range of creative arts and crafts. The children also have the opportunity to visit the farm. During the school holidays the children also get the opportunity to do baking in our kitchen, outdoor cooking, den building, water slides, messy play and more. During summer holidays we run Eco sessions and Forest School for under 8s.

(As a guide New Ark follows Newark Hill Academy's closure timetable)

City Farm : 10:00 - 12:00 15:45 - 17:30 (Open All Year)

During session time the children attending our Playgroup, Play Support Service, After School Club and Holiday Club get the opportunity to visit our City Farm and help to care for our animals. That includes grooming, feeding and cleaning out our small animal hutches. We also welcome group visits and visitors during term times and school holidays.

Price List



Toddler Group	Adult & Child		£3.00	Includes drink	Term time only Wednesday 1-3pm
	Additional Adult		£1.00		
	Additional Child		£1.00		
Playgroup	Hourly Fee (If not funded)	Per child	£4.00	Term time only Monday-Friday 9am-12pm 12:30-3pm	
Holiday Club	Per Day	Per child	£22.00	School holidays Monday-Friday 8.30am-5.30pm	
	Per Hour	Per child	£4.00		
After School Club	Daily Charge	Per Child	£5.00	Per Night	Term time only Monday-Friday 3.45-5.45pm Includes toast & drink
	Walkover Fee	Per Child	£1.00	After School	
Farm	School & Group Visits	Per Child	£5.00	Monday-Friday Adult supervision needed	
	Adult social mornings	Per Adult	£5.00 (Carers are free)	Mondays & Wednesdays 10am-12pm Includes hot or cold drink	
	Birthday Parties	Up to 10 Children	£100.00 £7 per additional child	Saturday & Sunday Times vary Maximum 20 children £25 deposit to book Adult supervision required	



Preschool Report

From the end of March 2020 when we received news that the country was going into its first lockdown, we didn't have any children attending even though the government allowed certain working parents and children to access childcare. By June and July, we saw a few children return during the mornings, and we focused on Eco sessions basing the curriculum on the outdoors. It was not until September when we saw an increase in children returning to our setting.



From the start of COVID-19, it was priority that safety measures were put in place to minimise the risk of transmission to try and keep everyone safe. Every day we received new government guidance as changes evolved, and still we continue to receive regular updates.



Back in February 2020, Elisabeth and Donne Buck decided to leave New Ark. They were the founders of New Ark Play Association and were popular figures, spending a lot of time engaging in different projects with children of all ages, families and also working with volunteers. Elisabeth worked the majority of her time in preschool and we had planned during last summer to have a

joint celebration, wishing preschool 'Happy Birthday' and to invite Elisabeth and Donne back to say 'thank you' to them both for their commitment, hard work and their long term contribution to New Ark. Unfortunately, due to the pandemic this did not go ahead, and this included our annual Teddies Bear Picnic back in July 2020 which saddened some of our parents.

In October we said goodbye to Linda who worked in preschool for many years, and over the last few months we have also said goodbye to Sarah and Jayne. All have worked with many families and their children making a positive impact on many children and their development.





BUT Now that some of the restrictions have eased it has taught us a different way of working and there are some permanent changes that we will keep in place going forward that we feel work well for our children and staff. Over the months our children have all adapted well with the COVID-19 measures, following hygiene routines that we have put in place, washing hands on arrival and when they leave.

We have kept children engaged in all areas of their learning by supporting them in many different activities throughout the year which has shown positive outcomes such as building confidence, self esteem and positive social skills.

Some of these activities included:

- Regularly visiting our unique farm, where children get to pet the smaller animals and feed all the animals on the farm.
- Pumpkin carving at Halloween.
- Learning about Remembrance Day and making their own poppies.
- Celebrating different events which included Diwali, when they made decorative tea light holders out of clay.
- Making chocolate nests at Easter, when children had their own Easter Egg Hunt, raising funds for preschool.



We had lots of fun playing outdoors come rain, shine or snow with our mud kitchen, scooters, trikes, mini trim trail or just running around using the large amount of space that we have.

And then there was our Eco garden..... Throughout the year some of the activities the children have enjoyed are pond dipping, chalk painting on the paths and making their own pencils.

I would like to say thank you to all our parents, carers and children who have followed our guidelines and worked closely with us to keep safe.

Thank you to all the staff for their hard work and dedication throughout the year especially with the added COVID-19 responsibilities. It is our staff who help to make our setting an amazing place.

Samantha Brown, New Ark Manager

What Ofsted say about New Ark

New Ark was inspected by Ofsted on 12 May 2021. The inspector was very impressed by the quality of the provision for our children and rated us as **'Good'** in all areas.

The Inspector praised New Ark's **unique provision** and applauded the fact that our team work hard to ensure **our children's feelings, voices and choices are respected** and they are **encouraged to think critically** and use their imagination as they **enjoy playing and exploring** our wide range of activities.



'Children are confident, articulate and friendly. They enjoy participating in a wide range of activities available to them at this unique provision. For example, they learn about animal care at the on-site farm, on play equipment in the extensive outdoor area. Parents also appreciate how much these activities benefit all aspects of their children's development.'

'Children demonstrate a positive attitude to learning, which will support them well when they move on to school. They are eager to interact with each other and adults. Consequently, they develop their communication and language skills well.'

'Staff have a clear knowledge about what each child can do and what they need to learn next. The curriculum is planned so that each child enjoys rich learning opportunities and makes good progress in their learning and development. This is testified by parents.'



*Children show good physical skills as they navigate the obstacle course outside. They are able to balance on wooden blocks, climb, slide, and jump a given number of times on the small trampoline. Staff effectively support those children who require extra support. They work well with parents and other professionals to ensure that **children fulfil their potential.**'*

Play Support Service Report

This has been a year like no other, like many services the Play Support was forced to close its doors during the pandemic in March 2020. It did not re open until September 2020 when three schools chose to refer children to our service. As part of the safety measures, the students were kept in their own school bubbles visiting on a reduced timetable with the curriculum being based outdoors. During January 2021 we entered a second lockdown which again impacted our service even further. We became fully operational in May 2021.



The Play Support Service is a unique provision for children experiencing social, emotional and behavioural difficulties. We offer short term placements to support children to help them manage their feelings in positive ways. This is achieved by using our City Farm, Eco Centre and Adventure Playground. We engage small groups of children in hands on activities with the aim of developing positive social skills. Our planned outcomes are to see happy children returning to full time education.

On the Farm we offer children the opportunity to help care for the animals. We carry out daily tasks which include feeding and cleaning out the small animals. The farm and the animals provide a therapeutic environment which enables the children to succeed in many positive achievements. Children thrive with the responsibilities that they are given and we see their confidence grow.

I would like to thank the staff for their long term support and commitment.

New referrals are now being taken. These can be made direct to us by schools or external agencies. For further information please contact Sam Brown on 01733



Playground Report

Although both our afterschool and holiday club stopped from the end of March 2020, I am very happy to tell you all that we have just completed our summer holiday club. It was lovely to have the children back and see both new and returning children.



Our playground is a traditional adventure playground, and many structures are handmade. Children explore risk in a supervised environment.

Children choose their own play opportunities; they are given responsibilities when they visit the farm by engaging in many tasks and caring for a variety of animals. Some of the other activities children can participate in are clay work, painting, bracelet making, football, water play and various outdoor games.

Throughout the magazine you will read how the pandemic has affected our different services, it has been very hard but as we try to rebuild the different services and we look forward to resuming the walkover this month.

During summer 2020 we offered weekly afternoon sessions for up to four weeks for small groups of children to visit and participate in farm activities. This was very popular as the majority of children that accessed this provision had not been in school during lockdown.

With the restrictions that have been in place it has been very difficult to safely open all provisions at the same time. We are looking forward to the future greeting all children to the afterschool sessions this month, future holiday clubs and opening our doors to our fundraising events.

If you would like any information about our afterschool or holiday club, please contact us on 01733 340605.

**Samantha Brown,
New Ark Manager**



Children's parties with a sense of adventure at New Ark!



You can;

- Decorate our function room using your own theme
- With full use of our kitchen you can bring party food and cake
- Play party games

Your guests can;

- Explore our traditional Adventure Playground
- Feed and groom the animals on our City Farm
- Take part in a treasure hunt in our Eco Centre

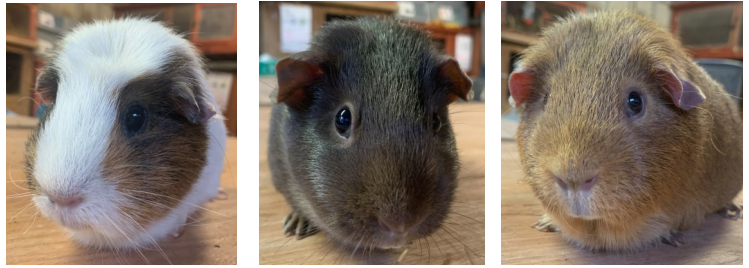
£100 for up to 10 children

Additional children £7 each (maximum 20 children) & parents free.

No hidden charges.

To discuss your requirements email newarkplay.office@gmail.com or telephone New Ark to speak to Carolyn or Sam between 10am-12pm weekdays on 01733 340605.

Farm Report



Like all of our services, COVID-19 hit us hard on the farm. Many of our volunteers had to stop attending, due to health and safety concerns, and we couldn't accommodate Animal Care students or group visits due to Government restrictions; meaning that our regular daily helpers and sources of income stopped immediately.



A small team of amazing volunteers rallied around, working in separate bubbles on a rota basis so that we could prioritise the animals' welfare and ensure they were all fed, watered, and cleaned daily. As well as giving us their valuable time, these awesome volunteers also donated money through animal sponsorship, to help us pay for food, bedding and vet's bills.

The farm struggles with funding and relies heavily on donations. We greatly appreciate all the help we receive from our loyal volunteers and without them the farm would not be what it is today. For many years, the farm has been a key element of the community, giving opportunities to students and volunteers to take part in

purposeful rewarding work, as well as providing opportunities for social interaction for vulnerable adults.

Thankfully, **we are starting to offer students the opportunity** to undertake placements for animal care courses again, referred through schools and colleges. We are also welcoming visits again from schools (including special schools), and other groups such as nurseries and preschools.

We are also **able to offer placements for young people to undertake voluntary work** related to enrichment activities such as the National Citizen Service, Prince's Trust and Duke of Edinburgh Awards.

Contact Carolyn on **01733 340605 to discuss your needs.**



We were lucky to have three Muscovy ducks donated in December 2020. They are called Rudolf, Dasher and Dancer and they are very unusual and handsome!



We were also given two magnificent Norfolk Black turkeys, called Rosie and Jim, whose head and necks change colour depending on their mood!

On a sad note we very suddenly lost two key volunteers who are greatly missed at the farm. George Hallet and Mark Harding both gave many years of help and support to the farm over the last 20 years, and made a huge difference to the farm by regularly giving their time, contributing regular donations of money, and assisted with fundraising during our open day events. We appreciated their support and we will not forget them.

Carolyn Bellamy, Farm Manager

Volunteer Story — Hannah Murthwaite

I have been working at the farm for 7 years. I first came to the farm while I was at secondary school to learn about farm animals and how to look after them. While I was at college Nicola arranged a placement for me at the farm and I have been there ever since. It has been hard through lockdown I missed everybody and the animals. I have met so many people and made some friends. I love everything about working there.

Just a special mention about a special friend Mark Harding who recently passed away. He was a friend to everyone who knew him, he made you happy if you were upset and he was funny in his own way. He had a great sense of humour. He will be sorely missed by everybody. We miss Mark. Rest in peace.

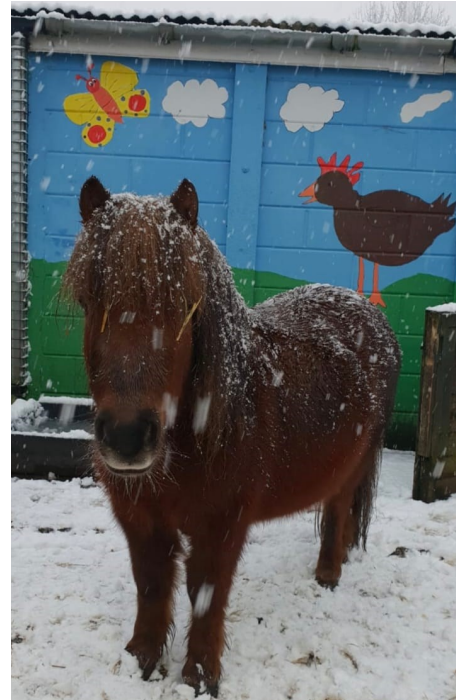


Volunteer Story — Gina Cook

I enjoy my visits to New Ark farm, which brings structure to my week and gives me something to look forward to.

Working as a volunteer means that I get to work with other volunteers and staff, and together we form a little community where we work together to get the tasks done, e.g. cleaning water tubes and topping up food bowls.

My time at the farm has been like a journey. When I first came to the farm I could only stay for about half an hour. Now, as time as gone by I can stay for longer and longer periods of time. As a result of staying longer, I have more time do other tasks.



Coming to the farm has given me confidence. As the weeks go by, so has my confidence, both with the animals and other volunteers and staff.

Being involved at New Ark farm I have learnt how to look after the animals. During my time at New Ark farm I have attended a number of animal

welfare courses. On one course in particular we learnt about good and bad foods for each animal.

The farm has various types of animals and they all have different personalities and have different food tastes, for example, most of them love a grape!

During the day we stop for a break. We sit in a hut and have a coffee and a slice of cake, and talk about the farm and the animals.



If you're going on holiday, why not treat your pet to a holiday too?



For a small daily fee of £1.50 per night, New Ark can board your animals with us while you are away on holiday. We can care for guinea pigs, rabbits and chickens.



Another recent addition to our New Ark family is a Mallard duck called Quackity, who was found in a drain at Orton Mere when he was a duckling and he was hand-reared by us and the children at New Ark.



**In loving memory of
Mark Harding
New Ark Farm Volunteer
& Supporter 2001-2021**

Mark was a very special person who loved the farm, and everyone loved him. He was kind and thoughtful and had an infectious sense of humour. To spend time with Mark was to be happy, uplifted and to laugh—and he made us laugh a lot!! He saw the good in everyone, was generous of heart, and a much loved friend. Through all of our sadness, we still cannot think of him without smiling.

We will treasure our memories of him,
but miss him so very, very much.

Bless you Mark, Rest in Peace

XXXX

Treasurer's Report



Hello everyone, my name is Rob and I am the Treasurer for New Ark and it's that time of year again!

To say this year has been tough financially on us is an understatement. This was our first year without any council funding (which used to amount to £33,000 per year), so not only did we have to try and overcome this shortfall but we then ran into COVID-19, which has meant we have had minimal numbers of children in preschool across the year, we were unable to run our after-school club and holiday clubs, and didn't have any school and group visits to the farm; making it extremely tight on our cash flow.

We have had to juggle all of our staff between working and going on furlough, but I have to thank everyone involved for all their hard work and all those that have helped to sort this out.

Unfortunately again due to COVID we had to cancel all of our planned fundraising events, including our Easter Egg Hunt, Summer Fete, a BBQ and Music Evening, Annual Open day and Christmas Fete. By not holding these we have lost about £8,000-£10,000.

We have however been hugely helped out on site with maintenance jobs by Community Payback, and we are very grateful to them for their continued support. We also have had huge help from Princebuild with donations of building materials and a new heating system, and generous donations and support from ad hoc fundraising activities from parents and volunteers.

Also on a positive note, we have received our accounts back from our accountant and **we did make a small PROFIT!** This is a real bonus and everyone involved deserves a huge pat on the back. We now need to build on this and see where we can go, It won't be easy but let's see what 2021/22 brings!

We have identified that **we need help with sourcing funding pots and help with completion of application forms.** If you know of any pots of money or can volunteer any spare time to help with completing the paperwork, or have any fundraising ideas please get in touch.

Rob Brown, Treasurer



Thank You!

Andrew Moore
Anne & John Green
Carol, Tina & Tracey Hallett
Carolyn Bellamy
Chloe Charnley
Chris Welch
Claire Duffy
Claudia Butler
Community Payback
Denise Jinks
Des Hopwood
Emily Browett
Emma Greenwood
Erin Lovett
Food Cycle
Gina Cook
Hannah Murthwaite
Hazel & John Greenwood
James Wallace
Jan Ruffle
Jane Carpenter
Jason Lovett
Jayne Davey
Jen Faunt
Jim Everitt
Jo & Abigail Curphey
John & Chloe Davey



Karrone Green
Kelly Martin
Ken Maggs (Moore Thompson
Chartered Accountants)
Laura Bellamy
Lauren Mitchell
Lauren Shiels
Linda Wilson
Lisa Sachse
Marks & Spencer
Michelle Stapleton
Natalie Guarnori
Nathan Miller
Nicola Reynolds
Nicole Davis
Nikki Miller
Odiz Store
Pengelly & Mizen Vets
Peterborough Lions Leisure CIC
Princebuild
Rob Brown
Ruth Scotten
Sally-Anne & Wayne Miller-Molson
Sam Brown
Sarah Ebbs
Sophie Portlock
Steve & Hazel Milford
Steve Temple



Join in with the fun at New Ark!

Parent and toddler group

Preschool playgroup with Eco sessions (Forest School)

School holiday & after school play sessions

All day childcare in holidays

Play Support Service

Student placements in childcare and animal care

Volunteer opportunities for individuals and groups

Children's parties

Group and family visits

Adult social mornings

Contact us to find out more

Newark Play Association Ltd, Hill Close (off Reeves Way),
Peterborough PE1 5LZ

Visit our website: www.newarkplay.co.uk



Follow us on Facebook: New Ark Adventure Playground

Email: newarkplay.office@gmail.com

Call: 01733 340605



Registered charity no 1026751



COMPANY REGISTERED NO: 01712322

NEWARK PLAY ASSOCIATION LIMITED
CHARITY COMMISSION REGISTERED NO: 1026751

STATEMENT OF ACCOUNTS

for the year ended

31 March 2022

NEWARK PLAY ASSOCIATION LIMITED

Contents Page

for the year ended 31 March 2022

INDEX

Legal and Administrative Information	1
Trustees' Annual Report	2 to 4
Independent Examiner's Report	5
Statement of Financial Activities	6
Balance Sheet	7
Notes to the Financial Statements	8 to 14

NEWARK PLAY ASSOCIATION LIMITED

Legal and Administrative Information

for the year ended 31 March 2022

Registered office

Hill Close
Off Reeves Way
Peterborough
PE1 5LZ

Directors and Trustees

Mrs. J. Curphey	Chair of trustees
Mr. R. Brown	Treasurer
Mrs. C. Butler	
Mr. S. Milford	
Miss. L. Sachse	
Mrs. R. L. Scotten	

Independent Examiner

K J Maggs F.C.A.
Moore Thompson
Bank House
Broad Street
Spalding
Lincs
PE11 1TB

Bankers

Barclays Bank Plc
1 Church Street
Peterborough
PE1 1XE

Solicitors

Buckles Solicitors LLP
Grant House
101 Bourges Boulevard
Peterborough
PE1 1NG

NEWARK PLAY ASSOCIATION LIMITED

Trustees' Annual Report

for the year ended 31 March 2022

The trustees who are also directors of the charity for the purposes of the Companies Act 2006, present their report with the financial statements of the charity for the year ended 31 March 2022.

Structure, governance, management and objectives

The charity is constituted by its governing document, and constitutes a limited company, limited by guarantee, as defined by the Companies Act 2006.

The company is also a registered charity with the Charity Commission and its registration number is 1026751.

The principal activities of the charitable company during the year was that of providing play facilities for the children of Peterborough.

The charity's objects are specifically restricted to providing and securing the provision of facilities and services for play, recreation and the advancement of education, especially but not exclusively through leisure time activities, for children resident in Peterborough in the county of Cambridgeshire, being facilities and services of which such children have need by reason of their youth or social and economic circumstances which will improve the conditions of life for such children by:

1. Promoting their physical, mental and spiritual wellbeing;
2. Advancing or assisting in the continued development of children's capabilities, competencies, skills and understanding;
3. Affording opportunities for adventure and enterprise; and
4. Affording opportunities for play-based learning to children below statutory school age.

Achievements and public benefit

New Ark Play Association welcomes children from all over Peterborough to their facilities, which includes a traditional adventure playground, an eco-garden and a city farm. The charity believes every child has a right to play. Play is a child's natural way of learning about the world, themselves and other people. Children need play opportunities that encourage exploration, adventure and enterprise. Having enough time and space for play increases children's health and happiness. Play makes life more interesting and fun. At New Ark, the children can enjoy all kinds of play, safely under adult supervision, indoors and out, all year round.

Adventure Playground - Many of the structures in our traditional adventure playground were handmade on site, using traditional building materials and discarded industrial parts. Children can explore risk in a controlled environment, supervised by professional play-workers who know when to let children work things out for themselves and when to help out. Children get heaps of exercise, fresh air and contact with the natural world and all the benefits of play.

City Farm - New Ark is the only City Farm in the Eastern Counties. We have a variety of animals and birds on the farm and our children learn how to handle and care for them under the supervision of our staff. There are also fresh free-range chicken and duck eggs for sale. You can sponsor an animal and there are opportunities for volunteering for young people and adults of all ages and abilities – including enrichment activities for Duke of Edinburgh and Princes Trust. We provide placements to animal care students and deliver animal care courses to the local colleges. We also offer social mornings for adults with additional needs, plus group and family visits, and children's parties.

Eco Centre - The Eco Centre with its woodland area, sensory garden and small orchard enables children to observe the life cycles of wild creatures. They also learn to appreciate the colours, shapes and scents of plants. The area contains both purpose-built and loose natural play structures, which are generally suitable for younger children.

The charity keeps charges as low as possible for our users and it ensures that a lack of money does not prevent children from enjoying the facilities.

The charity is members of: Early Years Alliance.

NEWARK PLAY ASSOCIATION LIMITED

Trustees' Annual Report (continued)

for the year ended 31 March 2022

Achievements and public benefit (continued)

Children are confident, articulate and friendly. They enjoy participating in a wide range of activities available to them at this unique provision. For example, they learn about animal care at the on-site farm, nature and exploration at the Eco centre and managing risks on play equipment in the extensive outdoor area. Parents also appreciate how much these activities benefit all aspects of their children's development.

Children regulate their own behaviour and manage risks well. They learn to take turns and to consider others. Children demonstrate a positive attitude to learning, which will support them well when they move on to school. They are eager to interact with each other and adults. Consequently, they develop their communication and language skills well.

Staff have a clear knowledge about what each child can do and what they need to learn next. The curriculum is planned so that each child enjoys rich learning opportunities and makes good progress in their learning and development. This is testified by parents.

Children show good physical skills as they navigate the obstacle course outside. They are able to balance on wooden blocks, climb, slide, and jump a given number of times on the small trampoline. Staff effectively support those children who require extra support. They work well with parents and other professionals to ensure that children fulfil their potential.

Throughout the year and indeed moving forward, we have updated our Covid-19 Pandemic measures with some safeguards remaining in place for the entire year, although some easing has taken place. We have protocols in place to try and protect the children to the very best of our ability and family are requested to act in a similar diligent manner to protect all children and families.

Despite many of the sanitisation procedures remaining in place, it is anticipated that normal operations can resume and continue for the benefit of the Peterborough community.

Induction of new trustees

The charity may, by ordinary resolution, appoint a person who is willing to be a Trustee. All Trustee's give their time voluntarily and received no benefits from the charity. New trustees are introduced via parents and friends. They are invited to meetings and enter into a trial period prior to appointment. DBS checks are performed on all trustees.

Day to Day Management

The Trustees have delegated the day to day management of the association to the two managers in charge of the Playgroup, Playground and Farm. The Trustees maintain an overview of the various activities.

Financial review

The results for the financial year are shown on pages 5 and 6 along with supporting notes from page 7 onwards.

As at 31 March 2022, Unrestricted Reserves held were £52,307 (2021 - £93,973) and Restricted Reserves held were £1,608 (2021 - £1,608).

Risk management

The trustees have a duty to identify and review the risks to which the charity is exposed and to ensure appropriate controls are in place to provide reasonable assurance against fraud and error.

Volunteers

The charity's 'farm' provides courses and visits to the local college and schools. Due to the existence of livestock the charity relies upon volunteers to look after and care for the animals. Volunteers are used on the 'farm' on a daily basis equating to approximately 30 hours per week, i.e. approximately 1,600 hours per annum. The charity also provides work experience places in conjunction with the local college which contributes to the overall level of public benefit provided by the Association. All volunteers go through the child protection policies of the charity.

NEWARK PLAY ASSOCIATION LIMITED

Trustees' Annual Report (continued)

for the year ended 31 March 2022

Reserves policy

The principal source of funding was through regular grants from Peterborough County Council which stopped in August 2021. Funding is now very irregular and is almost entirely through fund raising efforts by the trustees, families and friends of the Association. We are extremely grateful for the support from local businesses, the local community and rely upon grants that are available as and when they arise. The trustees understand that the level of reserves required needs to be sufficient in the event of further sudden drop in income caused by lack of continued funding and are seeking more income resources.

Trustees Responsibilities

The trustees are responsible for preparing the trustees' annual report and the financial statements in accordance with applicable law and United Kingdom Accounting Standards (United Kingdom Generally Accepted Accounting Practice).

Company law requires the trustees to prepare financial statements for each financial year, which give a true and fair view of the state of affairs of the charitable company and of the incoming resources and application of resources, including the income and expenditure, of the charitable company for that period. In preparing these financial statements, the trustees are required to:

- Select suitable accounting policies and then apply them consistently;
- Observe the methods and principles in the Charities SORP;
- Make judgements and estimates that are reasonable and prudent;
- State whether applicable UK Accounting Standards have been followed, subject to any material departures disclosed and explained in the financial statements.
- Prepare the financial statements on the going concern basis unless it is inappropriate to presume that the charitable company will continue in operation.

The trustees are responsible for keeping proper accounting records that disclose with reasonable accuracy at any time the financial position of the charitable company and enable them to ensure that the financial statements comply with the Companies Act 2006. They are also responsible for safeguarding the assets of the charitable company and hence for taking reasonable steps for the prevention and detection of fraud and other irregularities.

FOR AND ON BEHALF OF THE TRUSTEES

.....
Mrs. J. Curphey

Chair of trustees

Date:

**Independent Examiner's Report to the Trustees of
NEWARK PLAY ASSOCIATION LIMITED**

I report to the charity on my examination of the accounts of the charity for the year ended 31 March 2022, which are set out on pages 5 to 14.

Respective responsibilities of trustees and examiner

As the charity's trustees you are responsible for the preparation of the accounts in accordance with the requirements of the Charities Act 2011 ('the Act').

I report in respect of my examination of the charity's accounts carried out under section 145 of the Act and in carrying out my examination I have followed all the applicable directions given by the Charity Commission under section 145(5)(b) of the Act.

Independent examiner's statement

I have completed my examination. I confirm that no material matters have come to my attention in connection with the examination giving me cause to believe that in any material respect:

1. accounting records were not kept in respect of the charity as required by section 130 of the Act; or
2. the accounts do not accord with those records, or
3. the accounts do not comply with the applicable requirements concerning the form and content of accounts set out in the Charities (Accounts and Reports) Regulations 2008 other than any requirement that the accounts give a 'true and fair view' which is not a matter considered as part of an independent examination.

I have no concerns and have come across no other matters in connection with the examination to which attention should be drawn in this report in order to enable a proper understanding of the accounts to be reached.

.....
K.J. Maggs B.A., F.C.A.
Moore Thompson
Chartered Accountants
Spalding

Date:

NEWARK PLAY ASSOCIATION LIMITED

Statement of Financial Activities (including income and expenditure account)

for the year ended 31 March 2022

		2022		2021	
	Note	Unrestricted funds	Restricted funds	Total	Total
		£	£	£	£
INCOME					
Grants Receivable		5,500	98,516	104,016	165,371
Donations and gifts		8,326	-	8,326	6,254
Charitable activities		44,339	-	44,339	17,518
Interest receivable		12	-	12	18
Total income	2	58,177	98,516	156,693	189,161
EXPENDITURE					
Direct Charitable Expenditure					
Playground		22,396	-	22,396	17,278
Playgroup		(16,406)	72,771	56,365	70,743
Other		74,997	18,246	93,243	75,114
Total Direct Charitable Expenditure	3	80,987	91,017	172,004	163,135
Other expenditure					
Administration	4				
Salaries and pensions	50%	10,504	10,504	21,008	12,856
Independent examination	50%	592	592	1,184	1,380
Accountancy costs	50%	373	373	746	1,554
Professional Fees	50%	511	512	1,023	872
Subscriptions and licences	50%	484	485	969	400
Fundraising expenses	50%	40	41	81	-
Bank and payroll processing charges	50%	672	672	1,344	1,902
Total Other Expenditure		13,176	13,179	26,355	18,964
Total Expenditure		94,163	104,196	198,359	182,099
Net (expenditure) / income		(35,986)	(5,680)	(41,666)	7,062
Transfers	10	(5,680)	5,680	-	-
Net (expenditure) / income after transfers		(41,666)	-	(41,666)	7,062
Fund balances brought forward		93,973	1,608	95,581	88,519
Total funds carried forward	10	52,307	1,608	53,915	95,581

All income and expenditure derive from continuing activities.

The statement of financial activities includes all gains and losses recognised during the year.

The notes on pages 8 to 14 form a part of these accounts.

NEWARK PLAY ASSOCIATION LIMITED

**Balance Sheet
at 31 March 2022**

	Note	Unrestricted Funds £	2022 Restricted Funds £	Total £	2021 Total £
Fixed assets					
Tangible fixed assets	7	14,834	-	14,834	17,905
Current assets					
Debtors	8	3,413	-	3,413	2,958
Cash at bank		51,650	1,608	53,258	105,948
		55,063	1,608	56,671	108,906
Creditors:					
Amounts falling due within one year	9	17,590	-	17,590	31,230
Net current assets		37,473	1,608	39,081	77,676
Total assets less current liabilities		52,307	1,608	53,915	95,581
Funds	10				
Unrestricted		52,307	-	52,307	93,973
Restricted		-	1,608	1,608	1,608
		52,307	1,608	53,915	95,581

The trustees are satisfied that the charity is entitled to exemption from audit of the financial statements for the year under Section 477 of the Companies Act 2006 (the Act) relating to small companies and that the members have not required the company to obtain an audit in accordance with Section 476.

The trustees acknowledge their responsibilities for:

- (i) ensuring that the charity keeps proper accounting records which comply with section 386 of the Act, and
- (ii) preparing financial statements which give a true and fair view of the state of affairs of the charity as at the end of the financial year and of its profit or loss for the financial year in accordance with the requirements of section 396, and which otherwise comply with the requirements of the Act relating to financial statements, so far as applicable to the charity.

These financial statements have been prepared in accordance with the provisions applicable to companies subject to the small companies' regime and in accordance with FRS 102 'The Financial Reporting Standards applicable in the UK and Republic of Ireland'.

These financial statements were approved by the Trustees on and are signed on their behalf by:

.....
Mr. R. Brown
Treasurer

Company Registered No: 01712322

The notes on pages 8 to 14 form a part of these accounts.

NEWARK PLAY ASSOCIATION LIMITED

Notes to the Financial Statements

for the year ended 31 March 2022

1. Accounting policies

Basis of Preparation of Financial Statements

Newark Play Association Limited is company limited by guarantee registered in England and Wales. In the event of the charitable company being wound up, the liability in respect of the guarantee is limited to £1 per member of the charity. The address of the registered office of the charity is given in the charity information on page 1 of these financial statements. The nature of the charity's operations and principal activities are to provide play facilities for the children of member families.

The charity constitutes a public benefit entity as defined by FRS 102. The financial statements have been prepared in accordance with Accounting and Reporting by Charities: Statement of Recommended Practice applicable to charities preparing their accounts in accordance with the Financial Reporting Standard applicable in the UK and Republic of Ireland issued in October 2019, the Financial Reporting Standard applicable in the United Kingdom and Republic of Ireland (FRS 102) Section 1A, the Charities Act 2011, the Companies Act 2006 and UK Generally Accepted Accounting

The financial statements are prepared on a going concern basis under the historical cost convention, modified to include certain items at fair value. The financial statements are presented in sterling which is the functional currency of the charity.

The significant accounting policies applied in the preparation of these financial statements are set out below. These policies have been consistently applied to all years presented unless otherwise stated.

Cashflow Statement

The accounts do not include a cash flow statement because the company, as a small reporting entity, is exempt from the requirement to prepare such a statement under Financial Reporting Standard 102, section 1A.

Fixed assets

All fixed assets are initially recorded at cost.

Depreciation is calculated so as to write off the cost of an asset, less its estimated residual value, over the useful economic life of that asset as follows:

Leasehold buildings	10 years straight line
Fixtures and Fittings	15% straight line
Plant and Equipment	25% reducing balance

Debtors and creditors receivable / payable within one year

Debtors and creditors with no stated interest rate and receivable or payable within one year are recorded at transaction price. Any losses arising from impairment are recognised in expenditure.

Fund accounting

Unrestricted funds can be used in accordance with the charitable objectives at the discretion of the trustees.

Restricted funds can only be used for particular restricted purposes with the objectives of the charity. Restrictions arise when specified by the donor or when funds are raised for particular restricted purposes.

Incoming resources

All incoming resources are included on the Statement of Financial Activities when the charity is legally entitled to the income and the amount can be quantified with reasonable accuracy.

NEWARK PLAY ASSOCIATION LIMITED
Notes to the Financial Statements (continued)
for the year ended 31 March 2022

1. Accounting policies (continued)

Resources expended

Expenditure is included in the statement of financial activities on an accruals basis and has been classified under headings that aggregate all cost related to the category. Where costs cannot be directly attributed to particular headings they have been allocated to activities on a basis consistent with the use of resources.

Where expenditure cannot be directly attributed to particular headings they have been allocated on an estimated proportion of the cost relating to each project or activity undertaken by the charity. In each case this proportion is shown next to the costs.

Allocation and apportionment of costs

Charitable expenditure comprises those costs incurred by the charity in the delivery of its activities and services for its beneficiaries.

Governance costs include those costs associated with meeting the constitutional and statutory requirements of the charity and include the independent examiners fees and costs linked to the strategic management of the charity. These are within administration costs.

Support costs include all those overhead costs for utility services, and other services and costs, which are in support of the activity. They have been allocated to activity cost categories on a basis consistent with the use of resources. These are within administration costs.

Pension costs

The charity operates a defined contribution pension scheme for employees. The assets of the scheme are held separately from those of the charity. The annual contributions payable are charged to the Statement of Financial Activity.

Operating lease agreements

Rentals applicable to operating leases where substantially all of the benefits and risks of ownership remain with the lessor are charged against or credited to profits on a straight line basis over the period of the lease.

Taxation

The charity is an exempt charity within the meaning of schedule 3 of the Charities Act 2011 and is considered to pass the tests set out in Paragraph 1 Schedule 6 Finance Act 2010 and therefore it meets the definition of a charitable company for UK corporation tax purposes.

Going concern

The financial statements have been prepared on a going concern basis as the trustees believe that no material uncertainties exist. The trustees have considered the level of funds held and the expected level of income and expenditure for 12 months from authorising these financial statements. The budgeted income and expenditure is sufficient with the level of reserves for the charity to be able to continue as a going concern.

Judgements and key sources of estimation uncertainty

The preparation of the financial statements requires management to make judgements, estimates and assumptions that affect the amounts reported. These estimates and judgements are continually reviewed and are based on experience and other factors, including expectations of future events that are believed to be reasonable under the circumstances.

NEWARK PLAY ASSOCIATION LIMITED
Notes to the Financial Statements (continued)
for the year ended 31 March 2022

2. Incoming Resources

	2022			2021
	Unrestricted Funds £	Restricted Funds £	Total £	Total £
Grants received				
Peterborough County Council	-	98,516	98,516	98,028
Government grants - Covid-19	-	-	-	61,343
Institutional grants	1,500	-	1,500	2,000
Annual employment allowance	4,000	-	4,000	4,000
Donations and gifts				
Fundraising events	19	-	19	1,108
Donations and gifts	8,307	-	8,307	5,146
Charitable activities				
Children's fees	3,582	-	3,582	16,924
Support Service	7,390	-	7,390	-
Paid sessions	28,812	-	28,812	-
Farm and Gardens	4,310	-	4,310	500
Tuck shop	-	-	-	-
Other income	245	-	245	94
Interest receivable				
Bank Interest	12	-	12	18
	<u>58,177</u>	<u>98,516</u>	<u>156,693</u>	<u>189,161</u>

3. Direct Charitable Expenditure

		2022			2021
		Unrestricted Funds £	Restricted Funds £	Total £	Total £
Salaries and pensions					
Playground	0%	21,427	-	21,427	16,878
Playgroup	Actual	-	54,531	54,531	69,086
Cleaner	50%	4,902	4,902	9,804	2,857
Farm	30%	19,046	8,162	27,208	22,698
Support	Actual	21,423	-	21,423	22,509
Pension	Actual	1,404	430	1,834	1,657
Other Expenses					
Playgroup / Playground	Actual	1,704	1,380	3,084	597
Farm	30%	1,531	656	2,187	1,239
Health and safety	50%	400	401	801	935
Rent and rates	75%	873	2,620	3,493	3,980
Insurance	75%	1,221	3,662	4,883	4,717
Electricity	75%	3,173	9,519	12,692	7,347
Repairs and maintenance	50%	388	389	777	1,797
IT support and costs	50%	226	227	453	203
Postage, Stationery and Printing	50%	342	342	684	383
Telephone and Internet	75%	219	656	875	676
Waste disposal	75%	214	643	857	132
Cleaning materials	50%	360	361	721	1,197
Pest control	50%	269	269	538	760
Sundry expenses	50%	252	253	505	465
Depreciation	50%	1,613	1,614	3,227	3,022
		<u>80,987</u>	<u>91,017</u>	<u>172,004</u>	<u>163,135</u>

NEWARK PLAY ASSOCIATION LIMITED
Notes to the Financial Statements (continued)
for the year ended 31 March 2022

4. Administration costs

The costs of administration have been allocated between funds based on the percentages shown on the Statement of Financial Activities.

5. Employee Emoluments

	2022 £	2021 £
Salaries	149,236	141,750
Social security costs	6,165	5,134
Employer's contribution to defined contribution pension scheme	1,834	1,657
	157,235	148,541

There are no employees who received emoluments exceeding £60,000

	2022	2021
Average number of employees during the year	13	19

6. Related Party Transactions

Trustee remuneration for the year was £nil (2021 - £nil).

No refund of expenses incurred in relation to charitable activities in the year (2021, Mr R Brown - £42).

7. Tangible fixed assets

	Leasehold & Freehold Buildings £	Fixtures and Fittings £	Plant and Equipment £	Total £
Cost				
Brought forward at 31 March 2021	65,817	29,292	10,251	105,360
Additions	-	-	156	156
Carried forward at 31 March 2022	65,817	29,292	10,407	105,516
Depreciation				
Brought forward at 31 March 2021	54,038	24,976	8,441	87,455
Charge for the year	1,649	1,086	492	3,227
Carried forward at 31 March 2022	55,687	26,062	8,933	90,682
Net book value				
At 31st March 2022	10,130	3,230	1,474	14,834
At 31st March 2021	11,779	4,316	1,810	17,905

8. Debtors

	2022 £	2021 £
Debtors	2,370	1,362
Prepayments	1,043	1,596
	3,413	2,958

NEWARK PLAY ASSOCIATION LIMITED
Notes to the Financial Statements (continued)
for the year ended 31 March 2022

9. Creditors

	2022	2021
	£	£
Trade creditors	2,058	5,154
Taxation and Social security	1,233	1,153
Other creditors	355	281
Accruals	2,726	2,880
Deferred Income	11,218	21,762
	17,590	31,230

10. Funds

	At 31 March 2021	Incoming Resources	Outgoing Resources	Adjustments / Transfers	At 31 March 2022
2022	£	£	£	£	£
Unrestricted funds					
General fund	93,973	58,177	(94,163)	(5,680)	52,307
	93,973	58,177	(94,163)	(5,680)	52,307
Restricted funds					
Early Years Learning	-	98,516	(104,196)	5,680	-
Farm shed	500	-	-	-	500
Sensory Room	1,108	-	-	-	1,108
	1,608	98,516	(104,196)	5,680	1,608
Total funds	95,581	156,693	(198,359)	-	53,915

The Early Years Learning funds are received for the purposes of providing Early Years Learning. The charity has been required to use core funding to enable it provide the activities.

The farm shed funds were provided for the acquisition of and the construction of a shed for the farm. At the year end the shed had been acquired and therefore the restriction applied but it had yet to be constructed. Once the relevant element has been completed the funds are no longer restricted.

The Sensory Room funds were raised towards funding of room designed to help an individual with sensory issues learn to regulate their brain's negative reactions to external stimuli by developing coping skills for these experiences. The funds raised to date have been designated for this purpose and cannot be used for any other activity without prior consent.

The funds are constituted as follows:

	2022 Unrestricted Funds	2022 Restricted Funds	Total
	£	£	£
Fixed assets	14,834	-	14,834
Debtors	3,413	-	3,413
Cash at bank and in hand	51,650	1,608	53,258
Creditors	(17,590)	-	(17,590)
	52,307	1,608	53,915

NEWARK PLAY ASSOCIATION LIMITED
Notes to the Financial Statements (continued)
for the year ended 31 March 2022

10. Funds (continued)

2021	At 31 March 2020	Incoming Resources	Outgoing Resources	Adjustments / Transfers	At 30 March 2021
	£	£	£	£	£
Unrestricted funds					
General fund	8,711	186,603	(182,099)	80,758	93,973
Restricted funds					
Playground and Playgroup	79,808	2,558	-	(80,758)	1,608
Total funds	88,519	189,161	(182,099)	-	95,581

The funds are constituted as follows:

	Unrestricted Funds	2021 Restricted Funds	Total
	£	£	£
Fixed assets	17,905	-	17,905
Debtors	2,958	-	2,958
Cash at bank and in hand	104,340	1,608	105,948
Creditors	(31,230)	-	(31,230)
	93,973	1,608	95,581

11. SOFA comparatives

INCOMING RESOURCES	Unrestricted funds	2021 Restricted funds	Total
	£	£	£
Grants receivable	165,371	-	165,371
Donations and gifts	3,696	2,558	6,254
Interest receivable	17,518	-	17,518
Other income	18	-	18
Total incoming resources	186,603	2,558	189,161

NEWARK PLAY ASSOCIATION LIMITED
Notes to the Financial Statements (continued)
for the year ended 31 March 2022

11. SOFA comparatives (continued)

RESOURCES EXPENDED:

	Unrestricted funds	2021 Restricted funds	Total
	£	£	£
Direct Charitable Expenditure			
Playground	17,278	-	17,278
Playgroup	70,743	-	70,743
Other	75,114	-	75,114
Total Direct Charitable Expenditure	163,135	-	163,135
Other expenditure			
Administration			
Salaries	12,856	-	12,856
Independent examination	1,380	-	1,380
Accountancy costs	1,554	-	1,554
Professional Fees	872	-	872
Membership Costs	400	-	400
Fundraising expenses	-	-	-
Bank and payroll processing charges	1,902	-	1,902
	18,964	-	18,964
Total resources expended	182,099	-	182,099
Net incomings	4,504	2,558	7,062
Transfers	80,758	(80,758)	-
Fund balance brought forward	8,711	79,808	88,519
Funds carried forward	93,973	1,608	95,581

COMPANY REGISTERED NO: 01712322

NEWARK PLAY ASSOCIATION LIMITED
CHARITY COMMISSION REGISTERED NO: 1026751

STATEMENT OF ACCOUNTS

for the year ended

31 March 2022

NEWARK PLAY ASSOCIATION LIMITED

Contents Page

for the year ended 31 March 2022

INDEX

Legal and Administrative Information	1
Trustees' Annual Report	2 to 4
Independent Examiner's Report	5
Statement of Financial Activities	6
Balance Sheet	7
Notes to the Financial Statements	8 to 14

NEWARK PLAY ASSOCIATION LIMITED

Legal and Administrative Information

for the year ended 31 March 2022

Registered office

Hill Close
Off Reeves Way
Peterborough
PE1 5LZ

Directors and Trustees

Mrs. J. Curphey	Chair of trustees
Mr. R. Brown	Treasurer
Mrs. C. Butler	
Mr. S. Milford	
Miss. L. Sachse	
Mrs. R. L. Scotten	

Independent Examiner

K J Maggs F.C.A.
Moore Thompson
Bank House
Broad Street
Spalding
Lincs
PE11 1TB

Bankers

Barclays Bank Plc
1 Church Street
Peterborough
PE1 1XE

Solicitors

Buckles Solicitors LLP
Grant House
101 Bourges Boulevard
Peterborough
PE1 1NG

NEWARK PLAY ASSOCIATION LIMITED

Trustees' Annual Report

for the year ended 31 March 2022

The trustees who are also directors of the charity for the purposes of the Companies Act 2006, present their report with the financial statements of the charity for the year ended 31 March 2022.

Structure, governance, management and objectives

The charity is constituted by its governing document, and constitutes a limited company, limited by guarantee, as defined by the Companies Act 2006.

The company is also a registered charity with the Charity Commission and its registration number is 1026751.

The principal activities of the charitable company during the year was that of providing play facilities for the children of Peterborough.

The charity's objects are specifically restricted to providing and securing the provision of facilities and services for play, recreation and the advancement of education, especially but not exclusively through leisure time activities, for children resident in Peterborough in the county of Cambridgeshire, being facilities and services of which such children have need by reason of their youth or social and economic circumstances which will improve the conditions of life for such children by:

1. Promoting their physical, mental and spiritual wellbeing;
2. Advancing or assisting in the continued development of children's capabilities, competencies, skills and understanding;
3. Affording opportunities for adventure and enterprise; and
4. Affording opportunities for play-based learning to children below statutory school age.

Achievements and public benefit

New Ark Play Association welcomes children from all over Peterborough to their facilities, which includes a traditional adventure playground, an eco-garden and a city farm. The charity believes every child has a right to play. Play is a child's natural way of learning about the world, themselves and other people. Children need play opportunities that encourage exploration, adventure and enterprise. Having enough time and space for play increases children's health and happiness. Play makes life more interesting and fun. At New Ark, the children can enjoy all kinds of play, safely under adult supervision, indoors and out, all year round.

Adventure Playground - Many of the structures in our traditional adventure playground were handmade on site, using traditional building materials and discarded industrial parts. Children can explore risk in a controlled environment, supervised by professional play-workers who know when to let children work things out for themselves and when to help out. Children get heaps of exercise, fresh air and contact with the natural world and all the benefits of play.

City Farm - New Ark is the only City Farm in the Eastern Counties. We have a variety of animals and birds on the farm and our children learn how to handle and care for them under the supervision of our staff. There are also fresh free-range chicken and duck eggs for sale. You can sponsor an animal and there are opportunities for volunteering for young people and adults of all ages and abilities – including enrichment activities for Duke of Edinburgh and Princes Trust. We provide placements to animal care students and deliver animal care courses to the local colleges. We also offer social mornings for adults with additional needs, plus group and family visits, and children's parties.

Eco Centre - The Eco Centre with its woodland area, sensory garden and small orchard enables children to observe the life cycles of wild creatures. They also learn to appreciate the colours, shapes and scents of plants. The area contains both purpose-built and loose natural play structures, which are generally suitable for younger children.

The charity keeps charges as low as possible for our users and it ensures that a lack of money does not prevent children from enjoying the facilities.

The charity is members of: Early Years Alliance.

NEWARK PLAY ASSOCIATION LIMITED

Trustees' Annual Report (continued)

for the year ended 31 March 2022

Achievements and public benefit (continued)

Children are confident, articulate and friendly. They enjoy participating in a wide range of activities available to them at this unique provision. For example, they learn about animal care at the on-site farm, nature and exploration at the Eco centre and managing risks on play equipment in the extensive outdoor area. Parents also appreciate how much these activities benefit all aspects of their children's development.

Children regulate their own behaviour and manage risks well. They learn to take turns and to consider others. Children demonstrate a positive attitude to learning, which will support them well when they move on to school. They are eager to interact with each other and adults. Consequently, they develop their communication and language skills well.

Staff have a clear knowledge about what each child can do and what they need to learn next. The curriculum is planned so that each child enjoys rich learning opportunities and makes good progress in their learning and development. This is testified by parents.

Children show good physical skills as they navigate the obstacle course outside. They are able to balance on wooden blocks, climb, slide, and jump a given number of times on the small trampoline. Staff effectively support those children who require extra support. They work well with parents and other professionals to ensure that children fulfil their potential.

Throughout the year and indeed moving forward, we have updated our Covid-19 Pandemic measures with some safeguards remaining in place for the entire year, although some easing has taken place. We have protocols in place to try and protect the children to the very best of our ability and family are requested to act in a similar diligent manner to protect all children and families.

Despite many of the sanitisation procedures remaining in place, it is anticipated that normal operations can resume and continue for the benefit of the Peterborough community.

Induction of new trustees

The charity may, by ordinary resolution, appoint a person who is willing to be a Trustee. All Trustees give their time voluntarily and received no benefits from the charity. New trustees are introduced via parents and friends. They are invited to meetings and enter into a trial period prior to appointment. DBS checks are performed on all trustees.

Day to Day Management

The Trustees have delegated the day to day management of the association to the two managers in charge of the Playgroup, Playground and Farm. The Trustees maintain an overview of the various activities.

Financial review

The results for the financial year are shown on pages 5 and 6 along with supporting notes from page 7 onwards.

As at 31 March 2022, Unrestricted Reserves held were £52,307 (2021 - £93,973) and Restricted Reserves held were £1,608 (2021 - £1,608).

Risk management

The trustees have a duty to identify and review the risks to which the charity is exposed and to ensure appropriate controls are in place to provide reasonable assurance against fraud and error.

Volunteers

The charity's 'farm' provides courses and visits to the local college and schools. Due to the existence of livestock the charity relies upon volunteers to look after and care for the animals. Volunteers are used on the 'farm' on a daily basis equating to approximately 30 hours per week, i.e. approximately 1,600 hours per annum. The charity also provides work experience places in conjunction with the local college which contributes to the overall level of public benefit provided by the Association. All volunteers go through the child protection policies of the charity.

NEWARK PLAY ASSOCIATION LIMITED

Trustees' Annual Report (continued)

for the year ended 31 March 2022

Reserves policy

The principal source of funding was through regular grants from Peterborough County Council which stopped in August 2021. Funding is now very irregular and is almost entirely through fund raising efforts by the trustees, families and friends of the Association. We are extremely grateful for the support from local businesses, the local community and rely upon grants that are available as and when they arise. The trustees understand that the level of reserves required needs to be sufficient in the event of further sudden drop in income caused by lack of continued funding and are seeking more income resources.

Trustees Responsibilities

The trustees are responsible for preparing the trustees' annual report and the financial statements in accordance with applicable law and United Kingdom Accounting Standards (United Kingdom Generally Accepted Accounting Practice).

Company law requires the trustees to prepare financial statements for each financial year, which give a true and fair view of the state of affairs of the charitable company and of the incoming resources and application of resources, including the income and expenditure, of the charitable company for that period. In preparing these financial statements, the trustees are required to:

- Select suitable accounting policies and then apply them consistently;
- Observe the methods and principles in the Charities SORP;
- Make judgements and estimates that are reasonable and prudent;
- State whether applicable UK Accounting Standards have been followed, subject to any material departures disclosed and explained in the financial statements.
- Prepare the financial statements on the going concern basis unless it is inappropriate to presume that the charitable company will continue in operation.

The trustees are responsible for keeping proper accounting records that disclose with reasonable accuracy at any time the financial position of the charitable company and enable them to ensure that the financial statements comply with the Companies Act 2006. They are also responsible for safeguarding the assets of the charitable company and hence for taking reasonable steps for the prevention and detection of fraud and other irregularities.

FOR AND ON BEHALF OF THE TRUSTEES

.....
Mrs. J. Curphey

Chair of trustees

Date:

**Independent Examiner's Report to the Trustees of
NEWARK PLAY ASSOCIATION LIMITED**

I report to the charity on my examination of the accounts of the charity for the year ended 31 March 2022, which are set out on pages 5 to 14.

Respective responsibilities of trustees and examiner

As the charity's trustees you are responsible for the preparation of the accounts in accordance with the requirements of the Charities Act 2011 ('the Act').

I report in respect of my examination of the charity's accounts carried out under section 145 of the Act and in carrying out my examination I have followed all the applicable directions given by the Charity Commission under section 145(5)(b) of the Act.

Independent examiner's statement

I have completed my examination. I confirm that no material matters have come to my attention in connection with the examination giving me cause to believe that in any material respect:

1. accounting records were not kept in respect of the charity as required by section 130 of the Act; or
2. the accounts do not accord with those records, or
3. the accounts do not comply with the applicable requirements concerning the form and content of accounts set out in the Charities (Accounts and Reports) Regulations 2008 other than any requirement that the accounts give a 'true and fair view' which is not a matter considered as part of an independent examination.

I have no concerns and have come across no other matters in connection with the examination to which attention should be drawn in this report in order to enable a proper understanding of the accounts to be reached.

.....
K.J. Maggs B.A., F.C.A.
Moore Thompson
Chartered Accountants
Spalding

Date:

NEWARK PLAY ASSOCIATION LIMITED

Statement of Financial Activities (including income and expenditure account)

for the year ended 31 March 2022

		2022		2021	
	Note	Unrestricted funds	Restricted funds	Total	Total
		£	£	£	£
INCOME					
Grants Receivable		5,500	98,516	104,016	165,371
Donations and gifts		8,326	-	8,326	6,254
Charitable activities		44,339	-	44,339	17,518
Interest receivable		12	-	12	18
Total income	2	58,177	98,516	156,693	189,161
EXPENDITURE					
Direct Charitable Expenditure					
Playground		22,396	-	22,396	17,278
Playgroup		(16,406)	72,771	56,365	70,743
Other		74,997	18,246	93,243	75,114
Total Direct Charitable Expenditure	3	80,987	91,017	172,004	163,135
Other expenditure					
Administration	4				
Salaries and pensions	50%	10,504	10,504	21,008	12,856
Independent examination	50%	592	592	1,184	1,380
Accountancy costs	50%	373	373	746	1,554
Professional Fees	50%	511	512	1,023	872
Subscriptions and licences	50%	484	485	969	400
Fundraising expenses	50%	40	41	81	-
Bank and payroll processing charges	50%	672	672	1,344	1,902
Total Other Expenditure		13,176	13,179	26,355	18,964
Total Expenditure		94,163	104,196	198,359	182,099
Net (expenditure) / income		(35,986)	(5,680)	(41,666)	7,062
Transfers	10	(5,680)	5,680	-	-
Net (expenditure) / income after transfers		(41,666)	-	(41,666)	7,062
Fund balances brought forward		93,973	1,608	95,581	88,519
Total funds carried forward	10	52,307	1,608	53,915	95,581

All income and expenditure derive from continuing activities.

The statement of financial activities includes all gains and losses recognised during the year.

The notes on pages 8 to 14 form a part of these accounts.

NEWARK PLAY ASSOCIATION LIMITED

**Balance Sheet
at 31 March 2022**

		2022		2021	
	Note	Unrestricted Funds £	Restricted Funds £	Total £	Total £
Fixed assets					
Tangible fixed assets	7	14,834	-	14,834	17,905
Current assets					
Debtors	8	3,413	-	3,413	2,958
Cash at bank		51,650	1,608	53,258	105,948
		55,063	1,608	56,671	108,906
Creditors:					
Amounts falling due within one year	9	17,590	-	17,590	31,230
Net current assets		37,473	1,608	39,081	77,676
Total assets less current liabilities		52,307	1,608	53,915	95,581
Funds	10				
Unrestricted		52,307	-	52,307	93,973
Restricted		-	1,608	1,608	1,608
		52,307	1,608	53,915	95,581

The trustees are satisfied that the charity is entitled to exemption from audit of the financial statements for the year under Section 477 of the Companies Act 2006 (the Act) relating to small companies and that the members have not required the company to obtain an audit in accordance with Section 476.

The trustees acknowledge their responsibilities for:

- (i) ensuring that the charity keeps proper accounting records which comply with section 386 of the Act, and
- (ii) preparing financial statements which give a true and fair view of the state of affairs of the charity as at the end of the financial year and of its profit or loss for the financial year in accordance with the requirements of section 396, and which otherwise comply with the requirements of the Act relating to financial statements, so far as applicable to the charity.

These financial statements have been prepared in accordance with the provisions applicable to companies subject to the small companies' regime and in accordance with FRS 102 'The Financial Reporting Standards applicable in the UK and Republic of Ireland'.

These financial statements were approved by the Trustees on and are signed on their behalf by:

.....
Mr. R. Brown
Treasurer

Company Registered No: 01712322

The notes on pages 8 to 14 form a part of these accounts.

NEWARK PLAY ASSOCIATION LIMITED

Notes to the Financial Statements

for the year ended 31 March 2022

1. Accounting policies

Basis of Preparation of Financial Statements

Newark Play Association Limited is company limited by guarantee registered in England and Wales. In the event of the charitable company being wound up, the liability in respect of the guarantee is limited to £1 per member of the charity. The address of the registered office of the charity is given in the charity information on page 1 of these financial statements. The nature of the charity's operations and principal activities are to provide play facilities for the children of member families.

The charity constitutes a public benefit entity as defined by FRS 102. The financial statements have been prepared in accordance with Accounting and Reporting by Charities: Statement of Recommended Practice applicable to charities preparing their accounts in accordance with the Financial Reporting Standard applicable in the UK and Republic of Ireland issued in October 2019, the Financial Reporting Standard applicable in the United Kingdom and Republic of Ireland (FRS 102) Section 1A, the Charities Act 2011, the Companies Act 2006 and UK Generally Accepted Accounting

The financial statements are prepared on a going concern basis under the historical cost convention, modified to include certain items at fair value. The financial statements are presented in sterling which is the functional currency of the charity.

The significant accounting policies applied in the preparation of these financial statements are set out below. These policies have been consistently applied to all years presented unless otherwise stated.

Cashflow Statement

The accounts do not include a cash flow statement because the company, as a small reporting entity, is exempt from the requirement to prepare such a statement under Financial Reporting Standard 102, section 1A.

Fixed assets

All fixed assets are initially recorded at cost.

Depreciation is calculated so as to write off the cost of an asset, less its estimated residual value, over the useful economic life of that asset as follows:

Leasehold buildings	10 years straight line
Fixtures and Fittings	15% straight line
Plant and Equipment	25% reducing balance

Debtors and creditors receivable / payable within one year

Debtors and creditors with no stated interest rate and receivable or payable within one year are recorded at transaction price. Any losses arising from impairment are recognised in expenditure.

Fund accounting

Unrestricted funds can be used in accordance with the charitable objectives at the discretion of the trustees.

Restricted funds can only be used for particular restricted purposes with the objectives of the charity. Restrictions arise when specified by the donor or when funds are raised for particular restricted purposes.

Incoming resources

All incoming resources are included on the Statement of Financial Activities when the charity is legally entitled to the income and the amount can be quantified with reasonable accuracy.

NEWARK PLAY ASSOCIATION LIMITED
Notes to the Financial Statements (continued)
for the year ended 31 March 2022

1. Accounting policies (continued)

Resources expended

Expenditure is included in the statement of financial activities on an accruals basis and has been classified under headings that aggregate all cost related to the category. Where costs cannot be directly attributed to particular headings they have been allocated to activities on a basis consistent with the use of resources.

Where expenditure cannot be directly attributed to particular headings they have been allocated on an estimated proportion of the cost relating to each project or activity undertaken by the charity. In each case this proportion is shown next to the costs.

Allocation and apportionment of costs

Charitable expenditure comprises those costs incurred by the charity in the delivery of its activities and services for its beneficiaries.

Governance costs include those costs associated with meeting the constitutional and statutory requirements of the charity and include the independent examiners fees and costs linked to the strategic management of the charity. These are within administration costs.

Support costs include all those overhead costs for utility services, and other services and costs, which are in support of the activity. They have been allocated to activity cost categories on a basis consistent with the use of resources. These are within administration costs.

Pension costs

The charity operates a defined contribution pension scheme for employees. The assets of the scheme are held separately from those of the charity. The annual contributions payable are charged to the Statement of Financial Activity.

Operating lease agreements

Rentals applicable to operating leases where substantially all of the benefits and risks of ownership remain with the lessor are charged against or credited to profits on a straight line basis over the period of the lease.

Taxation

The charity is an exempt charity within the meaning of schedule 3 of the Charities Act 2011 and is considered to pass the tests set out in Paragraph 1 Schedule 6 Finance Act 2010 and therefore it meets the definition of a charitable company for UK corporation tax purposes.

Going concern

The financial statements have been prepared on a going concern basis as the trustees believe that no material uncertainties exist. The trustees have considered the level of funds held and the expected level of income and expenditure for 12 months from authorising these financial statements. The budgeted income and expenditure is sufficient with the level of reserves for the charity to be able to continue as a going concern.

Judgements and key sources of estimation uncertainty

The preparation of the financial statements requires management to make judgements, estimates and assumptions that affect the amounts reported. These estimates and judgements are continually reviewed and are based on experience and other factors, including expectations of future events that are believed to be reasonable under the circumstances.

NEWARK PLAY ASSOCIATION LIMITED
Notes to the Financial Statements (continued)
for the year ended 31 March 2022

2. Incoming Resources

	2022			2021
	Unrestricted Funds £	Restricted Funds £	Total £	Total £
Grants received				
Peterborough County Council	-	98,516	98,516	98,028
Government grants - Covid-19	-	-	-	61,343
Institutional grants	1,500	-	1,500	2,000
Annual employment allowance	4,000	-	4,000	4,000
Donations and gifts				
Fundraising events	19	-	19	1,108
Donations and gifts	8,307	-	8,307	5,146
Charitable activities				
Children's fees	3,582	-	3,582	16,924
Support Service	7,390	-	7,390	-
Paid sessions	28,812	-	28,812	-
Farm and Gardens	4,310	-	4,310	500
Tuck shop	-	-	-	-
Other income	245	-	245	94
Interest receivable				
Bank Interest	12	-	12	18
	<u>58,177</u>	<u>98,516</u>	<u>156,693</u>	<u>189,161</u>

3. Direct Charitable Expenditure

		2022			2021
		Unrestricted Funds £	Restricted Funds £	Total £	Total £
Salaries and pensions					
Playground	0%	21,427	-	21,427	16,878
Playgroup	Actual	-	54,531	54,531	69,086
Cleaner	50%	4,902	4,902	9,804	2,857
Farm	30%	19,046	8,162	27,208	22,698
Support	Actual	21,423	-	21,423	22,509
Pension	Actual	1,404	430	1,834	1,657
Other Expenses					
Playgroup / Playground	Actual	1,704	1,380	3,084	597
Farm	30%	1,531	656	2,187	1,239
Health and safety	50%	400	401	801	935
Rent and rates	75%	873	2,620	3,493	3,980
Insurance	75%	1,221	3,662	4,883	4,717
Electricity	75%	3,173	9,519	12,692	7,347
Repairs and maintenance	50%	388	389	777	1,797
IT support and costs	50%	226	227	453	203
Postage, Stationery and Printing	50%	342	342	684	383
Telephone and Internet	75%	219	656	875	676
Waste disposal	75%	214	643	857	132
Cleaning materials	50%	360	361	721	1,197
Pest control	50%	269	269	538	760
Sundry expenses	50%	252	253	505	465
Depreciation	50%	1,613	1,614	3,227	3,022
		<u>80,987</u>	<u>91,017</u>	<u>172,004</u>	<u>163,135</u>

NEWARK PLAY ASSOCIATION LIMITED
Notes to the Financial Statements (continued)
for the year ended 31 March 2022

4. Administration costs

The costs of administration have been allocated between funds based on the percentages shown on the Statement of Financial Activities.

5. Employee Emoluments

	2022	2021
	£	£
Salaries	149,236	141,750
Social security costs	6,165	5,134
Employer's contribution to defined contribution pension scheme	1,834	1,657
	157,235	148,541

There are no employees who received emoluments exceeding £60,000

	2022	2021
Average number of employees during the year	13	19

6. Related Party Transactions

Trustee remuneration for the year was £nil (2021 - £nil).

No refund of expenses incurred in relation to charitable activities in the year (2021, Mr R Brown - £42).

7. Tangible fixed assets

	Leasehold & Freehold Buildings £	Fixtures and Fittings £	Plant and Equipment £	Total £
Cost				
Brought forward at 31 March 2021	65,817	29,292	10,251	105,360
Additions	-	-	156	156
Carried forward at 31 March 2022	65,817	29,292	10,407	105,516
Depreciation				
Brought forward at 31 March 2021	54,038	24,976	8,441	87,455
Charge for the year	1,649	1,086	492	3,227
Carried forward at 31 March 2022	55,687	26,062	8,933	90,682
Net book value				
At 31st March 2022	10,130	3,230	1,474	14,834
At 31st March 2021	11,779	4,316	1,810	17,905

8. Debtors

	2022	2021
	£	£
Debtors	2,370	1,362
Prepayments	1,043	1,596
	3,413	2,958

NEWARK PLAY ASSOCIATION LIMITED
Notes to the Financial Statements (continued)
for the year ended 31 March 2022

9. Creditors

	2022	2021
	£	£
Trade creditors	2,058	5,154
Taxation and Social security	1,233	1,153
Other creditors	355	281
Accruals	2,726	2,880
Deferred Income	11,218	21,762
	17,590	31,230

10. Funds

	At 31 March 2021	Incoming Resources	Outgoing Resources	Adjustments / Transfers	At 31 March 2022
	£	£	£	£	£
Unrestricted funds					
General fund	93,973	58,177	(94,163)	(5,680)	52,307
	93,973	58,177	(94,163)	(5,680)	52,307
Restricted funds					
Early Years Learning	-	98,516	(104,196)	5,680	-
Farm shed	500	-	-	-	500
Sensory Room	1,108	-	-	-	1,108
	1,608	98,516	(104,196)	5,680	1,608
Total funds	95,581	156,693	(198,359)	-	53,915

The Early Years Learning funds are received for the purposes of providing Early Years Learning. The charity has been required to use core funding to enable it provide the activities.

The farm shed funds were provided for the acquisition of and the construction of a shed for the farm. At the year end the shed had been acquired and therefore the restriction applied but it had yet to be constructed. Once the relevant element has been completed the funds are no longer restricted.

The Sensory Room funds were raised towards funding of room designed to help an individual with sensory issues learn to regulate their brain's negative reactions to external stimuli by developing coping skills for these experiences. The funds raised to date have been designated for this purpose and cannot be used for any other activity without prior consent.

The funds are constituted as follows:

	2022 Unrestricted Funds	2022 Restricted Funds	Total
	£	£	£
Fixed assets	14,834	-	14,834
Debtors	3,413	-	3,413
Cash at bank and in hand	51,650	1,608	53,258
Creditors	(17,590)	-	(17,590)
	52,307	1,608	53,915

NEWARK PLAY ASSOCIATION LIMITED
Notes to the Financial Statements (continued)
for the year ended 31 March 2022

10. Funds (continued)

2021	At 31 March 2020	Incoming Resources	Outgoing Resources	Adjustments / Transfers	At 30 March 2021
	£	£	£	£	£
Unrestricted funds					
General fund	8,711	186,603	(182,099)	80,758	93,973
Restricted funds					
Playground and Playgroup	79,808	2,558	-	(80,758)	1,608
Total funds	88,519	189,161	(182,099)	-	95,581

The funds are constituted as follows:

	Unrestricted Funds	2021 Restricted Funds	Total
	£	£	£
Fixed assets	17,905	-	17,905
Debtors	2,958	-	2,958
Cash at bank and in hand	104,340	1,608	105,948
Creditors	(31,230)	-	(31,230)
	93,973	1,608	95,581

11. SOFA comparatives

INCOMING RESOURCES	Unrestricted funds	2021 Restricted funds	Total
	£	£	£
Grants receivable	165,371	-	165,371
Donations and gifts	3,696	2,558	6,254
Interest receivable	17,518	-	17,518
Other income	18	-	18
Total incoming resources	186,603	2,558	189,161

NEWARK PLAY ASSOCIATION LIMITED
Notes to the Financial Statements (continued)
for the year ended 31 March 2022

11. SOFA comparatives (continued)

RESOURCES EXPENDED:

	Unrestricted funds	2021 Restricted funds	Total
	£	£	£
Direct Charitable Expenditure			
Playground	17,278	-	17,278
Playgroup	70,743	-	70,743
Other	75,114	-	75,114
Total Direct Charitable Expenditure	163,135	-	163,135
Other expenditure			
Administration			
Salaries	12,856	-	12,856
Independent examination	1,380	-	1,380
Accountancy costs	1,554	-	1,554
Professional Fees	872	-	872
Membership Costs	400	-	400
Fundraising expenses	-	-	-
Bank and payroll processing charges	1,902	-	1,902
	18,964	-	18,964
Total resources expended	182,099	-	182,099
Net incomings	4,504	2,558	7,062
Transfers	80,758	(80,758)	-
Fund balance brought forward	8,711	79,808	88,519
Funds carried forward	93,973	1,608	95,581