

Charity name: Cheltenham District Scout Council

Charity registration number: 1021577

Trustees' Annual Report and Accounts
for the year to 31 March 2021

Reference and Administrative details

Charity name	Cheltenham District Scout Council
Registered charity number	1021577
Charity's principal contact address	55 Huckley Way Bradley Stoke Bristol BS32 8AR Tel: 07515751007 Email: secretary@cheltenham-scouts.org.uk Website: www.cheltenham-scouts.org.uk

Objectives and Activities

Summary of the purposes of the charity as set out in its governing document	To promote the development of young people in achieving their full physical, intellectual, social and spiritual potentials, as individuals as responsible citizens and as members of their local, national and international communities.
Summary of the main activities in relation to those purposes for the public benefit, in particular, the activities, projects or services identified in the accounts.	See achievements and performance below.
Statement confirming whether the trustees have had regard to the guidance issued by the Charity Commission on public benefit	The Trustees have considered the Charity Commissioner's guidance on public benefit, including the guidance "public benefit running a charity" (PB2). The Trustees are of the view that, as all the activities of the Scout Council are directly or indirectly those of advancement of young people to give skills for life, they are therefore for the public benefit.

Achievements and Performance

Cheltenham District Scout Council Annual Report April 2020 – March 2021

DISTRICT COMMISSIONER REPORT

To say that this year is like no other is not only stating the obvious, but it's still continuing to be a learning curve as we all adjust to new ways. This, of course, has taken Leaders and Young People alike to places they weren't expecting to go. It has also been a year when the delivery of standards has been difficult, although we've still strived to do our best. This has meant that for many leaders who have become accustomed to only doing the essentials to deliver great events and activities have found the goalposts moved and it came as quite a shock to see the word 'Compliance' being enforced. I can only say thanks to everyone that Cheltenham District has taken this in their stride. This includes creating and sharing written versions of all risk assessments. We are now largely on top of all the Leaders' Mandatory Training. Thank you for showing that we are Trustworthy in all we do, as we deliver amazing programmes for the Young People, while having fun along the way and helping young people develop their skills for life. Due to the pandemic, many Leaders and Young People had to learn how to be creative in doing things differently.

Group Treasurers have faced their own challenges seeing incomes fall. They are now applying for grants and assistance to keep things afloat and running as smoothly as possible. The 2020 AGM saw some changes in membership of the District Executive with younger members coming on Board and functional sub-committees being created:

- The Finance Sub-committee, which supports our treasurer
- The Equipment and Property Sub-Committee, which looks after all district-owned assets
- The Awards Sub-Committee has also awarded over 50 Good Service Awards – Full list of awardees is at the end of the report.

Group Scout Leader Meetings continue to be regularly held, along with Senior Leadership Team Meetings, to ensure that events and support can be provided.

A member volunteered to take up the post of Well Being Champion, and she works alongside our team of Mental Health First Aiders. A group of highly valued members continue to hold regular Chinwag Meetings for the Leaders. This allows everyone to stay in touch.

We give a huge vote of thanks to our outgoing District Secretary who, after 32 years in the role, has passed on the baton. We wish her well. There have been a number of Leaders who, for personal reasons, have stepped down from their Assistant District Commissioner Roles, leaving vacancies for both



Cubs and Scouts. We thank the previous incumbents for their contributions and wish them well in their future activities! Continued effort has allowed Young People to transfer between Sections, and into Explorers and Network, smoothly. This still needs improvement. Thanks also go to our District Youth Commissioner, and Technology Support Wizard, who has excelled in both making links, and in helping to drag our systems into the 21st century. He has truly gone above and beyond, and his Commissioner's Commendation is well deserved! Thanks go to our previous Deputy District Commissioner/County Youth Commissioner, who transferred from the district in November. We wish him well on his journey of delivering lessons, as a secondary school teacher! At this point, I give thanks to all of you for your hard work. I pray for a bright future as we look to infinity and beyond!



Unfortunately, it's my duty to advise that two Scouters have passed away within the year. There's much to give thanks for in each of their lives, and our memories of them will live on.

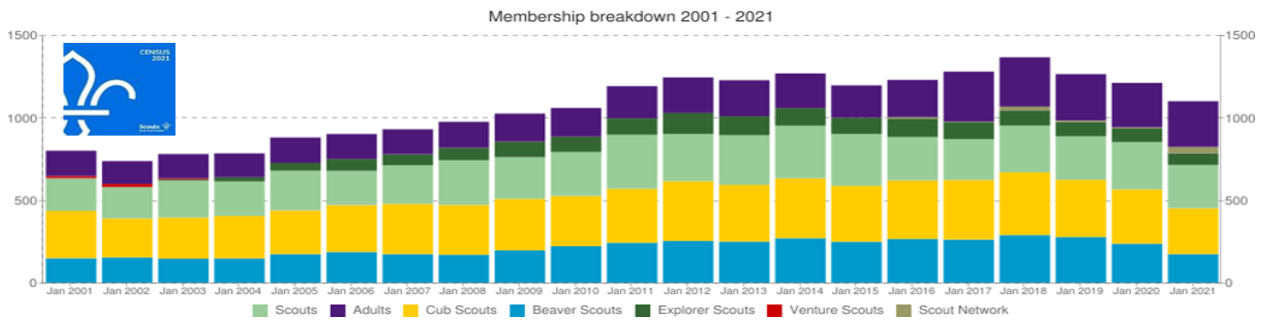
Hugh Stanford (1964-2020) (Wolf) was a Beaver Scout Leader at 1st Swindon Village, who sadly died in hospital on 8th May 2020 due to heart and kidney failure, as a result of a genetic condition, known as FH. Hugh has given 30 years of excellent service to Scouting as an adult leader. He joined 1st Swindon Village in 2008 as a leader with the Scout section, having previously worked with Venture Scouts in Hampshire during the 90's. At the end of 2015 when the Beaver leaders stood down - Hugh stepped forward to take over the Beaver colony. Hugh ran it successfully, until being taken into Gloucester Hospital. Hugh is survived by Claire and their two boys. Our thoughts are with them.



Colin Holman (1941-2021) was Group Secretary at 10th Cheltenham (All Saints). At Gloucester Royal Hospital, on New Year's Day, Colin lost his fight to a long-term illness. Colin first became a Cub Scout Leader at 24th Cheltenham (Leckhampton), in March 1965, and since 2005 has been Group Secretary at 10th Cheltenham (All Saints). He gave over 51 years' service to Scouting and the Young People; many of whom will have fond memories of him. Colin is survived by Margaret, who is still a member of the Group's Executive, as well as his daughters Elizabeth and Catherine, and two grandchildren: Edèle and Reuben. Our thoughts and prayers are also with them.



Census 2021 saw our numbers attending all sections drop, particularly in Beavers, which saw a dramatic 26.7% fall. However, our overall figure is down by less than 10% due to Leader numbers continuing to hold up, bucking the trend and increasing in adult volunteer numbers.



But there's still a lot more to do to ensure that we can rebuild and grow into the future. In the coming weeks and months, you'll be hearing a lot about how we can rebuild, and get back to a fully active programme, with the recent launch of the #GoodForYou Campaign looking to recruit around 5000 new volunteers nationally – see more at #GoodForYou | Scouts - Could this be YOU!

At the start of 2020, I took a break from Scouting, and I'd like to give a huge thank you to our County Commissioner, who stepped in to cover until I could continue. Since my return, time has flown by! In my absence, an opportunity to overhaul how we operate as a District was found, and a new Constitution was adopted at AGM 2020. This new document allows the District Executive to deal with "all things Governance" and the Operational Team now deal with high-quality programmes, activities and development, therefore helping Amazing Leaders and Parent Helpers to deliver a balanced programme and improving skills for life.

GOOD SERVICE AWARDS



First Name	Family Name	Group	Award for Merit Continued		
10 Year Long Service Award			Simon	Le Plain	7th Scouts
Claire	Frank	7th Beavers	Dominic	Lewen	24th
Ben	King	45th Cubs	Philip	Morris	7th Scouts
Rebecca	Lodwig		Richard	Nicholls	7th Cubs
Pete	Ryan	7th Cubs	Andrew	Parr	1st H Cubs
Lyn	Sansom	District (AAC)	Kay	Reeves	District
15 Year Long Service Award			Nikki	Roberts	49th Beavers
Rachel	Beaton	45th Beavers	Andrew	Safe	24th Cubs
20 Year Long Service Award			Emma	Saunders	7th Scouts
Stephen	Alder	7th Cubs	Marie	Slee	15th
Christopher	Frank	7th Scouts	Rachel	Smith	1st SV
Caro	McIntosh	District	Bar to the Award for Merit		
25 Year Long Service Award			Felicity	Cleaves	1st
Shane	Gough	1st SV Scouts	Cheri	Grinnell	15th Cubs
Award for Merit			Julien	Le Plain	7th
Stephen	Alder	7th Cubs	Caro	McIntosh	District
Helen	Arrenberg	15th Cubs	Derek	Newman	Wyell
Peter	Aylott	7th	Ian	Orr	7th Cubs
Rachel	Beaton	45th Beavers	Margaret	Perks	45th Beavers
Christopher	Biggadike	45th	Ann	Wade	1st H Cubs
Wendy	Binks	1st WH (GSL)	Shelley	Wright	BD's ESU
Sara	Boulton	(Beavers) 10th	Chief Scout's Commendation for Good Service		
Guy	Carter	45th	Sandy	Campbell	BD's ESU
Jonathon	Cotter	45th	Ant	Evans	45th Scouts
Trevor	Dumbleton	7th Scouts	Claire	Frank	7th Beavers
Christopher	Frank	7th Scouts	Ben	King	45th Cubs
Shane	Gough	1st SV Scouts	Rebecca	Lodwig	
Liam	Hamilton	Bedford	Richard	Piper	District
Stephen	Hanks	15th Scouts	Pete	Ryan	7th Cubs
John	Harrison	45th	Lyn	Sansom	District (AAC)
Terry	Hobbs	1st WH (Cubs)	Nige	Wachs	1st Hatherley
Lynda	Hodges	7th Beavers	Ash	Walter	1st SV (Scouts)
Phil	Horsfield	NN ESU	Steven	Youngs	1st Beavers
Kevin	Jones	45th Cubs	Silver Acorn		
Chris	Keith	1st Hatherley	Mikey	Jaynes	1st H Cubs
Chris	Langham	District			

DISTRICT YOUTH COMMISSIONER

It has been a strange year for Scouting in general. Indeed, we have spent most of it online utilising online tools such as Zoom to continue our regular meetings where possible. Despite this hardship, it has not been a barrier for groups to continue providing amazing Youth Shaped Scouting as they did the year before. For many leaders, the changes and difficulties have made it harder to even continue a programme that they once recognised.

There have also been some excellent achievements made by many Young People during this time. I have been pleased to see the continued success of top awards. This has been through all sections Beavers and Network members alike. The enthusiasm of many Young People continues to inspire leaders both on the ground and supporting from afar. Continuing the hard work of both leaders and Young People have led us to this point where we can celebrate success and hard work of many.

Looking ahead I am pleased to inform the district that the YouShape award will be launched on the 5th of October this year. This should help provide leaders with activities for the Young People to complete which also influence their programme, allow them to achieve awards and makes their time in Scouting the most enjoyable that it can be. As a County, we are looking to add to the resources which will be provided to you by the national team so that when the time comes for you to run the YouShape award, you feel prepared and empowered to deliver the award in the way leaders do best!

Ryan Hawkins

District Youth Commissioner

DISTRICT TRAINING REPORT

This year has certainly seen a different way of completing training

Having to learn how to use Skype and Zoom were the first hurdles to overcome and then to meet with leaders to complete validations became a challenge for some of the Training Advisers.

Then came the first of training modules online and certainly a different way altogether. The first modules of training such as Essential Information and Tools for the Role, usually completed in group sessions now were online and validated by achieving a certificate. The certificate then had to be copied to a Training Adviser to complete validation. Other modules followed this including Safety, and Safeguarding.

Gloucestershire County were lucky to have Mark Spiller, our County Commissioner, who then organised and held module training sessions by Zoom. Then followed First Aid, now split into two parts, Theory and Practical. To complete the theory leaders had to attend 3 separate zoom sessions. However many leaders soon

found this type of training to become a way of life and I am delighted with the amount of Woodbadges earned over this period in this District.

I am hoping that in the future we will resume face to face validations at District Headquarters as well as now being able to offer them by zoom or other online means.

In conclusion I would like to thank Tufty Perks, Paddy Langham and our new Training Adviser Jill Hetherington for all their hard work in validating and supporting leaders in Cheltenham. There is still a great need for more T/A's but working with the ones in the team is a pleasure.

Pat Hopes

District Training Manager – Cheltenham Scouts

PROPERTY AND EQUIPMENT SUB-COMMITTEE

Before September 2020's AGM, there was not a separate Property & Equipment committee, and such matters were handled within the main district executive committee. Therefore this report is divided into two halves.

April 2020 – September 2020

The arrival of COVID lockdown meant the HQ building was effectively 'mothballed' between April and July. In June it was agreed that the Motor Cycle School, an important community facility, which contributes to the upkeep costs of the hall, was restarted on a minimal, outdoors only basis. The HQ was stocked with appropriate hygiene equipment and some procedures reviewed.

The autumn sadly saw the departure of two longstanding contributors to the upkeep of the HQ building and district assets therein. The Exec Committee gave thanks to Peter Jones and Kay Reeves for all their work over the many years.

October 2020 – March 2021

With the establishment of a dedicated sub-committee for Property & Equipment matters, chaired by Will Jenkins, there was a flurry of activity to get back on top of various governance and health and safety matters before the return of face-to-face scouting. It was clear that many matters had fallen behind in recent years, and the arrival of a larger committee with renewed energy would enable this to be rectified.

On Property, the HQ building received a variety of small repairs and safety improvements, and a complete set of safety audits and risk assessments produced and actioned on the topics of Asbestos, Water, Electrics, Fire and Gas. Thanks to the support of local businesses such as Mainpoint Fire, Glacier Environmental, Smiths of Gloucester, and CF Roberts Local, a programme of improvements had begun. Lessons learned have been offered to the wider district, where the property is owned and maintained by Groups.

On equipment, the excellent inventories from Peter Jones were verified and entered into OSM for easier sharing with the district, and insurance renewed. Watercraft assets held by Explorer Units within the district were confirmed, and insurance also obtained. This highlighted the great value within the district assets and the need to ensure that they are put to good use once restrictions ease and groups and units in the district plan activities and events.

Governance of Explorer Scout Unit assets, which come under the District Executive Committee, has been slowly improved with the cooperation of the relevant Explorer Scout Leaders. Partnership agreements that relate to the use of local group equipment and buildings also identified and sought to be updated.

All in all, a busy time of 'behind the scenes' governance, intending to meet legal obligations around safe scout buildings, and secure the financial investment of equipment which is considerable across the district.

BEAVER SCOUTS

During 2020-2021, Beavers were faced with several challenges, as a result of the Pandemic. However, Beavers still found time to have fun and try new activities! Some groups met wholly online, while some managed to mix both online and face-to-face. Sadly, some were unable to meet online, but that didn't stop them!



Online, using Zoom, activities included building towers from spaghetti and marshmallows, making armpit fudge, making your own playdough. Other online activities included Kahoot! quizzes, fitness and fruit, water days, yoga sessions, learning sign language, and home cooking.

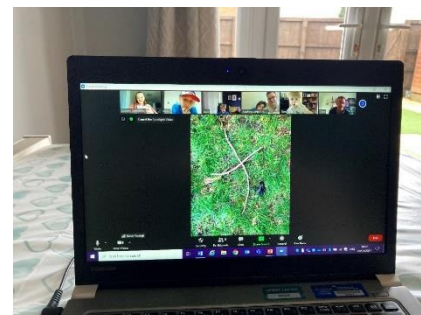
When Beaver groups could meet face-to-face, they were able to complete fun activities such as scavenger hunts, wide games, campfires and visits to Cranham

For the Beavers that couldn't join us on Zoom, 2 groups delivered activity packs for them to complete, including Gingerbread House Kits, enabling them to earn badges from home and do other fun activities. One Beaver from Warden Hill excelled himself with 62.7 miles on the Virtual Cotswold Challenge Gold Section, normally reserved for older members of scouting.



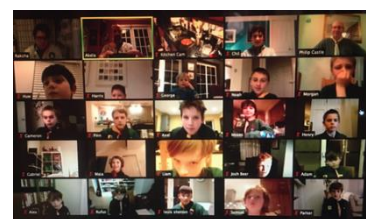
Badges worked on include:

- Cook (Activity)
- Explore (Activity)
- Nature (Activity)
- Scientist (Activity)
- IT Skills (Staged)



CUB SCOUTS

Hi and welcome to the annual Cub report. It's been an interesting and varied year with Cubs taking part in various activities both online and offline. These included camps at home, star gazing, bird identification, cooking, making and sleeping in dens, quizzes, at-home treasure hunts, online escape rooms, making bughouses, recycling, story-telling, mental health evenings, Lego Code-Breaking challenges, virtual penny hike, science experiments and crafts.



When we could meet face-to-face, we managed to complete more exciting activities like wide games, making s'mores and martial arts. Cranham added activities such as air rifle shooting, grass sledging, fire lighting, wall traversing and eating dried bugs (eww!)



There were some national events that Cubs took part in from home, including the Apart but Together Camp, Clapping for Carers, 75th VE Day Celebrations and Camps.

While stuck at home, the cubs managed to earn badges including the chef (activity), home safety (activity), great indoors badge (staged), digital citizen badge (staged), local knowledge badge (activity), communicator badge (activity), athletics badge (staged), hobbies badge (activity)

Some quotes from our very grateful parents:

“The leaders have been fantastic in really challenging circumstances and the kids have enjoyed a whole range of practical activities, challenges, quizzes and discussion.”

“We are really grateful for the efforts made by the leaders and helpers, especially since the use of Zoom has been a steep learning curve for some.”

“To all Cub Leaders and Unit Helpers that are keeping our young people entertained and engaged with Scouting during these difficult times, a huge thank you once again from the District. Without you this would not happen.”



SCOUTS

News from Scouts! Well, how do I start? Not your normal year, but Keep Calm and Carry On Scouts. It’s been rainy, windy, and a bit buggy at times, what with the Pandemic and the Cyber Attacks. Phew, when will it end?

While you’ve all been working from ‘ome, we’ve been “Scouting from ‘ome ©” through a mix of mediums, we’ve been doing activities like a Good Friday Easter Egg Hunt, Monopoly Run, Live Campfire, worm charming, block programming in Scratch, mayday flower crowns on pets, learning basic Russian, studying meteorology, following the launch of SpaceX, making rain gauges, exploring Hogwarts, hosting weekend-long virtual camps for Cubs and Beavers

We managed to do a couple of events with nationwide Scouts as well. These included WinterCamp 2021, We Will Survive Camp and the Great Indoors Camp.

We’ve also earned a load of badges, each member in one group managed to score 12 on average.



These badges include:

Electronics badge (activity)

Hikes Away (Staged)

Nights Away (Staged)

Chef badge (Activity)

- Astronautics (Activity)
- Digital Maker (Staged)
- Camper (Activity)
- Model Maker (Activity)
- The Great Indoors Badge (Staged)
- Meteorologist (Activity)
- Scouts International Badge (Activity)

EXPLORER SCOUTS

It's been a long and tiring year for the Explorer Units. With the outbreak of the virus, none of our units were initially meeting face-to-face. Those that were meeting online used Zoom to enable them to flourish. We've been able to explore many different experiences over Zoom, for example a discussion session around Drugs and Alcohol, an interactive meeting with various Cats and Service Dogs, a discussion around how to escape from a Desert Island and fly to the moon, an online first-aid session and several cooking sessions including how to cook "Rumbledethumps" and French toast rollups.



When there were periods where face-to-face meetings were allowed, some units were getting together both outdoors and indoors (where permitted). During this time, one unit toasted marshmallows. This resulted in a kind-hearted member of the public thinking the building was being set alight, contacting the fire brigade. The crew were disappointed that no marshmallows were left, and would like to know when they can join us for the next marshmallow session.

On Remembrance Sunday, one of the Explorer leaders laid the District Wreath at the Cheltenham War Memorial and a unit created a memorial piece around their HQ. Also, members of Explorers were involved in the county remembrance event online, reading the Exhortation.



Some units have almost doubled their numbers during the pandemic, and they've managed to achieve some outstanding awards and merits during the lockdowns. This included a D of E Gold Expedition on water which had a mix of Explorers and Network members. More info in the Network section.

Awards and badges include a Young Leader award, Emergency Aid (Staged) and D of E Silver awards.

CHELTENHAM NETWORK

Like many of the other groups, the “nodes” of Network have been continuing to explore scouting during the pandemic, where permitted.

One particular example of this includes a Gold DofE Kayaking Expedition in October 2020, which was attended by 2 Network Members and 5 Explorers. The team were faced with many challenges as a result of the pandemic, but also challenges presented by personal circumstances. The team wouldn't let these challenges stop them, overcoming them and allowing the 2 Network Members to be awarded their DofE Gold awards, along with their Bus Fare Home.



This example is a model of the camaraderie and teamwork that Scouting promotes – everyone working together, helping each other along, and reaching goals as a team, or a family.

While Network members weren't on expeditions, they were taking part in the plethora of events taking place, both inside and outside of the district, where permitted.

Quotes from District Members

“The completion of this Gold Duke of Edinburgh award would not have been successful without the support of Leaders at [The Unit] and the leaders within District, County and National teams.”

“ All of this proves that Scouting can be inclusive and any ‘problems’ worked around with an openness and fairness that means that scouts of any age can take part in the programme and achieve their dreams.”



OUTSIDE DISTRICT ACTIVITIES – Mainly Done at home or with family members

Big Stay-at-Home Camp – Beavers and Various Section Leaders

Virtual Cotswold Marathon (GL) – All sections took part with Parents and Leaders



We Will Survive Camp (GL) – Beavers, Cubs, Scouts and Leaders
 ShireHike (H&W, GL) – All sections involved in scouting
 Virtual St George’s Day Renewal of Promises (County) – All Sections
 WinterCamp 2021 (Worldwide) – All sections
 Carry on Scouting Camp (Forest of Dean) – All sections
 Walk to the Moon (National Fundraiser) – All sections
 Apart but Together Camp (National) – All sections
 Clap for Carers (UK National) – Anyone
 Star Count (National) – All sections
 S&E at Home (National) – All sections



Financial Review

The financial statements represent the accounts of the district central funds and those of Explorer Scout Units as required by POR and the Charities Commission.

Central funds

This year the accounts have been very quiet, due to the Covid-19 situation in the UK, and the lack of face-to-face scouting. The usual payments of Electricity, Water and Wi-Fi have continued under their Direct Debit as normal.

An unexpected but gratefully received sum of just short of £20,000 came into the District to cover the loss of income from the use of the district headquarters during the Covid-19 lockdowns. These Covid-19 funds have been set aside for building maintenance, refurbishment and repairs on the District Headquarters building. The lease of the building with St Marks and Hesters Way Community Centre is due to be renewed in 2022 and some of this money may be used to facilitate the renewal of the lease.

The buildings and equipment team arranged for Electrical, Asbestos, Fire and Legionella tests costing around £500 on the St Marks HQ Building during 2021. They also took the opportunity during the break from face to face scouting to review the building and equipment and carry out any urgent maintenance.

Online Scout Manager (OSM) was renewed again in 2020-2021 for all Groups in the District to enable their continued access for all Sections, meaning previously recorded records for the Young People in a GDPR compliant way has continued.

The Scout Shop has continued to operate during the year. Sales through the shop were higher than expected throughout the Covid-19 issue, but this is still not a significant income for the District. The stockholding has been reduced but is still significant compared to sales and, having taken account of potentially redundant and/or slow-moving stock, a further provision has been made. The finance committee will be reviewing the operation of the shop during the coming year.

Explorer Scout Units

The finances of the Explorer Scout Units continue to be included in the financial statements except for No Name which is reported through the accounts of Charlton Kings Scout Group, a separately registered charity, under a partnership agreement. The surpluses/deficits of these Units generally represent the timing of their weekly activities compared to subscriptions.

During the inclusion of the financial affairs of Explorer Scout Units last year, a large amount of equipment including watercraft was identified. In the light of this, the District reviewed its

insurance policies and took additional insurance to cover this additional equipment to protect the District's financial position should any of the equipment be stolen or destroyed.

New initiatives

During 2020/2021 the District Executive Committee established two additional subcommittees, to look after financial management and property management with specialised volunteers reporting to the District Executive. The finance team were brought together under a uniformed leader as the chair working closely with the treasurer to deal with all things finance.

The finance team proposed and the District Executive approved the use OSM for payments to District for planned events including district camps, weekend events and badge courses. The implementation of this is currently progressing towards a full set of user instructions.

The future

We will monitor income and expenditure during the coming year to see if there will be a need to change the district membership subscription. We are mindful of the pressures on all the sections and plan to support them where we can.

It is hoped that overheads can be reduced by the introduction of electronic filing and bills management, as well as taking the external bills for electricity, telephone, and internet through the processes of competitive research online annually.

Pat Hopes
Treasurer

Structure, Governance and Management

Description of charity's trusts:	Cheltenham District Scout Council is a Registered Charity, Charity Number 1021577
Type of governing document	<p>The Scout Association exists by authority of a Royal Charter, granted by King George V in 1912 and supplemented by further Charters granted by King George VI and Queen Elizabeth II.</p> <p>These Charters give authority to the Bye Laws of the Association, which are approved by Her Majesty's Privy Council.</p> <p>The Bye Laws, in turn, authorise the making of rules for the regulation of the Association's affairs, and thereby give authority for the Rules printed in Policy, Organisation and Rules.</p>
How is the charity constituted?	The Cheltenham District Scout Council works within the Policy, Organisation and Rules of the Scout Association with local application set out in its own constitution, the latest dated September 2020.
Trustee selection methods including details of any constitutional provisions e.g. election to post or name of any person or body entitled to appoint one or more trustees	<p>The District Executive Committee exists to support the District Commissioner in meeting the responsibilities of the appointment and to provide support for Scout Groups, Explorer Scout Units and any District Scout Network in the District. Members of the Executive Committee must act collectively as Charity trustees of the Scout District, and in the best interests of its members to:</p> <ul style="list-style-type: none"> • Comply with the Policy, Organisation and Rules of The Scout Association • Protect and maintain any property and equipment owned by and/or used by the District • Manage the District finances. • Provide insurance for people, property and equipment. • Provide sufficient resources for Scouting to operate. This includes, but is not limited to, supporting recruitment, other adult support, and fundraising activities. • Promote and support the development of Scouting in the local area. • Manage and implement the Safety Policy locally • Ensure that a positive image of Scouting exists in the local community. • Appoint and manage the operation of any sub-Committees, including appointing Chairmen to lead the sub-Committees • Ensure that Young People are meaningfully involved in decision making at all levels within the District • The opening, closure and amalgamation of Groups, Explorer Scout Units, Scout Network and Scout Active Support Units in the District as necessary. • Appoint and manage the operation of an Appointments Advisory Committee, including appointing an Appointments Committee Chairman to lead it. • Supervising the administration of Groups, particularly in relation to finance and the trusteeship of property. <p>The District Executive Committee consists of:</p> <p>Ex officio members</p> <ul style="list-style-type: none"> • The District Commissioner • The Deputy District Commissioner • The District Youth Commissioner • The District Chairman • The District Secretary • The District Treasurer • The District Explorer Scout Commissioner • The District Scout Network Commissioner

	<ul style="list-style-type: none"> • The District Scout Active Support Manager <p>Nominated members Persons nominated by the District Commissioner and whose membership of the Committee is confirmed at the District Annual General Meeting. They need not be members of the District Scout Council and their number must not exceed that of the elected members.</p> <p>Elected members Persons elected at the District Annual General Meeting to serve for a period of one year. Each may stand for re-election but may not serve for more than six successive years. These should normally be four in number.</p> <p>Co-opted members Persons co-opted annually by the District Executive Committee. The number of co-opted members must not exceed the number of members who may be elected. Co-opted members shall serve until the Annual General Meeting next after their co-option. A co-opted member shall be eligible for re-co-option in one following year only.</p> <p>Members of the District Executive Committee are the Charity Trustees of the Scout District, which is an educational charity. They must carry out their responsibilities to the Charity Commission as required. Only persons aged 18 and over may be full voting members of the District Executive Committee because of their status as charity trustees.</p>
--	---

Names of the charity trustees who manage the charity

Trustee name	Office (if any)	Dates acted if not for the whole year
Declan Austin	Exec member	Appointed 24 September 2020
Wendy Binks	Exec member	Appointed 24 September 2020
James (Jamie) Davies	Exec member	Appointed 24 September 2020
Matthew (Matt) Evans	District Scout Network Commissioner	Resigned 12 March 2021
Elaine Green	Shop Manager	Resigned 8 September 2020
Liam Hamilton	Exec member	Resigned 8 September 2020
Ann BD Haseler	Secretary	Resigned 8 September 2020
Sarah A Hick	Chairman	
Neil A Hatton	Exec member / DESC	
Patricia (Pat) A Hopes	Treasurer	
Ryan Hawkins	District Youth Commissioner	
William (Will) D Jenkins	Exec member / Chair Property and equipment committee	Appointed 24 September 2020
Callum Johnston	Deputy District Commissioner	Resigned 6 November 2020
David (Paddy) J Langham	President	
Caroline (Caro) S McIntosh	Exec member	
Bev Piper	Secretary	Appointed 8 September 2020
Richard Piper	Active Support Manager / Chair Finance committee	Appointed 24 September 2020
Kathrine (Kay) M Reeves	Exec member	Resigned 8 September 2020
Nikki Roberts	ADC Activities	Resigned 8 September 2020
Timothy (Tim) J Simpson	Exec member	Resigned 8 September 2020
Godfrey Tarling	District Commissioner	

Statement of trustee's responsibilities in respect of the trustee's annual report and accounts

The Trustees are responsible for preparing the Report of the Trustees and the financial statements in accordance with applicable law and regulations.

Charity law requires the Trustees to prepare financial statements for each financial year. Under that law, the trustees have elected to prepare the financial statements in accordance with the United Kingdom Generally Accepted Accounting Practice (United Kingdom Accounting Standards and applicable law). Under charity law, the Trustees must not approve the financial statements unless they are satisfied that they give a true and fair view of the state of affairs of the charitable trust and of the incoming resources and application of resources, including the income and expenditure, of the trust for that period. In preparing these financial statements, the Trustees confirm that:

- selects suitable accounting policies and then apply them consistently
- makes judgments and estimates that are reasonable and prudent
- states whether the recommendations of the SORP FRS 102 have been followed, subject to any material departures disclosed and explained in the financial statements
- states whether the financial statements comply with the trust deed, subject to any material departures disclosed and explained in the financial statements
- prepares the financial statements on the going concern basis unless it is inappropriate to presume that the charity will continue its activities.

The Trustees are responsible for keeping adequate accounting records that are sufficient to show and explain the charitable trust's transactions and disclose with reasonable accuracy at any time the financial position of the trust and enable them to ensure that the financial statements comply with section 132(1) of the Charities Act 2011. They are also responsible for safeguarding the assets of the charitable trust and hence for taking reasonable steps for the prevention and detection of fraud and other irregularities.

The Trustees are responsible for the maintenance and integrity of the corporate and financial information included on the charitable trust's website.

The Trustees have taken all the steps that they ought to have taken as Trustees in order to make themselves aware of any relevant audit information and to establish that the charitable trust's independent examiner is aware of that information.

Declarations

The trustees declare that they have approved the trustees' report above.

Signed on behalf of the charity's trustees on 14 September 2021



Sarah Hick
District Chair



Godfrey Tarling
District Commissioner

Independent Examiner's Report

CHELTENHAM DISTRICT SCOUT COUNCIL for the year ended 31 March 2021

I report on the accounts of Cheltenham District Scout Council for the year ended 31 March 2021, which are set out on pages 18 to 26.

This report is made solely to the charity's trustees, as a body, in accordance with the regulations made under section 154 of the Charities Act 2011. My work has been undertaken so that I might state to the charity's trustees those matters I am required to state to them in an independent examiner's report and for no other purpose. To the fullest extent permitted by law, I do not accept or assume responsibility to anyone other than the charitable trust and the charity's trustees, as a body, for my work, for this report, or for the opinions I have formed.

Respective responsibilities of trustees and examiner

The trustees are responsible for the preparation of the accounts. The charity's trustees consider that an audit is not required for this year (under section 144(2) of the Charities Act 2011 (the 2011 Act)) and that an independent examination is needed. I am qualified to undertake the examination by being a qualified member of institute of chartered accountants in England and Wales.

Having satisfied myself that the charitable trust is eligible for independent examination, it is my responsibility to:

- examine the accounts under section 145(1)(a) of the 2011 Act;
- to follow the procedures laid down the general directions given by the Charity Commission under section 145(5)(b) of the 2011 Act; and
- to state whether particular matters have come to my attention.

Basis of independent examiner's statement

My examination was carried out in accordance with the general directions given by the Charity Commission. An examination includes a review of the accounting records kept by the charitable trust and a comparison of the accounts presented with those records. It also includes consideration of any unusual items or disclosures in the accounts and seeks explanations from you as trustees concerning any such matters. The procedures undertaken do not provide all the evidence that would be required in an audit, and consequently no opinion is given as to whether the accounts present a 'true and fair' view and the report is limited to those matters set out in the statement below.

Independent examiner's statement

In connection with my examination, no matter has come to my attention:

- I. which gives me reasonable cause to believe that in any material respect, the requirements:
 - to keep accounting records in accordance with section 130 of the Charities Act; and
 - to prepare accounts which accord with the accounting records, comply with the accounting requirements of the Charities Act and with the methods and principles of the statement of recommended practice: accounting and reporting by charities;have not been met; or
- II. to which, in my opinion, attention should be drawn in order to enable a proper understanding of the accounts to be reached.



Ben Hall FCA
millhall consultants limited
Chartered Accountants
Mitcheldean

14 September 2021

Statement of financial activities

Recommended categories by activity	Notes	2021 Unrestricted funds £	2021 Restricted funds £	2021 Total funds £	2020 Total funds £
Incoming resources					
Income from:					
Membership fees	3	4,388		4,388	4,460
Donations and grants	3	6	200	206	225
Covid grant	3	19,907		19,907	
Charitable activities:					
Explorer Scout Units	4	10,175		10,175	24,433
Youth programme and activities	4	98		98	938
Adult support and training	4	0		0	0
Trading activities	4	529		529	8,696
Investment income	3	79		79	34
Rental income	3	1,602		1,602	1,920
Total		36,784	200	36,984	40,706
Resources expended					
Expenditure on:					
Trading activities	4	1,337	0	1,337	8,882
Charitable activities:					
Explorer Scout Units	4	12,554	0	12,554	26,039
Youth programme and activities	4	182	0	182	1,657
Adult support and training	4	0	0	0	1,021
Donations made	5	20	0	20	19
Support and services to the movement	5	1,152	0	1,152	558
District HQ expenses	5	7,123	0	7,123	6,147
Governance costs	5	529	0	529	365
Total		22,897	0	22,897	44,688
Net income/(expenditure) and net movement in funds					
		13,887	200	14,087	(3,982)
Reconciliation of funds:					
		84,482	500	84,982	88,964
Total funds carried forward		98,369	700	99,069	84,982

Signed on behalf of all the trustees on 14 September 2021

Balance sheet

	Notes	2021 Unrestricted funds	2021 Restricted income funds	2021 Total funds	2020 Unrestricted funds	2020 Restricted income funds	2020 Total funds
		£	£	£	£	£	£
Fixed assets							
Tangible assets	7	16,538	0	16,538	23,102	0	23,102
Total fixed assets		16,538	0	16,538	23,102	0	23,102
Current assets							
Stocks	8	5,500	0	5,500	6,437	0	6,437
Debtors	9	3,104	0	3,104	1,558	0	1,558
Cash at bank and in hand	10	107,249	700	107,949	86,850	500	87,350
Total current assets		115,853	700	116,553	94,845	500	95,345
Creditors							
Amounts falling due within one year	11	34,022	0	34,022	33,465	0	33,465
Net current assets/(liabilities)		81,831	700	82,531	61,380	500	61,880
Total net assets or liabilities		98,369	700	99,069	84,482	500	84,982
Funds of the Charity							
Restricted income funds	12		700	700		500	500
Designated funds		80,699		80,699	63,170		63,170
General funds		17,670		17,670	21,312		21,312
Total funds		98,369	700	99,069	84,482	500	84,982

Signed on behalf of all the trustees on 14 September 2021

Sarah Hick
District Chairman



Godfrey Tarling
District Commissioner



Notes to the accounts

Note 1 Basis of preparation

1.1 Basis of accounting

These accounts have been prepared under the historical cost convention with items recognised at cost or transaction value unless otherwise stated in the relevant note(s) to these accounts.

The accounts have been prepared in accordance with:

- the Statement of Recommended Practice: Accounting and Reporting by Charities preparing their accounts in accordance with the Financial Reporting Standard applicable in the UK and Republic of Ireland (FRS 102) issued on 16 July 2014
- and with the Charities Act 2011.

The charity constitutes a public benefit entity as defined by FRS 102.

Note 2 Accounting policies

Signed on behalf of all the trustees on 14 September 2021

Recognition of income These are included in the Statement of Financial Activities (SoFA) when:

District

- the charity becomes entitled to the resources;
- it is more likely than not that the trustees will receive the resources; and
- the monetary value can be measured with sufficient reliability.

Offsetting There has been no offsetting of assets and liabilities, or income and expenses, unless required or permitted by the FRS 102 SORP or FRS 102.

Grants and donations Grants and donations are only included in the SoFA when the general income recognition criteria are met (5.10 to 5.12 FRS102 SORP).

In the case of performance related grants, income must only be recognised to the extent that the charity has provided the specified goods or services as entitlement to the grant only occurs when the performance related conditions are met (5.16 FRS 102 SORP).

Contractual income and Donated goods This is only included in the SoFA once the charity has provided the related goods or services or met the performance related conditions.

Support costs Donated goods are measured at fair value (the amount for which the asset could be exchanged) unless impractical to do so.

Volunteer help The charity has incurred expenditure on support costs.

Income from interest The value of any voluntary help received is not included in the accounts but is described in the trustees' annual report.

Income from membership subscriptions This is included in the accounts when receipt is probable and the amount receivable can be measured reliably.

Membership subscriptions are recognised in the year to which they relate.

Membership subscriptions which gives a member the right to buy services or other benefits are recognised as income earned from the provision of goods and services as income from charitable activities.

EXPENDITURE AND LIABILITIES

Liability recognition Liabilities are recognised where it is more likely than not that there is a legal or constructive obligation committing the charity to pay out resources and the amount of the obligation can be measured with reasonable certainty.

Governance and support costs Support costs have been allocated between governance costs and other support. Governance costs comprise all costs involving public accountability of the charity and its compliance with regulation and good practice.

Creditors The charity has creditors which are measured at settlement amounts less any trade discounts.

Provisions for liabilities A liability is measured on recognition at its historical cost and then subsequently measured at the best estimate of the amount required to settle the obligation at the reporting date.

Basic financial instruments The charity accounts for basic financial instruments on initial recognition as per paragraph 11.7 FRS102 SORP. Subsequent measurement is as per paragraphs 11.17 to 11.19. FRS102 SORP.

ASSETS

Tangible fixed assets for use by charity These are capitalised if they can be used for more than one year.

They are valued at cost.

The depreciation rates and methods used are disclosed in note 7.

Stocks and work in progress Stocks held for sale as part of non-charitable trade are measured at the lower or cost or net realisable value.

Debtors Debtors (including trade debtors and loans receivable) are measured on initial recognition at settlement amount after any trade discounts or amount advanced by the charity. Subsequently, they are measured at the cash or other consideration expected to be received.

Current asset investments The charity has investments which it holds for resale or pending their sale and cash and cash equivalents with a maturity date less than one year. These include cash on deposit and cash equivalents with a maturity date of less than one year held for investment purposes rather than to meet short term cash commitments as they fall due.

Notes to the accounts (cont)

Note 3 Analysis of income

		2021 Unrestricted funds	2021 Restricted funds	2021 Total funds	2020 Unrestricted funds
Analysis		£			£
Voluntary income:	Donations and grants	6	200	206	225
	Total	6	200	206	225
Membership income:	Membership subscriptions				
	Group	44,973	0	44,973	45,223
	County	(41,052)	0	(41,052)	(41,268)
	County refund	467	0	467	505
Total	4,388	0	4,388	4,460	
Income from investments:	Interest income	79	0	79	34
	Total	79	79	79	34
Separate material item of income:	Rental income	1,602	0	1,602	1,920
	Covid grants	19,907	0	19,907	0
	Total	21,509	0	21,509	1,920

Note 4 Analysis of activities and programmes

		2021 surplus/ (deficit)	2021 Income	2021 Expenditure	2020 surplus/ (deficit)	2020 Income	2020 Expenditure
Analysis							
Explorer Scout Units:	ESU Octopus*	2,113	2,715	602	(2,307)	5,487	7,794
	ESU Shooting Group*	(539)	60	599	(621)	314	935
	ESU Black Sheep	267	2,450	2,183	(633)	1,827	2,460
	ESU Devil's Chimney	100	100	0	(241)	400	641
	ESU Adders Tongue	0	0	0	(596)	2,403	2,999
	ESU Bob's Dinosaurs	(4,320)	4,850	9,170	2,792	14,002	11,210
Total	(2,379)	10,175	12,554	(1,606)	24,433	26,039	
Youth programme and activities:	Explorer Scouts general	(71)	0	71	(124)	457	581
	Three Counties Show	0	0	0	15	375	360
	Cooking competition	0	0	0	(10)	80	90
	St Georges Day Parade	0	0	0	(598)	0	598
	Fete and funday (prior years)	98	98	0	0	0	0
	Whaddon support	(111)	0	111	0	0	0
	District activities	0	0	0	(2)	26	28
Total	(84)	98	182	(719)	938	1,657	
Adult support and training:	Training	0	0	0	(1,021)	0	1,021
	Total	0	0	0	(1,021)	0	1,021
Trading activities:	Scout Shop	(808)	529	1,337	(186)	8,696	8,882
	Total	(808)	529	1,337	(186)	8,696	8,882

* Membership of a full Scout Explorer Unit or Scout Unit is required

Notes to the accounts (cont)

Note 5 Analysis of expenditure

	2021 Unrestricted funds	2020 Unrestricted funds
	£	£
Analysis of donations made		
Poppy Wreath Appeal	20	19
Total	20	19

Support and services to the movement

Printing, postage and stationary	196	177
Other expenses	729	31
Depreciation district equipment	227	350
Total	1,152	558

District HQ expenses

Maintenance	1,876	504
Insurance	1,498	1,389
Electricity	455	686
Water rates	299	328
Council tax	0	232
Depreciation HQ fixtures and fittings	175	195
MP Licence	250	243
WiFi	403	403
Online Scout Manager	2,167	2,167
Total	7,123	6,147

Governance expenses

Independent examiner fee	504	300
AGM and other governance expenses	25	65
Signed on behalf of all the trustees on 14 September 2021	529	365

Note 6 Details of certain items of expenditure

Fees for examination of the accounts

	2021 Unrestricted funds	2020 Unrestricted funds
	£	£
Independent examiner's fees	384	300
Current year	120	-
Prior year		

Notes to the accounts (cont)

Note 7 Tangible fixed assets

Cost or valuation

	Leasehold land & buildings	HQ fixtures and fittings	District equipment	ESU Bob's Dinosaurs equipment	ESU Shooting Group equipment	Total
	£	£	£	£	£	£
At 31 March 2020	0	5,120	9,546	34,923	3,250	52,839
Adjustment to prior year	0	0	(764)	(3,382)	0	(4,146)
At 31 March 2021	0	5,120	8,782	31,541	3,250	48,693

Depreciation

Basis	Reducing balance	Reducing balance	Reducing balance	Straight line
Rate	10%	15%	15%	10-20%

At 31 March 2020	0	3,366	7,572	17,002	1,797	29,737
Depreciation	0	175	227	2,181	599	3,182
On disposals	-	-	(764)	-	-	(764)
At 31 March 2021	0	3,541	7,035	19,183	2,396	32,155

Net book value

At 31 March 2020	0	1,754	1,974	17,921	1,453	23,102
At 31 March 2021	0	1,579	1,747	12,358	854	16,538

District Chairman

The building was commissioned by 16th Cheltenham Scout Group and passed to the Cheltenham Scout Council on the closure of that Group in 2004/05. The land is leased from the St Marks and Hesters Way Community Centre and the lease runs consecutively with a lease the Community Centre have granted to them by Cheltenham Council.

It has been decided not to incur professional fees to ascertain the leasehold market value. The current insurance value is £203,429 (2018: £195,605)

Notes to the accounts (cont)

Note 8 Shop

	2021 Unrestricted funds £	2020 Unrestricted funds £
Sales	529	8,696
Cost of sales		
Opening shop stock	6,437	6,704
Purchases	99	8,177
Closing shop stock	(5,500)	(6,437)
	1,036	8,444
Gross profit	(507)	252
Other shop costs	301	438
Net profit/(loss) from shop	(808)	(186)

Note 9 Debtors and prepayments

Signed on behalf of all the trustees on 14 September 2021

	2021 Unrestricted funds £	2020 Unrestricted funds £
Other debtors and prepayments	3,104	1,558
District Chairman	3,104	1,558

Note 10 Cash at bank and in hand

	2021 Unrestricted funds £	2020 Unrestricted funds £
Current account	75,221	56,239
Savings accounts	15,635	15,582
Fete and Funday account	456	356
Active Support account	0	364
Cash on hand - Scout shop	25	25
Explorer Shooting Group account	1,983	1,923
ESU Black Sheep	2,127	1,861
ESU Devil's Chimney	1,210	1,110
ESU Adders Tongue	0	(158)
ESU Bob's Dinosaurs	11,292	10,048
Total	107,949	87,350

Note 11 Creditors and accruals

Amounts falling due within one year

Analysis of creditors and deferred income

	2021 Unrestricted funds £	2020 Unrestricted funds £
Membership subscriptions in advance - Groups	32,154	31,066
Accruals	952	1,344
Course fees in advance - ESU Octopus	916	1,055
Total	34,022	33,465

Notes to the accounts (cont)

Note 12 Charity funds

Details of material funds held and movements during the CURRENT reporting period

Fund names	Purpose and Restrictions	Fund balances 1 April 2020 £	Surplus/ (deficit) £	Transfers £	Fund balances 31 March 2021 £
General funds:					
General fund		25,656	16,265	(19,907)	22,014
ESU general		(4,344)	0	0	(4,344)
ESU Black Sheep (legacy)		0		0	0
		21,312	16,265	(19,907)	17,670
Designated funds:					
Renovation fund	Property renovation	10,609	0	19,907	30,516
Active support fund	Active support and fellowship	2,091	0	0	2,091
Fete and fun day	Fete and fund day	1,709		0	1,709
Active support	Active support and fellowship	364	0	0	364
ESU Octopus	Scuba diving courses	(1,389)	2,113	0	724
ESU Shooting Group	ESU	3,375	(539)	0	2,836
ESU Black Sheep	ESU	1,861	267	0	2,128
ESU Devil's Chimney	ESU	1,110	100	0	1,210
ESU Adders Tongue	ESU	(158)	0	0	(158)
ESU Bob's Dinosaurs	ESU	27,969	(4,319)	0	23,650
Sun Run/Malvern Challenge	district activities	15,629	0	0	15,629
		63,170	(2,378)	19,907	80,699
Restricted funds:					
ESU training	Provision of training course for ESU	500	0	0	500
Mental health training		0	200	0	200
		500	200	0	700
Total Funds		84,982	14,087	0	99,069

Notes to the accounts (cont)

Note 12 Charity funds

Details of material funds held and movements during the PREVIOUS reporting period

Fund names	Purpose and Restrictions	Fund balances 1 April 2019 £	Surplus/ (deficit) £	Transfers £	Fund balances 31 March 2020 £
General funds:					
General fund		27,908	(2,252)	0	25,656
ESU general		(4,220)	(124)	0	(4,344)
		23,688	(2,376)	0	21,312
Designated funds:					
Renovation fund	Property renovation	10,609	0	0	10,609
Active support fund	Active support and fellowship	2,091	0	0	2,091
Fete and fun day	Fete and fun day	1,709	0	0	1,709
Active support	Active support and fellowship	364	0	0	364
ESU Octopus	Scuba diving courses	918	(2,307)	0	(1,389)
ESU Shooting Group	ESU	3,996	(621)	0	3,375
ESU Black Sheep	ESU	2,494	(633)	0	1,861
ESU Devil's Chimney	ESU	1,351	(241)	0	1,110
ESU Adders Tongue	ESU	438	(596)	0	(158)
ESU Bob's Dinosaurs	ESU	25,177	2,792	0	27,969
Sun Run/Malvern Challenge	district activities	15,629	0	0	15,629
		64,776	(1,606)	0	63,170
Restricted funds:					
ESU training	Provision of training course for ESU	500	0	0	500
		500	0	0	500
Total Funds		88,964	(3,982)	0	84,982