

Rockinghorse Children's Charity

Annual Report and Financial Statements

2021/22





Rockinghorse Children's Charity

Annual Report of the Trustees - Contents

• Where we work	6
• This year's highlights	8
• Message from the CEO	10
• Our impact	12
• How we raised our funds	14
• Where we spent them	15
• Who we support	16
• Our supporters	20
• Activities	22
• Equipment	24
• People	26
• Spaces and research	28
• Toys and fun	30
• The future	32
• Trustees Annual Report	36
• Report of the Independent Auditor	42

Financial Statements - Contents

• Statement of financial activities	49
• Balance sheet	50
• Statement of cash flows	51
• Notes to the financial statements	52
• Administrative details	63

Our vision is a world where children are healthy and happy



Our mission

We do this by funding projects, programmes and people that enhance the care and support given by our incredible colleagues in the NHS.

We work in partnership with the UHSussex NHS Trust and other local charities to fund projects, programmes and people as well as helping young patients and their families.

We fund cutting edge equipment and facilities, support medical staff, innovative research and pioneering treatments, that make a difference to patients and their loved ones.

We support developments that go above and beyond what the NHS can provide at present.

Where we work

Whilst Rockinghorse is the official fundraising arm of the Royal Alexandra Children's Hospital in Brighton, we also support a range of healthcare and project settings throughout Sussex.

Along with supporting the Trevor Mann Baby Unit (TMBU) in Brighton and the Special Care Baby Unit (SCBU) in the Princess Royal Hospital in Haywards Heath, we also support paediatric wards, specialist neonatal units, respite centres and children's services across the whole county of Sussex.

- 1 Royal Alexandra Children's Hospital, Brighton
- 2 Trevor Mann Baby Unit, Brighton
- 3 Princess Royal Hospital, Haywards Heath
- 4 Special Care Baby Unit, Haywards Heath
- 5 Chalkhill, Haywards Heath
- 6 Crawley Hospital
- 7 Worthing Hospital - Bluefin Ward
- 8 St Richard's Hospital, Chichester
- 9 Downs View School
- 10 Eastbourne Hospital



This year's highlights



The Rockinghorse Emerald Ball

Our Rockinghorse Emerald Ball in March 2022 was our most successful event of the whole year, raising £60,000 - the most we have ever raised at our annual ball.

These funds helped support a range of mental health and wellbeing projects including our innovative Youth Worker programme in the A&E at the Royal Alexandra Children's Hospital, who was in post just three weeks after the event.



Our Rockinghorse Champions

We developed our Rockinghorse Champions programme in January 2021.

This year we have recruited 35 healthcare professionals from across the county, including doctors, nurses, healthcare assistants, support workers and play specialists, to help identify projects that they feel would be most impactful within their area of work.



The return of events

After several years of uncertainty, this year has seen the welcome return of our in-house fundraising events.

From the iDrop to the quiz, the golf day to the Emerald Ball, it's been wonderful to welcome fundraisers back in-person to have some fun, enjoy a special day and of course raise funds for Rockinghorse.



The Big Give campaign

In October 2021 we took part in our first Big Give Campaign.

The Big Give is the UK's biggest match funding campaign that offers charities the chance to have their donations doubled during one week of fundraising.

During this week we raised more than £12,000 to help re-vamp the sensory garden at the Alex.

Message from our CEO

Rockinghorse Children's Charity entered 2021, like many, concerned about the future. We saw an increased demand for our services, whilst facing uncertainty about if, and how, we would fundraise during a global pandemic. However, as 2022 saw a return to normality, so too did the charity. In 2022 our income topped £780,000 – putting us right back to where we were pre-pandemic, and in March we finalised our new strategy – putting children and young people at the heart of our work and putting the charity at the heart of paediatric healthcare in Sussex.

Everything that we do, now comes directly from the doctors, nurses and other healthcare professionals working in children's wards and baby units across Sussex. We provide lifesaving medical equipment, toys and play resources, environments and spaces that help children feel more at home when they are in hospital, ground-breaking research in paediatric medicine and additional staff to ensure kids get the best possible care. Our projects are led by the needs of children and their families. We address the issues children in Sussex are facing. We are here for the bumps and breaks, and cuts and scrapes; but we are also here for the children with cancer, the babies who can't breathe and for the teenagers facing suicide.

I want to thank my team of staff, volunteers and Trustees who have been incredible as we develop new ways of working, new projects and new activities to expand the work we do. I also want to thank everyone who has supported us – the runners and jumpers, the walkers and the trekkers, the bakers and makers, the companies and organisations who donate and sponsor us, the Trusts and Foundations who fund us, the community groups who support us and everyone who comes to our events. Thank you so much for everything you do.



“I want to thank my team of staff, volunteers and Trustees who have been incredible as we develop new ways of working, new projects and new activities to expand the work we do.”

Donna Holland

Chief Executive, Rockinghorse Children's Charity

Our impact

Despite the upheaval we have experienced during the last few years, our focus has continued to be around having the biggest impact on the children of Sussex, their families and the healthcare staff that care for them.

Projects

This year we have supported 60 projects including toys, life-saving equipment, child-friendly spaces, ground-breaking research, activities and additional staff.

Children Seen in A&E

Our support within the A&E in the Royal Alexandra Children's Hospital enables 30,000 children and young people to be better cared for in a crisis

Champions

This year we have recruited 35 champions across the NHS to tell us exactly how we can support their work.

Children we have supported

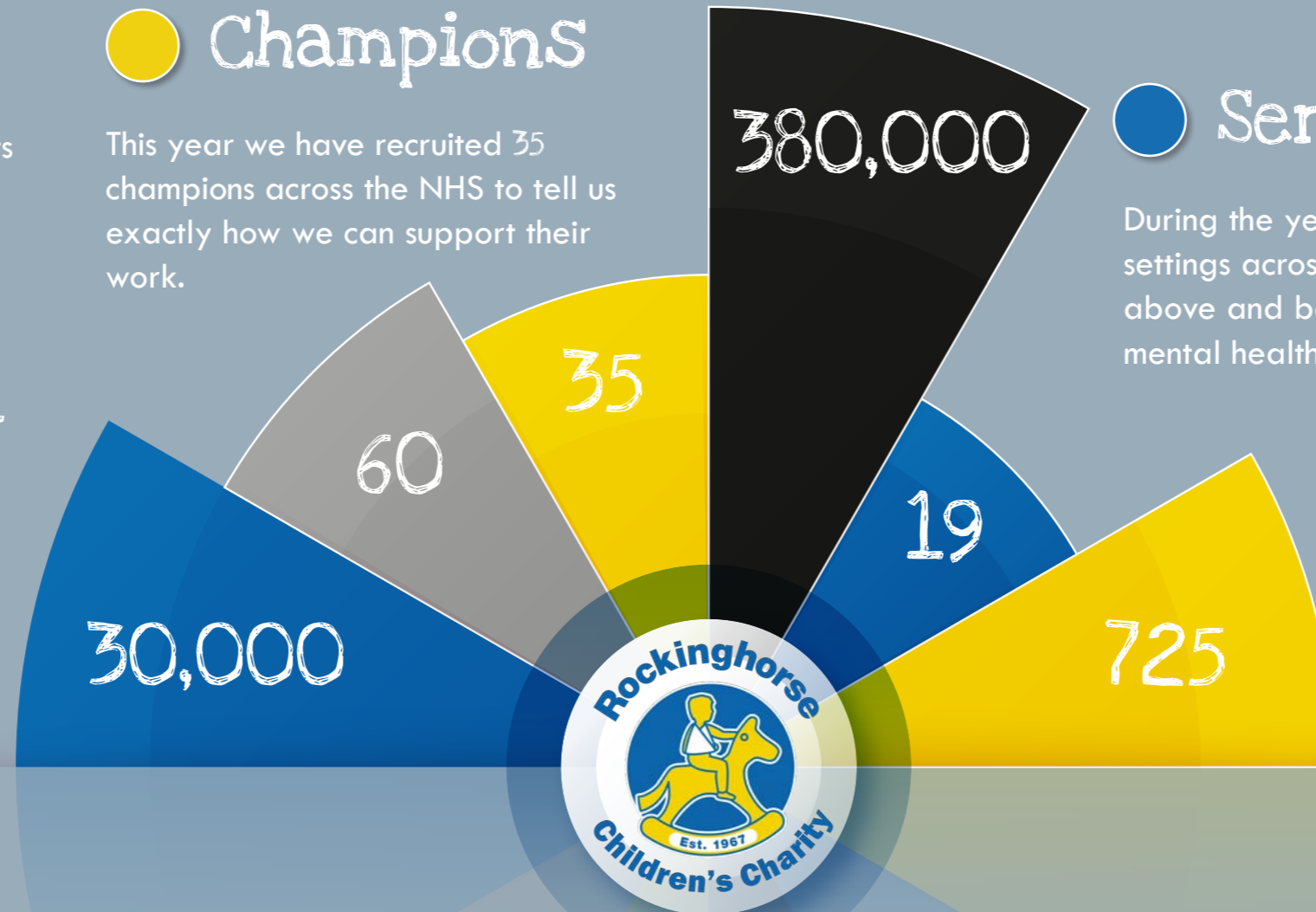
Across all our work, we have supported more than 380,000 children. This ranges from toys and books to help distract a child during an appointment, to cutting edge medical equipment provide the best medical care, our impact has been felt far and wide.

Services

During the year, we have supported 19 different healthcare settings across Sussex. These services, and our support, go above and beyond to support children's physical and mental health and wellbeing.

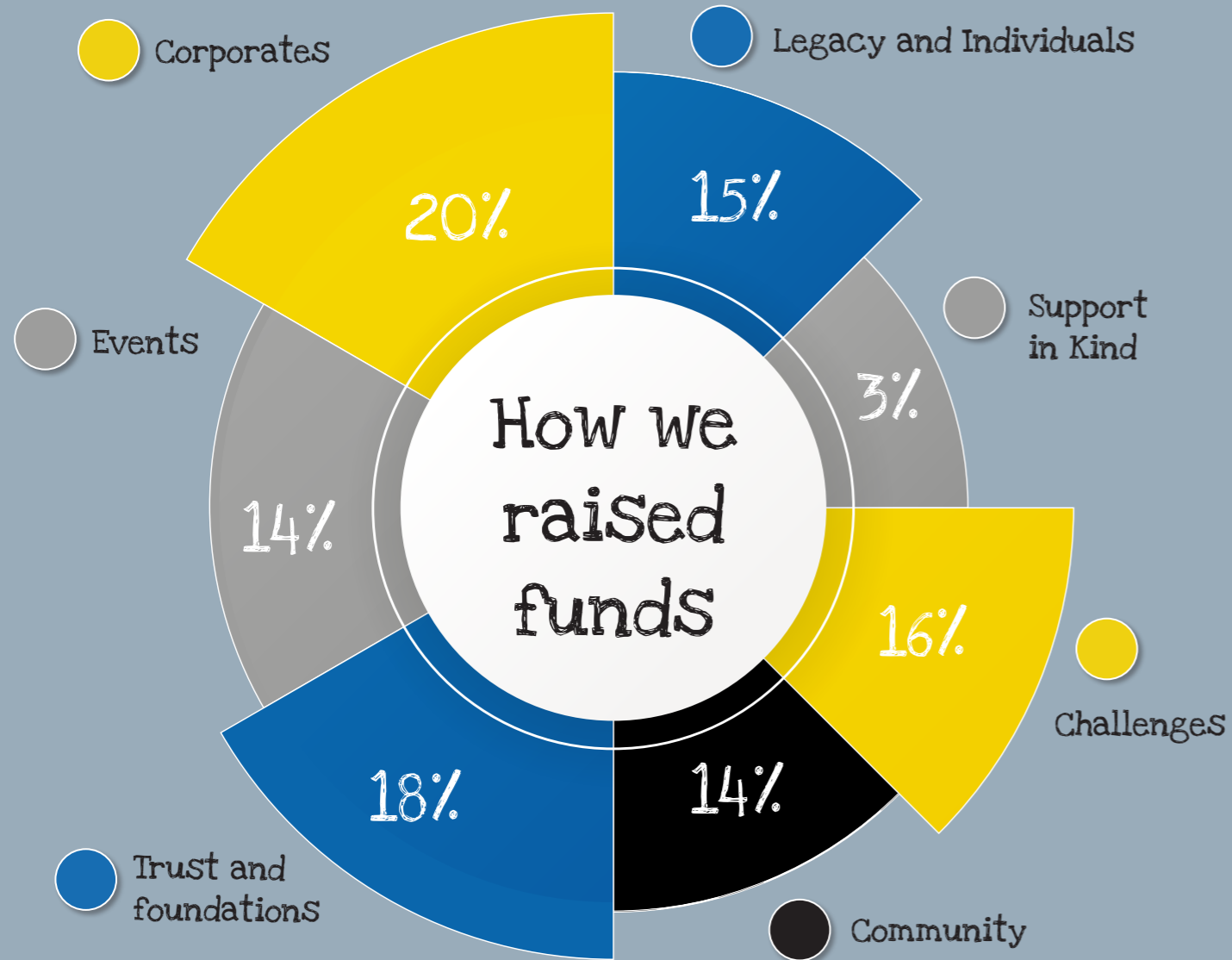
Premature babies

We have helped 725 premature babies, and their parents, during the year, providing important support at a crucial and difficult time.



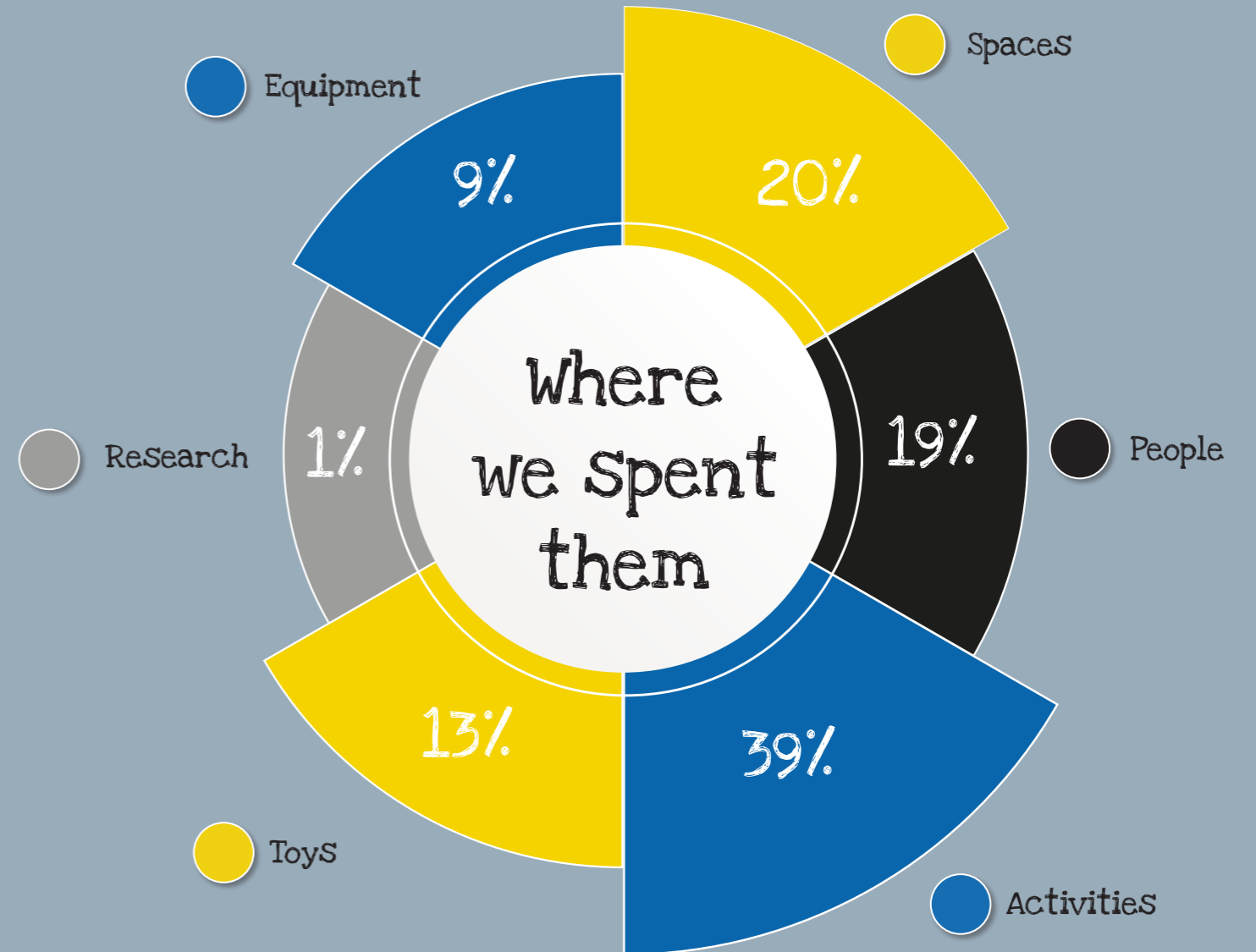
How we raised our funds

We returned to our pre-pandemic financial position and balance our income across a wider range of supporters. Thank you to everyone who supported us.



Where we spent it

We provide a huge range of services and projects to children all over Sussex ensuring kids get the best possible care when they are unwell.





Who we support

Children

In 2021, nine-year-old Venus was diagnosed with a a tumour between her eyes and the front of her brain, taking away the sight in one eye and requiring 85 weeks of chemotherapy.

This has an enormous impact on Venus's life; her experiences at school, her relationships with her friends and how she manages her feelings around her illness.

So the Rockinghorse Woodland Wellbeing sessions this year have given Venus, and other young people managing life-changing conditions, a place to talk about their feelings, meet people with similar experiences and have some fun.

"These days are really nice because you get to make new friends."

Venus, 9



Families

Axel first went to Drove Road Children's Care Home in Brighton when he was seven years old. The scheme offers support to children like Axel who has autism, severe learning disabilities and ADHD.

Axel's mum Catherine came to realise that the scheme is an amazing facility, but needed extra funding to really make the difference.

She said; *"I am so grateful to Rockinghorse for their funding of significant extra things like play equipment and summer parties."*

"Without their help this simply wouldn't happen and they make such a difference to the children and helps make families feel included in their children's care."

"Knowing that Axel was able to get this extra support made his time at Drove Road even better."

Catherine, Axel's mum





NHS Staff

Jonathan Radcliffe is a Neonatal Senior Staff Nurse in the Trevor Mann Baby Unit.

He works with some of the most vulnerable, poorly and premature babies in Sussex and Rockinghorse has provided a range of funding for the department this year.

This has included the Sparkle Fund which enables staff to help parents celebrate milestones with parents, such as a baby reaching 100 days, or their original due date.

Our funding helps Jonathan and his colleagues put the child and parents at the centre of their care, during the worst time in a family's life.

“We simply couldn't do our job without the funding from Rockinghorse; it helps us to go that extra mile.”

Jonathan Radcliffe
Neonatal Senior Staff Nurse, TMBU



Our Champions

Charlotte Savins is a specialist paediatric psychotherapist at the Royal Alex and one of 35 Rockinghorse Champions.

These Champions identify projects that will make the most difference to children and families they support across the county.

Charlotte has received funding for several projects, including sea swimming courses for children with long-term health conditions, mindfulness courses for parents and pain distraction equipment for children with diabetes.

“Without the funding from Rockinghorse, we simply wouldn't be able to provide these additional services that make such a difference to so many children.”

Charlotte Savins
Children's psychologist





Our Supporters



“I was delighted to be able to donate to Rockinghorse as for me, it’s extremely important to support charities close to home”

Chris Eubank Jnr



Over the past year we have again been overwhelmed by the support we have received from so many people in the local community.

From runners to skydivers, businesses to community events, adults to children, their generosity has amazed us.

We’ve had some amazing individuals supporting us during the past twelve months, including 12-year-old Harrison who took the brave step of shaving his head to raise over £1,500 for us and longtime supporter Andy Fountain who ran in six marathon events over two months, adding to his total of £10,000 that he has raised for us over the last 25 years.

The Bears Big Bash banger racing event, organised by Michael Burnage, reached the fundraising milestone of over £170,000 for us since 2012.

We’ve also had some of our wonderful colleagues within the NHS take time out of their busy schedules to support us, such as the seven paediatric nurses from the Alex who took on a skydive, raising over £3,500 for their efforts.

Local businesses have also continued to support us this year. Search Seven, the digital marketing agency run by Gavin Willis, raised £55,000 for us by their 10th anniversary in November 2021. And Chris Eubank Jnr generously donated £10,000 to us in May 2021.

We simply wouldn’t be here without the kind support from all these people, and many more, within our community so thank you to each and every person who has fundraised for us this year.

Activities

Throughout this year, we have funded many activity projects that support children and young people's mental health.

Living with a long-term health condition or managing a new diagnosis can be a challenge for anyone, but especially hard for children, so the projects we have funded aim to help them from diagnosis, through treatment and beyond.



Using art and nature

Many young people struggling with their physical health can feel that their life is defined by hospital stays and outpatient's appointments.

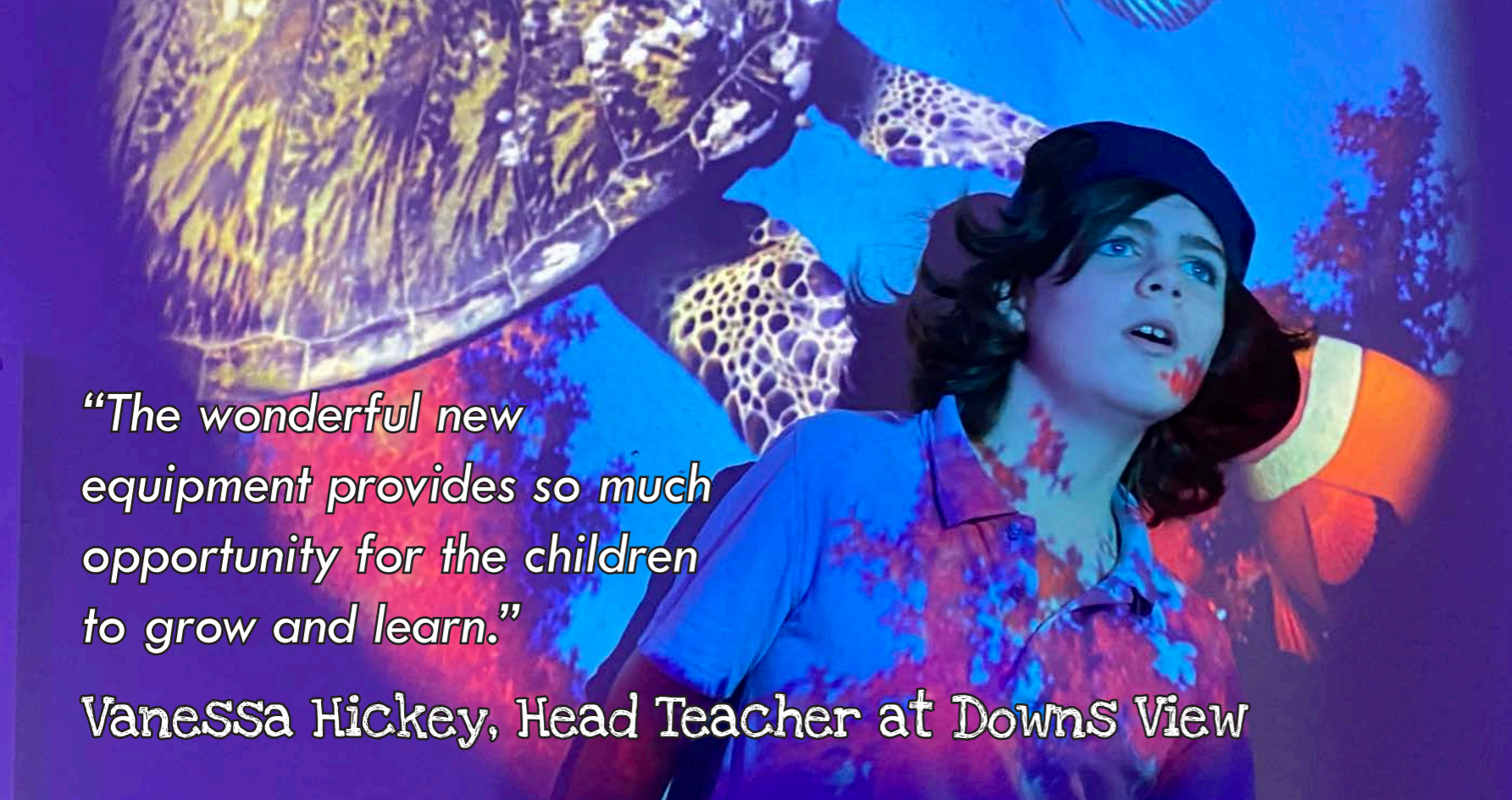
Being able to explore their feelings outside these environments, with other young people in similar situations, can help them feel more normal and less defined by their illness.

That's why our Art Therapy and Woodland Wellbeing sessions have made such a difference to so many young people.



"Look at the smile on her face! That makes everything worthwhile."

Lara, parent



“The wonderful new equipment provides so much opportunity for the children to grow and learn.”

Vanessa Hickey, Head Teacher at Downs View

Equipment

Rockinghorse buys life saving medical equipment and specially adapted equipment that helps make treatment of children in medical environments easier and less stressful.

Thanks to a donation from the Cullum Family Trust, via the Sussex Community Foundation, we have been able to fund specialist equipment in Crawley Hospital, to help children with hearing and speech difficulties.

The speech test equipment helps to test children’s hearing capacity in different environments, including noisy classrooms. This means audiologists are better able to assess their needs and arrange appropriate interventions.

Lights and magic

We also funded a new specialist sensory room at Downs View school in Woodingdean, Brighton.

This space enables the pupils at the school, who all have a range of learning disabilities, to have a space that they can receive support away from the more structured classroom environment, offering a quiet place to reduce their anxiety and of course somewhere interactive and fun.



“Thanks to this new equipment, we have significantly improved the care we can provide.”

The Audiology Team, Crawley Hospital

People

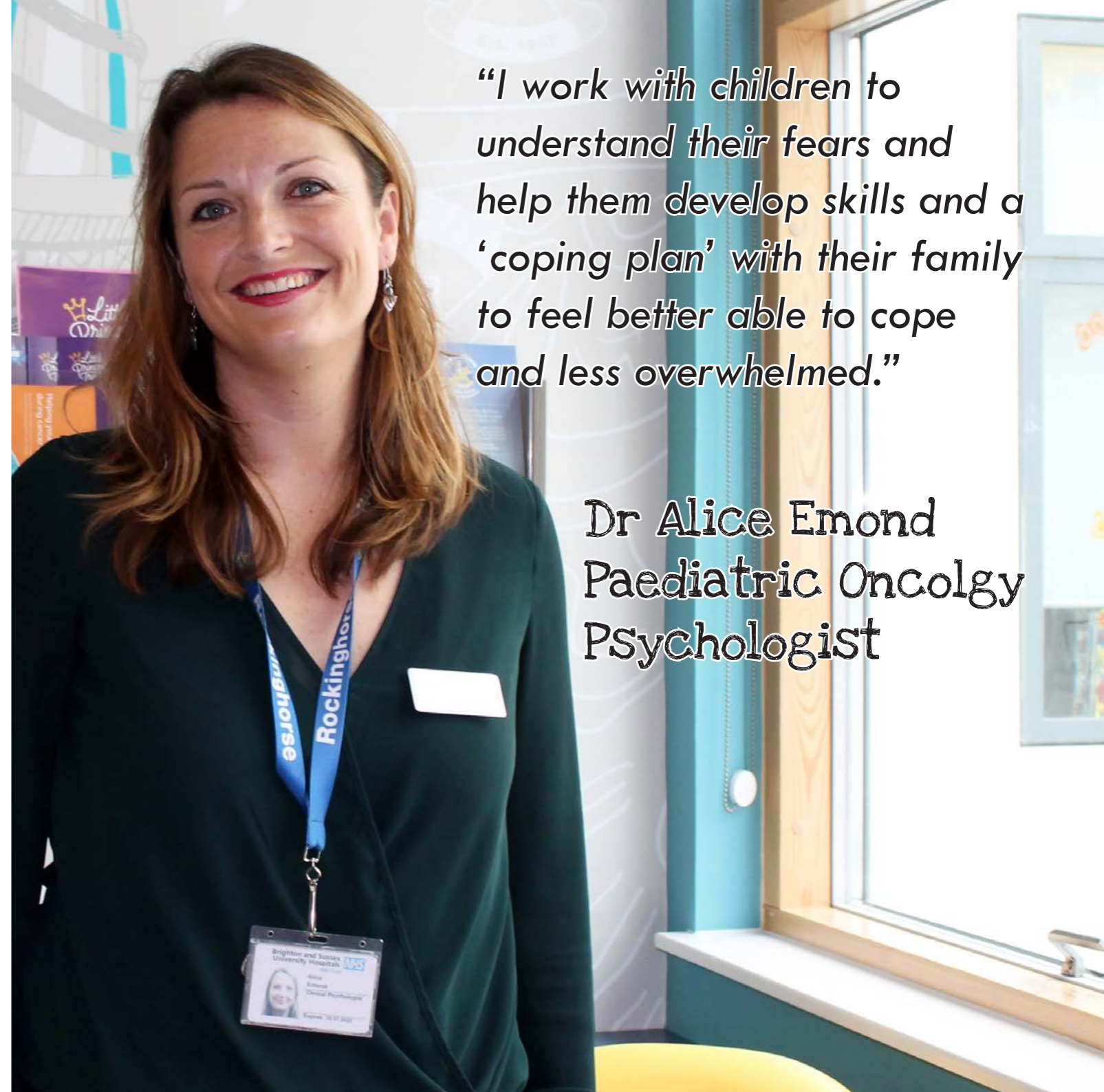
Funding services that actively provide support for children is an important part of our work. These services can help fill the gap for many children and their families, offering support that the NHS simply isn't able to provide.

Working in partnership with our colleagues within the NHS and with specialist local providers, we are able to help children's physical and emotional wellbeing, helping them to manage difficult feelings they may be experiencing, and making their time in hospital more comfortable.

Talking and listening

Being able to discuss our feelings is so important, and for children who have received a cancer diagnosis this can be especially important. Which is why we wanted to continue to fund our wonderful Paediatric Oncology Support Service this year.

Dr Alice Emond works with children and their families to explore their feelings and the physical challenges that inevitably come with their treatment.



“I work with children to understand their fears and help them develop skills and a ‘coping plan’ with their family to feel better able to cope and less overwhelmed.”

**Dr Alice Emond
Paediatric Oncology
Psychologist**

Spaces and research

The environments within which children receive healthcare can have a massive impact on their experiences. Having more holistic surroundings can help them feel calmer, less worried and ultimately makes treatment an altogether less stressful experience.

This is why we fund the refurbishment of spaces in healthcare settings across Sussex. Spaces like a clinical room on the oncology ward at the Royal Alexandra Children's Hospital, so that children feel happier, calmer and less anxious during their cancer treatment.

We also fund vital research, such as a recent study related to skull fractures in children under the age of two, which ultimately helps our colleagues in the NHS be at the forefront of healthcare for children.



"Since the refurbishment more than 30 children and their families have used the clinic room and it's certainly much more friendly and inviting."

Clinical nurse specialist



"It's much more child-friendly"

"It's been a very successful project as we wanted the clinic room to be a more inviting space for patients and families."

"The feedback we have received from families about the room has been extremely positive. It looks cleaner and much more child friendly."

Sophie McGoldrick, Clinical Nurse Specialist



“We can see the impact that these cars have on children feeling worried or scared. Being able to take their minds off what’s happening and relax makes a difference to their experience of being in hospital and can make it easier for the medical staff to treat them.”

Katy Rowe
Learning Disability Play Nurse Specialist

Toys and fun

We all know the important part that toys play for children. Along with being great fun, they can also aid development and help support children’s emotional wellbeing.

Throughout the year we fundraise for thousands of toys, books and craft materials so that children have something to distract them from being scared or worried while they spend time in hospital.

This includes Christmas presents, sensory toys, audio storybook readers and ride on cars for children to ‘drive’ themselves to theatre. All these things help children feel safe, happy and more in control.

Drive on cars

These fabulous little cars reduce anxiety and help create a more positive experience of hospital for young children. Being able to ‘drive’ themselves to theatre takes their mind off their operations and gives them more control over their experience.



The Future

This year we developed and launched the charity's new three strategy - aimed at improving our support for children, increasing the impact of our work, expanding the number of children and families we support and ensuring we can continue to support children for the next 50 years.

At Rockinghorse Children's Charity our vision is for a world where children are healthy and happy. As we work towards this world, we will continue to fund projects, programmes and people that enhance the care and support given by our incredible colleagues in the NHS and beyond. Our purpose as a charity is to help them do more.

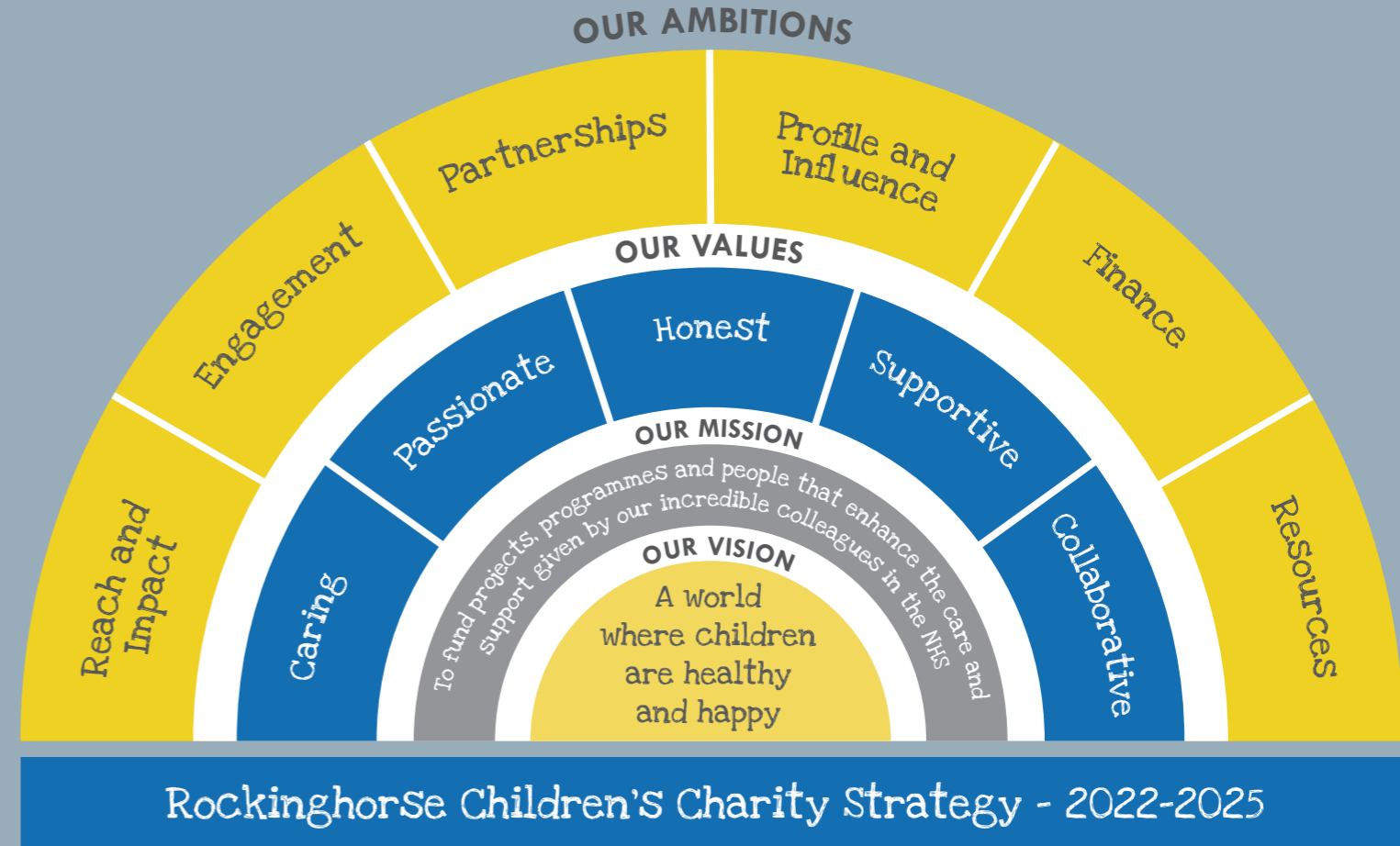
"I'm incredibly proud of our strategy and of our ambition. It's our commitment to go above and beyond for babies, children, teenagers, and their families."

Donna Holland

Chief Executive, Rockinghorse Children's Charity

Our strategy

To develop our strategy, we listened to the people we support and our community. Together we developed six priorities, putting children and their families at the heart of our work and putting the charity at the heart of paediatric healthcare in Sussex.



Thank you



The team at Rockinghorse Children's Charity work incredibly hard all year to make sure we are doing all we can to support babies and children in our community.

But we simply couldn't do what we do without the help of every single one of our wonderful supporters.

Whether it's £1 dropped in a bucket or £1,000 from a local business, every single donation makes a difference.

So thank you.

Rockinghorse Children's Charity

Trustees report

“My heartfelt thank you to everyone who makes our work possible.”

Dr Oli Rahman

Consultant Paediatrician and Lead for the High Dependency Unit
at The Royal Alexandra Children's Hospital, Brighton,
Chair of Rockinghorse Children's Charity

Trustees roundup

I've worked as a Paediatric Consultant at the Royal Alexandra Children's Hospital for 14 years. During that time, I've seen the difference Rockinghorse makes to the lives of children and their families, every day. I've seen the impact they have on the care that doctors and nurses can provide. This year we launched our new champions' programme: healthcare professionals in paediatric services who work with us to create, shape and deliver projects. I want to thank them and all my colleagues, for everything they do, especially now as our NHS struggles to cope with the demands placed upon it.

I also want to thank my fellow Trustees, who volunteer their time, especially to Phil Frier, who chaired the Board of Trustees for four years. His dedication to the cause and leadership throughout the pandemic was vital in ensuring the charity survived and has been able to thrive ever since. Thank you to all the incredible people doing wonderful things to support our work: such as our brilliant Ambassador Michael Burnage MBE continues to raise huge amounts through his annual Big Bears Bash, our partners at Search Seven celebrating raising £55,000 for charities and Asher (eight) who took part in the Superhero run. You are all heroes.

We ended the year with our 55th birthday Ball, raising money for youth mental health support. At the hospital we see first-hand the impact mental ill-health is having on teenagers when they struggle to cope and arrive distraught at the A&E. Our Emerald Ball raised a record breaking £60,000 and just three weeks later a new Youth Worker, funded by Rockinghorse, started at the Alex – supporting children and young people facing the most difficult of situations. The power of Rockinghorse's ability to make instant and lasting change was captured that night.

Trustees Annual Report

Objectives

As set out in the Rockinghorse Children's Charity strategy, our vision is to **create a world where children are healthy and happy**.

We can confirm that we have complied with the duty in section 17 (5) of the Charities Act 2011 to have due regard to the guidance published by the Charities Commission on public benefit when reviewing the Charity's main aims and objectives, and in planning future activities and setting grant making policy for the year.

Structure, Governance and Management

Constitution

The Charity was originally founded in 1967. The company was incorporated on 17 February 1993, and is governed by its Memorandum and Articles of Association dated 29 January 1993.

Grant Making Policy

The Charity established its grant making policy to achieve its objects for the public benefit, to improve the experience of children and their families while they are at The Royal Alexandra Children's Hospital or any local hospital or unit under the control of the Health Authority where the care of children is undertaken.

The beneficiaries of our grant making programme are children, their families and medical practitioners and carers who receive funding for projects which ameliorate the experience for all in hospital.

Code of Ethics

At Rockinghorse we pride ourselves on our non-aggressive, consultative approach to fundraising. No cold calls, no call centres, no pressure.

Our cause is built on long lasting relationships which have been cultivated over many years through trust, honesty, transparency and a commitment to show every one of our supporters where your funds go.

Our team are here to help and guide anyone wishing to support us in any way they can, whether that's direct fundraising or volunteering.

Either way, Rockinghorse make the donor journey a hassle free and enjoyable process free from the moment you first make contact, which for many of our supporters can be at a very sensitive time in their lives. We are an independent charity that is part of the fabric of the very community we serve.

Organisational Structure

The Board of Directors consists of ten Trustees and chaired by Dr Oli Rahman following the retirement of the previous Chair and Trustee, Phil Frier, who stepped down in January 2022.

During the year Rebecca Turnbull-Simspon resigned and the Board thank her for her service. There have been three new appointments. Returning member, Andrew Mosley, Parent Trustee Sam Thomas and new secretary Nadia Cowdry.

Every member of the Board, including the Chairman, is elected for one year and stands for re-election at the next Annual General Meeting.

New Trustees are nominated by existing Trustees and selected by majority vote.

All new Trustees are inducted which includes a meeting with the Chairman, a meeting with the Chief Executive, a tour of the Royal Alexandra Hospital as well as completion of Companies House and Charity Commission documentation.

The Board meets at least six times a year and this is supplemented by virtual and telephone meetings as circumstances require.

The Trustees have delegated the day-to-day management to the senior management team who report on the performance against budget, which are approved each year by the Trustees.

All Trustees give their time freely and no remuneration was paid in the year.

Financial Review

We would like to express our heartfelt thanks to every trust, company, community group, event participant, individual and volunteer who supported us during the year.

Rockinghorse receive no statutory funding and very little income comes from legacies therefore we rely entirely on these voluntary donations to fund our services. During the financial year Rockinghorse raised a total of £782,868 (2021: £636,119 ▲ 23%).

Costs, excluding grants increased to £438,730 (2021: £428,850 ▲ 2%), the increase in direct event costs was counterbalanced by reduced staff costs.

Rockinghorse was proud to support more than 60 projects (2021: 45 ▲ 33%) throughout the year totalling £249,498 (2021: £293,630 ▼ 15%).

Trusts and Foundations

We were successful in receiving funds from 31 different trusts generating £132,815 of income (2021: £220,694 ▼ 40%). Although the amount raised from trusts appears to have decreased from prior year, in 2021 we received a large grant from the Camelia Botnar Foundation for £70,000 as well as a number of other emergency covid grants which makes direct comparison difficult.

Challenge

Challenge event income rose to £114,470 (2021: £85,827, ▲ 33%). While some events were still not able to happen due to Covid, we were pleased to be able to start to see the return of the Brighton half and full marathon as well as the Rockinghorse Superhero Absail and Santa Dash.

Corporate

Local businesses are a vital part of fundraising through the year and are our largest source of income. Through generous donations, beneficiary events and numerous employee fundraising activities during the year, collectively our corporates raised £145,123 (2021: £83,840 ▲ 73%)

Individual

We were thankful for our loyal and new regular givers and those that choose to support us through special occasion giving, whether that be a birthday or wedding. We are also grateful for all the in-memory donations that we received during the year. Our individual fundraisers generated £58,144 (2021: £59,609 ▼ 2%)

Community

We are grateful to the community groups, schools, religious groups, and supermarkets that all help make a difference this year to collectively raise £104,305 (2021: £44,960 ▲ 131%).

Events

We were delighted to be able to return to our usual suite of events including our Golf day, Bonfire Quiz and annual Ball where we celebrated our 55th Anniversary where funds raised went to help support Sussex children with their mental health. Event income throughout the year generated £99,781 (2021: £36,697, ▲ 172%).

Legacy

Whilst we do not tend to receive large sums of income from legacies, we were beneficiary of a £50,000 legacy during the year (2021: £10,000 ▲ 400%).

Gift in Kind

We were grateful to be the beneficiary of the Christmas giving trees for both Churchill Square and Bluewater shopping centres and were grateful to all the businesses and individuals that bought presents at Christmas so we could give to the children of the services we support.

Charity Reserves

The Board of Trustees continue to take a prudent approach to the financial stability of the Charity.

The Trustees have approved an update to the Charity's reserve policy, and this has been implemented within the financial year. The new policy has been carefully designed following guidance from Charities Commission guidance, "Charity reserves, building resilience" (CC19).

The Trustees have approved a designated fund to ring fence the committed projects of the Charity. At year end there are total commitments of £423,567. Of this £139,985 is held in restricted reserves, with the balance of £283,582 being moved from unrestricted reserves to designated reserves.

The reserves policy looks to ensure that unrestricted reserves are enough to cover six months of staff costs and overheads for the following financial years budget, which is approximately £225,000. The Trustees seek to spend the excess of unrestricted reserves over and above this in the next financial year.

The Charities reserve policy is reviewed annually, to ensure fit for purpose, up to date and reflects the legislative requirements.

Going Concern

The Trustees believe that the Charity's reserves level, strong cash holdings and disciplined approach to budgeting mean that the immediate future of the Charity over the next 12 to 18 months is secure and that on this basis the Charity is a going concern.

Investment Policy

Consistent with a limited risk appetite, reserves are currently held in cash in recognition of a volatile and unpredictable investment market and in keeping with advice taken by the board who will continue to keep this position under review as appropriate.



Rockinghorse Children's Charity

Auditors Report

Independent auditor's report to the members of Rockinghorse Children's Charity.

Opinion

We have audited the financial statements of Rockinghorse Children's Charity (the 'charitable company') for the year ended 31 March 2022 which comprise the Statement of Financial Activities, the Balance Sheet, the Cash Flow Statement and notes to the financial statements, including significant accounting policies.

The financial reporting framework that has been applied in their preparation is applicable law and United Kingdom Accounting Standards, including FRS 102 The Financial Reporting Standard applicable in the UK and Republic of Ireland (United Kingdom Generally Accepted Accounting Practice).

In our opinion, the financial statements:

- give a true and fair view of the state of the charitable company's affairs as at 31 March 2022 and of its incoming resources and application of resources, including income and expenditure, for the year then ended;
- have been properly prepared in accordance with United Kingdom Generally Accepted Accounting Practice;
- have been prepared in accordance with the requirements of the Companies Act 2006.

Basis for opinion

We conducted our audit in accordance with International Standards on Auditing (UK) (ISAs (UK)) and applicable law. Our responsibilities under those standards are further described in the Auditor's responsibilities for the audit of the financial statements section of our report. We are independent of the charitable company in accordance with the ethical requirements that are relevant to our audit of the financial statements in the UK, including the FRC's Ethical Standard, and we have fulfilled our other ethical responsibilities in accordance with these requirements.

We believe that the audit evidence we have obtained is sufficient and appropriate to provide a basis for our opinion.

Conclusions relating to going concern

In auditing the financial statements, we have concluded that the trustees' use of the going concern basis of accounting in the preparation of the financial statements is appropriate.

Based on the work we have performed, we have not identified any material uncertainties relating to events or conditions that, individually or collectively, may cast significant doubt on the charitable company's ability to continue as a going concern for a period of at least twelve months from when the financial statements are authorised for issue.

Our responsibilities and the responsibilities of the trustees with respect to going concern are described in the relevant sections of this report.

Other information

The other information comprises the information included in the annual report other than the financial statements and our auditor's report thereon. The trustees are responsible for the other information contained within the annual report.

Our opinion on the financial statements does not cover the other information and, except to the extent otherwise explicitly stated in our report, we do not express any form of assurance conclusion thereon.

Our responsibility is to read the other information and, in doing so, consider whether the other information is materially inconsistent with the financial statements or our knowledge obtained in the course of the audit, or otherwise appears to be materially misstated.

If we identify such material inconsistencies or apparent material misstatements, we are required to determine whether this gives rise to a material misstatement in the financial statements themselves.

If, based on the work we have performed, we conclude that there is a material misstatement of this other information, we are required to report that fact.

We have nothing to report in this regard.

Opinions on other matters prescribed by the Companies Act 2006

In our opinion, based on the work undertaken in the course of the audit:

- the information given in the Report of the Trustees for the financial year for which the financial statements are prepared is consistent with the financial statements; and

- the Report of the Trustees has been prepared in accordance with applicable legal requirements.

Matters on which we are required to report by exception

In the light of the knowledge and understanding of the charitable company and its environment obtained in the course of the audit, we have not identified material misstatements in the Report of the Trustees. We have nothing to report in respect of the following matters in relation to which the Companies Act 2006 requires us to report to you if, in our opinion:

- adequate accounting records have not been kept, or returns adequate for our audit have not been received from branches not visited by us; or
- the financial statements are not in agreement with the accounting records and returns; or
- certain disclosures of trustees' remuneration specified by law are not made; or
- we have not received all the information and explanations we require for our audit; or
- the trustees were not entitled to prepare the financial statements in accordance with the small companies regime and take advantage of the small companies' exemptions in preparing the Report of the Trustees and from the requirement to prepare a Strategic Report.

Responsibilities of trustees

As explained more fully in the Statement of Trustees' Responsibilities, the trustees are responsible for the preparation of the financial statements and for being satisfied that they give a true and fair view, and for such internal control as the trustees determine is necessary to enable the preparation of financial statements that are free from material misstatement, whether due to fraud or error.

In preparing the financial statements, the trustees are responsible for assessing the charitable company's ability to continue as a going concern, disclosing, as applicable, matters related to going concern and using the going concern basis of accounting unless the trustees either intend to liquidate the charitable company or to cease operations, or have no realistic alternative but to do so.

Auditor's responsibilities for the audit of the financial statements

Our objectives are to obtain reasonable assurance about whether the financial statements as a whole are free from material misstatement, whether due to fraud or error, and to issue an auditor's report that includes our opinion.

Reasonable assurance is a high level of assurance but is not a guarantee that an audit conducted in accordance with ISAs (UK) will always detect a material misstatement when it exists. Misstatements can arise from fraud or

error and are considered material if, individually or in the aggregate, they could reasonably be expected to influence the economic decisions of users taken on the basis of these financial statements.

Irregularities, including fraud, are instances of non-compliance with laws and regulations. We design procedures in line with our responsibilities, outlined above, to detect material misstatements in respect of irregularities, including fraud. The extent to which our procedures are capable of detecting irregularities, including fraud is detailed below:

We gained an understanding of the legal and regulatory framework applicable to the charitable company and the sector in which it operates, and considered the risk of acts by the charitable company that were contrary to applicable laws and regulations, including fraud.

We designed audit procedures to respond to the risk, recognising that the risk of not detecting a material misstatement due to fraud is higher than the risk of not detecting one resulting from error, as fraud may involve deliberate concealment by, for example, forgery or intentional misrepresentations, or through collusion.

We focussed on laws and regulations which could give rise to a material misstatement in the financial statements, including, but not limited to, the Companies Act 2006, Charities Act 2011 and UK tax legislation. Our tests included agreeing the financial statement disclosures to underlying supporting documentation, enquiries with management and enquiries of legal counsel when considered necessary.

There are inherent limitations in the audit procedures described above and, the further removed non-compliance with laws and regulations is from the events and transactions reflected in the financial statements, the less likely we would become aware of it.

We did not identify any key audit matters relating to irregularities, including fraud. As in all our audits, we also addressed the risk of management override of internal controls, including testing journals and evaluating whether there was evidence of management bias by the trustees that represented a risk of material misstatement due to fraud.

A further description of our responsibilities is available on the Financial Reporting Council's website at: www.frc.org.uk/auditorsresponsibilities. This description forms part of our auditor's report.

Use of our report

This report is made solely to the charitable company's members, as a body, in accordance with Chapter 3 of Part 16 of the Companies Act 2006. Our audit work has been undertaken so that we might state to the charitable company's members those matters we are required to state to them in an auditors' report and for no other purpose.

To the fullest extent permitted by law, we do not accept or assume responsibility to anyone other than the charitable company and the charitable company's members as a body, for our audit work, for this report, or for the opinions we have formed.



**John Thacker FCA DChA (Senior Statutory Auditor)
for and on behalf of Chariot House Limited
Chartered Accountants and Statutory Auditor
44 Grand Parade
Brighton
East Sussex
BN2 9QA**

Date: 15 November 2022

Rockinghorse Children's Charity

Financial Statements

STATEMENT OF FINANCIAL ACTIVITIES

	Note	Unrestricted Funds	Restricted Funds	Designated Funds	Total 2022	Unrestricted Funds	Restricted Funds	Total 2021
		£	£		£	£		£
Income from:								
Donations and legacies		553,627	71,097		624,724	362,974	21,075	384,049
Investment income	2	698	-		698	1,341	-	1,341
Other income	4	24,631	-		24,631	30,035	-	30,035
Charitable activities	3	3,150	129,665		132,815	21,270	199,424	330,694
Total		582,106	200,762		782,868	415,620	220,499	636,119
Expenditure on:								
Raising funds	5	160,277	-		160,277	188,622	-	188,622
Charitable activities	6	356,089	171,862		527,951	320,398	213,460	533,858
Total		516,366	171,862		688,228	509,020	213,460	722,480
Net income before transfers		65,740	28,900		94,640	(93,400)	7,039	(83,361)
Transfers		(282,580)	(1,002)	283,582	-	12,569	(12,569)	-
Net income		(216,840)	27,898	283,582	94,640	(80,831)	(5,530)	(86,361)
Fund balances brought forward at 31 March 2021	14	500,748	170,432	-	671,180	581,579	175,962	757,541
Fund balances carried forward at 31 March 2022	14	283,908	198,330	283,582	765,820	500,748	170,432	671,180

BALANCE SHEET

	Notes	2022		2021	
		£	£	£	£
Fixed Assets					
Tangible fixed assets	10		3,128		4,784
			3,128		4,784
Current Assets					
Debtors	11	44,885		33,980	
Cash at bank and in hand		774,904		772,456	
		819,789		806,436	
Creditors: Amounts falling due within on year	12	(57,097)		(140,040)	
		(57,097)			
Net Current Assets			762,692		666,396
Net Assets			765,820		671,180
Funds					
Unrestricted funds	14		283,908		500,748
Restricted funds	14		198,330		170,432
Designated funds	14		283,582		-
			765,820		671,180

These financial statements were approved by the Trustees on 15 November 2022 and signed on their behalf by:



Dr Oli Rahman
Chair

The notes of pages 52 to 62 form part of these Accounts.

STATEMENT OF CASH FLOW

	2022		2021	
	£	£	£	£
Reconciliation of net movement in funds to net cash lows from operating activities				
Net movement in funds	94,640		(86,361)	
Depreciation	3,264		2,728	
(Increase)/decrease in debtors	(10,905)		14,699	
Increase/(decrease) in creditors	(82,943)		37,240	
Net cash outflow from operating activities		4,056		(31,694)
Capital expenditure				
Purchase of tangible fixed asset		(1,608)		(6,170)
Net cash outflow from capital expenditure		(1,608)		(6,170)
Increase/(decrease) in cash in the year		2,448		(37,864)
Reconciliation of net cash flow to movement in net cash funds				
Net funds at beginning of the year		772,456		810,320
Change in net funds during the year		2,448		(37,864)
Net funds at the end of the year		774,904		772,456

The notes of pages 52 to 62 form part of these Accounts.

NOTES TO THE FINANCIAL STATEMENTS

1. ACCOUNTING POLICIES

The following accounting policies have been applied consistently in dealing with items which are considered material in relation to the financial statements.

(a) Basis of Preparation

The financial statements have been prepared in accordance with applicable accounting standards. In addition they have been prepared in accordance with Accounting and Reporting by Charities: Statement of Recommended Practice (FRS102), applicable UK Accounting Standards and the Companies Act 2011.

The Charity meets the definition of a public benefit entity under FRS102.

(b) Going concern

The accounts are prepared on a going concern basis after consideration by the trustees that there are no material uncertainties about the Charity's ability to continue as a going concern. Such consideration includes a review of committed income and expenditures, cash flows and reserves. The trustees do not consider that there are any sources of estimation uncertainty at the reporting date that have a significant risk of causing a material adjustments to the carrying amount of assets and liabilities within the next reporting period.

(c) Funds Accounting

The Charity has various types of funds for which it is responsible and which require separate disclosure:

Unrestricted funds

Funds which are expendable at the discretion of the Trustees in furtherance of the objects of the Charity.

Restricted funds

These funds are subject to specific trusts, which may be declared by the donor or with their authority are expendable at the discretion of the Trustees in furtherance of some particular aspect of the objects of the Charity.

Designated funds

These funds are those unrestricted funds which have been set aside by Trustees for future grant commitments.

(d) Incoming Resources

Donations - on the receipt of cash or under the terms of contract as appropriate, together with any income tax recoverable. Donations in the form of donated time have not been quantified as this is not possible and

therefore are neither recorded as donated income nor as an expense in the financial statements. Donations in the form of goods are valued by the Trustees at the date of receipt and are included as income.

Legacies – recognised on a receivable basis when capable of financial measurement.

Grants receivable – on a receivable basis on notification.

Investment income – on a receivable basis, together with any income tax recoverable.

Gifts and services in kind – on a receivable basis. Their gross value is estimated to be the price it is estimated we would have to pay in the open market.

(e) Resources Expended

Resources expended are accounted for on an accruals basis.

(i) Allocation of overhead and support costs

Overhead and support costs have been allocated between costs of generating funds, charitable activities and governance. Costs which are not wholly attributable to an expenditure category have been apportioned. Where costs are shared by two or more charitable activities, for example support costs, these costs have been apportioned between categories on the basis of time spent by staff as a proportion and this is analysed in note 7.

(ii) Raising funds

The costs of raising funds are those costs attributable to generating income for the Charity, other than those costs incurred in undertaking charitable activities or the costs incurred in undertaking trading activities in furtherance of the Charity's objects. The costs of generating funds represent fundraising costs together with investment management fees (see note 5).

(iii) Charitable activities

Costs of charitable activities comprise all costs incurred in the pursuit of the charitable objects of the Charity. These costs, where not wholly attributable, are apportioned between the categories of charitable expenditure in addition to the direct costs. The total costs of each category of charitable expenditure therefore include support costs and an apportionment of overheads, as shown in note 6.

(iv) Grants payable

Grants payable are payments made to third parties in the furtherance of the charitable objectives of Rockinghorse. Single or multi-year grants are accounted for when either the recipient has a reasonable expectation that they will receive a grant and the Trustees have agreed to pay the grant without condition, or

the recipient has a reasonable expectation that they will receive a grant and any condition attaching to the grant is outside of the control of the Charity.

(a) Capitalisation and depreciation of fixed assets

Tangible fixed assets are recorded at cost. Depreciation is calculated on a straight line basis at rates appropriate to write off the costs of the assets over their expected useful economic lives as follows:

Leasehold Improvements	- 3 years
Other equipment	- 3 years
Furniture / Fixtures	- 3 years

It is the Charity's policy that items below £2,500 are not capitalised and are instead expensed in the year of purchase.

The charity regularly carries out impairment reviews of fixed assets.

(a) Commitments

Commitments which are legally binding are included as liabilities.

(b) Research expenditure

Research expenditure is written off in the year it is incurred.

(c) Operating leases

Rentals payable under operating leases are charged on a straight-line basis over the term of the lease.

(d) Taxation

The charity is considered to pass the tests set out in Paragraph 1 Schedule 6 of the Finance Act 2010 and therefore it meets the definition of a charitable company for UK corporation tax purposes. Accordingly the charity is potentially exempt from taxation in respect of income or capital gains received within categories covered by Chapter 3 Part 11 of the Corporation Tax Act 2010 or Section 256 of the Taxation of Chargeable Gains Act 1992, to the extent that such income or gains are applied exclusively to charitable purposes.

(e) Pension

The pension cost charge represents the contribution payable by the charity to the employers' defined contribution pension scheme.

(f) Financial instruments

The charity only has financial assets and financial liabilities of a kind that qualify as basic financial instruments. Basic financial instruments are initially recognized at transaction value and subsequently measured at amortised cost.

2. INCOME FROM FIXED ASSET INVESTMENTS	2022	2021
	£	£
Interest income	698	1,341
Total	698	1,341

3. RESTRICTED GRANTS RECEIVED	2022	2021
	£	£
Albion as One Fund	-	10,000
Carpenter Box Charitable Foundation	500	-
Cullum Family Trust	5,000	-
David Solomons Charitable Trust	-	1,000
Fitton Trust	250	-
Mazars Charitable Trust	-	1,000
Mrs A Lacy Tate Trust	500	-
Peter Harrison Foundation	3,000	-
Rowan Bentall Charitable Trust	250	-
Samphire Trust	4,500	-
Sandra Charitable Trust	3,000	-
The Ada Oliver Will Trust	-	200
The Alchemy Foundation	500	-
The Anton Jurgens Charitable Trust	-	5,000
The Ashfield Trust	22,000	15,000
The Camelia Botnar Foundation	25,000	69,830
The Chalk Cliff Trust	3,250	2,100
The Charlotte Marshall Charitable Trust	976	-
The Childwick Trust	-	4,000
The David Brooke Charity	2,500	3,000
The Dixie Rose Findlay Charitable Trust	-	1,000
The D'Oyly Carte Charitable Trust	-	2,939
The EF and MG Hall Charitable Trust	-	2,000
The Ernest Kleinwort Charitable Trust	-	4,470

The Gannett Foundation	1,902	-
The Geoff and Fiona Squire Foundation	5,000	-
The Hall Charitable Trust	1,000	-
The Hedley Charitable Trust	1,500	-
The Hospital Saturday Fund	1,447	-
The Ian Askew Charitable Trust	1,000	1,000
The Masonic Charitable Foundation	-	14,600
The Michael and Shirley Hunt Charitable Trust	1,000	1,300
The Miss Pannett Charitable Trust	250	-
The Openwork Foundation	-	10,000
The Pebble Trust	-	1,000
The P E Lennard Will Trust	-	5,000
The Reed Foundation	2,000	-
The R S Brownless Charitable Trust	200	-
The Schreier Foundation	1,000	-
The Shanly Foundation	-	1,000
The Sir Cliff Richard Charitable Trust	-	1,000
The Sussex Community Foundation	10,230	5,000
The Trumark Trust	-	4,000
Webb Family Charitable Trust	2,000	3,000
Youth Music	29,910	30,985
Total	129,665	199,424

GRANTS RECEIVED (UNRESTRICTED)		
	2022	2021
	£	£
Brighton and Hove City Council	-	10,000
Hogarth Charitable Trust	150	-
The Alan Greenaway Foundation	500	-
The Ashfield Trust	-	5,000
The Gatwick Airport Community Trust	-	1,020
The Openwork Foundation	-	250
The Orr Mackintosh Foundation	-	5,000
The Tallulah Lewis Foundation Limited	2,500	-
Total	3,150	21,270
Total Grants received	132,815	220,694

4. OTHER INCOME	2022	2021
	£	£
Rental income	9,500	16,500
Gift in Kind - IT support and equipment	11,131	13,535
Incentivised Switching Dowry	4,000	-
Total	24,631	30,035

5. EXPENDITURE ON RAISING FUNDS	Unrestricted Funds	Restricted Funds	2022	2021
	£	£	£	£
Staff salaries	59,724	-	59,724	130,023
Support costs allocation (see note 7)	18,278	-	18,278	22,216
Direct costs	82,275	-	82,275	36,383
	160,277	-	160,277	188,622
6. EXPENDITURE IN CHARITABLE ACTIVITIES	Unrestricted Fund	Restricted Funds	2022	2021
	£	£	£	£
Staff salaries	210,204	-	210,204	201,971
Support cost allocation (see note 7)	64,329	-	64,329	34,507
Audit fees	3,920	-	3,920	3,750
Grants paid (see below)	77,636	171,862	249,498	293,630
Total	356,089	171,862	527,951	533,858

	2022	2021
	£	£
Grants payable to institutions		
Royal Alexandra Children's Hospital	157,365	197,689
TMBU & SCBU	13,519	22,008
Chalkhill activities programme	15,459	25,252
Other	63,155	48,681
Total	249,498	293,630

7. ALLOCATION OF SUPPORT COSTS	Raising funds	Charitable activities	2022	2021
	£	£	£	£
Rent	3,762	13,239	17,001	16,765
Heat, light, water, maintenance	4,394	15,464	19,858	7,706
Administration	2,633	9,267	11,900	5,723
Travel	370	1,303	1,673	2,385
Communication	1,989	7,001	8,990	8,831
Legal and other fees	5,130	18,055	23,185	15,313
Total	18,278	64,329	82,607	56,723

8. REMUNERATION OF TRUSTEES AND TRUSTEES' EXPENSES REIMBURSED

No Trustees, or connected persons, received any remuneration during the year. No payments were made to any pension schemes in respect of Trustees and no expenses were reimbursed either this year or last year.

9. STAFF NUMBERS AND COSTS

The average number of persons employed by the company during the year was 10 (2021:10).

The aggregate payroll costs were:

	2022	2021
	£	£
Wages and salary	240,584	296,923
Social security costs	19,751	23,548
Pension	9,593	11,523
Total	269,928	331,994

10. FIXED ASSETS	Office Equipment
	£
Costs	
At 1 April 2021 brought forward	8,183
Additions	1,608
At 31 March 2022	9,791
Depreciation	
At 1 April 2021 brought forward	3,399
Charge for the year	3,264
At 31 March 2022	6,663
Written Down Values	
At 31 March 2022	3,128
At 31 March 2021	4,784

11. DEBITORS: amounts due within one year	2022	2021
	£	£
Prepayments	19,952	17,632
Prepaid grants	-	11,889
Other debtors	24,933	4,459
TOTAL	44,885	33,980

12. CREDITORS: amounts falling due within one year	2022	2021
	£	£
Trade creditors	18,945	64,848
Social security and other taxes	7,832	6,816
Accruals and Deferred Income	30,320	68,376
TOTAL	57,097	140,040

13. OPERATING LEASE COMMITMENTS	2022	2021
The Charity holds the following leases over their premises	£	£
Land and buildings expiring between 2 - 5 years	17,000	-
Land and buildings expiring over 5 years	-	17,000
Other leases expiring between less than 1 year	4,852	-
Other leases expiring between 1-2 years	-	4,852

14: MOVEMENT OF FUNDS	Unrestricted Funds	Restricted Funds	Designated Funds	Total
	£	£	£	£
At 1 April 2021	500,748	170,432	-	671,180
Movement in funds in the year	(216,840)	27,898	283,582	94,639
At 31 March 2022	283,908	198,330	283,582	765,819

Restricted Funds	Balance b/fwd	Income	Expenditure	Transfers	Balance c/fwd
	1 April 2021				31 March 2022
	£	£	£	£	£
Royal Alexandra Children's Hospital	22,193	120,536	66,579	(667)	75,483
Trevor Mann Baby Unit	55,042	4,491	13,114	-	46,419
The Princess Royal Hospital - Special Care Baby Unit	8,944	80	-	-	9,024
Chalkhill Activities Programme	65,299	-	15,459	-	49,840
Chailey Heritage - Therapeutic riding provision	-	10,000	10,000	-	-
Other Children's Services	18,954	65,655	66,710	(335)	17,564
Total	170,432	200,762	171,862	(1,002)	198,330

Designated Funds	Balance b/fwd	Income	Expenditure	Transfers	Balance c/fwd
	1 April 2021				31 March 2022
	£	£	£	£	£
Royal Alexandra Children's Hospital	-	-	-	213,941	213,941
The Princess Royal Hospital - Special Care Baby Unit	-	-	-	4,387	4,387
Chalkhill Activities Programme	-	-	-	46,952	46,952
Other Children's Services	-	-	-	18,303	18,303
Total	-	-	-	283,582	283,582

15: SHARE CAPITAL

The company has no share capital. The liability guaranteed by each member is £10. The authorised membership of the company is 15. At 31 March 2021 the membership was 9 (2021: 8)

Andrew Moseley	appointed 19/07/2021
Barry Carden	
Gary Gibson (aka Sid Sloane)	
Dr Oli Rahman (Chair)	stepped up as chair 18/01/2022
Phil Frier	stepped down as chair 18/01/2022
Rebeccan Turnbull-Simpson	resigned 16/03/2022
Rose Read	
Dr Ryan Watkins	
Sam Thomas	appointed 27/09/2021
Scott Marshall	

16. RELATED PARTY TRANSACTIONS

One of the trustees is employed as Divisional Chief at University Hospitals Sussex and another trustee holds the position as Lead for the Paediatric HDU at The Royal Alexandra Children's Hospital. In compliance with the conflicts of interest policy, although these trustees have influence over grants awarded to their department, Trustee decisions for all grants are made by majority votes.

One trustee holds the position of Managing Director at the hotel where the 2021 Rockinghorse Ball took place. All transactions are on an arm's length basis.

REFERENCE AND ADMINISTRATIVE DETAILS

Name of Charity:	Rockinghorse Children's Charity
Charity Registration No:	1018759
Company No:	2791054
Registered Office/Address:	13 Prince Albert Street Brighton East Sussex BN1 1HE
Royal Patron:	HRH Princess Alexandra
Trustees/Directors:	Andrew Mosley (appointed 19/07/21) Barry Carden Gary Gibson (aka Sid Sloane) Oli Rahman (Chair) Phil Frier Rebecca Turnbull-Simpson (resigned 16/03/22) Rosie Read Ryan Watkins Sam Thomas (appointed 27/09/21) Scott Marshall

Chief Executive: Donna Holland (appointed 01/11/21)

Bankers: Metro Bank
82 North Street
Brighton
BN1 1ZA

Independent Auditors: Chariot House Limited
44 Grand Parade
Brighton
East Sussex
BN2 9QA

Legal Advisors: Dean Wilson LLP
Ridgeland House
165 Dyke Road
Brighton
BN3 1TL



The Rockinghorse Team

Alex Marshall

Head of Marketing and Communications

Amanda Hetherington

Corporate Engagement Manager

Donna Holland

Chief Executive

Emma Cunliffe

Supporter Engagement Manager

Hollie TreSize

Community Fundraising Manager

Natalie Cronin

Head of Partnerships and Engagement

Rhian Walsh

Finance and Operations Director

Sarah Phillips

Projects and Operations Manager

Sharon Gearing

Head of Trust Fundraising



01273 330044



enquiries@rockinghorse.org.uk



www.rockinghorse.org.uk

