

**CORINNE BURTON
MEMORIAL TRUST**

A Charitable Trust

**TRUSTEES' REPORT
AND FINANCIAL STATEMENTS**

For the year ended 31 December 2024

CORINNE BURTON MEMORIAL TRUST

CONTENTS

Page

Trust Information	1
Who we are and what we do	2 - 5
Report of the Trustees	6 - 7
Independent Examiner's Report	8
Statement of Financial Activities	9
Statement of Financial Position	10
Notes to the Financial Statements	11 - 12

CORINNE BURTON MEMORIAL TRUST

TRUST INFORMATION

Trustees

Sir Michael John Burton
Laurence Stephen Brass
Norman Anthony Leifer
Lorna Lee Cohen
Jeremy Bard
Judith Frances Kasriel
Joshua Daniel March Cowan

Charity Number 1015586

Principal Address

Suite 301 Stanmore Business and Innovation Centre
Howard Road
Stanmore
Middlesex
HA7 1FW

Accountants/

Independent Examiner

Parker Cavendish
Suite 301 Stanmore Business and Innovation Centre
Howard Road
Stanmore
Middlesex
HA7 1FW

Principal Bankers

Barclays Bank plc
160 Piccadilly
London W1A 2AB

Who we are, and what we do

The Corinne Burton Memorial Trust (CBMT) is the only charity in the UK dedicated exclusively to advancing the practice of Art Psychotherapy in cancer care. The Trust was founded in 1992 by Sir Michael Burton, in memory of his wife Corinne, an artist and illustrator whose own experience of art during her illness inspired this legacy. For more than thirty years, CBMT has pioneered and sustained the role of art therapy in cancer care, helping thousands of patients across the UK.

Our work is built around three pillars:

- **Funding art therapist posts in NHS hospitals:** including long-standing support at St Bartholomew’s Hospital (Barts), and recent expansion to Whipps Cross, the Royal London, Homerton University Hospital, and the Western General Hospital in Edinburgh.
- **Scholarships at Goldsmiths, University of London:** enabling the training over 30 art psychotherapists who have gone on to work in hospitals, hospices, and cancer centres across the UK. The Trust also funds two years of post-graduation employment, ensuring new therapists gain frontline experience with cancer patients.
- **Supporting research and professional development:** we have supported academic and professional development through the publication of seminal texts (including ‘Something Understood: Art Therapy in Cancer Care’ by Camilla Connell and ‘Art Therapy in Cancer Care’, by Prof Diane Waller and Caryl Sibbett) and funding of clinical research into art therapy for cancer care.

Cancer patients often face profound psychological distress alongside their physical treatment. Art therapy provides immediate relief, insight, and resilience—especially for those less responsive to traditional talking therapies. It enables patients to express what cannot always be spoken, to process trauma, and to rediscover connection, purpose, and creativity during the most difficult of times.

CBMT is also committed to equity, diversity, and inclusion (EDI). Cancer affects people from all communities, and our free art therapy services ensure access regardless of background, demographics, or financial means. We strive to reach underserved and underrepresented groups, ensuring that all patients facing cancer have the opportunity to benefit from art therapy.

“I always look forward to therapy sessions as I always come out feeling like a weight had been taken off my back. What I tell my therapist always feels valued and this makes me feel valued. The sessions also make it easier to understand some of my feelings.” - Patient A, after an Art Therapy session

Our Impact

Cancer is a devastating illness, affecting around 367,000 new patients every year in the UK. It is often a physically debilitating disease and there is a strong link between cancer diagnosis and increased depression and anxiety for patients.

- At Barts Health NHS Trust, CBMT’s long-standing support has helped deliver thousands of art therapy sessions. Since 1992, we have delivered more than 6,500 art therapy sessions for thousands of cancer patients at Barts alone. Patient outcomes show significant reductions in anxiety and depression scores, with feedback describing art therapy as “vital” to their ability to cope with cancer treatment.
- Supporting NHS staff as well as patients. CBMT-funded art therapists lead reflective practice and clinical discussion groups, helping nurses and doctors manage the emotional toll of working in cancer care. Research conducted at Barts—the first art therapy clinical trial of its kind in Europe—demonstrated that six weeks of group art therapy significantly reduced burnout, stress, anxiety and depression among healthcare professionals.

- Scholarships and national reach. Since inception, CBMT has supported over 30 scholars at Goldsmiths. In 2024, one scholar used their funding to establish the first-ever art psychotherapy service for teenagers and young adults with cancer at Edinburgh’s Western General Hospital. With further National Lottery funding, this pioneering service is now continuing into 2025.

In recognition of the impact of our work, CBMT was honoured to be invited to Buckingham Palace by Their Majesties The King and Queen in early 2025 for a reception celebrating cancer charities. Out of hundreds of organisations present, CBMT was one of only five selected to showcase its work at the event—a powerful acknowledgement of the Trust’s unique national role.

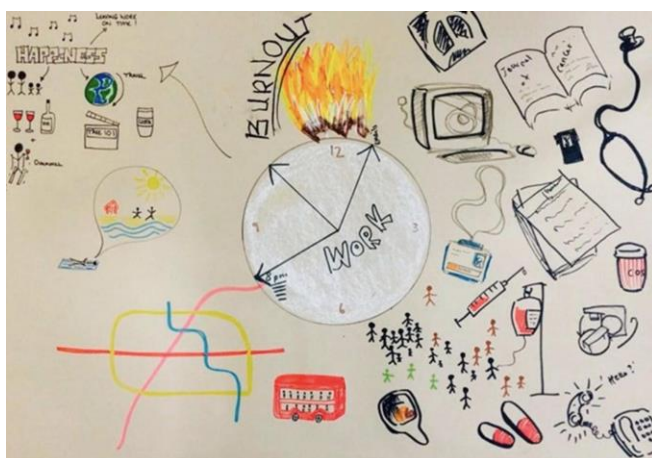


Sir Michael Burton GBE presenting at Buckingham Palace on behalf of the Corinne Burton Memorial Trust and meeting His Majesty King Charles III.

“If it wasn’t for CBMT there wouldn’t be art therapy at Barts; there wouldn’t be the research that is happening on art therapy, and the work with the doctors and nurses at Barts wouldn’t be happening either.”

- Megan Tjasink former Corinne Burton Art Therapist at Barts

Thanks to the generous grants and donations we have received, including in the last year donations from Invesco Cares, Hedley Foundation, Green Hall Foundation, All Aboard, Albert Hunt Trust, Postcode Society Trust, City Bridge Foundation, and London Catalyst, we have been able to both continue and expand our work into additional hospitals.



A piece produced by one of the doctors in the pilot study during an art therapy session.

"I have found art therapy-based workshops and groups to be well placed to support and replenish healthcare professionals. They facilitate connection, reflection, meaning-making; they sustain empathy and foster resilience. The pro-active, self-determining nature of art-making is an invaluable relief in the face of systemic issues that feel beyond their control to change."

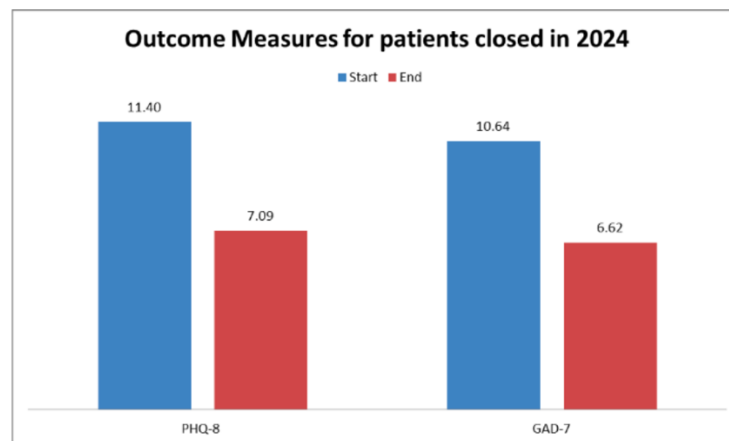
- Megan Tjasink, former Corinne Burton Art Therapist at Barts

Evaluating our work

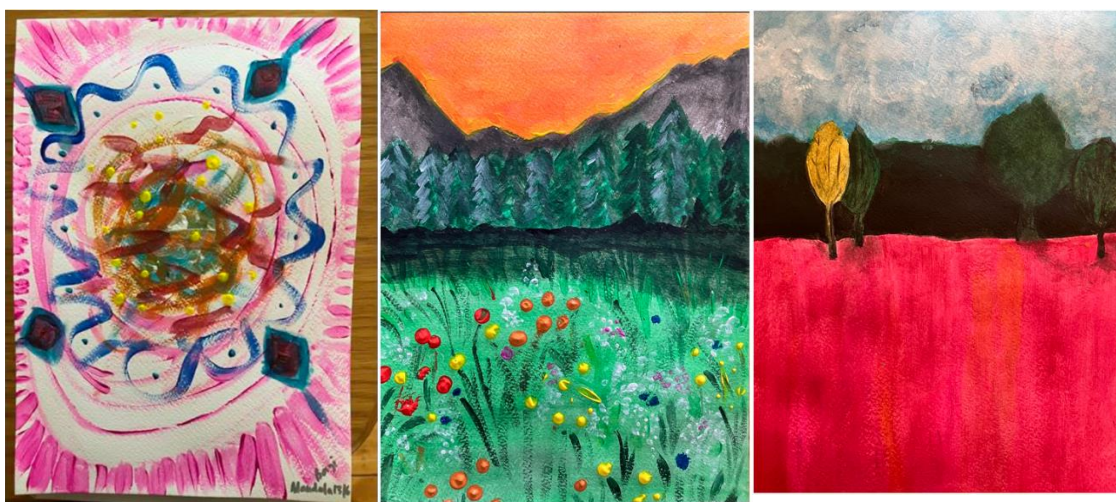
Robust evaluation is central to our mission. Art therapists supported by CBMT use the same outcome measures as NHS Cancer Alliance UK, including the GAD-7 and PHQ-8 psychometric scales to track changes in anxiety and depression.

Patients typically present with scores indicating clinical levels of distress. After 4–6 sessions of art therapy, scores consistently fall back into the normal range—a demonstrable therapeutic benefit. In 2024, patient outcomes at Barts again showed strong improvements, with reductions in both anxiety and depression across the service.

Alongside quantitative measures, we gather rich qualitative feedback. Patients repeatedly describe art therapy as offering “a place of control” in a medical environment where they otherwise feel powerless. Healthcare staff report that art therapy workshops help them “sustain empathy and foster resilience,” enabling them to better care for patients while safeguarding their own wellbeing.



Below are examples of pieces created by patients at Barts during art therapy sessions in 2024.



“My art therapy sessions became a part of my treatment that I had some kind of control over and that had some kind of respect for me. The session was a place where I could take my anger and anxieties and self-pity and guilt and cancer comedy and treatment horror stories to feel however I needed to. I was free to feel how I wanted.”

- A patient’s account of her art therapy sessions.

Our Plans

Looking ahead, CBMT is committed to expanding access to art therapy for cancer patients and their families across the UK.

- Expansion in North East London. Following success at Barts, Whipps Cross, and the Royal London, CBMT is now launching a new art therapist post in partnership with Homerton University Hospital NHS Foundation Trust and Barking, Havering and Redbridge University Hospitals NHS Trust (Queens Hospital). The role will initially be funded for one day per week, with a goal of increasing to two days as further funds are raised.
- Sustaining Edinburgh’s pioneering teenage and young adult service. With initial setup made possible by a CBMT scholarship, and continuation supported by the National Lottery, we aim to secure ongoing funding to embed this innovative programme long-term.
- Investing in future therapists. We will continue to fund new scholarships at Goldsmiths, ensuring a pipeline of highly skilled art therapists dedicated to cancer care.
- Building on national recognition. The visibility gained through our Buckingham Palace showcase offers a platform to deepen partnerships with hospitals, funders, and policymakers, ensuring art therapy becomes a standard part of cancer care provision nationwide.

Through these plans, CBMT will reach more patients, support more staff, and extend Corinne Burton’s legacy of healing through creativity.

CORINNE BURTON MEMORIAL TRUST

TRUSTEES' REPORT FOR THE YEAR ENDED 31 DECEMBER 2024

The Trustees present their report with the financial statements of the charity for the year ended 31 December 2024

The Trustees have adopted the provisions of Accounting and Reporting by Charities: Statement of Recommended Practice applicable to charities preparing their accounts in accordance with the Financial Reporting Standard applicable in the UK and Republic of Ireland (FRS 102) (effective 1 January 2015).

Status and objectives

The Trust was created by a Deed dated 24 November 1992 ("the Trust Deed") in memory of the late Corinne Burton and is a registered charity no. 1015586. It is governed by the Trust Deed and by the Charities Act 2011.

The Trustees have unrestricted powers to apply the trust funds towards the charitable objectives set out in the Trust Deed.

The main object which the Trust pursues is the funding of art therapy, and the training of art therapists, for cancer patients.

There have been no changes in the policies adopted by the Trust during the year.

In January 2019 the Trust Deed was amended such that the total number of Trustees shall not exceed nine.

Results, Activities and Review of the Year

Incoming Resources

The excess of incoming resources as against resources expended in the year is shown on page 8.

Total incoming resources amounted to £46,501 as compared with £71,107 the previous year.

Interest receivable and similar income amounted to £1,311 as compared with £818 for the previous year.

Resources Expended

Total expenditure in the year amounted to £49,215 an increase of £5,488 on the previous year.

Direct charitable expenditure (net of write backs) included in the above amount totalled £40,525, an increase of £4,929 on the previous year's amount.

It is the usual policy of the Trustees to make awards from the accumulated unrestricted fund only, and to write back any provisions to this fund where a write back is deemed necessary.

Assets and Liabilities

The Statement of Financial Position on page 10 of the financial statements shows the financial position of the Trust as at 31 December 2024

Total assets exceeded total liabilities by £36,629 which is represented by the accumulated balances on both capital and income funds. The net assets of the Trust are held in order to meet the Trust's operating expenses, if any, and also to be applied towards the Trust's charitable objectives.

The Trust has made future commitments with regards to the funds held as shown in notes 6 and 7 on page 12.

CORINNE BURTON MEMORIAL TRUST

TRUSTEES' REPORT FOR THE YEAR ENDED 31 DECEMBER 2023 (CONTINUED)

Trustees and Administration

The trustees of the Trust are listed on page 1. The power of appointing new or additional trustees is vested in the settlor, Sir M J Burton. An additional trustee may be appointed at any time but so that the total number of the trustees shall at no time exceed nine.

The Trust's objectives are met in such proportion and manner as the trustees shall in their absolute discretion from time to time determine.

The Trust has no employees. The day to day administration of the Trust is dependent on the services provided by the trustees.

This report was approved by the trustees on 30 September 2025 and signed on their behalf by

..... Sir Michael John Burton

..... Laurence Stephen Brass

..... Norman Anthony Leifer

..... Lorna Lee Cohen

..... Jeremy Bard

..... Judith Frances Kasriel

..... Joshua Daniel March Cowan

Independent Examiner's Report to the Trustees of The Corinne Burton Memorial Trust

I report to the charity trustees on my examination of the accounts of The Corinne Burton Memorial Trust (the Trust) for the year ended 31 December 2024.

Responsibilities and basis of report

As the charity trustees of the Trust you are responsible for the preparation of the accounts in accordance with the requirements of the Charities Act 2011 ('the Act').

I report in respect of my examination of the Trust's accounts carried out under section 145 of the Act and in carrying out my examination I have followed all applicable Directions given by the Charity Commission under section 145(5)(b) of the Act.

Independent examiner's statement

I have completed my examination. I confirm that no material matters have come to my attention in connection with the examination giving me cause to believe that in any material respect:

1. accounting records were not kept in respect of the Trust as required by section 130 of the Act; or
2. the accounts do not accord with those records; or
3. the accounts do not comply with the applicable requirements concerning the form and content of accounts set out in the Charities (Accounts and Reports) Regulations 2008 other than any requirement that the accounts give a true and fair view which is not a matter considered as part of an independent examination.

I have no concerns and have come across no other matters in connection with the examination to which attention should be drawn in this report in order to enable a proper understanding of the accounts to be reached.

Mervyn Beth FCCA
Parker Cavendish
Chartered Accountants
Suite 301 Stanmore Business and Innovation Centre
Howard Road
Stanmore
Middlesex
HA7 1FW

Date: 30 September 2025

CORINNE BURTON MEMORIAL TRUST

**STATEMENT OF FINANCIAL ACTIVITIES
FOR THE YEAR ENDED 31 DECEMBER 2024**

		Unrestricted Income Fund	
	NOTES	2024 £	2023 £
INCOMING RESOURCES			
General donations and Activities (net)	3	45,190	69,283
Bank deposit interest received (gross)		1,311	818
Tax refunds		-	1,006
		<hr/>	<hr/>
TOTAL INCOMING RESOURCES		46,501	71,107
		<hr/>	<hr/>
RESOURCES EXPENDED			
Cost of Generating Funds			
Activity and fundraising costs		7,370	6,811
Charitable Expenditure			
Donations and grants- Less written back	4	40,525	35,596
Governance costs	5	1,320	1,320
		<hr/>	<hr/>
TOTAL RESOURCES EXPENDED		49,215	43,727
		<hr/>	<hr/>
NET MOVEMENTS IN FUNDS		(2,714)	27,380
INCOME FUND BALANCE BROUGHT FORWARD AT 1 JANUARY 2024			
		39,243	11,863
		<hr/>	<hr/>
INCOME BALANCE CARRIED FORWARD AT 31 DECEMBER 2024			
		36,529	39,243
		<hr/>	<hr/>
CAPITAL FUND BALANCE BROUGHT FORWARD AT 1 JANUARY 2024 AND CARRIED FORWARD AT 31 DECEMBER 2024			
		100	100
		<hr/>	<hr/>

CORINNE BURTON MEMORIAL TRUST
STATEMENT OF FINANCIAL POSITION
AS AT 31 DECEMBER 2024

	Notes	2024 Unrestricted Fund £	2023 Unrestricted Fund £
CURRENT ASSETS			
Cash at bank		131,141	129,660
Debtors	8	-	1,006
		-----	-----
		131,141	130,666
Creditors: Amounts falling due within one year	6	(39,633)	(47,056)
		-----	-----
NET CURRENT ASSETS		91,508	51,657
		-----	-----
Creditors: Amounts falling due after more than one year	7	(54,879)	(44,267)
		-----	-----
NET ASSETS		36,629	39,343
		=====	=====
TRUST FUNDS			
CAPITAL FUND: expenditure endowment		100	100
INCOME FUND: unrestricted		36,529	39,243
		-----	-----
		36,629	39,343
		=====	=====

Approved by the Trustees on 30 September 2025

..... Sir Michael John Burton Laurence Stephen Brass
..... Norman Anthony Leifer Judith Frances Kasriel
.....Lorna Lee Cohen Jeremy Bard
..... Joshua Daniel March Cowan	

The notes on pages 11 and 12 form an integral part of these financial statements.

CORINNE BURTON MEMORIAL TRUST

NOTES TO THE FINANCIAL STATEMENTS FOR THE YEAR ENDED 31 DECEMBER 2024

1. ACCOUNTING POLICIES

a) Basis of preparing the financial statements

The financial statements of the charity which is a public benefit entity under FRS 102, have been prepared in accordance with the Charities SORP (FRS 102) 'Accounting and Reporting by Charities: Statement of Recommended Practice applicable to charities preparing their accounts in accordance with the Financial Reporting Standard applicable in the UK and Republic of Ireland (FRS 102) (effective 1 January 2015)', Financial Reporting Standard applicable in the UK and Republic of Ireland EFA, and the Charities Act 2011. The financial statements have been prepared under the historical cost convention.

Financial reporting standard 102 - reduced disclosure exemptions

The charity has taken advantage of the following disclosure exemptions in preparing these financial statements, as permitted by FRS 102 'The Financial Reporting Standard applicable in the UK and Republic of Ireland':

The requirements of Section 7 Statement of Cash Flows;

The requirement of Section 3 Financial Statement Presentation paragraph 3.17(d);

The requirements of Section 11 Financial Instruments paragraphs 11.41(b), 11.41(c), 11.41(e), 11.41(f), 11.42, 11.44, 11.45, 11.47, 11.48(a)(iii), 11.48(a)(iv), 11.48(b) and 11.48(c);

The requirements of Section 12 Other Financial Instruments paragraphs 12.26, 12.27, 12.29(a), 12.29(b) and 12.29A;

The requirement of Section 33 Related Party Disclosures paragraph 33.7.

The principal accounting policies adopted in the preparation of the financial statements are set out below and have remained unchanged from the previous year/period, and also have been consistently applied within the same accounts.

b) Incoming Resources

All incoming resources are included in the Statement of Financial Activities when the charity is entitled to the income and the amount can be quantified with reasonable accuracy. The following specific policy is applied to particular categories of income:

Donations received are accounted for on a receivable basis and, where appropriate, include tax deducted at source which is recoverable by the Trust.

c) Resources Expended

Expenditure is recognised on an accruals basis as a liability is incurred. Expenditure includes any VAT which cannot be fully recovered and is reported as part of the expenditure to which it relates

Donations and grants made during the year have been fully provided in the accounts where amounts have been made covering more than one year.

d) Taxation

The charity is exempt from tax on its charitable activities

**CORINNE BURTON MEMORIAL TRUST
NOTES TO THE FINANCIAL STATEMENTS
FOR THE YEAR ENDED 31 DECEMBER 2024 (CONTINUED)**

2. FUND ACCOUNTING

The unrestricted income fund consists of funds to be used for the purpose of meeting the Trust's charitable objectives and the ongoing overheads of the Trust.

The capital endowment fund is attributable to the original amount settled on the charity. Under the terms of the Deed of Settlement, the endowment is expendable at the discretion of the Trustees on expenditure which meets the charitable objectives of the Trust.

3. GENERAL DONATIONS RECEIVED

General donations include donations received from the following:

City Bridge Foundation
Invesco Cares
Hedley Foundation
Green Hall Foundation
All Aboard
Albert Hunt Trust
Postcode Society Trust
London Catalyst
Pauline and Harold Berman Trust
Julius Silman Charitable Trust

4. DONATIONS AND GRANTS	2024	2023
	£	£
a) Goldsmiths' College		
Donation to cover the cost of art Therapy studentships ('The Corinne Burton Art Therapy Studentships')	21,868	19,999
b) St Bartholomew's Hospital (Barts),		
Donation to cover the cost of an art therapist (‘The Corinne Burton Art Therapist’)	<u>18,657</u>	<u>15,597</u>
	40,525	35,596
5. GOVERNANCE COSTS	<u> </u>	<u> </u>
Accountancy fees	1,320	1,020
6. CREDITORS:	<u> </u>	<u> </u>
Amounts falling due within one year		
Provision for charitable commitments	39,178	46,783
Accrued expenses	455	455
	<u>39,633</u>	<u>47,238</u>
7. CREDITORS:	<u> </u>	<u> </u>
Amounts falling due after more than one year		
Provision for charitable commitments	55,732	39,694
8. DEBTORS:	<u> </u>	<u> </u>
Tax refunds	-	-