



THE LAPAL CANAL TRUST

COMPANY LIMITED BY GUARANTEE NO.: 2721675
REGISTERED CHARITY NO: 1013845

REPORT AND FINANCIAL STATEMENTS

FOR THE YEAR ENDED 31st DECEMBER 2024

CONTENTS

	Page
Company information	2
Report of the Directors	3- 5
Independent Examiner's Report	6
Statement of Financial Activities	7
Balance Sheet	8
Notes to the Financial statements	9 - 10

THE LAPAL CANAL TRUST

COMPANY INFORMATION

FOR THE YEAR ENDED 31st DECEMBER 2024

Chairman	Dr Andrew Hardie
CEO	Hugh Humphreys, OBE
Treasurer	Michael Payne FCA
Membership Secretary	Dr Tony Whateley

REGISTERED OFFICE:	18 St Georges Close Birmingham B15 3TP
--------------------	--

REGISTERED NUMBERS:	Company: 2721675 Charity: 1013845
---------------------	--------------------------------------

BANKER:	HSBC 1 Great Cornbow Halesowen West Midlands B63 3AD
---------	--

LAWYER	Gowling WLG (UK) LLP Two Snowhill, Birmingham, B4 6WR,
--------	--

INDEPENDENT EXAMINER	L E Parkes FCA Chartered Accountant Birmingham
----------------------	--

THE LAPAL CANAL TRUST

REPORT AND FINANCIAL STATEMENTS FOR THE YEAR ENDED 31 DECEMBER 2024

REPORT OF THE DIRECTORS

Each year the Trustees are required to present a formal report. The Charity is constituted as a company registered in England and limited by guarantee.

Charity Commission Registration Number: 1013845

Company Registration Number: 2721675

Registered Office: 18 St Georges Close, Birmingham, B15 3TP

The Directors present their report with the financial statements of the company for the year ended 31st December 2023. The Directors during the year under review were:

Chairman- Dr Andrew Hardie CEO- Hugh Humphreys, OBE
 Treasurer Michael Payne FCA Membership Secretary Dr Tony Whateley
 Peter Fisher, Denis Pike, David Struckett, Paul Smith

The company is limited by guarantee and therefore no Director has any interest in the share capital of the company. The liability of the Members in the event of the company being wound up is limited to a sum not exceeding £1.

The Directors are responsible for financial controls and accounts; for developing and overseeing a reserves policy; for ensuring that all procedures and policies adhere to their legal requirements for reviewing risk management of the organisation; to ensure all aspects of charity and company law are fully and properly adhered to and generally protect the charity's property.

OBJECTIVES AND ACTIVITIES

The main objective as shown in the Memorandum and Articles of Association is: The promotion of the restoration and conservation of the Dudley No. 2 Canal from Halesowen to the Worcester and Birmingham canal at Selly Oak, Birmingham

CHAIRMAN'S REPORT

2024 was a good year for the Trust. Our volunteers have been busy with clearing scrub and litter picking, focused on the stretches of canal in Weoley Castle, Selly Oak Park and the Leasowes. We particularly enjoyed the opportunity to talk to the local community at the Selly Oak Festival and during our annual Walk The Line event.

Our priority is to obtain National Lottery Heritage Fund support for opening the canal across Sainsbury's car park. We are calling this stretch Battery Wharf. It leads to Harborne Wharf the other side of Harborne Lane. We applied for this funding of approximately £3m in February 2024, our expression of interest was accepted, but our detailed 20 page application with many supporting documents was not. We are invited to resubmit, the delay from Covid and the rejection of our application means that we have an issue with obtaining the £724k available to the canal procurement organisation provided the work starts



by November 2025. Our Lawyer Gowlings (who generously does the work Pro Bono) has drawn up a deed of variation to extend the agreement by two years. We remain hopeful that this will be agreed and were fortunate in meeting the local MP who is very supportive. We are busy preparing and strengthening our Trust. Recently we have been joined by several new member, Barry has greatly improved our Web site, everything now works. Mark has helped to improve how we manage information and he has written a description which is in our latest Newsletter. Justyna has joined us as Development Manager to focus initially on Fund raising and then to help with other tasks. We will discuss with the Heritage Lottery Fund whether our chances of financial support will be enhanced if our next application also includes the canal across Selly Oak park. A more attractive proposition but requiring more financial support. If we fail to get the deed of variation agreed they we will have to raise the match funding contribution from other funders.

Our Newsletter for Spring 2025 is available on request, members have either been sent an electronic or printed copy. The Newsletter describes our projects. Whitehouse Wharf is a testament to our ability to fund and manage complex construction projects, and is widely appreciated. We hope to be make progress on reopening the Tunnel under Harborne Lane using IWA volunteers.

Our volunteers continue to do excellent work at the other end of the canal aided by the Coombeswood Canal Trust

During the year we received a grant of £15,000 from the National Lottery Community Fund this has allowed us to continues to provide boat trips for the disadvantaged and has the huge benefit of wide community engagement. We are aided by our partner society Worcester Birmingham and Droitwich Canal Society. We continue to provide monthly trips for SENS; the work has been recognised by SENSE with a certificate as a leading community partner.

We are grateful to the members who agreed at the AGM to be Officers, Directors and Trustees.

PUBLIC BENEFIT

The Trustees are aware of the Charity Commission's guidance on public benefit and consider that the work of the Trust is in line with that guidance, given that the reopening of the Dudley No. 2 canal will provide enhanced outdoorleisure activities to the general public.

RESERVES POLICY

In line with guidance issued by the Charity Commission, the Trustees have reviewed the Charity's need for reserves. At 31st December 2023 reserves amounted to £212,360. The Trustees believe this to be adequate to ensure the effective and efficient of the operation of the Charity. Restricted reserves consists of donations and grants given specifically for the Restoration Appeal Fund.

STATEMENT OF TRUSTEES' RESPONSIBILITIES

Company law requires the Trustees to prepare accounts that give a true and fair view of the state of affairs of the charitable company at the end of the financial year and of the charitable company's surplus or deficit for the year. In doing so, the Trustees are required to:

- Select suitable accounting policies and apply them consistently;
- Make judgements and estimates that are reasonable and prudent;
- State whether applicable accounting standards and statements of recommended practice have been followed, subject to any material departures disclosed and explained in the accounts; and
- Prepare the accounts on the going concern basis unless it is inappropriate to presume that the charity will continue in business.

The Trustees are responsible for maintaining proper accounting records which disclose, with reasonable accuracy at any time, the financial position of the charitable company and which enable them to ensure that the accounts comply with the Companies Act 2006. The Trustees are also responsible for safeguarding the assets of the charitable company and hence for taking reasonable steps for the prevention and detection of fraud and

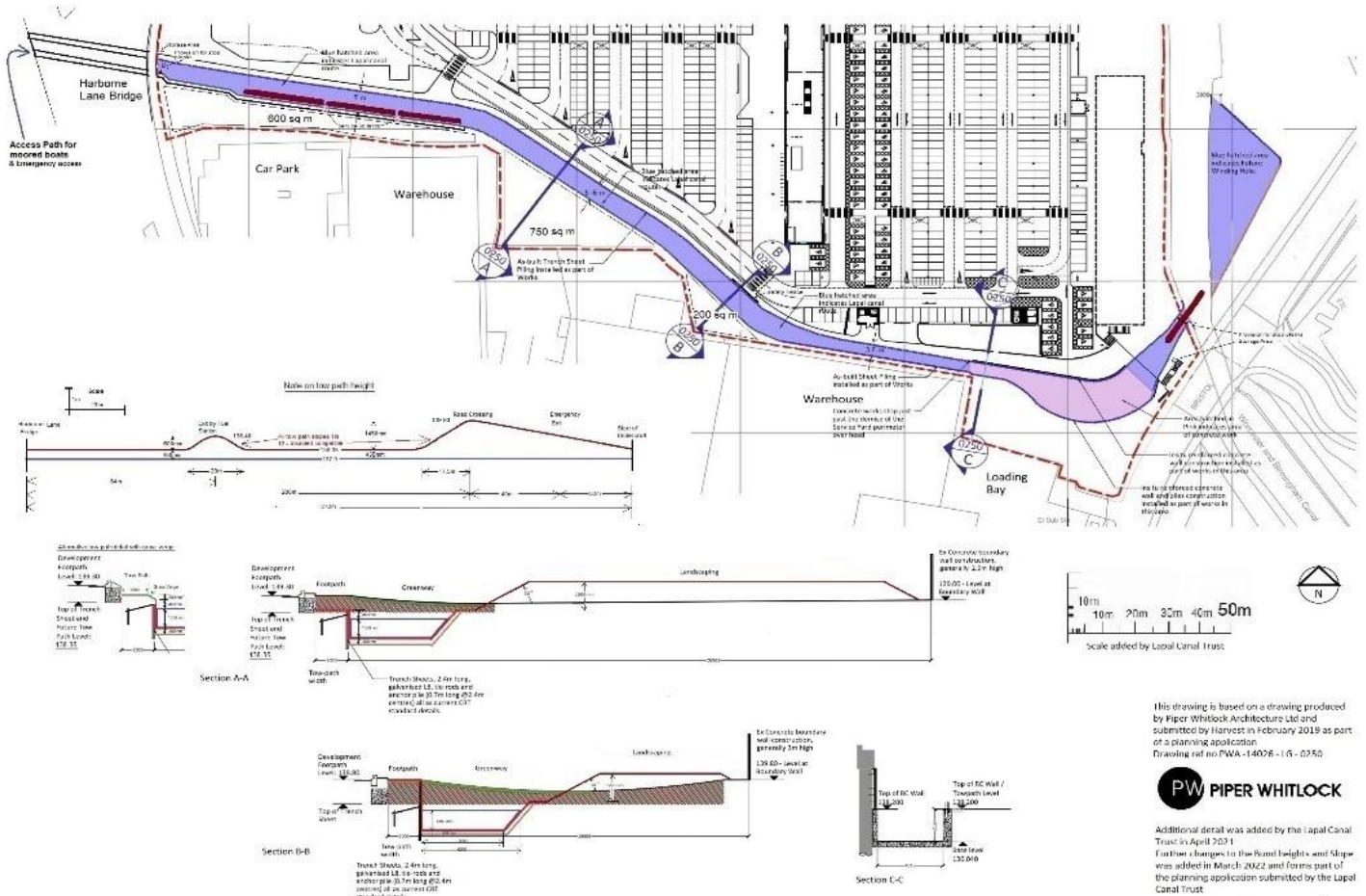
other irregularities.

Signed on behalf of the Board

Michael Payne FCA
Treasurer
1st June 2025

Dr Andrew Hardie
Chairman
1st June 2025

Plan of canal by Sainsbury's (Battery Wharf)



This drawing is based on a drawing produced by Piper Whitlock Architecture Ltd and submitted by Harvest in February 2019 as part of a planning application Drawing ref no PWA-14026-1-G-0250



Additional detail was added by the Lopal Canal Trust in April 2021
 Further changes to the Runoff Heights and Slope was added in March 2022 and forms part of the planning application submitted by the Lopal Canal Trust

THE LAPAL CANAL TRUST**INDEPENDENT EXAMINER'S REPORT****To the Trustees of The Lapal Canal Trust Limited**

I report to the charity trustees on my examination of the accounts of The Lapal Canal Trust Limited (the company) for the year ended 31 December 2024 which are set out on pages 7 to 10.

Responsibilities and basis of report

As the charity's trustees of the Company and also directors for the purpose of company law you are responsible for the preparation of the accounts in accordance with the requirements of the Companies Act 2006 ("the 2006 Act").

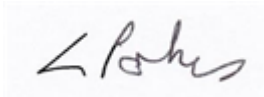
Having satisfied myself that the accounts of the Company are not required to be audited under Part 16 of the 2006 Act and are eligible for independent examination, I report in respect of my examination of your charity's accounts as carried out under section 145 of the Charities Act 2011 ("the 2011 Act"). In carrying out my examination I have followed the Directions given by the Charity Commission under section 145(5) of the 2011 Act.

Independent examiner's statement

I have completed my examination. I confirm that no matters have come to my attention in connection with the examination giving me cause to believe:

- 1 accounting records were not kept in respect of the Company as required by section 386 of the 2006 Act, or
- 2 the accounts do not accord with those records, or
- 3 the accounts do not comply with the accounting requirements of section 396 of the 2006 Act other than any requirement that the accounts give a "true and fair view" which is not a matter considered as part of an independent examination, or
- 4 the accounts have not been prepared in accordance with the methods and principles of the Statement of Recommended Practice for accounting and reporting by charities applicable to charities preparing their accounts in accordance with the Financial Reporting Standard applicable in the UK and the Republic of Ireland (FRS 102).

I have no concerns and have come across no other matters in connection with my examination to which attention should be drawn in this report in order to enable a proper understanding of the accounts to be reached.



L E Parkes FCA
Chartered
Accountant
Birmingham
1st July 2025

THE LAPAL CANAL TRUST

BALANCE SHEET									
					2024	2024	2024	2023	2023
					Unrestricted	Restricted	Total	Unrestricted	Restricted
			Notes		£	£	£	£	£
Current Assets									
Bank balances					20,963	207,875	228,838	16,624	194,645
Debtors (VAT)					621		621	579	-
Prepayments					512		512	512	
					22,096	207,875	229,971	17,715	194,645
									212,360
Current Liabilities									
Bank balances							-		-
					22,096	207,875	229,971	17,715	194,645
									212,360
Financed by:									
Unrestricted Funds		6			22,096		22,096	17,715	
Restricted Funds		6				207,875	207,875		194,645
					22,096	207,875	229,971	17,715	194,645
									212,360

For the year ended 31 December 2024, the company was entitled to exemption from audit under section 477 of the Companies Act 2006 relating to small companies. The Members have not required the company to obtain an audit of its accounts in accordance with section 476 of the Companies Act 2006.

The directors acknowledge their responsibilities for complying with the requirements of the Act with respect to accounting records and preparation of accounts.

Approved by the directors on 1 July 2025 and signed by –



Michael Payne FCA
Treasurer
1st July 2025



Dr Andrew Hardie
Chairman
1st July 2025

NOTES ON ACCOUNTS FOR THE YEAR ENDED 31 DECEMBER 2024

1 Accounting Policies

Basis of Accounting

The financial statements have been prepared in accordance with the accounting policies set out below and comply with the charity's governing document, the Companies Act 2006, the Charities Act 2011 and the SORP (FRS 102) Accounting and Reporting by Charities: Statement of Recommended Practice applicable to charities. The charity is a company limited by guarantee and is a public entity as defined by FRS102

Going Concern Basis

The trustees have considered the requirements to comment on the going concern basis and confirm that resources are sufficient to continue operations for the foreseeable future.

Funds Accounting

Unrestricted funds are available for use at the discretion of the trustees and in furtherance of the general activities of the charity.

2 Prepayments – Insurance paid in advance

3 Restricted funds are:

- a) Restoration Appeal;
- b) Bridge Towpath Appeal;
- c) Community Boat fund granted by the National Lottery Funds for All, to provide canal boat trips for the elderly, disabled and schools

Income

Donations and legacies are accounted for when received by the Trust . Other income is accounted for on an accruals basis as far as it is possible to do so. Income included Income Tax recoverable, when applicable

Gifts in kind

The charity receives the benefit of work carried out by volunteers and receives the use of the facility and equipment without charge. No value is placed on these items, except where the benefit extends over several periods in which case they are valued and included in the balance sheet at a reasonable valuation.

Taxation

As a registered charity, the Trust benefits from Rates relief and is generally exempt from . Corporation Tax, Income Tax and Capital Gains Tax. The Trust is registered for VAT, Registration Number 344343415

4 Debtors

Debtors represents Value Added Tax recoverable from HMRC

THE LAPAL CNAL TRUST

5 CHARITABLE ACTIVITIES

	2024	2024	2024	2023	2023	2023
	Unrestricted	Restricted	Total	Unrestricted	Restricted	Total
	£	£	£	£	£	£
Website fees	141		141	141	-	141
Printing	130		130	387		387
WB & DCS Membership			-	30	-	30
IWA Indemnity Insurance	512		512	769	-	769
GBCC Membership			-	200	-	200
IWA Corporate Membership	73		73	69	-	69
PayPal fees	7		7	8	-	8
Companies House filing fee	13		13	13	-	13
Bank charges	61		61	67	-	67
Information Commissioner fee	35		35	35	-	35
Total Support Costs	972	-	972	1,719	-	1,719
Professional fees			-			-
CRT legal fees			-	-	5,619	5,619
Other fees	200		200			-
Winding hole build fees			-		35,738	35,738
Other expenditure						
Computer	277		277			-
Stonehouse Gang	1,200		1,200			-
WRG Materials	3,734		3,734	3,624	-	3,624
Community boats		2,860	2,860	-	2,905	2,905
Direct Expenditure	5,411	2,860	8,271	3,624	44,262	47,886
Total Charitable Expenditure	6,383	2,860	9,243	5,343	44,262	49,605

6 FUNDS ANALYSIS

	01.01.2024	Income	Expenditure	Transfers	31.12.2024
	£	£	£	£	£
Restoration Appeal	189,945	1,000			190,945
Community Boats	2,857	15,000	- 2,860		14,997
Bridge Towpath Appeal	1,843	90			1,933
Restricted Funds	194,645	16,090	- 2,860		207,875
Unrestricted Funds	17,715	10,764	- 6,383		22,096
	212,360	26,854	- 9,243	-	229,971
Previous Year					
	01.01.2023	Income	Expenditure	Transfers	31.12.2023
	£	£	£	£	£
Restoration Appeal	230,473	829	- 41,357		189,945
Community Boats Grant	5,762		- 2,905		2,857
Bridge Towpath Appeal		1,843			1,843
Restricted Funds	236,235	2,672	- 44,262		194,645
Unrestricted Funds	16,234	6,824	- 5,343		17,715
	252,469	9,496	- 49,605	-	212,360