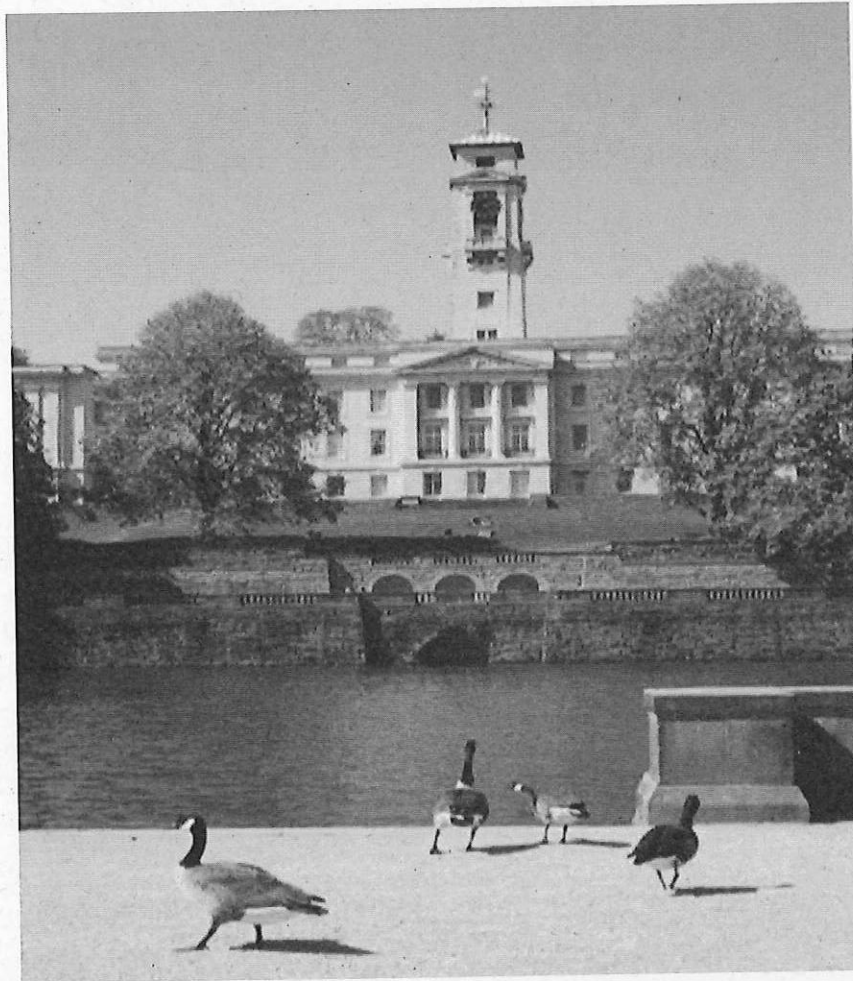


HIGHFIELDS LEISURE PARK TRUST



Annual Report for the year ended 31 March 2022

Registered Charity number 1006603

CONTENTS

Page

3	Report of the Trustees for the year ended 31st March 2022
3	Objectives and Activities for the Public Benefit
4-5	Achievements and Performance
6	Financial Review
7-8	Plans for Future Periods
9-12	Structure, Governance and Management
13-14	Reference and Administrative Information
15-16	The Financial Statements
17-20	Notes to the Financial Statements
21	Independent Examiners Report

REPORT OF THE TRUSTEE FOR THE YEAR ENDED 31ST MARCH 2022

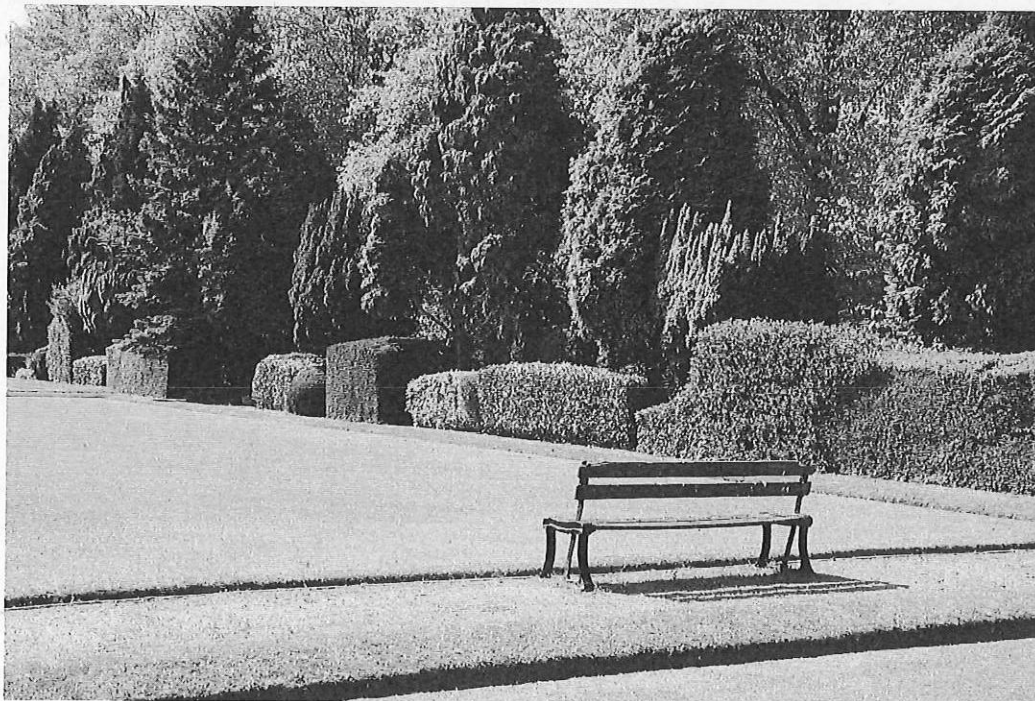
The trustees present their annual report and financial statements of the charity for the year ended 31st March 2022. The financial statements have been prepared in accordance with the accounting policies set out in note 1 to the accounts and comply with the charity's trust deed, the Charities Act 2011 and Accounting and Reporting by Charities: Statement of Recommended Practice applicable to charities preparing their accounts in accordance with the Financial Reporting Standard applicable in the UK and Republic of Ireland published on 16 July 2014.

OBJECTIVES AND ACTIVITIES FOR THE PUBLIC BENEFIT

Highfields Leisure Park Trust is a charity of which the Council is sole trustee and is responsible for the general control and management of the charity. These responsibilities are delegated to the Trusts and Charities Committee by full Council. The Trusts and Charities Committee give their time freely and receive no remuneration or other financial benefits.

Objective

The primary objective of the charity is to provide public recreation and pleasure grounds for the people of Nottingham forever. To achieve this, a programme of ongoing maintenance of grounds and equipment is completed each year. This ensures the provision of well maintained, good quality public recreation facilities. The Trustee confirm they have referred to the Charity Commission guidance on public benefit when reviewing the aims and objectives and when setting plans for the future. Highfields is open to the public at large assuring public benefit on an open access basis. There are no restrictions regarding the members of public who may use Highfields. No fees are charged for access to the park but some fees are charged for various concessions within the park.



ACHIEVEMENTS AND PERFORMANCE

Highfields Leisure Park Trust is responsible for providing leisure, recreation and sporting opportunities at Highfields Park for the benefit of Nottingham residents. Improvements on the site in the last year have included:

Performance Report (April 2021 - March 2022)

Objective	Action	Outcome
Sport, Recreation & Events	<p>The £5.2m Heritage Lottery Funded park restoration project began in summer 2017 and completed in August 2018. Work has continued on some final and additional restoration items, including:</p> <ul style="list-style-type: none"> - Creation of an artistic bench using material from and representing the Maid Marian pleasure cruise boat. - Target hardening of site western end of the park. - Improvements / replacements to play areas - Minor stonework capping repairs around the lake edges. - Ongoing railing repainting by Probation Service attendees. 	<p>More people enjoying the park and its activities.</p> <p>Improved physical activity and health and wellbeing</p>
	<p>The site offered a good range of quality activities throughout the year, which includes boating, Adventure Golf, winter and summer pitch facilities for football, archery and lacrosse, as well as croquet being held on site. There were a number of events, both sporting and community, on Highfields Park, including the, Nottingham University led Chinese New Year event, bat walks and conservation awareness sessions</p>	
	<p>The Adventure Golf & Boating activities were all open this year</p>	
	<p>Stand-up paddleboard, yoga and others (e.g. University clubs) also regularly use the lake.</p>	
	<p>A new Park Ranger has been on site since November 2021 and spent the winter months introducing herself to all the organisations and groups on site as well setting up a community gardening group, a Japanese garden group behind the cascade, and a community payback scheme</p>	
	<p>New lease completed with Nottingham croquet club signed and in place.</p>	
Community Access	<p>Nottingham High School have completed the construction of a new artificial hockey pitch on the Highfields sports ground site and it is now in full use.</p>	

	<p>Park Ranger partnership working with the University of Nottingham and Nottingham Lakeside Arts (plans for 2023/24 are being discussed).</p> <p>A FCC bid for the new Serenity Garden memorial garden next to the old paddling pool, in partnership with Forever Stars baby loss charity, was successful and work started on the £108,000 garden in 2020/21. Replacement of trees dead / vandalised The Serenity Garden was officially opened in July 2021</p>	
Well Maintained	<p>A 10 year maintenance and management plan (MMP) supported the HLF bid and details how the park is maintained following the restoration project; this is updated annually.</p> <p>Maintenance programmes have been completed in order to ensure the formal areas and woodlands are kept in an attractive and favourable condition.</p> <p>Recruitment of a permanent HLF-funded Head Gardener was successful.</p> <p>The partnership with the Estates and Grounds Maintenance Manager for the University of Nottingham campus remains strong.</p> <p>Works to the rhododendrons continue</p>	Safe, well presented and park users have more pride and ownership
Sustainability – Environmental	<p>Continued tree planting programme on site via memorial tree plantings.</p> <p>Continued upgrade of parks infrastructure via the memorial bench scheme. Memorial bench restoration continues to be a large focus and the new Heritage green colour is appearing all over the park as existing benches are refurbished and new ones are purchased by sponsors.</p> <p>Volunteering hours were significantly impacted during the covid19 pandemic but volunteering activities are returning to the park with the Park Ranger using specific site projects to encourage a wider range of volunteers.</p> <p>ERDF-funded creation of pond and installation of boardwalk across the old paddling pool to link to the new Serenity Garden.</p>	<p>Improved environmental sustainability</p> <p>Create new habitats.</p>
Sustainability - Financial	<p>The Christmas Company did not hold the event in December 2021 other income from site based concessions was reduced during the year.</p> <p>New concession agreement with Wired on Wheels (coffee and cake van)</p> <p>Cloud9 lease the boathouse for storage.</p>	More financially sustainable and value for money trust accounts.

FINANCIAL REVIEW

The Council provides grant monies to finance the annual operating deficit of the trust. In 2021/22 this amounted to £117,473 (2020/21 £111,787) which is An increase of £5,686 compared to the previous financial year. This grant supports the key objectives of the Trust.

All transactions relating to Highfields Leisure Park Trust are subject to the same financial regulations and procedures as those relating to land and property held by the Council. Since May 2011 the Trusts and Charities Committee has replaced the Executive Board for the purpose of approving transactions.

Policy on Reserves

The Council is a key partner in delivering the objectives of the Trust and has shown a continued commitment to meet any net expenditure in the year. It is therefore not felt appropriate for the Trust to hold reserves.

Risk Management

The Highfields Leisure Park Trust adopts the Council's risk management policy as appropriate.

The following statement best sums up the purpose of risk management:

"To ensure that the Council is not risk averse and takes or faces risks knowingly and manages them appropriately."

The Trustee is committed to a programme of risk management to protect the charity's assets. A risk register is held which identifies the keys risks and the measures in place to mitigate such risks. Procedures are also in place to ensure that appropriate advice and support is provided to Trusts and Charities Committee as and when required.

Insurances

Highfields Leisure Park Trust is covered by the Council's insurance policy. The Council pays the premium.

PLANS FOR FUTURE PERIODS (April 2022 - March 2023)

Objective	Action	Timetable for Delivery	Outcome
Sport, Recreation & Events	Continue to deliver partnership events with Nottingham Lakeside Arts and the University of Nottingham (subject to Covid-19 restrictions).	Ongoing throughout the year.	Improved physical activity and health and wellbeing
	Ongoing delivery of the Activity Plan by the Park Ranger and Partners, including events, education and volunteering		Increase visitors to the park Raised profile of the park Introduce different audiences to the park that may not have visited the site prior to events
Community Access	Continue to deliver education in partnership with Nottingham Lakeside Arts and the University of Nottingham based on the NCC Park Ranger Education programme (subject to Covid-19 restrictions).	Annually available	Improved education Increase in user groups using site Bat walks, creating green recycling opportunities I.e. Increasing events offered eg. Xmas wreath making
	Diverse sports on site attracts diverse interest.	Annually available	
	Following the completion and opening of the "Serenity Garden" in July 2021 a Service Level Agreement and remedial works will be completed before Spring 2022.	Spring 2022	Bring new users to the park. Redevelop an unused area. sustain community stewardship
Well Maintained	Ongoing work on rhododendrons and interpreting the Maid Marian.	2021/22	Safe, well presented and park users have more pride and ownership eg. Japanese gardeners / general park improvement volunteers - plus the introduction of park improvement days for litter picking etc.
	Develop and continue to update a new 10 year Maintenance plan.	In place & approved by the HLF.	
	Replacement of vehicle and pedestrian bridge on Highfields Sports ground side	Spring 2022	
Sustainability - Environmental	Continue to carry out volunteer and student task days on site.	Ongoing	Improved environmental sustainability
	Continue to improve areas of the park for wildlife as part of practical education sessions within the new activity plan.	Ongoing	Empowers local users with their local park. Create new habitats. i.e. meadow creation Make use of overgrown, unused areas of the park.

Sustainability - Financial	The Christmas Company will return to host an event in 2022 and the funds achieved will help to make improvements and maintain the park.	December 2021	More financially sustainable and value for money trust accounts
	Continued partnership working with Colwick Park Lifeguards who lease the boathouse for storage. (Cloud9)	Ongoing	Continued successful partnerships that help to improve the types and standard of activities offered @ Highfields Park
	Continued partnership working with Cloud9 Pursuits who manage the boating lake.	Ongoing	
	Continued partnership working with Showcase Greens Ltd who manage the Adventure Golf.	Ongoing	

STRUCTURE, GOVERNANCE AND MANAGEMENT

In order to understand the objectives of the charity it is important to consider the history of the trust and how Nottingham City Council has managed and developed Highfields Park as a first class facility for sport, leisure and recreation since the creation of the trust.

The Sir Jesse Boot Memorial Scheme was created by the 1920 Indenture.

Between 1919 and 1920, Sir Jesse acquired a mansion house called Highfields together with adjoining land lying west of the city of Nottingham. By Memorandum of Agreement dated 9 December 1921, it was agreed by Sir Jesse and the trustees of the 1920 indenture that the Highfields Estate had been purchased by Sir Jesse as agent for and on behalf of the Sir Jesse Boot Memorial Scheme.

It was also agreed that the trustees would pay Sir Jesse £57,000 out of the trust fund as reimbursement of the costs of the purchase. In return Sir Jesse would convey the Highfields Estate to the trustees or as they might direct.

By an indenture dated 1 November 1923 made between Sir Jesse, the trustees of the 1920 indenture and the Council, Sir Jesse, at the request of the trustees, conveyed part of the Highfields Estate to the Council to hold the same "for the purpose of public recreation and pleasure grounds for the people of the City of Nottingham forever" this created the present trust. By an indenture of the same date made between Sir Jesse, the trustees of the 1920 indenture and the University College of Nottingham ("the University"), the rest of the Highfields Estate (including the Manor House) was conveyed to the University.

It appears the memorial scheme was wound up in 1925.

The land conveyed to the Council was for the most part laid out as a park, although some areas were not so laid out and remained derelict. The land lies to the south of the University and to the north of the railway. It is divided along the east-west axis by University Boulevard.

To the north of University Boulevard is a large boating lake with lakeside walks, formal gardens and fine turf sports facilities including putting, bowls and croquet greens. Plantations of rhododendrons and mature trees provide a unique natural backdrop to enhance the park setting.



To the south of University Boulevard are playing fields, for winter and summer outdoor sports, together with a running track.

Over the years there have been a number of dispositions of freehold interest in the land. These include various land exchanges with the University, the acquiring of land at Beeston Sidings immediately to the south of Highfields Park and the conveyance of land to Nottinghamshire County Council for road widening purposes.

In addition, the Council as Trustee, over this time, has granted a number of leases (or licences) of land subject to the 1923 Indenture. For example, the site of the former Highfields Lido to the University - to develop the area as an art centre. Also included are lease agreements with the trustees of Highfields Hockey Club for the former sports pavilion tea-rooms. A lease has also been agreed with the croquet club for use of the croquet pavilion and four lawns and to the University for the running track and associated facilities.

Part of the Trust land to the south of University Boulevard was developed during the early 1980's as a Science Park with low-density buildings for light industrial and scientific office use. In December 1998, the Science Park was exchanged for Council land at Beeston sidings, which had been laid out for sporting and recreational activities.



Objectives of Charity

The provision of public recreation and pleasure grounds for the people of the City of Nottingham forever.

In order to achieve this, a programme of ongoing maintenance of grounds and equipment is completed each year. This ensures the provision of well-maintained public recreation and pleasure grounds.

Trustee's selection methods

Trustees' selection methods

Nottingham City Council (NCC) elected members are the sole Trustees. NCC has elected members who are elected on a 4 year cycle. The following table details the councillors / trustees for the financial year 1 April 2021 to 31 March 2022 and also includes any post year trustee movements:

Councillor Adele Williams	Councillor Leslie Ayoola
Councillor AJ Matsiko	Councillor Linda Woodings

Councillor Andrew Rule	Councillor Maria Joannou
Councillor Angela Kandola	Councillor Maria Watson
Councillor Angharad Roberts	Councillor Merlita Bryan
Councillor Anne Peach	Councillor Michael Edwards
Councillor Audra Wynter	Councillor Mohammed Saghir
Councillor Audrey Dinnall	Councillor Nayab Patel (elected October 21)
Councillor Azad Choudhry	Councillor Neghat Khan
Councillor Carole McCulloch	Councillor Nick Raine
Councillor Cate Woodward	Councillor Nicola Heaton
Councillor Chantal Lee (resigned)	Councillor Patience Ifediora
Councillor Cheryl Barnard	Councillor Pavlos Kotsonis
Councillor Corall Jenkins (elected October 21)	Councillor Phil Jackson
Councillor Dave Liversidge	Councillor Rebecca Langton
Councillor David Mellen	Councillor Roger Steel
Councillor David Trimble	Councillor Rosemary Healy
Councillor Ethan Radford	Councillor Sajid Mohammed
Councillor Eunice Campbell-Clark	Councillor Sally Longford
Councillor Georgina Power	Councillor Salma Mumtaz
Councillor Graham Chapman	Councillor Sam Webster
Councillor Gul Khan	Councillor Samuel Gardiner
Councillor Hassan Ahmed	Councillor Shuguftah Quddoos
Councillor Jane Lakey	Councillor Steve Battlemuch
Councillor Jawaid Khalil	Councillor Sue Johnson
Councillor Jay Hayes	Councillor Toby Neal
Councillor Kevin Clarke	Councillor Wendy Smith
Councillor Kirsty Jones	Councillor Zafran Khan
Councillor Lauren O'Grady (resigned)	

Trusts and Charities Committee Members

Councillors are appointed to membership of the Trusts and Charities Committee by full Council to fulfil the Council's responsibilities as Trustees. The Constitution allows that where in-year changes are required to memberships, either at the request of the relevant political group or because a member has resigned or ceased to be eligible for membership, the Corporate Director of Finance and Resources has the authority to action those changes subject to political balance being preserved where applicable and to the changes made being reported to the next meeting of Council. Details of membership will be updated and published on the Council's website on an ongoing basis. The following is the current list of the Trusts and Charities Committee appointed members who approve the Annual Report and financial statements for the financial year 1 April 2021 to 31 March 2022:

Councillor Angharad Roberts (Chair)
Councillor Sam Gardiner
Councillor Rosemary Healy
Councillor Sue Johnson
Councillor Anne Peach
Councillor Ethan Radford
Councillor Sajid Mohammed
Councillor Audra Wynter
Councillor Andrew Rule

Induction and training of Trusts and Charities Committee

Following appointment, Councillors are introduced to their new role and given a number of publications from the Charity Commission. These include guidance on charities and a document issued specific for members of Local Authorities titled 'Councillors Guide: to a council's role as charity trustee'. This ensures that new Councillors are aware of the scope of their responsibilities under the Charities Act.

REFERENCE AND ADMINISTRATIVE INFORMATION

Name and Address of Charity	Highfields Leisure Park Trust, Nottingham Nottingham City Council Loxley House Station Street Nottingham NG2 3NG
Governing Document	Creation of trust by indenture dated 1 November 1923 and scheme made by the Charity Commission on the 4 October 1993
Main Activity	Provision of public recreation and pleasure grounds
Charity Commission Registered Number	1006603
Name and Address of Sole Trustee	Nottingham City Council (The members of Nottingham City Council (NCC) Trusts and Charities Committee are listed on page 10 and 11)
Organisational Structure of the Charity	Highfields Leisure Park Trust, Nottingham is a charity of which Nottingham City Council is a sole trustee. Recommendations on the management of the charity are delegated to the Trusts and Charities Committee. All transactions relating to Highfields Leisure Park Trust are subject to the same financial regulations as those relating to the Council activity.
Day to Day Management	Director of Sports & Culture Hugh White Nottingham City Council Loxley House Station Street Nottingham NG2 3NG
Name & Address of Independent Examiners	Internal Audit Nottingham City Council Loxley House Station Street Nottingham NG2 3NG
Name & Address of Bankers	Lloyds Bank Birmingham OSC Ariel House 2138 Coventry Road Sheldon B26 3JW
Providers of Professional Advice	Nottingham City Council Officers

RESPONSIBILITIES OF THE TRUSTEE

The Charity Commission has introduced a new framework for accounting for charities to meet the need for public accountability for the resources held by charities. It is a combination of legislation and best practice.

The legal requirements are contained in the Charities Act 2011 which came into effect on 14 March 2012.

The accounting and reporting requirements are complemented by a revised Statements of Recommended Practice: Accounting by Charities (the Charities SORP) issued in 2005.

The Trustee is required:

- to make arrangements for the proper administration of the charity's financial affairs;
- to prepare the annual report and financial statements for each financial year to present a true and fair view of the charity's state of affairs as at the end of the financial year and of its incoming resources and its application for resources in that year.

In preparing these statements the trustee has ensured:

- suitable accounting policies have been selected and applied consistently;
- judgements and estimates have been made that were reasonable and prudent;
- the relevant legal requirements and recommended practices have been followed;
- they are prepared on the basis that the Highfields Leisure Park Trust is a going concern.

The Trustee is responsible for ensuring that proper accounting records are kept which are up to date and for maintaining a satisfactory system of control over the charity's accounts and transactions.

The Trustee is also responsible for ensuring that arrangements are made to safeguard the assets of the charity and reasonable steps are taken for the prevention and detection of fraud and other irregularities.

The Trustee must take any steps that they ought to have taken in order to make themselves aware of any relevant independent examination information and to establish that the charity's independent examiners are aware of any such information.

As far as the Trustee is aware there is no relevant independent examination information about which the Highfields Leisure Park Trust independent examiners are unaware.

ADOPTION OF THE ANNUAL REPORT AND FINANCIAL STATEMENTS

Approved by the Trusts and Charities Committee and signed on behalf of Nottingham City Council by:



Ross Brown
Corporate Director of Finance and Resources

Date: 24/1/23



Councillor Angharad Roberts (Chair)
Signed for the Trustee

Date: 27/1/23

THE FINANCIAL STATEMENTS

The financial statements include comparative figures for the previous year and consist of the following:

- **Statement of Financial Activities** is a single accounting statement with the objective of showing all incoming resources expended by the charity in year;
- **Balance Sheet** setting out the assets, liabilities and funds of the charity;
- **Notes to the Financial Statements** explaining the accounting policies adopted and explanations of information in the financial statements.

The financial statements have been prepared in accordance with statutory requirements and the Statement of Recommended Practice: Accounting and Reporting by Charities (revised 2005).

HIGHFIELDS LEISURE PARK TRUST

Statement of Financial Activities For year ending 31 March 2022		
	Unrestricted Funds 2021/22 £	Unrestricted Funds 2020/21 £
INCOMING RESOURCES		
Investment Income	0	(214)
Total Investment Income		(214)
Incoming Resources from Charitable Activities	(248,150)	(174,358)
Total Incoming Resources from Charitable Activities	(248,150)	(174,358)
Total Incoming Resources	(248,150)	(174,572)
RESOURCES EXPENDED		
Charitable Activities	248,150	174,572
Total Resources Expended	248,150	174,572
Net Incoming / (Outgoing) Resources	0	0
Fund balances brought forward as at 1 April	(213,501)	(213,501)
Fund balances carried forward as at 31 March	(213,501)	(213,501)

HIGHFIELDS LEISURE PARK TRUST

Balance Sheet		
As at 31 March 2022		
	2021/22	2020/21
	£	£
Fixed Assets		
Tangible Assets:		
Freehold Land & Buildings	1	1
Investment Assets	213,500	213,500
Total Fixed Assets		213,501
Current Assets:		
Debtors: amounts falling due within one year	0	0
Cash / Bank	0	0
Liabilities:		
Creditors: amounts falling due within one year	0	0
Cash / Bank	0	0
Net Current Assets	0	0
Net Assets	213,501	213,501
Represented by:		
Funds		
Unrestricted Funds	(1)	(1)
Capital Receipts	(213,500)	(213,500)
	(213,501)	(213,501)

NOTES TO THE FINANCIAL STATEMENTS

1. ACCOUNTING POLICIES

General Principles

The Annual Report summarises the Highfields Leisure Park Trust transactions for 2021/22 financial year together with its financial position at 31 March 2022.

This section explains the accounting policies applied in producing the Annual Report for the Trust. Accounting policies are the principles, bases, conventions and rules by which transactions are recognised, measured and presented in the accounts.

Basis of Preparation and Assessment of Going Concern

The Annual Report has been prepared in accordance with Statement of Recommended Practice: Accounting and Reporting preparing their accounts in accordance with the Financial Reporting Standard applicable in the UK and Republic of Ireland (FRS102) issued on 16 July 2014 and the Financial Reporting Standard applicable in the United Kingdom and Republic of Ireland (FRS102) and Charities Act 2011. The accounts have been prepared in accordance with the historic cost basis of accounting except for fixed assets which have been included at notional amount.

Compliance with the Charities SORP and the adoption of accounting standards and principles issued or adopted by the Accounting Standards Board ensures that the accounts show "a true and fair view" of transactions during the year and the financial position of the Highfields Leisure Park Trust at the year end.

The trustee consider that there are no material uncertainties about the Trust's ability to continue as a going concern.

The trust constitutes a public benefit entity as defined by FRS102.

Incoming Resources

Income receipts are accrued and accounted for in the period to which they relate. Income received in advance is recognised as a liability on the balance sheet within creditors.

Income from Nottingham City Council funds the net expenditure of the Highfields Leisure Park Trust for the benefit of the citizens of Nottingham.

Resources Expended

All expenditure is accrued and accounted for in the period during which they are consumed or received. Accruals have been made for all material sums unpaid at the year end for goods or services received or work completed. Payments made in advance are recognised as an asset on the balance sheet within debtors.

Charitable Activities

These costs mainly relate to premises expenses, which includes day to day maintenance, grounds maintenance and patrol.

Governance Costs

Governance costs, including the administration of the trust are directly funded by the Council, and these costs are not shown in the trust accounts.

Fixed Assets

Freehold Land and Buildings

The valuation of assets is a notional value that reflects the trusts perpetual covenant for general public access to and use of the park.

As a notional value is used, depreciation and impairment reviews are not applicable.

Investment Assets

This is the loan/investment, stated at market value, of Highfields Leisure Park Trust's capital receipts with the Council upon which interest (Bank of England base rate) is received. This interest is shown within the statement of financial activities – Investment Income.

Accruals of Expenditure and Income

The accounts of the Highfields Leisure Park Trust are maintained on an accruals basis. This means that sums due to or from the Highfields Leisure Park Trust during the year are included whether or not the cash has actually been received or paid in the year.

Where income and expenditure has been recognised but cash has not been received or paid, a debtor or creditor for the relevant amount is recorded in the balance sheet. Cash received or paid and not yet recognised as income or expenditure is shown as a creditor (receipt in advance) or debtor (payment in advance) in the balance sheet and the statement of financial activities adjusted accordingly.

Where it is doubtful that a debt will be settled, the balance of debtors is written down and a charge made to the statement of financial activities for the income that might not be collected. This bad debt provision is offset against the debtor balance on the balance sheet.

In many cases the value to be entered in respect of accrued transactions will be certain. In others, this value has to be estimated and reference is then made to past transactions and trends in order to determine the likely value.

Cash

This is represented by cash at bank which is held within the Council's bank account on behalf of Highfields Leisure Park Trust charity and cash in hand.

Funds of the Charity

Unrestricted Fund

A fund held on charitable trust for a purpose within the charity's objectives. The fund is equivalent to the notional value of the freehold land and buildings.

Restricted Funds

Capital receipts in respect of the sale or lease of land and buildings held and invested pending expenditure on further purchases of land or property for investment purposes.

2. TAX STATUS

Highfields Leisure Park Trust is a registered charity and is therefore exempt from income tax on income falling within S505 ICTA 1988. The Council is the sole trustee of the Highfields Leisure Park Trust and, in accordance with VAT notice 749, is entitled to recover VAT incurred on the expenditure of the Highfields Leisure Park Trust under section 33 of the VAT Act 1994.

3. ANALYSIS OF SOFA: INCOME & EXPENDITURE

	2021/22 £	2020/21 £
<u>INCOME</u>		
<u>Investment Income</u>		
Interest	0	(214)
<u>Charitable Activities</u>		
Fees & Charges	(10,400)	(9,049)
Grant	(117,473)	(111,787)
Rents	(120,277)	(53,522)
Other – Disposal of Asset		0
	(248,150)	(174,572)
<u>EXPENDITURE</u>		
<u>Charitable Activities</u>		
Premises	43,118	23,405
Supplies and Services	384	2,210
Support Services	194,559	135,492
Third Party Payments	10,089	13,465
	248,150	174,572

Investment income is generated from a loan to Nottingham City Council and interest received during 2021/22 was £nil (2020/21 £214).

4. TRANSACTIONS WITH RELATED PARTIES

The Council is the sole trustee of the Highfields Leisure Park Trust and any transactions between these two parties must be disclosed in accordance with the Charity SORP.

The Council gave a grant of £117,473 to the Highfields Leisure Park Trust in 2021/22, which funded the net expenditure of the charity.

Other transactions between the charity and NCC are in respect of the day to day operations of the charity. The Council charged the charity £194,559 (2020/21 £135,492) in respect of grounds maintenance and other support costs which is included in Resources Expended – Charitable Activities, within the Statement of Financial Activities.

Individual councillors of NCC did not receive any benefits from the Highfields Leisure Park Trust.

5. ANALYSIS OF FIGURES IN THE BALANCE SHEET

Tangible Fixed Assets

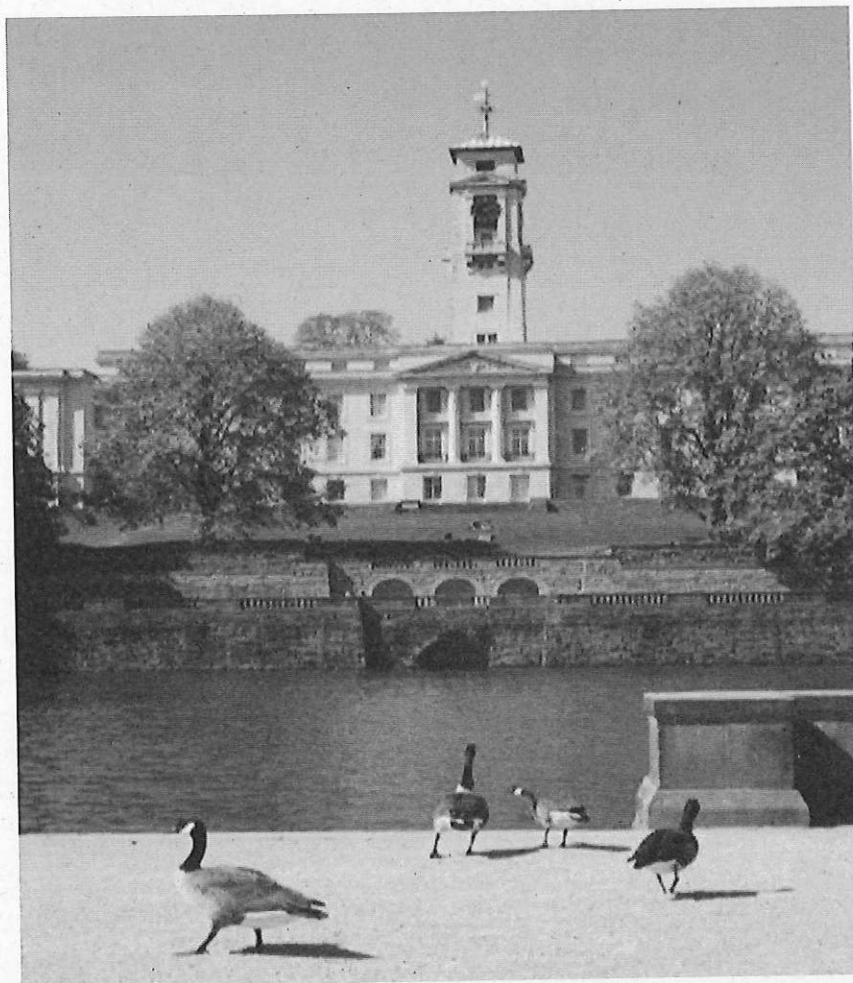
Trust lands are stated at the trustee's valuation of £1, being open market value for existing use of land subject to a perpetual covenant granting the general public access.

Investment Assets

The investment assets are held primarily to provide an investment return for the charity.

	2021/22	2020/21
	£	£
Loan to Nottingham City Council	213,500	213,500

HIGHFIELDS LEISURE PARK TRUST



Annual Report for the year ended 31 March 2022

Registered Charity number 1006603

CONTENTS

Page

3	Report of the Trustees for the year ended 31st March 2022
3	Objectives and Activities for the Public Benefit
4-5	Achievements and Performance
6	Financial Review
7-8	Plans for Future Periods
9-12	Structure, Governance and Management
13-14	Reference and Administrative Information
15-16	The Financial Statements
17-20	Notes to the Financial Statements
21	Independent Examiners Report

REPORT OF THE TRUSTEE FOR THE YEAR ENDED 31ST MARCH 2022

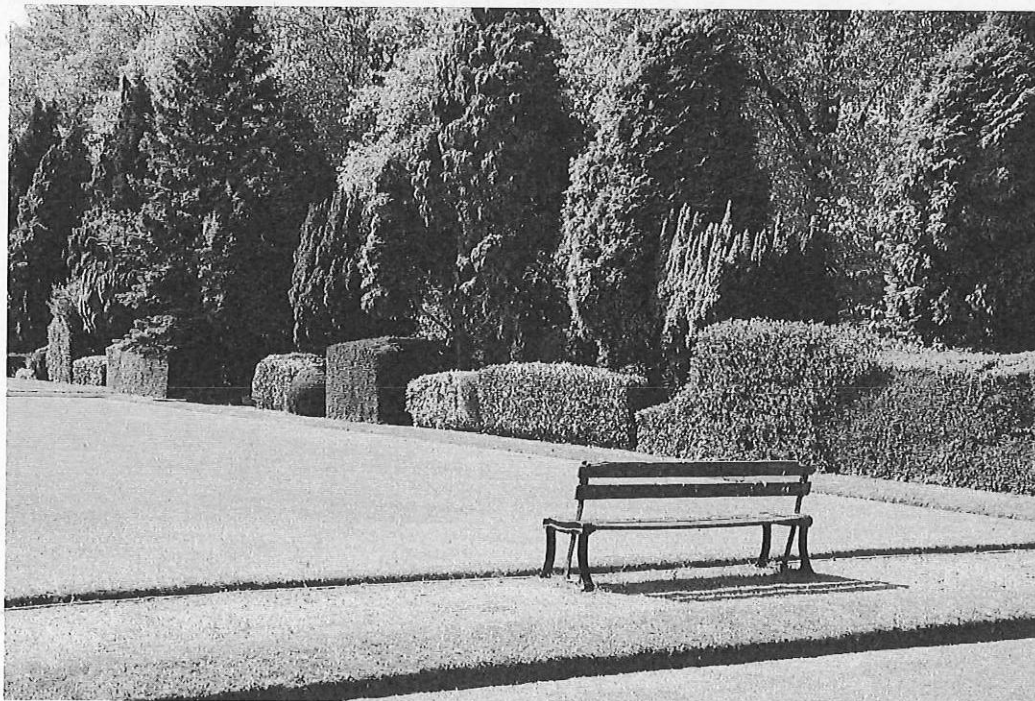
The trustees present their annual report and financial statements of the charity for the year ended 31st March 2022. The financial statements have been prepared in accordance with the accounting policies set out in note 1 to the accounts and comply with the charity's trust deed, the Charities Act 2011 and Accounting and Reporting by Charities: Statement of Recommended Practice applicable to charities preparing their accounts in accordance with the Financial Reporting Standard applicable in the UK and Republic of Ireland published on 16 July 2014.

OBJECTIVES AND ACTIVITIES FOR THE PUBLIC BENEFIT

Highfields Leisure Park Trust is a charity of which the Council is sole trustee and is responsible for the general control and management of the charity. These responsibilities are delegated to the Trusts and Charities Committee by full Council. The Trusts and Charities Committee give their time freely and receive no remuneration or other financial benefits.

Objective

The primary objective of the charity is to provide public recreation and pleasure grounds for the people of Nottingham forever. To achieve this, a programme of ongoing maintenance of grounds and equipment is completed each year. This ensures the provision of well maintained, good quality public recreation facilities. The Trustee confirm they have referred to the Charity Commission guidance on public benefit when reviewing the aims and objectives and when setting plans for the future. Highfields is open to the public at large assuring public benefit on an open access basis. There are no restrictions regarding the members of public who may use Highfields. No fees are charged for access to the park but some fees are charged for various concessions within the park.



ACHIEVEMENTS AND PERFORMANCE

Highfields Leisure Park Trust is responsible for providing leisure, recreation and sporting opportunities at Highfields Park for the benefit of Nottingham residents. Improvements on the site in the last year have included:

Performance Report (April 2021 - March 2022)

Objective	Action	Outcome
Sport, Recreation & Events	<p>The £5.2m Heritage Lottery Funded park restoration project began in summer 2017 and completed in August 2018. Work has continued on some final and additional restoration items, including:</p> <ul style="list-style-type: none"> - Creation of an artistic bench using material from and representing the Maid Marian pleasure cruise boat. - Target hardening of site western end of the park. - Improvements / replacements to play areas - Minor stonework capping repairs around the lake edges. - Ongoing railing repainting by Probation Service attendees. 	<p>More people enjoying the park and its activities.</p> <p>Improved physical activity and health and wellbeing</p>
	<p>The site offered a good range of quality activities throughout the year, which includes boating, Adventure Golf, winter and summer pitch facilities for football, archery and lacrosse, as well as croquet being held on site. There were a number of events, both sporting and community, on Highfields Park, including the, Nottingham University led Chinese New Year event, bat walks and conservation awareness sessions</p>	
	<p>The Adventure Golf & Boating activities were all open this year</p>	
	<p>Stand-up paddleboard, yoga and others (e.g. University clubs) also regularly use the lake.</p>	
	<p>A new Park Ranger has been on site since November 2021 and spent the winter months introducing herself to all the organisations and groups on site as well setting up a community gardening group, a Japanese garden group behind the cascade, and a community payback scheme</p>	
	<p>New lease completed with Nottingham croquet club signed and in place.</p>	
Community Access	<p>Nottingham High School have completed the construction of a new artificial hockey pitch on the Highfields sports ground site and it is now in full use.</p>	

	<p>Park Ranger partnership working with the University of Nottingham and Nottingham Lakeside Arts (plans for 2023/24 are being discussed).</p> <p>A FCC bid for the new Serenity Garden memorial garden next to the old paddling pool, in partnership with Forever Stars baby loss charity, was successful and work started on the £108,000 garden in 2020/21. Replacement of trees dead / vandalised The Serenity Garden was officially opened in July 2021</p>	
Well Maintained	<p>A 10 year maintenance and management plan (MMP) supported the HLF bid and details how the park is maintained following the restoration project; this is updated annually.</p> <p>Maintenance programmes have been completed in order to ensure the formal areas and woodlands are kept in an attractive and favourable condition.</p> <p>Recruitment of a permanent HLF-funded Head Gardener was successful.</p> <p>The partnership with the Estates and Grounds Maintenance Manager for the University of Nottingham campus remains strong.</p> <p>Works to the rhododendrons continue</p>	Safe, well presented and park users have more pride and ownership
Sustainability – Environmental	<p>Continued tree planting programme on site via memorial tree plantings.</p> <p>Continued upgrade of parks infrastructure via the memorial bench scheme. Memorial bench restoration continues to be a large focus and the new Heritage green colour is appearing all over the park as existing benches are refurbished and new ones are purchased by sponsors.</p> <p>Volunteering hours were significantly impacted during the covid19 pandemic but volunteering activities are returning to the park with the Park Ranger using specific site projects to encourage a wider range of volunteers.</p> <p>ERDF-funded creation of pond and installation of boardwalk across the old paddling pool to link to the new Serenity Garden.</p>	<p>Improved environmental sustainability</p> <p>Create new habitats.</p>
Sustainability - Financial	<p>The Christmas Company did not hold the event in December 2021 other income from site based concessions was reduced during the year.</p> <p>New concession agreement with Wired on Wheels (coffee and cake van)</p> <p>Cloud9 lease the boathouse for storage.</p>	More financially sustainable and value for money trust accounts.

FINANCIAL REVIEW

The Council provides grant monies to finance the annual operating deficit of the trust. In 2021/22 this amounted to £117,473 (2020/21 £111,787) which is An increase of £5,686 compared to the previous financial year. This grant supports the key objectives of the Trust.

All transactions relating to Highfields Leisure Park Trust are subject to the same financial regulations and procedures as those relating to land and property held by the Council. Since May 2011 the Trusts and Charities Committee has replaced the Executive Board for the purpose of approving transactions.

Policy on Reserves

The Council is a key partner in delivering the objectives of the Trust and has shown a continued commitment to meet any net expenditure in the year. It is therefore not felt appropriate for the Trust to hold reserves.

Risk Management

The Highfields Leisure Park Trust adopts the Council's risk management policy as appropriate.

The following statement best sums up the purpose of risk management:

"To ensure that the Council is not risk averse and takes or faces risks knowingly and manages them appropriately."

The Trustee is committed to a programme of risk management to protect the charity's assets. A risk register is held which identifies the keys risks and the measures in place to mitigate such risks. Procedures are also in place to ensure that appropriate advice and support is provided to Trusts and Charities Committee as and when required.

Insurances

Highfields Leisure Park Trust is covered by the Council's insurance policy. The Council pays the premium.

PLANS FOR FUTURE PERIODS (April 2022 - March 2023)

Objective	Action	Timetable for Delivery	Outcome
Sport, Recreation & Events	Continue to deliver partnership events with Nottingham Lakeside Arts and the University of Nottingham (subject to Covid-19 restrictions).	Ongoing throughout the year.	Improved physical activity and health and wellbeing
	Ongoing delivery of the Activity Plan by the Park Ranger and Partners, including events, education and volunteering		Increase visitors to the park Raised profile of the park Introduce different audiences to the park that may not have visited the site prior to events
Community Access	Continue to deliver education in partnership with Nottingham Lakeside Arts and the University of Nottingham based on the NCC Park Ranger Education programme (subject to Covid-19 restrictions).	Annually available	Improved education Increase in user groups using site Bat walks, creating green recycling opportunities I.e. Increasing events offered eg. Xmas wreath making
	Diverse sports on site attracts diverse interest.	Annually available	
	Following the completion and opening of the "Serenity Garden" in July 2021 a Service Level Agreement and remedial works will be completed before Spring 2022.	Spring 2022	Bring new users to the park. Redevelop an unused area. sustain community stewardship
Well Maintained	Ongoing work on rhododendrons and interpreting the Maid Marian.	2021/22	Safe, well presented and park users have more pride and ownership eg. Japanese gardeners / general park improvement volunteers - plus the introduction of park improvement days for litter picking etc.
	Develop and continue to update a new 10 year Maintenance plan.	In place & approved by the HLF.	
	Replacement of vehicle and pedestrian bridge on Highfields Sports ground side	Spring 2022	
Sustainability - Environmental	Continue to carry out volunteer and student task days on site.	Ongoing	Improved environmental sustainability
	Continue to improve areas of the park for wildlife as part of practical education sessions within the new activity plan.	Ongoing	Empowers local users with their local park. Create new habitats. i.e. meadow creation Make use of overgrown, unused areas of the park.

Sustainability - Financial	The Christmas Company will return to host an event in 2022 and the funds achieved will help to make improvements and maintain the park.	December 2021	More financially sustainable and value for money trust accounts
	Continued partnership working with Colwick Park Lifeguards who lease the boathouse for storage. (Cloud9)	Ongoing	Continued successful partnerships that help to improve the types and standard of activities offered @ Highfields Park
	Continued partnership working with Cloud9 Pursuits who manage the boating lake.	Ongoing	
	Continued partnership working with Showcase Greens Ltd who manage the Adventure Golf.	Ongoing	

STRUCTURE, GOVERNANCE AND MANAGEMENT

In order to understand the objectives of the charity it is important to consider the history of the trust and how Nottingham City Council has managed and developed Highfields Park as a first class facility for sport, leisure and recreation since the creation of the trust.

The Sir Jesse Boot Memorial Scheme was created by the 1920 Indenture.

Between 1919 and 1920, Sir Jesse acquired a mansion house called Highfields together with adjoining land lying west of the city of Nottingham. By Memorandum of Agreement dated 9 December 1921, it was agreed by Sir Jesse and the trustees of the 1920 indenture that the Highfields Estate had been purchased by Sir Jesse as agent for and on behalf of the Sir Jesse Boot Memorial Scheme.

It was also agreed that the trustees would pay Sir Jesse £57,000 out of the trust fund as reimbursement of the costs of the purchase. In return Sir Jesse would convey the Highfields Estate to the trustees or as they might direct.

By an indenture dated 1 November 1923 made between Sir Jesse, the trustees of the 1920 indenture and the Council, Sir Jesse, at the request of the trustees, conveyed part of the Highfields Estate to the Council to hold the same "for the purpose of public recreation and pleasure grounds for the people of the City of Nottingham forever" this created the present trust. By an indenture of the same date made between Sir Jesse, the trustees of the 1920 indenture and the University College of Nottingham ("the University"), the rest of the Highfields Estate (including the Manor House) was conveyed to the University.

It appears the memorial scheme was wound up in 1925.

The land conveyed to the Council was for the most part laid out as a park, although some areas were not so laid out and remained derelict. The land lies to the south of the University and to the north of the railway. It is divided along the east-west axis by University Boulevard.

To the north of University Boulevard is a large boating lake with lakeside walks, formal gardens and fine turf sports facilities including putting, bowls and croquet greens. Plantations of rhododendrons and mature trees provide a unique natural backdrop to enhance the park setting.



To the south of University Boulevard are playing fields, for winter and summer outdoor sports, together with a running track.

Over the years there have been a number of dispositions of freehold interest in the land. These include various land exchanges with the University, the acquiring of land at Beeston Sidings immediately to the south of Highfields Park and the conveyance of land to Nottinghamshire County Council for road widening purposes.

In addition, the Council as Trustee, over this time, has granted a number of leases (or licences) of land subject to the 1923 Indenture. For example, the site of the former Highfields Lido to the University - to develop the area as an art centre. Also included are lease agreements with the trustees of Highfields Hockey Club for the former sports pavilion tea-rooms. A lease has also been agreed with the croquet club for use of the croquet pavilion and four lawns and to the University for the running track and associated facilities.

Part of the Trust land to the south of University Boulevard was developed during the early 1980's as a Science Park with low-density buildings for light industrial and scientific office use. In December 1998, the Science Park was exchanged for Council land at Beeston sidings, which had been laid out for sporting and recreational activities.



Objectives of Charity

The provision of public recreation and pleasure grounds for the people of the City of Nottingham forever.

In order to achieve this, a programme of ongoing maintenance of grounds and equipment is completed each year. This ensures the provision of well-maintained public recreation and pleasure grounds.

Trustee's selection methods

Trustees' selection methods

Nottingham City Council (NCC) elected members are the sole Trustees. NCC has elected members who are elected on a 4 year cycle. The following table details the councillors / trustees for the financial year 1 April 2021 to 31 March 2022 and also includes any post year trustee movements:

Councillor Adele Williams	Councillor Leslie Ayoola
Councillor AJ Matsiko	Councillor Linda Woodings

Councillor Andrew Rule	Councillor Maria Joannou
Councillor Angela Kandola	Councillor Maria Watson
Councillor Angharad Roberts	Councillor Merlita Bryan
Councillor Anne Peach	Councillor Michael Edwards
Councillor Audra Wynter	Councillor Mohammed Saghir
Councillor Audrey Dinnall	Councillor Nayab Patel (elected October 21)
Councillor Azad Choudhry	Councillor Neghat Khan
Councillor Carole McCulloch	Councillor Nick Raine
Councillor Cate Woodward	Councillor Nicola Heaton
Councillor Chantal Lee (resigned)	Councillor Patience Ifediora
Councillor Cheryl Barnard	Councillor Pavlos Kotsonis
Councillor Corall Jenkins (elected October 21)	Councillor Phil Jackson
Councillor Dave Liversidge	Councillor Rebecca Langton
Councillor David Mellen	Councillor Roger Steel
Councillor David Trimble	Councillor Rosemary Healy
Councillor Ethan Radford	Councillor Sajid Mohammed
Councillor Eunice Campbell-Clark	Councillor Sally Longford
Councillor Georgina Power	Councillor Salma Mumtaz
Councillor Graham Chapman	Councillor Sam Webster
Councillor Gul Khan	Councillor Samuel Gardiner
Councillor Hassan Ahmed	Councillor Shuguftah Quddoos
Councillor Jane Lakey	Councillor Steve Battlemuch
Councillor Jawaid Khalil	Councillor Sue Johnson
Councillor Jay Hayes	Councillor Toby Neal
Councillor Kevin Clarke	Councillor Wendy Smith
Councillor Kirsty Jones	Councillor Zafran Khan
Councillor Lauren O'Grady (resigned)	

Trusts and Charities Committee Members

Councillors are appointed to membership of the Trusts and Charities Committee by full Council to fulfil the Council's responsibilities as Trustees. The Constitution allows that where in-year changes are required to memberships, either at the request of the relevant political group or because a member has resigned or ceased to be eligible for membership, the Corporate Director of Finance and Resources has the authority to action those changes subject to political balance being preserved where applicable and to the changes made being reported to the next meeting of Council. Details of membership will be updated and published on the Council's website on an ongoing basis. The following is the current list of the Trusts and Charities Committee appointed members who approve the Annual Report and financial statements for the financial year 1 April 2021 to 31 March 2022:

Councillor Angharad Roberts (Chair)
Councillor Sam Gardiner
Councillor Rosemary Healy
Councillor Sue Johnson
Councillor Anne Peach
Councillor Ethan Radford
Councillor Sajid Mohammed
Councillor Audra Wynter
Councillor Andrew Rule

Induction and training of Trusts and Charities Committee

Following appointment, Councillors are introduced to their new role and given a number of publications from the Charity Commission. These include guidance on charities and a document issued specific for members of Local Authorities titled 'Councillors Guide: to a council's role as charity trustee'. This ensures that new Councillors are aware of the scope of their responsibilities under the Charities Act.

REFERENCE AND ADMINISTRATIVE INFORMATION

Name and Address of Charity	Highfields Leisure Park Trust, Nottingham Nottingham City Council Loxley House Station Street Nottingham NG2 3NG
Governing Document	Creation of trust by indenture dated 1 November 1923 and scheme made by the Charity Commission on the 4 October 1993
Main Activity	Provision of public recreation and pleasure grounds
Charity Commission Registered Number	1006603
Name and Address of Sole Trustee	Nottingham City Council (The members of Nottingham City Council (NCC) Trusts and Charities Committee are listed on page 10 and 11)
Organisational Structure of the Charity	Highfields Leisure Park Trust, Nottingham is a charity of which Nottingham City Council is a sole trustee. Recommendations on the management of the charity are delegated to the Trusts and Charities Committee. All transactions relating to Highfields Leisure Park Trust are subject to the same financial regulations as those relating to the Council activity.
Day to Day Management	Director of Sports & Culture Hugh White Nottingham City Council Loxley House Station Street Nottingham NG2 3NG
Name & Address of Independent Examiners	Internal Audit Nottingham City Council Loxley House Station Street Nottingham NG2 3NG
Name & Address of Bankers	Lloyds Bank Birmingham OSC Ariel House 2138 Coventry Road Sheldon B26 3JW
Providers of Professional Advice	Nottingham City Council Officers

RESPONSIBILITIES OF THE TRUSTEE

The Charity Commission has introduced a new framework for accounting for charities to meet the need for public accountability for the resources held by charities. It is a combination of legislation and best practice.

The legal requirements are contained in the Charities Act 2011 which came into effect on 14 March 2012.

The accounting and reporting requirements are complemented by a revised Statements of Recommended Practice: Accounting by Charities (the Charities SORP) issued in 2005.

The Trustee is required:

- to make arrangements for the proper administration of the charity's financial affairs;
- to prepare the annual report and financial statements for each financial year to present a true and fair view of the charity's state of affairs as at the end of the financial year and of its incoming resources and its application for resources in that year.

In preparing these statements the trustee has ensured:

- suitable accounting policies have been selected and applied consistently;
- judgements and estimates have been made that were reasonable and prudent;
- the relevant legal requirements and recommended practices have been followed;
- they are prepared on the basis that the Highfields Leisure Park Trust is a going concern.

The Trustee is responsible for ensuring that proper accounting records are kept which are up to date and for maintaining a satisfactory system of control over the charity's accounts and transactions.

The Trustee is also responsible for ensuring that arrangements are made to safeguard the assets of the charity and reasonable steps are taken for the prevention and detection of fraud and other irregularities.

The Trustee must take any steps that they ought to have taken in order to make themselves aware of any relevant independent examination information and to establish that the charity's independent examiners are aware of any such information.

As far as the Trustee is aware there is no relevant independent examination information about which the Highfields Leisure Park Trust independent examiners are unaware.

ADOPTION OF THE ANNUAL REPORT AND FINANCIAL STATEMENTS

Approved by the Trusts and Charities Committee and signed on behalf of Nottingham City Council by:



Ross Brown
Corporate Director of Finance and Resources

Date: 24/1/23



Councillor Angharad Roberts (Chair)
Signed for the Trustee

Date: 27/1/23

THE FINANCIAL STATEMENTS

The financial statements include comparative figures for the previous year and consist of the following:

- **Statement of Financial Activities** is a single accounting statement with the objective of showing all incoming resources expended by the charity in year;
- **Balance Sheet** setting out the assets, liabilities and funds of the charity;
- **Notes to the Financial Statements** explaining the accounting policies adopted and explanations of information in the financial statements.

The financial statements have been prepared in accordance with statutory requirements and the Statement of Recommended Practice: Accounting and Reporting by Charities (revised 2005).

HIGHFIELDS LEISURE PARK TRUST

Statement of Financial Activities For year ending 31 March 2022		
	Unrestricted Funds 2021/22 £	Unrestricted Funds 2020/21 £
INCOMING RESOURCES		
Investment Income	0	(214)
Total Investment Income		(214)
Incoming Resources from Charitable Activities	(248,150)	(174,358)
Total Incoming Resources from Charitable Activities	(248,150)	(174,358)
Total Incoming Resources	(248,150)	(174,572)
RESOURCES EXPENDED		
Charitable Activities	248,150	174,572
Total Resources Expended	248,150	174,572
Net Incoming / (Outgoing) Resources	0	0
Fund balances brought forward as at 1 April	(213,501)	(213,501)
Fund balances carried forward as at 31 March	(213,501)	(213,501)

HIGHFIELDS LEISURE PARK TRUST

Balance Sheet		
As at 31 March 2022		
	2021/22	2020/21
	£	£
Fixed Assets		
Tangible Assets:		
Freehold Land & Buildings	1	1
Investment Assets	213,500	213,500
Total Fixed Assets		213,501
Current Assets:		
Debtors: amounts falling due within one year	0	0
Cash / Bank	0	0
Liabilities:		
Creditors: amounts falling due within one year	0	0
Cash / Bank	0	0
Net Current Assets	0	0
Net Assets	213,501	213,501
Represented by:		
Funds		
Unrestricted Funds	(1)	(1)
Capital Receipts	(213,500)	(213,500)
	(213,501)	(213,501)

NOTES TO THE FINANCIAL STATEMENTS

1. ACCOUNTING POLICIES

General Principles

The Annual Report summarises the Highfields Leisure Park Trust transactions for 2021/22 financial year together with its financial position at 31 March 2022.

This section explains the accounting policies applied in producing the Annual Report for the Trust. Accounting policies are the principles, bases, conventions and rules by which transactions are recognised, measured and presented in the accounts.

Basis of Preparation and Assessment of Going Concern

The Annual Report has been prepared in accordance with Statement of Recommended Practice: Accounting and Reporting preparing their accounts in accordance with the Financial Reporting Standard applicable in the UK and Republic of Ireland (FRS102) issued on 16 July 2014 and the Financial Reporting Standard applicable in the United Kingdom and Republic of Ireland (FRS102) and Charities Act 2011. The accounts have been prepared in accordance with the historic cost basis of accounting except for fixed assets which have been included at notional amount.

Compliance with the Charities SORP and the adoption of accounting standards and principles issued or adopted by the Accounting Standards Board ensures that the accounts show "a true and fair view" of transactions during the year and the financial position of the Highfields Leisure Park Trust at the year end.

The trustee consider that there are no material uncertainties about the Trust's ability to continue as a going concern.

The trust constitutes a public benefit entity as defined by FRS102.

Incoming Resources

Income receipts are accrued and accounted for in the period to which they relate. Income received in advance is recognised as a liability on the balance sheet within creditors.

Income from Nottingham City Council funds the net expenditure of the Highfields Leisure Park Trust for the benefit of the citizens of Nottingham.

Resources Expended

All expenditure is accrued and accounted for in the period during which they are consumed or received. Accruals have been made for all material sums unpaid at the year end for goods or services received or work completed. Payments made in advance are recognised as an asset on the balance sheet within debtors.

Charitable Activities

These costs mainly relate to premises expenses, which includes day to day maintenance, grounds maintenance and patrol.

Governance Costs

Governance costs, including the administration of the trust are directly funded by the Council, and these costs are not shown in the trust accounts.

Fixed Assets

Freehold Land and Buildings

The valuation of assets is a notional value that reflects the trusts perpetual covenant for general public access to and use of the park.

As a notional value is used, depreciation and impairment reviews are not applicable.

Investment Assets

This is the loan/investment, stated at market value, of Highfields Leisure Park Trust's capital receipts with the Council upon which interest (Bank of England base rate) is received. This interest is shown within the statement of financial activities – Investment Income.

Accruals of Expenditure and Income

The accounts of the Highfields Leisure Park Trust are maintained on an accruals basis. This means that sums due to or from the Highfields Leisure Park Trust during the year are included whether or not the cash has actually been received or paid in the year.

Where income and expenditure has been recognised but cash has not been received or paid, a debtor or creditor for the relevant amount is recorded in the balance sheet. Cash received or paid and not yet recognised as income or expenditure is shown as a creditor (receipt in advance) or debtor (payment in advance) in the balance sheet and the statement of financial activities adjusted accordingly.

Where it is doubtful that a debt will be settled, the balance of debtors is written down and a charge made to the statement of financial activities for the income that might not be collected. This bad debt provision is offset against the debtor balance on the balance sheet.

In many cases the value to be entered in respect of accrued transactions will be certain. In others, this value has to be estimated and reference is then made to past transactions and trends in order to determine the likely value.

Cash

This is represented by cash at bank which is held within the Council's bank account on behalf of Highfields Leisure Park Trust charity and cash in hand.

Funds of the Charity

Unrestricted Fund

A fund held on charitable trust for a purpose within the charity's objectives. The fund is equivalent to the notional value of the freehold land and buildings.

Restricted Funds

Capital receipts in respect of the sale or lease of land and buildings held and invested pending expenditure on further purchases of land or property for investment purposes.

2. TAX STATUS

Highfields Leisure Park Trust is a registered charity and is therefore exempt from income tax on income falling within S505 ICTA 1988. The Council is the sole trustee of the Highfields Leisure Park Trust and, in accordance with VAT notice 749, is entitled to recover VAT incurred on the expenditure of the Highfields Leisure Park Trust under section 33 of the VAT Act 1994.

3. ANALYSIS OF SOFA: INCOME & EXPENDITURE

	2021/22 £	2020/21 £
<u>INCOME</u>		
<u>Investment Income</u>		
Interest	0	(214)
<u>Charitable Activities</u>		
Fees & Charges	(10,400)	(9,049)
Grant	(117,473)	(111,787)
Rents	(120,277)	(53,522)
Other – Disposal of Asset		0
	(248,150)	(174,572)
<u>EXPENDITURE</u>		
<u>Charitable Activities</u>		
Premises	43,118	23,405
Supplies and Services	384	2,210
Support Services	194,559	135,492
Third Party Payments	10,089	13,465
	248,150	174,572

Investment income is generated from a loan to Nottingham City Council and interest received during 2021/22 was £nil (2020/21 £214).

4. TRANSACTIONS WITH RELATED PARTIES

The Council is the sole trustee of the Highfields Leisure Park Trust and any transactions between these two parties must be disclosed in accordance with the Charity SORP.

The Council gave a grant of £117,473 to the Highfields Leisure Park Trust in 2021/22, which funded the net expenditure of the charity.

Other transactions between the charity and NCC are in respect of the day to day operations of the charity. The Council charged the charity £194,559 (2020/21 £135,492) in respect of grounds maintenance and other support costs which is included in Resources Expended – Charitable Activities, within the Statement of Financial Activities.

Individual councillors of NCC did not receive any benefits from the Highfields Leisure Park Trust.

5. ANALYSIS OF FIGURES IN THE BALANCE SHEET

Tangible Fixed Assets

Trust lands are stated at the trustee's valuation of £1, being open market value for existing use of land subject to a perpetual covenant granting the general public access.

Investment Assets

The investment assets are held primarily to provide an investment return for the charity.

	2021/22	2020/21
	£	£
Loan to Nottingham City Council	213,500	213,500

Independent Examiner's report to the Trustees of the Highfields Leisure Park Trust

I report on the accounts of the Trust for the year ended 31st March 2022, which are set out on pages 1 to 21.

Respective responsibilities of trustees and examiner

The charity's trustees are responsible for the preparation of the accounts. The charity's trustees consider that an audit is not required for this year under section 144 of the Charities Act 2011 (the Charities Act) and that an independent examination is needed.

It is my responsibility to:

- examine the accounts under section 145 of the Charities Act
- to follow the procedures laid down in the general Directions given by the Charity Commission (under section 145(5)(b) of the Charities Act; and
- to state whether particular matters have come to my attention.


Basis of independent examiner's report

My examination was carried out in accordance with the general Directions given by the Charity Commission. An examination includes a review of the accounting records kept by the charity and a comparison of the accounts presented with those records. It also includes consideration of any unusual items or disclosures in the accounts, and seeking explanations from the trustees concerning any such matters. The procedures undertaken do not provide all the evidence that would be required in an audit and consequently no opinion is given as to whether the accounts present a 'true and fair view' and the report is limited to those matters set out in the statement below.

Independent examiner's statement

In connection with my examination, no matter has come to my attention:

1. which gives me reasonable cause to believe that in any material respect the requirements:
 - to keep accounting records in accordance with section 130 of the Charities Act; and
 - to prepare accounts which accord with the accounting records and comply with the accounting requirements of the Charities Act have not been met; or
2. to which, in my opinion, attention should be drawn in order to enable a proper understanding of the accounts to be reached.

Signed:		Date: 11 th January 2022
Name:	Shail Shah, Head of Audit & Risk	
Relevant professional qualification(s) or body:	FCCA	
Address:	Nottingham City Council, Loxley House, Station Street, Nottingham NG2 3NG	

