

## **Axis Web**

Charity number 1002841

A company limited by guarantee number 02595018

### **Annual Report and Financial Statements**

**for the year ended 31 March 2021**

**axis**  
we support artists



West Yorkshire Community Accounting Service

**Annual Report and Financial Statements  
for the year ended 31 March 2021**

<b>Contents</b>	<b>Page</b>
Trustees' report	2 to 12
Examiner's report	6
Statement of financial activities	7
Balance sheet	8
Notes to the accounts	9 to 14

**Prepared by West Yorkshire Community Accounting Service**

# Axis Web

## Trustees' report for the year ended 31 March 2021

### Reference and administrative details of the charity, its trustees and advisors

The trustees during the financial year and up to and including the date the report was approved were:

<b>Name</b>	<b>Position</b>	<b>Dates</b>
Lisa Stansbie		
Sarah Martin		
Rupert Wilcox-Baker		
Sue Williams		
Holly Slingsby		
Fiona Grady		
<b>Charity number</b>	1002841	Registered in England and Wales
<b>Company number</b>	02595018	Registered in England and Wales
<b>Registered and principal address</b>	<b>Bankers</b>	
The Art House S9	National Westminster Bank Plc	
Drury Lane	8 Park Row	
Wakefield	Leeds	
WF1 2TE	LS1 2TW	

### Independent examiner

Simon Bostrom FCIE

### West Yorkshire Community Accounting Service

Stringer House  
34 Lupton Street  
Leeds  
LS10 2QW

### Structure, governance and management

The charity is a company limited by guarantee and was formed on 25 March 1991. It is governed by a memorandum and articles of association as amended by special resolutions dated 17 April 2003, 25 December 2004, 30 November 2006, 20 December 2019 and 8 April 2021. The liability of the members in the event of the company being wound up is limited to a sum not exceeding £1.

### Method of recruitment and appointment of trustees

The trustees of the charity are also the directors for the purposes of company law and are appointed by the members at the AGM.

# **Axis Web**

## **Trustees' report (continued) for the year ended 31 March 2021**

### **Objectives and activities**

#### **The charity's objects**

Our Charity's purposes, as set out in the objects contained in the company's memorandum of association, are to:

advance the education of the public by promoting and developing the understanding and appreciations of the visual arts in the United Kingdom, in particular by extending the influence in and relevance of the visual arts to the community, by creating new opportunities in the visual arts by encouraging and facilitating an increase in good practice in the visual arts.

The vision that shapes our annual activities is to lead the promotion and presentation of contemporary art in the UK, creating opportunities for exchange and interaction that benefit a wide constituency of artists and art professionals and strengthen the contribution of the visual arts to society.

#### **The charity's main activities**

A membership body supporting artists and those who work with artists.

##### **A Hub For Artists, Art Professionals And Commissioners**

We help our members engage with the challenges and opportunities of a changing world. Being a hub to incubate artists, support their projects, capture and share knowledge and provide legacy for action. We lead and support high standards and facilitate collaboration, research and innovation.

##### **Amplifying The Artists Voice**

We help to better understand the work and value of artists. The potential of successful work is often limited by the lack of capacity of the artist to amplify and document it. We do this through advocacy and engagement based on our content, programmes, evidence base and the expertise of our members.

##### **A Strong Organisation**

We grow our membership base and ensure that our business model is ethical and supports our vision, purpose and artists. We do this by enhancing the value of our offer to members and others, generating diverse and sustainable sources of income and striving for operational excellence.

### **Public benefit statement**

In setting our objectives and planning our activities our Trustees have given serious consideration to the Charity Commission's general guidance on public benefit.

### **Achievements and performance**

20-21 has been a year of growth and adaptation for Axis.

It has welcomed the arrival of three new team members, the launch of three major projects and two new commissioning strands. It has seen us build closer ties with the Social Art Network, partnered with HE institutions like Manchester Met University, Swansea College of Art and Bournemouth Arts University and secured funding from Arts Council England and Art Fund. We have commissioned hundreds of artists and provided support to countless others.

Our organisation has risen to the challenges posed by Covid-19 and we have entered the new financial year in a strong position, secure in our role as 'the small arts charity that cares' and gaining recognition as thought leaders in the area of socially engaged practice.

#### Covid Response

Our 20-21 has, like all organisations, been underscored by Covid-19 response and recovery. As one of the UK's first digital arts charities, Axis was well-prepared to make the shift to online programming and delivery, meaning that we were able to focus the majority of our energies on supporting our members, many of whom were badly impacted by the crisis and associated losses of income and opportunities.

## Axis Web

### Trustees' report (continued) for the year ended 31 March 2021

Our 'no-strings' **Hardship Fund**—one of the first in the sector—ran for approximately 15 cycles beginning in March 2020, providing emergency payments to more than 150 artists. We also offered a **3-month Membership Holiday** to all those who would be otherwise unable to pay, enabling more than 300 artists to remain part of our Axis community during the crisis.

In addition to financial support, we also recognised the importance of offering in-kind support to artists who might be feeling disconnected from their work and communities. We worked hard to create new online content, resources and opportunities to help artists continue to be artists in spite of the lockdowns.

Our podcast, '**Live Out Loud**' ran for seven episodes, providing paid work for 17 artists commissioned to speak on their experiences and a 'talking point' on social media for our network. Episodes included 'Practice in Isolation', 'Social Art in a Time of Social Distancing', 'Care', 'Radical Wellbeing', 'Parenthood' and 'A New World Order'.<sup>1</sup> We also ran 5 weeks of **Sunday Sounds**, a weekly collection of sound art, music, readings, performances and conversations submitted by members to help ease screen fatigue and promote wellbeing.

In April 2020 we successfully applied for an Arts Council England Emergency Grant and were awarded £35K to develop the **Social ARtery**—a project to build a new, ethical online space for artists and the communities they work with to meet, create and share their work (see 'Projects' for more detail). The funding helped us run the **Pioneers** programme with 20 artists and collectives who trialled the Beta ARtery platform and provided crucial feedback to inform the next stage of development.<sup>2</sup> We also received £10,000 funding from Art Fund to support the **Social Art Library Ambassadors** programme, documenting emergency Covid-19 response work by social artists in the UK and beyond.

Finally, as a result of the success of 'at home working' for Axis staff members, in March 2021 we decided to give up our physical premises, representing a projected annual saving of approx. £2.5K: money which will help us build a stronger online infrastructure to support more artists in future.

1 Commissioned artists were: Natasha Alexander, Sophie Bownes, Beth Davis-Hofbauer, Suzanne Dhaliwal, Rupi Dhillon, Amelia Hawk, Elsa James, Lady Kitt, Robyn LeRoy-Evans, Lauren McLaughlin, Radha Patel, Chantal Powell, David Robinson, R.M. Sanchez-Camus, Emily Speed, Melissandre Varin and Sian Williams.

2 The Pioneers were: Sandra Bouguerch, Cath Carver, Niki Colclough, Sarah Dixon + Sharon Bennett, Bronia Evers, Rik Fisher, Anna Francis, James Harrington + Jennifer Booth, Pete Kinsington + Preston Street Union, Lady Kitt, Gil Mualem Doron, Kajal Nisha Patel, Shonagh Short, Anna Smith, Simon Tyszko and Jo Wheeler.

## Axis Web

### Trustees' report (continued) for the year ended 31 March 2021

#### Commissions + programming



Work by Jaron Hill for Digital Residency (2021)

In addition to our continuing programme of **Five2Watch** and **Highlights** released weekly on Axis's social media platforms, 20-21 saw the launch of our new thematic **Digital Residency** series, replacing our previous 'Artist of the Month' feature. Led by Programme Producer, Harlan Whittingham, the first awardees Kim Coleman and Jenny Hogarth responded to the theme of 'collaboration', reflecting on a video work, *If You Can't See My Mirrors I Can't See You*, created by the duo 10 years prior.

The second awardee, responding to the subject of 'World-Building', is Jaron Hill, who is currently producing work around the experience of being black and queer outdoors.

We launched our **Micro-commissions** with two collaborative artist duos, Kiara Mohamed and Niloo Sharifi and Moe Johansson and an\*dre neely commissioned in the first phase. In the second phase, Sam Williams and Ro Hardaker will work on 'world building'. Outcomes associated with the new residencies and commissions have included articles, blog posts and an online performance.

We offer platforms for the work of other exceptional artists, for example, *#Navigating\_New\_Normal*, by Quilla Constance and *'An Other A,B,C'* by Melissandre Varin.

## Axis Web

### Trustees' report (continued) for the year ended 31 March 2021



Caitlin Gilligan / Max Mallender for Vacant Spaces project, Bootle (2021)

Although our Vacant Spaces programme was initially stalled due to Covid-19, we quickly bounced back, supporting artists to develop Covid risk assessment plans informed by the most up-to-date guidelines provided by the government. This allowed intermittent but safe activity to take place in between the various degrees of lockdown.

We helped to facilitate contingency plans and provided replacement property for artists who have lost space in: Sunderland, North Shields, Middlesbrough, and Cardiff. In addition, we have begun to work with a number of new groups including in Bootle (with members of The Royal Standard, Art in Liverpool and Liverpool John Moores University), Hull (with the Hull Artist Research Initiative) and Middlesbrough (with Community Connectors).

## Axis Web

### Trustees' report (continued) for the year ended 31 March 2021

#### Education + outreach



Screenshot from Praxis online workshop with Shy Bairns (2021)

Led by Axis Engagement and Learning Producer, Kelly Culver, Praxis is now in its second year. The professional development programme was launched in September 2020 in response to the increased challenges facing new artists graduating into a sector hit hard by ongoing cuts and pandemic restrictions. Aimed at final year students, and originally trialled at Arts University Bournemouth, it offers a season of talks, practical advice and resources and networking opportunities to help smooth the transition from education to art career.

From September 2020 to February 2021, Praxis supported 20 artists and awarded 4 commissions (2 x micro commissions, 2 x workshops commissions). Guest speakers included Amahra Spence, Abbie Canning, Saelia Aparicio, Shy Bairns and Charmian Griffin.

Testimonies from participants were very positive:

*It's been really helpful to have access to Axis's resources and constant support through their membership network. It couldn't have come at a better time, post-graduation and in the middle of the pandemic.*

*The Micro commission is an amazing opportunity for me to grow as an artist. Allowing me to buy new equipment and giving me extra confidence that my work and concepts are supported by others, thank you Axis!*

In January 2021, the programme was adapted and developed for final year students from Arts University Bournemouth, Swansea College of Art, University of the Arts Norwich and York St John University. On July 1, we will launch our summer programme which will provide 8 weeks of support, with the next full phase to follow in September 2021. Speakers lined up to contribute include Rupri Dhillon, Lindsey Mendick, Karanjit Panesar, Lydia Blakeley, Mary Cork, Lucy Wright and Taneesha Ahmed.

In May 2020 we partnered with Artists Access to Art Colleges (AA2A) to help promote their services. Axis Media Producer, Jules Lister created a short film detailing employability support for students and residency placements for creatives.

## Axis Web

### Trustees' report (continued) for the year ended 31 March 2021

#### Projects + research



Taking Up Space walk by Social Art Library Ambassador, Gabriella Gay (2020)

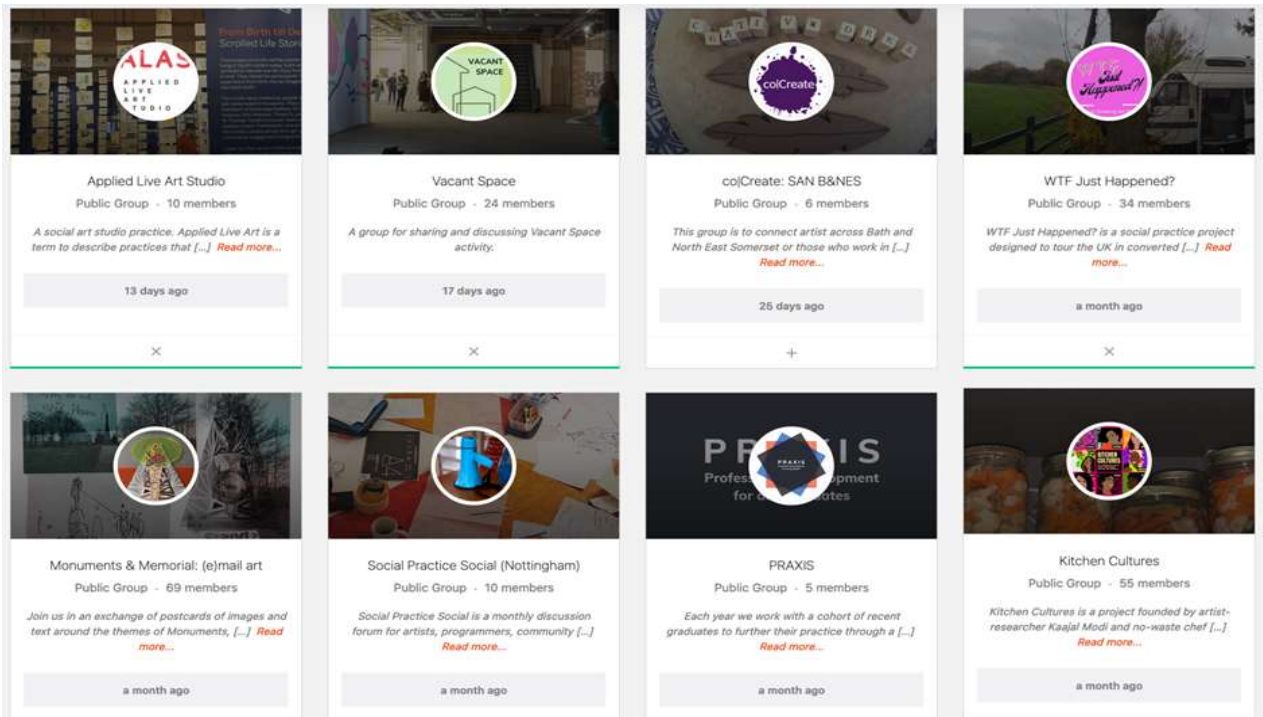
**Social Art Library**, led by Social Producer, Dr Lucy Wright was launched in trial Beta format in June 2020 and in that time has become a growing archive of more than 200 projects and resources, submitted by artists. The project received seed funding from Art Fund to deliver the Social Art Library Ambassadors programme (10 artist micro-commissions), was featured by Sluice magazine and Open Eye Gallery and has grown a small but dedicated social media following (Twitter: c.1K, Instagram: c.1K). Full project evaluation by Lawrence Bradby in January 2021 underlined the need for an archive of this nature and demonstrated the success of the project to-date.

As part of SOAL's public programming, **Storytelling for Artists** was a series of sell-out events and workshops including 'Storytelling for Artists 101' with Debs Newbold (public lecture and masterclass for 10 artists selected via open call), 'Art + Gentrification' with Dr Tyler Denmead, University of Cambridge (virtual seminar and book launch) and the global film premiere of 'Shy Radicals' with Hamja Ahsan and Black Dog Films.

In addition, as part of SOAL's commitment to supporting critical writing on social practice, in January 2021, the second issue of **Social Works? Open journal** was announced with more than 25 writing commissions for parallel print and digital editions of the publication. Launch will be in September 2021.

## Axis Web

### Trustees' report (continued) for the year ended 31 March 2021



Screenshot of Groups in the Social ARTery

Social ARTery, led by lead artist R.M. Sánchez-Camus (Marcelo) is a bespoke and ethical online workspace for artists and the communities that they work with. 'Soft launched' in October 2020 with the Social ARTery Pioneers programme, the project grew exponentially by 300% in its first few months of existence.

Project groups on ARTery include: health & wellbeing, puppetry, food, visual art, dance, performance, music, gaming, LGBTQI+ and disabled artist-led projects. Artists come from different regions across England from rural communities to towns and cities, representing the cultural diversity of the country. An example is Kaajal Modi who ran a food waste & storytelling workshop with migrant women of colour in and around Bristol: the

Social Art Network's 11 regional hubs across the UK have already been onboarded to the ARTery and will form a new online network to deliver their peer forums. This sets the groundwork for the 2022 partnership delivering the Social Art Summit, a national review of social practice, and ARTery Digital Symposium, the digital home for the Summit.

#### Equality, diversity + access

20-21 served as a reminder of our crucial responsibility to embed equality, diversity and inclusion as driving principles across all of our organisational processes and delivery.

Although we have a strong track record of commissioning diverse artist projects, in a survey undertaken in June 2020, 100% of staff members identified as white and able-bodied, while of the 454 members who took part, 87.3% were white and 72.5% able-bodied—suggesting that we still have a long way to go for equality to be achieved at all levels of the organisation.

In summer 2020, in response to the resurgence of the Black Lives Matter movement, we drew up an Equality, Diversity and Inclusivity policy, which set out Axis's commitment to promoting equality and sharing to become a better and more proactive ally. Steps taken to date include sharing of pronouns in staff email signatures and offering artists from marginalised communities a fee to assist in the selection process for major commissions. We have scheduled 6-monthly updates to assess progress.

## Axis Web

### Trustees' report (continued) for the year ended 31 March 2021



Quilla Constance in #Navigating\_New\_Normal for Axis (2021)

Starting in June 2021, Axis will be a lead partner in the new AHRC-funded project, 'Social Art for Equality, Diversity and Inclusivity', or SAFEDI, with Prof Amanda Ravetz, Manchester Metropolitan University (with whom we have previously partnered on the 'Beyond the Gallery' project and 'Models of Validation' Knowledge Transfer Partnership) and Marcelo, who brings his lived experience as a Latin-x UK settled migrant to the work .

Axis will support the delivery of six social art commissions to create a new model of creative collective policymaking, with artists, marginalised audiences, policymakers and institutions. Its aim is to deliver innovative policy change and position social practice as a leading champion of EDI in the visual arts. Policies developed for the cultural sector will be integrated into Axis policies to ensure the organisation is always leading on EDI issues.

#### Re-brand

This year we have taken important steps to update and rebrand our online platform to better reflect our growing confidence as an organisation and to clarify our message.

We are currently working closely with Let's Dance, a creative agency based in Leeds who specialise in bespoke, ethical communication design for independents, social enterprises and charities. Together we have developed a new set of brand values to inform the kind of visual identity we will embody going forwards. These are (abridged):

1. A collaborative community

We're an organisation that is always in dialogue with our members: they shape everything we do... Collaboration isn't just something we value in theory; it's central to our way of working.

2. Bold + purposeful

A brand that is purposeful will provide us with the clear voice we need to tell our story more clearly and convey our impact, helping us to attract new members and be recognised more widely for the difference we make.

## Axis Web

### Trustees' report (continued) for the year ended 31 March 2021

#### Re-brand - continued

3. Flexible + evolving

Our brand needs to work for different audiences and provide a platform for the wide range of things that we do.

4. Supportive + empowering

We're here to support artists. We want them to see that we're on their side, working to make things better for them... The support we receive isn't just reactive—we're often pushing forwards on the front foot to improve things for artists.

5. Innovative + creative

As an organisation we're never afraid to try new things. We don't experiment just for the sake of it though—our goal is to employ transformation so that we remain relevant in a sector that is always evolving.

#### Our journey continues

Axis's journey in pursuing clarity on the values that define us as an organisation and our vision for the world we want to see. It sharpens our focus around advocacy, infrastructure innovation and capacity building.

Over the past five years Axis has grown and changed, driven by two important factors: the first, without public subsidy we fundamentally changed our approach to enterprise in the quest for sustainability. This approach expanded the reach of our membership network and we started to draw interest and contributions from

#### What now

Getting the importance of a healthy artists-led sector is an urgent and long term priority. Our programme is driven by our purpose and membership, by doing this we operate in the best interests of artists.

- 1 **Our Story** - communicating our purpose to raise awareness and stimulate engagement.
- 2 **Membership programme** - engagement with members to create a healthier ethical people centred mutual-aid network.
- 3 **Platforms** - with a digital first approach, refocusing our efforts to reflect changing expectations and opportunities.
- 4 **Building Capacity** - Creating a culture of nurturing, collaboration and growth.

## **Axis Web**

### **Trustees' report (continued) for the year ended 31 March 2021**

#### **Financial review**

The net income for the year was £49,744.

#### **Reserves policy**

The charity's free reserves, excluding fixed assets, at the year end were £208,201.

The Trustees have established a General Reserves Policy which continues to protect our programme of work from risk of disruption at short notice due to a lack of funds, while at the same time ensuring that we do not retain income for longer than required.

The Policy also provides parameters for future strategic plans and contributes towards decision-making. It determines an appropriate target level for general reserves, taking into account the following factors:

- vulnerability to unplanned changes in financial position
- net financial risk related to the above, taking into account the likely speed of onset as well as the mitigation steps available to management
- the fact that expenditure is generally predictable

The Trustees have based the projections for the appropriate amount of reserves required on the basis that the reserves protecting the charity against uncertainty of future income streams / expenditure including:

- Loss of membership income due to the impact of the pandemic on artists livelihoods;
- Decline in donations;
- Enable new, unplanned activities required to sustain the charity;
- Enable the response to unexpected opportunities and threats;
- Provide resources to invest in long-term future developments.

The amount deemed appropriate by the Trustees would provide short-term (6 - 12 months operation) until long-term solutions can be established.

General reserves range has been set at £110,000 - £220,000.

#### **Funds held as agent**

During the year Axis received £7,000 from the Art fund to be passed on to the Social Arts Network London - a non constituted voluntary group of artists. These transactions have been excluded from the charity's income and expenditure. No funds were held at the year end.

## **Axis Web**

### **Trustees' report (continued) for the year ended 31 March 2021**

#### **Statement of trustees' responsibilities**

The trustees (who are also the directors for the purposes of company law) are responsible for preparing the Trustees report and the financial statements in accordance with the applicable law and UK Accounting Standards.

Company law requires the trustees to prepare financial accounts for each financial year which give a true and fair view of the state of affairs of the charitable company and of the incoming resources and application of resources, including the income and expenditure, of the charitable company for the year. In preparing these financial statements, the trustees are required to:

select suitable accounting policies and apply them consistently;

observe the methods and principles in the Charities SORP;

make judgements and estimates that are reasonable and prudent;

state whether applicable UK accounting standards have been followed, subject to any material departures disclosed and explained in the financial statements;

prepare the accounts on a going concern basis unless it is inappropriate to presume that the charitable company will continue in operation.

The trustees are responsible for keeping proper accounting records which disclose with reasonable accuracy at any time the financial position of the charitable company and to enable them to ensure that the financial accounts comply with the Companies Act 2006. They are also responsible for safeguarding the assets of the charity and hence for taking reasonable steps for the prevention and detection of fraud and other irregularities.

This report has been prepared in accordance with the Statement of Recommended Practice: Accounting and Reporting by Charities (Charities SORP (FRS102)), and in accordance with the special provisions of the Companies Act 2006 relating to small companies.

Signed on behalf of the board of trustees on 14/12/2021

Lisa Stansbie (Trustee)

## **Axis Web**

### **Independent examiner's report to the trustees of Axis Web**

I report to the charity trustees on my examination of the accounts of the charitable company for the year ended 31 March 2021, which are set out on pages 7 to 14.

#### **Responsibilities and basis of report**

As the charity's trustees of the charitable company (and also its directors for the purposes of company law) you are responsible for the preparation of the accounts in accordance with the requirements of the Companies Act 2006 ('the 2006 Act').

Having satisfied myself that the accounts of the charitable company are not required to be audited under Part 16 of the 2006 Act and are eligible for independent examination, I report in respect of my examination of your charity's accounts as carried out under section 145 of the Charities Act ('the 2011 Act'). In carrying out my examination I have followed the Directions given by the Charity Commission under section 145(5)(b) of the 2011 Act.

#### **Independent examiner's statement**

Since the charitable company's gross income exceeded £250,000 your examiner must be a member of a body listed in section 145 of the 2011 Act.

I confirm that I am qualified to undertake the examination because I am a member of ACIE which is one of the listed bodies.

I have completed my examination. I confirm that no material matters have come to my attention in connection with the examination giving me cause to believe that in any material respect:

- 1 accounting records were not kept in respect of the company as required by section 386 of the 2006 Act; or
- 2 the accounts do not accord with those records; or
- 3 the accounts do not comply with the accounting requirements of section 396 of the 2006 Act other than any requirement that the accounts give a 'true and fair view' which is not a matter considered as part of an independent examination; or
- 4 the accounts have not been prepared in accordance with the methods and principles of the Statement of Recommended Practice for accounting and reporting by charities [applicable to charities preparing their accounts in accordance with the Financial Reporting Standard applicable in the UK and Republic of Ireland (FRS 102)].

I have no concerns and have come across no other matters in connection with the examination to which attention should be drawn in this report in order to enable a proper understanding of the accounts to be reached.

Simon Bostrom FCIE

15/12/2021

#### **West Yorkshire Community Accounting Service**

Stringer House  
34 Lupton Street  
Leeds  
LS10 2QW

## Axis Web

### Statement of Financial Activities

(including summary income and expenditure account)

for the year ended 31 March 2021

	Notes	2021 Unrestricted funds £	2021 Restricted funds £	2021 Total funds £	2020 Total funds £
<b>Income from:</b>					
Grants and donations	(2)	154,576	45,000	199,576	197,927
Members subscriptions		117,943	-	117,943	98,487
Income from group undertakings		6,091	-	6,091	8,510
Investment income		126	-	126	411
<b>Total income</b>		<b>278,736</b>	<b>45,000</b>	<b>323,736</b>	<b>305,335</b>
<b>Expenditure on:</b>					
Salaries and NICs	(3)	105,381	-	105,381	84,959
Vacant spaces costs		41,569	-	41,569	118,375
Insurance scheme for members		21,791	-	21,791	18,673
Artists fees, commissions and projects		20,682	45,000	65,682	2,876
Artists bursaries		8,213	-	8,213	12,300
Marketing		3,912	-	3,912	5,689
Platform and programme		15,377	-	15,377	31,405
Office premises costs		1,542	-	1,542	2,226
General expenses		721	-	721	653
Charity insurance		2,381	-	2,381	1,055
Travel and subsistence		-	-	-	2,421
Book keeping		1,176	-	1,176	1,040
Bank charges		679	-	679	2,219
Telephone		130	-	130	310
Computer expenses		43	-	43	209
Governance costs		1,400	-	1,400	2,379
Legal and professional		1,060	-	1,060	1,015
Independent examination		1,000	-	1,000	1,000
Depreciation		1,181	-	1,181	422
Staff development		754	-	754	700
<b>Total expenditure</b>		<b>228,992</b>	<b>45,000</b>	<b>273,992</b>	<b>289,926</b>
<b>Net income / (expenditure)</b>		<b>49,744</b>	<b>-</b>	<b>49,744</b>	<b>15,409</b>
<b>Fund balances brought forward</b>		<b>159,978</b>		<b>159,978</b>	<b>144,569</b>
<b>Fund balances carried forward</b>	(4)	<b>209,722</b>	<b>-</b>	<b>209,722</b>	<b>159,978</b>

All incoming resources and resources expended derive from continuing activities.

# Axis Web

## Balance sheet

as at 31 March 2021

	2021	2021	2021	2020
	Unrestricted	Restricted	Total	Total
	£	£	£	£
<b>Fixed assets</b>				
Tangible assets	(5) 1,520	-	1,520	425
Investments	(9) 1	-	1	1
<b>Total fixed assets</b>	<u>1,521</u>	<u>-</u>	<u>1,521</u>	<u>426</u>
<b>Current assets</b>				
Debtors and prepayments	(6) 12,880	-	12,880	10,543
Cash at bank	<u>303,712</u>	<u>6,050</u>	<u>309,762</u>	<u>283,953</u>
<b>Total current assets</b>	<u>316,592</u>	<u>6,050</u>	<u>322,642</u>	<u>294,496</u>
<b>Current liabilities:</b>				
<b>amounts falling due within one year</b>				
Creditors and accruals	(7) <u>108,391</u>	<u>6,050</u>	<u>114,441</u>	<u>134,944</u>
<b>Total current liabilities</b>	<u>108,391</u>	<u>6,050</u>	<u>114,441</u>	<u>134,944</u>
<b>Net current assets / (liabilities)</b>	<u>208,201</u>	<u>-</u>	<u>208,201</u>	<u>159,552</u>
<b>Net assets</b>	<u>209,722</u>	<u>-</u>	<u>209,722</u>	<u>159,978</u>
<b>Funds</b>				
Unrestricted funds				
General unrestricted funds	209,722	-	209,722	100,456
Designated funds	-	-	-	59,522
Total unrestricted funds	<u>209,722</u>	<u>-</u>	<u>209,722</u>	<u>159,978</u>
Restricted funds	<u>-</u>	<u>-</u>	<u>-</u>	<u>-</u>
<b>Total funds</b>	<u>209,722</u>	<u>-</u>	<u>209,722</u>	<u>159,978</u>

For the year ending 31 March 2021 the charitable company was entitled to exemption from audit under section 477 of the Companies Act 2006 relating to small companies.

The members have not required the charitable company to obtain an audit of its accounts for the year in question in accordance with section 476. The trustees (who also the directors for the purposes of company law) acknowledge their responsibilities for complying with the requirements of the Act with respect to accounting records and the preparation of accounts.

These accounts have been prepared in accordance with the provisions applicable to companies subject to the small companies' regime and with FRS 102 (effective January 2019).

The financial statements were approved by the board of trustees on 14/12/2021

Lisa Stansbie (Trustee)

# **Axis Web**

## **Notes to the accounts for the year ended 31 March 2021**

### **1 Accounting policies**

#### **Basis of accounting**

These accounts have been prepared under the historical cost convention with items recognised at cost or transaction value unless otherwise stated in the relevant note(s) to these accounts. The financial statements have been prepared in accordance with the Statement of Recommended Practice: Accounting and Reporting by Charities preparing their accounts in accordance with the Financial Reporting Standard applicable in the UK and Republic of Ireland (FRS 102) (effective 1 January 2019) and with the Charities Act 2011.

The charity constitutes a public benefit entity as defined by FRS 102. There has been no change to the accounting policies since last year. No changes have been made to the accounts for previous years.

#### **Going concern**

The trustees are satisfied that there are no material uncertainties about the charity's ability to continue.

#### **Incoming resources**

All incoming resources are included in the Statement of Financial Activities (SOFA) when the charity becomes entitled to the resources, it is more likely than not that the trustees will receive the resources and the monetary value can be measured with sufficient reliability.

#### **Grants and donations**

Grants and donations are only included in the SOFA when the charity has unconditional entitlement to the resources.

Where grants are related to performance and specific deliverables, they are accounted for as the charity earns the right to consideration by its performance.

Donated goods for resale are valued at the amount actually realised upon their sale.

Donated assets, facilities or services are valued at their estimated value to the charity. This is the price that the charity estimates it would pay in the open market for equivalent items; or services and facilities of equivalent utility to the charity.

#### **Expenditure and liabilities**

Expenditure is recognised on an accrual basis as a liability is incurred. Liabilities are recognised where it is more likely than not that there is a legal or constructive obligation committing the charity to pay out the resources and the amount of the obligation can be measured with reasonable certainty.

#### **Taxation**

As a charity the organisation benefits from rates relief and is generally exempt from income tax and capital gains tax but not from VAT. Irrecoverable VAT is included in the cost of those items to which it relates.

#### **Tangible fixed assets**

Tangible fixed assets costing more than £500 are capitalised and included at cost including any incidental expenses of acquisition. Gifted assets are shown at the value to the charity on receipt. Depreciation is provided on all tangible fixed assets at rates calculated to write off the cost on a straight line basis over their expected useful economic lives as follows:

Fixtures and fittings: over 3 years

## **Axis Web**

### **Notes to the accounts for the year ended 31 March 2021**

#### **1 Accounting policies continued**

##### **Pensions**

The charity operates a defined contribution scheme for the benefit of its employees. The costs of contributions are recognised in the year they are payable.

##### **Fund accounting**

Unrestricted funds are available for use at the discretion of the trustees in furtherance of the general objectives of the charity.

Designated funds are unrestricted funds earmarked by the trustees for particular purposes.

Restricted funds are subjected to restrictions on their expenditure imposed by the donor or through the terms of an appeal.

Further explanation of the nature and purpose of each fund is included in the notes to the accounts.

# Axis Web

## Notes to the accounts continued for the year ended 31 March 2021

2 Grants and donations	2021	2021	2021	2020
	Unrestricted funds	Restricted funds	Total funds	Total funds
	£	£	£	£
Donations in relation to space for artists	79,331	-	79,331	172,927
Arts Council England	-	35,000	35,000	-
Barnsley Metropolitan Borough Council	25,000	-	25,000	-
Cardiff Council	25,000	-	25,000	-
Sunderland City Council	25,000	-	25,000	-
The Art Fund	-	10,000	10,000	-
Newark and Sherwood District Council	-	-	-	25,000
General donations	245	-	245	-
	<u>154,576</u>	<u>45,000</u>	<u>199,576</u>	<u>197,927</u>

The charity leases otherwise vacant properties at a peppercorn rent from a number of landlords. The charity pays rates and sometimes utilities for the properties. The landlords donate funds to cover these costs and those sums are what is shown here. From time to time landlords and artists make voluntary donations to support the charitable activity of Axisweb.

3 Staff costs and numbers	2021	2020
	£	£
Gross salaries	95,738	77,584
Social security costs	2,288	2,382
Pensions	7,355	4,993
	<u>105,381</u>	<u>84,959</u>

The average number employees during the year was 5.5, being an average of 3.9 full time equivalent (2020: 4.2, 3.3 FTE). There were no employees with emoluments above £60,000.

Defined contribution pension scheme	2021	2020
	£	£
Costs of the scheme to the charity for the year	7,355	4,993
Amount of any contributions outstanding at the year end	2,459	701

4 Restricted funds	Balance b/f	Incoming	Outgoing	Transfers	Balance c/f
	£	£	£	£	£
Arts Council England	-	35,000	35,000	-	-
Art Fund	-	10,000	10,000	-	-
	<u>-</u>	<u>45,000</u>	<u>45,000</u>	<u>-</u>	<u>-</u>

Fund name	Purpose of restriction
Arts Council England	Towards the social artery project, an artist led commissioning programme exploring the creation of an alternative digital networking space for social art practice.
Art Fund	Funding for a social art library, an artist led commissioning programme exploring the documentation and digital archiving of social art practice.

## Axis Web

### Notes to the accounts continued for the year ended 31 March 2021

4 Designated funds	Balance b/f £	Incoming £	Outgoing £	Transfers £	Balance c/f £
Development fund	59,522	-	-	(59,522)	-
	<u>59,522</u>	<u>-</u>	<u>-</u>	<u>(59,522)</u>	<u>-</u>

#### Purpose of designation

The Trustees had set aside designated funds to invest in the development of a new resilient business model. The balance has now been transferred back to general unrestricted funds.

#### 5 Tangible assets

	Fixtures, fittings & equipment £	Total £
<b>Cost</b>		
At 1 April 2020	41,312	41,312
Additions	<u>2,276</u>	<u>2,276</u>
At 31 March 2021	<u>43,588</u>	<u>43,588</u>
<b>Depreciation</b>		
At 1 April 2020	40,887	40,887
Charge for year	<u>1,181</u>	<u>1,181</u>
At 31 March 2021	<u>42,068</u>	<u>42,068</u>
<b>Net book value</b>		
At 31 March 2021	<u>1,520</u>	<u>1,520</u>
At 31 March 2020	<u>425</u>	<u>425</u>

#### 6 Debtors and prepayments

	2021 £	2020 £
Debtors	4,600	100
Funds owing from trading subsidiary	7,141	10,290
Prepayments	<u>1,139</u>	<u>153</u>
	<u>12,880</u>	<u>10,543</u>

#### 7 Creditors and accruals

	2021 £	2020 £
Creditors	11,841	10,814
Accruals	37,450	64,561
Deferred income	<u>65,150</u>	<u>59,569</u>
	<u>114,441</u>	<u>134,944</u>

# Axis Web

## Notes to the accounts continued for the year ended 31 March 2021

### 8 Related party transactions

#### Trustee expenses

No trustee received any expenses during this year (previous year: 3 trustees and £620 in respect of travel).

#### Trustee remuneration and benefits

No trustee received any remuneration or benefit during this or the previous year.

#### Remuneration and benefits received by key management personnel

The key management personnel of the charity comprises the Executive Director only. The total employee benefits of the key management personnel of the charity were £42,359 (2020: £40,223).

At the balance sheet date the Charity was owed £7,141 (2020: £4,930) by Axis Web Development Limited (a wholly owned subsidiary company) which is included within debtors. Salary recharges of £750 were payable to the charity by the subsidiary company in the year (2020: £750).

#### Other related party transactions

		2020	2019
		£	£
Holly Slingsby	Allowance for trustee board meeting attendance	600	800
Fiona Grady	Allowance for trustee board meeting attendance	800	800
		<u>1,400</u>	<u>1,600</u>

### 9 Fixed assets investments

	£
Carrying (market) value at beginning of year	1
Add: additions to investments at cost	-
Less: disposals at carrying value	-
Add / (deduct): net gain / (loss) on revaluation	-
Carrying (market) value at end of year	<u>1</u>

#### Breakdown of investments agreeing with SOFA and Balance sheet

	2021	2020
	£	£
Analysis of investments		
Investments in subsidiary undertakings	<u>1</u>	<u>1</u>
Total	<u>1</u>	<u>1</u>

## Axis Web

### Statement of Financial Activities including comparatives for all funds (including summary income and expenditure account) for the year ended 31 March 2021

	2021 Unrestricted funds £	2020 Unrestricted funds £	2021 Restricted funds £	2020 Restricted funds £	2021 Total funds £	2020 Total funds £
<b>Income</b>						
Grants and donations	154,576	197,927	45,000	-	199,576	197,927
Members subscriptions	117,943	98,487	-	-	117,943	98,487
Income from group undertakings	6,091	8,510	-	-	6,091	8,510
Investment income	126	411	-	-	126	411
<b>Total income</b>	<b>278,736</b>	<b>305,335</b>	<b>45,000</b>	<b>-</b>	<b>323,736</b>	<b>305,335</b>
<b>Expenditure</b>						
Salaries and NICs	105,381	84,959	-	-	105,381	84,959
Vacant spaces costs	41,569	118,375	-	-	41,569	118,375
Insurance scheme for members	21,791	18,673	-	-	21,791	18,673
Artists fees, commissions and projec	20,682	2,876	45,000	-	65,682	2,876
Artists bursaries	8,213	7,300	-	5,000	8,213	12,300
Marketing	3,912	5,689	-	-	3,912	5,689
Platform and programme	15,377	31,405	-	-	15,377	31,405
Office premises costs	1,542	2,226	-	-	1,542	2,226
General expenses	721	653	-	-	721	653
Charity insurance	2,381	1,055	-	-	2,381	1,055
Travel and subsistence	-	2,421	-	-	-	2,421
Book keeping	1,176	1,040	-	-	1,176	1,040
Bank charges	679	2,219	-	-	679	2,219
Telephone	130	310	-	-	130	310
Computer expenses	43	209	-	-	43	209
Governance costs	1,400	2,379	-	-	1,400	2,379
Legal and professional	1,060	1,015	-	-	1,060	1,015
Independent examination	1,000	1,000	-	-	1,000	1,000
Depreciation	1,181	422	-	-	1,181	422
Staff development	754	700	-	-	754	700
<b>Total expenditure</b>	<b>228,992</b>	<b>284,926</b>	<b>45,000</b>	<b>5,000</b>	<b>273,992</b>	<b>289,926</b>
<b>Net income / (expenditure)</b>	<b>49,744</b>	<b>20,409</b>	<b>-</b>	<b>(5,000)</b>	<b>49,744</b>	<b>15,409</b>
<b>Fund balances brought forward</b>	<b>159,978</b>	<b>139,569</b>	<b>-</b>	<b>5,000</b>	<b>159,978</b>	<b>144,569</b>
<b>Fund balances carried forward</b>	<b>209,722</b>	<b>159,978</b>	<b>-</b>	<b>-</b>	<b>209,722</b>	<b>159,978</b>